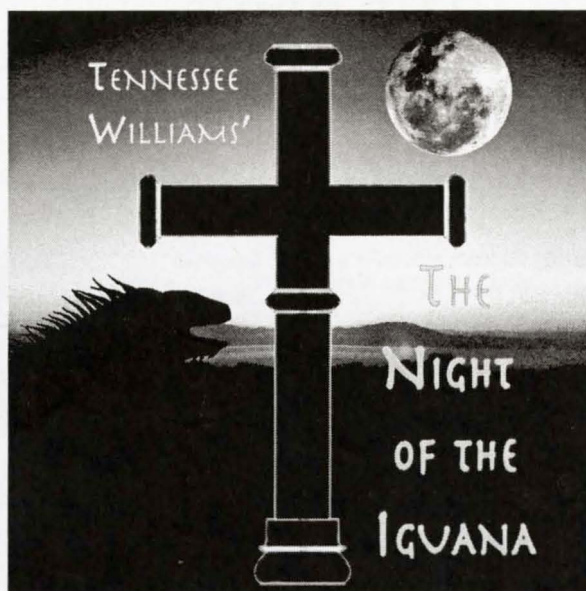


2005-2006 UNIVERSITY SERIES  
**THE HOTTEST TICKET IN TOWN!**

Stephen F. Austin State University  
College of Fine Arts and  
School of Theatre present



Produced by

SFA  
*School of Theatre*  
STEPHEN F. AUSTIN STATE UNIVERSITY

**Feb. 21-25, 2006**

**7:30 p.m.**

**W.M. Turner Auditorium**

Sponsored in part by



MAKE THE ROAD  
YOUR CANVAS.

THE DRIVE,  
YOUR WORK OF ART.

2006 LINCOLN NAVIGATOR



1115 NORTH ST. | NACOGDOCHES  
1-888-4TIPTON | [WWW.TIPTONFORD.COM](http://WWW.TIPTONFORD.COM)

# The University Series

## 2005-2006 The Hottest Ticket in Town!

The Art Center and Griffith Gallery are open Tuesday through Sunday, 12:30-5 p.m.  
All performances at 7:30 p.m.

- September 9 - October 16 ..... *SFA Faculty Exhibition*  
The Art Center
- September 16 - October 16 ..... *Barry Anderson: Epic Escapism & Suspension*  
Griffith Gallery and School of Art Gallery
- October 15 ..... *Stars and Stripes Forever: A Patriotic Review*  
featuring the SFA A Cappella Choir ..... W. M. Turner Auditorium
- October 27 ..... *Betty Buckley: Deep in the Heart*  
W. M. Turner Auditorium
- November 15 -19 ..... *The Tempest* by William Shakespeare  
an SFA School of Theatre Production ..... W. M. Turner Auditorium
- November 29 ..... *The Salzburg Marionettes*  
presenting *The Magic Flute* by W. A. Mozart ..... W. M. Turner Auditorium
- January 31 ..... *Ballet Hispanico*  
W. M. Turner Auditorium
- February 8 - March 26 ..... *In the Path of the Blaue Reiter*  
German Expressionist Portfolios, Prints and Books ..... Griffith Gallery
- February 21 - 25 ..... *The Night of the Iguana* by Tennessee Williams  
an SFA School of Theatre Production ..... W. M. Turner Auditorium
- March 6 ..... *Salzburg Chamber Soloists with Pianist Andreas Klein*  
W. M. Turner Auditorium
- March 23 ..... *Los Hombres Calientes*  
W. M. Turner Auditorium
- April 6 - 8 ..... *SFA Opera - La Périchole*  
an SFA School of Music and School of Theatre Production ..... W. M. Turner Auditorium
- April 7 - May 5 ..... *Paul Brach: 1985-2005*  
Griffith Gallery

**For information, call (936) 468-6407 or 1 (888) 240-ARTS**



# SFA ALUMNI FOUNDATION

## Fine Arts Scholarships

Representing nearly \$860,000  
that annually benefit students  
in the College of Fine Arts

Kermit & Margaret Agee Scholarship  
Elsie Arscott Scholarship  
Bridges/McKinney Scholarship  
Perry & Martha Brittain Scholarship  
Zack Brittain Scholarship  
Paul Buskirk Memorial Scholarship  
Zelma Childers Award  
Wanda Cochran Scholarship  
Ed & Gwen Cole Theatre Scholarship  
J.T. Cox Scholarship  
Melba Cranford Scholarship  
John & Doris Daniel Scholarship  
John Dickson Scholarship  
E. Diane Ford Scholarship  
Diane, Casey, and Court Fouts Scholarship  
H.H. & Bertha Gibson Scholarship  
W.H. & Bennie Atkinson Gray Scholarship  
Emily Hargraves Scholarship  
Charles Lee Hill Scholarship  
Doris & James Jones Scholarship

James G. & Doris Jones Scholarship  
Brian LaBarbera Memorial Scholarship  
Lenville Martin Award  
Pat Roberdeau Mast Scholarship  
Brad Maule Award  
Sandy McGrath Scholarship  
Mamie Middlebrook Scholarship  
Mel Montgomery Scholarship  
Ida Pritchett Scholarship  
Mary Osborne Ray Scholarship  
Karl Schlicher Award  
Barbara Schoenewolf Scholarship  
SFA Theatre Scholarship  
Simpson/Miller Scholarship  
Aaron & Barbara Smith Scholarship  
William M. Turner Scholarship  
Jimmie Hudgins Twirl-o-Jack Scholarship  
Stephen Weeks Scholarship  
Anonymous Scholarship



SFA Alumni Association  
[www.sfaalumni.com](http://www.sfaalumni.com)

SFA Alumni Association

PO Box 6096-SFA Station • Nacogdoches, TX 75962

Toll Free: (800) 765-1534 • Ph: (936) 468-3407 • Fax: (936) 468-1007  
[alumni@sfasu.edu](mailto:alumni@sfasu.edu) • [www.sfaalumni.com](http://www.sfaalumni.com)

# *Like Diamonds, Endowments are Forever.*

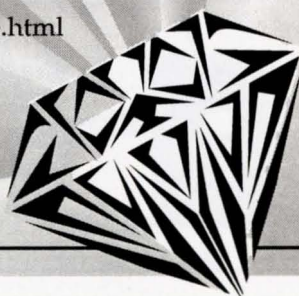
*The SFASU Foundation manages more than \$9 million in permanent endowments that support SFA, its students and programs.*

*Many of these endowments support the College of Fine Arts at SFA. If you would like to make a difference during your lifetime and beyond, establish an endowment today.*

*For more information and details regarding endowments, please contact Jerry Holbert, Executive Director.*

## **STEPHEN F. AUSTIN STATE UNIVERSITY FOUNDATION, INC.**

P.O. Box 6092, SFA Station  
Nacogdoches, Texas 75962  
(936) 468-5406  
[www.givetosfa.sfasu.edu/create.html](http://www.givetosfa.sfasu.edu/create.html)



*"High station  
in life is earned by the gallantry  
with which appalling experiences  
are survived with grace."*

*- Tennessee Williams*



## GLAUCOMA CONSULTANTS OF EAST TEXAS



**Shannon L. Smith, M.D., F.A.C.S.**

*Diplomate, American Board of Ophthalmology  
Fellowship Trained in Glaucoma*

3000 A N. University Drive Nacogdoches  
936-564-3600 or Toll Free 1-877-810-3937

[www.eyesoftexas.us](http://www.eyesoftexas.us)



DEAR FRIENDS OF THE ARTS,

I WOULD LIKE TO WELCOME YOU TO ANOTHER FINE PERFORMANCE AT THE STEPHEN F. AUSTIN STATE UNIVERSITY COLLEGE OF FINE ARTS.

TIPTON FORD-LINCOLN-MERCURY IS VERY PROUD TO PLAY A PART IN BRINGING THE BEST THE FINE ARTS HAS TO OFFER RIGHT HERE TO OUR HOMETOWN. SO SIT BACK, RELAX AND ENJOY THE SHOW.

SINCERELY,

A handwritten signature in black ink, appearing to read "Neal Slaten". The signature is stylized and cursive.

NEAL SLATEN  
PRESIDENT



1115 NORTH ST. | NACOGDOCHES  
1-888-4TIPTON | [WWW.TIPTONFORD.COM](http://WWW.TIPTONFORD.COM)

TENTS • WEDDINGS • PARTIES • TOOLS

# UNIVERSITY RENTAL

Try our chocolate fountain!

560-0800

JIM ELDER, OWNER

732 N. UNIVERSITY



# EXCEL

CAR WASH, INC.

Excel Car Wash & Valvoline Express Care

4101 North Street, Nacogdoches

560-1453

Valvoline Express Care

1620 South Street, Nacogdoches

560-3457

Valvoline Express Care

2601 North Street, Nacogdoches

552-7279

## SIMPLE PEACE OF MIND.

# JMG / i/c

## JOE MAX GREEN INSURANCE CONCEPTS

564-0221

3310 N. UNIVERSITY





**OFFICE  
SOLUTIONS**

**Computer Networks**

**Digital Copiers**

**Intergrated Fax**

**Supplies**

**Phone: 560-6500**

**RAY JOHNSTON, L.C.S.W. - A.C.P.**  
**Counseling Services**

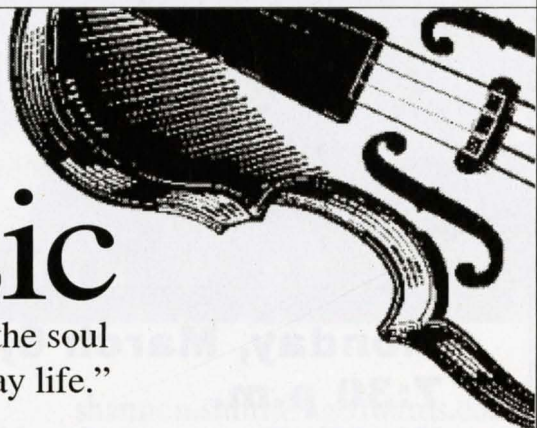
- Individual, Family, Marital & Divorce;  
Children, Adolescents
- Depression, Stress/Work/School and  
Relationship Issues
- Alcohol and Drug Problems
- Most insurance accepted including  
Medicare, Medicaid, BCBS,  
CHAMPUS/Tricare
- Negotiable Rates
- Close to SFA Campus

24 hours - 569-8570  
fax: 560-1144

*Our reputation speaks for itself.*

Bernhold Auerbach  
**Music**

washes away from the soul  
the dust of everyday life."



**Edward Jones<sup>®</sup>**

Serving Individual Investors Since 1871

**Wendy Wyatt Buchanan, AAMS**

424 East Main, Nacogdoches, TX  
936-564-2327 • 1-800-801-2327

In celebration of Mozart's 250th birthday,  
the Stephen F. Austin State University College of Fine Arts presents

# Salzburg Chamber Soloists

featuring **Andreas Klein**

performing *Mozart's Piano Concerto KV 415*



**Monday, March 6, 2006**

**7:30 p.m.**

**W. M. Turner Auditorium**

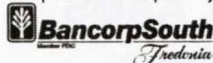
**Tickets: \$7.50 - \$30**

as part of the 05-06

**University Series**

**THE HOTTEST TICKET IN TOWN**

Sponsored in part by



For more information or tickets,  
call (936) 468-6407 or (888) 240-ARTS  
or visit [www.finearts.sfasu.edu](http://www.finearts.sfasu.edu)

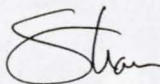


# A WEALTH OF INSIGHT

The trusted advice you need for financial success.

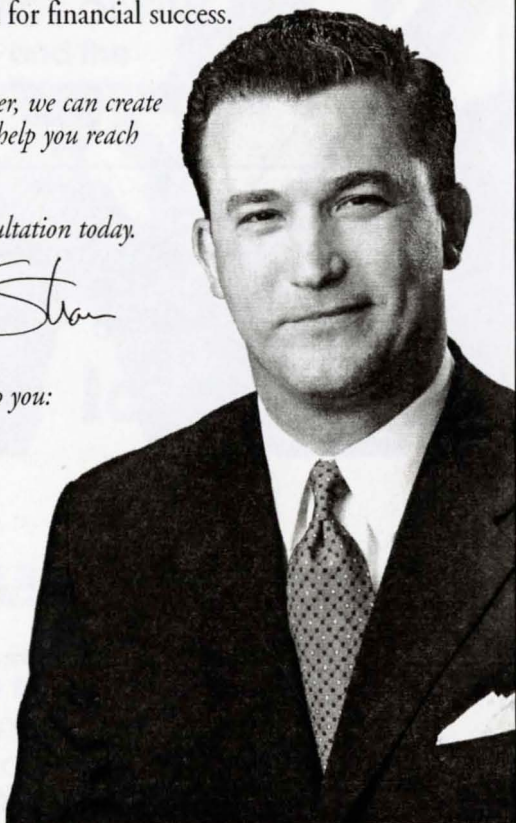
*Hi, I'm Shannon Smith. Together, we can create a comprehensive plan that will help you reach your goals.*

*Call me for your financial consultation today.*



*We can develop strategies to help you:*

- Create Wealth.
- Preserve Wealth.
- Manage Wealth.
- Distribute Wealth.



SHANNON SMITH

560-3930

shannon.smith@agedwards.com  
2610 N. University Drive



**EDWARDS**<sup>SM</sup>

FULLY INVESTED IN OUR CLIENTS<sup>SM</sup>

A.G. Edwards & Sons, Inc. | Member SIPC



*If art is that which causes  
thought or emotion,*

*then the gift of a child is  
the greatest art.*

  
Commercial Bank of Texas, N.A.

*Enthusiastic admirer of  
artists and their future.*

Member FDIC

**SFA SCHOOL OF THEATRE  
THE COLLEGE OF FINE ARTS**  
and the  
**THE UNIVERSITY SERIES**  
present

# **THE NIGHT OF THE IGUANA**

**BY TENNESSEE WILLIAMS**

**DIRECTED BY ALLEN OSTER**

SCENIC DESIGN BY TOMY MATTHYS  
COSTUME DESIGN BY ANGELA BACARISSE  
LIGHTING & SOUND DESIGN BY CC CONN  
MAKEUP DESIGN BY DARRELL D. GRANT  
HAIR DESIGN BY MATTHEW REEVES OLIVER  
STAGE COMBAT BY JUANITA FINKENBERG  
STAGE MANAGER: CHRIS FLORES \*  
ASSISTANT DIRECTOR: C. DEXTER KINSMAN \*  
DRAMATURG: CATHERINE ANN RESTIVO

**FEBRUARY 21-25, 2006**

**7:30 P.M.**

**W.M. TURNER AUDITORIUM**

## ABOUT THE CAST

**Jessee Foudray** (Hilda), a sophomore from Waller, appeared in the SFA Mainstage production of *The Tempest*. She also won the 2003 Houston Young Playwrights Exchange for her play *Trapped in Bagland*, which was performed at the Alley Theatre.

**Christopher J. Gamel** (Pedro) is a sophomore from Sugar Land. He was in the Mainstage productions of *The Tempest*, *Trudi and the Minstrel*, *The Shadow Box*, and *Hair*. Chris also appeared in the 2005 Original Cast.

**Jessica Harkness** (Miss Judith Fellowes), a junior from Orange, acted in the SFA productions of *Six Characters in Search of an Author*, *Private Eyes* and *Marred Bliss*. She is a Theatre major with an English minor.

**Chris Howell** (Rev. T. Lawrence Shannon) appeared in *Bobby Gould in Hell* at SFA last fall. He was also in *Of Mice and Men* and *Reefer Madness* at Angelina College, *Rapunzel* in Cincinnati, OH, and *The Man Who Came to Dinner* in Coldwater, MI.

**Chris Kennedy** (Understudy Shannon), a senior, has acted in *The Tempest*, *Sylvia*, *Harvey*, *The Seagull*, and the 2005 Original Cast. He was Assistant Director for *Anton in Show Business*. Chris can also be seen in *China Dolls* this semester.

**Sean Tyler McDaniel** (Nonno) has appeared in *Trudi and the Minstrel*, *Hair*, *The Man Who Came to Dinner*, *Raised in Captivity*, *Private Wars*, and *Guernica*. Sean directed *Welcome to the Moon* and will be directing *Goodbye Oscar* later this semester.

**Chad McElveen** (Wolfgang) is a freshman from Lufkin, where his credits at Lufkin High School include *A Midsummer Night's Dream*, *You're a Good Man, Charlie Brown*, and *Play It Again, Sam*. At SFA he was on the crew for *The Tempest*.

**Robert "Chewy" Minshew** (Hank) is a junior whose credits include *The Shadow Box* at SFA and *Of Mice and Men*, *Division Street*, and *Into the Woods* at Angelina College. Chewy also assistant directed the Angelina production of *Clown's Play*.

## ABOUT THE CAST (CONTINUED)

**Tim Olivares** (Pancho) is a sophomore from San Antonio. His Mainstage credits include *The Tempest* and *Hair*. Tim also appeared in *Three Days of Rain*, *Reverse Transcription*, and the 2005 Original Cast.

**Courtney Outlaw** (Frau Fahrenkopf), a sophomore from Hico, has appeared at SFA in *Anton in Show Business* and *Raised in Captivity*. Her crew credits include *Hair*, *Six Characters in Search of an Author*, *The Yellow Boat*, and *Shooting Simone*.

**Nathaniel Reid** (Herr Fahrenkopf) is a freshman from Austin. He acted in *Charley's Aunt* and *The Marriage of Figaro* at Sam Bass Community Theatre. He was on the running crew for the Downstage production of *Raised in Captivity*.

**Cassidy C. Risien** (Understudy Maxine) is a sophomore from Dripping Springs. She appeared in the Mainstage production of *Anton in Show Business*. Her Downstage credits include *Bobby Gould in Hell* and *The Waste Disposal Unit*.

**Savannah Seilheimer** (Hannah Jelkes) is a junior from Garland. Her Mainstage credits include *Anton in Show Business* and *Harvey*. She has also worked on crews for *The Tempest* and *The Member of the Wedding*.

**Caitlin Stephenson** (Maxine Faulk) has acted in England, Houston, and Singapore. She has worked in the Guthrie Theatre, the University of Minnesota's actor training program, and the American Academy of Dramatic Arts in New York City.

**Jeffrey Stirl** (Jake Latta) is a graduate student in Secondary Education; he teaches Theatre at San Augustine Intermediate School. His acting credits include roles at Northeast Texas Community College and Texas A&M - Commerce.

**Victoria Thompson** (Charlotte) acted in *The Member of the Wedding*, *Hair*, *Pericles*, *Bacchae*, *The Land of the Dragon*, and *Raised in Captivity*. She assistant directed *Harvey* and designed makeup for many Mainstage, Summer Rep, and Downstage shows.

## ABOUT THE ARTISTIC STAFF

**Angela Bacarisse** (Costume Designer) has designed over 200 productions in academic and professional theatres across the country. Her most recent SFA costume designs include *The Tempest*, *Anton in Show Business*, *The Shadow Box*, *Trudi and the Minstrel*, and *Sylvia*.

**Barbara Blackwell** (Costume Shop Supervisor) designed costumes for *The Member of the Wedding*, co-designed *Trudi and the Minstrel*, and was Costume Illustrator for *The Land of the Dragon*. She became Costume Shop Supervisor in 2000.

**CC Conn** (Lighting and Sound Designer) joined the SFA faculty this year. She has designed for theatre, dance and concert performances in Indiana and Georgia. At SFA this year she has designed lighting for *The Tempest* and lighting and sound for *Anton in Show Business*.

**Juanita Finkenberg** (Fight Choreographer) earned her MA from California State University in Los Angeles. She is a dancer and a certified fight choreographer. She has worked all four seasons of the New Plays Festival, as well as on such recent plays as *The Tempest*, *Hair*, and *The Two Maples*.

**Christopher Flores** (Stage Manager) is a sophomore from Austin. His SFA stage management credits include *Anton in Show Business*, *The Shadow Box* and *Raised in Captivity*. He was also Assistant Stage Manager for *The Member of the Wedding* and *Hair*.

**Lauren Glass** (Assistant Stage Manager) is a freshman from Clear Creek High School in League City, where she was Stage Manager for *A Christmas Carol*, *A Midsummer Night's Dream*, and *Oklahoma*. At SFA she served on the props crew for *Anton in Show Business*.

**Darrell D. Grant** (Make-up Designer) was Assistant Choreographer for *The Tempest* and *Die Fledermaus*. He has acted in *The Tempest*, *The Shadow Box*, *Trudi and the Minstrel*, *Hair*, *A Fallen Man*, *Pericles*, *Die Fledermaus*, *The Two Maples*, and the Original Cast 2003-2004.

**C. Dexter Kinsman** (Assistant Director) was Assistant Director and Dramaturg for *Hair* and Assistant Director for *The Yellow Boat* and *Fifth Sun*. He also directed the Studio Hour *Prague Summer* and will be directing *Picnic on the Battlefield* this semester.

**Sarah D. Long** (Assistant Costume Designer) is a senior from Bonham. She was Wardrobe Master for the Mainstage production of *The Tempest* and has twice worked on the wardrobe crews for the Original Cast. Other crew work includes *Six Characters...*, *Bacchae*, and *Falstaff*.

**Tomy Mathys** (Scenic Designer) has taught for 40 years at SFA, where he has designed over 200 productions. His most recent scenic designs include *The Tempest*, *Anton in Show Business*, *The Shadow Box*, *Trudi and the Minstrel*, *Sylvia*, *The Member of the Wedding*, and *Harvey*.

**Matthew Reeves Oliver** (Hair Designer) has worked on hair and makeup crew for *The Tempest*, *Anton in Show Business*, *The Member of the Wedding*, *Die Fledermaus*, and *Six Characters in Search of an Author*. He also acted in *The Two Maples* and directed *The Red Coat*.



## ABOUT THE ARTISTIC STAFF (CONT.)

**Allen Oster** (Director) is a native of North Dakota. His most recent SFA directing credits include *The Shadow Box*, *Hair*, and *Sideways Stories from Wayside School*. He administers the Student-Directed Productions Program and directs SFA's High School Summer Workshop. He received the Teaching Excellence Award for the University in 1996. He received his MFA in Directing from the University of Utah and has acted and directed professionally.

**Catherine Ann Restivo** (Dramaturg) is a freshman from Conroe. She was Projection Operator for *Raised in Captivity* at SFA last fall. Cathy has acted in *Macbeth* at Conroe High School and in *The Glass Menagerie* with the Crighton Players.

**Meaghan Rosenberger** (Assistant Stage Manager) is a freshman from Sugar Land. She was Assistant Stage Manager for *The Tempest* and on wardrobe crew for *Anton in Show Business*. Meaghan will also be stage managing *Picnic on the Battlefield* this semester.

**Steven H. Shirey** (Technical Director) holds a BFA from SFA and an MFA from USC. In addition to being Technical Director since 2001, he has designed scenery for the 2004 Festival of New American Plays and lights for both Mainstage productions and operas at SFA.

**Christopher L. Ward** (Assistant Scenic Designer) is a junior from Garland. He has designed such productions as *Raised in Captivity* and *The Whole Shebang*. Chris also served as Second Assistant Set Designer for *A Christmas Carol* with the Dallas Theatre Center.

## ABOUT THE PLAY & THE PLAYWRIGHT

Tennessee Williams portrays characters with deep inner turmoil in most, if not all, of his works. Kenneth Tynan wrote in "Valentine to Tennessee Williams" that, to Williams, the theatre "... is a place where one has time for the problems of people to whom one would show the door if they came to one's office for a job... Much of what has happened to them has also happened to him... He is the most personal of playwrights. Incomplete people obsess him - above all, those who, like himself, have ideals too large for life to accommodate...." *The Glass Menagerie*, *A Streetcar Named Desire*, *Cat on a Hot Tin Roof*, *The Night of the Iguana* and many of his other works illustrate characters struggling with depression, sexuality and relationships with other humans.

In 1940, Williams went to the Costa Verde hotel fleeing from a troubled affair and trying to repress a "blue devil," as he liked to call his depressions. He claimed that he remembered this summer "more vividly, on the emotional level, than any summer that (he had) gone through before or after..." He made personal discoveries about what he truly desired in the world: life. While in Mexico he started writing a short story with a similar setting and a slightly different plot called *The Night of the Iguana*, but he didn't start writing the play until the late 1950s, almost 20 years later. He wrote in memory of one of the most vivid moments of his life to display the struggles of desperation and human contact.

-- Catherine Ann Restivo, Dramaturg

## THE CAST

Pancho .....	Tim Olivares*
Maxine Faulk .....	Caitlin Stephenson
Pedro .....	Christopher J. Gamel
Rev. T. Lawrence Shannon .....	Chris Howell
Wolfgang .....	Chad McElveen
Hilda .....	Jessee Foudray
Herr Fahrenkopf .....	Nathaniel Reid
Frau Fahrenkopf .....	Courtney Outlaw
Hank .....	Robert "Chewy" Minshew
Miss Judith Fellowes .....	Jessica Harkness
Hannah Jelkes .....	Savannah Seilheimer*
Charlotte Goodall .....	Tori Thompson*
Nonno (Jonathan Coffin) .....	Sean Tyler McDaniel*
Jake Latta .....	Jeffrey Stirl

Understudy for Maxine Faulk ..... Cassidy C. Risien

Understudy for Rev. Shannon .... Chris Kennedy \*

## SYNOPSIS OF SCENES

Act One, Scene 1: Afternoon

Act One, Scene 2: Later that afternoon.

### 15-minute intermission.

Act Two: That night.

The play takes place in the summer of 1940 in the Costa Verde Hotel in Puerto Barrio, on the west coast of Mexico.

\* Designates a member of the Beta Phi cast of Alpha Psi Omega, the national honorary dramatics fraternity.

## FROM THE DIRECTOR

*And so as kinsmen met a-night  
We talked between the rooms  
Until the moss had reached our lips  
And covered up our names -*

Emily Dickinson

*The Night of the Iguana* is set on the verandah of a rustic hotel on the coast of Mexico in the summer of 1940. To this torrid, primitive way station come the Reverend T. Lawrence Shannon, a defrocked Episcopal priest leading a group of American women on a tour; Hannah Jelkes, a Nantucket spinster and artist; her aged grandfather, Jonathan Coffin (Nonno), "the world's oldest living and practicing poet"; a group of Germans, exultant over Hitler's early war victories—all of them guests of the hotel's proprietor, the formidably crude Maxine Faulk. Over one steamy day and a stormy night, Shannon confronts the demons of frantic sexuality, religious guilt and emotional confusion, and he learns from both the earthy simplicity of Maxine and cool serenity of Hannah. . .

No one could have foreseen then—although several may have suspected—that this would be considered Williams's last great work for the theatre. Certainly it has a poetic depth of compassion, and it allows hope even while it proclaims the author's love for Nonno and for the natural saintliness of Hannah and the tortured but still searching Shannon. These three characters were closest to the playwright's heart, and they had the greatest value for him as poet, as artist, as struggling believer. . .

What is very clear is that to be redeemed for meaning is to find a way through the jungle, and this we can do only in the company of one another.

"His theme," Arthur Miller reflected years later, "is perhaps the most pervasive in American literature, where people lose greatly in the shadow of the mountain from whose peak they might have had a clear view of God. It is the romance of the lost yet sacred misfits, who exist in order to remind us of our trampled instincts, our forsaken tenderness, the holiness of the spirit of man."

- from *The Kindness of Strangers*  
by Donald Spoto

## THE TECHNICAL STAFF

Technical Director .....	Steven H. Shirey
Costume Shop Supervisor .....	Barbara Blackwell
Assistant Stage Managers .....	Lauren Glass, Meaghan Rosenberger
Assistant Scenic Designer .....	Christopher L. Ward
Assistant Costume Designer .....	Sarah D. Long
Master Electrician .....	Ella Haag
Lightboard Operator .....	José Marez
Soundboard Operator .....	Clint Hanna
Properties Mistress .....	Amanda Chandler
Special Effects .....	Philip Miatech, Zach Russell
Scenery Construction .....	Theatre 150 and 350
Properties Crew .....	Catherine Anderson, Arianna Bermudez, Nashanna Gates, Izchel Hernandez, Casey Stephens, Stephanie Tilley, Sarah Zabinski
Light Hang Crew .....	Ryan Angell, Robert Bills *, Jeff Lochmann, Nick Mills, Weston Wetzel, Stephen Witkowicz *
Paint Crew .....	Lacey Carnley, David Francis, Katie Jones *, Ashleigh "Grace" Lubeck, Shawna Lynch *, Mark McManus, Brandon Polanco, Ryan Williams, Jason Zednick
Wardrobe Head .....	Boni Newberry *
Costume Construction .....	Theatre 150 and 350
Wardrobe Crew .....	Brittany Djie, Julie Glover, Stephanie Rhoades, Kevin Scholtes
House Managers .....	Aslan Hollier, J. Alan Spence
Ushers .....	Theatre majors and minors
Programs .....	Rick Jones, Tim Olivares *
Box Office Supervisor .....	Diane Flynn
Publicity .....	Sylvia Bierschenk, Office of Arts Information

## ACKNOWLEDGMENTS & SPECIAL THANKS

Angela Bacarisse, Dr. C. W. Bahs,  
Wil & Jennie Blough (Don's Plants),  
La Carreta Mexican Restaurant,  
Hobby Lobby, Hardy Meredith, Steve Shirey

**THE NIGHT OF THE IGUANA** is produced  
by special arrangement with  
Dramatists Play Service, Inc.

**SFA School of  
Theatre  
Faculty and Staff**

Dr. Richard Berry  
*Dean, College of Fine Arts*

Dr. Clarence W. Bahs  
*Professor and Director of  
the School of Theatre*

Ms. Angela Bacarisse  
*Assistant Professor*

Ms. Carolyn Conn  
*Assistant Professor*

Dr. Richard Jones  
*Associate Professor*

Mr. Kyle Kennedy  
*Assistant Professor*

Mr. Tomy Matthys  
*Associate Professor*

Dr. Alan Nielsen  
*Professor*

Mr. Allen Oster  
*Professor*

Mr. Jack Heifner  
*Playwright-in-Residence*

Ms. Shari Ellsworth  
*Lecturer*

Ms. Juanita Finkenberg  
*Adjunct Faculty*

Mr. Brad Maule  
*Adjunct Faculty*

Mr. David Raine  
*Adjunct Faculty*

Ms. Barbara Blackwell  
*Costume Shop Supervisor*

Mr. Steve Shirey  
*Scene Shop Supervisor*

Ms. Nelda Hartley  
*Administrative Assistant*

**Friends of the Arts  
Theatre Division  
Theatre Board**

Betty Ann Taylor (Pres.)  
Anne & David Norton (VPs)  
Stephanie George (Secy./Treas.)  
Frances Spruiell (Council Rep)  
Stacy Jacob Borders,  
Susan Conley, John Hibbard,  
John & Molly Hill,  
Michael Langford,  
Nancy Lemberger, Brad Maule,  
Melissa McMillian-Cunningham,  
Bo Miller, Gary Pankratz,  
David Raines & Dana Henderson,  
Linda Renfro, Jodie Stone,  
Bill Taylor

**Scholarships  
2005-06**

**Alumni Scholars**  
Thomas Brazzle, Justin Cole,  
Chad Kinsman,  
Natalie Melcher, Erin Orr

**Regents Scholars**  
Sara Boland-Taylor,  
Jessee Foudray, Sara Jones,  
Meaghan Rosenberger

**School of Theatre  
and Other Scholarships**  
Justin Bauer, Sara Boland-Taylor,  
Jessica Findell, Chris Gamel,  
Nashanna Gates, Lauren Glass,  
Micah Goodding, Ella Haag,  
Xzavien Hollins, Sara Jones,  
Shawna Lynch, Nadaha McCullough,  
Mark McManus, Philip Miatch,  
Boni Newberry, Brandon Polanco,  
Josh Real, Melissa Recalde,  
Meaghan Rosenberger,  
Kevin Scholtes, Casey Stephens,  
Tori Thompson, Sarah Zabinski

SIFA  
*School of* **Theatre**  
STEPHEN F. AUSTIN STATE UNIVERSITY

**Spring 2006 Mainstage Season  
Faculty-Directed Productions**

***The Night of the Iguana***

by Tennessee Williams ..... **February 21-25**

***A Festival of New American Plays***

Directed by Jack Heifner ..... **April 25-29**

*All performances in the Downstage Theatre*

***China Dolls***

by Jack Heifner ..... April 25 & 28 at 7:30

***States of Grace***

by James McLure ..... April 26 at 7:30 & April 29 at 2:00

***Changing***

by Gretchen Cryer ..... April 27 & 29 at 7:30

**Spring 2006 Downstage Season  
Student-Directed Productions**

7:30 p.m. Friday; 2:00 and 7:30 p.m. Saturday

***The Open Meeting***

by A. R. Gurney ..... **February 10-11**

***The Laramie Project***

by Moises Kaufman ..... **March 3-4**

***Goodbye Oscar***

by Romulus Linney ..... **March 24-25**

***Picnic on the Battlefield***

by Fernando Arrabal ..... **April 7-8**

# Friends of the Arts, Art, Music and Theatre

Membership Period: Through February 9, 2006

## Diamond

Mr. and Mrs. Edward Cole  
Nacogdoches Memorial  
Hospital

## Gold

Patrick and Valerie Bray  
Ann Bradshaw Stokes  
Foundation  
Nacogdoches Convention and  
Visitors Bureau

## Silver

3M Investments No. 2 LLC  
Elaine Burgess Ashcroft  
Bancorp South  
Richard and Debbie Berry  
Ms. Marian G. Compton  
Drs. Tito and Lupe Guerrero  
Mrs. Melva Diana Haney  
Ms. Melva Hines  
Dr. David Lewis  
Medical Center Hospital  
Ms. Sarah M. Mills  
George and Peggy  
Schmidbauer  
The Drs. Dolamu and Modupe  
Sokunbi  
Gerard and Carrie Ventura  
Dr. and Mrs. Larry Walker  
Wednesday's Child Benefit  
Corporation  
Mr. and Mrs. Robin Welch  
Tom and Peggy Wright

## Bronze

David and Eloise Adams  
Frances Adams  
Dr. and Mrs. James A. Allums  
Mrs. Elisabeth Bilan  
Dr. Louise Bingham  
Dr. and Mrs. Roger L.  
Campbell  
Dr. Jill Carrington  
Citizens 1st Bank  
Mr. and Mrs. Lee Danis  
Pat Dolan & Linda Mock  
Mrs. Lynn Fisher  
Dr. and Mrs. Bill Gandy  
Dr. John W. Goodall  
Mr. and Mrs. Alan P. Jones  
Mr. and Mrs. Robert W.  
Kastenmeier  
Mr. and Mrs. Jim McCain  
Mrs. Charlotte B. Montgomery  
Sue S. Muckleroy  
David and Michelle Sandoz  
Mike and Barb Stump  
Dr. Nancy Wisely

## Sponsor

Mr. Fred J. Allen  
Andrews and Andrews,  
Attorneys at Law  
Mr. and Mrs. Jeff Badders  
Dr. and Mrs. Arthur Benoy  
Ed and Marsha Blount  
Mr. and Mrs. Gerald Clapp  
Ms. R. Yvette Clark  
Lee and Susan Danis  
Richard and Lucille DeWitt  
Jack R. Erwin Family  
Gound Chevrolet Company

Tito and Lupe Guerrero  
Durdward and Mary Henry  
Jesse and Hollis Jones  
Robert Kinsell and Judy  
Morgan-Kinsell  
Mrs. Robert Kline  
Mr. and Mrs. Jerry Moore  
Max and Carolyn Morley  
Bill and Sue Parsons  
Jim and Margaret Perkins/  
Citizens 1<sup>st</sup> Bank  
Mr. and Mrs. David Prince  
Barbara and Richard  
Pulaski  
Dr. and Mrs. Sid Roberts  
Elizabeth and Thornton  
Savage  
Mr. James E. Seale  
Wayne and Mary Ann  
Slagle  
Mr. and Mrs. Douglas V.  
Smith  
Mr. and Mrs. Joseph Smith  
Shannon L. Smith M.D.,  
F.A.C.S.

Mrs. Jean Stephens  
Ms. Stephanie Stephens  
Mrs. Kimberly Stockseth  
Joyce and Doug  
Swearingen  
Mrs. Greg Tate and Rick  
Hurst  
Mrs. Margie Tipton  
The Rev. Doug and Cheryl  
Tucker  
Ms. Irene H. Waters  
Mike White and Shannon  
Smith  
Mr. and Mrs. Edwin Whittle  
Gayle D. Wyatt

## Patron

Elizabeth Akamatsu and  
Piero Fenci  
Ron and Bobbie Ann  
Anderson  
Mrs. Barbara Arwood  
Mrs. Marianne M. Ashy-  
Davis  
Dr. Shakoor A. Awan  
Ms. Sharon Bailey  
Mr. Roger P. Bartel  
Mr. and Mrs. Al Bem  
Mrs. Kathi Berridge  
Rich and Charlotte Bock  
Mr. James Terry Bourdier  
Mr. and Mrs. Marc C.  
Brigham  
Mr. and Mrs. Gary L.  
Brittain  
Mr. and Mrs. H. J. Brunotte  
Ms. Susan Bryan  
Roland and Claire Bunge  
George P. Campbell  
Mr. Brent C. Cannon  
Earl and Christine Carter  
Castleberry, Barham &  
Heard Insurance  
Ms. Caroline Suzanne  
Chandler  
Dr. Robert L. Clifford  
Susan Cox Conley  
Mr. Tim Connolly In Honor  
of Trevor Connolly

Mr. and Mrs. Alfred  
Danheim  
John and Doris Daniel  
Daughters of the American  
Revolution  
Mr. Robin Dawley  
Mr. and Mrs. Donald K. Day  
Dr. and Mrs. John P. Decker  
Mrs. Nancy Delaney  
Mr. and Mrs. Robert  
Delgado  
Mr. and Mrs. Skipper M.  
Drost  
Mr. and Mrs. Tracy L.  
Estelle  
Fairbanks Title Agency, Inc.  
Dr. and Mrs. Ivan Filippo  
Mel and Juanita Finkenber  
Todd and Amy Fish  
Ms. Anna Fleckenstein  
Mr. Gary Q. Friedls  
Col. and Mrs. Harvey W.  
Gillette  
Mr. and Mrs. Lupe Gonzales  
Mrs. Bettie Griffin  
Ms. Laura L. Guthrie  
Jerry and Toni Hale  
Mr. Larry Harkness  
Ms. Sheila Henderson  
Mr. and Mrs. Guy Hicks  
Mrs. Melva Hines  
Mrs. Sherry Houston  
Dr. and Mrs. Jack W.  
Hudgins  
Tony and Anne Jacobs  
Mr. and Mrs. Jim Jenkins  
Mr. and Mrs. Ray C.  
Kindel  
Mr. and Mrs. Ray Klodzinski  
Mr. Ed Konderia  
Dr. Forrest T. Kroschel  
Mr. and Mrs. Robert John  
Kruger  
Mr. and Mrs. Jerry M.  
Lancaster  
March of Dimes  
Dr. and Mrs. Travis Mast  
Mr. and Mrs. Gary Matocha  
Jan and Catherine McDaniel  
Dr. Darrel and J.P.  
McDonald  
David and Debra McKinney  
Mr. and Mrs. Joseph E.  
Miller  
Mr. William Miller  
Mel and Virginia  
Montgomery  
Dr. and Mrs. John T. Moore  
Milton and Lila Moore  
Roland and Jean Muckleroy  
Andrew and Kim Mytelka  
Nacogdoches County  
Republican Women  
Nacogdoches ISD  
Mr. Les Neal  
Dr. and Mrs. John R. Pack  
Gary L. Pankratz  
Mr. Ron Patrick  
Ms. Gretchen Patterson  
Bill and Barbara Patton  
Mr. Asa Peavy  
Mr. and Mrs. Robert C.  
Pfullmann

Ms. Kathleen Phillips  
Ladeen and Jim Pluss  
Mr. and Mrs. Mark Powell  
Mrs. Sheri W. Prejan  
Camille and Kenneth Price  
Kathryn and Randy Price  
Leon and Debbie Ray  
Ms. Cassandra Redd  
Mr. Donald Richter  
Dr. F. Barry Roberts  
Dr. Patricia Read Russell  
Justin Dominic Ryan  
Mr. and Mrs. Robert John Sabol, Jr.  
Mr. and Mrs. H. J. Schexnayder, Jr.  
Mr. and Mrs. Tom Schwab  
Mr. and Mrs. Val Sharp  
Mrs. Cindy L. Silberman  
Thomas and April Lynn Smith  
Tip and Nanny Smith  
Mrs. Agnes W. Sparks  
Mr. and Mrs. Roger Sparks  
Mr. Mark C. Spurlock  
Dr. Jack and Rebecca Stanly  
Dr. Julie and Mr. Mark Stephens  
Mr. and Mrs. Bruce A. Stevenson  
Mr. and Mrs. Thomas Thompson  
Orville Todd  
Ms. Karen Michelle Towle  
Tyler County Art League Compass  
Ms. Linda Sue Wallace  
Mr. Robert Conrad West and Mrs.  
Holly Foye-West  
Ms. Wyndell Westmoredland  
Mr. and Mrs. Hank Wiederhold  
Mr. and Mrs. Norman M.  
Wington  
Billy and Carol Willis  
Mr. and Mrs. Thomas D. Wright  
Mr. and Mrs. Richard Young

## Contributor

Mr. and Mrs. Mike Aikin  
Mr. Joseph D. Alford  
Mr. Bert and Dr. Mary Appleberry  
Ms. Jami Arnst  
Carol Athey and Ranleigh  
McAdams  
Ms. Veida Axley  
Clarence and Barbara Babs  
Dr. and Mrs. Bruce Bailey  
Dr. Rebecca Bailey  
Dr. and Mrs. Flamen Ball  
Dr. and Mrs. Ronnie Barra  
Scott and Susan Bartos  
Dr. Claudia Beach  
Mr. Roland Hugh Bear  
Mr. and Mrs. Gary L. Beard  
Mr. and Mrs. Miguel Blanco  
Mrs. N. G. Bright  
Shelley Brophy  
Betty F. Burr  
Dean and Theresa Cable  
Mr. Robert J. Cavanagh  
Mr. and Mrs. Fred Chandler  
Shelba Coe  
Mr. Ben Cooper  
Mr. and Mrs. Mark D. Cooper  
Tommy and Margaret Cordova  
Mr. and Mrs. Daniel Cotten  
Campbell and Peggy Cox  
Ms. Leilabeth W. Crispin  
J. Kelly Cunningham and Melissa  
McMillian-Cunningham

**Friends of the Arts, Art,  
Music and Theatre (continued)**

Ms. Katherine T. Davis  
Mr. and Mrs. W. I. Davis, Jr.  
Alicia and Richard Deupree  
East Texas Appraisal Services  
Mr. and Mrs. Mike Emmert  
Ms. Christie Ferraraccio  
Judson J. and Carol W. Fisk  
Mr. Clarence Fogelstrom  
Barton and Masako Gaskin  
Mrs. Jean Gore  
Mr. and Mrs. John R. Hicks  
Mr. Lawrence Homan  
Mr. Howard Horton  
Mr. and Mrs. Charles Hukill  
Dr. and Mrs. Oren C. Irlion  
Louise Jacks  
Mr. and Mrs. Brandon R. Johns  
Mrs. Jerry K. (Joan) Johnson  
Charles and Corinne Jones  
Lisa Rice Jones  
Mr. and Mrs. Reese Kennedy  
Carolyn S. King  
Mrs. Rebecca G. (Stanly) King  
Mr. and Mrs. Ray Klodzinski  
Mr. Steven Kullback  
Mrs. Carolyn Lacy  
Judith and Ken Lauter  
Mr. David C. Lawson  
Dr. Nick and Donna Gaston  
Manitzas  
Dr. Rebecca Mars  
Dolores M. Martin  
Valroy and Adelia Kaye  
Maudlin  
Mr. Michael S. Maurer  
Ms. Deborah McCratie  
Mr. and Mrs. Clyde  
McCullough  
Drs. Tom and Sylvia McGrath  
Mr. and Mrs. George  
McKinney  
Sarah McMullan  
Mr. and Mrs. Phillip Medford  
Mrs. Otilie Milliken  
Mr. and Mrs. Edgar Mirabal  
Mrs. Karen Mobbs  
Mrs. Cynthia Nussenblatt  
The Old South Garden Club  
Mr. and Mrs. Michael E.  
Olivares  
Mr. and Mrs. Edward Paschall  
Joseph and Patricia Pate  
Carissa A. Poe  
Martha Jo Price  
Ms. Charlotte Jo Pruitt  
Mr. and Mrs. Keith Reed  
Joan and Allen Richman  
Mr. and Mrs. Curtis Rickman  
Mr. and Mrs. Ray Rinker  
Mr. and Mrs. Eugene Rolston  
Val and Suzanne Rose  
Mr. Brent Roycroft  
Mr. and Mrs. John Ruckel  
Mrs. Carol Denise Scandel  
Ms. Wanda C. Schenk  
Ms. Deborah L. Schroeder  
Mr. and Mrs. Ronald L. Sedtal  
Dr. and Mrs. Vyrne Shofner  
Mr. Bradley Ryan Smith  
Mr. and Mrs. David Smith  
Mr. and Mrs. Sidney R. Smith  
Sue and Leon Smith  
James and Sandy Snyder

John and Donna Peueto  
Stephens  
John J. Stransky  
Ms. Betty Ann Taylor  
Ms. Colleen Terrell  
Mrs. Nancy Terry  
Mr. and Mrs. Tim Tindell  
Mr. and Mrs. Jerry D.  
Vickery  
Richard and Sarah Wallace  
Warren and Sandy Wallace  
Dr. and Mrs. Arthur C.  
Watson, Jr.  
Mr. and Mrs. Floyd (Dock)  
Watson  
Mr. Steven Watson  
Irene Perkins Welch  
Ms. Joselyn Winter  
Mr. Kurt E. Zecchin

**Member**  
Tim and Vicki Baggett  
Mike Bay  
Ms. Jackie L. Byler  
Mr. Christian Cole  
Wanda Cuniff  
Ms. Marilyn Davis  
Annette Dawson  
O'Neal and Ster Dubberly  
Dr. and Mrs. Dale Dupuis  
Pam and Alan Fitch  
Stephanie George  
Mrs. Charles Grimland  
Mrs. Marie Hargrove  
Sam and Johnnie Faye  
Hattman  
Durward and Mary Henry  
Neal and Joan Houston  
Rick and Christy Hurst  
Ms. E. A. Keller  
Mrs. Lucille Kennedy  
John and Patti Langston  
Don Lawler  
Ryan and Anna  
Middlebrook  
George and Sarah Alice  
Millard  
Mrs. Mildred Murphy  
Shelley H. Musgrave  
Catherine and William  
Niggle  
David and Anne Norton  
David O'Neill  
Mr. and Mrs. Buddy Ryan  
Mr. and Mrs. Robert W.  
Schmitz  
Mrs. Mary Jo Schnorbus  
Francis Spruiell  
Mr. and Mrs. Mark  
Surman  
Mr. Donald and Dr. Sharon  
Templeman  
Ms. Ellen L. Thomas-  
Armstrong  
Mrs. Mary Alice Thompson  
Captain Joe Wicks  
Shirley R. Watterston in  
memory of Dirk Wheeler  
Mrs. Judith D. Williamson  
Carol Marie Wilson  
Ms. Linda Zakrzewski

**Friends of the Arts,  
University Series**

**Membership Period:**  
September 1, 2005, through August 31, 2006  
Current to February 9, 2006

**Impresario**  
Stephen F. Austin State  
University

**Producer**  
The Daily Sentinel

**Director**  
BancorpSouth Fredonia  
Citizens 1st Bank  
Commercial Bank of Texas  
Glaucoma Consultants of East  
Texas  
Lehmann Eye Center  
Nacogdoches Medical Center  
Hospital  
Regions Bank Stone Fort  
Tipton Ford-Lincoln-Mercury,  
Inc.

**Designer**  
A. G. Edwards & Sons, Inc.,  
Shannon Smith  
Mr. and Mrs. Jeff Badders  
First Bank and Trust  
FrameSaver of Nacogdoches  
Gound Chevrolet Company  
Tito and Lupe Guerrero  
Kennedy's Jewelers  
Nacogdoches Memorial Hospital  
SFA Alumni Association  
SFA Foundation  
Timber Springs at SFA

**Artist**  
Austin Bank of Nacogdoches  
Betty F. Burr  
Fredonia Hotel and Convention  
Center  
Huntington State Bank  
Joe Max Green Insurance  
Concepts  
Mize Department Store  
Michael Mollot, M.D.  
R. & K Distributors, Inc.  
The UPS Store  
Wendy Wyatt Buchanan, Edward  
Jones Investments  
Tom and Peggy Wright

**Guarantor**  
Ambiance  
Mr. and Mrs. Edward Cole  
Curtis & Clark Engineering, LLC  
Dr. and Mrs. Robert Z. Eanes  
Excel Car Wash, Inc.  
Grogan Clean Care  
House of Versailles Perfumery  
McKnight Financial Services  
Mr. and Mrs. James H. Moore  
Nacogdoches Eye Associates  
Nacogdoches Gastroenterology  
Ray Johnston Counseling  
Services  
Dr. F. Barry Roberts  
Triad Office Solutions  
University Rental, Elder  
Enterprises

The Varsity Book Store  
Xerographix East Texas

**Sustainer**  
Elaine Burgess Ashcroft  
Joe and Sylvia Bierschenk  
Mrs. Elisabeth Bilan  
Dr. Louise Bingham  
Dr. Mary Cullinan  
Fern Faulkner  
Mel and Juanita Finkenberg  
Durward and Mary Henry  
Adele Hyncik  
Bob and Joan Lawson  
Mr. and Mrs. Dale Litton  
Mrs. Theresa Reeves  
LTC Ben J. Sultenfuss

**Supporter**  
John F. Anderson and Ann  
Doyle-Anderson  
Anonymous  
Dr. and Mrs. Stewart Barron  
Philip and Mitzi Blackburn  
Mr. and Mrs. Jack A. Burnell  
Dr. Sue Butts  
Mrs. Kent Castle  
John and Doris Daniel  
Dr. and Mrs. John P. Decker  
George and Patricia Fitch  
George and Deanne Franks  
Ms. Deborah K. Garrett  
Ms. Jayne Garrison  
Dr. and Mrs. Malcolm  
Graham  
Mildred Hancock  
Mr. and Mrs. Alvin J. Hejl  
Dr. June Irwin  
Drs. Gary Konrad and  
Catherine Albers  
Mrs. Ted and Janice Ledet  
Ms. Jeanette Milstead  
Roland and Jean Muckleroy  
Dr. and Mrs. Jack Nelson  
Jimmy and Peggy Partin  
Carolyn M. Price  
Peggy Price  
Ms. Linda Renfroe  
Don Richter  
Dr. Patricia Read Russell  
Ms. Mary Grace Simms  
Russell and Trish Smith  
Sue and Leon Smith  
Dr. and Mrs. Jack Stanly  
Jodie Stone in memory of  
Charlene Manley  
Bob and Shirley Szafran  
Gerard and Carrie Ventura  
Dr. and Mrs. Arthur C.  
Watson, Jr.





**Chevy Colorado Crew Cab**

# **GOUND CHEVROLET**

**MARK OF EXCELLENCE AWARD WINNER**

Serving Nacogdoches since 1953

*Our Commitment:  
To give our customers the best in  
Sales and Service*



**silverado**

## UNIVERSITY SERIES

Dean, College of Fine Arts .....	Richard Berry
Programming and Development .....	John W. Goodall
SFA Gallery .....	Shannon Bailey
Arts Information .....	Sylvia Bierschenk
Box Office and Audience Services .....	Diane J. Flynn
Facilities Manager .....	Steven Shirey
House Manager .....	Joshua Alan Spence
Ushers .....	Phi Mu Alpha Sinfonia

## FOR YOUR INFORMATION

### Tickets

Charge tickets conveniently by phone. Visa, Mastercard, American Express and Discover are accepted. Normal box office hours are weekdays 8 am to 5 pm. On performance dates, the Box Office is open 8 am to performance time on weekdays and one hour prior to performance time on Saturdays and Sundays. The Box Office is located in Room 211B in the Griffith Fine Arts Building. Programs on the University Series are not recommended for children under five years of age. Each member of the audience must have a ticket regardless of age.

### Late seating

In fairness to those already seated, patrons who have the misfortune to arrive late will be seated near the rear of the auditorium during an appropriate break in the performance.

### Parking

Parking in front of the Griffith Fine Arts Building is available to those patrons who join the FRIENDS OF THE ARTS UNIVERSITY SERIES at the SUPPORTER Level. Parking in other campus areas is available. We recommend Vista Dr., the parking garage off Griffith Blvd. south of the University Center, the lot behind the University Police Department off of East College St. and the lot on the corner of North St. and Wettermark. Please allow ample time for your arrival.

### Persons with disabilities

Persons with disabilities are requested to reserve seats as soon as possible to request special assistance or accommodations needed for participation in events. Parking is provided in front of the Griffith Fine Arts Building on Alumni Drive. The elevator is located in the East Tower (campus side). Locations for wheelchair seating are available on the first floor of the W. M. Turner Auditorium. Program booklets in large type are available for visually impaired persons. Please call the Box Office at least two days in advance of the event and a copy will be held for you.

### Rest Rooms

Rest rooms and drinking fountains are located in the lobby adjacent to the auditorium on the first level and in the hallway outside the balcony.

### Telephone

A public telephone is located in the East Tower, main level, next to the elevator.

### Food, beverages and smoking

Please do not take food or drinks into the auditorium. The use of tobacco products is not permitted in the Griffith Fine Arts Building.

### Cameras, paging devices, cell phones and other electronic devices

Please deactivate all electronic devices before entering the auditorium. Patrons may also check them with our ushers prior to entering the auditorium so they may be guarded by the House Manager. Patrons who expect to be on call while attending a performance are requested to leave their names and seat locations with the House Manager. You will be contacted immediately and discreetly when called. Cameras and recording devices are not permitted in the auditorium.

### Ticket Exchange Policies

Season Ticket patrons may exchange tickets until two business days prior to the event. We regret there can be no refunds. All sales are final.

View our complete ticket exchange policy online at [www.finearts.sfasu.edu](http://www.finearts.sfasu.edu) or stop by the Box Office to receive a printed copy.

### Mailing lists

To receive information about future attractions in the College of Fine Arts, please complete a mailing list card available at the Box Office or call 468-6407.

### Lost and found

Patrons who lose articles while attending an event may make inquiries with the House Manager or call the Box Office during regular office hours.

### To contact us, call:

Dean, College of Fine Arts .....	468-2801
Programming and Development .....	468-1303
Arts Information .....	468-5820
Box Office .....	468-6407
or toll free .....	(888) 240-ARTS

*Saluting the performing and visual arts*

Stephen F. Austin State University



Free checking    Full-service Saturday banking  
Home and auto loans    Online banking  
MasterMoney debit card    Trust & investment services



*Big enough to serve. Small enough to care.*

1009 N. University Drive • (936) 559-5100

[www.fbtet.com](http://www.fbtet.com)



Member  
**FDIC**

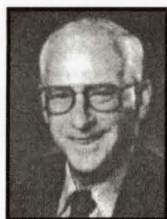
Cleveland • Diboll • Hemphill • Jasper • Kirbyville • Lufkin  
Nacogdoches • Pineland • San Augustine • Splendora

**Curtis & Clark  
Engineering, LLC**

Nacogdoches, Texas  
564-5356



HELPING YOU  
UNDERSTAND  
AND BENEFIT  
FROM  
DEREGULATION



**MICHAEL MOLLOT, M.D.**

*Specializing in*  
STOMACH & COLON DISORDERS  
Endoscopy • Liver Disease • Colon  
**569-6449**



Two Locations  
1225 N. Mound & 619 Russell Blvd.

COLON CANCER  
DETECTED

*We Proudly Support  
The Performing and Visual Arts  
at  
Stephen F. Austin State University*

**RESPONSIBILITY  
MATTERS**



ANHEUSER-BUSCH, INC.

*Budweiser*  
KING OF BEERS.

**R & K Distributors, Inc.**

You might not be able to do everything at once, you can however do it all in one place.



Let us help you with that.

The UPS Store™

Shipping Services

Packaging Services

Mailbox & Postal Services

Copying Services

Finishing & Printing Services



The UPS Store #3855  
3205 N. University Ste #D  
Nacogdoches, TX 75965

(Across from the Post Office)

Tel: (936)559-5614

Fax: (936)559-0434

Email:

store3855@theupsstore.com

Jodie Stone, Owner

©2003 United Parcel Service of America, Inc.



*Another Round of Applause for the*

***SFA University  
Series!***

**Citizens 1st BANK**

3010 University Dr. • 936-560-1401 • [www.citizens1stbank.com](http://www.citizens1stbank.com)



Your Community.  
Your Paper.



**The Daily Sentinel**

For subscription or advertising  
information call

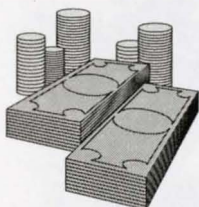
**564-8361**

[www.dailysentinel.com](http://www.dailysentinel.com)

# AMBIANCE

Home Furnishings - Gifts - Interior Design

303 North Street | Nacogdoches | 564-4906



## McKnight Financial Services

*Retirement • Investments • Life Insurance  
Long-Term Care • Health Insurance*

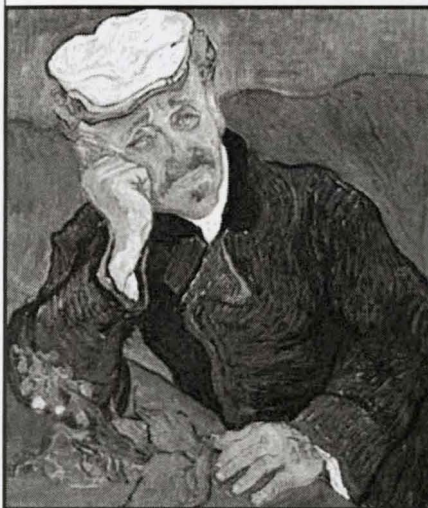
Financial Planning that meets your needs.

**Bob McKnight**  
**Roger McKnight**  
Phone: (936) 564-2307

**Wes McKnight**



McKnight Financial  
Services



**THIS PAINTING WAS ONCE  
AUCTIONED FOR OVER  
\$85 MILLION DOLLARS TO AN  
ENTHUSIASTIC COLLECTOR.**

**HE MUST HAVE HAD  
OVERDRAFT PRIVILEGE.**

**FREE CHECKING WITH OVERDRAFT PRIVILEGE  
FROM HUNTINGTON STATE BANK.**

**JUST ONE OF THE MANY PRODUCTS OFFERED TO  
HELP YOU ENJOY THE FINER THINGS IN LIFE.**

*(other charges may apply)*

**4822 NORTH ST. | 462.8800 | WWW.HUNTINGTONSTATEBANK.COM**

**COME GROW WITH US!**



# HSB

**HUNTINGTON STATE BANK**



Equal Housing  
Lender

Member FDIC

**Coming soon**

# Timber Springs

at SFA

**A Premier Retirement Campus**



*A lifestyle of grace and beauty  
A lifestyle of art and learning  
A lifestyle of freedom and enjoyment  
The Timber Springs at SFA Lifestyle*

**Call to reserve your place today!  
1.800.940.0411**

East Texas' only university-affiliated retirement campus! *Timber Springs* at SFA is proud to support The University Series 2005-2006 Season.





# The Fredonia

*Hotel and Convention Center*

(936) 564-1234

Email: [reservations@fredoniahotel.com](mailto:reservations@fredoniahotel.com)

See us at: [www.fredoniahotel.com](http://www.fredoniahotel.com)

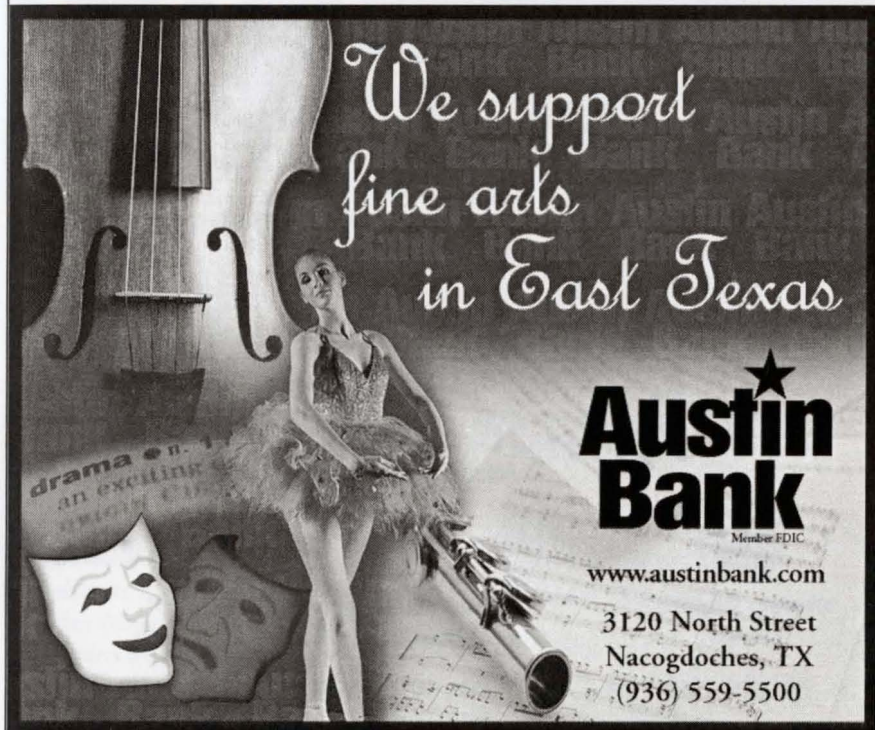
200 North Fredonia Street • Nacogdoches, Texas 75961

We support  
fine arts  
in East Texas

**Austin  
Bank**  
Member FDIC

[www.austinbank.com](http://www.austinbank.com)

3120 North Street  
Nacogdoches, TX  
(936) 559-5500



# Grogan Clean Care

## **24-HOUR EMERGENCY SERVICE**

Carpet Cleaning      Certified Operators  
Oriental Rugs - Hand Washed

Keith and Pat Grogan, Owners    1406 East Starr    564-5722

## XEROGRAPHIX

### EAST TEXAS

#### PROMPT LOCAL SERVICE

Xerox products to meet every need and every budget

- Color Copiers
- Digital Solutions
- Fax Machines
- Laser Printers



424 North Street • Nacogdoches, TX • 936-569-1992



## NACOGDOCHES EYE ASSOCIATES

Since 1925

*Eyecare for those who know the difference*

3208 N. University Drive, Suites B & C  
Nacogdoches

564-7661 or 564-EYES

**Mark Lanier, O.D.**  
Therapeutic Optometrist

**Ashley Risner, O.D.**  
Therapeutic Optometrist  
and Low Vision Consultant

## *The House of Versailles*

Paris  *Perfumery & Gifts*



**Christy Rogers**  
Owner

280 Ladies' Perfumes • 80 Men's Colognes  
Gels, Powders, Lotions & Soaps  
Crabtree & Evelyn® Burt's Bees®  
Circle E® • Votivo® • Jewelry & Gifts

936-569-1818 • M-F 10-6 • Sat. 10-4 • 404 E. Main, Nacogdoches

# NOW PLAYING

## *And Baby Makes Three*

*Directed by:*



*Sheila Hill, M.D. Kim Schaus, M.D.*

*After 9 Months of Waiting!  
Don't Miss the Dramatic Debut!*

### THE CAST

(In order of appearance)

The Mom ..... Mom  
The Dad ..... Dad  
Doctors..... Dr. Sheila Hill  
                  Dr. Kim Schaus  
The Baby.....Baby

### THE SETTING

This new and exciting play takes place in a custom-made labor and delivery suite at Nacogdoches Memorial Hospital. Providing the ultimate in comfort and privacy, they deliver a complete bundle of services individually packaged for each expecting family.



**NACOGDOCHES**  
*Memorial Hospital*

1204 MOUND ST. • 936-564-4611  
PHYSICIAN REFERRAL 569-7777

[www.nacmem.org](http://www.nacmem.org)

*2005-2006  
College of Fine Arts  
Season Sponsor*



**ROLEX**



OYSTER PERPETUAL DATEJUST AND LADY-DATEJUST

*Kennedy's*  
**JEWELERS**

201 East Main  
Nacogdoches  
(936) 564-7671, Fax (936) 564-2650