

University of New Hampshire
University of New Hampshire Scholars' Repository

Earth Sciences Scholarship

Earth Sciences

4-2006

Evaluation of trends in derived snowfall and rainfall across Eurasia and linkages with discharge to the Arctic Ocean

Michael A. Rawlins

University of New Hampshire - Main Campus

C.J. Willmot

University of Delaware

A Shiklomanov

University of New Hampshire - Main Campus, alex.shiklomanov@unh.edu

Ernst Linder

University of New Hampshire, ernst.linder@unh.edu

Steve Frolking

University of New Hampshire - Main Campus, steve.frolking@unh.edu

See next page for additional authors

Follow this and additional works at: https://scholars.unh.edu/earthsci_facpub

Recommended Citation

Rawlins, M. A., C. J. Willmott, A. Shiklomanov, E. Linder, S. Frolking, R. B. Lammers, and C. J. Vörösmarty (2006), Evaluation of trends in derived snowfall and rainfall across Eurasia and linkages with discharge to the Arctic Ocean, *Geophys. Res. Lett.*, 33, L07403, doi:10.1029/2005GL025231.

This Article is brought to you for free and open access by the Earth Sciences at University of New Hampshire Scholars' Repository. It has been accepted for inclusion in Earth Sciences Scholarship by an authorized administrator of University of New Hampshire Scholars' Repository. For more information, please contact nicole.hentz@unh.edu.

Authors

Michael A. Rawlins, C J. Willmot, A Shiklomanov, Ernst Linder, Steve Froking, Richard B. Lammers, and Charles Vorosmarty

Evaluation of trends in derived snowfall and rainfall across Eurasia and linkages with discharge to the Arctic Ocean

M. A. Rawlins,¹ C. J. Willmott,² A. Shiklomanov,¹ E. Linder,³ S. Frolking,¹
R. B. Lammers,¹ and C. J. Vörösmarty¹

Received 14 November 2005; revised 21 December 2005; accepted 4 January 2006; published 12 April 2006.

[1] To more fully understand the role of precipitation in observed increases in freshwater discharge to the Arctic Ocean, data from a new archive of bias-adjusted precipitation records for the former USSR (TD9813), along with the CRU and Willmott-Matsuura data sets, were examined for the period 1936–1999. Across the six largest Eurasian river basins, snowfall derived from TD9813 exhibits a strongly significant increase until the late 1950s and a moderately significant decrease thereafter. A strongly significant decline in derived rainfall is also noted. Spatially, snowfall increases are found primarily across north-central Eurasia, an area where the rainfall decreases are most prominent. Although no significant change is determined in Eurasian-basin snowfall over the entire 64 year period, we note that interpolation from early, uneven station networks causes an overestimation of spatial precipitation, and that the local snowfall trends determined from gridded TD9813 data are likely underestimated. Yet, numerous uncertainties in historical Arctic climate data and the sparse, irregular nature of Arctic station networks preclude a confident assessment of precipitation-discharge linkages during the period of reported discharge trends. **Citation:** Rawlins, M. A., C. J. Willmott, A. Shiklomanov, E. Linder, S. Frolking, R. B. Lammers, and C. J. Vörösmarty (2006), Evaluation of trends in derived snowfall and rainfall across Eurasia and linkages with discharge to the Arctic Ocean, *Geophys. Res. Lett.*, *33*, L07403, doi:10.1029/2005GL025231.

1. Introduction

[2] Changes are occurring in the Arctic climate and hydrological cycles [Serreze *et al.*, 2000; Peterson *et al.*, 2002]. Increasing winter-average air temperatures [Rawlins and Willmott, 2003], reductions in sea-ice thickness and extent [Serreze *et al.*, 2003b], and a significant increase in river discharge of 0.22 mm yr^{-1} from 1936–1999 across Eurasia [Peterson *et al.*, 2002] have been documented. River discharge increases have the potential to impact global climate through alterations in the oceanic thermohaline circulation [Rahmstorf, 1995; Broecker, 1997]. Warming is predicted to enhance atmospheric moisture storage

resulting in increased net precipitation, since precipitation increases will likely exceed evaporative losses [Arctic Climate Impact Assessment, 2005].

[3] With the potential for increased net freshwater input to the terrestrial Arctic, precipitation emerges as a likely source for the observed discharge trend. In a study of the possible effects of dams, melting of permafrost, and fires on river discharge, McClelland *et al.* [2004] suggested that increased precipitation is the most plausible source for the observed discharge trend. Annual total precipitation, however, has generally decreased across the three largest Eurasian basins since 1936 [Berezovskaya *et al.*, 2004]. Given this apparent disagreement between precipitation and river discharge, analysis of changes in seasonal precipitation is relevant to our understanding of the discharge trends. Indeed, increases in spring runoff across the Yenisey basin in central Eurasia during the period 1960–1999 have been linked with an increase in winter precipitation and earlier snowmelt [Serreze *et al.*, 2003a]. Acknowledging the challenges in deriving climate change signals from a sparse network of observations which contain numerous uncertainties, our study analyzes seasonal precipitation drawn from historical station data to better understand the role of precipitation in the river discharge increases from Eurasia.

2. Data and Methods

[4] Monthly station precipitation (P) time series are taken from NCDC's Dataset 9813, "Daily and Sub-daily Precipitation for the Former USSR" [National Climatic Data Center, 2005], which originated at the Russian Institute for Hydrometeorological Information-World Data Center of the Federal Service for Hydrometeorology and Environmental Monitoring, Obninsk, Russian Federation. Precipitation records in this archive (hereinafter TD9813) contain adjustments to account for wetting losses, i.e., moisture on the gauge walls, changes in gauge type and observing practices, and wind-induced errors (see TD9813 documentation and references therein). Among these inconsistencies, the undercatch errors due to aerodynamic effects of wind are generally greatest, particularly in winter [Groisman *et al.*, 1991]. Biases due to change in gauge type are also significant, while wetting losses are typically smallest. Bias adjustments are vital in order to accurately ascertain "true" changes in precipitation over time [Yang *et al.*, 2005; Forland and Hanssen-Bauer, 2000]. We also use monthly P and air temperature (T) data from the Willmott-Matsuura (WM) archive (C. J. Willmott and K. Matsuura, Arctic terrestrial air temperature and precipitation: Monthly and annual time series (1930–2000) version 1, <http://climate.geog.udel.edu/~climate/>, 2001) and from CRU v2.0 data

¹Water Systems Analysis Group, Institute for the Study of Earth, Oceans, and Space, University of New Hampshire, Durham, New Hampshire, USA.

²Center for Climatic Research, University of Delaware, Newark, Delaware, USA.

³Department of Mathematics and Statistics, University of New Hampshire, Durham, New Hampshire, USA.

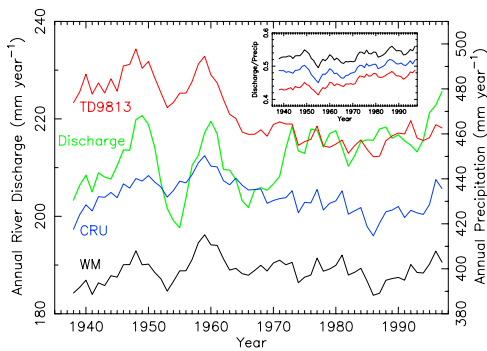


Figure 1. Five-year running means of spatially averaged river discharge (Q , mm yr^{-1}) and precipitation (P , mm yr^{-1}) across the 6 largest Eurasian river basins from 1936–1999. Inset shows the ratio of annual discharge to annual precipitation.

[Mitchell *et al.*, 2004]. Monthly P from TD9813 were interpolated to the $25 \text{ km} \times 25 \text{ km}$ EASE-Grid using inverse-distance-weighted interpolation. CRU T and P at $0.5^\circ \times 0.5^\circ$ resolution were sampled at each EASE-Grid. In contrast to the new TD9813 archive, CRU and WM data contain no adjustments for biases in the precipitation records. Spatial aggregations of the gridded data are made across the 6 largest Eurasian river basins; the Severnaya Divina, Pechora, Ob, Yenisey, Lena, and Kolyma. Annual snowfall (water equivalent) at each grid is calculated by examining T each month to estimate the fraction of monthly P as snowfall, and then summing those monthly snowfall amounts over the year. The ratio (R) of monthly snowfall to total monthly P is: $R = [1.0 + 1.61 \cdot (1.35)^T]^{-1}$, where T is the monthly mean in $^\circ\text{C}$ and $0 \leq R \leq 1$ [Legates and Willmott, 1990]. This function was derived using a logistic curve fit to monthly data and has a reported mean absolute deviation of $0.06 \text{ mm month}^{-1}$. Annual rainfall in a given year is totaled from the monthly amounts using $P \cdot (1 - R)$. River discharge (Q) records are drawn from an updated version of R-ArcticNET [Lammers *et al.*, 2001].

[5] Slope and significance from ordinary least squares regression are computed for spatially averaged annual rainfall across the Eurasian basin and for rainfall/snowfall at each EASE-grid over the region. A change-point regression method [Draper and Smith, 1981; Müller *et al.*, 1994] was applied for annual snowfall integrated over the Eurasian basin given the shape of the time series. This method determines optimal mid-series change-points by minimizing the sum of squared residuals of all possible change-point regressions. Serial autocorrelation was assessed graphically by plotting autocorrelation functions and numerically by calculating Durbin-Watson test statistics. Temporal correlations were not found at a 5% significance level.

[6] Potential biases in spatial P induced when gridding from irregular station networks was estimated by attempting to recreate total precipitation in 1972 using the available station networks each year from 1936–1999. In 1972 the station network was most dense, with 1549 and 341 stations having complete records across the former USSR and within the Eurasian basin, respectively. Starting from the 1972 station network, we sampled annual P at only those stations in operation each year for 1936, 1937 ... 1999.

Those subsets of station P were then interpolated to the grids prior to spatial averaging across the Eurasian basin.

3. Linkages Between Precipitation and Discharge

[7] A significant correlation ($p < 0.01$) is noted among all three precipitation time series for the Eurasian basin (Figure 1). Annual precipitation is also correlated with annual discharge ($p \sim 0.05$ for TD9813), although the Pearson's correlation coefficient is low ($r = 0.26, 0.41, 0.35$, for TD9813, CRU, and WM respectively.) Correlations are not expected to be high given year-to-year changes in water storage over the landscape. The correlation over the period 1936–1970, however, is 0.55, 0.56, and 0.53, respectively. Thereafter, annual discharge increases yet precipitation declines. Discharge/precipitation (Q/P) ratios are highest between 1970–1990 (inset Figure 1).

[8] Estimating snowfall increases over northern lands is important, since snowmelt there occurs on frozen soils with low infiltration rates. A relatively small fraction of this water will evaporate and a larger proportion will run off. The ratio of runoff volume to snowmelt volume was found to have averaged 34% greater than the ratio for cumulative summer runoff and rainfall [Kane *et al.*, 2003]. Precipitation occurring during summer undergoes considerably more recycling to the atmosphere and contributes more to soil recharge. It has been estimated that approximately 25% of July precipitation across northern Eurasia is of local origin [Serreze *et al.*, 2003a], i.e., associated with the recycling of water vapor within the domain.

[9] Annual snowfall derived from TD9813 precipitation exhibits a strongly significant increase (0.75 mm yr^{-1}) until the late 1950s followed by a moderately significant decrease (-0.30 mm yr^{-1}) thereafter (Figure 2 and Table 1). Strongly significant early increases (1.19, 0.96) are also noted for snowfall derived from CRU and WM, with insignificant decreases during the latter period. No significant change is noted in snowfall derived from TD9813 over the entire 1936–1999 period. The early snowfall increases derived

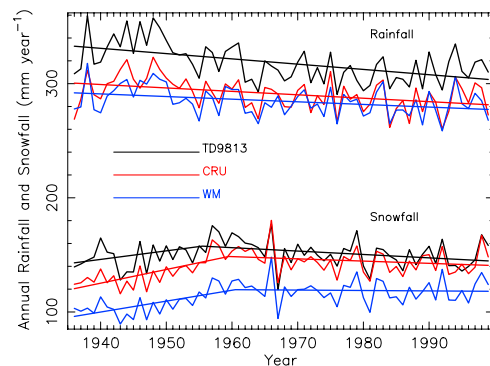


Figure 2. Spatially averaged water equivalent of annual rainfall and snowfall across the 6 largest Eurasian basins. Snowfall is derived using monthly gridded P data from TD9813, CRU, and WM data sets. Gridded monthly T is used to proportion monthly P to snowfall: $R = [1.0 + 1.61 \cdot (1.35)^T]^{-1}$, T is in $^\circ\text{C}$ and $0 \leq R \leq 1$ [Legates and Willmott, 1990]. Change-point regression [Draper and Smith, 1981; Müller *et al.*, 1994] is applied to the snowfall series. Annual rainfall is computed using $1 - R$.

Table 1. Trends in Annual P , Snowfall, and Rainfall Derived From TD9813, WM, and CRU P for 1936–1999^a

Data Set	Annual P	Snowfall			Rainfall
	Trend, mm yr ⁻¹	Trend1, mm yr ⁻¹	Trend2, mm yr ⁻¹	Change-Point, year	Trend, mm yr ⁻¹
TD9813	-0.49 ^b	0.75 ^b	-0.30 ^c	1955.5	-0.46 ^b
CRU	-0.06	1.19 ^b	-0.20	1960.5	-0.30 ^b
WM	0.07	0.96 ^b	-0.04	1959.5	-0.23 ^b

^aTrend1 and Trend2 are the change-point regression slopes for the early and late periods, respectively (see Figure 3a).

^bTrends significant at $p < 0.01$.

^cTrends significant at $p < 0.05$.

from CRU and WM precipitation are likely influenced by change in gauge type during the 1948–1953 period [Groisman *et al.*, 1991], and homogenization of the station records would tend to reduce the early trends. Such bias adjustments likely make the TD9813 data more representative of the true precipitation changes over time. It should also be noted that means and trends from CRU and WM are remarkably similar, despite differing methods used to grid the station data. Spatially, positive local trends drawn from the entire 1936–1999 period are noted primarily across north-central Eurasia, while negative trends occur across eastern Siberia (Figure 3a). These increases in derived snowfall are consistent with positive trends in winter P (4–13% decade⁻¹) across western Siberia [Frey and Smith, 2003] and snow depth across most of northern Russia [Ye *et al.*, 1998]. The geography of the snowfall changes is important to note, since they occur primarily across colder, northerly regions where soils have a limited capacity for infiltration during snowmelt.

[10] Consistent decreases in spatially averaged rainfall over the entire Eurasian basin have occurred (Figure 2). The magnitude of the rainfall decrease is greater than the snowfall increase (Table 1), consistent with the reported [Berezovskaya *et al.*, 2004] decline in total precipitation. Rainfall decreases are greatest across north-central Eurasia (Figure 3b), the area where positive snowfall trends are noted. A positive trend in 500 hPa height anomalies across much of northern Eurasia between 1960–1999 [Serreze *et al.*, 2003a] may be linked with the rainfall decrease during that time.

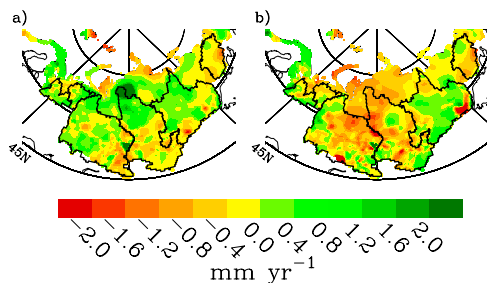


Figure 3. Trends (a) in derived snowfall and (b) in derived rainfall (1936–1999) from TD9813 P at each 25×25 km EASE-Grid cell encompassing the 6 largest Eurasian basins. Additional shaded areas are part of the larger pan-Arctic drainage basin of Eurasia. Spatially averaged values presented in this study (see Figures 1, 2, and 4) represent integrations across the 6 basins (west to east: *Severnaya Divina*, *Pechora*, *Ob*, *Yenisey*, *Lena*, *Kolyma*) outlined in bold.

[11] Biases arising when interpolating from spatially uneven networks can be significant [Willmott *et al.*, 1994]. Station networks across Eurasia, for example, give rise to an overestimation of annual precipitation during earlier years (Figure 4). Early networks originated in the south and gradually expanded northward. Although true precipitation derived from the best Arctic networks is difficult, if not impossible, to know with certainty, we estimate a bias of well over +10 mm in the early network representations of spatial precipitation. A similar bias is noted when alternate base years are used. For assessments of continental-scale precipitation aggregations, early station networks essentially over-represent precipitation due to their uneven spatial arrangement.

4. Summary and Conclusions

[12] Annual precipitation across the Eurasian basin drawn from the gridded data are correlated with observed river discharge over the period 1936–1999. Annual discharge has become a larger fraction of total precipitation during this time. Annual snowfall derived from the new bias-adjusted TD9813 precipitation data set exhibits a highly statistically significant increase until the late 1950s and a moderately significant decrease thereafter. Annual rainfall has declined significantly. Interpolations from the uneven, early station networks result in a biased depiction of spatially averaged precipitation, meaning that real local snowfall increases over the region were likely greater, and the rainfall decreases were possibly less, than the changes determined

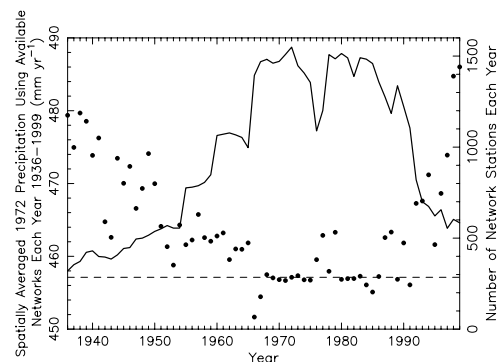


Figure 4. Annual total P for 1972 (dots) interpolated and spatially averaged from each yearly station network. The dashed line represents spatially averaged P for 1972, a year with the highest number of stations in the network between 1936–1999. The number of stations each year (solid line, right axis) mirrors the yearly network estimates of 1972 total precipitation.

from analysis of gridded data sets such as CRU and WM. While we believe that our partitioning of rainfall and snowfall contains no systematic bias, the method itself is crude, and we emphasize that the computed trends depend on the quality of interpolations from sparse precipitation and air temperature observations. Although our study suggests that increased cold season precipitation may be a significant driver of the discharge change, inherent biases in early meteorological networks and uncertainties in the historical precipitation observations render this finding intriguing, yet inconclusive.

[13] **Acknowledgments.** The authors thank Kenji Matsuura (University of Delaware) for his assistance with the Willmott-Matsuura data. We also acknowledge the comments of two anonymous reviewers which helped to improve the manuscript. This study was supported by the NSF ARCSS program and NSF grants OPP-9910264, OPP-0230243, OPP-0094532, and NASA grant NAG5-9617.

References

- Arctic Climate Impact Assessment (2005), *Arctic Climate Impact Assessment—Special Report*, Cambridge Univ. Press, New York.
- Berezovskaya, S., D. Yang, and D. L. Kane (2004), Compatibility analysis of precipitation and runoff trends over the large Siberian watersheds, *Geophys. Res. Lett.*, *31*, L21502, doi:10.1029/2004GL021277.
- Broecker, W. S. (1997), Thermohaline circulation, the Achilles heel of our climate system: Will man-made CO₂ upset the current balance?, *Science*, *278*, 1582–1588.
- Draper, N. R., and H. Smith (1981), *Applied Regression Analysis*, John Wiley, Hoboken, N. J.
- Forland, E. J., and I. Hanssen-Bauer (2000), Increased precipitation in the Norwegian Arctic: True or false, *Clim. Change*, *46*, 485–509, doi:10.1023/A:1005613304674.
- Frey, K. E., and L. C. Smith (2003), Recent temperature and precipitation increases in West Siberia and their association with the Arctic Oscillation, *Polar Res.*, *22*, 287–300.
- Groisman, P. Y., V. V. Koknaeva, T. A. Belokrylova, and T. R. Karl (1991), Overcoming biases of precipitation measurement: A history of the USSR experience, *Bull. Am. Meteorol. Soc.*, *72*, 1725–1733.
- Kane, D. L., J. P. McNamara, D. Yang, P. Q. Olsson, and R. E. Gieck (2003), An extreme rainfall/runoff event in Arctic Alaska, *J. Hydrometeorol.*, *4*, 1220–1228.
- Lammers, R. B., A. I. Shiklomanov, C. J. Vörösmarty, B. M. Fekete, and B. J. Peterson (2001), Assessment of contemporary Arctic river runoff based on observational discharge records, *J. Geophys. Res.*, *106*, 3321–3334.
- Legates, D. R., and C. J. Willmott (1990), Mean seasonal and spatial variability in gage-corrected global precipitation, *Int. J. Climatol.*, *10*, 111–133.
- McClelland, J. W., R. M. Holmes, B. J. Peterson, and M. Stieglitz (2004), Increasing river discharge in the Eurasian Arctic: Consideration of dams, permafrost thaw, and fires as potential agents of change, *J. Geophys. Res.*, *109*, D18102, doi:10.1029/2004JD004583.
- Mitchell, T. D., T. R. Carter, P. D. Jones, M. Hulme, and M. New (2004), A comprehensive set of high-resolution grids of monthly climate for Europe and the globe: The observed record (1901–2000) and 16 scenarios (2001–2100), *Working Pap. 55*, Tydall Cent. for Clim. Change Res., Norwich, U. K. (Available at <http://www.cru.uea.ac.uk/>.)
- Müller, H. G., E. Carlstein, and D. Siegmund (1994), Change-Point Problems, *Inst. Math. Stat. Lecture Notes Monogr. Ser.*, vol. 23, Beechwood, Ohio.
- National Climatic Data Center (2005), Daily and Sub-Daily Precipitation for the Former USSR, <http://www.ncdc.noaa.gov>, Natl. Geophys. Data Cent., Boulder, Colo.
- Peterson, B. J., R. M. Holmes, J. W. McClelland, C. J. Vörösmarty, R. B. Lammers, A. I. Shiklomanov, I. A. Shiklomanov, and S. Rahmstorf (2002), Increasing river discharge to the Arctic Ocean, *Science*, *298*, 2171–2173.
- Rahmstorf, S. (1995), Bifurcations of the Atlantic thermohaline circulation in response to changes in the hydrological cycle, *Nature*, *378*, 145–149.
- Rawlins, M. A., and C. J. Willmott (2003), Winter air-temperature change across the terrestrial Arctic, 1961–1990, *Arct. Antarct. Alp. Res.*, *35*, 530–537.
- Serreze, M. C., et al. (2000), Observational evidence of recent change in the northern high-latitude environment, *Clim. Change*, *46*, 159–207.
- Serreze, M. C., M. P. Clark, and D. H. Bromwich (2003a), Large-scale hydroclimatology of the terrestrial Arctic drainage system, *J. Geophys. Res.*, *108*(D2), 8160, doi:10.1029/2001JD000919.
- Serreze, M. C., M. P. Clark, D. H. Bromwich, A. J. Etringer, T. Zhang, and R. Lammers (2003b), Monitoring precipitation over the Arctic terrestrial drainage system: Data requirements, shortcomings, and applications of atmospheric reanalysis, *J. Hydrometeorol.*, *4*, 387–407.
- Willmott, C. J., S. M. Robeson, and J. J. Fiedema (1994), Estimating continental and terrestrial precipitation averages from raingauge networks, *Int. J. Climatol.*, *14*, 403–414.
- Yang, D., D. Kane, Z. Zhang, D. Legates, and B. Goodison (2005), Bias corrections of long-term (1973–2004) daily precipitation data over the northern regions, *Geophys. Res. Lett.*, *32*, L19501, doi:10.1029/2005GL024057.
- Ye, H., H. R. Cho, and P. E. Gustafson (1998), The changes in Russian winter snow accumulation during 1936–1983 and its spatial patterns, *J. Clim.*, *11*, 856–863.

S. Frolking, R. B. Lammers, M. A. Rawlins, A. Shiklomanov, and C. J. Vörösmarty, Water Systems Analysis Group, Institute for the Study of Earth, Oceans, and Space, University of New Hampshire, 39 College Rd., Durham, NH 03824, USA. (michael.rawlins@unh.edu)

E. Linder, Department of Mathematics and Statistics, University of New Hampshire, Durham, NH 03824, USA.

C. J. Willmott, Center for Climatic Research, University of Delaware, Newark, DE 19716, USA.