

Manuscript Number:

Title: Monocyte subsets in blood correlate with obesity related response of macrophages to biomaterials in vitro.

Article Type: FLA Original Research

Section/Category: Biomaterials and Regenerative Medicine (BRM)

Keywords: biomaterials; in vitro model; obesity; monocyte subsets; macrophages

Corresponding Author: Miss. Geesien S.A. Boersema, M.D.

Corresponding Author's Institution: Erasmus Medical Center

First Author: Geesien S.A. Boersema, M.D.

Order of Authors: Geesien S.A. Boersema, M.D.; Lizette Utomo; Yves Bayon; Nicole Kops; Erwin van der Harst; Johan F Lange; Yvonne M Bastiaansen-Jenniskens

Abstract: Macrophages play a key role in the foreign body response. In this study it was investigated whether obesity affects the acute response of macrophages to biomaterials in vitro and whether this response is associated with biomarkers in blood. CD14⁺ monocytes were isolated from blood from obese and age and gender matched lean persons. Monocyte subsets were determined based on CD14 and CD16 on their surface. C-reactive protein (CRP) was measured in peripheral blood. The response of monocyte-derived macrophages to polypropylene (PP), polylactic acid (PLA), polyethylene terephthalate (PET) monofilament, and PET-multifilament (mPET) in culture was based on cytokine production. More IL-6 (for PET), less CCL18 (all materials) and IL-1ra (for PLA) was produced by macrophages from obese patients than lean subjects. Body mass index, serum CRP and to a lesser extend percentages of monocyte subtypes correlated with IL-6, TNF α , CCL18, and IL-1ra production. Taken together, monocyte-derived macrophages of obese patients respond more pro-inflammatory and less anti-inflammatory to biomaterials than macrophages from lean subjects, depending on the material. These results are a step towards personalized medicine for the development of a model or even a blood test to decide which biomaterial might be suitable for each patient.

Rotterdam, The Netherlands, 27-06-2016

Dear professor Leong or whomever it may concern,

We are pleased to submit our revised manuscript entitled: '**Monocyte subsets in blood correlate with obesity related response of macrophages to biomaterials in vitro**', again for consideration as an original article in Biomaterials. This manuscript provides an original research about different response of macrophages from obese and lean patients on different biomaterials that are common used for regenerative medicine.

Unfortunately, last time the manuscript could not be accepted, but encouraged by prof Grainger, who said that the work was of high quality and would be of interest to the biomaterials community, we adjusted the paper with the comments of the reviewers and add some more extra experiments, and a point-by-point response in this cover letter (and separately added in the submission).

This manuscript has not been previously published and is not under consideration in the same or substantially similar form in any other peer-reviewed media. We hope that the manuscript will now be considered for publication in Biomaterials.

On behalf of,

Y.M. Bastiaansen-Jenniskens, PhD (corresponding author)
y.bastiaansen@erasmusmc.nl
Department of Orthopedics

Sincerely,

G.S.A. (Simone) Boersema
Department of Surgery/ Orthopedics
Erasmus Medical Centre Rotterdam
g.boersema@erasmusmc.nl
phone nr. +31 (0)6 18 34 20 21

Reviewer #1:

Leptin, which is secreted by adipocytes, would be of interest as a parameter for obesity in addition to CRP. Please provide a rationale for the selection of the clinical parameters in the introduction.

answer: We thank the reviewer for his/her suggestion to measure leptin. Our aim was to examine the effect of obesity on the macrophage-biomaterial interaction and whether this correlates to parameters in the blood in a clinical context. CRP was therefore chosen because it is indeed a standard clinical parameter for general inflammation and it was used as a standard measurement prior to surgery in our patient population, especially in people undergoing bariatric surgery. This is now also added to the introduction/materials and methods.

Experimental setup should be better described. The manuscript would benefit from a picture of the culture system, samples, and experimental approach.

answer: We apologize for being not clear in the experimental set up. A diagram is made to provide more clarity.

For the biomaterial study, yarn was used. From our experience achieving consistent seeding results on yarn or structured materials is difficult. How do the authors ensure that cells stayed on the biomaterial during culture and did not attach to the culture vessel? Please elaborate the description of the culture device and the seeding method.

answer: Before conducting the study with patient cells, pilot experiments were performed to determine the optimal material configuration allowing as much cells to be attached as possible. Disks, meshes and braided yarns (spool knit) were compared and the braided yarns resulted in the highest DNA amount directly after seeding and after culture. The braided materials are created of a mix of micro- and macro-porosity that favors cell attachment, particularly for monofilaments, and even more particularly, for polypropylene monofilaments. We did not make any effort to ensure cells would stay on the biomaterials. However, to ensure that medium is only conditioned by cells that adhered to the material and not by cells that adhered to the culture well, the yarns were replaced into new culture wells 24 hours prior to harvesting the culture medium. The culture system and seeding method is now included in the drawing that also depicts the experimental setup.

Furthermore, the cell surface ratio should be standardized for all materials. Otherwise interpretation of results is not possible. The currently used normalization on density does not consider the surface for cell attachment.

answer: All tested materials were braided according to a similar pattern and with same volumic density, corrected by the g/cm^3 values by each material. Since cell attachment was indeed different between materials, also because of different properties of the materials, we normalized the protein data to the amount of DNA as an indication for the cell number. We think that by normalizing for DNA, we adjust for variation in cell number allowing us to have a clear image of the production of cytokines per cell, not influenced by the number of cells that adhered to the material. More information on this is now provided in the materials and methods.

Cytokine panel for characterization of pro- or anti-inflammatory effects is rather low. In general, higher numbers of different cytokines are used to characterize the material-cell interaction, e.g. Jaguin, M., et al. (2013) Cell Immunol 281(1): 51-61, Verreck, F. A. W., et al. (2006) Journal of Leukocyte Biology 79(2): 285-293.

answer: Indeed, very often, many cytokines are measured to examine the response of macrophages to biomaterials. However, we had a limited amount of culture medium due to the low number of macrophages available from the patients and healthy volunteers. In addition, in our previous studies, we saw that IL6, TNFalpha, IL1ra and CCL18 are the most discriminative for different phenotypes of macrophages (1, 2). Even though it is a rather small panel of cytokines, we think that this panel allows us to determine the phenotype and behavior of the macrophages in response to the material. The rationale behind our choice of cytokines is now more clearly explained in the Materials and Methods.

In the introduction, the authors describe that TNF-alpha and IL-6 is increased in obese people. This indicates, that data should be normalized to the base level of secretion without biomaterial contact. Thus, interpretation of the results is difficult.

answer: We thank the review for this remark. Indeed, obese people have increased circulating levels of TNFalpha and IL6, most likely produced by many types of cells than the macrophages alone. This is now clearer stated in the introduction. We do not agree however that data should be normalized to baseline levels because this is also not what happens in a clinical situation. Most likely, the fact that baseline (i.e. prior to implantation of a material) production is increased in some patients, contributes to the differences seen after implantation. In addition, even though corrections were not made for baseline levels, still differences are seen between the effect of biomaterials on cells of the same patient. This is now discussed in the discussion section.

The used cells for material incubation are not described and characterized regarding their macrophage identity. Although the monocytes are identified via CD-14 and CD-16, the differentiated macrophages are neither characterized nor differentiation is externally induced by growth factors. Characterization of biomaterial-adherent cells through immune histological staining should be conducted to confirm the macrophage M1/M2 index.

answer: We have extensive experience with macrophage culture, and after monocyte isolation and adherence to the culture substrate in the presence of 20% FCS, they differentiate into macrophages expressing the typical macrophage genes (1-4). We believe that by determining the cytokine production of TNFalpha, IL6, CCL18, and IL1ra we can determine the behavior and phenotype of the cells (1), rather than by determining the presence of cell surface markers that do not provide information on the behavior of the cells.

Following cell incubation, biomaterials are transferred to a 96-well plate. Thereby, non-adherent cells are excluded from the following investigations. Nevertheless, in vivo, the ecm as well as the cells in the proximity of the biomaterial contribute to the foreign body

response. Please provide a rationale for considering only the biomaterial-adherent cell fraction.

answer: We thank the reviewer for this interesting and valid point. The rationale behind transferring the materials with adherent cells to new wells, was to measure indeed only the cytokines that were produced by the adherent cells allowing us to determine the protein production in response the biomaterials of interest only not being overshadowed by the effect TCPS might have on the macrophages, which is in fact also a biomaterial that has an influence on macrophages. TCPS most likely will have a totally different effect than the extracellular matrix that normally surrounds an implanted biomaterial. In fact, we have seen that collagen indeed exerts different effect on macrophages than polymers (2, 3). We included the remark of this reviewer about the effect of the ECM and macrophages in the close proximity in the discussion and added our rationale behind only measuring the cytokine production of the adherent cells.

In our studies, we observed differences between thawed and fresh macrophages regarding the cluster of differentiation. Please add supplementary data that shows that CD-14 and CD-16 are unaffected by freezing and thawing.

answer: Indeed, cell death was observed after freezing and thawing. However, the percentages of monocyte subsets remained the same after thawing the cells again. We agree with the reviewer that more information on flow cytometric analysis should be given and we have now added plots of analyzed fresh cells and cells from the same donor that were frozen, also providing information on how measurements were done.

Usually, for an ELISA measurement 100 μ l of sample is required. In the culture device, the author's state that 125 μ l per test conditions is available. Conditions were provided in triplicates, which results in a total volume of 375 μ l per condition. Please explain how 4 different cytokines - requiring approximately 100 μ l - could be measured based on the limited sample volume. Are diluted concentration within the detection limit of the assays?

answer: We apologize for being unclear about this. Indeed, 125 μ l of culture medium was used per well, performed in triplicate. These triplicates were kept separately, allowing us to measure every condition and experiment in triplicate. Since from experience and pilot experiments we knew that certain materials induced certain levels of cytokines, we knew that medium needed to be diluted several times prior to measurement. Since every material resulted in different dilutions for the different cytokines, we did not include the dilution factors, because this would lead to 16 different dilutions (4 materials and 4 cytokines). However, to give the reviewer an idea, the dilutions ranged from 3x to 100x, depending on the material and the cytokine. In addition, all measurements fitted within the standard curve, and if the value was too low, measurements were repeated with a lower concentration. More information is now provided in the methods section about the measurements of the cytokines.

Cytokine concentrations in FCS may impact the experiment. Relevant controls (I) passive adsorption of measured proteins on material surface, and (II) concentration of IL-6, IL-1ra, and TNF-alpha in FCS are missing. Measured cytokines usually can be found in the supplemented serum, and by binding to the surface, differences of cytokine concentrations could be explained by this effect. Measured cytokine concentrations should be interpreted in relation to blank medium following biomaterial incubation.

answer: We thank the reviewer for this remark and we agree that proper controls should be added. We now included a figure in which we determined the adsorption of our cytokines of interest to the materials and showing the values of these cytokines in our blank culture medium. As can be seen, our proteins of interest were not detectable in blank culture medium, and thus no adsorption was seen in blank culture medium. After spiking of these cytokines and chemokines however, adsorption was seen, and varying between the materials. Mostly, associations are made within a biomaterial. These comparisons and associations are therefore unaffected in our opinion. In figure 2, we are comparing materials with each other. Since PP had the most adsorption of our proteins of interest, the values for PP (and for PLA in the case of IL6) are most likely an underestimation. This is now added to the discussion.

Furthermore, the authors state that "the topography was not exactly the same", and thus the surface area was not comparable. Thus, differences of protein adsorption on different materials are increased and interpretation of results is difficult. Thus, measurements should be normalized to surface area.

answer: We now measured protein adsorption on the different materials and indeed, differences are seen in adsorption between materials. As mentioned in the answer above, most of the associations and comparisons are made within a biomaterial and a cytokine, not comparing two different cytokines or materials with each other, but comparing obese and lean patients, head and head, for all material - cytokine combinations. These comparisons and associations are therefore unaffected in our opinion by the adsorption of the protein of interest. This is now added to the discussion. Specific area is hard to be evaluated due to i) stitches shadowing some possible areas, ii) stitches creating micro porosity which favors cell adhesion, iii) multifilament with theoretical much higher surface area, but real surface much reduced due to compaction of the filaments of the multifilament yarns. To minimize differences in surface area, the amount of materials incubated with cells were adjusted in such a way to get the same volume of material for each tested material PET, mPET, PP, and PLA.

Standard deviations of absolute protein production per individual for both groups (lean and obese people) are high and indicate that the readout depends on an unknown parameter that seems to exhibit an impact comparable to obesity. Please discuss.

answer: We agree with the reviewer that it is clear that not only obesity probably influenced the response of the macrophages to the biomaterials. We made an effort to rule out as many as possible other factors such as smoking, recent implantation of a biomaterial, diabetes mellitus or the use of immunosuppressive drugs but other unknown factors can still be of influence. This is now added to the discussion.

Calculation of the M1/M2 index is rather unclear, even inconsistent. When comparing the methods and the results part, different definitions are given.

answer: We apologize for the apparent inconsistency. Accidentally the M2/M1 index was written in the materials and methods but this must be M1/M2 index as described in the results. We adjusted the description of the calculation hoping to be more clear in this.

There seems to be quite a lot of mathematics, and regarding the high standard deviations of the measured concentrations (Figure 2F) that are used to calculate the M1/M2 index, the small deviations depicted for the M1/M2 index is difficult to understand.

answer: For every cytokine, normalization was performed to the average of that cytokine level in the response to the biomaterial. Therefore, standard deviations are small. We hope that by explaining the calculation of the M1/M2 index in more detail, this is made clearer.

In contrast to CCL18, IL-6 is secreted in a 100-fold higher range, and thus weighting in the M1/M2 index is biased by cytokines exhibiting higher concentration ranges. Thus, concentrations should be normalized and scaled.

answer: Indeed, for the calculation of the M1/M2 index, a normalization is performed for every cytokine to its average within the measurements for that biomaterial. This prevents that a cytokine that is produced at higher levels has more influence on the index than a cytokine that is produced at lower levels. We hope that our earlier adjustments made this more clear.

I appreciate the personalized-medicine-aligned study approach that considers health factors of individual patients. Furthermore, to aim at a blood test that facilitates the identification of biomaterials suitable for a specific patient is of great interest. However, study design requires further controls to allow a sound characterization of the biomaterial-patient interaction. Furthermore, test conditions are not standardized (cell identity, surface area). My recommendation is to reject the manuscript.

answer: We thank the reviewer for his appreciation for our personalized-medicine-aligned study approach and we hope that by addressing his comments in detail, made adjustments, and added controls, this reviewer now thinks our paper is ready for publication.

Reviewer #2:

This is a rather phenomenological, and it is unclear if the in vitro results really represent what happens in vivo. However, the presented results open an interesting scenario worth to investigate and discuss among the scientific community, with potential impact on personalized treatments after surgery and in regenerative medicine. Therefore, this article merits consideration by biomaterials audience with some revisions to improve the quality of the manuscript

answer: We thank the reviewer for pointing out the relevance of our paper. We agree that results should not be over interpreted but that our study opens up

interesting perspective for future research and application. Therefore we adjusted a few of our sentences in the conclusions section.

1. In the abstract authors claim: " These results are a step towards personalized medicine for the development of a model or even a blood test to decide which biomaterial might be suitable for each patient." I disagree with the authors. There is no clear material-specific differences among the materials tested. There is a difference between obese and lean, and in most data the trends are similar among the tested materials.

answer: In supplementary former figure 2F, comparisons are made between the cytokine levels in response to the different materials. From this graph, we concluded that there are indeed different responses in the macrophages in response to the different biomaterials. In addition, as this reviewer points out later, differences are seen on the M1/M2 index that is based on all these cytokines. We now made this figure one of the main figures, since a part of our conclusion is based on these results.

2. In each figure (in the manuscript and in the supporting information) the number of different samples ("n") used for the experiments should be specified. This has only been done for some figures and is relevant to assess the significance of the results (authors say that they discharged certain subpopulations for the different tests)

answer: We thank the reviewer for pointing this out and added this information to all the figures.

3. The gender distribution among the samples was male/female 2/18. This should be specified not only on Table 1 but also in the experimental part.

answer: We agree with the reviewer and added this information to the plots in which individual measurements are shown (supplementary figure 2A-D). Since the distribution of male/female is different for every material and measured cytokine, we choose not to add it to the other figures, because this would decrease the clarity of the figures.

4. Figure 1: M1/M2 index between lean and obese patients changes is much larger on mPET than on PET, although it is the same material. Author should comment on this.

answer: This is indeed an interesting point raised by the reviewer and it shows that not only the polymer itself is important for the response of the macrophages to the material, but also the architecture of the material. This is now clearer discussed in the discussion section.

1. Utomo L, van Osch GJ, Bayon Y, Verhaar JA, Bastiaansen-Jenniskens YM. Guiding synovial inflammation by macrophage phenotype modulation: an in vitro study towards a therapy for osteoarthritis. *Osteoarthritis Cartilage*. 2016 Apr 14.

2. Grotenhuis N, Bayon Y, Lange JF, Van Osch GJ, Bastiaansen-Jenniskens YM. A culture model to analyze the acute biomaterial-dependent reaction of human primary macrophages. *Biochem Biophys Res Commun*. 2013 Mar 29;433(1):115-20.

3. Grotenhuis N, Vd Toom HF, Kops N, Bayon Y, Deerenberg EB, Mulder IM, van Osch GJ, Lange JF, Bastiaansen-Jenniskens YM. In vitro model to study the

biomaterial-dependent reaction of macrophages in an inflammatory environment. Br J Surg. 2014 Jul;101(8):983-92.

4. Fahy N, de Vries-van Melle ML, Lehmann J, Wei W, Grotenhuis N, Farrell E, van der Kraan PM, Murphy JM, Bastiaansen-Jenniskens YM, van Osch GJ. Human osteoarthritic synovium impacts chondrogenic differentiation of mesenchymal stem cells via macrophage polarisation state. Osteoarthritis Cartilage. 2014 Aug;22(8):1167-75.

1 **Monocyte subsets in blood correlate with obesity related response of**
2 **macrophages to biomaterials *in vitro*.**
3

4
5 G.S.A. Boersema^{a,b}, L. Utomo^b, Y. Bayon^c, N. Kops^b, E. van der Harst^d, J.F. Lange^a, Y.M. Bastiaansen-
6 Jenniskens^b
7

8
9
10
11 ^a*Department of Surgery, Erasmus MC, University Medical Center Rotterdam, The Netherlands*

12
13 ^b*Department of Orthopaedics, Erasmus MC, University Medical Center Rotterdam, The Netherlands*

14
15 ^c*Medtronic-Sofradim production, 116 Avenue Formans, 01600 Trévoux, France*

16
17 ^d*Department of Surgery, Maasstad Hospital, Rotterdam, the Netherlands*
18
19
20
21
22
23
24
25
26
27
28
29
30
31
32
33
34
35
36
37
38
39
40
41
42

43 **Corresponding author**

44
45
46 Y.M. Bastiaansen-Jenniskens, PhD
47 y.bastiaansen@erasmusmc.nl
48 Department of Orthopedics
49 Wytemaweg 80, Ee1651b, 3015 GE Rotterdam
50 Erasmus MC, University Medical Center
51 Tel: +31-10-7044626
52 Fax: +31-10-7044690
53
54
55
56
57
58
59
60
61
62
63
64
65

Abstract

1
2
3
4 Macrophages play a key role in the foreign body response. In this study it was investigated whether
5 obesity affects the acute response of macrophages to biomaterials *in vitro* and whether this response
6 is associated with biomarkers in blood. CD14+ monocytes were isolated from blood from obese and
7 age and gender matched lean persons. Monocyte subsets were determined based on CD14 and
8 CD16 on their surface. C-reactive protein (CRP) was measured in peripheral blood. The response of
9 monocyte-derived macrophages to polypropylene (PP), polylactic acid (PLA), polyethylene
10 terephthalate (PET) monofilament, and PET-multifilament (mPET) in culture was based on cytokine
11 production. More IL-6 (for PET), less CCL18 (all materials) and IL-1ra (for PLA) was produced by
12 macrophages from obese patients than lean subjects. Body mass index, serum CRP and to a lesser
13 extend percentages of monocyte subtypes correlated with IL-6, TNF α , CCL18, and IL-1ra production.
14 Taken together, monocyte-derived macrophages of obese patients respond more pro-inflammatory
15 and less anti-inflammatory to biomaterials than macrophages from lean subjects, depending on the
16 material. These results are a step towards personalized medicine for the development of a model or
17 even a blood test to decide which biomaterial might be suitable for each patient.
18
19
20
21
22
23
24
25
26
27
28
29
30

31 **Keywords:** biomaterials, *in vitro* model, obesity, monocyte subsets, macrophages
32
33
34
35
36
37
38
39
40
41
42
43
44
45
46
47
48
49
50
51
52
53
54
55
56
57
58
59
60
61
62
63
64
65

Introduction

1
2 Biomaterials are often used in several surgical disciplines such as urology, gynaecology and general
3 surgery[1]. The foreign body response to implanted biomaterials is crucial for adapting the material
4 in the human body. Macrophages play a key role in the foreign body reaction to biomaterials[2]. For
5 regenerative biomaterials, an initial pro-inflammatory (M1) response is necessary for recruiting
6 inflammatory cells to encourage the foreign body response, which are necessary events for wound
7 healing including ingrowth. However, a prolonged M1 response results in fibrous capsule formation
8 and extended inflammation. Therefore, a subsequent transition to the anti-inflammatory
9 macrophages (M2), which promotes tissue repair and remodeling, is generally presumed to be the
10 preferred modification[3]. Achieving the desired outcome is individual and biomaterial dependent.

11
12 In general, obesity seems to be an important factor for adverse outcomes after surgery. Observed
13 complications are surgical site infections, impairment of cutaneous wound healing, wound failure,
14 anastomotic leakage, and fascia dehiscence[4-6]. These complications are major risk factors to
15 develop incisional hernia or a recurrent incisional hernia after repair[7, 8]. Potential factors that
16 increase wound complications by obesity include intrinsic tenuous anatomic properties, poor
17 vascularization, and cellular and molecular alterations. Inflammatory mediators such as tumor
18 necrosis factor alpha (TNF α), interleukin 6 (IL-6), leptin, and angiotensin increase simultaneously with
19 increasing mass of adipose tissue and adipocyte size[4]. These factors negatively affect wound
20 healing and are most likely produced by many types of cells than macrophages alone. Obesity is also
21 positively correlated with oxidative stress which can lead to decreased oxygen tension and impaired
22 fibroblast proliferation and collagen synthesis[4].

23
24 Due to obesity, macrophages undergo a phenotypic switch from M2 to M1, which leads to a chronic
25 low-grade systemic inflammation[9-13]. Monocytes, the precursors of macrophages, can be divided
26 into subsets, according to their expression of the cell surface antigens CD16 (Fc γ receptor III) and
27 CD14 (a receptor for bacterial lipopolysaccharide (LPS))[14]. The classical monocyte has high CD14
28 (CD14⁺⁺) cell surface expression and is CD16 negative (CD16⁻). The non-classical monocyte also
29 expresses CD14 at its surface but at an approximately ten times lower level than the classical
30 monocyte (CD14⁺), and is positive for CD16 (CD16⁺⁺). The intermediate monocyte expresses CD14 at
31 a high level (CD14⁺⁺), and CD16 at an approximately ten times lower level than the non-classical
32 monocyte (CD16⁺). In general, monocytes expressing CD16 have a high phagocytic capacity and
33 produce more pro-inflammatory cytokines such as TNF α and IL-6, and are therefore considered pro-
34 inflammatory [15]. The classical CD14⁺⁺/CD16⁻ subset is the predominant population and accounts for
35
36
37
38
39
40
41
42
43
44
45
46
47
48
49
50
51
52
53
54
55
56
57
58
59
60
61
62
63
64
65

1 approximately 90% in healthy persons. It has been suggested that obesity leads to a shift from
2 classical towards intermediate and non-classical monocytes[16, 17].
3

4 Previous *in vitro* models have shown that culturing macrophages isolated from healthy donors on
5 different biomaterials leads to a biomaterial-specific reaction[18] and that even in a contaminated *in*
6 *vitro* model, surgical biomaterials still elicit differential reactions in macrophages[19]. These *in vitro*
7 models did not take into account patient specific characteristics, such as age, smoking, diabetes or
8 obesity. Obesity is a growing healthcare issue in the clinics and a subgroup of these patients does
9 receive a biomaterial for several reasons like abdominal wall hernia with an increased risk of
10 unwanted reactions to the biomaterial or delayed wound healing[4, 5]. Therefore, the aims of this
11 study were to investigate how obesity affects the acute host response of macrophages to
12 biomaterials *in vitro* and to examine whether this *in vitro* response can be predicted beforehand by
13 determining monocyte subsets in the blood or by measuring the systemic inflammation marker CRP
14 that is a common used clinical parameter for inflammation.
15
16
17
18
19
20
21
22
23
24
25
26
27
28
29
30
31
32
33
34
35
36
37
38
39
40
41
42
43
44
45
46
47
48
49
50
51
52
53
54
55
56
57
58
59
60
61
62
63
64
65

Methods

Study population

In total we included 20 obese patients and 20 age and gender matched healthy, lean (BMI 18-25 kg/m²) volunteers. Obese patients with a BMI >30 kg/m² were included at the department of bariatric surgery at the Maastad Hospital, Rotterdam. Exclusion criteria for both groups were smoking, diabetes mellitus, use of immunosuppressive drugs, autoimmune disease or chronic inflammatory disease, and medical history such as previous surgery or having a prosthesis (e.g. vascular implants, mesh, osteosynthesis material). This study was approved by the Medical Ethical Committee of the Erasmus University Medical Center, Rotterdam, Netherlands, in accordance with the Dutch law on medical research in humans. Permit number MEC-2014-221, NL47780.078.14. Written informed consent was obtained from all patients.

Biomaterials

Four types of biomaterials were selected for use in all experiments: polypropylene (PP; 0.9 g/cm³), polyethylene terephthalate multifilament (mPET; 1.34 g/cm³), polyethylene terephthalate monofilament (PET; 1.34 g/cm³) and polylactic acid (PLA; 1.25 g/cm³) (Figure 1). All materials were provided as yarns braided in the same conformation. All tested materials were braided according to a similar pattern and with same volumic density, corrected by the g/cm³ values by each material. The braided materials are created of a mix of micro- and macro-porosity that favors cell attachment, particularly for monofilaments, and even more particularly, for polypropylene monofilaments.

Monocyte isolation and seeding on biomaterials

Peripheral blood mononuclear cells (PBMC) were isolated from 30 mL blood of obese patients and healthy volunteers by gradient density separation using Ficoll-Paque PLUS (GE Healthcare Life Sciences, Little Chalfont, UK). The blood from the obese patients was obtained preoperatively to bariatric surgery. Monocytes were isolated by CD14⁺ selection. Briefly, the blood was diluted 1:1 with PBS (Gibco; Carlsbad, USA) supplemented with 0.1% BSA (Sigma-Aldrich, St. Louis, USA), applied on top of a Ficoll layer, and centrifuged at 900 x g for 30 minutes to acquire separation of layers. The interphases were collected and washed twice with PBS/0.1% BSA before a 20 minute incubation at 4°C with anti-human CD14 MicroBeads (Miltenyi Biotec, Bergisch Gladbach, Germany). Positive selection was performed by Magnetic-activated cell sorting (MACS). The isolated CD14⁺ monocytes were kept in suspension in X-VIVO™ 15 medium (Lonza, Verviers, Belgium) containing 20% heat inactivated fetal calf serum (FCS; Lonza), 50 µg/mL gentamicin (Gibco) and 1.5 µg/mL amphotericin B (Fungizone; Gibco), from now on referred to as 'culture medium', until seeding. Prior to seeding, the biomaterials were pre-conditioned in non-heat inactivated FCS for 2 hours at 37°C with agitation.

1 After pre-conditioning, the monocytes were seeded by rotation onto the biomaterials for 2 hours at
2 37°C at 20 rpm (VWR tube rotator, Radnor, Pennsylvania, USA). The materials were exposed to
3 850,000 monocytes per yarn at a concentration of 500,000 monocytes/mL. After seeding, the
4 materials were carefully transferred to 96-well plates (Corning Costar, NY, USA) and cultured in 125
5 µL culture medium per well. Per patient, four different materials in triplicate were cultured. The
6 culture system is shown in Figure 1. After 2 days of culture, the materials were transferred to new
7 wells and medium was refreshed to only take into account the biomaterial adherent cells. Twenty-
8 four hours after refresh, the medium was collected while keeping the three samples separate,
9 centrifuged for 10 minutes at 300 x g and stored at -80°C for later cytokine quantification. The
10 macrophages adhering to the biomaterials were lysed in 125 µL PBS/0.1% Triton-X (Sigma-Aldrich)
11 and stored at -20°C before DNA quantification. The remaining CD14⁺ monocytes that were not used
12 for seeding were stored in 20% dimethyl sulfoxide (DMSO)/FCS in liquid nitrogen for flow cytometric
13 analysis.
14
15
16
17
18
19
20
21
22
23
24

25 *Protein adsorption by the biomaterials*

26 To evaluate potential adsorption of the proteins by the materials, the materials were pre-conditioned
27 for 2 hours in non-heat inactivated FCS with agitation, followed by 2 hours incubation in X-VIVO/20%
28 FCS in a tube rotator at 37°C. Next, the materials were transferred to well plates and incubated in X-
29 VIVO/20% FCS for 2 days. After this period, the materials were transferred to new well plates and
30 incubated in medium containing either 1 ng/mL IL-6 (Peprotech), 250 pg/mL CCL18 (R&D Systems),
31 1.25 ng/mL IL 1RA (R&D Systems), 500 pg/mL TNFα or no cytokine. After an additional incubation
32 day, the media were harvested, centrifuged at 300 x g and stored at -80°C until cytokine
33 quantification. The use dosages were based on the detection ranges of the enzyme-linked
34 immunosorbent assays (ELISAs) that were used to determine cytokine concentrations.
35
36
37
38
39
40
41
42

43 *Cytokine quantification*

44 Enzyme-linked immunosorbent assays (ELISAs) were performed according to manufacturer's
45 instructions to quantify the concentrations of CCL18, IL-1ra, IL-6, and TNFα (R&D Systems,
46 Minneapolis, MN, USA) released in the cell culture supernatants. These selected cytokines were
47 chosen based on our previous research in which CCL18, IL-1ra, IL-6, and TNFα were the most
48 discriminative for the different macrophages phenotypes [18, 20]. All measurements fitted within the
49 standard curve, for every material and cytokine different dilutions had to be made of the culture
50 medium, ranging from a 3 to 100 times dilution. C-Reactive Protein (CRP) levels in the plasma were
51 determined using the standard technique at the hospital's laboratory (Dimension Vista® System, Flex
52 reagent cartridge, Siemens Healthcare Diagnostics Products, Germany) and expressed in mg/L. CRP is
53
54
55
56
57
58
59
60
61
62
63
64
65

1 a very common used parameter in all hospitals to detect early systemic inflammation, also prior to
2 surgery, especially in obese patients.
3

4 *DNA quantification*

5
6 Since cell attachment was different between materials we normalized the protein content in the
7 culture media to the amount of DNA on the biomaterial as an indication for the cell number. By
8 normalizing for DNA, we adjust for variation in cell number allowing to determine the production of
9 cytokines per cell, not influenced by the number of cells that adhered to the material. DNA was
10 quantified with a modified CYQUANT® cell proliferation assay (Invitrogen, Carlsbad, California, USA),
11 in order to normalize the cytokine production for the number of cells. In short, the samples were
12 sonicated for 30 minutes at 48 kHz to completely disintegrate the cells. Next, a solution containing
13 250 IU heparin (LEO Pharma, Ballerup, Denmark) and 125 µg RNase (Sigma-Aldrich) were added to
14 the suspensions and incubated for 30 minutes at 37°C. Finally, 0.375 µL CyQUANT GR dye was added
15 to each sample and fluorescence was immediately measured on a SpectraMax Gemini micro plate
16 reader (Molecular Devices, Sunnyvale, USA) at 480 nm excitation and 520 nm emission.
17
18
19
20
21
22
23
24
25
26

27 *Flow cytometric analysis*

28
29 Monocytes were thawed from -80°C and re-suspended at 500,000 cells/mL in FACSFlow solution (BD
30 Biosciences) and stained for 30 minutes at 4°C with antibodies against human CD14 conjugated with
31 APC-H7 and CD16 conjugated with PE (both BD Biosciences), according to the manufacturer's
32 guidelines. Unstained cells were used as negative control. Flow cytometric analysis was performed
33 using the FACSJazz™ (BD Biosciences), and data were analyzed using FlowJo (FlowJo v7.6.4/v10;
34 Ashland, OR, USA). As can be seen in supplementary Figure 1, cells changed in shape and granularity
35 (A and C), and most likely because of cell death, less cells were stained with either of the two
36 antibodies after freezing and thawing. Percentages of monocytes subsets remained however
37 comparable (B and D).
38
39
40
41
42
43
44
45
46

47 *Statistical analysis*

48
49 Statistical analysis was performed with SPSS 21.0 (IBM Inc., Chicago, USA). Basic characteristics are
50 presented as mean ± standard deviation (SD) and data related to cytokines are presented as mean
51 and standard of mean (S.E.M.). An independent T-test was used for the age and BMI due to normal
52 distribution of these parameters. Mann Whitney U analysis was used for statin use. To compare
53 cytokine levels between macrophages obtained from lean and obese subjects and compare cytokine
54 levels between the different materials within the obese and control group, a Kruskal-Wallis analysis
55 followed by a post-hoc Mann Whitney U analysis was performed. An M1/M2-index per material was
56
57
58
59
60
61
62
63
64
65

1
2
3
4
5
6
7
8
9
10
11
12
13
14
15
16
17
18
19
20
21
22
23
24
25
26
27
28
29
30
31
32
33
34
35
36
37
38
39
40
41
42
43
44
45
46
47
48
49
50
51
52
53
54
55
56
57
58
59
60
61
62
63
64
65

calculated based on the cytokine production of pro-inflammatory (M1) cytokines IL-6 and TNF α and anti-inflammatory (M2) cytokines CCL18 and IL-1ra. The mean of the relative M1 cytokine levels per patient to the overall M1 cytokine levels of all patients, was divided over the mean of the relative M2 cytokine levels per patient to the overall M2 cytokine production of all patients, as shown in the following formula.

$$M1/M2 - index = \frac{\frac{(IL-6_{per\ patient} + TNF\alpha_{per\ patient})}{(IL-6_{all\ patients} + TNF\alpha_{all\ patients})}}{\frac{(CCL18_{per\ patient} + IL1ra_{per\ patient})}{(CCL18_{all\ patients} + IL1ra_{all\ patients})}}$$

To determine correlations, a non-parametric Spearman test was performed. All reported p -values were two-sided; a p -value < 0.05 was considered to indicate statistical significance. Since the analyses were exploratory and the groups sizes small, no adjustment for multiple testing was performed.

Results

As a result of our inclusion criteria, BMI was significantly different between the included lean and obese subjects. Age, gender and the use of statins were not significantly different between the two groups (Table 1).

Obesity influenced cytokine production by macrophages on biomaterials

The production of IL-6 and TNF α as indicators for a pro-inflammatory response and CCL18 and IL-1ra as indicators for an anti-inflammatory response were measured. Macrophages from obese patients produced significantly more IL-6 than macrophages from lean subjects when cultured on PET (144.0 pg IL-6/ng DNA vs 102.0 pg IL-6/ng DNA, $p = 0.022$). No significant differences were seen for the other materials regarding IL-6 production (Table 2 and Supplementary Figure 2A). TNF α production was not significantly different between the groups for any of the tested materials (Table 2 and Supplementary Figure 2B). CCL18 production was significantly higher for all materials in the lean group than in the obese group (Table 2 and Supplementary Figure 2C). IL-1ra production was higher in the lean group than in the obese group when cultured on PLA (34.6 pg IL-1ra/ng DNA vs 15.5 pg IL-1ra/ng DNA, $p = 0.026$) but not on the other materials (Table 2 and Supplementary Figure 2D).

No IL-6, TNF α , CCL18, and IL-1ra were detectable in medium with serum alone and thus also no difference was seen after incubation of the material in medium with serum but without adherent cells. When the proteins of interest were spiked in the culture medium, adsorption of these proteins was seen to the materials, with the most adsorption of all four proteins to PP, and PLA in the case of IL-6 (Figure 2).

The DNA concentration as an indication for the number of attached macrophages to the biomaterials, was not significantly different between the lean and obese patients in all biomaterials (Supplementary data Figure 3A). Absolute protein production per individual is shown in supplementary Figure 2B-D. When comparing the effect of the materials on macrophages within the obese and lean group and per material, PP induced higher levels of IL-6, TNF α , and IL-1ra than the other materials, especially when compared to mPET. Less clear differences between materials were seen for CCL18 production (Figure 3).

To compare overall response of the different materials in lean and obese subjects, an M1/M2 index was calculated for each condition. The M1/M2 index was significantly higher of the obese group than for the lean subjects for PP ($p < 0.001$), PET ($p = 0.001$), and mPET ($p = 0.003$) but not for PLA. No differences regarding the M1/M2 index were seen between materials for the lean subjects. In obese patients, PLA resulted in the lowest M1/M2 index, and mPET the highest (Figure 4).

Serum CRP and BMI correlate with cytokine production by macrophages

1 The average C-reactive protein level in lean subjects was 1.3 ± 1.8 mg/L versus 15.6 ± 17.1
2 mg/L in obese patients, $p = 0.004$ (Supplementary Figure 4). CRP concentration positively correlated
3 with BMI (Table 3). A positive correlation was also seen between CRP and IL-6 production in response
4 to the material for all materials, but only significant for PP and mPET. A significant negative
5 correlation was seen between serum CRP concentration and CCL18 production by macrophages in
6 response to PP, PLA, and mPET and between BMI and CCL18 production by macrophages in response
7 to PP, PLA, and mPET. CRP also negatively correlated with IL-1ra production in response to PP, PLA,
8 and mPET. CRP or BMI did not correlate with TNF α production (Table 3).
9
10
11
12
13
14
15
16
17

Differences in monocyte subsets between lean and obese patients

18 The percentages of classical monocytes (CD14⁺⁺CD16⁻), intermediate monocytes
19 (CD14⁺⁺CD16⁺), or non-classical monocytes (CD14⁺CD16⁺⁺) in peripheral blood were not statistically
20 significantly different between lean and obese subjects (Table 4). However, the percentages of
21 intermediate monocytes correlated positively with IL-6 for PLA and negatively with the CCL18 protein
22 production for PET and mPET, and with IL-1ra for mPET. The percentages of non-classical monocytes
23 correlated negatively with CCL18 production when macrophages were cultured on mPET. No
24 statistically significant correlations were seen between percentages of monocyte subsets and TNF α
25 production by the macrophages cultured on any of the biomaterials (Table 5A). For PP and mPET the
26 M1/M2 index significantly correlated with the percentage of classical monocytes. Intermediate
27 monocytes significantly correlated negative with the M1/M2 index for mPET. Supplementary Figure 1
28 shows that the percentages of monocyte subsets are unaffected before and after thawing.
29
30
31
32
33
34
35
36
37
38
39
40
41
42
43
44
45
46
47
48
49
50
51
52
53
54
55
56
57
58
59
60
61
62
63
64
65

Discussion

1
2 The use of biomaterials has become common in regenerative medicine. The reaction of primary
3 human macrophages to biomaterials has been shown *in vitro* to be biomaterial specific, even when
4 an inflammatory situation is simulated [18, 19]. However, the person-dependent foreign body
5 response has not been taken into account in these models. In the current explorative study, we
6 investigated the effect of obesity, a growing problem in the Western world, on the response of
7 macrophages to biomaterials and found that on average macrophages from obese patients respond
8 more pro-inflammatory to biomaterials as indicated by higher IL-6 and lower CCL18 and IL-1ra
9 production than in macrophages from lean persons that were cultured on the same materials. In
10 addition, we found that BMI, serum CRP and percentages of monocyte subsets in the peripheral
11 blood correlate with the response of the macrophages to the biomaterials *in vitro*, and that these
12 correlations were biomaterial specific. In addition, we showed that macrophages derived from
13 monocytes from obese patients still respond pro-inflammatory, even when they are not in an obese
14 environment anymore. To our knowledge, this is the first study that investigated the differences in
15 macrophage response to biomaterials between lean and obese patients.
16
17
18
19
20
21
22
23
24
25
26

27
28 Obese patients included in this trial had no insulin resistance and therefore, according to the
29 WHO criteria, no metabolic syndrome[21]. Because of the strict inclusion and exclusion criteria, such
30 as no smoking, no implants, and the absence of diabetes mellitus we assume that the different
31 responses to the biomaterials between lean and obese patients is the result of obesity only and not
32 because of a difference in the presence of diabetes or previous operations in which biomaterials
33 were used. However, certain risk factors that are unknown at the moment might have influenced our
34 measurements and have resulted in the large variation that is sometimes observed in the cytokine
35 measurements. Although these patients do not have a metabolic syndrome, 50% of them had a CRP
36 level >10 mg/L, indicating systemic low-grade inflammation. CRP levels in the serum correlated
37 positively with IL-6 production by the macrophages on PP and mPET and negatively with CCL18 and
38 IL-1ra levels on PP, PLA and mPET *in vitro*, showing that CRP has a pro-inflammatory effect on
39 macrophages. This was supported by an *in vitro* study, where it was shown that CRP polarizes human
40 macrophages to an M1 phenotype[22]. A shift from classic monocytes in the peripheral blood to
41 intermediate or non-classic monocytes has been seen before as a result of obesity [11, 23, 24], of
42 which the latter two subsets are regarded as the pro-inflammatory subsets with increasing CD16
43 positivity[11, 23, 24]. We did not observe a statistically significant shift when comparing the presence
44 of these subsets between lean persons and obese patients. This can be due to the fact that the
45 inclusion criteria were strict and only obese patients without a metabolic syndrome were included. In
46 addition, the numbers of patients from who we were able to obtain a sufficient number of
47
48
49
50
51
52
53
54
55
56
57
58
59
60
61
62
63
64
65

1
2
3
4
5
6
7
8
9
10
11
12
13
14
15
16
17
18
19
20
21
22
23
24
25
26
27
28
29
30
31
32
33
34
35
36
37
38
39
40
41
42
43
44
45
46
47
48
49
50
51
52
53
54
55
56
57
58
59
60
61
62
63
64
65

monocytes to perform additional flow cytometric analysis next to culture with biomaterials were low and thus resulting in a low power. Interestingly however, when comparing percentages of monocyte subsets in the peripheral blood with the cytokine production of monocyte-derived macrophages on biomaterials *in vitro*, CCL18 and IL-1ra production by macrophages on mPET and PET *in vitro* were correlated with the percentages of the different monocyte subsets in the peripheral blood. The percentages of classical monocytes correlated positively with CCL18 and IL-1ra levels produced by macrophages in culture, the percentages of the more pro-inflammatory intermediate and non-classical subsets correlated negatively with CCL18 production in culture. CCL18 is a chemokine that is predominantly made by anti-inflammatory macrophages [18, 25], indicating that the initial presence of classical monocytes is associated with the differentiation towards anti-inflammatory macrophages. As could be seen from the individual levels of IL-6, CCL18 and IL-1ra, not all obese patients had macrophages producing high levels of IL-6 and low levels of CCL18 or IL-1ra. No corrections for baseline production of the cytokines of interest were made however, because in our opinion, this best represents the *in vivo* situation. Even though no corrections were made, differences were still seen between the effects of different biomaterials on cells of the same patient. This underlines potential patient specific responses even when obesity already changed the metabolic status of the patient and these responses can be explained by serum CRP levels and percentages of monocyte subsets in the blood. The production of TNF α in our culture system was not influenced by obesity, this might be explained by the short time detection range of TNF α [26]. Based on our data, it seems that PLA followed by PP and PET, are more preferable for obese patients and that all tested materials can be more or less equivalently be used for lean for lean patients, assuming that a pre-dominant anti-inflammatory reaction is preferred. Although the choice of material may be better guided by the inflammatory reaction at the individual patient level rather than at the comorbidity category such as obesity. As shown in previous clinical studies, no enormous undesirable behavior of multifilament PET mesh (e.g. Parietex™ Composite mesh) for hernia repair in obese patients has been reported till now, therefore the clinical impact might be moderate[27, 28]. Nevertheless the patients outcome can always be improved with careful and personalized selection of meshes.

The polymers used in this study are commonly used for materials for soft tissue repair. The host-response to materials is not only material dependent but also the porosity, topography, and surface of the material influence the biocompatibility[3, 29-31]. The many different properties of the material influence the polarization of the macrophages[3]. In the current study, the materials were braided in the same way, but because of different diameters of the individual fibers between the materials, the topography was not exactly the same. Therefore the length of the knitted yarn was adjusted to the diameter to achieve the best possible comparable material appearance. Interestingly,

1 PET and mPET resulted in different M1/M2 indexes, especially when macrophages of obese patients
2 were cultured on the materials. This demonstrates that indeed not only the polymer but also the
3 architecture of the material is important for elicited responses. In this study, PP did not elicit an anti-
4 inflammatory effect based on the cytokines measured. This underlines again that not only the
5 polymer itself is important for the reaction the material elicits, but also the architecture of the
6 material since in our earlier studies we have used meshes instead of yarns[18, 19]. Braided yarns
7 were chosen in the current study to make the macrophage-biomaterial contact more optimal
8 necessary for the low numbers of patient cells available for this study. After spiking of IL-6, TNF α ,
9 CCL18, and IL-1ra in the culture medium, adsorption was seen, and varying between the materials.
10 Since PP had the most adsorption of our proteins of interest, the values for PP (and for PLA in the
11 case of IL6) are most likely an underestimation. However, most of the associations and comparisons
12 are made within a biomaterial and a cytokine, not comparing two different cytokines or materials
13 with each other. These comparisons and associations are therefore unaffected in our opinion by the
14 adsorption of the protein of interest. However, the difference in adsorption to each material, and
15 especially the high adsorption to PP, might overshadow the differences in reactions elicited by the
16 materials.
17
18
19
20
21
22
23
24
25
26
27

28
29 After implantation, the biomaterial eventually will be in contact with macrophages, but it will
30 also be surrounded by non-adherent macrophages and extracellular matrix. We however specifically
31 chose not to include non-adherent macrophages in our experimental set-up. The biomaterials were
32 cultured plates made of tissue culture polystyrene (TCPS), also a polymer. By transferring the
33 materials with their adherent cells to new wells, the medium contained mainly the cytokines from
34 the macrophages adhering to the yarns. TCPS most likely will have a totally different effect than the
35 extracellular matrix that normally surrounds an implanted biomaterial. In fact, we have seen that
36 collagen indeed exerts different effect on macrophages than polymers [18, 19]. Therefore, we
37 believed that including cytokine production from macrophages adhering to the TCPS would make the
38 system even more artificial.
39
40
41
42
43
44
45
46

47 The proteins IL-6, TNF α , CCL18, and IL-1ra were selected as indicators of pro-inflammatory
48 and anti-inflammatory responses. We are aware that these cytokines do not represent the full
49 spectrum of mediators produced during the foreign body response. However previously, we have
50 seen that these mediators are most discriminative between pro-inflammatory and anti-inflammatory
51 macrophages[18, 25]. Studies to determine the actual *in vivo* response to the biomaterial and
52 correlating this with the parameters in the peripheral blood are necessary to draw more firm
53 conclusions about the predictive value of monocyte subset percentages and serum CRP levels for the
54 reaction biomaterials elicit in a certain patient.
55
56
57
58
59
60
61
62
63
64
65

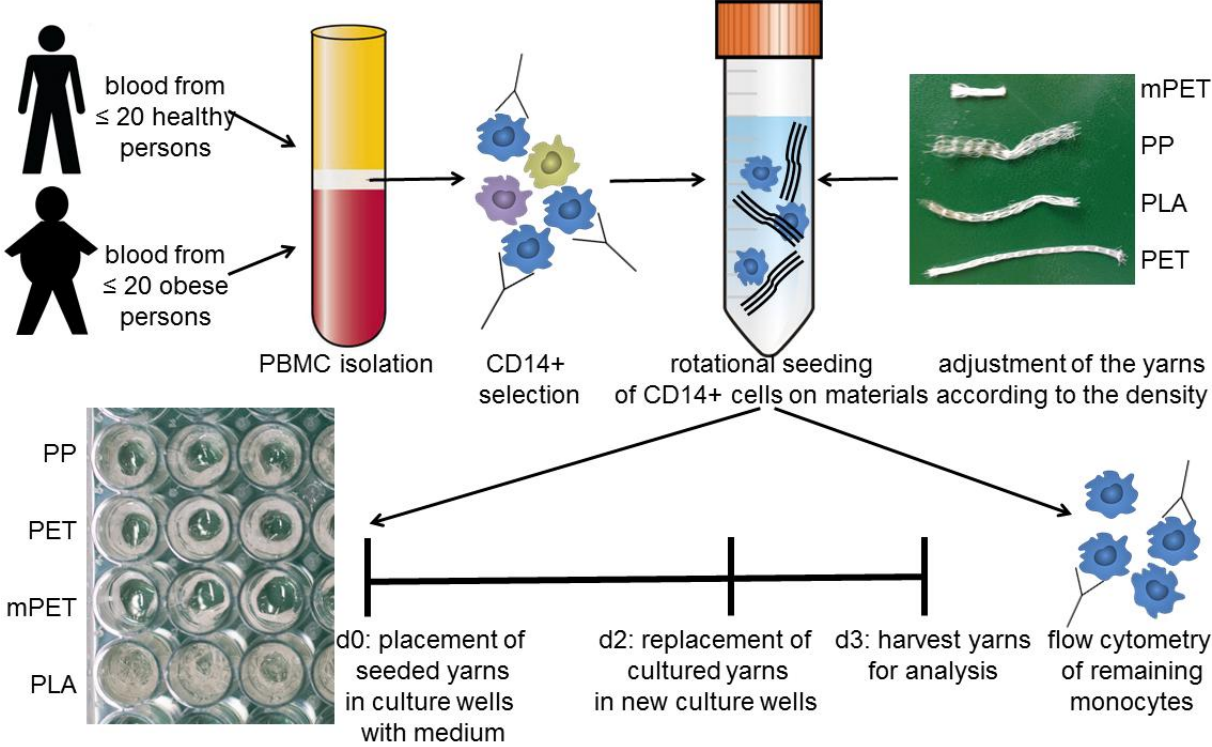
1
2 **Conclusion**
3

4 Monocyte-derived macrophages of obese patients respond more pro-inflammatory and less anti-
5 inflammatory to biomaterials than macrophages from lean subjects and this response depends on
6 the type of biomaterial. This variation in cytokine production by the macrophages was associated by
7 the percentages of monocyte subsets in the peripheral blood, serum CRP levels, or BMI of the
8 patient. The results of this *in vitro* study offer possibilities and could stimulate future research
9 towards personalized medicine, eventually leading to a model that can be used to test biomaterials
10 for tissue repair and tissue engineering using patient's own cells prior to implantation of a
11 biomaterial. In addition, our results offer the prospect that monocyte subsets in the blood or serum
12 CRP might be measured prior to surgery to predict which biomaterial might be suitable for each
13 patient. Studies indeed examining the clinical outcome after implantation of a biomaterial in relation
14 to serum CRP, BMI, and monocyte subsets are however needed to confirm this.
15
16
17
18
19
20
21
22
23
24
25

26 **Acknowledgements**
27

28 We would like to thank all volunteers and patients who participated in this study. This study is
29 supported by Medtronic-Sofradim, but they were not involved in the design, conduct or data analysis
30 of the study. Yvonne Bastiaansen-Jenniskens was supported by a Veni grant from NOW/STW. The
31 authors declare no conflict of interest.
32
33
34
35
36
37
38
39
40
41
42
43
44
45
46
47
48
49
50
51
52
53
54
55
56
57
58
59
60
61
62
63
64
65

Figure 1 Experimental flow of our study, including pictures of the yarns and how the yarns were placed in the culture wells. CD14 = cluster of differentiation 14, PP = polypropylene, PLA = polylactic acid, PET = monofilament polyethylene terephthalate, and mPET = multifilament polyethylene terephthalate.



1
2
3
4
5
6
7
8
9
10
11
12
13
14
15
16
17
18
19
20
21
22
23
24
25
26
27
28
29
30
31
32
33
34
35
36
37
38
39
40
41
42
43
44
45
46
47
48
49
50
51
52
53
54
55
56
57
58
59
60
61
62
63
64
65

Table 1. Patient characteristics lean group vs obese patients.

	lean (n=20)	obese (n=20)	p-value
BMI (kg/m ²)	22.9 ± 2.6	43.8 ± 6.5	<0.001
gender (male/ female)	2/18	2/18	1.0
age (years)	41.8 ± 13.1	41.3 ± 13.5	0.916
use of statins	0/20	2/20	0.154

Values are means (SD), p-value was estimated by using independent sample T-test

Table 2. The average production of IL-6, TNF α , CCL18, and IL-1ra corrected for DNA by macrophages on the different materials.

cytokine production by macrophages (pg protein/ng DNA)				
cytokine	material	lean (mean ± SD)	obese (mean ± SD)	p value
IL-6	PP	116.6 ± 97.2	172.4 ± 114.1	0.106
	PLA	109.2 ± 67.1	157.4 ± 146.8	0.247
	PET	102.0 ± 73.9	144.0 ± 58.4	0.022
	mPET	39.2 ± 23.9	68.7 ± 64.0	0.140
TNF α	PP	7.9 ± 8.3	5.9 ± 4.9	0.300
	PLA	5.0 ± 4.4	3.3 ± 3.1	0.119
	PET	3.6 ± 3.8	3.3 ± 1.5	0.417
	mPET	1.0 ± 0.9	0.7 ± 0.5	0.421
CCL18	PP	0.8 ± 0.7	0.2 ± 0.3	< 0.001
	PLA	1.4 ± 0.9	0.4 ± 0.4	0.002
	PET	1.6 ± 1.3	0.5 ± 0.6	0.002
	mPET	0.7 ± 0.6	0.3 ± 0.3	0.007
IL-1ra	PP	49.4 ± 52.2	24.4 ± 16.8	0.128
	PLA	34.6 ± 28.5	15.5 ± 9.0	0.026
	PET	32.3 ± 22.6	20.2 ± 13.6	0.071
	mPET	18.0 ± 18.4	10.0 ± 12.3	0.057

Bold values denote statistical significance

Figure 2: Measurements of IL-6 (A), TNF α (B), CCL18 (C), and IL-1ra (D) in the culture medium with and without the incubation of the biomaterials and with and without spiking of the protein of interest. White bar indicates measurements in medium with or without incubation of the materials. Black bars indicate measurements in medium alone or after incubation with the material in the presence of the spiked proteins. Bars represent n= 6 + sd for every bar.

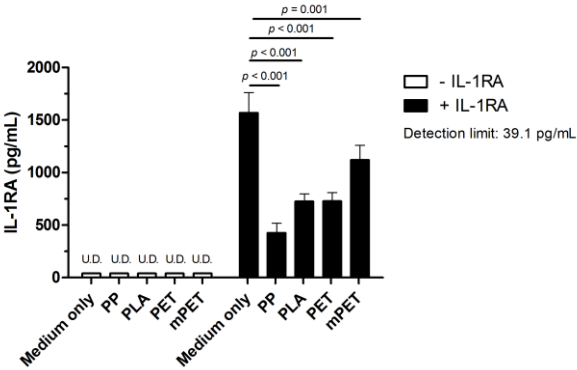
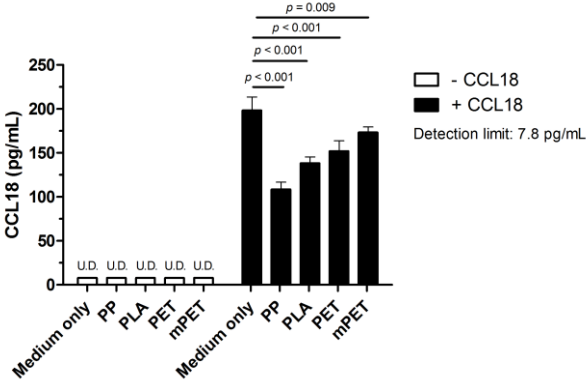
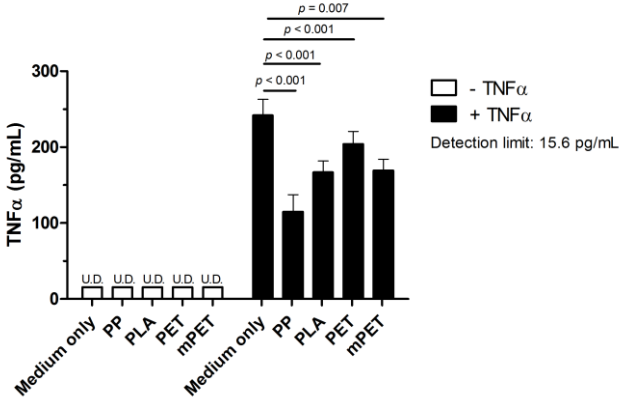
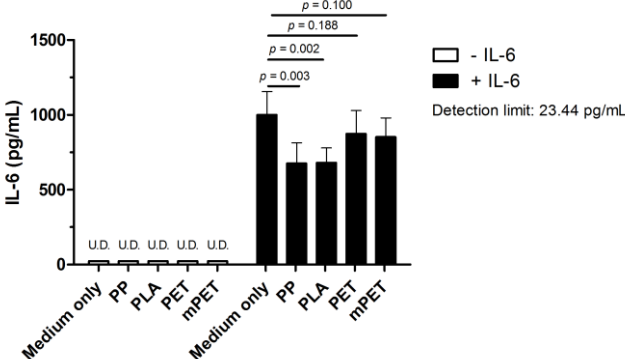
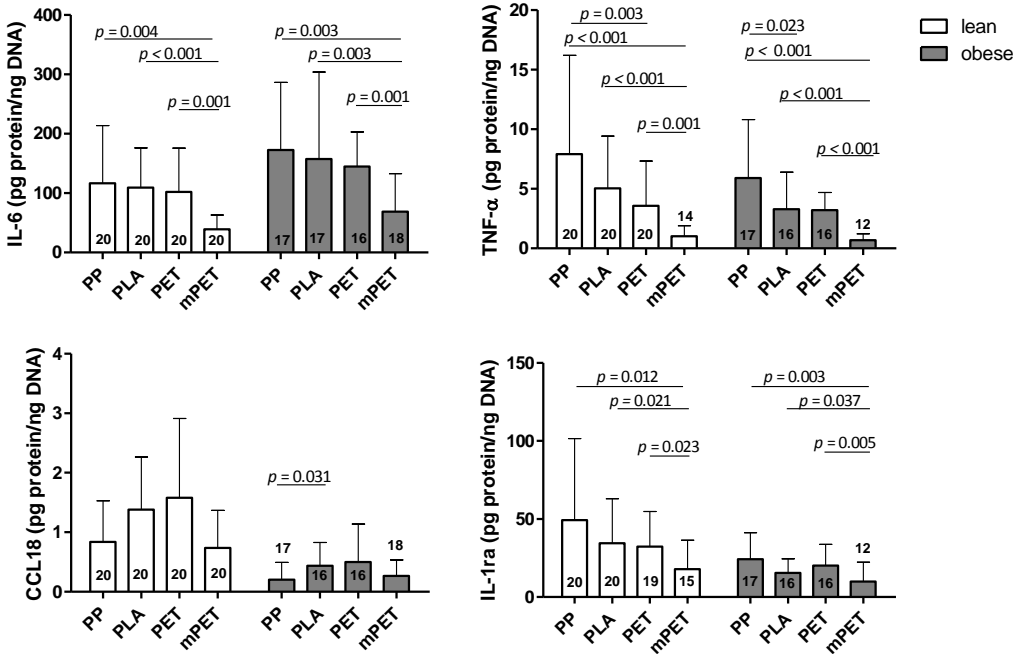


Figure 3 Cytokine production corrected for DNA compared per material, in lean subjects or in obese subjects. Number of patients per cytokine and per material are indicated in the bars or just above the error bar.



1
2
3
4
5
6
7
8
9
10
11
12
13
14
15
16
17
18
19
20
21
22
23
24
25
26
27
28
29
30
31
32
33
34
35
36
37
38
39
40
41
42
43
44
45
46
47
48
49
50
51
52
53
54
55
56
57
58
59
60
61
62
63
64
65

Figure 4: M1/M2 index between materials. Bars represent the mean, error bars the SD, *p*-values indicate significant differences. A base 2-log scale is used for the Y-axis. PP = polypropylene, PLA = polylactic acid, PET = monofilament polyethylene terephthalate, and mPET = multifilament polyethylene terephthalate. The number of patients included per material, per group are indicated in the bars.

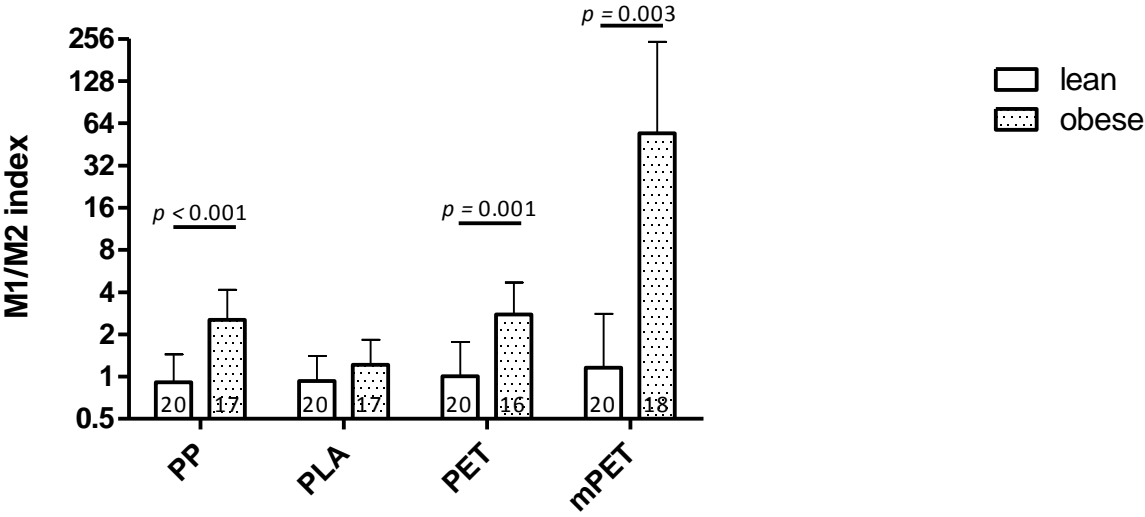


Table 3 Correlations between CRP concentration in peripheral blood, BMI of all subjects, and cytokine production by the macrophages.

material		CRP		BMI	
		r	p-value	r	p-value
CRP	-	-	-	0.64	< 0.001
IL-6	PP	0.37	0.046	0.27	0.111
	PLA	0.20	0.310	0.22	0.198
	PET	0.40	0.035	0.27	0.146
	mPET	0.53	0.003	0.22	0.186
CCL18	PP	-0.45	0.012	-0.44	0.006
	PLA	-0.56	0.002	-0.37	0.028
	PET	-0.36	0.063	-0.39	0.017
	mPET	-0.54	0.002	-0.30	0.068
IL-1ra	PP	-0.36	0.05	-0.15	0.391
	PLA	-0.45	0.015	-0.20	0.245
	PET	-0.35	0.075	-0.22	0.211
	mPET	-0.54	0.013	-0.22	0.267
TNF α	PP	-0.17	0.382	-0.18	0.295
	PLA	-0.15	0.438	-0.24	0.16
	PET	0.14	0.492	0.02	0.903
	mPET	-0.17	0.476	-0.30	0.143

Bold values denote statistically significant *p*-values

Table 4 Percentages of peripheral blood monocytes subsets in lean (n = 9) and obese (n = 8) subjects.

Values are mean +/- sd.

% of monocyte	lean	obese	p-value
classical (CD14 ⁺⁺ CD16 ⁻)	90.9 ± 5.3	77.4 ± 22.0	0.290
intermediate (CD14 ⁺⁺ CD16 ⁺)	2.2 ± 3.4	7.9 ± 13.4	0.336
non-classical (CD14 ⁺ CD16 ⁺⁺)	4.0 ± 3.8	12.9 ± 13.7	0.211

Table 5A Spearman correlation between percentages of CD14⁺⁺CD16⁻ (classical), CD14⁺⁺CD16⁺ (intermediate), or CD14⁺CD16⁺⁺ (non-classical) monocyte subsets and production of cytokines by cultured macrophages on the four different materials. The Spearman correlation coefficients (r) define the relationship between monocyte subsets from peripheral blood and the production of IL-6, CCL18, IL-1ra, and TNFα) by macrophages cultured on PP, PLA, PET, and mPET. Table 5B shows the correlation between the percentages of monocyte subsets with the M1/M2 index for the four different materials. PP = polypropylene, PLA = polylactic acid, PET = monofilament polyethylene terephthalate, and mPET = multifilament polyethylene terephthalate.

A		CD14 ⁺⁺ CD16 ⁻		CD14 ⁺⁺ CD16 ⁺		CD14 ⁺ CD16 ⁺⁺	
		r	p-value	r	p-value	r	p-value
CRP	-	-0.42	0.120	0.35	0.198	0.35	0.203
BMI		-0.16	0.535	0.12	0.636	0.31	0.231
IL-6	PP	-0.17	0.541	0.27	0.334	0.26	0.355
	PLA	-0.43	0.086	0.53	0.028	0.41	0.103
	PET	-0.54	0.038	0.51	0.052	0.47	0.079
	mPET	-0.36	0.158	0.38	0.133	0.26	0.323
CCL18	PP	0.28	0.321	-0.13	0.639	-0.23	0.405
	PLA	0.16	0.549	-0.32	0.107	-0.18	0.370
	PET	0.21	0.451	-0.40	0.045	-0.36	0.073
	mPET	0.24	0.353	-0.50	0.007	-0.39	0.039
IL-1ra	PP	0.12	0.676	-0.43	0.108	0.18	0.516
	PLA	0.16	0.529	-0.29	0.252	0.04	0.889
	PET	0.28	0.334	-0.65	0.011	-0.03	0.911
	mPET	0.13	0.658	-0.53	0.052	0.16	0.594
TNFα	PP	-0.37	0.173	0.17	0.550	0.42	0.121
	PLA	-0.35	0.171	0.37	0.141	0.21	0.428
	PET	-0.46	0.084	0.30	0.283	0.30	0.296
	mPET	-0.41	0.167	0.01	0.986	0.42	0.152

B Spearman correlation between percentages of monocyte subsets and M1/M2 index

		CD14 ⁺⁺ CD16 ⁻		CD14 ⁺⁺ CD16 ⁺		CD14 ⁺ CD16 ⁺⁺	
		r	p-value	R	p-value	r	p-value
M1/M2	PP	-0.59	0.020	0.36	0.182	0.48	0.069
	PLA	-0.40	0.112	0.37	0.144	0.35	0.174
	PET	-0.45	0.092	0.26	0.341	0.27	0.328
	mPET	-0.51	0.038	0.58	0.016	0.41	0.098

Bold values denote statistically significant *p*-values

References

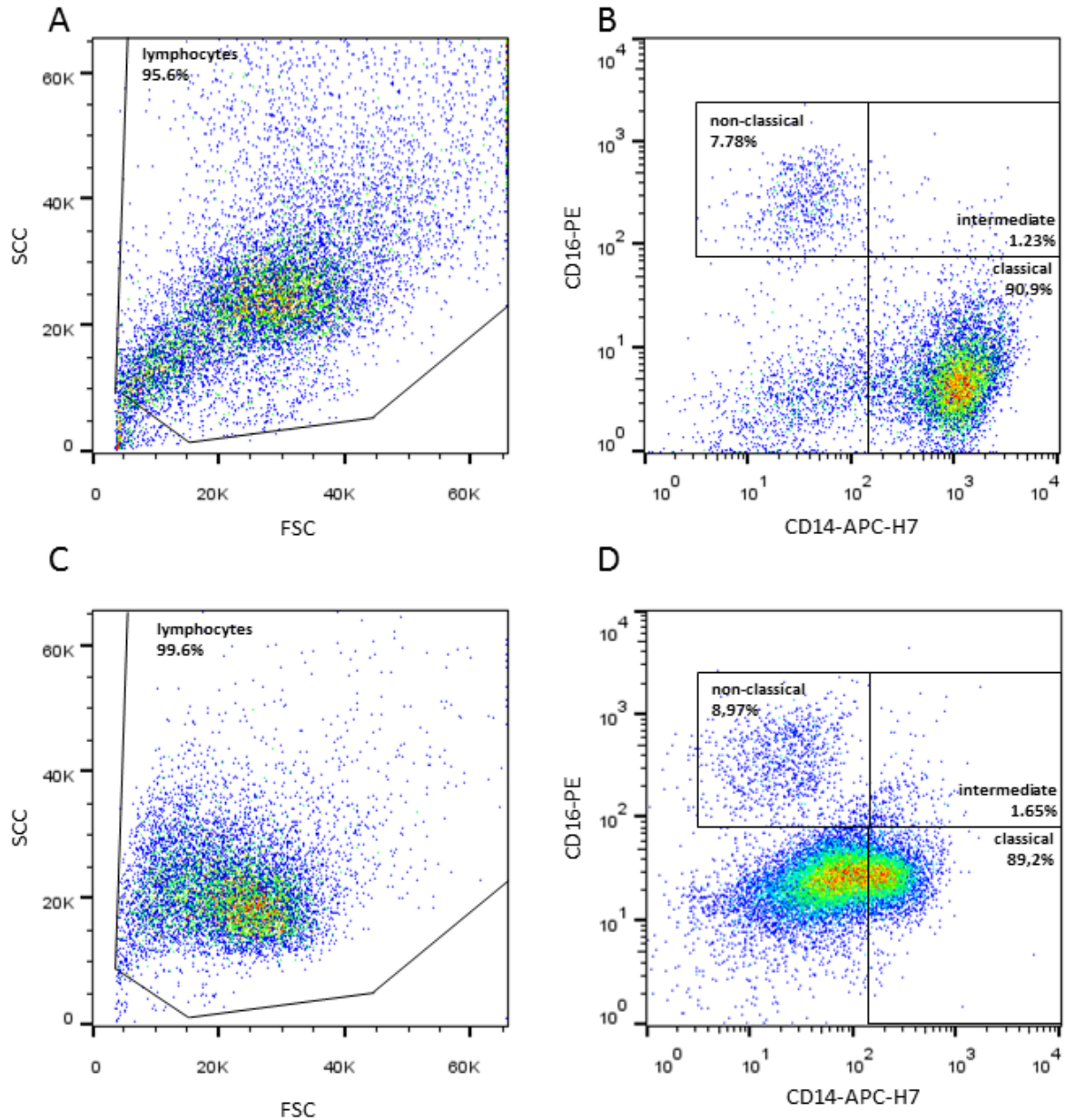
1. Binyamin, G., B.M. Shafi, and C.M. Mery, *Biomaterials: a primer for surgeons*. Semin Pediatr Surg, 2006. **15**(4): p. 276-83.
2. Anderson, J.M., A. Rodriguez, and D.T. Chang, *Foreign body reaction to biomaterials*. Semin Immunol, 2008. **20**(2): p. 86-100.
3. Sridharan, R., et al., *Biomaterial based modulation of macrophage polarization: a review and suggested design principles*. Materials Today, 2015. **18**(6): p. 313-325.
4. Pierpont, Y.N., et al., *Obesity and surgical wound healing: a current review*. ISRN Obes, 2014. **2014**: p. 638936.
5. Rosemar, A., et al., *Effect of body mass index on groin hernia surgery*. Ann Surg, 2010. **252**(2): p. 397-401.
6. Komen, N., et al., *After-hours colorectal surgery: a risk factor for anastomotic leakage*. Int J Colorectal Dis, 2009. **24**(7): p. 789-95.
7. Sauerland, S., et al., *Obesity is a risk factor for recurrence after incisional hernia repair*. Hernia, 2004. **8**(1): p. 42-6.
8. Langer, S. and J. Christiansen, *Long-term results after incisional hernia repair*. Acta Chir Scand, 1985. **151**(3): p. 217-9.
9. Lumeng, C.N., J.L. Bodzin, and A.R. Saltiel, *Obesity induces a phenotypic switch in adipose tissue macrophage polarization*. J Clin Invest, 2007. **117**(1): p. 175-84.
10. Lumeng, C.N., et al., *Phenotypic switching of adipose tissue macrophages with obesity is generated by spatiotemporal differences in macrophage subtypes*. Diabetes, 2008. **57**(12): p. 3239-46.
11. Considine, R.V., *Activated monocytes: yet another link between systemic inflammation and obesity*. J Clin Endocrinol Metab, 2014. **99**(7): p. 2347-9.
12. Xu, H., et al., *Chronic inflammation in fat plays a crucial role in the development of obesity-related insulin resistance*. J Clin Invest, 2003. **112**(12): p. 1821-30.
13. Kammoun, H.L., M.J. Kraakman, and M.A. Febbraio, *Adipose tissue inflammation in glucose metabolism*. Rev Endocr Metab Disord, 2014. **15**(1): p. 31-44.
14. Ziegler-Heitbrock, L., *Monocyte subsets in man and other species*. Cell Immunol, 2014. **289**(1-2): p. 135-9.
15. Martinez, F.O., *The transcriptome of human monocyte subsets begins to emerge*. J Biol, 2009. **8**(11): p. 99.
16. Rogacev, K.S., et al., *Monocyte heterogeneity in obesity and subclinical atherosclerosis*. Eur Heart J, 2010. **31**(3): p. 369-76.
17. Poitou, C., et al., *CD14^{dim}CD16⁺ and CD14⁺CD16⁺ monocytes in obesity and during weight loss: relationships with fat mass and subclinical atherosclerosis*. Arterioscler Thromb Vasc Biol, 2011. **31**(10): p. 2322-30.
18. Grotenhuis, N., et al., *A culture model to analyze the acute biomaterial-dependent reaction of human primary macrophages*. Biochem Biophys Res Commun, 2013. **433**(1): p. 115-20.
19. Grotenhuis, N., et al., *In vitro model to study the biomaterial-dependent reaction of macrophages in an inflammatory environment*. Br J Surg, 2014. **101**(8): p. 983-92.
20. Utomo, L., et al., *Guiding synovial inflammation by macrophage phenotype modulation: an in vitro study towards a therapy for osteoarthritis*. Osteoarthritis Cartilage, 2016.
21. Grundy, S.M., et al., *Definition of metabolic syndrome: Report of the National Heart, Lung, and Blood Institute/American Heart Association conference on scientific issues related to definition*. Circulation, 2004. **109**(3): p. 433-8.
22. Devaraj, S. and I. Jialal, *C-reactive protein polarizes human macrophages to an M1 phenotype and inhibits transformation to the M2 phenotype*. Arterioscler Thromb Vasc Biol, 2011. **31**(6): p. 1397-402.
23. Krinninger, P., et al., *Peripheral monocytes of obese women display increased chemokine receptor expression and migration capacity*. J Clin Endocrinol Metab, 2014. **99**(7): p. 2500-9.

24. Cottam, D.R., et al., *Effect of surgically-induced weight loss on leukocyte indicators of chronic inflammation in morbid obesity*. *Obes Surg*, 2002. **12**(3): p. 335-42.
25. Lopa, S., et al., *Arthritic and non-arthritic synovial fluids modulate IL10 and IL1RA gene expression in differentially activated primary human monocytes*. *Osteoarthritis Cartilage*, 2015. **23**(11): p. 1853-7.
26. Gratchev, A., et al., *Mphi1 and Mphi2 can be re-polarized by Th2 or Th1 cytokines, respectively, and respond to exogenous danger signals*. *Immunobiology*, 2006. **211**(6-8): p. 473-86.
27. Ching, S.S., et al., *Comparison of early outcomes for laparoscopic ventral hernia repair between nonobese and morbidly obese patient populations*. *Surg Endosc*, 2008. **22**(10): p. 2244-50.
28. Briennon, X., et al., *Surgical treatment of large incisional hernias by intraperitoneal insertion of Parietex(R) composite mesh with an associated aponeurotic graft (280 cases)*. *J Visc Surg*, 2011. **148**(1): p. 54-8.
29. Harvey, A.G., E.W. Hill, and A. Bayat, *Designing implant surface topography for improved biocompatibility*. *Expert Rev Med Devices*, 2013. **10**(2): p. 257-67.
30. Roach, P., et al., *Modern biomaterials: a review - bulk properties and implications of surface modifications*. *J Mater Sci Mater Med*, 2007. **18**(7): p. 1263-77.
31. Rosengren, A. and L.M. Bjursten, *Pore size in implanted polypropylene filters is critical for tissue organization*. *J Biomed Mater Res A*, 2003. **67**(3): p. 918-26.

1
2
3
4
5
6
7
8
9
10
11
12
13
14
15
16
17
18
19
20
21
22
23
24
25
26
27
28
29
30
31
32
33
34
35
36
37
38
39
40
41
42
43
44
45
46
47
48
49
50
51
52
53
54
55
56
57
58
59
60
61
62
63
64
65

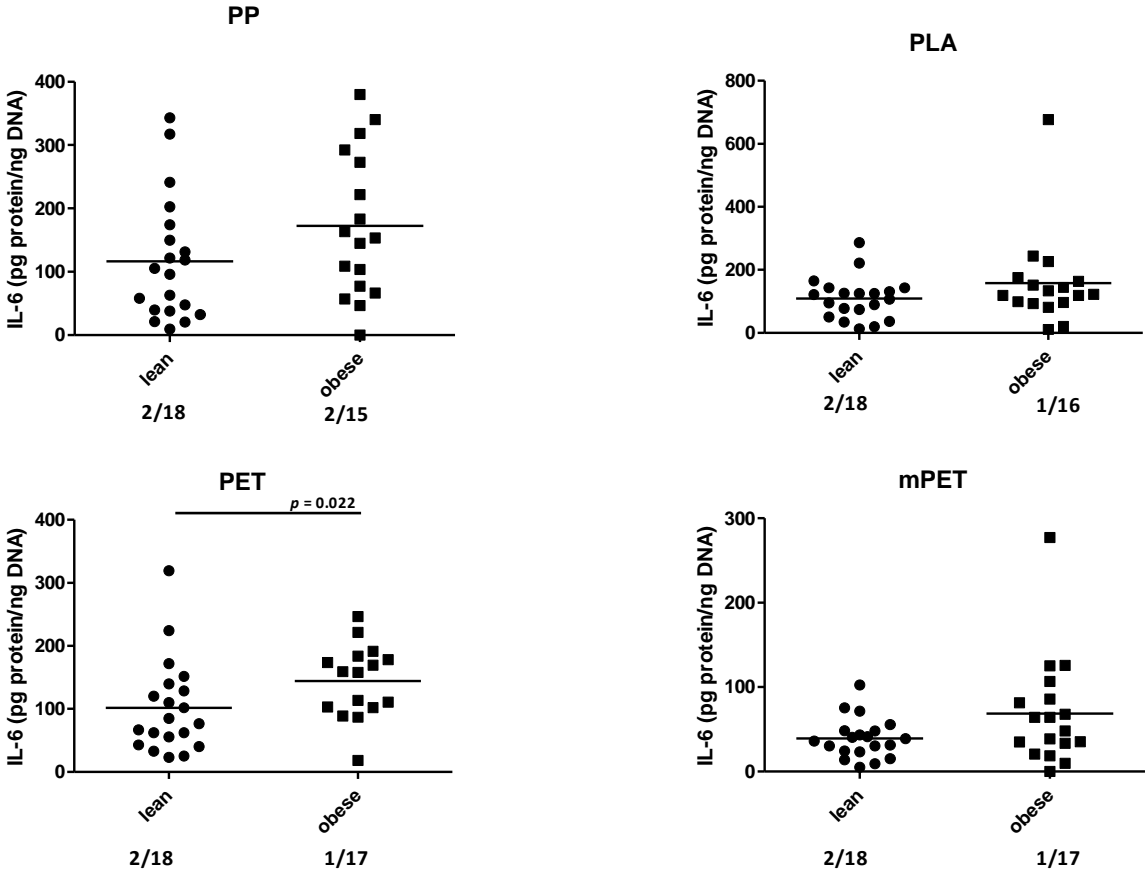
Supplementary data

Supplementary figure 1; flow cytometric analysis of fresh (A, B), and frozen monocytes (C, D). Forward scatter (FSC) and sideward scatter (SSC) show size and granularity of the cells (A, C) and monocyte subsets were determined based on the presence of cluster of differentiation 14 (CD14) and CD16 (B, D).



Supplementary Figure 2A: IL-6, **B:** TNF α , **C** CCL18, **D** IL-1ra production by macrophages seeded on different materials corrected for DNA, lean vs. obese groups shown per material. Every dot represents a single donor. The line indicates the mean, *p*-values indicate a statistically significant difference. Bars represent the mean, whiskers the SD. Ratios underneath the graphs indicate the male/female ratio per measurement and per material. PP = polypropylene, PLA = polylactic acid, PET = monofilament polyethylene terephthalate, and mPET = multifilament polyethylene terephthalate.

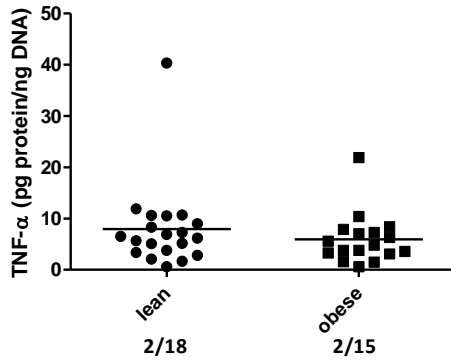
2A



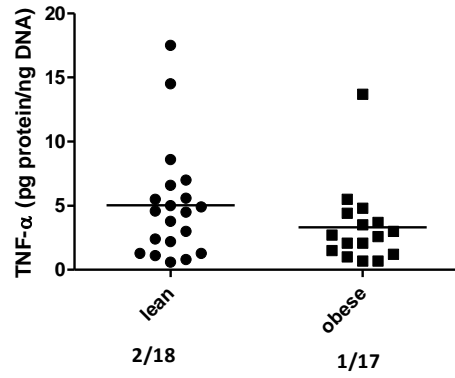
1
2
3
4
5
6
7
8
9
10
11
12
13
14
15
16
17
18
19
20
21
22
23
24
25
26
27
28
29
30
31
32
33
34
35
36
37
38
39
40
41
42
43
44
45
46
47
48
49
50
51
52
53
54
55
56
57
58
59
60
61
62
63
64
65

2B

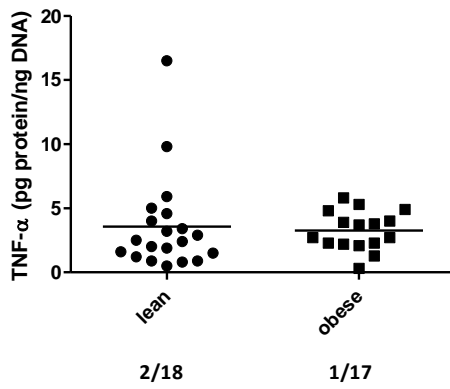
PP



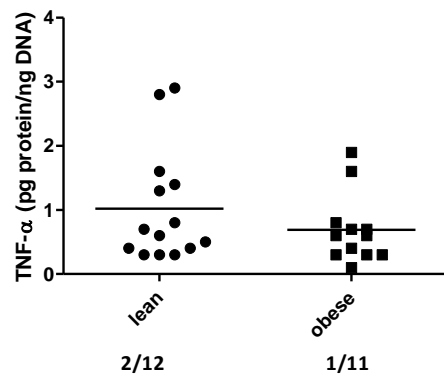
PLA



PET

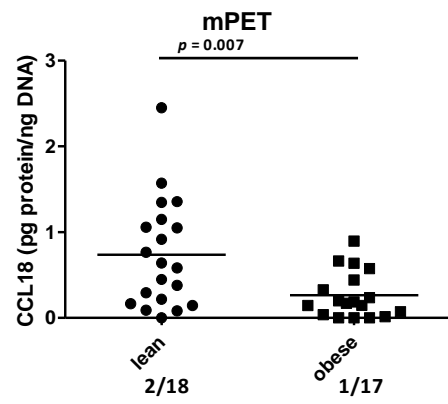
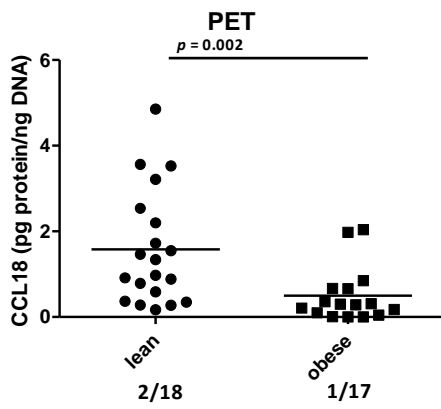
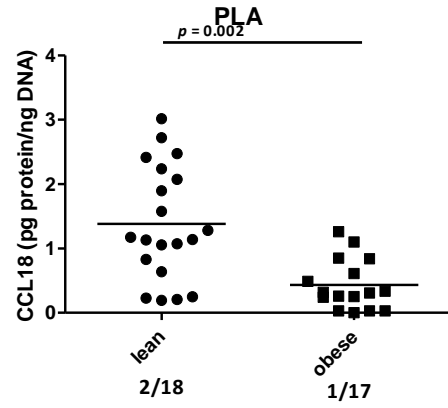
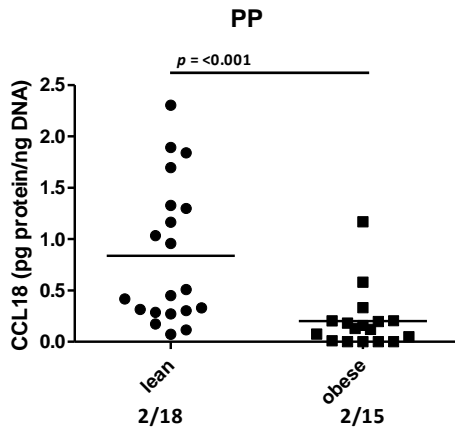


mPET



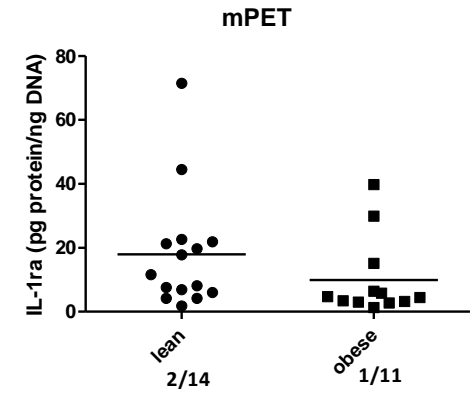
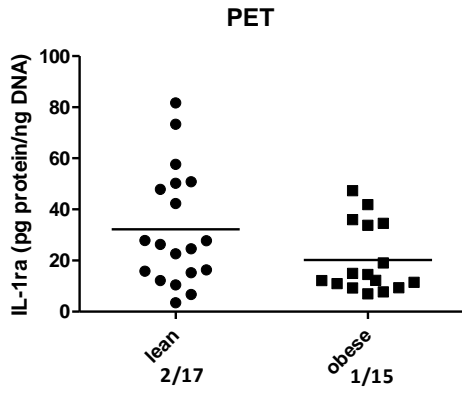
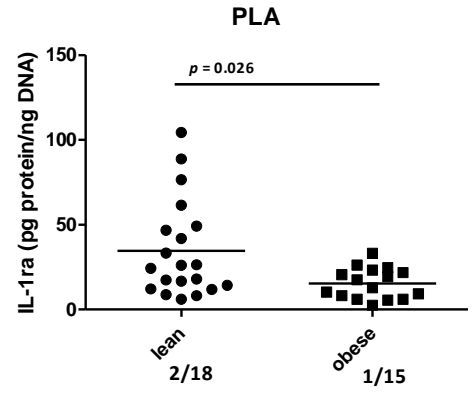
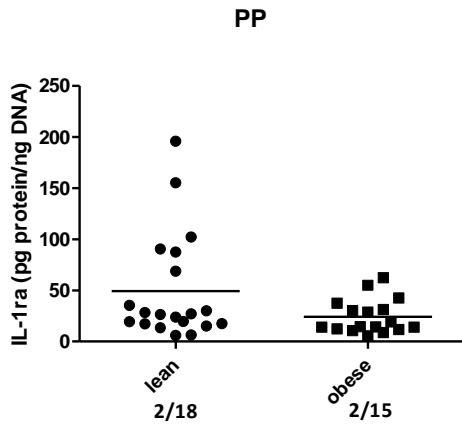
1
2
3
4
5
6
7
8
9
10
11
12
13
14
15
16
17
18
19
20
21
22
23
24
25
26
27
28
29
30
31
32
33
34
35
36
37
38
39
40
41
42
43
44
45
46
47
48
49
50
51
52
53
54
55
56
57
58
59
60
61
62
63
64
65

2C



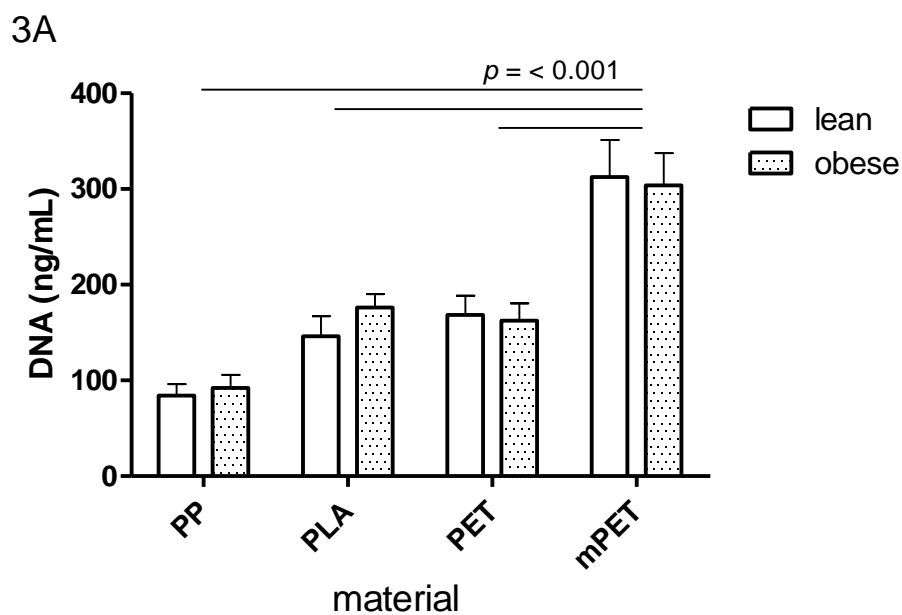
1
2
3
4
5
6
7
8
9
10
11
12
13
14
15
16
17
18
19
20
21
22
23
24
25
26
27
28
29
30
31
32
33
34
35
36
37
38
39
40
41
42
43
44
45
46
47
48
49
50
51
52
53
54
55
56
57
58
59
60
61
62
63
64
65

2D

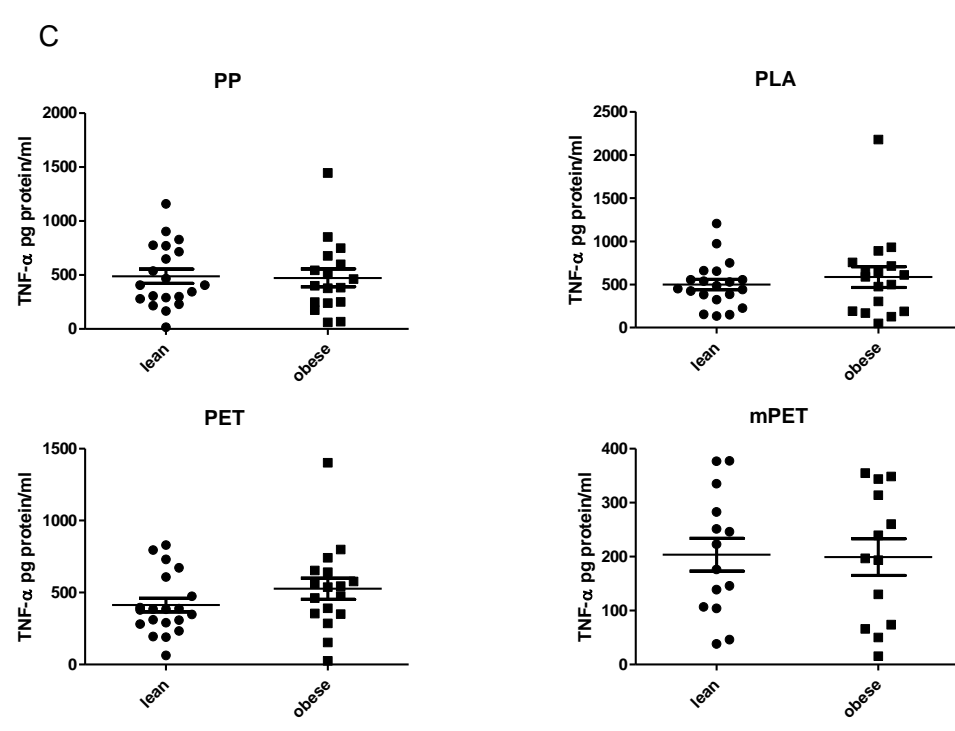
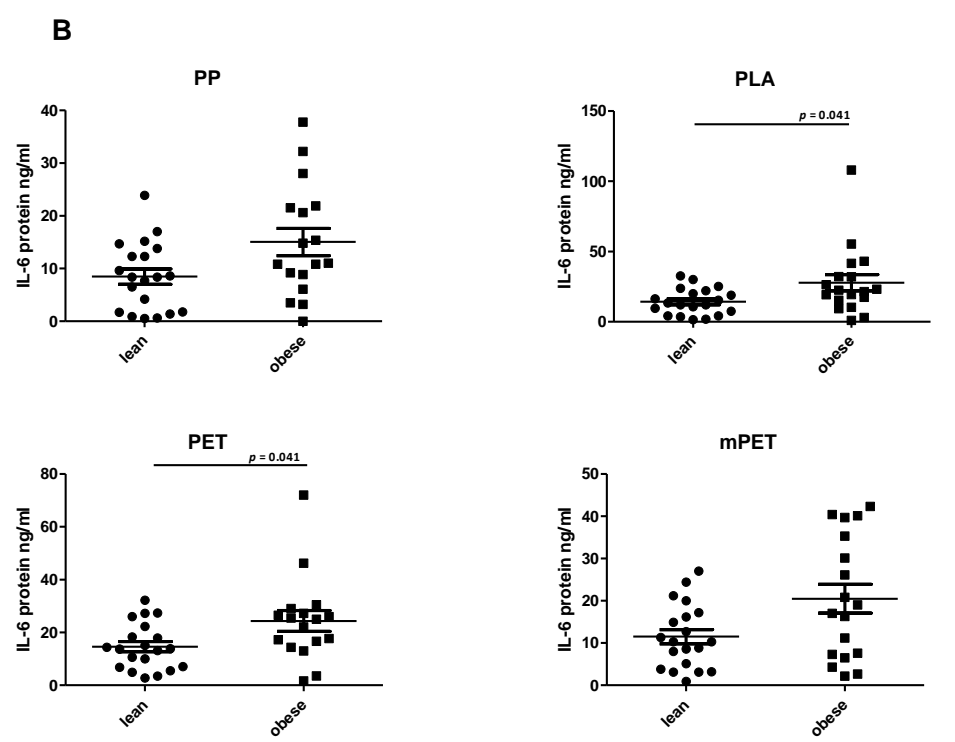


1
2
3
4
5
6
7
8
9
10
11
12
13
14
15
16
17
18
19
20
21
22
23
24
25
26
27
28
29
30
31
32
33
34
35
36
37
38
39
40
41
42
43
44
45
46
47
48
49
50
51
52
53
54
55
56
57
58
59
60
61
62
63
64
65

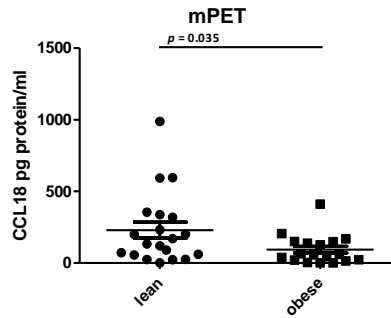
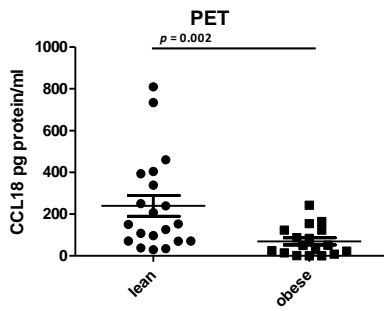
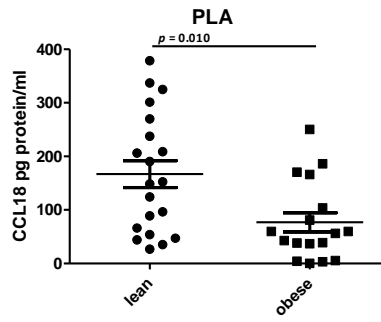
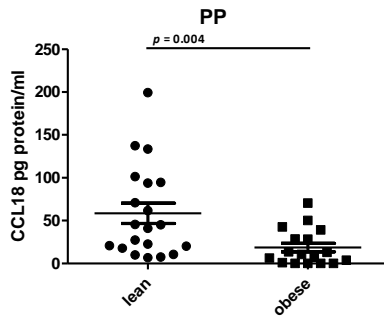
Supplementary Figure 3A. The amount of DNA as indication of the number of attached macrophages to the biomaterials. DNA is shown as ng/mL for polypropylene (PP), polylactic acid (PLA), monofilament polyethylene terephthalate (PET), and multifilament polyethylene terephthalate (mPET) for the lean (open bars) and obese (dotted bars) donors. Bars represent mean \pm S.E.M. $n = 20$ donors/ group, three samples/ per material/ per donor, p -value indicates a significant difference. Figure 3B, C, D, E Comparing macrophages from lean and obese donors cultured on different materials regarding B) IL-6 production and C) TNF α production and D) CCL18 production and E) IL-1ra production in ng/ml after 3 days of culture. Every dot represents a single donor. Line and whiskers indicate mean \pm S.E.M., p -values indicate a statistically significant difference. PP = polypropylene, PLA = polylactic acid, PET = monofilament polyethylene terephthalate, and mPET = multifilament polyethylene terephthalate.



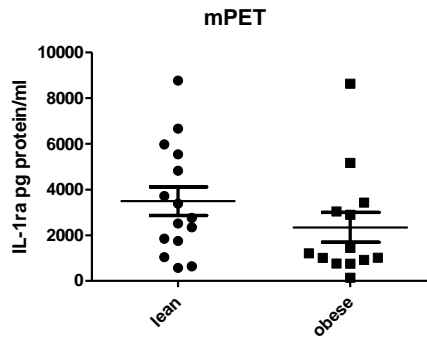
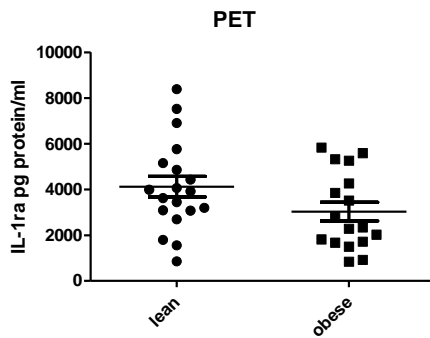
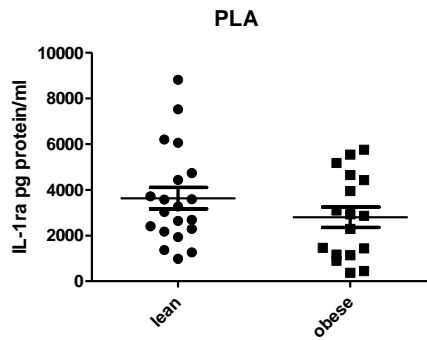
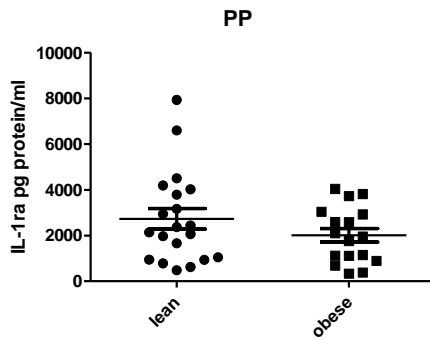
1
2
3
4
5
6
7
8
9
10
11
12
13
14
15
16
17
18
19
20
21
22
23
24
25
26
27
28
29
30
31
32
33
34
35
36
37
38
39
40
41
42
43
44
45
46
47
48
49
50
51
52
53
54
55
56
57
58
59
60
61
62
63
64
65



D



E

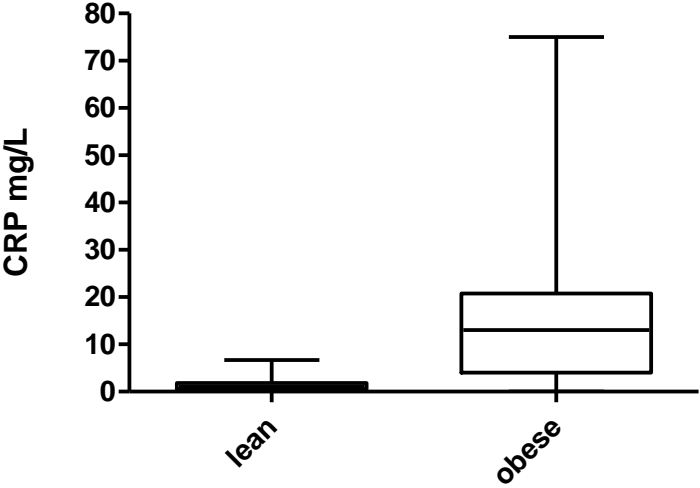


1
2
3
4
5
6
7
8
9
10
11
12
13
14
15
16
17
18
19
20
21
22
23
24
25
26
27
28
29
30
31
32
33
34
35
36
37
38
39
40
41
42
43
44
45
46
47
48
49
50
51
52
53
54
55
56
57
58
59
60
61
62
63
64
65

Figure 4

C-reactive protein (CRP) levels in mg/L in plasma of lean subjects vs. obese patients.

The middle line in box represent the median and whiskers the minimum and maximum; lean (0-7 mg/L) and obese (0-75 mg/L).



1
2
3
4
5
6
7
8
9
10
11
12
13
14
15
16
17
18
19
20
21
22
23
24
25
26
27
28
29
30
31
32
33
34
35
36
37
38
39
40
41
42
43
44
45
46
47
48
49
50
51
52
53
54
55
56
57
58
59
60
61
62
63
64
65

manuscript with remarks (changes)

[Click here to download Supplementary Files: Biomaterials Manuscript Informed trial 27062016 remarks.docx](#)

point-by-point response

[Click here to download Supplementary Files: Reply to reviewers inFORMED.docx](#)