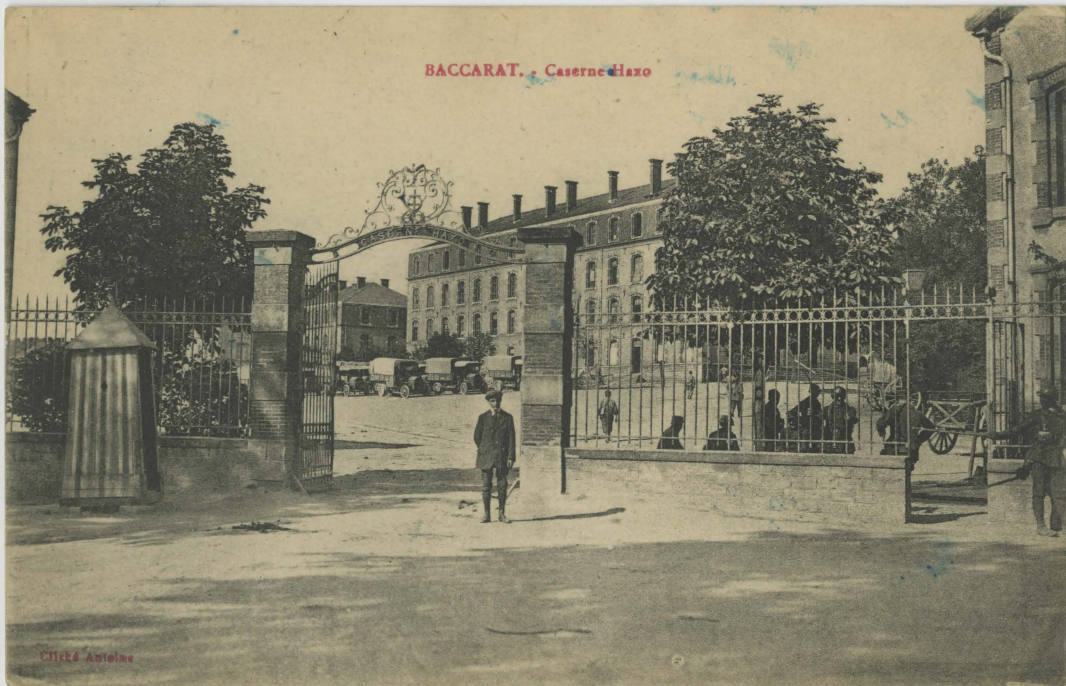


BACCARAT. Caserne Haxo

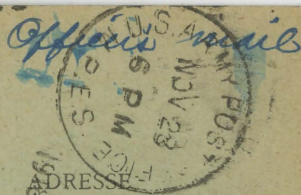


Cliebé Antelme

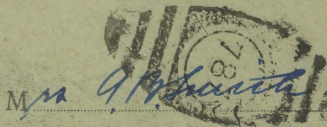
From:-

Amel. Blunt Capt. U.S.
E. H. #2 U.S.A.
Amer. E. S. France.

CORRESPONDANCE



A view of some large
French barracks about
300 yards from our
hospital, most thoroughly
bombed by the Germans,
all ~~ruined~~. One of our
first sources of excitement.



1434 Byron St. S. E.

Grand Rapids

A.B.

Amel. Blunt
Capt. U.S.



Michigan - U.S.A.