

**LĪDZSVARU MEKLĒJOT:
SAGLABĀŠANA,
IZMANTOŠANA,
RESTAURĀCIJA**

10. BALTIJAS VALSTU RESTAURATORU TRIENNĀLES
STENDA REFERĀTU KRĀJUMS
RĪGA 2014

**SEEKING BALANCE:
PRESERVATION,
USE, CONSERVATION**

THE 10TH BALTIC STATES TRIENNIAL RESTORERS'
POSTERS RIGA 2014

Lubova Belkova,
Latvian State Institute of Wood Chemistry,
Riga, 27 Dzerbenes str., lubova.belkova@edi.lv

Rudite Kalnina
Academic Library of the University of Latvia,
Riga, 10 Rupniecibas str., rudite.kalnina@lu.lv

STUDY OF THE PAPER USED IN MOLLIN'S TYPOGRAPHY (1589-1625)

Post abstract

In connection with the 425th anniversary of the opening of the first typography in Riga, studies on the properties of the used paper and its comparison with papers, which had been used in the same period of time in other typographies in Europe, were carried out. Printed materials in the period of time from 1589 to 1625 (16 items), a total of 28 books (Academic Library, Rare Book Department), were the object of the study.

Microstructure SEM images were obtained for the papers (magnifications from 30 to 5000), and the type of the raw material (flax), its quality and peculiarities were determined. Other paper parameters and properties (sheet size, thickness 0.07-0.32 mm, brightness 35-60 ISO %) were determined. The gained information is used for comparison of paper characterisation.

MEASUREMENT RESULTS

Measurements taken The Department of Manuscripts and Rare Books at Academic Library of the University of Latvia on 24 April 2013

I. Mollin's typography books 1589-1625

No.	Year of issue	Registration number	Page size cm	Number of pages	Sheet thickness mm
I-1.	1589	R 2042	8.5x13.4	78	0,185
I-2.	1591	R 2727	14.5x19.2	37	0,135-0,145
I-3.	1592	R 2063	9.4x15.0	20	0,145
I-4.	1592	R 2063	9.4x15.0	128	0,120
I-5.	1599	R 2055	15.0x18.5	396	0,115
I-6.	1608	R 2081	14.4x18.5	28	0,160
I-7.	1609	R 2068	14.7x18.2	8	0,160
I-8.	1614	R 22938	14.7x18.8	260	0,145
I-9.	1615	R 2081	14.4x18.5	51	0,140
I-10.	1615	R 2082	9.1x14.7	205	0,145
I-11.	1615	R 2082	9.1x14.7	136	0,120-0,130
I-12.	1622	R 2069	15.5x18.6	116	0,110-0,140
I-13.	1625	R 5943	19.0x28.8	331	0,130-0,100

II. Manuscript's paper used in Riga

No.	Year of use	Registration number	Page size cm	Sheet thickness mm
II-1.	1571-1607	R 6676	19.5x24.5	0,120-0,190
II-2.	1567	R 2727	14.5x19.2	0,120-0,160
II-3.	1598	R 5008	16.0x21.0	0,125-0,155

III. Books from European typography

No.	Year of issue	Registration number	Page size cm	Number of pages	Sheet thickness mm
III-1.	1591/94	R 7224	17.4x27.2	8	0,130-0,100
III-2.	1614	R 15489	11.1x17.0	591	0,190
III-3.	1599	R 1116	9.5x15.5	400	0,190
III-4.	1604	R 962	9.9x10.2	608	0,190
III-5.	1588	R 6002	23.5x33.8	1560	0,120

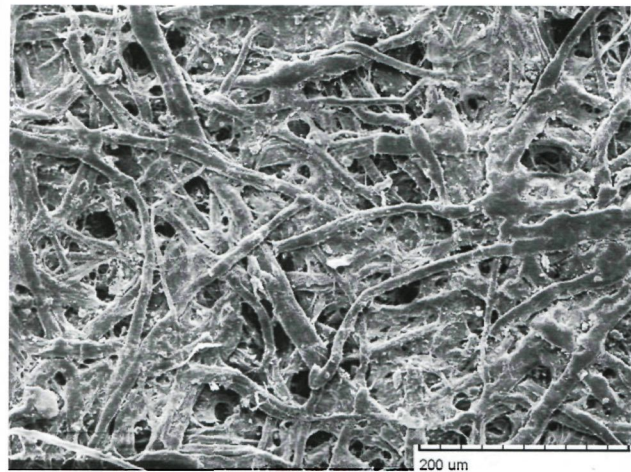


Fig.1. Flax paper of good quality with long and whole fibres. Mag. 500x (Mollin. 1615. Kurze Ordnung...)

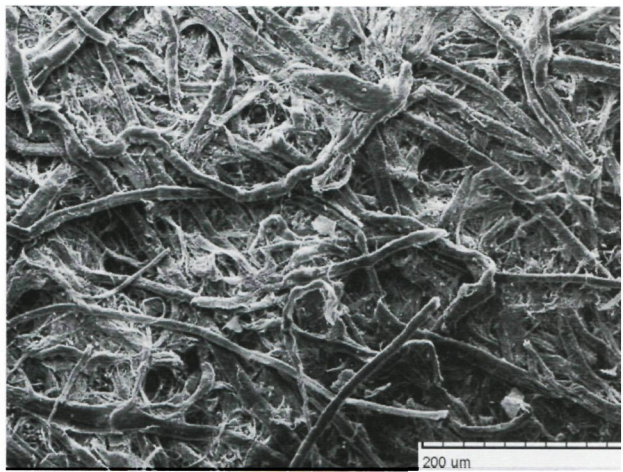


Fig. 2. Microstructure of decomposed flax paper. Mag. 500x (Mollin. 1609. Neuhoff J...)

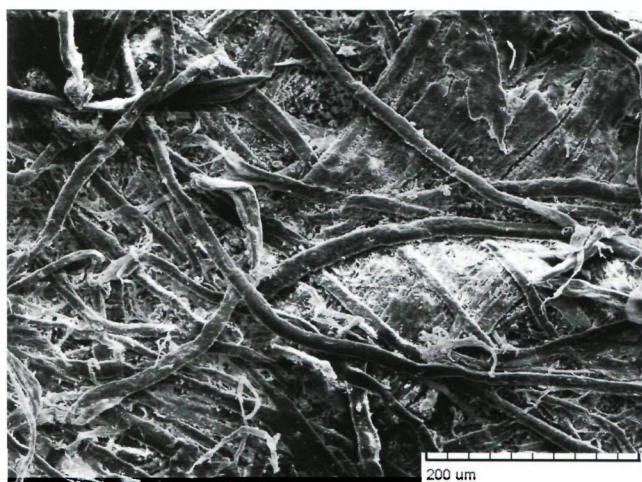


Fig. 3. a, b. Typical flax paper sample for the book of Mollin's typography in 1589-1609. Destructive paper with fibre irregularity. Mag. 200x, 500x (Mollin. 1591. Eines Erbarb...)

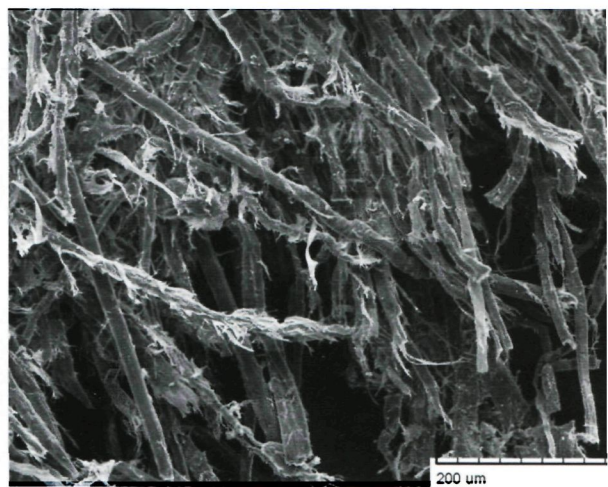


Fig. 4. The broken paper edge. Destructive fibres. Mag. 500x (Mollin. 1614. Hermann...)