



Gastric MANECs:

A casuistic of a Portuguese Centre



INTRODUCTION

Gastric mixed adenoneuroendocrine carcinomas (MANECs) are rare malignancies composed of an adenocarcinoma and a neuroendocrine carcinoma with a variable grade of differentiation. Diagnosis is based on the tumor architecture and immunohistochemistry markers such as chromogranin, synaptophysin, CD56 and neuron-specific enolase. The treatment is variable and dependent on multidisciplinary discussion.

OBJECTIVES

We report three cases of gastric MANECs diagnosed and treated in a central hospital in Lisbon.

AGUIAR, Catarina; FRADIQUE, Caldeira; QUARESMA, Luísa; MATIAS, Rosa; GUALDINO, J. Silva, VASCONCELOS, Vasco; SACADURA, João; OLIVEIRA, Mário; CABRITA, Fernanda; MARQUES, Mateus; ESTEVES, Jorge; COSTA, Lígia; FENANDEZ, Gonçalo; GUEDES DA SILVA, José.
UNIDADE PATOLOGIA ESOFAGOGÁSTRICA
Director da Área Cirúrgica: Professor Doutor Eduardo Barroso

Case 1

- 75Y, man patient with gastric cardia MANEC;
- clinical stage III (T4N1/2M0) confirmed by a staging laparoscopy on January 2016;
- Histology confirmed MANEC gastric tumor;

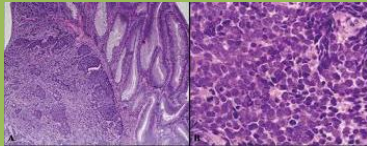


Fig. 1 - A well differentiated adenocarcinoma admixed with neuroendocrine components (hematoxylin and eosin (HE) staining, x100)

- Proposed to neoadjuvant therapy;
- Actually, he is on treatment by neoadjuvant chemotherapy, started on February 2016.

Case 2

- 83Y, man patient with gastric body MANEC,;
- Clinical stage III (T3N1M0);
- We performed a radical gastrectomy with Roux-en-Y anastomosis and a D2 lymphadenectomy on September 2015;
- Histology confirmed MANEC gastric tumor with histological stage pT3N1

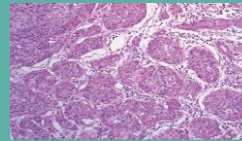


Fig.2: Poorly differentiated adenocarcinoma admixed with neuroendocrine components (hematoxylin and eosin (HE) staining, x100)

- He is currently being treated with chemotherapy.

Case 3

- 77Y, female patient with gastric antrum MANEC;
- Clinical stage II (T2N1M0);
- We performed a subtotal gastrectomy with Billroth II anastomosis, and a D2 lymphadenectomy on February 2013;
- Histology confirmed MANEC gastric tumor with histological stage pT1bN1G3I0V0Pn0

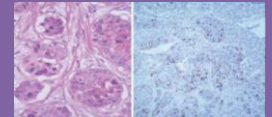


Fig.3-The neuroendocrine carcinoma cells show high mitotic rate (HE staining, x400); Immunohistochemical assay for Ki67 showing high proliferating index (x100).

- The patient was treated with adjuvant chemotherapy
- 5years of disease-free.

DISCUSSION/CONCLUSION

Gastric MANEC are a heterogeneous group of tumors that exhibit specific immunohistochemical characteristics, which are related with better prognosis. Usually biopsy revealed the adenocarcinoma and the final diagnosis of MANEC is confirmed by surgical specimen.