

## ORIGINAL ARTICLE

# Stenosis of the branches of the neopulmonary artery after the arterial switch operation: A cardiac magnetic resonance imaging study

Boban Thomas, José Diogo Ferreira Martins<sup>1</sup>, Nuno Jalles Tavares, Artur Lopes, Fátima F Pinto<sup>1</sup>, José Fragata<sup>2</sup>  
 RM Caselas, Lisbon, <sup>1</sup>Pediatric Cardiology Service, Hospital Santa Marta, Lisbon, <sup>2</sup>Cardiac Surgery, Hospital Santa Marta, Lisbon, Portugal

## ABSTRACT

- Background** : The neonatal arterial switch operation (ASO) is now the standard of care for children born with transposition of the great arteries. Stenosis of the neopulmonary artery on long-term follow up is a known complication.
- Methods** : We performed a retrospective analysis of eleven patients who underwent a cardiac magnetic resonance imaging (MRI) due to echocardiographic evidence suggestive of stenosis of the neopulmonary artery or its branches (mean estimated Doppler gradient 48 mmHg, min 30 mmHg, max 70 mmHg). A comprehensive evaluation of anatomy and perfusion was done by cardiac MRI.
- Results** : The branches of the neopulmonary artery (neo PA) showed decreased caliber in three patients unilaterally and in two patients, bilaterally. Magnetic resonance (MR) perfusion studies showed concomitant decreased flow, with discrepancy between the two lungs of 35/65% or worse, only in the three patients with unilateral obstruction, by two different MR perfusion methods.
- Conclusions** : Cardiac MR can be used as a comprehensive non-invasive imaging technique to diagnose stenosis of the branches of the neopulmonary after the ASO, allowing evaluation of anatomy and function of the neoPA, its branches, and the differential perfusion to each lung, thus facilitating clinical decision making.
- Keywords** : Arterial switch operation, cardiac magnetic resonance imaging, neopulmonary branch artery stenosis

## INTRODUCTION

The neonatal arterial switch operation (ASO) is now the standard of care for children born with transposition of the great arteries (TGA), with excellent results in most experienced centers. There has always been a concern for the long term outcome of these patients due to the extensive surgical maneuvers employed in the initial

repair. A wide range of long-term problems such as obstruction of the reconstructed right-sided tract, the neopulmonary artery (neoPA) and its branches, coronary artery stenosis, neo-aortic root enlargement with valvular regurgitation, and recurrent arch obstruction, may occur. In one multicenter study, stenosis of the neoPA and/or its branches was noted in approximately 21% of patients, while others detected increased flow velocity on echocardiography in 24% of patients, followed up over a period of  $4.8 \pm 3.9$  years.<sup>[1,2]</sup> Abnormal pulmonary blood flow distribution related to branch pulmonary artery stenosis or hypoplasia has been implicated in reduced exercise capacity and increased ventilatory drive.<sup>[3]</sup>

Cardiac magnetic resonance imaging (CMRI) is a useful technique to study patients with operated congenital heart disease, especially many years after surgical repair due to inadequate echocardiographic views. We

Access this article online	
Quick Response Code: 	Website: <a href="http://www.annalspc.com">www.annalspc.com</a>
	DOI: 10.4103/0974-2069.107230

**Address for correspondence:** Dr. Boban Thomas, Cardiac Imaging Section, RM Caselas, Rua Carolina Angelo, 1400-045 Lisbon, Portugal.

E-mail: [bobantho@gmail.com](mailto:bobantho@gmail.com)

report our experience in patients with suspected stenosis of the branches of the neoPA after the ASO, using a CMRI protocol that included morphological analysis, phase-velocity studies to evaluate flow and angiography using a gadolinium-based contrast.

## MATERIALS AND METHODS

The study was conducted over a 24 month period (2009-2011), during which 60 patients who had undergone the ASO, within 30 days after birth, had routine echocardiographic studies in the pediatric or adult congenital heart disease clinic. Eleven patients showed findings suggestive of stenosis of the neoPA or its branches with a mean estimated Doppler gradient 48 mmHg (min 30 mmHg, max 70 mmHg). These patients then had CMRI exams on a GE 1.5T HDxT system with a 8-channel cardiac coil, with ECG gating and apnea for some sequences. After an axial scout, a black blood sequence with T1-weighting was acquired in the axial plane to visualize the neoPA and its branches. Then, axial cine imaging was performed. Subsequent cine imaging of the neoPA in a sagittal orientation was performed to delineate the PA trunk, after which a perpendicular cut was made to perform a phase-velocity study with the patient breathing freely. After this, a cut was made perpendicular to each branch of the neoPA and a phase-velocity study was repeated. If flows and morphological appearance confirmed the presence of stenosis anywhere, then an angiographic sequence (either bolus-tagged or time-of-flight) was performed to assess the extent of the stenosis and its morphology. Towards the end of the study, a phantom was placed in the unit and all phase velocity sequences repeated on the phantom while the patient was either seated in the room or placed on a table with continued electrocardiographic monitoring for gating purposes. This sequence was then used for background correction and final analysis in the flow studies.

For all phase contrast (PC)-MRI studies, the forward flow volume (FFV), backward flow volume (BFV) and the net flow volume (NFV) were calculated with the NFV being the difference between the FFV and the BFV. The perfusion to each lung, designated as differential perfusion, was calculated using two methods – the FFV and the NFV. Differential perfusion of the left lung (for example) through the left branch of the neoPA (LPA) was calculated as follows:

- $\text{NFV of LPA} / (\text{NFV of LPA} + \text{NFV of RPA}) \times 100\%$  (by the NFV method)
- $\text{FFV of LPA} / (\text{FFV of LPA} + \text{FFV of RPA}) \times 100\%$  (by the FFV method)

The differential perfusion by each method was correlated as well.

The regurgitant fraction (RF) of each branch was then calculated as  $\text{BFV} / \text{FFV}$  and expressed as a percentage. For practical purposes, mathematically, a larger RF

with decreased NFV on one side would imply a smaller differential perfusion to that lung (when using the NFV method).<sup>[4]</sup> In the NFV method, a higher regurgitant fraction, accentuates the difference in perfusion between the two lungs. A flow discrepancy between the two lungs of 35 or 65% or worse has recently been recommended as a threshold for intervention in a BPA.<sup>[5]</sup> Gradients were not calculated across sites of stenosis due to technical problems inherent in the phase contrast MR technique. Anatomic diameters were calculated as an indicator of stenosis despite the pulsatility of the neoPA and branches. On the cine sequences, the smallest branch diameter (irrespective of the phase of the cardiac cycle) was used to calculate the Z-scores of the neoPA and its branches.

## RESULTS

The detailed anatomical and flow parameters for each patient we studied are presented in Tables 1-3. The neoaorta was dilated in nine patients and compressed the trunk of the neoPA in three patients. The branches of the neopulmonary artery showed a decreased caliber in three patients unilaterally and, in two patients, bilaterally. MR perfusion studies showed concomitant decreased flow, with discrepancy between the two lungs of 35 or 65% or worse, only in the three patients with unilateral stenosis, by two different MR perfusion methods. Five patients had stretching of the branches of the neoPA without any difference in the differential perfusion.

In one patient with bilateral stenosis on anatomic images, the NFV method gave 26% perfusion to the right side while the FFV method gave 41%. In spite of the discrepancy in this case, a strong correlation between the two methods (FFV and NFV) was detected ( $r = 0.947$ ,  $P < 0.001$ ). In the other patient with decreased caliber of the branches bilaterally, the cause appeared to be stretching of the branches over a dilated neoaorta. In this patient, despite an anatomic decrease in the caliber bilaterally, no difference in differential perfusion was noted. NeoPA and neoaorticvalvular regurgitation, when detected were clinically insignificant [Figure 1].

The cause of increased Doppler gradient was therefore ascertained to be compression of the trunk of neoPA in three patients, unilateral branch stenosis in three patients, bilateral branch stretching with compression in two patients and stretching of one or both branches without compression in three patients.

## DISCUSSION

Stenosis of NeoPA or it's branches remain the commonest cause of late reintervention after ASO. In a comprehensive study of 21 patients, 16 had supra-avalvular stenosis involving the neoPA alone or along with its branches.<sup>[6]</sup>

**Table 1: Descriptive anatomical findings in patients**

Patient	BSA	Age	Z-AA	Z-sinus	AR (%)	RF (PA)	Anatomical findings
1	0.5	1	-2.55	0.19	Mild AR (16)	12.00	Stenosis at origin of the RPA, possible stenosis of LPA
2	1.7	18	-2.40	2.64	Mild AR (8)		Dilated neo-aortic root, LPA stenosis at origin
3	1.8	18	-1.38	8.52			Dilated neo-aortic root, BPAs stretched at the bifurcation where the dilated neo-aorta then reduces abruptly in diameter
4	0.79	6	0.70	2.64	Mild AR (6), Qp/Qs 1.5:1	29.00	Dilated neo-aortic root directed anteriorly compressing proximal portion of the NPA with mild neopulmonary valve stenosis
5	2	19	0.51	8.82	Mild AR (13)	11.70	Dilated neo-aortic root directed anteriorly compressing NPA
6	1.5	10	1.35	4.13	Mild AR (27)	7.30	Dilated neo-aortic root directed anteriorly compressing proximal portion of NPA with stretching of the RPA with a decreased calibre compared to the LPA
7	0.6	3	0.27	3.79	Mild AR (14)	11.93	Dilated neo-aortic root directed anteriorly compressing proximal portion of NPA with stretching of the LPA with a decreased calibre compared to the RPA
8	0.65	1	-0.57	0.40	No AR	9.00	Neopulmonary valve stenosis with mild stretching of the LPA
9	1.9	21	-0.10	9.59	Mild AR		Dilated neo-aortic root with mild reduction in calibre at origin of each BPA
10	0.7	3	-1.05	2.19	No AR	10.00	Dilated neo-aortic root with mild kinking at origin of RPA
11	1.7	12	1.00	3.13	Moderate AR (26)		Dilated neo-aortic root with reduction in calibre of LPA origin

BSA: Body surface area; RF: Regurgitant fraction; AA: Ascending aorta; AR: Aortic regurgitation; PA: Pulmonary artery. When no value is provided for regurgitant fraction of neoPA or aortic regurgitation, the values were less than 3%

**Table 2: Dimensions (in mm), Z-scores and differential perfusion in the neoPA and its branches**

Patient	neoPA	neoPA Z-score	RPA (sten)	RPA Z-score	LPA (sten)	LPA Z-score	DP-LPA-F	DP-LPA-N	DP-RPA-F	DP-RPA-N	RVEF	Echo gradient
1	12	-0.28	4	-4	3.2	-4.5	59	76	41	24	55	70
2	19	-1.15	10.6	-2.1	4.5	-5.94	13	14	87	86		65
3	15	-2.92	6.3	-5.73	6.5	-3.97	44	55	56	45	16	40
4	19	0.7	8	-1.79	10	0.42	55	53	45	47	56	40
5	21	-1.18	13.8	-1.84	13	-0.26	59	59	41	41	67	30
6	15	-2.38	3.4	-8.46	13	-0.66	71	69	29	31		50
7	11	-1.91	6.8	-0.66	4.5	1.6	46	51	54	49		60
8	13	-0.66	8.1	-0.73	10.3	1.42	39	39	61	61		62
9	24	-0.07	11.2	-2.2	11.2	-0.9	54	56	46	44	54	30
10	12	-1.76	6.8	-2.3	11	1.55	58	57	42	43		40
11	17	-1.91	15.6	0.19	5	-5.35	21	21	79	79		50

DP-LPA-N and DP-LPA-F represent differential perfusion to the LPA using the NFV and FFV methods respectively. RVEF in percentage and echo Doppler gradient in mmHg. Patients 2, 6, and 11 would warrant intervention recommended by findings that are concordant by both methods while patient 1 has equivocal findings as explained in the text. Patients 1 and 3 had bilateral decrease in branch diameters and therefore a clear difference between the two lungs in differential perfusion may not be demonstrable

**Table 3: Dimensions, Z-scores and flow in the neoPA also indexed for BSA**

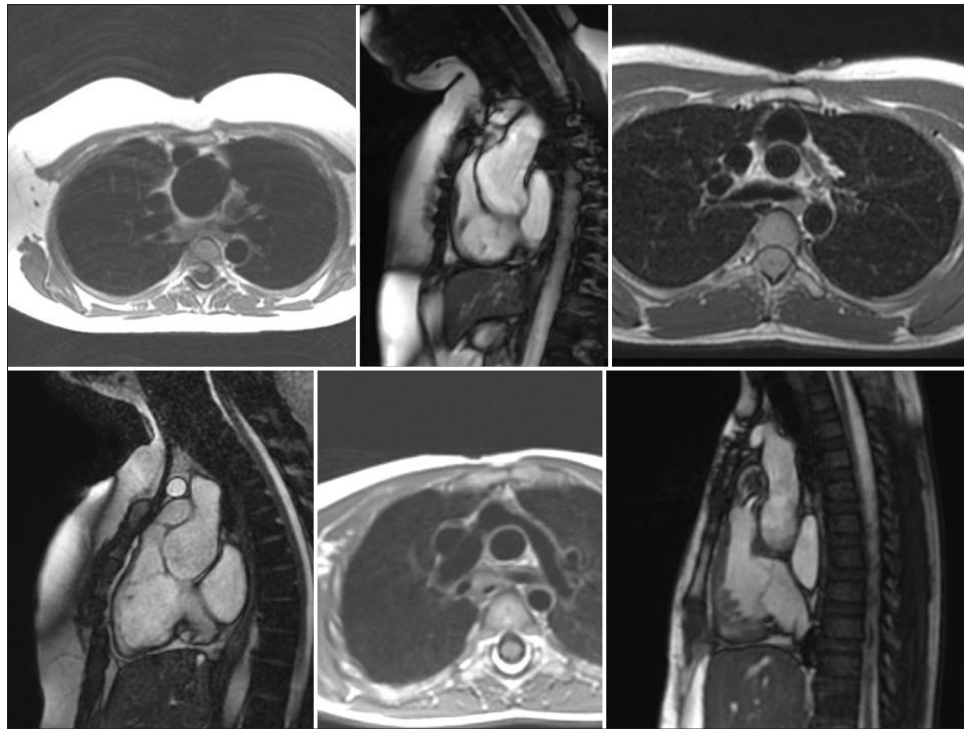
Patient	BSA	neoPA	neoPA/BSA	LPA (FFV)	LPA (NFV)	RPA (FFV)	RPA (NFV)
1	0.5	1020	2040	560	448	390	138
2	1.7	5800	3411	710	655	4800	3813
3	1.8	5856	3253	2791	2571	3504	2126
4	0.79	4088	5174	2344	1979	1872	1760
5	2	7995	3997	4875	4700	3430	3300
6	1.5	5390	3593	3937	3217	1616	1505
7	0.6	1890	3150	779	700	930	678
8	0.65	1900	2923	700	650	1128	1000
9	1.9	9956	4978	5510	4510	4764	3432
10	0.7	2090	2985	1255	1073	895	815
11	1.7	7792	4583	1613	1606	6262	5968

DP: Differential perfusion and NFV and FFV represent net flow volume ml/min and forward flow volume respectively. LPA and RPA are the left and right branches of the neoPA

The reported incidence of stenosis at any site in the right ventricular outflow ranging from the subvalvular to the supravalvular region vary between 7-50%.<sup>[7,8]</sup> In one study, the initial incidence was noted to be 52% but dropped to 24% when only gradients above 20 mmHg were considered.<sup>[2]</sup>

The patients in our series were investigated using CMRI after echocardiography. They showed evidence of significant right-sided obstruction namely increased velocity at the RV-PA junction, increase in the velocity of the jet of tricuspid regurgitation or altered interventricular septal motion, indicating high RV pressures. The exact location and quantum of obstruction may be difficult to judge by echo. CMRI confirmed the presence of significant flow difference of greater than 65 or 35% in one lung, compared to the other, using both methods, in only three patients. These three patients had unilateral obstruction predominantly on anatomic images. Flow studies by CMRI, devoid of radiation, obviate the need for perfusion scintigraphy studies to evaluate differential flow to the lungs and have been validated against scintigraphy.<sup>[9]</sup> Therefore, scintigraphy was not performed in any of our patients but may be useful in those with discrepant findings by the two methods we used.

Although, we feel that one of the strengths of our study is the use of two methods to calculate the differential perfusion to each lung, some important caveats should be kept in mind. One group has shown that in patients

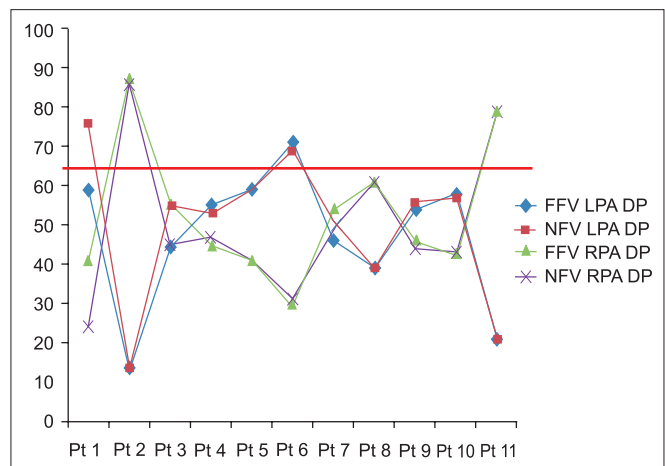


**Figure 1:** From top left to right – dilated neoaorta in a black blood sequence in an axial plane followed by a sagittal plane and a tight stenosis at the origin of the LPA. Bottom left to right – compression of the RVOT and origin of the NPA, kinking of origin of the LPA and mild stenosis at the pulmonary valve

with previously operated tetralogy of Fallot (TOF), the conventional NFV method underestimated left lung perfusion and they attributed it to a greater regurgitant fraction in the LPA<sup>[4]</sup> and the FFV method correlated better with perfusion scintigraphy. In one patient in our series, intervention would have been recommended for the right branch of the neoPA, by the results of one method (NFV) but not by the other (FFV) (patient 1 in Figure 2). This patient had a regurgitant fraction of 64% in the right branch and this may have accounted for the significant difference in both methods.

To the best of our knowledge, there are only two studies that have addressed this problem using CMRI methods.<sup>[3,10]</sup> One study<sup>[10]</sup> reported that the branches of the neoPA had different diameters during systole (smaller) and diastole as the neoaorta enlarged during systole compressing one or both branches. We also evaluated the diameters of the branches and have noted that a severe narrowing, confirmed by the Z-score of the stenotic branch, is accompanied by a decrease in perfusion to the lung supplied by that branch. We have also used a phantom correction method to avoid analytical errors as recommended by recent studies.<sup>[11,12]</sup> All flow studies in our cohort were performed with the patient breathing freely, which is more physiological than apnea.

In our study, the enlargement of the neoaorta, was a causative factor in the compression of the trunk or stretching of the neoPA or its branches in most of the



**Figure 2:** Differential perfusion (DP) to each lung – the left pulmonary artery (LPA) and the right pulmonary artery (RPA) detected by the two methods as described in the text – forward flow volume (FFV) and net flow volume (NFV). In most cases for each branch, either method gives the same value but there is a discrepancy between the two methods for patient 1. The red horizontal line represents the threshold for intervention where one branch has greater than 65% and the other branch with 35% or less. Using the NFV method, but not the FFV method, would recommend intervention in the RPA in patient 1

cases. This is based on our findings on cine imaging where systolic expansion of the neoaorta compresses the branches or the trunk of the neoPA. In some cases, where we observed that the decreased branch diameters were due to the stretching of the branches over the dilated

neoaorta, the Lecompte maneuver may have accentuated this. We cannot rule out the possibility that an acute angle at the bifurcation of the neoPA after the Lecompte maneuver was also a contributing factor to any Doppler gradient detected on echocardiography.

The evolution of the neo-aortic and neopulmonary roots after the ASO has been studied. Some authors have reported the neopulmonary valve to be abnormally small or even dysplastic.<sup>[13]</sup> In contrast, the neo-aortic valve tends to enlarge after the ASO. While the neo-aortic root and the annulus is larger after the ASO, compared to normal controls, the diameter at the anastomotic site in the aorta is decreased.<sup>[14]</sup> The dilatation of the neo-aortic root is progressive while the annulus remains stationary after a while.

### Limitations

This was a retrospective analysis of cases in our database where image acquisition had been left to the discretion of the imager. Pulmonary vein flows were not obtained in this study, that could have been useful for internal validation of the flow parameters. RV dimensions and volumes were obtained only in a few patients. The technique is more accurate in unilateral narrowing, if there is bilateral narrowing, flow can be reduced to both lungs while maintaining a differential perfusion that may be equal on both sides.

## CONCLUSIONS

A comprehensive CMRI can be used as a non-invasive imaging technique to diagnose stenosis of the branches of the neoPA after the ASO. Differential perfusion analysis in each lung by the phase velocity method and anatomical findings of narrowing should be considered in the clinical decision-making for these patients.

## REFERENCES

1. Jatene MB, Jatene IB, Oliveira PM, Moysés RA, Souza LC, Fontes V, *et al.* Prevalence and surgical approach of supralvalvular pulmonary stenosis after Jatene operation for transposition of great arteries. *Arq Bras Cardiol* 2008;91:17-24.
2. Bové T, De Muelder F, Vandenplas G, De Groote K, Panzer J, Suys B, *et al.* Midterm assessment of the reconstructed arteries after the arterial switch operation. *Ann Thorac Surg* 2008;85:823-30.
3. Giardini A, Khambadkone S, Taylor A, Derrick G. Effect of abnormal pulmonary flow distribution on ventilatory efficiency and exercise capacity after arterial switch operation for transposition of great arteries. *Am J Cardiol* 2010;106:1023-8.
4. Wu MT, Huang YL, Hsieh KS, Huang JT, Peng NJ, Pan JY, *et al.* Influence of pulmonary regurgitation inequality

on differential perfusion of the lungs in tetralogy of Fallot after repair: A phase-contrast magnetic resonance imaging and perfusion scintigraphy study. *J Am Coll Cardiol* 2007;49:1880-6.

5. Feltes TF, Bacha E, Beekman RH, Cheatham JP, Feinstein JA, Gomes AS, *et al.* Indications for cardiac catheterization and intervention in pediatric cardiac disease: A scientific statement from the American Heart Association. *Circulation* 2011;123:2607-52.
6. Gandhi SK, Pigula FA, Siewers RD. Successful late reintervention after the arterial switch procedure. *Ann Thorac Surg* 2002;73:88-93.
7. Lupinetti FM, Bove EL, Minich LL, Snider AR, Callow LB, Meliones JN, *et al.* Intermediate-term survival and functional results after arterial repair for transposition of the great arteries. *J Thorac Cardiovasc Surg* 1992;103:421-7.
8. Nogi S, McCrindle BW, Boutin C, Williams WG, Freedom RM, Benson LN. Fate of the neopulmonary valve after the arterial switch operation in neonates. *J Thorac Cardiovasc Surg* 1998;115:557-62.
9. Sridharan S, Derrick G, Deanfield J, Taylor AM. Assessment of differential branch pulmonary blood flow: A comparative study of the phase contrast magnetic resonance imaging and radionuclide lung perfusion imaging. *Heart* 2006;92:963-8.
10. Gutberlet M, Boeckel T, Hogsten N, Vogel M, Kühne T, Oellinger H, *et al.* Arterial switch procedure for D-transposition of the great arteries: Quantitative midterm evaluation of hemodynamic changes with cine MR imaging and phase-shift velocity mapping-initial experience. *Radiology* 2000;214:467-75.
11. Gatehouse PD, Rolf MP, Graves MJ, Hofman MB, Totman J, Werner B, *et al.* Flow measurement by cardiovascular magnetic resonance: A multi-centre multi-vendor study of background phase offset errors that can compromise the accuracy of derived regurgitant or shunt flow measurements. *J Cardiovasc Magn Reson* 2010;12:5.
12. Holland BJ, Printz BF, Lai WW. Baseline correction of phase-contrast images in congenital cardiovascular magnetic resonance. *J Cardiovasc Magn Reson* 2010;12:11.
13. Nakanishi T, Momoi N, Satoh M, Yamada M, Terada M, Nakazawa M, *et al.* Growth of the neopulmonary valve annulus after the arterial switch operation in transposition of the great arteries. *Circulation* 1996;94:27-31
14. Hourihan M, Colan SD, Wernovsky G, Maheshwari U, Mayer JE Jr, Sanders SP. Growth of the aortic anastomosis, annulus, and root after the arterial switch procedure performed in infancy. *Circulation* 1993;88:615-20.

**How to cite this article:** Thomas B, Martins JD, Tavares NJ, Lopes A, Pinto FF, Fragata J. Stenosis of the branches of the neopulmonary artery after the arterial switch operation: A cardiac magnetic resonance imaging study. *Ann Pediatr Card* 2013;6:29-33.

**Source of Support:** Nil, **Conflict of Interest:** None declared

Copyright of Annals of Pediatric Cardiology is the property of Medknow Publications & Media Pvt. Ltd. and its content may not be copied or emailed to multiple sites or posted to a listserv without the copyright holder's express written permission. However, users may print, download, or email articles for individual use.