

Boston College Law School Digital Commons @ Boston College Law School

Law School Publications

Law School Archive

3-10-2011

Dean of the Law School: Leadership Statement

Boston College Law School

Witt/Kieffer

Follow this and additional works at: http://lawdigitalcommons.bc.edu/law_school_publications

 Part of the [Legal Education Commons](#)

Digital Commons Citation

Boston College Law School and Witt/Kieffer, "Dean of the Law School: Leadership Statement" (2011). *Law School Publications*. Paper 63.

http://lawdigitalcommons.bc.edu/law_school_publications/63

This Article is brought to you for free and open access by the Law School Archive at Digital Commons @ Boston College Law School. It has been accepted for inclusion in Law School Publications by an authorized administrator of Digital Commons @ Boston College Law School. For more information, please contact nick.szydowski@bc.edu.



Boston College

Chestnut Hill, Massachusetts

DEAN OF THE LAW SCHOOL

LEADERSHIP STATEMENT



November 2010

WITT / KIEFFER

THE ROLE OF THE DEAN OF BOSTON COLLEGE LAW SCHOOL



Boston College Law School, ranked among the top 30 law programs in the United States, seeks a distinguished legal scholar or member of the legal profession to serve as its dean. Founded in 1929 and located on a 40-acre campus in Newton, Massachusetts, the Law School has 817 students and 59 full-time faculty. Boston College and its Law School are rooted in the Jesuit, Catholic tradition of intellectual excellence and service, and seek to promote the integration of faith and justice through curricular offerings and extracurricular projects. The faculty of Boston College Law School are nationally respected scholars, teachers, and mentors, and the School offers one of the strongest clinical programs in the country. Additional information about Boston College and its Law School can be found at www.bc.edu and www.bc.edu/schools/law.

The Dean is the academic and administrative leader of the Law School and part of the senior leadership team of Boston College.

Working with faculty, staff, students, alumni, and the University administration, the Dean of Boston College Law School will provide:

- **Leadership for the Law School:** Provide the leadership and vision to advance Boston College's position among the top law schools in the country, sustaining a commitment to excellence and advancing the Law School's scholarship, teaching, clinical programs, and preeminence in professional education;
- **University leadership:** Ensure the alignment of the Law School with Boston College's mission and its Jesuit, Catholic heritage, and continue to strengthen a Law School culture of discernment and student formation, social justice, and ethical practice; serve as a member of the University leadership team, working collaboratively and effectively with Boston College's President, William P. Leahy, S.J.; its Provost and Dean of Faculties, Cutberto Garza; and other senior leaders;
- **Support for faculty:** Support the Law School's faculty, fostering a collegial academic community conducive to excellence in scholarship and teaching; contribute to the strength of the faculty by leading faculty hiring, mentoring, and promotions;
- **Support for students:** Develop an understanding of the student body and maintain an appropriate climate for learning;

- **Representation of the Law School:** Serve as the Law School's chief representative and advocate, articulating the Law School's vision, strategy, and progress externally to potential students and faculty, alumni, advisory bodies, corporate recruiters, and donors, as well as internally to the Boston College community; and strive to create momentum and a further call to action from key constituencies;
- **Management:** Provide effective management of the Law School and its programs, including exploring new curricular initiatives, overseeing budgets to ensure sustainable operations of the highest quality, and working closely with Dean's Office staff to provide excellent services; form strong and productive working relationships with members of the School's leadership team, faculty, staff, students, and alumni;
- **External relationships:** Promote the work of the Law School Board of Overseers, the Law School Business Advisory Council, and the Law School Alumni Board and Alumni Assembly, encouraging their appropriate engagement in and support for the fulfillment of the Law School's mission; expand the Law School's networks among individuals, law firms, corporations, and foundations;
- **Partnerships:** Promote collaboration and interdisciplinary partnerships among the Law School and the other schools at Boston College;
- **Resources:** Develop the resources essential to furthering the Law School's mission through active involvement in fundraising and the "Light the World" campaign in support of scholarship, teaching, and clinical excellence. (For additional details, see p. 13.)

The Dean of the Law School reports to the Provost. Reporting to the Dean are the

- Associate Deans for Academic Affairs;
- Associate Dean for Finance and Administration;
- Associate Dean for Institutional Advancement;
- Associate Dean for Library and Technology Services; and
- Associate Dean for Students

The Law School's organization chart can be found in Appendix A.

The Dean also works closely with a wide range of others, including deans of the other schools; University Advancement; and the leaders of major law firms.

OPPORTUNITIES AND CHALLENGES FOR THE DEAN OF THE LAW SCHOOL

The new Dean will have the opportunity to shepherd a highly respected law school through the next phase of its development to prepare lawyers for practice in an increasingly complex and global legal environment. He or she should have the skills and desire to address the following opportunities and challenges:

Leadership: Of the Law School: The Dean should be comfortable with the collaborative nature of an academic institution, leading the Law School and its constituencies by communicating a clear and compelling vision for excellence in programs and people. The Dean must have the ability to inspire mutual support and trust across constituencies. Working closely with the Provost and the Law School faculty, the Dean will refine, define, and articulate the central ideas that undergird the Law School's strategic plan and determine how to make a rapid transition from strategic thinking to implementation.

Leadership: Generating Enthusiasm and a Compelling Case for Support: As the leader of--and principal spokesperson for--the Law School, the Dean should have a strong desire and ability to communicate to external audiences the Law School's compelling vision, strengths, and needs, and should have the personal skills to shape an inclusive process that generates enthusiasm and necessary support for the Law School and its strategic plan, particularly in the context of Boston College's ongoing campaign.

Leadership: Expanding the Law School's Impact: As a part of implementing the Law School's strategic vision, the Dean should lead in the creation and strengthening of relationships and partnerships within the University, as well as the Boston, state, national, and international legal communities.



QUALIFICATIONS AND CHARACTERISTICS OF BOSTON COLLEGE LAW SCHOOL'S NEXT DEAN

The ideal candidate for Dean of the Boston College Law School will possess and be able to demonstrate the following professional qualifications and personal characteristics:

Outstanding record of scholarship and teaching or legal service: A nationally known legal scholar or member of the legal profession, with a J.D. degree and recognition as a leader in legal education or the legal profession; ability to serve as an example--by virtue of rigor, caliber of experience, and personal and professional attributes--of the leadership that befits a highly-regarded law school with continuing ambitions.

Leadership and personal style: A reputation as a consensus builder who can foster collegiality, resolve conflict, and advance an agenda with widespread support, while also demonstrating intellectual independence; stature, confidence, and credibility; an open-minded, transformational, and innovative style; accessible and visible leadership; an engaging, personable style of interaction with strong listening and communication skills; a high degree of personal and professional integrity and credibility; sound judgment in assessing people and opportunities and maximizing their potential; an ability to delegate; a reputation as a strong and fair negotiator.

Support for faculty: Demonstrated ability to attract, mentor, develop, and retain top-tier faculty talent; ability to inspire and motivate scholarly productivity and teaching excellence; ability to create a collegial culture in which all feel valued and included.

Resource development: Readiness to take an active role in alumni and donor relations to enhance fundraising aspirations, expand outreach efforts, and yield tangible financial results; strong fundraising and donor cultivation skills.

Networks and relationships: Evidence of the ability to build relationships and collaborations with a wide range of key constituencies including deans of major law schools and leaders in the legal profession.

Commitment to mission: Commitment to communicating the Law School's distinctive mission; furthering the Jesuit, Catholic dimensions of the Law School's mission; fostering enthusiasm for the Law School's and Boston College's commitment to service.

Leadership skills: A record of demonstrated success as a leader in a prominent law school or the legal profession; experience formulating and communicating an exciting vision for excellence in legal education in the 21st century; experience that demonstrates the ability to generate creative ideas to position the Law School for growth and enhanced quality; awareness of the changing landscape of law and legal education.

Management skills: Strong financial and operational management skills, with an approach that is flexible and results-oriented; an ability to recognize quality and capacity in employees and effectively delegate responsibility to such people; ability to prioritize

and willingness to hold oneself and others accountable with regard to commitments and goals.

Support for students: Demonstrated focus on serving students, understanding their needs and concerns, and advancing their success and satisfaction, including creating an educational community that excels in developing the qualities and skills that students will need to become successful practitioners, and instilling moral and ethical values that underlie a rational and just application of law.

Support for diversity: Demonstrated commitment to creating and fostering a diverse community, and to treating all with respect and dignity.

Information about application procedures can be found at the end of this document.

For additional information about the surrounding community, see the links provided in Appendix B.

THE UNIVERSITY CONTEXT



Originally located in Boston's South End, Boston College has grown from a faculty of three and enrollment of 22 students, to a university with 760 full-time faculty and an enrollment of more than 14,700 students from cultures that span the globe.

Founded by the Society of Jesus in 1863, Boston College is one of 28 Jesuit colleges and universities in the United States. Boston College is committed to the highest standards of teaching and research and to the pursuit of a just society. Among its hallmarks is its focus on the development of the whole person--intellectually, socially, and spiritually. Boston College seeks both to advance its place among the nation's finest universities and to represent in higher education the Catholic intellectual ideal of a mutually illuminating relationship between religious faith and intellectual inquiry. In the past 35 years it has emerged as a national university and has been consistently ranked among the top 40 national universities in *U.S. News and World Report* rankings.

Boston College is composed of the College and Graduate School of Arts & Sciences and six professional schools: the Law School, the Lynch School of Education, the Carroll School of Management, the Connell School of Nursing, the Graduate School of Social Work, and the School of Theology and Ministry. The Woods College of Advancing Studies serves part-time undergraduate and graduate students. Annually, Boston College

awards approximately 2,300 undergraduate degrees and 1,500 graduate and professional degrees.

During the past two decades, Boston College has experienced substantial growth, with emphasis on improving the quality of students, faculty, information resources, programs, and facilities. In the next decade, Boston College intends to establish an even stronger international presence and influence.

Boston College has a strong financial profile. The operating budget for 2010-11 is \$808 million. The endowment is \$1.6 billion.

Boston College today is led by William P. Leahy, S.J., President, and Cutberto Garza, Provost and Dean of Faculties. Biographical information can be found in Appendix C.

BOSTON COLLEGE STRATEGIC PLAN

Excellence, Distinction, Leadership: Boston College in the 21st Century

A series of major planning efforts have been at the center of Boston College's development in the past 30 years. Strategic planning began in 2003, and a plan was approved in 2006 by the Board of Trustees. This plan, *Excellence, Distinction, Leadership: Boston College in the 21st Century*, establishes seven strategic directions, including a commitment to "[b]uild on the strengths and reputations of Boston College professional schools to enhance their leadership potential" and to "[b]ecome a significant intellectual and cultural crossroads by leveraging Boston College's international resources and partnerships and its Jesuit and Catholic networks." Together, these seven directions are intended to comprise a comprehensive, University-wide strategy aimed at making Boston College stronger in every respect. The strategic plan can be found at <http://www.bc.edu/sites/strategic-plan/home.html>.

BOSTON COLLEGE LAW SCHOOL

Boston College Law School is among the most selective in the nation. The 260 men and women who earn the J.D. degree from the Law School each year are as well versed in courtroom procedure as they are in legal history, as well prepared to practice law as they are to discuss its theoretical underpinnings. By graduation, many have had extensive experience researching and arguing cases through programs such as the Criminal



Justice Clinic, the Attorney General's office, or other clinical programs, and in advocacy competitions and classroom simulations. But for them, neither zealous advocacy nor the exercise of legal scholarship is an end in itself.

Mission Statement

Boston College Law School is committed to the highest quality integrated graduate and professional education, recognizing its obligations as a national law school both to the academic and to the professional worlds. Our commitment is to foster new insights through research and scholarship, to impart knowledge and analytical skills through instruction of the highest caliber, and to critically evaluate the role of law and legal institutions. We are also committed to developing those qualities and skills that our students will need to become successful practitioners; toward this end, we search for ways to combine theory and practice in our instruction, and for opportunities to instill in our students the moral and ethical values that underlie a rational and just application of law.

Boston College and its law school are rooted in the Jesuit tradition of service to God and others. In that tradition, we believe that the purpose of higher education is both the search for knowledge, and the preparation of women and men who are moved to a constructive, responsible, and loving use of their knowledge. The Law School recognizes its commitment to social and economic justice, and strives to advance this commitment both through its curricular offerings and in the extracurricular projects that it supports. We encourage our students to develop their own individual commitment to others and to explore those themes which are central to the Jesuit tradition: the dignity of the human person, the advancement of the common good and compassion for the poor. We seek to train a diverse student body not merely to be good lawyers, but to be lawyers who lead good lives, and who will be prepared to seek and to find meaningful work in service to others that will enrich their communities.

We stand out nationally among other law schools because we respect and are concerned for each individual. We strive to reflect the world's rich diversity and work together to create a community of growth and learning. We believe that such a diverse, supportive community provides the best possible environment for instruction and learning. At least as importantly, it represents the model for the types of intellectual and professional interaction that we hope to instill in our alumnae and alumni who are engaged in the practice of law.

History

Boston College Law School was founded in 1929. Its first Dean, Dennis Dooley, envisioned a law school with a social conscience and an analytical mind. From its earliest days, Boston College Law School had a reputation for toughness and high standards. Its quest for academic excellence was shaped by a desire to educate lawyers who worked for social justice and reform.

More than seven decades have seen much change since Dean Dooley led the Law School, but it holds fast to his vision. Boston College Law School places a great deal of emphasis on the practical professional skills that every good lawyer must possess as well as the theoretical framework in which the legal system operates. Those skills are transmitted within a framework of justice and public service that make the study and practice of law a calling for those who come to Boston College.



Faculty and Administration



Boston College Law School faculty and administrators are authors of casebooks, other major academic books, and articles published in the country's leading law reviews. Twelve faculty are members of the American Law Institute. Faculty have served as Special Advisor to the Organization for Economic Cooperation and Development, Reporter to the Committee on Rules of Practice and Procedure for the Judicial Conference of the United States,

President of the Legal Writing Institute, Chief of Occupational and Environmental Medicine at Massachusetts General Hospital and at Brigham and Women's Hospital, President of the Association of American Law Schools (AALS), Chief Justice of the Massachusetts Supreme Judicial Court, and Chair of the Massachusetts State Ethics Commission.

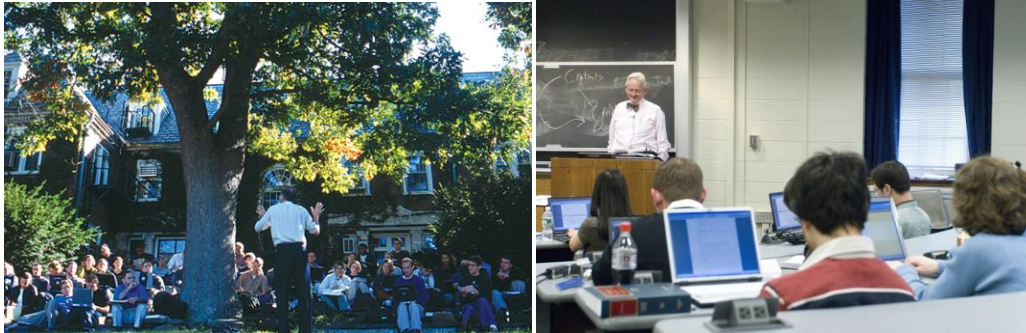
As teachers, Boston College Law School faculty consistently receive some of the highest evaluations in the University. They are accomplished scholars who mentor and teach.

Students

The distinctive mission and character of Boston College Law School attracts students who are at once highly credentialed and highly collegial in their relationships with each other and with the faculty. That sense of community springs from a shared respect for the law as the cornerstone of a democratic society, and for one another as legal scholars. It manifests itself in dozens of ways. It is seen in the mentoring relationships that grow out of the easy accessibility students enjoy with faculty. It is found in the numerous student organizations that offer opportunities to wrestle with and affect



basic issues touched by the law every day. It is evident in the camaraderie of informal and formal social activities that bring together this diverse community. Perhaps most intensely, it is alive in the small and self-forming groups in which students join in a shared passion for the power, elegance, and dynamism of the law.



Boston College Law School has over 40 active student organizations. These organizations include affinity groups (Asian Pacific American Law Students Association, Black Law Students Association, Latin American Law Students Association, Native American Law Students Association, South Asian Law Students Association), faith based groups (Christian Legal Society, St. Thomas More Society, Jewish Law Students Association, Muslim Law Students Association), as well as groups focused on specific areas of law (Business Law Society, Environmental Law Society, Litigation and Advocacy Society). These groups provide a wide variety of programming throughout the academic year: social events, brown bag lunches with faculty and alumni, and events with guest speakers. As would be expected at a Jesuit law school, service is an important focus of several of these groups. For example, the Gulf Coast Recovery Group sends students to Louisiana over spring break to provide legal services; the Veterans Association organizes monthly service trips to the Homeless Veterans Shelter in downtown Boston; and other organizations run clothing and food drives throughout the year.

Accreditation and Strategic Planning

The Law School is currently preparing for an ABA/AALS accreditation review. Self-study committee drafts should be completed by summer 2011, with a report prepared during the fall semester and a faculty vote on the document before the winter break. The site team is scheduled to visit in spring 2012.



Strategic planning is a focus of attention in fall 2010. The previous strategic plan, completed in 2005, focused on answering the question, "What would it take to be the very best?" Substantial effort was devoted to striving for greater quality and recognition, and progress has been made. Pursuing even

greater quality is likely to continue to be the focus in the current planning process. Progress toward goals set in 2005 include the following:

- **Creation of an LL.M. Program:** The LL.M. program, which began in 2007, draws students from across the globe and seeks to immerse them in the intricacies and flavor of the United States legal system, and help prepare them for the challenges of work in an increasingly global legal community. In return, these students, who in 2010-11 come from 14 countries, provide distinctive perspectives that enhance the learning experience for all on campus.
- **Affordability Initiative:** This initiative sought to increase endowed scholarship funds for need-based support and for academic scholarships. Fundraising in support of this mission exceeded its targets. To date, the Law School has raised \$8.45 million for scholarship funds (exceeding a \$5.5 million target) and has raised \$4.45 million for the loan repayment assistance program (exceeding a \$3.5 million target), which supports recent Boston College Law School graduates in law-related public interest careers by assisting them in the repayment of their educational debt.
- **Center for Human Rights and International Justice:** Through multidisciplinary training programs, applied research, and the interaction of scholars with practitioners, the Center, established in 2005, aims to nurture a new generation of scholars and practitioners in the United States and abroad who draw upon the strengths of many disciplines, and the wisdom of rigorous ethical training, in the attainment of human rights and international justice. Among the Center's active projects is the Post-Deportation Human Rights Project, which supports empirical and legal research, legal representation, and community outreach and public policy.
- **Emerging Enterprise and Business Law Program:** This program pursues a combined curricular and research agenda for understanding, examining, and supporting emerging enterprises. On the curricular side, the Law School offers a central course--Advising the Business Planner--to reflect the close intersection of law and business, and has continued to expand business law and intellectual property courses of interest to emerging businesses. The new Community Enterprise Clinic enables students to represent low- and moderate-income entrepreneurs, small businesses, and nonprofits. The mission of the Clinic is to support economic progress in under-resourced neighborhoods, and to offer a vibrant educational experience to students interested in business law, transactional work, and community economic development. On the research side, the Law School actively participates and hosts the Boston Intellectual Property Colloquium Series, and sponsors regular symposia (such as a 2009 symposium on intellectual property law).

Clinical Programs

Boston College Law School is widely regarded as having one of the best clinical curricula in the country in a wide range of practice areas, enabling students to perform legal work in civil litigation, criminal justice, juvenile rights, immigration law, issues

affecting women, government practice, community development, the prevention of homelessness, the judiciary, and many other individually selected areas, along with programs permitting students to practice law in London and The Hague. The faculty includes some of the strongest, most experienced clinical teachers, supervisors, and scholars in the nation.

Special Programs

- **Joint Degrees:** Boston College Law School offers several dual degree program options including: J.D./M.B.A., J.D./M.S.W., J.D./M.Ed., and J.D./M.A. or J.D./Ph.D. in Philosophy. Other dual degree programs--such as J.D./M.A. in History and J.D./M.A. in Slavic Studies--have been arranged in the past on a case-by-case basis. In addition, Boston College Law School is now offering a J.D./M.A. in Environmental Urban Planning in conjunction with Tufts University. Students are also able to obtain a J.D. from Boston College Law School and a M.A. in International Foreign Diplomacy from the Fletcher School at Tufts University in four rather than five years.
- **LL.M.:** The LL.M. program is a one-year degree program designed primarily for lawyers trained in other countries. Students design their own program of study, taking courses and seminars in the regular Law School curriculum. The program is informed by two central ideas. First, the presence of international LL.M. students in the Law School community--both inside and outside the classroom--enriches understanding of international legal norms and the U.S. legal system. Second, by bringing lawyers from other countries to campus for a year, Boston College can bring ideas about social justice and public service--ideas that are central to the University's educational philosophy--to a world stage.

In the LL.M. program's four years of existence, it has enrolled a total of 45 students from 26 countries on five continents. The class of 2010-11, for example, consists of lawyers from Argentina, Brazil, England, Ghana, Indonesia, and Mexico; a notarial candidate from France; a consultant to the Italian government on legislative simplification; human rights lawyers from Iran, Kenya, and the Netherlands; and recent law school graduates from China, France, India, and Northern Ireland. Most LL.M. graduates ultimately return to their home countries, resuming their previous employment or securing new employment that draws on their new knowledge and skills. A significant proportion, however, spend additional time in the U.S. before doing so, whether in paid employment, an unpaid internship, or further study.

Law Library

The Law Library's collection currently stands at 481,235 volumes and volume equivalents. The Library subscribes to numerous online and paper journals and databases, most of which members of the community can access from their personal computers. The current library book budget for 2010-11 is \$1.45 million with a total budget (including salaries) of \$3.15 million. The Law Library's staff is currently organized into four work units: Access & Organization, Administrative & Technology Resources, Collections & Acquisitions, and Education & Reference.



A highlight of the Law Library is the Daniel R. Coquillette Rare Book Room, which houses the Library's special collections. The room houses and displays rare books and manuscripts. It is popular as a quiet study space and serves as a venue for programs and events, including the Boston College Law School's Legal History Roundtable. Currently, the Library's special collections consist of about 1,500 rare English, American, and Roman law books. Also in the collection are about 4,000 documents and manuscripts, mostly early American.

The Law Library is an administrative unit within the Law School, separate from the Boston College Libraries, which include the Thomas P. O'Neill Library (the main research library at BC), the Bapst Art Library, the John J. Burns Library of Rare Books and Special Collections, the Educational Resource Center, the Social Work Library, the Theology and Ministry Library, and the Catherine O'Connor Library (located at Weston Observatory in Weston, Massachusetts). In the last 20 years, the number of volumes in the Boston College Libraries has doubled, with a total volume count of over 2 million. Law faculty and students have access to all of the Boston College Libraries. The University system is a member of the Association of Research Libraries.

In addition, the Law Library serves the community through its memberships in the Boston Library Consortium, the New England Law Library Consortium, the Legal Information Preservation Alliance, and the Conference of Law Libraries of the Association of Jesuit Colleges and Universities.

Advisory Groups

The Law School has several external groups with which it works in close partnership.

- The Law School's Board of Overseers, with about 75 members, assists the Dean and the President of Boston College in ensuring the continued strength and vitality of Boston College Law School. Members, including alumni and non-alumni, are invited to serve by the Dean. Board members provide advice, counsel, and active

involvement, and play a leading role in securing essential private philanthropic support.

- The Business Advisory Council for the Law School, with about 70 members, fosters the School's development by providing advice on the curricula in the context of the business environment, and by supporting the Dean in securing financial support for the School.
- The 15-member Alumni Board provides leadership for the 12,000-member Alumni Association and for the Alumni Assembly, which is made up of approximately 700 alumni who have volunteered in some way for the Law School in the past fiscal year. Activities include supporting Career Services, building links with and providing support for current students, and developing alumni chapters, reunions and other programs.

RESOURCE DEVELOPMENT



Boston College Law School seeks support primarily from its alumni and related organizations, such as firms that employ significant numbers of Law School graduates or are led by Law School alumni. In conjunction with Boston College's "Light the World" campaign, the Law School has set for itself a target of securing \$50 million, primarily for faculty professorships and research support, student scholarships, and loan repayment assistance. To date, campaign commitments total approximately \$23 million.

The Boston College Law School Fund is the annual giving effort of the Law School. In 2010, cash gifts to the Fund totaled \$1.79 million and averaged \$1.8 million over the prior three fiscal years. Law School alumni participation has been approximately 22 percent in recent years and is expected to increase in coming years.

The primary leadership groups through which prospective Law School donors are engaged are the Alumni Board, the Board of Overseers, and the Business Advisory Council. These groups include many who are the leaders in philanthropy to the Law School, and they are extensively engaged with the dean, faculty, and senior leadership of the Law School.

BOSTON COLLEGE LAW SCHOOL BY THE NUMBERS

1. Boston College Law School highlights:

- Top 30 law school (*US News & World Report*)
- Top 10 for career prospects (*Princeton Review*)
- Top 10 for best professors (*Princeton Review*)
- Top 20 ranking in the Law School 100 list
- Top 20 most selective law schools in the country (*US News & World Report*)
- Top 20 legal writing (*US News & World Report*)
- Top 20 tax program (*US News & World Report*)
- Top 15 schools where big law firms recruit (*National Law Journal*)
- Consistently ranked among the most collegial law schools (*US News & World Report*)
- #1 for producing the most 'Super Lawyers' in New England (*Super Lawyer Magazine*)

2. Student Body, 2010-11

Total Enrollment.....	817
Male.....	53%
Female.....	47%
Students of Color.....	22%
International.....	2%

3. Faculty, 2010-11

Total Faculty.....	130
Full time.....	59
Adjunct.....	66
Visiting.....	5

4. Fall 2010 Entering Class

Number of applicants.....	6,942
Enrolled students.....	261
Median LSAT	166
Median GPA	3.61
Languages represented.....	23
Countries represented.....	21
States represented.....	25 and District of Columbia
Undergraduate colleges/universities represented.....	114
Undergraduate majors represented.....	47
Average Age.....	24

5. Additional information

Tuition, 2010-11 Academic Year.....	\$40,770
Student/Faculty Ratio.....	13.2:1
Graduates Employed.....	97.6%
Median Starting Salary Private Sector.....	\$160,000
Median Starting Salary Public Sector.....	\$35,000
Median Starting Salary Government.....	\$57,000

PROCEDURE FOR CANDIDACY

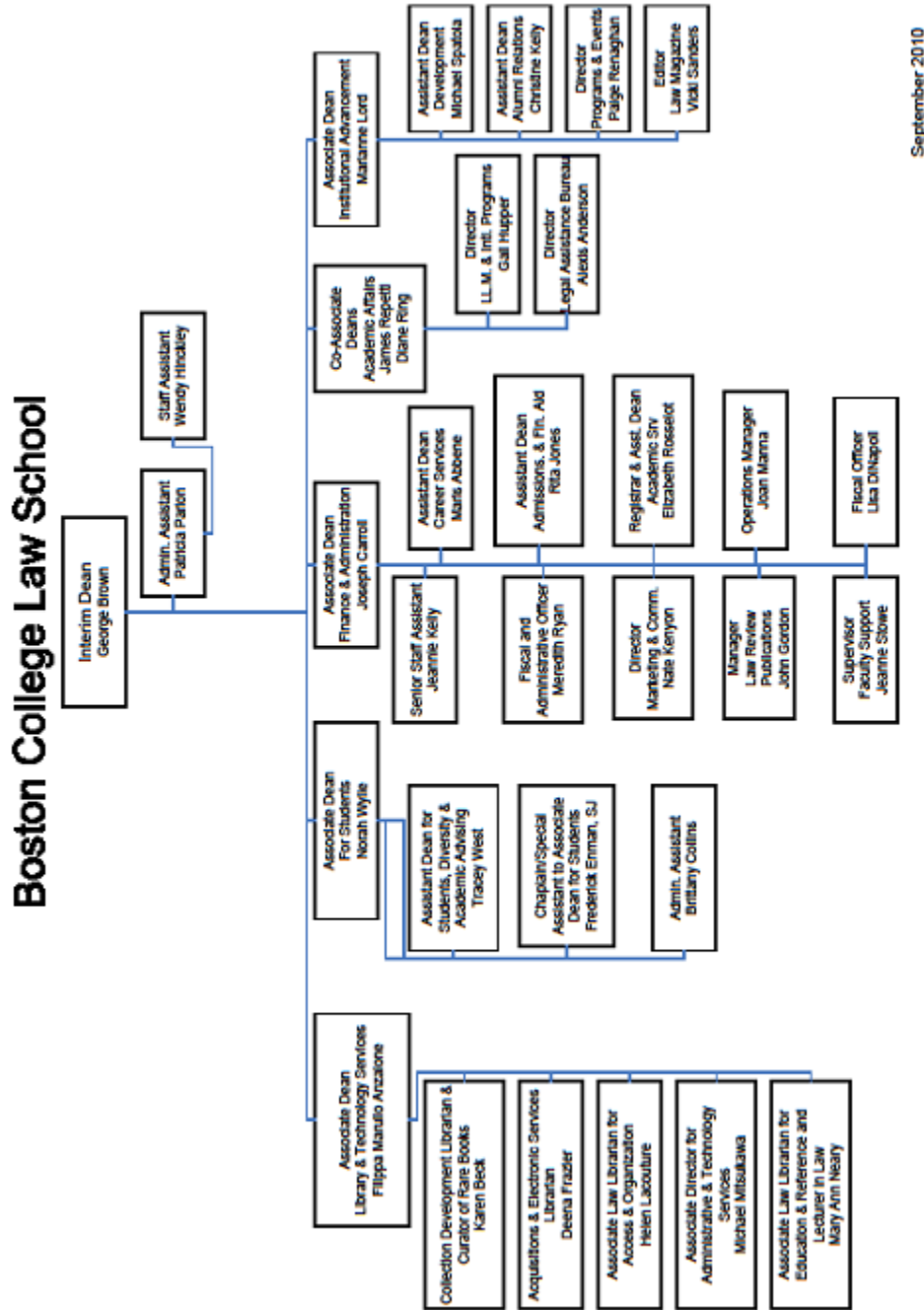
Confidential review of applications will begin immediately and continue until the position is filled. Applications should include a *curriculum vitae*, a statement of application, and names and contact information of five references. Candidates will be notified before references are contacted. Materials should be submitted electronically to BCLaw@wittkiewfer.com. Documents that must be mailed may be sent to Witt/Kieffer, 2015 Spring Road, Suite 510, Oak Brook, IL 60523, the executive search firm assisting with this search. Confidential inquiries and questions may be directed to the Witt/Kieffer consultants--Jean Dowdall, Ph.D., Thomas Jackson, J.D., and Sheila Murphy--at (630) 575-6131.

Boston College is an Affirmative Action/Equal Opportunity Employer.

A Successful Tradition: www.bc.edu/bcjobs



APPENDIX A: Boston College Law School Organizational Chart



September 2010

APPENDIX B: The Community

Boston:

The City of Boston, founded in 1630, is the largest metropolis in New England, and is among America's most vital cities--a center of finance, education and research, and art and culture.

www.bc.edu/about/boston.html

www.cityofboston.gov

For information about current news and events in the city, go to www.boston.com.

Newton:

Newton, home of the Boston College Law School, is located six miles west of Boston.

www.ci.newton.ma.us/

APPENDIX C: Biographies of the President and Provost of Boston College

William P. Leahy of the Wisconsin Province of the Society of Jesus became the 25th President of Boston College in July 1996. Coming to Boston College from Marquette University, where he served for five years as executive vice president, Fr. Leahy brought to his position a diverse background as a university administrator and as a scholar in 20th century American social and religious history. Fr. Leahy holds a Ph.D. in history from Stanford University, a M.A. in U.S. History from St. Louis University, and a master's degree in divinity and sacred theology from the Jesuit School of Theology in Berkeley, California. He is the author of *Adapting to America: Catholics, Jesuits and Higher Education in the Twentieth Century*, as well as numerous scholarly articles on religious and educational history in the United States.

Cutberto Garza joined Boston College in 2005. Previous to 2005 he held the rank of full professor at Baylor College of Medicine and Cornell University. He received his B.S. from Baylor University, his M.D. from Baylor College of Medicine, and a Ph.D. in nutrition and food science from MIT. Dr. Garza is a specialist in pediatric nutrition and has worked on projects sponsored by the World Health Organization, UNICEF, and other organizations related to infant and young child growth. He is a member of the Institute of Medicine, one of the three branches of the National Academies of Science, and was named to the inaugural class of the National Associates of the National Academies of Science. He also is a member of the American Society of Clinical Nutrition, the Society for Pediatric Research and the American Pediatric Society, among other organizations.