

# Interactive Visualization:

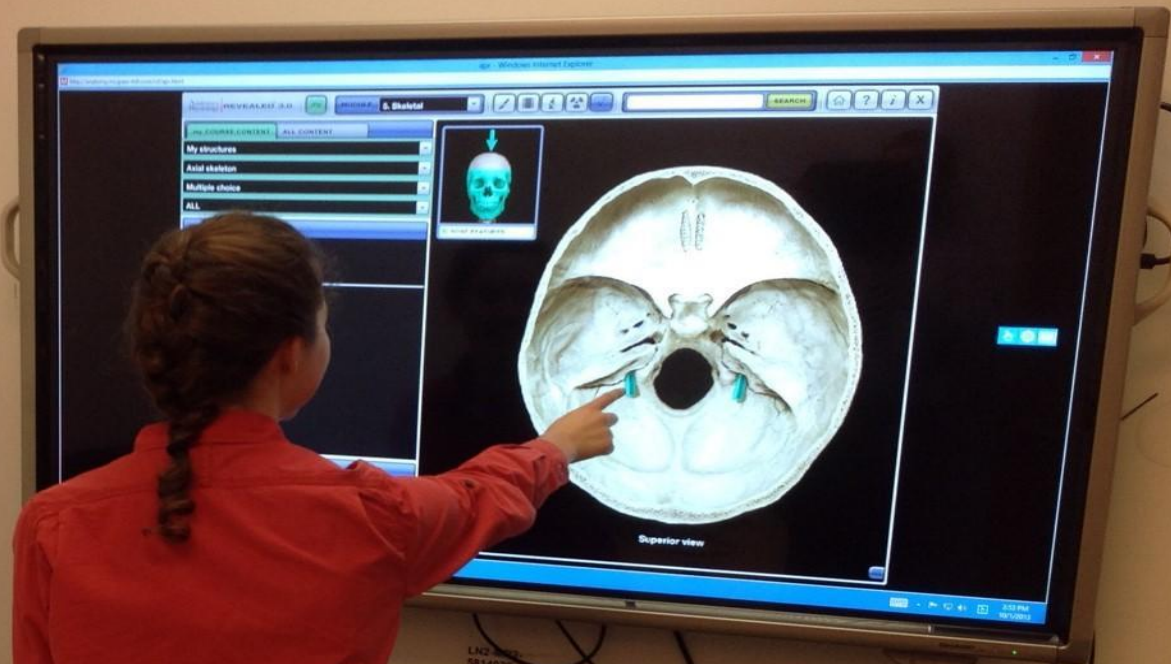
Video Walls for Collaborative Research and Discovery

## A Snapshot of CURVE

DLF Forum | 10.29.2014













# CINEMASSIVE

Exit

Save

### Wall Control

On

Off

Close All

### Presets

Preset 1

Preset 2

Preset 3

Preset 4

Preset 5

Preset 6

Preset 7

Touch PC

Touch Mac

### Custom Presets

Custom 1

Custom 2

Custom 3

### Fixed Preset 8

Touch PC 1

Touch PC 2

Touch PC 3

### Source Volume

Close Mic Pop-Up

@

Mic 1	Mic 2	Touch PC	Touch Mac	BYOD Audio
@	@	@	@	@

Mac #3

Work Sta #1

Unused

Unused

### KVM Switch

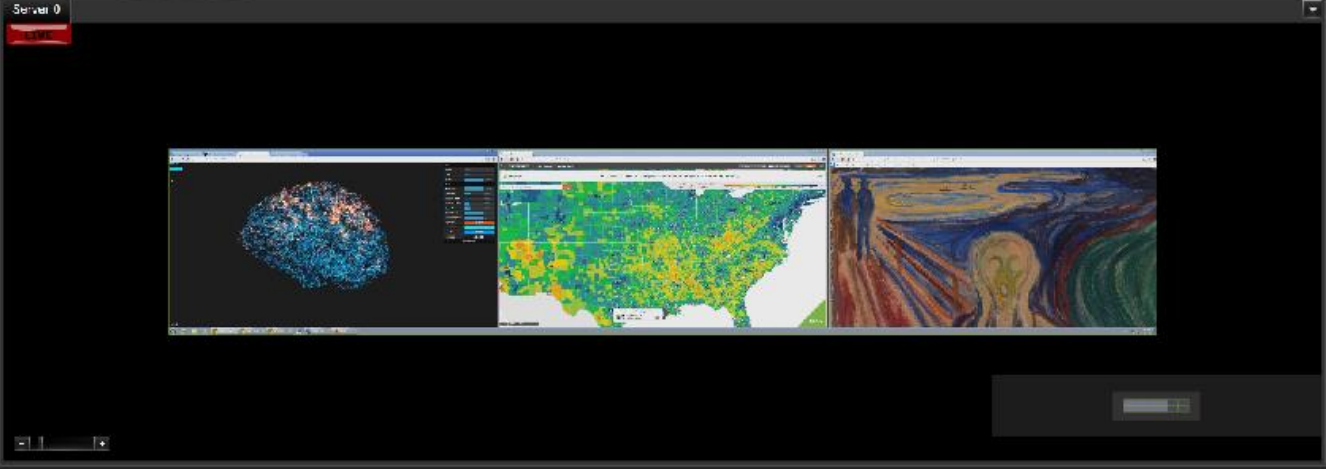
PC

Mac

Touch

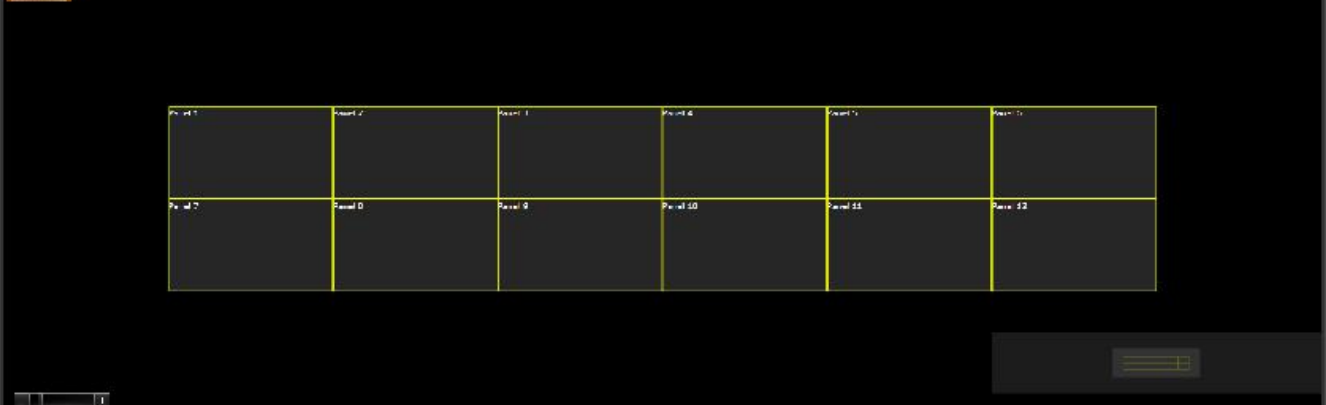
H1 1K Workstation  
Touch Mac  
Touch PC

- 1in0: DVE PC Output 1
  - 1in3: DVE PC Output 2
  - 1in4: DVE PC Output 3
- BYOD  
Group 5



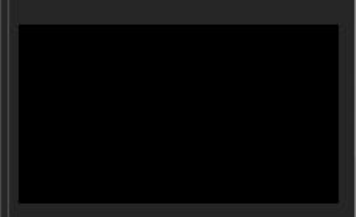
Preview Clear

Server 0



Properties Presets

SOURCE PROFILES  
1in0: DVE PC Output 1



Brightness: 52 Contrast: 128  
Hue: 128 Saturation: 128  
Phase: 0 Black Level: 8  
H Position: 80 V Position: 15  
Width: 1920 Height: 1080

Capture Format  
Automatic YUY2  
5 5 5 5 6 5 8 8 8  
Scaling  
Default High Quality  
Dinterlacing  
Auto Winos New (target: 1:1)

Reset







### **Collaborative Workstations:**

5 PCs: 12 processor cores, 500 GB SSD, 128 GB RAM, 1GB NVIDIA Quadro K600 or 4GB NVIDIA Quadro K5000 graphics cards

2 Mac Pros: 6 processor cores, 1 TB hard drive, 32 GB RAM, Dual AMD FirePro D500 graphics processors with 3GB of GDDR5 VRAM each

## Infrastructural Improvements

**Top Three Infrastructure Improvements**

Improvement	Percentage
Emergency call boxes	36.1%
Controversial bathroom	47.2%
Grass area	79%

- 79% of participants want a grass area
- 47.2% want a controversial bathroom
- 36.1% want emergency call boxes

*"I just wish they would do more with the trails... clean them up, get rid of the dead branches and dead trees that are around... clean off the dirt, at least make it more walkable and maybe put a ledge over it"*  
 -- African-American female from SW Atlanta

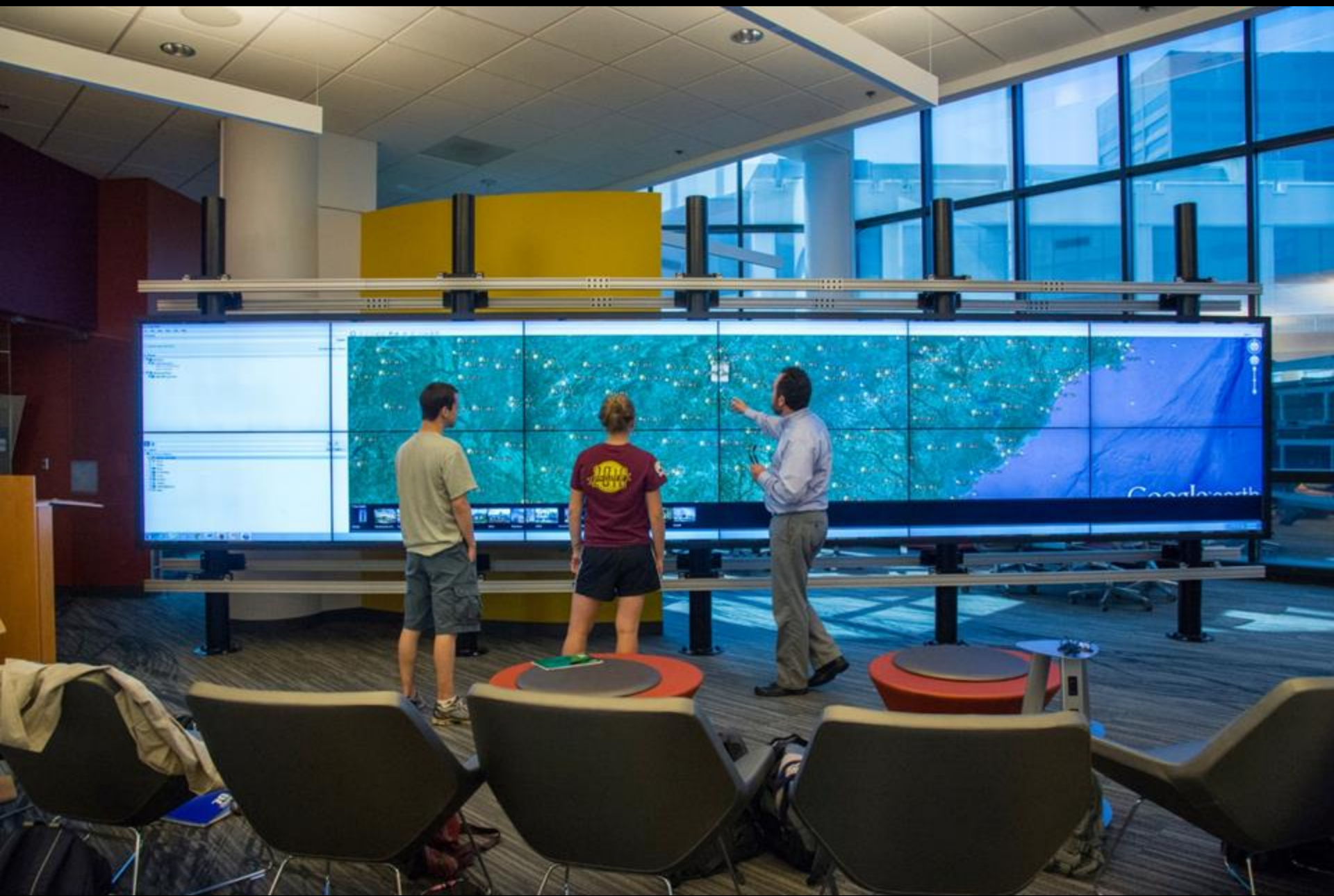
*"You want it to be rustic--what you put up. You want it to be something that looks like it's in the middle of a nature preserve. And some wood walls."*  
 -- African-American female from SW Atlanta

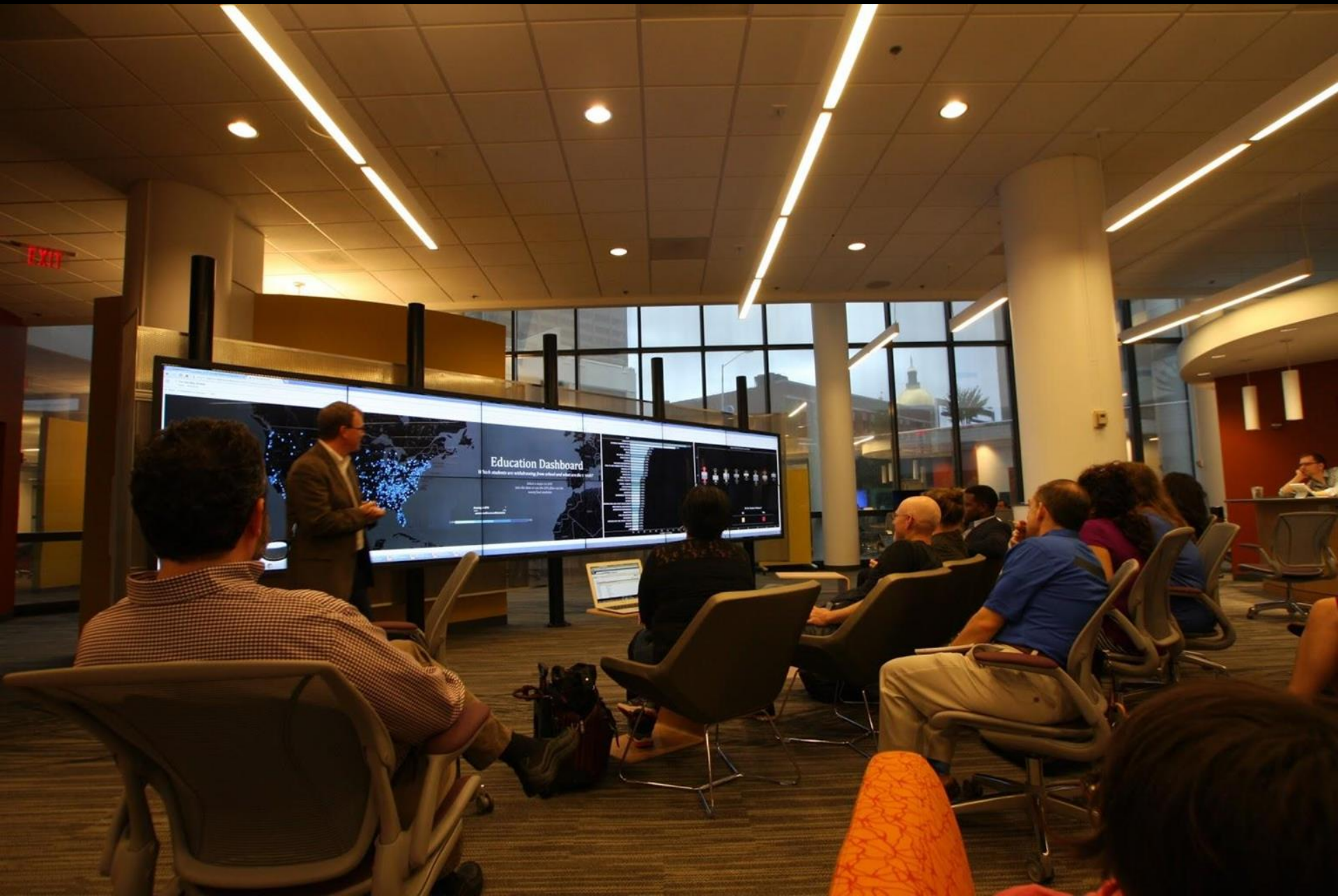
*"It needs a little poison ivy control, it needs signage, it needs maps, and it needs some history markers to, like, show people why it's such an important place... and maybe a little bit larger hours"*  
 -- African-American male from SW Atlanta



### CASCADE SPRINGS NATURE PRESERVE







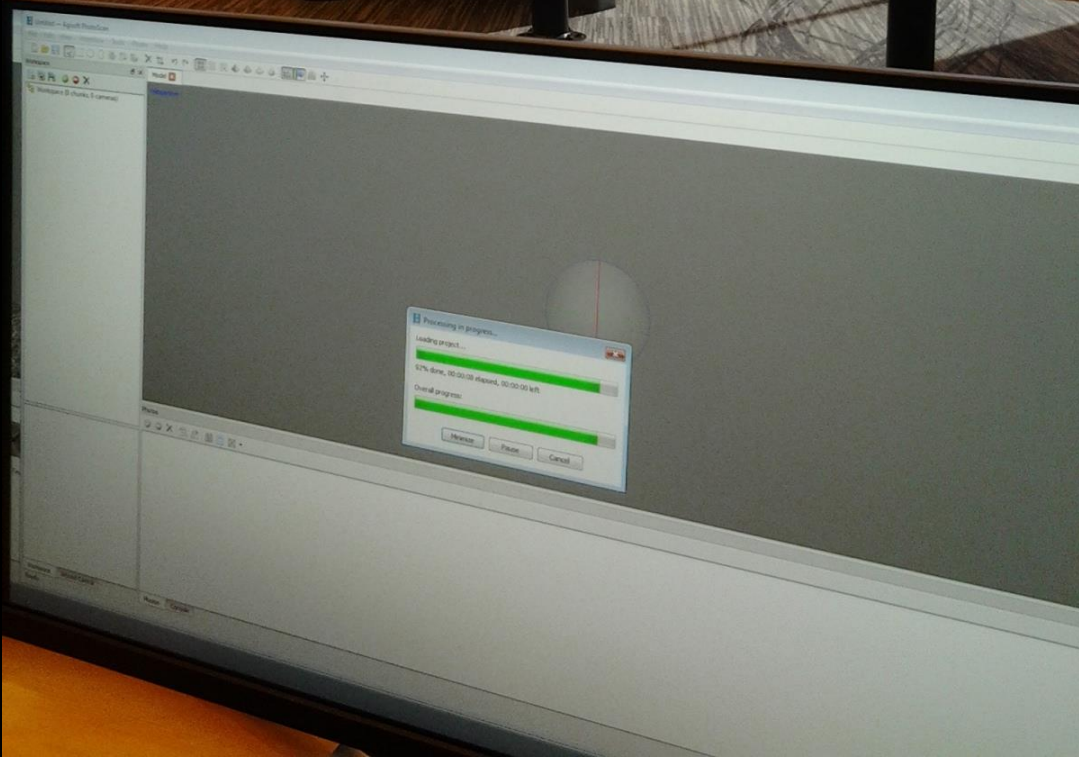
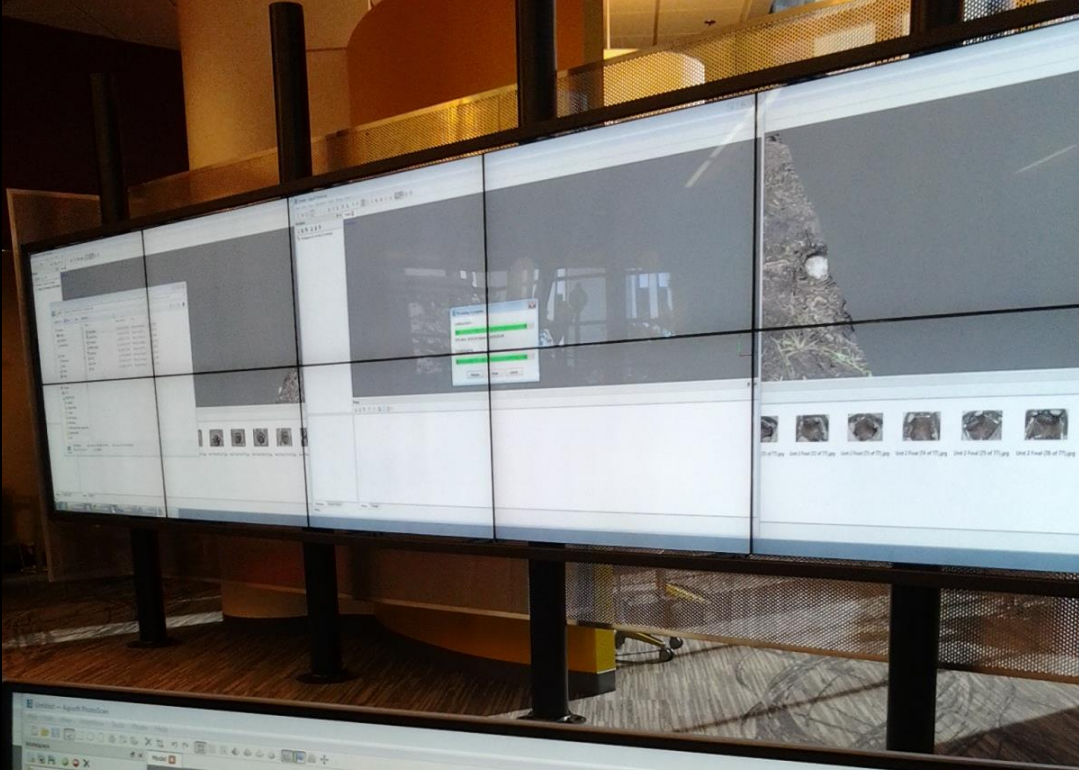




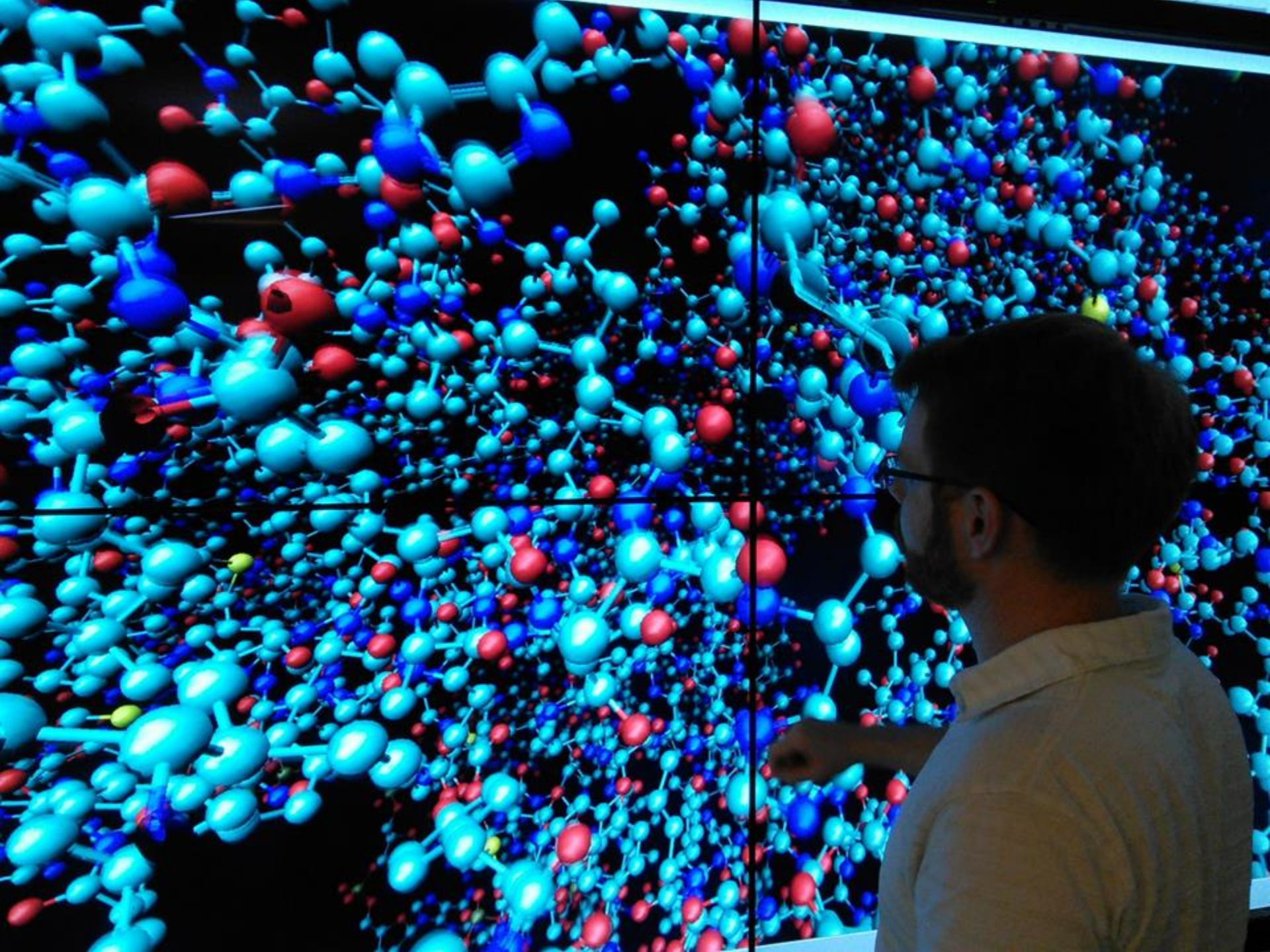


















# Thanks,

## **CURVE Core Design Team**

**Krista Graham**, Head, Digital Library Services, [kgraham13@gsu.edu](mailto:kgraham13@gsu.edu)

**Khyle Hannan**, Library Facilities Coordinator, [khannan1@gsu.edu](mailto:khannan1@gsu.edu)

**Joseph Hurley**, Interim Director, CURVE, [jhurley@gsu.edu](mailto:jhurley@gsu.edu)

**Bryan Sinclair**, Associate Dean, Project Leader, [bsinclair@gsu.edu](mailto:bsinclair@gsu.edu)

## **Visit Us**

<http://curve.gsu.edu> (Main)

<http://bit.ly/curvegsu> (Design & Planning)

