

Georgia State University ScholarWorks @ Georgia State University

University Library Stall Times

University Library Publications

1-2010

January/February 2010

Stall Times

Follow this and additional works at: https://scholarworks.gsu.edu/univ_lib_stalltimes



Part of the [Library and Information Science Commons](#)

Recommended Citation

Stall Times, "January/February 2010" (2010). *University Library Stall Times*. 20.
https://scholarworks.gsu.edu/univ_lib_stalltimes/20

This Newsletter is brought to you for free and open access by the University Library Publications at ScholarWorks @ Georgia State University. It has been accepted for inclusion in University Library Stall Times by an authorized administrator of ScholarWorks @ Georgia State University. For more information, please contact scholarworks@gsu.edu.

YOUR NUMBER'S UP. TIME TO GET IT DOWN!

To increase the security of your Georgia State University Library account, the statewide University System of Georgia will soon require that all library users enter a new PIN for account access. **Without this PIN, you will be unable to access your library account, renew books online, get your GALILEO password or check your fines, due dates and requests.** Instructions are on our PIN FAQ page at library.gsu.edu/pins to help you get your PIN and use it to access your account.

Remember: without 1) a university e-mail address, 2) a PIN and 3) a PantherCard, you will be unable to access your account! Please obtain all three before trying to renew books online or check on other information within your account.

RESOURCES ON ISLAM

Interested in writing a paper about Islamic culture this semester? The Georgia State University Library has several excellent resources to begin your research with, including: *The Oxford Encyclopedia of the Islamic World* (6 volumes), *The Grove Encyclopedia of Islamic Art and Architecture* (3 volumes), and the eBook *The Encyclopedia of Islam*. You can find all of these resources by searching our online catalog. In addition, don't forget that you can access **ARTstor** through our databases, to research over one million images from museums, archives and photographers! The image to the right is from **ARTstor** and is a portrait of Islam Khan Mashhadi by Payag from the 17th century, provided generously by the Metropolitan Museum of Art.

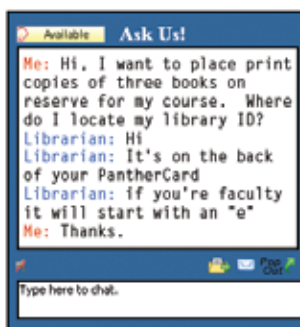


RESEARCH ANYWHERE YOU WANT

Not everyone writes papers in the library, so why should you have to be at the library to get work done? With our Virtual Reference service, you can get research assistance from anywhere: home, work, outdoors or even your local coffee hangout.

We have accounts with AIM, MSN, Yahoo and Google. Our buddy name on these is **gsulibref** and we're available to chat with you Monday – Thursday, 10 am – 10 pm and Fridays, 10 am – 8 pm.

Don't have an IM account? You can still chat live with a librarian through the library's homepage; just click the **Ask a Librarian** link.



Over 1.5 million people come through the Georgia State University Library's doors each year. Coincidentally, the library houses over 1.5 million items in its collection. There's something here for everyone!

The library provides the university with access to extensive information resources; assistance with research; state-of-the-art computer stations; and a comfortable space to meet, learn and relax.

GRADUATE STUDENT FOCUS GROUPS

The library is interested in finding out how graduate students use the library. Grad students, please participate in a 1-hour focus group in exchange for \$5 PantherCash. Email jlink@gsu.edu to sign up.

Wednesday, February 3,
3 pm – 4 pm in Classroom 2

Friday, February 5,
3 pm – 4 pm in Classroom 2

CONTACT THE LIBRARY

404 – 413 – 2800

libref@langate.gsu.edu

library.gsu.edu

Chat: library.gsu.edu/askalibrarian

Yahoo Messenger
AOL Instant Messenger
MSN Messenger
Google Talk

Screen Name:
gsulibref

Find us on
Facebook

Sign up as our
fan on Facebook!

Comments? Questions? Email us at:
stalltimes@gsu.edu