

Georgia State University ScholarWorks @ Georgia State University

University Library Faculty Publications

Georgia State University Library

Spring 2013

Health & Sciences Librarians Newsletter

Brenna Helmstutler

Georgia State University, brenna@gsu.edu

Sharon Leslie

Georgia State University, sleslie@gsu.edu

Lesley Mackie

Georgia State University, lesley.mackie@coloradocollege.edu

Ida Martinez

Georgia State University, itmartinez@gsu.edu

Todd Prusin

Georgia State University, tprusin@gsu.edu

See next page for additional authors

Follow this and additional works at: https://scholarworks.gsu.edu/univ_lib_facpub

 Part of the [Library and Information Science Commons](#), and the [Medicine and Health Sciences Commons](#)

Recommended Citation

Helmstutler, Brenna; Leslie, Sharon; Mackie, Lesley; Martinez, Ida; Prusin, Todd; and Werner, Jackie K., "Health & Sciences Librarians Newsletter" (2013). *University Library Faculty Publications*. 97.

https://scholarworks.gsu.edu/univ_lib_facpub/97

This Article is brought to you for free and open access by the Georgia State University Library at ScholarWorks @ Georgia State University. It has been accepted for inclusion in University Library Faculty Publications by an authorized administrator of ScholarWorks @ Georgia State University. For more information, please contact scholarworks@gsu.edu.

Authors

Brenna Helmstutler, Sharon Leslie, Lesley Mackie, Ida Martinez, Todd Prusin, and Jackie K. Werner

Is this email not displaying correctly?
[View it in your browser.](#)



HEALTH & SCIENCES

[f Friend on Facebook](#)

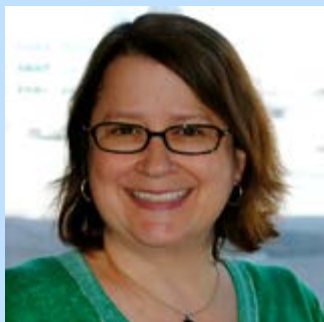
[t Follow on Twitter](#)

[✉ Forward to a Friend](#)



[Brenna Helmstutler](#)

Coordinator of Health & Sciences Team



[Sharon Leslie](#)

Librarian for Kinesiology & Health Education, Nutrition, Physical Therapy, Public Health, Respiratory Therapy



As part of the team-based structure within University Library's Public Services area, the Health & Sciences team comprised of five subject librarians was formed in 2011 in order to support GSU's 2011-2016 Strategic Plan:

Goal 3: Become a leading public research university addressing the most challenging issues of the 21st century.

Initiative 5: Enhance Georgia State's contributions to the sciences, and health and medical research and education.



PubMed Workshops

To help students gain critical research skills earlier in the semester, the Library will be offering PubMed workshops in Classroom 2 of Library North. These classes will be offered each Fall and Spring semester. Have YOU forgotten how to use MeSH? Come on down or schedule an appointment with your subject librarian. The dates are as follows:

- Monday, February 18, 3:30 pm – 4:30 pm
- Tuesday, February 19, 8:30 am – 9:30 am
- Wednesday, February 20,



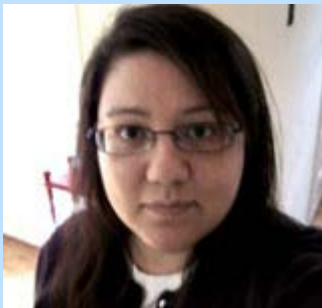
Data Management

Got a data management plan to write for your federal grant, or just want to be more organized with your data? With the [DMPTool](#), you can

- Create ready-to-use data management plans for specific funding agencies
- Meet requirements for data management plans
- Get step-by-step instructions and guidance for data management plan
- Learn about resources and services available at your institution to fulfill the data management requirements of their grants

[Lesley Mackie](#)

Librarian for Biology,
Neuroscience, Computer
Science



[Ida Martinez](#)

Librarian for Psychology



[Todd Prusin](#)

Librarian for Nursing and
Health Sciences



[Jackie Werner](#)

Librarian for Chemistry,
Mathematics & Statistics,
Physics & Astronomy

11:00 am – 12:00 pm

- Thursday, February 21,
12:00 pm – 1:00 pm
- Friday, February 22,
1:00 pm – 2:00 pm



Web of Science Workshops

Web of Science is a great research tool for information in the sciences, social sciences, arts, and humanities. It offers a unified platform that integrates all data and search terms together so that you can conduct one search to find all relevant items. Other benefits of this database are citation analysis and cover-to-cover indexing.

The Library will be hosting four workshops to assist you in learning how to use this resource. Workshops will be held:

- Monday, 4 March,
8:30am – 9:30am
- Tuesday, 5 March,
1pm-2pm
- Wednesday, 6 March,
3pm-4pm
- Thursday, 7 March,
11am -12pm

Georgia State University is a contributing institution. Just click [Get Started](#) to begin. Got questions? The Library's [Data Management Advisory Team](#) can help!



Did you know you can post your Open Access articles in the [Digital Archive @ Georgia State University?](#) The Archive is Georgia State University's Institutional Repository. It holds the scholarly output of the campus including theses and dissertations since 2005, journals, conferences, and faculty publications. Faculty from all disciplines are welcome to submit articles to our Digital Initiatives Librarian, [Sean Lind](#), for verification that posting is permitted by the publisher.

Check out these articles by [Dr. Vijay Ganji](#) of Physical Therapy, [Dr. Christine Stauber](#) of Public Health, and Drs. [Andrey Shilnikov and Gennady Cymbalyuk](#) of Physics and Astronomy.

All workshops will be held in Library Classroom 2, located on the second floor of Library North.

 AMERICAN PSYCHOLOGICAL ASSOCIATION



APA's Advanced Training Institutes

The American Psychological Association offers summer training institutes for psychologists interested in emerging science technologies, research methods, and experiential learning. Faculty, post-docs, and graduate students may apply. This year's institutes will be offered at the University of California Davis, Michigan State University, and the University of Cincinnati. Get [more information on the criteria for acceptance and the application process here](#).



Course Reserves

Many faculty take advantage of [the course reserves system](#) at the university library. Due to their limited check out



New NSF Grant Submission Rules

Planning on submitting a grant to the National Science Foundation (NSF) now or in the future? Make sure to familiarize yourself with the NSF's new rules for grant proposals, effective January 14. The Chronicle of Higher Education concisely reviews the changes in Karen M. Markin's column [Don't Underestimate NSF's New Grant-Submission Rules](#). The changes apply to four aspects of the process: the project summary; the biosketch; reporting of facilities, equipment, and other resources; and the review criteria. None of the changes are major, but correctly completing the application process could make the difference between a successful grant and one that's rejected off the bat. [Read More](#).

times, digital and print items on reserve remain available to all students. For example, nursing professors Cranwell-Bruce, Sims, Hall-Grantham and Bacon all currently reap the benefits of the reserve system. Nursing subject librarian [Todd Prusin](#) has created [Research Guides](#) to compliment these nursing classes, directing students to said reserve items. All professors are encouraged to place items on reserve and work with their subject librarian to develop course research guides.



Writing in the Sciences

Teaching a course and want some science-specific writing resources to give your students? The library's [Writing in the Sciences Research Guide](#) includes two Prezi presentations for classroom use, recommendations of books and websites, and downloadable handouts.

[follow on Twitter](#) | [friend on Facebook](#) | [forward to a friend](#)

[unsubscribe from this list](#) | [update subscription preferences](#)