

Handbook



4650 N. Port Washington Rd.
Milwaukee, WI 53212
www.artsatlargeinc.org
2008

Contributors:
Kim Abler
Ryan Hurley
Teri Sullivan

Arts @ Large would like to thank Ellen Homb and 2-Story Creative
for the design and layout of this handbook.

This handbook is made possible in part by:

The Helen Bader Foundation
Barbara Carson
Brewers Charities, Inc.
JPMorgan Chase & Co.
Greater Milwaukee Foundation Mary L. Nohl Fund
Harley-Davidson Foundation
Dorothy Inbusch Foundation
Jewish Community Foundation
MPS pARTnership for the Arts Fund
Northwestern Mutual Foundation
Jane Bradley Pettit Foundation
Kathleen Rivera
Lucy and Jack Rosenberg Philanthropic Fund
St. Charles Youth & Family Services Foundation
2-Story Creative

Wisconsin Arts Board with funds from the State of Wisconsin and the National Endowment for the Arts
Wisconsin Board for People with Developmental Disabilities

There is a passion for arts education that is sometimes hard to explain. It begins when you walk into a classroom of 1st graders, some sitting quietly, some fidgeting and you see the variety of personalities and sense that each child is capable of learning, given the opportunity to explore their own style – their own creativity.

The passion grows when you meet a visual artist keenly in touch with the value of using symbols to bring cultural exploration alive through making giant banners and masks that represent worlds far away from the central city. You see it in the eagerness of students to add their own adornment to the sculptures, putting a personal stamp on the classroom's collective piece of artwork.

The excitement grows when a teacher fully adopts the use of multi-media technology into everyday projects, helping her students tell their own stories in a way that, perhaps, only this new, young generation can grasp.

Our passion for arts education and equity for ALL students set us on the path to Arts @ Large. Making the dreams of teachers and students come alive, helping to build community, tapping into the creativity and imagination of our rich cultural arts community fuels our efforts. Each day we feel honored to welcome the support of the local, regional and national funding community to build stronger connections between arts and academics in our schools. Every moment that we are able to provide the resources for teachers to work side-by-side with artist educators, community partners and higher education we are grateful. Time and again, we are thankful that a paintbrush can be put in the hands of a child that would otherwise have no opportunity to find their creative voice and visualize their story. We believe that a harmonica can be a tool to help a student socialize among his or her peers.

These and many more reasons are why we strive to build a sustainable program, a program built with the help of teachers, administrators, specialists, artists, and funders for our students.

When art meets academics, the left and right brain merge. Arts @ Large, from its very beginning, has been a collaboration. It requires creativity and organization, risk taking and vision. It is a balancing act with an outcome that meets the needs of every child and teaches the whole child. It might be easier to create a “canned” stagnant program where one size fits all, but that would only reach either the left or the right side thinkers. We create unique programs for each and every school because that is art.

And, that is Arts @ Large.

– Kim Abler & Teri Sullivan, Founders and Co-Directors



Table of Contents

I. The Arts @ Large Program 6-13

- a. Connecting Arts to Academics 6-7
- b. Arts Rich Environment 8
- c. The Arts @ Large Model 9-11
- d. Arts Education Collaboration 12-13

II. Planning Your Successful Arts @ Large Program 14-45

- a. Guidelines for Successful Programs 16-17
- b. Define 18-24
- c. Identify 25-26
- d. Partner 27-33
- e. Plan 34-35
- f. Implement 36-37
- g. Assess 38-41
- h. Celebrate 42-45

III. Arts Education Partnerships 46-61

- a. Role of the Teacher 47-53
- b. Role of the Artist 54-59
- c. Creating a Partnership 60-61

IV. Best Practices 62-75

- a. On Assignment with Arthur Leipzig 64-65
- b. Through Our Eyes: Building Community 66-69
- c. Milwaukee Heroism Project 70-71
- d. Playin' the Blues for Inclusion 72-75

V. References 76

“We all have a gift.”

– 7th grade student, Albert Story School

Arts @ Large has built an exemplary program that links community artist educators and higher education with teachers and students to create an atmosphere of arts-infused learning. Since the inception of Arts @ Large in 2001, we’ve observed and documented characteristics of excellence in arts education collaboration both in the classroom, and in after school and summer programs. The organic evolution of the Arts @ Large program is the result of ideas and best practices developed in a collaborative model between teachers, administrators, after school providers, artist educators, higher education and most importantly, students.

“An artist cannot fail; it is a success to be one.”

– Charles Horton Cooley

The Arts @ Large model is based on a simple mission: consistently advocate for the connection of arts to academics by building sustainable partnerships between the arts community, K-12 educators and students, public policy makers, and institutes of higher education.

With this mission in mind, we strive to meet goals that make arts education accessible for ALL students.

Arts @ Large:

- Provides ongoing, quality arts experiences for students that builds an arts-rich school climate, which encourages the inclusion of art and music specialists in school staffing plans.
- Forges sustainable partnerships with artists, arts and community organizations to enhance in-classroom and after school learning, and motivate ALL students to higher academic achievement.
- Provides arts education experiences in an inclusive environment designed to motivate students with diverse learning and physical abilities.
- Helps teachers build skills to integrate performing, visual, and literary arts into all subjects in a manner sensitive to the needs of a diverse student population.

The arts are essential because they:

- Are a unique language that all people use to communicate regardless of age, ability, ethnicity or gender. They allow people to move beyond individual differences such as race, society, culture, education and economic level.
- Are symbol systems like letters and numbers and are equally important to a person's development.
- Allow every child to learn.
- Connect the learning of both content and process.
- Develop independence and collaboration.
- Provide opportunities for self expression, creative problem solving and critical thinking.
- Improve student achievement - enhancing test scores, attitudes and social skills.
- Provide authentic assessment opportunities.
- Create a bridge between motivation, instruction, assessment and application - leading to deeper understanding.
- Integrate mind, body and spirit thereby addressing the whole child.
- Provide immediate feedback and opportunities for reflection.
- Exercise and develop higher order thinking skills including analysis, synthesis, and problem solving.
- Address the multiple intelligences and various learning styles.

Environment

Arts @ Large strives to create an arts-rich environment in schools that provide for ongoing arts integrated experiences inclusive of the needs of ALL students. We ask schools to consider the place that the arts hold in their overall programs.

Schools who apply to be a part of the Arts @ Large program consider these factors when determining where their school ranks in providing teachers and students with an arts-rich environment.

What we do is as important as what we say. Actions speak louder than words. Looking at your school, consider where you are and where you would like to be. Which of these criteria ranks as needing improvement and can be selected as goals that your school can work toward?



(5 = Highly arts-rich, 1 = Needs most improvement)

- 1 2 3 4 5 When students are asked what is important to them, they include the arts.
- 1 2 3 4 5 Student art is regularly displayed in the hallways.
- 1 2 3 4 5 Art and Music Specialists are included and participate in whole staff planning.
- 1 2 3 4 5 Art and Music Specialists are included in grade level planning meetings.
- 1 2 3 4 5 Artist Educators have provided art residencies within the past year.
- 1 2 3 4 5 All teachers integrate art into their curriculum on a regular basis (weekly or more).
- 1 2 3 4 5 The arts are included and evident in classroom teacher lesson plans.
- 1 2 3 4 5 School staff, students and parents participate in the arts in the community.
- 1 2 3 4 5 The school calendar and newsletter provides evidence of arts experiences and opportunities at school and in the community.
- 1 2 3 4 5 The arts are shared with the parents and the community.
- 1 2 3 4 5 There is a connection between the during the school day and the after school arts programming.
- 1 2 3 4 5 Reading and writing assignments incorporate the students' art experiences.
- 1 2 3 4 5 The arts are used to assess students in the other content areas.
- 1 2 3 4 5 The arts or arts integration are included in the professional development in a school year.
- 1 2 3 4 5 School programs and parent events include opportunities for students to perform or exhibit their artwork.
- 1 2 3 4 5 The school Educational Plan reflects the art programming at the school.
- 1 2 3 4 5 The school has developed partnerships with local artists and/or arts organizations.

Adapted from Burnaford, G., April, A., & Weiss, C. (2001). Renaissance in the Classroom: Arts Integration and Meaningful Learning. Mahwah, NJ: Lawrence Erlbaum Associates.

The Arts @ Large Model

Arts @ Large schools are accepted through an application process that is reviewed by a committee of the Arts @ Large Board of Directors and selected community and school representatives. Artists, educators, and business representatives help to prioritize the needs of schools and the appropriate fit for the Arts @ Large program. Financial resources are distributed based on student enrollment and the availability of funding from local, regional and national sources.

- Arts @ Large staff works with schools to create project teams comprised of teachers representing all grade levels and a variety of academic subjects.
- Teams identify academic learning priorities.
- Arts @ Large helps teams forge sustainable partnerships with higher education, artists, arts organizations and community organizations.
- Teachers participate in workshops, in-services, and higher education courses to acquire skills in proven arts integration methods.
- Teacher teams and partners collaborate to create arts integrated curriculum that motivates students to higher levels of engagement and academic achievement.

Arts @ Large schools receive a multitude of services that build an arts-rich learning environment. Arts @ Large provides:

- multi-disciplinary arts experiences for students that encourages partnerships between artist educators, community organizations, higher education and schools to create short and long-term project-based learning.
- professional development for teachers through participation in higher education arts integration courses, on and off-site in-services and workshops.
- substitute teachers that allow classroom teachers the opportunity to participate in visual, performing, and literary arts workshops.
- art and music supplies for academic curriculum-based arts integration experiences.
- transportation and admission fees for students and teachers to attend performances and exhibitions.
- resources for students to create their own neighborhood and public exhibitions, and special events.

Arts @ Large applications are reviewed and ranked based on a series of criteria. Eligible schools are K-8 Schools that...

- have a .2 or less art and/or music specialist allocation.
- have 50% or more of the student body eligible for free or reduced-price lunch.
- have an enrollment of 500 or less.
- have a diverse ethnic, social, developmental, and academic focused student population.
- support providing arts experiences for ALL students, regardless of their ability, geographic location, gender, ethnicity or socioeconomic status.
- demonstrate support by administrators and teachers to create a school-wide, sustained commitment to the arts by integrating visual, performing, and literary arts across the academic spectrum.
- demonstrate the ability by classroom teachers to lead an arts integration effort.
- support collaboration between classroom teachers and community artist, arts organization, and higher education partners to enhance academic learning.
- support professional development for all teachers in arts integration strategies.
- staff administrators willing to explore ways to reinstate licensed specialists in full or part-time capacities within or at the end of Arts @ Large's three-year tenure in a school (length of support is based on available funding).

Complete your application and submit to Arts @ Large. Ongoing applications accepted.

Arts @ Large, Inc.
4650 N. Port Washington Rd.
Milwaukee, WI 53212

This application is posted on our Web site for download at: www.artsatlargeinc.org

Schools accepted for admission into the program will be notified by an Arts @ Large representative. Program services are subject to available resources.

School Name _____ Principal _____

Contact Person _____ Title _____

Address _____

City _____ State _____ ZIP _____

School Phone _____ Contact Person Phone _____

Fax _____

E-mail _____ School Hours _____

_____ Total Enrollment _____ # of Teachers _____ % Eligible for Free/Reduced-Price Lunch _____ % Special Needs

_____ % African American _____ % Asian _____ % Hispanic _____ % Native American _____ % White _____ % Other

I have attached a current staff roster to this application.

Please attempt to answer questions within the space allowed. If needed, one additional page may be added.

1. Why are you interested in becoming an Arts @ Large school?

2. Looking at your existing educational plan, how do you envision introducing the arts to support academic curriculum?

3. When was the last time that you had a licensed art specialist on staff? What prompted the elimination of a licensed art specialist position? What efforts have you taken to support your arts programming since the elimination?

4. Please describe your special needs student population. (Number of students, types of exceptionality, and staff that support your special needs population.)

5. Please describe the facilities and material resources available in your school to support an Arts @ Large program.

6. If your school is selected, who might you invite to serve on your Arts @ Large team to best represent the interests of all students and teachers in your school? (may include classroom teachers, specialists, administrators, special education representatives, parent volunteers...)

7. Is there anything else that you wish to share that would encourage your school's acceptance into the Arts @ Large program?

Yes, _____ school meets the Arts @ Large eligibility requirements.

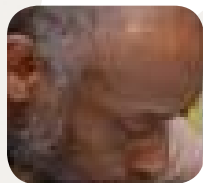
Principal _____ Date _____
Signature

Contact Person _____ Date _____
Signature

Arts Education Collaboration

CHARACTERISTICS OF EXCELLENCE IN ARTS EDUCATION COLLABORATION

- Sustainable long-term relationships are developed.
- Multiple perspectives are valued.
- Projects support capacity building.
- Partners view the entire curriculum as being whole.
- Projects provide equal access for all students.
- The program builds on the strength of each art form.
- Projects encourage leadership among the partners.
- School-wide initiatives build bridges with the community.



A vast majority of Arts @ Large school programs include a variety of partnerships with artist educators, arts organizations, community organizations and higher education to develop long-lasting relationships with the community and raise the level of arts programming for all students.

Partnerships between teachers, artist educators, community organizations and higher education bring new ideas, new perspectives and projects that motivate students to learn in an exciting environment. The success of the Arts @ Large program is entirely based on meeting the needs of teachers, students and all partners involved.

When your Arts @ Large team considers a partnership with an artist educator, arts organization, higher education or community partner, take an inventory of your program plans.

- Projects are spread throughout the school equitably.
- Arts @ Large teams meet regularly to plan and monitor the overall program.
- School Governance Committees are committed to the Arts @ Large initiative in their school.
- Open communication is maintained between the school, artist educators and community organization partners.
- Artists and teachers collaborate in creating and implementing projects.
- After the artists leave, teachers continue the work or build on projects.
- Teachers work with artists and a team-teaching approach is presented.
- The school principal or leader supports the Arts @ Large program and is involved.
- During residencies, the entire school community is aware of projects.
- At the beginning of residencies, artists, teachers and Arts @ Large staff meet to plan.
- In the middle of residencies, artists, teachers and Arts @ Large staff meet to assess progress and make process improvements.
- At the end of residencies, artists, teachers and Arts @ Large staff assess the project.
- Projects are documented throughout (student writing, drawings, photography/video, surveys, lesson plans).
- Parents are involved in projects.
- Projects are created to serve the needs of all students regardless of their learning or physical abilities.
- Projects consider the cultural diversity of students and reflect a respect for culture.
- The Arts @ Large Student Team is active in relaying the voice of the student population to teachers and staff.