

FORUM
OF REGIONAL
ASSOCIATIONS OF
GRANTMAKERS



Philanthropic Connections: Mapping the Landscape of U.S. Funder Networks

A report of a study by
the Forum of Regional Associations of Grantmakers
Washington, D.C.
www.givingforum.org

as part of the
Scanning the Philanthropic Community in America Project
funded by the Charles Stewart Mott Foundation

Prepared by
Lucy Bernholz, Kendall Guthrie, and Kaitlin McGaw
Blueprint Research & Design, Inc.
San Francisco, CA and Seattle, WA
www.blueprintrd.com

Spring 2003

Philanthropic Connections: Mapping the Landscape of U.S. Funder Networks

Table of Contents

FOREWORD from the Forum of Regional Associations of Grantmakers	
I. INTRODUCTION: FRAMING THE ISSUE AND HIGHLIGHTS FROM THE INITIAL INVENTORY..	1
A. <i>The Potential of Networks</i>	4
B. <i>The State of Research on Funder Networks</i>	5
C. <i>The Scanning the Philanthropic Community in America Project</i>	5
D. <i>Highlights from the Initial Inventory of Funder Networks</i>	6
E. <i>Initial Implications of this Research</i>	7
II. BUILDING THE FUNDER NETWORK INVENTORY: AN INITIAL PORTRAIT OF FUNDER NETWORKS	10
A. <i>Research Objects and Methods</i>	10
<i>Exhibit 1: Types of Referring Organizations of Funder Networks</i>	11
B. <i>Limitations of the Data</i>	12
C. <i>Assessment of Network Coverage in Each State</i>	12
D. <i>Patterns from an Analysis of the Inventory Data</i>	14
<i>Exhibit 2. Distribution of Funder Network Membership Size</i>	15
<i>Exhibit 3. Geographic Coverage of Funder Networks</i>	15
<i>Exhibit 4. Meeting Frequency Among Funder Networks</i>	16
<i>Exhibit 5. Type of Activities</i>	17
<i>Exhibit 6. Criteria for Affiliation Among Funder Networks</i>	17
<i>Exhibit 7. Type of Hosting Organizations for Funder Networks</i>	18
III. RECOMMENDATIONS FOR FURTHER RESEARCH.....	20
APPENDIX A. INVENTORY OF REGIONAL ASSOCIATIONS OF GRANTMAKERS AND OTHER FUNDER NETWORKS	22
A. <i>Regional Associations of Grantmakers</i>	23
B. <i>Directory of Other Funder Networks</i>	26
APPENDIX B. STUDY COMMITTEE MEMBERS	46
APPENDIX C. MAPS DEPICTING THE COMBINED COVERAGE OF REGIONAL ASSOCIATIONS AND FUNDER NETWORKS	47
A. <i>Regional Associations of Grantmakers</i>	47
B. <i>Statewide and Multi-state Funder Networks</i>	48
C. <i>Metropolitan Networks</i>	49
D. <i>All Networks</i>	50



Foreword

As early as 1948, grantmakers in the U.S. Southwest began organizing themselves into a regional association. The goal of the Conference of Southwest Foundations was for funders to learn from each other in their multistate region, share information, enhance their leadership capacity, and engage in collaborative partnerships. At about the same time, the national-level Council on Foundations also began forming, to create a unified voice and service system for the entire field in this country.

But the instinct continued and evolved, to build community and discuss shared needs *within a more regionally defined and accessible geographic area*. There are now 29 formally organized, staffed and full-service “regional associations of grantmakers” covering virtually all of the United States. They collectively represent more than 5,000 member grantmaking organizations and other philanthropic stakeholders, and work together nationally through the Forum of Regional Associations of Grantmakers.

Recent years have seen a marked proliferation of additional, less formal groups of grantmakers as well. These funder networks (as distinct from regional associations, and often operating under the aegis of those larger organizations) tend to come together around a specific funding issue or job function, or around a geographic unit *inside* and more local than the broader boundaries defined by their regional association.

The overall purpose of the Forum of Regional Associations of Grantmakers is to advance and represent philanthropy as practiced *at the regional level*. Thus it seemed important for us to undertake a formal examination of exactly who else is currently “out there” beyond our member associations, what exact audience subsets they serve, and what their relationships are to the more formal regional associations and/or other hosts. This resulting report is ***Philanthropic Connections: Mapping the Landscape of U. S. Funder Networks***. We were pleased to have as our partners the Charles Stewart Mott Foundation, Blueprint Research and Design, Inc., and an advisory committee comprising major national infrastructure leaders.



The report, together with its directory and maps, is the first time our field has had a nationwide picture of the myriad and diverse ways grantmakers convene, collaborate, communicate and collectively act across this country. That picture is striking in its size and variety. More importantly it is *encouraging* – in its potential to serve as a robust nationwide but grassroots-based “web” through which grantmakers can collectively seize opportunities and respond to challenges.

The Forum was pleased to lead the study of this emerging and important market segment, and is currently exploring ways to provide – and help its member regional associations provide - ongoing connections to these other networks in order to more effectively address needs, leverage resources, and facilitate funder collaboration for the public good. We are also partnering with Grantmakers for Effective Organizations, in a subsequent effort to expand and deepen our knowledge about these and other such groups.

Philanthropic Connections is an important milestone in the documentation of the philanthropic community in America. A searchable directory of these networks will be maintained at the Forum’s website, at <http://www.givingforum.org/ralocator.html>. We hope you find the information useful in your own work, and we enthusiastically welcome continued efforts to better support the power of grantmakers working together at a regional level.

Alison Wiley
President, Forum of Regional Associations of Grantmakers

Valerie S. Lies, Study Chair
President, Donors Forum of Chicago

Martin Lehfeldt, Forum Board Chair
President, Southeastern Council of Foundations



I. Introduction: Framing the Issue and Highlights from the Initial Inventory

When we think of philanthropy, we tend to think in terms of individual, rather than collective, action. Our common measures of philanthropy focus on either individual giving or the aggregated actions of thousands of individual foundations. While foundations are, by nature, individualistic in their structures, the truth is that they thrive on networking and associating with each other. We currently have few tools or metrics to understand this collective action.

This propensity to network is an important feature of the philanthropic industry. Grantmaking organizations have developed many mechanisms to associate, the most visible being national affinity groups focused on issues and Regional Associations of grantmakers. Regional Associations are unique in the landscape in many ways. They tend to offer the broadest structural umbrellas, network most actively with their peers through the national Forum of Regional Associations of Grantmakers, frequently incubate other networks, and play key roles on state level policy matters, knowledge building, new donor development, and joint funding opportunities.

While Regional Associations have long dominated the regional infrastructures, their roles are evolving, as grantmakers increasingly also gather in less formal, more local groups. In this landscape of philanthropic associations, little is known about the less formal networks—why they are developing, who is joining, or what services they provide. We know there are networks of individual donors, associations of organizations, and hybrids of the two. We know that there are examples of networks that exist of people meeting together around tables and of people meeting electronically. We do not, however, know very much about these networks. This research set out to inventory these sub-national networks, create a portrait of their basic features, and begin to situate their role in the larger landscape of philanthropic associations.

The first part of this paper reflects on the important role funder networks play in philanthropy, drawing in part on highlights from a year-long research project to inventory funder networks operating at the sub-national level. The second part of this paper describes the funder network inventory research in detail, including methods for building the initial inventory. It also presents a preliminary portrait of funder networks and an assessment of their combined coverage by state, based on an analysis of the data from the inventory.

For the purposes of this project, a funder network was defined as an organization of philanthropic organizations, the staff of these organizations, or individual donors that had developed a collective identity, some



organizational structure, and a mechanism for exchanging information. The term “funder network” is used to distinguish these groups, usually less formal, from the 29 “Regional Associations” that belong to the Forum of Regional Associations of Grantmakers and about whom much more is known.

A. *The Potential of Networks*

Regional Associations and funder networks are important elements of the philanthropic landscape for several reasons.

- They represent a collective voice for foundations—one that has significant potential to influence policymakers, the media, and other forces outside the industry.
- These networks provide those inside and outside the industry a point of leverage and entree to groups of foundations, providing some sense of a collective in an otherwise highly fragmented industry.
- Like-minded funders can use networks to define community issues, to identify potential solutions, and to pool their resources.
- Funder networks provide potential venues in which industry knowledge can be created, inventoried, and shared.
- These networks reveal those characteristics which foundations self-identify as important to the field—namely issues, identity, structure, and geographic scope.
- These networks may be important factors in terms of collective action, joint purchasing, economies of scale, and other positive aspects of aggregation.

However, while we can hypothesize that professional and trade associations for foundations are positioned to offer at least the same suite of benefits as those in other industries, it would serve the field to have a deeper understanding of how the industry is supported by its associations. In general, professional and trade associations exist to provide peer networking, career and professional development opportunities, standards acceptance, ethical guidance, advocacy or lobbying support, and knowledge exchange. From self-reports of the larger networks in philanthropy, we know many of these services; however we do not know the full range of the services they offer. We also know that the networks and associations themselves are proliferating. However we do not have a good sense of the reasons why.

In the 1970s and 1980s, a small number of associations existed to serve foundations at either the national or regional level. In the last two decades, a number of networks and associations dedicated to particular identity groups and to specific issues began to develop. In the 1990s, new associations



formed that focused on specific foundation structures (such as the Association of Small Foundations or networks of community foundations). What drove the creation of these new networks? What do the changes in the association landscape portend for foundations?

B. The State of Research on Funder Networks

Very little formal research exists on the nature of funder networks. We know there are funder networks that operate at the local, statewide, regional, national, and international levels. They are organized around structures, issues, identity, strategies, regions, and as industry-wide networks. Some of them are established as stand-alone entities, others are informal sub-groups of existing associations, and others are so *ad hoc* they may not yet consider themselves a formal funder network.

There is no single, comprehensive directory of foundation associations and funder networks. Nor do we have enough information about funder networks to know what trends exist in their creation and collapse, purpose, size, structure, or inter-network alliances. We do not know how significant these entities are or may be in linking philanthropists of different types together, in representing foundation interests to policy makers or the media, or in advocating for or causing improvements in philanthropic practice.

C. The Scanning the Philanthropic Community in America Project

In 2000, the Forum of Regional Associations of Grantmakers (The Forum) and The Charles Stewart Mott Foundation began an initial investigation into the changing nature of sub-national funder networks. The study's specific purpose was to identify as many networks as possible to inform a sense of the current capacity of foundations to act jointly at the state level. This overarching question had several sub-inquiries, and the advisory group to the project was never at a loss for identifying additional questions of interest.¹ As the initial research inquiries showed, however, the first need was to develop a comprehensive list of funder networks other than Regional Associations that operate at the sub-national level.²

¹ The Advisory Group to the "Scanning the Philanthropic Community in America Project" was chaired by Valerie Lies, President, Donors Forum of Chicago and includes: Alan Abramson, Director, Nonprofit Sector & Philanthropy Program, The Aspen Institute; Audrey Alvarado, President, National Center for Nonprofit Associations; Elan Garonzik, Senior Program Officer, C.S. Mott Foundation; Martin Lehfeldt, President, Southeastern Council of Foundations; Sara Melendez, former President, Independent Sector; Dorothy Ridings, President & Chief Executive Officer, Council on Foundations; Nancy Roberts, President, Connecticut Council for Philanthropy; Julie Rogers, President, Eugene & Agnes E. Meyer Foundation; Charles Scott, former Executive Director/CEO, Association of Small Foundations; and Alison Wiley, President, Forum of Regional Associations of Grantmakers.

² National funder networks, such as the affinity groups of the Council on Foundations, were not included in this research and analysis because their activities and membership were well known and well documented. This project focused on identifying sub-national networks because there was virtually no comprehensive information about them.



The project was a groundbreaking step in thinking about associations of grantmaking organizations. In many ways, the work has served to highlight the importance of funder networks, while also revealing how much remains to be known. The project made clear the value of “mapping” the existing geographically and issue-based philanthropic associations. This map (or series of maps) would, ideally, show several “topographical features” of all associations, including geographic reach, identity focus, issue focus, policy capacity, and membership type. Such an atlas would allow individual grantmaking organizations to identify available resources. The maps would allow individual associations to chart their own territorial bounds while taking others into account. They would provide financial supporters of Regional Associations, philanthropy affinity groups, and funder networks with a comprehensive data set to inform their strategy. The maps would assist individual philanthropists in finding associations of interest to them.

The first phase of the research involved surveys, interviews, and several advisory group sessions to respond to initial findings. This effort has uncovered more than 250 funder networks (in addition to the 29 Regional Associations of grantmakers and 38 affinity groups sponsored by the Council on Foundations.) Blueprint Research & Design, Inc. and the Forum have developed a “living” inventory of these networks. The inventory draws from a database that can be modified as new networks are identified. The inventory includes the name, organization type, geographic reach, membership size, staffing, age, primary activities, and any host organization for the network. The initial list of networks was generated through a secondary source survey³ and subsequently checked with each identified network. The most current version of the directory is provided as Appendix A.

D. Highlights from the Initial Inventory of Funder Networks

Since the inventory of funder networks is living or “dynamic”, the data below should be considered for the general patterns rather than the specific numbers. We were able to identify several key facets of the landscape of networks. These include:

- Funder networks are not equally dispersed across the country: some regions are heavily served, and others have few networking resources. There were five states where no funder network could be identified other than the out-of-state multi-state Regional Associations currently serving these areas. Thirteen additional states have some geographic

³ Surveys were sent to the members of the Forum of Regional Associations of Grantmakers, community foundations, state associations of non-profits, Council on Foundations Affinity Groups, and previously identified non-Forum funder networks.



- regions where there are no network opportunities other than perhaps some services from an out-of-state Regional Association.
- California has the most funder networks (38), followed by Illinois (27), New York (19), the District of Columbia (19), and Massachusetts (18). The District of Columbia has the highest ratio of networks available compared to the number of foundations in the region—one network for every 18 foundations. Most of these DC funder networks are groups operating under the rubric of the area Regional Association, Washington Grantmakers, with similar situations occurring in other regions.
 - Most networks are small, locally-focused groups that meet on a quarterly basis. About half the groups base membership on factors other than geography, such as interest in an issue area or job category.
 - Most networks exist to provide networking opportunities and information sharing for members. One quarter have some type of electronic mail list serve to communicate with members between meetings. Half the networks have formal education programs. One quarter have some type of collaborative funding.
 - Most networks were formed with the last five years. Community foundations and Regional Associations have been key players in organizing and supporting many of the networks.

E. Initial Implications of this Research

This initial phase helped to uncover several important features of the overall landscape of U.S. funder networks. This “birds-eye” view of the landscape is significant for those seeking to support the infrastructure of organized philanthropy, researchers seeking to understand the industry itself, and to executives of associations in the industry. Even with data in this nascent stage, it is important to note that:

- There is no standard definition of a funder network, nor are there consistent practices across the universe of networks we identified.
- Regional Associations serve as incubators or hubs for many smaller networks and associations, sometimes without realizing it.
- Regional Associations vary significantly in their geographic scope—there is no single definition of a region, nor is there a standard focus on industry issues.
- Regional Associations and funder networks do not serve the majority of foundations. Even if we aggregate the membership of all identified Regional Associations, affinity groups, funder networks, and other



philanthropic industry organizations, without accounting for duplication,⁴ the number of networked funders is a small percentage of the overall number of foundations. These groups probably serve a much higher proportion of the approximately 3,000 staffed foundations, which accounts for about 6 % of foundations in the U.S.

The work of the *Scanning the Philanthropic Community in America* project has helped to establish the parameters of philanthropic association research, to start the process of assembling an inventory of funder networks, and to identify the many institutions that share a need for a common map of all types of foundation associations, including those newly identified by the inventory research. Important steps remain to be taken:

- Expand, maintain and share the inventory of sub-national funder networks' needs.
- Gather and define greater detail on identified funder networks, including information on life cycle, membership, services, and future aspirations.
- Develop regional case studies of networks to further understand commonalities and variances among networks.
- Assess the extent to which grantmakers value networks and ascertain how they use multiple networks.
- Convene financial supporters of these networks to consider the implications of this inventory for their work.
- Conduct market research on the unaffiliated majority of foundations.
- Examine the emergence of alliances of associations (both national organizations and local networks) to understand what this trend can tell us about growth and consolidation in the field. (An example is the Affinity Groups network, an alliance of 37 Council on Foundations-recognized affinity groups.)

Part II of this paper presents the initial findings of the *Scanning the Philanthropic Community in America* project in more detail. We hope this report serves to orient newcomers to the field, frame a more comprehensive approach for those who have long considered these issues, and inspire a continuation of joint inquiry into the role, place, and promise of funder networks and industry associations.

The impulse to work together is clearly evident in philanthropy. The future of philanthropy will be filled with new types and ways of networking. Now is the

⁴ We expect that duplication of membership is significant.



time to catalogue these networks, calibrate their contributions, and examine how networks can accelerate and enhance the effectiveness of individual and institutional grantmaking.



II. Building the Funder Network Inventory: An Initial Portrait of Funder Networks

A. Research Objects and Methods

The yearlong *Scanning the Philanthropic Community in America* project set out to assess the capacity of grantmakers in each state to come together, learn, receive timely information, and take joint actions when opportunities arise.

In support of this effort, Blueprint queried Forum member Regional Associations and some of their key partners to develop an initial inventory of funder networks. This inventory provides an initial sense of the distribution of funder networks beyond Forum members across the United States and identifies some potential patterns across networks.

For the purposes of this project, a funder network was defined as an organization of philanthropic organizations, the staff of these organizations, or individual donors that had developed:

- A collective identity
- Some organizational structure (as simple as a mailing list or as formal as bylaws)
- A mechanism for members to exchange information, convene, and take collective action (such as meetings, a newsletter, a listserv or telephone tree)

The term funder network is used to distinguish these groups, usually less formal, from the 29 Regional Associations that belong to the Forum of Regional Associations of Grantmakers.

To be as comprehensive as possible given limited resources, we cast a wide net for this initial scan, including funder collaboratives and organizations hosted or organized by a Forum member. While Blueprint screened for duplicate listings, we did not try to second-guess the judgment of any referring organization. All reasonably relevant organizations were included. This range of information assisted in developing appropriate classification schema for all the networks found at this stage.

Introductory letters and surveys were sent to all Regional Association CEOs, the approximately 600 community foundations known to the Council on Foundations, state associations of nonprofits, philanthropic affinity groups, and other previously-identified networks. The letter asked them to provide a



list of all funder networks in their region. Respondents also were asked for additional information on these networks if they knew it, including:

- Description of group members and activities
- Group contact information
- Membership size
- Meeting frequency
- Geographic convergence
- Presence of paid staff
- Age of network
- Primary activities

Since this project was designed as an initial inventory, respondents were encouraged to provide their best estimates if they did not know details. This process identified 267 funder networks. Chart 1 lists the types of organizations that referred funder networks for the inventory.

Exhibit 1: Types of Referring Organizations of Funder Networks

Type of Referring Organization	Number of Referrals
Community foundations	58
Regional Associations (Forum members)	24
Associations of nonprofits	7
Networks	5
Affinity groups	2
<i>Total</i>	96

In December of 2001, all funder networks identified in the initial scan were sent a letter asking them to confirm the information received about them. Follow-up emails, faxes, and phone calls were made to those organizations that did not respond to the initial letter. For 189 organizations, the network itself confirmed the contact information and organizational descriptions. The inventory also includes information on 78 networks that did not directly confirm because either: 1) the referring organization was involved in the network, or 2) Blueprint confirmed the contact information through the Internet or phone calls. In May 2002, the CEOs of Regional Associations reviewed the inventory for final updates, for a total count of 267 networks. See Appendix A for the inventory of sub-national funder networks, as of January 2003.

Blueprint used these network descriptions to make initial assessments about the density of funder networks in each state and their collective geographic



coverage. We focused on identifying areas in any state that appeared to have few or no structured opportunities for grantmakers to affiliate. This state-by-state review is covered in Appendix B. Maps depicting joint coverage of networks are presented in Appendix C. Finally, the report provides summary information about the universe of funder networks identified through this process, such as the distribution of size, geographic coverage, and basis of affiliation.

B. Limitations of the Data

While this initial inventory of funder networks can serve as an effective planning tool, some limitations to the data should be noted. These limitations were noted at the start of the research process, and are the direct result of resource-limited methodological choices.

The inventory is biased towards larger, more connected, and established funder networks. The inventory was built primarily through referrals from Regional Associations of grantmakers and community foundations. Although all community foundations in the country received a request to recommend funder networks for the inventory, no follow up was made to non-respondents. Smaller, newer, and less formal networks that are not working with a Regional Association or community foundation are less likely to have been identified through this process. Therefore, the inventory probably is not representative of the universe of funder networks in the country, only of higher-profile funder networks.

The information provides no assessment of the quality or capacity of the networks. The research methods did not gather grantmakers' assessments of the quality of the various networks. Therefore, there is no assessment of quality of services provided by any of the networks. There also is no information about the networks' interest in or capacity for expanding.

C. Assessment of Network Coverage in Each State

Identifying regions where grantmakers had few or no opportunities for organized networking was a key goal of this research. Blueprint analyzed the coverage and depth of networking opportunities provided in each state by the combination of Regional Associations of grantmakers and any other funder networks identified through the inventory. Given the limitations on the data, this analysis is impressionistic rather than scientific. However, some states do appear to have notable limitations in the availability of networking opportunities.

A state-by-state assessment is provided in Appendix B. Four maps depicting coverage of different sets of networks are provided in Appendix C. The fourth



map in the series shows the combined coverage of both Regional Associations and all funder networks in this inventory. Notable highlights from the assessment and maps are described below.

Eighteen states appear to have notable gaps in the geographic coverage of their funder networks. No in-state funder networks were identified in Kansas, Nevada, Utah, Vermont, and Wyoming. Other states with notable gaps in the geographic coverage of their networking opportunities include:

Arizona	Louisiana	New Mexico
California	Maryland	North Dakota
Idaho	Missouri	South Dakota
Illinois	Nebraska	
Kentucky	Nevada	

Within each state of this second group, it appears that there is at least one substate region where we could not identify either a funder network or an in-state Forum member serving grantmakers. (See Appendix B for details.) It is notable that there is no identified funder network or Regional Association covering the state capitals of California, Florida, or Illinois. While many of the Regional Associations operating in these states are significantly engaged in policy work and building relations with legislators, there is no association organizing grantmakers operating in the town where the legislators meet.

There are 18 states with no general membership, statewide organizing mechanism. Many of these states have networking opportunities statewide via multiple Regional Associations and funder networks. However, these states lack an organization that focuses on connecting grantmakers on a statewide level, the organizing geography for state policy that affects grantmakers. This fragmentation might make it more difficult to organize grantmakers if a statewide policy issue arose. Of this group, six states have a statewide community foundation association that might be able to provide some statewide organizing mechanism. (These states are noted with asterisks.)

California*	Missouri	Tennessee
Georgia*	Nevada	South Dakota
Illinois	New Hampshire	Texas
Kentucky	New York	Utah
Louisiana	North Dakota	Virginia*
Maryland*	Pennsylvania*	Wyoming



The density of funder networks varies widely across states.⁵ California has the most funder networks (38), followed by Illinois (27), New York (19), the District of Columbia (19), and Massachusetts (18). The District of Columbia has the highest ratio of networks available compared to the number of foundations in the region—one network for every 18 foundations. Many of these DC networks operate under sponsorship from Washington Grantmakers (a Regional Association). While California has gaps in its geographic coverage, it is home to an unusually wide array of funder networks and shows a high ratio of one network for every 130 foundations.

In contrast, Colorado, New Jersey, and New York have some of the lowest ratios of networks compared to the high number of foundations in these states. In Colorado, there is only one network for 854 grantmakers. In New Jersey, there is only one network for every 960 foundations; and New York has one network for every 410 foundations.

Since the research included no assessment of the quality of the services provided by these different networks, the significance of the density of funder networks is unclear. It could mean that states with few networks are simply well served by a few large and well-run Regional Associations and funder networks. In contrast, it could mean that these regions might benefit from strengthening the range of opportunities for grantmakers to network.

The fourth map in Appendix C depicts the combined coverage of Regional Associations and the other networks identified through this inventory. Grantmakers in metropolitan regions generally have many choices in networking opportunities. They can join issue-based groups, metro-focused groups, and statewide groups, as well as Regional Associations. Grantmakers outside of metropolitan areas have fewer choices. This research could not identify how many grantmakers choose to join multiple networks and why. It is a key question for future research.

D. Patterns from an Analysis of the Inventory Data

Based on an analysis of the funder networks included in the current inventory, the following broad patterns are notable. Again, because of limitations in the sample of funder networks, attention should be focused on the general patterns rather than the specific numbers.

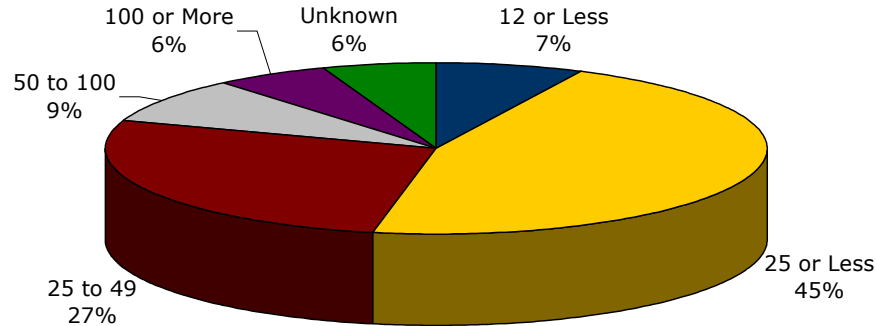
Most funder networks are small. About half the networks have membership lists of 25 or fewer funders. (See Exhibit 2.) Less than ten percent have membership lists greater than 100. Not surprisingly typical

⁵ The density figures in this section are based on 2000 data from the Council on Foundations.



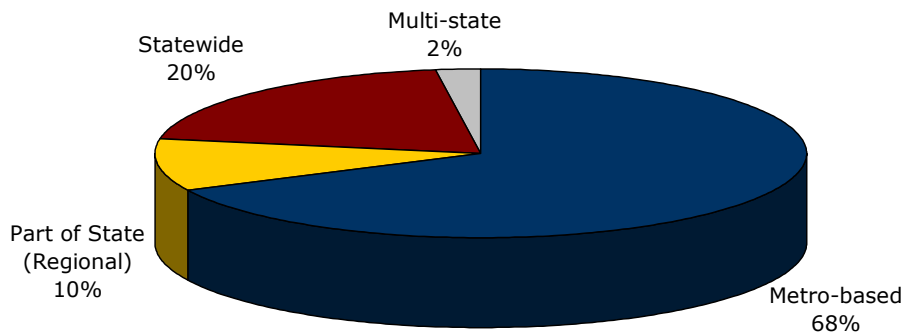
attendance at meetings is smaller than membership size. About two-thirds of the networks appear to have 25 or fewer funders attending their meetings.⁶

Exhibit 2. Distribution of Funder Network Membership Size⁷



Most networks are locally focused, usually serving a metropolitan region. Two-thirds of the identified networks draw members from a specific metropolitan area or small number of counties. (See Exhibit 3.) About 10% serve a region that includes multiple metropolitan areas within a state or a significant portion of the state. Many of the statewide networks include a growing number of state associations of community foundations.

Exhibit 3. Geographic Coverage of Funder Networks



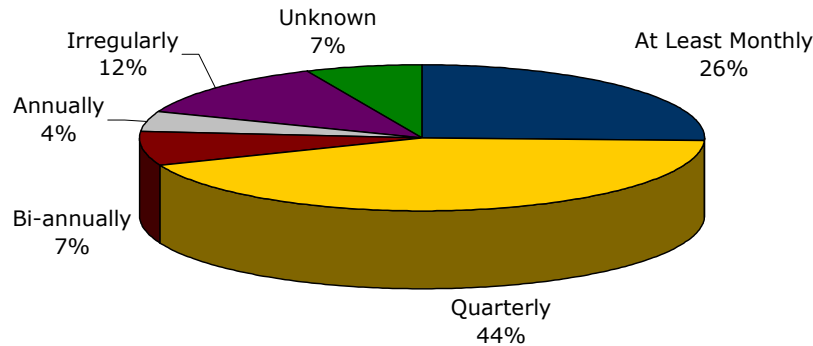
⁶ The initial survey asked only for “membership size” without distinguishing between the size of the organization’s mailing list and its attendance. In our confirmation surveys sent directly to networks, the organization distinguished between their mailing list and typical attendance. For the remaining networks, we have assumed that the membership size listed by a referring organization equals the mailing list.

⁷ N = 267 for Exhibits 2, 3, 4, 6, and 7. N = 214 for Exhibit 5.



Almost three quarters of the networks meet at least quarterly. (See Exhibit 4.) This indicator provides a very rough proxy for level of activity. Almost half meet quarterly and about 25% meet at least monthly.

Exhibit 4. Meeting Frequency Among Funder Networks

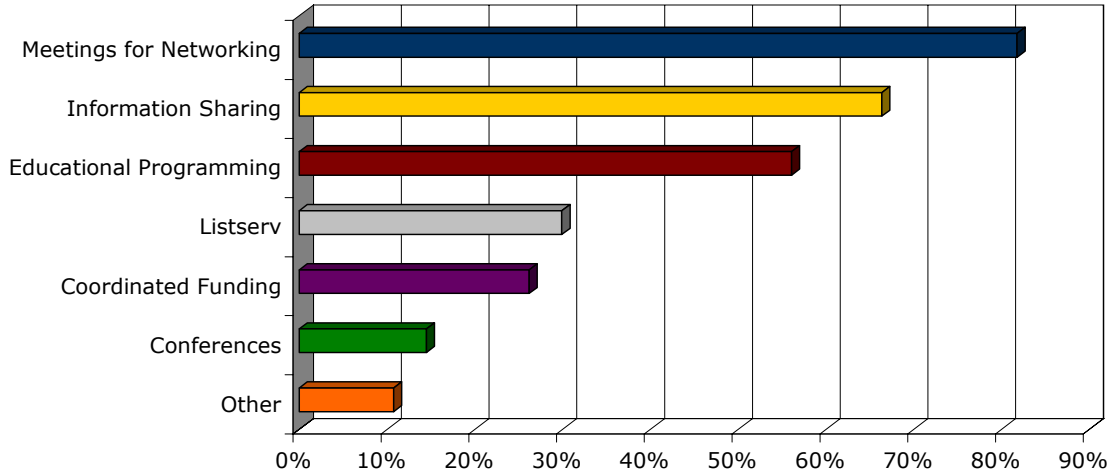


The primary activity of most networks is to provide a regular venue for members to network and share information.⁸ (See Exhibit 5.) Many of the meetings consist of gathering for a meal and informal networking, without any specific program. More than half the confirmed networks indicated that they also provide some type of educational programming. About one quarter of the networks coordinate funding, and others are exploring this opportunity. Nearly a third of the networks use an electronic mail listserv to help keep their members informed between meetings.

⁸ The initial August 2001 survey did not provide any systematic information on the type of meeting or the content and quality of any program offered. In the December 2001 and June 2001 confirmation surveys, networks and CEOs of Forum member Regional Associations were asked to indicate which of the six types of activities they offered.

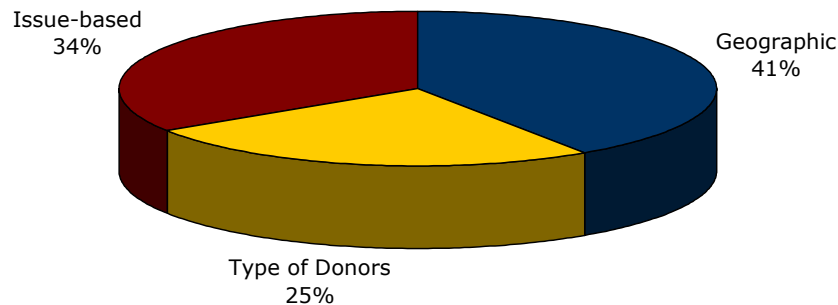


Exhibit 5. Type of Activities



Less than half the networks use geography as their sole affiliation criterion. (See Exhibit 6.) This research focused on identifying geographically based funder networks operating at the sub-national level. However, nearly two-thirds of the networks recommended for the inventory use an issue or a type of foundation or foundation staff as their primary criterion for membership.

Exhibit 6. Criteria for Affiliation Among Funder Networks



About a third of the networks convene members based on involvement in a certain issue area. Notable examples include “The Health Guys and Gals” in Pennsylvania and the New York City Youth Funders Network. Other networks convene similar types of foundations or staff. Examples include the Chicago Latinos in Philanthropy, grant manager networks in Washington, D.C. and New York, and numerous associations of community foundations. While shared geography is still one of the reasons that members join these networks, it is not the sole factor.



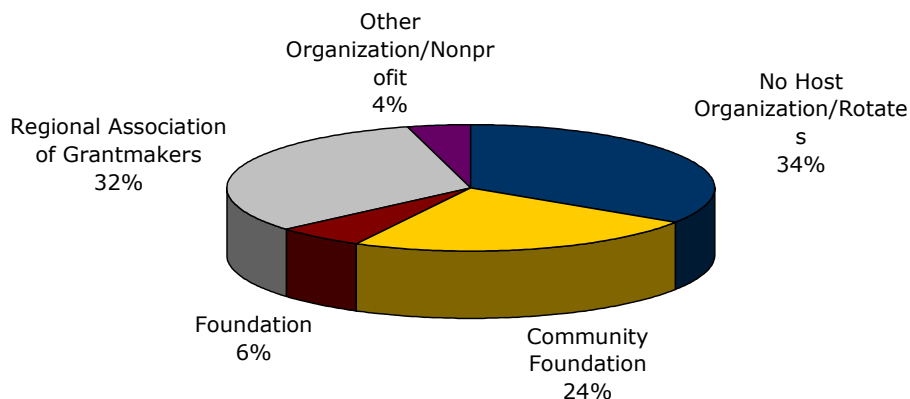
In reflecting upon this information, the project advisory committee noted that the growth of funder networks seems to follow a similar pattern to the growth of mass media. The initial networks were national, with a very broad membership base, such as the Council on Foundations. As the number of foundations grew, geographically-specific networks such as the Regional Association of Grantmakers began to emerge. These networks included a broad range of foundations covering the full-breadth of issue areas, but all focused within a single region, making it easier to convene more regularly.

As the growth in foundations has accelerated over the last 10 years, issue-based networks evolved as foundation staff and trustees sought the advice of others working on similar topic areas. The most recent trend appears to be the emergence of networks that use both issue and geographic focus to organize.

The current data are not robust enough to confirm this hypothesis. Testing it in a more formal way would be an important contribution towards the field’s understanding of how funders use networks and the patterns we can expect in future growth.

Regional Associations and community foundations are important supporters of the smaller networks identified in this inventory. (See Exhibit 7.) Many funder networks have an organization that serves as a host or sponsor, often providing basic administrative support. In many cases, this organization serves as a key player in organizing the funder network.

Exhibit 7. Type of Hosting Organizations for Funder Networks



About one-third of the networks are hosted by a Regional Association of grantmakers and a quarter of the networks are hosted by a community



foundation. Many of the community foundations that responded to the August survey specifically described their efforts to organize grantmakers in their region. Forum members have been especially active in organizing the more specialized networks. Approximately one-third of the type-based networks and nearly 60% of the issue-based networks are hosted by a Regional Association.

About forty percent of the funder networks have some kind of paid staff. Usually, staff consists of a consultant hired on contract for a portion of time each month, or a participating foundation dedicating a portion of its staff time to oversee network activities such as managing the mailing list and RSVPs.

Most networks were created in the last five years. The data do not provide any information about why they were formed, their lifespan, attrition, or relationship of network age to the level of paid staff.



III. Recommendations for Further Research

The inventory is an important first step in scanning the philanthropic industry. Even in this initial stage, it has important implications for Regional Associations, affinity groups, community foundations, infrastructure organizations, national foundations, and the many service providers to the field.

When the interim report on this project was delivered at the Forum's Annual Regional Association CEOs Seminar in August 2001, the response was encouraging. These leaders recognized the potential value of both more accurate and complete quantitative data, and more telling qualitative information. The interim report prompted dozens of follow-up suggestions for the next phase of the research. These suggestions included requests for more detailed information about the activities of the networks, their memberships, their purposes, the quality of their current work, and their ambitions. There was an interest in trying to learn about the lifecycles of funders' networks, their relationships to one another, their potential for influencing policy, and their use of new information technologies.

The Forum used the information gathered for this report as part of its strategic visioning process in 2002 and considered the roles it might play with this broader family of regionally based funder networks. Others in the field may also want to consider how the growing number and impact of funder networks will affect their work.

Developing more accurate maps of funder networks, with detailed accompanying qualitative and quantitative data, would be useful tools for the philanthropy industry at this time. This information should be collected and mapped for all interested players—the Forum, Regional Associations, funder networks, individual foundations, and academic institutions studying philanthropy.

A research effort to produce such a map would involve many of the methodologies that the Forum and Blueprint discussed during the design phase of this project. It could include a widely cast survey sent directly to funders (both those in networks and those not members of any networks, interviews, focus groups, and regional case studies). Such an effort would build the most complete portrait of the philanthropic association landscape to date.

The Forum and its individual members are to be commended for seeing the potential of this topic, for launching the initial research, and for convening an Advisory Committee that represent top leaders of many of the interested constituencies. As they have done so often before, the Regional Associations



have helped to shine light on a key set of opportunities for philanthropy. Broader and deeper understanding of how, why, where, when, and with whom foundations associate, and to what ends, will help all networks function more effectively.

A more comprehensive mapping project would provide myriad benefits to the entire philanthropic field; however, the resources required to conduct it effectively extend beyond the sole capacity of the Forum. Other colleagues are urged to step forward and carry forward on this important long-term venture.



Appendix A. Inventory of Regional Associations of Grantmakers and Other Funder Networks

This appendix lists the 29 U.S. regional associations that are part of the Forum of Regional Associations of Grantmakers as well as 267 funder networks identified through recommendations from Regional Associations of Grantmakers, community foundations, state associations of nonprofits, philanthropic affinity groups, and previously identified grantmaker networks. Blueprint Research & Design, Inc. developed this inventory for the Forum as part of the Forum's yearlong project on Scanning the Philanthropic Community in America.

A funder network was defined as an organization of philanthropic organizations, the staff of these organizations, or individual donors that had developed a collective identity, some organizational structure, and a mechanism for exchanging information. The term funder network is used to distinguish these groups, usually less formal, from the 29 regional associations that belong to the Forum of Regional Associations of Grantmakers.

Later this year, the Forum's web site will include a searchable directory of funder networks with more detailed profiles. See www.givingforum.org.

For additional information on this research, contact Blueprint Research & Design, Inc. at info@blueprintrd.com.



A. Regional Associations of Grantmakers

The regional associations of grantmakers listed below provide a range of services to members including listservs, networking meetings, information sharing, educational programming, coordinated funding, and conferences. All are members of the Forum of Regional Associations of Grantmakers.

Regional Association	Geographic Coverage: Multi-state, Entire State, Metro Area, or Part of State	First Name	Last Name	Business Phone	E-Mail
Arizona Grantmakers Forum	AZ	Marissa	Theisen	(602) 840-6813	mtheisen@arizonagrantmakersforum.org
Associated Grant Makers	MA, NH, RI	Ron	Ancrum	(617) 426-2606, x13	rancrum@agmconnect.org
Association of Baltimore Area Grantmakers	Baltimore, MD - Metro	Betsy	Nelson	(410) 727-1205	bnelson@abagmd.org
Conference of Southwest Foundations	AR, AZ, CO, NM, NV, OK, TX	Lucille	DiDomenico	(214) 740-1787	lidd@c-s-f.org
Connecticut Council for Philanthropy	CT	Nancy	Roberts	(860) 525-5585	nroberts@CTphilanthropy.org
Council of Michigan Foundations	MI	Robert	Collier	(616) 842-7080	rcollier@cmif.org
Council of New Jersey Grantmakers	NJ	Barbara	Rambo	(609) 341-2022	brambo@tesc.edu
Delaware Valley Grantmakers (Greater Philadelphia)	Philadelphia, PA - Metro	Dale	Mitchell	(215) 790-9700, x4	dale@dvg.org
Donors Forum of Chicago	Chicago, IL - Metro	Valerie	Lies	(312) 578-0090, x129	valerie@donorsforum.org
Donors Forum of South Florida	Southern FL	JoAnne	Bander	(305) 371-7944	joanne@donorsforumsf.org
Donors Forum of Wisconsin	WI	Deborah	Fugenschuh	(414) 270-1978	dfugenschuh@dfwonline.org
Grantmakers of Oregon and SW Washington	OR, Southwest WA	Joyce	White	(503) 226-6340	jwhite@gosw.org



Regional Association	Geographic Coverage: Multi-state, Entire State, Metro Area, or Part of State	First Name	Last Name	Business Phone	E-Mail
Grantmakers of Western Pennsylvania	Western PA	Judie	Donaldson	(412) 471-6488, x2	jdonaldson@gwpa.org
Indiana Grantmakers Alliance	IN	Carol	Simonetti	(317) 630-5200	csimonetti@ingrantmakers.org
Maine Philanthropy Center	ME	Janet	Henry	(207) 780-5029	henryj@me-grants.org
Metropolitan Association for Philanthropy	St. Louis - Metro	Kathy	Doellefeld-Ciancy	(314) 621-6220	kdc@mapstl.org
Minnesota Council on Foundations	MIN	Bill	King	(612) 335-3557	bking@mcf.org
New Mexico Association of Grantmakers	NM	M. Carlota	Baca	(505) 995-0933	mcbaca@nmag.org
New York Regional Association of Grantmakers	New York City - Metro	Barbara	Bryan	(212) 714-0699, x1006	bbryan@nyrag.org
Northern California Grantmakers	Northern CA	Lynn	Luckow	(415) 777-5761, x14	lluckow@ncg.org
Ohio Grantmakers Forum (Northeast Office)	OH	George	Espy	(216) 861-6223	gespy@ohiogrntmakers.org
Philanthropy Northwest	AK, BC, ID, MT, OR, WA	Alice	Shobe	(206) 770-9423	ashobe@philanthropy-nw.org
Rochester Grantmakers Forum	Rochester NY - Metro	Elizabeth	Wilder	(585) 232-2380	liz.wilder@grantmakers.org
San Diego Grantmakers	San Diego, CA - Metro	Julie	Holdaway	(619) 744-2180	julie@sdgrantmakers.org
Southeastern Council of Foundations	AL, AR, FL, GA, KY, LA, MS, SC, TN, VA, WV	Martin	Lehfeldt	(404) 524-0911	martin@secf.org
Southern California Association for Philanthropy	Southern CA	Miyoko	Oshima	(213) 680-8866	miyoko@scap.org
Washington Regional Association of Grantmakers	Washington DC - Metro	Kae	Dakin	(202) 939-3441	dakin@washingtongrantmakers.org



Philanthropic Connections

Regional Association	Geographic Coverage: Multi-state, Entire State, Metro Area, or Part of State	First Name	Last Name	Business Phone	E-Mail
Western New York Grantmakers Association	Western NY	Mary	Eberl	(716) 845-0734	wnyga@aol.com



B. Directory of Other Funder Networks

General Information				Activities Offered L=listserve N=networking mtgs I=information sharing E=ed. programming F=coordinated funding C=conferences							Primary Contact			
State	Funder Network	Network Host Organization	Geographic Coverage	L	N	I	E	F	C	First Name	Last Name	Work Phone	Email	
AK	Alaska Funders Group		Entire State							Nancy	Schoephoester	(907) 263-4655		
AL	Birmingham Contributions Network		Metro Area							Ann	Wells	(205) 326-5305		
	Donors Forum		Entire State	X						W.B.	Johnson	(205) 257-2474	wbjohnson@southernco.com	
	Funders Forum		Metro Area							Ginny	Russell	(251) 433-6951		
	Alabama Funders Forum	Community Foundation of Greater Birmingham	Entire State							Kate	Nielsen	(205) 328-8641	kate@foundationbirmingham.org	
	Mobile Foundations for Networking	Community Foundation of South Alabama	Metro Area							Bradley G.	Smith	(251) 343-1999		
AR	Arkansas Grantmakers Association	Arkansas Community Foundation	Entire State							Pat	Lile	(501) 372-1116	plile@arcf.org	
AZ	Southern Arizona Grantmakers	Community Foundation for Southern Arizona	Part of State	X	X	X	X			Barbara	Brown	(520) 770-0800	bbrown@cfsoaz.org	
CA	Bay Area Blacks in Philanthropy		Metro Area											
	Early Childhood Funders		Metro Area							Cheryl	Polk	(415) 296-9249		
	Education Funders Group		Metro Area	X			X			Ray	Reisler	(310) 476-5413	ray_reisler@smtfoundation.org	
	Foundation Consortium		Entire State							Judy	Chenorveth	(916) 646-3646		
	Foundation Roundtable		Metro Area	X	X	X	X	X	X	Joni	Meisel	(805) 692-2020	pjandj@silcom.com	
	Girls Funders Network		Metro Area											



General Information				Activities Offered L=listserve N=networking mtgs I=information sharing E=ed. programming F=coordinated funding C=conferences							Primary Contact			
State	Funder Network	Network Host Organization	Geographic Coverage	L	N	I	E	F	C	First Name	Last Name	Work Phone	Email	
CA	Grants Managers Network		Part of State							Becky	Martin	(818) 593-6600		
	LA Arts Funder Group		Metro Area	X			X			Claire	Peeps	(310) 899-5120	claire@durfee.org	
	Los Angeles Immigrant Funders' Collaborative		Metro Area							Daranee	Petsod	(707) 824-4364		
	Marin Funders		Metro Area							Thomas	Peters	(415) 461-3333	tpeters@marincf.org	
	Northcoast Funders Clearinghouse		Part of State	X	X	X	X			Barbara	O'Neal	(707) 442-2993	barbo@hafoundation.org	
	Orange County Corporate Community Relations Council		Metro Area	X	X	X	X			Michele	Myszka	(949) 219-3214	mmyszka@pacifclife.com	
	San Diego Neighborhood Funders		Metro Area					X		Nina	Smart		ninaws@aol.com	
	Youth Development Funders		Metro Area							Leticia	Alcantar	(415) 561-6400		
	HIV Funding Collaborative	Alliance Healthcare Foundation	Metro Area					X		E. Thomas	Brewer, MSW, MPH	(858) 874-3788	SDHFC@alliancehf.org	
	California Healthfunders	California Healthcare Foundation	Entire State	X	X	X			X	Katherine	Miller		info@healthfunders.org	
	Monterey County Funders Forum	Community Foundation for Monterey County	Metro Area	X	X	X				Todd	Lueders	(831) 375-9712		
	Quality Child Care Initiative	David & Lucile Packard Foundation	Part of State	X	X	X	X	X	X	Fran	Kipnis	(650) 917-7174	f.kipnis@packfound.org	
	Giving Northern California	East Bay Community Foundation	Part of State	X			X			Raichelle	Toole	(510) 208-0836	rjtoole@givingnorcal.org	
	League of California Community Foundations	Independent incorporated nonprofit.	Entire State	X	X	X	X	X	X	Diana	Haigwood	(707) 586-0277	dianadh@pacbell.net	
	North County Philanthropy Council	Independent incorporated nonprofit.	Metro Area							Mary	Stanton	(858) 673-7288	marybeth@san.rr.com	



General Information				Activities Offered L=listserve N=networking mtgs I=information sharing E=ed. programming F=coordinated funding C=conferences										Primary Contact		
State	Funder Network	Network Host Organization	Geographic Coverage	L	N	I	E	F	C	First Name	Last Name	Work Phone	Email			
CA	Corporate Community Relations Consortium	Leadership rotates; Companies host	Metro Area	X	X	X				Gabi	Estill	(408) 492-6956	gabriele.h.estill@icn.siemens.com			
	Long Beach Funders Collaborative	Liberty Hill Foundation	Metro Area		X			X		Julie	Meenan	(562) 437-2882	julie@gumbiner.com			
	AIDS Partnership California	Northern California Grantmakers	Entire State					X		John	Mortimer	(415) 777-5761	apc@ncg.org			
	Arts Loan Fund	Northern California Grantmakers	Metro Area		X					Alan	Levinson	(415) 777-5761	alevinson@ncg.org			
	Corporate Contributions Roundtable	Northern California Grantmakers	Metro Area							Janet	Bankovich	(415) 777-5761	jbankovich@ncg.org			
	Emergency Fund Committee	Northern California Grantmakers	Metro Area	X	X	X				Alan	Levinson	(415) 777-5761				
	Environmental Grantmakers Association West	Northern California Grantmakers	Part of State	X	X	X	X			Amy	Lyons	(415) 777-5761	ncg@ncg.org			
	Summer Youth Project	Northern California Grantmakers	Metro Area			X		X		Sandy	Fong	(415) 777-5761	sfong@ncg.org			
	Health Funders Partnership of Orange County	Orange County Community Foundation	Metro Area		X	X				Tori L.	O'Neal-McElrath	(714) 245-1658				
	Los Angeles Urban Funders	Project of Southern California Association for Philanthropy	Metro Area		X	X	X	X		Elwood	Hopkins	(213) 627-6387	scap@scap.org			
	San Luis Obispo County Funders Roundtable	San Luis Obispo County Community Foundation	Metro Area		X	X				Janice Fong	Wolf	(805) 543-2323	jwolf@slocfc.org			
	Bay Baundero	Sonoma County Community Foundation	Metro Area							Kay M.	Marquet	(707) 579-4073	kmarquet@sonomacf.org			
	Grants Managers Network, Bay Area Region	The James Irvine Foundation (rotates)	Metro Area	X	X	X	X		X	Ann	Clarke	(415) 356-9913	ann.clarke@irvine.org			
	Funders Group on Sustainable Agriculture	Tides Center	Entire State			X	X	X		Jill Kauffman	Johnson	(415) 421-4213	jill@ceaconsulting.com			



General Information				Activities Offered L=listserve N=networking mtgs I=information sharing E=ed. programming F=coordinated funding C=conferences							Primary Contact			
State	Funder Network	Network Host Organization	Geographic Coverage	L	N	I	E	F	C	First Name	Last Name	Work Phone	Email	
CA	African Americans in Philanthropy - Southern California Chapter		Part of State				X		X	Alicia	Procello	(818) 593-6600		
	Asian American Pacific Islanders in Philanthropy - Southern California Chapter		Part of State	X			X			Lina	Paredes	(310) 453-3611	lparedes@libertyhill.org	
	Hispanics in Philanthropy - Southern Ca. Chapter		Part of State	X			X			Mercy	Siordia	(818) 593-6600		
CO	Colorado Association of Foundations	The Denver Foundation	Entire State		X	X	X			Marlene A.	Casini	(303) 300-1790	mcasini@denverfoundation.org	
CT	New England Technical Assistance Providers Group		Multi-State	X		X				Annemarie	Riemer	(860) 548-1888	hfpg2@hfpg.org	
	Connecticut Community Foundations Network	Connecticut Council on Philanthropy	Entire State							Nancy P.	Roberts	(860) 525-5585	ccp@ctphilanthropy.org	
	Greater Danbury Funders Group	Fairfield County Community Foundation and United Way to Northern Fairfield County	Metro Area	X		X	X			Marty	Milkovic	(203) 792-5330		
	Family Foundations Network of Southern Connecticut	Tow Foundation	Part of State							Emily Tow	Jackson	(203) 614-6600	towjackson@aol.com	
	Danbury Funders Group	United Way of Northern Fairfield County	Metro Area							June	Renzulli	(203) 792-5330		
DC	Jewish Foundation Advisory Council		Metro Area							Erica	Draff	(301) 230-7200		
	Jewish Philanthropy Fund		Metro Area					X		Erica	Draff	(301) 230-7200		



General Information				Activities Offered L=listserv N=networking mtgs I=information sharing E=ed. programming F=coordinated funding C=conferences							Primary Contact			
State	Funder Network	Network Host Organization	Geographic Coverage	L	N	I	E	F	C	First Name	Last Name	Work Phone	Email	
DC	The Initiative to Strengthen Inter-Group Assets	Community Foundation for the National Capital Region	Metro Area		X	X		X		Lee Christian	Parker	(202) 955-5890	lparker@cfncr.org	
	Washington Area Partnership for Immigrants Network	Community Foundation for the National Capital Region	Metro Area		X	X	X			Lee Christian	Parker	(202) 955-5890	lparker@cfncr.org	
	Grants Managers Network	Meyer Foundation	Metro Area	X	X	X	X		X	Steven	Munoz	(202) 483-8294	smunoz@meyerfdn.org	
	Organizational Effectiveness working group	Washington Grantmakers	Metro Area		X	X	X			Kae	Dakin	(202) 939-3441	dakin@washingtongrantmakers.org	
	Arts and Humanities working group	Washington Grantmakers	Metro Area		X	X	X	X		Kae	Dakin	(202) 939-3441	dakin@washingtongrantmakers.org	
	CEO Leadership peer affinity group	Washington Grantmakers	Metro Area		X	X				Kae	Dakin	(202) 939-3441	dakin@washingtongrantmakers.org	
	Children, Youth, and Families working group	Washington Grantmakers	Metro Area		X	X	X			Kae	Dakin	(202) 939-3441	dakin@washingtongrantmakers.org	
	Coalition to Mobilize Giving	Washington Grantmakers	Metro Area	X						Elizabeth	Miller	(202) 939-3440	miller@washingtongrantmakers.org	
	Community Development Support Collaborative	Washington Grantmakers	Metro Area		X		X		X	Mary	Mellet	(202) 296-4582	mmellet@liscnet.org	
	Corporate Funders affinity group	Washington Grantmakers	Metro Area		X					Kae	Dakin	(202) 939-3441	dakin@washingtongrantmakers.org	
	Family Foundations affinity group	Washington Grantmakers	Metro Area		X	X	X			Kae	Dakin	(202) 939-3441	dakin@washingtongrantmakers.org	
	Health working group	Washington Grantmakers	Metro Area		X	X	X			Kae	Dakin	(202) 939-3441	dakin@washingtongrantmakers.org	
	Northern Virginia Funders	Washington Grantmakers	Part of State		X	X	X			Kae	Dakin	(202) 939-3441	dakin@washingtongrantmakers.org	
	Public Education Working Group	Washington Grantmakers	Metro Area		X	X	X			Kae	Dakin	(202) 939-3441	dakin@washingtongrantmakers.org	



General Information				Activities Offered L=listserve N=networking mtgs I=information sharing E=ed. programming F=coordinated funding C=conferences										Primary Contact			
State	Funder Network	Network Host Organization	Geographic Coverage	L	N	I	E	F	C	First Name	Last Name	Work Phone	Email				
DC	Smart growth & Livable Communities working group	Washington Grantmakers	Metro Area	X	X	X	X			Kae	Dakin	(202) 939-3441	dakin@washingtongrantmakers.org				
	Washington AIDS Partnership	Washington Grantmakers	Metro Area			X		X		Channing	Wickam	(202) 939-3380	johnchanii@aol.com				
	Montgomery County Funders Roundtable	Washington Grantmakers/Community Foundation of Montgomery County	Metro Area	X	X	X	X			Kae	Dakin	(202) 939-3441	dakin@washingtongrantmakers.org				
DE	Delaware Donors Forum	Delaware Community Foundation	Entire State	X	X					Kim	Fortunato	(302) 571-8004	kff@diamondnet.org				
FL	Florida Philanthropic Network		Entire State	X	X	X	X			Alma	Ayala	(727) 528-3761	aayala@aya.yale.edu				
	Funders Forum of Tampa Bay		Metro Area							Sheff	Crowder	(813) 282-4922	sheff.crowder@commfoundation.com				
	Philanthropy Non Profit Leadership Center		Entire State							Sherry	Abbott	(407) 975-6414	PNLC@rollins.edu				
	Round Table		Metro Area							Lynne	Cameron	(305) 593-8402	camerol@wfor.cbs.com				
	Florida Federation of Community Foundations	Community Foundation of Broward	Entire State							Linda	Carter	(954) 761-9503					
	Grantmakers Association	Community Foundation of Collier County	Metro Area	X	X	X		X		Mary	George	(941) 649-5000	smkgeorge@att.net				
	Jacksonville Donors Forum	Jacksonville Community Foundation	Metro Area	X	X			X		Nina	Waters	(904) 356-4483	nwaters@jaxcf.org				
	Florida Funders	Leadership rotates; usually meets in Orlando	Entire State							Joanne	Lighter	(727) 507-9668	jolighter@franciscanfdh.org				
	Donors Forum of Central Florida	Philanthropy and Nonprofit Leadership Center	Part of State	X	X	X	X	X		Kim	Whitehurst	(407) 975-6414	kwhitehurst@rollins.edu				



General Information				Activities Offered L=listserve N=networking mtgs I=information sharing E=ed. programming F=coordinated funding C=conferences												Primary Contact			
State	Funder Network	Network Host Organization	Geographic Coverage	L	N	I	E	F	C	First Name	Last Name	Work Phone	Email						
GA	Atlanta Corporate Donors Group	Bank of America Foundation	Metro Area	X	X	X	X			Sallie	Daniel	(404) 607-5246	sallie.daniel@bankofamerica.com						
	Macon Council of Foundations	Leadership rotates	Metro Area	X	X	X	X			Juanita	Jordan	(478) 743-5359	jtjordan@mylink.net						
	Atlanta Foundations Forum	Southeastern Council of Foundations	Metro Area	X			X			Jane	Hardesty	(404) 524-0911	jane@secf.org						
	Georgia Council of Community Foundations	Southeastern Council of Foundations	Entire State	X	X	X	X	X		James	Mathis	(770) 535-7880	jmathis@mgcf.org						
HI	The Hui of Grantmakers	Hawaii Community Foundation	Entire State	X				X	X	Lisa	Schifs	(808) 537-6333	lschifs@hcf-hawaii.org						
IA	Central Iowa Contributions Consortium		Metro Area	X	X					Michele	Walstrom	(515) 248-3172							
	Funders of United Way	United Way of the Quad Cities Area	Metro Area							Kimberly	Findley	(563) 355-4310							
ID	Boise Contributions Managers Group	Leadership rotates monthly	Metro Area	X	X	X	X	X	X	Connie	Weaver	(208) 384-7673	connie_weaver@bc.com						
IL	Chicago African-Americans in Philanthropy		Metro Area							Tim	Russell	(312) 558-8378	trussell@saralee.com						
	Chicago Corporate Contributions Committee		Metro Area							Tim	Phillips	(312) 240-7515							
	Chicago Latinos in Philanthropy		Metro Area							David	Pesqueira	(312) 222-3512	dpesqueira@tribune.com						
	Jews in Philanthropy		Metro Area							Merri	Ex	(312) 372-3356	merriex@cct.org						
	Rockford Area Grantmakers		Metro Area							Gloria	Lundin	(815) 962-2110	glundin@cfnil.org						
	Small Schools Funders Group	Chicago Community Trust	Metro Area	X				X		Pat	Ford	(312) 372-3356							



General Information				Activities Offered L=listserv N=networking mtgs I=information sharing E=ed. programming F=coordinated funding C=conferences							Primary Contact			
State	Funder Network	Network Host Organization	Geographic Coverage	L	N	I	E	F	C	First Name	Last Name	Work Phone	Email	
IL	Arts and Culture Funders Group	Donors Forum of Chicago	Metro Area	X	X		X			Robin	Berkson	(312) 578-0090	robin@donorsforum.org	
	Associate Members Peer Network	Donors Forum of Chicago	Metro Area	X	X	X	X			Valerie	Lies	(312) 578-0090	valerie@donorsforum.org	
	CEO Peer Exchange	Donors Forum of Chicago	Metro Area		X	X				Valerie	Lies	(312) 578-0090	valerie@donorsforum.org	
	Chicago Grantmakers for Effective Organizations	Donors Forum of Chicago	Metro Area		X	X	X			Valerie	Lies	(312) 528-0090	valerie@donorsforum.org	
	Community Building Task Force	Donors Forum of Chicago	Metro Area	X			X			Robin	Berkson	(312) 578-0090	robin@donorsforum.org	
	Corporate Committee	Donors Forum of Chicago	Metro Area	X	X		X			Robin	Berkson	(312) 578-0090	robin@donorsforum.org	
	Education Group	Donors Forum of Chicago	Metro Area	X	X		X			Robin	Berkson	(312) 578-0090	robin@donorsforum.org	
	Family Foundations Committee	Donors Forum of Chicago	Metro Area	X	X		X		X	Valerie	Lies	(312) 578-0090	valerie@donorsforum.org	
	Fund for Immigrants & Refugees	Donors Forum of Chicago	Metro Area				X	X		Alice	Cottingham	(312) 578-0090	alice@donorsforum.org	
	Giving Greater Chicago	Donors Forum of Chicago	Metro Area	X	X		X			Kassie	Davis	(312) 263-4936	kassie@donorsforum.org	
	Grantmakers Concerned with Homelessness	Donors Forum of Chicago	Metro Area	X	X	X	X			Robin	Berkson	(31) 578-0090	robin@donorsforum.org	
	Grantmakers Concerned with Immigrants and Refugees	Donors Forum of Chicago	Metro Area	X	X		X		X	Robin	Berkson	(312) 578-0090	robin@donorsforum.org	
	Grants Managers Peer Network	Donors Forum of Chicago	Metro Area	X	X	X				Robin	Berkson	(312) 578-0090	robin@donorsforum.org	
	Group on Funding Lesbian and Gay Issues	Donors Forum of Chicago	Metro Area	X	X		X		X	Robin	Berkson	(312) 578-0090	robin@donorsforum.org	



General Information				Activities Offered L=listserv N=networking mtgs I=information sharing E=ed. programming F=coordinated funding C=conferences							Primary Contact			
State	Funder Network	Network Host Organization	Geographic Coverage	L	N	I	E	F	C	First Name	Last Name	Work Phone	Email	
IL	Health Program Affinity Group	Donors Forum of Chicago	Metro Area	X	X	X	X			Robin	Berkson	(312) 578-0090	robin@donorsforum.org	
	North Suburban Peer Network	Donors Forum of Chicago	Metro Area		X					Robin	Berkson	(312) 578-0090	robin@donorsforum.org	
	Peer Network for New Grantmakers	Donors Forum of Chicago	Metro Area	X	X	X	X			Robin	Berkson	(312) 578-0090	robin@donorsforum.org	
	Poverty Task Force	Donors Forum of Chicago	Metro Area	X	X		X			Robin	Berkson	(312) 578-0090	robin@donorsforum.org	
	West Suburban Peer Network	Donors Forum of Chicago	Metro Area		X	X				Robin	Berkson	(312) 578-0090	robin@donorsforum.org	
	Youth Development Task Force	Donors Forum of Chicago	Metro Area	X	X		X			Robin	Berkson	(312) 578-0090	robin@donorsforum.org	
	Asian American Pacific Islanders in Philanthropy - Chicago	Promotion of Philanthropy Institute	Metro Area	X	X					Alice	Lee	(312) 263-4937	alice@donorsforum.org	
IN	Bartholomew County Foundations	Heritage Fund of Bartholomew County	Metro Area		X	X		X		Sherry	Stark	(812) 376-7772	hfpres@kiva.net	
	Family Foundation Forum	Indiana Grantmakers Alliance	Metro Area							Eileen	Ryan			
	Central Indiana Program Officers	Indiana Grantmakers Alliance (Admin.)	Metro Area		X					Melanie	Audette	(317) 630-5200	maudette@ingrantomakers.org	
	Southwestern Indiana Grantmakers		Part of State		X	X	X			Marjorie	Soyugenc	(812) 437-8260	info@welbornfdn.org	
KY	Lexington Donors Forum	Blue Grass Community Foundation	Metro Area		X	X				Susanna	Creek	(859) 225-3343	screek@bgcf.org	
	Donors Forum of Metro Louisville		Metro Area		X	X	X			Mason	Rummel	(502) 896-2440		
LA	Community Catalysts	Community Foundation of Shreveport-Bossier	Metro Area			X	X	X		Quintin T.	Hardtner, IV	(318) 425-7745	qth@worldnet.att.net	
	Private Foundations and Donor Advised Fund Donors	Community Foundation of Shreveport-Bossier	Metro Area	X	X	X	X		X	Dorothy B.	Gwin	(318) 221-0582	gwin@comfoundsb.org	



General Information				Activities Offered L=listserv N=networking mtgs I=information sharing E=ed. programming F=coordinated funding C=conferences												Primary Contact			
State	Funder Network	Network Host Organization	Geographic Coverage	L	N	I	E	F	C	First Name	Last Name	Work Phone	Email						
LA	Southern Louisiana Grantmakers	Greater New Orleans Foundation	Metro Area	X	X	X	X			Ben	Johnson	(504) 598-4663	benj@gnof.org						
MA	Asian-American Pacific Islanders in Philanthropy		Entire State	X	X	X	X			Cathy	Cha	(617) 426-5600							
	Fund for Nonprofits Partnerships in the Boston Public Schools		Metro Area	X	X	X		X		David	Simon	(617) 566-2124	dfsimon@bellatlantic.net						
	Grantmakers Without Borders, Boston-Area		Multi-State	X	X	X	X		X	John	Harvey	(617) 794-2253	gwob@att.net						
	Mass. Net Steering Committee		Entire State							Marc	Osten	(413) 549-0014	mosten@summitcollaborative.com						
	Merrimack Valley Funders Group		Part of State							Elizabeth	Beland	(978) 688-7211							
	The Givers Group		Metro Area							Kevin	Soyt	(617) 426-2606	ksoyt@agmconnect.org						
	Associated Grant Makers Community Foundation Roundtable	Associated Grant Makers	Entire State	X	X	X	X			Rebecca	Houston	(617) 426-2606	ksoyt@agmconnect.org						
	Associated Grant Makers Family Foundation Roundtable	Associated Grant Makers	Metro Area	X	X	X	X			Rebecca	Huston	(617) 426-2606	rhuston@agmconnect.org						
	Associated Grant Makers Summer Fund	Associated Grant Makers	Metro Area					X		Stephanie	Cheney	(617) 426-2606	scheney@agmconnect.org						
	Boston Education Funders	Associated Grant Makers, Fiscal Agent	Metro Area	X	X	X	X			Lallie	Lloyd	(781) 861-2010	lallie.lloyd@rcn.com						
	Cambridge Funders	Cambridge Community Foundation	Metro Area	X	X	X	X			Robert	Huribut	(617) 576-9966	cambridgecf@igc.org						
	Cape Cod Funders	Community Foundation of Cape Cod	Metro Area	X	X	X			X	Elizabeth	Gawron	(508) 790-3040	egawron@capecodfoundation.org						
	Hestia Fund	Giving New England, project of Associated Grant Makers	Metro Area		X	X	X	X	X	Susan	Priem	(617) 227-5180	hestiafund@aol.com						



General Information				Activities Offered L=listserve N=networking mtgs I=information sharing E=ed. programming F=coordinated funding C=conferences												Primary Contact			
State	Funder Network	Network Host Organization	Geographic Coverage	L	N	I	E	F	C	First Name	Last Name	Work Phone	Email						
MA	Worcester Foundation Forum	Greater Worcester Community Foundation	Metro Area	X	X	X	X			Ann	Lisi	(508) 755-0980	atlisi@greaterworcester.org						
	Gifts Users Group	Philanthropic Advisors, LLC	Metro Area	X	X					Aurora	Wilber	(617) 574-6557	awilber@philanthropicadvisors.com						
	Greater Boston Funders Supporting Women and Girls		Metro Area				X			Cynthia	Mesh, Ph.D	(781) 396-0082	cmesh@aya.yale.edu						
	Human Services Personnel Collaborative/The Diversity Initiative		Metro Area							Tyra	Sidberry	(617) 523-6565							
	Management Consulting Services		Metro Area							Diane	Gordon	(617) 556-0099	dgordon@tmfnet.org						
MD	Baltimore Giving Project	Association of Baltimore Area Grantmakers	Metro Area	X	X					Buffy	Beaudoin Schwartz	(410) 727-0719	bgp@abagmd.org						
	Baltimore Neighborhood Collaborative	Association of Baltimore Area Grantmakers	Metro Area		X	X		X		Ann	Sherrill	(410) 727-0169	bnc@abagmd.org						
	Education Funders Affinity Group	Association of Baltimore Area Grantmakers	Metro Area	X	X	X	X	X		Frances	van Voorhis	(410) 727-1205	francesv@abagmd.org						
	Funders for Evaluation & Effectiveness	Association of Baltimore Area Grantmakers	Metro Area	X	X	X	X			Tracey	Rutnik	(410) 727-1205	trutnik@abagmd.org						
	Maryland Community Foundations	Association of Baltimore Area Grantmakers	Entire State	X	X					Betsy	Nelson	(410) 727-1205	bnelson@abagmd.org						
	Maryland Service Funding Collaborative	Association of Baltimore Area Grantmakers	Metro Area		X		X	X		Cathy	Brill	(410) 254-4424	cbrill@umd5.umd.edu						
ME	Maine Funders for Change		Entire State		X	X	X	X		Deb	Felder	(207) 622-6294	meinit@gwi.net						
MI	Funders Roundtable		Metro Area							Brenda L.	Hunt	(616) 962-2181	brenda@bccfoundation.org						



General Information				Activities Offered L=listserv N=networking mtgs I=information sharing E=ed. programming F=coordinated funding C=conferences										Primary Contact		
State	Funder Network	Network Host Organization	Geographic Coverage	L	N	I	E	F	C	First Name	Last Name	Work Phone	Email			
MI	Detroit Area Grantmakers	Council of Michigan Foundations	Metro Area	X						Jeri Fischer	Fischer	(616) 842-7080	jfischer@cmif.org			
	Evaluation Funders	Council of Michigan Foundations	Entire State							Wendy Jackson	Jackson	(616) 454-1751				
	Land Use Funders	Council of Michigan Foundations	Entire State	X	X	X	X	X	X	Rob Collier	Collier	(616) 842-7080	cmf@cmif.org			
	Michigan Grantmakers in Aging	Council of Michigan Foundations	Entire State							Glenn Kossick	Kossick	(313) 965-4220				
	Michigan K-12 Education Funders	Council of Michigan Foundations	Entire State							Kathy Agard	Agard	(231) 767-3100				
	Michigan Women in Philanthropy	Council of Michigan Foundations	Entire State							Brenda Hunt	Hunt	(616) 962-2181				
	Saginaw Bay Watershed Initiative Network (WIN)	Independent incorporated nonprofit.	Part of State	X	X	X	X	X	X	Mike Kelly	Kelly	(989) 662-6024	mkelly@svsu.edu			
MN	Grantors Alliance		Metro Area							Peggy Hanson	Hanson	(218) 722-5642				
	Grant Managers Network	Minnesota Council on Foundations	Entire State	X	X	X	X	X	X	Sandy Moses	Moses	(512) 335-3418	smoses@mcf.org			
	Grantmakers Interested in Organizational Effectiveness	Minnesota Council on Foundations	Entire State	X	X	X	X	X	X	Melissa Eystad	Eystad	(512) 335-3418	meystad@mcf.org			
	Minnesota Council on Foundations Technology Network	Minnesota Council on Foundations	Entire State	X	X	X	X	X	X	Melissa Eystad	Eystad	(512) 335-3418	meystad@mcf.org			
	Program Officers Network	Minnesota Council on Foundations	Entire State		X	X				Sandy Moses	Moses	(512) 335-3418	smoses@mcf.org			
	Senior Community Affairs Professionals (SCAP)	Minnesota Council on Foundations	Entire State	X	X	X				Melissa Eystad	Eystad	(512) 335-3418	meystad@mcf.org			



General Information				Activities Offered										Primary Contact			
State	Funder Network	Network Host Organization	Geographic Coverage	L	N	I	E	F	C	First Name	Last Name	Work Phone	Email				
				L=listserv N=networking mtgs I=information sharing E=ed. programming F=coordinated funding C=conferences													
MN	Asian-American Pacific Islanders in Philanthropy	National AAPIP	Entire State	X	X	X	X	X	X	Kari	Suzuki	(651) 312-3565	kssuzuki@bremer.com				
	Hispanics in Philanthropy	Otto Bremer Foundation	Entire State	X	X	X	X	X	X	Elsa	Vega-Perez	(651) 227-8036	evega-perez@bremer.com				
	Regional Funders of SE and Southcentral Minnesota	Southern Minnesota Initiative Foundation	Part of State	X	X					Trixie Ann	Golberg	(507) 455-3215					
MO	Children Youth & Families	Metropolitan Association for Philanthropy	Metro Area	X	X	X	X			Cindy	Follman	(314) 621-6220	cmf@mapstl.org				
	Corporate Roundtable	Metropolitan Association for Philanthropy	Metro Area	X	X	X	X			Cindy	Follman	(314) 621-6220	cmf@mapstl.org				
	Family Foundation Roundtable	Metropolitan Association for Philanthropy	Metro Area	X	X	X	X			Cindy	Follman	(314) 621-6220	cmf@mapstl.org				
	Gateway to Giving	Metropolitan Association for Philanthropy	Metro Area	X	X	X		X		Kathy	Doellefeld-Clancy	(314) 621-6220	kdc@mapstl.org				
	K-12 Education	Metropolitan Association for Philanthropy	Metro Area	X	X	X	X			Cindy	Follman	(314) 621-6220	cmf@mapstl.org				
	Neighborhood Funders	Metropolitan Association for Philanthropy	Metro Area	X	X	X	X			Cindy	Follman	(314) 621-6220	cmf@mapstl.org				
	New Americans	Metropolitan Association for Philanthropy	Metro Area	X	X	X	X			Cindy	Follman	(314) 621-6220	cmf@mapstl.org				
	Social Venture Partners St. Louis	Regional Business Council and the community foundation	Metro Area					X		Kathy	Osborn	(314) 206-8071	kosborn@stlrbc.org				
	St. Louis Grantmakers in Health		Metro Area			X				Fred	Bleeke	(314) 231-2244	fred@lcfstl.org				



General Information				Activities Offered L=listserv N=networking mtgs I=information sharing E=ed. programming F=coordinated funding C=conferences							Primary Contact		
State	Funder Network	Network Host Organization	Geographic Coverage	L	N	I	E	F	C	First Name	Last Name	Work Phone	Email
MS	Mississippi Donors Forum		Entire State							Mike	Clayborne	(662) 844-8989	mike@createfoundation.com
	Mid South Collaborative to Promote Philanthropy	Foundation for the Mid South	Multi-State							George	Penick	(601) 355-8167	gpenick@fndmidsouth.org
MT	Montana Grantmakers Gathering	Montana Community Foundation	Entire State	X		X				Karen	Pimchack	(406) 256-5780	planner@mcn.net
NC	North Carolina Association of Community Foundations		Entire State							Walker	Sanders	(336) 379-9100	wsanders@cfgg.org
	North Carolina Network of Grantmakers		Entire State	X		X	X			Tony	Pipa	(919) 530-8842	
	Gaston County Private Foundations	Community Foundation of Gaston County	Metro Area	X		X				John	Edgerton	(704) 864-0927	cfgaston@perigee.net
	Guilford County Grantmakers	Community Foundation of Greater Greensboro	Metro Area	X		X	X			Walker	Sanders	(336) 379-9100	info@cfgg.org
	Charlotte Area Donors Forum	Foundation for the Carolinas, rotating chair	Metro Area	X						Marilyn	Bradbury	(704) 376-9541	mbradbury@fftc.org
	Donors Forum of Forsyth County	Leadership rotates annually	Metro Area	X		X	X			Scott F.	Wierman	(336) 725-2382	swierman@wsfoundation.org
	Greensboro Grantmakers Alliance/ Association	North Carolina Association of Community Foundations	Entire State	X		X	X	X		Walker	Sanders	(336) 379-9100	wsanders@cfgg.org
	Triangle Donors Forum	Triangle Community Foundation	Part of State							Darryl	Lester	(919) 549-9840	
ND	Funders Network (Fargo, ND & Moorhead, MN)	Fargo-Moorhead Area Foundation	Metro Area							Jan	Stewart	(701) 234-0756	
NE	Heartland Council of Community Foundations		Entire State	X		X				Chandler	Tyrrell	(402) 474-2345	chant@lcf.org



General Information				Activities Offered L=listserve N=networking mtgs I=information sharing E=ed. programming F=coordinated funding C=conferences												Primary Contact			
State	Funder Network	Network Host Organization	Geographic Coverage	L	N	I	E	F	C	First Name	Last Name	Work Phone	Email						
NH	New Hampshire Health Grantmakers	Leadership rotates	Entire State	X	X	X	X			Jeanne	Ryer	(603) 225-6641	jr@nhcf.org						
NJ	Trenton Funders' Collaborative	Council of New Jersey Grantmakers	Metro Area	X		X		X				(609) 341-2022	brambo@tesc.edu						
	Northern New Jersey Corporate Contributions Group		Part of State									(609) 341-2022							
NY	Investors Support Group		Metro Area							Mike	Moots	(716) 483-1561							
	The Latino Funds Collaborative		Multi-State	X	X	X	X			Lorraine	Cortes-Vazquez	(212) 233-8955	lorraine@hispanicfederati on.org						
	Joint Federation of Chautauqua County	Chautauqua Region Community Foundation	Metro Area	X	X					Randall J.	Sweeney	(716) 661-3390	crcf@crfonline.org						
	Grantmakers Alliance of Northeastern New York	Community Foundation for the Capital Region	Part of State	X	X	X	X			Maureen	Yee	(518) 446-9638	myee@cfr.org						
	Southern Tier Funders Group	Community Foundation of Elmira/Corning	Metro Area	X			X			Suzanne	Lee	(607) 734-6412	Leesuz42@aol.com						
	Grants Managers Network -- New York Region	Leadership rotates	Multi-State	X	X	X	X	X		Kyle	Reis	(212) 573-5146	k.reis@fordfound.org						
	New York Grantmakers in Aging	National Grantmakers in Aging	Metro Area	X	X	X	X			Barbara R.	Greenberg	(212) 501-7785	bgreenberg@al.com						
	Business and Officers Managers Network (BOM)	New York Regional Association of Grantmakers	Metro Area	X	X	X	X			Beverley	Samuda	(212) 714-0699	bsamuda@nyrag.org						
	Family Foundation Trustees Peer Network	New York Regional Association of Grantmakers	Metro Area	X	X	X	X			Marjorie	Rutimann	(212) 714-0699	mrutimann@nyrag.org						
	New York City Youth Funders Network	New York Regional Association of Grantmakers	Metro Area	X				X		Roderick	Jenkins	(212) 686-0010	youthfunders@thecloves.net						
	Funders Alliance of Upstate New York	Rochester Grantmakers Forum	Part of State	X	X	X	X		X	Liz	Wilder	(585) 232-2380	rgf@frontiernet.net						



General Information				Activities Offered L=listserv N=networking mtgs I=information sharing E=ed. programming F=coordinated funding C=conferences							Primary Contact			
State	Funder Network	Network Host Organization	Geographic Coverage	L	N	I	E	F	C	First Name	Last Name	Work Phone	Email	
NY	Child Care and Early Education Fund	United Way of NYC	Metro Area	X	X	X		X		Amy	Taylor	(212) 251-2453	ataylor@uwnyc.org	
	Chautauqua Funders Group		Metro Area							Tom	Faber	(716) 487-1062	tfaber@gebbie.org	
	Early Childhood Funders Network		Metro Area	X	X			X		Patti	Lieberman	(212) 799-9611	ps1101cpw@msn.com	
	Emerging Practitioners in Philanthropy -- New York Group		Metro Area	X	X	X				Rusty	Stahl	(212) 573-4766	r.stahl@fordfound.org	
	Foundation Financial Managers Network		Metro Area	X	X	X				Karen	Byers	(212) 489-6655	kbyers@markle.org	
	Long Island Funders Group		Metro Area	X	X					Nathanael W.	Berry	(516) 379-6309	nwberry@srcfoundation.org	
	New York Grantmakers in the Arts		Metro Area	X						Darcy	Hector	(212) 288-8900	darcyrcf@aol.com	
	New York Women's Funders Group		Metro Area	X	X	X				Miriam	Buhl	(212) 226-2220	mbuhl@nywf.org	
OH	Evaluation Group of the Cincinnati Grantmakers		Metro Area	X	X	X		X		Ann	McCracken	(513) 458-6600		
	Warren County funders group		Metro Area							Bob	Elias	(513) 934-1001		
	Akron Foundations Group	Burton D. Morgan Foundation	Metro Area		X					John V.	Frank	(330) 258-6512		
	Foundation Executives of Lorain County	Community Foundation of Greater Lorain County	Metro Area	X	X	X		X	X	Brian	Frederick	(440) 277-0142	bfrederick@cfglc.org	
	Foundation Program Officers of Lorain County	Community Foundation of Greater Lorain County	Metro Area	X	X	X		X		Linda	Weaver	(440) 277-0142	loweaver@cfglc.org	
	Funders Collaborative for Appalachian Ohio	Foundation for Appalachian Ohio	Part of State	X	X	X		X		Leslie	Lilly	(740) 753-1111	llilly@ffao.org	



General Information				Activities Offered L=listserve N=networking mtgs I=information sharing E=ed. programming F=coordinated funding C=conferences							Primary Contact			
State	Funder Network	Network Host Organization	Geographic Coverage	L	N	I	E	F	C	First Name	Last Name	Work Phone	Email	
OH	Cincinnati Grantmakers group	Greater Cincinnati Foundation	Metro Area	X	X	X	X			E. Miles	Wilson	(513) 241-2880		
	Community foundations group	Oxford Community Foundation	Part of State							Robert J.	Elias	(513) 934-1001	eliaswcf@g-concepts.com	
	Stark County Foundations	Stark Community Foundation	Metro Area	X	X	X		X		Jim	Bower	(330) 454-3426	jbower@starkcf.org	
	Dayton Grantmakers group		Metro Area							Bill	Feldman	(937) 449-8963		
OK	Contributors Advisory Group	Oklahoma City Community Foundation	Metro Area	X	X	X	X			Nancy	Anthony	(405) 235-5603	nanthony@occf.org	
	Funders Roundtable	Tulsa Community Foundation	Metro Area	X	X	X	X	X		Phil	Lakin	(918) 494-8823		
	Grantmakers of Oklahoma		Entire State							Cheri D.	Cartwright	(405) 364-3703	sarkeys@telepath.com	
OR	Douglas County Funders Forum		Metro Area	X	X					Suzie	Johnston-Forte	(541) 672-1734	uway@rosenet.net	
	Community Investment Breakfast Group	PGE	Metro Area	X	X	X	X			Fred	Miller	(503) 464-8896	fred_miller@pgn.com	
PA	Berks Grantmakers	Berks Community Foundation	Metro Area	X	X		X			Richard	Mappin	(610) 685-2223	richardm@bccf.org	
	Chester County Funders	Chester County Community Foundation	Metro Area	X	X	X				Karen	Simmons	(610) 696-8211	karen@chescr.org	
	Lancaster County Funders	Closely affiliated with Delaware Valley Grantmakers	Metro Area							Bob	Haigh	(717) 397-8722	LOHF-bhaigh@lohfoundation.org	
	Lehigh Valley Funders	Closely affiliated with Delaware Valley Grantmakers	Part of State							Ed	Meehan	(610) 770-9346		
	Community Foundations for Pennsylvania	Community Foundations for Pennsylvania	Entire State							Sheila	Ross	(717) 233-0092	sheila@communityfoundations.org	



General Information				Activities Offered L=listserve N=networking mtgs I=information sharing E=ed. programming F=coordinated funding C=conferences							Primary Contact		
State	Funder Network	Network Host Organization	Geographic Coverage	L	N	I	E	F	C	First Name	Last Name	Work Phone	Email
PA	Health Conversion Foundations	Delaware Valley Grantmakers	Part of State	X	X	X				Dale	Mitchell	(215) 790-9700	dale@dvg.org
	The Health Guys and Gals	Leadership rotates	Part of State	X	X	X		X	X	Bob	Haigh	(717) 397-8684	bhaigh@lohfoundation.org
	Berks County Foundation Leaders and United way		Metro Area							Paul	Roedel	(610) 376-7494	
RI	Rhode Island funders mailing list	The Rhode Island Foundation	Entire State							Rick	Schwartz	(401) 274-4564	rschwartz@rifoundation.org
	Rhode Island Funders Project	The Rhode Island Foundation	Entire State	X	X	X				Susan	Kostas	(401) 274-4564	skostas@agmconnect.org
SC	South Carolina Association of Community Foundations	Central Carolina Community Foundation	Entire State	X	X	X	X	X	X	Mac	Bennett	(803) 254-5601	cccf@cccfsc.org
	Greenville Area Donors Forum	Community Foundation of Greater Greenville	Metro Area							Michelle	Schoen	(864) 233-5925	
	Grantmakers Network of South Carolina	Leadership rotates	Entire State	X	X	X				Thomas	Keith	(803) 254-0230	
SD	Funders Network	Sioux Falls Area Community Foundation	Metro Area	X	X	X				Sue	Brown	(605) 336-7055	sbrown@sfacf.org
	Sioux Falls Area Grantmakers	Sioux Falls Area Community Foundation	Metro Area	X	X	X				Sue	Brown	(605) 336-7055	
TN	Foundations Roundtable		Metro Area							Terry	Holley	(865) 524-1223	tholley@etf.org
	Memphis Grantmakers Forum	Community Foundation of Greater Memphis	Metro Area							Norris R.	Haynes, Jr.	(901) 761-9180	christian@plough.org
	Grantmakers Roundtable	East Tennessee Foundation	Metro Area	X	X	X		X	X	Terry	Holley	(423) 524-7223	tholley@etf.org
	Nashville Donors Group		Metro Area							J.D.	Elliot	(615) 859-6141	



General Information				Activities Offered L=listserv N=networking mtgs I=information sharing E=ed. programming F=coordinated funding C=conferences							Primary Contact		
State	Funder Network	Network Host Organization	Geographic Coverage	L	N	I	E	F	C	First Name	Last Name	Work Phone	Email
TX	Austin Foundation Group		Metro Area							Greg	Kozmetsky	(512) 474-9298	
	Dallas Contributors' Network	Dallas Foundation	Metro Area	X			X			Michelle	Monse	(214) 741-9898	mmonse@dallasfoundation.org
	Southeast Texas Grantmakers	Foundation for Southeast Texas	Part of State	X	X		X			Carol	Flatten	(409) 833-5775	foundationset@IH2000.net
	Greater Houston Grantmakers' Forum	Frees Foundation	Metro Area	X	X		X		X	Nancy	Frees Fountain	(713) 623-0515	freesfoundation@msn.com
VA	The Funder's Circle		Metro Area							Alan	Ronk	(540) 985-0204	frv@rev.net
	Donors Roundtable of Charlottesville-Albermarle	Charlottesville-Ablemarle Community Foundation	Metro Area	X	X			X		John	Redick	(804) 296-1024	cacp@stone.net
	Richmond Donors Forum	Community Foundation Serving Richmond and Central Virginia	Part of State		X					Robert	Thalheimer	(804) 330-7400	rthalheimer@tcfrichmond.org
	Community Foundations of Virginia	Leadership rotates	Entire State	X	X		X			Robert	Thalheimer	(804) 330-7400	rthalheimer@tcfrichmond.org
	Hampton Roads Donor Group	PGH Foundation	Metro Area	X	X					Alan	Goollihue	(757) 391-0000	pghfdn@pilot.infi.net
	Virginia Consortium for Health Philanthropy	The Community Foundation Serving Richmond and Central Virginia	Entire State							Kimberly	Smart	(540) 899-1492	ksmart@medicorpihn.com
WA	Whatcom Funders Roundtable		Metro Area							Don	Drake	(360) 671-6463	
	Pierce County Donors Roundtable Lunch	Greater Tacoma Community Foundation	Metro Area	X						Margy	McGroarty	(253) 383-5622	margy@gtcf.org
	Northwest Environmental Funders Group	One NW	Multi-State	X						n/a		(206) 286-1235	info@onenw.org
	Project Lift-Off Opportunity Fund	Philanthropy Northwest	Metro Area		X					Maria	Groen	(206) 770-9423	mgroen@PhilanthropyNW.org



General Information				Activities Offered L=listserv N=networking mtgs I=information sharing E=ed. programming F=coordinated funding C=conferences							Primary Contact			
State	Funder Network	Network Host Organization	Geographic Coverage	L	N	I	E	F	C	First Name	Last Name	Work Phone	Email	
WI	Marshfield Funder Coalition		Metro Area	X						Ann	Boson	(715) 389-4072		
	Rock County Funders		Metro Area		X					C. Pete Evans	Wanner	(608) 758-0883		
	Community Foundations of Wisconsin	Donors Forum of Wisconsin	Entire State							Karen	Gotzler	(414) 270-1978		
	Foster Care Funders	Donors Forum of Wisconsin	Metro Area	X						Linda	Davis	(262) 241-7769	davis127@aol.com	
	Nonprofit Management Fund	Greater Milwaukee Foundation	Metro Area	X	X	X	X	X	X	Pat	Wyzbinski	(414) 271-5511	fundadvisors@nonprofitmanagementfund.org	
	Faith Funders Network		Metro Area		X	X				Ron	Jones	(414) 257-2566	rdjslf@execpc.com	
WV	West Virginia Consortium of Community Foundations		Entire State							Debbie	Faber	(304) 324-0222		
	West Virginia Grantmakers Association		Entire State							Barbara	Boland	(304) 388-9860		



Appendix B. Study Committee Members

Valerie S. Lies (Chair)
President
Donors Forum of Chicago

Alison Wiley
President
Forum of Regional Associations of
Grantmakers

Alan Abramson
Director, Nonprofit Sector & Philanthropy
Program
The Aspen Institute

Audrey Alvarado
President
National Council of Nonprofit Associations

Elan Garonzik
Senior Program Officer
Charles Stewart Mott Foundation

Kendall Guthrie
Vice President
Blueprint Research & Design, Inc.

Martin Lehfelddt
President
Southeastern Council of Foundations

Sara Melendez
Former President
Independent Sector

Dorothy Ridings
President and CEO
Council on Foundations

Nancy Roberts
President
Connecticut Council for Philanthropy

Julie Rogers
President
Eugene and Agnes E. Meyer Foundation

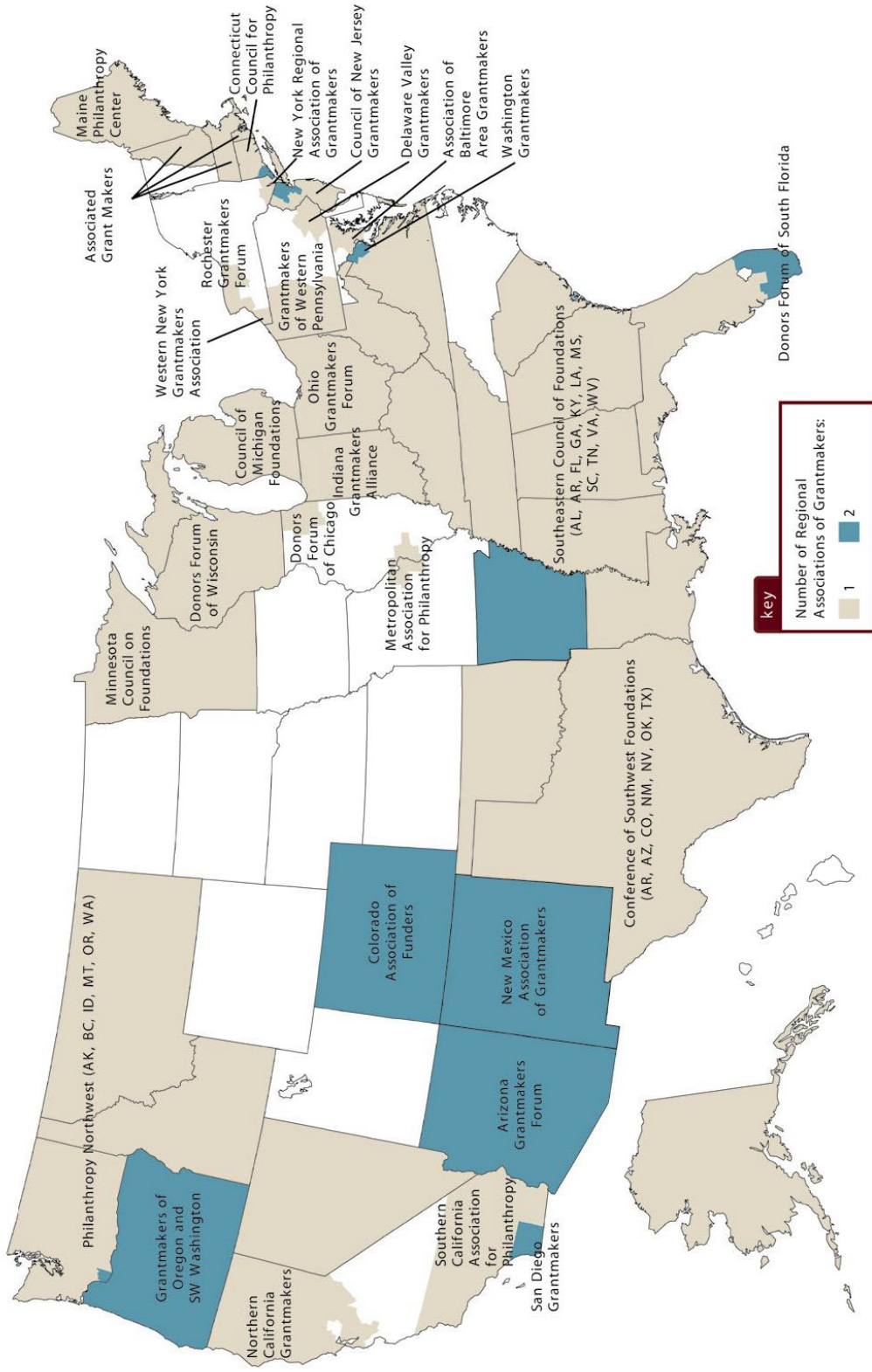
Charles Scott
Former Executive Director/CEO
Association of Small Foundations



Appendix C. Maps Depicting the Combined Coverage of Regional Associations and Funder Networks

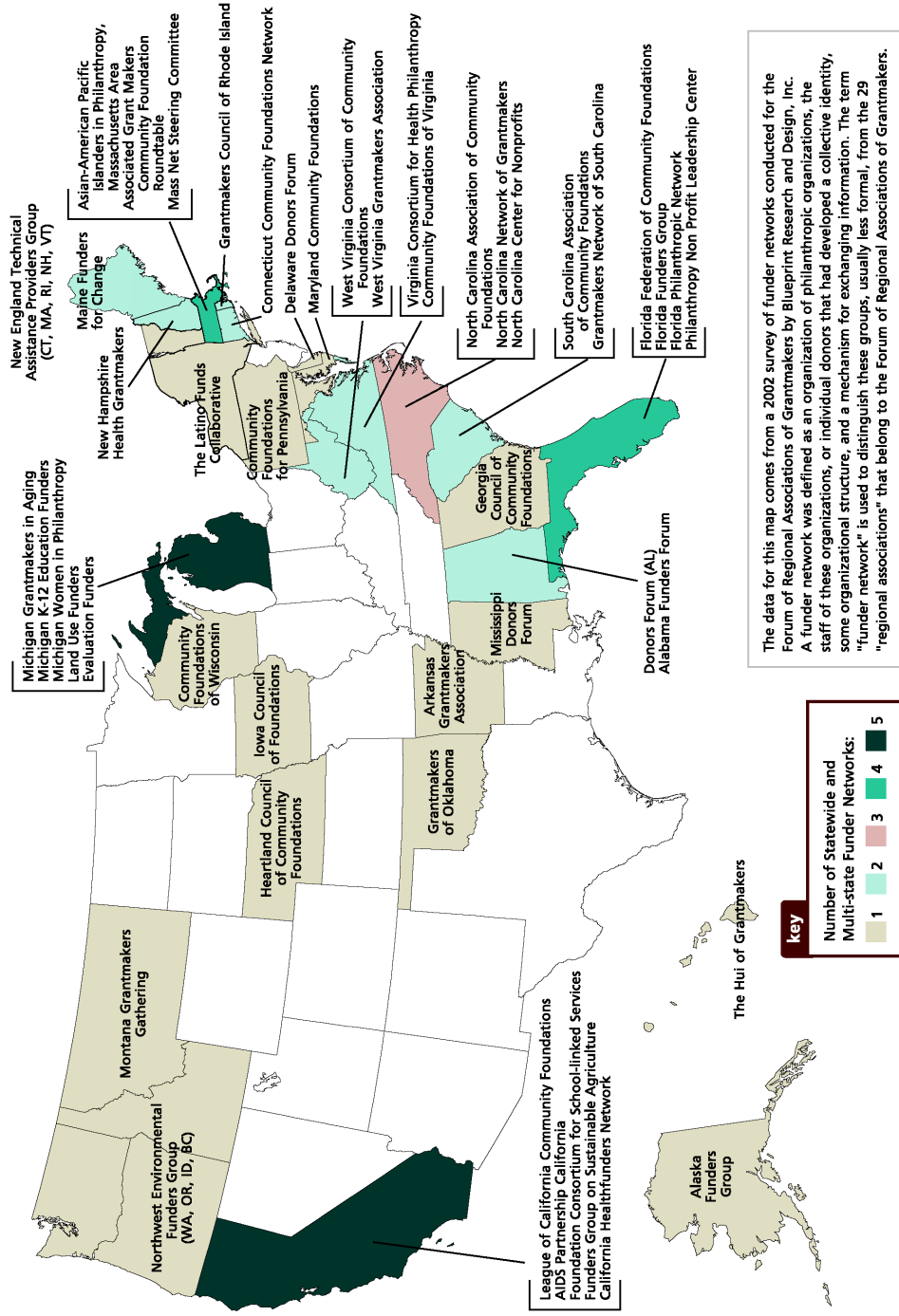
A. Regional Associations of Grantmakers

Combined Geographic Coverage of Regional Associations of Grantmakers



B. Statewide and Multi-state Funder Networks

Combined Geographic Coverage of Statewide and Multi-state Funder Networks

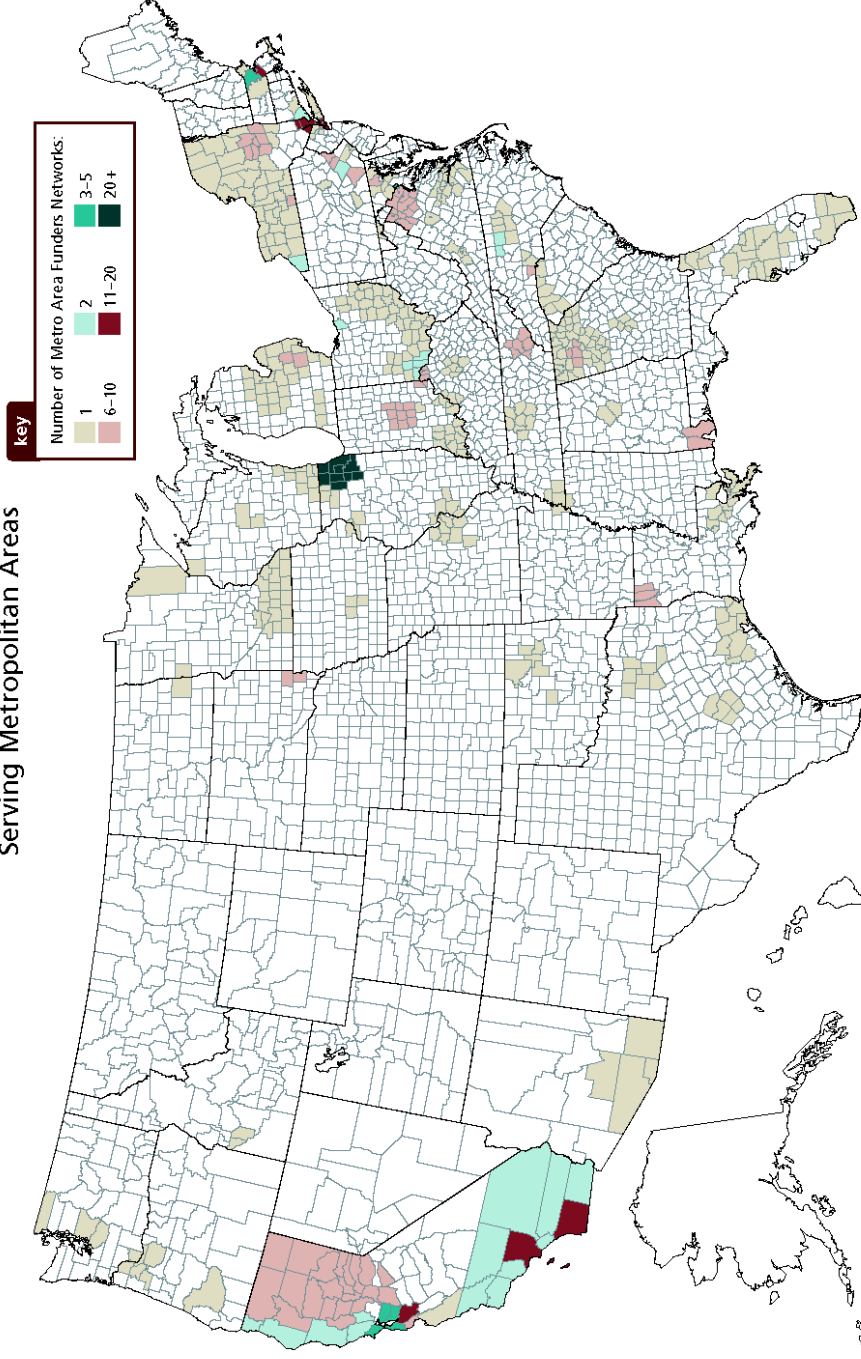


The data for this map comes from a 2002 survey of funder networks conducted for the Forum of Regional Associations of Grantmakers by Blueprint Research and Design, Inc. A funder network was defined as an organization of philanthropic organizations, the staff of these organizations, or individual donors that had developed a collective identity, some organizational structure, and a mechanism for exchanging information. The term "funder network" is used to distinguish these groups, usually less formal, from the 29 "regional associations" that belong to the Forum of Regional Associations of Grantmakers.



C. Metropolitan Networks

Combined Geographic Coverage of Funder Networks
Serving Metropolitan Areas

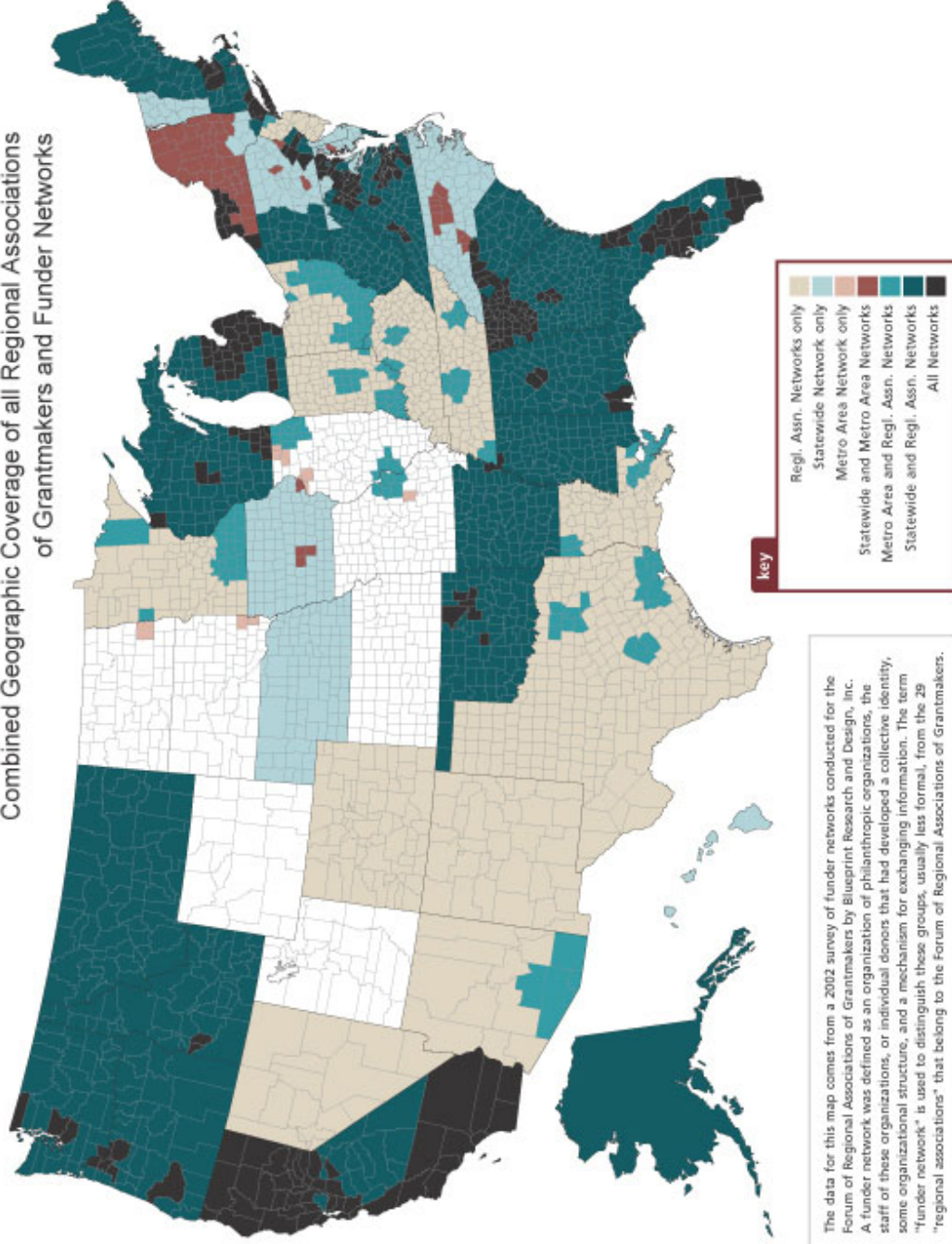


The data for this map comes from a 2002 survey of funder networks conducted for the Forum of Regional Associations of Grantmakers by Blueprint Research and Design, Inc. A funder network was defined as an organization of philanthropic organizations, the staff of these organizations, or individual donors that had developed a collective identity, some organizational structure, and a mechanism for exchanging information. The term "funder network" is used to distinguish these groups, usually less formal, from the 29 "regional associations" that belong to the Forum of Regional Associations of Grantmakers.



D. All Networks

Combined Geographic Coverage of all Regional Associations of Grantmakers and Funder Networks



The data for this map comes from a 2012 survey of funder networks conducted for the Forum of Regional Associations of Grantmakers by Blueprint Research and Design, Inc. A funder network was defined as an organization of philanthropic organizations, the staff of these organizations, or individual donors that had developed a collective identity, some organizational structure, and a mechanism for exchanging information. The term "funder network" is used to distinguish these groups, usually less formal, from the 29 "regional associations" that belong to the Forum of Regional Associations of Grantmakers.

