

Homicides in Oakland[©]

An Analysis of Homicides in Oakland 2003, 2004 and 2005



May 24, 2006

Prepared by:

Andrew Marx
Rachel Diggs
Junious Williams

Urban Strategies Council
www.Urbanstrategies.org

672 13th St.
Oakland, CA 94612

© 2006 Urban Strategies Council

For additional copies or permission to reprint, please contact the

Urban Strategies Council ♦ 672 13th Street ♦ Oakland, CA 94612

Phone: (510) 893-2404 ♦ *Fax:* (510) 893-6657 ♦ *E-mail:*

amindir@urbanstrategies.org

Web site: www.urbanstrategies.org

TABLE OF CONTENTS

INTRODUCTION	1
MOST COMMON CHARACTERISTICS OF 2005 OAKLAND HOMICIDES	2
Table A. Most Common Characteristics of Oakland Homicides, 2004 and 2005.....	2
I. Three-Year Oakland Homicide Trends.....	3
Table 1a. Total Homicides in Oakland, 2003-2004	3
Figure 1a. Total Homicides in Oakland, 2003-2005.....	3
II. Gender of Victims and Suspects	4
Table 2a. Oakland Homicides by Victim’s Gender, 2003-2005.....	4
Figure 2a. Oakland Homicides by Victim’s Gender, 2003-2005	4
Table 2b. Oakland Homicides by Suspect’s Gender, 2003-2005	5
Figure 2b. Oakland Homicides by Suspect’s Gender, 2005.....	5
III. Race of Victims and Suspects.....	6
Table 3a. Oakland Homicides by Victim’s Race, 2003-2005	6
Figure 3a. Oakland Homicides by Victim’s Race, 2003-2005	6
Table 3b. Oakland Homicides by Suspect’s Race, 2004 and 2005.....	7
Figure 3b. Oakland Homicides by Suspect’s Race, 2003-2005	7
IV. Age of Victims and Suspects.....	8
Table 4a. Oakland Homicides by Victim’s Age, 2003-2005	8
Figure 4a. Oakland Homicides by Victim’s Age, 2003-2005	8
Table 4b. Oakland Homicides by Suspect’s Age, 2003-2005	9
Figure 4b. Oakland Homicides by Suspect’s Age, 2003-2005.....	9
V. Parole and Probation Status of Victims and Suspects.....	10
Table 5a. Oakland Homicides by Parole/Probation Status of Victim, 2003-2005*	10
Table 5b. Oakland Homicides by Parole/Probation Status of Suspect, 2003-2005*	10
Figure 5a. Oakland Homicides by Parole/Probation Status of Victim, 2005	11
Figure 5b. Oakland Homicides by Parole/Probation Status of Suspect, 2005.....	11
VI. Month of Incident	12
Table 6a. Oakland Homicides by Month of Incident, 2003-2005	12
Figure 6a. Oakland Homicides by Month of Incident, 2003-2005	12
VII. Time of Day When Incidents Occurred	13
Table 7a. Oakland Homicides by Time of Day, 2003-05.....	13
Figure 7a. Oakland Homicides by Time of Day, 2003- 2005	13
VIII. Neighborhoods Where Incidents Occurred.....	14
Table 8a. Oakland Homicides by Neighborhood, 2003-2004	14
Figure 8a. Oakland Homicides by Neighborhood, 2004-2005	14
Figure 8b. Map of Oakland Homicides by Neighborhood, 2004-2005	15
IX. City Council Districts Where Incidents Occurred	16
Table 9a. Oakland Homicides by City Council District, 2003-2005	16
Figure 9a. Oakland Homicides by City Council District, 2003-2005.....	16
Figure 9b. Map of Oakland Homicides by City Council District, 2004-2005	17
X. Police Service Areas Where Incidents Occurred	18
Table 10a. Oakland Homicides by Police Service Area (PSA), 2003-2005	18
Figure 10a. Oakland Homicides by Police Service Area (PSA), 2004-2005	18
Figure 10b. Map of Oakland Homicides by Police Service Area (PSA), 2004-2005.....	19
XI. Methods of Death.....	20

Table 11a. Oakland Homicides by Method of Death, 2003-2005	20
Figure 11a. Oakland Homicides by Method of Death, 2003-2005	20
XII. Twenty-Year Oakland Homicide Trends	21
Table 12a. Twenty Year Oakland Homicide Trends*	21
Figure 12a. Twenty-Year Oakland Homicide Trends 1985-2005	22
Appendix A. Additional Analyses	23
Table A1. Oakland Homicides by Police Beat, 2004-2005	23
Figure A1. Map of Oakland Homicides by Police Beat, 2004-2005	25
Sources	26

Homicides in Oakland

May 24, 2006

INTRODUCTION

This report summarizes changes in specific characteristics of homicides over the past three years, such as victim/suspect demographic characteristics, locations and methods of the crimes and the parole/probation status of victims and suspects. In addition to presenting annual data for 2003, 2004, and 2005, the tables and figures in this report show how characteristics of the homicides changed from year to year and over the three-year period.

In general there was an overall homicide increase of 7% from 2004 (88 homicides) to 2005 (94 homicides). While this increase does represent a troubling trend, total homicides remain well below the 20 year average of 111.8 homicides per year, and represents a decrease of 17% from 2003.

Demographic trends also appear to have shifted from 2004 to 2005 for both the victims and suspects. The percentage of Black victims and suspects dropped from 2004, while Latino and Asian victims and suspects both increased. The number of identified Latino homicide suspects is especially troubling, rising from 7 in 2004 to 13 in 2005. Finally, the number of suspects who were known to be on probation/parole status decreased from 59% to 49%.

MOST COMMON CHARACTERISTICS OF 2005 OAKLAND HOMICIDES

The table below summarizes the most common characteristics of Oakland homicides in 2004 and 2005. The reader should note that these characteristics do not describe all—and in some cases not even the majority—of Oakland homicides.

Table A. Most Common Characteristics of Oakland Homicides, 2004 and 2005

	Most Common Characteristics 2004	Percent of Total	Most Common Characteristics 2005	Percent of Total
Victim				
Gender	Male	85%	Male	94%
Race	Black	77%	Black	66%
Age (Years)	25 to 34	32%	18 to 24	32%
Probation/Parole Status	On Neither	59%	On Neither	61%
Suspect				
Gender	Male	84%	Male	79%
Race	Black	84%	Black	62%
Age (Years)	18 to 25	26%	25 to 34	19%
Probation/Parole Status ¹	On Neither	59%	On Neither	49%
Time, Location, Method				
Month	May/December	16%	December	13%
Time of Day	10 pm to 6 am	55%	10 pm to 6 am	48%
City Council District	District 7	34%	District 3	22%
Neighborhood	Elmhurst	34%	Elmhurst	25%
Police Beat	6x	9%	7x	9%
Method of Death	Gunshot	73%	Gunshot	85%

¹ This percent is for cases where the probation/parole status of suspect is known; see Table 5b for details.

I. Three-Year Oakland Homicide Trends

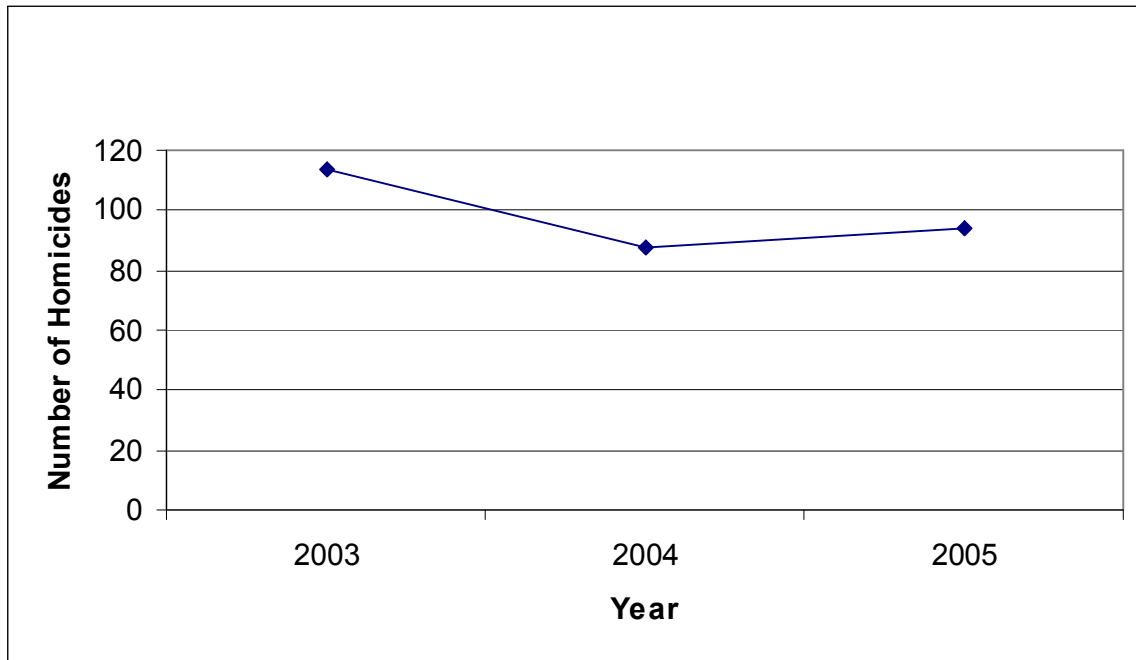
- Oakland homicides for the three-year period peaked at 114 in 2003, and declined by 18% in this three-year period to 94 in 2005.²

Table 1a. Total Homicides in Oakland, 2003-2004

	2003	2004	2005	Annual Percent Change		Total Percent Change
	Count	Count	Count	2003-2004	2004-2005	2003-2005
Total Homicides	114	88	94	-22.8	6.8	-17.5

*See Table 12A for analysis of homicide rates per 100,000 population.

Figure 1a. Total Homicides in Oakland, 2003-2005



² "Total Percent Change" in each table represents the change in the *raw number* of homicides from 2003 to 2005. In some instances, a category being measured may decrease in raw number of incidents, but make up an increased proportion of the overall number of homicides in each year. In viewing percentage changes, the reader should also review the raw numbers. When the raw numbers are small, they can yield large percentage changes.

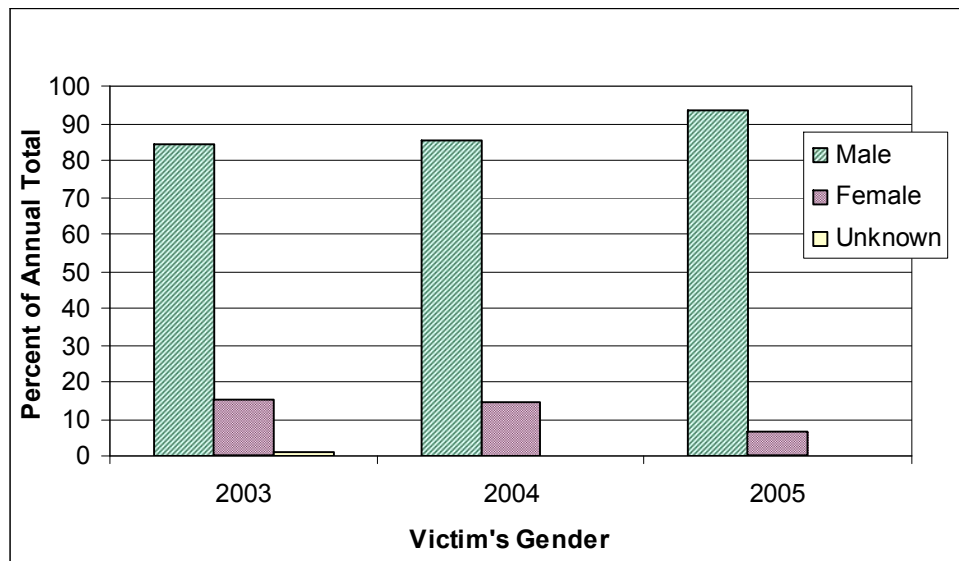
II. Gender of Victims and Suspects

- More than eight out of ten homicide victims were males in each of the three years.
- The percent of female victims decreased by 53.8 % between 2004 and 2005 and by 64.7% over the three-year period..

Table 2a. Oakland Homicides by Victim's Gender, 2003-2005

Victim's Gender	2003		2004		2005		Annual Percent Change		Total Percent Change
	Count	Percent of Total	Count	Percent of Total	Count	Percent of Total	2003-2004	2004-2005	2003-2005
Male	96	84.2	75	85.2	88	93.6	-21.9	17.3	-8.3
Female	17	14.9	13	14.8	6	6.4	-23.5	-53.8	-64.7
Gender Unknown	1	0.9	0	0.0	0	0.0	-100.0	0	-100.0
Total	114	100.0	88	100.0	94	100.0	-22.8	6.8	-17.5

Figure 2a. Oakland Homicides by Victim's Gender, 2003-2005

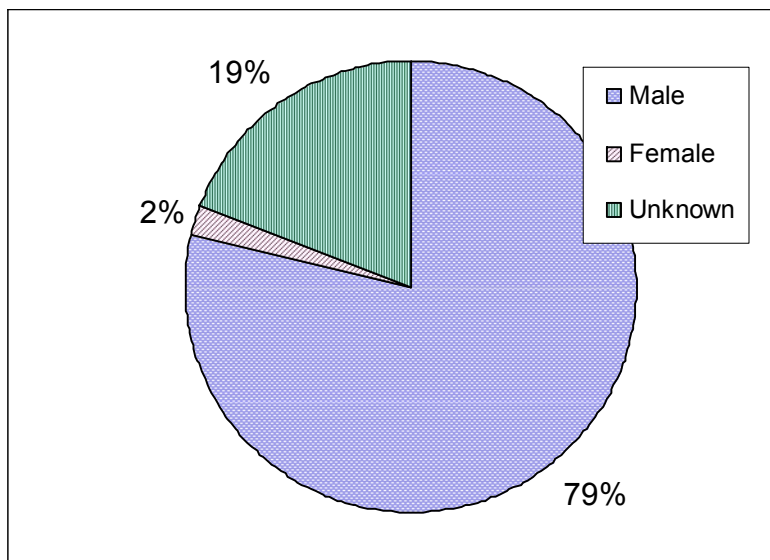


- In 2005, 94% of suspects were identified as male while only 2 % were identified as female.
- Because there were no unknown suspects in 2003, and 12% of cases in 2004 and 19% of cases in 2005 were unknown, no longitudinal analysis was conducted for Suspect Gender.

Table 2b. Oakland Homicides by Suspect's Gender, 2003-2005

Suspect's Gender	2003		2004		2005	
	Count	Percent of Total	Count	Percent of Total	Count	Percent of Total
Male	96	84.2	74	84.1	74	78.7
Female	18	15.8	3	3.4	2	2.1
Suspect Unknown	0	0.0	11	12.5	18	19.1
Total	114	100.0	88	100.0	94	100.0

Figure 2b. Oakland Homicides by Suspect's Gender, 2005



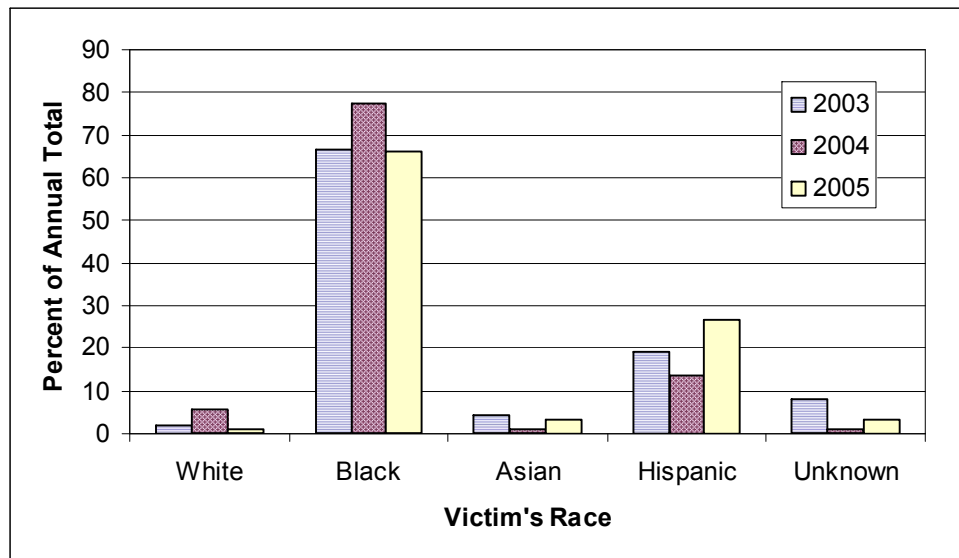
III. Race of Victims and Suspects

- In all three years, the majority of homicide victims were Black. The proportion of victims that were Black increased from 67% in 2003 to 77% in 2004 and then decreased to 66% in 2005.
- The proportion of victims that were Hispanic increased from 13.6 % in 2004 to 26.6 % in 2005. In the three-year period of 2003 to 2005, the percent of Hispanic homicide victims increased by 13.6 %, the largest increase of any ethnic or racial group.

Table 3a. Oakland Homicides by Victim's Race, 2003-2005

Victim's Race	2003		2004		2005		Annual Percent Change		Total Percent Change
	Count	Percent of Total	Count	Percent of Total	Count	Percent of Total	2003-2004	2004-2005	2003-2005
Black	76	66.7	68	77.3	62	65.9	-10.5	-8.8	-18.4
Hispanic	22	19.3	12	13.6	25	26.6	-45.5	108.3	13.6
White	2	1.8	5	5.7	1	1.1	150.0	-80.0	-50.0
Asian	5	4.4	1	1.1	3	3.2	-80.0	200.0	-40.0
Native American	N/A	N/A	1	1.1	N/A	N/A	N/A	N/A	N/A
Unknown	9	7.9	1	1.1	3	3.2	-88.9	200.0	-66.7
Total	114	100.0	88	98.9	94	100.0	-22.8	6.8	-17.5

Figure 3a. Oakland Homicides by Victim's Race, 2003-2005

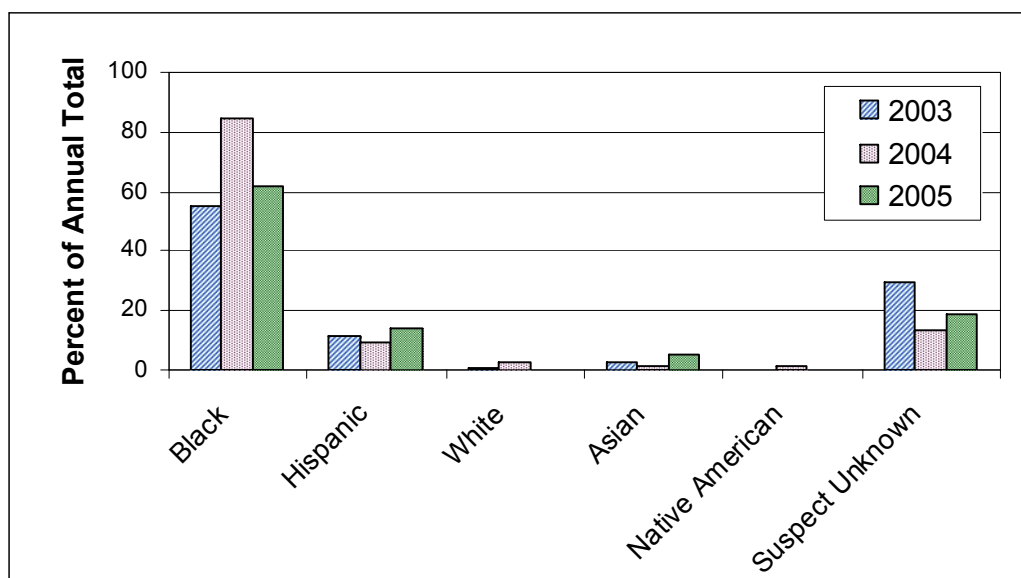


- In 2005, 62% of suspects were identified as Black, and 14% were identified as Hispanic.
- The proportion of Black suspects ranges from 55.3% to 84.4% but is likely affected by the proportion of unknown cases.

Table 3b. Oakland Homicides by Suspect's Race, 2004 and 2005

Suspect's Race	2003		2004		2005		Annual Percent Change		Total Percent Change
	Count	Percent of Total	Count	Percent of Total	Count	Percent of Total	2003-2004	2004-2005	2003-2005
Black	63	55.3	65	84.4	58	61.7	3.2	-10.8	-7.9
Hispanic	13	11.4	7	9.1	13	13.8	-46.2	85.7	0.0
White	1	0.9	2	2.6	0	0.0	100.0	-100.0	-100.0
Asian	3	2.6	1	1.3	5	5.3	-66.7	400.0	66.7
Native American	0	0.0	1	1.3	0	0.0	N/A	N/A	N/A
Unknown	34	29.8	12	13.6	18	19.1	-64.7	50.0	-47.1
Total	114	100.0	88	100.0	94	100.0	-22.8	6.8	-17.5

Figure 3b. Oakland Homicides by Suspect's Race, 2003-2005



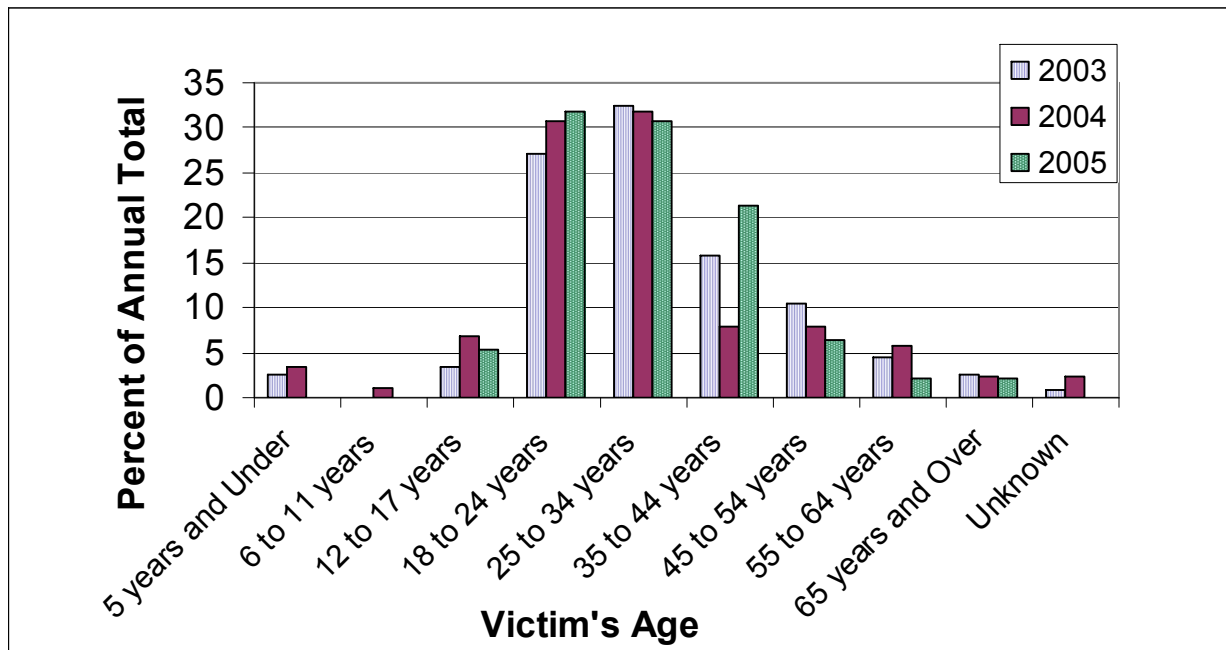
IV. Age of Victims and Suspects

- In all three years, approximately 60% of victims were between the ages of 18 and 34.
- The percent of victims between 12 and 17 increased by 25 % between 2003 and 2005, but involved only a two-case change.

Table 4a. Oakland Homicides by Victim's Age, 2003-2005

Victim's Age	2003		2004		2005		Annual Percent Change		Total Percent Change
	Count	Percent of Total	Count	Percent of Total	Count	Percent of Total	2003-2004	2004-2005	2003-2005
5 Years & Under	3	2.6	3	3.4	0	0.0	0.0	-300.0	-300.0
6 to 11 Years	0	0.0	1	1.1	0	0.0	100.0	-100.0	0.0
12 to 17 Years	4	3.5	6	6.8	5	5.3	50	-16.7	25.0
18 to 24 Years	31	27.2	27	30.7	30	31.9	-12.9	11.1	-3.2
25 to 34 Years	37	32.5	28	31.8	29	30.9	-24.3	3.6	-21.6
35 to 44 Years	18	15.8	7	8.0	20	21.2	-61.1	185.7	11.1
45 to 54 Years	12	10.5	7	8.0	6	6.4	-41.7	-14.3	-50.0
55 to 64 Years	5	4.4	5	5.7	2	2.1	0.0	-60.0	-60.0
65 Years & Over	3	2.6	2	2.3	2	2.1	-33.3	0.0	-33.3
Unknown	1	0.9	2	2.3	0	0.0	100.0	-200.0	-100.0
Total	114	100.0	88	100.0	94	99.9	-22.8	6.8	-17.5

Figure 4a. Oakland Homicides by Victim's Age, 2003-2005

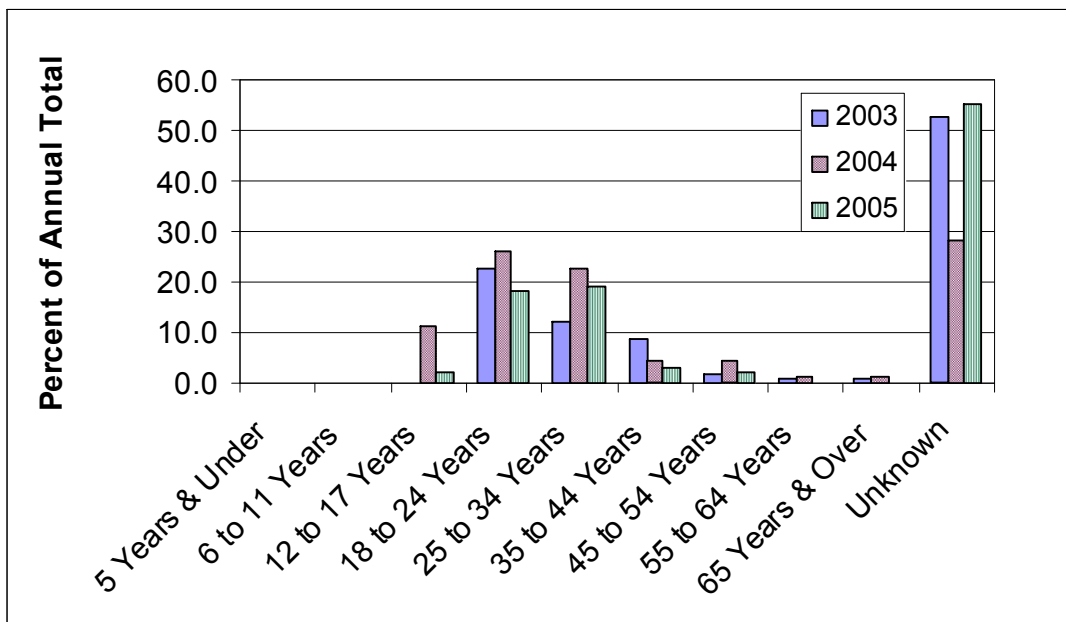


- In 2005 37% of the suspects were identified as being between the ages of 18 and 35.
- Note that the majority of cases in 2003 and 2005 the age of the suspect is unknown.

Table 4b. Oakland Homicides by Suspect's Age, 2003-2005

Suspect's Age	2003		2004		2005		Annual Percent Change		Total Percent Change
	Count	Percent of Total	Count	Percent of Total	Count	Percent of Total	2003-2004	2004-2005	2003-2005
5 Years & Under	0	0.0	0	0.0	0	0.0	N/A	N/A	N/A
6 to 11 Years	0	0.0	0	0.0	0	0.0	N/A	N/A	N/A
12 to 17 Years	0	0.0	10	11.4	2	2.1	N/A	-80.0	N/A
18 to 24 Years	26	22.8	23	26.1	17	18.1	-11.5	-26.1	-34.6
25 to 34 Years	14	12.3	20	22.7	18	19.1	42.9	-10.0	28.6
35 to 44 Years	10	8.8	4	4.5	3	3.2	-60.0	-25.0	-70.0
45 to 54 Years	2	1.8	4	4.5	2	2.1	100.0	-50.0	0.0
55 to 64 Years	1	0.9	1	1.1	0	0.0	0.0	-100.0	-100.0
65 Years & Over	1	0.9	1	1.1	0	0.0	0.0	-100.0	-100.0
Unknown	60	52.6	25	28.4	52	55.3	-58.3	108.0	-13.3
Total	114	100.0	88	100.0	94	100.0	-22.8	6.8	-17.5

Figure 4b. Oakland Homicides by Suspect's Age, 2003-2005



V. Parole and Probation Status of Victims and Suspects

- For 2005, approximately 61% of homicide victims were on neither parole nor probation,

Table 5a. Oakland Homicides by Parole/Probation Status of Victim, 2003-2005*

Parole/Probation Status	2003 Victims		2004 Victims		2005 Victims	
	Count	% of Known Total	Count	% of Known Total	Count	% of Known Total
On Neither Parole nor Probation	67	60	51	59	57	61
On Parole and/or Probation	43	39	36	41	37	39
On Parole Only	9	8.1	10	11.5	9	9.6
On Probation Only	32	28.8	21	24.1	26	27.7
On Parole and Probation	2	1.8	5	5.7	3	3.2
Unknown	3	N/A	1	N/A	0	N/A
Total	114		88		94	

- In 2005, 49% of known homicide suspects were on parole and/or probation status.

Table 5b. Oakland Homicides by Parole/Probation Status of Suspect, 2003-2005*

Parole/Probation Status	2003 Suspects		2004 Suspects		2005 Suspects	
	Count	% of Known Total	Count	% of Known Total	Count	% of Known Total
On Neither Parole nor Probation	25	46	27	59	21	49
On Parole and/or Probation	29	54	19	41	22	51
On Parole Only	13	24	7	15	10	23
On Probation Only	15	28	8	17	12	28
On Parole and Probation	1	2	4	9	0	0
Unknown	60	N/A	42	N/A	51	N/A
Total	114		88		94	

*Caution: Percent of Known Victims and Suspects only includes cases known. For example, in 2005 only 51 of 94 suspects were unknown, which means 46% of suspects have been identified for whom parole/probation status could be determined. Also in 2004 52% of the suspects were known and in 2003 47% of the suspects were known.

Note: The total percent of victims on parole and/or probation cannot be added to the total percent of suspects on parole and/or probation to determine the total percent of homicides that involved parolees and/or probationers. To simply add those percentages would assume there were no homicides in which both the suspect and victim were on parole and/or probation.

Figure 5a. Oakland Homicides by Parole/Probation Status of Victim, 2005

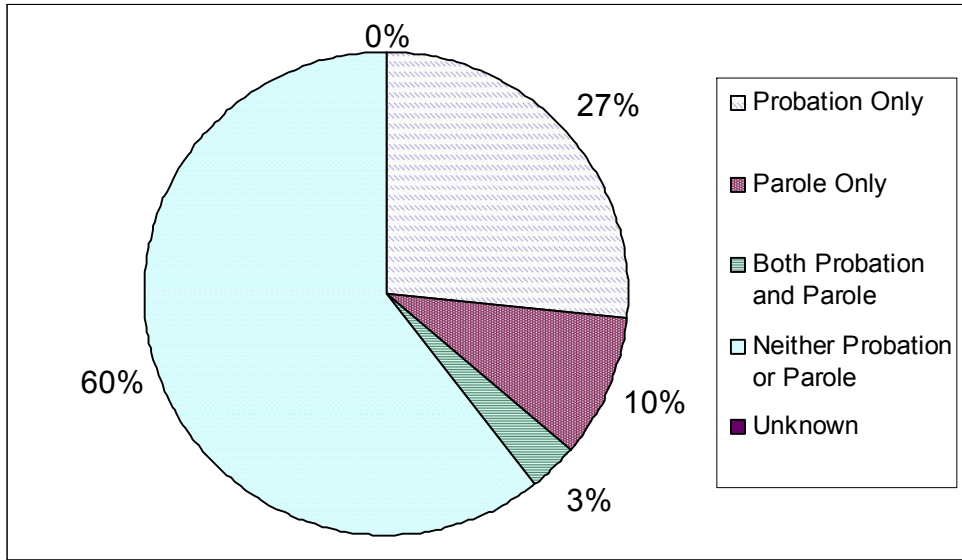
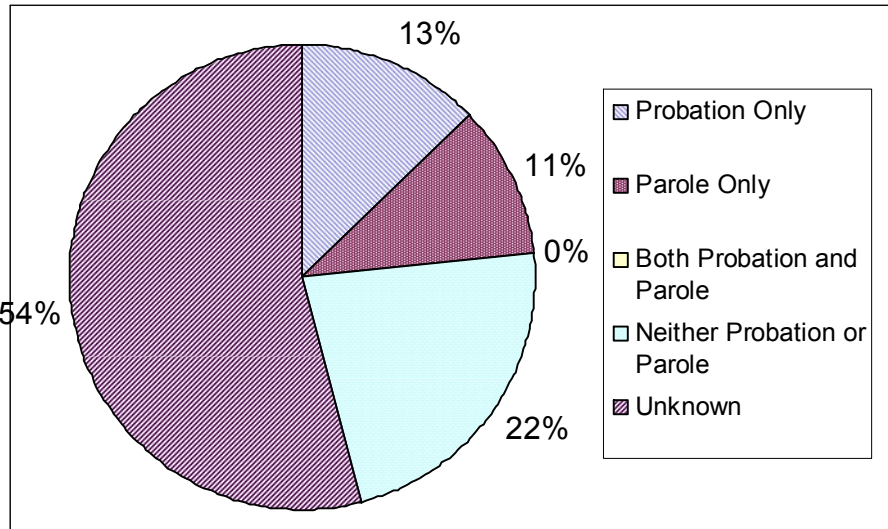


Figure 5b. Oakland Homicides by Parole/Probation Status of Suspect, 2005



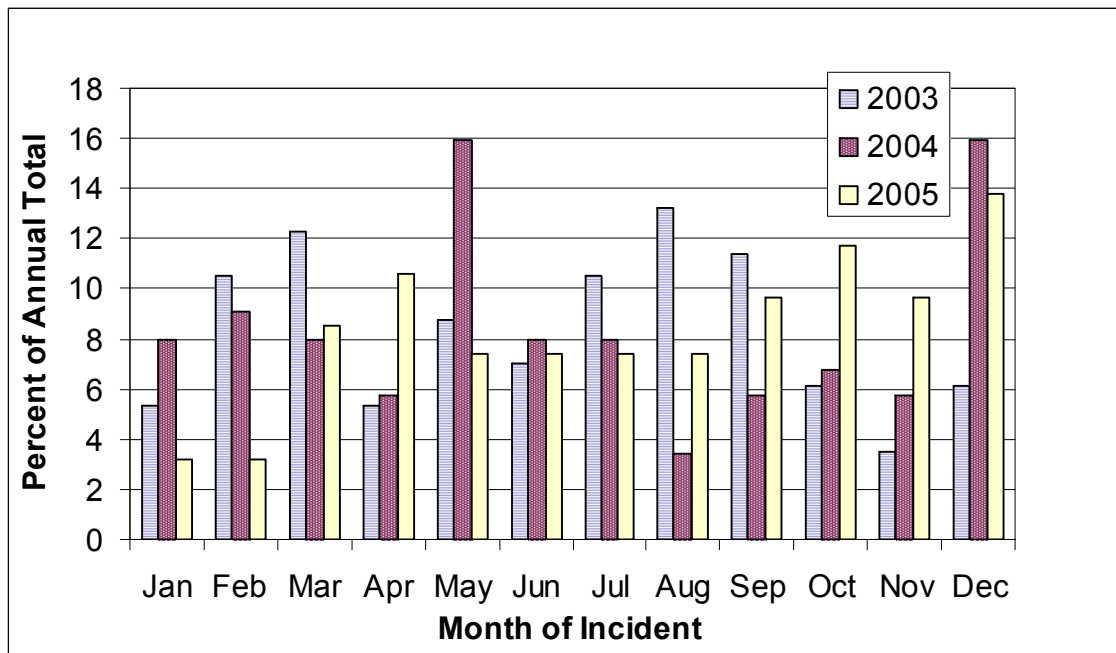
VI. Month of Incident

- In 2005 there was a slightly more even distribution of homicides each month. While in 2004, 32% of homicides occurred in May and December (16% in each), in 2005, April, October, September, November and December all had between 9.5% to 14% of the homicides.

Table 6a. Oakland Homicides by Month of Incident, 2003-2005

Month of Incident	2003		2004		2005		Annual Percent Change		Total Percent Change
	Count	Percent of Total	Count	Percent of Total	Count	Percent of Total	2003-2004	2004-2005	2003-2005
January	6	5.3	7	8.0	3	3.1	16.7	-57.1	-50.0
February	12	10.5	8	9.1	3	3.1	-33.3	-62.5	-75.0
March	14	12.3	7	8.0	8	8.5	-50.0	14.3	-42.9
April	6	5.3	5	5.7	10	10.6	-16.7	100.0	66.7
May	10	8.8	14	15.9	7	7.4	40.0	-50.0	-30.0
June	8	7.0	7	8.0	7	7.4	-12.5	0.0	-12.5
July	12	10.5	7	8.0	7	7.4	-41.7	0.0	-41.7
August	15	13.2	3	3.4	7	7.4	-80.0	133.3	-53.3
September	13	11.4	5	5.7	9	9.5	-61.5	80.0	-30.8
October	7	6.1	6	6.8	11	11.5	-14.3	83.3	57.1
November	4	3.5	5	5.7	9	9.5	25.0	80.0	125.0
December	7	6.1	14	15.9	13	13.8	100.0	-7.1	85.7
Total	114	100.0	88	100.0	94	100.0	-22.8	6.8	-17.5

Figure 6a. Oakland Homicides by Month of Incident, 2003-2005



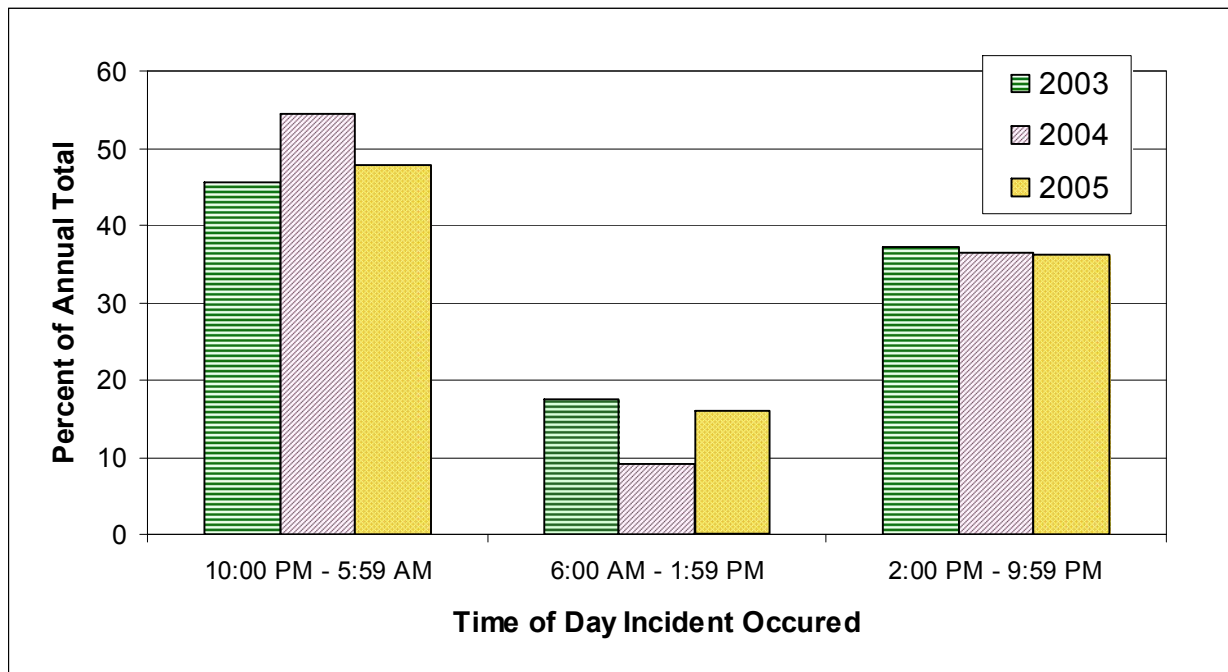
VII. Time of Day When Incidents Occurred

- 48 % of homicides in 2005 occurred between the hours of 10pm and 6am.
- An additional 36% occurred between 2pm and 10pm.

Table 7a. Oakland Homicides by Time of Day, 2003-05

Time Block of Homicide	2003		2004		2005	
	Count	Percent of Total	Count	Percent of Total	Count	Percent of Total
10:00 PM - 5:59 AM	52	45.6	48	54.5	45	47.9
6:00 AM - 1:59 PM	20	17.5	8	9.1	15	15.9
2:00 PM - 9:59 PM	42	37.2	32	36.4	34	36.2
Total	114	99.9	88	100.0	94	100.0

Figure 7a. Oakland Homicides by Time of Day, 2003- 2005



VIII. Neighborhoods Where Incidents Occurred

- In 2004, 53% of homicides occurred in Elmhurst (34%) and West Oakland (19%). Fruitvale and Central East Oakland each contributed between 10% and 16% of citywide homicides, respectively.
- In 2005, Central East Oakland and San Antonio saw the greatest increases in homicides compared to the rest of the city, increasing from 14% to 19% and 8% to 15%, respectively. The proportion of homicides occurring in North Oakland, the Northeast Hills and the Southeast Hills increased slightly.

Table 8a. Oakland Homicides by Neighborhood, 2003-2004

Neighborhood	2004		2005		Annual Percent Change	Annual Change in Count
	Count	Percent of Total	Count	Percent of Total	2004-2005	2004-2005
Central East Oakland	14	15.9	19	20.2	35.7	5
Chinatown and Central	3	3.4	5	5.3	66.7	2
Elmhurst	30	34.1	23	24.5	-23.3	-7
Fruitvale	9	10.2	8	8.5	-11.1	-1
Lower Hills	5	5.7	0	0.0	-100.0	-5
North Oakland	3	3.4	5	5.3	66.7	2
Northeast Hills	0	0.0	1	1.1	N/A	1
San Antonio	7	8.0	15	15.9	114.3	8
Southeast Hills	0	0.0	1	1.1	N/A	1
West Oakland	17	19.3	17	18.1	0.0	0
Total	88	100.0	94	100.0	6.8	6

Figure 8a. Oakland Homicides by Neighborhood, 2004-2005

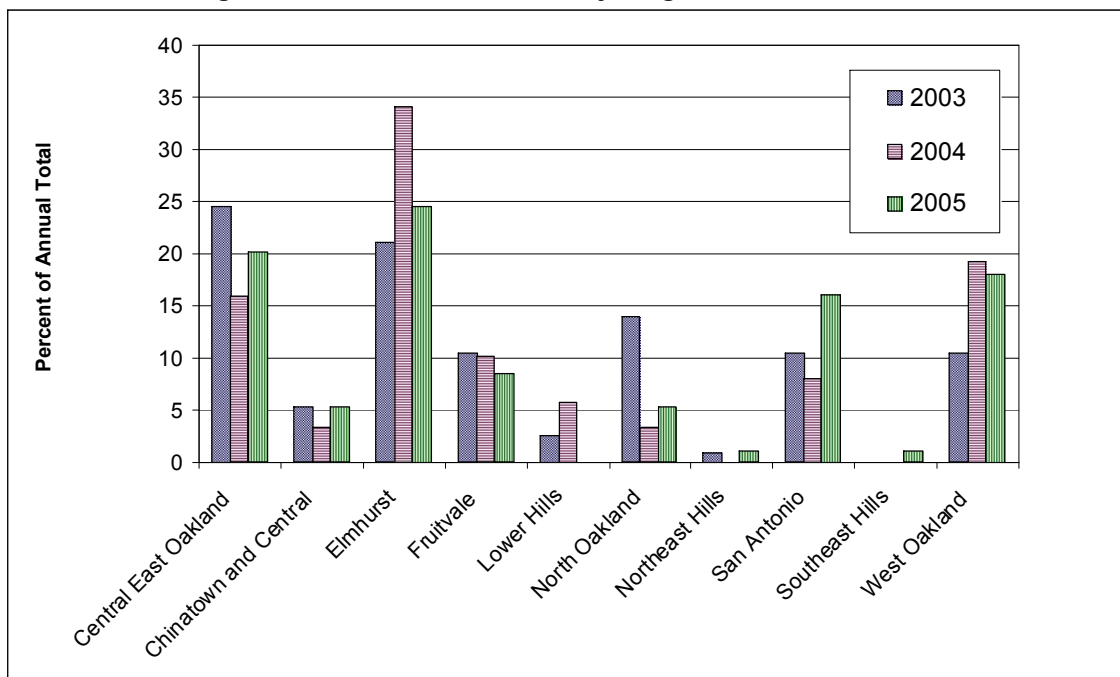
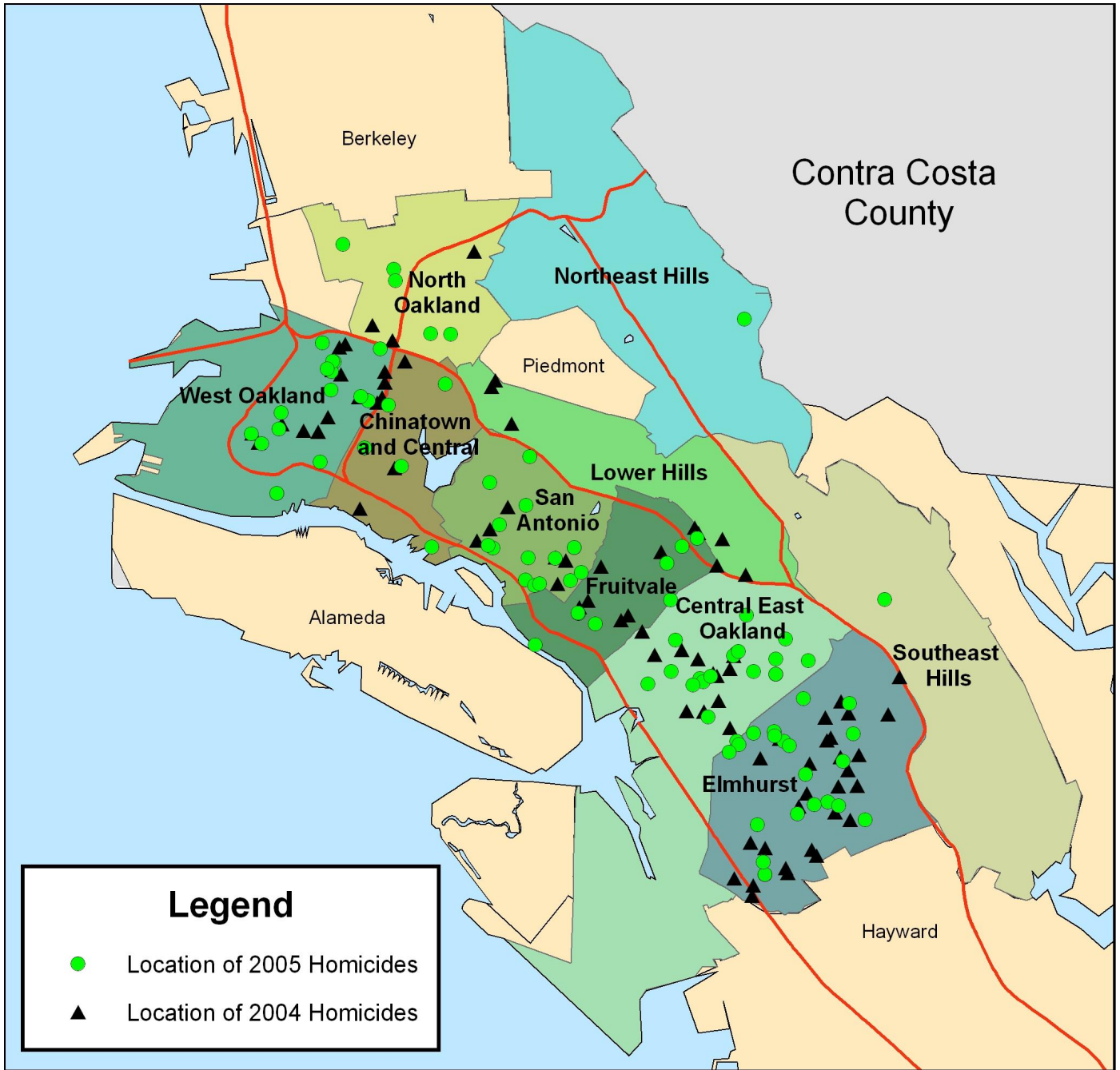


Figure 8b. Map of Oakland Homicides by Neighborhood, 2004-2005



Source: Oakland Police Department, 2006
Map Produced by the Urban Strategies Council, 2006

IX. City Council Districts Where Incidents Occurred

- In 2003, 41% of homicides occurred in District 6 (20.2%) and District 7 (21.1%). This total increased to 47% in 2004, but again dropped back to 41% in 2005.
- The largest increase from 2004 to 2005 was in District 6 from 13% to 21%, though 21% is consistent with historic norms.
- Between 2004 and 2005 every district experienced an increase in the number of yearly homicides, with the exceptions of District 3 and District 7.

Table 9a. Oakland Homicides by City Council District, 2003-2005

City Council District	2003		2004		2005		Annual Percent Change	Annual Change in Count
	Count	Percent of Total	Count	Percent of Total	Count	Percent of Total	2003-2004	2004-2005
1	15	13.2	1	1.1	5	5.3	-93%	368%
2	14	12.3	6	6.8	7	7.4	-57%	9%
3	17	14.9	22	25.0	21	22.3	29%	-11%
4	9	7.9	4	4.5	6	6.4	-56%	40%
5	12	10.5	13	14.8	15	16.0	8%	8%
6	23	20.2	12	13.6	20	21.3	-48%	56%
7	24	21.1	30	34.1	20	21.3	25%	-38%
Total	114	100.0	88	100.0	94	100.0	-23%	7%

Figure 9a. Oakland Homicides by City Council District, 2003-2005

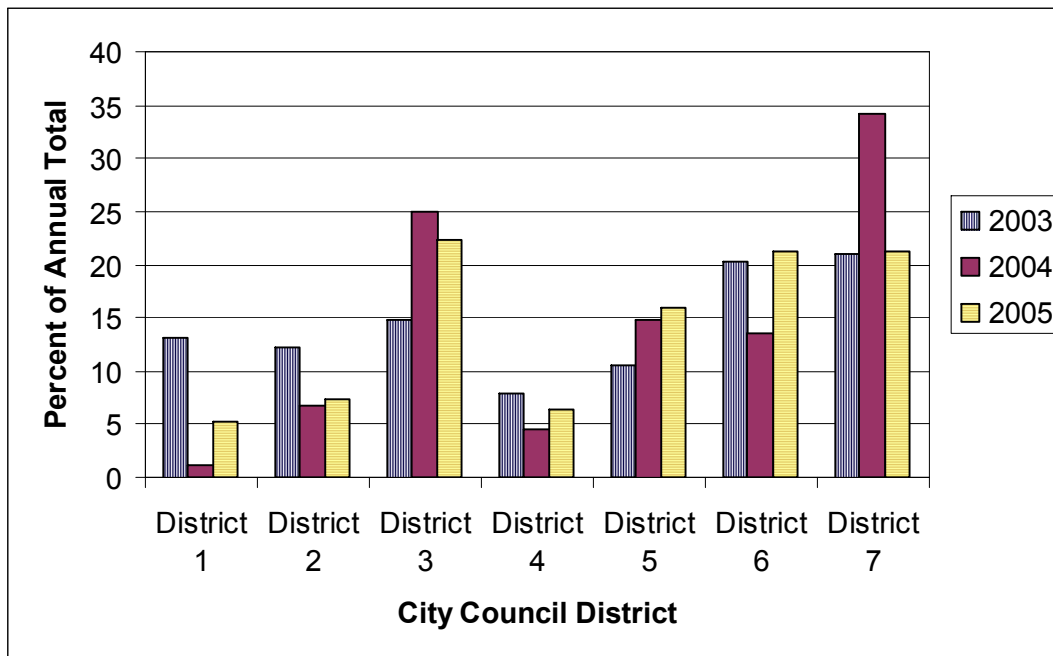
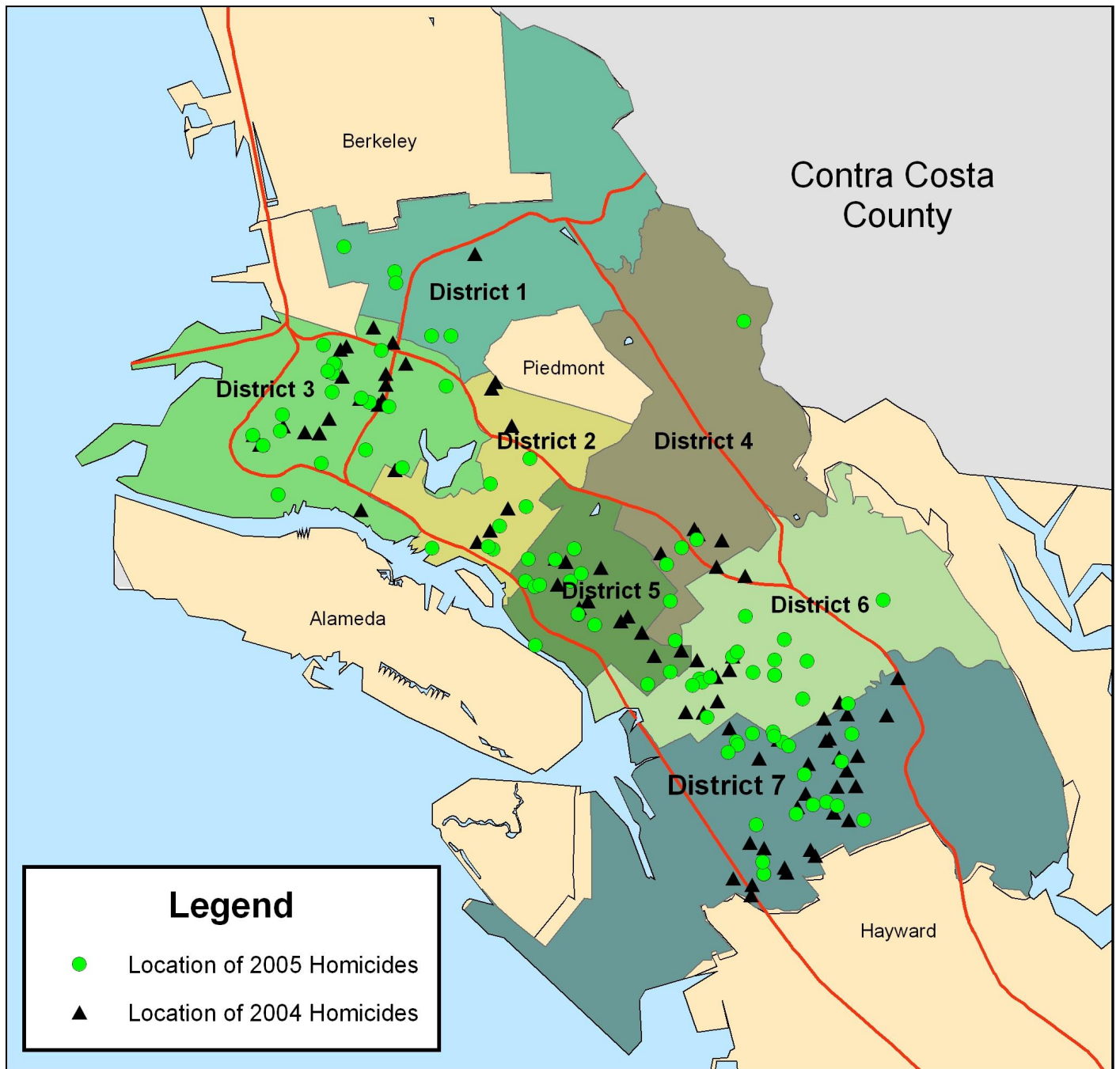


Figure 9b. Map of Oakland Homicides by City Council District, 2004-2005



Source: Oakland Police Department, 2006
Map Produced by the Urban Strategies Council, 2006

X. Police Service Areas Where Incidents Occurred

- In 2005, more than one in four homicides (29.8%) occurred in Police Service Area (PSA) 5. A substantial proportion of homicides also occurred in PSA 1 (18.1%), PSA 4 (16.0%) and PSA 6 (17%).
- From 2004 to 2005, homicides increased most drastically in PSA 2 (228%), though the total count remains small (2 to 7). More significantly, homicides in PSA 5 increased by 64% (from a count of 16 to 28).

Table 10a. Oakland Homicides by Police Service Area (PSA), 2003-2005

Police Service Area	2003		2004		2005		Annual Percent Change	Annual Percent Change	Annual Percent Change
	Count	Percent of Total	Count	Percent of Total	Count	Percent of Total	2003-2004	2004-2005	2003-2005
metro	4	3.5	2	2.3	2	2.1	-50%	0%	-50%
1	17	14.9	19	21.6	17	18.1	12%	-11%	0%
2	12	10.5	2	2.3	7	7.4	-83%	250%	-42%
3	14	12.3	7	8.0	9	9.6	-50%	29%	-36%
4	15	13.2	16	18.2	15	16.0	7%	-6%	0%
5	30	26.3	16	18.2	28	29.8	-47%	75%	-7%
6	22	19.3	26	29.5	16	17.0	18%	-38%	-27%
Total	114	100.0	88	100.0	94	100.0	-23%	7%	-18%

Figure 10a. Oakland Homicides by Police Service Area (PSA), 2004-2005

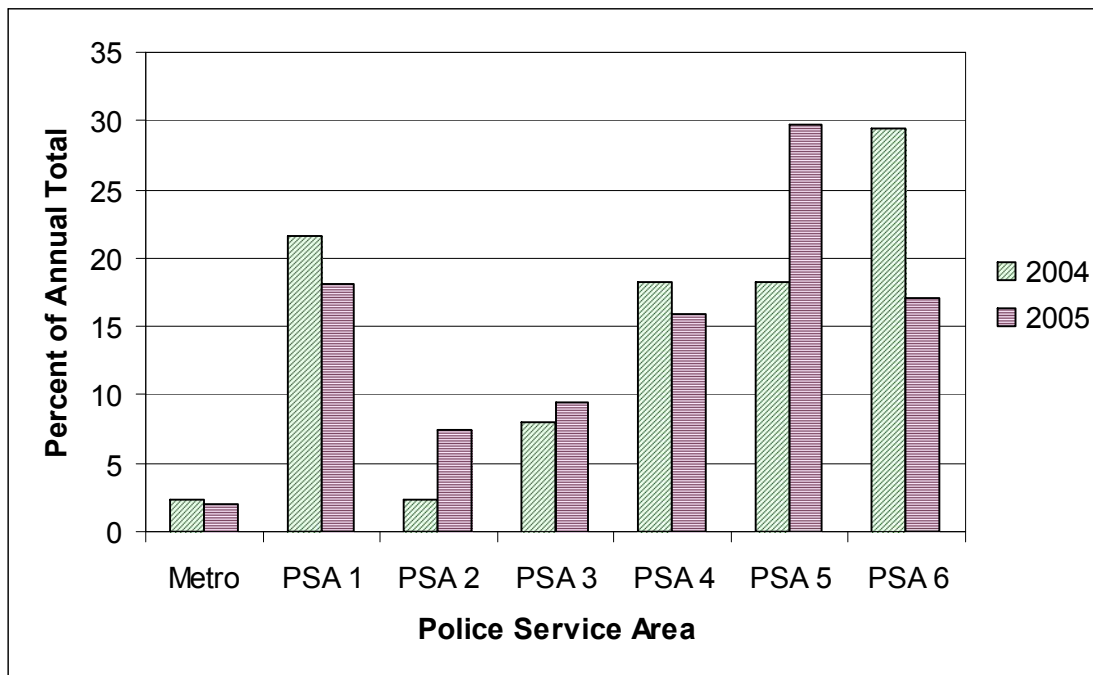
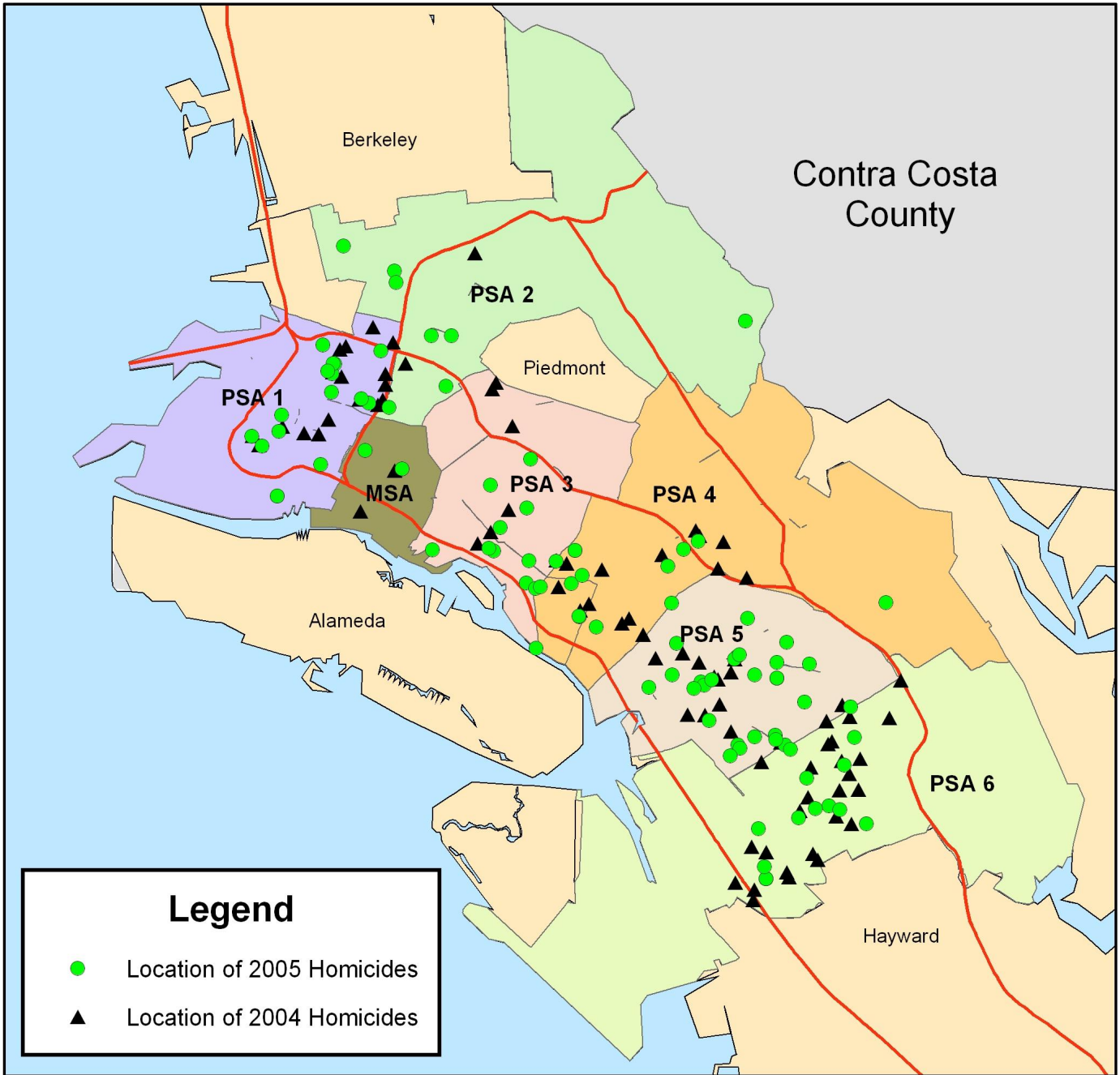


Figure 10b. Map of Oakland Homicides by Police Service Area (PSA), 2004-2005



Source: Oakland Police Department, 2006
Map Produced by the Urban Strategies Council, 2006

XI. Methods of Death

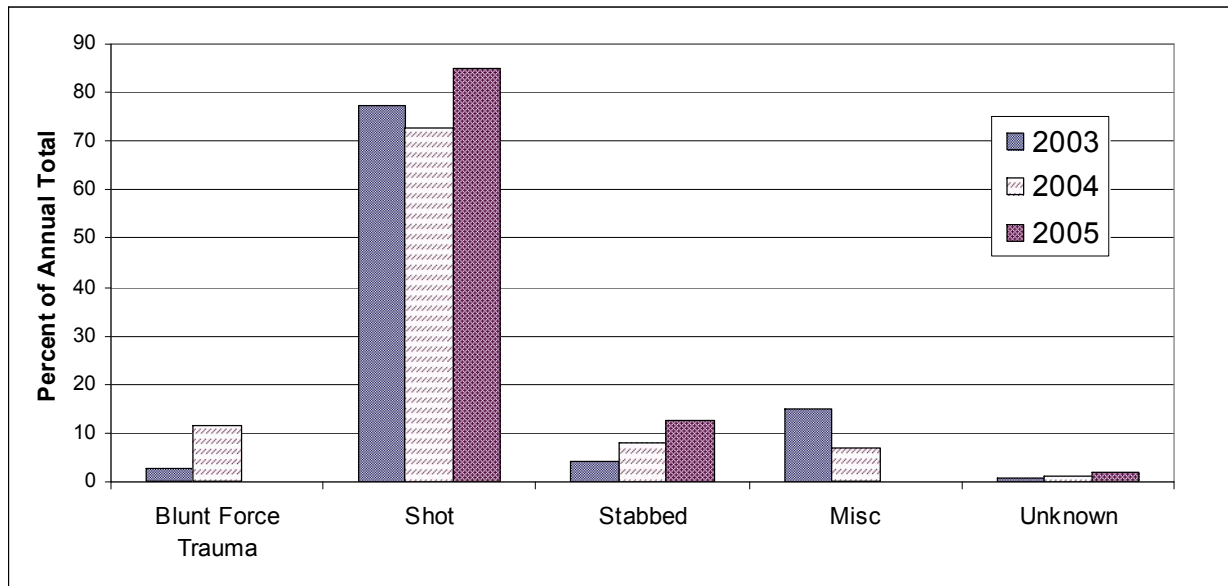
- The most common homicide weapon in 2003, 2004 and 2005 was some type of firearm, ranging from 77% in 2003 to 85% in 2005.
- Handguns also consistently and overwhelmingly account for the greatest number of homicides in all three years.
- Blunt Force Trauma homicides decreased most between 2004 and 2005, though total numbers remained small and may represent reporting inconsistencies (10 to 0).

Table 11a. Oakland Homicides by Method of Death, 2003-2005

Method of Death	2003		2004		2005		Annual Percent Change 2003-2004	Annual Percent Change 2004-2005	Total Percent Change 2003-2005
	Count	Annual Percent of Total	Count	Annual Percent of Total	Count	Annual Percent of Total			
Blunt Force Trauma	3	2.6	10	11.4	0	0	233.3	-100.0	-100
Shot	88	77.2	64	72.7	80	85.1	-27.3	25.0	-9.1
Handgun	75	65.8	44	50	48	51.1	-41.3	9.1	-36
Assault Rifle	9	7.9	12	13.6	9	9.6	33.3	-25.0	0
Shotgun	1	0.9	3	3.4	4	4.3	200	33.3	300
Unknown Firearm	2	1.8	5	5.7	19	20.2	150	280.0	850
Stabbed	5	4.4	7	8.0	12	12.7	0	71.4	140
Misc*	17	14.9	6	6.8	0	0.0	-64.7	-100	-100
Unknown	1	0.9	1	1.1	2	2.1	0	100	100
Total	114	100	88	100	94	100	-22.8	6.8	-17.5

* Misc.: Beaten, Burned, Strangled, Vehicle, etc.

Figure 11a. Oakland Homicides by Method of Death, 2003-2005



XII. Twenty-Year Oakland Homicide Trends

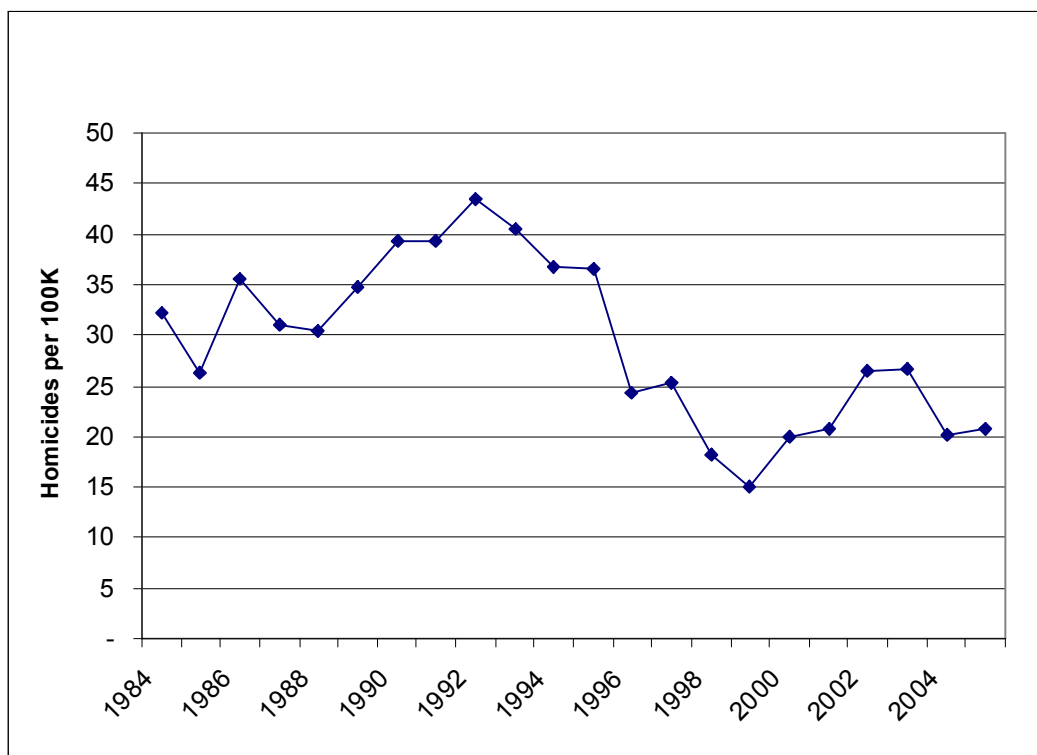
- The level of homicides in Oakland in 2004 and 2005 remained at a low level. In both years, about 21 homicides were committed per 100,000 Oakland residents, which is significantly lower than the 20-year average of 29.27.
- In 1992, Oakland homicides reached a peak of 43.5 homicides per 100,000 residents.

Table 12a. Twenty Year Oakland Homicide Trends*

Year	Oakland Pop in thousands	Homicides	Homicides per 100K
1985	361	95	26.32
1986	363	129	35.54
1987	367	114	31.06
1988	368	112	30.43
1989	370	129	34.86
1990	372	146	39.25
1991	378	149	39.42
1992	379	165	43.54
1993	380	154	40.53
1994	381	140	36.75
1995	381	139.1*	36.51
1996	384	93	24.22
1997	390	99	25.38
1998	398	72	18.09
1999	401	60	14.96
2000	400	80	20.00
2001	403	84	20.84
2002	407	108	26.54
2003	409	109	26.65
2004	412	83	20.15
2005	410	85.5*	20.84
20 Year Mean		111.8	29.27

* Data from FBI's Uniform Crime Report (UCR), except 1995 and 2005. These years were estimated using Oakland Police Department data and an average underreporting of UCR data of 9%.

Figure 12a. Twenty-Year Oakland Homicide Trends 1985-2005



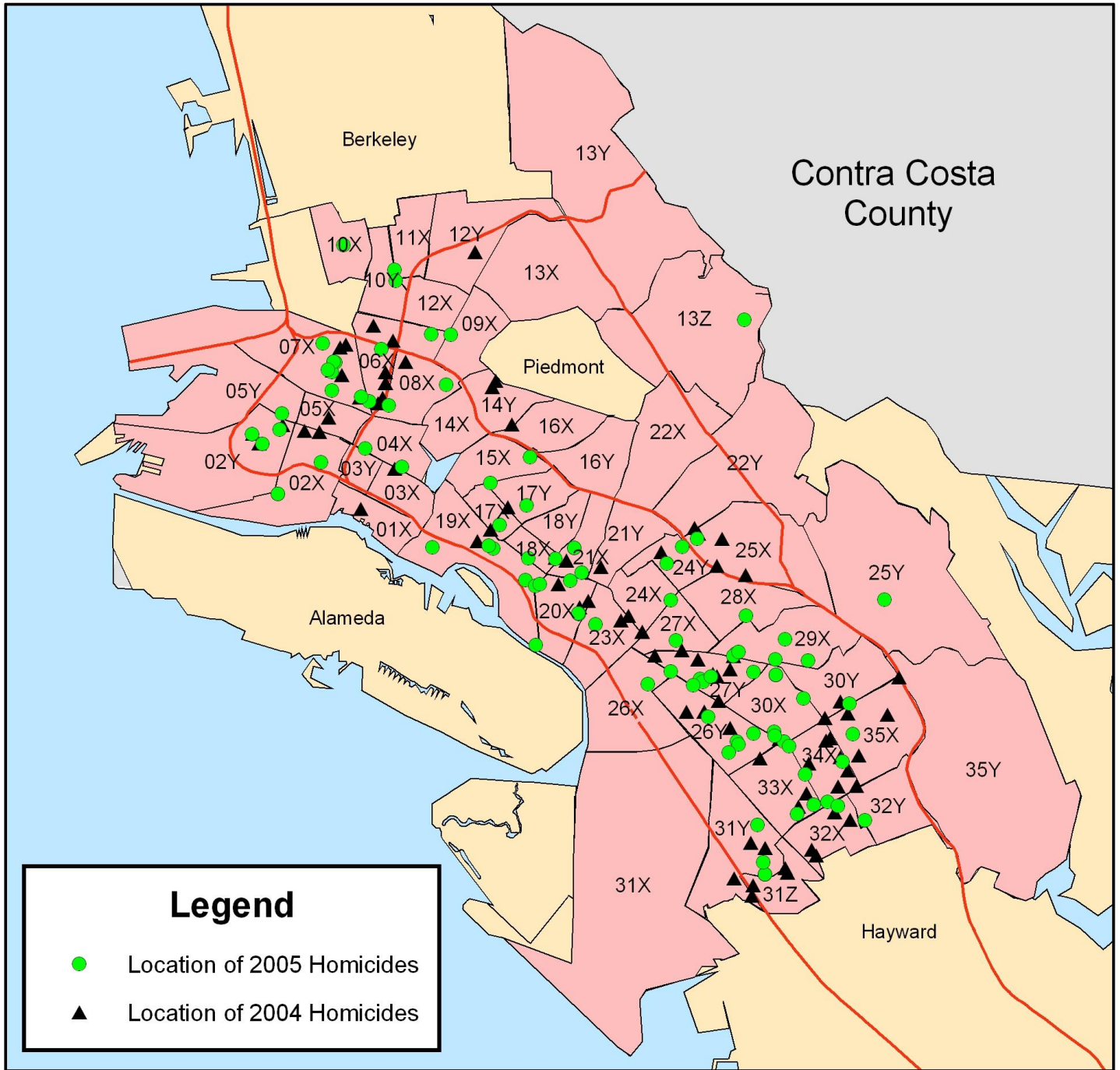
Appendix A. Additional Analyses

Table A1. Oakland Homicides by Police Beat, 2004-2005

Police Beat	2003		2004		2005		Annual Percent Change	Annual Change in Count
	Count	Percent of Total	Count	Percent of Total	Count	Percent of Total	2003-2004	2004-2005
01X	0	0.0	1	1.1	0	0.0	N/A	-100%
02X	2	1.8	2	2.3	3	3.2	0%	50%
02Y	3	2.6	3	3.4	3	3.2	0%	0%
03X	2	1.8	1	1.1	0	0.0	-50%	-100%
03Y	0	0.0	0	0.0	0	0.0	N/A	0%
04X	2	1.8	0	0.0	2	2.1	-100%	200%
05X	1	0.9	1	1.1	0	0.0	0%	-100%
05Y	0	0.0	0	0.0	1	1.1	N/A	100%
06X	6	5.3	8	9.1	2	2.1	33%	-75%
07X	5	4.4	5	5.7	8	8.5	0%	60%
08X	2	1.8	1	1.1	3	3.2	-50%	200%
09X	0	0.0	0	0.0	1	1.1	N/A	100%
10X	3	2.6	0	0.0	1	1.1	-100%	0%
10Y	3	2.6	0	0.0	1	1.1	-100%	100%
11X	2	1.8	0	0.0	1	1.1	-100%	100%
12X	0	0.0	0	0.0	0	0.0	N/A	0%
12Y	2	1.8	1	1.1	0	0.0	-50%	-100%
13X	0	0.0	0	0.0	0	0.0	N/A	0%
13Y	0	0.0	0	0.0	0	0.0	N/A	0%
13Z	0	0.0	0	0.0	1	1.1	N/A	100%
14X	1	0.9	0	0.0	0	0.0	-100%	0%
14Y	1	0.9	3	3.4	0	0.0	200%	-100%
15X	0	0.0	0	0.0	1	1.1	N/A	100%
16X	1	0.9	0	0.0	0	0.0	-100%	0%
16Y	1	0.9	0	0.0	0	0.0	-100%	0%
17X	2	1.8	1	1.1	1	1.1	-50%	0%
17Y	3	2.6	1	1.1	2	2.1	-67%	100%
18X	0	0.0	1	1.1	2	2.1	N/A	100%
18Y	1	0.9	0	0.0	0	0.0	-100%	0%
19X	4	3.5	1	1.1	6	6.4	-75%	500%
20X	4	3.5	3	3.4	4	4.3	-25%	33%
21X	2	1.8	2	2.3	3	3.2	0%	50%
21Y	2	1.8	1	1.1	0	0.0	-50%	-100%
22X	2	1.8	0	0.0	0	0.0	-100%	0%
22Y	2	1.8	1	1.1	0	0.0	-50%	-100%
23X	2	1.8	1	1.1	1	1.1	-50%	0%
24X	0	0.0	3	3.4	0	0.0	N/A	-100%
24Y	1	0.9	1	1.1	2	2.1	0%	100%
25X	0	0.0	4	4.5	1	1.1	N/A	-75%
25Y	0	0.0	0	0.0	1	1.1	N/A	100%
26X	0	0.0	0	0.0	1	1.1	N/A	100%
26Y	5	4.4	4	4.5	5	5.3	-20%	25%
27X	5	4.4	1	1.1	2	2.1	-80%	100%
27Y	4	3.5	6	6.8	6	6.4	50%	0%

28X	2	1.8	0	0.0	1	1.1	-100%	100%
29X	5	4.4	1	1.1	6	6.4	-80%	500%
30X	9	7.9	1	1.1	7	7.4	-89%	600%
30Y	0	0.0	3	3.4	1	1.1	N/A	-67%
31X	1	0.9	0	0.0	0	0.0	-100%	0%
31Y	2	1.8	4	4.5	5	5.3	100%	25%
31Z	2	1.8	4	4.5	0	0.0	100%	-100%
32X	1	0.9	4	4.5	1	1.1	300%	-75%
32Y	2	1.8	0	0.0	1	1.1	-100%	100%
33X	4	3.5	3	3.4	2	2.1	-25%	-33%
34X	6	5.3	7	8.0	4	4.3	17%	-43%
35X	4	3.5	4	4.5	1	1.1	0%	-75%
35Y	0	0.0	0	0.0	0	0.0	N/A	0%
Total	114	100.0	88	100.0	94	100.0	-23%	7%

Figure A1. Map of Oakland Homicides by Police Beat, 2004-2005



Source: Oakland Police Department, 2006
Map Produced by the Urban Strategies Council, 2006

Sources

Homicide data for 1995 to 2005 was received from the Oakland Police Department Homicide Division.

Homicide data for the twenty-year trend charts were taken from the FBI's Uniform Crime Report.

Oakland population figures were taken from the California Department of Finance's Annual City and County Population and Housing Estimates.