

# **Homicides in Oakland<sup>©</sup>**

## **An Analysis of Homicides in Oakland 2002, 2003 and 2004**

February 10, 2005

### **Prepared by:**

Sandra Padilla  
Robert Hope  
Junious Williams

**Urban Strategies Council**  
[www.Urbanstrategies.org](http://www.Urbanstrategies.org)

**and**

Jeremy Hays  
Information Networking Forum of Oakland (InfoOakland)

[www.InfoOakland.org](http://www.InfoOakland.org)

672 13<sup>th</sup> St.  
Oakland, CA 94612

© 2005 Urban Strategies Council

For additional copies or permission to reprint, please contact the

Urban Strategies Council ♦ 672 13<sup>th</sup> Street ♦ Oakland, CA 94612

*Phone:* (510) 893-2404 ♦ *Fax:* (510) 893-6657 ♦ *E-mail:* [admin@urbanstrategies.org](mailto:admin@urbanstrategies.org)

*Web site:* [www.urbanstrategies.org](http://www.urbanstrategies.org)

## TABLE OF CONTENTS

INTRODUCTION .....	1
MOST COMMON CHARACTERISTICS OF 2004 OAKLAND HOMICIDES .....	1
Table A. Most Common Characteristics of Oakland Homicides, 2004 .....	1
I. Three-Year Oakland Homicide Trends .....	2
Table 1a. Total Homicides in Oakland, 2002-2004.....	2
Figure 1a. Total Homicides in Oakland, 2002-2004.....	2
II. Gender of Victims and Suspects .....	3
Table 2a. Oakland Homicides by Victim’s Gender, 2002-2004.....	3
Figure 2a. Oakland Homicides by Victim’s Gender, 2002-2004 .....	3
Table 2b. Oakland Homicides by Suspect’s Gender, 2004 .....	4
Figure 2b. Oakland Homicides by Suspect’s Gender, 2004 .....	4
III. Race of Victims and Suspects.....	5
Table 3a. Oakland Homicides by Victim’s Race, 2002-2004 .....	5
Figure 3a. Oakland Homicides by Victim’s Race, 2002-2004 .....	5
Table 3b. Oakland Homicides by Suspect’s Race, 2004 .....	6
Figure 3b. Oakland Homicides by Suspect’s Race, 2004.....	6
IV. Age of Victims and Suspects.....	7
Table 4a. Oakland Homicides by Victim’s Age, 2002-2004.....	7
Figure 4a. Oakland Homicides by Victim’s Age, 2002-2004 .....	7
Table 4b. Oakland Homicides by Suspect’s Age, 2004.....	8
Figure 4b. Oakland Homicides by Suspect’s Age, 2004 .....	8
V. Parole and Probation Status of Victims and Suspects*.....	9
Table 5a. Oakland Homicides by Parole/Probation Status of Victim and Suspect, 2004 .....	9
Figure 5a. Oakland Homicides by Parole/Probation Status of Victim, 2004 .....	9
Figure 5b. Oakland Homicides by Parole/Probation Status of Suspect, 2004.....	9
VI. Month of Incident .....	10
Table 6a. Oakland Homicides by Month of Incident, 2002-2004 .....	10
Figure 6a. Oakland Homicides by Month of Incident, 2002-2004 .....	10
VII. Time of Day When Incidents Occurred .....	11
Table 7a. Oakland Homicides by Time of Day, 2004 .....	11
Figure 7a. Oakland Homicides by Time of Day, 2004 .....	11
VIII. Neighborhood Where Incidents Occurred .....	12
Table 8a. Oakland Homicides by Neighborhood, 2003-2004 .....	12
Figure 8a. Oakland Homicides by Neighborhood, 2003-2004.....	12
IX. City Council Districts Where Incidents Occurred .....	14
Table 9a. Oakland Homicides by City Council District, 2002-2004.....	14
Figure 9a. Oakland Homicides by City Council District, 2002-2004.....	14
Figure 9b. Map of Oakland Homicides by City Council District, 2003-2004.....	15
X. Police Service Areas Where Incidents Occurred .....	16
Table 10a. Oakland Homicides by Police Service Area (PSA), 2003-2004.....	16
Figure 10a. Oakland Homicides by Police Service Area (PSA), 2003-2004 .....	16
XI. Methods of Death .....	18
Table 11a. Oakland Homicides by Method of Death, 2002-2004 .....	18
Figure 11a. Oakland Homicides by Method of Death, 2002-2004.....	18
XII. Twenty-Year Oakland Homicide Trends .....	19

Table 12a. Twenty-Year Oakland Homicide Trends* .....	19
Figure 12a. Twenty-Year Oakland Homicide Trends*.....	19
Table A1. Total Homicides in Oakland and Rate per 100,000 Population, 2002-2004 .....	20
Figure A1. Total Homicides in Oakland and Rate per 100,000 Population, 2002-2004.....	20
Table A2. Oakland Homicides by Police Beat, 2003-2004 .....	21
Figure A2. Map of Oakland Homicides by Police Beat, 2003-2004 .....	22
Sources .....	23

# Homicides in Oakland

## February 10, 2005

### INTRODUCTION

The number of homicides committed in Oakland decreased substantially between 2003 and 2004. The decline has been attributed, in part, to the Oakland Police Department's Violence Reduction Plan launched in October 2003, greater collaboration between local and state law enforcement agencies, and increased community involvement in violence prevention activities.

This report summarizes changes in specific characteristics of homicides over the past three years, such as victim and suspect demographic characteristics, locations of the crimes, the parole/probation status of victims and suspects, and the time of day and month that the homicides were committed. In addition to presenting annual data for 2002, 2003, and 2004, the tables and figures in this report show how characteristics of the homicides changed from year to year and over the three-year period.

### MOST COMMON CHARACTERISTICS OF 2004 OAKLAND HOMICIDES

The table below summarizes the most common characteristics of Oakland homicides in 2004. The reader should note that these characteristics do not describe all—and in some cases not even the majority—of Oakland homicides.

**Table A. Most Common Characteristics of Oakland Homicides, 2004**

	Most Common Characteristic	Percent of Total
<b>Victim</b>		
Gender	Male	85%
Race	Black	77%
Age (Years)	25 to 34	32%
Probation/Parole Status	On Neither	64%
<b>Suspect</b>		
Gender	Male	84%
Race	Black	84%
Age (Years)	18 to 25	26%
Probation/Parole Status	On Neither	73%
<b>Time, Location and Method</b>		
Month	May/December	16%
Time of Day	10pm - 6am	55%
City Council District	District 7	34%
Neighborhood	Elmhurst	34%
Police Beat	06X	9%
Method	Gunshot	73%

## I. Three-Year Oakland Homicide Trends

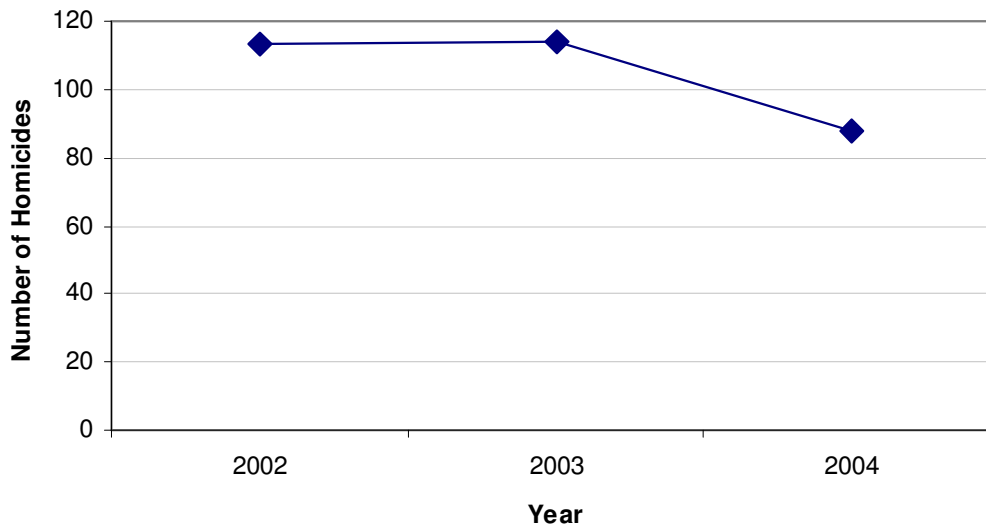
- Oakland homicides for the three year period peaked at 114 in 2003, and declined by 23% to 88 in 2004.<sup>1</sup>

**Table 1a. Total Homicides in Oakland, 2002-2004**

	2002	2003	2004	Annual Percent Change		Total Percent Change
	Count	Count	Count	2002-2003	2003-2004	2002-2004
Total Homicides	113	114	88	0.9	-22.8	-22.1

\*See Table A1 in Appendix A for analysis of murder rates per 100,00 population.

**Figure 1a. Total Homicides in Oakland, 2002-2004**



<sup>1</sup> "Total Percent Change" in each table represents the change in the *raw number* of homicides from 2002 to 2004. In some instances, a category being measured may decrease in raw number of incidents, but make up an increased proportion of the overall number of homicides in each year.

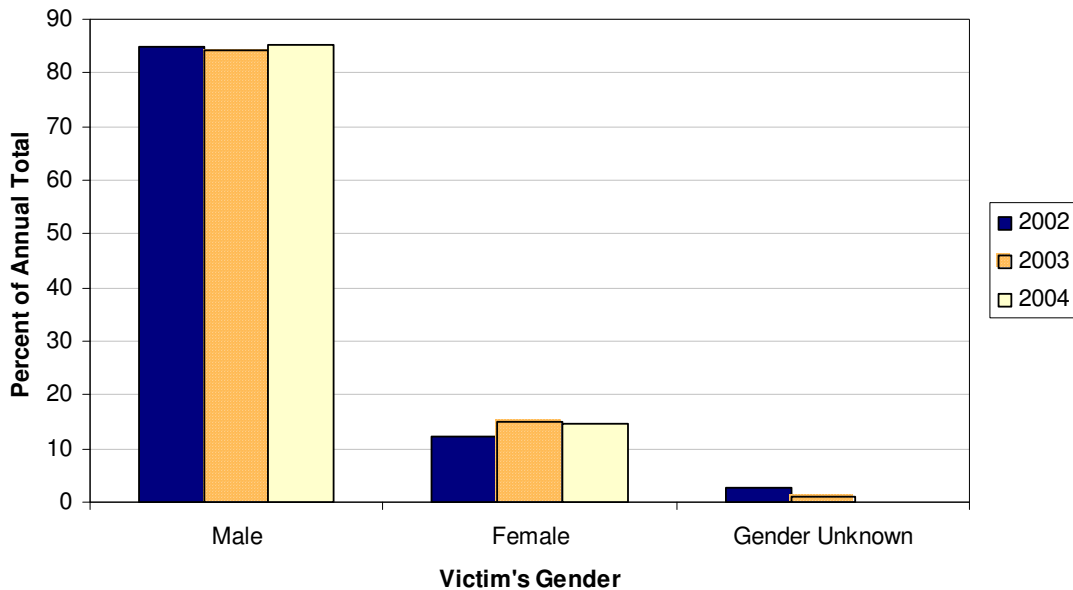
## II. Gender of Victims and Suspects

- More than eight out of ten homicide victims were males in each of the three years.
- In 2004, 84% of suspects were identified as male.

**Table 2a. Oakland Homicides by Victim's Gender, 2002-2004**

Victim's Gender	2002		2003		2004		Annual Percent Change		Total Percent Change
	Count	Percent of Total	Count	Percent of Total	Count	Percent of Total	2002-2003	2003-2004	2002-2004
Male	96	85.0	96	84.2	75	85.2	0.0	-21.9	-21.9
Female	14	12.4	17	14.9	13	14.8	21.4	-23.5	-7.1
Gender Unknown	3	2.7	1	0.9	0	0.0	-66.7	-100.0	-100.0
Total	113	100.0	114	100.0	88	100.0	0.9	-22.8	-22.1

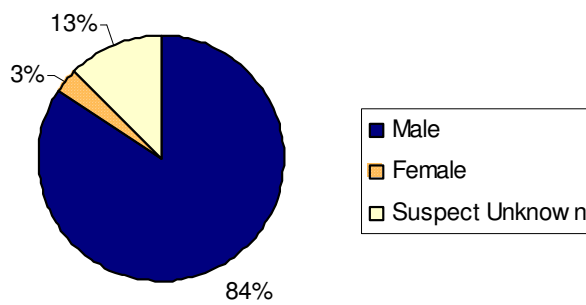
**Figure 2a. Oakland Homicides by Victim's Gender, 2002-2004**



**Table 2b. Oakland Homicides by Suspect's Gender, 2004**

Suspect's Gender	2004	
	Count	Percent of Total
Male	74	84.1
Female	3	3.4
Suspect Unknown	11	12.5
Total	88	100.0

**Figure 2b. Oakland Homicides by Suspect's Gender, 2004**





### III. Race of Victims and Suspects

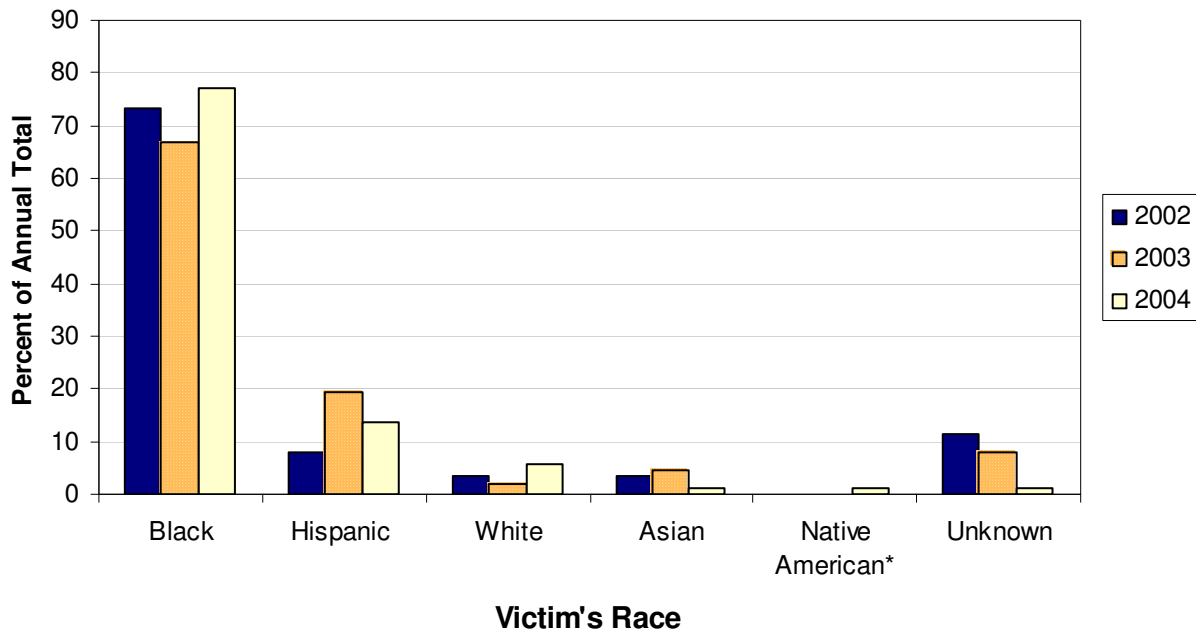
- In all three years, the majority of homicide victims were Black. The proportion of victims that were Black decreased from 74% in 2002 to 67% in 2003 and then increased to a peak of 77% in 2004.
- The proportion of victims that were Hispanic increased from 8% in 2002 to 19% in 2003 and then declined to 14% in 2004.
- In 2004, 84% of suspects were identified as Black, and 9% were identified as Hispanic.

**Table 3a. Oakland Homicides by Victim's Race, 2002-2004**

Victim's Race	2002		2003		2004		Annual Percent Change		Total Percent Change
	Count	Percent of Total	Count	Percent of Total	Count	Percent of Total	2002-2003	2003-2004	2002-2004
Black	83	73.5	76	66.7	68	77.3	8.4	-10.5	-18.1
Hispanic	9	8.0	22	19.3	12	13.6	-144.4	-45.5	33.3
White	4	3.5	2	1.8	5	5.7	50.0	150.0	25.0
Asian	4	3.5	5	4.4	1	1.1	-25.0	-80.0	-75.0
Native American*	N/A	N/A	N/A	N/A	1	1.1	N/A	N/A	N/A
Unknown	13	11.5	9	7.9	1	1.1	30.8	-88.9	-92.3
Total	113	100.0	114	100.0	88	98.9	-0.9	-22.8	-22.1

\*Native American data not available for 2002-2003.

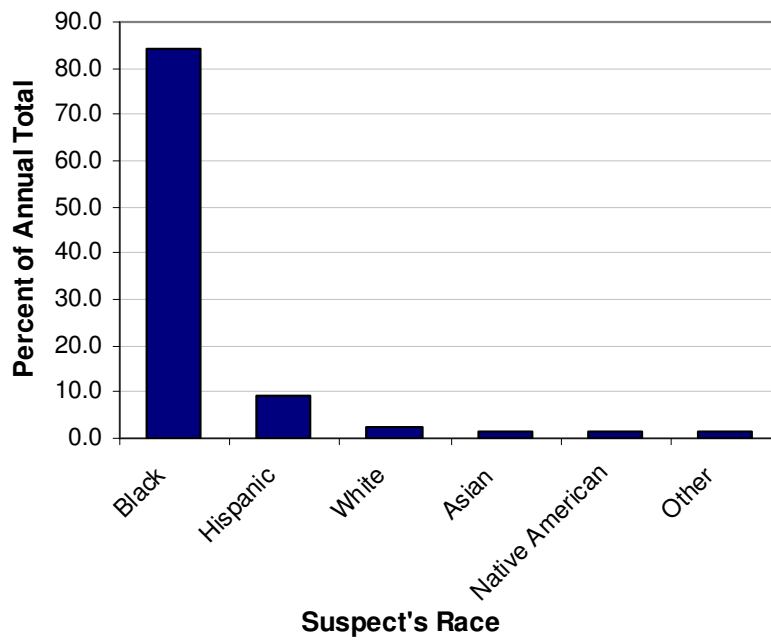
**Figure 3a. Oakland Homicides by Victim's Race, 2002-2004**



**Table 3b. Oakland Homicides by Suspect's Race, 2004**

Suspect's Race	2004	
	Count	Percent of Total
Black	65	84.4
Hispanic	7	9.1
White	2	2.6
Asian	1	1.3
Native American	1	1.3
Other	1	1.3
Total	77	100.0

**Figure 3b. Oakland Homicides by Suspect's Race, 2004**



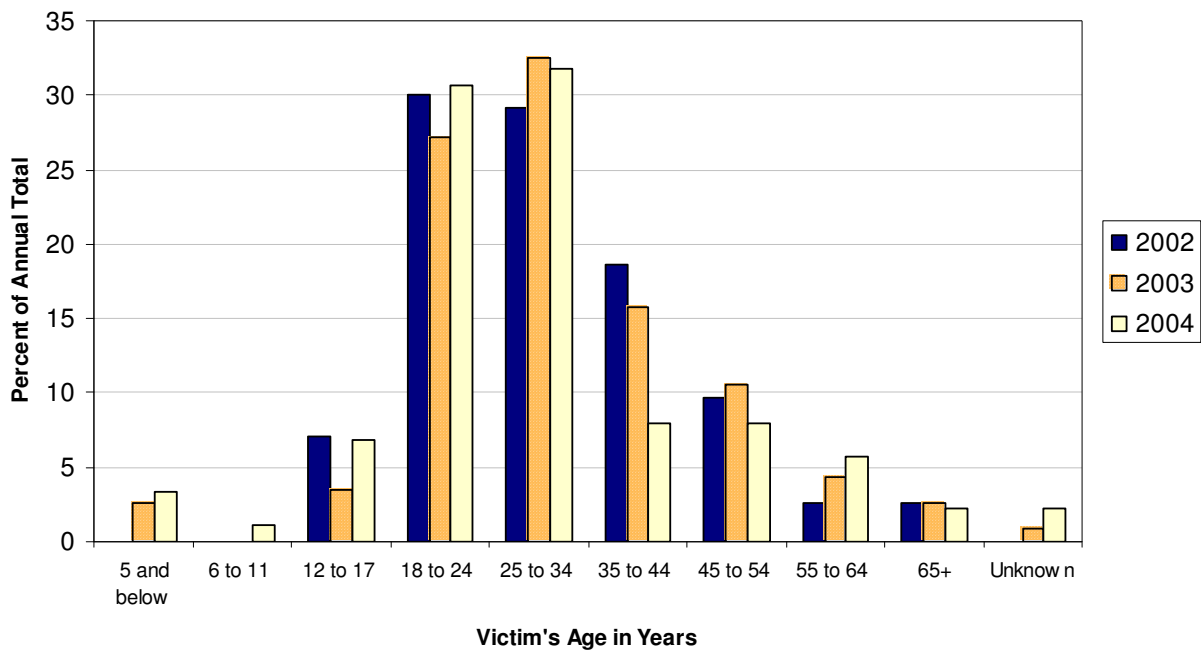
#### IV. Age of Victims and Suspects

- In all three years, approximately 60% of homicide victims were between the ages of 18 and 34.
- The proportion of victims between ages 35 and 54 declined over the three-year period from a high of 28% in 2002 to a low of 16% in 2004.
- Victims under 17 and over 54 years of age were increasingly common. Victims under 17 increased from 7% of total homicides in 2002 and 2003 to more than 11% in 2004. Victims over 54 increased from 5% in 2002 to a high of 8% in 2004.
- In 2004, nearly half (49%) of the suspects were identified as being between the ages of 18 and 35.

**Table 4a. Oakland Homicides by Victim's Age, 2002-2004**

Victim's Age	2002		2003		2004		Annual Percent Change		Total Percent Change
	Count	Percent of Total	Count	Percent of Total	Count	Percent of Total	2002-2003	2003-2004	2002-2004
5 Years & Under	0	0.0	3	2.6	3	3.4	N/A	0.0	N/A
6 to 11 Years	0	0.0	0	0.0	1	1.1	N/A	N/A	N/A
12 to 17 Years	8	7.1	4	3.5	6	6.8	-50.0	50.0	-25.0
18 to 24 Years	34	30.1	31	27.2	27	30.7	-8.8	-12.9	-20.6
25 to 34 Years	33	29.2	37	32.5	28	31.8	12.1	-24.3	-15.2
35 to 44 Years	21	18.6	18	15.8	7	8.0	-14.3	-61.1	-66.7
45 to 54 Years	11	9.7	12	10.5	7	8.0	9.1	-41.7	-36.4
55 to 64 Years	3	2.7	5	4.4	5	5.7	66.7	0.0	66.7
65 Years & Over	3	2.7	3	2.6	2	2.3	0.0	-33.3	-33.3
Unknown	0	0.0	1	0.9	2	2.3	N/A	100.0	N/A
Total	113	100.0	114	100.0	88	100.0	0.9	-22.8	-22.1

**Figure 4a. Oakland Homicides by Victim's Age, 2002-2004**

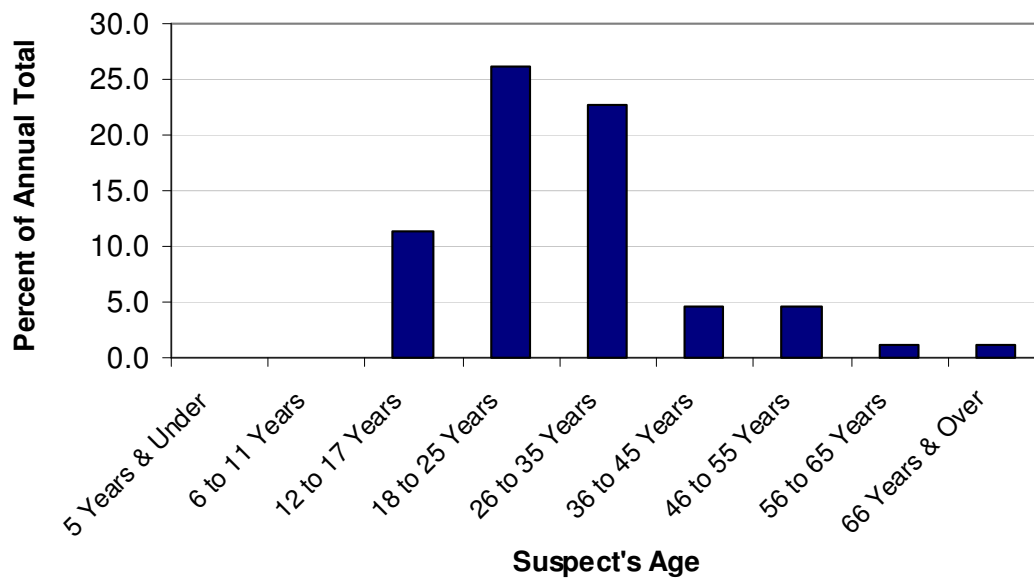


**Table 4b. Oakland Homicides by Suspect's Age, 2004**

Suspect's Age*	2004	
	Count	Percent of Total
5 Years & Under	0	0.0
6 to 11 Years	0	0.0
12 to 17 Years	10	11.4
18 to 25 Years	23	26.1
26 to 35 Years	20	22.7
36 to 45 Years	4	4.5
46 to 55 Years	4	4.5
56 to 65 Years	1	1.1
66 Years & Over	1	1.1
Unknown	25	28.4
Total	88	100.0

\*Note slight variation in age breakdown for suspects from that used in victim table.

**Figure 4b. Oakland Homicides by Suspect's Age, 2004**



## V. Parole and Probation Status of Victims and Suspects\*

- In 2004, approximately 64% of homicide victims were on neither parole nor probation; roughly 36% of homicide victims were on parole and/or probation.
- While 73% of homicide suspect were on neither parole and/or probation, 27% of homicide suspects were on parole and/or probation.

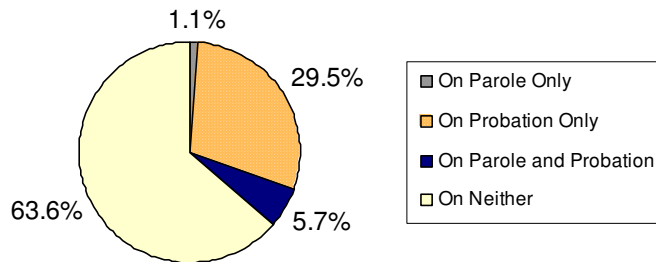
**Table 5a. Oakland Homicides by Parole/Probation Status of Victim and Suspect, 2004**

Parole/Probation Status	Victims		Suspects**	
	Count	Percent of Total	Count	Percent of Total
On Neither Parole nor Probation	56	63.6	46	73.0
On Parole and/or Probation	32	36.4	17	27.0
On Parole Only	1	1.1	5	7.9
On Probation Only	26	29.5	8	12.7
On Parole and Probation	5	5.7	4	6.3
Total	88	100.0	63	100.0

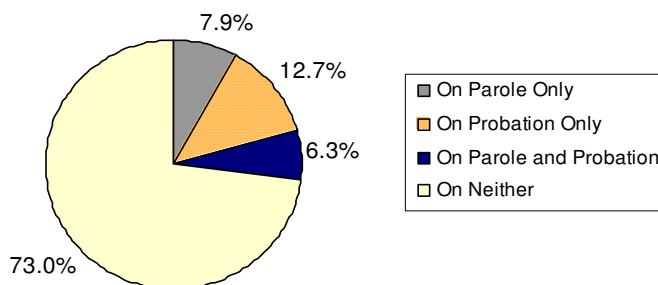
\*Caution: The total percent of victims on parole and/or probation cannot be added to the total percent of suspects on parole and/or probation to determine the total percent of homicides that involved parolees and/or probationers. To simply add those percentages would assume there were no homicides in which both the suspect and victim were on parole and/or probation.

\*\* Only 63 suspects have been identified for whom parole/probation status could be determined.

**Figure 5a. Oakland Homicides by Parole/Probation Status of Victim, 2004**



**Figure 5b. Oakland Homicides by Parole/Probation Status of Suspect, 2004**



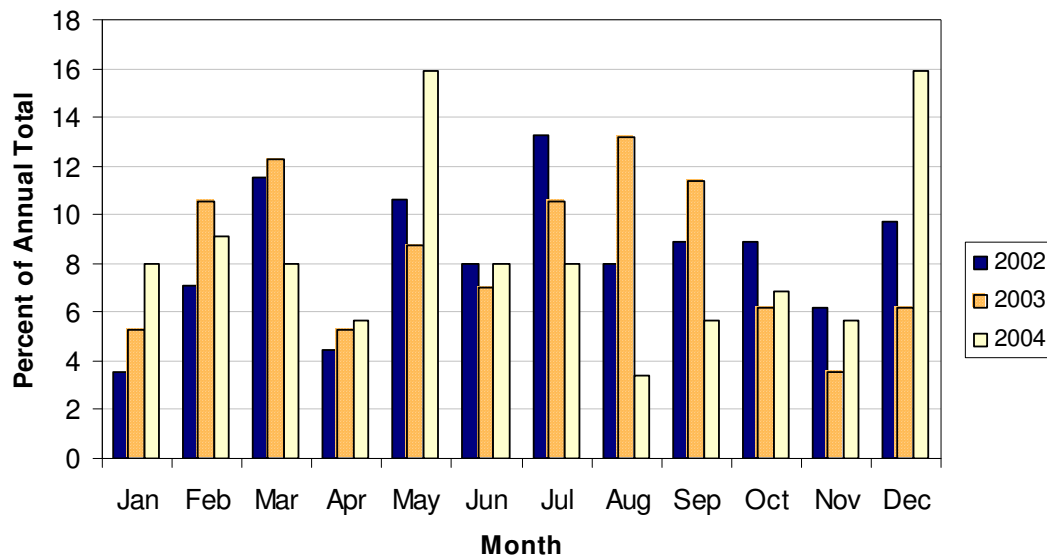
## VI. Month of Incident

- In 2002, nearly half (45%) of the homicides occurred in March, May, July and December.
- In 2003, the occurrence of homicides was more concentrated, with 35% taking place in the late summer months of July, August and September. Another 23% took place in February and March.
- In 2004, 32% of homicides occurred in May and December (16% in each). The remaining homicides were spread relatively evenly across other months of the year.

**Table 6a. Oakland Homicides by Month of Incident, 2002-2004**

Month of Incident	2002		2003		2004		Annual Percent Change		Total Percent Change
	Count	Percent of Total	Count	Percent of Total	Count	Percent of Total	2002-2003	2003-2004	2002-2004
Jan	4	3.5	6	5.3	7	8.0	50.0	16.7	75.0
Feb	8	7.1	12	10.5	8	9.1	50.0	-33.3	0.0
Mar	13	11.5	14	12.3	7	8.0	7.7	-50.0	-46.2
Apr	5	4.4	6	5.3	5	5.7	20.0	-16.7	0.0
May	12	10.6	10	8.8	14	15.9	-16.7	40.0	16.7
Jun	9	8.0	8	7.0	7	8.0	-11.1	-12.5	-22.2
Jul	15	13.3	12	10.5	7	8.0	-20.0	-41.7	-53.3
Aug	9	8.0	15	13.2	3	3.4	66.7	-80.0	-66.7
Sep	10	8.8	13	11.4	5	5.7	30.0	-61.5	-50.0
Oct	10	8.8	7	6.1	6	6.8	-30.0	-14.3	-40.0
Nov	7	6.2	4	3.5	5	5.7	-42.9	25.0	-28.6
Dec	11	9.7	7	6.1	14	15.9	-36.4	100.0	27.3
Total	113	100.0	114	100.0	88	100.0	0.9	-22.8	-22.1

**Figure 6a. Oakland Homicides by Month of Incident, 2002-2004**



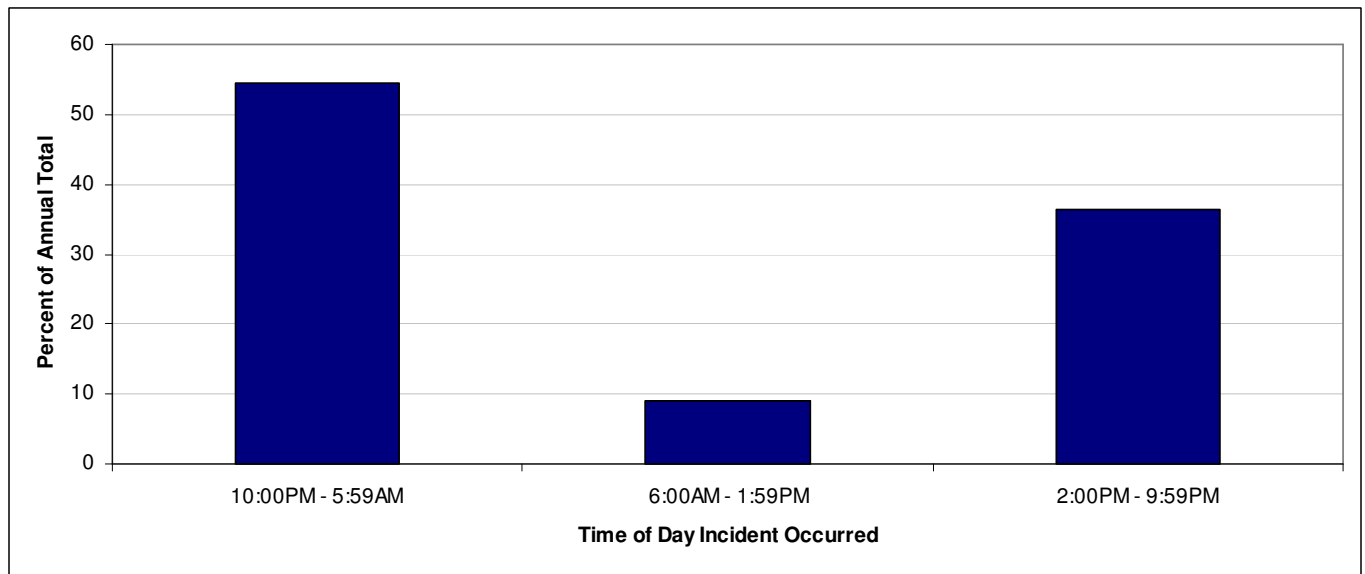
## VII. Time of Day When Incidents Occurred

- 55 percent of homicides in 2004 occurred between the hours of 10pm and 6am.
- An additional 32% occurred between 2pm and 10pm.

**Table 7a. Oakland Homicides by Time of Day, 2004**

Time Block of Homicide	2004	
	Count	Percent of Total
10:00PM - 5:59AM	48	54.5
6:00AM - 1:59PM	8	9.1
2:00PM - 9:59PM	32	36.4
Total	88	100

**Figure 7a. Oakland Homicides by Time of Day, 2004**



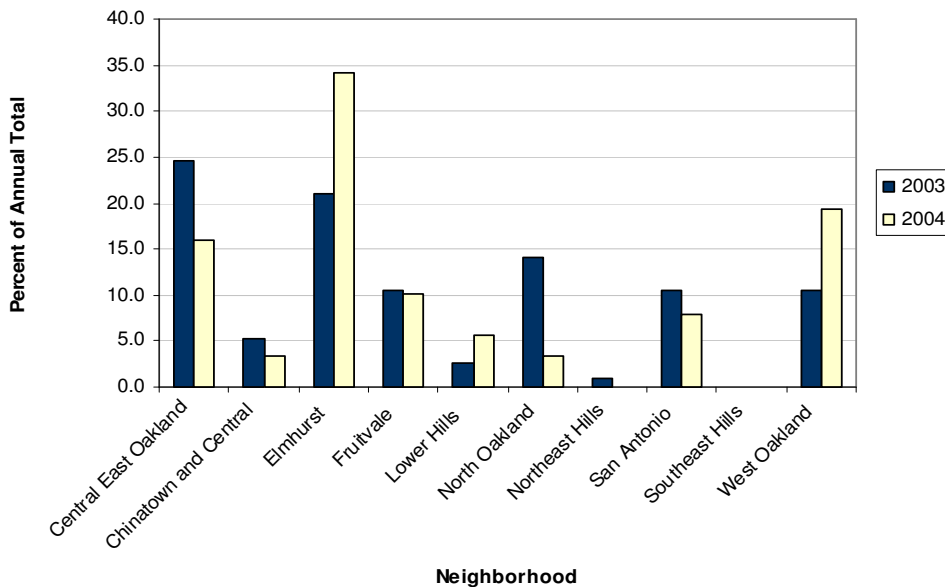
### VIII. Neighborhood Where Incidents Occurred

- In 2003, nearly half of homicides occurred in Central East Oakland (25%) and Elmhurst (21%). Fruitvale, North Oakland, San Antonio, and West Oakland each contributed between 10% and 14% of citywide homicides.
- In 2004, Elmhurst and West Oakland saw the greatest increases in homicides compared to the rest of the city, increasing from 21% to 34% and 11% to 19%, respectively. The proportion of homicides occurring in the Lower Hills also increased slightly, from 3% to 6% percent of the total.
- Homicides decreased in count and proportion in 2004 in all other neighborhoods, except in the Southeast Hills, where no homicides occurred in either year.

**Table 8a. Oakland Homicides by Neighborhood, 2003-2004**

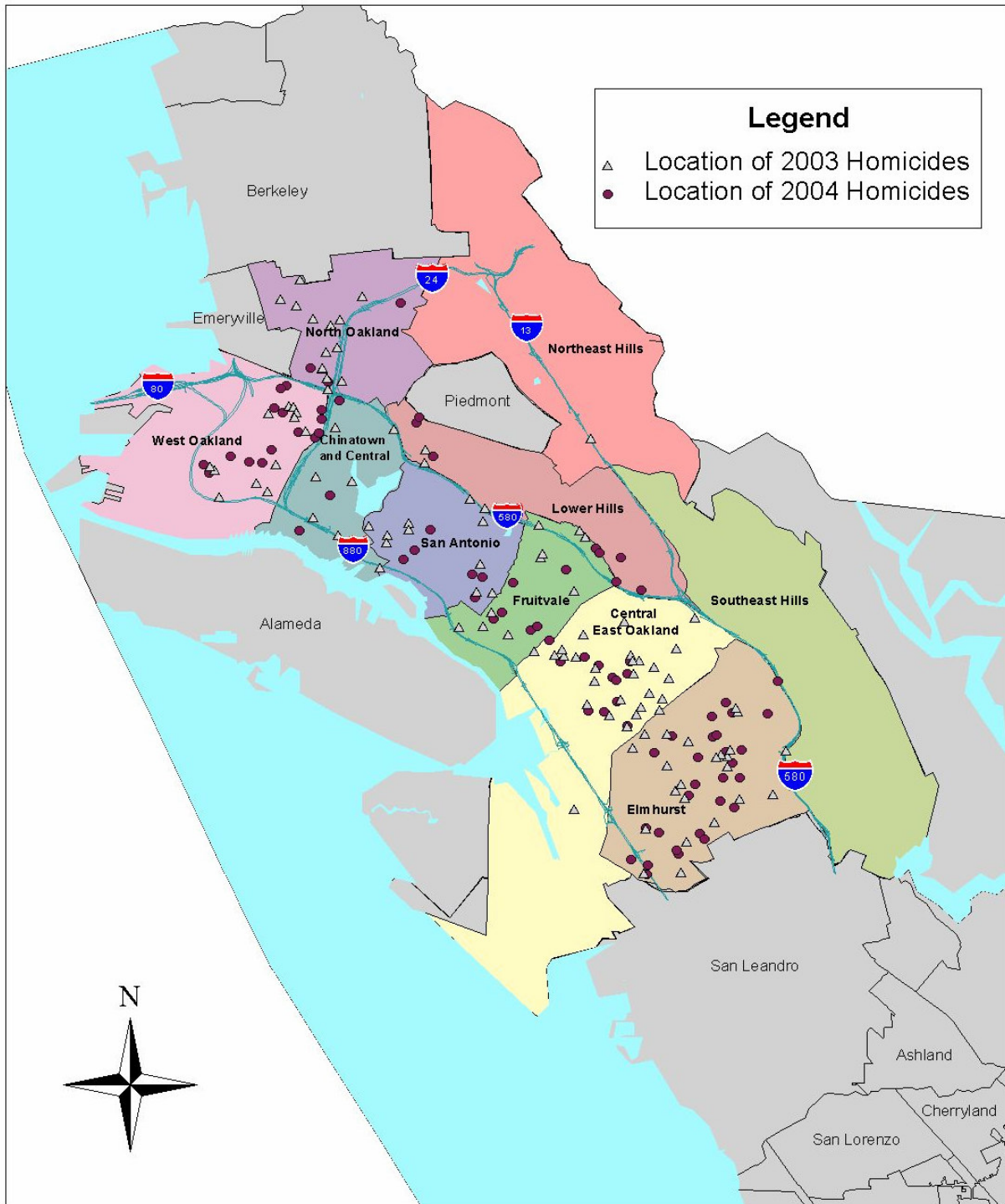
Neighborhood	2003		2004		Annual Percent Change 2003-2004	Annual Change in Count 2003-2004
	Count	Percent of Total	Count	Percent of Total		
Central East Oakland	28	24.6	14	15.9	-50.0	-14
Chinatown and Central	6	5.3	3	3.4	-50.0	-3
Elmhurst	24	21.1	30	34.1	25.0	6
Fruitvale	12	10.5	9	10.2	-25.0	-3
Lower Hills	3	2.6	5	5.7	66.7	2
North Oakland	16	14.0	3	3.4	-81.3	-13
Northeast Hills	1	0.9	0	0.0	-100.0	-1
San Antonio	12	10.5	7	8.0	-41.7	-5
Southeast Hills	0	0.0	0	0.0	N/A	0
West Oakland	12	10.5	17	19.3	41.7	5
Total	114	100.0	88.0	100.0	-22.8	-26

**Figure 8a. Oakland Homicides by Neighborhood, 2003-2004**





**Figure 8b. Map of Oakland Homicides by Neighborhood, 2003-2004**



Source: Oakland Police Department 2004, The Oakland Tribune 2003  
 Map produced by the Urban Strategies Council, January 2005

## IX. City Council Districts Where Incidents Occurred

- In 2002, the majority of Oakland homicides occurred in District 3 (26%), District 6 (20%), and District 7 (20%).
- In 2003, District 3 saw a large decrease in homicides making up only (15%) of the citywide total compared to almost 26% in 2002. The proportion of homicides occurring in District 6 and District 7 remained level at 20% across 2002 and 2003. District 1's and District 4's contribution increased the most between 2002 and 2003, both nearly doubling.
- In 2004, the proportion of homicides occurring in District 3 increased to 2002 levels (25%). Homicides increased most in District 7, where the proportion of citywide homicides rose from 21% to 34%. District 1 saw a substantial decrease in homicides, contributing only 1% to citywide homicides in 2004.
- Over the three-year period, District 2 saw a steady decline in homicides, while District 5 and District 7 both increased every year.

**Table 9a. Oakland Homicides by City Council District, 2002-2004**

City Council District	2002		2003		2004		Annual Percent Change		Total Percent Change
	Count	Percent of Total	Count	Percent of Total	Count	Percent of Total	2002-2003	2003-2004	2002-2004
District 1	8	7.1	15	13.2	1	1.1	87.5	-93.3	-87.5
District 2	16	14.2	14	12.3	6	6.8	-12.5	-57.1	-62.5
District 3	29	25.7	17	14.9	22	25.0	-41.4	29.4	-24.1
District 4	4	3.5	9	7.9	4	4.5	125.0	-55.6	0.0
District 5	11	9.7	12	10.5	13	14.8	9.1	8.3	18.2
District 6	22	19.5	23	20.2	12	13.6	4.5	-47.8	-45.5
District 7	23	20.4	24	21.1	30	34.1	4.3	25.0	30.4
Oakland	113	100.0	114	100.0	88	100.0	0.9	-22.8	-22.1

**Figure 9a. Oakland Homicides by City Council District, 2002-2004**

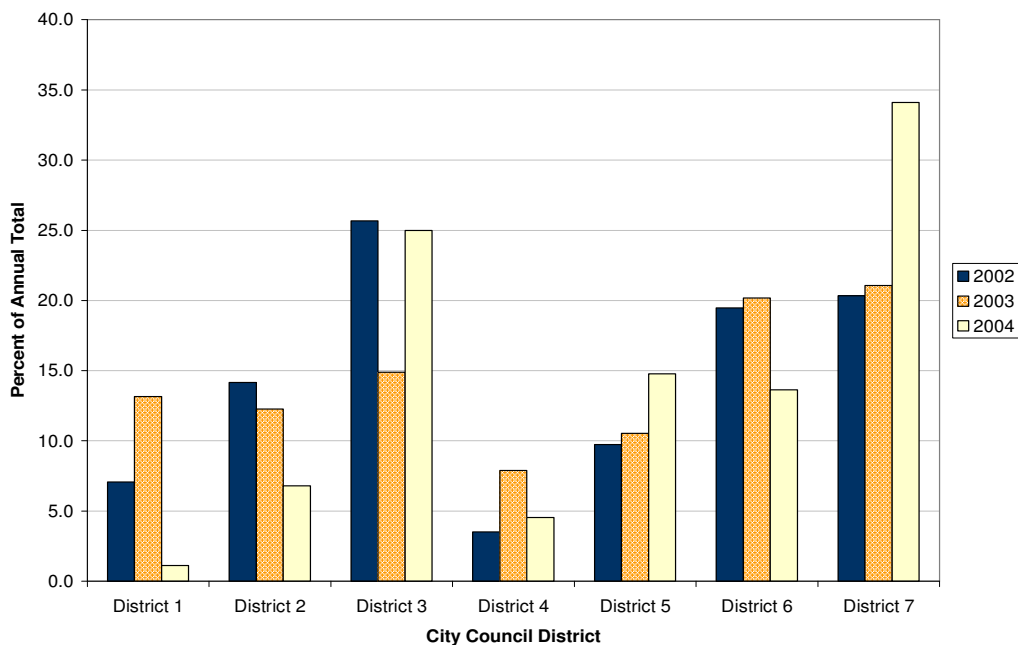
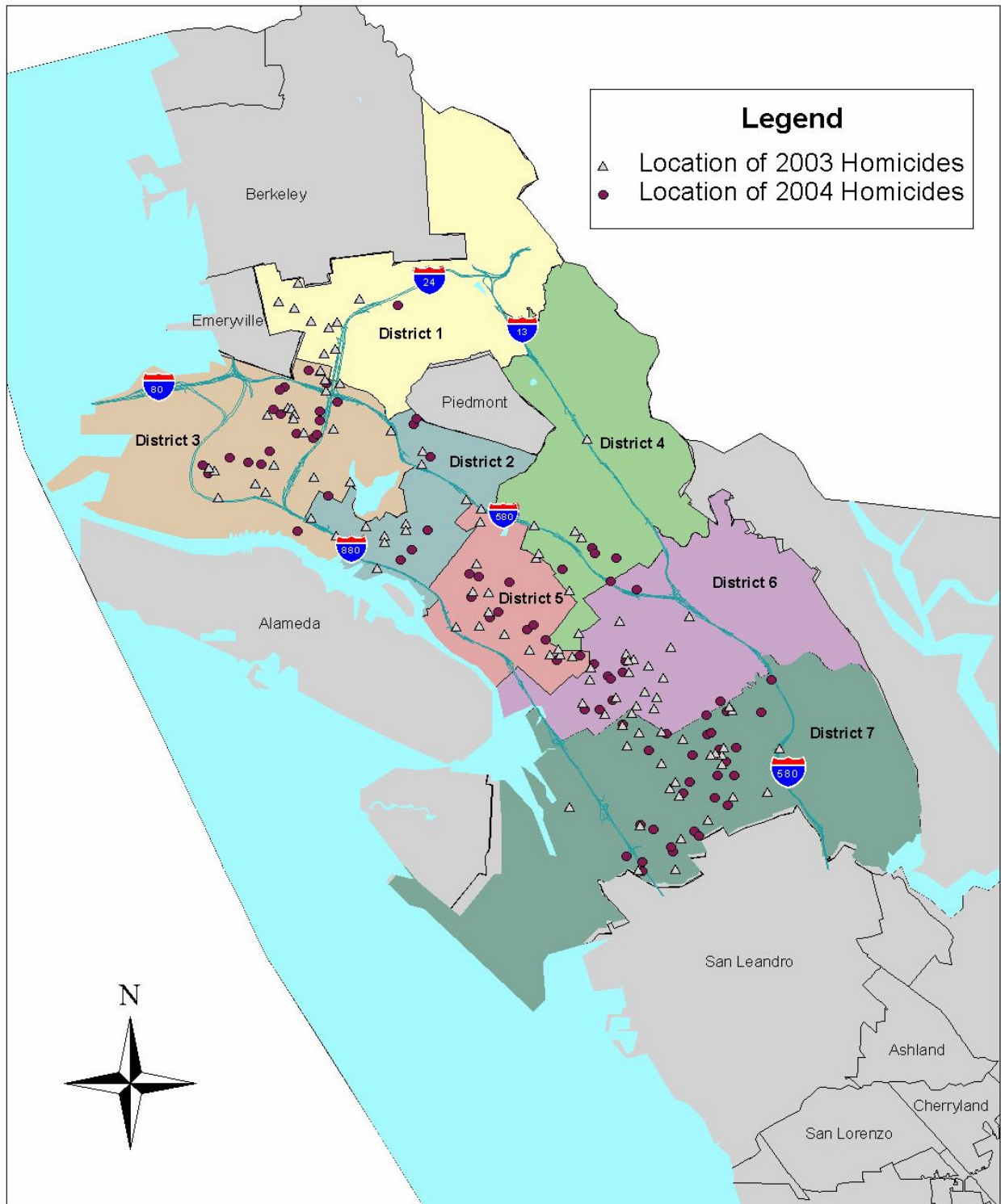


Figure 9b. Map of Oakland Homicides by City Council District, 2003-2004



Source: Oakland Police Department 2004, The Oakland Tribune 2003  
Map produced by the Urban Strategies Council, January 2005

## X. Police Service Areas Where Incidents Occurred

- In 2003, more than one in four homicides (26%) occurred in Police Service Area 5 (PSA). A substantial proportion of homicides also occurred in PSA 6 (19%). Between 10% and 15% of the remaining homicides occurred in the other PSAs, except the Metro PSA, in which only 4% of homicides occurred.
- In 2004, homicides increased most in PSA 6, to a peak of 30% of the citywide total. Homicides also increased, though to a lesser degree, in PSA 1 and PSA 4. All other PSAs saw a decrease in homicides, most noticeably in PSA 2 where homicides decreased by more than 80% percent.

**Table 10a. Oakland Homicides by Police Service Area (PSA), 2003-2004**

Table 10a: Police Service Area (PSA) of Homicide					Annual Percent Change	Annual Change in Count
PSA*	2003		2004		2003-2004	2003-2004
	Count	Percent of Total	Count	Percent of Total		
Metro	4	3.5	2	2.3	-50.0	-2
PSA 1	17	14.9	19	21.6	11.8	2
PSA 2	12	10.5	2	2.3	-83.3	-10
PSA 3	14	12.3	7	8.0	-50.0	-7
PSA 4	15	13.2	16	18.2	6.7	1
PSA 5	30	26.3	16	18.2	-46.7	-14
PSA 6	22	19.3	26	29.5	18.2	4
Total	114	100.0	88	100.0	-22.8	-26

\*See Figure 10b for a map depicting PSA boundaries.

**Figure 10a. Oakland Homicides by Police Service Area (PSA), 2003-2004**

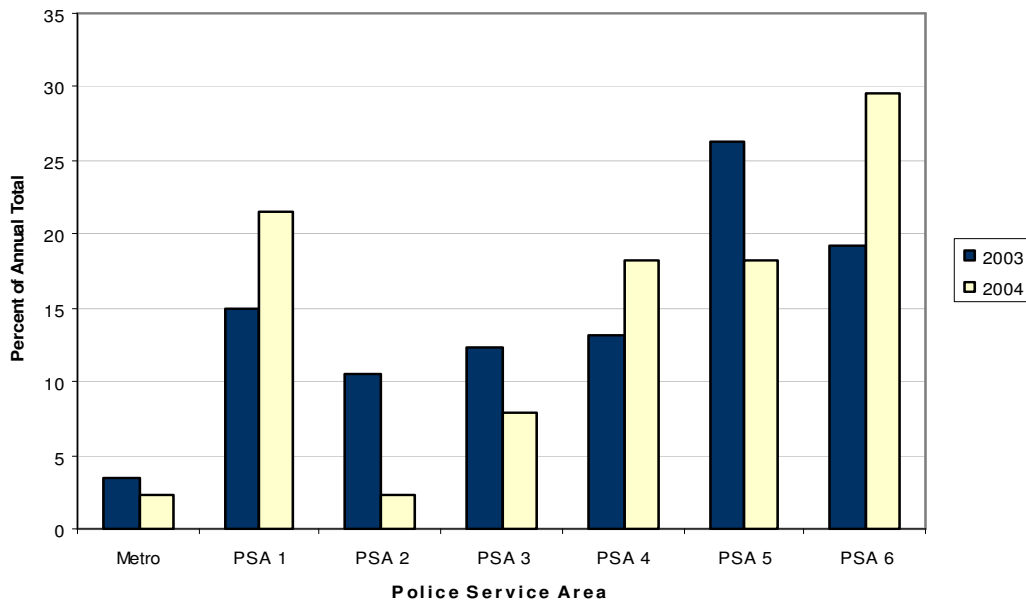
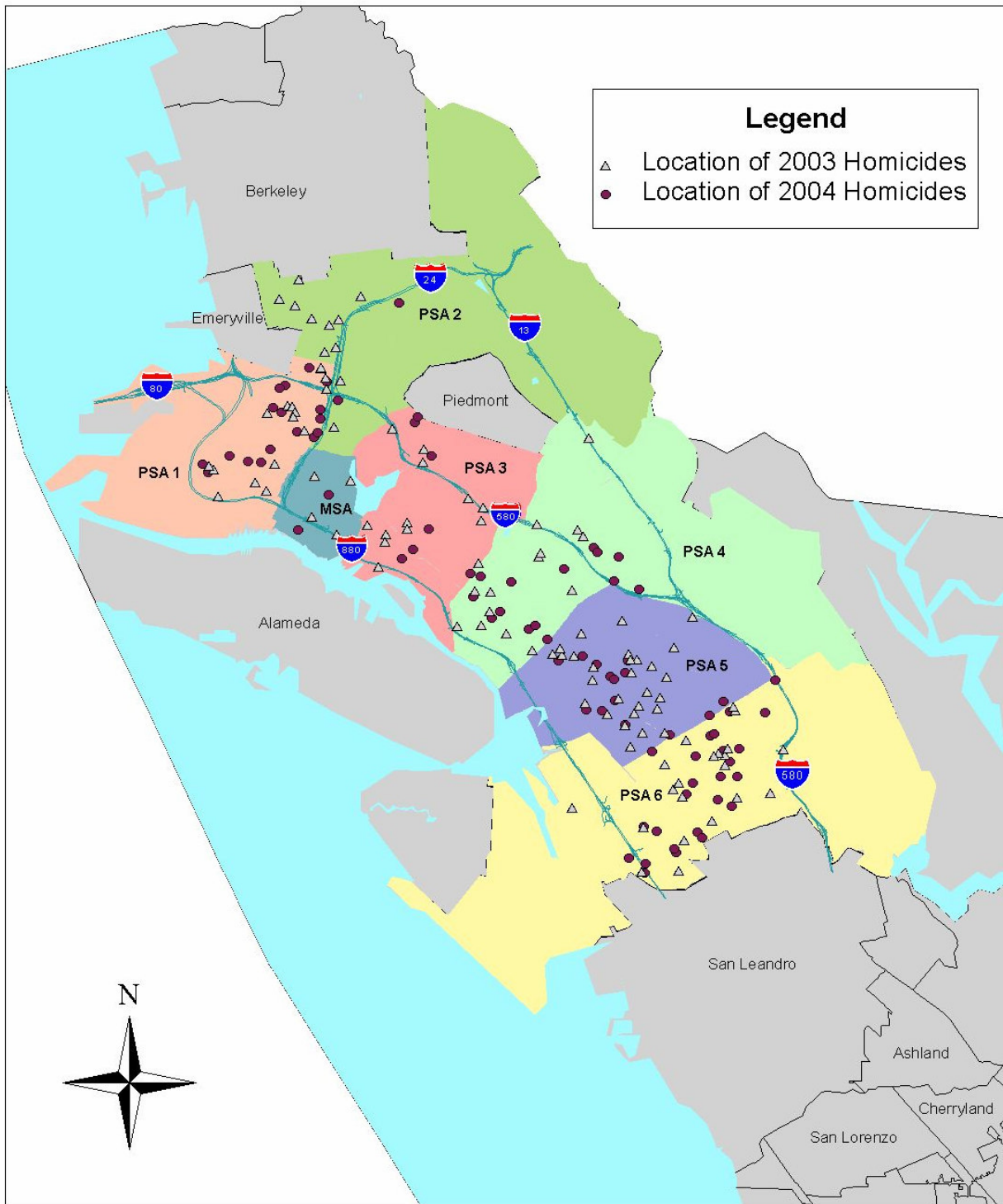


Figure 10b. Map of Oakland Homicides by Police Service Area (PSA), 2003-2004



Source: Oakland Police Department 2004, The Oakland Tribune 2003  
Map produced by the Urban Strategies Council, January 2005



## XI. Methods of Death

- The most common homicide weapon in 2002, 2003 and 2004 was a firearm.
- However, the percentage of homicides committed with a firearm has declined steadily over the past three years from 85% in 2002 to 73% in 2004, for an overall decrease of 33%.
- The most rapidly increasing method of death is blunt trauma, which increased from a single homicide in 2002, to three homicides in 2003, to a high of ten homicides in 2004, despite the substantial decrease in total homicides between 2003 and 2004.

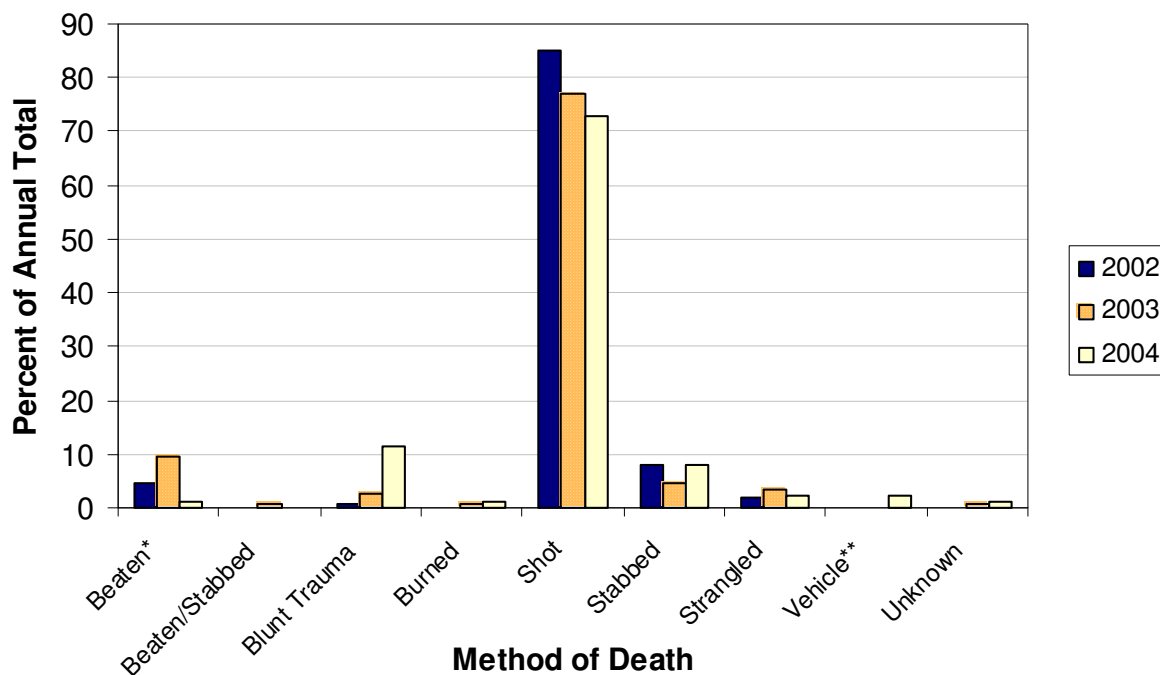
**Table 11a. Oakland Homicides by Method of Death, 2002-2004**

Method of Death	2002		2003		2004		Annual Percent Change		Total Percent Change
	Count	Percent of Total	Count	Percent of Total	Count	Percent of Total	2002-2003	2003-2004	2002-2004
Beaten*	5	4.4	11	9.6	1	1.1	120.0	-90.9	-80.0
Beaten/Stabbed	0	0.0	1	0.9	0	0.0	N/A	-100.0	N/A
Blunt Trauma	1	0.9	3	2.6	10	11.4	200.0	233.3	900.0
Burned	0	0.0	1	0.9	1	1.1	N/A	0.0	N/A
Shot	96	85.0	88	77.2	64	72.7	-8.3	-27.3	-33.3
Stabbed	9	8.0	5	4.4	7	8.0	-44.4	40.0	-22.2
Strangled	2	1.8	4	3.5	2	2.3	100.0	-50.0	0.0
Vehicle**	N/A	N/A	N/A	N/A	2	2.3	N/A	N/A	N/A
Unknown	0	0.0	1	0.9	1	1.1	N/A	0.0	N/A
<b>Total</b>	<b>113</b>	<b>100.0</b>	<b>114</b>	<b>100.0</b>	<b>88</b>	<b>100.0</b>	<b>0.9</b>	<b>-22.8</b>	<b>-22.1</b>

\*Beaten: Bludgeoning from OPD Homicide 2004 Report

\*\*Vehicle information not available for 2002, 2003.

**Figure 11a. Oakland Homicides by Method of Death, 2002-2004**



## XII. Twenty-Year Oakland Homicide Trends

- While the number of homicides may seem high, the level of homicides in Oakland in 2002 and 2003 was actually slightly below the average over the past twenty years. In both years, 27 homicides were committed per 100,000 Oakland residents, compared to a twenty-year average of 30 homicides per 100,000 residents.
- In 1992, Oakland homicides reached a peak of 44 per 100,000 residents.

**Table 12a. Twenty-Year Oakland Homicide Trends\***

Year	Oakland Population	Murders	Murders per 100,000
1984	357800	115	32
1985	360900	95	26
1986	363000	129	36
1987	366500	114	31
1988	367700	112	30
1989	370000	129	35
1990	372242	146	39
1991	378204	149	39
1992	378186	165	44
1993	379742	154	41
1994	381368	140	37
1995	381428	*	*
1996	383926	93	24
1997	389713	99	25
1998	397806	72	18
1999	401374	60	15
2000	399566	80	20
2001	402707	84	21
2002	406808	108	27
2003	408513	109	27
2004	411600	**	**
20-Year Mean***	-	113	30
20-Year Median	-	112	30

\*The UCR definition of homicide varies slightly from the definition that the Oakland Police Department uses in their year-end reports.

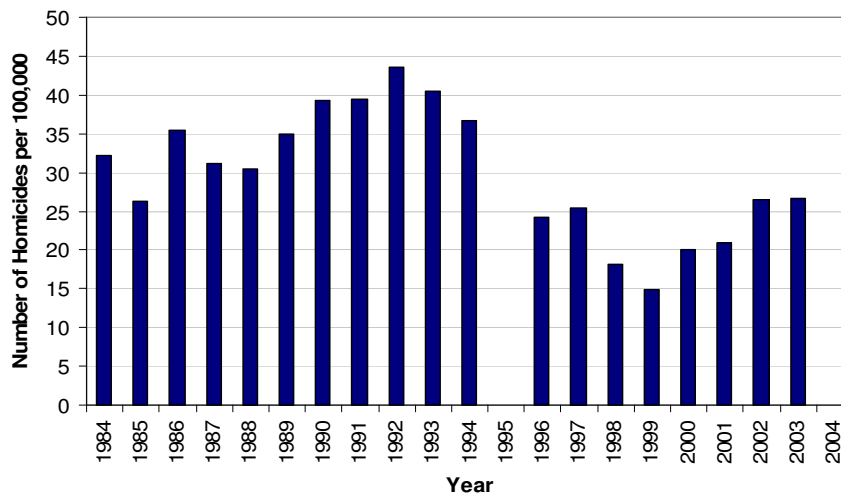
As a result, annual homicide totals in Table 12 and Figure 12 differ from those used in previous tables.

\*Oakland homicide figures were not reported to UCR in 1995

\*\*2004 Data not yet available.

\*\*\*Mean is calculated for years 1984 through 2003, excluding 1995

**Figure 12a. Twenty-Year Oakland Homicide Trends\***



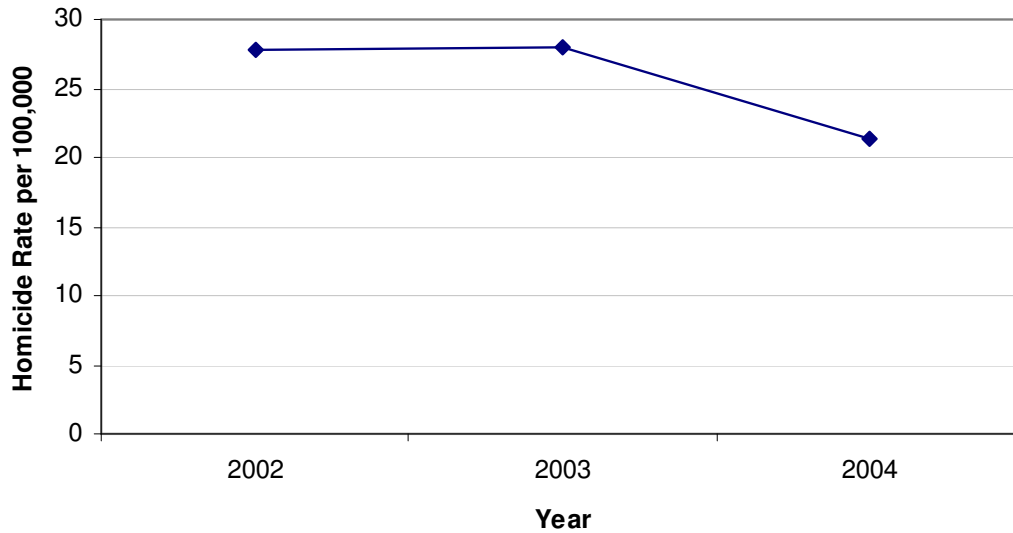
## Appendix A. Additional Analyses

**Table A1. Total Homicides in Oakland and Rate per 100,000 Population, 2002-2004**

	2002	2003	2004	Annual Percent Change		Total Percent Change
	Count	Count	Count	2002-2003	2003-2004	2002-2004
Total Homicides	113	114	88	0.9	-22.8	-22.1
Rate per 100,000*	28	28	21	-	-	-

\*Calculating the homicide rate per 100,000 population provides a measure of homicide frequency that controls for changes in Oakland's population. Population figures are taken from California Department of Finance City/County Population and Housing Estimates.

**Figure A1. Total Homicides in Oakland and Rate per 100,000 Population, 2002-2004**





**Table A2. Oakland Homicides by Police Beat, 2003-2004**

Police Beat	2003		2004		Annual Percent Change	Annual Change in Count
	Count	Percent of Total	Count	Percent of Total	2003-2004	2003-2004
01X	0	0.0	1	1.1	N/A	1
02X	2	1.8	2	2.3	0.0	0
02Y	3	2.6	3	3.4	0.0	0
03X	2	1.8	1	1.1	-50.0	-1
03Y	0	0.0	0	0.0	N/A	0
04X	2	1.8	0	0.0	-100.0	-2
05X	1	0.9	1	1.1	0.0	0
05Y	0	0.0	0	0.0	N/A	0
06X	6	5.3	8	9.1	33.3	2
07X	5	4.4	5	5.7	0.0	0
08X	2	1.8	1	1.1	-50.0	-1
09X	0	0.0	0	0.0	N/A	0
10X	3	2.6	0	0.0	-100.0	-3
10Y	3	2.6	0	0.0	-100.0	-3
11X	2	1.8	0	0.0	-100.0	-2
12X	0	0.0	0	0.0	N/A	0
12Y	2	1.8	1	1.1	-50.0	-1
13X	0	0.0	0	0.0	N/A	0
13Y	0	0.0	0	0.0	N/A	0
13Z	0	0.0	0	0.0	N/A	0
14X	1	0.9	0	0.0	-100.0	-1
14Y	1	0.9	3	3.4	200.0	2
15X	0	0.0	0	0.0	N/A	0
16X	1	0.9	0	0.0	-100.0	-1
16Y	1	0.9	0	0.0	-100.0	-1
17X	2	1.8	1	1.1	-50.0	-1
17Y	3	2.6	1	1.1	-66.7	-2
18X	0	0.0	1	1.1	N/A	1
18Y	1	0.9	0	0.0	-100.0	-1
19X	4	3.5	1	1.1	-75.0	-3
20X	4	3.5	3	3.4	-25.0	-1
21X	2	1.8	2	2.3	0.0	0
21Y	2	1.8	1	1.1	-50.0	-1
22X	2	1.8	0	0.0	-100.0	-2
22Y	2	1.8	1	1.1	-50.0	-1
23X	2	1.8	1	1.1	-50.0	-1
24X	0	0.0	3	3.4	N/A	3
24Y	1	0.9	1	1.1	0.0	0
25X	0	0.0	4	4.5	N/A	4
25Y	0	0.0	0	0.0	N/A	0
26X	0	0.0	0	0.0	N/A	0
26Y	5	4.4	4	4.5	-20.0	-1
27X	5	4.4	1	1.1	-80.0	-4
27Y	4	3.5	6	6.8	50.0	2
28X	2	1.8	0	0.0	-100.0	-2
29X	5	4.4	1	1.1	-80.0	-4
30X	9	7.9	1	1.1	-88.9	-8
30Y	0	0.0	3	3.4	N/A	3
31X	1	0.9	0	0.0	-100.0	-1
31Y	2	1.8	4	4.5	100.0	2
31Z	2	1.8	4	4.5	100.0	2
32X	1	0.9	4	4.5	300.0	3
32Y	2	1.8	0	0.0	-100.0	-2
33X	4	3.5	3	3.4	-25.0	-1
34X	6	5.3	7	8.0	16.7	1
35X	4	3.5	4	4.5	0.0	0
35Y	0	0.0	0	0.0	N/A	0
Total	114	100	88	100	-22.8	-26

**Figure A2. Map of Oakland Homicides by Police Beat, 2003-2004**



Source: Oakland Police Department 2004, The Oakland Tribune 2003  
Map produced by the Urban Strategies Council, January 2005

## Sources

Data for 2002 and 2003 (except Table and Figure 12), were taken from the *Oakland Tribune*, “Oakland Homicide Victims, 2002,” chart, February 19, 2003; and “Oakland Homicide Victims, 2003,” chart, February 11, 2004.

Data for 2004 (except Table and Figure 12) were taken from the Oakland Police Department Homicide Section “Monthly Statistical Report,” December 2004 (2004 Year End Report).

Twenty-year trend data in Table 12 and Figure 12 were reported to the Federal Bureau of Investigation’s Uniform Crime Reporting Program by the Oakland Police Department. The data were retrieved from the National Archive of Criminal Justice Data.

Oakland population figures used to calculate homicide rates were taken from the California Department of Finance’s Annual City and County Population and Housing Estimates.