

Influence of Electrodes, Light, and Air on Organic Photovoltaic Stability and Various Device Protection Strategies

Matthew O. Reese, Anthony J. Morfa,
Matthew S. White, Nikos Kopidakis,
Sean E. Shaheen, Garry Rumbles, David S. Ginley

NREL/PR-270-43290

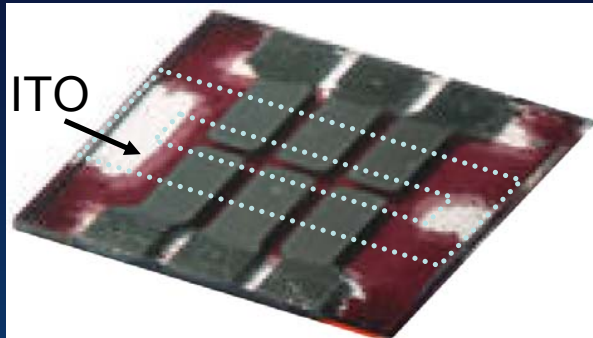
Presented at the 33rd IEEE Photovoltaic Specialist Conference held May 11-16, 2008 in San Diego, California



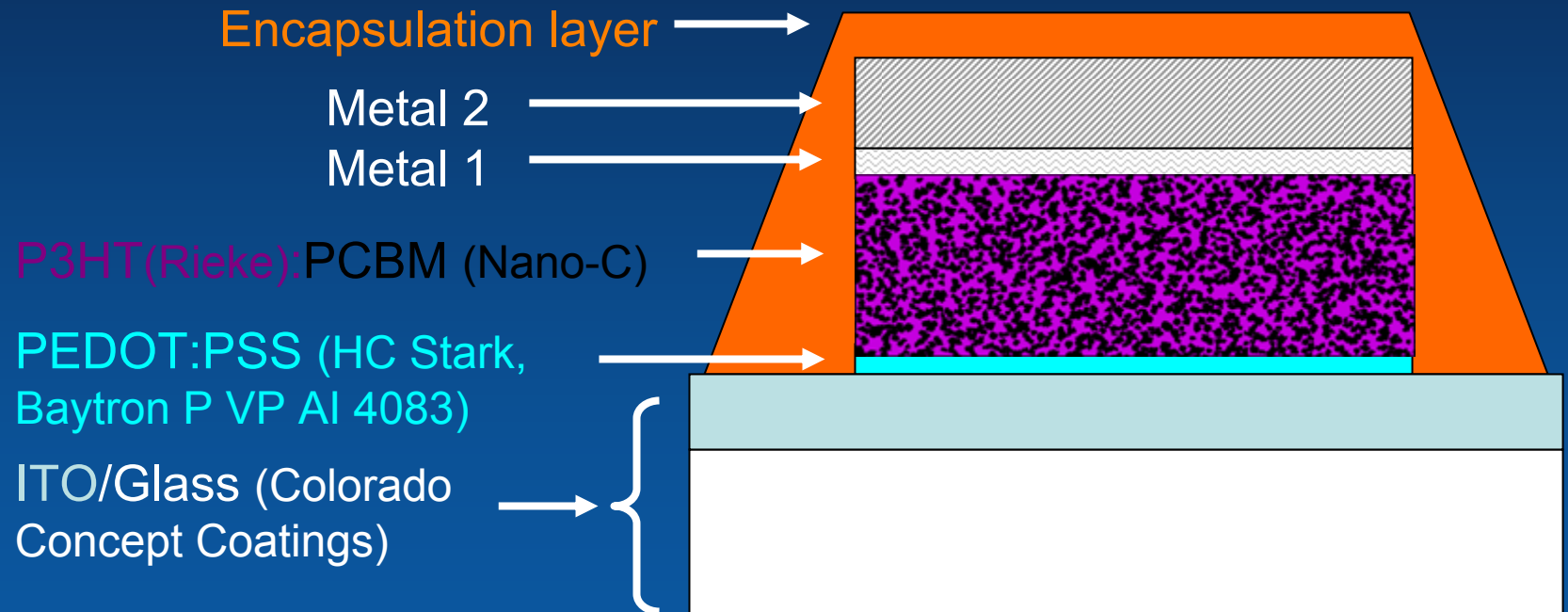
Introduction

- OPV model system
- Electrode type
- Light vs. dark stability in inert atmosphere
- Light vs. dark: active layer or metal/organic interface
- Light degradation mitigation strategies in air

Prototypical Sample

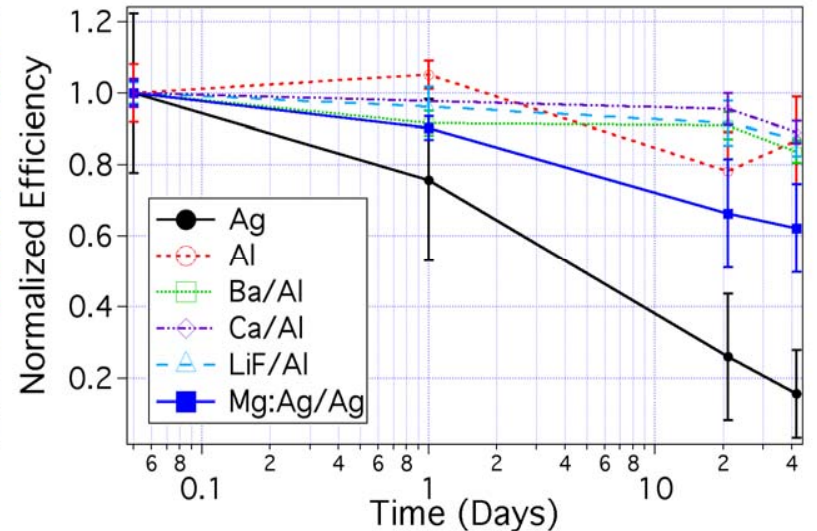
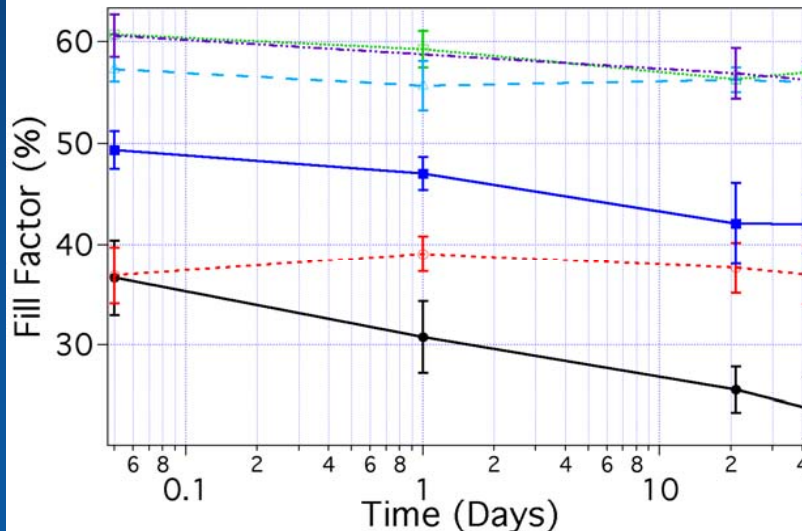
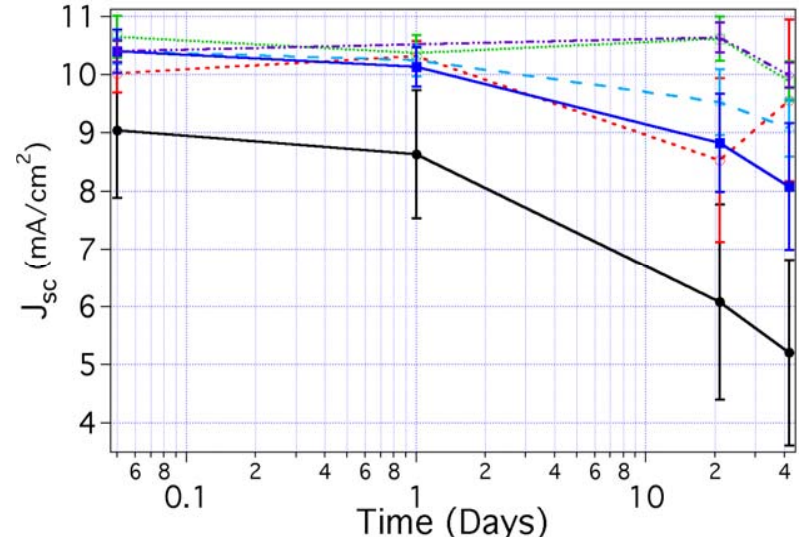
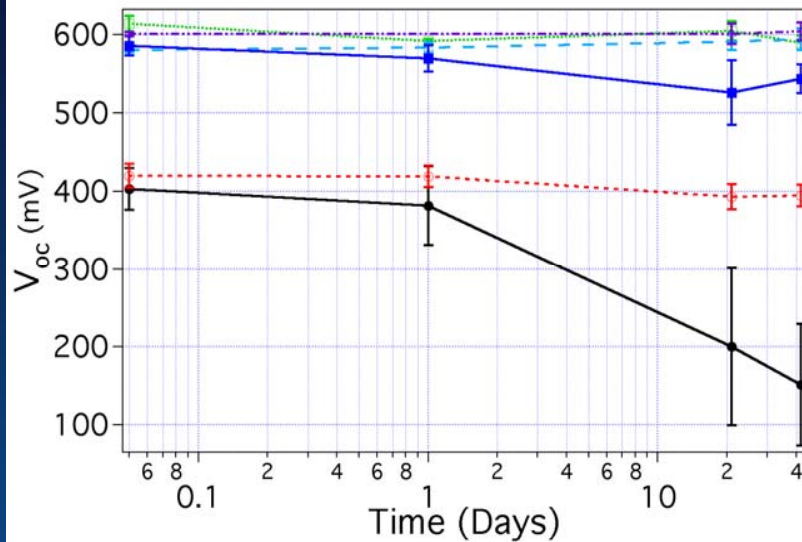


The active layer is P3HT:PCBM 1:1 wt ratio, [50 mg/mL] solvent annealed from 1,2-dichlorobenzene¹



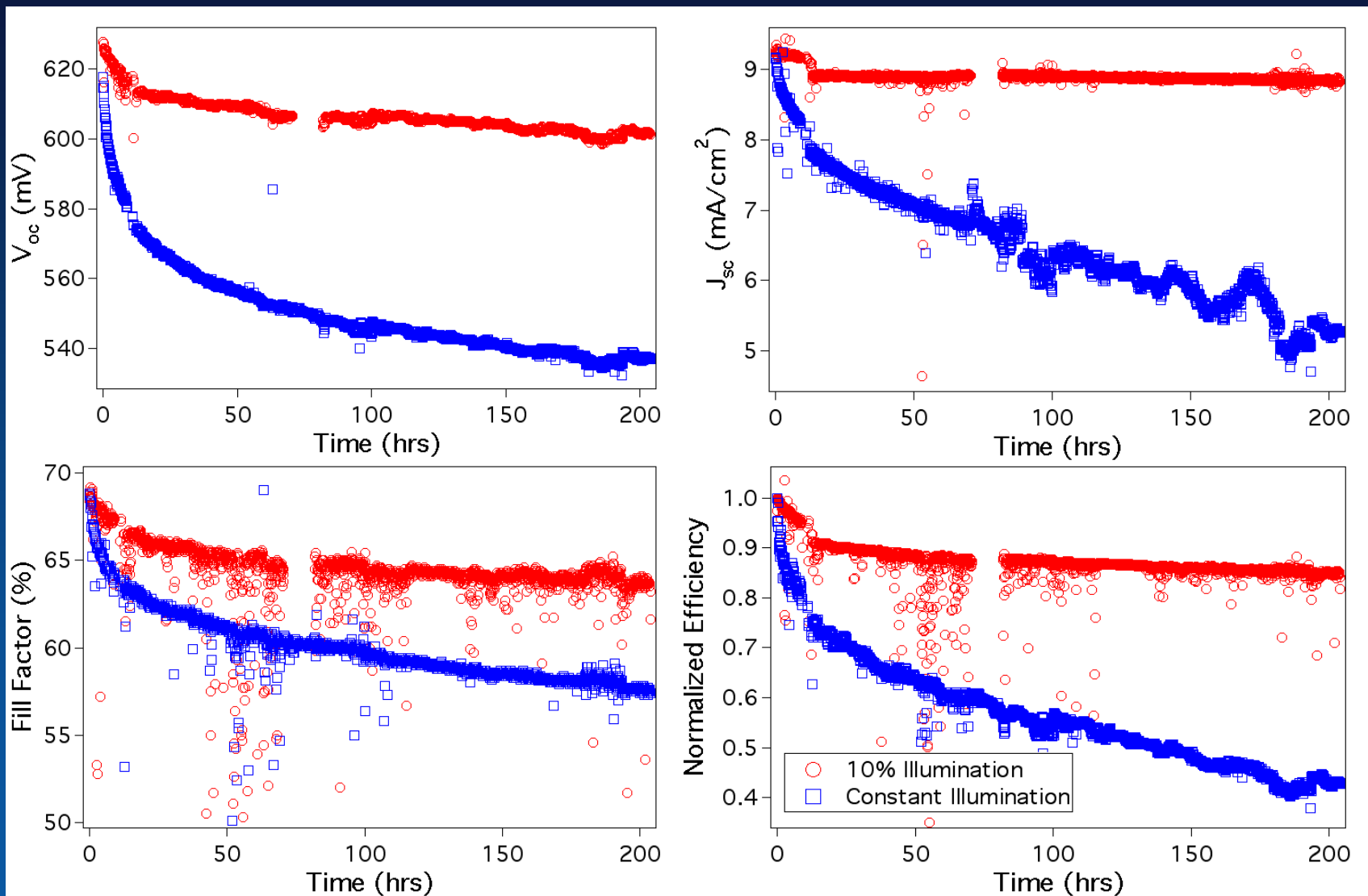
1. G. Li, *et al.*, Nat. Mater. 4 (2005) 864.

Electrode Type Study (Six week shelf life study)

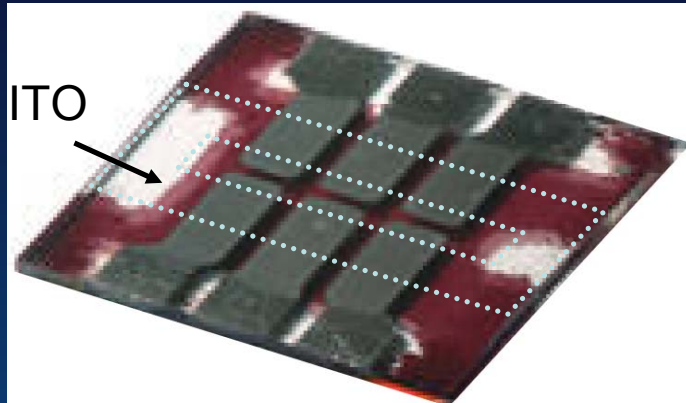


1. M.O. Reese, *et al.*, Appl. Phys. Lett. 92 (2008) 053307.
2. M.O. Reese, *et al.*, Sol. Energy Mater. Sol. Cells 92 (2008) 746.

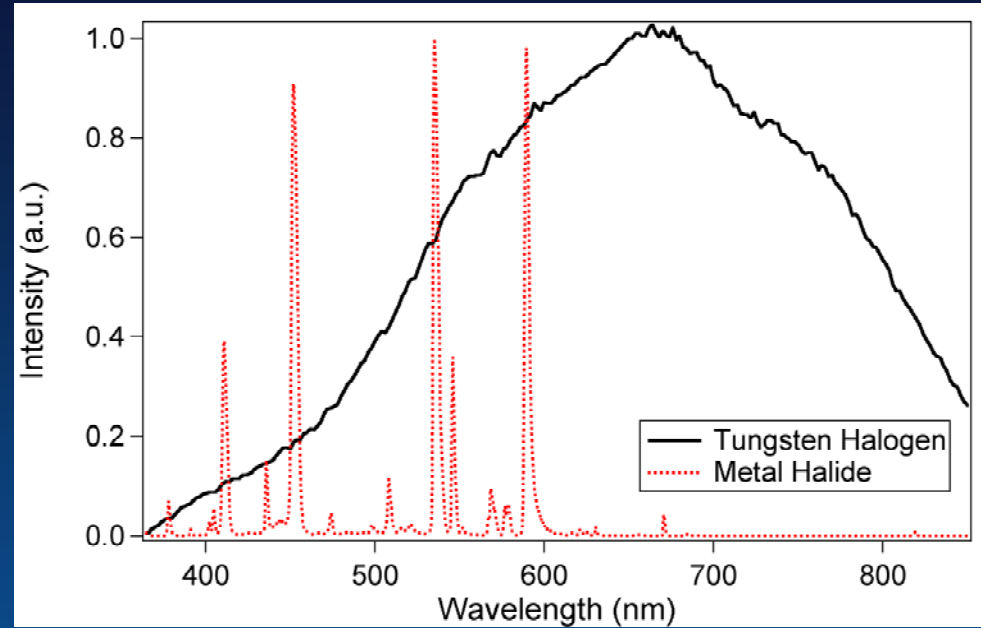
Light vs. Dark Stability in Inert Atmosphere



Delayed Contacts - Metal/Organic Interface



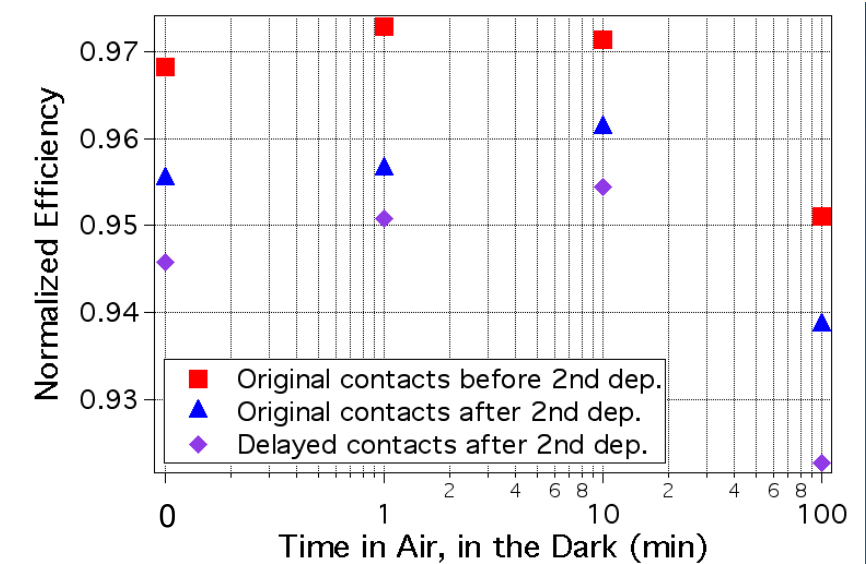
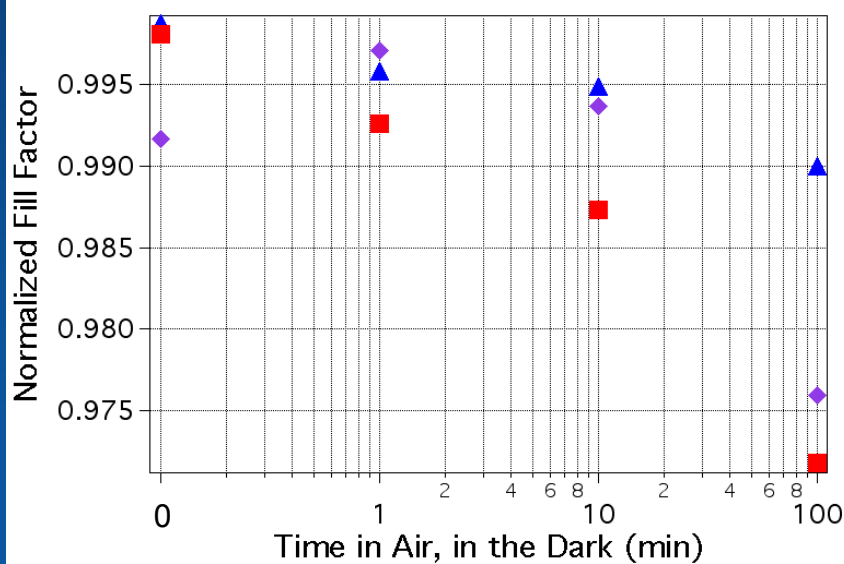
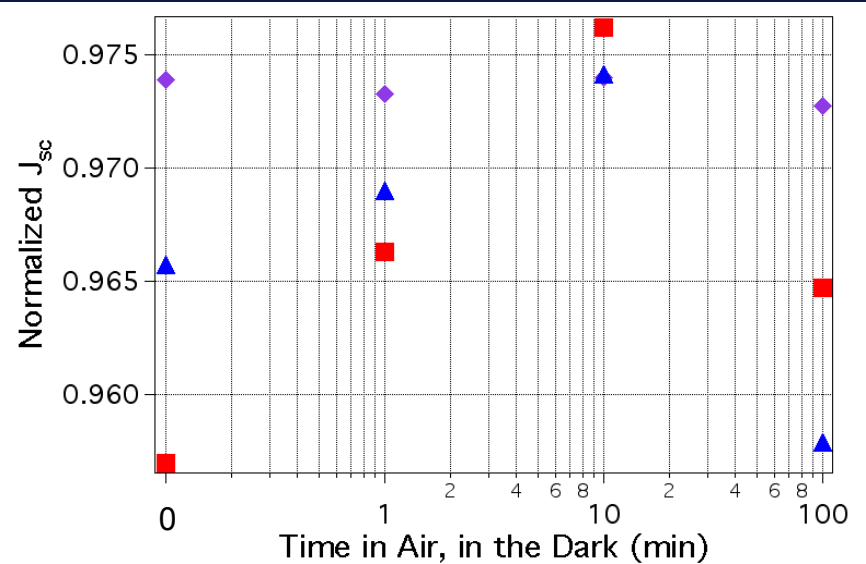
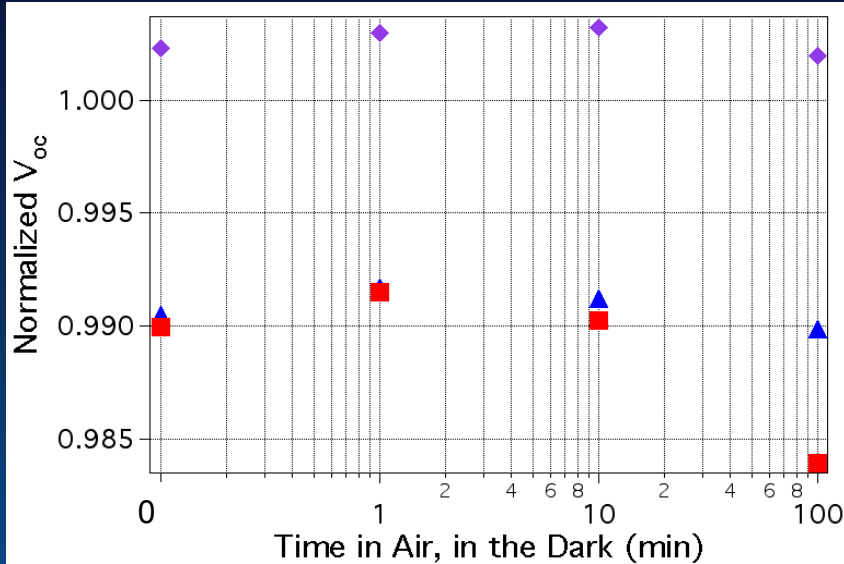
- Ambient → Metal Halide
- Glovebox → Tungsten Halogen (EXT)
- Devices illuminated for 10 days before delayed contacts



Contacts	Glovebox 10% Illumination (#1)			Glovebox Constant Illumination (#2)			Air Constant Illumination (#3)	
	Original ($t=t_0$)	Original ($t=t_f$)	Delayed ($t=t_f$)	Original ($t=t_0$)	Original ($t=t_f$)	Delayed ($t=t_f$)	Original ($t=t_f$)	Delayed ($t=t_f$)
V_{oc} (mV)	624	601	614	615	559	591	564	278
J_{sc} (mA/cm ²)	9.25	9.18	9.20	9.48	4.95	8.26	6.76	9.3×10^{-5}
FF (%)	68.3	63.6	65.2	68.2	53.2	57.0	58.3	29.0
Efficiency (%)	3.95	3.51	3.68	3.97	1.47	2.78	2.22	7.5×10^{-6}

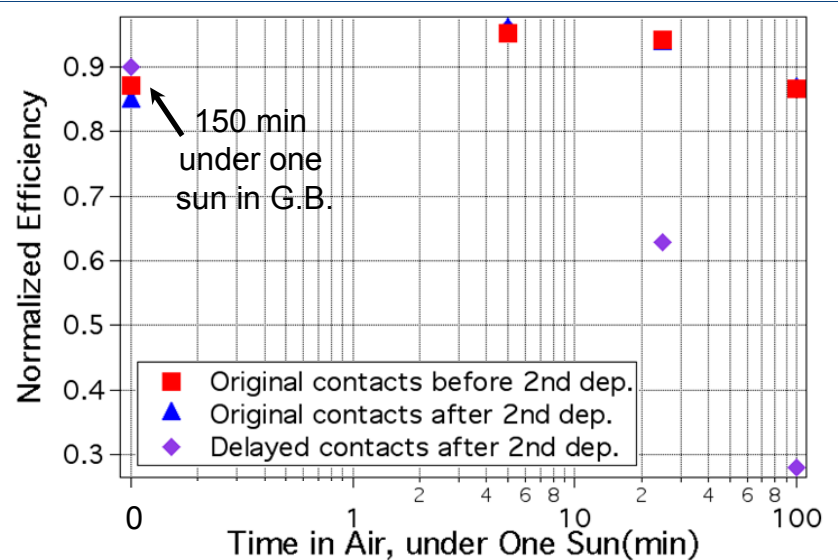
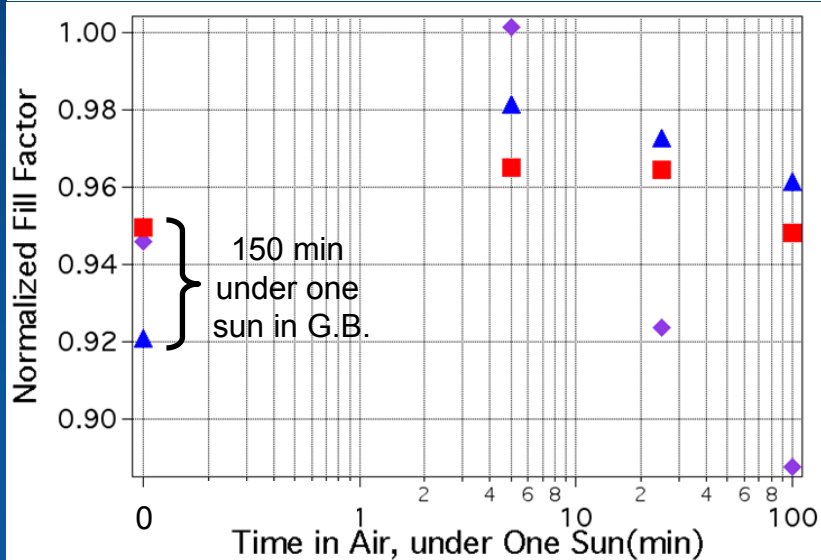
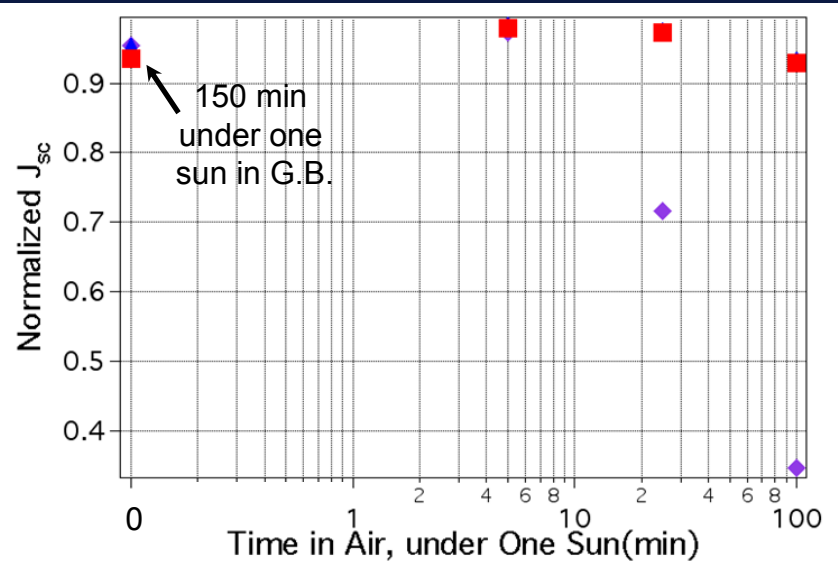
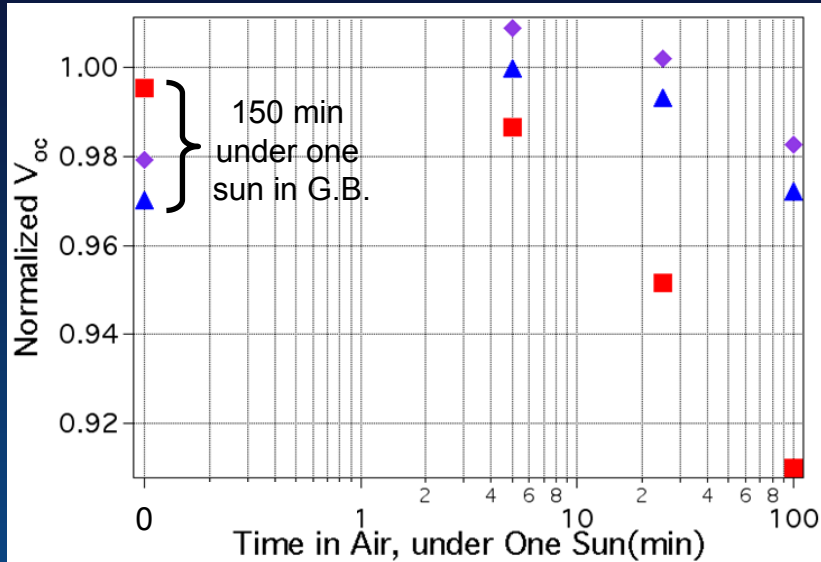
Delayed Contacts #2

What timescale (in the dark)?



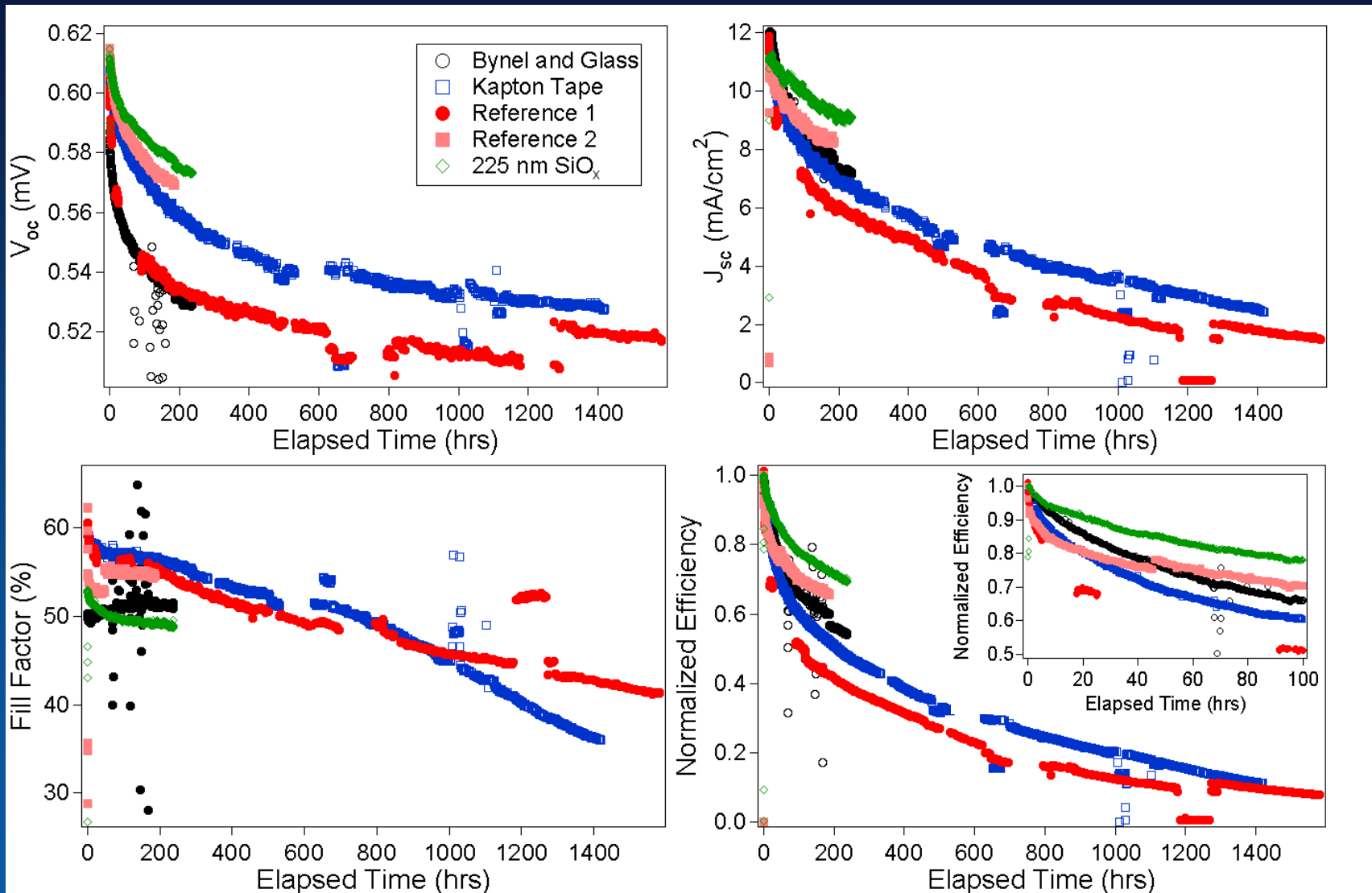
Delayed Contacts #3

What timescale (under one sun illumination)?



- Original contacts before 2nd dep.
- ▲ Original contacts after 2nd dep.
- ◆ Delayed contacts after 2nd dep.

Ambient Tests



Conclusions

- Ag electrodes → inherently unstable
- Ca/Al electrodes → high eff. + stability
- Photoactivated/temperature instability in inert atmosphere
- Metal/organic interface may be a significant contributor to degradation (photoactivated?)
- Surprising robustness of devices in air and dark
- Organic surface degrades in tens of minutes under one sun illumination
- Short timescale modulated by encapsulation