

# Development of Standardized Domestic Hot Water Event Schedules for Residential Buildings

R. Hendron and J. Burch

*Presented at Energy Sustainability 2007  
Long Beach, California  
June 27–30, 2007*

*Conference Paper*  
**NREL/CP-550-40874**  
**August 2008**

NREL is operated by Midwest Research Institute • Battelle Contract No. DE-AC36-99-GO10337



## NOTICE

The submitted manuscript has been offered by an employee of the Midwest Research Institute (MRI), a contractor of the US Government under Contract No. DE-AC36-99GO10337. Accordingly, the US Government and MRI retain a nonexclusive royalty-free license to publish or reproduce the published form of this contribution, or allow others to do so, for US Government purposes.

This report was prepared as an account of work sponsored by an agency of the United States government. Neither the United States government nor any agency thereof, nor any of their employees, makes any warranty, express or implied, or assumes any legal liability or responsibility for the accuracy, completeness, or usefulness of any information, apparatus, product, or process disclosed, or represents that its use would not infringe privately owned rights. Reference herein to any specific commercial product, process, or service by trade name, trademark, manufacturer, or otherwise does not necessarily constitute or imply its endorsement, recommendation, or favoring by the United States government or any agency thereof. The views and opinions of authors expressed herein do not necessarily state or reflect those of the United States government or any agency thereof.

Available electronically at <http://www.osti.gov/bridge>

Available for a processing fee to U.S. Department of Energy and its contractors, in paper, from:

U.S. Department of Energy  
Office of Scientific and Technical Information  
P.O. Box 62  
Oak Ridge, TN 37831-0062  
phone: 865.576.8401  
fax: 865.576.5728  
email: <mailto:reports@adonis.osti.gov>

Available for sale to the public, in paper, from:

U.S. Department of Commerce  
National Technical Information Service  
5285 Port Royal Road  
Springfield, VA 22161  
phone: 800.553.6847  
fax: 703.605.6900  
email: [orders@ntis.fedworld.gov](mailto:orders@ntis.fedworld.gov)  
online ordering: <http://www.ntis.gov/ordering.htm>



# DEVELOPMENT OF STANDARDIZED DOMESTIC HOT WATER EVENT SCHEDULES FOR RESIDENTIAL BUILDINGS

**Robert Hendron**

National Renewable Energy Laboratory  
Golden, CO

**Jay Burch**

National Renewable Energy Laboratory  
Golden, CO

## ABSTRACT

The Building America Research Benchmark is a standard house definition created as a point of reference for tracking progress toward multi-year energy savings targets. As part of its development, the National Renewable Energy Laboratory (NREL) has established a set of domestic hot water events to be used in conjunction with sub-hourly analysis of advanced hot water systems. In certain applications (including analysis of recirculation loops, distribution losses, tankless gas water heaters, and solar hot water systems with load-side heat exchangers) energy use can be strongly affected by event flow rate, duration, frequency, clustering, and time of occurrence. High-level constraints on mains temperature and average daily hot water use, along with detailed event characteristics derived from past research and a software tool developed by Kassel University in Germany, were used to generate hot water events over one year for houses of different sizes in various locations. The events were established in 6-min increments for showers, baths, sinks, clothes washers, and dishwashers. Flow rates and times of occurrence varied randomly based on specified probability distributions. The final event schedules reflected the same daily variability as an actual household, thereby providing more realism to energy simulations involving advanced water heating systems.

## NOMENCLATURE

day#	Julian day of the year (1-365)
lag	$35 - 1.0 (T_{amb,avg} - 44)$
$N_{br}$	Number of bedrooms
offset	6°F
ratio	$0.4 + 0.01 (T_{amb,avg} - 44)$
$T_{mains}$	Mains (supply) temperature to domestic hot water tank (°F)
$T_{amb,avg}$	Annual average ambient air temperature (°F)
$V_{d,avg}$	Annual average volume of hot water (gal)
$V_{d,wk-day}$	Daily volume of hot water: weekday (gal)
$V_{d,wk-end}$	Daily volume of hot water: weekend (gal)
$V_h$	Hourly volume of hot water (gal)

$\Delta T_{amb,max}$	Maximum difference between monthly average ambient temperatures (°F)
$\Delta t_{draw}$	Hot water draw duration (sec)
$\Delta t_{time-step}$	Simulation time step (sec)
$\mu_{fr}$	Average event flow rate (l/hr)
$\sigma_{fr}$	Flow rate standard deviation (l/hr)

## INTRODUCTION

The Building America Program sponsored by the U.S. Department of Energy (DOE) has defined a series of climate-dependent whole-house energy savings goals (e.g., achieve 40% savings in hot/dry climates by 2007), eventually leading to cost-neutral zero-energy homes in all climates by 2020. Tracking progress toward these goals necessitates the use of a “Benchmark” house. The Benchmark defines climate-dependent building characteristics and operational schedules, including those for domestic hot water (DHW) use [1]. The DHW time-of-day use profiles are based in part on the End-Use Load and Consumer Assessment Program (ELCAP) study conducted in the Pacific Northwest [2], and the average daily volume is a function of the number of bedrooms, the climate, and the season.

However, DHW use is quite complex, involving a spectrum of users and applications with varying inlet temperatures, volumes, flow rates, and timing. The major residential DHW end uses include sinks, showers, baths, dishwashers, and clothes washers, which are “discrete events” initiated by occupants. These events each have a characteristic range of flow rates and durations (or volumes), as in [3]. DHW use is also idiosyncratic by household. Average daily volume usage varies between households by an order of magnitude (~50 l/day to ~500 l/day), depending on occupant density and their habits [4]. Time-of-use varies widely also. For each household, there is both a deterministic component and a random component to DHW use. People tend to take showers, shave, clean dishes, etc. at more-or-less the same time each day, albeit somewhat differently on work-days vs. non-work days. On the other hand, DHW usage varies

stochastically with all the complexities of modern life, including somewhat random unoccupied/vacation periods, varying number of showers/person/day, varying number of loads of clothes and cycle temperatures, varying use of dishwashers, somewhat varying duration and flow rates for sink and shower events, and so on.

To predict DHW energy consumption using a simulation, an exogenous hot water draw profile must be chosen. However, the level of detail needed in the draw profile depends on the study objectives, as described in Table 1. The key draw parameters are the average daily volume, draw flow rates, timing of draws, and variability in draw patterns. When comparing storage water heaters without concern for runout (i.e., failure to deliver hot-enough water), the only parameter of any significance is the daily draw volume; draw flow rate and timing are mostly irrelevant. However, the performance of some DHW system components can also depend on the draw flow rate, timing, and/or day-to-day variability in load volume. The performance of a solar water heater (SWH) is sensitive to general load timing (especially integral-collector-storage systems) and to day-to-day variability (because of storage dynamics). In addition, the performance of a SWH with a load-side heat exchanger depends significantly on the flow rates of the hot water draws [5]. The analysis of losses from DHW distribution sub-systems also depends on the time between draws, as in [6]. For these cases it is necessary to specify a statistically realistic distribution for the key variables.

Most previous DHW system studies neglect variability and have employed relatively simple draw profiles. Timing is ignored in [7]. The schedule used in the U.S. for water heater testing [8] is defined as six draws of 11-gallons each, one hour apart, with a flow rate of 3 gpm. This schedule should be used only when  $V_{d,avg}$  is the only significant system variable, as with conventional storage water heaters. A simple 24-hour “double-humped” schedule with the flow rate set to  $V_h$ /hour is used for annual solar hot water system ratings by the Solar Rating and Certification Corporation (SRCC) [9]. There are at least four studies that have derived ensemble long-term averages for  $V_h$  [10], but there are very few differences among them. These hourly schedules work well if volume and timing are of concern, but flow rate and variability are not (as when *comparing* solar systems without load-side heat exchangers). To incorporate flow rate dependence, a constrained schedule was developed in [11]. Three flow rates were defined: 0.5 gpm (representing sink usage), 1.5 gpm (representing showers and dishwashers), and 2.5 gpm (representing baths and clothes washers). Two schedules (“yuppie” and “nuclear family”) were then assembled by defining a set of events (one of the three flow rates, start time, and duration of draw) subject to the following constraints:  $V_{d,avg} = 62$  gal/day; the flow rate distribution roughly matches that observed in a previous 12-house study [12]; there are weekday and weekend day types, with  $V_{d,wk-end} = 1.45 V_{d,wk-day}$ ; and  $\text{modulo}(\Delta t_{draw}, \Delta t_{time-step}) = 0$ . Similar profiles were developed in [13]. However, such profiles do not incorporate day-to-day variability and are misleading in predicting absolute performance of or optimizing SWH systems. The difficulty of defining “realistic” draw profiles led one group to incorporate house-years of raw data as a draw profile option [14]. This latter

approach is cumbersome and begs the question of how representative those arbitrarily-chosen 10 houses are.

The technical objective for the present study is to use published data related to average water volume, timing, variability, and frequency from previous studies to constrain otherwise randomly generated hot water events that can be used for all of the applications described in Table 1.

**Table 1 Study Objective vs Draw Characteristics Needed in the Draw Profile: Examples**

Study Objective	Draw Characteristics Needed
Comparing storage water heater energy <sup>a</sup>	Daily volume only
Sizing of storage water heater <sup>b</sup>	Timing, volume (“worst” draw sequence)
Compare SWH with load-side heat exchanger <sup>c</sup>	Volume, flow rate, timing, and variability
Minimize distribution network losses <sup>d</sup>	Volume, flow rate and timing

<sup>a</sup> *With no consideration of runout, as in [7]*

<sup>b</sup> *Runout is the key issue, as in [15]*

<sup>c</sup> *Load-side heat exchanger effectiveness depends on flow rate, as in [5]*

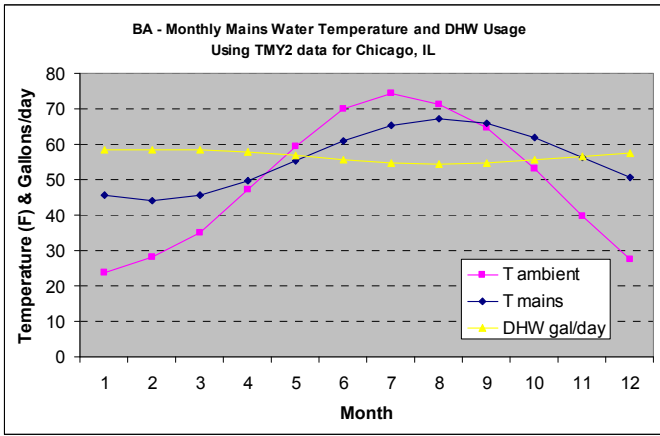
<sup>d</sup> *Compare recirculation types, minimize stranded water, as in [6]*

## TECHNICAL APPROACH

### Current Benchmark Approach

Until 2007, the Building America Benchmark used a relatively simple approach to defining hot water use. An essentially fixed daily volume was used for each of the 365 days in a year, with adjustments to the hot water use for showers, baths, and sinks, to reflect seasonal variations in mains temperature assuming a constant 120°F hot water supply temperature. Colder mains temperatures in winter would result in higher hot water use to maintain the same assumed mixed temperature of 105°F at the fixture. The mains temperature was calculated using Equation 1, which was developed based on a correlation derived from measured field data. The development of this equation is discussed further in [1]. An example mains temperature profile for Chicago is shown in Fig. 1.

$$T_{\text{mains}} = (T_{\text{amb,avg}} + \text{offset}) + \text{ratio} * (\Delta T_{\text{amb,max}} / 2) * \sin(0.986 * (\text{day\#} - 15 - \text{lag}) - 90) \quad (1)$$



**Fig. 1 Seasonal mains temperature profile for Chicago**

The daily average hot water use for the Benchmark was established as a linear function of the number bedrooms, which served as a surrogate variable for number of occupants. The relationship between bedrooms and occupants was based on the DOE’s 2001 Residential Energy Consumption Survey (RECS) [16]. Baths and showers were treated as one end-use until 2007, when they were split as part of this project because of their very different hourly profiles. Average daily volume for each end-use was established based on a survey of recent hot water studies and other authoritative references [4, 17-22]. These Benchmark daily hot water volumes are summarized in Table 2.

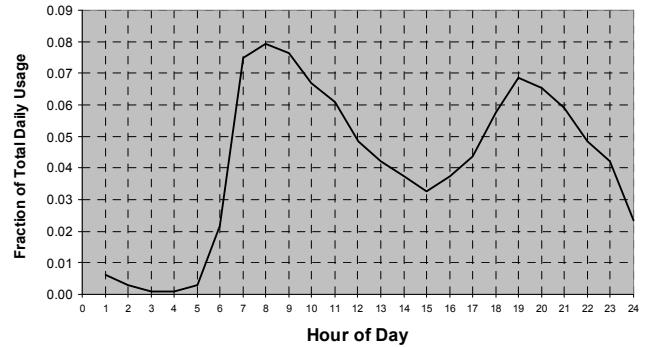
**Table 2 Benchmark water temperature and volume for each DHW end-use**

End Use	End-Use Water Temperature	Water Usage
Clothes Washer	120°F (Hot)	$7.5 + 2.5 \times N_{br}$ gal/day (Hot Only)
Dishwasher	120°F (Hot)	$2.5 + 0.833 \times N_{br}$ gal/day (Hot Only)
Shower	105°F (Mixed)	$14.0 + 4.67 \times N_{br}$ gal/day (Hot + Cold)
Bath	105°F (Mixed)	$3.5 + 1.17 \times N_{br}$ gal/day (Hot + Cold)
Sinks	105°F (Mixed)	$12.5 + 4.16 \times N_{br}$ gal/day (Hot + Cold)

A whole-house normalized DHW hourly profile was specified based on [23], and is shown in Fig. 2. More detailed end-use hourly profiles for clothes washers and dishwashers were established based on the ELCAP study [2]. A single hourly profile was used for all other end-uses, calculated by subtracting the clothes washer and dishwasher profiles from the combined hot water profile, assuming a typical 3-bedroom house in Memphis.

In most cases this level of detail was sufficient for accurate energy analysis of hot water systems. As more advanced techniques for reducing water heating energy became more commonplace in the quest for affordable Zero Energy Homes, it was clear that the Benchmark DHW specifications were overly simplistic and would not produce

accurate results in many cases. However, because the BA Benchmark represented the best available information that we could find on average water use, we decided to use the high-level parameters established for the Benchmark (hourly profiles, average daily volume) as constraints on the more detailed event schedules that we developed for this project.



**Fig. 2 Combined domestic hot water use profile for the Benchmark, representing average use**

**Drivers of DHW Events**

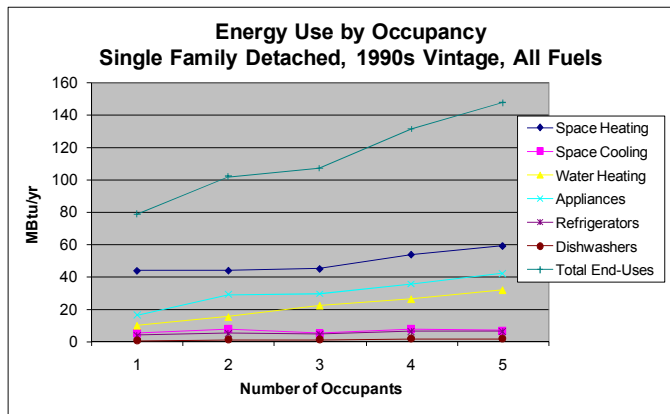
The most important driver of hot water events is occupant behavior. Differing habits among individuals, along with random variations for the same individuals, combine to produce highly variable patterns within a specific household. It is not our intent to capture family-to-family differences in behavior for this project, but simply the variability for a typical family. The randomness of occupant behavior can best be duplicated using software that uses a random number generator driven by realistic probability distributions and other high-level constraints established for the Benchmark.

Other drivers of event schedules are more predictable. The number of occupants is assumed to have a linear effect on total hot water use, as discussed in the previous section. This variable primarily affects frequency of events, assuming the typical behavior of each family member is about the same, including average event timing, duration, and flow rate. It can be argued that additional family members beyond the first two are likely to be children and may use less hot water, but data from the 1997 RECS [18] indicate that the relationship between average number of occupants and average hot water use is fairly linear (Fig. 3).

Climate and season also affect event schedules indirectly through mains temperature, as discussed earlier. The higher the mains temperature, the smaller the flow rate of hot water necessary to obtain the desired mixed temperature for end-uses such as showers, baths, and sinks. Our assumption is that most common clothes washers and dishwashers do not adjust the hot water flow rate or volume based on the cold water temperature, though we recognize that many advanced clothes washers control the mixed water temperature using a thermostatic control valve. Dishwashers typically rely on hot water only, which is raised to a higher temperature by an internal heater. Some references suggest there is seasonality to the frequency of hot water events, but that possible relationship was not addressed by this study.

Clothes washer and dishwasher event characteristics are strongly influenced by the efficiency of appliances present in

the house being analyzed. Most efficient appliances reduce energy consumption by reducing the amount of water necessary to wash the dishes or clothes, by either reducing the number of cycles or using less water for each cycle. Usually, this results in shorter event durations. Alternate control types and adaptive temperature/load size features can also affect the event characteristics in many different ways. Because our focus was on developing standard event schedules, and because of the unlimited possibilities for clothes washer and dishwasher events, we assumed typical appliance characteristics and left it to the analyst to make the necessary adjustments based on actual appliance features.



**Fig. 3 Relationship between number of occupants and energy use for major end-uses based on the 1997 RECS**

The effect of hot water setpoints above 120°F were not examined as part of this study because water supplied at such elevated temperatures poses a significant risk of scalding and is usually not recommended for residential systems. For solar storage tanks that supply hot water at temperatures up to 160°F, the volume and flow rate of hot water events in this study should be interpreted as hot water tempered to 120°F using either a tempering valve or a second storage tank.

Finally, a very important driver of event duration is the magnitude of hot water distribution losses. If the distribution system has long pipe runs, oversized pipe diameters, or large pipe losses upstream of a fixture, it is likely that the user will need to wait a significant length of time before hot water arrives at the fixture. In many cases this extends the duration of the hot water event, but not always. Appliance hot water use is typically unaffected by distribution losses, and many people will begin washing their hands before hot water arrives at the faucet. Another complication is that the event schedules themselves have a large effect on the distribution losses, making the analysis an iterative process. Because these interactions are very complex, we decided to postpone the inclusion of distribution losses in the development of event schedules until the next phase of this project.

### Software

The event schedules were generated using a software tool called DHWcalc developed by the solar energy research group at Kassel University in Germany [24]. The software can be downloaded at no charge from the University's website

(www.solar.uni-kassel.de). DHWcalc generates random event schedules based on hourly profiles, average event characteristics, average daily volumes, and other constraints entered by the user. Events have a fixed duration, which must be a multiple of the selected time step. Event flow rate, and consequently event volume, varies randomly around an average value ( $\mu_{fr}$ ) based on a standard deviation ( $\sigma_{fr}$ ) entered by the user. Of course in a real household, it is event duration that varies much more than flow rate, but it would be impossible to have highly variable durations without extremely small time steps. An hourly probability distribution is entered into the software using a step function. The probability distribution is tuned automatically by the software to account for user-specified variations in seasonal, weekend/weekday, and holiday event frequency.

### Assumptions and Inputs

Although 1-min time-steps are optimal for the purpose of specifying realistic event durations (Table 3), longer 6-min time steps with clustered sink events are actually more realistic than independent 1-minute events, because in many home situations (such as washing hands before dinner, rinsing dishes, getting ready for school/work) there is a tendency for a series of sink events to occur at about the same time (see Fig. 4). Either profile is possible depending on the behavior of the occupants, but based on our examination of data collected for approximately 1200 households by the American Water Works Association (AWWA) [25], clustered sink events appear to be more common (see Fig. 5). This conclusion is also supported by our recent monitoring activities in Building America houses. Fig. 6 shows the clustering of what we believe are sink events on a representative day in January for a Building America house near Denver, Colorado. In the end, 6-min time steps were chosen for this project because they offered the greatest overall realism.

**Table 3 DHW Event Characteristics in 1-Min Increments for a Three-Bedroom House**

	Clothes Washer	Dish-washer	Shower <sup>a</sup>	Bath <sup>a</sup>	Sink <sup>a</sup>
$V_{d,avg}$ in liters (gal)	57 (15)	19 (5)	106 (28)	26 (7)	95 (25)
$\mu_{fr}$ in l/hr (gal/min)	319 (1.4)	242 (1.1)	479 (2.1)	958 (4.2)	161 (0.7)
$\sigma_{fr}$ in l/hr (gal/min)	160 (0.7)	36 (0.2)	239 (1.1)	239 (1.1)	241 (1.1)
Duration (min)	10	8	8	5	1
Weekend/Weekday ratio	115%	115%	115%	300%	115%
Events/day	1.07	0.59	1.66	0.324	35.5
Events/year	392	215	606	118	12958

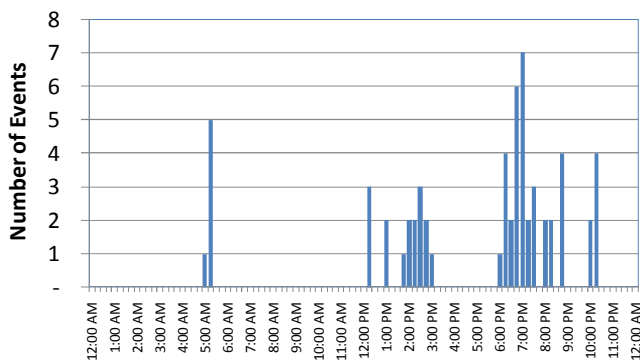
<sup>a</sup> Flow rates and volumes include both hot and cold water

Several adjustments to the 1-min event characteristics were necessary to make the other four end-uses compatible with 6-min time steps. The duration of showers (8-min) and baths (5-min) were changed to 6-min, while keeping the flow

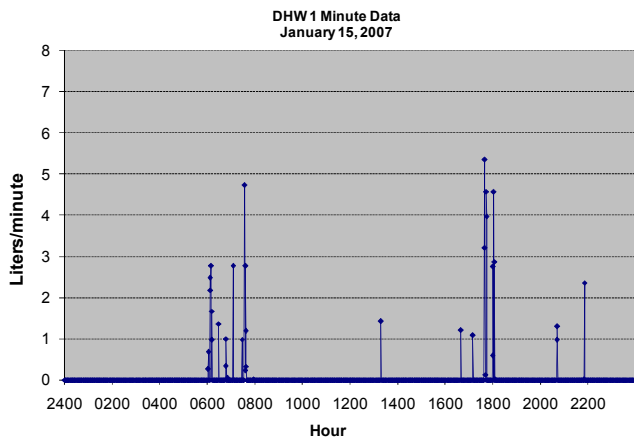
rate and average daily volume the same. As a result, event frequency was altered to some extent for the 6-min time-steps. Clothes washer event duration was changed from 10 min to 12 min, and dishwasher event duration was changed from 8 min to 6 min. Because the annual number of clothes washer and dishwasher events were defined in the Benchmark, we adjusted the flow rates to force the daily volumes to remain the same.



**Fig. 4 Comparison of 24 independent random 1-minute events to 4 randomly distributed 6-minute clusters**



**Fig. 5 Clustering of faucet events (hot and cold) in 15-minute intervals for a household with two occupants [25]**



**Fig. 6 Clustering of likely faucet events (hot water only) for a Building America house with three occupants**

The final event characteristics developed for Building America using 6-min time-steps are shown in Table 4. Note that for the purpose of DHWcalc analysis, sinks, baths, and shower events include both hot and cold water. The use of combined hot and cold water volume allows climate-dependent variations based on mains temperature to be ignored during the initial stages of analysis, avoiding the

necessity to run DHWcalc for many different locations. A spreadsheet was designed to automatically extract the hot water flow from the DHWcalc outputs based on a user-selected typical meteorological year (TMY2) site [26]. Seasonal variations in hot water use are also calculated automatically by the spreadsheet.

**Table 4 DHW Event Characteristics in 6-Min Increments for a Three-Bedroom House**

	Clothes Washer	Dish-washer	Shower <sup>b</sup>	Bath <sup>b</sup>	Sink <sup>b</sup>
$V_{d,avg}$ in liters (gallons)	57 (15)	19 (5)	106 (28)	26 (7)	95 (25)
$\mu_{fr}$ in l/hr (gal/min)	266 (1.2)	323 (1.4)	479 (2.1)	958 (4.2)	161 (0.7)
$\sigma_{fr}$ in l/hr (gal/min)	133 (0.6)	48 (0.2)	239 (1.1)	239 (1.1)	241 (1.1)
Duration (mins)	12	6	6	6	6
Weekend/Weekday ratio	115%	115%	115%	300%	115%
Events/day	1.07	0.59	2.21	0.27	5.9
Events/year	392	215	808	99	2160

<sup>b</sup> Flow rates and volumes include both hot and cold water

Average daily volume was constrained to match the Benchmark values shown in Table 2 for a three-bedroom house. For clothes washers and dishwashers, the hourly profiles were taken from the Benchmark, and the event frequencies were based on the corresponding DOE appliance rating procedures [27, 28]. Average clothes washer and dishwasher event durations were estimated by NREL based on engineering judgment and some limited appliance testing. Flow rates were then calculated based on event frequency, duration, and average daily volume. For showers, baths, and sinks, the hourly profiles and average event durations and flow rates were estimated based on the AWWA study [25]. Event frequencies were then calculated based on flow rate, duration, and daily volume. It should be noted that the AWWA data included all water events (hot, cold, and mixed), and individual end-use events were disaggregated statistically instead of being measured directly. As a result, the data from that study must be used with caution.

An assumption was made that a typical home is unoccupied 14 days each year (one week in June and one week in December), and that no events occur on those days. This number of unoccupied days (or holidays) was calculated based on the average percent of days with no toilet draws in the AWWA study. The ratio of average daily volume on weekends compared to weekdays was also based on the AWWA study. Only bath events were significantly more or less common on weekends, occurring approximately three times more often than on weekdays. Finally, standard deviation of event volume for each end-use was derived from

the water use data in the AWWA study and was intended to be representative of an average family. These values may be somewhat smaller than the standard deviation for hot water alone, because there is likely to be some variation in the end-use temperature superimposed on the variations in duration and flow rate that are reflected in the AWWA data.

## RESULTS

### Event Schedules

The final event schedules generated for two, three, and four-bedroom houses have been posted in spreadsheet format on the Building America performance analysis website ([www.eere.energy.gov/buildings/building\\_america/pa\\_resources.html](http://www.eere.energy.gov/buildings/building_america/pa_resources.html)). The nearest TMY2 site must be selected in the tab labeled “Inputs.” In most cases the combined event schedule is sufficient for the analysis of DHW systems, but individual end-use events are also provided in case the events must be associated with specific fixtures, as would be the case when hot water distribution losses are analyzed. The annual events are split into 12 months because the 2003 version of Microsoft Excel does not allow 87,000 rows. This limitation will be lifted in the 2007 release of Excel.

An example set of events for a three-bedroom house in Las Vegas is shown in Fig. 7. The graph covers the period of March 1-8. Clustering of events and variations in event volume were visible, as we would expect in an actual household.

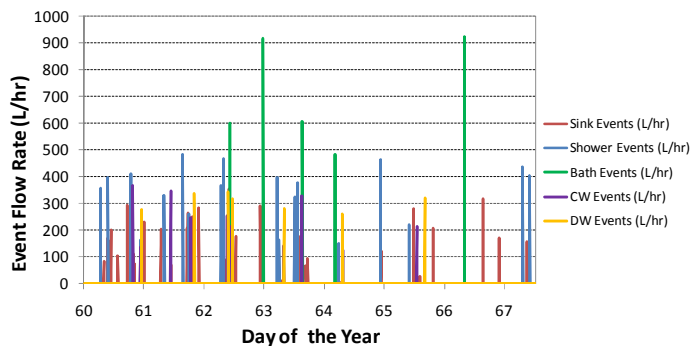


Fig. 7 Final event schedule for the time period March 1-8 for a three-bedroom house in Las Vegas

### Validation

Once the event schedules were generated, we compared the output event characteristics with the inputs entered into the DHWcalc software to make sure the results were consistent. Table 5 summarizes the validation of several important event characteristics for the five end-uses, including average flow rate ( $\mu_{fr}$ ), standard deviation of flow rate ( $\sigma_{fr}$ ), event frequency, and annual water use. Most parameters matched up very well except for  $\sigma_{fr}$ , which was smaller than we specified for all five end-uses. In other words, there was not as much event-to-event variability as we wanted. Another concern was that sink event characteristics were not consistent with the input parameters, except for the annual flow volume. We have contacted the creators of DHWcalc to find the cause of these discrepancies and to make corrections if warranted.

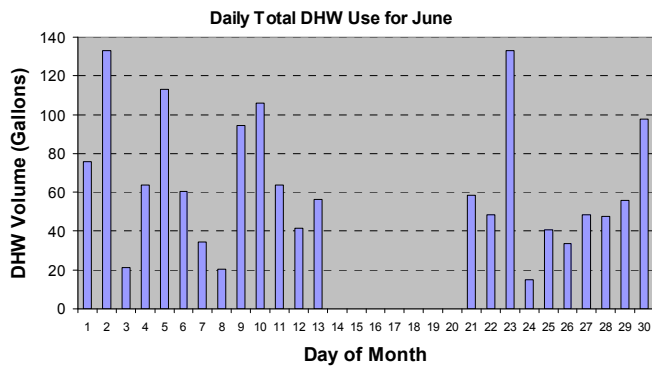
The day-to-day standard deviation in total hot water use is about 60% over the course of a year. An illustration of this daily variation for the month of June is shown in Fig. 8. This result is somewhat less than the standard deviation of 71% calculated based on the AWWA data for almost 1200 houses. However, because the AWWA data includes both hot and cold water use, it is unclear how this would translate to hot water alone. Our supposition is that the variability of hot water would be higher for the same reasons discussed earlier in the context of event volume. The AWWA data is also for only 4 weeks of the year, usually 2 weeks in summer and 2 weeks in winter. It seems likely that the variability for a whole year would be smaller than for 2 weeks at the extremes. Another data point is offered by four occupied Building America houses with direct monitoring of DHW usage. The average day-to-day standard deviation for these four houses was 60%, which happens to be the same as our event schedules. A third study [12] of twelve houses concluded that day-to-day standard deviation was 33% for weekdays and 40% for weekends, suggesting that daily volume is significantly less variable than the daily sum of event volumes for this project. Overall, we are comfortable that our day-to-day variability is reasonable compared to the average of other studies.

Table 5 Validation of key event schedule characteristics for a three-bedroom house

	Clothes Washer	Dish-washer	Shower <sup>a</sup>	Bath <sup>a</sup>	Sink <sup>a</sup>
Input $\mu_{fr}$ , 1/hr (gal/min)	266 (1.17)	323 (1.42)	479 (2.11)	958 (4.22)	161 (0.71)
Output $\mu_{fr}$ , 1/hr (gal/min)	268 (1.18)	324 (1.43)	484 (2.13)	974 (4.29)	212 (0.93)
Input $\sigma_{fr}$ , 1/hr (gal/min)	133 (0.59)	48 (0.21)	239 (1.05)	239 (1.05)	241 (1.06)
Output $\sigma_{fr}$ , 1/hr (gal/min)	76 (0.33)	35 (0.15)	143 (0.63)	175 (0.77)	125 (0.55)
Input events/yr	392	215	799	99	2160
Output events/yr	388	215	808	98	1637
Input annual volume, liters (gal)	20,805 (5,496)	6935 (1,832)	38,690 (10,220)	9490 (2,507)	34,675 (9,160)
Output annual volume, liters (gal)	20,808 (5,497)	6959 (1,838)	38,692 (10,221)	9550 (2,523)	34,675 (9,160)

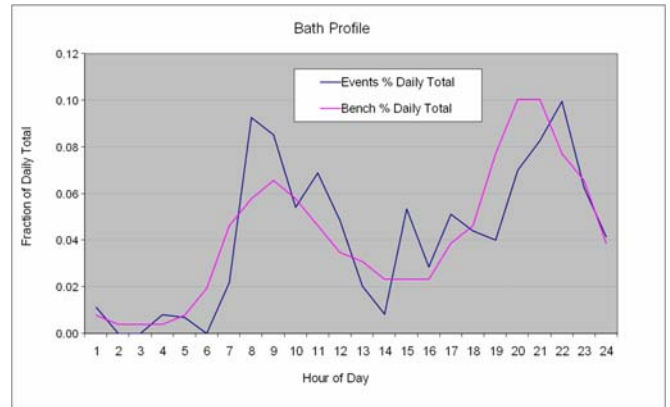
<sup>a</sup> Flow rates and volumes include both hot and cold water



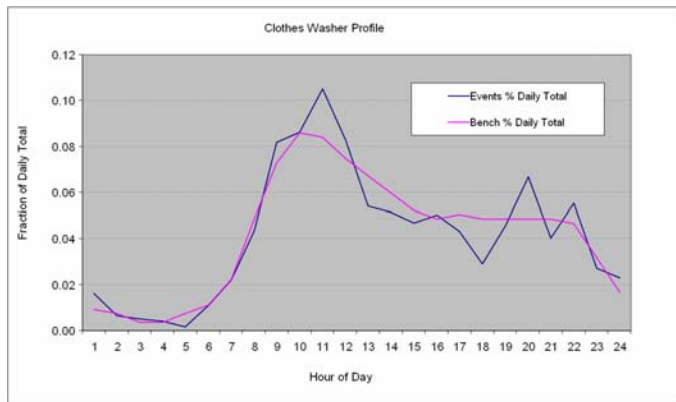


**Fig. 8 Daily DHW volume for June**

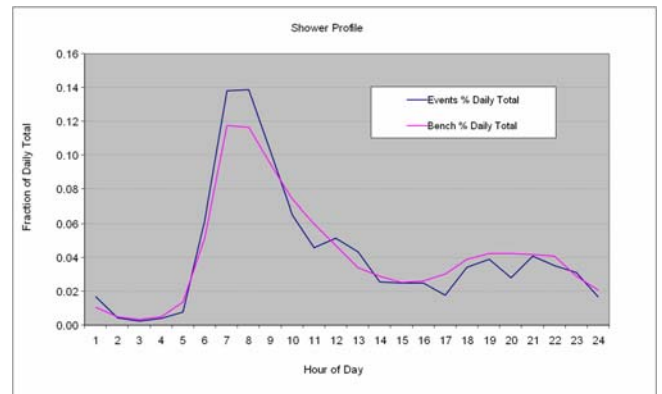
The normalized hourly profiles for the five DHW end-uses are shown in Figs. 9 through 13. Most end-uses have a large enough number of events over the course of a year that the profiles tend to match the Benchmark hourly profiles very closely, even when the  $\sigma_{fr}$  is large, with relatively small differences due to random effects. End-uses with fewer events and large  $\sigma_{fr}$  (such as baths) do not align quite as well with the Benchmark profiles, but the correlation appears to be reasonable for our purpose.



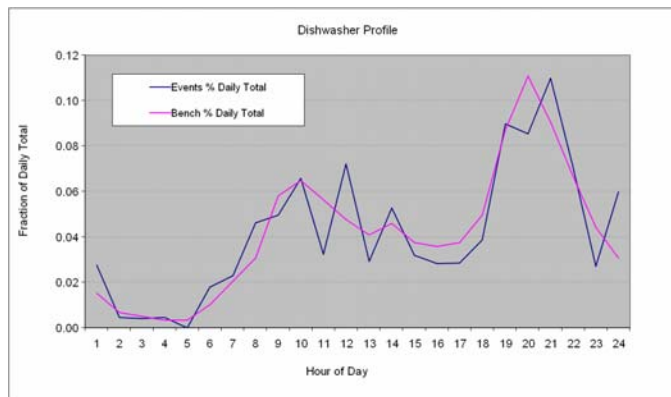
**Fig. 11 Average DHW hourly profile for bath events compared to Benchmark**



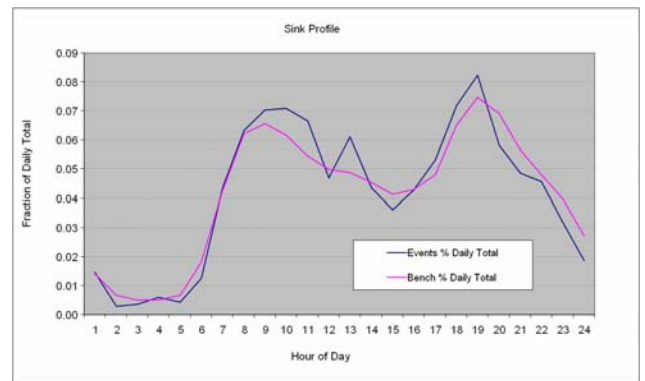
**Fig. 9 Average DHW hourly profile for clothes washer events compared to Benchmark**



**Fig. 12 Average DHW hourly profile for shower events compared to Benchmark**



**Fig. 10 Average DHW hourly profile for dishwasher events compared to Benchmark**



**Fig. 13 Average DHW hourly profile for sink events compared to Benchmark**

**Limitations**

While the approach described in this paper has helped to standardize the analysis of hot water systems in advanced residential buildings, there are some limitations to its application.

- The use of 6-min time-steps limits the usefulness of the event schedules for accurate predictions of distribution losses because unclustered sink events of

1-min or less are common, and can have a significant influence on the heat losses from distribution pipes.

- For distribution systems other than the standard trunk-and-branch system assumed for the Benchmark, realistic events may be quite different depending on the magnitude of distribution losses, the presence of a recirculation loop, and the volume of stagnant water between individual fixtures and the nearest reservoir of hot water. Decreases in water usage but increases in energy usage are expected from the use of recirculation systems.
- ENERGY STAR or other non-standard appliances may consume a very different amount of hot water for washing dishes or clothes, depending on their efficiencies and control strategies.
- Day-to-day variations were designed to be consistent with a typical family and were not intended to represent differences among specific households.
- We did not address conditional probability effects, such as the fact that once some number of bath or shower events occur (e.g., four showers for a house with four people), the likelihood of more drops off. Clothes washer events would be the opposite, because they tend to be clustered in real households. Once a clothes washer event occurs, the likelihood is higher that another will follow. The model treats the event probabilities at each time step as independent of the periods before and after, which is not completely realistic.

Because it is impossible to envision all the scenarios for advanced systems, analysts must make appropriate adjustments to the event schedules based on engineering judgment. NREL is currently developing techniques to make this process more convenient and consistent.

## CONCLUSIONS

NREL has developed a series of event schedules in 6-min time steps for the five major residential hot water end-uses (sinks, showers, baths, clothes washer, and dishwasher). These event schedules were designed for use in conjunction with the Building America Benchmark, and offer the opportunity for significant improvements in the consistency and accuracy of energy analysis for certain advanced residential hot water systems, including recirculation loops, tankless water heaters, and solar hot water systems with demand-side heat exchangers.

## ACKNOWLEDGMENTS

The authors express our appreciation to Ren Anderson, Craig Christensen, Dennis Barley, Ali Jalalzadeh, and Mark Eastment of NREL, along with Ed Hancock of the Mountain Energy Partnership for providing very constructive insights throughout the process of developing these event schedules. We also want to thank Ed Pollock and George James of DOE for the leadership and resources necessary to perform this work.

## REFERENCES

- [1] R. Hendron, 2006, "Building America Research Benchmark Definition, Updated December 15, 2006," NREL/TP-550-40968, Golden, CO: National Renewable Energy Laboratory.
- [2] R. Pratt, C. Conner, E. Richman, K. Ritland, W. Sandusky, and M. Taylor, 1989, "Description of Electric Energy Use in Single-Family Residences in the Pacific Northwest – End-Use Load and Consumer Assessment Program (ELCAP)," DOE/BP-13795-21, Richland, WA: Pacific Northwest National Laboratory.
- [3] A. Lowenstein, and C. Hiller, 1996, "Disaggregating Residential Hot Water Use," ASHRAE Transaction Symposia, January 1996, Atlanta, GA: ASHRAE.
- [4] American Society of Heating, Refrigerating, and Air-Conditioning Engineers (ASHRAE), 2003, HVAC Applications Handbook, Chapter 49, Atlanta, GA: ASHRAE.
- [5] J.H. Davidson, S.C. Mantell, F.A. Kulacki, W. Liu, and Wu, C., 2002, "Mechanical and Thermal Performance of Polymer Heat Exchangers for Solar Hot Water," Heat Transfer 2002, Proceedings of the 12th International Heat Transfer Conference, pp. 357-362.
- [6] Gary Klein, 2004, "Hot Water Distribution Systems: Part 2," *Plumbing Systems and Design*, May/June 2004.
- [7] D. Abrams, and C. Hiller, 2000, "WATSMPL 2.0 User's Manual: Simplified Energy and Operating Cost Analysis of Storage Water Heaters," Palo Alto, CA: EPRI, (The WATSMPL 2.0 program is presently available from C. Hiller, Applied Energy Technologies, Palo Alto, CA, U.S.A.)
- [8] U.S. Department of Energy (DOE), 1998, "Code of Federal Regulations Title 10, Energy, Part 430 Subpart B, Appendix E — Uniform Test Method for Measuring the Energy Consumption of Water Heaters," Washington, D.C.: U.S. Department of Energy.
- [9] Solar Rating and Certification Corporation (SRCC), 2002, "SRCC Document OG-300: Operating guidelines and Minimum Standards for Certifying Solar Water Heating Systems," ([www.solar-rating.org/standards/ogdocuments/OG300SEF02.pdf](http://www.solar-rating.org/standards/ogdocuments/OG300SEF02.pdf)) Cocoa, FL: Solar Rating and Certification Corporation.
- [10] P. Fairey, and D. Parker, 2004, "A Review of Hot Water Draw Profiles Used in Performance Analysis of Residential Domestic Hot Water Systems," FSEC-RR-56-04, Cocoa, FL: Florida Solar Energy Center.
- [11] C. Christensen, G. Barker, J. Thornton, 2000, "Parametric Study of Thermal Performance of Integral Collector-Storage Solar Water Heaters," Campbell-Howe, R., ed. Proceedings of the Solar 2000 Conference including Proceedings of ASES Annual Conference and Proceedings of the 25th National Passive Solar Conference, 16-21 June 2000, Madison, Wisconsin. Boulder, CO: American Solar Energy Society; Washington, DC: American Institute of Architects Committee on the Environment 6 pp.; NREL Report No. CP-550-28043.
- [12] J. Burch, and J. Salasovich, 2002, "Flow Rates and Draw Variability in Solar Domestic Hot Water Usage,"

- Proceedings of the Solar 2002 Conference Including Proceedings of the 31st ASES Annual Conference and Proceedings of the 27th National Passive Solar Conference, 15-20 June 2002, Reno, Nevada. Boulder, CO: American Solar Energy Society, Inc. (ASES); pp. 287-292; NREL Report No. CP-550-31779.
- [13] Davis Energy Group, 2005, HWSim Release Beta 0.202, Davis, CA: Davis Energy Group.
- [14] C.C. Hiller, A.I. Lowenstein, R.L. Merriam. 1994. "Detailed Water Heater Model", ASHRAE Transactions: Symposia, 1994, pp. 948-955. Atlanta, GA: American Society of Heating, Refrigerating and Air Conditioning Engineers.
- [15] C.C. Hiller, 1998, "New Hot Water Consumption Analysis and Water-Heating System Sizing Methodology," Proc. ASHRAE Transactions, 1998, p 1864-1877. Atlanta, GA: American Society of Heating, Refrigerating and Air Conditioning Engineers.
- [16] U.S. Department of Energy, 2001, Residential Energy Consumption Survey, Washington, D.C.: U.S. Department of Energy.
- [17] J. Lutz, G. Klein, D. Springer, and B. Howard, 2002, "Residential Hot Water Distribution Systems: Roundtable Session," presented at 2002 ACEEE Summer Study on Energy Efficiency in Buildings. Asilomar, CA: ACEEE.
- [18] U.S. Department of Energy. 2001. Electronic RECS 1999, Beta Version 3.1, based on the 1997 RECS. Washington, D.C.: U.S. Department of Energy.
- [19] M. Pinckard, R. Brown, J. Lutz, E. Mills, M. Moezzi, and C. Atkinson. 2003. Documentation of Calculation Methodology and Input Data for the Home Energy Saver Web Site. Berkeley, CA: Lawrence Berkeley National Laboratory.
- [20] J. Holton, 2002, "Base Loads (Lighting, Appliances, DHW) and the High Performance House)," ASHRAE Transactions.
- [21] T. Wenzel, J. Kooney, G. Rosenquist, M. Sanchez, and J. Hanford, 1997, Energy Data Sourcebook for the U.S. Residential Sector, LBL-40297, Berkeley, CA: Lawrence Berkeley National Laboratory.
- [22] California Energy Commission (CEC), 2002, "2005 California Building Energy Efficiency Standards: Measure Analysis and Life-Cycle Cost, Part I," P400-02-011, Sacramento, CA: California Energy Commission.
- [23] B.R. Becker, and K.E. Stogsdill, 1990, "Development of Hot Water Use Data Base," ASHRAE Transactions, Vol. 96, Part 2, pp. 422-427, Atlanta, GA: American Society of Heating, Refrigerating and Air Conditioning Engineers.
- [24] U. Jordan, and K. Vajen, 2001, "Realistic Domestic Hot-Water Profiles in Different Time Scales," Marburg, Germany: Universität Marburg.
- [25] P. Mayer, and W. DeOreo, 1999, "Residential End Uses of Water," Prepared for the American Water Works Association (AWWA), Boulder, CO: Aquacraft, Inc.
- [26] National Renewable Energy Laboratory (NREL), 1995, "User's Manual for TMY2s," <http://rredc.nrel.gov/solar/pubs/tmy2/>, Golden, CO: National Renewable Energy Laboratory.
- [27] U.S. Department of Energy, 1999, "Energy Conservation Program for Consumer Products: Test Procedure for Dishwashers," Code of Federal Regulations Title 10, Energy, Part 430, Subpart B, Washington, D.C.: U.S. Department of Energy.
- [28] U.S. Department of Energy, 1999, Energy Conservation Program for Consumer Products: Test Procedure for Clothes Washers. Code of Federal Regulations Title 10, Energy, Part 430, Subpart B, Washington, D.C.: U.S. Department of Energy.

# REPORT DOCUMENTATION PAGE

*Form Approved*  
OMB No. 0704-0188

The public reporting burden for this collection of information is estimated to average 1 hour per response, including the time for reviewing instructions, searching existing data sources, gathering and maintaining the data needed, and completing and reviewing the collection of information. Send comments regarding this burden estimate or any other aspect of this collection of information, including suggestions for reducing the burden, to Department of Defense, Executive Services and Communications Directorate (0704-0188). Respondents should be aware that notwithstanding any other provision of law, no person shall be subject to any penalty for failing to comply with a collection of information if it does not display a currently valid OMB control number.

**PLEASE DO NOT RETURN YOUR FORM TO THE ABOVE ORGANIZATION.**

<b>1. REPORT DATE (DD-MM-YYYY)</b> August 2008		<b>2. REPORT TYPE</b> Conference Paper		<b>3. DATES COVERED (From - To)</b>	
<b>4. TITLE AND SUBTITLE</b> Development of Standardized Domestic Hot Water Event Schedules for Residential Buildings			<b>5a. CONTRACT NUMBER</b> DE-AC36-99-GO10337		
			<b>5b. GRANT NUMBER</b>		
			<b>5c. PROGRAM ELEMENT NUMBER</b>		
<b>6. AUTHOR(S)</b> R. Hendron and J. Burch			<b>5d. PROJECT NUMBER</b> NREL/CP-550-40874		
			<b>5e. TASK NUMBER</b> BET88004		
			<b>5f. WORK UNIT NUMBER</b>		
<b>7. PERFORMING ORGANIZATION NAME(S) AND ADDRESS(ES)</b> National Renewable Energy Laboratory 1617 Cole Blvd. Golden, CO 80401-3393				<b>8. PERFORMING ORGANIZATION REPORT NUMBER</b> NREL/CP-550-40874	
<b>9. SPONSORING/MONITORING AGENCY NAME(S) AND ADDRESS(ES)</b>				<b>10. SPONSOR/MONITOR'S ACRONYM(S)</b> NREL	
				<b>11. SPONSORING/MONITORING AGENCY REPORT NUMBER</b>	
<b>12. DISTRIBUTION AVAILABILITY STATEMENT</b> National Technical Information Service U.S. Department of Commerce 5285 Port Royal Road Springfield, VA 22161					
<b>13. SUPPLEMENTARY NOTES</b>					
<b>14. ABSTRACT (Maximum 200 Words)</b> The Building America Research Benchmark is a standard house definition created as a point of reference for tracking progress toward multi-year energy savings targets. As part of its development, the National Renewable Energy Laboratory has established a set of domestic hot water events to be used in conjunction with sub-hourly analysis of advanced hot water systems.					
<b>15. SUBJECT TERMS</b> domestic hot water; zero energy home; building america					
<b>16. SECURITY CLASSIFICATION OF:</b>			<b>17. LIMITATION OF ABSTRACT</b> UL	<b>18. NUMBER OF PAGES</b>	<b>19a. NAME OF RESPONSIBLE PERSON</b>
<b>a. REPORT</b> Unclassified	<b>b. ABSTRACT</b> Unclassified	<b>c. THIS PAGE</b> Unclassified			<b>19b. TELEPHONE NUMBER (Include area code)</b>

Standard Form 298 (Rev. 8/98)  
Prescribed by ANSI Std. Z39.18