

*A simplified approach to analyze and model
inductive voltage adder*

W. Zhang, W. Eng, C. Pai, J. Sandberg, Y. Tan, Y. Tian

Presented at the 22nd Particle Accelerator Conference (PAC)
Albuquerque, New Mexico
June 25 – 29, 2007

Collider-Accelerator Department

Brookhaven National Laboratory

P.O. Box 5000
Upton, NY 11973-5000
www.bnl.gov

Notice: This manuscript has been authored by employees of Brookhaven Science Associates, LLC under Contract No. DE-AC02-98CH10886 with the U.S. Department of Energy. The publisher by accepting the manuscript for publication acknowledges that the United States Government retains a non-exclusive, paid-up, irrevocable, world-wide license to publish or reproduce the published form of this manuscript, or allow others to do so, for United States Government purposes.

This preprint is intended for publication in a journal or proceedings. Since changes may be made before publication, it may not be cited or reproduced without the author's permission.

DISCLAIMER

This report was prepared as an account of work sponsored by an agency of the United States Government. Neither the United States Government nor any agency thereof, nor any of their employees, nor any of their contractors, subcontractors, or their employees, makes any warranty, express or implied, or assumes any legal liability or responsibility for the accuracy, completeness, or any third party's use or the results of such use of any information, apparatus, product, or process disclosed, or represents that its use would not infringe privately owned rights. Reference herein to any specific commercial product, process, or service by trade name, trademark, manufacturer, or otherwise, does not necessarily constitute or imply its endorsement, recommendation, or favoring by the United States Government or any agency thereof or its contractors or subcontractors. The views and opinions of authors expressed herein do not necessarily state or reflect those of the United States Government or any agency thereof.

A SIMPLIFIED APPROACH TO ANALYZE AND MODEL INDUCTIVE VOLTAGE ADDER *

W. Zhang, W. Eng, C. Pai, J. Sandberg, Y. Tan, Y. Tian, BNL, Upton, NY 11973, U.S.A.

Abstract

We have recently developed a simplified model and a set of simple formulas for inductive voltage adder design. This model reveals the relationship of output waveform parameters and hardware designs. A computer simulation has demonstrated that parameter estimation based on this approach is accurate as compared to an actual circuit. This approach can be used in early stages of project development to assist feasibility study, geometry selection in engineering design, and parameter selection of critical components. In this paper, we give the deduction of a simplified model. Among the estimation formulas we present are those for pulse rise time, system impedance, and number of stages. Examples are used to illustrate the advantage of this approach. This approach is also applicable to induction LINAC design.

INTRODUCTION

In our earlier papers [1] and [2], we presented an inductive voltage adder (IVA) transmission network model based on circuit element simplification approach and a set of estimation formulas derived from the model. It was the first step to reveal IVA mechanism. They are intended for industrial applications.

We introduce here an expanded model and a more formal approach of IVA analysis.

SIMPLIFICATION

A single cell circuit model of inductive voltage adder was given in [3] and [4]. However, this single cell model is unsymmetrical. We change this model to a symmetrical one as in Figure 1. Where, SW is the main switch, C_S is the capacitance of energy storage capacitor, R is the parallel resistor, L_K is core leakage inductance, L_P is primary core inductance, and L_1 and C_1 are the distributed inductance and capacitance of stalk per stack section length.

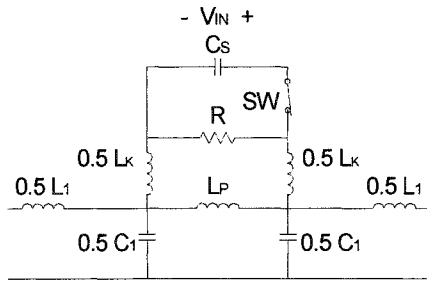


Figure 1: A symmetrical style single stack model

Its corresponding simplified model derived in [2] is given in Figure 2.

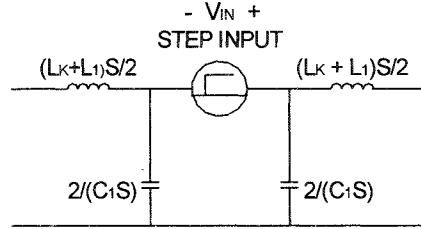


Figure 2: A symmetrical style simplified single stack model of inductive voltage adder with step input

NETWORK ANALYSIS AND DESIGN FORMULAS

The multi-stack inductive voltage adder model derived from single cell model is a ladder network of multiple "step input" sources.

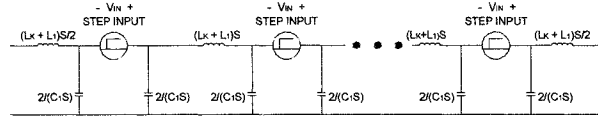


Figure 3: A symmetrical style simplified multi-stack model of inductive voltage adder with step input

Since the ideal step voltage source shall have zero impedance, the network transmission impedance of inductive voltage adder is then given by

$$Z = \sqrt{\frac{L_K + L_1}{C_1}} \quad (1)$$

This result shows that the circuit output impedance is larger than the stalk impedance due to the contribution of the leakage inductance. In order to minimize pulse reflections, the output cable and load shall match to the circuit output impedance Z rather than the stalk impedance.

The transmission delay time per stack cell is simply the propagation time of each transmission line section. It is given by

$$T_C = \sqrt{(L_1 + L_K)C_1} \quad (2)$$

Each stack cell has a natural resonant frequency of

$$\omega_0 = \frac{1}{\sqrt{(L_1 + L_K)C_1}} \quad (3)$$

*Work performed under auspices of U.S. Dept. of Energy.
#arling@bnl.gov

Commonly used configuration of inductive voltage adder is shown in Figure 4



Figure 4: Common configuration of multi-stack inductive voltage adder

It is called a single-ended IVA, if one of the load, ZL or ZR, is a short and the other one is matched to IVA transmission impedance Z. It is called a double-ended IVA, if both loads are identical and equal and matched to IVA transmission impedance Z.

Assuming all step input here has a voltage V_{IN} as in previous section, and ZL is a short and ZR equals to Z. The load voltage of single-ended matched IVA can be expressed as

$$V_{load} = NV_{IN} \quad (4)$$

Where V_{load} denotes output voltage across load ZR and N is number of stacks. Its response voltage or current rise time, T_R , of single-ended matched IVA can be expressed as

$$T_R = 2N\sqrt{(L_K + L_1)C_1} \quad (5)$$

Similarly, the load voltage of either end, V_{Dload} , of double-ended matched IVA can be expressed as

$$V_{Dload} = \pm \frac{NV_{IN}}{2} \quad (6)$$

Where, V_{Dload} is positive for ZR and negative for ZL. The load voltage or current rise time, T_{DR} , of a double-ended matched IVA can be expressed as

$$T_{RD} = N\sqrt{(L_K + L_1)C_1} \quad (7)$$

Here C_1 and L_1 are stalk capacitance and inductance, and L_K is leakage inductance. They serve as transmission line elements during pulse propagation.

It is interesting to note distinctive differences of inductive-voltage-adder (IVA) and pulse-forming-network (PFN).

- The output voltage of IVA is linearly dependent of number of stack cells, but output voltage of PFN is independent of number of cells.
- The pulse rise time of IVA is linearly dependent of number of stack cells, but pulse rise time of PFN is independent of number of cells.
- The pulse length of IVA is independent of number of stack cells, but PFN pulse length is dependent of number of cells.

APPLICATION EXAMPLES

To demonstrate design application, we show a few simulation examples. Simulation parameters are from an actual circuit given in [3]. All switches are assumed to be ideal and identical.

TABLE 1 SIMULATION PARAMETERS

Symbol	Parameter	Quantity
C_S	storage capacitance	24×10^{-6} F
L_P	primary inductance	20.9×10^{-6} H
L_K	leakage inductance	6.5×10^{-9} H
L_l	stalk inductance per stake	20×10^{-9} H
C_l	stalk capacitance	2.6×10^{-12} F
N	number of stakes	30, 20, 10
V_0	initial voltage of C_S	1000 V
R	parallel resistance	50
Z_{STALK}	stalk impedance	50

From the above parameters, we can calculate the load impedance as

$$Z = \sqrt{\frac{L_K + L_l}{C_l}} = \sqrt{\frac{(6.5 + 20) \times 10^{-9}}{2.6 \times 10^{-12}}} = 100.96 \Omega \quad (8)$$

Here, the calculated load impedance is about twice of the stalk impedance.

Assuming a single-ended 30 stack IVA where ZL is a short, the voltage pulse rise time across ZR can be estimated by using equation (5).

$$T_R = 2 \times 30 \sqrt{(20 + 6.5) \times 2.6 \times 10^{-21}} = 15.75 \text{ ns} \quad (9)$$

Using equation (6), we have the estimated output load voltage of the single-ended IVA

$$V_{load} = 30 \times 1000 \text{ V} = 30 \text{ kV} \quad (10)$$

The simulation result is in Figure 5. A comparison of matched and mismatched impedance cases are shown in Figure 6, which illustrate effects on pulse waveforms.

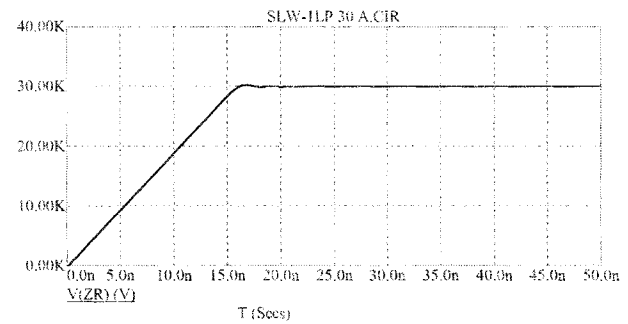


Figure 5: The output pulse waveform of a 30-stack single-ended IVA

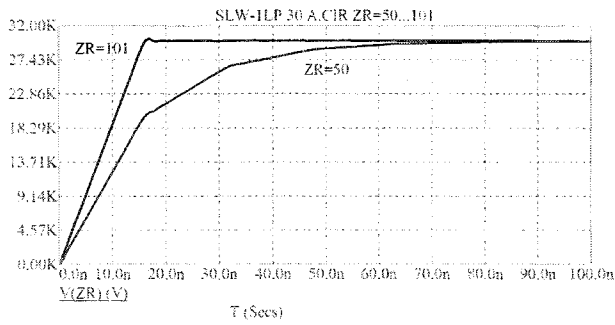


Figure 6: Output pulse waveforms of a 30-stack single-ended IVA with matched or mismatched impedance

Here we shown a set of simulation examples of double-ended IVA of 10, 20, or 30 stacks with switch on at 0.1 ns and off at 40 ns. The estimated parameters shown in Table 2 are calculated using equations given in the previous section. Simulation results and estimated parameters are well agreed.

TABLE 2 ESTIMATED DESIGN PARAMETERS

Symbol	Parameter	Quantity		
N	Number of stacks	10	20	30
T_{RD}	Pulse rise time			ns
V_{Dload}	Pulse voltage			kV

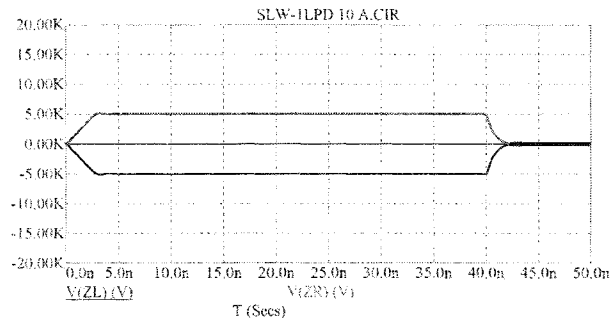


Figure 7: Output pulse waveforms of a 10-stack double-ended IVA

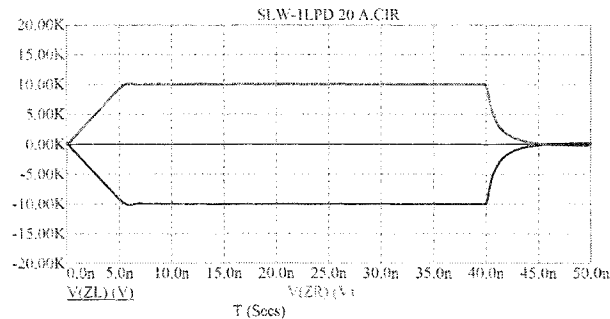


Figure 8: Output pulse waveforms of a 20-stack double-ended IVA

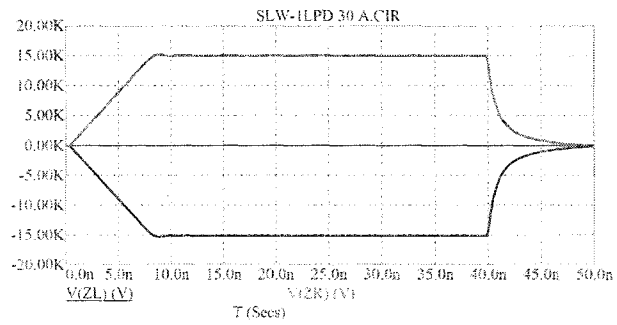


Figure 9: Output pulse waveforms of a 30-stack double-ended IVA

REFERENCES

- [1] W. Zhang, W. Eng, C. Pai, J. Sandberg, Y. Tan, Y. Tian, "A Simplified Model for Parameter Estimation and Circuit Analysis of Inductive-Adder Modulator", Accepted, to appear on Trans. Dielectr. Electr. Insul. August 2007.
- [2] W. Zhang, W. Eng, C. Pai, J. Sandberg, Y. Tan, Y. Tian, "A Simplified Model for Parameter Estimation and Circuit Analysis of Inductive-Adder Modulator", Proceedings of IEEE International Power Modulator Conference 2006, May 14-18, 2006, Washington D.C., USA, pp. 338-341.
- [3] Wang, G. J. Caporaso, E. G. Cook, "Modeling of an Inductive Adder Kicker Pulser for DARHT-II", Proceedings of the 20th International LINAC Conference, pp. 509-511, 2000.
- [4] Wang, G. J. Caporaso, E. G. Cook, "Modeling of an Inductive Adder Kicker Pulser for a Proton Radiography System", Digest of Technical Papers, Pulsed Power Plasma Science, 2001. PPS-2001. vol. 2, pp. 1579-1582, 17-22 June 2001.
- [5] W. Zhang, W. Eng, C. Pai, J. Sandberg, Y. Tan, Y. Tian, "Inductive Voltage Adder Network Analysis and Model Simplification", 2007 IEEE Pulsed Power and Plasma Science Conference, Albuquerque, NM, June 17-22, 2007.
- [6] Y. Kotlyar, W. Eng, C. Pai, J. Sandberg, J. Tuozzolo, W. Zhang, "Principle design of 300 KHZ MECO RF kicker bipolar solid state modulator", Conference Record of the Twenty-Sixth International Power Modulator Symposium and 2004 High-Voltage Workshop, pp. 250 - 253, 2004.