

HIGHLY COMPACT ACCELERATOR-DRIVEN SUBCRITICAL ASSEMBLY FOR MEDICAL AND INDUSTRIAL APPLICATIONS

Award Number: DE-FC07-03ID14502

Final Summary Report

July 31, 2006

University of California
Department of Nuclear Engineering
Berkeley, CA 94720
Congressional District 9

Jasmina Vujic (PI)
(510) 643-9884
vujic@nuc.berkeley.edu

William Kastenberg (Co-PI)
(510) 643-0574
kastenbe@nuc.berkeley.edu

Ehud Greenspan (Co-PI)
(510) 643-9983
gehud@nuc.berkeley.edu

Ka-Ngo Leung (Co-PI)
(510) 486-7918
knleung@lbl.gov

TABLE OF CONTENTS

EXECUTIVE SUMMARY.....	1
1. INTRODUCTION.....	4
2. COMPACT NEUTRON SOURCE	6
3. METHODOLOGY.....	9
4. REFERENCE SYSTEM.....	11
5. SCM OPTIMIZATION STUDIES	16
5.1 Cylindrical Sub-Critical Neutron Multiplier (SCM) optimization	16
5.2 Improvement of the SCM reflector.....	20
5.3 Increasing the source effectiveness.....	23
5.4 Further reflector thickening	25
5.5 Summary of SCM optimization for keff of 0.992.....	28
5.6 Reduction of keff from 0.992 to 0.98	29
6. BSA OPTIMIZATION STUDIES.....	31
6.1 Case One: Reference design.....	32
6.2 Case Two: SWAN-optimized BSA.....	33
6.3 Case three: 1% ⁶ LiF added to the last 2 zones	37
6.4 Case Four: SWAN BSA for D-T 14 MeV neutrons	39
6.5 Case Five: Like Case 2 using Fluental in the last two zones	42
6.6 Case Six: Concentrating Pb in the last region	45
6.7 Case Seven: Lead is eliminated from the last three layers	48
6.8 Case Eight: Fluental added to the last part of the BSA	51
6.9 Case Nine: Like Case One with Pb layer added at the exit of the BSA	53
6.10 Case Ten: Like Case 9 but with a Pb collar added	57
6.11 Case Eleven: Like Case Eight with a lead “collar”	59

6.12	Case Twelve: Like Case One but 6LiF extended up to the SCM	62
6.13	Case Thirteen: BeO instead of lead reflector for the BSA	64
6.14	Case Fourteen: BeO instead of Alumina reflector for the BSA; Part II	67
6.15	Case Fifteen: No lead in the BSA	69
6.16	Case Sixteen: As Case Fifteen but using alumina reflector	71
6.17	Summary	73
7.	DISCUSSION	80
8.	CONCLUSIONS	81
	REFERENCES	83
	APPENDIX A – Reflector Materials	85

EXECUTIVE SUMMARY

A novel, highly compact, fusion neutron source (CNS) based on a coaxial electrostatic accelerator is under development at the Lawrence Berkeley National Laboratory. This source is designed to generate up to $\sim 10^{12}$ D-D n/s. This source intensity is an order of magnitude too small for Boron Neutron Capture Therapy (BNCT) applications. The objective of this project is to assess the feasibility of using a small, safe and inexpensive subcritical fission assembly to multiply the fusion neutrons by a factor of ≥ 30 . The overall design objective is to get a treatment time for deep seated brain tumors that does not significantly increase beyond one hour when the effective multiplication factor of the SCM is $k_{\text{eff}} = 0.98$.

There are two major parts to this study: the optimization of the Sub-Critical Multiplier (SCM) and the optimization of the Beam Shaping Assembly (BSA), including the reflector for both sub-systems. The SCM optimization objective is to maximize the current of neutrons that leak out from the SCM in the direction of the patient, without exceeding the maximum permissible k_{eff} . Minimizing the required uranium inventory is another objective. SCM design variables considered include the uranium enrichment level in the range not exceeding 20% ^{235}U (for proliferation concerns), SCM geometry and dimensions, fuel thickness and moderator thickness.

The objective of the BSA optimization is to maximize the tumor dose rate using the optimal SCM while maintaining a tumor-to-normal tissue dose ratio of at least 20 to 12.5 (corresponding to the tumor control dose and to the healthy tissue dose limit). The BSA design variables include its shape, dimensions and composition. The reflector optimization is, in fact, an integral part of the SCM optimization and of the BSA optimization. The reflector design variables are composition and thickness.

The study concludes that it is not quite feasible to achieve the project objective. Nevertheless, it appears feasible to develop a practical BNCT facility based on the optimal system identified in this study by either

- Irradiating the patient in 3 to 4 one-hour sessions
- Irradiating the patient using 3 or 4 beams simultaneously
- Enhancing the capacity of the CNS to $\sim 5 \times 10^{12}$ D-D n/s

- Increasing the permissible SCM maximum k_{eff} to 0.995.

The optimal design of a SCM is made of 20% enriched uranium metal arranged as follows: two cylindrical fuel shells surrounds the CNS coaxially and four circular fuel elements are locate in-between the CNS and the BSA. The coaxial cylinders are 21 cm long – as is the CNS, and 0.06 cm thick and are clad with 0.05 cm thick aluminum on both sides. Water fills the 0.84 cm gap between them. The innermost cylinder has a radius of 13.5 cm. The disc-shaped fuel plates are, similarly, 0.06 cm thick, clad with 0.05 cm thick aluminum and have 0.84 cm thick water gaps in-between. The entire SCM is encased in aluminum structure that provides a physical barrier between the CSN and the SCM. A 0.84 cm thick water layer separates the outermost fuel element and the encasement. The total amount of enriched uranium in the SCM is 8.5 kg and its cost (not including fabrication) is estimated to be less than \$60,000. The SCM power level is estimated at 400 W when driven by a 10^{12} D-D n/s neutron source. This translates into consumption of only about 0.5% of the initially loaded ^{235}U atoms during 50 years of continuous operation. It implies that the SCM could operate continuously for the entire lifetime of the machine without refueling. Cooling the SCM does not pose a challenge; it may be accomplished passively; i.e., without resorting to forced circulation. For comparison, the power required for generating 10^{12} D-D neutron per second is approximately 400 KW.

Two optimal BSA designs were identified; one for maximizing the dose rate to a deep seated tumor and the other for maximizing the total dose that can be delivered to a deep seated tumor. The former offers the minimum treatment time whereas the latter offers a larger lethality range. The former features a harder neutron spectrum and relatively high neutron dose component to the skin while in the latter the neutron, gamma-ray and boron dose components in the skin are comparable. The maximum dose rate that can be delivered by the former is 10.1 Gy/hour and the maximum dose that can be delivered by the latter is 51.8 Gy.

The BSA design that maximizes the dose rate is 51.1 cm long, with a truncated conical shape with the large base towards the SCM and the small base towards the patient. The angle of the cone is 14.9 degrees, the large base towards the SCM has a radius of 23.3 cm while the small base towards the patient has a radius of 9.74 cm. The BSA is made of the following segments,

starting from the SCM with the thickness indicated in cm: 3.5 cm lead, 6 cm ^7LiF , 1.5 cm lead, 17 cm ^7LiF , 4 cm fluental, 1 cm lead, 8 cm fluental, 1 cm lead, 8 cm fluental, 0.9 cm lead and 0.1 cm ^6LiF . The cone is surrounded on the side by a 1 mm thick ^6LiF in the last 19 cm towards the patient. The reflector is made of lead, and fills the space between the side of the BSA cone and a coaxial cylinder 77 cm in radius. The sides of the collimator are shielded by a lead collar 2.1 cm thick, continuing the conical shape of the BSA.

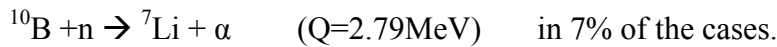
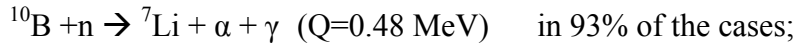
The BSA design that maximizes the total dose is 53.1 cm long, with a truncated conical shape with the large base towards the SCM and the small base towards the patient. The angle of the cone is 14.9 degrees, the large base towards the SCM has a radius of 23.3 cm while the small base towards the patient has a radius of 9.18 cm. The BSA is made of the following segments, starting from the SCM with the thickness indicated in cm: 3.5 cm lead, 27.4 cm ^7LiF , 20 cm fluental, 0.1 cm ^6LiF and 2.1 cm lead. The cone is surrounded on the side by a 1 mm thick ^6LiF in the last 21 cm towards the patient. The reflector is made of Al_2O_3 , filling the space between the side of the BSA cone and a coaxial cylinder 35 cm in radius; lead surrounds the alumina reflector with a coaxial cylinder 77 cm in external radius. The sides of the collimator are shielded by a lead collar 2.1 cm thick, continuing the conical shape of the BSA.

It is recommended to assess the feasibility of designing an ever-safe SCM featuring a k_{eff} of 0.995.

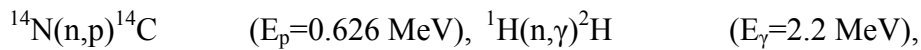
1. INTRODUCTION

Boron Neutron Capture therapy (BNCT) is being developed for, primarily, treatment for “glioblastoma multiforme”, otherwise un-treatable form of malignant brain tumor, which afflicts about 15,000 new cases per year in the US alone. This type of cancer is characterized by lack of localization, so it is almost impossible to treat surgically.

BNCT is a two-steps process in which first a ^{10}B -carrying tumor-selective compound is injected to the patient. After that the patient is exposed to a beam of neutrons. Low energy neutrons absorbed by the ^{10}B generate high energy ^7Li and ^4He reaction products via the following reactions:



These reaction products ionize and kill the cells in close proximity to their point of birth that are mostly cancerous cells. Additional neutron induced energy deposition reactions that take place in the brain are



as well as elastic scattering of fast neutrons with, primarily, the hydrogen nuclei. Figure 1 shows the cross sections for the three important neutron absorption reactions.

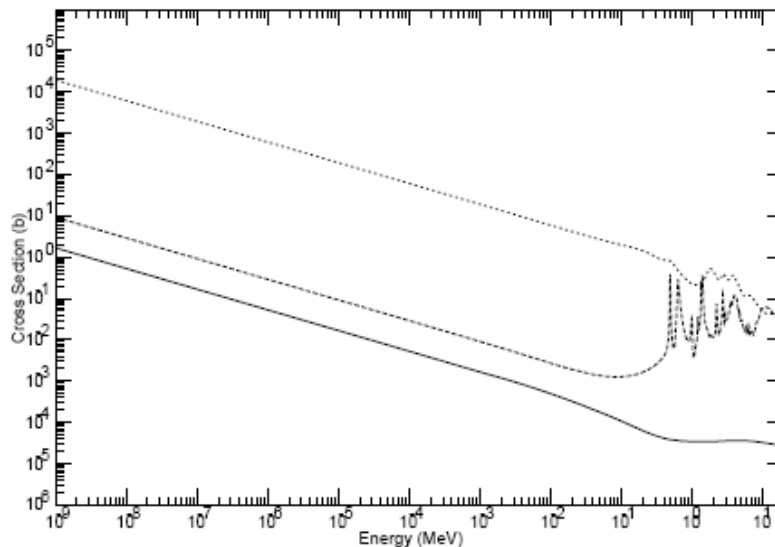


Figure 1: Cross sections of interest for BNCT. From top to bottom: $^{10}\text{B}(\text{n},\alpha)$, $^{14}\text{N}(\text{n},\text{p})$, $^1\text{H}(\text{n},\gamma)$

All the clinical trials of BNCT used neutron beams from nuclear reactors. Nuclear reactors are quite expensive and difficult to install and operate in hospitals. Accelerator neutron sources were also considered for BNCT but the presently available accelerator neutron sources that can provide the required neutron beam intensity are also quite large and expensive.

A novel, highly compact, fusion neutron source (CNS) based on a coaxial electrostatic accelerator is under development at the Lawrence Berkeley National Laboratory. This source is designed to generate up to $\sim 10^{12}$ D-D n/s. This source intensity is an order of magnitude too small for Boron Neutron Capture Therapy (BNCT) applications. The primary objective of this project is to assess the feasibility of using a small, safe and inexpensive subcritical fission assembly to multiply the fusion neutrons by a factor of ≥ 30 thus making a highly compact neutron source for BNCT and other medical and industrial applications.

Possible advantages of using a Sub-Critical neutron Multiplier (SCM) include the following: (a) Earlier commercialization of the CNS for BNCT, isotope generation and other possible medical and industrial applications. (b) Making it possible to attain the needed neutron source intensity using a D-D CNS. Without a SCM it is not likely that a D-D CNS could be developed to generate $\sim 10^{14}$ n/s. The advantage of a D-D over a D-T neutron source is lack of need for tritium. Tritium is very expensive and is a health hazard. Designing the facility to confine tritium is expensive. (c) Reducing the tritium consumption rate of D-T CNS by a factor of at least 30. (c) Reducing the power needed for operating a CNS without a SCM by a factor of at least 30. The SCM we have in mind is small and have low power – approximately 0.5 kW relative to 200 kW that will be deposited by the ion beam on the target of the D-D CNS described above. At that low power level it is possible to design the SCM to be passively super-safe. It can be designed in such a way that will not enable it to become critical under any circumstances. Passive cooling will ensure that the fuel will maintain its integrity and fission products will not be released. It will use a relatively small amount of low enriched uranium so it will not be of proliferation concern.

If feasible, the compact (possibly mobile) accelerator-driven system will provide an intense enough neutron source for medical applications in hospitals – for BNCT and other neutron therapy applications, for short-lived isotope production, as well as for research and application in material science, biology and other areas. The use of the subcritical multiplier will reduce, by an order of magnitude, the amount of electricity and tritium consumed by the CNS.

The primary feasibility issue addressed in this project is the feasibility of designing a SCM using uranium enriched to up to 20% ^{235}U that will be able to multiply the neutron current for patient treatment by at least a factor of 30 and, yet, be safe and economical.

An attempt at designing a SCM and BSA undertaken during the second year of the project did not yield satisfactory results. Hence, during the third year of the project we embarked upon a careful optimization studies attempting to reach the design goal for neutron beam intensity amplification. The optimization effort focused on, primarily, two components of the BNCT facility – the SCM and the BSA. Reflector/shield optimization was undertaken as well.

Following a description, in Section 2, of the compact neutron source considered in this project, we describe the starting point for the intensive optimization effort (Section 3), the methodology used for the optimization (Section 4), the optimization of the SCM (Section 5), the optimization of the BSA (Section 6) and close with a discussion (Section 7) and conclusions of this project (Section 8).

2. COMPACT NEUTRON SOURCE

A novel, highly compact, fusion neutron source (CNS) based on a coaxial electrostatic accelerator is under development at the Lawrence Berkeley National Laboratory. This source is designed to generate up to $\sim 10^{14}$ D-T neutrons/sec or $\sim 10^{12}$ D-D n/s.

Figure 2 shows the geometry and structure of the highly compact fusion neutron sources (CNS) under development [1, 2, 3] at the Lawrence Berkeley National Laboratory (LBNL) with the participation of UC Berkeley Nuclear Engineering students. They are based on a newly developed RF-driven multicusp ion source that is simple to operate and has long lifetime. The cylindrical source consists of a radio frequency driven D-D or D-T plasma. A 2 MHz or a 13.56 MHz radio frequency (RF) discharge produces the deuterium and/or tritium ions at the center of the cylindrical device. The RF-discharge yields a high-density plasma with a high fraction of mono-atomic ion species (D^+ for D-D and 50% D^+ + 50% T^+ for D-T). It enables attaining high neutron yield with low gas pressures (few mTorr). A vacuum contained within a quartz vacuum chamber is used for high voltage insulation around the target cylinder. The vacuum line, RF power, cooling water, and pulsed high voltage are brought in through a vacuum feed-through at one end of the cylindrical assembly.

The ions are accelerated through the extraction grid to an energy of 100 keV or higher. The cylindrical geometry of the source is advantageous for holding high voltage due to the uniform distribution of the electric field equi-potential lines between the electrode and target cylinders. There are no sharp corners or edges that can cause field enhancements that may lead to electron emission and voltage breakdown. This geometry also simplifies the beam optics such that the beam power is evenly distributed over the cylindrical target, simplifying heat removal. Because this target is wrapped around the source of deuterium ions, there is a large target area in a small space compared to an accelerator with flat plate target. This geometry also leads to a very high current limit as a result of the large beam extraction area.

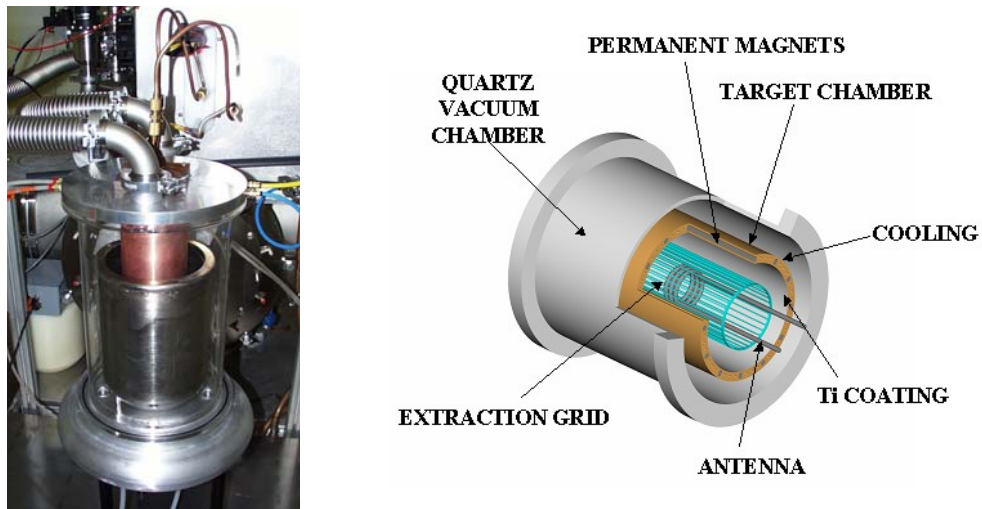


Figure 2: Perspective view of the compact neutron source (Right) and its testing setup (Left).

The ion beam impinges on a titanium coated copper or aluminum target where either the 2.45 MeV D-D or 14 MeV D-T neutrons are generated. The target consists of an inner diameter titanium layer on the order of 1 micron thick, a layer of copper to conduct the heat away from the target, a cooling channel for water and a coil (or permanent magnet set), and an outer layer of stainless steel. The permanent magnets or the coil is used to provide a small magnetic field to keep electrons from being accelerated towards the plasma electrode after the deuterons impact the target surface. The deuteron beam is used both to load the target and to drive the D-D reaction. The target is loaded continuously with the beam, and therefore has a long lifetime. The target lifetime is limited by the sputtering of the titanium layer. This layer thickness can be increased for longer life, but at the expense of increased resistance to heat removal. It is

necessary to keep the target temperature between 100 and 200 °C so that the deuterium remains at the surface and does not migrate below the target surface. The target is designed to withstand heat loading of at least 200 W/cm². This is only about one third of the heat flux that can be removed by water cooling without exceeding a target temperature of 150°C. The outer diameter of the source is approximately 26 cm. The source length is to be determined so that the target heat flux will not exceed 200 W/cm². For comparison, the 2x10¹³ neutrons per second D-T neutron source developed by the Sandia National Laboratory (SNL) [4] has a target that can handle up to 4 kW/cm².

The choice of the ion accelerating voltage is dictated by the energy dependent fusion cross section along with practical limitations. Figure 3 shows that the optimal acceleration energy for D-T fusion is nearly 150 keV. The neutron yield from a 1 Amper current of mixed D and T ions accelerated to 150 keV is estimated to be 5.9x10¹³ D-T neutrons per second. This neutron source intensity is sufficient for BNCT treatment of deep-seated brain tumors; the needed treatment time was found to be less than one hour [2]. The corresponding heat loading on the target is 150 kW. At a heat loading of 200 W/cm² the minimum required target surface area is 750 cm². A cylindrical target that is 16cm in diameter provides ~50cm² surface area per cm length. Hence the required target length is only 15cm.

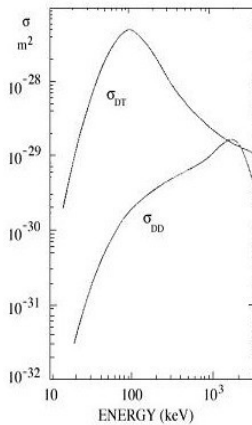


Figure 3: Energy dependent cross section for D-T and D-D fusion

For generating D-D neutrons it is energetically desirable to maximize the D beam energy up to the peak of the D-D cross section (See Figure 3). Unfortunately, it is difficult to work with voltages beyond 200 kV because power supplies and high voltage components such as cables and connectors are not commercially available and fabricating high voltage components would significantly increase costs. With a 200 kV extraction voltage and a 1 A beam current, this

source produces an isotropic source of 2.45 MeV neutrons at about 1.1×10^{12} neutrons per second. Though the maximum extracted beam current from the deuterium source is approximately 27A, the size and cost of the power supply as well as the cost of electricity becomes excessive beyond 400 kW, which corresponds to a 2A current at 200 KeV. This will provide a neutron source intensity of 2.3×10^{12} n/s and will require an effective target length of 40 cm. This neutron source intensity is a factor of 30 or so short of the intensity needed for BNCT of deep brain tumors.

3. METHODOLOGY

The calculations were performed using the 3-D Monte Carlo N-Particle (MCNP) code version 4C [5]. It is a general-purpose, continuous-energy, generalized-geometry, and coupled neutron/photon/electron transport code created by Los Alamos National Laboratory and distributed by Oak Ridge National Laboratory. MCNP4C can simulate coupled neutrons/photons transport in complex 3-D geometries accurately accounting for space and energy dependence. Two different MCNP computational modes are used for the simulations: the eigenvalue (or KCODE) mode to calculate the multiplication factor of the SCM and a source mode to simulate the transport of neutrons and associated secondary photons from the compact neutron source to the brain and to calculate the dose to the tumor and to the normal tissue of the brain.

The human body is simulated using the MIRD-5 anthropomorphic model for MCNP, with a small cylinder - 1 cm in radius - along the axis of the brain divided in 26 different axial zones to evaluate the doses at different depths inside the brain. 3-D semitransparent view of the human head in the MIRD-5 model, with the small cylinder for the dose tallies is shown in Figure 4. The direction of the neutron beam is assumed inclined at 37.7 deg to the patient spine, when the patient rests on his/her back.

The dose to the tumor and to the healthy tissue is calculated using Equations (1) and (2) in which D_B , D_n and D_γ are, respectively, the contribution of ^{10}B , other neutron interactions and photons to the dose.

$$D_{\text{tot}} = D_B \text{RBE}_B + D_n \text{RBE}_n + D_\gamma \text{RBE}_\gamma \quad (1)$$

$$D_B = \int k_B(E) \phi_n(E) dE; \quad D_\gamma = \int k_\gamma(E) E \phi_\gamma(E) dE; \quad D_n = \int k_n(E) \phi_n(E) dE \quad (2)$$

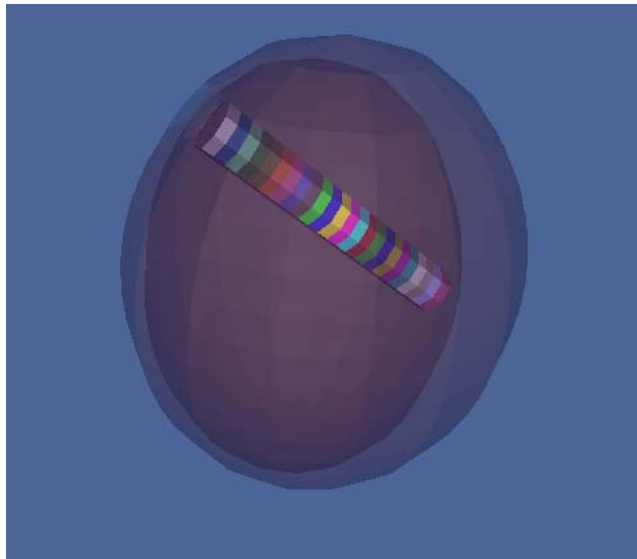


Figure 4: 3-D semitransparent view of the human head as modeled in MIRD-5: visible is the skull (external ellipsoid), the brain (the internal ellipsoid); the volumes over which dose tallies are calculated are the colored cylindrical volumes.

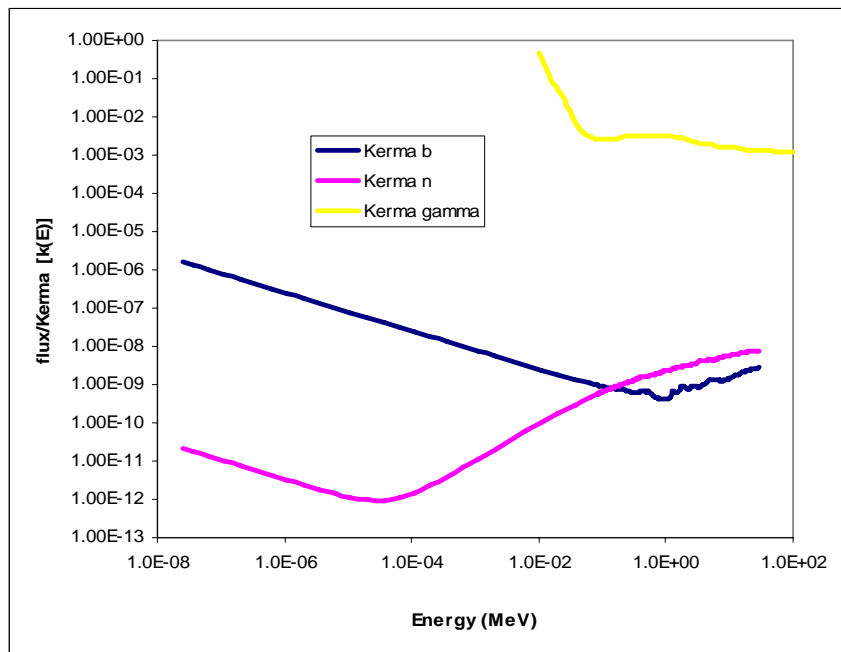


Figure 5: Fluence to kerma conversion factors as a function of energy.

$k(E)$ is the fluence-to-dose conversion factors and k_γ is the photon mass attenuation coefficient. $\phi_x(E)$ is the energy dependent fluence of either neutrons ($x = n$) or photons ($x = \gamma$). The boron,

neutron and photon doses are weighted by their Relative Biological Effectiveness (RBE). The boron contribution to the dose is also weighted by the Compound Factor (CF_B) that were factored in the respective RBE's. The CF_B is different for healthy and tumor tissue.

Numerical values of all these terms are taken from references 1 and 2. What limits the patient treatment time is the constraint of 12.5 Gy for the maximum dose to the healthy tissue¹. This constraint also limits the maximum dose that can be delivered to the tumor. The tumor control dose, that is, the minimum dose required to kill the tumor is assumed to be 20 Gy. The boron concentration assumed is 45 and 13 mg ¹⁰B per gram of, respectively, normal tissue and tumor¹.

Three optimization studies were performed: optimization of the sub-critical neutron multiplier (SCM), optimization of the beam-shaping assembly (BSA) and optimization of the reflector. The SCM optimization objective is to maximize the current of neutrons that leak out from the SCM in the direction of the patient, without exceeding the maximum permissible k_{eff} . Minimizing the required uranium inventory is another objective. SCM design variables considered include the uranium enrichment level in the range not exceeding 20% ²³⁵U (for proliferation concerns), SCM shape and dimensions, fuel thickness and moderator thickness.

The objective of the BSA optimization is to maximize the tumor dose rate using the optimal SCM while maintaining a tumor-to-normal tissue dose ratio of at least 20 to 12.5 (corresponding to the tumor control dose and to the healthy tissue dose limit). The BSA design variables include its shape, dimensions and composition.

The reflector optimization is, in fact, an integral part of the SCM optimization and of the BSA optimization. The reflector design variables are composition and thickness.

The overall design objective is to get a treatment time that does not significantly increase beyond one hour when the effective multiplication factor of the SCM is $k_{eff} = 0.98$.

4. REFERENCE SYSTEM

Figure 6 is an x-z view of the BNCT facility found optimal last year² as reported in last year's progress report.

¹ BNL clinical trial protocol sets the limit of 12.5 Gy for healthy tissue and no limit for the skin. Reddening has been observed at 8 Gy (limit not applied in this study).

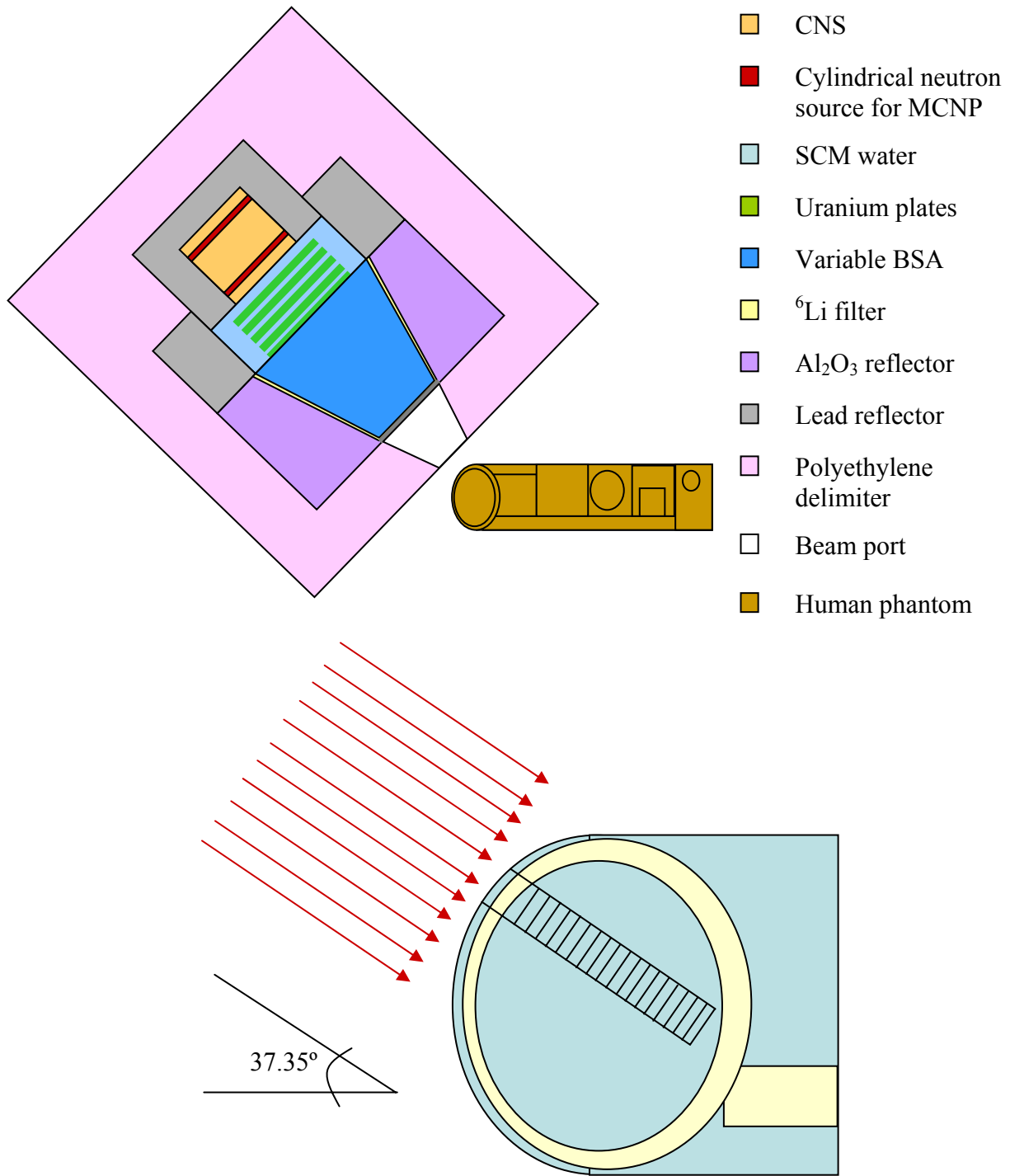


Figure 6: x-z view of the reference BNCT facility arrived at in 2005 (top) and the neutron beam incident on MIRD-5 phantom head

In this system the CNS is positioned vertically, the SCM is made of five 1 cm thick metallic-uranium disks spaced 2.5 cm apart. Table I gives the dimensions of the reference system, Table II gives the densities of the reference system. The uranium enrichment is 9% for the first three plates (i.e. towards the CNS) and 12% for the last two (i.e. towards the BSA). The conical BSA is made of ^7LiF in the 30 cm facing the SCM and Flualtal² in the last 20 cm facing the brain. The dimensions of the BSA are shown in Table I: the truncated cone has the larger base towards the BSA and the smaller base towards the collimator and the brain. The angle of the cone is 14.9 degrees. The cladding of the uranium plates is neglected. The cost of the uranium for the SCM in this configuration is about \$ 215,000, assuming a unit cost of 29.2\$/lb of U_3O_8 and 110\$/SWU.

Table I: Dimensions of the reference system

CNS		
8.0965	cm	Cu cylinder (IR)
8.414	cm	Cu cylinder (OR), cooling channel (IR)
9.049	cm	Cooling channels (OR), outer skin (IR) (water)
9.2075	cm	Outer skin (OR)
12.495	cm	Quartz vacuum chamber (IR)
13.005	cm	Quartz vacuum chamber (OR)
20.955	cm	Length of the CNS
10	cm	Thickness of the Pb reflector
SCM		
15	cm	U plates radius
20	cm	Water reflector radius
35	cm	Radial Pb reflector radius
BSA		
30	cm	Thickness of the ^7LiF part
20	cm	Thickness of the flualtal part
35	cm	Outer radius of the alumina reflector
1	mm	^6LiF filter thickness
1	mm	Lead filter thickness
6	cm	Radius of the collimator
Outer lithiated polyethylene shield		
15	cm	Thickness of the front polyethylene shield
3	cm	Thickness of the frontal lead shield
20	cm	Thickness of the back polyethylene shield
55	cm	Polyethylene shield radius

² Flualtal: Al/AIF₃ (40%/60%)

Table II: Material densities of the reference system

	Densities
U metal	19.05g/cc
Water	1g/cc
Lead	11.34g/cc
Alumina	3.69g/cc
⁷LiF	2.635g/cc
Fluental	2.74g/cc
Lithiated polyethylene³	0.9843g/cc
⁶LiF	2.6g/cc

Figure 7 shows the total dose to the healthy tissue and to the tumor as a function of the cell number that denotes the depth into the brain. The maximum tumor dose of 47 Gy is reached at about 2.5 cm depth with an irradiation time of about 25.6 hours. The lethality range, that is, the range over which the dose exceeds the tumor control dose of 20 Gy, is from 0 cm to about 7 cm. Figure 8 shows the ratio between the dose to the tumor to the dose to the healthy tissue, also denoted as H/L; it peaks at around 3 cm depth at about 4.

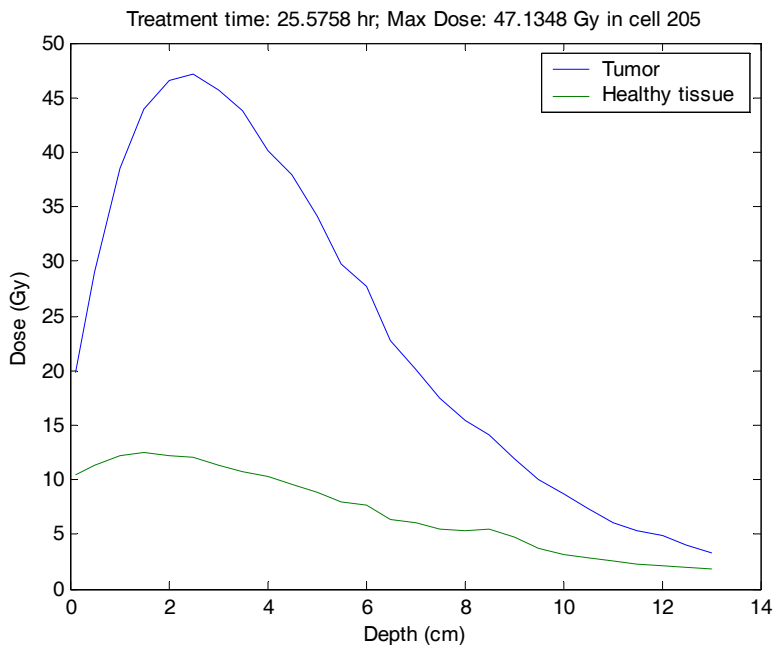


Figure 7: Total dose to the healthy tissue and to the tumor as a function of depth into the brain. Goff's final setup

³ Lithiated polyethylene atomic fraction: ¹H 0.5262; C 0.2969; ¹⁶O 0.1007; ⁶Li 0.0724; ⁷Li 0.0038.

The above design is not satisfactory because the required treatment time is significantly longer than the one hour design objective even with a SCM that is unrealistically close to criticality – $k_{\text{eff}}=0.99193 \pm 0.0006$.

In the following we describe a new thrust for optimizing the BNCT system with the goal of establishing whether or not it is possible to use the 10^{12} n/s D-D compact neutron source interfaced with a small $k_{\text{eff}}=0.98$ SCM to achieve an intense enough neutron beam for effectively treating brain tumors in approximately 1 hour. The best design we came up with needs a 3.4 hours irradiation time when k_{eff} is 0.98. This is an 18-folds improvement relative to the previous optimal design. Although the neutron multiplication is short of the initial design goal by a factor of 3.4, we cannot preclude this CNS/SCM combination from being feasible. For example, it may turn out that the CNS could be designed to deliver nearly 5×10^{12} n/s implying a treatment time of less than one hour.

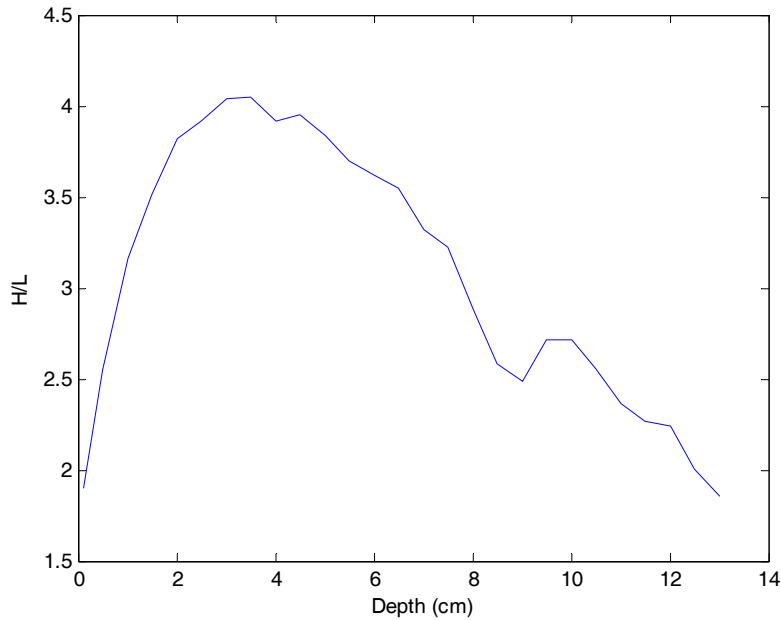


Figure 8: H/L (Tumor-to-healthy tissue dose ratio) in Goff's final setup

5. SCM OPTIMIZATION STUDIES

5.1 Cylindrical Sub-Critical Neutron Multiplier (SCM) optimization

In this and the following sections the k_{eff} will be kept at 0.992 to compare properly with the design in Goff's study. Later we will switch back to $k_{\text{eff}}=0.98$, which is a more realistic value.

The number of neutrons multiplied by the SCM (M) in first approximation depends only on k_{eff} :

$$M=1+ k_{\text{eff}}+ k_{\text{eff}}^2+ k_{\text{eff}}^3+\dots=1/(1-k_{\text{eff}}).$$

Additionally, by definition, $k_{\text{eff}}=k_{\infty} * P_{\text{NL}}$, where P_{NL} is the non-leakage-probability. To maximize the effectiveness of the SCM, we want the highest leakage probability, P_{L} , in the direction of the patient. To accomplish this we first have to find the highest possible k_{∞} with the constraint of $k_{\text{eff}}=0.992$ and enrichment less or equal to 20% for proliferation concerns.

The optimal SCM configuration was found with the help of SWAN [3] and finalized by MCNP and TRITON/NEWT [6,7]. A 0.05 cm thick aluminum clad, not accounted for in the previous analysis, was included on both sides of the uranium slabs. The design variables were the uranium thickness and the water gap thickness between the fuel plates. All the regions surrounding the SCM had the dimensions and composition as of the reference design shown in Figure 6. With the exception of the SCM, all the dimensions of this new system are specified in Table I and the densities in Table II.

The optimization process was performed in the following way: we started from a first guess on the geometry obtained by SWAN - fuel thickness of 0.06 cm and water thickness of 0.720 cm. We then used MCNP to simulate a representative unit cell with reflective boundary conditions to confirm/ refine the SWAN first guess. Initially we kept the uranium thickness constant and found the water spacing that gives the highest possible k_{inf} -slightly higher at 0.84 cm (see Figure 9 for the water thickness parametric study); then we kept the ratio between the water and fuel volumes at the optimal value and scaled the uranium thickness correspondingly.

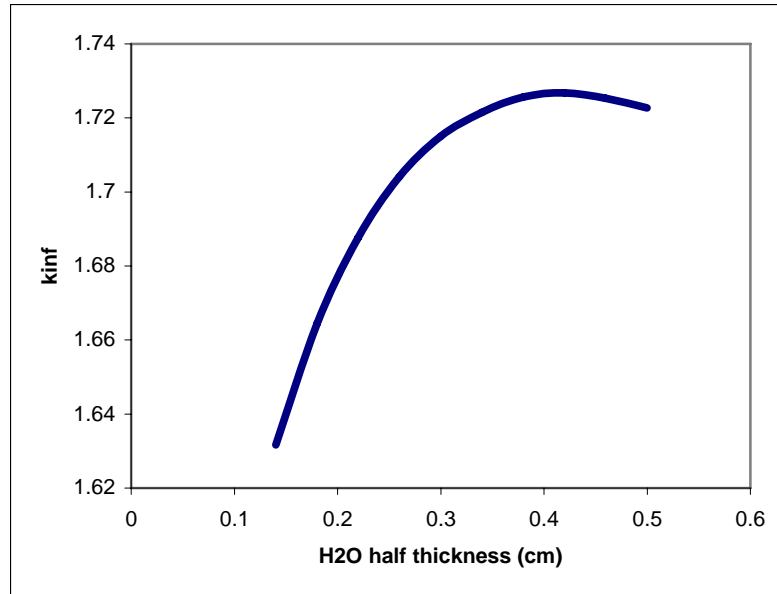


Figure 9: k_{inf} as a function of the H₂O thickness for a system of U_{20%} metallic 0.06 cm thick and 0.05 cm Al clad on both sides

The resulting highest k_{∞} system was found made of 0.06 cm thick metallic 20% enriched U slab enclosed in aluminum cladding of 0.05 cm on both sides and with 0.84 cm H₂O between the fuel slabs (see Figure 10). The volume that in the previous study contained five one-centimeter-thick fuel slabs of lower enrichment uranium could exactly fit 17 optimal-geometry slabs.

The optimal k_{∞} is 1.7267 versus 1.3612 in the previous reference model (Figure 5). Table III compares the leakage probability in the different directions: one facing the CNS, one facing the BSA and the side surface. The k_{inf} calculated by studying a representative unit cell, as we did here, does not account for the spectrum alteration induced by the insertion of the SCM in the real system. This effect is particularly pronounced in this study, because of the small dimensions of the SCM and its high surface to volume ratio. Therefore, theoretically the k_{inf} optimization study should have been re-done each time a change was made to any part of the system such as reflectors, geometry, composition of the BSA etc. For practical purposes we kept the optimal unit cell geometry throughout the study.

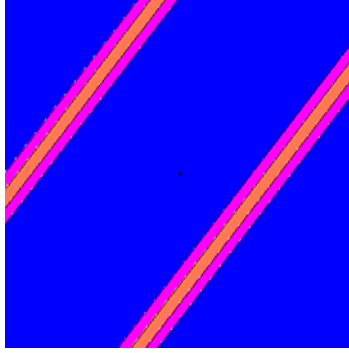


Figure 10: Details of the optimal $U_{20\%} + H_2O$ slab configuration inside the SCM. The uranium slabs (orange) are 0.06 cm thick; the aluminum cladding (pink) is 0.05 cm and the water (blue) is 0.84 cm thick. .

Table III: Net PL (leakage probabilities) for the reference Goff model and for the thin slab model from the three surfaces: CNS, BSA and the side surface. The PL is higher in the side direction.

Surface	Reference SCM	Optimal SCM
BSA	0.1257	0.1478
Radial	0.1285	0.1850
CNS	0.1317	0.1679
Total	0.3860	0.5007

This implies that in the new SCM design the number of neutrons that will leak out per fission neutron is 17% higher than in the previous reference design. This makes the new SCM a more effective source of neutrons for our application.

Additionally the new SCM design needs substantially lower amount of uranium; the cost of the required amount of uranium reduces from \$215,000 of the reference design to \$91,000, despite of the higher cost for the higher enrichment – 20% versus 9% for 60% and 12% for 40% of the uranium.

Using the newly optimized SCM the maximum dose of about 43 Gy is achieved at about 3 cm depth as shown in Figure 11. The required irradiation time is 18.6 hours; this is the time it takes for the maximum healthy tissue dose, also shown in Figure 10, to reach the 12.5 Gy constraint. The lethality range is from 0 to 6.5 cm. Figure 12 gives the tumor (H) – to – healthy tissue (L) dose ratio as a function of depth in the brain. This is an improvement to the reference 24 hours treatment time.

Table III also indicates that the largest leakage probability is in the side direction, which is undesirable: to improve the SCM performance we should maximize the net leakage in the BSA direction.

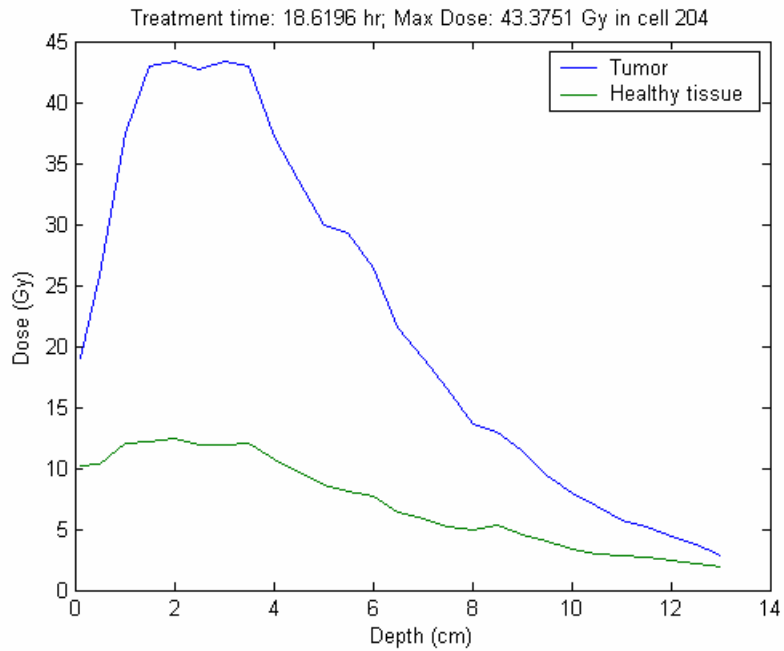


Figure 11: Total dose to the healthy tissue and to the tumor as a function of depth

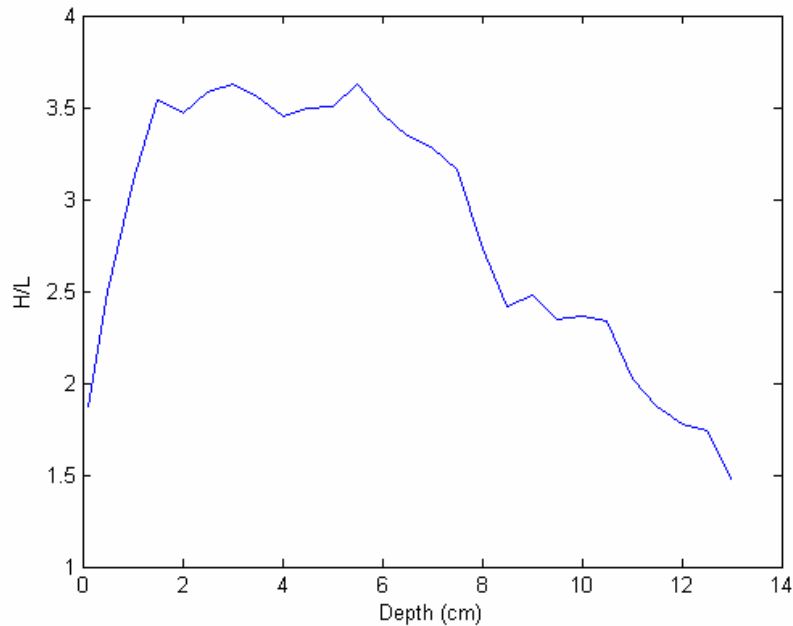


Figure 12: Tumor-to-healthy tissue dose ratio (H/L)

5.2 Improvement of the SCM reflector

To minimize the radial leakage from the SCM we need a very good reflector on the side BeO is tries instead of the lead reflector of the reference design. The choice of BeO is based on a companion reflector study that is summarized in Appendix A.

Figure 13 shows the BNCT facility considered in which BeO substitutes Pb on all sides, including around the CNS. The thickness is kept the same as in the Pb case (see Table I for the dimensions of the Pb reflector). Around the SCM the outer radius is kept as in the reference design at 35 cm, but the water reflector has been substituted with Be, while the outer radius of the U disks is adjusted to obtain the desired level of k_{eff} . The improved reflection resulted in an increase in the multiplication factor that was compensated by reducing the size of the SCM. So as to maximize the axial leakage probability SCM core radius was increased from 15 cm to 19.9 cm while its thickness was reduced from 17 cm to 9 cm. As a result the number of fuel plates was reduced from 17 to 9 while k_{eff} was maintained at its reference value of 0.992. The reduced amount of uranium resulted in extra saving in the total uranium cost, which for this case is estimated at \$86,000.

Figure 14 and Figure 15 show the resulting dose distributions in the brain: the maximum dose is about 41.33 Gy; it is achieved in about 9.5 hours of irradiation time at a depth of about 2 cm inside the brain.

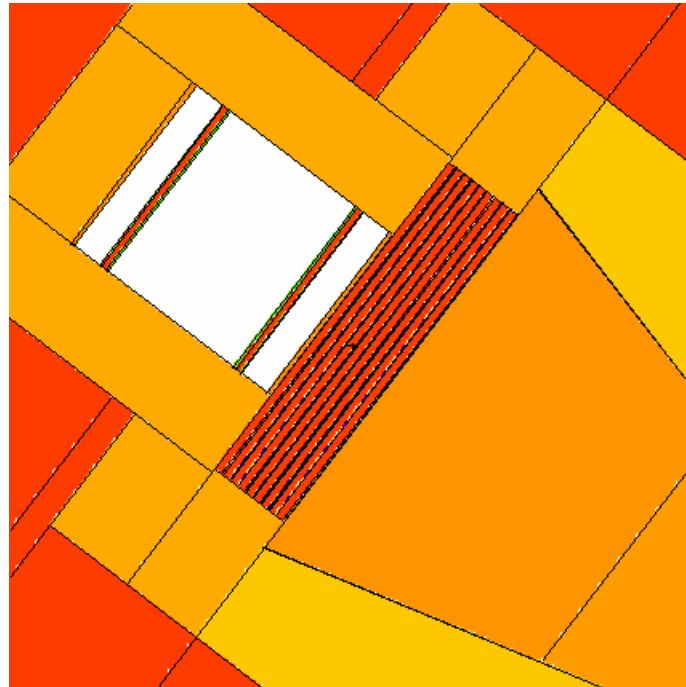


Figure 13: x-z view of the system with the improved reflector: the color represent the density of the materials in the system, from the orange for the lighter to blue for the heavier like uranium. The light orange around the CNS is BeO, the orange around it is lithiated polyethylene, the uranium slabs are nine. The orange with a conical shape on the right is the BSA; the yellow around it is the alumina reflector.

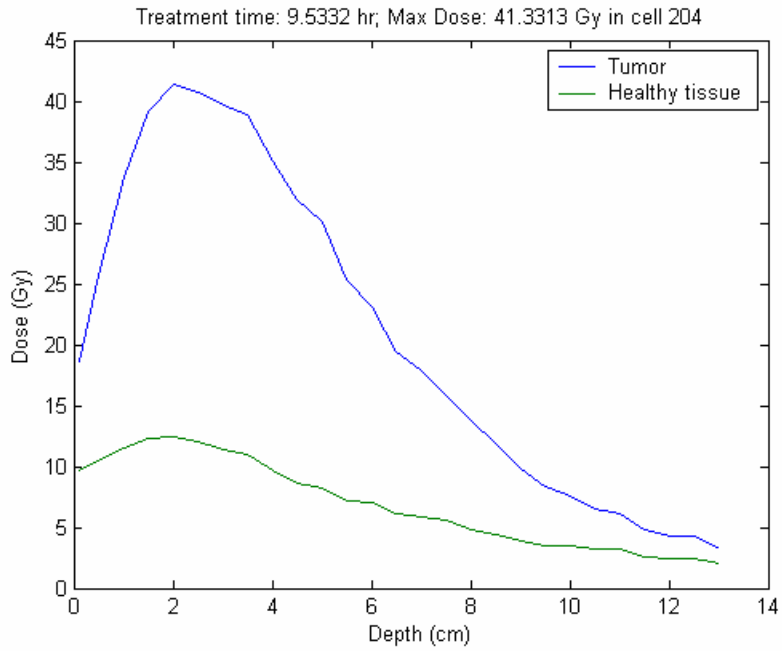


Figure 14: Total dose to the healthy tissue and to the tumor as a function of depth

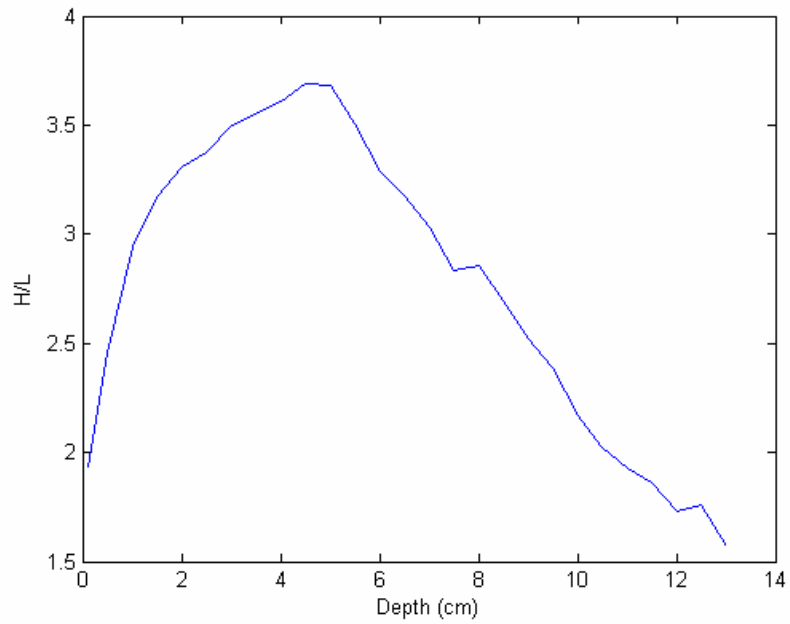


Figure 15: Tumor-to-healthy tissue dose ratio (H/L)

5.3 Increasing the source effectiveness

Despite of the very effective BeO reflector around both the CNS and the SCM, the fraction of neutrons generated by the CNS that reach the SCM in the previously considered configuration is only about 40%. In order to improve the “source utilization factor” or source effectiveness, defined as the fraction of neutrons emitted by the CNS that reach the sub-critical multiplier, the SCM geometry was modified so as to increase the solid angle by which the SCM “views” the CNS.

Figure 16 shows the re-designed SCM; it has a “cup” shape that surrounds the CNS on three sides. The CNS, orientated axially, is surrounded by 2 cylinders of aluminum-clad U_{20%} fuel having the same water-to-fuel volume ratio as of the original optimal SCM described in Section 5.1. The number of vertical plates is reduced from 9 to 6 and their radius is adjusted to 17.45 cm to achieve a k_{eff} of 0.992. This also resulted in further reduction of the uranium inventory bringing down the estimated uranium cost to about \$74,500.

The dose results for this design are shown in Figure 17, where the maximum dose of about 46.38 Gy is delivered at a depth of 2-4 cm with an irradiation time of 6.8 hours. The lethality range, or the region where the dose to the tumor is higher than 20 Gy is between 0 and 7 cm. The H/L ratio is shown in Figure 18; its peak of about 3.7 is at about 3.5 cm depth.

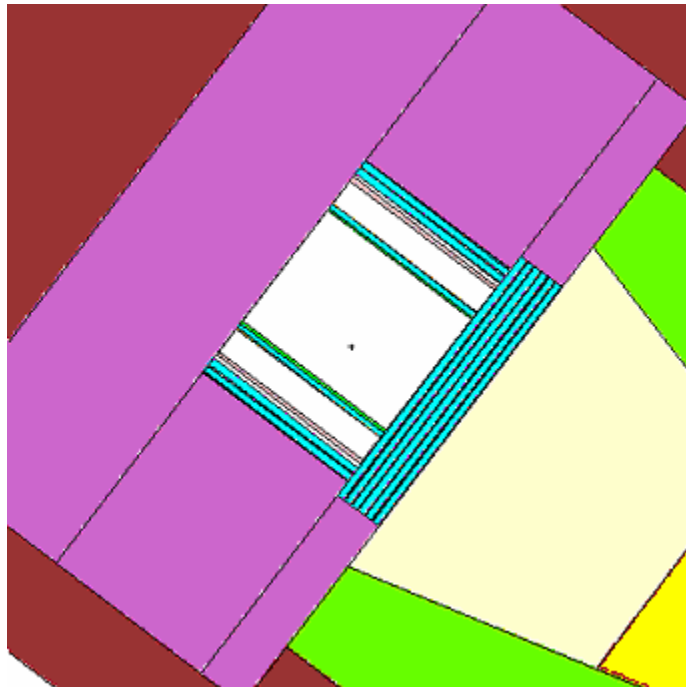


Figure 16: x-z view of the system with improved source utilization. The source is encased in the SCM, using 2 co-axial cylinders along the source, and 6 vertical plates. The violet is the BeO reflector surrounding both the CNS and the SCM.

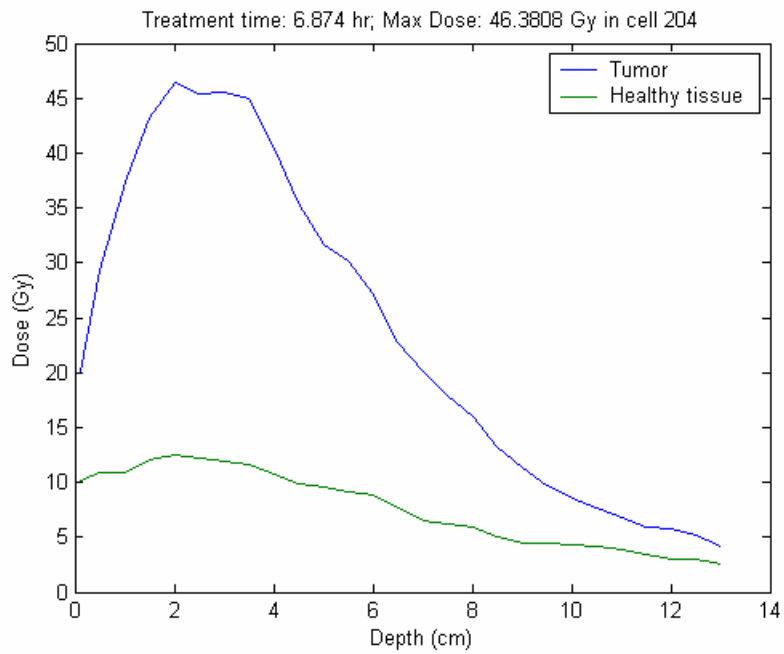


Figure 17: Total dose to the healthy tissue and to the tumor as a function of depth

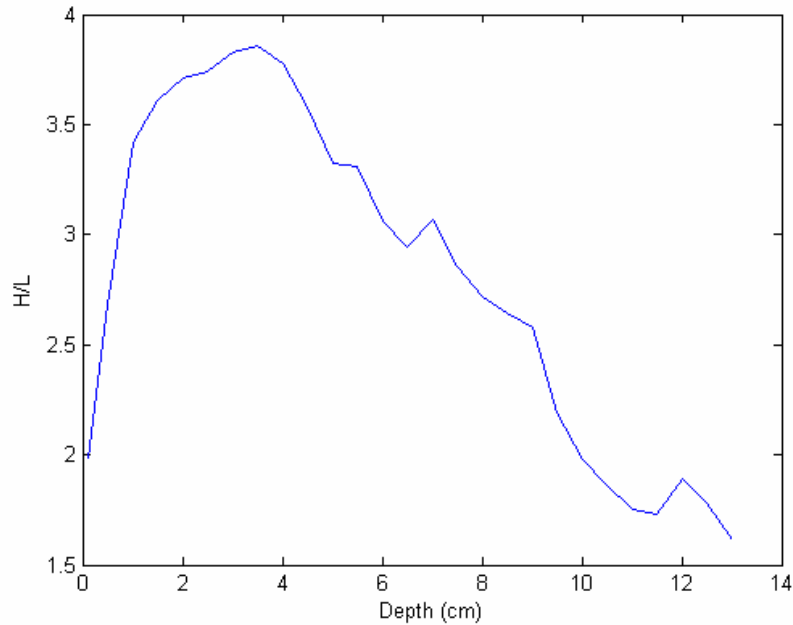


Figure 18: Tumor-to-healthy tissue dose ratio (H/L)

5.4 Further reflector thickening

The thickness of the BeO reflector considered so far, in the vicinity of 20 cm, is not sufficient for approaching the performance of an infinite reflector. For the reflector to approach the performance of an infinite reflector, its thickness should be approximately twice the thermal neutrons diffusion length (L), which for BeO is about 31 cm. This is verified in Figure 19 that shows k_{eff} dependence on the reflector thickness. In the following a 62 cm thick BeO reflector is used. The resulting BNCT facility is shown in Figure 20 where the BeO reflector is in pink. Additional modification is an insertion of an extra layer of lead surrounding the alumina reflector of the BSA, shown violet in the Figure. The extra layer of lead was added to fill the space and was chosen because of the good reflective properties towards fast neutrons. The total thickness of the alumina plus the lead equals the thickness of the BeO reflector. Additionally, the ${}^6\text{LiF}$ filter surrounding the BSA in the part close to the SCM was eliminated. The original function of this layer was to reduce the current of thermal neutrons that leak from the BSA into the alumina reflector, where they generate unwanted capture gamma rays. However, the proximity of ${}^6\text{Li}$ to the SCM significantly degrades the reflector performance thus penalizing k_{eff} .

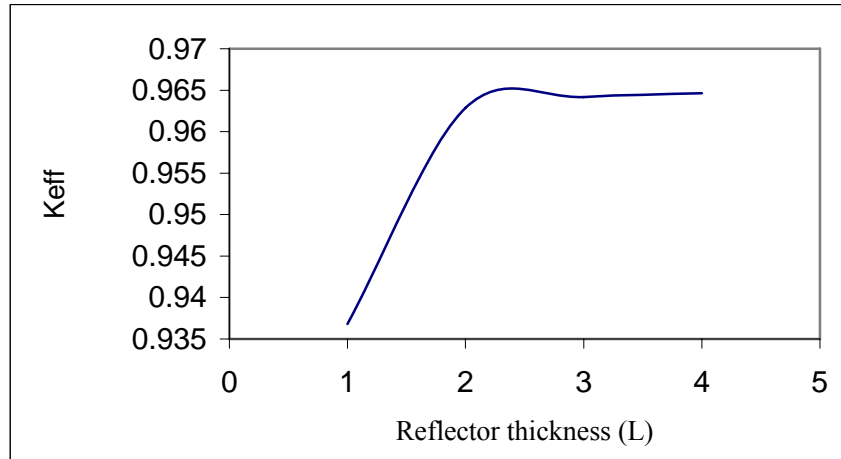


Figure 19: k_{eff} as a function of Be reflector thickness in units of the thermal diffusion length (L)

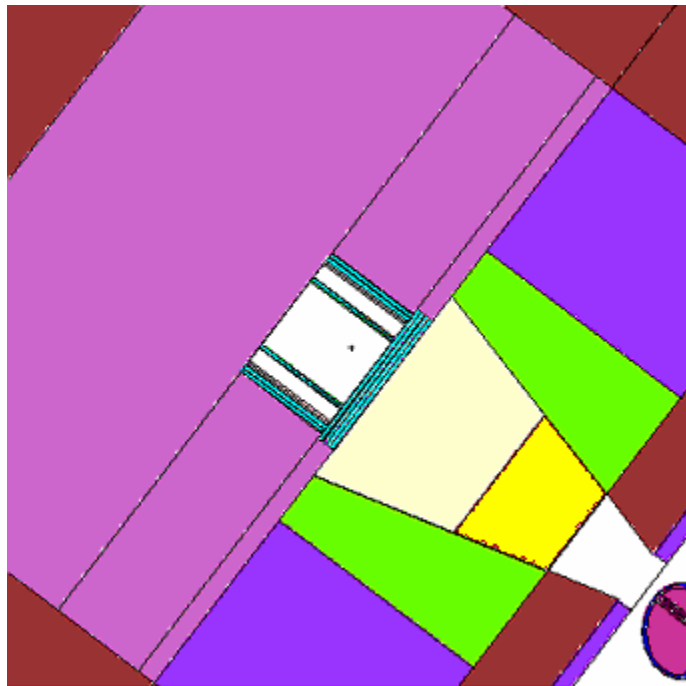


Figure 20: x-z view of the system with improved reflector: the thickness of the BeO (in pink) is brought to 62 cm, an extra layer of Pb (in violet) is added surrounding the alumina reflector of the BSA, the ${}^6\text{LiF}$ layer between the BSA and the alumina reflector is eliminated in the first part.

With the resulting substantial improvement in the reflector it became possible to further reduce the size of the SCM for the same k_{eff} . The horizontal cylinders surrounding the CNS

axially are left unchanged but the number of vertical plates is reduced from 6 to 4, and the radius is adjusted to 17.61 cm to match the k_{eff} of 0.992. The total U cost drops to \$60,300.

The dose results for this design are shown in Figure 21 and in Figure 22; the maximum dose of about 37 Gy is reached in 3.5 hours at about 2 cm depth while H/L peaks at ~4 cm depth.

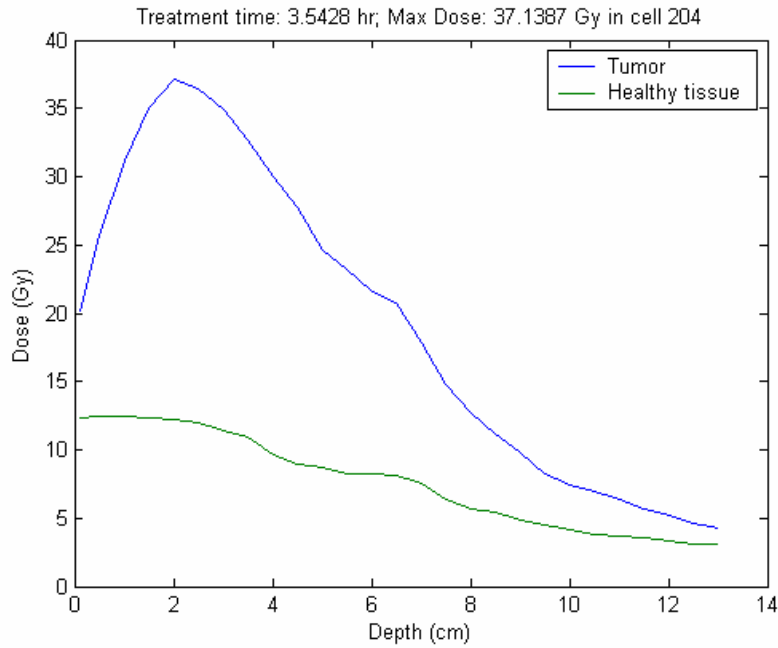


Figure 21: Total dose to the healthy tissue and to the tumor as a function of depth

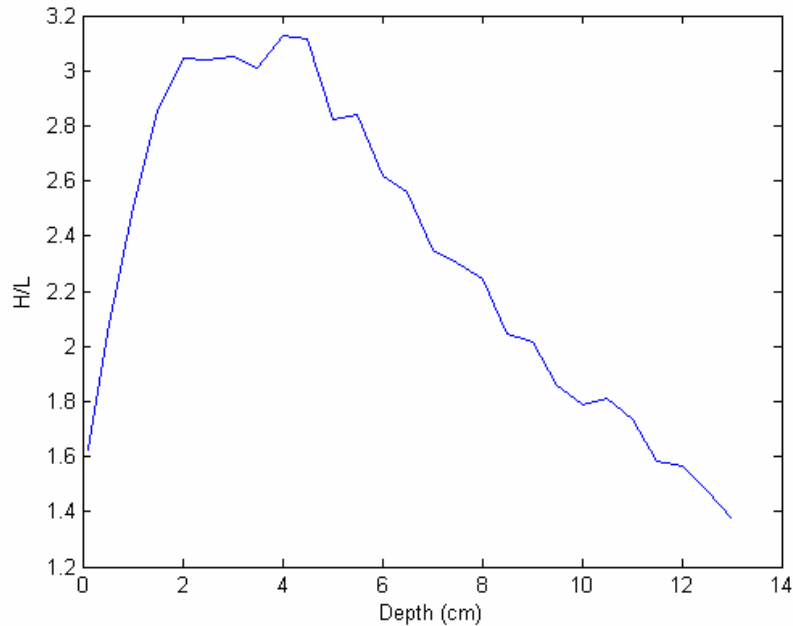


Figure 22: Tumor-to-healthy tissue dose ratio (H/L)

As part of this analysis a study was performed of whether a combination of a relatively thin BeO layer followed by Pb on the outer side would offer a better performance than BeO alone, considering the good reflective properties of Pb, especially for fast neutrons. The resulting performance was found to be inferior to that of BeO alone: therefore we opted for an “all BeO” solution as an upper boundary on the system performance.

5.5 Summary of SCM optimization for k_{eff} of 0.992

The SCM and reflector optimizations reported upon in Sections 5.1 through 5.4 under the $k_{\text{eff}}=0.992$ constraint achieved a significant improvement in the BNCT facility performance – going from an irradiation time of more than 24 hours to about 3.4 without sacrificing the lethality range while reducing the cost of needed uranium from \$215,000 to \$60,300.

However, it is doubtful that a k_{eff} of 0.992 will be licensable as it is subcritical by only slightly more than 1\$ of reactivity. A significantly safer design k_{eff} is 0.98; many accelerator driven sub-critical reactors designed for transmutation of nuclear waste use 0.98 as their maximum k_{eff} design goal. Unfortunately, this seemingly small reduction in k_{eff} translates into a substantial reduction in the SCM neutron multiplication and a comparable increase in the

required irradiation time. Thus, whereas the reference $k_{\text{eff}}=0.992$ system has a multiplication ($M=1/(1-k_{\text{eff}})$) of 125 and requires an irradiation time of 3.34 hours, reducing k_{eff} to 0.98 would reduce the multiplication to 50 and increase the irradiation time to about 8.35 hours. Hence further design improvements are needed.

Several other cases were studied in the course of this optimization, specifically:

- 1 the insertion of a Be layer at the interface between the SCM and the CNS, to take advantage of the $n,2n$ reaction with the 2.5 MeV neutrons;
- 2 the insertion of an H_2O layer at the interface between the SCM and the BSA to increase the fission density towards the end of the SCM;
- 3 the insertion of a cone⁴ in the back of the SCM, later substituted by the insertion of the entire CNS inside the SCM, fill it with.

Each of these modifications were compared based on the necessary treatment time, but none showed any significant improvement.

5.6 Reduction of k_{eff} from 0.992 to 0.98

The design change adopted for reducing k_{eff} to 0.98 by slightly decreasing the radius of the vertical plates of the SCM shown in Figure 20 from 17.61 cm to 16.75 cm; everything else is left unchanged. The total cost of the uranium is reduced slightly to \$57,400.

Figure 23 shows that the maximum tumor dose is about 36 Gy at 2 cm depth inside the brain, achieved in about 6.3 hours of treatment, which is better than the expected 8.45 hours guessed based on the expected change in the subcritical multiplication, as estimated in the previous section. Considering that the tumor control dose is about 20 Gy, this setup could kill tumors situated up to about 6 cm depth. Figure 24 shows the ratio between tumor dose (H) and healthy tissue dose (L). H/L peaks at a depth of 3-4 cm at about 3.2, and is as low as 1.5 in the skin and in the deepest part of the brain. The dose rate at 2 cm depth is 5.7 Gy/hour.

⁴ The cone has been filled with aluminum and in a second configuration with 5% enrichment ^{235}U slabs.

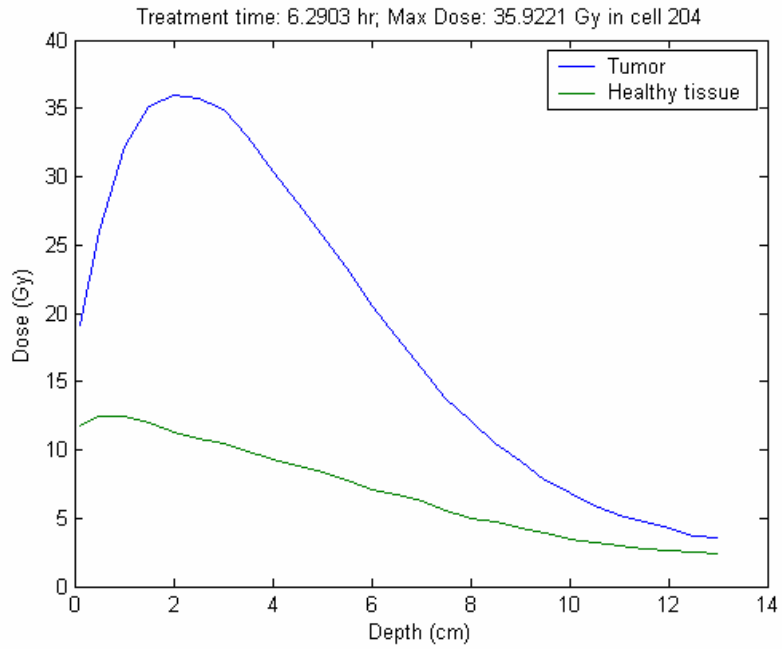


Figure 23: Total dose to the healthy tissue and to the tumor as a function of depth

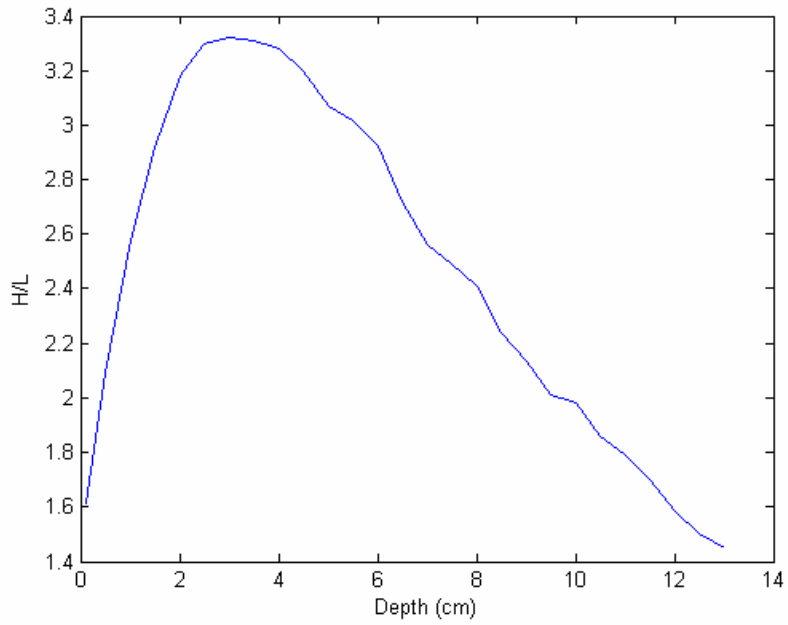


Figure 24: Tumor-to-healthy tissue dose ratio (H/L)

6. BSA OPTIMIZATION STUDIES

The optimization of the beam shaping assembly (BSA) composition is done using the optimal sub-critical multiplier described in section 5.6 and shown in amplification in Figure 25. The SCM is made of two 20% enriched uranium metal fuel cylinders surrounding the CNS coaxially and four circular elements positioned between the CNS and the BSA. The horizontal cylinders are 20.995 cm long – exactly as much as the CNS – and 0.06 cm thick, with 0.05 cm clad on both sides and 0.84 cm water between them. The innermost cylinder has a radius of 13.5 cm. Similarly the vertical plates are 0.06 cm thick and the clad is 0.05 cm thick. The water gaps in-between the fuel elements are 0.84 cm thick. The entire SCM is encased in aluminum cladding, which is the physical barrier between the CSN and the SCM. Immediately after the enclosing cladding there is a water layer of 0.84 cm, followed by the 4 uranium plates. The last uranium plate is in direct contact with the BSA.

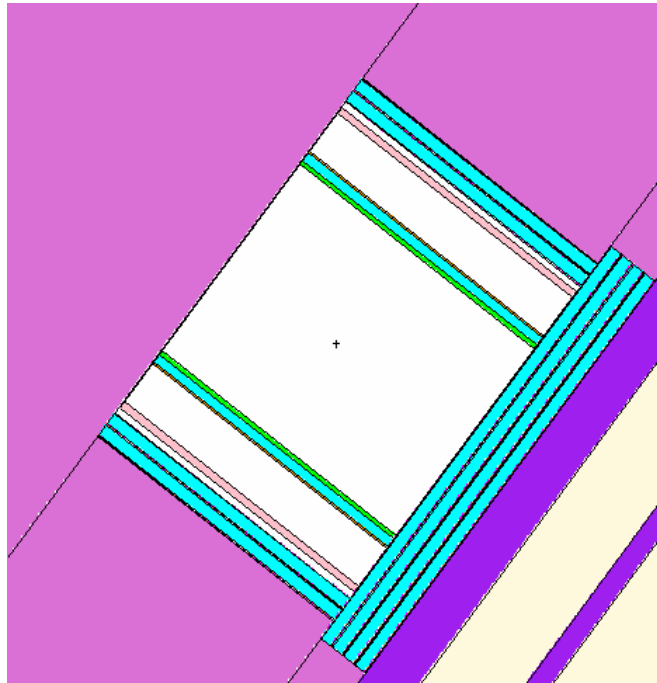


Figure 25: CNS and SCM, x-z view. The pink is the beryllium oxide reflector surrounding the CNS (the white central space); the light blue is water between the uranium plates of the SCM (which are too thin to be distinguished in this plot); the violet is the lead in the BSA and the white in the bottom white corner is the ${}^7\text{LiF}$ in the BSA.

The following sections describe, in chronological sequence, the successive BSA optimization steps. Un-successful design modifications are also reported as they add to our understanding of the BSA performance and the information they provide could be useful for future studies.

6.1 Case One: Reference design

The reference BSA is that described in Section 4. Figure 26 shows the contribution to the healthy tissue dose (L) of the gamma-rays, neutron absorption in boron and neutron absorption in nitrogen. The gamma-rays contribution is found to be the dominant. This is undesirable as this component delivers the same dose to the healthy tissue as to the tumor. Fortunately this component can be easily reduced by inserting additional high Z material in the beam path.

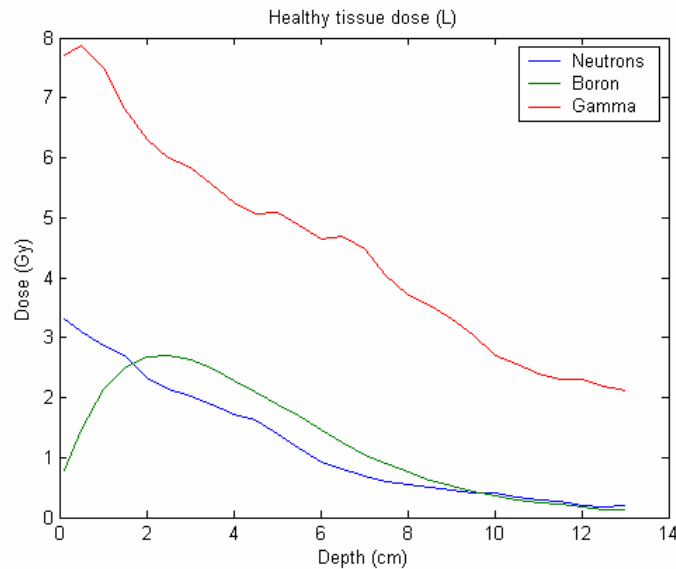


Figure 26: Components of the healthy tissue dose (L); Case 1

Figure 27 shows the normalized neutron current spectrum at various depths in the BSA. The current considered is the net current through planes in the BSA that are perpendicular to the BNCT facility axis. A negative current at the SCM-BSA boundary implies that neutrons of that specific energy stream back from the BSA to the SCM. Previous studies established that neutrons with energy below 1 KeV and above 20 KeV are not desirable as their tumor dose to normal tissue dose contribution ratio is too low [1]. Observing the current spectrum between the lead layer and the brain it appears that the spectrum is too soft: the components below 1 keV are

therapeutically undesirable. Therefore some changes need to be made to avoid slowing down the neutrons excessively.

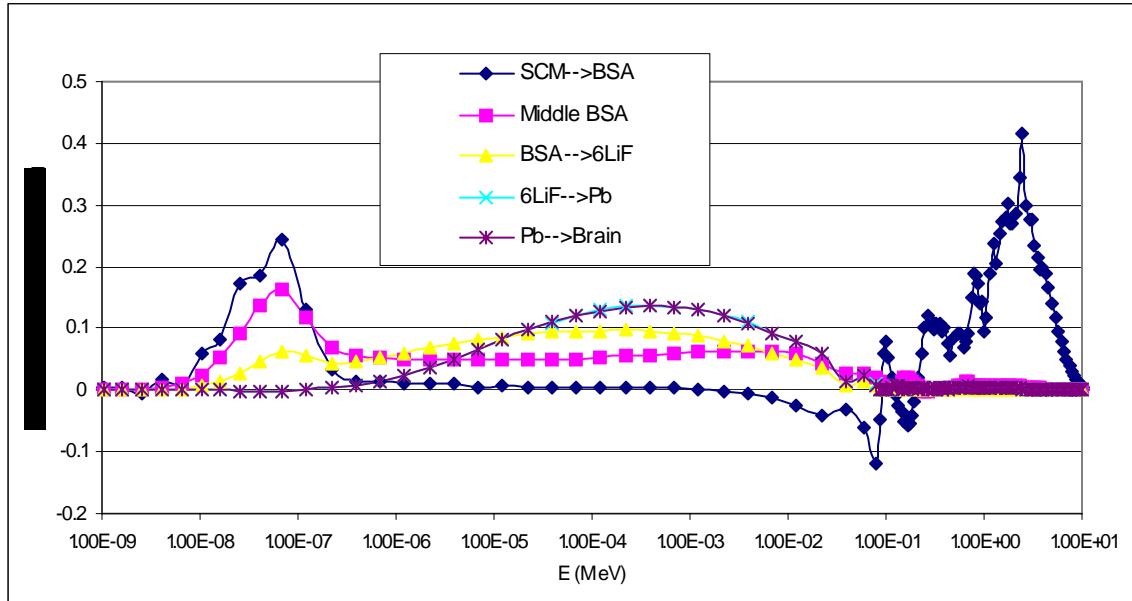


Figure 27: Net neutron currents per unit lethargy at various depths inside the BSA

6.2 Case Two: SWAN-optimized BSA

In a previous study [13,14] the one-dimensional optimization code SWAN was set to find the highest possible dose to the tumor, H , for a given H/L – tumor-to-healthy tissue dose ratio – which was selected for this study to be somewhat arbitrarily fixed at 3.3. The BSA was driven by a spherical annulus-shaped sub-critical multiplier made of 20% enriched uranium and designed to have a k_{eff} of 0.98. A number of materials and BSA length were considered. The optimal BSA was found to be 51 cm long made of only lead and ${}^7\text{LiF}$, with the exception of a 1mm slab of ${}^6\text{LiF}$ at the end towards the patient, mixed in different fractions along the BSA as shown in Figure 28. Since it would be impractical to uniformly mix ${}^7\text{LiF}$ and lead, the composition of Figure 28 could be approximated by distinct layers of the two materials as shown in Figure 29.

The BSA composition of Figure 29 was used instead of the reference considered in the previous section. Additionally the alumina reflector of the BSA has been replaced by lead, because of its better reflective properties and its effectiveness in stopping the un-wanted gamma

rays. A cross sectional view of the resulting system is plotted in Figure 30. The thickness of the various layers in the SWAN-optimized BSA are shown in Table IV.

Table IV: Dimensions of the SWAN-optimized BSA, as shown in Figure 30.

Thickness of	
Pb	3.5cm
⁷ LiF	6cm
Pb	1.5cm
⁷ LiF	21cm
Pb	1cm
⁷ LiF	8cm
Pb	1cm
⁷ LiF	8cm
Pb	0.9cm
⁶ LiF	0.1cm

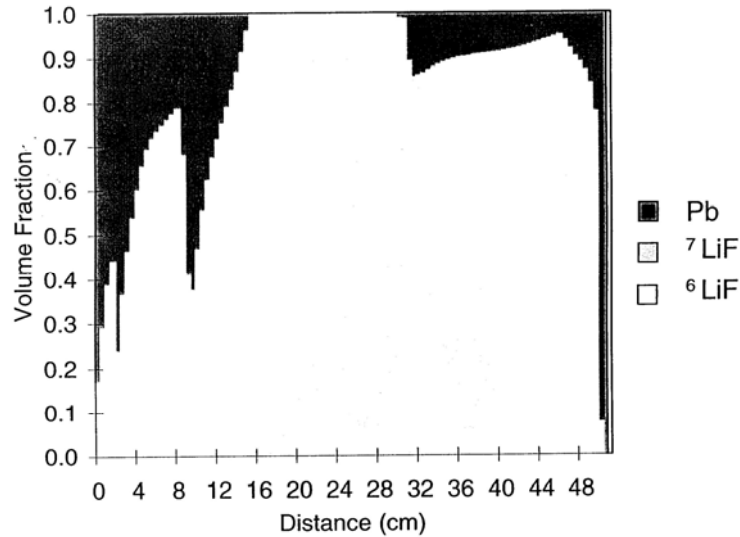


Figure 28: Optimal BSA configuration found by SWAN. The ⁶LiF is not visible, being a thin layer at the right-hand side of the assembly

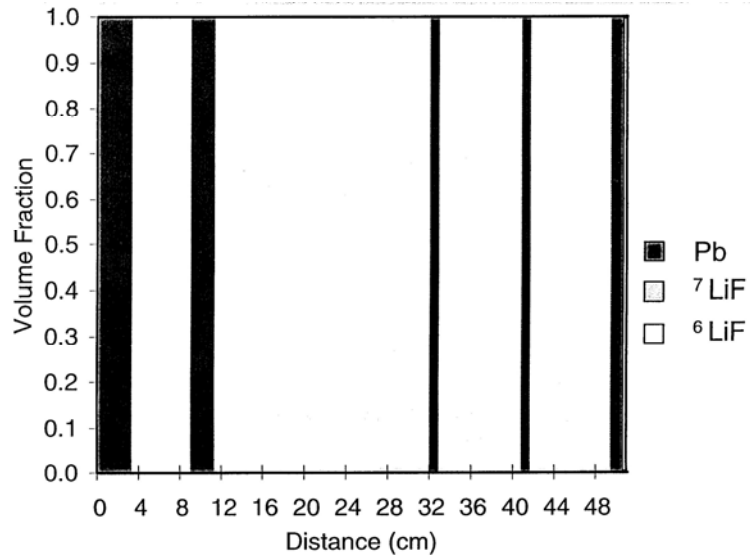


Figure 29: Approximation of the SWAN solution that is made of slabs of Pb and ${}^7\text{LiF}$. The ${}^6\text{LiF}$ is a thin layer at the right-hand side of the assembly

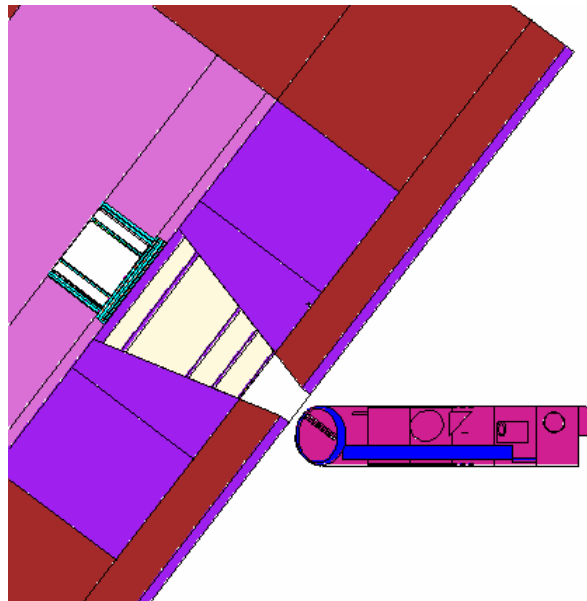


Figure 30: Cross sectional view of the BSA optimized by SWAN as it is inserted into the system; Case 2.

The results of this simulation are presented in Figure 31 to Figure 33. The maximum dose is about 43 Gy at about 2 cm depth, delivered in 7.5 hours of treatment, with a dose rate of 5.73

Gy/hours. The H/L reaches a maximum of about 4.3 at 4 cm depth and drops no lower than 2.5 as deep as 12 cm inside the head. The tumor control dose of 20 Gy is reached in the first 6.5 cm.

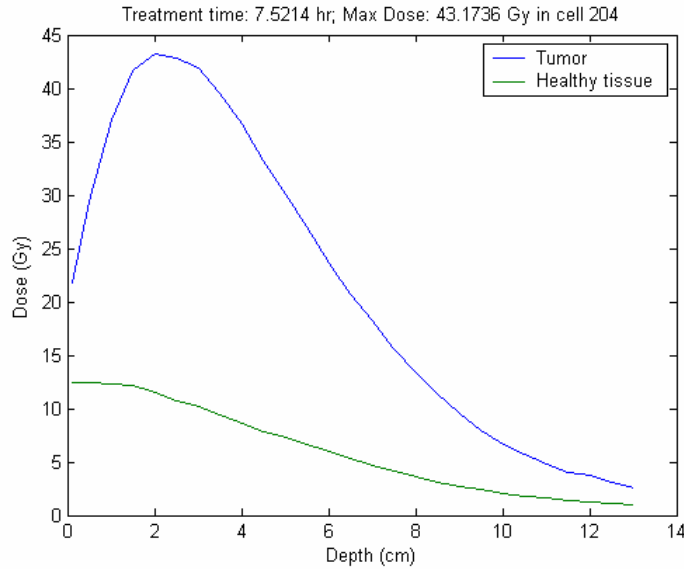


Figure 31: Total dose to the healthy tissue and to the tumor as a function of depth; Case 2

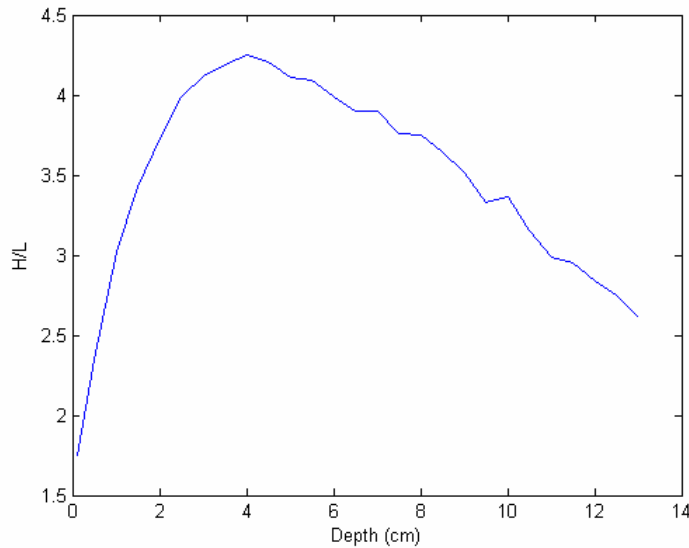


Figure 32: Tumor-to-healthy tissue dose ratio (H/L); Case 2

Figure 33 shows the components of the healthy tissue dose. The gamma component is much lower than in the reference case, due to extra amount of lead added in the BSA and in the

reflector – compare Figure 33 and Figure 26. However, the neutron component, excluding through capture in boron, is too large.

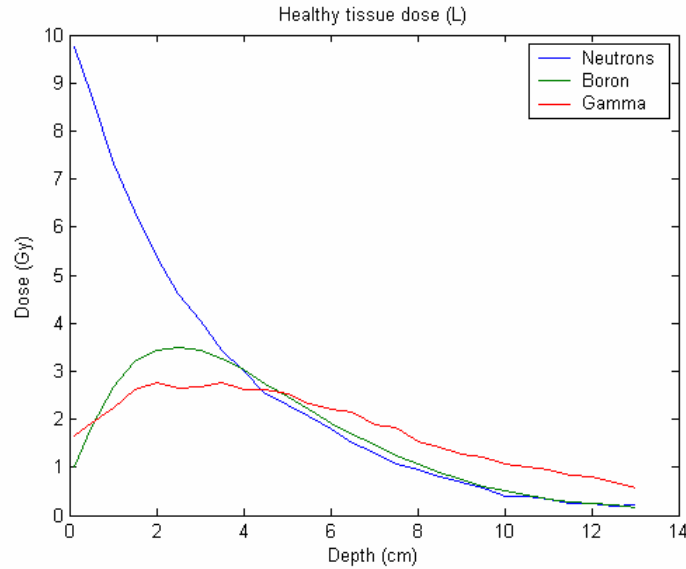


Figure 33: Components of the healthy tissue dose (L); Case 2

6.3 Case three: 1% ^6LiF added to the last 2 zones

The BSA is of an identical configuration as in the previous case but the ^7LiF in the last two zones was “doped” with 1% ^6LiF with the purpose of cutting down the thermal neutron component. A cross sectional view of the resulting system is shown in Figure 34.

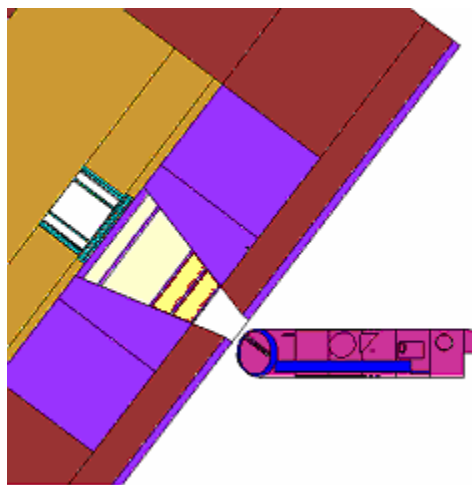


Figure 34: Cross sectional view of Case 3 system: 1% ^6LiF added to the last two BSA zones

The results for this system are presented in Figure 35 to Figure 37. The maximum dose drops to 22.22 Gy at a depth of about 2.5-3 cm, reached with an irradiation time of about 6.5 hours: the dose rate is about 3.4 Gy/hour. The neutron contribution to the healthy dose L shown in Figure 37 is not better than in Case 2 of Figure 33. This is an indirect confirmation that the high dose to the skin is due to the fast component of the neutrons spectrum.

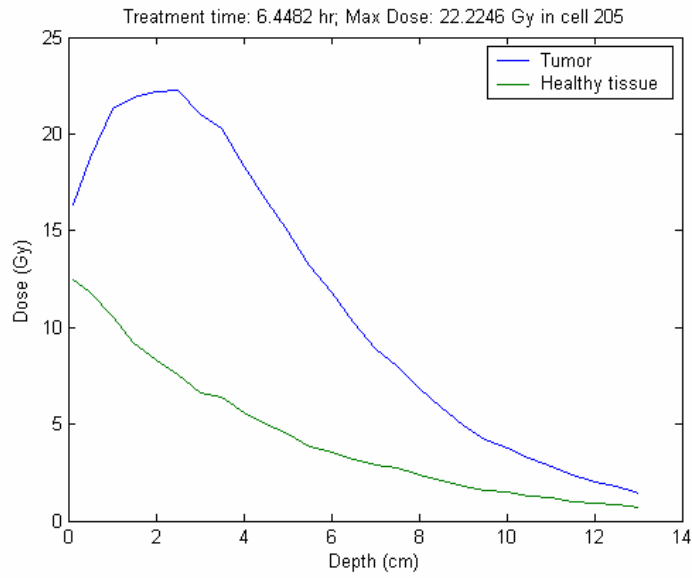


Figure 35: Total dose to the healthy tissue and to the tumor as a function of depth; Case 3

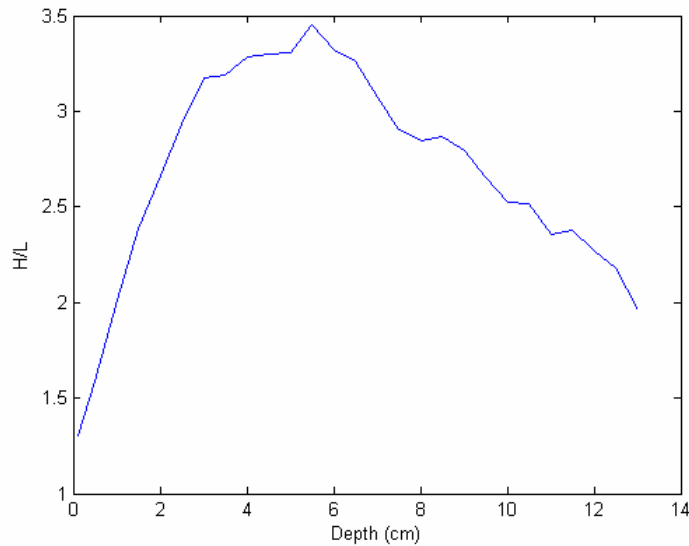


Figure 36: Tumor-to-healthy tissue dose ratio (H/L); Case 3

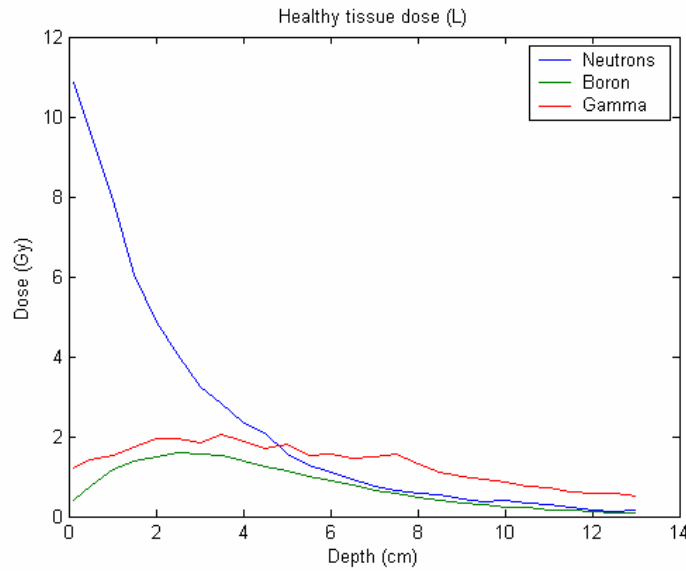


Figure 37: Components of the healthy tissue dose (L); Case 3

6.4 Case Four: SWAN BSA for D-T 14 MeV neutrons

The configuration of Case Four is the same as Case Two, but the BSA design is an approximation of an optimized solution found by SWAN [15] for 14 MeV D-T neutrons rather than for 2.45 MeV D-D neutrons. The rationale for considering this BSA is that a fission neutron can be born with up to 10 MeV – significantly higher energy than the D-D neutrons energy. A BSA optimized for 14 MeV neutrons should be more effective in slowing down the fast neutrons; the previous case indicated that the fast neutrons are primarily responsible for the relatively high skin dose.

Figure 387 shows a cross sectional view of the system considered. The 51 cm long BSA is composed of the following layers: 6 cm of lead (red in the figure), 22 cm of iron (pink), 2 cm of lead, 20 cm of ^7LiF with 1% ^6LiF (yellow), 0.9 cm of lead and finally 1 cm of ^6LiF .

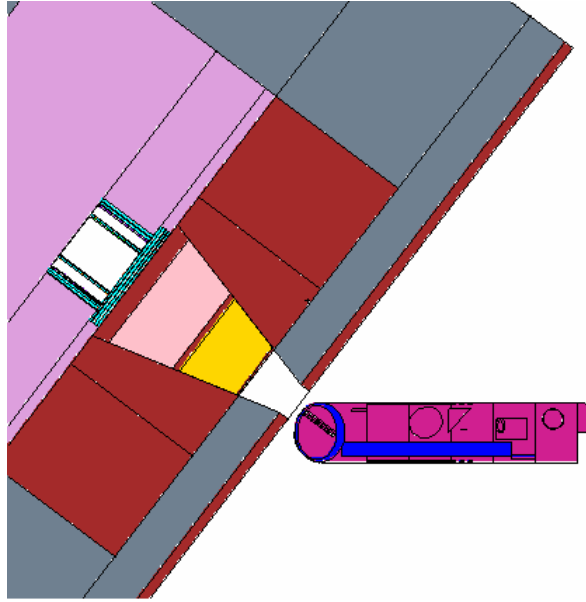


Figure 38: Cross sectional view of the system in Case 4

The results of this simulation are presented in Figure 39 to Figure 41. Figure 39 shows that the maximum allowable dose to the healthy tissue (12.5 Gy) is reached before the tumor control dose of 20 Gy is reached anywhere. Therefore this configuration of the BSA will not give any therapeutic benefit. The biggest contribution to the healthy dose (L) comes from the neutron component, which in this case is even bigger than the dose to the tumor due the boron in the shallow part of the brain (see Figure 41). Due to poor performance this case was not pursued.

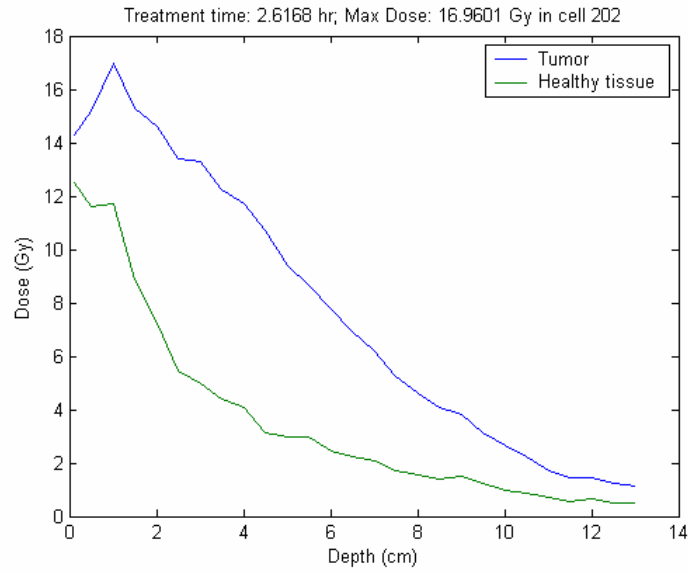


Figure 39: Total dose to the healthy tissue and to the tumor as a function of depth; Case 4

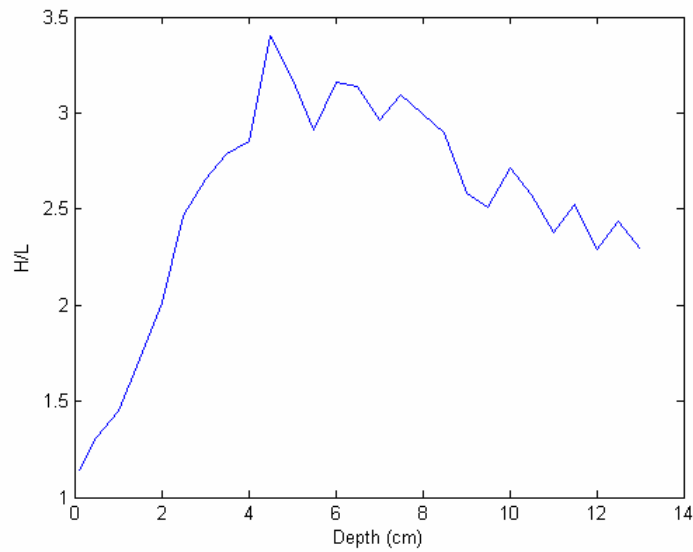


Figure 40: Tumor-to-healthy tissue dose ratio (H/L); Case 4

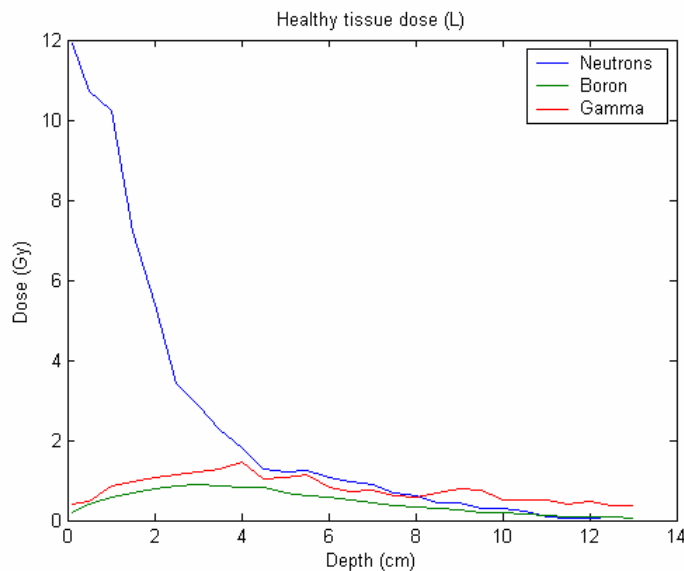


Figure 41: Components of the healthy tissue dose (L); Case 4

6.5 Case Five: Like Case 2 using Flualtal in the last two zones

This case has the same configuration as case two, but Flualtal⁵ replaces ⁷LiF in the last two zones of the BSA to try to cut down the fast neutron component, which in case 2 gave the highest contribution to the dose to the healthy tissue in the skin and the skull: a cross sectional view of this system is shown in Figure 42. Flualtal is chosen because, as shown in Figure 43, the aluminum contained in this material features relatively high scattering cross section above ~30 KeV; it is higher than that of ⁷Li and higher than the cross section below ~30 KeV.

The results of this simulation are plotted in Figure 44 to Figure 46. The maximum dose of 40.7 Gy is reached in an irradiation time of about 5 hours at 2 cm depth: the peak dose rate is about 8.14 Gy/hour. However, Figure 46 shows that the fast neutron component is still responsible for most of the skin dose.

⁵ Flualtal: Al/AIF₃ (40%/60%)

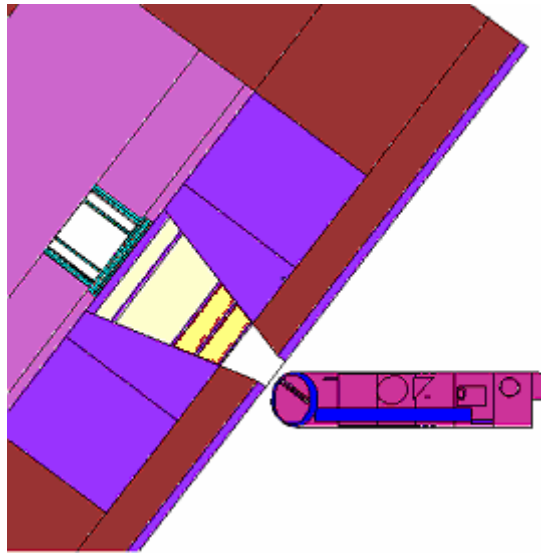


Figure 42: Cross sectional view of the system in Case 5

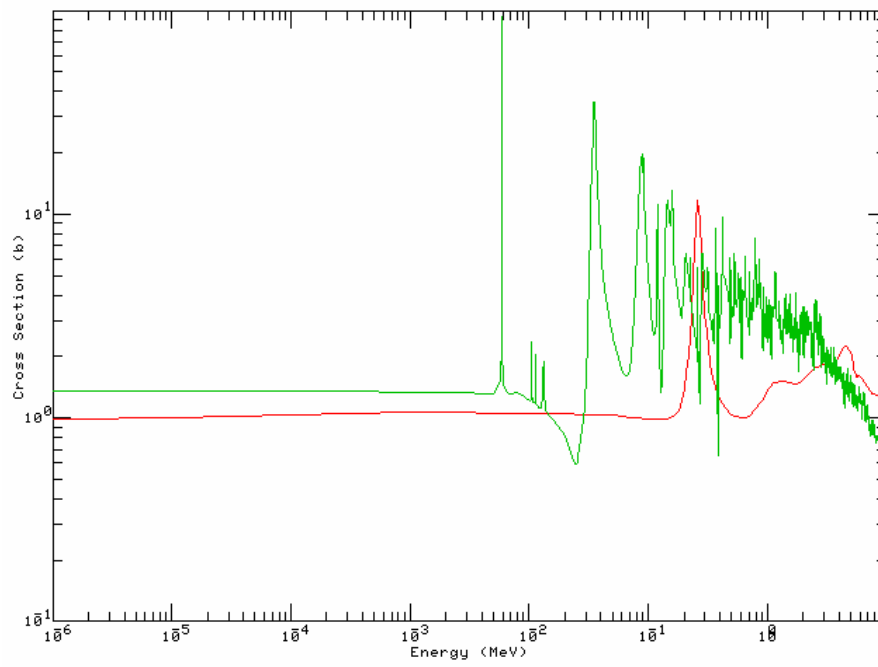


Figure 43: Epithermal and fast scattering cross sections of aluminum (green) and of ^7Li (red).

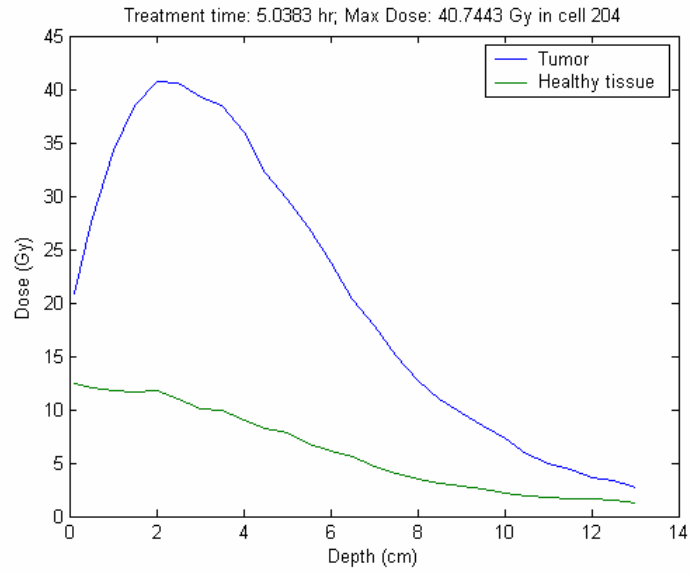


Figure 44: Total dose to the healthy tissue and to the tumor as a function of depth; Case 5

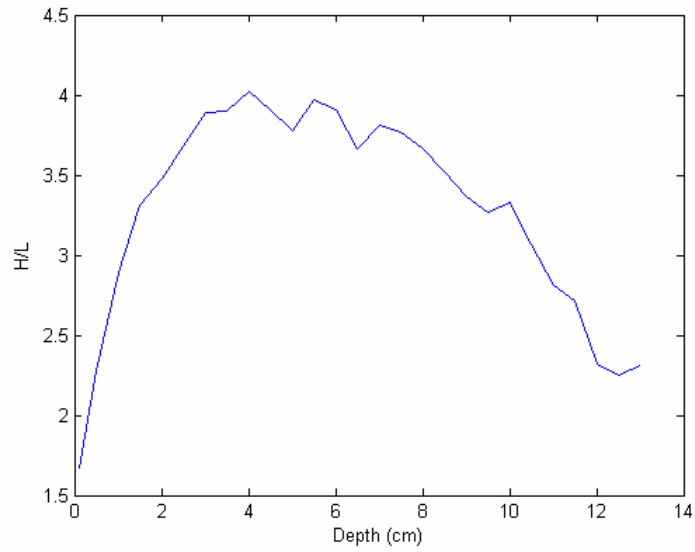


Figure 45: Tumor-to-healthy tissue dose ratio (H/L); Case 5

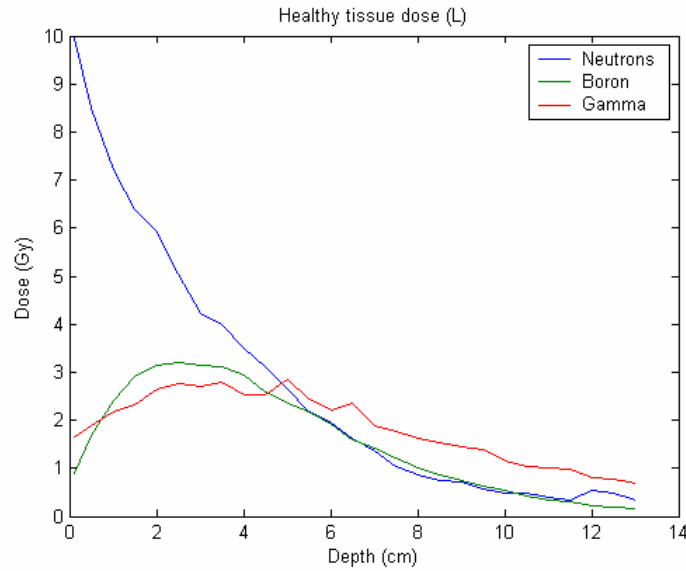


Figure 46: Components of the healthy tissue dose (L); Case 5

6.6 Case Six: Concentrating Pb in the last region

The purpose of this case is to investigate if and to what extent the particular Pb distribution in the BSA calculated by SWAN is relevant for the superior performance of the SWAN-optimized design. This investigation is done by making the thickness of the last Pb layer equal the sum of the three lead layers in the BSA of Case 2. Figure 47 shows a cross sectional view of this system.

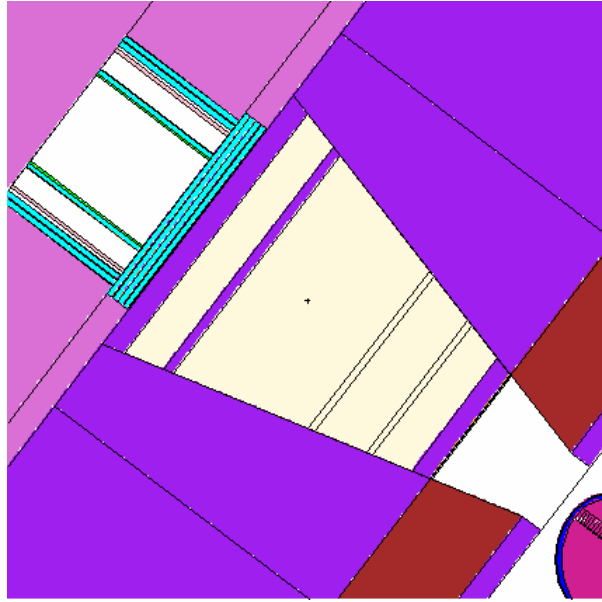


Figure 47: Cross sectional view of the system in Case 6

The results of this simulation are presented in Figure 48 to Figure 50. The maximum dose of about 44.2 Gy at 3 cm depth is delivered with an irradiation time of about 8 hours. The dose rate is 5.5 Gy/hour. The overall performance of this system is similar to that of the reference design of SWAN (Case 2), so it is concluded that the order of the Pb slabs in the central and end part of the BSA does not appear to be important. The Pb near the SCM is expected to contribute to the slowing down of the energetic neutrons via inelastic and $(n,2n)$ reactions.

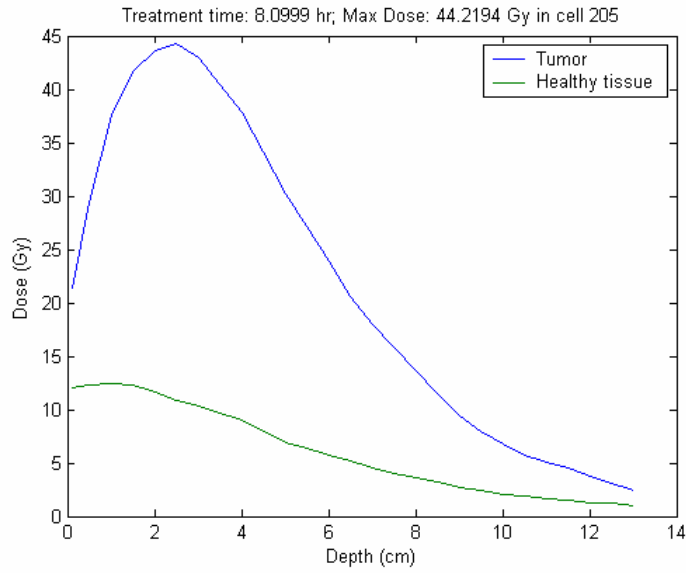


Figure 48: Total dose to the healthy tissue and to the tumor as a function of depth; Case 6

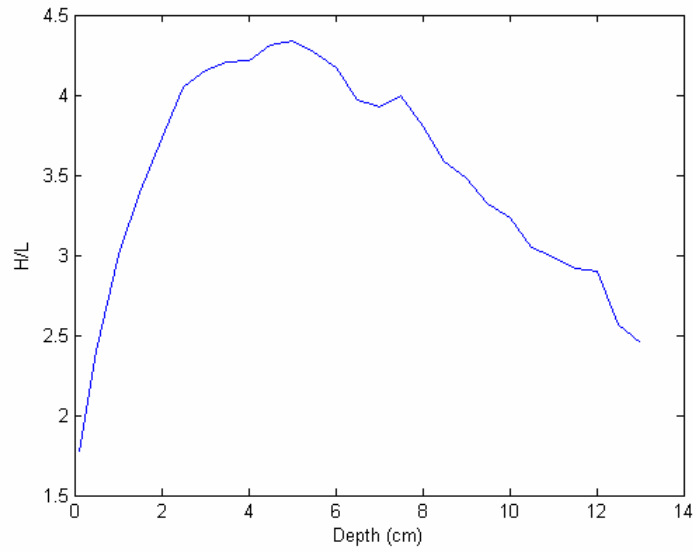


Figure 49: Tumor-to-healthy tissue dose ratio (H/L); Case 6

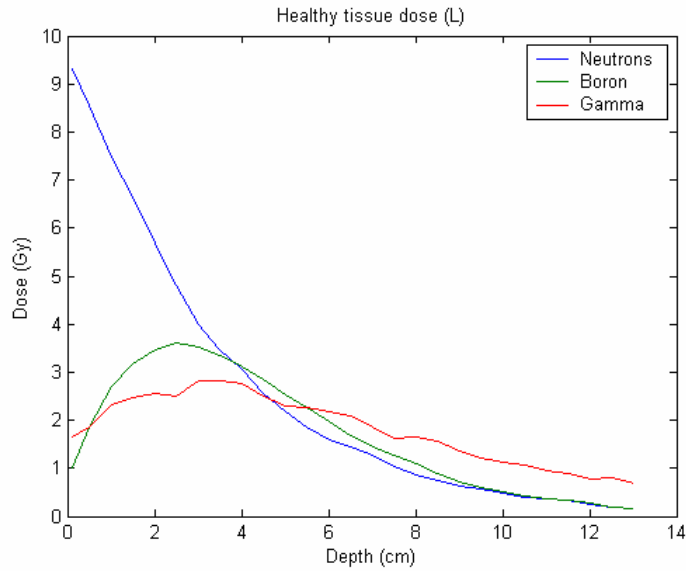


Figure 50: Components of the healthy tissue dose (L); Case 6

6.7 Case Seven: Lead is eliminated from the last three layers

The purpose of this case is to investigate whether the substantial amount of lead at the end of the BSA as designed by SWAN is useful. This investigation was done by replacing all the lead from the three layers beyond the center of the BSA by ${}^7\text{LiF}$. Everything else is identical to the configuration of Case 2 (reference SWAN design). Figure 51 shows a cross sectional view of the resulting system.

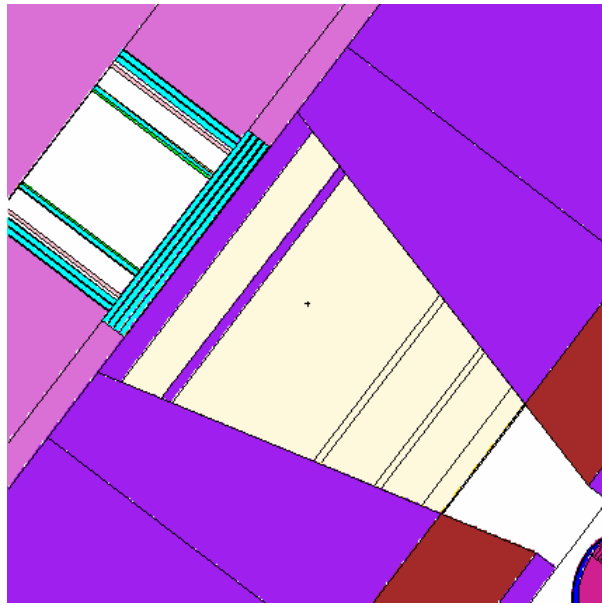


Figure 51: Cross sectional view of the system in Case 7

The results of this simulation are presented in Figure 52 to Figure 54. The maximum dose of 46 Gy, at about 2.5 cm inside the brain, is reached after an irradiation of about 7.8 hours. The dose rate is about 5.9 Gy/hour. The tumor control dose of 20 Gy is reached in the first 6.5 cm depth.

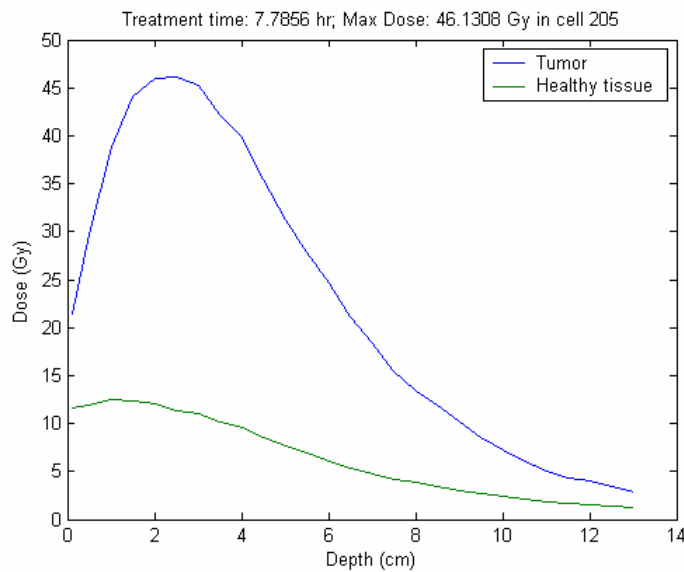


Figure 52: Total dose to the healthy tissue and to the tumor as a function of depth; Case 7

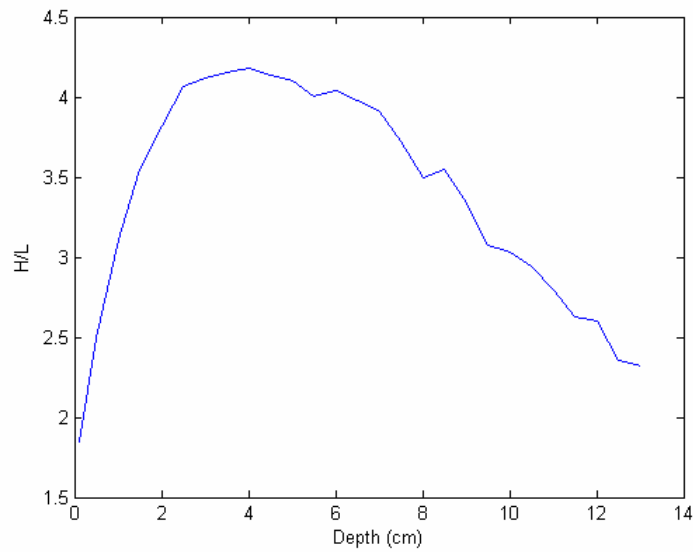


Figure 53: Tumor-to-healthy tissue dose ratio (H/L); Case 7

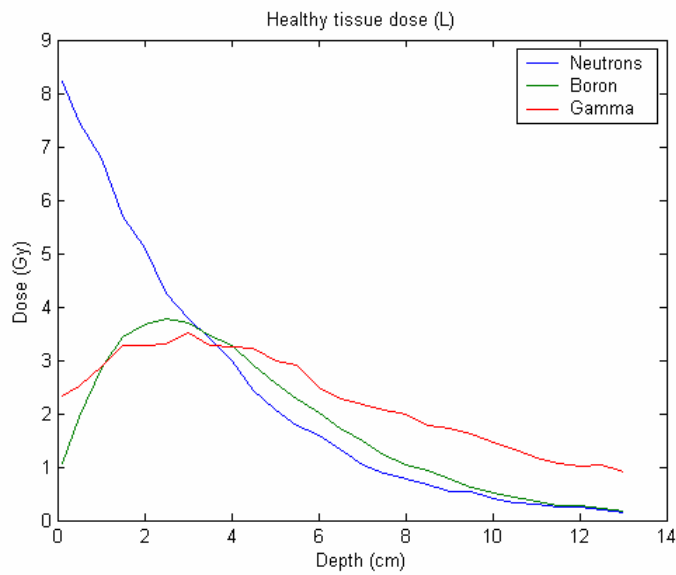


Figure 54: Components of the healthy tissue dose (L); Case 7

It is observed that the substitution of ^7LiF for Pb did not noticeably increase the Gamma-to-Boron dose components but did reduce somewhat the fast-to-boron dose components ratio as compared to the SWAN reference case (Figure 32). It is concluded that Pb is not needed in the central and end parts of the BSA.

6.8 Case Eight: Fluental added to the last part of the BSA

The purpose of Case eight is to investigate whether a reduction in the fast neutron contribution to L can be achieved by substituting Fluental for ^7LiF in the last part of the BSA. Everything else is left as in Case 2. The resulting geometry is shown in Figure 554.

The results of this system simulation are presented in Figure 55 to Figure 58. The maximum dose of 40 Gy, at about 3 cm depth, is reached in 4.5 hours. This is a substantially shorter treatment time than of any previous case so far due to a high dose rate of 8.89 Gy/hour. The tumor control dose of 20 Gy is reached in the first 6 cm depth. Figure 58 shows that the fast neutron dose is still the dominant contributor to the healthy tissue dose.

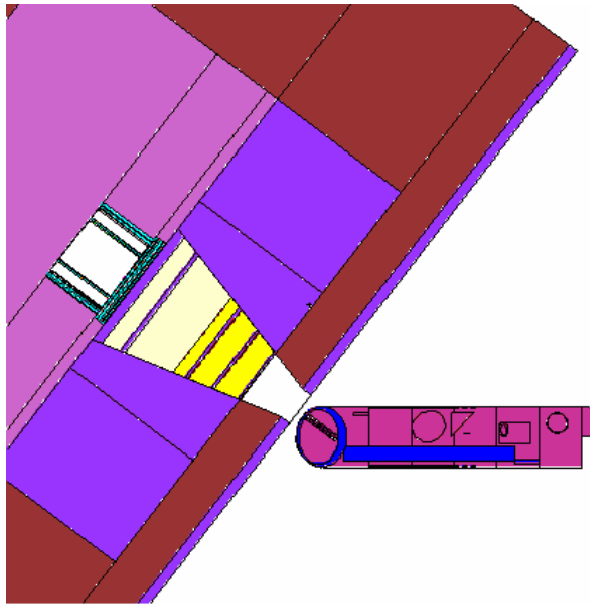


Figure 55: Cross sectional view of the system in Case 8

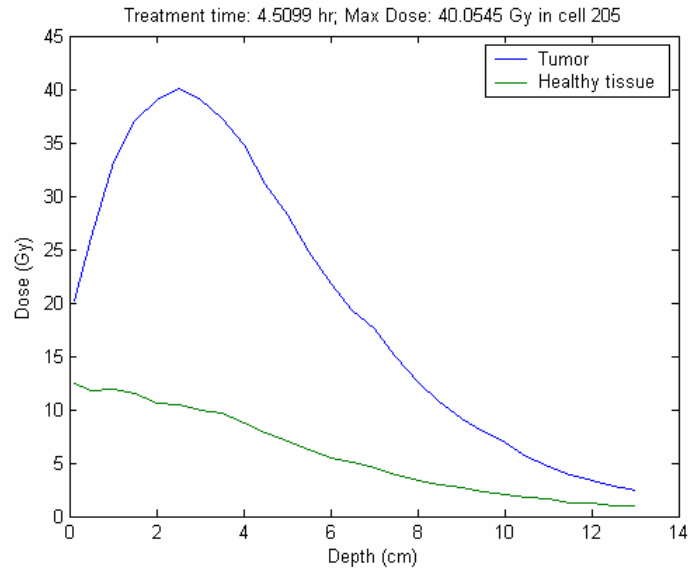


Figure 56: Total dose to the healthy tissue and to the tumor as a function of depth; Case 8

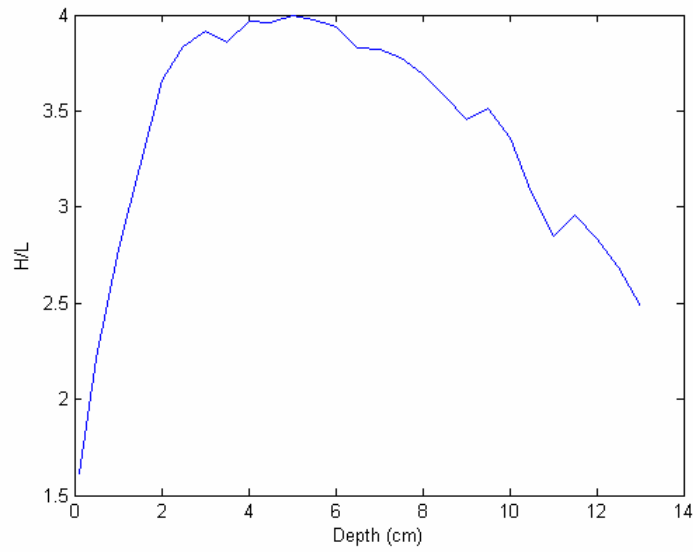


Figure 57: Tumor-to-healthy tissue dose ratio (H/L); Case 8

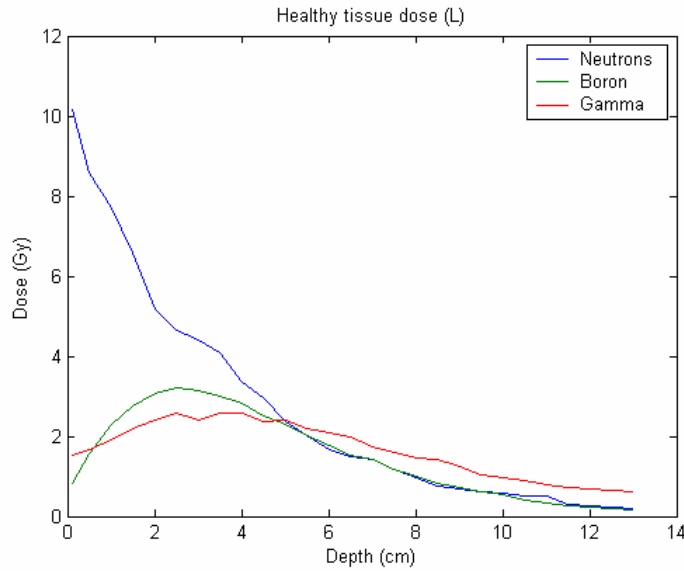


Figure 58: Components of the healthy tissue dose (L); Case 8

6.9 Case Nine: Like Case One with Pb layer added at the exit of the BSA

The purpose of this case is to find out whether a thicker Pb filter at the end of the BSA can substantially reduce the contribution of the gamma rays to the healthy tissue dose (L). A cross sectional view of this system is shown in Figure 59 while Figure 60 shows an enlargement of the end part of the BSA.

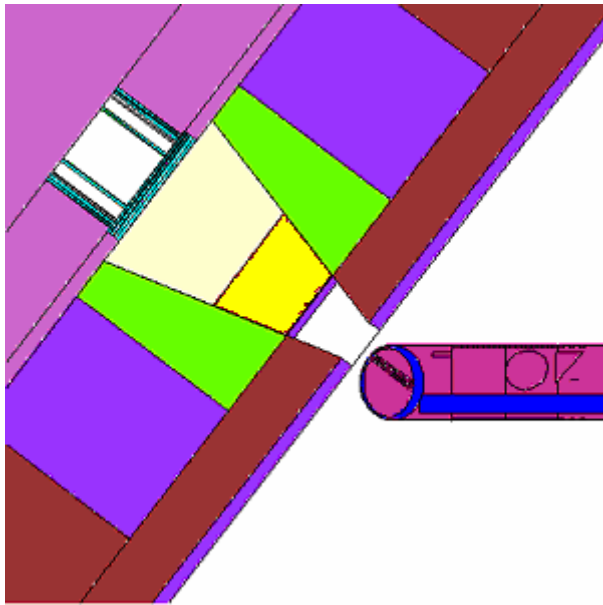


Figure 59: Cross sectional view of the system in Case 9

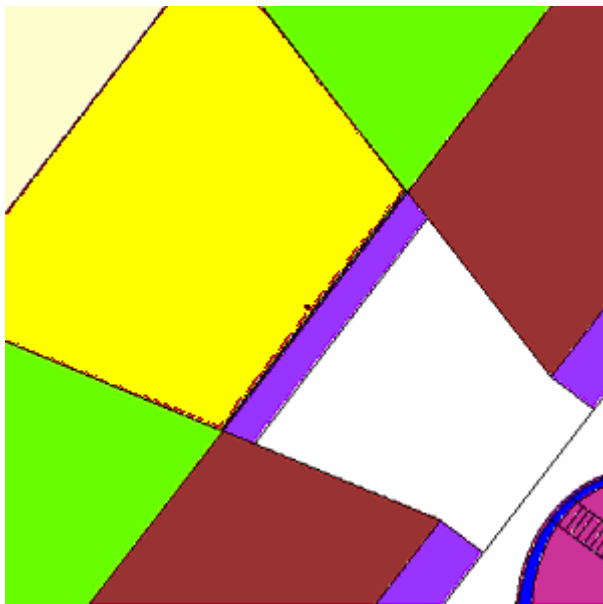


Figure 60: Enlarged end part of Case 9 BSA showing the thick Pb layer added at the exit BSA

The lead thickness is determined so as to cut down the gamma component to about half the value of the reference case. Figure 60 shows the absorption (in dark blue) and attenuation (in pink) coefficients of lead as a function of the gamma ray energy. The light blue curve gives the thickness necessary to cut the gamma current by a factor of 2.5, neglecting the buildup factor. A lead thickness of 2 cm was chosen for analysis.

The results obtained are plotted in Figure 62 to Figure 64. The maximum dose of 36.4 Gy is reached with an exposure time of little less than 9 hours at a depth of about 3 cm. The dose rate is 4 Gy/hour. Figure 643 shows that the lead end layer is not very effective in cutting the gamma dose substantially, indicating that a substantial contribution to the gamma dose comes from the sided of the collimator.

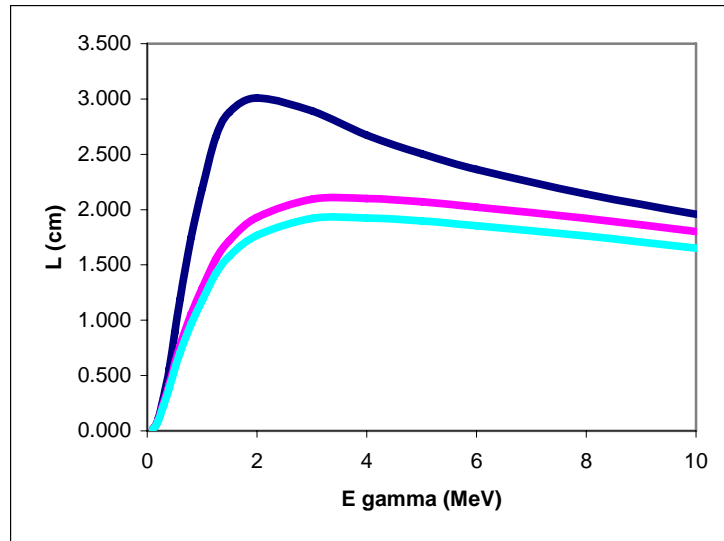


Figure 61: Absorption (dark blue) and attenuation coefficient (pink) of lead for gamma rays: in light blue the thickness necessary to cut the gamma component by a factor of 2.5, neglecting the buildup factor.

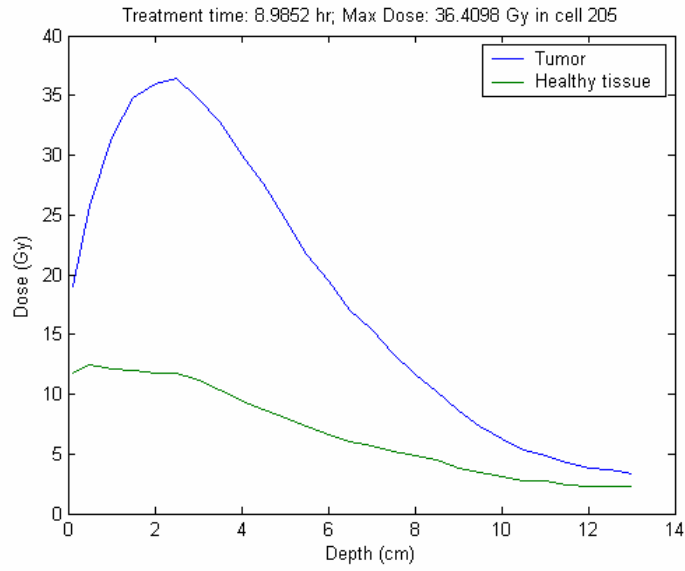


Figure 62: Total dose to the healthy tissue and to the tumor as a function of depth; Case 9

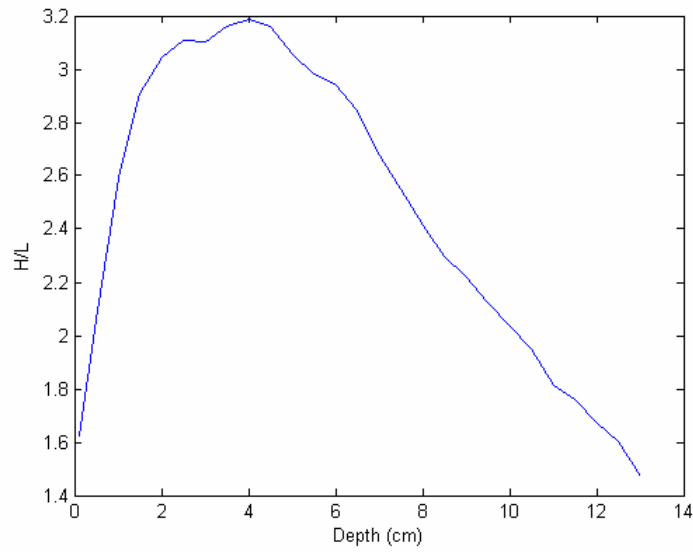


Figure 63 Tumor-to-healthy tissue dose ratio (H/L); Case 9

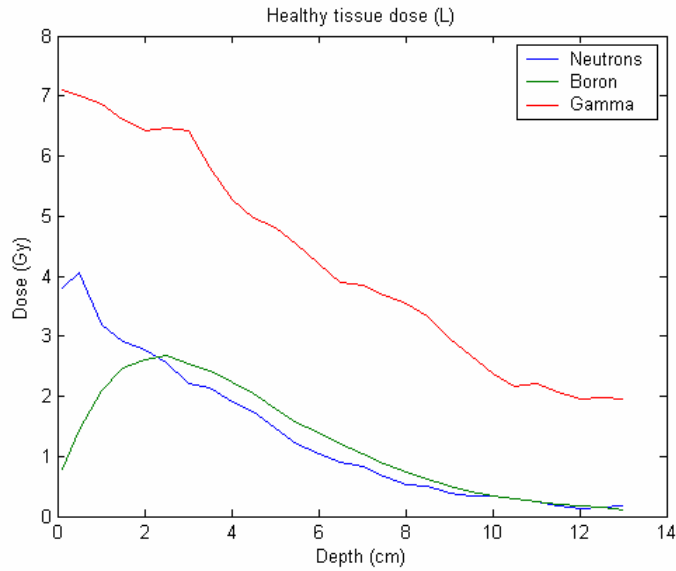


Figure 64: Components of the healthy tissue dose (L); Case 9

6.10 Case Ten: Like Case 9 but with a Pb collar added

This case is designed to check the above hypothesis by adding a “collar” of lead around the collimator walls as shown in Figure 65. The collar thickness is 2.1 cm the same as the Pb layer thickness at the exit of the BSA.

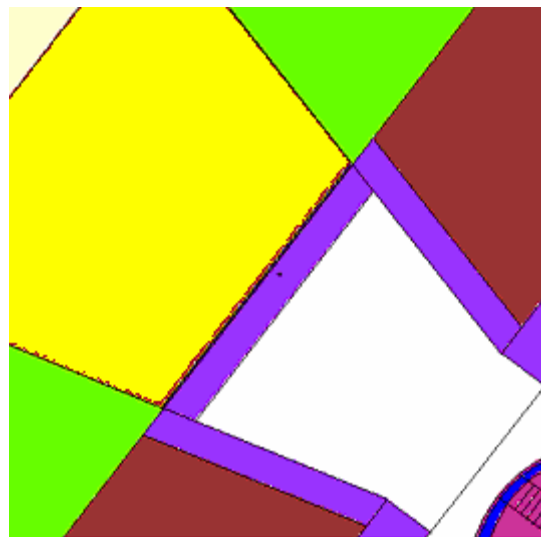


Figure 65: Cross sectional view of the end part of the system in Case 10

Figure 66 to Figure 68 give the results for this case: the maximum dose of 47.5 Gy at about 2-2.5 cm depth is reached with an exposure time of 10.3 hours. The dose rate is 4.6 Gy/hour, which is a substantial improvement compared to Case nine without the collar. Comparing Figure 68 and Figure 64 it is found that, as expected, the addition of lead collar substantially reduces the gamma dose; its contribution to the skin dose is now comparable to that of the fast neutrons.

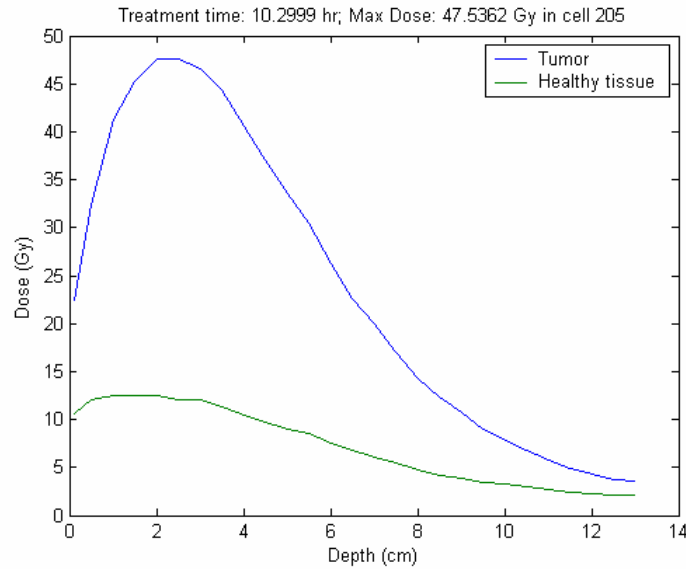


Figure 66: Total dose to the healthy tissue and to the tumor as a function of depth; Case 10

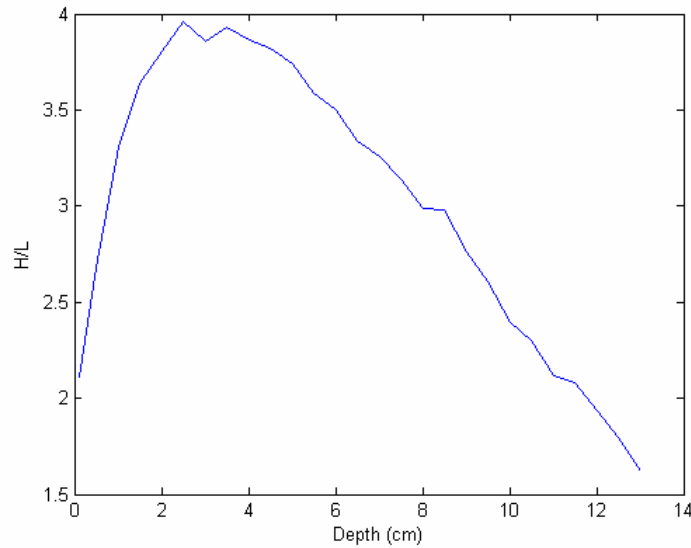


Figure 67: Tumor-to-healthy tissue dose ratio (H/L); Case 10

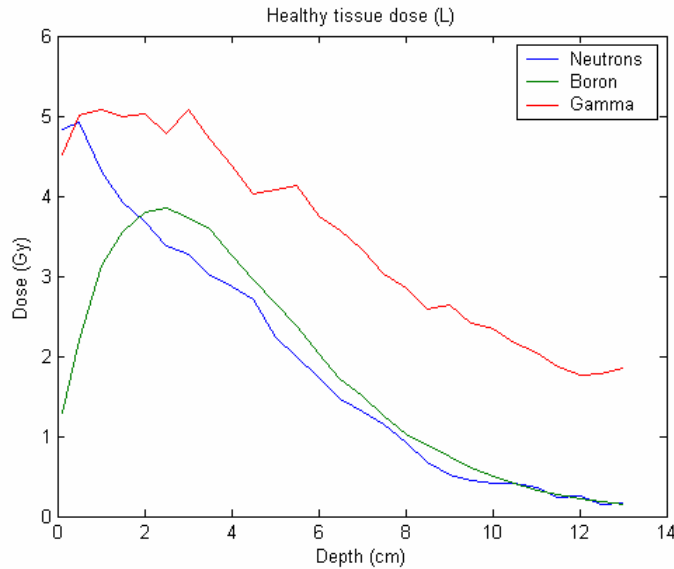


Figure 68: Components of the healthy tissue dose (L); Case 10

6.11 Case Eleven: Like Case Eight with a lead “collar”

Having found (Case Ten) that the lead collar is very effective in reducing the gamma dose, such a collar is added to Case Eight system that gave the best performance so far. A cross sectional view of the resulting system is shown in Figure 69 and Figure 69. The results are presented in Figure 71 to Figure 73. The maximum dose of 34.7 Gy at about 3 cm depth is achieved with an exposure of about 3.43 hours. The dose rate is 10.12 Gy/hour – the largest obtained so far, and the tumor control dose is achieved everywhere up to 6 cm depth. As in Case 8, the fast neutron component (Figure 73) is the major contributor to the skin dose.

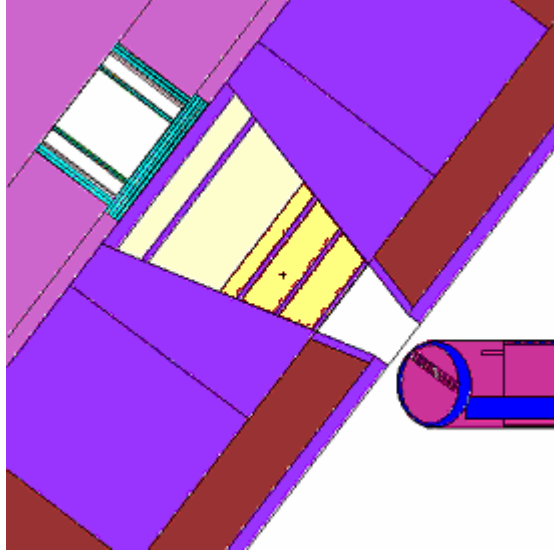


Figure 69: Cross sectional view of the system in Case 11



Figure 70: Cross sectional view of the collimator region of Case 11 system

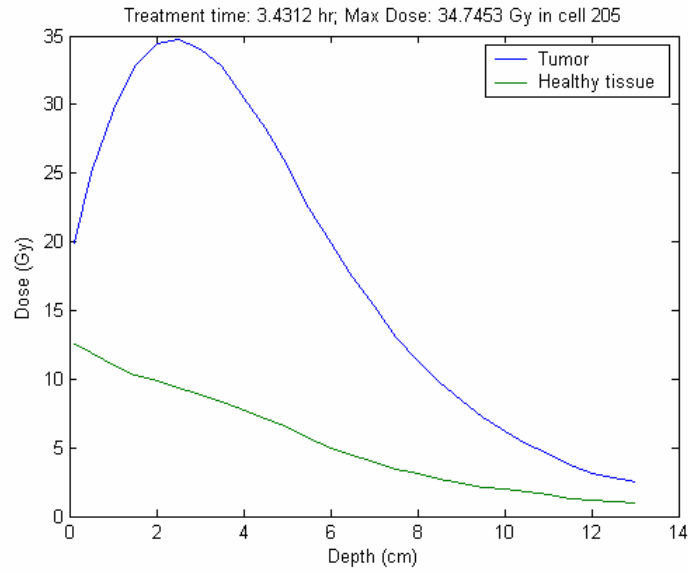


Figure 71: Total dose to the healthy tissue and to the tumor as a function of depth; Case 11

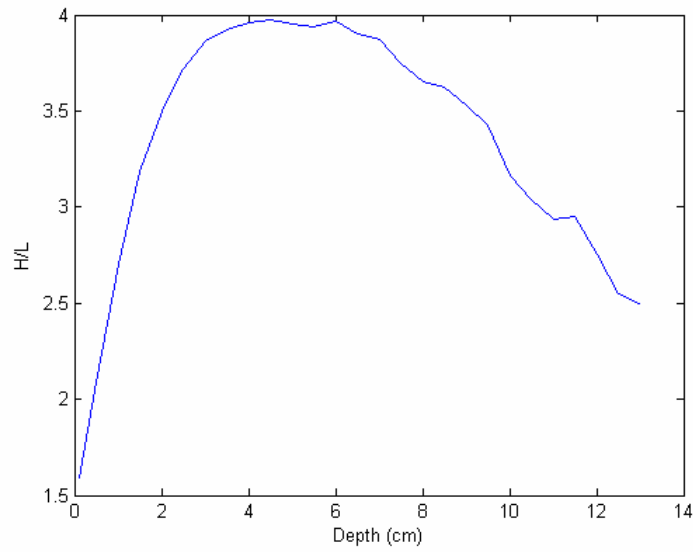


Figure 72: Tumor-to-healthy tissue dose ratio (H/L); Case 11

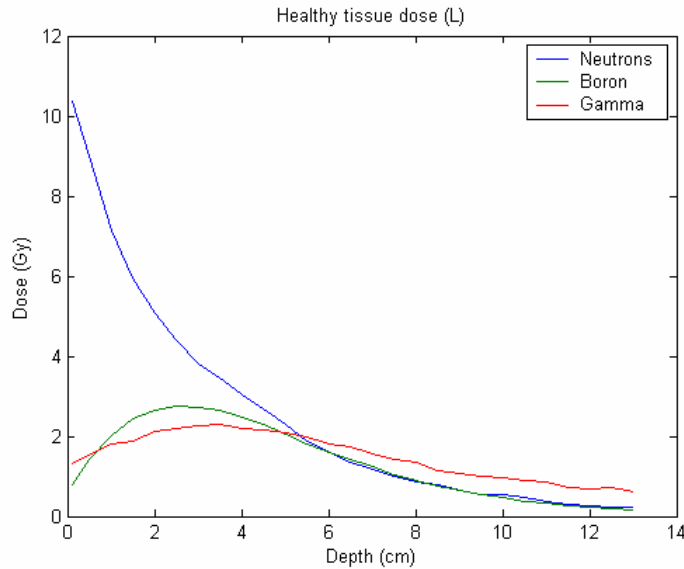


Figure 73: Components of the healthy tissue dose (L); Case 11

6.12 Case Twelve: Like Case One but ${}^6\text{LiF}$ extended up to the SCM

The purpose of Case Twelve is to find out whether an extension of the 0.25 mm layer of ${}^6\text{LiF}$ between the BSA and the reflector is responsible for the large difference in the gamma and neutron dose components between Cases One and Case Two. This layer was originally aimed at reducing the flux of thermal neutrons that reach the reflector and generate capture gamma rays. In the original Goff's design this layer extends on the entire side of the BSA up to the SCM. In Case Twelve, as in Case One, the ${}^6\text{LiF}$ is eliminated from the 30 cm closer to the SCM so as to minimize the ${}^6\text{Li}$ effect on the SCM k_{eff} . The resulting design considered is shown in Figure 743 and in Figure 754 in which the thin ${}^6\text{LiF}$ layer is shown in yellow.

The simulation results of this system are summarized in Figure 765 and Figure 7776. The exposure time was not properly evaluated because the size of the SCM was not adjusted to compensate for the poisoning effect of the added ${}^6\text{LiF}$. As a result k_{eff} is lower than 0.98 and the exposure time is increased. Nevertheless, Figure 77 shows that, although the gamma component is somewhat smaller than in the reference system (Figure 25), it is still the dominant, indicating that the extra ${}^6\text{LiF}$ is not responsible for the substantial cut in the gamma dose component experienced in Case 2.

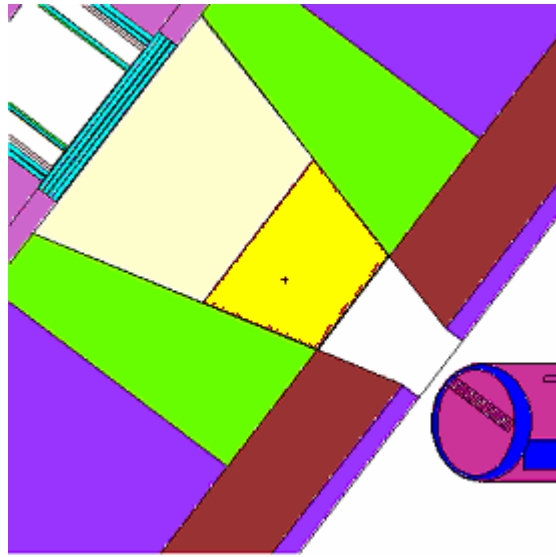


Figure 74: Cross sectional view of the system of Case 12

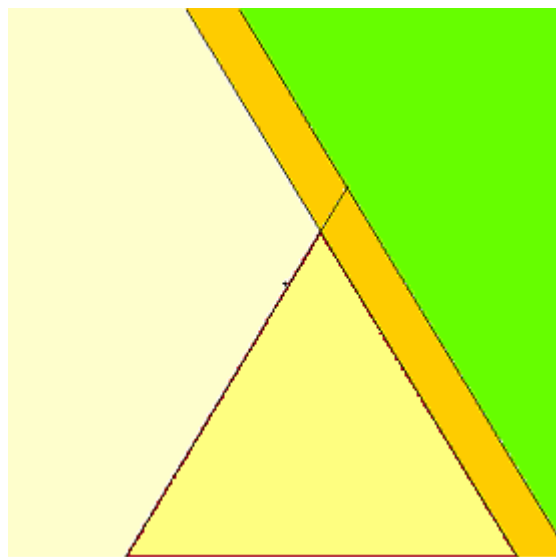


Figure 75: Section of Case 12 BSA showing the 0.25 mm ${}^6\text{LiF}$ layer (in yellow) between the BSA (in white and red) and the alumina reflector (in green).

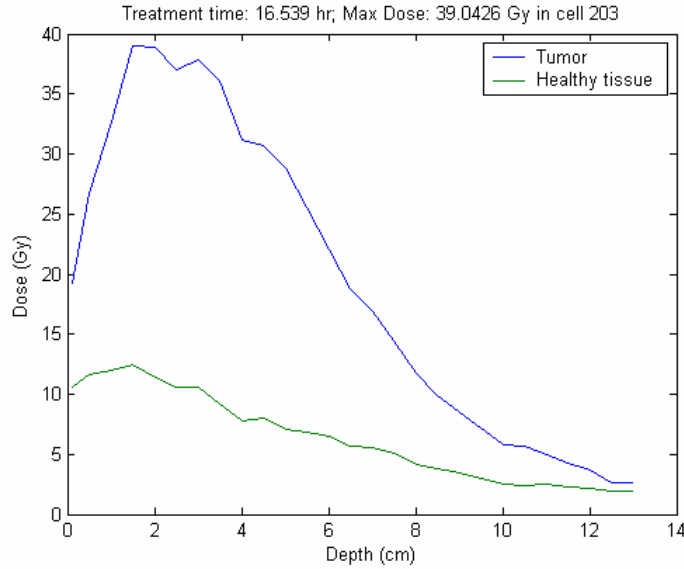


Figure 76: Total dose to the healthy tissue and to the tumor as a function of depth; Case 12.

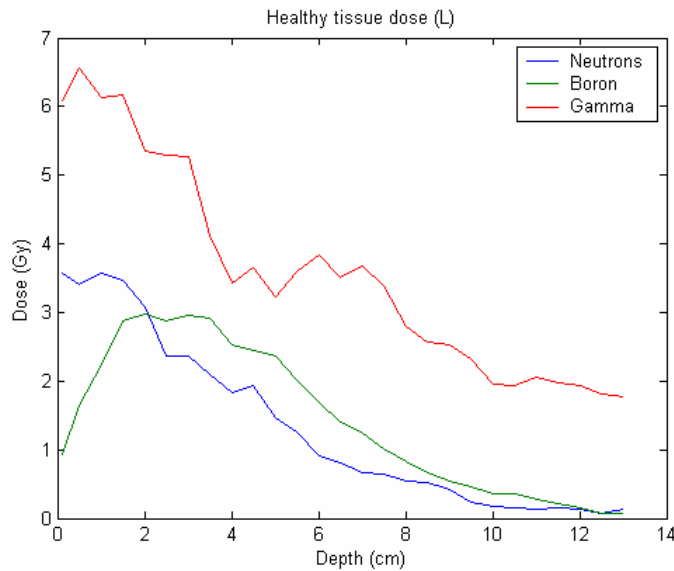


Figure 77: Components of the healthy tissue dose (L); Case 12

6.13 Case Thirteen: BeO instead of lead reflector for the BSA

The purpose of this case is to evaluate the extent to which the fast neutron component contribution can be reduced by replacing the lead reflector of the BSA with BeO. The design is the same as of Case 11. It was found that, due to the better neutron reflection properties of BeO, the size of the SCM could be substantially reduced. Two different approaches were examined for

maintaining $k_{eff}=0.98$: in Case Thirteen one vertical fuel plate was removed and the radius of the remaining fuel plates was reduced from 17.0 cm to 16.5 cm. The resulting system is shown in Figure 78. In Case Fourteen the four vertical fuel plates were maintained and their radius was reduced. The simulation results are plotted in Figure 79 to Figure 81.

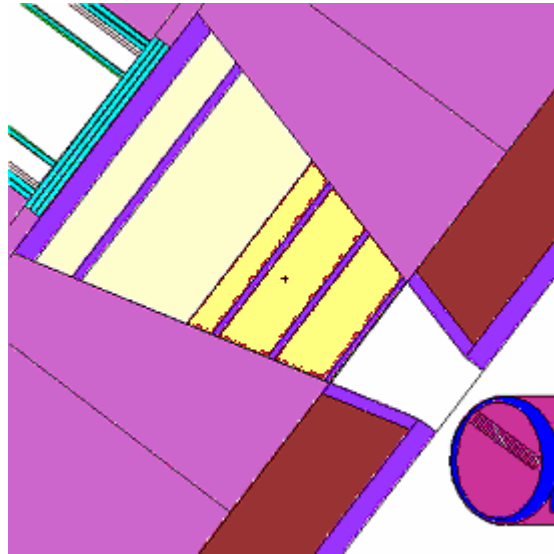


Figure 78: Cross sectional view of Case Thirteen system; the BeO reflector is in violet

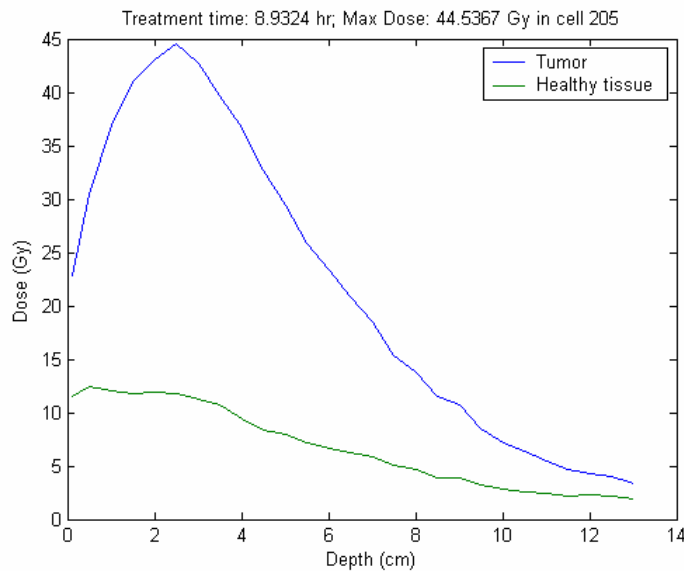


Figure 79: Total dose to the healthy tissue and to the tumor as a function of depth; Case 13

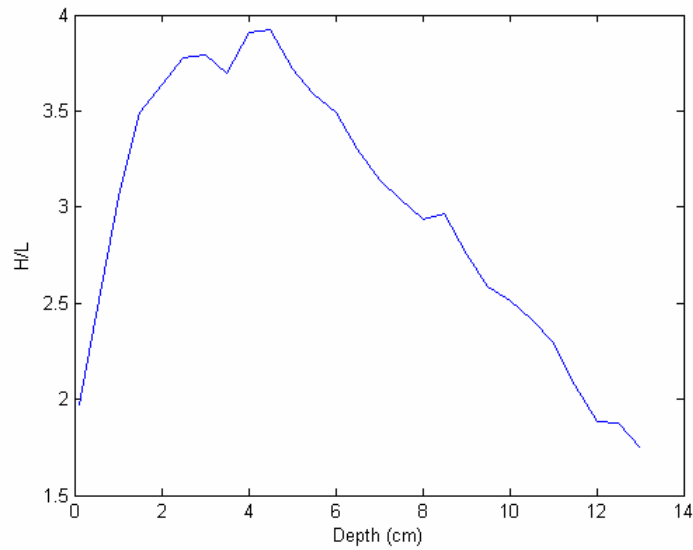


Figure 80: Tumor-to-healthy tissue dose ratio (H/L); Case 13

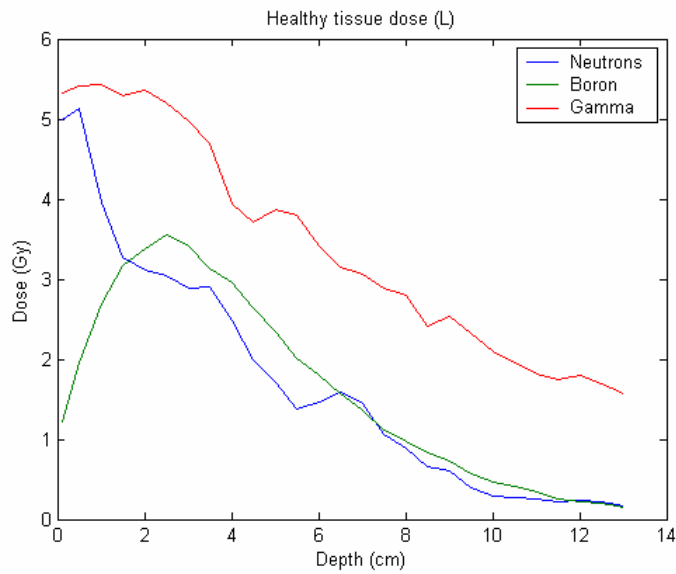


Figure 81: Components of the healthy tissue dose (L); Case 13

The maximum tumor dose of 44.5 Gy is reached at about 2.5 cm depth with an irradiation of 8.9 hours. The dose rate is 4.5 Gy/hour. The fast neutron component is substantially reduced but the performance measured by the dose rate is drastically worse than in Case 11.

6.14 Case Fourteen: BeO instead of Alumina reflector for the BSA; Part II

This case is similar to Case Thirteen with the exception that the four vertical fuel plates of the SMC are maintained but their radius is reduced to 13.91 cm to meet the $k_{\text{eff}}=0.98$ constraint. The resulting system layout is shown in Figure 82. The results obtained for this system are shown in Figure 83 to Figure 85.

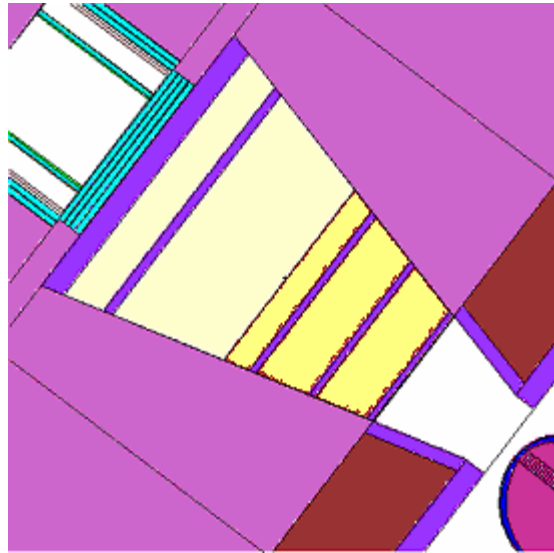


Figure 82: Cross sectional view of the system in Case 14

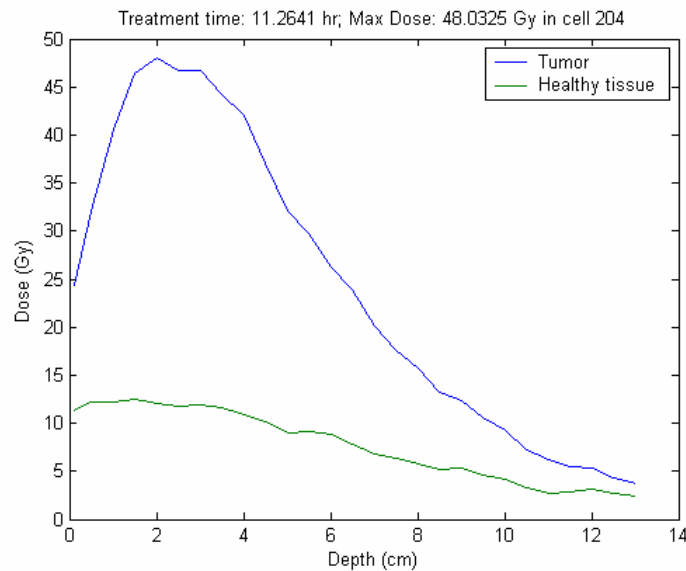


Figure 83: Total dose to the healthy tissue and to the tumor as a function of depth; Case 14

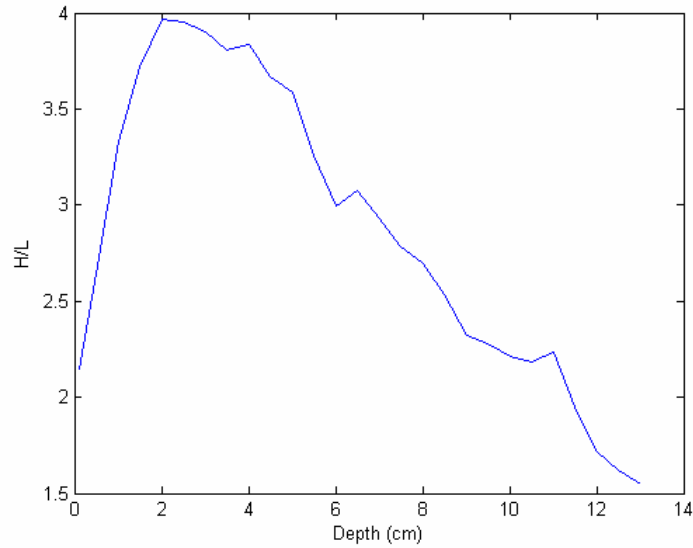


Figure 84: Tumor-to-healthy tissue dose ratio (H/L); Case 14

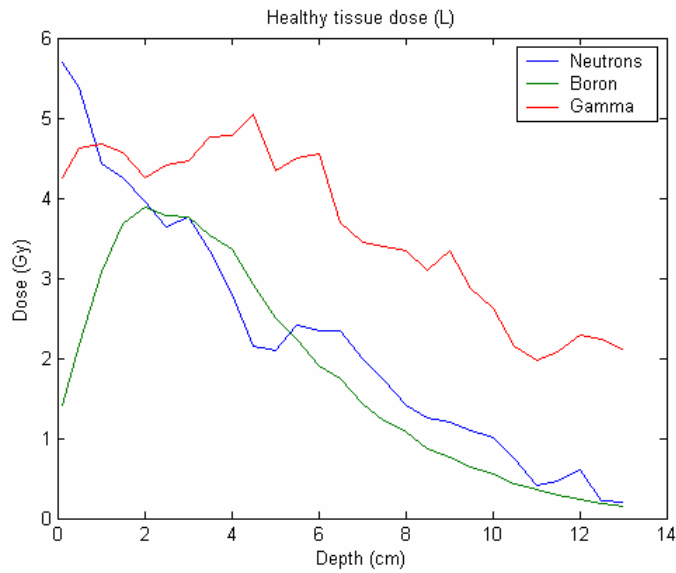


Figure 85: Components of the healthy tissue dose (L); Case 14

The maximum dose of 48 Gy is reached at about 2 cm depth with an irradiation time of about 11.26 hours. The dose rate is 4.3 Gy/hour. The performance of this system is even worse than that of Case Thirteen. However, the gammas and neutrons contribution to the skin dose is well balanced.

6.15 Case Fifteen: No lead in the BSA

The purpose of this case is to investigate the role of the second lead slab on the relative contribution of the gamma and neutron components to the dose. For this purpose only the lead slab closest to the SCM is kept. The thickness of the fluential layer is the same as in the reference BSA (Case One). The BSA reflector is made of lead. The collimator configuration is the same as in Case Ten. Figure 86 shows the resulting system. The results are shown in Figure 87 to Figure 89.

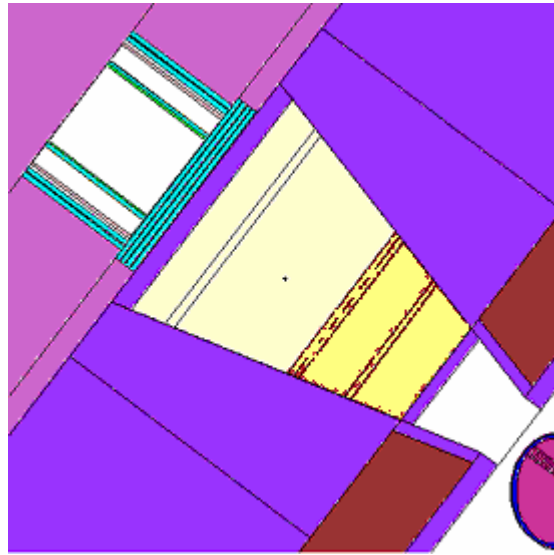


Figure 86: Cross sectional view of Case 15 system

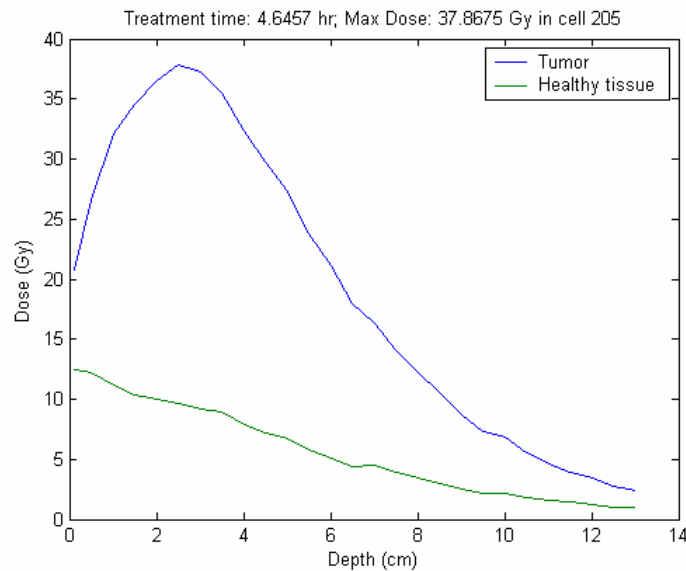


Figure 87: Total dose to the healthy tissue and to the tumor as a function of depth; Case 15

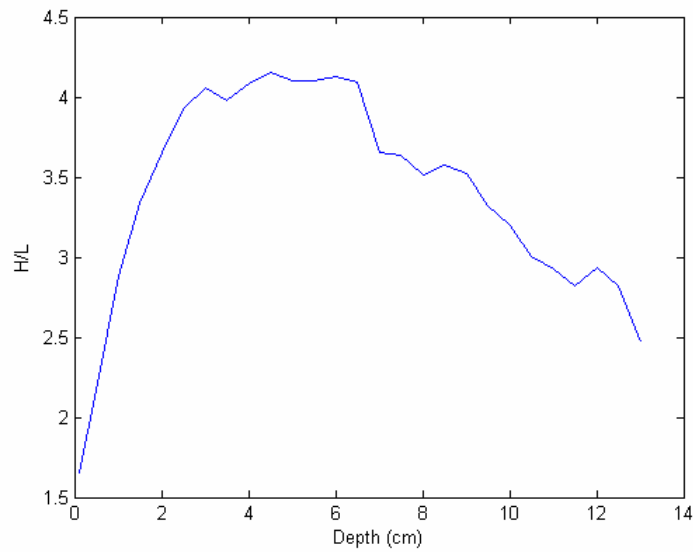


Figure 88: H/L (Tumor/healthy dose); Case 15

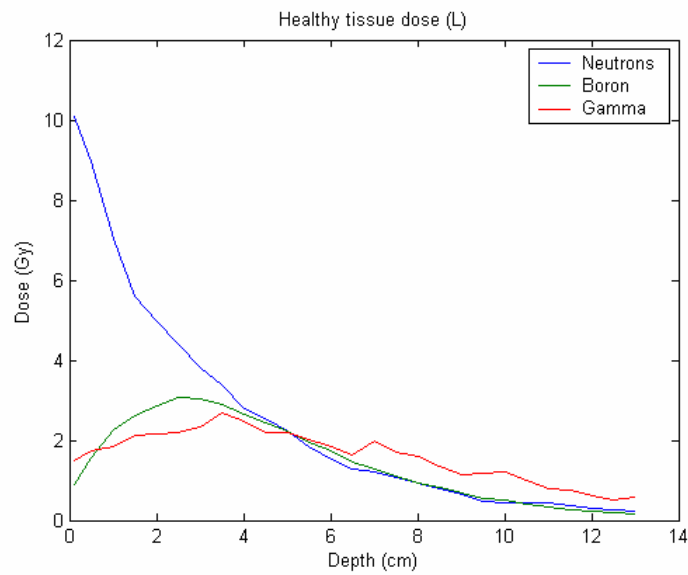


Figure 89: Components of the healthy tissue dose (L); Case 15

The maximum dose of about 37.8 Gy is reached at 2.5 cm depth in about 4.65 hours. The dose rate is 8.1 Gy/hour. However, the fast neutron contribution is still the main component to the skin and skull dose.

6.16 Case Sixteen: As Case Fifteen but using alumina reflector

The purpose of this case is to confirm what appears to be the conclusion from the previous cases that the alumina BSA reflector is primarily responsible for the balanced contribution of the neutrons and the gammas to the healthy tissue dose in the reference design⁶ (see Figure 68). For doing so the lead reflector of Case Fifteen is replaced with the alumina reflector used in Goff's design. Figure 90 shows the layout of the resulting system and Figure 91 to Figure 93 give the results.

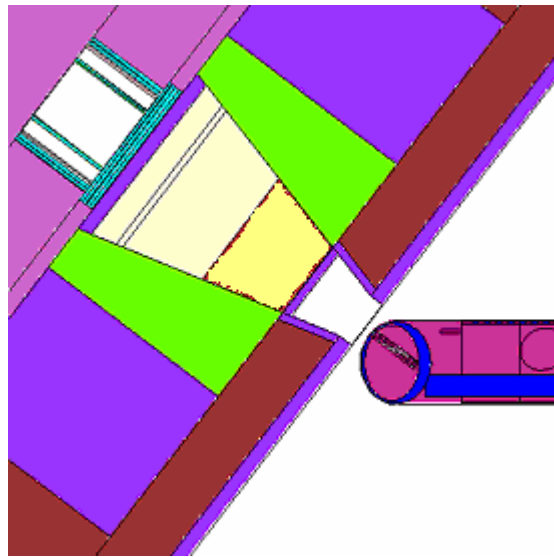


Figure 90: Cross sectional view of Case 16 system

⁶ Case 1 and its improvements through the use of the lead collar, Cases Nine and Ten

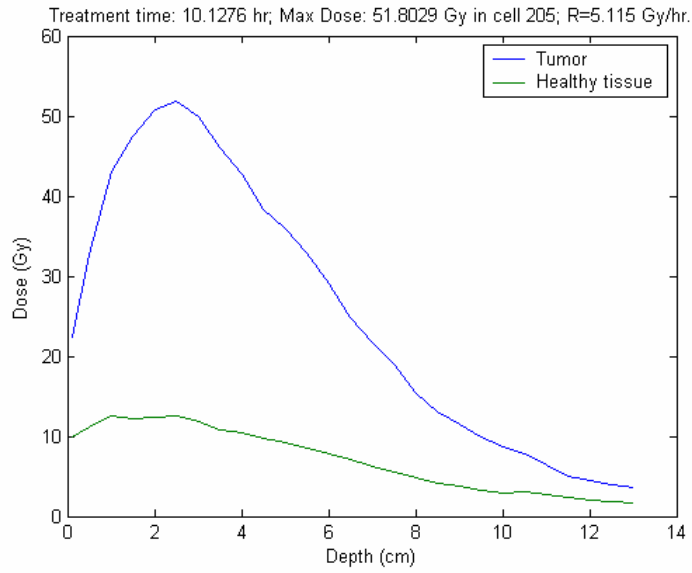


Figure 91: Total dose to the healthy tissue and to the tumor as a function of depth; Case 16

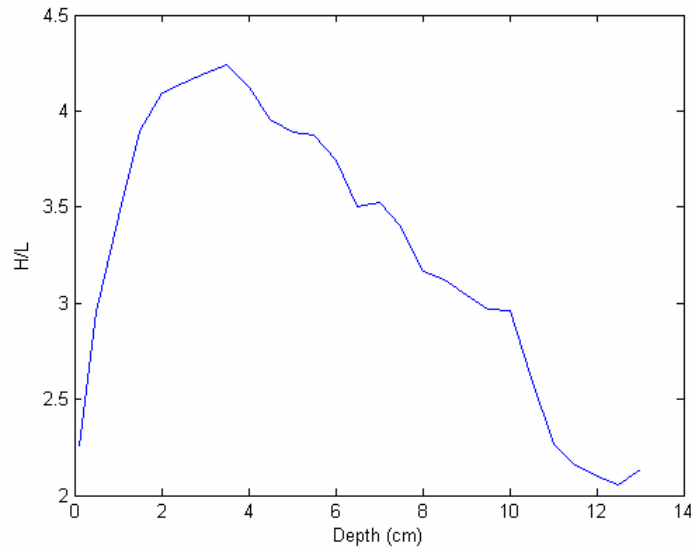


Figure 92: H/L (Tumor/healthy dose); Case 16

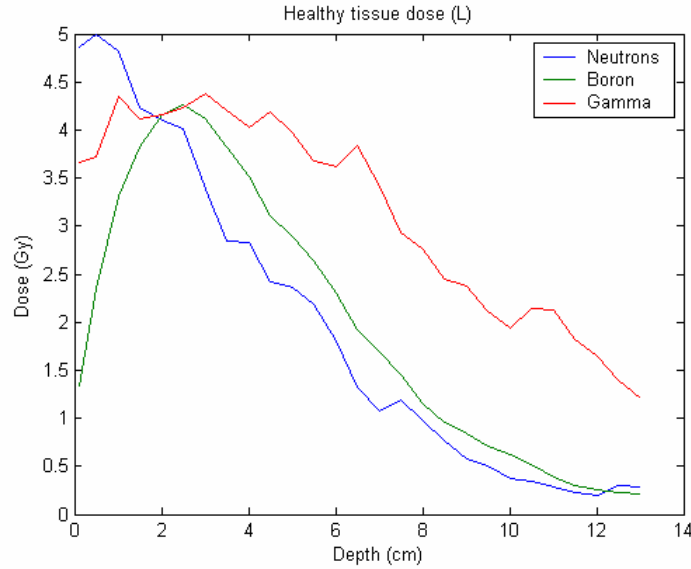


Figure 93: Components of the healthy tissue dose (L); Case 16

The maximum dose of about 51.8 Gy is reached at 2.5 cm depth in about 10 hours. The dose rate is 5.1 Gy/hour. The different relative contributions to the healthy tissue dose, shown in Figure 932, are balanced, similarly to Case Ten. This confirms that the alumina reflector is, indeed, responsible for the balanced dose contribution to the healthy tissue found in the reference design.

6.17 Summary

Table V summarizes selected parameters of the sixteen cases reported in Section 6. The most important parameter is the dose rate (Gy/hour); the higher it is the better. At the same time it is desirable to have large maximum dose, large H/L dose ratio and large lethality range. Cases 8 and 11 are the most promising designs examined from the point of view of the dose rate: Case 11 offers the highest dose rate (H) of 10.1 Gy/hour and can deliver the lethal dose of 20 Gy or higher to the tumor in the first 6 cm of brain tissue in 3.4 hours, while Case 8 offers a ~14% larger total maximum dose at the expense of ~10% lower peak dose rate. In both of these preferred designs the neutron dose component is significantly larger than the gamma dose component.

Table V: Comparison of Selected Characteristics of the Cases Examined in Section 6

Case #	Peak dose rate (Gy/h)	Maximum dose (Gy)	Treatment time (hours)*	Peak H/L	Lethality range (cm)
1	5.7	36.0	6.3	3.3	0 to 6
2	5.7	43.0	7.5	4.3	0 to 6.5
3	3.4	22.2	6.5	3.4	1 to 4
4	6.5	17.0	2.6	3.4	N/A
5	8.1	40.7	5.0	4.0	0 to 6
6	5.5	44.2	8.0	4.3	0 to 6
7	5.9	46.0	7.8	4.2	0 to 6
8	8.9	40.0	4.5	4.0	0 to 6
9	4.0	36.4	9.0	3.2	0 to 6
10	4.6	47.5	10.3	3.4	0 to 6.7
11	10.1	34.7	3.4	4.0	0 to 6
12	N/A	N/A	N/A	N/A	N/A
13	4.5	44.5	9.9	3.4	0 to 6.5
14	4.3	48.0	11.3	4.0	0 to 6.5
15	8.1	37.9	4.7	4.0	0 to 6
16	5.1	51.8	10.1	4.2	0 to 7

* Treatment time is the time required to reach the healthy tissue dose constraint of 12.5 Gy. Any tumor in the lethality range should be killed within this treatment time.

The largest maximum dose and the largest lethality range are offered by the designs of Case 16 followed by Case 14 and Case 10. In all of these cases the neutron and gamma contributions to the skin dose are equivalent.

The reason for the superior performance of the design of Case 11 over the reference BSA design (Case 1) can be understood with the help of Figure 95 to Figure 100. Figure 94 shows the ratio of the absorbed tumor dose to the maximum healthy tissue dose, or therapeutic gain, for tumors at different depths and for the skin as a function of the neutrons energy. Focusing on the 6 cm and 8 cm depths it is seen that the therapeutic gain increases monotonically up to about 10 keV, and then drops fast so that by about 20 keV the damage to the healthy tissue due to proton

recoil reaction is about as big as the damage induced to the tumor and then becomes the biggest effect. Therefore we qualitatively see what was justified in [1] with a comprehensive study using mono-energetic beams to determine the most effective energy for the neutrons, the conclusions of which are that the optimal neutron energy is 7.94 keV, and the spectral components beyond 20 keV should be minimized.

Figure 95 shows the components of the dose delivered by 7.94 keV mono-energetic neutron beam, peaking well inside the brain mass. On the other hand, a similar graph for a 20 keV mono-energetic neutron beam, (in Figure 96), shows that the maximum dose by these neutrons is given to the skin, limiting the achievable therapeutic benefits.

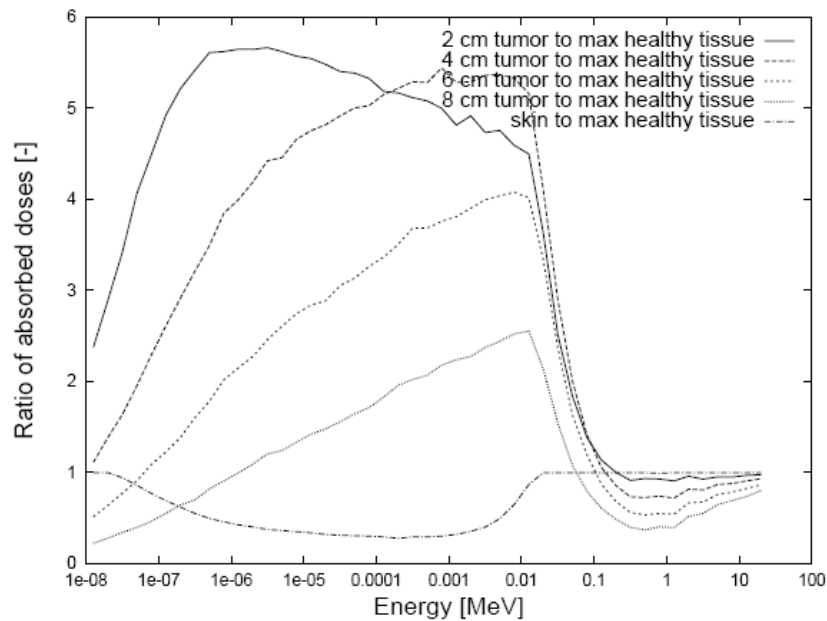


Figure 94: Ratios of absorbed doses versus neutron energy for a 12-cm-diameter mono-directional neutron beam (from [1]).

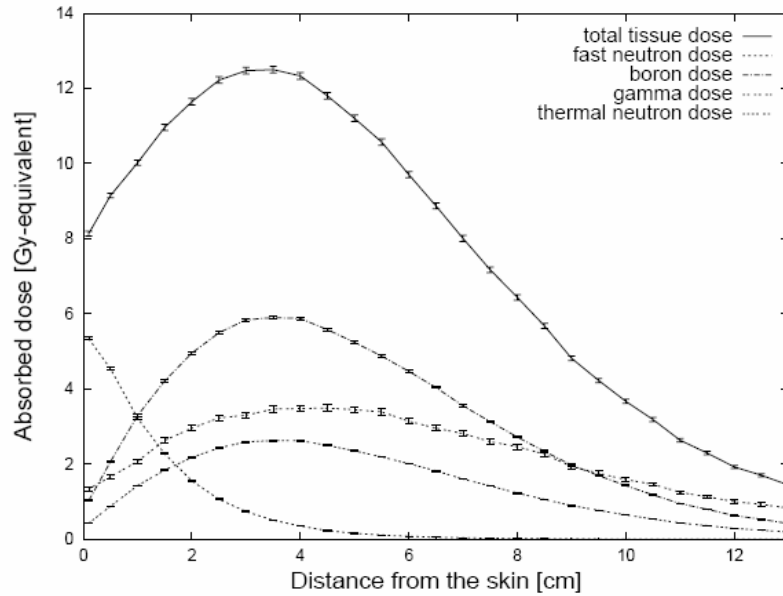


Figure 95: 7.94 keV mono-energetic neutron beam (12 cm diameter): optimal energy of the neutrons based on mono-energetic studies (from [1]).

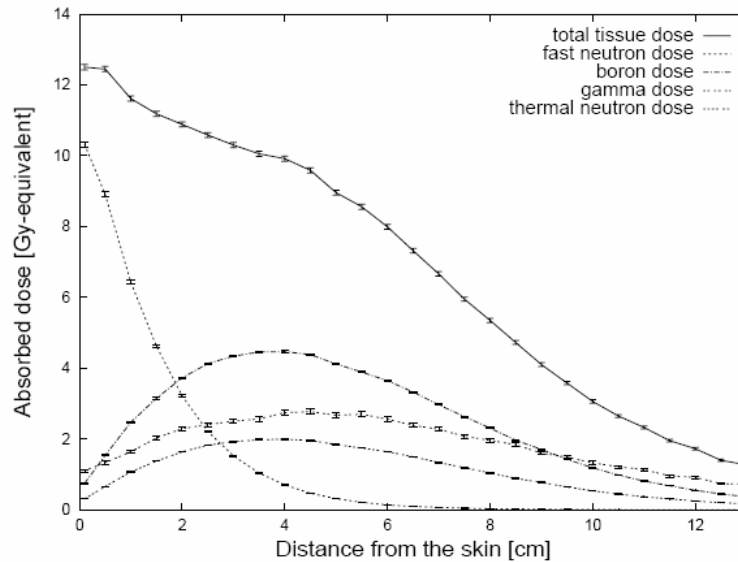


Figure 96: 20 keV mono-energetic neutron beam (12 cm diameter): upper limit of the therapeutically beneficial neutrons. (from [1])

Figure 97 shows the spectrum of the neutrons exiting the BSA of Case 1 – i.e., the reference BSA; it is very similar to the spectrum of Verbeke’s optimized design [1] shown in Figure 98. In fact the BSA design in [2] was taken from [1]. In both these designs the neutron energy peaks at less than 1 keV, making this spectrum too soft for the best possible treatment of deep-seated tumors. At the more desirable energy of about 10 keV, the neutron intensity is about half the

peak value. On the other hand, the exit neutron spectrum in Case 11 (see Figure 99) peaks at the best possible energy of about 7 keV while still decreasing rapidly before the un-desirable energy of 20 keV.

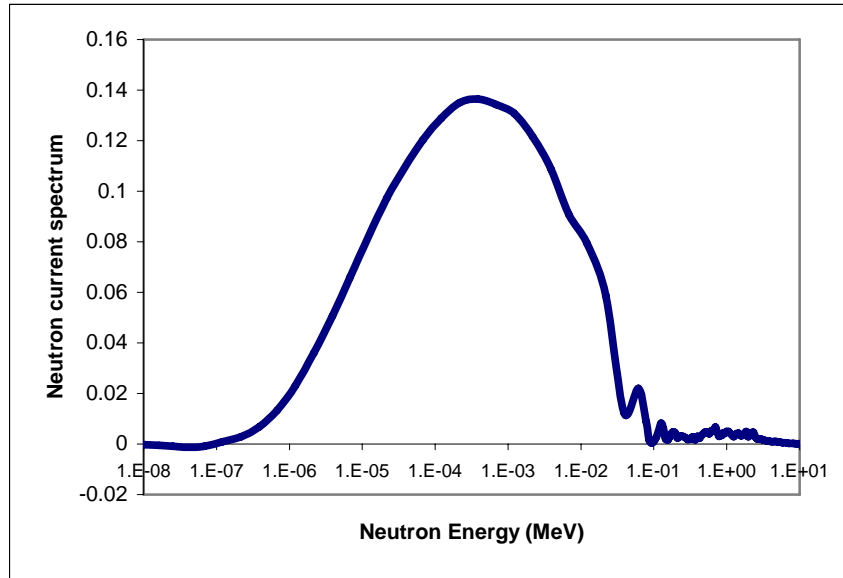


Figure 97: Exit spectrum of the neutrons for Case 1 (reference).

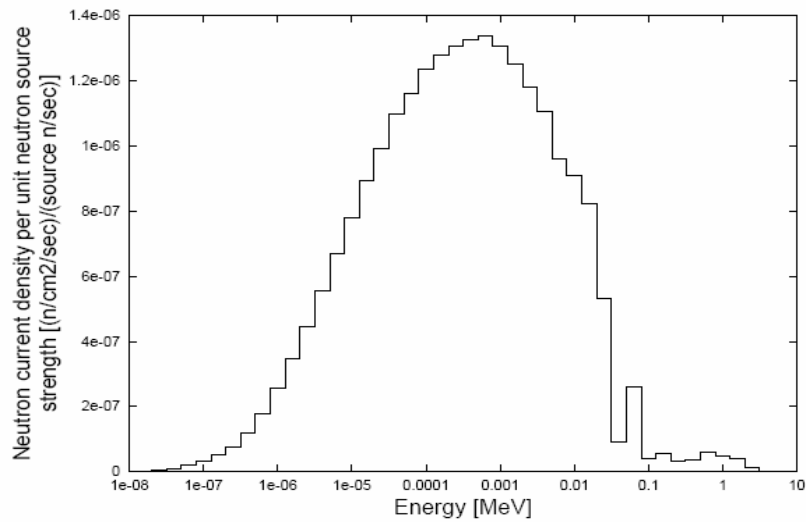


Figure 98: Exit spectrum of the neutrons for the optimized Verbeke case, (taken from [1]).

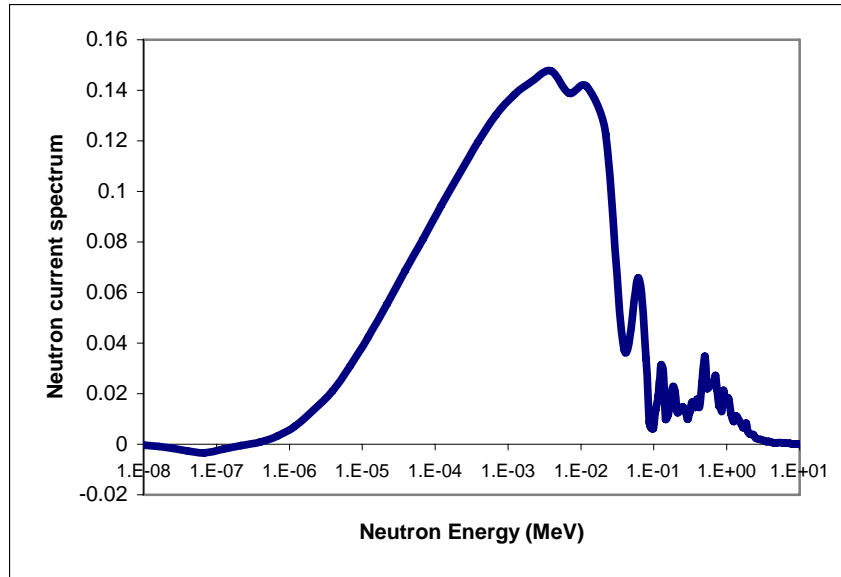


Figure 99: Exit spectrum of the neutrons for case eleven.

Figure 100 shows a comparison of the spectra of Cases 11 and 1. Case 11 spectrum is significantly harder but also have a relatively high tail of $\sim >50$ KeV neutrons; it is the preferred spectrum for treating deep seated tumors.

Figure 101 shows a similar comparison between Cases 11 and 16. The reduction in the fast current in Case 16 is responsible for a lower skin dose: this in turn translates into a higher healthy tissue dose and consequently a larger lethality range. As compared to Case 1, Case 16 has a slightly harder spectrum, which is beneficial.

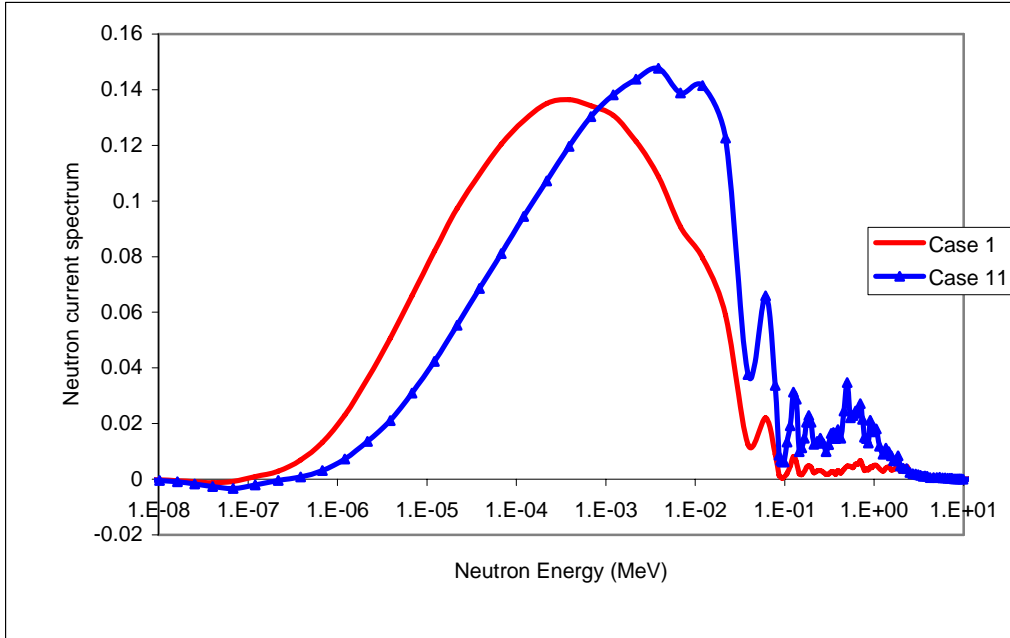


Figure 100: Exit spectrum of the neutrons for Case 1 compared to Case 11.

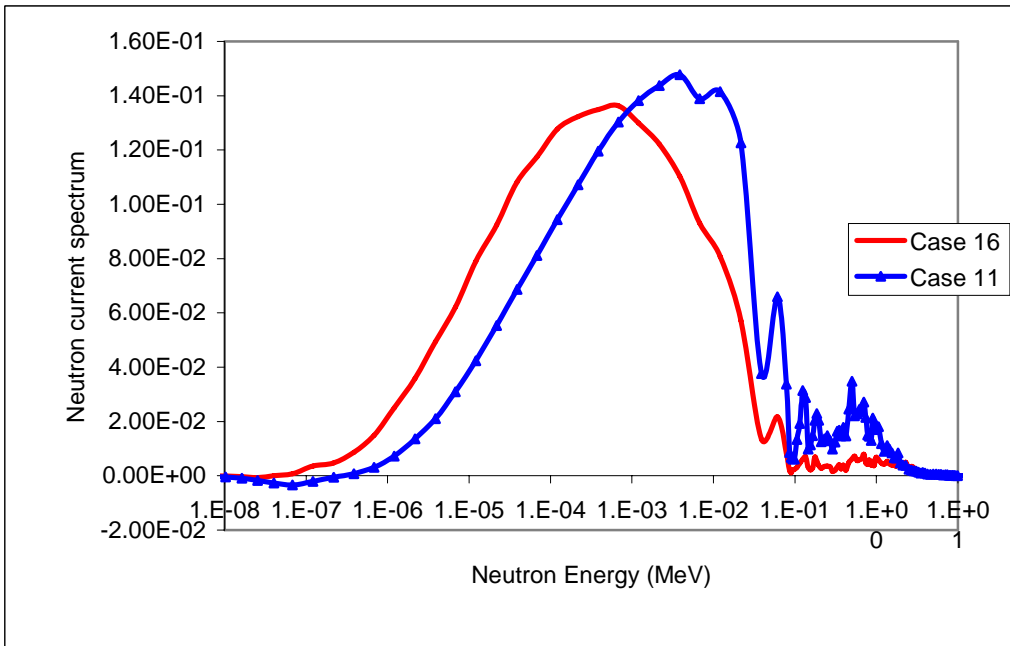


Figure 101: Exit spectrum of the neutrons for Case 16 compared to Case 11

7. DISCUSSION

Even though the original goal of up to 1 hour treatment time using a single beam and 10^{12} D-D neutrons per second source has not been achieved, it appears possible to develop a practical BNCT facility based on the optimal system identified in this study by either

- Irradiating the patient in 3 to 4 one-hour sessions
- Irradiating the patient using 3 or 4 beams simultaneously
- Enhancing the capacity of the CNS to $\sim 5 \times 10^{12}$ D-D n/s.

At the termination of this project we have been told by Dr. Ka Ngo Leung, the developer of the CNS, that they now have designs that could deliver up to 10^{13} D-D n/s. If this is proven practical, the BNCT facility designed in this project will be able to reach the project objective.

The SCM power level is estimated at 400 W when driven by a 10^{12} D-D n/s neutron source. This translates into consumption of only about 0.5% of the initially loaded ^{235}U atoms during 50 years of continuous operation. It thus appears that the SCM could operate continuously for the entire lifetime of the machine without refueling. Cooling the SCM does not pose a challenge; it may be accomplished passively; i.e., without resorting to forced circulation.

With 200 kV extraction voltage, 1 A beam current and 50% efficiency in converting the grid power to beam power, the estimated power requirement of the 10^{12} D-D n/sec CNS is estimated to be 400 kW; this is 3 orders more than the fission power. Had one not used the SCM, the CNS power required to deliver a treatment neutron beam intensity comparable to that obtained with the SCM would be over 10 MW. In view of the fact that it is so much more energy (and cost) expensive to generate a D-D neutron than an excess fission neutron, it is suggested to explore the feasibility of licensing a small, inherently safe SCM featuring k_{eff} that is larger than 0.98; possibly as large as 0.998. Such a SCM will provide an order of magnitude higher neutron multiplication than that obtained from the SCM designed in this project.

The study focused on the use of uranium enriched to up to 20% for the SCM. Had higher enrichment been acceptable or had ^{233}U been used as the primary fissile isotope, the fraction of the fission neutrons that could leak out from the SCM per D-D driving neutron could have been

increased, thus the treatment time could have been shortened without exceeding the $k_{\text{eff}} = 0.98$ constraint.

8. CONCLUSIONS

The primary objective of this project was to assess the feasibility of using a small, safe and inexpensive subcritical fission assembly to multiply the treatment neutron beam intensity attainable from a compact D-D fusion neutron source delivering 10^{12} n/s by a factor of ≥ 30 so as to provide a compact BNCT facility that could treat deep-seated brain tumors in one hour. The study concludes that it is not quite feasible to achieve this objective. Nevertheless, it appears feasible to develop a practical BNCT facility based on the optimal system identified in this study by either

- Irradiating the patient in 3 to 4 one-hour sessions
- Irradiating the patient using 3 or 4 beams simultaneously
- Enhancing the capacity of the CNS to $\sim 5 \times 10^{12}$ D-D n/s
- Increasing the permissible SCM maximum k_{eff} to 0.995

The study identified the optimal design of a SCM made of up to 20% enriched uranium fuel that is clad with aluminum that maximizes the current of neutrons that leak out from the SCM in the direction of the patient, without exceeding the maximum permissible k_{eff} of 0.98. This optimal design is made of 20% enriched uranium metal arranged as follows: two cylindrical fuel shells surrounds the CNS coaxially and four circular fuel elements are locate in-between the CNS and the BSA. The coaxial cylinders are 21 cm long – as is the CNS, and 0.06 cm thick and are clad with 0.05 cm thick aluminum on both sides. Water fills the 0.84 cm gap between them. The innermost cylinder has a radius of 13.5 cm. The disc-shaped fuel plates are, similarly, 0.06 cm thick, clad with 0.05 cm thick aluminum and have 0.84 cm thick water gaps in-between. The entire SCM is encased in aluminum structure that provides a physical barrier between the CSN and the SCM. A 0.84 cm thick water layer separates the outermost fuel element and the encasement. The total amount of enriched uranium in the SCM is 8.5 kg and its cost (not including fabrication) is estimated to be less than \$60,000. The SCM power level is estimated at 400 W when driven by a 10^{12} D-D n/s neutron source. This translates into consumption of only

about 0.5% of the initially loaded ^{235}U atoms during 50 years of continuous operation. It implies that the SCM could operate continuously for the entire lifetime of the machine without refueling. Cooling the SCM does not pose a challenge; it may be accomplished passively; i.e., without resorting to forced circulation.

Two optimal BSA designs were identified; one for maximizing the dose rate to a deep seated tumor and the other for maximizing the total dose that can be delivered to a deep seated tumor. The former offers the minimum treatment time whereas the latter offers a larger lethality range. The former features a harder neutron spectrum and relatively high neutron dose component to the skin while in the latter the neutron, gamma-ray and boron dose components in the skin are comparable. The maximum dose rate that can be delivered by the former is 10.1 Gy/hour and the maximum dose that can be delivered by the latter is 51.8 Gy.

The BSA design that maximizes the dose rate is 51.1 cm long, with a truncated conical shape with the large base towards the SCM and the small base towards the patient. The angle of the cone is 14.9 degrees, the large base towards the SCM has a radius of 23.3 cm while the small base towards the patient has a radius of 9.74 cm. The BSA is made of the following segments, starting from the SCM with the thickness indicated in cm: 3.5 cm lead, 6 cm ^7LiF , 1.5 cm lead, 17 cm ^7LiF , 4 cm fluental, 1 cm lead, 8 cm fluental, 1 cm lead, 8 cm fluental, 0.9 cm lead and 0.1 cm ^6LiF . The cone is surrounded on the side by a 1 mm thick ^6LiF in the last 19 cm towards the patient. The reflector is made of lead, and fills the space between the side of the BSA cone and a coaxial cylinder 77 cm in radius. The sides of the collimator are shielded by a lead collar 2.1 cm thick, continuing the conical shape of the BSA.

The BSA design that maximizes the total dose is 53.1 cm long, with a truncated conical shape with the large base towards the SCM and the small base towards the patient. The angle of the cone is 14.9 degrees, the large base towards the SCM has a radius of 23.3 cm while the small base towards the patient has a radius of 9.18 cm. The BSA is made of the following segments, starting from the SCM with the thickness indicated in cm: 3.5 cm lead, 27.4 cm ^7LiF , 20 cm fluental, 0.1 cm ^6LiF and 2.1 cm lead. The cone is surrounded on the side by a 1 mm thick ^6LiF in the last 21 cm towards the patient. The reflector is made of Al_2O_3 , filling the space between

the side of the BSA cone and a coaxial cylinder 35 cm in radius; lead surrounds the alumina reflector with a coaxial cylinder 77 cm in external radius. The sides of the collimator are shielded by a lead collar 2.1 cm thick, continuing the conical shape of the BSA.

REFERENCES

1. J. M. Verbeke, J. Vujic, and K. N. Leung, "Neutron Beam Optimization for Boron Neutron Capture Therapy Using the D-D and D-T High-Energy Neutron Sources," *Nuclear Technology*, 129, 257 (2000).
2. C.M. Goff, "Design of a BNCT Medical Facility for Use with a D-D Fusion-based Compact Neutron Generator", M.S. thesis, University of California, Berkeley, August 2005.
3. H. Koivunoro, T-P Lou, J. Reijonen and K-N Leung, "A Compact Neutron Generator Based on D-D or D-T Fusion Reaction for BNCT," Proceedings of the 10th International Congress on Neutron Capture Therapy for Cancer, Essen, Germany, 8 - 13 September 2002.
4. F.M. Bacon, D.F. Cowgill, C.E. Hickox, R.J. Walko, S.R. Subia, Jr., and A.A. Riedel, "High Heat Flux Target for Intense Neutron Source", *Rev. Sci. Instrum.* 55 (1), (January 1984).
5. Oak Ridge National Laboratory "RSICC Computer Code Collection MCNP4C: Monte Carlo N-Particle Transport Code System", *Radiation Safety Information Computational Center*, 3-150 p.p., Jul 2000.
6. M.D. DeHart, 2005. TRITON: A Two Dimensional Depletion Sequence for Characterization of Spent Nuclear Fuel, Nuclear science and technology division (94), Oak Ridge National Laboratory.
7. M.D. DeHart, 2005. NEWT: a New Transport Algorithm for Two-Dimensional Discrete Ordinates Analysis in Non-Orthogonal Geometries", Nuclear science and technology division (94), Oak Ridge National Laboratory.
8. W.S. Snyder, M.R. Ford, and G.G. Ford, "Estimates of Specific Absorbed Fractions for Photon Sources Uniformly Distributed in Various Organs of a Heterogeneous Phantom," MIRD Pamphlet 5 Revised, Society of Nuclear Medicine, New York, 1978.
9. "Photon, Electron, Proton and Neutron Interaction Data for Body Tissues," *ICRU 46*, International Commission on Radiation Units and Measurement, 1992.

10. R.S. Caswell, J.J. Coyne, and M.L. Randolph "KERMA Factors of Elements and Compounds for Neutron Energies Below 30 MeV," *International Journal of Applied Radiation Isotopes*, Vol. 33, 1227-1262, 1982.
11. A.D. Chanana "Boron Neutron Capture Therapy of Glioblastoma Multiforme at the Brookhaven Medical Research Reactor, A Phase I/II Study," FDA IND 43317, Protocol 4, Brookhaven National Laboratory, 1996.
12. Y. Karni, D. Regev, E. Greenspan, S. Goluoglu, L.M. Petrie and C.M. Hopper, "The SMORES Capability for Minimum Critical Mass Determination," Proceedings of the International Conference on Nuclear Criticality Safety (ICNC2003), Tokai-Mura, Japan, October 20-24, 2003.
13. E. Greenspan and Y. Karni, BNCT Beam Quality Maximization, 8th International Symposium on Neutron Capture Therapy for Cancer, La Jolla, CA, Sept. 13-18, 1998.
14. E. Greenspan and Y. Karni, The "SWAN" Approach to Neutron Beam Optimization for BNCT and Other Applications, International Conf. on the Physics of Nucl. Sci. & Technol., Long Island, NY, Oct. 5-8, 1998.
15. Y. Karni, E. Greenspan and J. Vujic, Accelerator Driven Fission Neutron Source for BNCT, ANS Embedded Topical Mtg. On Nuclear Applications of Accelerator Technology, Albuquerque, NM, Nov. 16-20, 1997.

APPENDIX A – Reflector Materials

A.1 INTRODUCTION

The objective of this study was to rank different materials by their suitability to serve as a reflector for a small critical assembly. The critical assembly examined is a minimum mass spherical core made of a mixture of UZrH1.6 with 20% enriched U. The calculations were done using MCNP. Three parameters were compared for each of the reflector materials: the multiplication eigenvalue (k_{eff}), the total current escaping from the reflector and the fast neutron current (neutron energy >1 keV) escaping from the reflector. Two reflector thicknesses were examined: 20 cm and 120 cm. BeO was selected as the preferred reflector material for the BNCT facility as it minimizes the amount and cost of the required uranium and contributes to the safety of the facility: the replacement of BeO or part thereof with any other material, possibly as a result of an accident, will result in a negative reactivity effect.

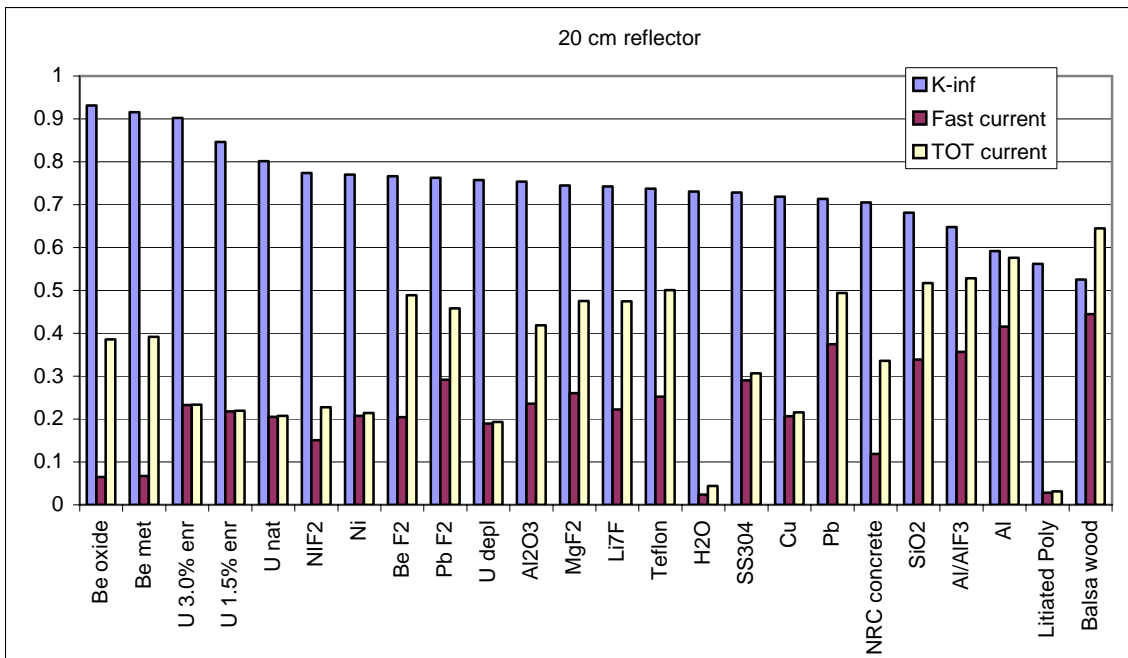


Figure 102: Comparison of the effectiveness of various materials as reflectors 20 cm thick.

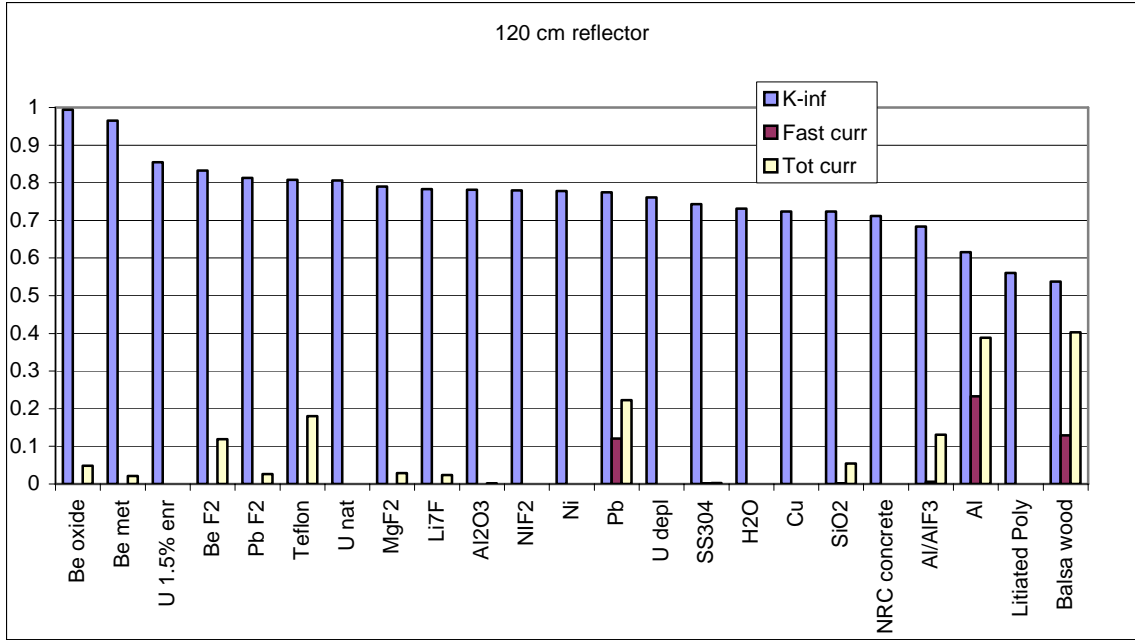


Figure 103: Comparison of the effectiveness of various materials as reflectors 120 cm thick.