

---

**Pacific Northwest  
National Laboratory**

Operated by Battelle for the  
U.S. Department of Energy

## Annual Hanford Seismic Report for Fiscal Year 2005

A. C. Rohay  
S. P. Reidel  
D. C. Hartshorn  
M. D. Sweeney  
R. E. Clayton

December 2005

Prepared for the U.S. Department of Energy  
under Contract DE-AC05-76RL01830



## **DISCLAIMER**

This report was prepared as an account of work sponsored by an agency of the United States Government. Reference herein to any specific commercial product, process, or service by trade name, trademark, manufacturer, or otherwise does not necessarily constitute or imply its endorsement, recommendation, or favoring by the United States Government or any agency thereof, or Battelle Memorial Institute.

PACIFIC NORTHWEST NATIONAL LABORATORY  
*operated by*  
BATTELLE  
*for the*  
UNITED STATES DEPARTMENT OF ENERGY  
*under Contract DE-AC05-76RL01830*

**Printed in the United States of America**

**Available to DOE and DOE contractors from the  
Office of Scientific and Technical Information, P.O. Box 62, Oak Ridge, TN 37831:  
prices available from (615) 576-8401.**

**Available to the public from the National Technical Information Service,  
U.S. Department of Commerce, 5285 Port Royal Rd., Springfield, VA 22161**



This document was printed on recycled paper.

# Annual Hanford Seismic Report for Fiscal Year 2005

Pacific Northwest National Laboratory  
Hanford Seismic Assessment Team

A. C. Rohay

S. P. Reidel

D. C. Hartshorn

M. D. Sweeney

R. E. Clayton

December 2005

Prepared for the U.S. Department of Energy  
under Contract DE-AC05-76RL01830

## Summary

The Hanford Seismic Assessment Program (HSAP) provides an uninterrupted collection of high-quality raw and processed seismic data from the Hanford Seismic Network for the U.S. Department of Energy and its contractors. The Hanford Seismic Assessment Team locates and identifies sources of seismic activity and monitors changes in the historical pattern of seismic activity at the Hanford Site. The data are compiled, archived, and published for use by the Hanford Site for waste management, Natural Phenomena Hazards assessments, and engineering design and construction. In addition, the seismic monitoring organization works with the Hanford Site Emergency Services Organization to provide assistance in the event of a significant earthquake on the Hanford Site.

The Hanford Seismic Network and the Eastern Washington Regional Network consist of 41 individual sensor sites and 15 radio relay sites maintained by the Hanford Seismic Assessment Team.

For the Hanford Seismic Network, there were 1,708 triggers during fiscal year 2005 of which 72 were local earthquakes. The largest earthquake for the year occurred during the fourth quarter; it was a magnitude 2.4 event on July 13, 2005 UTC (July 12, 2005 local time). This earthquake was a random event and occurred in the crystalline basement east of the Hanford Site. Stratigraphically, 30 earthquakes occurred in the Columbia River basalt (approximately 0-5 km), 6 earthquakes were in the pre-basalt sediments (approximately 5-10 km), and 36 earthquakes were in the crystalline basement (approximately 10-25 km). Geographically, 28 earthquakes occurred in swarm areas, 19 earthquakes were on major geologic structures, and 25 earthquakes were classified as random events.

Fourth quarter earthquakes are reported in the annual report. For the Hanford Seismic Network, there were 303 triggers during the fourth quarter, of which 7 were local earthquakes. Stratigraphically, a total of two earthquakes occurred in the Columbia River basalt (approximately 0-5 km), one earthquake was in the pre-basalt sediments (approximately 5-10 km), and four earthquakes were in the crystalline basement (approximately 10-25 km). Geographically, no earthquake occurred in swarm areas, two earthquakes were on major geologic structures, and five earthquakes were classified as random events.

## Acronyms

BWIP	Basalt Waste Isolation Project
CDPD	Cellular Digital Packet Data
CRBG	Columbia River Basalt Group
DOE	U.S. Department of Energy
ETNA	strong motion accelerometer manufactured by Kinometrics
EWRN	Eastern Washington Regional Network
FY	fiscal year
GPS	Global Positioning System
HSAP	Hanford Seismic Assessment Program
HSAT	Hanford Seismic Assessment Team
HSN	Hanford Seismic Network
$M_c$	Coda-Length Magnitude
$M_L$	Local Magnitude
$M_w$	Moment Magnitude
PNNL	Pacific Northwest National Laboratory
RAW	Rattlesnake Mountain-Wallula Alignment
SMA	strong motion accelerometer
USGS	United States Geological Survey
UTC	Universal Time, Coordinated
UW	University of Washington
WHC	Westinghouse Hanford Company

# Contents

Summary .....	iii
Acronyms .....	v
1.0 Introduction .....	1.1
1.1 Mission .....	1.1
1.2 History of Monitoring Seismic Activity at Hanford.....	1.1
1.3 Documentation and Reports .....	1.2
2.0 Network Operations .....	2.1
2.1 Seismometer Sites .....	2.1
2.1.1 Station Maintenance .....	2.5
2.1.2 Data Acquisition .....	2.5
2.2 Strong Motion Accelerometer Sites .....	2.5
2.2.1 Location .....	2.5
2.2.2 Site Design.....	2.7
2.2.3 Strong Motion Accelerometer Operations Center .....	2.8
2.2.4 Strong Motion Operational Characteristics .....	2.8
3.0 Earthquake Catalog Description .....	3.1
3.1 Coda Length Magnitude.....	3.1
3.2 Velocity Model.....	3.1
3.3 Quality Factors (Q).....	3.1
4.0 Geology and Tectonic Analysis .....	4.1
4.1 Earthquake Stratigraphy .....	4.1
4.2 Geologic Structure Beneath the Monitored Area .....	4.1
4.3 Tectonic Pattern.....	4.4
4.4 Depth of Earthquakes .....	4.5
4.5 Tectonic Activity.....	4.5
4.5.1 Annual Summary .....	4.5
4.5.2 First Quarter Earthquakes of FY 2005.....	4.6
4.5.3 Second-Quarter Earthquakes of FY 2005 .....	4.9
4.5.4 Third Quarter Summary of FY 2005 .....	4.12
4.5.5 Fourth Quarter Summary of FY 2005.....	4.14
5.0 Strong Motion Accelerometer Operations .....	5.1
5.1 FY 2005 Triggers of the Hanford SMA Network .....	5.1

6.0 Capabilities in the Event of a Significant Earthquake.....	6.1
6.1 Use of the SMA Network in the Event of an Earthquake .....	6.1
7.0 References .....	7.1

## Figures

2.1 Locations of Seismograph Stations and Strong Motion Accelerometer Sites in the Hanford Seismic Network.....	2.2
2.2 Locations of Seismograph Stations in the Eastern Washington Regional Network .....	2.4
2.3 Schematic Diagram of a Strong Motion Accelerometer Installation .....	2.8
4.1 Tectonic Map of Columbia Basin Showing Major Seismic Source Structures.....	4.2
4.2 Geologic Cross Sections Through the Columbia Basin .....	4.3
4.3 All Earthquakes Recorded Within the Hanford Monitoring Area During FY 2005 .....	4.7
4.4 Location of all Earthquakes located in the Hanford Monitoring Area Between October 1, 2004 and December 31, 2004.....	4.8
4.5 All Earthquakes Located Within the Hanford Monitoring Area Between January 1, 2005 and March 30, 2005 .....	4.10
4.6 Location of all Earthquakes Located in the Hanford Monitoring Area Between April 1, 2005 and June 30, 2005 .....	4.13
4.7 Location of all Earthquakes Located in the Hanford Monitoring Area Between July 1, 2005 and September 30, 2005 .....	4.15

## Tables

2.1 Seismic Stations in the Hanford Seismic Network .....	2.1
2.2 Seismic Stations in the Eastern Washington Regional Network.....	2.3
2.3 Acquisition System Recorded Triggers.....	2.6
2.4 Free-Field Strong Motion Accelerometer Sites .....	2.6
2.5 Instrument Parameters for the Kinematics ETNA™ System in the Hanford SMA Network.....	2.8
3.1 Local Seismic Data, October 1, 2004 to September 30, 2005.....	3.2
3.2 Seismic Velocities for Columbia Basin Stratigraphy.....	3.7
4.1 Thicknesses of Stratigraphic Units in the Monitoring Area.....	4.4
4.2 Number of Local Earthquakes Occurring in Stratigraphic Units .....	4.5
4.3 Summary of Earthquake Locations for FY 2005 .....	4.6

# 1.0 Introduction

This report covers seismic activity on and near the Hanford Site for fiscal year (FY) 2005. The report also includes seismic activity from the fourth quarter (July 1, 2005 to September 30, 2005). This report locates seismicity within the monitored region and provides the geologic interpretations of the earthquakes.

## 1.1 Mission

The principal mission of the Hanford Seismic Assessment Program (HSAP) at the Hanford Site is to ensure compliance with DOE Order 420.1, "Facility Safety" and DOE Order G 420.1-1, Section 4.7, "Emergency Preparedness and Emergency Communications." DOE Order 420.1 establishes facility safety requirements related to nuclear safety design, criticality safety, fire protection, and natural phenomena hazards mitigation. For seismic assessment, this order states:

### 4.4.5 Natural Phenomena Detection.

*Facilities or sites with hazardous materials shall have instrumentation or other means to detect and record the occurrence and severity of seismic events.*

The HSAP supports Hanford Site emergency services organizations in complying with DOE Order G 420.1-1, Section 4.7, "Emergency Preparedness and Emergency Communications," by providing assistance in the event of an earthquake on the Hanford Site.

In addition, Seismic Assessment provides an uninterrupted collection of high-quality raw seismic data from the Hanford Seismic Network (HSN) located on and around the Hanford Site, and the Eastern Washington Regional Network (EWRN). This report provides interpretations of seismic events from the Hanford Site and vicinity. Hanford Seismic Assessment locates and identifies sources of seismic activity, monitors changes in the historical pattern of seismic activity at the Hanford Site, and builds a "local" earthquake database (processed data) that is permanently archived. The focus of this report is the precise location of earthquakes proximal to or on the Hanford Site, specifically between 46 degrees and 47 degrees north latitude and between 119 degrees and 120 degrees west longitude. Data from the EWRN and other seismic networks in the northwest provide the Seismic Assessment Project with necessary regional input for the seismic hazards analysis at the Hanford Site. These seismic data are used to support Hanford Site contractors for waste management activities, Natural Phenomena Hazards assessments, and engineering design and construction.

## 1.2 History of Monitoring Seismic Activity at Hanford

Assessing seismic activity at the Hanford Site was initiated in 1969 by the United States Geological Survey (USGS) under a contract with the U.S. Atomic Energy Commission. In 1975, the University of Washington (UW) assumed responsibility for the network and subsequently expanded it. In 1979, the Basalt Waste Isolation Project (BWIP) became responsible for collecting seismic data for the Hanford Site as part of site characterization activities. Rockwell Hanford Operations, followed by Westinghouse Hanford Company (WHC), operated the local network and were the contract technical advisors for the EWRN operated and maintained by UW. Funding ended for BWIP in December 1988. Assessment of seismic



activity and responsibility for the UW contract were then transferred to WHC's Environmental Division. Maintenance responsibilities for the EWRN also were assigned to WHC who made major upgrades to EWRN sites.

Effective October 1, 1996, all seismic assessment activities were transferred to the Pacific Northwest National Laboratory (PNNL).<sup>1</sup>

The Hanford Strong Motion Accelerometer (SMA) network was constructed during 1997 and came on-line in May 1997. It operated until September 30, 1997, when it was mothballed due to lack of funding. Funding was restored on October 1, 1998, by joint agreement between the U.S. Department of Energy (DOE) and PNNL. Operation of the SMA sites resumed on November 20, 1999, and has operated continuously since that time.

### **1.3 Documentation and Reports**

The HSAP issues quarterly reports of local activity, an annual catalog of earthquake activity on and near the Hanford Site, and special-interest bulletins on local seismic events. The HSAP also provides information and special reports to other functions as requested. Earthquake information provided in these reports is subject to revisions if new data become available. In addition, an archive of all seismic data from the HSN is maintained by PNNL.

---

<sup>1</sup> Pacific Northwest National Laboratory is operated by Battelle Memorial Institute for the U.S. Department of Energy.

## 2.0 Network Operations

### 2.1 Seismometer Sites

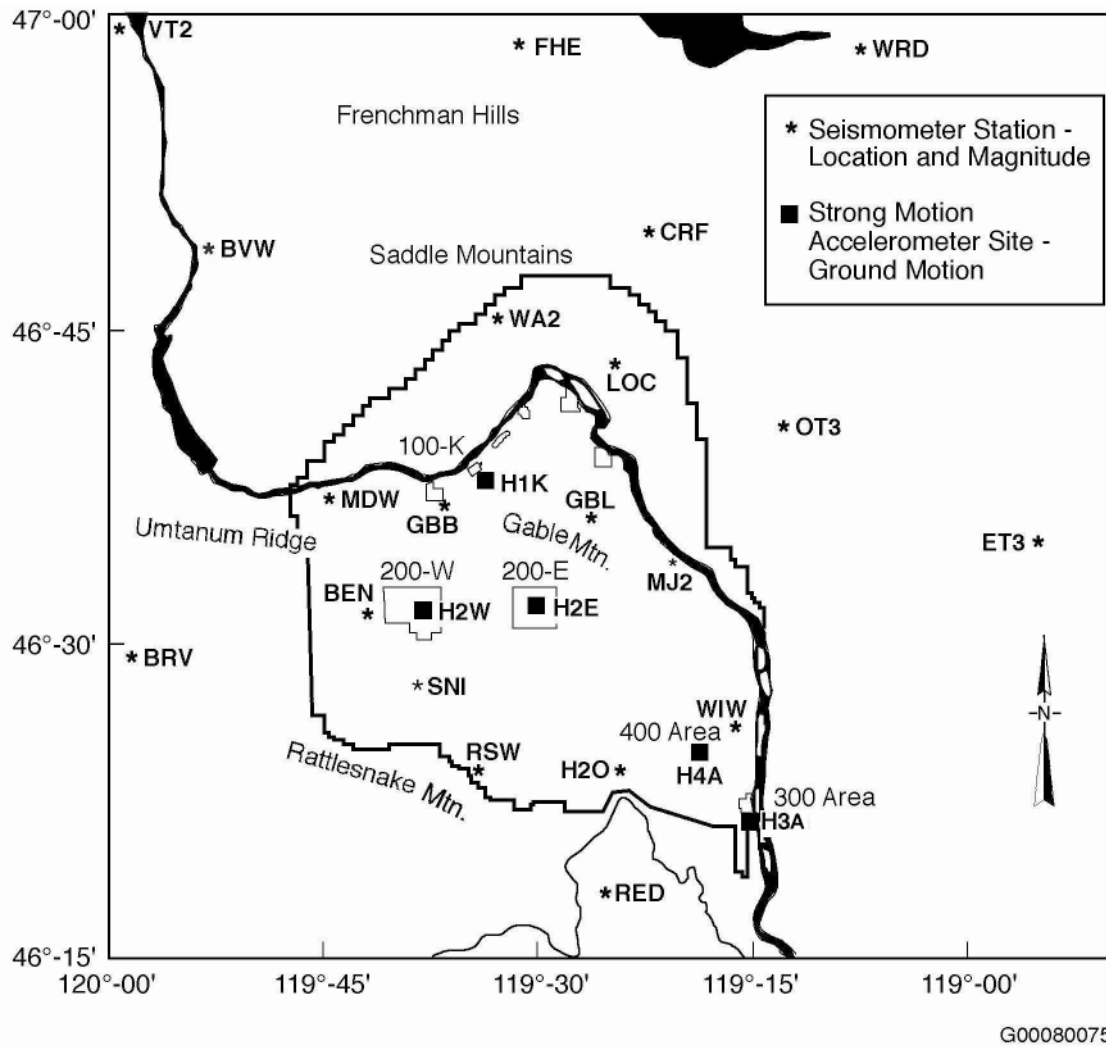
The seismic network consists of two designs of equipment and sites: seismometer sites and strong motion accelerometer (SMA) sites. Seismometer sites are designed to locate earthquakes and determine their magnitude and hypocenter location. SMA sites are designed to measure ground motion and will be discussed in Section 2.2.

The HSN and the EWRN consist of 41 sensor sites. Most sites are in remote locations and require solar panels and batteries for power. The HSN uses 23 sites (Table 2.1 and Figure 2.1) and the EWRN uses 36 sites (Table 2.2 and Figure 2.2); both networks share 18 sites. The networks have 45 combined data channels because Gable Butte and Frenchman Hills East are three-component sites, each consisting of one vertical, one north-south horizontal, and one east-west horizontal data channel. Both networks use 15 additional telemetry relay sites. Data from all sites or relays are transmitted to the Sigma V building, Richland, Washington.

**Table 2.1.** Seismic Stations in the Hanford Seismic Network

The first column is the three-letter seismic station designator. The latitude and longitude, elevation above sea level in meters, and the full station name follow this. The locations of the stations are all in Washington; locations were derived from a Global Positioning System (GPS).				
Station	Latitude Deg. Min. N	Longitude Deg. Min. W	Elevation (m)	Station Name
BEN	46N31.13	119W43.02	340	Benson Ranch
BLT	45N54.91	119W10.55	659	Bickelton
BRV	46N49.12	119W59.47	920	Black Rock Valley
BVW	46N48.66	119W52.99	670	Beverly
CRF	46N49.50	119W23.22	189	Corfu
ET3	46N34.64	118W56.25	286	Eltopia Three
*FHE	46N57.11	119W29.82	455	Frenchman Hills East
*GBB	46N36.49	119W37.62	177	Gable Butte
GBL	46N35.92	119W27.58	330	Gable Mountain
H2O	46N23.75	119W25.38	158	Water
LOC	46N43.02	119W25.85	210	Locke Island
MDW	46N36.79	119W45.66	330	Midway
MJ2	46N33.45	119W21.54	146	May Junction Two
OT3	46N40.14	119W13.98	322	Othello Three
PRO	46N12.73	119W41.15	550	Prosser
RED	46N17.92	119W26.30	366	Red Mountain
RSW	46N23.67	119W35.48	1,045	Rattlesnake Mountain
SNI	46N27.85	119W39.60	312	Snively Ranch
VT2	46N58.04	120W58.95	1,270	Vantage Two
WA2	46N45.32	119W33.94	244	Wahluke Slope
WIW	46N25.76	119W17.26	128	Wooded Island
WRD	46N58.20	119W08.69	375	Warden
YPT	46N02.93	118W57.73	325	Yellepit

\* Three-component station.

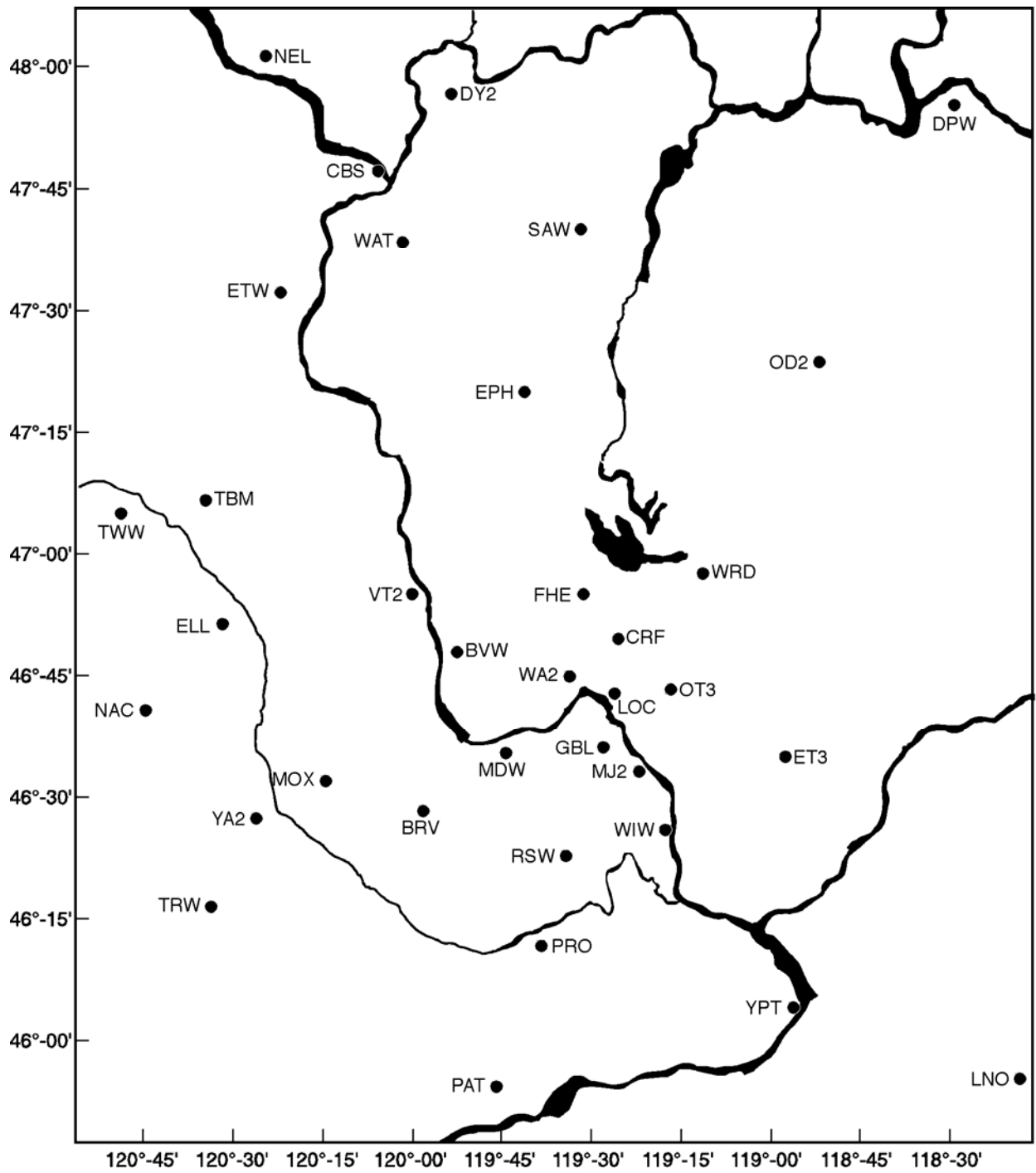


**Figure 2.1.** Locations of Seismograph Stations and Strong Motion Accelerometer Sites in the Hanford Seismic Network (see Tables 2.1 and 2.4 for description of locations). Bickelton (BLT) is shown on Figure 2.2.

**Table 2.2.** Seismic Stations in the Eastern Washington Regional Network

The first column is the three-letter seismic station designator. The latitude and longitude, elevation above sea level in meters, and the full station name follow this. The locations of the stations are all in Washington unless otherwise indicated; locations were determined from a Global Positioning System (GPS).				
Station	Latitude Deg. Min. N.	Longitude Deg. Min. W.	Elevation (m)	Station Name
BLT	46N54.91	119W10.55	659	Bickelton
BRV	46N29.12	119W59.47	920	Black Rock Valley
BVW	46N48.66	119W52.99	670	Beverly
CBS	47N48.26	120W02.50	1,067	Chelan Butte, South
CRF	46N49.50	119W23.22	189	Corfu
DPW	47N52.25	118W12.17	892	Davenport
DY2	47N59.11	119W46.28	890	Dyer Hill Two
ELL	46N54.58	120W33.98	789	Ellensburg
EPH	47N21.38	119W35.76	661	Ephrata
ET3	46N34.64	118W56.25	286	Eltopia Three
ETW	47N36.26	120W19.94	1,477	Entiat
*FHE	46N57.11	119W29.82	455	Frenchman Hills East
GBL	46N35.92	119W27.58	330	Gable Mountain
LNO	45N52.31	118W17.11	771	Linton Mountain, Oregon
LOC	46N43.02	119W25.85	210	Locke Island
MDW	46N36.79	119W45.66	330	Midway
MJ2	46N33.45	119W21.54	146	May Junction Two
MOX	46N34.64	120W17.89	501	Moxee City
NAC	46N43.99	120W49.42	728	Naches
NEL	48N04.21	120W20.41	1,500	Nelson Butte
OD2	47N23.26	118W42.58	553	Odessa Two
OT3	46N40.14	119W13.98	322	Othello Three
PAT2	45N53.03	119W45.40	259	Paterson Two
PRO	46N12.73	119W41.15	550	Prosser
RSW	46N23.67	119W35.48	1,045	Rattlesnake Mountain
SAW	47N42.10	119W24.03	701	St. Andrews
TBM	47N10.20	120W35.88	1,006	Table Mountain
TRW	46N17.32	120W32.31	723	Toppenish Ridge
TWW	47N08.29	120W52.10	1,027	Teanaway
VT2	46N58.04	119W58.95	1,270	Vantage Two
WA2	46N45.32	119W33.94	244	Wahluke Slope Two
WAT	47N41.92	119W57.24	821	Waterville
WIW	46N25.76	119W17.26	128	Wooded Island
WRD	46N58.20	119W08.69	375	Warden
YA2	46N31.60	120W31.80	652	Yakima Two
YPT	46N02.93	118W57.73	325	Yellepit

\* Three-component station.



G02100036-4

**Figure 2.2.** Locations of Seismograph Stations in the Eastern Washington Regional Network (see Table 2.2 for location descriptions)

### **2.1.1 Station Maintenance**

The HSN's maintenance records for the seismic sensor and relay sites are on file in the HSAP office, Sigma V Building, Richland, Washington.

### **2.1.2 Data Acquisition**

The signals from the seismometer sites are monitored for changes in signal amplitude that are expected from earthquakes. The seismic network is subdivided into spatial groupings of stations that are monitored for nearly simultaneous amplitude changes, resulting in triggering a permanent recording of the events. The groupings and associated weighting schemes are designed to allow very small seismic events to be recorded and to minimize false triggers. Events are classified as local (south-central Washington near the Hanford Site), regional (Western U.S. and Canada), and teleseisms (from farther distances around the world). Local and regional events are usually earthquakes, but quarry and mining explosions are also recorded. Quarry and mining explosions can usually be identified from wave characteristics, time of day, and through confirmation with local government agencies and industries. Frequently, military exercises at the U.S. Army's Yakima Training Center produce a series of acoustic shocks that unavoidably trigger the recording system. Sonic booms and thunder also produce acoustic signals that trigger the recording system.

A PC-based system (Earthworm system) adapted from a USGS program and the UW system was implemented at Hanford during FY 1999. One system has been in continuous operation since January 6, 1999. A second, backup PC system was installed in mid-March 1999, and both systems have been running in parallel since that time. The hardware and software have been periodically upgraded. Data from triggers are collected on a SUN™ (registered trademark of Sun Microsystems, Santa Clara, California) workstation that is used to determine earthquake locations and magnitudes (Section 3). Although the two systems are practically identical, there is enough granularity (signal-to-noise) in the trigger timing that they sometimes record exclusive events. In nearly all cases, these exclusive triggers are "false" triggers, not earthquakes or quarry blasts (i.e., from acoustic sources). The remainders are from barely detectable, small signals from regional and teleseismic earthquakes.

The types and numbers of triggers recorded during FY 2005 by the seismic acquisition system are summarized in Table 2.3.

## **2.2 Strong Motion Accelerometer Sites**

### **2.2.1 Location**

The Hanford SMA network consists of five free-field SMA sites (see Figure 2.1) (Table 2.4). There is one free-field SMA located in each of the 200 Separations Areas, one adjacent to the K Basins in the 100-K Area, one adjacent to the 400 Area where the Fast Flux Test Reactor is located, and one at the south end of the 300 Area. With the termination of the Fast Flux Test Reactor and draining of the liquid sodium coolant taking place now, plans have been made to terminate this site and move the instrument to a new location.

The instrumentation locations were chosen based on two criteria (Moore and Reidel 1996): 1) instruments should be located in areas having the highest densities of people and 2) instruments should be

located in areas having hazardous facilities. Some of the highest concentrations of employees at Hanford are 200-East and West Areas, 100-K Area, the Fast Flux Test Facility (400 Area), and the 300 Areas. The 200 Areas are where high-level radioactive waste from past processing of fuel rods is stored in single-shell and double-shell tanks. In addition, the Canister Storage Facility that holds encapsulated spent fuel rods is in 200-East Area and the new Waste Treatment Plant is being constructed in 200-East Area. The 100-K Area contains the K Basins where spent fuel rods from the N Reactor are stored prior to encapsulation. The Cold Vacuum Drying Facility, located in the 100-K Area, is used to encapsulate spent fuel rods from the K Basins prior to shipment to the Canister Storage Building in 200-East Area.

**Table 2.3.** Acquisition System Recorded Triggers

Event Type	First Quarter	Second Quarter	Third Quarter	Fourth Quarter	Total	Description
Triggers	690	378	337	303	1,708	Total number of times the recording mechanism was activated.
South-Central Washington	40	37	32	18	127	Seismic events in south-central Washington and north-central Oregon that triggered the HSN.
Regional	43	50	51	45	189	Seismic events in the Western United States and Canada.
Teleseism	75	55	67	54	251	Seismic events at farther distances from around the world.
Total Earthquake Events	158	142	150	117	567	Total number of earthquake triggers.
Local Explosions	3	10	3	5	21	Quarry blasts, typically, within the 46-47 degrees north latitude and 119-120 degrees west longitude.
Local Earthquakes	29	16	20	7	72	Seismic events within the 46-47 degrees north latitude and 119-120 degrees west longitude.

**Table 2.4.** Free-Field Strong Motion Accelerometer Sites

Site	Site ID	Location	Latitude Longitude Elevation
100-K Area	H1K	South of K Basins outside 100 Area fence lines.	46° 38.51' 119° 35.53' 152 m
200 East Area	H2E	East of B Plant; north of 7th Street and east of Baltimore Avenue.	46° 33.58' 119° 32.00' 210 m
200 West Area	H2W	West of Plutonium Finishing Plant (PFP) and 200-West Area tree barrier.	46° 33.11' 119° 38.64' 201 m
300 Area	H3A	South end of 300 Area inside fence lines (NE 1/4, SW 1/4, Sec. 11, T10N, R28E).	46° 21.83' 119° 16.55' 119 m
400 Area	H4A	500 ft from fence line on east side of facility and north of parking area).	46° 26.13' 119° 21.30' 171 m

### 2.2.2 Site Design

All free-field SMA sites consist of a four-panel solar array and two 30-gallon galvanized drums. Each panel has a maximum 42-watt output. The two 30-gallon drums are set in the ground such that the base of the drum is about 1 m below the surface. One drum houses only the SMA; the other drum, which is connected via a sealed conduit to the SMA drum, contains the batteries. Communication is through a General Packet Radio Service (GPRS) system, which provides a continuous radio data-link with an internet service provider. This GPRS system along with the solar power regulator is housed in a small enclosure mounted at the rear of the solar array. The enclosure serves as a junction box for all cabling between equipment inside and outside of the drums through conduit. The antenna for the GPRS is mounted on top of the enclosure. The enclosure permits quick access to check battery conditions and a connection directly to the RS-232 port of the SMA without removing the drum lids.

The SMA instruments are three-component units consisting of one vertical, one north-south horizontal, and one east-west horizontal data channel. The instruments in use are the ETNA™ system (registered trademark of Kinemetrics, Inc., Pasadena, California). Instrument specifications are summarized in Table 2.5. In addition to the three-component SMAs, each ETNA SMA unit contains a computer, Global Positioning System (GPS) receiver (Figure 2.3). These systems are housed in a watertight box.

The GPRS system provides the internet address connection to access the system. Stations can be monitored from any computer with appropriate access, and data can be downloaded to a dedicated computer in the Seismic Assessment laboratory. The data can also be downloaded directly at each site via a built in cable connection at the enclosure in case of communication failure.

The SMAs have an internal GPS receiver used principally to link it to the National Bureau of Standards timing system.<sup>1</sup> The GPS is internally activated approximately every 4 hours and checks the “location of the instrument” and the time. Any differences between the internal clock and the GPS time are recorded and saved by the SMA. Any corrections to the internal timing are made automatically. Typically, the greatest correction recorded is approximately 4 milliseconds.

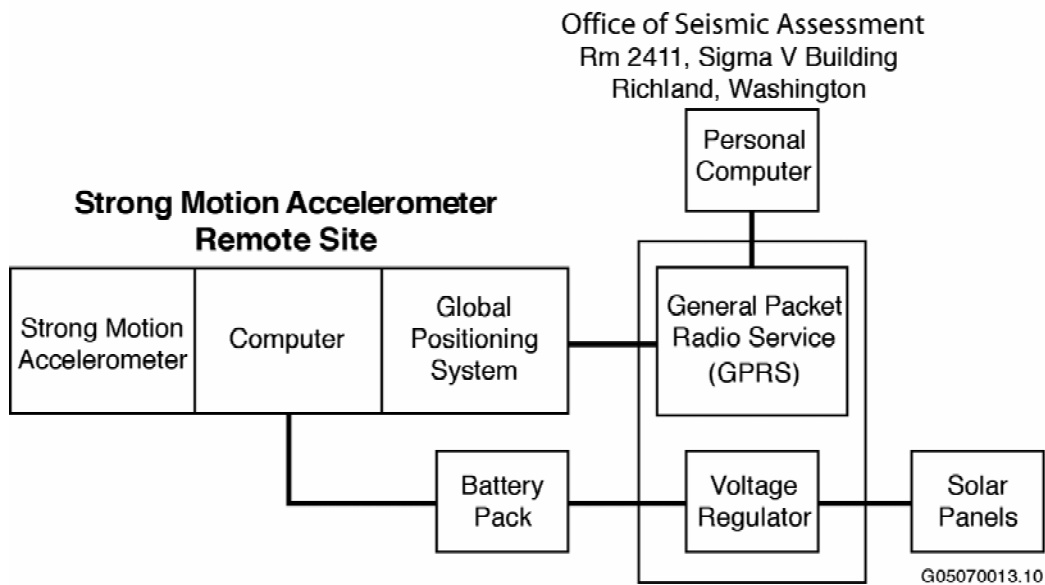
---

<sup>1</sup> The GPS antenna is mounted on the enclosure at the rear of the solar array.



**Table 2.5.** Instrument Parameters for the Kinometrics ETNA™ System in the Hanford SMA Network

Parameter	Value or Range
<b>Sensor</b>	
Type	Tri-Axial Force Balance Accelerometer orthogonally oriented with internal standard
Full-Scale	$\pm 2 \text{ g}^{(a)}$
Frequency Range	0–50 Hz
Damping	Approximately 70% critical <sup>(a)</sup>
<b>Data Acquisition</b>	
Number of Channels	3
Sample Rate	18-bit resolution @ 200 samples/second
Digital Output	Real-time, RS-232 Output Stream
<b>Seismic Trigger</b>	
Filter	0.1–12.5 Hz
Trigger level	$0.1\% \text{ g}^{(b)}$
Alarm (call-out) Threshold	Not activated
Pre-Event Memory	10 sec
Post-Event Time	40 sec
(a) Setting is dependent on instrument calibration.	
(b) See Section 2.2.4 for discussion of trigger thresholds.	



**Figure 2.3.** Schematic Diagram of a Strong Motion Accelerometer Installation

### 2.2.3 Strong Motion Accelerometer Operations Center

The combined operations, data recording, data interpretation, and maintenance facility is located in the Sigma V Building and is operated by the HSAT.

### 2.2.4 Strong Motion Operational Characteristics

The signals from the three-accelerometer channels at each site are digitized with a 24-bit digitizer and temporarily stored in a memory buffer. The sampling rate of the digitizer is set to 200 samples/second. The three channels are monitored for signals that equal or exceed a programmable trigger threshold.

When one accelerometer channel is triggered, the other channels automatically record. The nominal threshold used is 0.05% of the full-scale range of 2.0 g (g is the acceleration of gravity, 9.8 m/s<sup>2</sup> or 32 ft/s<sup>2</sup>) or 0.001 g. Threshold trigger levels are adjusted to trigger infrequently on the noise sources (e.g., vehicles, sonic booms) near each site. This provides ground motion data for smaller, non-damaging earthquakes that can be useful in estimating the ground motion expected from larger earthquakes, and to confirm correct operation of the instruments by analyzing the smaller-amplitude triggers. The recorders store information for 10 seconds before the trigger threshold is exceeded and for 40 seconds after the trigger ceases to be exceeded.

## 3.0 Earthquake Catalog Description

Seismic Assessment Project staff uses an interactive program XPED developed at the University of Washington to determine earthquake locations and magnitudes. This program operates on the sections of time saved in files by the trigger algorithm of the Earthworm system. It provides the user with the ability to measure the arrival times and durations of seismic waves from earthquakes and determine the locations and magnitudes of the events. Locations of teleseismic and regional earthquakes are interpreted and saved for operational and quality review and documentation, and are not reported here. Local earthquakes near the Hanford Site (46°-47°N latitude, 119° -120°W longitude) are reported in this report (Table 3.2). Other earthquakes in southeast Washington are kept on file.

### 3.1 Coda Length Magnitude

Coda-length magnitude ( $M_c$ ), an estimate of local magnitude ( $M_L$ ) (Richter 1958), is calculated using the coda-length/magnitude relationship determined for Washington State by Crosson (1972).

This relationship is:

$$M_c = 2.82 \log (D) - 2.46,$$

where D is the duration of the observed signal.

### 3.2 Velocity Model

The program XPED uses the velocities and layer depths given in Table 3.1. This model does not include a surficial layer for the Hanford formation or Ringold Formation sediments because most stations are located on basalt. Time corrections, which account for elevation, or local differences in the velocity model (i.e., stations on sedimentary layers), are determined empirically from sets of accurately-located earthquakes and explosions in the region.

### 3.3 Quality Factors (Q)

XPED assigns a two-letter **Quality factor** (Table 3.2) that indicates the general reliability of the solution (**A** is best quality, **D** is worst). Similar quality factors are used by the USGS for events located with the computer program HYPO71. The first letter of the quality code is a measure of the hypocenter quality based primarily on travel time residuals. For example: Quality **A** requires a root-mean-square residual (**RMS**) less than 0.15 seconds while a **RMS** of 0.5 seconds or more is **D** quality (other estimates of the location uncertainty also affect this quality parameter). The second letter of the quality code is related to the spatial distribution of stations that contribute to the event's location, including the number of stations (**NS**), the number of p-wave and s-wave phases (**NP**), the largest gap in event-station azimuth distribution (**GAP**), and the closest distance from the epicenter to a station (**DMIN**). Quality **A** requires a solution with **NP** >8, **GAP** <90°, and **DMIN** <5 km (or the hypocenter depth if it is greater than 5 km). If **NP** ≤5, **GAP** >180°, or **DMIN** >50 km, the solution is assigned Quality **D**.

**Table 3.1.** Local Seismic Data, October 1, 2004 to September 30, 2005

Event ID	Type	Date	Time	Latitude	Longitude	Depth	Mag	NS/NP	Gap	Dmin	RMS	Q	Location
04100403562		04/10/04	03:56:47.86	46N35.67	119W13.14	16.31	-0.2	13/20	79	8	0.09	AA	21 km NNE of 400 Area
04100623285	P	04/10/06	23:29:03.74	46N18.56	119W25.46	0.24		6/06	179	1	0.38	CC	11 km WNW of Richland
04101201585		04/10/12	01:59:16.61	46N26.58	119W37.37	16.61	-0.5	9/10	153	3	0.06	AC	13 km S of 200 West
04102719461	P	04/10/27	19:46:35.76	46N16.03	119W23.44	3.66		8/08	231	4	0.05	AD	8 km WSW of Richland
04103106015		04/10/31	06:02:21.33	46N29.11	119W21.19	0.03	0.5	7/09	144	8	0.06	AC	6 km N of 400 Area
04110504280		04/11/05	04:29:25.15	46N27.28	119W00.51	11.82	0.4	12/16	220	14	0.09	AD	23 km ENE of 300 Area
04111418541		04/11/14	18:54:30.17	46N51.80	119W23.90	20.53	-0.4	13/13	107	4	0.07	AB	18 km WNW of Othello
04111419182		04/11/14	19:18:48.36	46N51.53	119W23.36	19.31	-0.1	11/15	94	3	0.08	AB	17 km WNW of Othello
04111519010		04/11/15	19:01:29.23	46N32.47	119W49.85	7.44	0.4	4/05	270	9	0.14	CD	15 km W of 200 West
04112221550		04/11/22	21:55:22.83	46N31.93	119W53.42	7.87	0.3	5/07	284	13	0.34	CD	20 km W of 200 West
04112319555		04/11/23	19:56:20.07	46N32.63	119W52.83	5.38	0.4	5/06	292	11	0.15	BD	19 km W of 200 West
04112510441		04/11/25	10:44:31.69	46N00.19	119W41.97	17.49	1.0	26/29	163	14	0.16	BC	23 km SSE of Prosser
04120808135		04/12/08	08:14:21.33	46N21.96	119W01.90	3.22	0.7	15/18	239	20	0.12	AD	15 km NNE of Pasco
04121019225		04/12/10	19:23:20.09	46N32.23	119W51.01	0.02	0.3	4/06	279	10	0.15	BD	16 km W of 200 West
04121301095		04/12/13	01:10:15.92	46N22.56	119W02.47	4.84	0.1	7/09	150	19	0.22	BC	16 km NNE of Pasco
04121410020		04/12/14	10:02:29.72	46N27.48	119W38.40	17.90	-0.7	7/08	162	1	0.04	AC	11 km S of 200 West
04121903234		04/12/19	03:23:59.85	46N03.83	119W44.67	12.26	0.9	8/13	180	17	0.21	BC	16 km S of Prosser
04121903245		04/12/19	03:24:52.01	46N03.32	119W46.23	12.68	0.7	12/17	151	18	0.16	BC	17 km S of Prosser
04121903261		04/12/19	03:26:12.44	46N03.35	119W45.19	13.09	1.0	11/18	146	18	0.11	AC	17 km S of Prosser
04121903270		04/12/19	03:27:03.71	46N07.21	119W45.02	14.97	0.4	3/04	319	11	0.00	AD	10 km S of Prosser
04121903272		04/12/19	03:27:23.07	46N02.40	119W26.34	19.00	-0.4	4/06	244	27	0.21	DD	29 km SSW of Richland
04121903275		04/12/19	03:28:13.46	46N03.49	119W44.34	13.33	0.7	6/12	184	17	0.13	AD	17 km S of Prosser
04121903284		04/12/19	03:29:03.03	46N07.38	119W33.42	76.70	-0.5	7/07	184	14	0.47	DD	19 km ESE of Prosser
04121903285		04/12/19	03:29:20.52	46N02.70	119W43.26	19.94	0.4	5/08	179	18	0.09	BD	18 km SSE of Prosser
04121903292		04/12/19	03:29:44.65	46N03.71	119W43.66	11.44	0.9	9/10	175	17	0.28	CC	16 km S of Prosser
04121903294		04/12/19	03:30:23.49	46N03.69	119W45.40	11.72	0.7	9/11	184	17	0.26	BD	2 km S of Prosser

**Table 3.2.** (contd)

Event ID	Type	Date	Time	Latitude	Longitude	Depth	Mag	NS/NP	Gap	Dmin	RMS	Q	Location
04121903313		04/12/19	03:31:31.00	46N07.63	119W43.98	14.52	0.6	6/07	185	10	0.25	BD	9 km SSE of Prosser
04121903315		04/12/19	03:32:14.44	46N04.10	119W46.72	11.27	1.0	10/12	186	17	0.12	AD	15 km S of Prosser
04121907090		04/12/19	07:09:24.31	46N03.78	119W44.42	11.84	1.7	27/28	109	17	0.12	AD	16 km S of Prosser
04121907100		04/12/19	07:10:05.41	46N04.14	119W43.88	12.04	1.4	18/24	280	16	0.22	BD	16 km S of Prosser
04121907125		04/12/19	07:13:13.45	46N03.71	119W45.52	12.97	0.8	12/16	185	17	0.16	BD	16 km S of Prosser
04122022513	P	04/12/20	22:51:54.07	46N56.37	119W36.05	0.04		13/14	84	8	0.27	BB	29 km E of Vantage
05010301145		05/01/03	01:15:17.72	46N27.47	119W00.28	3.54	0.1	7/11	220	14	0.14	AD	24 km ENE of 300 Area
05010310394		05/01/03	10:40:05.26	46N27.03	119W00.22	3.43	-0.1	6/09	243	14	0.13	AD	24 km ENE of 300 Area
05011223151		05/01/12	23:15:29.63	46N57.64	119W34.05	17.48	0.0	5/06	259	5	0.16	BD	28 km SW of Moses Lake
05011400405	P	05/01/14	00:41:09.04	46N59.07	119W38.38	17.72		6/06	289	11	0.40	DD	26 km E of Vantage
05011501234		05/01/15	01:24:06.85	46N31.42	119W41.56	10.45	-1.1	5/07	131	1	0.08	AD	6 km SW of 200 West
05011501235		05/01/15	01:24:15.84	46N31.07	119W41.07	11.19	-1.1	4/06	139	2	0.12	BD	6 km SW of 200 West
05011723035	P	05/01/17	23:04:19.10	46N54.21	119W37.53	0.02		14/14	78	11	0.38	CC	28 km ESE of Vantage
05012000162	P	05/01/20	00:38:23.46	46N52.91	119W36.90	2.15		14/14	71	11	0.08	AC	27 km N of 100-K Area
05012100572	P	05/01/21	00:57:47.20	46N52.90	119W37.64	0.04		14/14	88	12	0.10	AC	27 km N of 100-K Area
05012108211		05/01/21	08:21:38.29	46N09.38	119W30.92	10.33	1.6	17/19	265	14	0.09	AD	20 km ESE of Prosser
05012113043		05/01/21	13:05:02.12	46N09.80	119W31.23	8.41	0.5	6/08	270	13	0.04	AD	20 km ESE of Prosser
05013012361		05/01/30	12:36:36.83	46N27.89	119W43.59	15.24	-0.4	6/09	259	5	0.05	AD	12 km SSW of 200 West
05013113580		05/01/31	13:58:31.46	46N34.86	119W48.39	6.06	-0.2	4/06	265	5	0.05	AD	13 km WNW of 200 West
05020120332	X	05/02/01	20:33:53.17	46N16.81	119W32.97	0.44		10/10	156	8	0.06	AC	19 km ENE of Prosser
05020300411	P	05/02/03	00:41:36.88	46N52.09	119W33.88	0.40		6/06	192	10	0.03	AD	25 km N of 100-K Area
05020300554	P	05/02/03	00:55:52.16	46N53.70	119W36.26	2.09		8/08	166	10	0.36	CC	28 km N of 100-K Area
05020323510	P	05/02/03	23:51:17.79	46N53.86	119W36.85	6.95		8/08	116	10	0.09	AB	29 km N of 100-K Area
05020514073		05/02/05	14:07:53.48	46N23.09	119W41.18	20.47	-0.2	7/10	193	7	0.06	AD	20 km S of 200 West
05020518431		05/02/05	18:43:33.75	46N04.90	119W21.38	7.27	0.9	8/11	269	24	0.07	AD	23 km SW of Kennewick
05020900032		05/02/09	00:03:49.61	46N34.74	119W48.42	3.78	0.0	6/09	208	5	0.12	AD	13 km W of 200 West

**Table 3.2.** (contd)

Event ID	Type	Date	Time	Latitude	Longitude	Depth	Mag	NS/NP	Gap	Dmin	RMS	Q	Location
05021506241		05/02/15	06:24:35.54	46N34.92	119W48.64	5.97	-0.3	4/07	269	5	0.04	AD	14 km WNW of 200 West
05022520025	P	05/02/25	20:03:15.09	46N14.99	119W42.68	0.27		7/07	166	4	0.15	BC	7 km NE of Prosser
05031108282		05/03/11	08:28:49.25	46N49.74	119W18.72	0.03	0.5	15/18	122	5	0.13	AB	11 km W of Othello
05031216163		05/03/12	16:17:03.07	46N27.08	119W37.90	16.75	0.3	9/11	149	2	0.05	AC	12 km S of 200 West
05031417034		05/03/14	17:03:59.42	46N58.43	119W57.53	1.92	1.4	27/27	61	3	0.14	AA	3 km NE of Vantage
05031821400	P	05/03/18	21:40:25.52	46N10.47	119W16.10	0.04		13/13	108	18	0.13	AC	12 km WSW of Kennewick
05041015414		05/04/10	15:42:06.06	46N34.83	119W48.57	5.16	-0.2	05/07	267	5	0.06	AD	13 km W of 200 West
05042017273		05/04/20	17:27:52.68	46N14.56	119W27.27	0.02	0.0	10/10	212	18	0.31	CD	13 km WSW of Richland
05042713190		05/04/27	13:19:31.67	46N44.22	119W20.62	0.02	0.5	15/18	101	7	0.07	AB	17 km SW of Othello
05042713244		05/04/27	13:25:06.70	46N44.35	119W20.34	0.32	0.1	10/10	103	7	0.07	AB	16 km SW of Othello
05042818243		05/04/28	18:25:02.15	46N34.71	119W48.41	3.93	-0.1	6/09	208	5	0.13	AD	13 km W of 200 West
05051021134	P	05/05/10	21:13:57.91	46N10.59	119W15.53	0.63		9/09	191	19	0.11	AD	11 km WSW of Kennewick
05051221585	P	05/05/12	21:59:07.57	46N13.92	119W28.03	2.12		5/05	214	7	0.14	CD	15 km WSW of Richland
05051313070		05/05/13	13:07:25.50	46N33.24	119W48.23	5.56	-0.5	4/06	254	7	0.07	AD	13 km W of 200 West
05051313074		05/05/13	13:08:10.16	46N33.38	119W48.14	4.40	-0.1	6/10	253	7	0.09	AD	13 km W of 200 West
05051321051	P	05/05/13	21:06:86.23	46N10.76	119W15.69	0.53		7/07	191	18	0.18	BD	11 km WSW of Kennewick
05052512294		05/05/25	12:29:56.46	46N57.81	119W58.28	2.06	1.3	14/14	104	2	0.12	AB	1 km ENE of Vantage
05052816195		05/05/28	16:20:16.85	46N44.87	119W24.88	2.90	-0.2	5/08	154	3	0.09	AD	18 km NE of 100-K Area
05060112293		05/06/01	12:29:50.11	46N57.95	119W58.47	0.31	1.0	7/07	177	1	0.16	BC	1 km NE of Vantage
05060312244		05/06/03	12:24:56.35	46N57.91	119W58.79	1.49	0.9	8/08	144	1	0.18	BC	1 km NNE of Vantage
05060421520		05/06/04	21:52:29.18	46N06.45	119W55.30	15.83	1.0	9/09	199	21	0.09	BD	16 km SW of Prosser
05060621065		05/06/06	21:07:17.28	46N34.50	119W47.40	0.40	0.0	5/09	202	4	0.15	AD	12 km W of 200 West
05060621100		05/06/06	21:10:24.44	46N34.60	119W47.24	0.02	-0.1	6/09	200	4	0.18	BD	12 km W of 200 West
05060706413		05/06/07	06:41:58.96	46N34.63	119W47.88	0.05	-0.3	5/07	206	4	0.15	BD	13 km W of 200 West
05060715180		05/06/07	15:18:33.65	46N13.77	119W34.64	18.13	1.0	24/30	144	8	0.19	BC	15 km E of Prosser
05060822272		05/06/08	22:27:51.44	46N34.49	119W48.07	0.02	0.2	7/12	205	5	0.10	AD	13 km W of 200 West

**Table 3.2.** (contd)

Event ID	Type	Date	Time	Latitude	Longitude	Depth	Mag	NS/NP	Gap	Dmin	RMS	Q	Location
05062203302		05/06/22	03:30:48.62	46N19.18	119W33.24	17.92	-0.1	8/12	225	8	0.08	AD	20 km SW of 400 Area
05062206464		05/06/22	06:47:12.56	46N29.58	119W21.12	5.28	-0.7	4/06	149	7	0.04	AD	7 km N of 400 Area
05062308200		05/06/23	08:20:25.52	46N34.58	119W47.92	2.28	0.3	5/07	255	5	0.14	BD	13 km W of 200 West
05070517032	P	05/07/05	17:03:48.99	46N18.65	119W40.67	0.28		6/06	166	10	0.06	AC	14 km NNE of Prosser
05070621263	P	05/07/06	21:26:59.95	46N16.06	119W23.42	3.65		10/10	209	4	0.07	AD	8 km WSW of Richland
05071301311		05/07/13	01:31:38.87	46N36.32	119W12.69	20.36	2.4	34/36	74	7	0.15	AA	22 km NNE of 400 Area
05071302341		05/07/13	02:34:34.08	46N36.36	119W12.63	18.89	1.4	26/28	75	7	0.14	AA	22 km NNE of 400 Area
05071819265	P	05/07/18	19:27:20.99	46N16.94	119W24.26	0.02		21/21	132	3	0.24	BB	9 km W of Richland
05072810420		05/07/28	10:42:24.50	46N34.37	119W47.55	0.46	0.2	7/09	203	5	0.12	AD	12 km W of 200 West
05080406253		05/08/04	06:25:56.13	46N17.86	119W31.76	18.33	1.1	18/18	115	7	0.14	AB	18 km W of Richland
05081119574	P	05/08/11	19:58:11.13	46N08.00	119W19.75	0.02		16/17	119	20	0.26	BC	17 km S of Richland
05081423010		05/08/14	23:01:24.76	46N44.05	119W28.74	6.44	-0.3	6/08	187	4	0.12	AD	14 km NE of 100-K Area
05090613304		05/09/06	13:31:05.59	46N26.80	119W36.69	16.86	-0.5	7/07	138	4	0.07	AC	13 km W of 200 West
05091418335	P	05/09/14	18:34:20.54	46N16.15	119W23.79	3.99		9/09	128	4	0.10	AB	8 km W of Richland
05092606082		05/09/26	06:08:53.89	46N34.42	119W48.07	3.24	0.8	11/13	205	5	0.09	AD	13 km W of 200 West

### Explanation of Table 3.1

<b>Event ID:</b>	The Earthworm Recording System creates the identification number. XPED uses the year, month, day, and time to create a unique number for each event.
<b>Type:</b>	P is Probable Blast; X is Confirmed Blast; F is Felt Earthquake; blank is local earthquake.
<b>Date:</b>	The year and day of the year in Universal Time Coordinated (UTC). UTC is used throughout this report unless otherwise indicated.
<b>Time:</b>	The origin time of the earthquake given in UTC. To covert UTC to Pacific Standard Time, subtract eight hours; to Pacific Daylight Time, subtract seven hours.
<b>Latitude:</b>	North latitude, in degrees and minutes, of the earthquake epicenter.
<b>Longitude:</b>	West longitude, in degrees and minutes, of the earthquake epicenter.
<b>Depth:</b>	The depth of the earthquake in kilometers (km).
<b>Mag:</b>	The magnitude is expressed as Coda-Length magnitude $M_c$ , an estimate of local magnitude $M_L$ (Richter 1958). If magnitude is blank, a determination was not made.
<b>NS/NP:</b>	Number of stations/number of phases used in the solutions.
<b>Gap:</b>	Azimuthal gap. The largest angle (relative to the epicenter) containing no stations.
<b>DMIN:</b>	The distance from the earthquake epicenter to the closest station
<b>RMS:</b>	The root-mean-square residual (observed arrival times minus the predicted arrival times) at all stations used to locate the earthquake. It is only useful as a measure of quality of the solution when five or more well-distributed stations are used in the solution. Good solutions are normally characterized by RMS values of less than about 0.3 seconds.
<b>Q:</b>	The Quality Factors indicate the general reliability of the solution/location (A is best quality, D is worst). See Section 3.3 of this report, "Quality Factors."



**Table 3.2.** Seismic Velocities for Columbia Basin Stratigraphy (from Rohay et al. 1985)

Depth to Top of Velocity Layer (km)	Stratigraphy	Velocity (km/sec)
0.0	Saddle Mountains and Wanapum Basalts and intercalated Ellensburg Formation	3.7
0.4	Grande Ronde Basalt and pre-basalt sediments	5.2
8.5	Crystalline Basement, Layer 1	6.1
13.0	Crystalline Basement, Layer 2	6.4
23.0	Sub-basement	7.1
38.0	Mantle	7.9

## 4.0 Geology and Tectonic Analysis

The Hanford Site lies within the Columbia Basin, which is an intermontane basin between the Cascade Range and the Rocky Mountains that is filled with Cenozoic volcanic rocks and sediments. This basin forms the northern part of the Columbia Plateau physiographic province (Fenneman 1931) and the Columbia River flood-basalt province (Reidel and Hooper 1989). In the central and western parts of the Columbia Basin, the Columbia River Basalt Group (CRBG) overlies Tertiary continental sedimentary rocks and is overlain by late Tertiary and Quaternary fluvial and glaciofluvial deposits (Campbell 1989; Reidel et al. 1989, 1994; DOE 1988). In the eastern part, a thin (<100 m) sedimentary unit separates the basalt and underlying crystalline basement and a thin (<10 m) veneer of eolian sediments overlies the basalt (Reidel et al. 1989, 1994).

The Columbia Basin has two structural subdivisions or subprovinces: the Yakima Fold Belt and the Palouse Slope. The Yakima Fold Belt includes the western and central parts of the Columbia Basin and is a series of anticlinal ridges and synclinal valleys with major thrust faults along the northern flanks (Figure 4.1) (Reidel and Fecht 1994a, 1994b). The Palouse Slope is the eastern part of the basin and is less deformed than the Yakima Fold Belt with only a few faults and low amplitude, long wavelength folds on an otherwise gently westward dipping paleoslope. Figure 4.2 shows north-south (B-B') and east-west (A-A') cross sections through the Columbia Basin based on surface mapping (Reidel and Fecht 1994a, 1994b), deep boreholes (Reidel et al. 1994), geophysical data (Rohay et al. 1985; DOE 1988), and magnetotelluric data obtained as part of BWIP (DOE 1988).

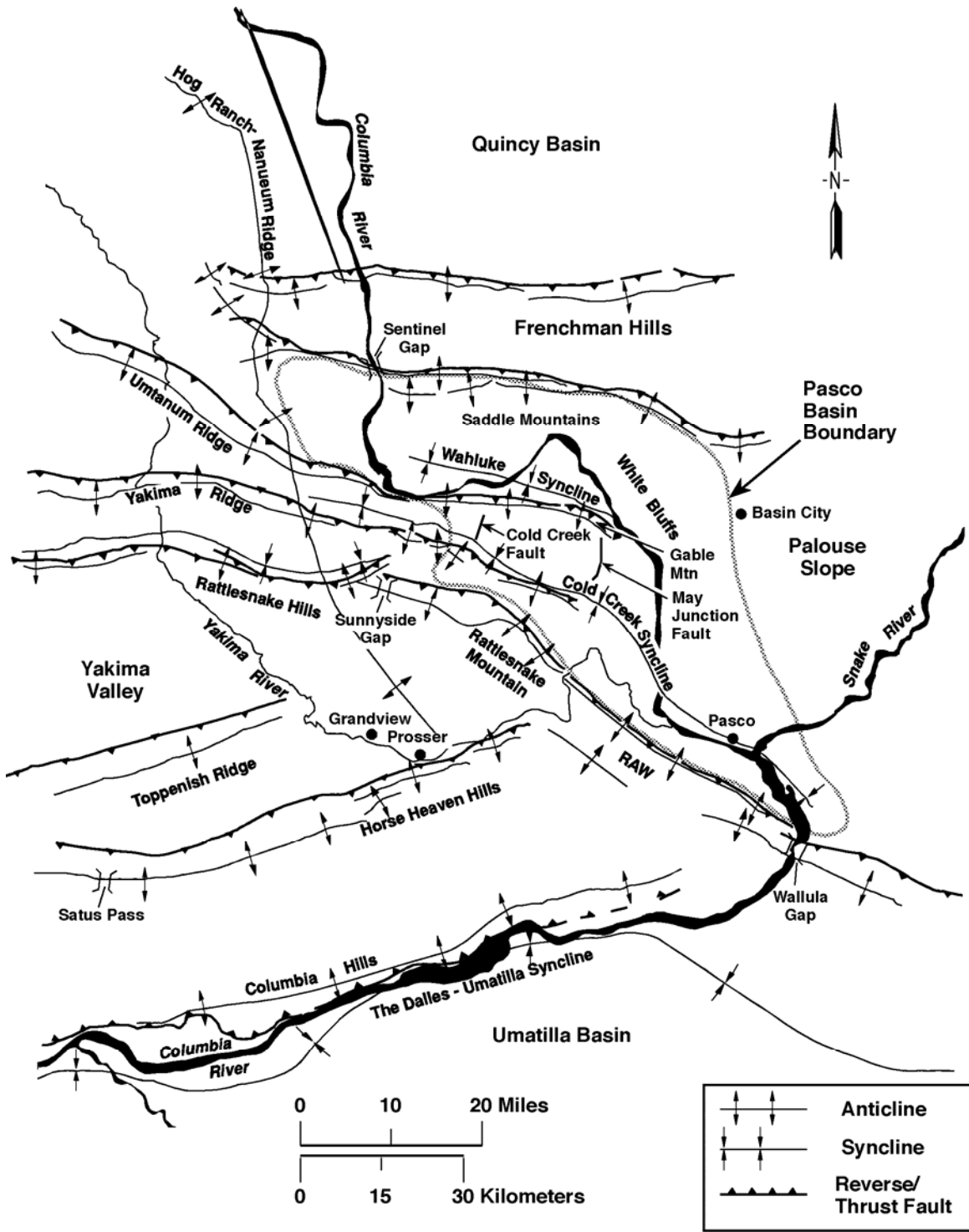
### 4.1 Earthquake Stratigraphy

Studies of seismicity at the Hanford Site have shown that the seismic activity is related to crustal stratigraphy (layers of rock types) (Rohay et al. 1985; DOE 1988). The main geologic units important to earthquakes at the Hanford Site and the surrounding area are:

- The Miocene Columbia River Basalt Group (CRBG)
- Pre-basalt sediments of Paleocene, Eocene, Oligocene, and Early Miocene age
- The crystalline basement consisting of two layers composed of Precambrian and Paleozoic craton
- Mesozoic accreted terranes.

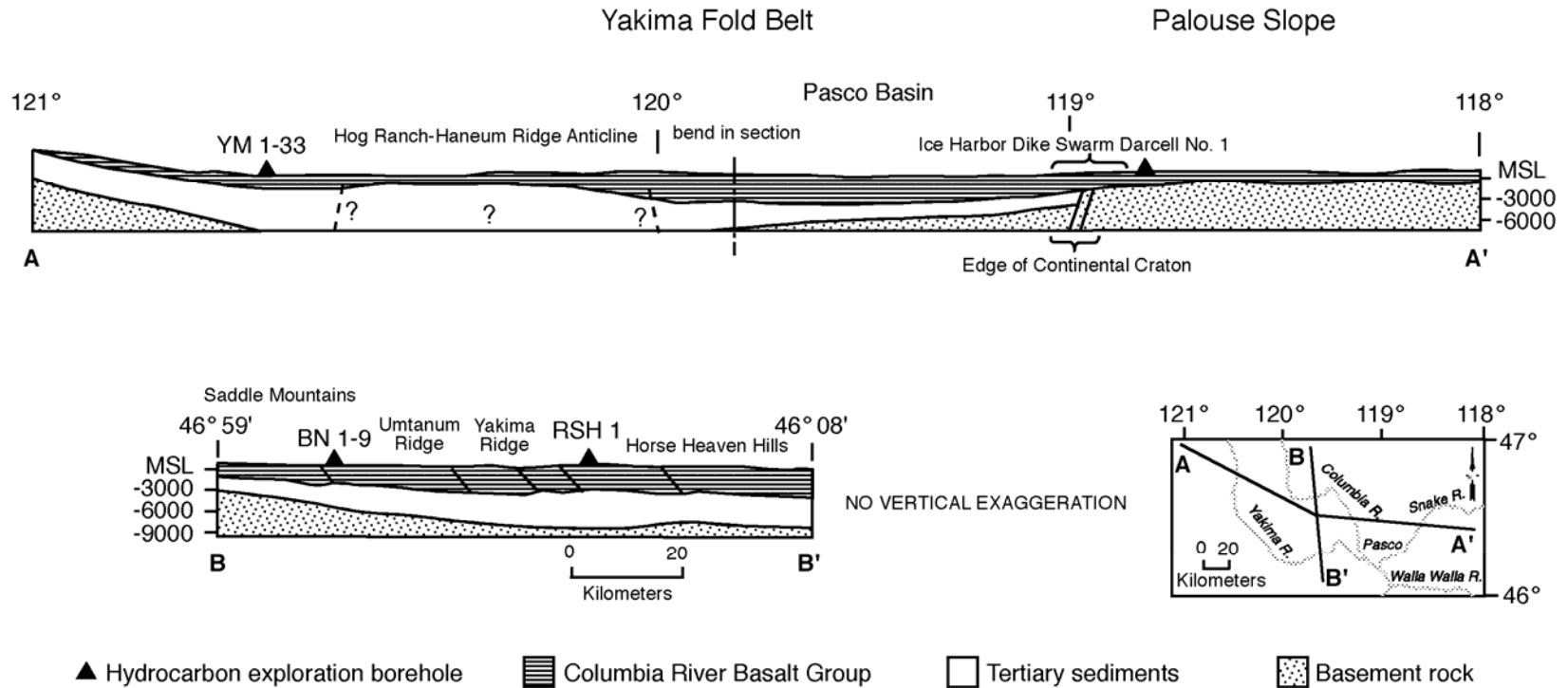
### 4.2 Geologic Structure Beneath the Monitored Area

Between the late 1950s and the mid 1980s, deep boreholes were drilled for hydrocarbon exploration in the Columbia Basin. These boreholes provided accurate measurements of the physical properties of the CRBG and the pre-basalt sediments (Reidel et al. 1989, 1994), but the thickness of the pre-basalt sediments and nature of the crystalline basement are still poorly understood. The difference between the thicknesses listed in Table 4.1 and the thicknesses of the crustal layers in the velocity model in Table 3.1 reflect data specific to UW's crustal velocity model for eastern Washington. Table 4.1 is derived from Reidel et al. (1994) and was developed for the geologic interpretation in this report. The thicknesses of these units are variable across the monitored area. Table 4.1 summarizes the approximate thickness at the borders of the monitored area.



G99090026.5

**Figure 4.1.** Tectonic Map of Columbia Basin Showing Major Seismic Source Structures



G03050062-1

**Figure 4.2.** Geologic Cross Sections Through the Columbia Basin (Reidel et al. 1994)

**Table 4.1.** Thicknesses of Stratigraphic Units in the Monitoring Area (from Reidel et al. 1994)

Stratigraphy	North	South	East	West
Columbia River Basalt Group (includes suprabasalt sediments)	3.0 km	4.5 km	2.2 km	4.2 km
Pre-Basalt Sediments	3.0 km	>4.5 km	0	>6.0 km

The thickness of the basalt and the pre-basalt sediments varies as a result of different tectonic environments. The western edge of the North American craton (late Precambrian/Paleozoic continental margin and Precambrian craton) is located in the eastern portion of the monitored area (Reidel et al. 1994). The stratigraphy on the craton consists of CRBG overlying crystalline basement; the crystalline basement is continental crustal rock that underlies much of the western North America. The stratigraphy west of the craton consists of 4 to 5 km of CRBG overlying at least 6 km of pre-basalt sediments. This in turn overlies accreted terranes of Mesozoic age. The area west of the craton was subsiding during the Eocene and Oligocene, accumulating great thickness of pre-CRBG sediments. Continued subsidence in this area during the Miocene resulted in thicker CRBG compared to that on the craton. Subsidence continues today but at a greatly reduced rate (Reidel et al. 1994).

### 4.3 Tectonic Pattern

Studies have concluded that earthquakes can occur in the following six different tectonic environments (earthquake sources) at the Hanford Site (Geomatrix 1996).

- **Major Geologic Structures.** Reverse/thrust faults in the CRBG associated with major anticlinal ridges such as Rattlesnake Mountain, Yakima Ridge, and Umtanum Ridge could produce some of the largest earthquakes.
- **Secondary faults.** These faults are typically smaller (1 to 20 km) than the main reverse/thrust faults that occur along the major anticlinal ridges (up to 100 km). Secondary faults can be segment boundaries (tear faults) and small faults of any orientation that formed along with the main structure.
- **Swarm areas.** Small geographic areas not known to contain any geologic structures produce clusters of events (swarms), usually in the CRBG in synclinal valleys. These clusters consist of a series of small shocks with no outstanding principal event. Swarms occur over a period of days or months and the events may number into the hundreds and then quit, only to start again at a later date. This differs from the sequence of foreshocks, mainshock, and trailing-off aftershocks that have the same epicenter or are associated with the same fault system. In the past, swarms were thought to occur only in the CRBG. Most swarm areas are in the basalt but swarm events also appear to occur in all geologic layers. However, typically a swarm event at a specific time is usually restricted to one layer. There are seven earthquake swarm areas that are recognized in the Hanford Seismic Network area but this list will be updated as new swarm areas develop. The Saddle Mountains swarm area, Wooded Island swarm area, Wahluke swarm area, Coyote Rapids swarm area, and Horse Heaven Hills swarm area are typically active at one time or another during the year. The other earthquake swarm areas are active less frequently.
- **The entire Columbia Basin.** The entire basin, including the Hanford Site, could produce a “floating” earthquake. A floating earthquake is one that, for seismic design purposes, can happen

anywhere in a tectonic province and is not associated with any known geologic structure. Seismic interpretation classifies it as a random event for purposes of seismic design and vibratory ground motion studies.

- **Basement source structures.** Studies (Geomatrix 1996) suggest that major earthquakes can originate in tectonic structures in the crystalline basement. Because little is known about geologic structures in the crystalline basement beneath the Hanford Site, earthquakes cannot be directly tied to a mapped fault. Earthquakes occurring in the crystalline basement without known sources are treated as random events.
- **The Cascadia Subduction Zone.** This source has been postulated to be capable of producing a magnitude 9 earthquake. Because this source is along the western boundary of Washington State and outside the HSN, the Cascadia Subduction Zone is not an earthquake source that is monitored at the Hanford Site, so subduction zone earthquakes are not reported here. Because any earthquake along the Cascadia Subduction zone can have a significant impact on the Hanford Site or can be felt like the February 2001 Nisqually earthquake, UW monitors and reports on this earthquake source for the DOE. Ground motion from any moderate or larger Cascadia Subduction Zone earthquake is detected by Hanford SMAs and reported (see Section 5.0).

#### 4.4 Depth of Earthquakes

Since records have been kept, most of the earthquakes at the Hanford Site have originated in the CRBG layer. The crystalline basement has had the next greatest amount of earthquakes followed by the pre-basalt sediments. The stratigraphic units for local earthquakes recorded during FY 2005 are listed in Table 4.2.

**Table 4.2.** Number of Local Earthquakes Occurring in Stratigraphic Units

Unit	First Quarter	Second Quarter	Third Quarter	Fourth Quarter	FY 2005
Basalt	4	7	17	2	30 (42%)
Pre-Basalt Sediments	4	1	0	1	6 (8%)
Crystalline Basement	21	8	3	4	36 (50%)
Total	29	16	20	7	72

#### 4.5 Tectonic Activity

##### 4.5.1 Annual Summary

During FY 2005, there were 72 earthquakes that occurred within the Hanford Seismic Monitoring Network (Table 4.3; Figure 4.3). Thirty (42%) events occurred in the CRBG; six (8%) occurred in the pre-basalt sediments; and 36 (50%) events occurred in the crystalline basement. Nineteen (26%) events are interpreted as occurring along major geologic structures; 28 (39%) events are interpreted as occurring in earthquake swarms; and 25 (35%) events are interpreted as random events.

**Table 4.3. Summary of Earthquake Locations for FY 2005**

Seismic Sources		First Quarter 10/01- 12/31	Second Quarter 1/01 - 3/31	Third Quarter 4/01 - 6/30	Fourth Quarter 7/01 - 9/30	FY 2005
Geologic Structure		3	4	10	2	19 (26 %)
Swarm Areas	Frenchman Hills	-		-	-	-
	Saddle Mountains/ Royal Slope	2	1	-	-	3 (4%)
	Wahluke Slope	-	-	3	-	3 (4%)
	Coyote Rapids	-		-	-	-
	Wye	1	-	1	-	2 (3%)
	Wooded Island	-	-	-	-	-
	Cold Creek	-	-	-	-	-
	Rattlesnake Mt.	-	-	-		-
	Horse Heaven Hills	16	3	1	-	20 (28%)
	Total for swarm areas	19	4	5	-	28 (39%)
Random Events		7	8	5	5	25 (35%)
Total for all earthquakes		29	16	20	7	72

#### **4.5.2 First Quarter Earthquakes of FY 2005**

Twenty-nine earthquakes occurred in the Hanford area during the first quarter of FY 2005 (October 1, 2004 through December 31, 2004 [Figure 4.4]) (Table 4.3).

##### **4.5.2.1 Location and Depth of Earthquakes**

###### **4.5.2.1.1 Major Anticlinal Ridges**

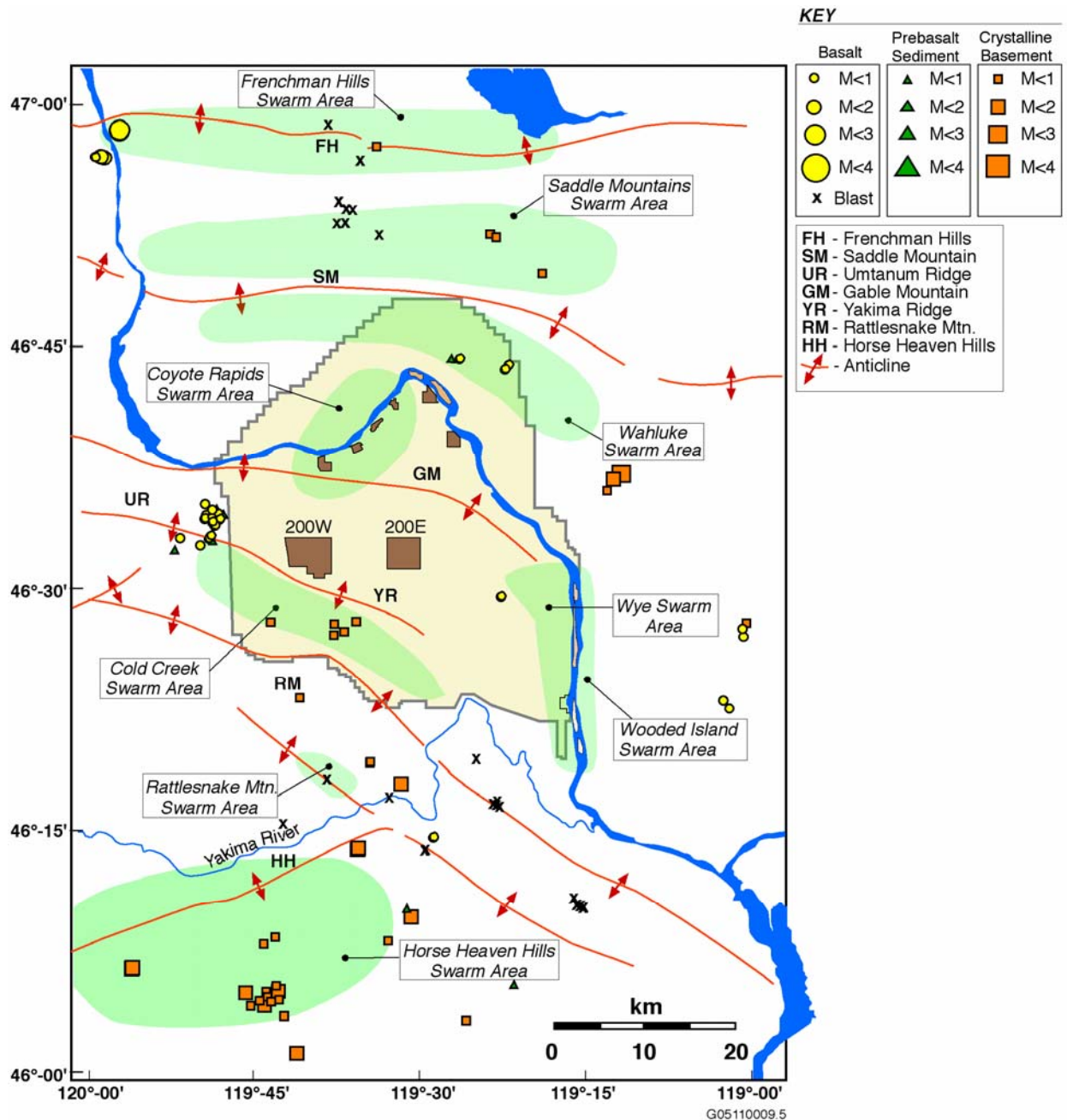
During the first quarter of FY 2005, we interpret three seismic events to have occurred on major geologic structures. On November 22 and 23, two small ( $>0.5 M_c$ ) events occurred near the base of the basalt along a structure feature, the Rattlesnake Hills “extension,” between the Rattlesnake Hills and Yakima Ridge. These events are approximately where the proposed Black Rock Valley dam site is located. On December 10, a small earthquake ( $0.3 M_c$ ) occurred in the basalt along Yakima Ridge.

###### **4.5.2.1.2 Earthquake Swarm Areas**

Nineteen earthquakes were swarm events.

###### ***Saddle Mountains Swarm Area***

Two earthquakes occurred in the Saddle Mountains swarm area on November 14. Both events were approximately  $0 M_c$  and both occurred below the basalt.

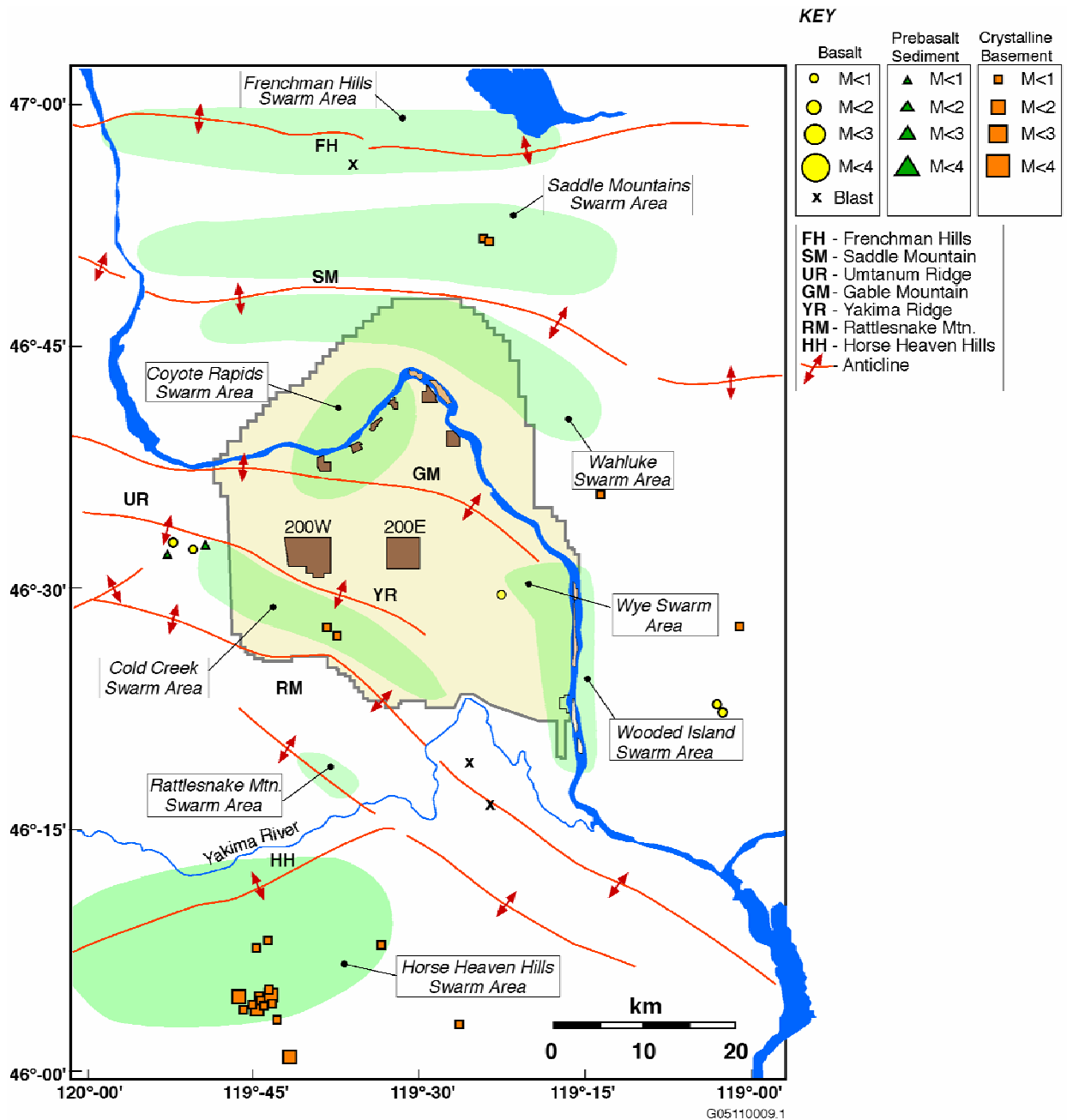


**Figure 4.3.** All Earthquakes Recorded Within the Hanford Monitoring Area During FY 2005 (October 1, 2004-September 30, 2005)

### Wye Swarm Area

On October 31, we interpret one small ( $0.5 M_c$ ) seismic event to have occurred in the Wye swarm area west of the Wooded Island swarm area (Figure 4.4). This event was in the basalt and occurred where similar events previously occurred on April 5, 2004, April 30, 2004, May 9, 2004, August 8, 2004, and August 12, 2004.





**Figure 4.4.** Location of all Earthquakes located in the Hanford Monitoring Area Between October 1, 2004 and December 31, 2004

#### *Horse Heaven Hills Swarm Area*

Between November 25 and December 19, 2004, 16 earthquakes occurred in the Horse Heaven Hills swarm area. The first event was on November 25 and the remainder occurred on December 19. All events were within the crystalline basement and all were small ( $>0 M_c$ ) except for the last three events. The final events were, respectively,  $1.0 M_c$ ,  $1.7 M_c$ , and  $1.4 M_c$ .

This area has been active over the past several years with earthquakes occurring at depths from the shallow basalt to deeper crystalline basement. The scatter in Figure 4.4 is a result of the absence of network coverage on the south side of the swarm area; this is shown by the number of stations that recorded these earthquakes (Table 3.1) and the quality factor for them. A new sensor site, Bickelton became operational in November 2005. This new site will provide coverage in order to better locate earthquakes on the southern part of the Hanford Monitoring Network.

#### **4.5.2.1.3 Random or Floating Events**

During the first quarter of FY 2005, we interpret seven random events to have occurred in the monitoring area. Events that occurred in the pre-basalt sediments and in the crystalline basement are typically classified as random events. This is because there are no known geologic structures that have been identified in the rocks that occur below the Columbia River Basalt Group. However, we now recognize that some events that occur at depths that places them in the pre-basalt sediments and crystalline basement occur in patterns that fit our definition of earthquake swarms (Section 4.4). Those events are now reported in the appropriate sections on earthquake swarms.

The first random event occurred on October 4, 2004 near Ringold Coulee on the eastern side of the Hanford Site. This was a very small event (approximately 0.0  $M_c$ ) that occurred in the crystalline basement. There is no history of earthquakes occurring in that area.

Two small (0.0  $M_c$ ) random event occurred on October 12 and December 14 in the Benson Ranch syncline between Rattlesnake Mountain and Yakima Ridge. Both were deep events (>16 km).

On November 5, a small (0.4  $M_c$ ) earthquake occurred in the crystalline basement (>11 km) on the eastern edge of the monitoring area near Eltopia in Esquatzel Coulee.

A small (0.4  $M_c$ ) random earthquake occurred in the pre-basalt sediment beneath Yakima Ridge on November 15.

Two small earthquakes occurred along the eastern boundary of the monitoring area south of the Eltopia event of November 5. These two events occurred on December 8 and December 13, 2004. Both were in the basalt. The first event was magnitude 0.7 and the second was 0.1. Over the past 5 years there have been several events in this area (e.g., March 23, 1998, May 4, 1998, September 1, 1999, December 22, 2002, and February 4, 2003).

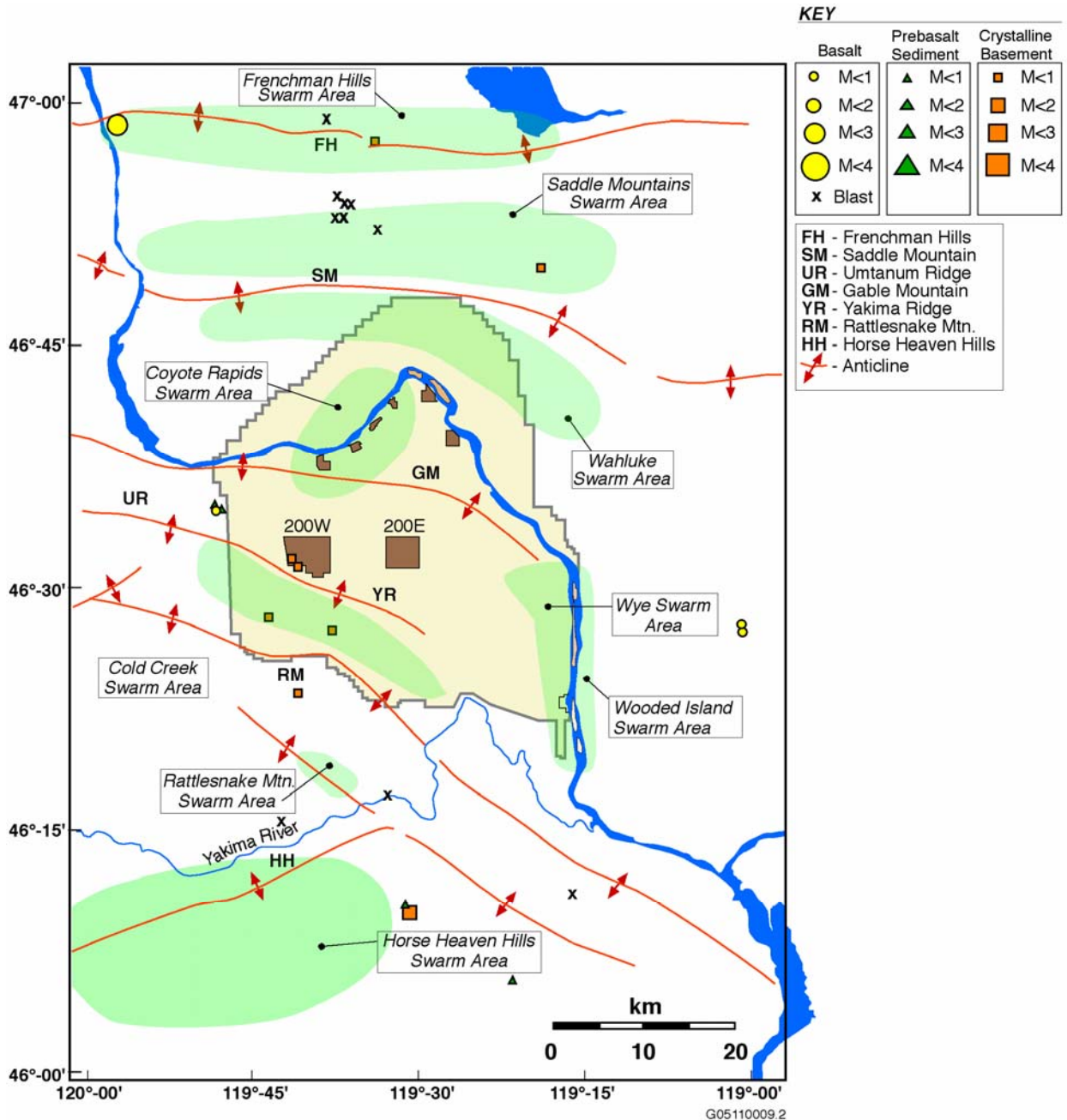
### **4.5.3 Second-Quarter Earthquakes of FY 2005**

Sixteen earthquakes occurred during the second quarter of FY 2005 (January 1, 2005 through March 31, 2005 [Figure 4.5]).

#### **4.5.3.1 Location and Depth of Earthquakes**

##### **4.5.3.1.1 Major Anticlinal Ridges**

During the second quarter of FY 2005, we interpret four seismic events to have occurred on a major geologic structure in the monitoring area.



**Figure 4.5.** All Earthquakes Located Within the Hanford Monitoring Area Between January 1, 2005 and March 30, 2005

On March 14, a 1.4  $M_c$  earthquake occurred in the Columbia River Basalt Group on the Frenchman Hills near Vantage, Washington. The earthquake was centered along the Columbia River on the south flank of the anticline.

Three small earthquakes (all approximately 0.0  $M_c$ ) occurred on the Yakima Ridge anticline about 2 miles northwest of the Yakima Barricade at Hanford (intersection of SR 24 and SR 240). The first event occurred on January 31, the second event was on February 9, and the third event was on February 15. All were located at the same location with depths in or at the base of the basalt.

#### **4.5.3.1.2 Earthquake Swarm Areas**

During the second quarter of FY 2005, we interpret four seismic events to have occurred in swarm areas (Figure 4.5). The Saddle Mountains and Horse Heaven Hills swarm areas were the active swarm areas.

##### ***Saddle Mountains Swarm Area***

On March 11, a 0.5  $M_c$  earthquake occurred in the western part of the Saddle Mountains swarm area. This earthquake was in the basalt and was approximately four miles from the two earthquakes that occurred in the Saddle Mountains swarm area during the first quarter.

##### ***Horse Heaven Hills Swarm Area***

The swarm in the Horse Heaven Hills continued into the second quarter. Three earthquakes were located. The first two occurred on January 21 and both were located in the pre-basalt sediment to crystalline basement. They were in the northern part of the swarm south of the intersection of the northwest and northeast trends of the Horse Heaven Hills. The third occurred on February 5 and was in the pre-basalt sediments. It was located farther east, however, due to the poor sensor station coverage on the south, the locations of these three earthquakes are poor and we consider them to be part of the main swarm.

#### **4.5.3.1.3 Random or Floating Events**

There were eight earthquakes recorded during the second quarter of FY 2005 that we classify as random events.

On January 3, two random events occurred in Esquatzel Coulee along the eastern margin of the network area. Both events were small (approximately 0.0  $M_c$ ) and was located in the basalt. These occurred at the same location as the earthquake of November 5; however, that event occurred below the basalt.

A deep (17.5 km) event occurred beneath the anticlinal axis of the Frenchman Hills on January 12. This earthquake was small (0.0  $M_c$ ).

On January 15, two deep (>10 km) events occurred in the Cold Creek Depression along the Cold Creek syncline. The Cold Creek Depression is southwest of 200-West Area. Both events were approximately 0.0  $M_c$ .

On January 30, a deep (>15 km) earthquake occurred about five miles south of the two earthquakes in the Cold Creek depression. This event was also approximately 0.0  $M_c$  and centered along the northern boundary of Snively Basin.

On February 5, a deep (>20 km) earthquake occurred three miles south of the anticlinal axis for the Rattlesnake Mountain-Snively Basin anticline. This event was approximately 0.0  $M_c$ .

The final random event for the second quarter occurred on March 12, about one mile north of Rattlesnake Mountain where two events from the first quarter, October 12 and December 14, had occurred. All three events were deep (>16 km) and small (>0.4). The event of March 16 was the largest (0.3  $M_c$ ).

#### **4.5.4 Third Quarter Summary of FY 2005**

Twenty earthquakes occurred in the Hanford area during the third quarter of FY 2005 April 1, 2005 through June 30, 2005 (Figure 4.6) (Table 4.3).

##### **4.5.4.1 Location and Depth of Earthquakes**

During the third quarter of FY 2005, five (25%) events occurred in swarm areas, ten (50%) events were classified as having some association with major geologic structures, and five (25%) events were classified as random. Earthquakes typically are classified as random if they occur below the Columbia River Basalt Group. Very little is known about geologic structures in the pre-basalt sediments and crystalline basement so any interpretations are speculative at this time. An earthquake also can be classified as a random event if it occurs in the basalt but is not located near any known geologic structure.

###### **4.5.4.1.1 Major Anticlinal Ridges**

During the third quarter of FY 2005, we interpret 10 seismic events to have occurred on major geologic structures. On April 10, April 28, May 13 (2 events), June 6 (2 events), June 7, June 8, and June 23, a total of nine small (<0.4  $M_c$ ) events occurred in the basalt along Yakima Ridge. These events occurred where three events had occurred during the 2<sup>nd</sup> quarter (January 31<sup>st</sup>, February 9<sup>th</sup>, and February 25<sup>th</sup>), all of which were in the basalt and less than 1.0  $M_c$ . The largest event this quarter was 1.3  $M_c$  on May 25<sup>th</sup> and the second largest was 0.3  $M_c$  on June 23<sup>rd</sup>; these are the first and last events of the quarter.

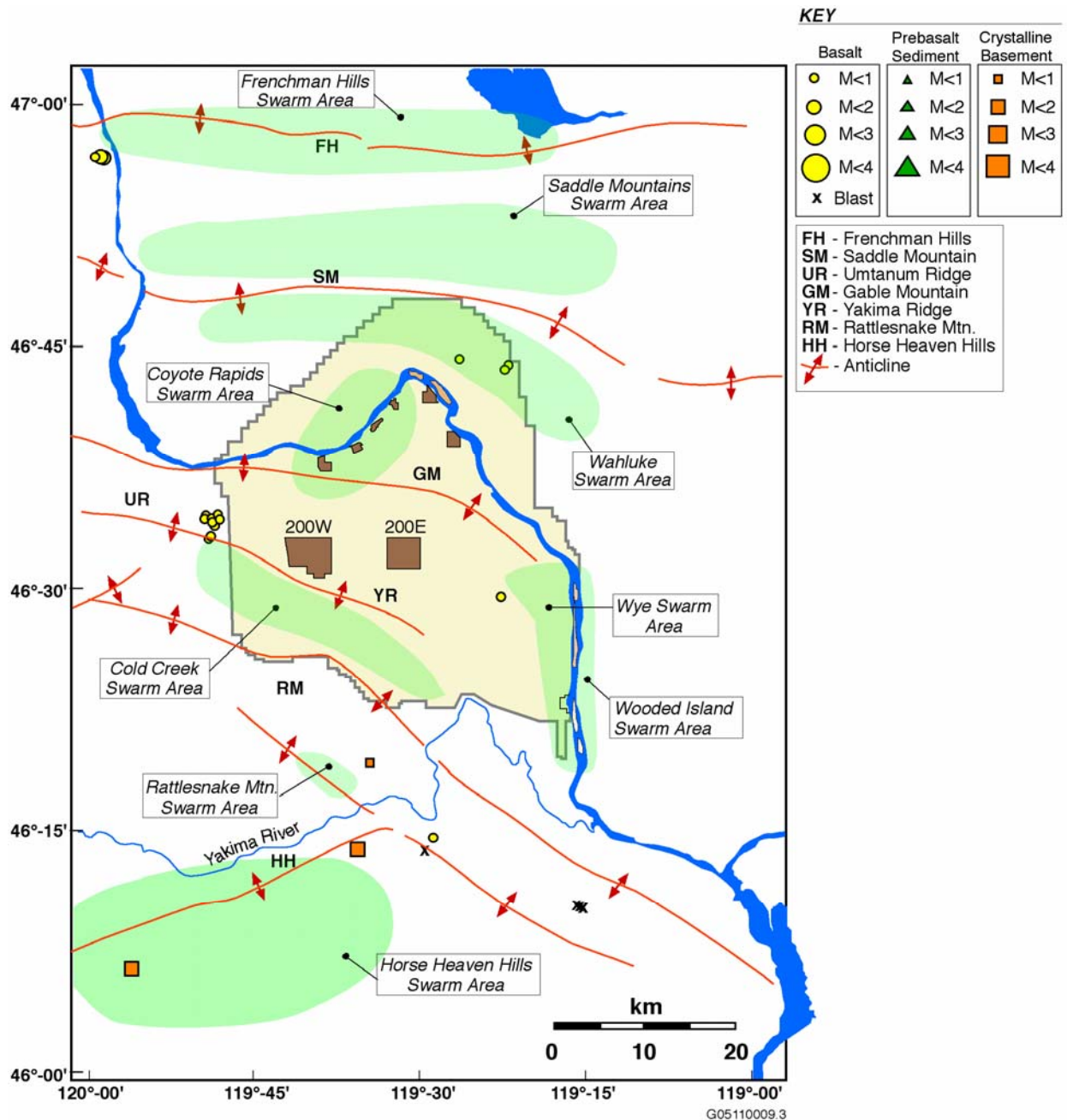
###### **4.5.4.1.2 Earthquake Swarm Areas**

###### ***Wahluke Swarm Area***

Three earthquakes occurred in the Wahluke swarm area (Figure 4.6); two occurred on April 27 and one occurred on May 28. The largest event was approximately 0.5  $M_c$  and all occurred in the basalt. This area has been active in the past. The most recent earthquakes were on March 9, 2003 and May 5, 2003 (two events). Those earthquakes were 0.7, 0.5, and 0.0  $M_c$ , respectively.

###### ***Wye Swarm Area***

On June 22, we interpret one small (approximately 0.0  $M_c$ ) seismic event to have occurred in the Wye swarm area (Figure 4.6) west of the Wooded Island swarm area. This event was in the basalt and occurred where similar events previously occurred on April 5, 2004, April 30, 2004, May 9, 2004, August 8, 2004, August 12, 2004, and October 31, 2004.



**Figure 4.6.** Location of all Earthquakes Located in the Hanford Monitoring Area Between April 1, 2005 and June 30, 2005

### *Horse Heaven Hills Swarm Area*

On June 7, an earthquake occurred in the crystalline basement within the Horse Heaven Hills swarm area (Figure 4.6). This event was small (1.0  $M_c$ ) and occurred south of the intersection of the northwest and northeast trends.

This area has been active over the past several years with earthquakes occurring at depths from the shallow basalt to deeper crystalline basement.

#### **4.5.4.1.3 Random or Floating Events**

During the third quarter of FY 2005, we interpret five random events to have occurred in the monitoring area. Events that occurred in the pre-basalt sediments and in the crystalline basement are typically classified as random events. This is because there are no known geologic structures that have been identified in the rocks that occur below the Columbia River Basalt Group. However, we now recognize that some events that occur in the pre-basalt sediments and crystalline basement fit our definition of earthquake swarms (Section 4.3). Those events are now reported in the appropriate sections on earthquake swarms.

On May 25, June 1, and June 3, a total of three earthquakes occurred 1 km east of Vantage, Washington (Figure 4.6). All were small (the largest was 1.3  $M_c$  on June 1) and all were in the basalt. There is road construction for a new interchange for Interstate 90 near that locality, which may be related to these events. These three events all occurred at approximately 5:30 a.m. PDT on each corresponding day, further suggesting a construction source, but the signals are not typical of blasting events. A 1.4  $M_c$  event occurred there on March 14, 2005.

On June 4, a small (1.0  $M_c$ ) earthquake occurred in the crystalline basement (>15 km) on the western edge of the monitoring area in the Horse Heaven Hills. This event occurred farther west than other earthquakes (Figure 4.6) that we classify as the Horse Heaven Hills swarm area. Tentatively, we are classifying this as a random event.

A small (approximately 0.0  $M_c$ ) earthquake occurred on June 22 on the south slope of Rattlesnake Mountain. The earthquake was small (approximately 0.0  $M_c$ ) and occurred in the crystalline basement (18 km).

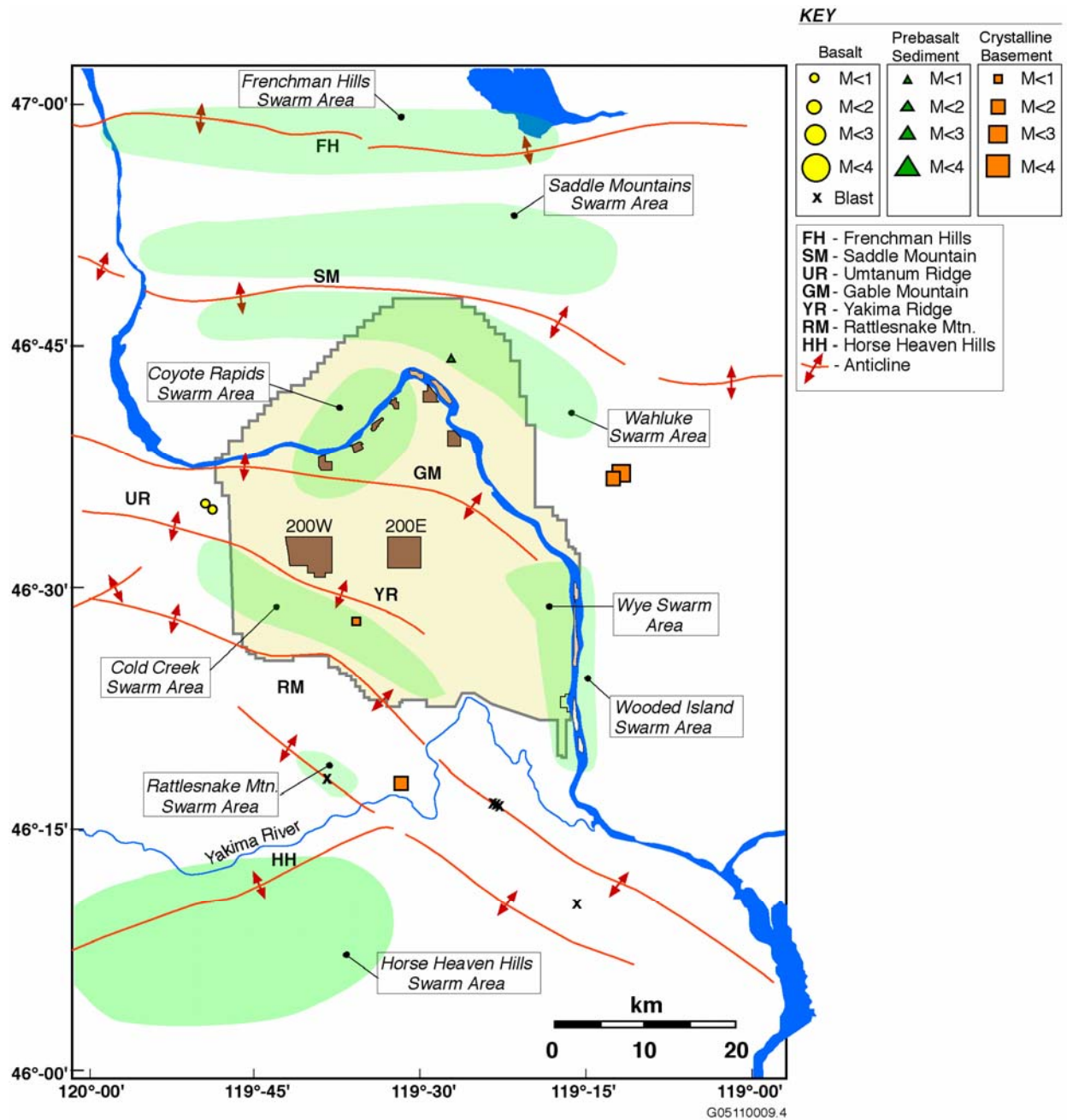
### **4.5.5 Fourth Quarter Summary of FY 2005**

Seven earthquakes occurred in the Hanford area during the fourth quarter of FY 2005 July 1, 2005 through September 30, 2005 (Figure 4.7) (Table 4.3).

#### **4.5.5.1 Location of Earthquakes**

##### **4.5.5.1.1 Major Anticlinal Ridges**

Two earthquakes occurred on Yakima Ridge during the fourth quarter of FY 2005. Both were less than 1.0 M and occurred in the basalt. The first event occurred on July 28 and the second event occurred on September 26. These earthquakes occurred where nine earthquakes occurred during the third quarter and three during the second quarter.



**Figure 4.7.** Location of all Earthquakes Located in the Hanford Monitoring Area Between July 1, 2005 and September 30, 2005

#### 4.5.5.1.2 Earthquake Swarm Areas

No earthquakes occurred in swarm areas during the fourth quarter of FY 2005.

#### 4.5.5.1.3 Random or Floating Events

Five earthquakes are classified as random events during the fourth quarter of FY 2005.



Two random events occurred in the crystalline basement beneath Ringold Coulee just east of the Hanford Site. Both events occurred on July 13 UTC; the first event was approximately 2.4  $M_c$  and the second event was approximately 1.4  $M_c$ . These event occurred near a small (0.0  $M_c$ ) event that occurred on October 4, 2004.

A random event occurred on August 8 on the south side of Rattlesnake Mountain near the Yakima River. This event was small (1.1  $M_c$ ) and occurred in the crystalline basement.

On August 14 a random event occurred in the pre-basalt sediments on the Wahluke Slope. This event was small (approximately 0.0  $M_c$ ) and occurred where three event from the third quarter (two events April 27, and May 28) had occurred. The May 28 earthquake was in the same location as this August event. This area has been active in the past as well.

The last random event for the quarter occurred on September 6 in the crystalline basement beneath the Cold Creek syncline. It was small (approximately 0.0  $M_c$ ) and is an isolated event.

## **5.0 Strong Motion Accelerometer Operations**

The Hanford SMA network has been in continuous operation since November 20, 1998. The nominal threshold used in the SMA network is 0.001 g in order to provide ground motion for smaller, non-damaging earthquakes that can be useful in estimating the ground motion expected from larger earthquakes, and to confirm correct operation of the instruments by analyzing the smaller-amplitude triggers (see Section 2.2).

### **5.1 FY 2005 Triggers of the Hanford SMA Network**

The Hanford SMA network did not trigger from a seismic event during the FY 2005.

## **6.0 Capabilities in the Event of a Significant Earthquake**

The SMA network was designed to provide ground motion data in areas at the Hanford Site that have high densities of people and/or facilities containing hazardous materials in order to insure the Hanford Site is in compliance with DOE Order 420.1, "Facility Safety." The network also allows the HSAP to support Hanford Site emergency services organizations in complying with DOE Order G 420.1-1, Section 4.7, "Emergency Preparedness and Emergency Communications," by providing area ground motion data in the event of an earthquake on the Hanford Site. This section summarizes the capabilities of the HSAT in the event of an earthquake at Hanford.

### **6.1 Use of the SMA Network in the Event of an Earthquake**

Historically, only a few facilities at the Hanford Site had instruments to provide data on peak ground accelerations or any type of ground motion. The present SMA instruments were located so that if an earthquake occurred, ground motion data would be readily available to assess the damage at the 100-K Area, the 200-East and West Areas, and the 300 and 400 Area facilities, which have the greatest concentration of people and also contain hazardous materials (Moore and Reidel 1996).

Many facilities at the Hanford Site have undergone various degrees of seismic analysis either during design or during re-qualification. Although the seismic design of a building may be known, when an earthquake is "felt" in a facility on the Hanford Site, a determination must be made as to the extent of damage before it can be re-occupied and the systems restarted. A "felt" earthquake may not cause any significant damage to a building but, without adequate characterization of the ground motion, initial determination of the building's possibility of having damage may be impossible.

In the event of an earthquake such as the 2001 Nisqually earthquake, building managers, emergency directors, and engineers can obtain ground motion data recorded by the SMA network from the HSAT in the Sigma V Building. This is done through the Hanford Site Emergency Services Organization. Normal hours of operation for the HSAP are between 6 a.m. and 4:30 p.m., Monday through Friday. If a SMA is triggered, the HSAT will download events that were recorded and determine the peak ground accelerations. This information is then passed on to Hanford Emergency Services personnel where the facility engineers can use the data to determine if the ground motion exceeded, is equal to, or is less than the building design. This, along with assessments from trained engineers, allows the facility manager to make a rapid and cost-effective determination on whether a building is safe to re-occupy or should not be used until it has been inspected in more detail. Buildings that have designs exceeding the recorded ground motion could be put back into service very quickly; buildings with designs that are very close to or less than measured ground motion could be given priority for onsite damage inspections.

## 7.0 References

- Campbell NP. 1989. "Structural and Stratigraphic Interpretation of Rocks under the Yakima Fold Belt, Columbia Basin, Based on Recent Surface Mapping and Well Data." In SP Reidel and PR Hooper (eds.), *Volcanism and Tectonism in the Columbia River Flood-Basalt Province Geological Society of America Special Paper 239*, pp. 209-222.
- Crosson RS. 1972. *Small Earthquakes, Structure and Tectonics of the Puget Sound Region*. Bulletin of the Seismological Society of America 62(5):1133-1171.
- DOE. 1988. *Site Characterization Plan for the Reference Location, Hanford, Washington-Consultation Draft*. Report DOE/RW-0164, Vol. 1, U.S. Department of Energy, Washington, D.C.
- DOE Order 420.1. "Facility Safety."
- DOE Order G 420.1-1, Section 4.7. "Emergency Preparedness and Emergency Communications."
- Fenneman NM. 1931. *Physiography of Western United States*. McGraw-Hill, 534 p.
- Geomatrix. 1996. *Probabilistic Seismic Hazard Analysis, DOE Hanford Site, Washington*. WHC-SD-W236A-TI-002, Rev. 1, Westinghouse Hanford Company, Richland, Washington.
- Moore C and SP Reidel. 1996. *Hanford Site Seismic Monitoring Instrumentation Plan*. WHC-SD-GN-ER-30036, Westinghouse Hanford Company, Richland, Washington.
- Reidel SP and KR Fecht. 1994a. *Geologic Map of the Richland 1:100,000 Quadrangle, Washington*. Washington Division of Geology and Earth Resources Open File Report 94-8, 21 p., 1 plate.
- Reidel SP and KR Fecht. 1994b. *Geologic Map of the Priest Rapids 1:100,000 Quadrangle, Washington*. Washington Division of Geology and Earth Resources Open File Report 94-13, 22 p., 1 plate.
- Reidel SP and PR Hooper (eds.). 1989. *Volcanism and Tectonism in the Columbia River Flood-Basalt Province Geological Society of America Special Paper 239*, 386 p.
- Reidel SP, NP Campbell, KR Fecht, and KA Lindsey. 1994. "Late Cenozoic Structure and Stratigraphy of South-Central Washington." In E Cheney and R Lasmanis (eds.), *Regional Geology of Washington State, Washington Division of Geology and Earth Resources Bulletin 80*, pp. 159-180, Olympia, Washington.
- Reidel SP, KR Fecht, MC Hagood, and TL Tolan. 1989. "Geologic Development of the Central Columbia Plateau." In SP Reidel and PR Hooper (eds.), *Volcanism and Tectonism in the Columbia River Flood-Basalt Province Geological Society of America Special Paper 239*, pp. 247-264.
- Richter CF. 1958. *Elementary Seismology*, W. H. Freeman and Company, p. 768.

Rohay AC, DW Glover, and SD Malone. 1985. *Time-Term Analysis of Upper Crustal Structure in the Columbia Basin, Washington*. RHO-BW-SA-435 P, Rockwell Hanford Operations, Richland, Washington.

## Distribution

**No. of  
Copies**

**No. of  
Copies**

**OFFSITE**

Administrator  
Kennewick General Hospital  
P.O. Box 6128  
Kennewick, WA 99336

Dr. R. Carson  
Department of Geology  
Whitman College  
345 Bayer Avenue  
Walla Walla, WA 99362

T. Conrads  
Parsons Constructors, Inc.  
3005 E. Ainsworth Street  
Pasco, WA 99301

G. Crawford  
Earthquake Program Manager  
Washington Emergency Management  
Division  
Building 20, M/S: TA-20  
Camp Murray, WA 98430-5122

Idaho Geological Survey  
Morrill Hall  
University of Idaho  
P.O. Box 443014  
Moscow, ID 83844-3014

J. Kimball  
NNSA NA 2.1  
19901 Germantown Road  
Germantown, MD 20874

S. Lilligren  
Nez Perce Tribe  
P.O. Box 365  
Lapwai, ID 83540

J. Litehiser  
Bechtel National, Inc.  
P.O. Box 193965  
San Francisco, CA 94119-3965

2 Oregon Department of Geology and  
Mineral Industries  
Suite 965, 800 NE Oregon Street #28  
Portland, OR 97232  
ATTN: Library  
I. Madin

N. Rasmussen  
3140 Ravenshoe Drive  
Las Vegas, NV 89134

P. Rizzo  
105 Mall Boulevard  
Monroeville, PA 15146

M. Stickney  
Montana Tech University  
Earthquake Studies Office  
Butte, MT 59701

A. Tallman  
1940 Quail Court  
West Richland, WA 99353

**No. of  
Copies**

5 University of Washington  
Geophysics Program  
P.O. Box 351650  
Seattle, WA 98195-1650  
ATTN: R. Crosson  
R. Ludwin  
S. Malone  
R. Steele

2 University of Washington  
U.S. Geological Survey  
P.O. Box 351650  
Seattle, WA 98195  
ATTN: C. Weaver  
T. Yelin

U.S. Fish and Wildlife Service  
3250 Port of Benton Boulevard  
Richland, WA 99352

2 U.S. Geological Survey  
Mail Stop 977  
345 Middlefield Road  
Menlo Park, CA 94025  
ATTN: T. Brocher

3 Washington Division of Geology and Earth  
Resources  
P.O. Box 47007  
Olympia, WA 98504-7007  
ATTN: Library  
T. Walsh

Washington State University  
Department of Geology  
P.O. Box 643420  
Pullman, WA 99164-2812

**No. of  
Copies**

R. Whale  
Shell E&P  
200 N. Dairy Ashford  
Houston, TX 77079

I. G. Wong  
URS Corporation  
1333 Broadway, Suite 800  
Oakland, CA 94612

J. Zollweg  
Boise State University  
Department of Geosciences  
Boise, ID 83725

**ONSITE****7 DOE Richland Operations Office**

K. L. Flynn	A6-35
R. D. Hildebrand	A6-38
L. F. Miller	H6-60
M. R. Moreno	H6-60
J. G. Morse	A6-38
Y. T. Sherman	A6-35
K. M. Thompson	A6-38

**Bechtel Hanford, Inc.**

K. R. Fecht	H9-01
-------------	-------

**5 CH2M HILL Hanford Group, Inc.**

F. J. Anderson	H6-03
D. D. Bachland	S5-15
J. R. Freeman-Pollard	R3-77
D. T. Heimberger	S5-25
F. M. Mann	H6-03

**No. of  
Copies**

**No. of  
Copies**

**Duratek Federal Services Hanford**

**Washington State Department of Ecology**

R. T. Wilde H8-44

J. Caggiano H0-57

**9 Fluor Hanford, Inc.**

**16 Pacific Northwest National Laboratory**

M. E. Brown G5-51

R. E. Clayton K6-75

D. A. Conners T3-28

J. S. Fruchter K6-96

J. T. Curtis B3-15

D. C. Hartshorn K6-75

S. A. Fargo H8-60

D. G. Horton K6-75

S. M. Faulk A3-05

P. E. Moore J2-09

B. H. Ford E6-35

B. E. Opitz K6-75

T. P. Morales A3-05

S. P. Reidel (5) K6-75

M. I. Wood H8-44

A. C. Rohay K6-75

M. T. York N2-02

H. T. Schaefer K6-81

**Stoller**

M. D. Sweeney K6-75

Hanford Technical Library (2) P8-55

R. McCain B2-62