



BNL-100968-2013-CP

Wake fields due to wall roughness for realistic surfaces

A.V. Fedotov, I. Pinayev
BNL, Upton, NY 11973, USA

A. Novokhatski
SLAC National Accelerator Laboratory
Menlo Park, CA 94025, USA

Presented at the North American Particle Accelerator Conference (NA-PAC 13)
Pasadena, CA
September 29 – October 4, 2013

Collider-Accelerator Department
Brookhaven National Laboratory

U.S. Department of Energy
DOE Office of Science

Notice: This manuscript has been authored by employees of Brookhaven Science Associates, LLC under Contract No. DE-AC02-98CH10886 with the U.S. Department of Energy. The publisher by accepting the manuscript for publication acknowledges that the United States Government retains a non-exclusive, paid-up, irrevocable, world-wide license to publish or reproduce the published form of this manuscript, or allow others to do so, for United States Government purposes.

This preprint is intended for publication in a journal or proceedings. Since changes may be made before publication, it may not be cited or reproduced without the author's permission.

DISCLAIMER

This report was prepared as an account of work sponsored by an agency of the United States Government. Neither the United States Government nor any agency thereof, nor any of their employees, nor any of their contractors, subcontractors, or their employees, makes any warranty, express or implied, or assumes any legal liability or responsibility for the accuracy, completeness, or any third party's use or the results of such use of any information, apparatus, product, or process disclosed, or represents that its use would not infringe privately owned rights. Reference herein to any specific commercial product, process, or service by trade name, trademark, manufacturer, or otherwise, does not necessarily constitute or imply its endorsement, recommendation, or favoring by the United States Government or any agency thereof or its contractors or subcontractors. The views and opinions of authors expressed herein do not necessarily state or reflect those of the United States Government or any agency thereof.

WAKE FIELDS DUE TO WALL ROUGHNESS FOR REALISTIC SURFACES*

A.V. Fedotov[#], I. Pinayev, BNL, Upton, NY 11973, USA

A. Novokhatski, SLAC National Accelerator Laboratory, Menlo Park, CA 94025, USA

Abstract

Wake fields due to the wall roughness of the vacuum chamber can catch up to the bunch causing energy spread and emittance growth. Several theoretical models were developed in the past which showed rather different importance of this effect. Some models suggest that the wall roughness effect can be minimized if the vacuum chamber surface is characterized by a large aspect ratio of the surface roughness (characteristic length to the height of the surface bumps). To explore these effects several surfaces were measured and direct numerical simulations were performed for such realistic surfaces. The studies were done both for the long bunches to provide estimates of this effect for parameters of the eRHIC project, as well as for very short bunches to explore parameter space of the wall roughness experiment proposed at BNL's ATF.

INTRODUCTION

This work was originally motivated by beam dynamics studies for the eRHIC project [1-3], which is a proposed upgrade of the Relativistic Heavy Ion Collider (RHIC). The present eRHIC design is based on the multi-pass electron beam transport in existing tunnel of RHIC. As a result of a high peak current and a very long beam transport, consideration of various collective beam dynamics effects becomes important [2, 3]. The contribution of the wall roughness to the coupling impedance (wake potential) can become significant, especially when the size of the vacuum chamber is small and length of the electron bunch is short.

Some models indicate that the wall roughness effects can be minimized if the vacuum chamber surface is characterized by a large aspect ratio of the surface roughness (characteristic length to the height of the surface bumps). We attempted to explore these effects for realistic surfaces by means of the direct numerical simulations. Several surfaces were measured, including extruded aluminium, for which such roughness aspect ratio is expected to be very large. The measured surface data was then used as an input parameter in electrodynamic code NOVO [4] to simulate the wake field.

Studies were done both for the long bunches (for the eRHIC parameters [2-3]) with the bunch length longer than a typical correlation length of the rough surface and for short bunches with bunch length much smaller than the correlation length of the surface roughness. In this paper, only results for the case of the short bunches are presented, as an illustrative example of our studies.

WALL ROUGHNESS

An effect of the wall roughness was first estimated based on the impedance of small protrusions of different configurations and orientations in Ref. [5]. Such an “inductive” model can lead to a very strict requirement on the surface polishing. The longitudinal wake potential in this model scales as h/b , where h is the height of the protrusion and b is the radius of the beam pipe.

Another model for the wall roughness was introduced in Refs. [6-7]. In this model the presence of roughness is equivalent to a pipe with a thin dielectric layer or periodic corrugation on the smooth wall surface. This model is typically referred to as the “dielectric” or “resonator” model. In the “resonator” model the coupling impedance also has a resistive part. A detailed comparison of the “resonator” and “inductive” models was given in [7]. The “resonator” model becomes invalid when the correlation length (or period of corrugation) is significantly larger than the height of the protrusion. This happens to be the case for realistic wall surfaces [8] and especially for the surfaces produced with extrusions.

The length of the protrusions along the surface (referred to as the “correlation length” l_c) was taken into account in the model developed in Refs. [8-9], which reduced the coupling impedance significantly for typical surfaces with the large correlation length, resulting in the scaling of the wake potential as $h \cdot h / (b \cdot l_c)$. A comparison of such model with the “inductive” model was given in Ref. [10].

In the eRHIC design, we relied on a significant reduction of the wall roughness effects due to the large aspect ratio of the wall roughness by choosing extruded aluminium vacuum chamber. Measurements of several surfaces were performed to allow systematic study of wake field dependences on the height and length of the roughness. In addition, rather than using measured surface data in approximate models for the estimates, we attempted to study wake fields directly, using numerical simulations with the code NOVO [4].

MEASURED SURFACES

In this paper, we limit our discussion to three measured surfaces: 1) “surface-1”: sample of an extruded aluminium surface from the NSLS-II vacuum chamber; 2) “surface-2”: rough aluminium surface without extrusions; 3) “surface-3”: extruded aluminium surface from the superconducting undulator provided by ANL [11].

*Work supported by the US Department of Energy under contract No. DE-AC02-98CH10886 and DE-AC02-76SF00515.
#fedotov@bnl.gov

NUMERICAL SIMULATIONS

Numerical calculation of wake fields due to real surface roughness is extremely demanding task. For this purpose, we used computer code NOVO which was specifically developed to handle calculation of wakes for very short bunches in very long accelerator structures. For solving Maxwell's equations in time domain, the NOVO code uses finite-difference method with improved characteristic of the dispersion curve in the region of minimum critical wavelength [4]. This code was used before to study effects of wall roughness for artificially created surfaces [6-7]. Here we performed simulations of wake fields with real measured surface data.

Although measured surface maps are three dimensional, the NOVO code is a 2-D code. For each numeric simulation, we took a single 1-D slice from the measured surface. Based on such a slice, the code generates azimuthally symmetric protrusions. The net effect of such 2-D simulation is that magnitude of the wake is somewhat over estimated compared to the real structure in 3-D [12]. Therefore, such 2-D simulations can be used for a conservative estimate.

The primary goal of our studies was to study wakes resulting from real surfaces produced with an extrusion technique, and thus very long correlation length. In addition, we studied dependences on the correlation length and height of the surface bumps; as well as different beam distribution from Gaussian to a more uniform bunch profiles. Due to a limited space in this paper, only few results for the case of bunches with a short edge are presented. Shown results are for the bunches with the flat centre region of 0.3 mm and bunch edges of 0.03 mm rms.

EXAMPLES AND RESULTS

Figure 1 shows 3-D measurement of extruded aluminium “surface-1”.

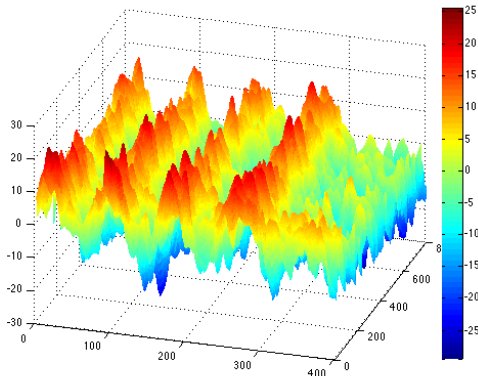


Figure 1: Measurement of “surface-1”. Extrusions are along the mountain ridges (red). Vertical axis in μm ; horizontal axes in pixels.

Due to a very large height of the roughness, resulting wake potential for “surface-1” is also large. Figure 2 shows a 1-D slice from the surface in Fig. 1 used in

simulations. Figure 3 shows the bunch profile, the resulting wake potential and the loss factor.

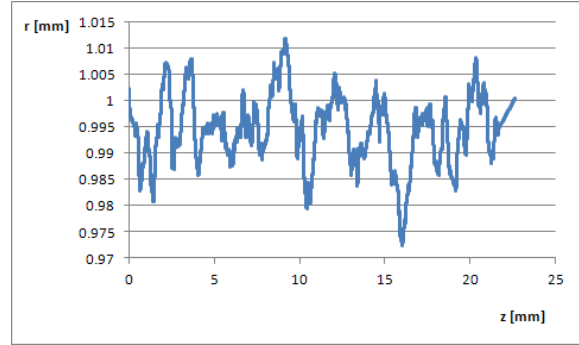


Figure 2: Slice from measured “surface-1” along one of the “mountain ridges” (along extrusion, beam direction z) added to the beam pipe radius of $r=1$ mm.

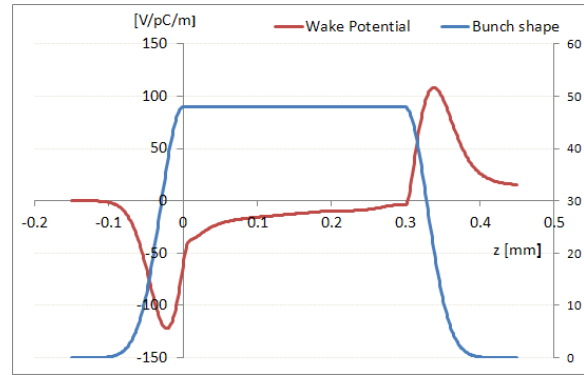


Figure 3: Blue: bunch profile; red: wake potential for “surface-1”, radius $r=1$ mm. Loss factor $k=16$ V/pC/m.

Simulations using “surface-1” data but with the characteristic length l_c artificially scaled by some factor showed that energy spread scales as $1/l_c$, as suggested in [8-9]. However, we did not observe expected h^2 dependence when the height h of the surface was also scaled by a factor. A possible scaling (more studies are needed) could be similar to $h \cdot g/(b \cdot l_c)$, where g is some additional surface parameter, describing the characteristic distance between the protrusions. For comparison, one obtains such $h \cdot g/(b \cdot l_c)$ dependence for a periodic structure with the depth h , gap size g and period l_c .

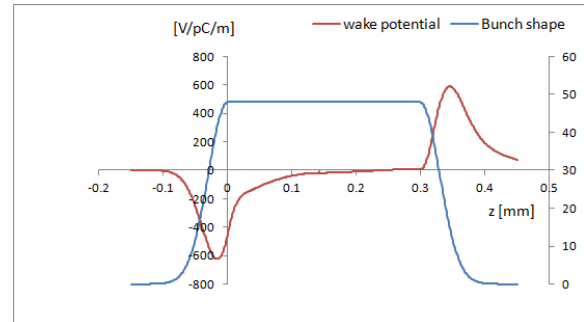


Figure 4: Blue: bunch profile; red: wake potential for “surface-1” with the correlation length 4 times smaller than in Figs. 2-3, $r=1$ mm. Loss factor $k=64$ V/pC/m.

As an example, Figure 4 shows resulting wake potential for the “surface-1” with the longitudinal structure of the surface in Fig. 1 compressed by a factor of four.

In further studies, a small-gap extruded aluminium vacuum chamber with a very smooth surface (Fig. 5), without applying possible polishing techniques, was provided by ANL [11]. The calculated wake potential and loss factor for such surface are shown in Fig. 6.

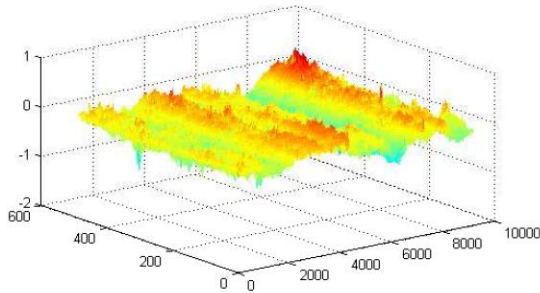


Figure 5: Measured surface for extruded aluminium “surface-3” provided by ANL. Vertical axis in μm ; horizontal axes in pixels.

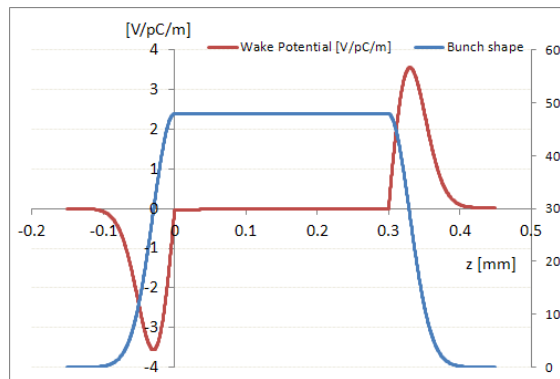


Figure 6: Blue: bunch profile; red: wake potential for “surface-3”, $r=1\text{mm}$. Loss factor $k=0.05\text{ V/pC/m}$.

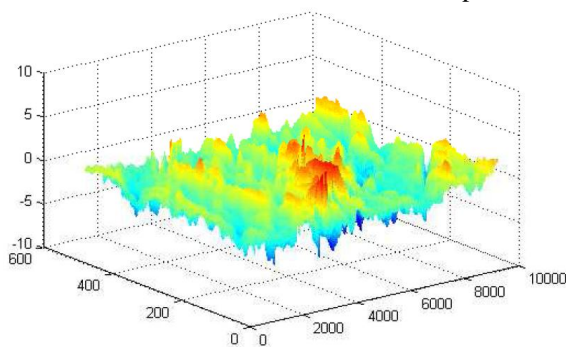


Figure 7: Measurement for aluminium surface without extrusions (“surface-2”). Vertical scale in μm .

We also studied wake potential for several aluminium surfaces without extrusions. Although these surfaces did not have large correlations lengths the height of the roughness bumps was not as large as for “surface-1”. As a result, computed wake potential was of the same order as for “surface-1” with the extrusions, as shown in Figs. 7-8.

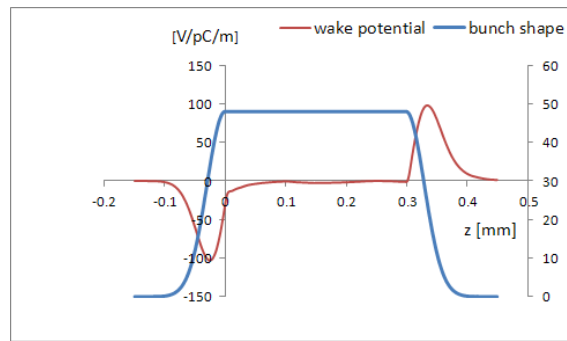


Figure 8: Blue: bunch profile; red: wake potential for “surface-2”, $r=1\text{mm}$. Loss factor $k=4\text{ V/pC/m}$.

SUMMARY

In these studies we simulated wake potentials due to a wall roughness using real measured surface data. Some dependences on the correlation length and height of the surface bumps were examined. Several examples from our studies are reported in this paper.

Our simulations confirmed that the effect of the wall roughness can be strongly suppressed with the smooth extruded surfaces like the “surface-3”. Simulation of wakes for the eRHIC parameters (not presented in this paper) showed that such a surface would be satisfactory for the eRHIC design.

ACKNOWLEDGMENT

We are indebted to Peter Takacs from the Instrumentation Division of BNL for surface measurements used in these studies. We would also like to thank I. Ben-Zvi, V. Litvinenko, E. Trakhtenberg and V. Yakimenko for help and useful discussions.

REFERENCES

- [1] V. Ptitsyn et al., Proc. of IPAC’11 (San Sebastian, Spain, 2011), p. 3726, THPZ019.
- [2] A. Fedotov and D. Kayran, Proc. of ERL2011 (Tsukuba, Japan, 2011), WG2014, p.64.
- [3] A. Fedotov et al., Proc. of IPAC’12 (New Orleans, USA, 2012), WEPPR017, p. 2976.
- [4] A. Novokhatski, "The computer code NOVO for the calculation of wake potentials of the very short ultra-relativistic bunches", SLAC-PUB-11556 (2005).
- [5] K. Bane et al., Proc. of PAC97, p. 1738 (1997).
- [6] A. Novokhatski and A. Mosnier, Proc. of PAC97, p. 1661; A. Novokhatski, M. Timm, T. Weiland, Proc. of ICAP’98, DESY Report TESLA 99-17.
- [7] K. Bane and A. Novokhatski, SLAC-AP-117 (1999).
- [8] G. Stupakov, Phys. Rev. ST AB 2, 060701 (1999).
- [9] G. Stupakov, Phys. Rev. ST AB 1, 064401 (1998).
- [10] K. Bane and G. Stupakov, SLAC-PUB 8023 (1998).
- [11] Sample of extruded aluminium “surface-3” was provided by Emil Trakhtenberg from ANL.
- [12] A. Novokhatski, M. Timm, T. Weiland, Proc. of PAC’99 (New York, NY, 1999), p. 2879.