

EXPERIMENTAL PLANS TO EXPLORE DIELECTRIC WAKEFIELD ACCELERATION IN THE THZ REGIME*

F. Lemery¹, C. Behrens³, E. Elsen³, K. Flöttmann³, C. Gerth³, G. Kube³, D. Mihalcea¹,
J. Osterhoff^{3,4}, P. Piot^{1,2}, B. Schmidt³, P. Stoltz⁵

¹ Department of Physics and Northern Illinois Center for Accelerator & Detector Development(NICADD), Northern Illinois University DeKalb, IL 60115, USA

² Accelerator Physics Center, Fermi National Accelerator Laboratory, Batavia, IL 60510, USA

³ Deutsches Elektronen-Synchrotron DESY, Notkestraße 85 D-22607 Hamburg, Germany

⁴ Universität Hamburg, Luruper Chaussee 149, 22761 Hamburg, Germany

⁵ Tech-X Corporation, Boulder, CO 80303, USA

Abstract

Dielectric wakefield accelerators have shown great promise toward high-gradient acceleration. We investigate the performances of a possible experiment under consideration at the FLASH facility in DESY to explore wakefield acceleration with an enhanced transformer ratio. The experiment capitalizes on a unique pulse shaping capability recently demonstrated at this facility. In addition, the facility incorporates a superconducting linear accelerator that could generate bunch trains with closely spaced bunches thereby opening the exploration of potential dynamical effects in dielectric wakefield accelerators.

INTRODUCTION

The rapidly developing field of accelerator physics is showing great promise for applications to many other technologies and sciences such as high energy physics, medicine, imaging, material sciences, energy production and propulsion. Today's conventional accelerators use radiofrequency (rf) cavities which have maximum acceleration gradients of ~ 100 MV/m [1]. The emergence of high-gradient accelerating structures such as plasma or dielectric wakefield accelerators [2, 3] opens the door towards more compact and cost effective accelerators.

This paper concentrates on beam-driven wakefield accelerators that employ dielectric-loaded waveguides (DLW). In such a scheme, a high-charge drive bunch excites electromagnetic wakes in the DLW allowing a properly delayed witness bunch to experience a strong accelerating field. Collinear beam-driven acceleration techniques have demonstrated accelerating fields in excess of 1 GV/m [2, 4]. The fundamental wakefield theorem [5] limits the transformer ratio ($\mathcal{R} \equiv E_+/E_-$) – where E_+ is the maximum accelerating field in the wake, and E_- is the maximum decelerating field experienced by the driving bunch – to 2 for bunches with symmetric current profiles. Tailored bunches with asymmetric (e.g. a linearly-ramped) current profiles can lead to a transformer ratio > 2 [6].

* This work was sponsored by the DTRA award HDTRA1-10-1-0051 to Northern Illinois University, the German's Bundesministerium für Bildung und Forschung and by the DOE contract DE-AC02-07CH11359 to the Fermi research alliance LLC.

In the following, we consider two types of dielectric structures shown in Fig. 1. The structures consist of a cylinder (resp. slab) with aperture radius (resp. half gap) a and dielectric layer thickness $\delta = b - a$. The dielectric layer has a relative electric permittivity ϵ . In this paper, we explore the performances of these two types of structures in the (a, b, ϵ) parameter space using experimentally generated bunches with ramped current profiles [7].

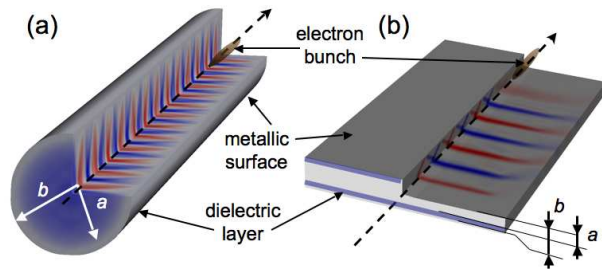


Figure 1: Geometries of interest: (a) An electron bunch passes through a cylinder with inner radius a , and outer radius b . (b) Similarly an electron bunch passes through a slab-symmetric geometry of inner length a , and outer length b . In both instances, the dielectric material is located in the region $\delta = b - a$, the geometries are surrounded by a conducting sheet, and the region $< a$ is vacuum.

SIMULATIONS AND RESULTS

We have developed several numerical models capable of simulating wakefields generated as a bunch of electrons passes through a cylindrical or slab structure. Our model is based on a semi-analytical approach developed in Ref. [8] for the cylindrical DLWs and on an extension of the work reported in Ref. [9] for the slab DLWs [10]. The developed models were benchmarked against the three-dimensional electromagnetic particle-in-cell program VORPAL [11]. VORPAL uses the finite difference-time domain (FDTD) method to solve Maxwell's equations and includes an advanced technique known as cut-cell boundaries to allow accurate representation of curved geometries within a rectangular grid.

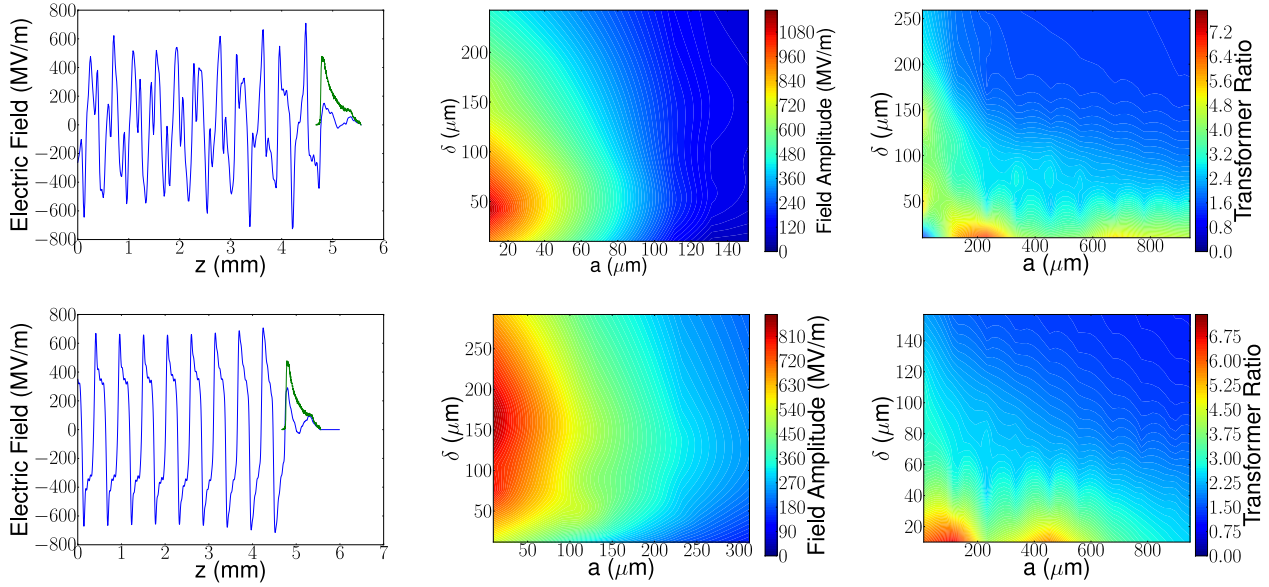


Figure 2: Wakefields (blue trace) produced by a 500-pC bunch with ramped current distribution (green trace) [left column], scan of the peak accelerating field (E_+) [middle column], and scan of the transformer ratio (\mathcal{R}) [right column], in the (a, δ) parameter spaces. The top and bottom rows respectively correspond to cylindrical and slab DLWs. The wakefields plotted in the left column correspond to $(a, \delta) = (20, 60) \mu\text{m}$.

The $(a, \delta \equiv b - a)$ parameter space was scanned and the values \mathcal{R} and E_+ were recorded. The dielectric layer material was chosen to be made of diamond ($\epsilon = 5.7$) due to its exceptional heat coefficient [$> 2000 \text{ W/(mK)}$].

We present simulation results pertaining to one of the ramped current profiles measured during a current shaping experiment conducted at the Free-electron LASer in Hamburg (FLASH) facility [12]; see details in [7]. The resulting performances in the (a, δ) parameter space are gathered in Fig. 2 for both a cylindrically-symmetric and slab-symmetric structures. As expected from its shape, the current profile yields a \mathcal{R} in excess of ~ 6 , with peak currents on the order of $\sim 1 \text{ GV/m}$. For both types of structures the \mathcal{R} evolution in the (a, δ) parameter space displays similar features and especially several maxima. Some of these maxima correspond to high electric-field amplitudes (for small values of a), while others are attained for more conservative values of $a \sim 200 - 300 \mu\text{m}$ with significantly weaker (but still attractive) field amplitudes $|E_+| \sim 100 \text{ MV/m}$.

We also considered the wakefield properties resulting from bunches obtained using the typical nonlinear bunch compression settings at FLASH. These bunches can generate electric fields in excess of 2 GV/m (at the expense of poor \mathcal{R} values); see an example of produced wakefield in Fig. 3.

Finally, in an effort to understand the more-intricate dependence of the wakefield properties on the dielectric constant ϵ , we scanned its value for fixed a, b parameters (see Fig. 4). We found that E_+ and \mathcal{R} were extremely sensitive to changes in ϵ and could potentially achieve values

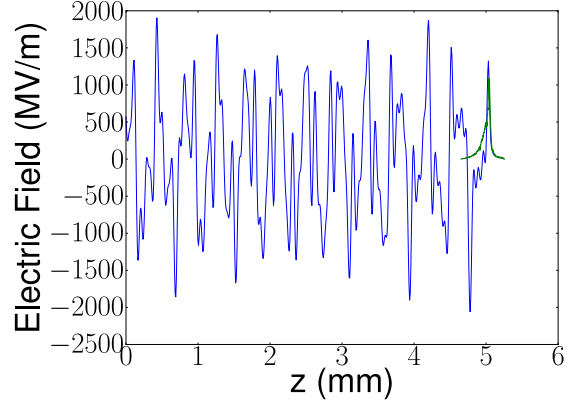


Figure 3: Example of wakefield (blue trace) produced by a 500-pC bunch (green trace) obtained via typical non-linear bunch compression at FLASH. The structure is a cylindrical DLW with $(a, \delta) = (20, 60) \mu\text{m}$

$\mathcal{R} > 10$. These high values of \mathcal{R} are associated to values of ϵ which are not a priori available in conventional materials. Synthesizing materials with the required ϵ while having a low tan-loss factor might be very challenging. It is however worth stressing that the current profile has also a significant impact. In particular, we showed that maxima of the $\mathcal{R}(\epsilon)$ function could be shifted to different ϵ values by altering the current profiles. We plan on investigating such a feature closer with the end goal of establishing a set of possible materials. Such a multivariate optimization in the (a, b, ϵ) parameter space will be performed using a ge-

netic algorithm. The overall optimization goals will be to find compromises between high values of \mathcal{R} and $|E_+|$.

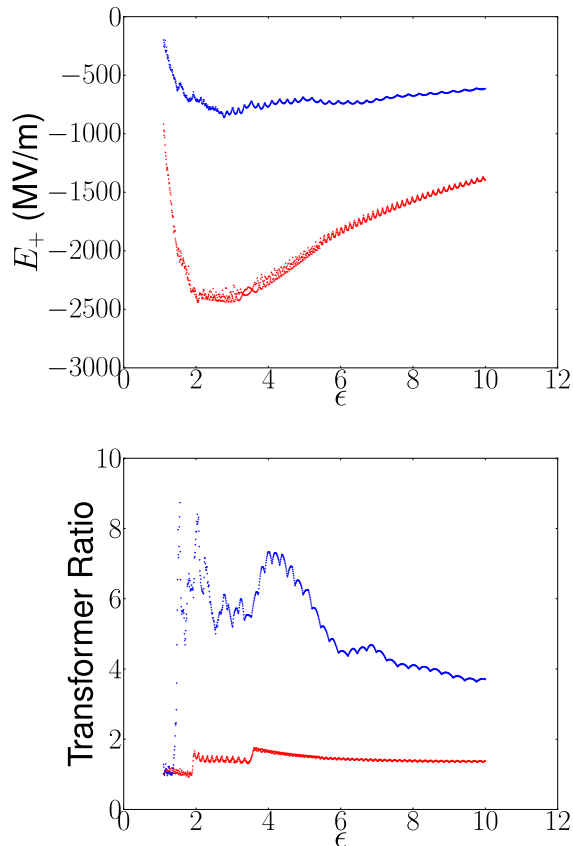


Figure 4: Accelerating field E_+ (top) and transformer ratio \mathcal{R} (bottom) as a function of ϵ . The blue and red traces respectively correspond to the current profiles shown in Fig. 2 and 3. For these calculations, $(a, \delta) = (20, 60) \mu\text{m}$.

POSSIBLE EXPERIMENT AT FLASH

Based on the simulation results presented in the previous sections we are planning an experiment aimed at measuring an enhanced transformer ratio using the ramped bunches produced at the FLASH facility. In such an experiment, the dielectric structure would be located downstream of the last accelerating stage once the beam has been accelerated to ~ 700 MeV. After the beam passes through a remotely insertable DLW structure it will be vertically sheared by a transverse deflecting structure (TDS) and then horizontally bent with a dipole magnet (spectrometer); see Fig. 5. A Cerium-doped Yttrium Aluminium Garnet screen (Ce:YAG) located downstream of the dipole magnet will provide a single-shot measurement of the longitudinal phase space distribution thereby allowing for a time-resolved measurement of the drive bunch’s energy loss. Given the typical rms fractional momentum spread measured during the ramped bunch experiment reported in Ref. [7], we expect that a DLW structure with a conser-

vative 2-cm length and its geometric parameter chosen to provide a conservatively-low peak field of $E \simeq 200$ MV/m. This would result in, at least, a 2-fold increase in fractional momentum spread to $\sim 200 \times 0.02/700 \simeq 0.6 \times 10^{-3}$. Such an increase is well within the resolution of the spectrometer. In addition, the time-resolved nature of our measurement should allow for a sensitivity to even smaller increase as details of the correlated energy developing due to the wakefield will be observable.

Finally, the availability of an 800- μm macropulse comprising of 2400 electron bunches could also enable the investigation of dynamical effects in the DLW. Such a capability is unique to a super-conducting linac.

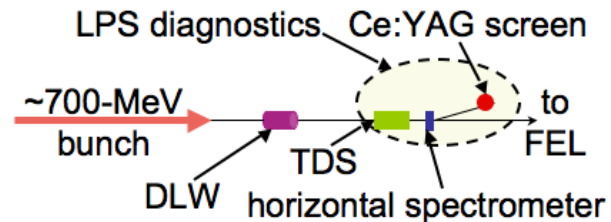


Figure 5: Possible DLW test experimental configuration at the FLASH facility. The drive and witness bunches longitudinal phase space (LPS) is directly measured at the Ce:YAG screen after the beam has been vertically sheared in a transverse deflecting structure (TDS) and horizontally bent in a spectrometer.

REFERENCES

- [1] W. Wuensch, et al., Proceedings of the 2003 Particle Accelerator Conference (PAC03), Portland, OR, USA, 495 (2003).
- [2] I. Blumenfeld et al., *Nature* **445**, 741 (2007).
- [3] G. A. Voss and T. Weiland, “Particle Acceleration by Wake Field”, DESY report M-82-10, April 1982; W. Bialowons et al., “Computer Simulations of the wakefield transformer experiment at DESY”, Proceedings of the 1988 European Particle Accelerator Conference (EPAC 1988), Rome, Italy, 902 (1988).
- [4] M.C. Thompson, *et al.*, *Phys. Rev. Lett.*, **100**, 21 (2008).
- [5] R. D. Ruth, A. Chao, P. L. Morton, P. B. Wilson, *Part. Accel.* **17**, 171 (1985).
- [6] K. L. F. Bane, *et al.*, *IEEE Transactions on Nuclear Science*, **NS-32**, 5 (1985).
- [7] P. Piot, *et al.* “Generation and Characterization of Electron Bunches with Ramped Current Profiles in a Dual Frequency Superconducting Linear Accelerator”, preprint DESY FLASH-11-002 and Fermilab PUB-2011-366-APC (2011); see also paper WEPZ016, these Proceedings.
- [8] M. Rosing and W. Gai, *Phys. Rev. D.* **42**, 5 (1990).
- [9] A. Tremaine and J. Rosenzweig, *Phys. Rev. E.* **56**, 6 (1997).
- [10] D. Mihalcea, P. Piot, and P. Stoltz, to be published (2011).
- [11] C. Nieter, J. R. Cary, *J. Comp. Phys.* **169**, 448 (2008).
- [12] W. Ackermann, *et al.*, *Nature Photonics* **1**, 336 (2007).