

BEHAVIOR OF W AND WSi<sub>x</sub> CONTACT METALLIZATION ON n- AND p- TYPE GaN

X. A. Cao,\* F. Ren,\*\* J. R. Lothian, \*\*\* S. J. Pearton,\* C. R. Abernathy,\* J. C. Zolper,\*\*\*\* M. W. Cole,\*\*\*\*\* A. Zeitouny,\*\*\*\*\* M. Eizenberg\*\*\*\*\* and R. J. Shul\*\*\*\*\*

\*Department of Materials Science and Engineering, University of Florida, Gainesville, FL 32611, USA

\*\*Department of Chemical Engineering, University of Florida, Gainesville, FL 32611, USA

\*\*\*Multiplex Inc., South Plainfield, NJ 07080, USA

\*\*\*\*Office of Naval Research, Arlington, VA 22217, USA

\*\*\*\*\*US Army Research Laboratory, WMRD, Aberdeen Proving Ground, MD 21105, USA

\*\*\*\*\*Department of Materials Engineering, Technion - Israel Institute of Technology, Haifa 32000, Israel

\*\*\*\*\*Sandia National Laboratories, Albuquerque, NM 87185, USA

Cite this article as: MRS Internet J. Nitride Semicond. Res. 4S1, G6.39(1999)

## ABSTRACT

Sputter-deposited W-based contacts on p-GaN ( $N_A \sim 10^{18} \text{ cm}^{-3}$ ) display non-ohmic behavior independent of annealing temperature when measured at 25 °C. The transition to ohmic behavior occurs above ~250 °C as more of the acceptors become ionized. The optimum annealing temperature is ~700 °C under these conditions. These contacts are much more thermally stable than the conventional Ni/Au metallization, which shows a severely degraded morphology even at 700 °C. W-based contacts may be ohmic as-deposited on very heavily doped n-GaN, and the specific contact resistance improves with annealing up to ~900 °C.

## INTRODUCTION

One of the limiting factors in GaN device technology are the relatively high ohmic contact resistances. In the search for improved contact characteristics, a wide variety of metallizations have been investigated on p-GaN besides the standard Ni/Au[1-7], including Ni[4,5,8], Au[4,7,9,10], Pd[4], Pd/Au[11,12], Pt/Au[6], Au/Mg/Au[9,13], Au/C/Ni[14], Ni/Cr/Au[12,15] and Pd/Pt/Au[6]. This area has been reviewed recently by Mohny and Lau[16], and by Liu and Lau[17]. Typically Ni, Pd or Pt is the metal in direct contact with the GaN, and the structure is annealed at 400 - 750 °C. This produces contact resistances in the  $10^{-1} - 10^{-3} \Omega \cdot \text{cm}^2$  range. For higher temperatures severe degradation in contact morphology is observed, usually resulting from the formation of the metal gallides[16].

For n-type ohmic contacts, the most popular metallization schemes have been those based on Al/Ti/n-GaN, often with overlayers of Au/Ni[16,17]. It is believed that diffusion of Al to the metal/GaN interface is a critical step in forming the lowest specific contact resistance, and that TiN formation produces a high concentration of nitrogen vacancies that lead to  $n^+$  doping level and lower  $R_c$  values[17]. We have previously reported that both W and WSi<sub>x</sub> on  $n^+$  epi GaN layers ( $n \sim 10^{19} \text{ cm}^{-3}$ ) produce reasonable contacts ( $R_c \sim 8 \times 10^{-5} \Omega \cdot \text{cm}^2$ ), but extremely stable behavior[18,19] - annealing at 1000 °C led to a shallow reacted region of  $\leq 100 \text{ \AA}$ , and in junction field-effect transistor structures these contacts can withstand implant activation anneals at 1100 °C[20].

In this paper we report on use of ion implantation to increase the doping level in GaN, which would be of particular interest for creating  $n^+$  or  $p^+$  regions in device structures, and also

on the characteristics of W and WSi<sub>x</sub> metal contacts on both n- and p-type GaN. The thermal stability of the refractory metal contacts is superior to that of the conventional Ni/Au scheme employed for p-GaN.

## EXPERIMENTAL

P-type ( $N_A = 10^{18} \text{ cm}^{-3}$ ), Mg-doped GaN layers 1  $\mu\text{m}$  thick were grown on Al<sub>2</sub>O<sub>3</sub> substrates by Molecular Beam Epitaxy using solid Ga and rf plasma-activated N<sub>2</sub>[21]. Strong cathodoluminescence was observed at  $\sim 385 \text{ nm}$ , with very little deep level emission. Undoped GaN layers  $\sim 3 \mu\text{m}$  thick were grown on Al<sub>2</sub>O<sub>3</sub> by Metal Organic Chemical Vapor Deposition. These samples were implanted with 100 keV Si<sup>+</sup> ions at a dose of  $5 \times 10^{15} \text{ cm}^{-2}$ , and annealed with AlN caps in place to 1400 °C for 10 secs[22]. This produced a peak n-type doping concentration of  $\sim 5 \times 10^{20} \text{ cm}^{-3}$ . W or WSi<sub>0.45</sub> layers  $\sim 1000 \text{ \AA}$  thick were deposited using an MRC501 sputtering system. The sample position was biased at 90 V with respect to the Ar discharge. Prior to sputtering, the native oxide was removed in a 20:1 H<sub>2</sub>O:NH<sub>4</sub>OH solution. Transmission line patterns were defined by dry etching the exposed metal with SF<sub>6</sub>/Ar, and forming mesas around the contact pads using BCl<sub>3</sub>/N<sub>2</sub> dry etching to confine the current flow. For comparison, on the p-GaN, Au(1000 Å)/Ni(500 Å) was deposited by e-beam evaporation, defined by lift-off and mesas formed by dry etching. Both n- and p-type samples were annealed for 60 secs (in some experiments this was varied from 30 - 300 secs) at 300 - 1000 °C under flowing N<sub>2</sub>.

In addition, implantation of S, Se and Te for creation of n-type doping and of Mg, Be and C for p-type doping was examined in undoped MOCVD-grown GaN. Annealing was performed up to 1500 °C, using AlN cap layers for surface protection.

## RESULTS AND DISCUSSION

### (a) Implantation

Secondary Ion Mass Spectrometry(SIMS) did not detect any measurable redistribution for S, Se, Te, Mg or C at 1450 °C, implying effective diffusivities of  $\leq 2 \times 10^{-13} \text{ cm}^2 \cdot \text{sec}^{-1}$  for each of these dopants at this temperature. The exception was Be, which displayed an apparent damage-assisted diffusion at 900 °C, but did not move at higher annealing temperatures. It appears that in GaN, the interstitial as-implanted Be undergoes a type of transient enhanced diffusion until excess point defects created by the nuclear stopping process of the implanted ions are removed by annealing, at which stage the Be is basically immobile.

While Si<sup>+</sup> implantation produced n-type doping levels up to  $5 \times 10^{20} \text{ cm}^{-3}$ , the other donors were less effective. The maximum doping achieved with S<sup>+</sup> implantation was  $\sim 5 \times 10^{18} \text{ cm}^{-3}$ , while with Te<sup>+</sup> it was  $\sim 1.6 \times 10^{18} \text{ cm}^{-3}$ .

It is difficult to create p-type doping by implantation in GaN because of the large ionization levels of acceptor species and n-type character of residual lattice damage. We did not achieve p-type conductivity by implanting C<sup>+</sup>, while a maximum doping level of  $10^{17} \text{ cm}^{-3}$  was obtained with Mg<sup>+</sup> under the same conditions.

### (b) Contact Properties

#### (i) p-GaN

## **DISCLAIMER**

**This report was prepared as an account of work sponsored by an agency of the United States Government. Neither the United States Government nor any agency thereof, nor any of their employees, make any warranty, express or implied, or assumes any legal liability or responsibility for the accuracy, completeness, or usefulness of any information, apparatus, product, or process disclosed, or represents that its use would not infringe privately owned rights. Reference herein to any specific commercial product, process, or service by trade name, trademark, manufacturer, or otherwise does not necessarily constitute or imply its endorsement, recommendation, or favoring by the United States Government or any agency thereof. The views and opinions of authors expressed herein do not necessarily state or reflect those of the United States Government or any agency thereof.**

## **DISCLAIMER**

**Portions of this document may be illegible in electronic image products. Images are produced from the best available original document.**

Figure 1 shows annealing temperature dependence of the I-V characteristics of the Ni/Au, W and WSi on p-GaN, with the measurements made at 25 °C in all cases. Note that for the optimum anneal temperatures (700 °C for Ni/Au and W, and 800 °C for WSi<sub>x</sub>), the contacts are not ohmic, but are more accurately described as leaky Schottky diodes. In the case of W and WSi, we assume that annealing above the optimum temperature produces loss of N<sub>2</sub> and poorer contact properties.

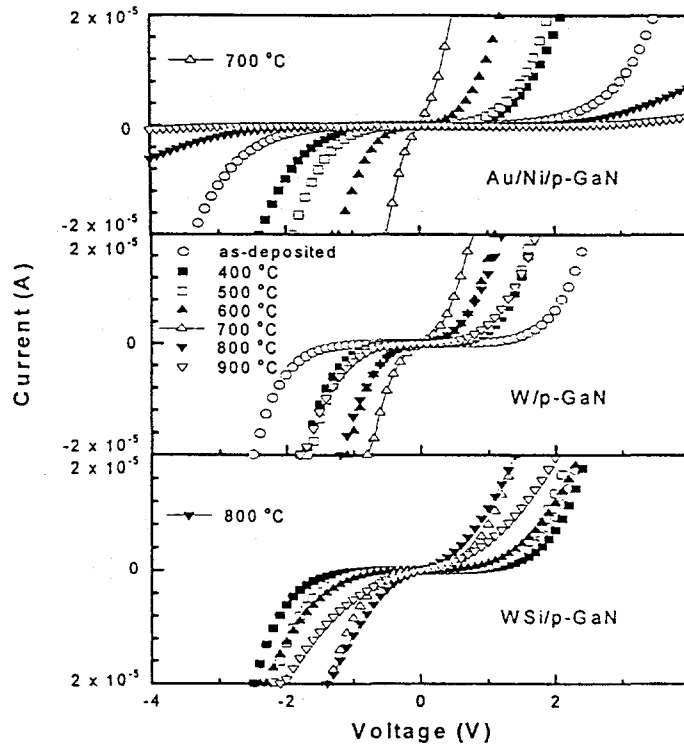


Fig. 1. Annealing temperature dependence of I-V characteristics of WSi, W and Ni/Au contacts on p-GaN(60 sec anneal times).

The contact morphology on the W and WSi metallization remained featureless to the highest temperature we investigated. This is in sharp contrast to the case of Ni/Au, as shown in Figure 2. For the latter metallization, islanding is quite severe after 700 °C annealing due to reaction of the Ni with the GaN[21-23].

Since the hole concentration in p-GaN will increase rapidly with temperature due to the higher ionization efficiency for the Mg acceptors, we would expect an improvement in contact properties at elevated temperatures. For example, from calculating the Fermi level position as a function of temperature, we find the ionization efficiency improves from ~10% at 25 °C to ~56% at 300 °C. Figure 3 shows the I-V characteristics for the 700 °C (Ni/Au and W) or 800 °C (WSi) annealed samples, as a function of the measurement temperature (25 - 300 °C). For the Ni/Au, the contacts become ohmic at  $\geq 200$  °C, while for W and WSi<sub>x</sub> this occurs at 300 °C. The  $R_c$  values at 300 °C are  $9.2 \times 10^{-2} \Omega \cdot \text{cm}^2$  (Ni/Au),  $6.8 \times 10^{-1} \Omega \cdot \text{cm}^2$  (W) and  $2.6 \times 10^{-2} \Omega \cdot \text{cm}^2$  (WSi). The TLM measurements showed that the substrate sheet resistance is reduced from  $1.39 \times 10^4 \Omega/\square$  at 200 °C, to  $8470 \Omega/\square$  at 250 °C and  $4600 \Omega/\square$  at 300 °C, indicating that the increased hole concentration plays a major role in decreasing  $R_c$ .

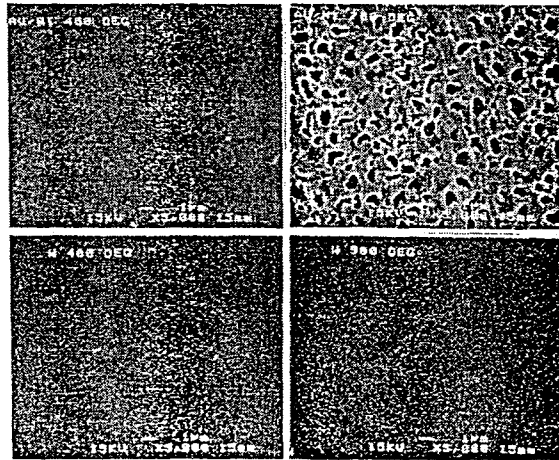


Fig. 2. SEM micrographs of Ni/Au contacts on p-GaN after 60 secs anneals at either 400 °C (top left) or 700 °C (top right), or W contacts after similar annealing at 400 °C (bottom left) or 900 °C (bottom right).

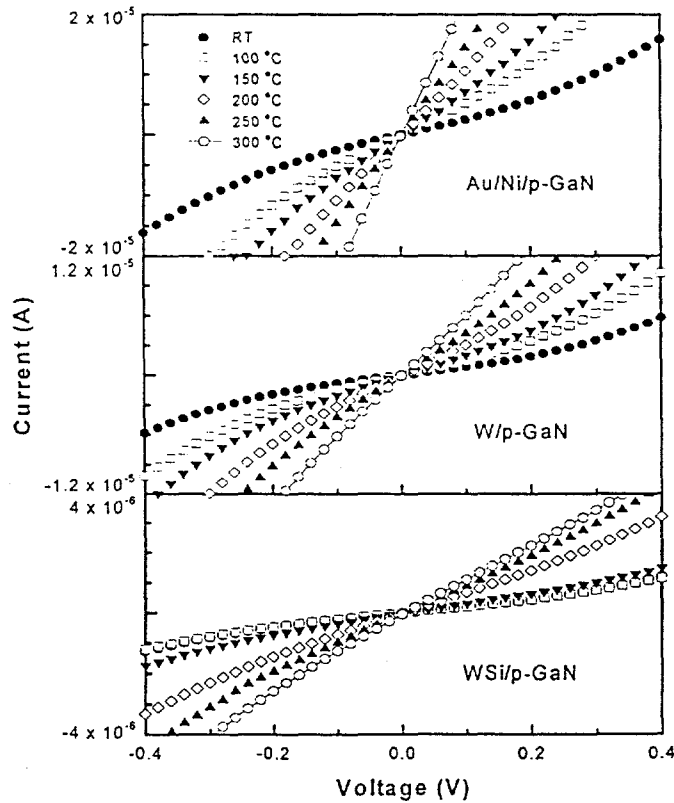


Fig. 3. Measurement temperature dependence of I-V characteristics of Ni/Au, W or  $WSi_x$  contacts on p-GaN.

(ii) n-GaN

Figure 4 shows the annealing temperature dependence of  $R_c$  for W contacts on Si-implanted GaN. The specific contact resistance improves with annealing up to  $\sim 950$  °C, which appears to correspond to the region where the  $\beta$ - $W_2N$  interfacial phase is formed. Cole et al[19]. reported that W and WSi contacts on GaN annealed in the range 750-850 °C showed the minimum degree of metal protrusion in the interfacial regions devoid of the  $\beta$ - $W_2N$  phase, whereas at lower annealing temperatures the horizontal spatial extent of this phase was smaller and allowed more protrusions to develop. The excellent structural stability of the W on GaN was clear from both AES and SEM data on annealed samples.

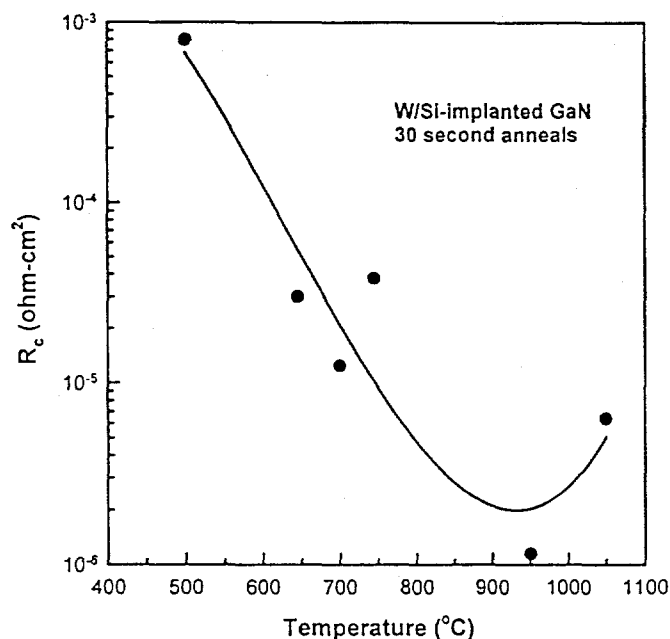


Fig. 4. Annealing temperature dependence of  $R_c$  for W contacts on Si-implanted GaN.

## SUMMARY AND CONCLUSIONS

W and WSi ohmic contacts on both p- and n-type GaN have been annealed at temperatures from 300 - 1000 °C. There is minimal reaction ( $\leq 100$  Å broadening of the metal/GaN interface) even at 1000 °C. Specific contact resistances in the  $10^{-6}$   $\Omega$ -cm<sup>2</sup> range are obtained for W on Si-implanted GaN with a peak doping concentration of  $\sim 5 \times 10^{20}$  cm<sup>-3</sup>, after annealing at 950 °C. On p-GaN, leaky Schottky diode behavior is observed for W, WSi<sub>x</sub> and Ni/Au contacts at room temperature, but true ohmic characteristics are obtained at 250 - 300 °C, where the specific contact resistances are typically in the  $10^{-2}$   $\Omega$ -cm<sup>2</sup> range. The best contacts for W and WSi<sub>x</sub> are obtained after 700 °C annealing for periods of 30 - 120 secs. The formation of  $\beta$ - $W_2N$  interfacial phases appear to be important in determining the contact quality.

## ACKNOWLEDGEMENTS

The work at UF is partially supported by a DARPA/EPRJ grant (D. Radack/J. Melcher) and by an NSF grant (DMR-9732865) monitored by L. D. Hess. Sandia is a multiprogram laboratory

operated by Sandia Corporation, a Lockheed-Martin company, for the US Department of Energy under contract No. DEAC04-94AL85000.

## REFERENCES

1. S. Nakamura, in *GaN and Related Materials II*, ed. S. J. Pearton (Gordon and Breach, NY 1998).
2. S. Nakamura, T. Mukai and M. Senoh, *Appl. Phys. Lett.* **64**, 1687 (1994).
3. M. Schauler, C. Kirchner, M. Mayer, A. Pelzmann, F. Eberhard, M. Kamp, P. Unger and K. J. Ebeling, *MRS Internet J. Nitride Semicond. Res.* **2**, 44 (1997).
4. H. Ishikawa, S. Kobayashi, Y. Koide, S. Yamasaki, S. Nagai, J. Umezaki, M. Koike and M. Murakami, *J. Appl. Phys.* **81**, 1315 (1997).
5. K. V. Vassilevski, M. G. Rastegaeva, A. I. Babanin, I. P. Nikitina and V. A. Dmitriev, *MRS Internet J. Nitride Semicond. Res.* **1**, 38 (1996).
6. D. J. King, L. Zhang, J. C. Ramer, S. D. Hersee and L. F. Lester, *Mat. Res. Soc. Symp. Proc.* **468**, 421 (1997).
7. L. F. Lester, D. J. King, L. Zhang, J. C. Ramer, S. D. Hersee and J. C. Zolper, *Mat. Res. Soc. Symp. Proc.* **97-1**, 171 (1997).
8. I. Akasaki, H. Amano, S. Sota, H. Sakai, T. Tanaka and M. Koike, *Jap. J. Appl. Phys.* **34**, L1517 (1995).
9. L. L. Smith, R. F. Davis, M. J. Kim, R. W. Carpenter and Y. Huang, *J. Mater. Res.* **12**, 2249 (1997).
10. T. Mori, T. Kozawa, T. Ohwaki, Y. Taga, S. Nagai, S. Yamasaki, S. Asami, N. Shibata and M. Koike, *Appl. Phys. Lett.* **69**, 3537 (1996).
11. T. Kim, J. Khim, S. Chae and T. Kim, *Mat. Res. Soc. Symp. Proc.* **468**, 427 (1997).
12. J. T. Trexler, S. J. Pearton, P. H. Holloway, H. G. Mier, K. R. Evans and R. F. Karlicek, *Mat. Res. Soc. Symp. Proc.* **449**, 1091 (1997).
13. L. L. Smith, M. D. Bremser, E. P. Carlson, T. W. Weeks, Jr., Y. Huang, M. J. Kim, R. W. Carpenter and R. F. Davis, *Mat. Res. Soc. Symp. Proc.* **395**, 861 (1996).
14. J. T. Trexler, S. J. Miller, P. H. Holloway and M. A. Khan, *Mat. Res. Soc. Symp. Proc.* **395**, 819 (1996).
15. T. Kim, M. C. Yoo and T. Kim, *Mat. Res. Soc. Symp. Proc.* **449**, 1061 (1997).
16. S. E. Mohny and S. S. Lau, in *GaN and Related Materials II*, ed. S. J. Pearton (Gordon and Breach, NY 1998).
17. Q. Z. Liu and S. S. Lau, *Solid -State Electron.* **42**, 667 (1998).
18. M. W. Cole, F. Ren and S. J. Pearton, *J. Electron. Soc.* **144**, L275 (1997); *Appl. Phys. Lett.* **71**, 3004 (1997).
19. M. W. Cole, D. W. Eckart, W. Y. Han, R. L. Pfeffer, and T. Monahan, F. Ren, C. Yuan and R. A. Stall, S. J. Pearton, Y. Li and Y. Lu, *J. App. Phys.* **80**, 278 (1996).
20. J. C. Zolper and R. J. Shul, *MRS Bulletin* **22**, 36 (1997).
21. H. S. Venugopalan, S. E. Mohny, B. P. Luther, J. M. DeLucca, S. D. Wolter, J. M. Redwing and G. E. Bulman, *Mat. Res. Soc. Symp. Proc.* **468**, 431 (1997).
22. V. M. Bermudez, R. Kaplan, M. A. Khan and J. N. Kuznia, *Phys. Rev. B* **48**, 2436 (1993).
23. S. E. Mohny, B. P. Luther and T. N. Jackson, *Mat. Res. Soc. Symp. Proc.* **395**, 843 (1996).