

SAN099-0375J

**CALORIMETRIC STUDIES OF THE ENERGETICS OF ORDER-  
DISORDER IN THE SYSTEM  $Mg_{1-x}Fe_xCa(CO_3)_2$**

**Alexandra Navrotsky**

*Thermochemistry Facility, Department of Chemical Engineering and Materials Science,*

*University of California at Davis, Davis, California 95616, U.S.A.*

**RECEIVED**

**FEB 18 1999**

**OSTI**

**Debra Dooley**

*Department of Earth, Space, and Environmental Sciences, Piedmont College, Demorest,*

*Georgia 30535, U.S.A.*

**Richard Reeder**

*Department of Geosciences, State University of New York*

*at Stony Brook, Stony Brook, New York 11794, U.S.A.*

**Patrick Brady**

*Sandia National Laboratories*

*Albuquerque, New Mexico 87131, U.S.A.*

Submitted: American Mineralogist

October 1998

## ABSTRACT

Calorimetric studies by Chai and Navrotsky (1996) on dolomite-ankerite energetics have been extended by including two additional types of samples: a very disordered stoichiometric  $\text{MgCa}(\text{CO}_3)_2$  prepared from low temperature aqueous solution and three largely ordered natural samples of intermediate iron content.

Combining these data with previous work, three distinct trends of energetics can be seen: those for samples with nearly complete order, nearly complete disorder, and intermediate order. From these trends, the enthalpy of complete disordering is estimated to be  $33 \pm 6$  kJ/mol for  $\text{MgCa}(\text{CO}_3)_2$  and  $18 \pm 5$  kJ/mol for  $\text{FeCa}(\text{CO}_3)_2$ .

## **DISCLAIMER**

This report was prepared as an account of work sponsored by an agency of the United States Government. Neither the United States Government nor any agency thereof, nor any of their employees, make any warranty, express or implied, or assumes any legal liability or responsibility for the accuracy, completeness, or usefulness of any information, apparatus, product, or process disclosed, or represents that its use would not infringe privately owned rights. Reference herein to any specific commercial product, process, or service by trade name, trademark, manufacturer, or otherwise does not necessarily constitute or imply its endorsement, recommendation, or favoring by the United States Government or any agency thereof. The views and opinions of authors expressed herein do not necessarily state or reflect those of the United States Government or any agency thereof.

## **DISCLAIMER**

**Portions of this document may be illegible in electronic image products. Images are produced from the best available original document.**

## INTRODUCTION

Substitution of Fe for Mg in dolomite, ordered  $\text{CaMg}(\text{CO}_3)_2$ , results in a solid solution, the more iron-rich part of which is referred to as ankerite. However, the solid solution is incomplete (Goldsmith et al. 1962; Reeder and Dollase 1989; Davidson et al. 1993), and the ordered phase  $\text{FeCa}(\text{CO}_3)_2$  does not exist, although a disordered calcite-type solid solution of this composition can be made above about 650 °C (Davidson et al. 1993). Goldsmith et al. (1962) examined the dolomite-ankerite system both experimentally and by characterization of natural samples and concluded that ordered compositions extend little more than two-thirds across the join toward  $\text{CaFe}(\text{CO}_3)_2$ , a limit essentially confirmed by Rosenberg (1967). Reeder and Dollase (1989) used single-crystal X-ray diffraction, Mössbauer spectroscopy, and transmission electron microscopy (TEM) to characterize the structural states of a suite of largely ordered samples over this composition range in an effort to identify a structural cause for the limited Fe-Mg substitution. However, no cause was found.

Chai and Navrotsky (1996) determined the energetics of a series of synthetic, largely disordered, solid solutions along the  $\text{MgCa}(\text{CO}_3)_2$ - $\text{FeCa}(\text{CO}_3)_2$  join and Chai et al. (1995) measured the enthalpies of formation of a set of Ca-rich natural dolomites. Those studies expanded the data base for the  $\text{MgCO}_3$ - $\text{FeCO}_3$ - $\text{CaCO}_3$  systems, whose energetics are dominated by order-disorder reactions, but the work left a number of unanswered questions. In particular, the results suggested that the enthalpy of complete disordering of dolomite was in the 20-30 kJ/mol range, a value much higher than the 12 kJ/mol suggested by Navrotsky and Capobianco (1987) on the basis of a calorimetric study of a dolomite which had been quenched from above its order-disorder transition but which may have undergone significant reordering upon cooling. Furthermore, because

the synthetic  $(\text{Mg,Fe})\text{Ca}(\text{CO}_3)_2$  solid solutions had an increasingly disordered structural state with increasing  $\text{Fe}/(\text{Fe}+\text{Mg})$ , their energetics were difficult to interpret. The purpose of this communication is to report and interpret additional new calorimetric data relevant to the issue of order-disorder along the dolomite-ankerite join. Two types of samples were studied in the present work: natural ankerites which are more strongly ordered than their synthetic counterparts, and a highly disordered synthetic  $\text{MgCa}(\text{CO}_3)_2$  phase produced by precipitation from aqueous solution which appears to approximate a fully disordered dolomite (Siegel 1961; P. Brady pers. comm.). By comparing samples of different structural state at the same composition, the systematics suggested by Chai and Navrotsky (1996) have been confirmed and made more quantitative.

## EXPERIMENTAL METHODS

### Sample preparation and characterization

The natural ankerites were taken from a set of samples studied by X-ray, Mössbauer, and TEM techniques (Reeder and Dollase 1989). They had been analyzed by electron microprobe in the earlier study and two calorimetric samples have been analyzed by microprobe again (see Table 1). Of the many samples studied previously, we chose three that showed strong ordering reflections, nearly stoichiometric calcium content, and compositional homogeneity.

The synthetic disordered  $\text{CaMg}(\text{CO}_3)_2$  sample was grown after the method of Siegel (1961) by combining equal volumes (10 ml) of 1M  $\text{MgSO}_4$  and 1M  $\text{CaCl}_2$  to form a  $\text{CaSO}_4$  gel, followed by addition of 20 ml of 1M  $\text{Na}_2\text{CO}_3$  and stirring at 70 °C. After 20 minutes of reaction, samples were filtered and washed with deionized water. Both X-ray

diffraction and TEM showed no ordering reflections. Chemical analysis by DCP indicated a Ca:Mg ratio of 1:1.

Thermogravimetric studies to observe weight changes corresponding to dehydration (of adsorbed water) and decarbonation in  $\text{MgCa}(\text{CO}_3)_2$  were done using a Netzsch STA 409 thermal analysis system. Differential thermal analysis (DTA) scans were obtained simultaneously. Samples were run in air at a heating rate of  $10\text{ }^\circ\text{C}/\text{min}$ .

### Calorimetry

The general methodology of oxide melt solution calorimetry of carbonates has been described previously (Chai and Navrotsky 1993, 1996; Navrotsky 1997). High temperature oxide melt calorimetry of synthetic ankerites had been performed by a three step method (Chai and Navrotsky 1996). In the first step, the sample was dropped into a solvent-free crucible in the calorimeter at  $770\text{ }^\circ\text{C}$  and oxidized and decarbonated to a mixture of  $\text{Fe}^{3+}$ -bearing phases. The heat content of the decarbonated and oxidized sample was measured in a second transposed temperature drop experiment. The third step consisted of dropping and dissolving the oxidized product in the molten  $2\text{PbO}\cdot 2\text{B}_2\text{O}_3$  solvent at  $770\text{ }^\circ\text{C}$ . From these three steps, the enthalpy of drop solution involving decarbonation and oxidation was calculated, and the values compared for end-members and solid solutions to obtain heats of formation. This multistage process was required because the iron-bearing carbonates appeared to oxidize in an irreproducible fashion when introduced directly into the lead borate solvent, even when oxygen gas flowed over the surface of the melt. This three step procedure has now been simplified to a single direct drop-solution experiment by a new technique developed in our laboratory (McHale et al. 1997), in which a gas (in this case  $\text{O}_2$ ) is not only flushed above the melt

but is bubbled through the solvent by means of a small Pt capillary. This gas flow through the solvent brings the Fe<sup>2+</sup>-bearing phases into much more direct contact with an oxidizing environment, speeds oxidation by minimizing need for gas diffusion through the melt, and enhances dissolution by effectively stirring the solvent. These improvements occur without disturbing the calorimetric baseline signal or changing the calibration factor. Experiments with the most iron-rich disordered synthetic ankerite sample, ANK62495, FeCa(CO<sub>3</sub>)<sub>2</sub>, from Chai and Navrotsky (1996) showed well-behaved calorimetric peaks and an enthalpy of drop solution plus oxidation, 250.08 ± 1.79 kJ/mol, within experimental error of the value obtained by Chai and Navrotsky (1996) using the three step method (253.56 ± 1.84 kJ/mol), see Table 2.

Calorimetric measurements for the synthetic disordered dolomite were also performed at 770 °C using molten 2PbO•B<sub>2</sub>O<sub>3</sub> as the solvent. Because oxidation is not required, the experiments were not performed with bubbling gas through the solvent, but flowing gas over the melt was used to insure that the CO<sub>2</sub> released during solution was removed from the calorimeter (Navrotsky et al. 1994). Initial experiments were performed without drying the sample. The enthalpy of drop solution appeared more endothermic than that for ordered dolomite. This would suggest an enthalpy of formation more exothermic than that for ordered dolomite, which is not consistent with observations that ordered dolomite is the energetically favored low temperature phase. We then realized that the disordered dolomite contained water. The sample was subsequently dried for 12 hrs at 120 °C and immediately placed in an Ar-filled glove box to insure that the sample did not rehydrate. Drop solution experiments performed with the dried sample yielded a value of 366.49 ± 4.04 kJ/mol, which is less endothermic than that of ordered dolomite and consistent with ordered dolomite being the energetically favored phase at low temperatures.



Realizing the hygroscopic nature of the sample, we performed weight loss experiments with both samples of disordered dolomite used for calorimetry. The "dried" sample contained 0.85 wt% H<sub>2</sub>O, and the "as received" sample contained 11.7 wt% H<sub>2</sub>O. The enthalpies of drop solution given in Table 2 have been corrected for each observed H<sub>2</sub>O content assuming the water is physisorbed and has an enthalpy equivalent to that of pure water ( $H_{770\text{ }^{\circ}\text{C,gas}} - H_{25\text{ }^{\circ}\text{C,liquid}} = 74.28\text{ kJ/mol}$  (Robie and Hemingway 1995). The observation that most of the water is readily removed at 120 °C is consistent with it being physisorbed rather than strongly held in the structure.

## RESULTS AND DISCUSSION

### Synthetic disordered dolomite

Figure 1 shows the X-ray diffraction pattern of the synthetic dolomite, confirming its crystalline but largely disordered nature. This pattern is very similar to that published by Siegel (1961) for the material originally prepared using this synthetic route.

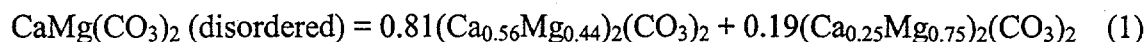
The sample was analyzed using TGA-DTA techniques to evaluate both the H<sub>2</sub>O content and decarbonation behavior. The sample was heated to a maximum temperature of 1200 °C and two major endothermic reactions (near 450 °C and 780 °C) were observed (see Fig. 2). These were followed by a diffuse endotherm at 800-1100 °C. These three endotherms also correspond to regions of weight loss in the TGA. To evaluate the nature of the decarbonation reactions, the sample was heated to a temperature just above the endotherm, quenched, and an X-ray pattern taken. The peak temperature of the first endotherm is ~ 450 °C, which is ~ 300 °C lower than is generally associated with the onset of decarbonation of dolomite. The X-ray diffraction pattern indicates that the

assemblage formed during heating is calcite + huntite ( $\text{CaMg}_3(\text{CO}_3)_4$ ) + periclase. The next endotherm occurs at a peak temperature of 780 °C and corresponds to the formation of CaO, but the carbonate phases huntite and calcite are still present. Complete decarbonation does not occur until 1100 °C, above which the assemblage is lime + periclase. The Eugui natural ordered dolomite, on the other hand, shows two decarbonation events which are relatively close in peak temperature (820 °C and 860 °C). The main difference between the samples is the much lower temperature for the first decarbonation peak of the synthetic disordered sample. This may reflect three factors: (a) smaller grain size which shortens diffusion paths and enhances decomposition kinetics, (b) water content which may also enhance reaction rates, and (c) much diminished thermodynamic stability. The diminished stability, though largely arising from Ca-Mg disorder, may also include small contributions from surface energy, from defects other than disorder, and from poorer crystallinity than that of natural ordered dolomite. However, these other terms cannot be assessed quantitatively. The formation of huntite rather than of  $\text{CaCO}_3$  and MgO also suggests a difference in both thermodynamic driving force and kinetic pathway, and the calorimetry (see below) confirms energetic instability of the disordered dolomite.

The drop solution calorimetric data (see Table 2) also suggest that this disordered  $\text{CaMg}(\text{CO}_3)_2$  is energetically very different from normal ordered dolomite, with an enthalpy of disordering of  $35.7 \pm 3.9$  kJ/mol (dried sample) and  $30.6 \pm 2.6$  kJ/mol (initial sample) compared to Eugui dolomite, consistent with disordering that is much more extensive than that of the heat-treated and quenched sample described by Navrotsky and Capobianco (1987) which is energetically only  $12 \pm 1$  kJ/mol above ordered dolomite.

Although the synthetic material is fine-grained (~ 1 micron), it is not nanophase and its X-ray diffraction peaks are fairly sharp (see Fig. 1). Thus we believe that the

contribution of surface energy to the energetics is relatively small ( $< 4$  kJ/mol). We attempted to order the synthetic sample, without coarsening it, with the goal of separating the energetics related to ordering and to grain size. The DSC experiments described above and several other heating studies showed, instead, that the disordered dolomite decomposed to a  $\text{MgCO}_3$ -rich phase, huntite,  $\text{CaMg}_3(\text{CO}_3)_4$  and a Ca-rich phase, nonstoichiometric dolomite,  $(\text{Ca}_{0.5+x}\text{Mg}_{0.5-x})_2(\text{CO}_3)_2$ , even before any decarbonation occurred. The complexity of powder X-ray diffraction patterns of these partially decomposed samples did not allow an assessment of the extent of ordering (identification of superstructure reflections) of the Ca-rich phase. The presence of huntite was clearly indicated, however. Low temperature natural  $\text{Ca}_{1+x}\text{Mg}_{1-x}\text{CO}_3$  dolomites show excess calcium up to  $x = 0.06$  (Goldsmith and Graf 1958; Reeder and Sheppard 1984). The energetics of a suite of natural Ca-rich dolomites have been determined (Chai et al. 1995). The enthalpy of formation from the binary carbonates of the most Ca-rich dolomite studied  $(\text{Ca}_{0.56}\text{Mg}_{0.44})_2(\text{CO}_3)_2$  is about  $+10.0$  kJ/mol. That of huntite, written as  $(\text{Mg}_{0.75}\text{Ca}_{0.25})_2(\text{CO}_3)_2$  is  $+8.9$  kJ/mol, taken from the thermochemical data of Robie and Hemingway (1995). Thus for the reaction



$\Delta H = 0.81 (\Delta H_f, \text{Ca-rich dolomite}) + 0.19 \Delta H_f (\text{huntite}) - \Delta H_f (\text{disordered dolomite}) = 0.81(10.0) + 0.19(8.9) - 23.9 = -14.1$  kJ/mol. This enthalpy is indeed exothermic, but not as exothermic as that associated with complete ordering (about  $-33$  kJ/mol). The values used in these calculations represent averages for the two determinations for Eugui dolomite and for disordered dolomite shown in Table 2.

Thus the decomposition of disordered dolomite follows the "Ostwald step rule", with huntite + nonstoichiometric dolomite energetically intermediate between the disordered and ordered stoichiometric phases (see Fig. 3). The observation of such decomposition, not possible for ordered  $\text{CaMg}(\text{CO}_3)_2$ , supports our finding that this precipitated material is indeed disordered and of much higher energy than the ordered phase.

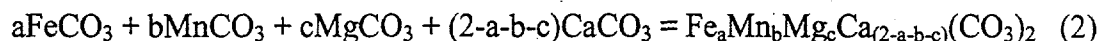
The calorimetric data for nonstoichiometric dolomites used in the calculation above was obtained from a set of natural samples. These tend to show complex ordering and domain structures which may make them energetically somewhat different from the decomposition products of the synthetic sample. It is possible that such features would make the natural sample energetically somewhat more stable than the nonstoichiometric decomposition product, but the extent of such a difference cannot be ascertained. If such a difference exists, then the decomposition products might be somewhat closer to the starting material (disordered dolomite) in enthalpy, but are very unlikely to lie above the starting material in energy. Thus the Ostwald step rule relationship described above will be maintained. Similarly, if the nonstoichiometric Ca-rich phase has a somewhat different composition, then the relative proportions of Ca-rich dolomite and huntite in the decomposition products will change, and the energetics will be slightly different, but the qualitative conclusions above are unlikely to be altered.

We note that the enthalpy of formation of huntite from calcite and magnesite reported in Robie and Hemingway (1995) is positive. This may reflect a possible problem in the enthalpy and free energy of either huntite itself or of magnesite, for which Robie and Hemingway (1995) give a somewhat more negative value than other tabulations. This issue deserves further study but does not affect the argument above,

since the assemblage of huntite plus nonstoichiometric dolomite will lie energetically between disordered and ordered dolomite in any case.

### Comparison of dolomite-ankerite solid solutions of different degrees of order

Calorimetric data for the natural dolomite-ankerite series are presented in Table 2, the last column of which gives the enthalpy of formation from the binary carbonates according to the reaction:



The effect of the varying small amounts of manganese on the heat of formation are accounted for in this reaction. To project these data onto the  $\text{Fe}_x\text{Mg}_{1-x}\text{Ca}(\text{CO}_3)_2$ , binary, we make the following assumptions. We take the heats of formation shown in Table 2 and assume that (a) the effect of the very slight deviation from Ca stoichiometry in the samples chosen can be neglected, and (b) Mn can be counted with Fe. Thus we calculate a composition,  $x = (a + b)/(a + b + c) = (\text{Fe} + \text{Mn})/(\text{Fe} + \text{Mn} + \text{Mg})$ . This is the compositional parameter chosen to compare natural and synthetic samples.

Using the data in this study and data from previous work (Chai and Navrotsky 1996, Navrotsky and Capobianco 1987), we classify the samples studied into three categories (see Fig. 4). The first group contains well ordered samples (Eugui dolomite and the natural ankerites in this study). The second group contains samples showing no ordering reflections and having, presumably, nearly complete disorder (the disordered dolomite studied in this work and the more iron-rich synthetic ankerites of Chai et al. (1995)). The third group contains samples with possible weak ordering reflections and

partial order (heat treated Eugui dolomite and Mg-rich synthetic ankerites. It is clear that the trends defined by the ordered and disordered samples are different, with the partially ordered samples intermediate. The straight lines drawn in Figure 4 for ordered and disordered samples are least squares fits. The scatter in the data from these trends probably results from compositional heterogeneity, the varying Mn-content, and the uncertainty and variability in the degree of order in the "ordered" natural samples (Reeder and Dollase 1989). Nevertheless, these trends allow fairly compelling conclusions to be drawn. (1) The degree of disorder has a marked effect on the enthalpy of formation, with negative enthalpies of formation from the binary carbonates for strongly ordered samples and positive enthalpies of formation for strongly disordered samples. This is consistent with negative (stabilizing) interlayer interactions competing with positive (destabilizing) intralayer interactions at all Fe/(Fe+Mg) ratios. (2) The intercepts of the lines for ordered and disordered phases (see Fig. 4) give an estimate of the enthalpy of complete disordering. For  $\text{MgCa}(\text{CO}_3)_2$ , this value is about  $32 \pm 5$  kJ/mol, or about three times the value initially suggested by Navrotsky and Capobianco (1987). This value is consistent with that obtained from calorimetry on the two samples of disordered  $\text{MgCa}(\text{CO}_3)_2$  ( $35.7 \pm 3.9$  and  $30.6 \pm 2.6$  kJ/mol), as discussed above. The trends shown suggest that the heat treated and quenched Eugui dolomite that Navrotsky and Capobianco used indeed suffered considerable reordering on cooling and falls on the trend of partially ordered samples. This is consistent with the findings of Reeder and Wenk (1983) who were unable to recover a fully disordered dolomite by quenching from above the critical disordering temperature. For  $\text{FeCa}(\text{CaO}_3)_2$ , the enthalpy of disordering is about  $18 \pm 5$  kJ/mol. The much smaller value for  $\text{FeCa}(\text{CO}_3)_2$  than for  $\text{MgCa}(\text{CO}_3)_2$  is consistent with the absence of fully ordered iron-rich phases on the  $\text{MgCa}(\text{CO}_3)_2$ - $\text{FeCa}(\text{CO}_3)_2$  join.

## ACKNOWLEDGEMENTS

This work is supported by the U. S. Department of Energy (Grant DE-FG03-97SF14749).

Sandia is a multiprogram laboratory operated by Sandia Corporation, a Lockheed Martin Company, for the United States Department of Energy under contract DE-AC04-94AL85000.

## REFERENCES CITED

- Chai, L, Navrotsky, A (1993) Thermochemistry of carbonate-pyroxene equilibria. Contributions to Mineralogy & Petrology 114:139-147
- Chai, L, Navrotsky, A (1996) Synthesis, characterization, and energetics of solid solution along the dolomite-ankerite join, and implication for the stability of ordered  $\text{CaFe}(\text{CO}_3)_2$ . American Mineralogist 81:1141-1147
- Chai, L, Navrotsky, A, Reeder, RJ (1995) Energetics of calcium-rich dolomite. Geochimica et Cosmochimica Acta 59:939-944
- Davidson, PM, Symmes, GH, Cohen, BA, Reeder, RJ, Lindsley, DH (1993) Synthesis of the new compound  $\text{CaFe}(\text{CO}_3)_2$  and experimental constraints on the  $(\text{Ca,Fe})\text{CO}_3$  join. Geochimica et Cosmochimica Acta 46:1-22
- Goldsmith, JR, Graf, DL (1958) Structural and compositional variation in some natural dolomites. Journal of Geology 66:678-693
- Goldsmith, JR, Graf, DL, Witters, J, Northrop, DA (1962) Studies in the system  $\text{CaCO}_3\text{-MgCO}_3\text{-FeCO}_3$ : 1. Phase relations; 2. A method for major-element spectrochemical analysis; 3. Compositions of some ferroan dolomites. Journal of Geology 70:659-688
- McHale, JM, Navrotsky, A, Kowach, GR, Balbarin, VE, DiSalvo, FJ (1997) Energetics of ternary nitrides: The Li-Ca-Zn-N and Ca-Ta-N systems. Chemistry of Materials 9:1538-1546.
- Navrotsky, A (1997) Progress and new directions in high temperature calorimetry revisited. Physics and Chemistry of Minerals 24:222-241
- Navrotsky, A, Capobianco, C (1987) Enthalpies of formation of dolomite and of magnesian calcites. American Mineralogist 72:782-787
- Navrotsky, A, Rapp, RP, Smelik, E, Burnley, P, Circone, S, Chai, L, Bose, K, Westrich, HR (1994) The behavior of  $\text{H}_2\text{O}$  and  $\text{CO}_2$  in high-temperature lead borate solution calorimetry of volatile-bearing phases. American Mineralogist 79:1099-1109
- Reeder, RJ, Dollase, WR (1989) Structural variation the dolomite-ankerite solid-solution series: An X-ray, Mössbauer, and TEM study. American Mineralogist 74:1159-1167
- Reeder RJ, Sheppard, CE (1984) Variation of lattice parameters in some sedimentary dolomites. American Mineralogist 69:520-527



Reeder, RJ, Wenk, HR (1983) Structure refinements of some thermally disordered dolomites. *American Mineralogist* 68:769-776

Robie, RA, Hemingway, BS (1995) Thermodynamic properties of minerals and related substances at 298.15 and 1 bar ( $10^5$  pascals) pressure and high temperatures. U. S. Geological Survey Bulletin 2131

Rosenberg, PE (1967) Subsolidus relations in the system  $\text{CaCO}_3\text{-MgCO}_3\text{-FeCO}_3$  between 350 ° and 550 °C. *American Mineralogist* 52:787-796

Siegel, FR, (1961) Factors influencing the precipitation of dolomite. State Geological Survey of Kansas Bulletin 152:129-158

## TABLES

**Table 1.** Natural ankerite compositions studied, normalized to two cations

**Table 2.** Calorimetric data for dolomite and ankerite samples in this study (kJ/mol)

## FIGURES

**Figure 1.** X-ray powder diffraction pattern of synthetic disordered dolomite,  $\text{CaK}_2$  radiation.

**Figure 2.** Thermal analysis scan of synthetic disordered  $\text{MgCa}(\text{CO}_3)_2$ . Sample run in air at heating rate of  $10^\circ\text{C}/\text{min}$ .

**Figure 3.** Enthalpy, relative to  $\text{CaCO}_3 + \text{MgCO}_3$ , of several phase assemblages of  $\text{CaMg}(\text{CO}_3)_2$  composition. In this relative energy level diagram, the x-axis has no meaning.

**Figure 4.** Enthalpy of formation from the binary carbonates of phases projected along the  $\text{MgCa}(\text{CO}_3)_2$ - $\text{FeCa}(\text{CO}_3)_2$  join as discussed in text. Solid circles represent ordered dolomite and largely ordered natural samples. Squares represent the largely disordered synthetic  $\text{MgCa}(\text{CO}_3)_2$  described in this work and the synthetic samples showing no superstructure reflections measured by Chai and Navrotsky (1996). Triangles represent partly ordered samples, the quenched heat treated Eugui dolomite of Navrotsky and Capobianco (1987) and the synthetic samples with weak superstructure reflections measured by Chai and Navrotsky (1996).

**Table 1.** Natural ankerite compositions studied, normalized to two cations

	BM 1931-294	CAMB-UNK	AMNH
CaCO <sub>3</sub>	1.002 ± 0.007*	1.001 ± 0.002*	0.997 <sup>†</sup>
	0.997 <sup>†</sup>	0.999 <sup>b</sup>	
MgCO <sub>3</sub>	0.755 ± 0.030*	0.644 ± 0.024*	0.273 <sup>†</sup>
	0.769 <sup>†</sup>	0.646 <sup>†</sup>	
FeCO <sub>3</sub>	0.227 ± 0.027*	0.301 ± 0.019*	0.676 <sup>†</sup>
	0.221 <sup>†</sup>	0.292 <sup>†</sup>	
MnCO <sub>3</sub>	0.016 ± 0.002*	0.055 ± 0.006*	0.054 <sup>†</sup>
	0.013 <sup>†</sup>	0.063 <sup>†</sup>	
$x = \frac{\text{Fe} + \text{Mn}}{\text{Fe} + \text{Mn} + \text{Mg}}$	0.243 ± 0.035*	0.356 ± 0.030*	0.730 <sup>†</sup>
	0.233 <sup>†</sup>	0.355 <sup>†</sup>	

\* Microprobe analysis on calorimetric sample. Error is standard deviation of 5-6 point analysis.

<sup>†</sup> Reeder and Dollase (1989).

Note: Samples are the same as those studied by Reeder and Dollase (1989).

**Table 2.** Calorimetric data for dolomite and ankerite samples (kJ/mol)

Sample	x	$\Delta H_{ds}$	$\Delta H_f$
Eugui Dolomite*	0	$399.21 \pm 0.90(6)$	$-9.29 \pm 1.97$
Eugui Dolomite	0	$398.19 \pm 2.88 (10)$	$-8.27 \pm 3.47$
Disordered Dolomite**	0	$363.50 \pm 3.80(6)$	$26.42 \pm 4.44$
Disordered Dolomite†	0	$368.59 \pm 2.43(6)$	$21.32 \pm 3.34$
BM1931-294 (natural)	$0.24 \pm 0.03$	$362.12 \pm 1.42(13)$	$-1.29 \pm 2.32$
Camb/Unk (natural)	$0.36 \pm 0.03$	$352.04 \pm 3.36(9)$	$-2.88 \pm 4.06$
AMNH8059 ± (natural)	$0.73 \pm 0.03$	$304.98 \pm 1.80(13)$	$-8.37 \pm 2.91$
ANK62495* (synthetic)	1	$253.56 \pm 1.84 (6)$	$6.98 \pm 2.08$
ANK62495‡ (synthetic)	1	$250.08 \pm 1.79(3)$	$10.51 \pm 2.76$
CaCO <sub>3</sub> *		$196.85 \pm 0.49(6)$	
MgCO <sub>3</sub> *		$193.07 \pm 1.68(5)$	
FeCO <sub>3</sub> *		$63.69 \pm 0.83 (6)$	
MnCO <sub>3</sub>		$141.60 \pm 0.89(8)$	

Note: Errors are 2 standard deviations of the mean. The numbers in parentheses are the number of experiments, ds = drop solution, f = formation from simple carbonates.

\* Data and sample from Chai and Navrotsky (1996).

\*\*  $\Delta H_{ds}$  corrected for  $0.85 \pm 0.05\%$  adsorbed H<sub>2</sub>O, see text.

†  $\Delta H_{ds}$  corrected for  $11.7 \pm 0.7\%$  adsorbed H<sub>2</sub>O, see text.

‡ Gas bubbling through melt, on same sample as used by Chai and Navrotsky (1996), see text.

Figure 1

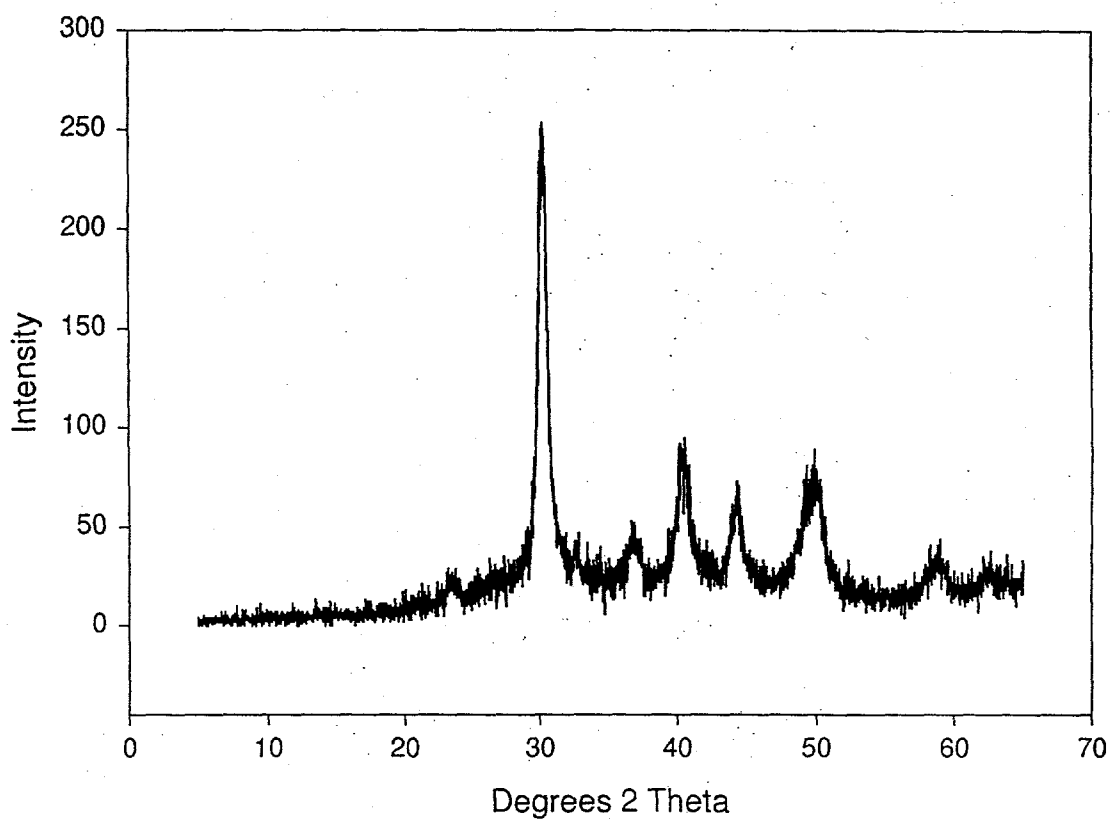


Figure 2

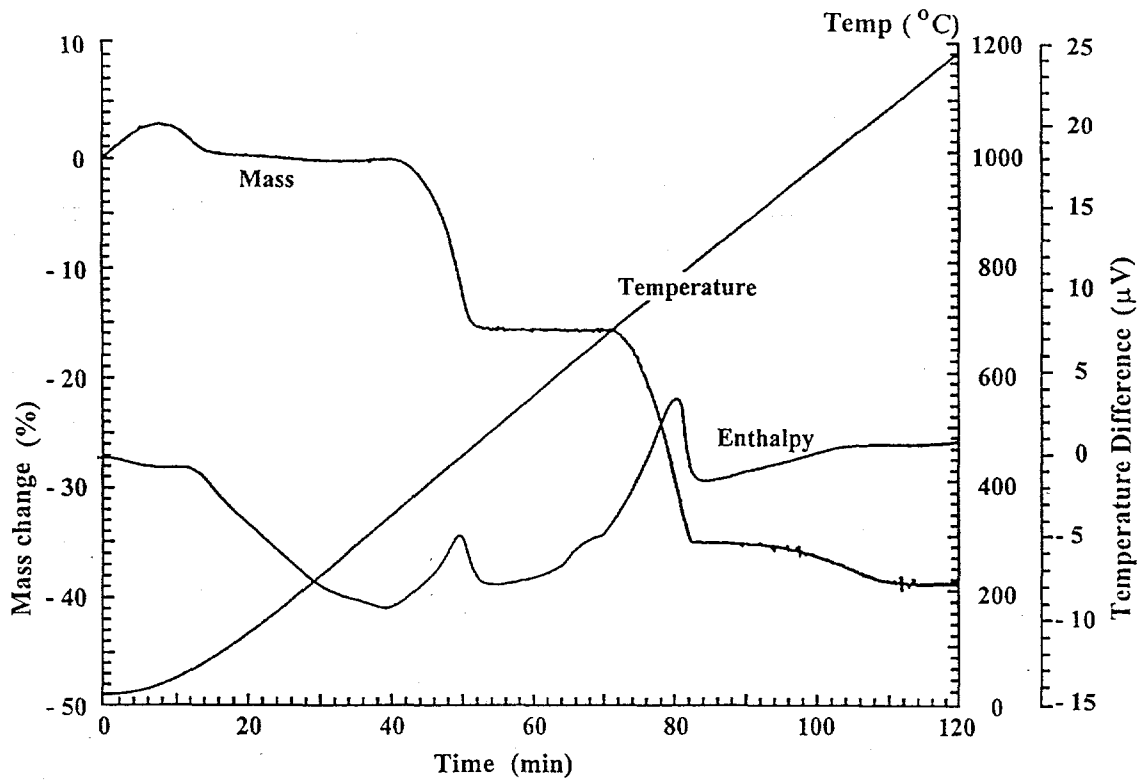


Figure 3

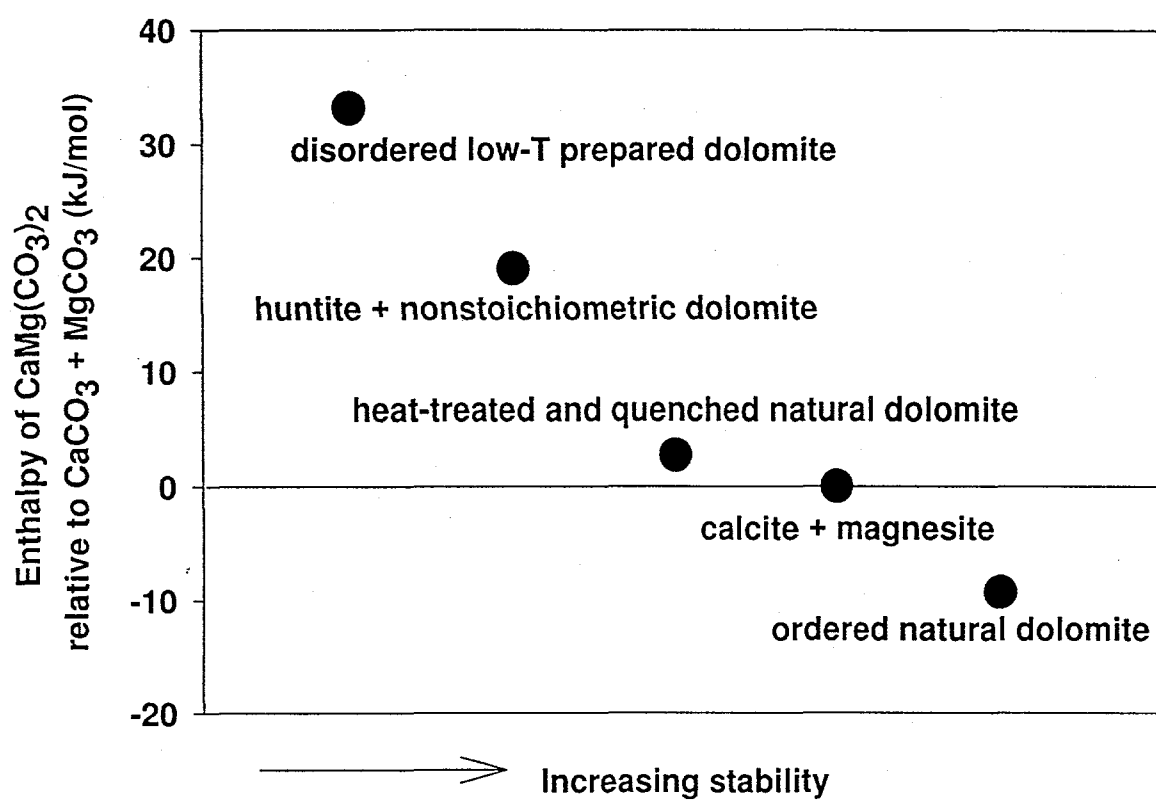


Figure 4

