

4-9

SANDIA REPORT

SAND95-1611 • UC-902

Unlimited Release

Printed March 1996

RECEIVED

APR 18 1996

OSTI

Tritium in Surface Soils at the Mixed Waste Landfill, Technical Area 3, Sandia National Laboratories, New Mexico

Jerry L. Peace, Tim J. Goering, Michael D. McVey

Prepared by
Sandia National Laboratories
Albuquerque, New Mexico 87185 and Livermore, California 94550
for the United States Department of Energy
under Contract DE-AC04-94AL85000

Approved for public release; distribution is unlimited.



SF2900Q(8-81)

DISTRIBUTION OF THIS DOCUMENT IS UNLIMITED

MASTER

Issued by Sandia National Laboratories, operated for the United States Department of Energy by Sandia Corporation.

NOTICE: This report was prepared as an account of work sponsored by an agency of the United States Government. Neither the United States Government nor any agency thereof, nor any of their employees, nor any of their contractors, subcontractors, or their employees, makes any warranty, express or implied, or assumes any legal liability or responsibility for the accuracy, completeness, or usefulness of any information, apparatus, product, or process disclosed, or represents that its use would not infringe privately owned rights. Reference herein to any specific commercial product, process, or service by trade name, trademark, manufacturer, or otherwise, does not necessarily constitute or imply its endorsement, recommendation, or favoring by the United States Government, any agency thereof or any of their contractors or subcontractors. The views and opinions expressed herein do not necessarily state or reflect those of the United States Government, any agency thereof or any of their contractors.

Printed in the United States of America. This report has been reproduced directly from the best available copy.

Available to DOE and DOE contractors from
Office of Scientific and Technical Information
PO Box 62
Oak Ridge, TN 37831

Prices available from (615) 576-8401, FTS 626-8401

Available to the public from
National Technical Information Service
US Department of Commerce
5285 Port Royal Rd
Springfield, VA 22161

NTIS price codes
Printed copy: A03
Microfiche copy: A01

SAND95 - 1611
Unlimited Release
Printed April 1996

Distribution
Category UC-902

**Tritium in Surface Soils
at the Mixed Waste Landfill, Technical Area 3,
Sandia National Laboratories, New Mexico**

Jerry L. Peace
Environmental Restoration Project
Sandia National Laboratories
Albuquerque, NM 87185-5800

Tim J. Goering and Michael D. McVey
Gram, Inc.
8500 Menaul Blvd. NE, Suite B-370
Albuquerque, NM 87112

Abstract

The Environmental Restoration Project at Sandia National Laboratories, New Mexico is tasked with assessment and remediation of the Mixed Waste Landfill in Technical Area 3. The Mixed Waste Landfill is an inactive, low-level radioactive and mixed waste disposal site. The Mixed Waste Landfill was subject to an extensive surface soil sampling program for tritium in July 1993. Results indicate that surface soils at the landfill contain significant levels of tritium. The classified area of the landfill contains the highest levels of tritium. Results also indicate that tritium has migrated beyond the fenced boundary of the classified area of the landfill.

Acknowledgements

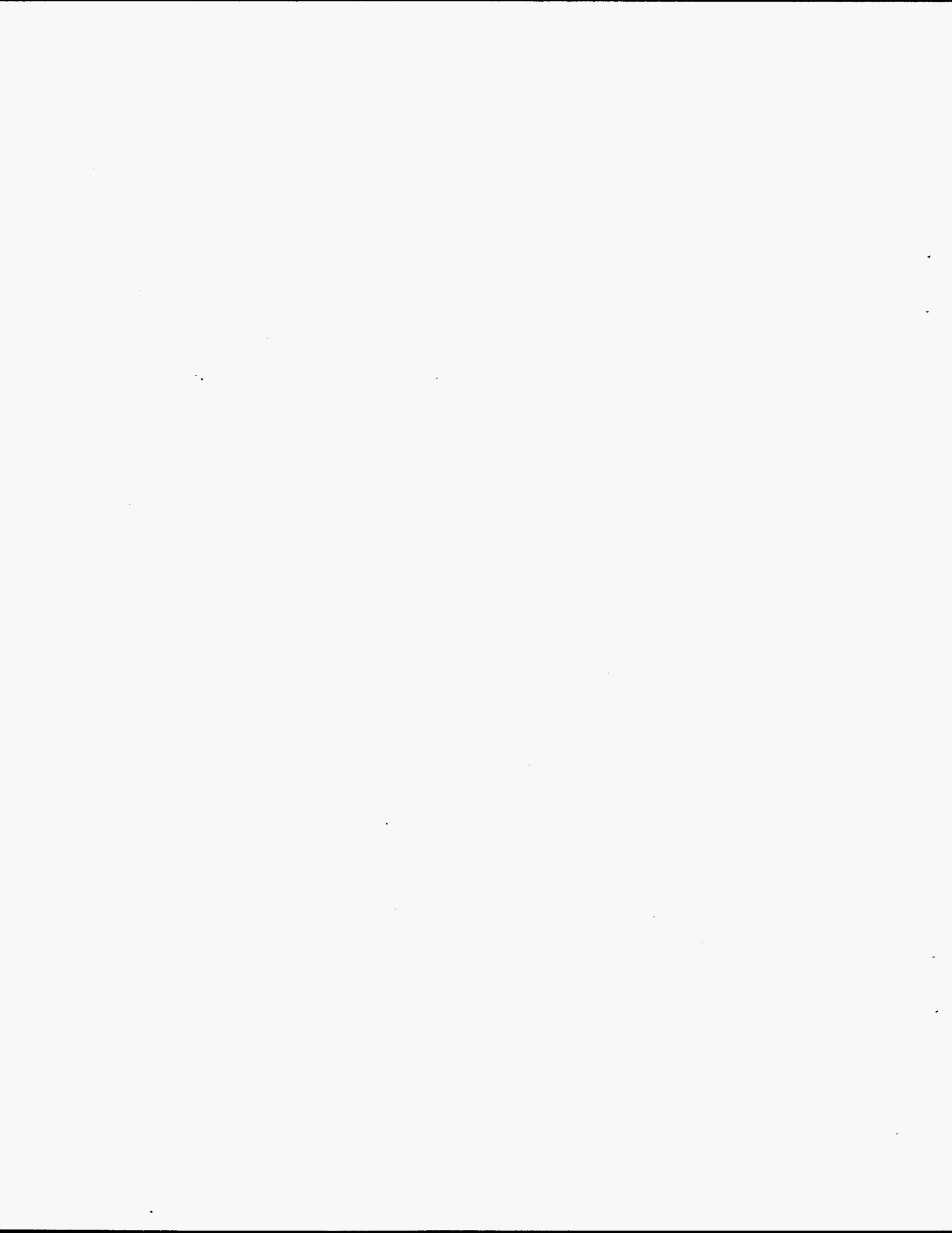
The authors wish to acknowledge the excellent technical support provided by Bill Rhodes, Craig Brown, Hans Oldewage, and Gordon Coulter of SNL,NM Department 7714, Radiation Protection Operations, and the logistical support provided by Earl Morse, Wyatt Booher, Erne Ross, and Pat Martinez of IT Corporation.

Contents

Introduction	1
Operable Unit History	1
1982 Surface Soil Sampling	3
1993 Surface Soil Sampling	6
Conclusions	10
References	11

Figures

1 Mixed Waste Landfill	2
2 Mixed Waste Landfill 1982 Tritium Surface Soil Sampling	4
3 Mixed Waste Landfill Tritium in Surface Soils, 1982	5
4 Mixed Waste Landfill 1993 Tritium Surface Soil Sampling	7
5 Mixed Waste Landfill Tritium in Surface Soils, 1993	8
6 Mixed Waste Landfill Classified Area Tritium Disposal, 1959 - 1983	9



Tritium in Surface Soils at the Mixed Waste Landfill, Technical Area 3, Sandia National Laboratories, New Mexico

Introduction

The Environmental Restoration (ER) Project at Sandia National Laboratories, New Mexico (SNL,NM) is tasked with assessment and remediation of the Mixed Waste Landfill (MWL) in Technical Area 3 (TA 3) under SNL,NM's Resource Conservation and Recovery Act (RCRA) HSWA Part B Operating Permit. The 2.6 acre compound was subject to an extensive surface soil sampling program for tritium in July 1993. A total of 92 surface soil samples were taken in and around the landfill. Sampling locations and density were based on MWL historical records, RCRA field investigation data, and previous SNL,NM environmental monitoring results. Sampling included the southern half of the MWL unclassified area which was not sampled during previous environmental investigations.

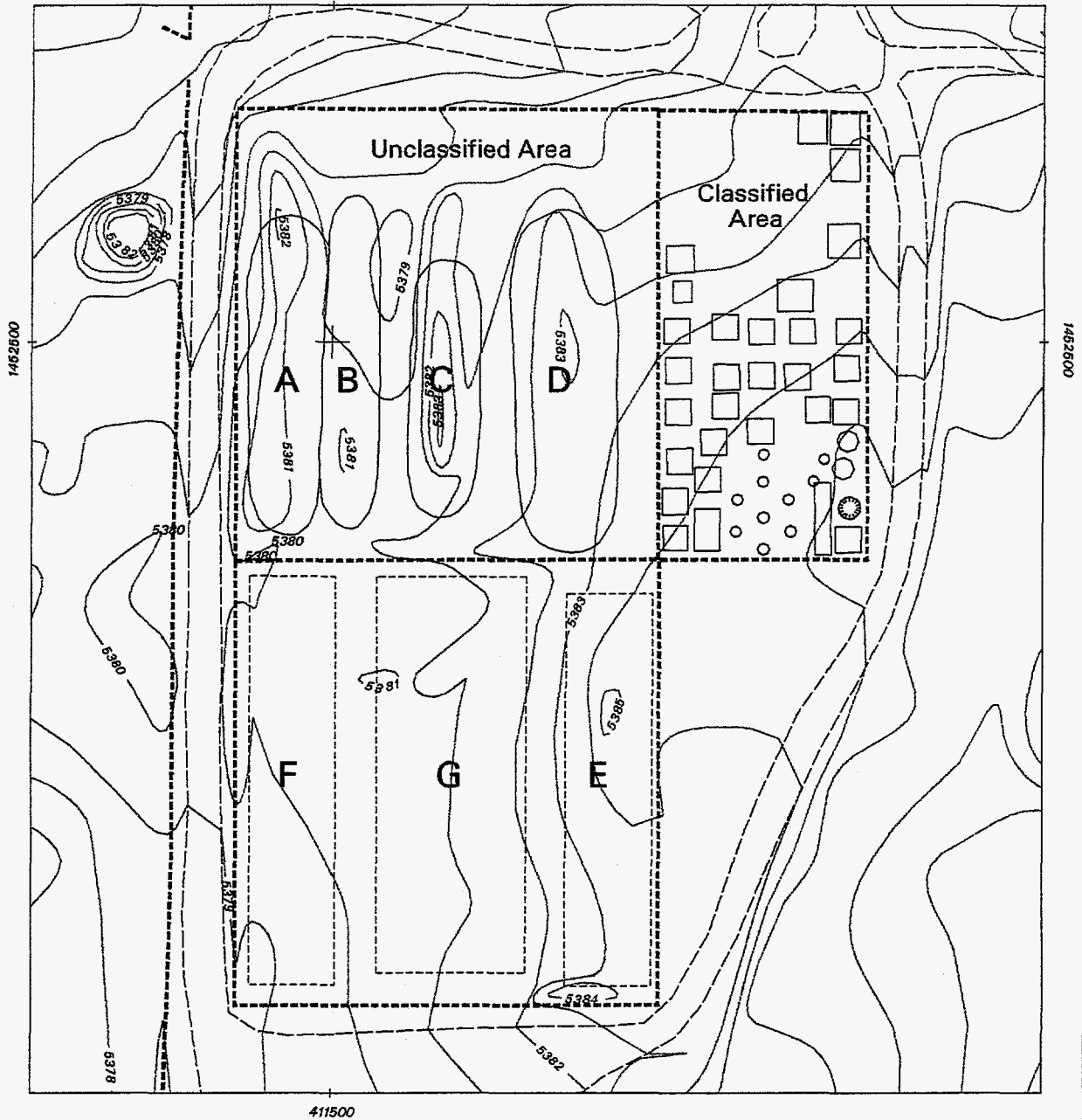
Operable Unit History

The MWL was operated from March 1959 to December 1988 as a disposal site for low-level radioactive and mixed waste. The MWL was opened originally as the "TA 3 low-level radioactive dump" when the existing low-level radioactive dump in TA 2 was closed in March 1959. The MWL was the primary disposal site for SNL,NM technical and remote test areas involved in nuclear weapons research and development.

The MWL consists of two distinct disposal areas: the classified area, occupying 0.6 acres, and the unclassified area, occupying 2.0 acres (Figure 1). Wastes in the classified area were disposed of in a series of vertical, cylindrical pits. Historical records indicate that early pits were 3 to 5 feet in diameter and 15 feet deep. Later pits were 10 feet in diameter and 25 feet deep. Once pits were filled with waste, they were backfilled with soil to within 3 feet of the surface then capped with concrete. Wastes in the unclassified area were disposed of in a series of north-south excavated trenches. Records indicate that trenches were 15 to 25 feet wide, 150 to 180 feet long, and 15 to 20 feet deep. Trenches were reportedly backfilled with soil on a quarterly basis and, once filled with waste, capped with originally excavated soils which had been stockpiled at the landfill.

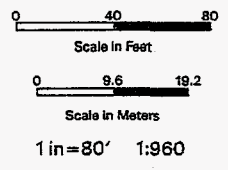
Wastes disposed of in classified pits included depleted, natural, and enriched uranium, thorium, barium, enriched lithium, tritium beds(?),





- Roads
- Fences
- Pits and Trenches
- One-Foot Contours
- Location of Trenches E, F, & G not actual
Engineering schematic only
Pending geophysical confirmation

Figure 1.
MIXED WASTE LANDFILL



Sandia National Laboratories, New Mexico
Environmental Restoration Geographic Information System

“Intentionally Left Blank”

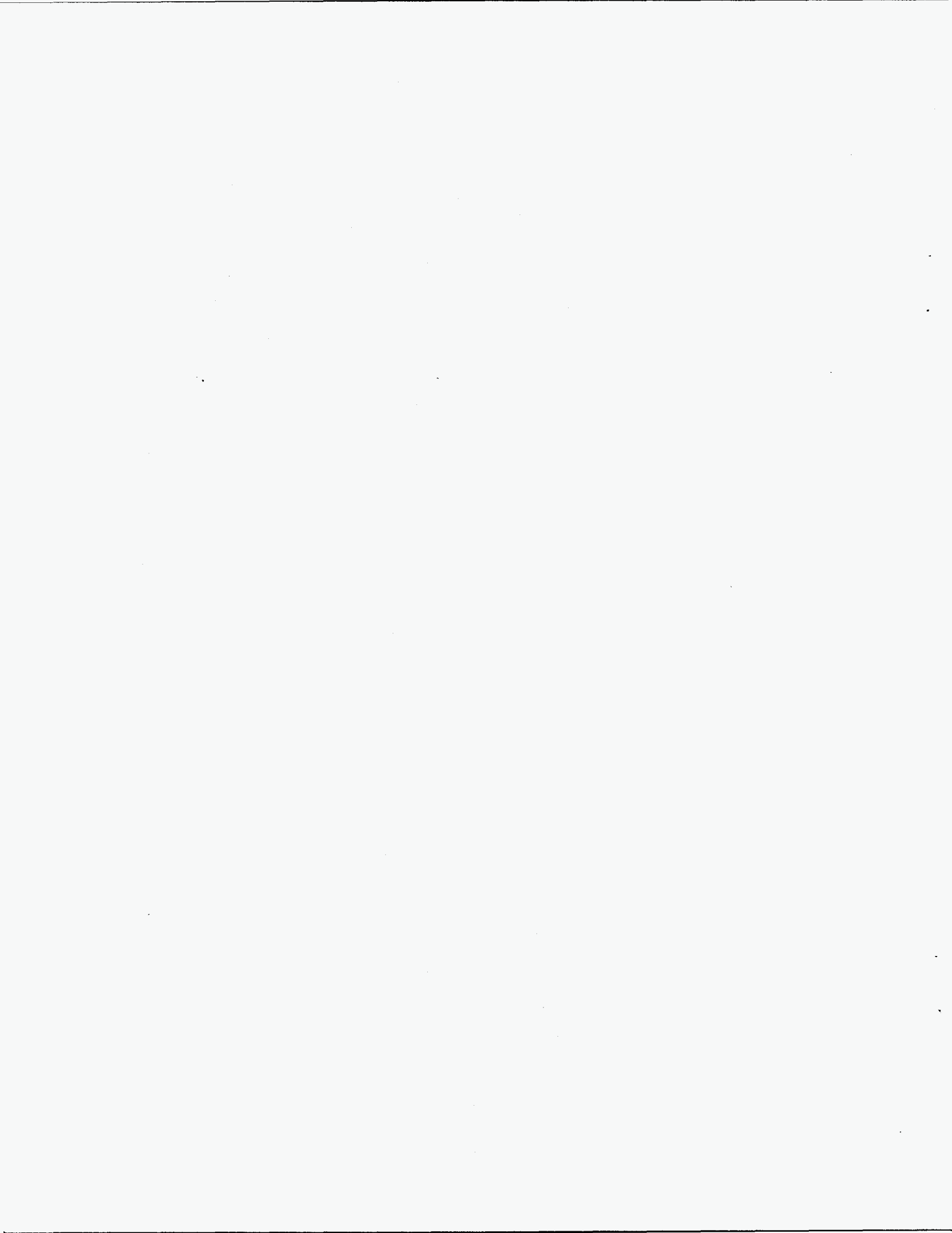
liquid scintillation cocktails, neutron generator tubes and targets, plutonium contaminated wastes, and plutonium contaminated weapons test debris from the Nevada test site. Wastes disposed of in unclassified area trenches included construction and demolition materials, contaminated equipment and soils, lead shielding, wood crates, steel drums, lead bricks, cardboard boxes, and dry solids. Wastes disposed of in unclassified area trenches were disposed of at random with no regard to waste source or type.

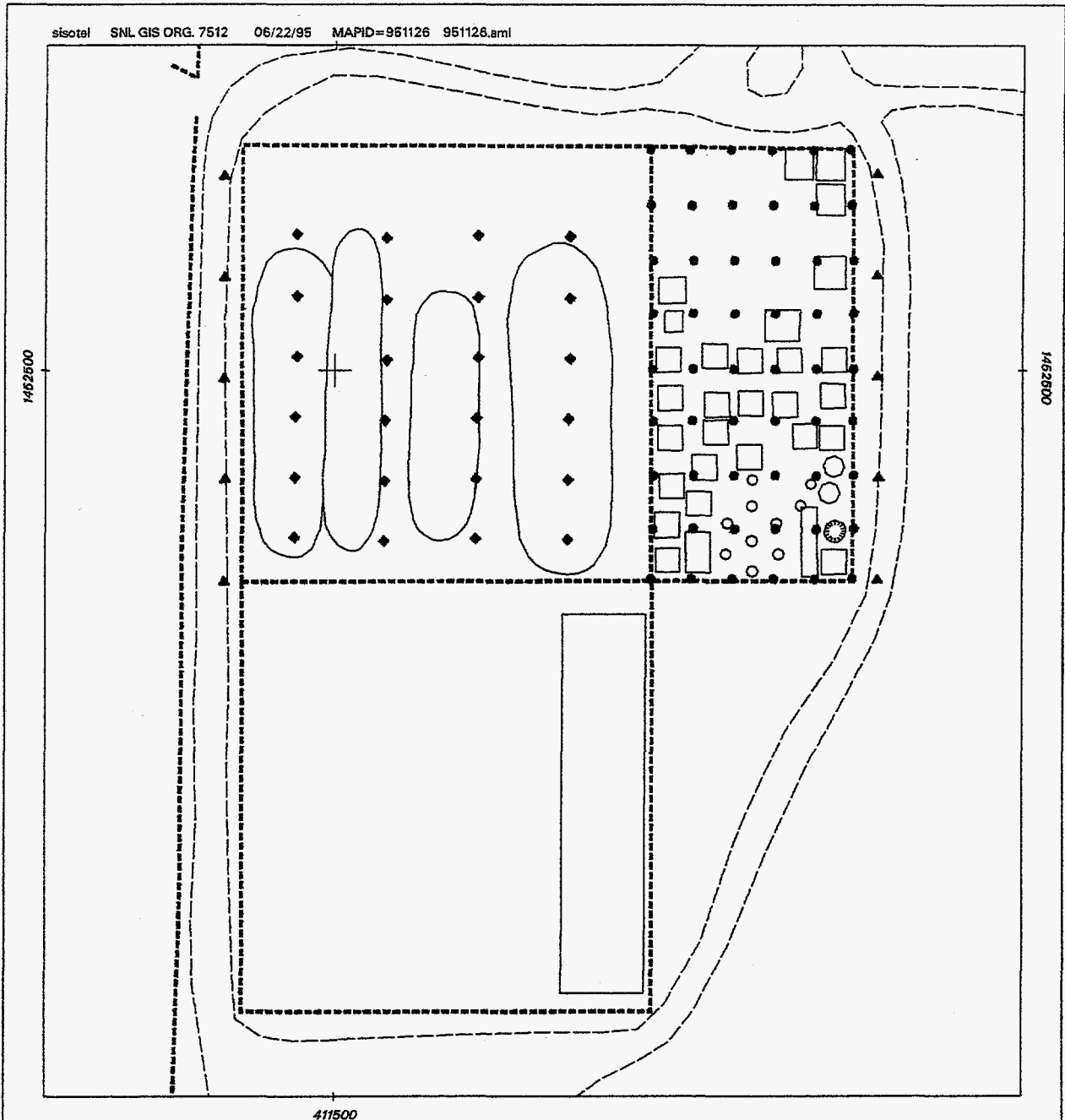
1982 Surface Soil Sampling

SNL, NM has maintained an environmental monitoring program since February 1959.¹ As part of this program, 100 surface soil samples were collected in June 1982 to determine the extent of tritium distribution and activity in surface soils at the MWL.² Surface soils were sampled to a depth of 2 inches at regular intervals along north-south traverses east of the classified area and west of the unclassified area; along north-south traverses inside the northern half of the unclassified area; along east-west traverses inside the classified area, and immediately adjacent to pit 33, the currently used classified disposal pit. Figure 2 depicts the MWL as it existed in 1982 and the areas of tritium surface soil sampling.

1982 sampling results are presented in Figure 3. Tritium activities are greatest within the classified area of the landfill. Tritium activities range from 10,336 pCi/g to 4,295 pCi/g around active pit 33. Tritium occurs in the unclassified area in soils around Trench C, the most recently active disposal trench, and Trench D. In 1967, approximately 270,000 gallons of coolant wastewater from the Sandia Engineering Reactor in TA 5 were disposed of in Trench D. The trench already contained miscellaneous wastes at the time. Approximately 1 Ci of total radioactivity, mainly short-lived radionuclides, was discharged into the open trench with the cooling water.

The 1982 sampling data clearly indicate that tritium has migrated beyond the fenced boundary of the classified area. Tritium activities east of the classified area range from 7.84 pCi/g to 1.41 pCi/g. Migration is probably due to diffusion through the vadose zone due to a high concentration gradient in and around disposal pit 33. Sampling was not conducted in the southern half of the unclassified area in 1982 since this area was only recently opened for waste disposal.





**Figure 2. MIXED WASTE LANDFILL
1982 Tritium Surface Soil Sampling**

- Roads
- Fences
- Pits and Trenches
- ▲ Perimeter Surface Soil Samples
- Unclassified Area Surface Soil Samples
- ◆ Classified Area Surface Soil Samples

0 40 80
Scale in Feet

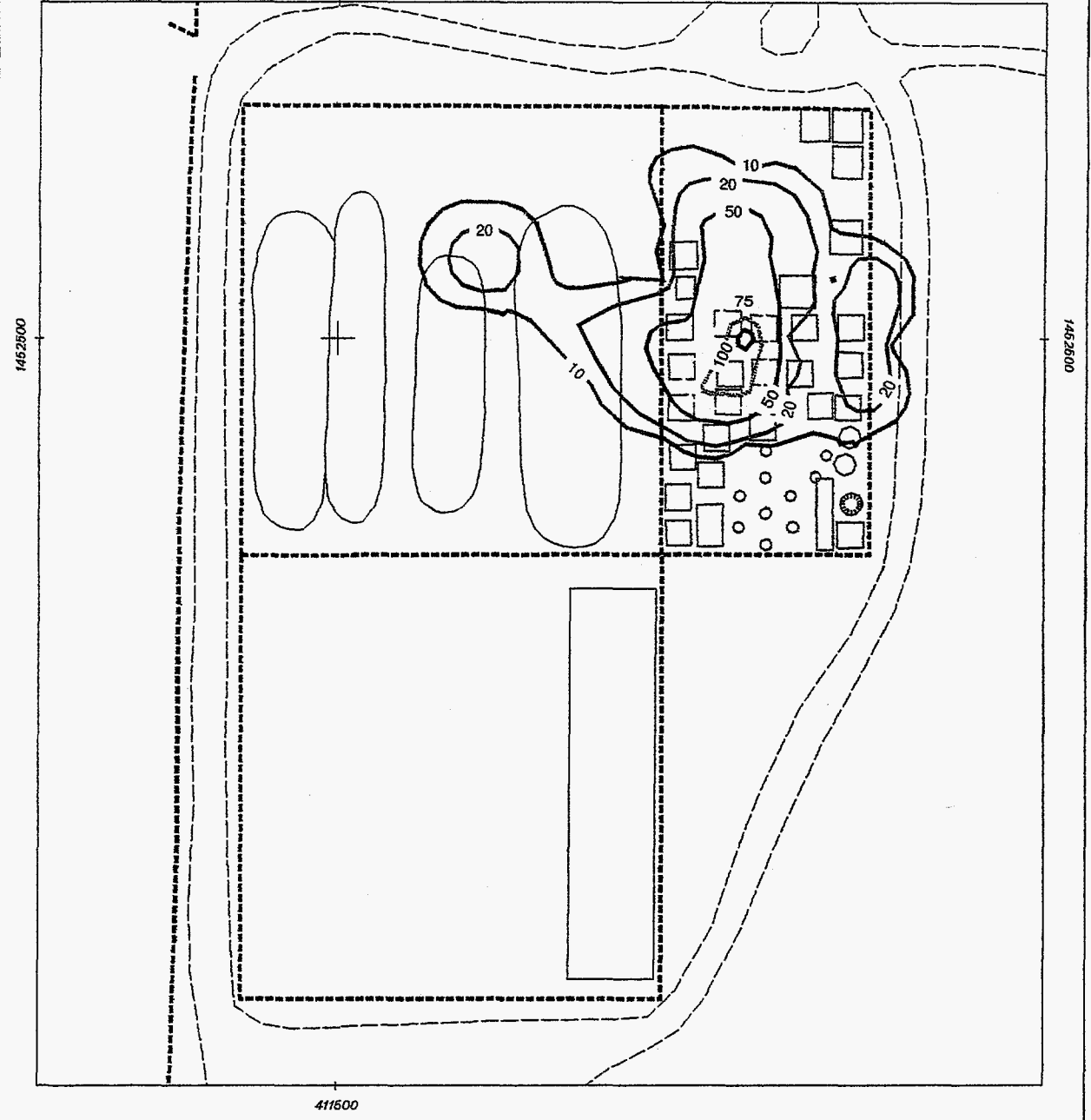
0 9.6 19.2
Scale in Meters

1 in=80' 1:960



Sandia National Laboratories, New Mexico
Environmental Restoration Geographic Information System

“Intentionally Left Blank”



- Roads
- Fences
- Pits and Trenches
- 10 — Tritium Isopleths, pCi/g

**Figure 3. MIXED WASTE LANDFILL
Tritium in Surface Soils, 1982**

0 40 80
Scale in Feet

0 9.6 19.2
Scale in Meters

1 in = 80' 1:960



Sandia National Laboratories, New Mexico
Environmental Restoration Geographic Information System

“Intentionally Left Blank”

1993 Surface Soil Sampling

The 1993 surface soil sampling program was conducted for three reasons.

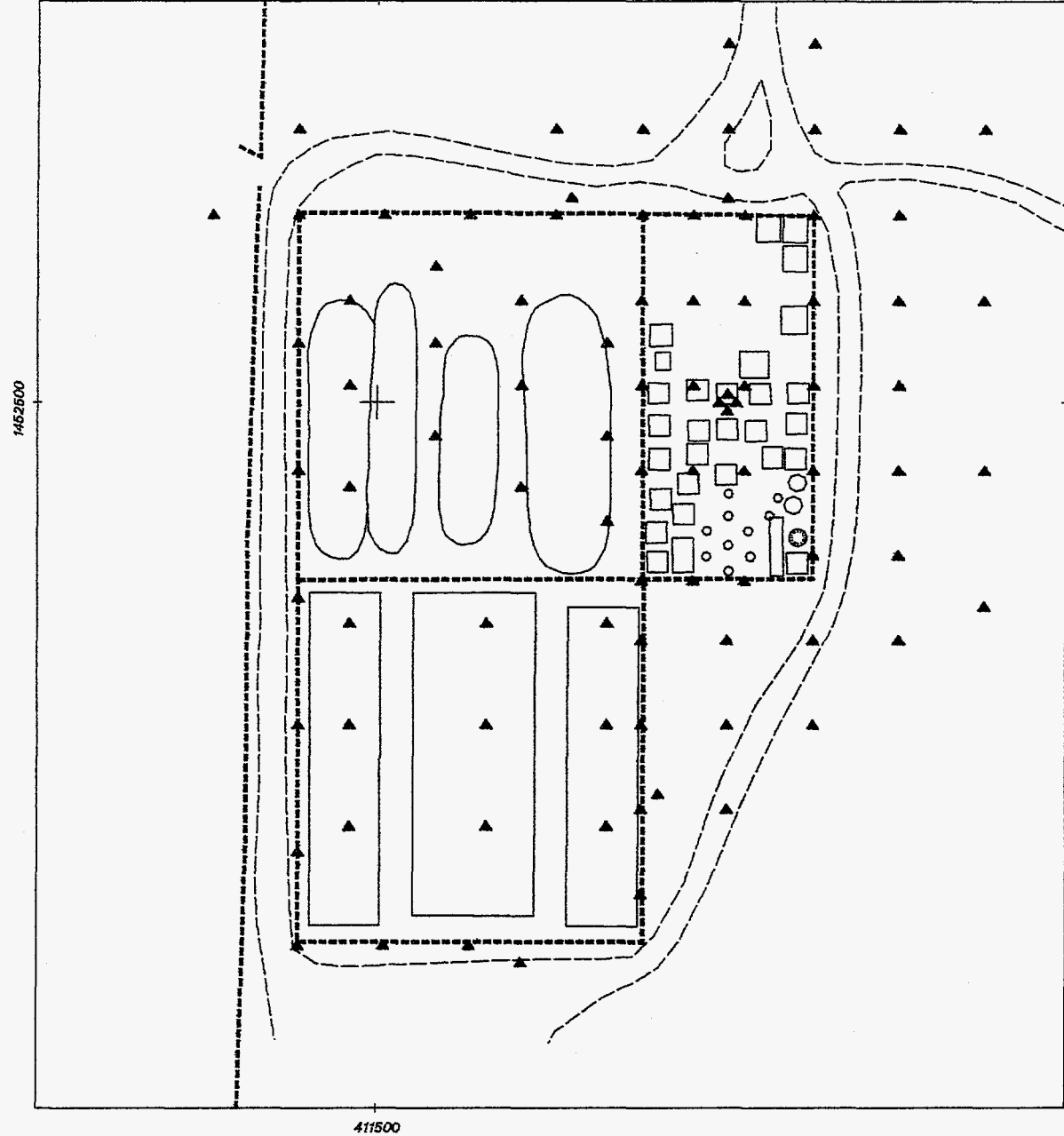
- 1) To continue SNL,NM's environmental monitoring program in order to detect the release and/or migration of radioactive material from the MWL;
- 2) To augment surface soil sampling for tritium conducted at the MWL in June 1982; and
- 3) To fulfill assessment requirements outlined in the MWL RCRA facility investigation work plan.

In July 1993, 92 surface soil samples were collected at the MWL as part of MWL RCRA facility investigation assessment activities (Figure 4). Sampling locations and density were based on MWL historical records, RCRA facility investigation field data, and 1982 sampling results. Sampling was expanded to include the southern half of the unclassified area which was not sampled in 1982. The southern half of the unclassified area of the landfill was permanently closed to waste disposal operations in December 1988.

1993 sampling results are presented in Figure 5. These data closely resemble 1982 results. Tritium activities, once again, are greatest within the classified area of the landfill and seem to form concentric rings around pit 33. The maximum tritium activity obtained during the 1993 program, 1103 pCi/g, was obtained at the southern edge of inactive pit 33.

Historical records indicate that a total of 1,861 Ci of tritium were disposed of at the MWL from March 1959 to January 1983. 1,451 Ci were disposed of in the classified area of the landfill. 822 Ci of the amount disposed of in the classified area were disposed of in pit 33 alone between May 1979 and January 1983. The remaining 410 Ci of the tritium disposed of at the MWL were probably disposed of in unclassified area Trenches A through D. Trench A, the first active trench, was excavated in late 1962 and Trench C, the last active trench, was backfilled and capped in early 1980. Figure 6 depicts the amount of tritium disposed of in specific pits in the classified area of the landfill from 1959 to 1983. No information has been found to date as to what amount of tritium was disposed of in Trenches A through D.





- Roads
- Fences
- Pits and Trenches
- ▲ Surface Soil Samples

**Figure 4. MIXED WASTE LANDFILL
1993 Tritium Surface Soil Sampling**

0 50 100
Scale in Feet

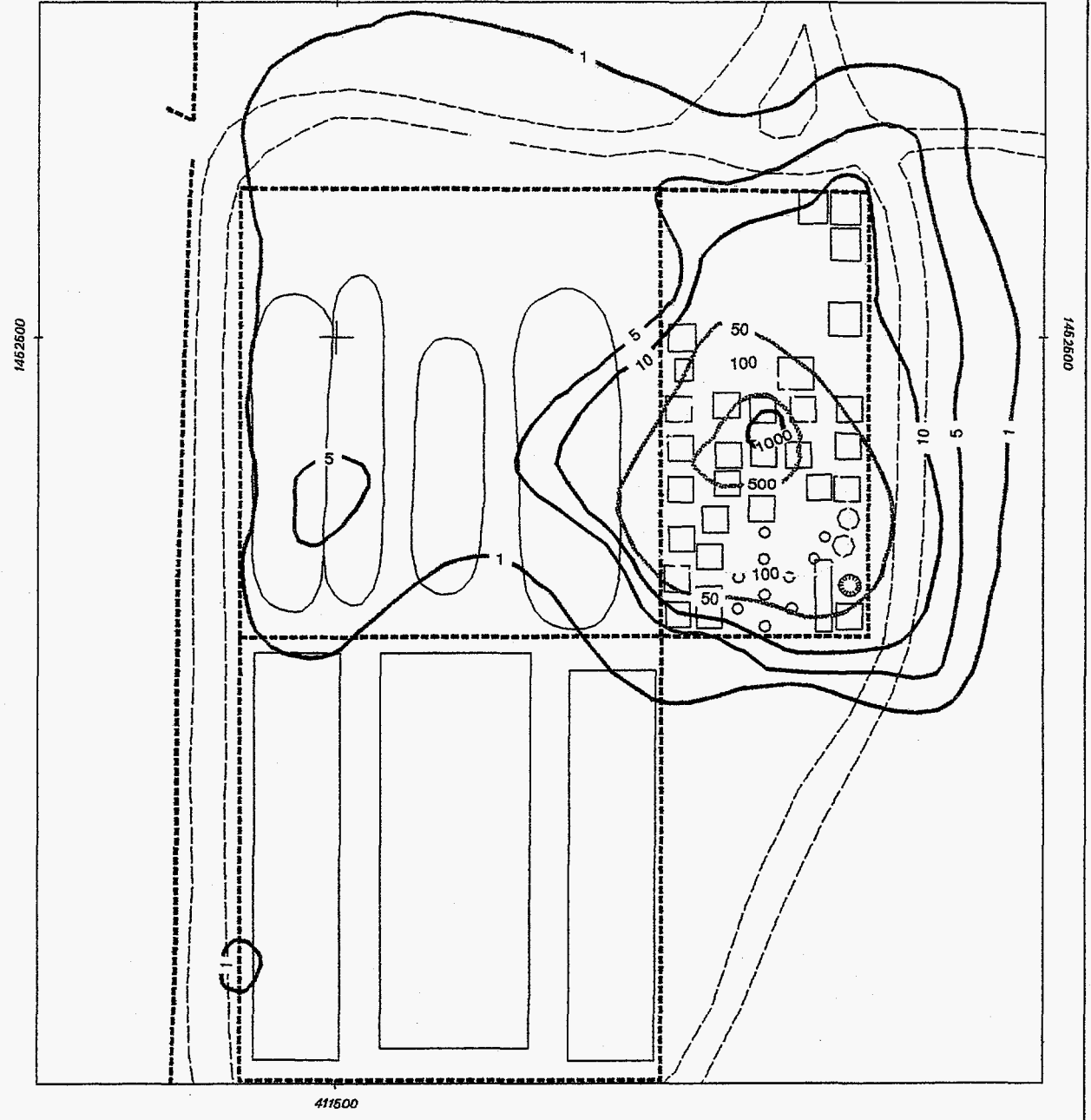
0 12 24
Scale in Meters

1 in = 100' 1:1200



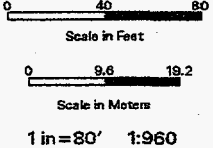
Sandia National Laboratories, New Mexico
Environmental Restoration Geographic Information System

“Intentionally Left Blank”



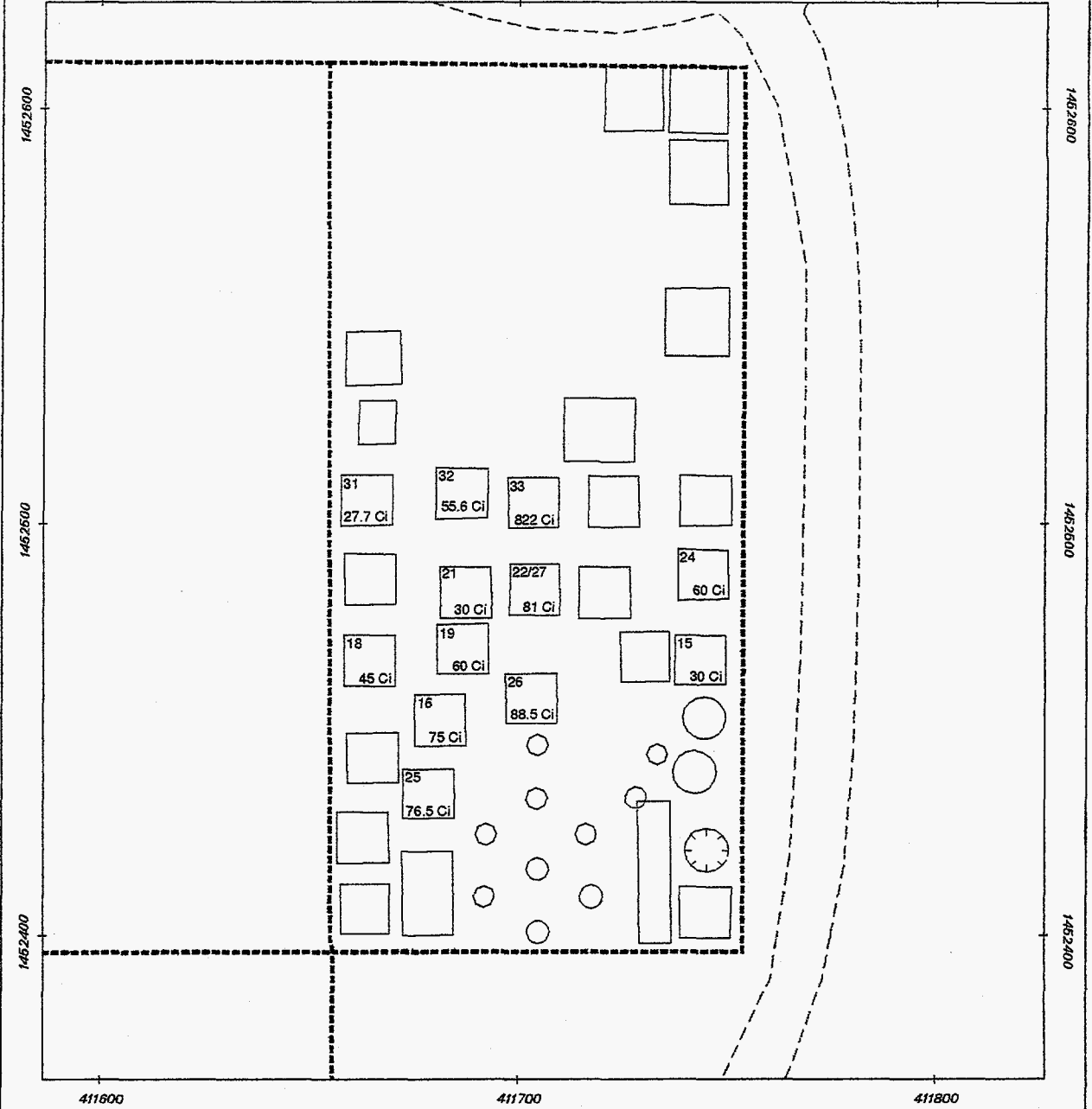
- Roads
- Fences
- Pits and Trenches
- 1 Tritium Isopleths, pCi/g

**Figure 5. MIXED WASTE LANDFILL
Tritium in Surface Soils, 1993**



Sandia National Laboratories, New Mexico
Environmental Restoration Geographic Information System

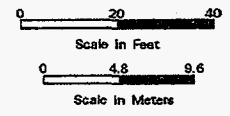
“Intentionally Left Blank”



**Figure 6. MIXED WASTE LANDFILL
Classified Area Tritium Disposal, 1959 - 1983**

- - - - - Roads
 - - - - - Fences

Pit Number **32**
55.6 Ci Tritium Activity



1 in = 40' 1:480



Sandia National Laboratories, New Mexico
Environmental Restoration Geographic Information System

“Intentionally Left Blank”

Conclusion

The distribution of tritium in surface soils in and around the MWL is easily attributed to tritium disposal practices and history at the MWL. 78% of the total tritium disposed of at the MWL was disposed of in the classified area. 57% of the total tritium disposed of in the classified area was disposed of in pit 33. 1982 and 1993 tritium activity and distribution in surface soils clearly substantiate MWL disposal records. Tritium distribution is restricted primarily to the northern half of the MWL (Figure 5). The greatest concentration of tritium occurs in the classified area with activity levels forming concentric rings around inactive pit 33.

1993 tritium activities are one order of magnitude less than 1982 tritium activities. This is probably due to a combination of 3 natural mechanisms: 1) radioactive decay of the tritium; 2) evapo-transpiration of the tritium; and 3) diffusion of the tritium into the vadose zone.



References

1. L. W. Brewer, **Environmental Monitoring Report for Sandia Laboratories from 1964 to 1972**, Sandia National laboratories, SLA-73-0339, March 1973.
2. G. C. Millard, C. E. Gray, T. N. Simmons, and B. L. O'Neal, **1982 Environmental Monitoring report**, Sandia National laboratories, Albuquerque, New Mexico, SAND83-0789, April 1983.

DISTRIBUTION:

1	MS 1309	Environmental Operations Records Center, 7512
1	MS 1311	H. S. Hwang, 7575
1	MS 1311	T. A. Culp, 7575
1	MS 1147	W. B. Cox, 7581
1	MS 1148	R. E. Fate, 7585
1	MS 1148	J. L. Peace, 7585
1	MS 1148	T. G. Goering, 7585
1	MS 1148	M. D. McVey, 7585
2	MS 0100	Document Processing, 7613-2 For DOE/OSTI
1	MS 1093	W. G. Rhodes, 7713
1	MS 1093	H. D. Oldewage, 7714-3
1	MS 9018	Central Technical Files, 8523-2
1	MS 0619	Print Media, 12615
5	MS 0899	Technical Library, 13414