

DE GRUYTER
OPENGEOCHRONOMETRIA 42 (2015): 107–125
DOI 10.1515/geochr-2015-0010Available online at
<http://www.degruyter.com/view/j/geochr>

LUMINESCENCE DATING OF FLUVIAL DEPOSITS IN THE ROCK SHELTER OF CUEVA ANTÓN, SPAIN

CHRISTOPH BUROW¹, MARTIN KEHL¹, ALEXANDRA HILGERS¹, GERD-CHRISTIAN WENIGER^{2,3},
DIEGO E. ANGELUCCI⁴, VALENTÍN VILLAVERDE⁵, JOSEFINA ZAPATA⁶, JOÃO ZILHÃO⁷

¹University of Cologne, Institute of Geography, Albertus-Magnus-Platz, 50923 Cologne, Germany

²Neanderthal Museum, Talstraße 300, 40822 Mettmann, Germany

³University of Cologne, Institute of Prehistoric Archaeology, Albertus-Magnus-Platz, 50923 Cologne, Germany

⁴Dipartimento di Lettere e Filosofia, Università degli Studi di Trento, via Tommaso Gar 14, 38122 Trento, Italy

⁵Departament de Prehistòria i d'Arqueologia, Universitat de València, Av. Blasco Ibañez 28, 46010 València, Spain

⁶Área de Antropología Física, Facultad de Biología, Universidad de Murcia, Campus Universitario de Espinardo, 30100 Murcia, Spain

⁷Seminari d'Estudis i Recerques Prehistòriques, Departament de Prehistòria, Història Antiga i Arqueologia,

Facultat de Geografia i Història, Universitat de Barcelona/ICREA, Spain

Received 5 March 2014

Accepted 6 January 2015

Abstract: The fluvial sediments at Cueva Antón, a Middle Palaeolithic rock shelter located in the valley of the River Mula (Southeast Spain), produced abundant lithic assemblages of Mousterian affinities. Radiocarbon dates are available for the upper part of the archaeological succession, while for the middle to lower parts chronometric data have been missing. Here we present luminescence dating results for these parts of the succession. Quartz OSL on small aliquots and single grain measurements yield ages ranging from 69 ± 7 ka to 82 ± 8 ka with a weighted mean of 72 ± 4 ka for sub-complexes AS2 to AS5. Equivalent dose estimates from large aliquots were highest and inconsistent with those from single grains and small multiple grain aliquots. This is probably caused by the presence of oversaturating grains, which have been quantified by single grain measurements. Additional post-IR IRSL measurements on coarse grained feldspar give strong support to a well-bleached quartz OSL signal. While independent chronometric control is missing, the results are within the expected age range and support the notion of a rapid accumulation of the fluvial deposits.

Keywords: Cueva Antón, Middle Palaeolithic, Luminescence dating, fluvial sediment, single grain dating, post-IR IRSL.

1. INTRODUCTION

Cueva Antón is a Palaeolithic rock shelter located in the region of Murcia in Southeast Spain. The several meter thick sedimentary fill is mainly of alluvial origin deposited by the adjoining River Mula (Angelucci *et al.*, 2013) (**Fig. 1**). Based on early findings during salvage

excavations in 1991, where Middle Palaeolithic occupations were identified at the basal levels of the alluvial succession (Martínez, 1997), more recent fieldwork between 2006 and 2012 gave evidence that human occupation also occurred during the accumulation of the upper parts of the succession (Zilhão *et al.*, 2010, 2012). Archaeological findings comprise abundant lithic artefacts, hearth features and a perforated *Pecten maximus* shell bearing residues of pigment (Zilhão *et al.*, 2010). Radiocarbon dating on wood charcoal from Cueva Antón using the ABOx-SC pre-treatment protocol (Acid-Base-Oxidation-Stepped Combustion; Brock *et al.*, 2010) dates

Corresponding author: C. Burow
e-mail: christoph.burow@uni-koeln.de

ISSN 1897-1695 (online), 1733-8387 (print)

© 2015 C. Burow *et al.* This work is licensed under the Creative Commons Attribution-NonCommercial-NoDerivatives 3.0 License.

unit II-b in the upper part of the archaeological succession (sub-complex AS1, see Fig. 2) to 32890 ± 200 BP (OxA-21244, 38440–36810 cal BP; Zilhão *et al.*, 2010, Angelucci *et al.*, 2013 and Wood *et al.*, 2013). Further radiocarbon dates are available for units I-k of AS1 (31070 ± 170 BP, OxA-20882) and II-h/i of AS2 (39650 ± 550 BP, OxA-18672), but are considered unreliable due to the applied ABA (Acid-Base-Acid) pre-treatment method that is shown to be less reliable in removing contaminants from charcoal (Jöris and Street 2008; Higham *et al.*, 2009; Higham 2011; Maroto *et al.*, 2012 and Wood *et al.*, 2013).

This study focuses on the application of luminescence dating to the fluvial sediments of the middle to lower parts of the archaeological succession (AS2 to AS5) at Cueva Antón. Optically stimulated luminescence (OSL) provides the tools to not only cross-check the existing chronological framework, but also to provide first chronometric age estimates for the archaeological succession where radiocarbon dating failed due to insufficient yields of the charcoal samples (Zilhão *et al.*, 2010). Moreover, the fluvial nature of the sediments (Angelucci *et al.*, 2013) as well as the protected depositional environment in the rock shelter facilitates a challenging test bed to investigate the potential of various luminescence dating techniques. Since the advent of OSL dating (Huntley *et al.*, 1985) there has been substantial progress both in instrumentation (cf. Bøtter-Jensen, 1997; Duller *et al.*, 1999; Bøtter-Jensen *et al.*, 1999, 2000, 2003, 2010; Thomsen *et al.*, 2008a and Lapp *et al.*, 2012) and in methodological aspects; for the latter most notably by the introduction of the single-aliquot regenerative-dose protocol (Murray and Wintle, 2000, 2003 and Wintle and Murray, 2006). One of the major challenges in luminescence dating with respect to fluvial sediments is the question of whether the luminescence signal was completely or only partially reset (also termed “bleached”) during transport prior to deposition (Wallinga, 2002; Jain *et al.*, 2004 and Rittenour, 2008). The use of increasingly smaller sub-samples (“aliquots”) (Olley *et al.*, 1998 and Duller, 2008) and single grain measurements (Duller *et al.*, 1999 and Bøtter-Jensen *et al.*, 2000) greatly improved the reliability of differentiating fully from partially bleached grains. Single grain dating has also been proved to be valuable for sediments in archaeological contexts, e.g. to identify the mixing of sediments due to human activity (Jacobs and Roberts, 2007). Likewise, substantial progress has been achieved in infrared stimulated luminescence (IRSL) dating of feldspar, which was long subordinate because of anomalous fading (Spooner, 1992, 1994), *i.e.* the loss of signal over time due to quantum mechanical tunnelling (Poolton *et al.*, 2002). Besides methods for correcting anomalous fading (Huntley and Lamothe, 2001; Auclair *et al.*, 2003 and Kars *et al.*, 2008) the development of elevated temperature post-IR IRSL (pIRIR) dating protocols (Buylaert *et al.*, 2009, 2012 and Thiel *et al.*, 2011), which measure non-fading feldspar

signals, initiated a series of studies to test their potential in various contexts (e.g. Kars *et al.*, 2012; Lowick *et al.*, 2012; Roberts, 2012 and Vasiliniuc *et al.*, 2012).

Considering all this, there is now a wide variety of luminescence dating techniques available, each with their own assets and drawbacks. The present study applies and compares OSL dating on multiple and single grains of quartz. Additional post-IR IRSL dating on K-rich feldspars are carried out to shed further light on the bleaching history of the sediments. The analysis of various luminescence characteristics through a series of laboratory experiments and cross-validation by comparison of the performance of the dating techniques used was carried out in order to ascertain the most appropriate method for establishing a reliable chronostratigraphy for the archaeological record at Cueva Antón.

2. STUDY SITE AND SAMPLES

The Cueva Antón rock shelter ($38^{\circ}3'51.84''N$, $1^{\circ}29'47.20''W$), located in the province of Murcia (South-east Spain), approximately 3 km north of the town of Mula and directly adjoining the River Mula, is one of several Middle Palaeolithic sites in the Murcia region (Zilhão and Villaverde, 2008). Situated in the vicinity of the Betic Cordillera to the north and the Mula-Pliego Basin to the south the rock shelter itself is located in the Mula valley at an altitude of 356 m above sea level. The local geology of Cueva Antón is mainly conditioned by the Paleocene to Miocene rocks that form the local Mula unit, with lower Miocene marls and marly limestones, which outcrop along several thrust faults, dominating (Fig. 1). The rock shelter itself is located at the base of a 25–30 m high escarpment of mainly middle-to-upper Eocene limestones comprising calcareous breccias and conglomerates, calcarenites as well as micritic and nummulitic limestones (Angelucci *et al.*, 2013).

The stratigraphic layout of the succession in Cueva Antón can be divided in four main complexes (from top to bottom): i) DD (Dam Deposits), made of fine, mostly silty beds that accumulated over the last decades (caused by occasional floodings of the rock shelter due to the construction of the La Cierva Dam started in 1929), ii) TL (Transitional Layers), formed of disturbed layers of uncertain age in intermediate position between DD deposits and underlying Pleistocene sediments (in part, backdirt from the 1991 trench), iii) AS (Archaeological Succession), formed of a number of Upper Pleistocene superposed alluvial sequences featuring distinct sedimentary facies, lateral variations, and including intercalations of slope material (particularly near the back wall), and iv) FP (Fine Palustrine), a weakly bedded, fine, organic-rich sediment forming the base of the exposed succession (Zilhão *et al.*, 2010 and Angelucci *et al.*, 2013).

It is the AS complex which is of particular geoarchaeological interest and is best described as a well-preserved alluvial sequence. A continuous accumulation of alluvial

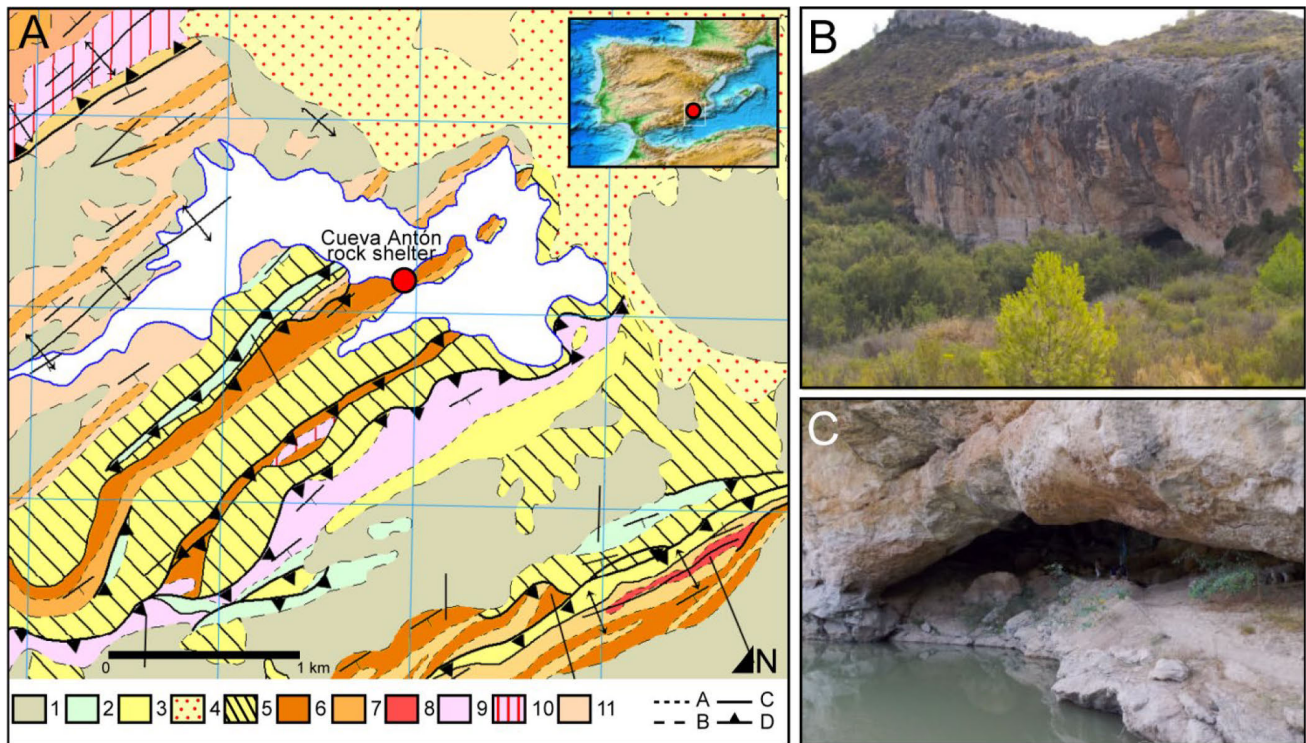


Fig. 1. Geological setting and photographs of the Cueva Antón rock shelter. A) Geological context of the Cueva Antón rock shelter in the geological map, scale 1:50 000 (IGME, 1972). Legend: A: Concordant contact; B: Discordant contact; C: Fault; D: Thrust; 1, undifferentiated, 2, limestones (Toarcian-Oxfordian, Tithonian), 3, polygenetic conglomerates, arenites and marls (Oligocene), 4, arenites, limestones and conglomerates (Tortonian), 5, marls and marly limestones (Lower Miocene), 6, marls with intercalations of nummulitic limestones (Lutetian), 7, limestones with *Discocyclina* (foraminifera) (Priabonian), 8, limestone conglomerates and marls (Paleocene-Lower Eocene), 9, nummulitic limestones (Lutetian), 10, limestones and marls (Ypresian-Lutetian), 11, marls with intercalations of nummulitic limestones (Priabonian). B) and C) photos of the Cueva Antón rock shelter.

beds with high sedimentation rates, the protective effect of the rock shelter and the incision of the River Mula preserved the sedimentary facies and archaeological elements from active surface dynamics, limited post-depositional dynamics and soil formation processes and spared the deposit from the subsequent action of fluvial dynamics (Angelucci *et al.*, 2013). Based on sedimentary and stratigraphic criteria the AS complex can further be subdivided into five sub-complexes (further comprising 48 different units). For a detailed synopsis of the stratigraphic complexes the reader is referred to Angelucci *et al.* (2013).

While AS1 could successfully be dated by the radiocarbon method, no radiometric ages are available for the sub-complexes AS2 to AS5. Attempts at radiocarbon dating the base of the succession have failed so far due to insufficient yields of the charcoal samples (Zilhão *et al.*, 2010). In order to provide first radiometric age estimates a total of nine samples were taken from the archaeological succession for luminescence dating by pushing opaque stainless steel tubes into various layers of two profiles (Fig. 2). The tubes were closed with opaque plastic caps, thus preventing an early reset of the luminescence signal. The first set of samples was taken during excavations in 2010 and a second during excavations in 2012. To determine the apparent residual dose in feldspar

an additional modern-analogue sample (CA-7) was taken from a sub-recent fluvial terrace directly adjacent to the cave entrance of Cueva Antón.

3. EXPERIMENTAL DETAILS

Sample preparation

All sample preparation procedures were conducted under subdued red illumination, following routine procedures (Wintle, 1997). Chemical treatment of the bulk samples involved hydrochloric acid (HCl 10%), hydrogen peroxide (H₂O₂ 10%) and sodium oxalate (Na₂C₂O₄). During this procedure any carbonates were dissolved, organic matter oxidised and the clay fraction dispersed. Coarse grained quartz and K-rich feldspar were separated using sodium polytungstate with densities of 2.58 g cm⁻³, 2.62 g cm⁻³ and 2.68 g cm⁻³. The enriched quartz fraction was further etched in hydrofluoric acid (HF 40%, 40 min) to remove any remaining feldspars and the outer layer of the quartz grains that received an alpha dose from the environment. Precipitated fluorides were removed by HCl (10%) wash for one hour. Depending on the amount of remaining sample material purified quartz and feldspars were sieved to 100–150 μm or 100–200 μm. For single

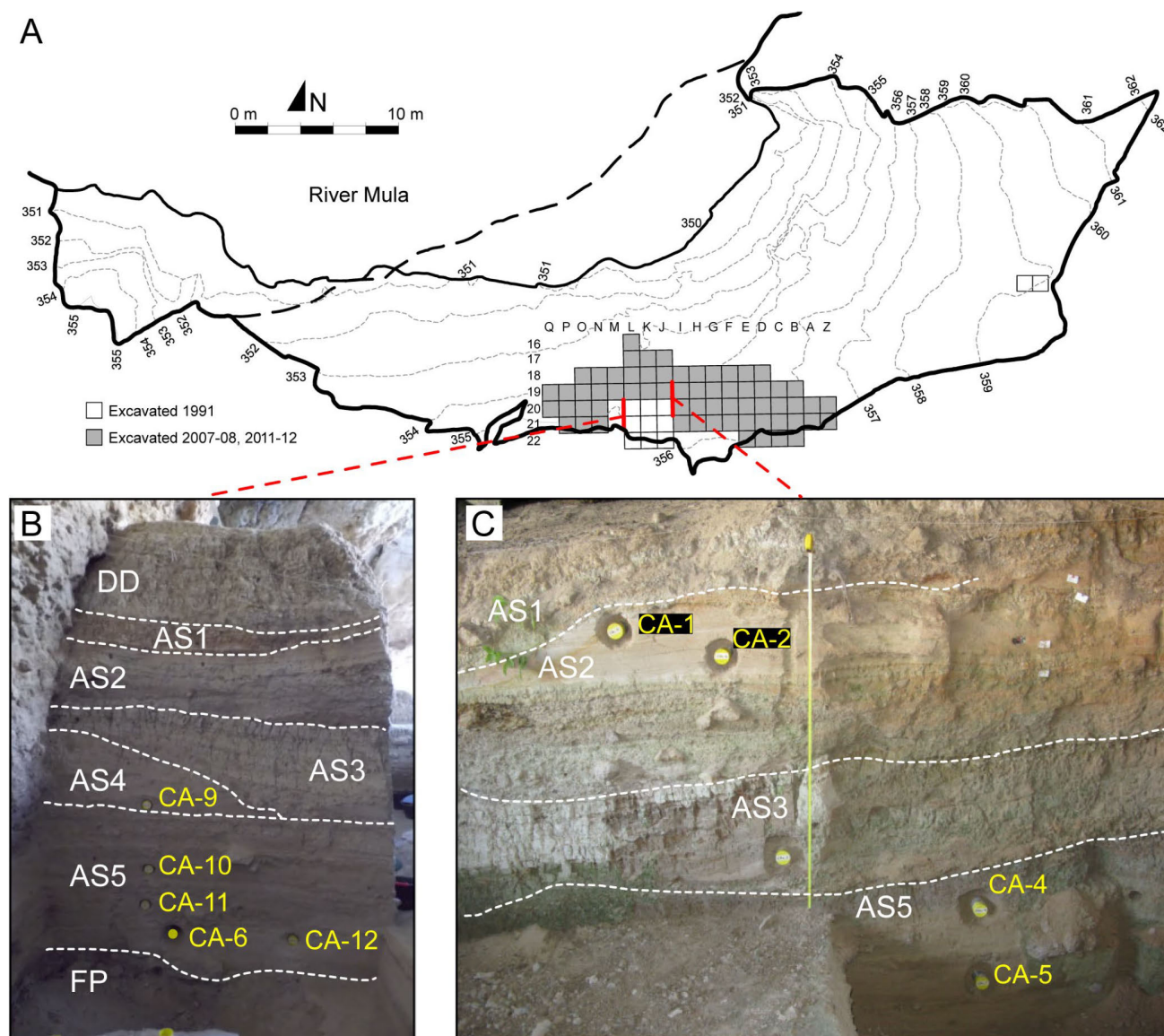


Fig. 2. Luminescence sampling at Cueva Antón. A) Site plan and excavated areas of the Cueva Antón rock shelter. Elevations are given in metres above sea level (modified from Angelucci et al., 2013). B) The W wall of trench L (square L20 to L21). Samples and excavation units: CA-9, II-ø; CA-10, III-e/h; CA-11, III-k/l; CA-12, III-m; CA-6, III-m. C) The E wall of trench J (square J19 to J20). Samples and excavation units: CA-1, II-e; CA-2, II-e; CA-4, II-y; CA-5, III-f. Dashed lines indicate stratigraphic complexes and sub-complexes. AS = Archaeological Succession, DD = Dam Deposits, FP = Fine Palustrine.

grain measurements of quartz the 200–250 μm grain size fraction was extracted. Additionally, for sample CA-9 the 40–63 μm quartz grain size fraction was prepared, applying the same chemical treatment as above. Mineral separation was achieved by etching the bulk sample in hexafluorosilicic acid (34%, 14 d). Precipitated fluorides were removed by HCl 10% wash.

Instrumentation

Luminescence measurements were conducted on Risø TL/OSL-DA-15/20 readers equipped with $^{90}\text{Sr}/^{90}\text{Y}$ beta sources for irradiation and delivering dose rates between

0.08 Gy s^{-1} and 0.15 Gy s^{-1} . Optical stimulation of quartz multiple grain samples was performed at 80–90% power using blue diodes (470 \pm 30 nm) for 40 s (Bøtter-Jensen et al., 1999). Single grains of quartz were stimulated for 2 s with a green Nd:YVO₄ diode-pumped laser (532 nm) delivering a power density of $\sim 50 \text{ W cm}^{-2}$ (Bøtter-Jensen et al., 2000). Feldspar samples were measured at 90% power using infrared diodes (880 \pm 80 nm) for 200 s. Luminescence signals were detected with an EMI 9235 photomultiplier through a 7.5 mm thick Hoya U340 (quartz) and 410 nm interference filter (feldspar).

The beta sources of three individual Risø TL/OSL reader with single grain attachments were calibrated using the BAG478 calibration quartz, which was thermally sensitised and homogeneously dosed to 8.03 Gy using a ^{60}Co γ -source. Following the approach of Ballarini *et al.* (2006) about 500 individual D_e values (in seconds) in average were obtained for each reader. The relative standard deviation of D_e values obtained for each single grain position remained $<20\%$ in all cases. The spatial variability in the delivered dose rate was assessed by 3D plots (Fig. S1 in the Appendix). It is evident that the spatial distribution of delivered dose rate is very specific to individual beta sources (cf. Spooner and Allsop, 2000; Ballarini *et al.*, 2006 and Lapp *et al.*, 2012). While two beta sources have a near-uniform dose rate distribution, a clear trend in delivered dose was identified for one of the beta sources and reconfirmed a previous calibration of the same source by Lomax (2009). When applying individual dose rates to calculate single grain D_e estimates, the overdispersion (OD), calculated using the central age model (CAM, Galbraith *et al.*, 1999), could be reduced by up to 6.5 percentage points (Table 1). However, even after correction of the non-uniform beta dose rate an OD of 8–12% remained, which is in the range or slightly larger than the values of 6.9% and 7.3% reported in Thomsen *et al.* (2005). Similar values of 11.4% and 12% for gamma dosed single grain distributions are also reported in Thomsen *et al.* (2007).

Equivalent dose estimation

Quartz OSL was measured using a standard quartz SAR protocol after Murray and Wintle (2000, 2003) employing preheat temperatures of either 200°C or 220°C for 10 s (see Section 4 — Luminescence characteristics). The cutheat temperature was always chosen to be 20°C lower than the preheat temperature. Values for L_x and T_x were derived from the initial 0.8 s of the OSL signal, minus a background estimated from the last 5.0 s of the stimulation curve. For single grain measurements the OSL signal was derived from the first 0.054 s of stimulation, minus a background of the last 0.4 s. IRSL on feldspars was measured using the pIRIR₂₂₅ and pIRIR₂₉₀ protocols (Buylaert *et al.*, 2009 and Thiel *et al.*, 2011) employing preheat temperatures of 250°C and 320°C for 60 s, respectively. For both protocols the pIRIR stimula-

tion time was 200 s, and after every SAR cycle the samples were IR-stimulated at 290°C (pIRIR₂₂₅) and 325°C (pIRIR₂₉₀) for 100 s to minimise any build-up of charge giving rise to a recuperated signal. The pIRIR signals were derived from the first 2.4 s of the IR stimulation with a subtracted background of the last 40 s. For single and multiple grains of quartz test doses of 20 Gy were applied, whereas a higher test dose of 40 Gy was used for all feldspar measurements. All dose response curves were fitted with a single saturating exponential function.

Dosimetry

Samples for dose rate determination were dried at 105°C for 24 h and finally homogenised with a mortar. The homogenised samples were filled in Marinelli beakers of different standardised geometries filled with either 830 g or 1459 g sample material. After storing the samples for at least four weeks to allow equilibrium re-establishment of ^{226}Ra and its daughter nuclides, the samples were measured for 20 h in a high-resolution gamma-ray spectrometer with a coaxial P-type high purity germanium (HPGe) detector. The uranium (^{238}U) and thorium (^{232}Th) contents were calculated by measuring the gamma rays of the corresponding daughter nuclides ^{226}Ra , ^{214}Pb , ^{214}Bi and ^{228}Ac , ^{212}Pb , ^{208}Tl , respectively. For all samples the specific activity (Bq kg^{-1}) of these nuclides were compared to check for indications of a disequilibrium in the ^{238}U and ^{232}Th decay series. None of the samples showed aberrant behaviour, hence a secular equilibrium was assumed. The potassium content (^{40}K) was determined by measuring the 1460 keV gamma ray that is emitted during the electron capture decay to ^{40}Ar . The nuclide activities of ^{238}U , ^{232}Th and ^{40}K were converted to dose rates using the conversion factors given in Guérin *et al.* (2011). To account for the attenuation of β -particles in grains correction factors of Mejdahl (1979) were used.

The cosmic-ray dose rates were calculated according to Prescott and Hutton (1994), taking into consideration the altitude and geomagnetic latitude of the sampling site and the thickness, density and water content of the overlying sediments. For near surface samples (CA-1, CA-2) the cosmic-ray dose rate was modelled using a polynomial component fitted to data presented by Prescott and Hutton (1988). The attenuation of cosmic-rays in the

Table 1. Summary of beta dose rate assessment for three Risø TL/OSL readers with single grain attachments. Calibration of the beta sources was done using a calibration quartz that was thermally sensitised and homogeneously dosed to 8.03 Gy using a ^{60}Co gamma source. The overdispersion was calculated using the central age model (Galbraith *et al.*, 1999). The variation in delivered beta dose rate was highest for Reader C (see also Fig. S1 in the Appendix).

Reader	Number of grains accepted/measured	Mean dose rate (Gy s^{-1})	Lowest individual dose rate (Gy s^{-1})	Highest individual dose rate (Gy s^{-1})	RSD (%)	Overdispersion in D_e values (mean dose rate)	Overdispersion in D_e values (individual dose rate)
B	635/1700	0.088	0.066	0.107	9.2	12.4 \pm 0.2	11.1 \pm 0.2
C	553/1700	0.148	0.104	0.201	15.4	18.2 \pm 0.3	11.7 \pm 0.2
F	415/2400	0.081	0.072	0.097	6.3	9.1 \pm 0.2	8.1 \pm 0.2

overlying rock was accounted for and a correction for the geometric shielding by the rockshelter was incorporated using the equations given by Dunne *et al.* (1999).

To account for the external alpha dose rate of the outer rim of the mineral grains alpha efficiencies (a -values) of 0.07 ± 0.02 and 0.035 ± 0.003 were used for feldspar and quartz, respectively (Preusser *et al.*, 2005 and Lai *et al.*, 2008). In addition, for K-rich feldspar an internal beta dose rate due to an internal ^{40}K -content has to be considered for age calculation. As the internal K-content was not specifically measured, a potassium concentration of $12.5 \pm 0.5\%$ (Huntley and Baril, 1997) was assumed. While indirect (Reimann *et al.*, 2012a) and direct (Zhao and Li, 2005 and Smedley *et al.*, 2012) determinations confirm a large variability of internal K-contents in feldspar, a mean potassium concentration of $12.5 \pm 0.5\%$ for multiple grain measurements is still likely to be a valid estimate (Smedley *et al.*, 2012).

Because water has a higher radiation absorption coefficient than air it is necessary to estimate the water content of the sample. Measured present day water contents varied from 1% to 19%. However, these values were assumed to be not representative for the water content over the burial time. On the basis of soil texture and pore space, assuming predominantly cold and dry climate conditions during the Late Pleistocene (Fletcher and Sánchez Goñi, 2008 and Vegas *et al.*, 2010) and taking into consideration the sheltering from direct precipitation, a long-term water content of $5 \pm 3\%$ was estimated instead and used to correct the alpha, beta and gamma dose rates with correction factors given in Aitken (1985). Dosimetry data are summarised in Table 2.

4. RESULTS

Luminescence characteristics

Quartz and feldspar from Cueva Antón showed bright OSL and IRSL signals, respectively (Fig. 3). Multiple grain aliquots were rejected when the recycling ratio exceeded 1.1 or was less than 0.9 (Murray and Wintle, 2000). Single grains of quartz were discarded when the recycling ratio exceeded 1.2 or was less than 0.8 (cf. Jacobs *et al.*, 2003). The error on the recycling ratio was not considered. Multiple grain aliquots of quartz and feldspar and single quartz grains were rejected when the recuperation ratio, *i.e.* the quotient of the L_x/T_x ratio of the zero dose and the L_n/T_n ratio of the natural dose, exceeded 5% (Murray and Wintle, 2000). Furthermore, only aliquots and single grains of quartz having an OSL IR depletion ratio (Duller, 2003) between 1.1 and 0.9 were accepted. Further aliquots and single quartz grains were rejected if the net OSL signal was not at least three standard deviations above background, the test doses error was $>5\%$, or when no meaningful curve-fit of the dose-response curve could be calculated.

To assess the variability in the saturation dose D_0 of quartz from Cueva Antón a single saturating exponential was fitted to all aliquots and single grains that passed the rejection criteria. Mean D_0 values varied between 63 and 67 Gy when measured on multiple grain aliquots. However, for a specific sample D_0 values varied significantly from aliquot to aliquot with standard deviations ranging from 7 Gy (8 mm aliquots) to 22 Gy (1 mm aliquots). The variability in D_0 values determined on single grains of quartz on samples CA-1 and CA-5 is even larger with mean saturation doses of 63 ± 28 Gy and 60 ± 27 Gy, respectively.

Table 2. Dosimetry data for quartz and feldspar samples from Cueva Antón. Nuclide contents of U, Th and ^{40}K were derived from measurements using a high-resolution gamma-ray spectrometer with a coaxial P-type high purity germanium (HPGe) detector. Measured water contents were assumed to be not representative for the water content over the burial time and a long-term water content of $5 \pm 3\%$ was estimated instead. The water content is expressed as mass of dry sediment. Q = quartz, FS = feldspar, WCM = water content measured, AWC = assumed water content.

Sample	Depth (m)	Mineral	Grain size (μm)	Uranium (ppm)	Thorium (ppm)	Potassium (%)	WCM (%)	AWC (%)	Cosmic dose rate (Gy ka^{-1})	Total dose rate D_0 (Gy ka^{-1})
CA-1	0.27	Q	100–150 200–250	1.15 ± 0.06	2.02 ± 0.13	0.40 ± 0.02	18.9	5 ± 3	0.103	0.87 ± 0.10
CA-1	0.27	FS	100–150	1.15 ± 0.06	2.02 ± 0.13	0.40 ± 0.02	18.9	5 ± 3	0.103	1.35 ± 0.14
CA-2	0.38	Q	100–150	1.18 ± 0.08	2.49 ± 0.17	0.46 ± 0.03	4.1	5 ± 3	0.100	0.97 ± 0.12
CA-4	1.54	Q	100–200	1.38 ± 0.07	2.88 ± 0.17	0.54 ± 0.02	16.7	5 ± 3	0.073	1.08 ± 0.13
CA-5	1.88	Q	100–200 200–250	1.01 ± 0.06	1.50 ± 0.10	0.33 ± 0.01	8.4	5 ± 3	0.066	0.70 ± 0.09
CA-5	1.88	FS	100–150	1.01 ± 0.06	1.50 ± 0.10	0.33 ± 0.01	8.4	5 ± 3	0.066	1.18 ± 0.16
CA-6	2.78	Q	100–150	1.15 ± 0.08	2.45 ± 0.17	0.42 ± 0.02	12.3	5 ± 3	0.048	0.86 ± 0.12
CA-9	2.26	Q	100–150	1.02 ± 0.06	1.84 ± 0.11	0.27 ± 0.01	1.5	5 ± 3	0.058	0.67 ± 0.08
CA-10	2.51	Q	40–63 100–150	0.93 ± 0.07	1.41 ± 0.11	0.27 ± 0.02	1.9	5 ± 3	0.053	0.65 ± 0.08
CA-11	2.66	Q	100–150	1.01 ± 0.07	1.56 ± 0.12	0.30 ± 0.02	2.3	5 ± 3	0.050	0.66 ± 0.08
CA-12	2.78	Q	100–150	1.22 ± 0.09	2.32 ± 0.18	0.39 ± 0.02	3.3	5 ± 3	0.048	0.85 ± 0.10

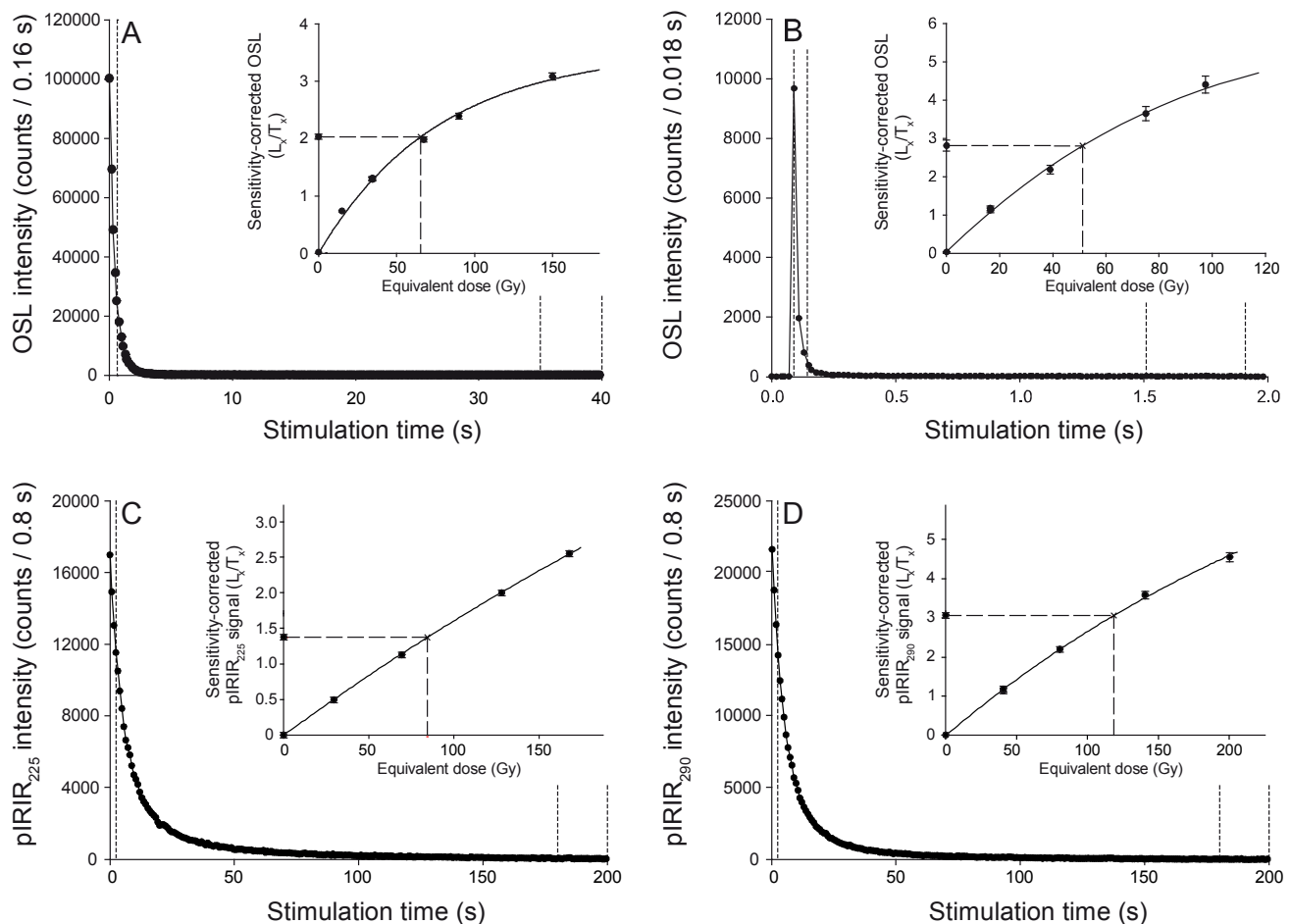


Fig. 3. Representative luminescence decay curves and corresponding dose response curves for quartz and feldspar samples from Cueva Antón. A) Quartz OSL intensity of a multiple grain aliquot (1 mm) from sample CA-6 during stimulation with blue diodes. B) OSL intensity of a single quartz grain from sample CA-1 during stimulation with a green laser. C) and D) show the pIRIR decay curves during elevated stimulation temperature readouts at 225°C and 290°C, respectively. For quartz multiple grain measurements the signal of the initial 0.8 s were used minus a background of the last 5 s of stimulation. For single grain measurements the OSL signal was derived from the first 0.054 s of stimulation minus a background of the last 0.4 s. Both pIRIR signals were derived from the first 2.4 s of the IR stimulation with a subtracted background of the last 40 s. The insets show the sensitivity corrected dose response curves. Vertical dashed lines indicate the initial integral used to obtain the luminescence signal and the time interval used for background subtraction.

The signal composition of quartz was checked by linearly modulated (LM-)OSL measurements conducted on five 8 mm aliquots for samples CA-1 and CA-6, respectively (Fig. S2 in the Appendix). Deconvolution of the LM-OSL curves was done using the `fit_LMCurve()` function of the R package ‘Luminescence’ (Kreutzer *et al.*, 2012). Analysis of the deconvolved LM-OSL curves revealed the presence of four signal components. Mean values for photoionisation cross-section of components were (from component 1 to component 4): $2.73 \pm 0.12 \times 10^{-17} \text{ cm}^2$, $2.63 \pm 0.21 \times 10^{-18} \text{ cm}^2$, $2.37 \pm 0.13 \times 10^{-19} \text{ cm}^2$, and $2.32 \pm 0.4 \times 10^{-20} \text{ cm}^2$. Component 1 can be associated with the fast component. For these samples the fast component is dominant and makes up 80–85% of the net OSL signal.

A preheat plateau test was done on 8 mm aliquots from sample CA-1 (Fig. 4). The D_e was measured in groups of five for different preheat temperatures in steps of 20°C ranging from 180°C to 300°C (held for 10 s). The cutheat temperature was always chosen to be 20°C lower than the preheat temperature. Fig. 4 indicates a preheat plateau between 200–240°C. Additionally, a set of combined dose recovery preheat plateau tests were carried out on small aliquots (1 and 2 mm) of samples CA-1, CA-2 and CA-9 (Fig. 5). The naturally trapped charge was removed by blue stimulation for 150 s at room temperature. The samples were then given a laboratory dose of 60 Gy. For all samples the dose recovery ratios were in agreement within 10% of unity for preheat temperatures from 180°C to 280°C.

Based on these tests a preheat temperature in the range of 200–240°C was considered to be appropriate for the samples under study. For all subsequent quartz OSL measurements a preheat/cutheat combination of either 200/180°C or 220/200°C was used. The same thermal treatment was applied in the SAR protocol for single grain measurements.

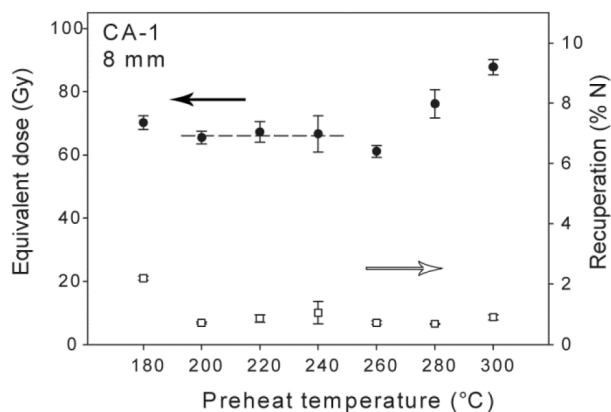


Fig. 4. Dependency of D_e on preheat temperature deduced from a preheat plateau test for sample CA-1. Filled circles indicate the mean D_e of five aliquots measured for each preheat temperature. The error bars are the standard error of dose estimates obtained for each temperature. Open squares are the recuperation rate, i.e. the quotient of the L_x/T_x ratio of the zero dose and the L_n/T_n ratio of the natural dose, expressed in percent. The preheat plateau test was conducted on large 8 mm aliquots and shows a well-defined preheat plateau ranging from 200°C to 240°C. The mean recuperation rate always remained below 5% of the natural signal.

To check the applicability of all applied protocols for quartz and feldspar a series of dose recovery tests were conducted. Details on the dose recovery tests and their results are given in **Table 3**. In all cases the administered dose could be recovered within 10% of unity. For quartz the mean dose recovery ratio was 0.99 ± 0.04 and 1.04 ± 0.06 for feldspar. The dose recovery tests on feldspar indicate a better reproducibility of the pIRIR₂₂₅ signal over the pIRIR₂₉₀ signal.

Table 3. Summary of dose recovery tests. Small aliquots of quartz were optically bleached for 150 s at room temperature with blue diodes. The natural OSL signal of single quartz grains was removed by a repeated green laser stimulation for 4 s (at 25% laser power) at room temperature with an intermediate pause of 10000 s (cf. Duller, 2012). Cross-checking the OSL decay curves of both stimulations revealed that the natural signal of all grains was fully reset prior to irradiation. Feldspar aliquots were bleached for 1 h in a Hönle SOL2 solar simulator^(a) and in the Risø TL/OSL reader by a repeated 200 s IR stimulation with an intermediate pause of 1000 s^(b). For the aliquots bleached in the solar simulator residual doses of 4.2 Gy (pIRIR₂₂₅) and 12.6 Gy (pIRIR₂₉₀) were subtracted, which were measured on separate aliquots after the same bleaching conditions (see Fig. S5 in the Appendix). In all cases the applied laboratory doses could be recovered within 10% of unity. SG = single grain.

Sample	Mineral	Protocol	Grain size (μm)	Aliquot diameter (mm)	Given dose (Gy)	n	Dose recovery ratio
CA-1	Q	SAR	100–150	2	60	24	0.94 ± 0.03
CA-1	Q	SAR	200–250	SG	50	27	0.97 ± 0.02
CA-1	FS	pIRIR ₂₂₅	100–150	1	87	3	0.96 ± 0.07^a
CA-1	FS	pIRIR ₂₂₅	100–150	1	87	3	0.99 ± 0.01^b
CA-1	FS	pIRIR ₂₉₀	100–150	1	117	3	1.09 ± 0.03^a
CA-1	FS	pIRIR ₂₉₀	100–150	1	117	3	1.10 ± 0.03^b
CA-9	Q	SAR	100–150	1	60	17	1.04 ± 0.02
CA-10	Q	SAR	40–63	1	60	20	0.99 ± 0.01

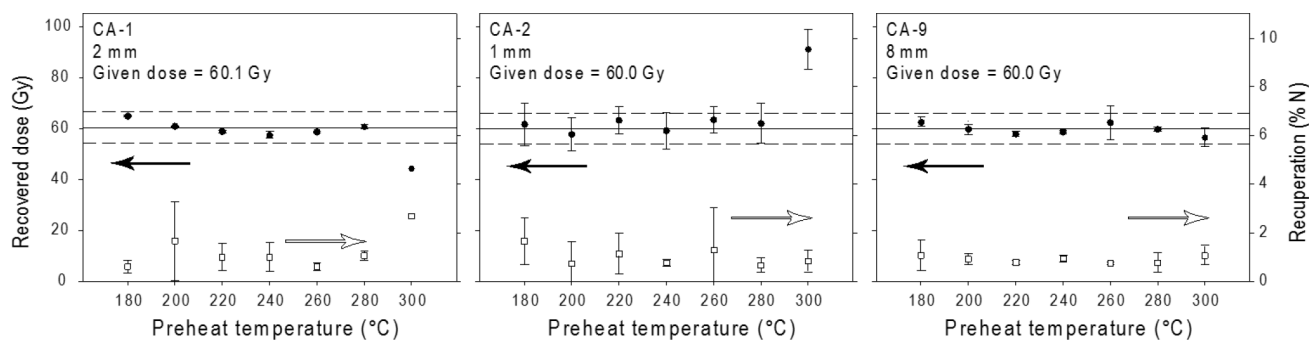


Fig. 5. Dependency of D_e on preheat temperature deduced from “dose recovery preheat plateau” tests for samples CA-1, CA-2 and CA-9. Filled circles indicate the mean D_e of three or four aliquots measured for each preheat temperature. The error bars are the standard error of dose estimates obtained for each temperature. Open squares are the mean recuperation rates. Solid line represents the given laboratory dose; dashed lines represent 10% uncertainty. For all three samples the laboratory dose of ~60 Gy could be recovered within 10% of unity for preheat temperatures from 180°C to 280°C. In all cases the mean recuperation rate remained below 5% of the natural signal.

Estimating the amount of grains on a sample disc

Multiple grain D_c estimation techniques are known to be prone to averaging effects (e.g. Duller, 2008 and Arnold and Roberts, 2009) and there is an increasing number of single grain studies where aberrant grain behaviour was found to be the cause for D_c over- and underestimations on the multiple grain scale (e.g. Arnold *et al.*, 2012; Stone and Bailey, 2012 and Demuro *et al.*, 2008, 2013). However, when dealing with averaging effects in multiple grain measurements there is the obvious question on how many grains are actually present on an aliquot that potentially contribute to the measured OSL signal. Here, we adopted the approach of Heer *et al.* (2012), who presented empirical data on this issue, and estimated the number of grains n on an aliquot by assuming a two-dimensional ‘Packing Equal Circles in a Circle’ (PECC) problem (cf. Huang and Ye, 2011) and using the following equation

$$n = \frac{\pi r_c^2}{\pi r_g^2} d \quad (4.1)$$

where r_c is the radius of the aliquot (mm), r_g is the mean radius of the grain size fraction (mm) and d is the packing density (value between 0 and 1). Instead of assuming $d = \pi/\sqrt{12} \approx 0.907$ (e.g. Rhodes, 2007 and Heer *et al.*, 2012), a value that can only be achieved in a densest circle packing on an infinite plane (Chang and Wang 2010), packing density values were taken from Specht (2012). Here, packing density values vary between 0.656 and 0.875 for n up to 1500 (omitting values for $n = 1$ and 2). In addition, multiple grain aliquots in 1, 2 and 8 mm diameter were prepared as described in Heer *et al.* (2012) and photographed with a digital Keyence VHX-2000 microscope in order to count the number of grains on the disc. The results are shown in Table 4.

Table 4. Results of counting grains on single aliquot discs. Values for maximum packing density d were taken from Specht (2012). A mean packing density of 0.68 was calculated, which is significantly lower than the commonly assumed packing density of ~ 0.907 , a value that can only be achieved in the densest hexagonal circle packing on an infinite plane (Chang and Wang, 2010).

Grain size (μm)	Aliquot diameter (mm)	Maximum packing density d	Calculated maximum number of grains	Number of counted aliquots	Counted average number of grains	Standard deviation	Packing density d
40–63	1	0.85	320	3	387	10	1.03
40–63	2	0.86	1304	3	807	62	0.54
100–150	1	0.78	55	6	34	14	0.53
100–150	2	0.83	221	6	180	36	0.70
100–200	1	0.78	35	1	31	-	0.70
100–200	2	0.82	146	1	101	-	0.57

It is evident that there is a substantial discrepancy between the theoretical and actual number of grains on an aliquot, even when assuming maximum packing densities in a PECC problem. In addition to the possible reasons given by Heer *et al.* (2012) it has to be considered that preparing the aliquot by sprinkling the grains on the disc is a highly random process. Thus, the probability of arranging the grains in the densest possible configuration on the disc can be considered zero. One exception to this observation is the calculated packing density of 40–64 μm grains on 1 mm aliquots. Possible reasons for a packing density $d \geq 1$ are: a) the desired aliquot diameter is in reality larger than 1 mm (e.g. due to imprecise disc preparation), b) the grains are not arranged in a commonly assumed mono-layer, or c) a combination of both.

Aggregating the results of Heer *et al.* (2012) and of Table 4 a mean empirical packing density value of $d = 0.65$ is proposed. Using this value and assuming a mean grain size of 125 μm it was estimated that 1, 2 and 8 mm aliquots contain 42, 166 and 2662 grains, respectively (see Fig. S3 in the Appendix).

Proportion of grains emitting luminescence

The brightness distribution of quartz from Cueva Antón was investigated by constructing a cumulative light sum curve (Duller *et al.*, 2000) for the natural signal (L_n) of samples CA-1 and CA-5 (Fig. 6). However, variations in grain-to-grain brightness of the natural signal can be the result of external sources of variation such as partial bleaching or beta dose heterogeneity. Therefore, a second plot was done for the natural test dose signal (T_n), where the ratio of bright to dim grains ought to be the result of inherent quartz grain characteristics. In addition, the signal intensity distribution of two quartz samples used for beta source calibration (RisoeQ and BAG478) was analysed in the same way. As both samples were thermally sensitised and homogeneously dosed to 4.81 Gy and 8.03 Gy, respectively, in a uniform ^{60}Co γ -radiation field prior to this study, a smaller variation in signal intensity was expected.

The cumulative light sum curves revealed that 95% of the total natural signal intensity is emitted by 7.4% and 9.2% of the total grain population for samples CA-1 and CA-5, respectively. In combination with the estimated amount of grains on a sample disc it is estimated that the natural signal from 1, 2 and 8 mm aliquots is mainly derived from 3, 13 and 213 grains in average. Furthermore, for a typical 1 mm aliquot used in this study containing 40–45 grains about 80% of the signal is likely to come from a single grain. After applying the test dose the proportions of light emitting grains increase to 13.6% and 14.3%. As expected, the signal intensity distributions of the calibration quartz samples were more uniform. About 26.4% (RisoeQ) and 50.9% (BAG478) of the grains emit 95% of the bulk OSL signal.

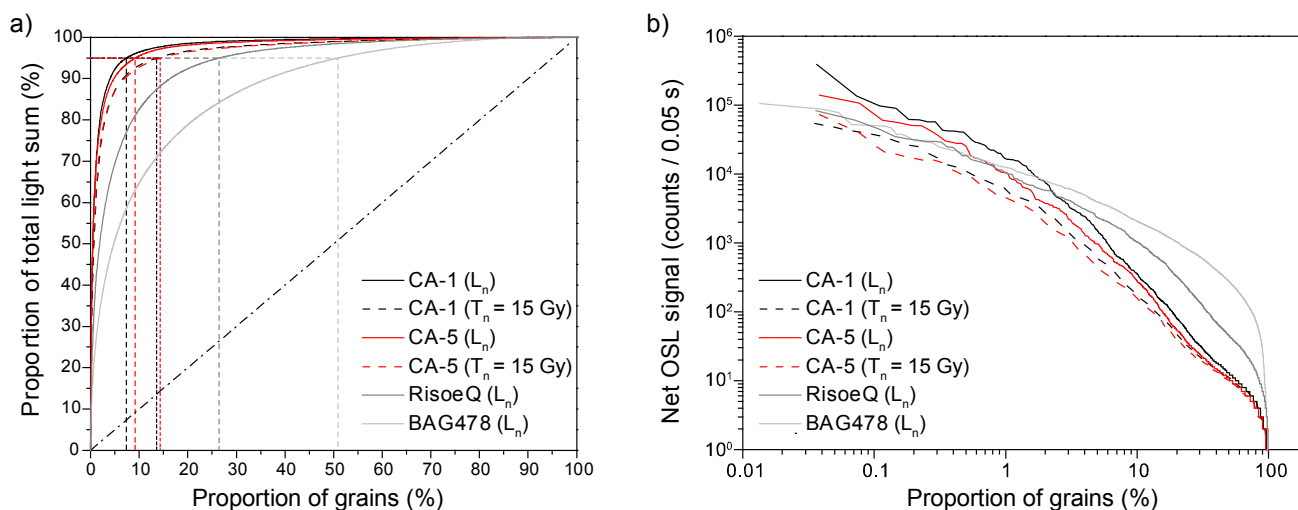


Fig. 6. Proportion of grains emitting luminescence, visualised as a) a cumulative light sum curve after Duller *et al.* (2000), and as b) the absolute brightness distribution of the natural signal L_n and after the natural test dose T_n of 15 Gy. The dashed line represents a population of grains with all grains having the same brightness. The cumulative light sum curves revealed that 95% of the total natural signal intensity is emitted by 7.4% and 9.2% of the total grain population for samples CA-1 and CA-5, respectively. A typical 1 mm aliquot used in this study that contains 40–45 grains about 80% of the signal is likely to come from a single grain. After applying the test dose proportion of light emitting grains increase to 13.6% and 14.3%.

Presence of over-saturating grains

The same single grain data sets used to investigate the brightness distribution were systematically surveyed for “over-saturating” (‘o-s’) grains (Stone and Bailey, 2012), *i.e.* grains with a natural signal L_n/T_n which does not intercept the dose response curve (Yoshida *et al.*, 2000 and Jacobs *et al.*, 2003). This kind of behaviour has been predicted in the dose absorption model of Bailey (2004) as a result of the difference in dose rates between natural and laboratory irradiation with regard to the R_1 hole-trapping centre. During natural irradiation the relatively thermally unstable R_1 centre ($E = 1.43$ eV) is in a state of low equilibrium concentration, but in a considerably higher equilibrium concentration during laboratory irradiation. During the latter, the resulting increased competition for free electrons during irradiation effectively lowers the dose response curve so that the natural dose point, unaffected by the laboratory dose rate, can be above the fitted asymptotic signal level (Bailey, 2004).

The asymptotic regeneration value was established for those grains for which a meaningful exponential growth curve could be fitted. To identify and distinguish ‘o-s’ grains from those grains whose natural signal is above the dose response curve due to random counting errors, the natural signal had to be at least two standard deviations above the asymptotic regeneration value.

Proportion and brightness of over-saturating grains

Out of the 2728 grains measured in total of sample CA-1 only 20 grains (0.73%) have shown a similar behaviour attributed to ‘o-s’ grains. A further 10 grains (0.37%) were close to saturation, but had an L_n/T_n value

that still intercepted the dose response curve in the saturation area above $2D_0$ and hence were not classified as ‘o-s’ grains. For sample CA-5 only 15 grains ($n = 2598$) were identified as ‘o-s’ grains (0.58%). A comparable amount of grains ($n = 16$) had an L_n/T_n value that intercepted the dose response curve above $2D_0$ (0.62%). Dividing the sum of net OSL intensities of all ‘o-s’ grains in a sample by the total light sum revealed that the ‘o-s’ grains are responsible for 32% (CA-1) and 11% (CA-5) of the total emitted OSL signal. While on the single grain scale ‘o-s’ grains can easily be identified and discarded from further analysis, for multiple grain aliquots the presence of ‘o-s’ grains is expected to lead to an overestimation of the D_e due to their disproportional contribution to the natural signal compared to the regenerated signals (Yoshida *et al.*, 2000). However, the impact of ‘o-s’ grains on multiple grain D_e estimates depends on the probability of inclusion, the degree of over-saturation and the relative brightness (Stone and Bailey, 2012). While the contribution of all ‘o-s’ grains to the total light sum appears large, the ‘o-s’ grain OSL intensities were found to vary in orders of magnitude. While the brightest ‘o-s’ grain of sample of CA-1 had a net OSL signal of ~ 400000 counts in the first 0.05 s of stimulation, the dimmest ‘o-s’ grain only had ~ 400 counts. Hence, it appears that the contribution of ‘o-s’ grains to the total light sum is not evenly shared by all ‘o-s’ grains, but rather dominated by a smaller fraction of disproportional bright grains.

While less than 0.8% of all measured grains were identified as ‘o-s’ grains and despite the low probability of an ‘o-s’ grain on a small aliquot ($<20\%$) when assuming a binomial distribution, the influence of ‘o-s’ grains on D_e estimates may very well increase for larger ali-

quots. For a 1 mm aliquot covered by 40–63 μm grains (CA-10) there is only a 18% probability that none of the 240 grains is an ‘o-s’ grain. In contrast, there is a probability of 31% of one ‘o-s’ grain, 26% of two ‘o-s’ grains and 14% of three ‘o-s’ grains to be present on the aliquot. For CA-1 virtually all large 8 mm aliquots (2662 grains per disc) contain at least five ‘o-s’ grains.

The effect of over-saturating grains on synthetic aliquot D_e

To further investigate the effect of ‘o-s’ grains on multiple grain D_e estimates synthetic aliquots were constructed by summing up the signals of all grains of a single grain disc where ‘o-s’ grains were identified. For sample CA-1 13 synthetic aliquots were constructed where each disc contained one ‘o-s’ grain. The relative contribution of the ‘o-s’ grain to the total light sum of each synthetic aliquot varied between 1 to 55%, while the proportion of grains emitting 95% of the total light sum ranged from 6 to 28% with an average of $12.2 \pm 7.3\%$. For three of the synthetic aliquots the ‘o-s’ grains were bright enough to dominate the dose response, so that no D_e could be calculated. Similar values were determined for the synthetic aliquots of sample CA-5 ($n = 7$), where the relative contribution of ‘o-s’ grains ranged from 3 to 64% and the proportion of grains emitting 95% of the total light sum varied from 3–20% with an average of $10.0 \pm 5.7\%$. The obtained D_e values from the multiple grain synthetic aliquots were then compared to the D_e that was obtained when excluding the ‘o-s’ grains (Fig. 7). Exclusion of these grains revealed that the presence of ‘o-s’ on a multiple grain aliquot directly effects the calculated D_e value. After removal of the ‘o-s’ grains from the synthetic aliquot the maximum observed decrease in D_e was ~66%. It further appears that for the samples under study the relative decrease in D_e is linearly proportional to the relative contribution of the ‘o-s’ grain to the total light sum (Fig. 7). Another observation is that almost half of the identified ‘o-s’ grains only amount for less than 12% of the total light sum and hence lead to a decrease in D_e of similar proportion after removal from the synthetic aliquot. Most of the remaining ‘o-s’ grains lead to a decrease in D_e of 10–25% after removal, while two distinct outliers more than halved the D_e of the synthetic aliquot due to their high contribution to the total light sum of about 65%. As a consequence, the presence or absence of ‘o-s’ grains has to be considered as an additional source of intrinsic scatter between multiple grain aliquots when explaining the observed scatter in D_e distributions of the samples under study.

5. DISCUSSION

Dose distributions

The observed dispersion in natural dose distributions is a composite of intrinsic and extrinsic sources of error. The former arises e.g. from variations in photon counting

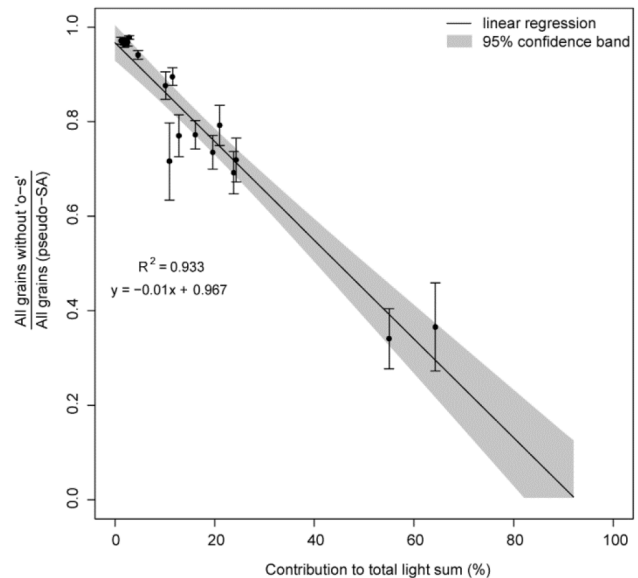


Fig. 7. Effect of over-saturating (‘o-s’) grains on the D_e of synthetic multiple grain aliquots. For each of the single grain discs where an ‘o-s’ grain was identified the single grain signals of all grain hole positions were summed up and a D_e value was calculated before and after excluding the ‘o-s’ grain from the synthetic aliquot. The decrease in D_e , expressed as the ratio of the D_e without the ‘o-s’ grain and the D_e including all grains, is plotted against the contribution of the ‘o-s’ grain to the total light sum of the synthetic aliquot. An apparently linear proportionality between light sum contribution and decrease in D_e was observed for the samples under study.

statistics and curve-fitting uncertainties (Galbraith and Roberts, 2012). In the absence of any extrinsic factors such as partial bleaching, post-depositional sediment mixing or variations in beta microdosimetry, and when all intrinsic sources of uncertainty have been determined and properly accounted for, no spread in dose distributions should be observed. However, it is common that even in dose recovery experiments, where any extrinsic sources of scatter that affect natural samples are effectively excluded, and after taking all intrinsic errors into account, a substantial spread in D_e values remains (Galbraith *et al.*, 2005).

To assess whether the assigned uncertainties on the individual D_e estimates are sufficient to explain the observed variability we calculated the overdispersion using the central age model. For the quartz samples OD values ranged from 11% to 33%. The general assumption of less variation in D_e with an increasing number of simultaneously measured grains (Duller, 2008 and Arnold and Roberts, 2009) also applied to this study (Fig. S4 in the Appendix). Single grain D_e distributions exhibit the highest mean OD (29%), which continuously decreases for multi grain aliquots with increasing number of simultaneously measured grains. The decrease in OD approximately follows the prediction of Cunningham *et al.* (2011). However, in terms of absolute values, the observed OD in single grain and multiple grain D_e distribu-

tions is higher than those summarised in Arnold and Roberts (2009). In any case, the calculated OD values hence indicate that the observed spread in dose distributions cannot be explained by intrinsic uncertainties alone. This may either be due to the fact that the intrinsic variability has been underestimated or that additional intrinsic and extrinsic sources of scatter have to be considered.

Extrinsic sources of uncertainty

Samples analysed in this study are known to be of fluvial origin (Angelucci *et al.*, 2013), hence partial bleaching might affect the D_e distributions to some extent. However, LM-OSL measurements have shown a clear dominance of the fast component and routine assessment of $D_e(t)$ plots (Bailey, 2003) constructed for samples CA-1, CA-2 and CA-6 on different aliquot sizes and single quartz grains provide no evidence for a significant dependence of D_e on the integration interval over the initial part of the signal. Contamination of the integrated OSL signal used for D_e determination by a partially bleached medium component is hence regarded unlikely. Another method for identifying partial bleaching of quartz from samples CA-1 and CA-5 was applied by measuring the much harder-to-bleach pIRIR signals of feldspars (Thomsen *et al.*, 2008b and Buylaert *et al.*, 2012; see Fig. S5 in the Appendix). As dose rates to quartz and feldspar and hence the D_e differ due to the internal K-content of feldspar we calculated the age of these samples in order to compare the OSL and pIRIR results. Prior to that residual doses of 3.7 Gy and 11.4 Gy, determined on the modern sample CA-7, were subtracted from the pIRIR₂₂₅ and pIRIR₂₉₀ equivalent dose,

respectively. Applying the homogeneity test after Galbraith (2003) indicates that the pIRIR₂₉₀ age (74.1 ± 7.9 ka) for sample CA-1 almost perfectly agrees ($P = 0.96$) with the quartz OSL ages (70.9 ± 7.6 ka and 74.1 ± 7.9 ka). However, the pIRIR₂₂₅ age (54.5 ± 4.9 ka) seems to underestimate the burial age ($P = 0.06$). For sample CA-5 the pIRIR₂₂₅ age (83.7 ± 8.9 ka) is slightly larger than the quartz OSL age estimates (69.9 ± 7.6 ka and 68.7 ± 6.8 ka), but all age estimates still agree with each other ($P = 0.36$). The pIRIR₂₉₀ signal is regarded to yield the more reliable age estimate due to its higher stability over the pIRIR₂₂₅ signal (Thiel *et al.*, 2011; Thomsen *et al.*, 2011 and Buylaert *et al.*, 2012). Note that no additional tests to correct for anomalous fading (e.g. Huntley and Lamothe, 2001; Auclair *et al.*, 2003 and Kars *et al.*, 2008) were conducted as fading correction methods are problematic (e.g. Wallinga *et al.*, 2007 and Reimann *et al.*, 2011). However, since the quartz OSL age estimates from single grains and small aliquots perfectly agree with the age derived from the much harder-to-bleach pIRIR₂₉₀ signal, this gives strong support to a well-bleached quartz OSL signal. This confirms the assumption that partial bleaching is not necessarily an impediment to obtaining accurate chronologies for Late Pleistocene alluvial samples (Jain *et al.*, 2004; Martins *et al.*, 2010; Sohbati *et al.*, 2012 and Medialdea *et al.*, 2014).

Another source of extrinsic variability might arise from post-depositional sediment mixing that is often associated with archaeological deposits (cf. Jacobs and Roberts, 2007). However, the single grain D_e distributions from sample CA-1 and CA-5 provide no evidence for distinct dose components that might be related to the intrusion of younger or older grains (Fig. 8). The lack of

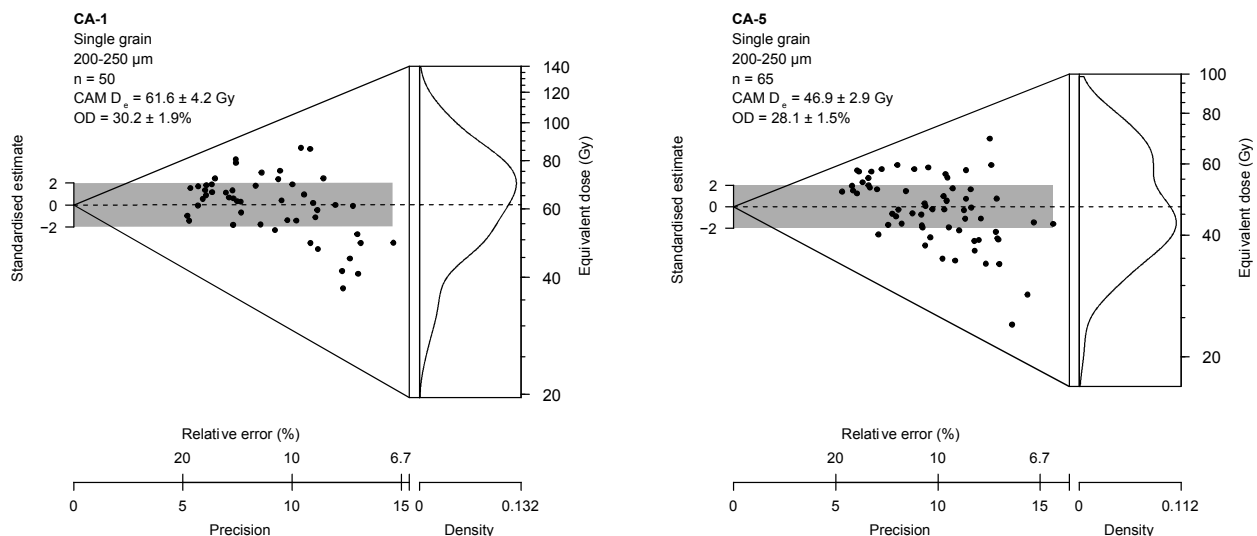


Fig. 8. Single grain D_e distributions of samples CA-1 and CA-5 visualised in a combined radial plot (Galbraith, 1988) and kernel density estimate (KDE) plot, generated with the `plot_AbanicoPlot()` function of the R package 'Luminescence' (Kreutzer *et al.*, 2012). The grey bar in the radial plot is centred on the weighted D_e calculated by the central age model (CAM, Galbraith *et al.*, 1999). The calculated overdispersion values indicate that the observed spread in the dose distributions cannot be explained by intrinsic uncertainties alone.

post-depositional modifications at Cueva Antón is also confirmed by Angelucci *et al.* (2013). The use of a finite mixture model (Galbraith and Green, 1990 and Roberts *et al.*, 2000) was hence considered to be inappropriate.

The observed spread in the dose distributions may also partly be explained by small-scale variations in the beta radiation dose to which the samples have been exposed during burial (Olley *et al.*, 1997 and Duller, 2008). Modelling studies (e.g. Nathan *et al.*, 2003) have shown that beta heterogeneity may significantly influence D_e distributions. However, there is no straightforward method to identify beta dose heterogeneities and their impact on dose estimates (cf. Guérin *et al.*, 2013). At this stage we cannot assess whether the observed overdispersion can at least partly be explained by microdosimetry or not. Considering that our samples were probably not affected by partial bleaching, the CAM may yield the most appropriate burial dose estimate if beta dose heterogeneity is probable (Guérin *et al.*, 2013).

Intrinsic sources of uncertainty

While extrinsic sources of error potentially account for some of the observed scatter, further intrinsic factors may have not been accounted for yet. While low OSL intensity of quartz (cf. Duller, 2006; Preusser *et al.*, 2006 and Klasen *et al.*, 2007) as a source of additional scatter to D_e distributions can be excluded due to the bright signals, it was shown that even for heated and homogeneously irradiated quartz an OD of 8–12% remained in single grain D_e datasets after correcting for the spatial non-uniformity of the beta sources. This additional intrinsic uncertainty is comparable to values reported earlier by Thomsen *et al.* (2005, 2007) and Reimann *et al.* (2012b). However, unlike Thomsen *et al.* (2007) and Reimann *et al.* (2012b) we did not add this uncertainty onto the uncertainties of the single grain D_e estimates because this value was derived from a gamma dose recovery experiment for calibrating the beta sources on calibration samples of different provenance.

Beyond that, recent single grain studies have demonstrated that different ‘grain behavioural types’ with regard to luminescence properties such as brightness and dose-response characteristics can have a significant impact on both single and multiple grain dose distributions and have to be considered as additional sources of intrinsic scatter (e.g. Yoshida *et al.*, 2000; Duller, 2012; Stone and Bailey, 2012 and Demuro *et al.*, 2008, 2013). By single grain measurements the variability of the saturation dose D_0 and the presence of ‘over-saturating’ was investigated. The former has been reported to affect the ability to successfully recover a laboratory dose in a dose recovery experiment as the given dose approaches or exceeds the saturation dose (Duller, 2012). A mean D_0 of ~63 Gy was determined for quartz from Cueva Antón, which falls within the range of saturation doses of quartz reported in Wintle and Murray (2006). Despite the large variability of D_0 values similar to the values reported by Duller

(2012) all conducted dose recovery experiments on single grains and multiple grain aliquots performed well (Table 3). Hence, the observed variability in D_0 values is not expected problematic for the samples from Cueva Antón.

Following the suggestion of Stone and Bailey (2012) the single grain data sets were monitored for the presence of ‘o-s’ grains. By making synthetic aliquots consisting of 100 grains each it was assessed that most ‘o-s’ grains only have a minor influence on the calculated D_e . However, some ‘o-s’ grains more than doubled the D_e or were even so bright to saturate the synthetic aliquot so that no D_e could be calculated. While ‘o-s’ grains are easily rejected from single grain data sets, there is no formal indication whether a multiple grain aliquot and its D_e that otherwise passes all rejection criteria is affected by the presence of one or more ‘o-s’ grains. Hence, for multiple grain aliquots systematically higher D_e and age estimates should be expected (Stone and Bailey, 2012). However, statistically indistinguishable single grain and small aliquot CAM D_e estimates of 61.6 ± 4.2 Gy and 61.5 ± 3.4 Gy for CA-1 and 46.9 ± 2.9 Gy and 48.9 ± 2.8 Gy for CA-5, respectively, were obtained. It is only for the 8 mm aliquots of CA-1 that a significantly higher mean D_e 74.7 ± 4.3 Gy was calculated. A similar behaviour was observed for sample CA-10, where 1 mm aliquots covered with 100–150 μm quartz grains yielded a D_e of 44.4 ± 2.7 Gy, but where the same aliquot size covered with 40–63 μm quartz grains yielded a considerably higher D_e of 62.4 ± 3.6 Gy. Assuming that the D_e increase can indeed be attributed to the presence of ‘o-s’ grains, they would be responsible for an increase of about 12–18 Gy. Considering that single grain and small aliquot D_e distributions of CA-1 and CA-5 yield indistinguishable mean D_e estimates it appears that the presence of ‘o-s’ grains only has a relevant impact for larger aliquots (cf. Stone and Bailey, 2012).

While it is not possible to definitely state the causes for the observed spread in data and the D_e and age overestimation of larger multiple grain aliquots, the single grain and synthetic aliquot analyses indicate that multiple grain averaging effects are a complex system of various (aberrant) OSL signal characteristics. Here, these problematic averaging effects seem to become noticeable when the number of simultaneously measured grains exceeds a certain threshold value. Small aliquot D_e estimates are seemingly not affected by the presence of ‘o-s’ grains, which might be the result of a low probability of having an ‘o-s’ grain and an overall low percentage of bright grains that contribute to the total light sum. When a small aliquot contains one or more very bright ‘o-s’ grains, which have been shown to have the highest impact on the D_e about equal to their share of the total light sum, there is a higher probability that the ‘o-s’ grain even saturates the small aliquot with only a few other grains. As a result, the small aliquot would not pass the rejection criteria. But as the amount of simultaneously measured grains increases, it is less likely that the ‘o-s’ grains is

able to saturate the multiple grain aliquot. Depending on its relative contribution to the multiple grain OSL signal the ‘o-s’ may then lead to a systematic overestimation of the equivalent dose.

Palaeodose and age estimates

Concluding the previous sections we consider the CAM as the most appropriate age model to calculate an equivalent dose representative for the ‘true’ burial age of the samples from Cueva Antón. Furthermore, only the quartz single grain and small aliquot (1 mm and 2 mm with 100–150/200 μm grains) data sets are considered to yield reliable age estimates, as larger aliquots are supposedly affected by a systematic overestimation of the D_e due to the presence and influence of over-saturating grains. CAM D_e estimates obtained from these data sets show only little variation on a sample-to-sample basis and no obvious correlation with sample depth or stratigraphic order. The CAM D_e values range from 44 Gy to 75 Gy and yield luminescence ages between 69 ka and 82 ka. Results of equivalent dose determination and age calculation are summarised in **Table 5**.

Archaeological and sedimentological implications

A coherent quartz OSL-based chronostratigraphy for the archaeological succession (AS2–AS5) at Cueva Antón is provided (**Fig. 9**). Due to the highly significant agreement of age estimates ($P = 0.95$), an error weighted mean and associated standard deviation of 71.0 ± 1.8 ka is suggested for unit II-e. Likewise, weighted mean ages of 69.2 ± 0.9 ka ($P = 0.91$) and 72.1 ± 5.8 ka ($P = 0.42$) for unit III-f and III-m are suggested, respectively. Taking all age estimates into account, the high agreement of age estimates ($P = 0.99$) reduces to an error weighted mean of 72.0 ± 4.2 ka for sub-complexes AS2 to AS5.

The age estimates for unit II-e (~71 ka) at the top of AS2 clearly contradicts the ABA radiocarbon age of 39.7 ± 0.6 ka BP (~43.5 ka cal BP, OxA-18672; Zilhão *et al.*, 2010) obtained from the underlying unit II-h/i. How-

ever, the radiocarbon date is regarded as a preliminary minimum age estimate for unit II-h/i (Zilhão *et al.*, 2010).

The very low variation in quartz OSL age estimates throughout the entire archaeological succession suggests a fairly rapid fluvial accumulation of the sediments, which is in very good accord with the sedimentological and micromorphological findings of Angelucci *et al.* (2013). However, given that all age estimates are statistically indistinguishable it is neither possible to discern individual flood events nor to constrain the involved time span.

Furthermore, the suggested time frame for the deposition of the middle to lower part of the alluvial succession also implies a major hiatus between sub-complexes AS2 and AS1, which are separated by an erosional cut. However, the interpretation of such a large hiatus in the sedimentary record remains open and requires additional investigation.

6. CONCLUSIONS

The aim of this study was to establish a reliable chronostratigraphy for the archaeological succession from sub-complexes AS2 to AS5 of Cueva Antón. For that purpose, the most reliable luminescence dating technique for estimating the age of fluvial deposits in a rock shelter was ascertained through a series of laboratory experiments and by cross-validating the performance of the dating methods used.

From a methodological perspective the following conclusions can be drawn: i) The multiple grain approach utilising quartz grains on small (preferably 1 mm) aliquots is a viable method to determine the burial age of fluvial deposits in rock shelters that are unaffected by post-depositional mixing. ii) While the same results on the interpretation of the succession at Cueva Antón would have been achieved if exclusively small aliquots were used, single grain measurements of quartz provided valuable information for the analysis of D_e distributions. Statistically indistinguishable D_e and age estimates from

Table 5. Results of equivalent dose determination and age calculation. Q = quartz.

Unit	Lab. Code	Sample	Mineral	Aliquot diameter (mm)	Grain size fraction (μm)	Nr of aliquots/grains accepted/measured	Age model	Over-dispersion (%)	Equivalent dose (Gy)	Total dose rate (Gy ka ⁻¹)	Luminescence age (ka)
II-e	C-L2941	CA-1	Q	2	100–150	42/50	CAM	15.3±0.7	61.5±3.4	0.87±0.10	70.9±7.6
				SG	200–250	50/3100	CAM	30.2±1.9	61.6±4.2	0.84±0.11	72.9±7.7
II-e	C-L3137	CA-2	Q	1	100–150	51/60	CAM	29.3±1.6	66.9±4.4	0.97±0.12	69.3±7.7
II-ø	C-L3375	CA-9	Q	1	100–150	46/58	CAM	22.6±1.2	55.0±3.3	0.67±0.08	82.2±8.0
II-y	C-L2942	CA-4	Q	2	100–200	41/48	CAM	17.0±0.8	75.1±4.3	1.08±0.13	69.4±7.2
III-f	C-L2943	CA-5	Q	2	100–200	45/48	CAM	17.9±0.8	48.9±2.8	0.70±0.09	69.9±7.6
				SG	200–250	65/2800	CAM	28.1±1.5	46.9±2.9	0.68±0.08	68.7±6.8
				Q	100–150	46/62	CAM	23.5±1.3	44.4±2.7	0.62±0.08	72.2±7.8
III-k/IC	L3377	CA-11	Q	1	100–150	60/84	CAM	27.1±1.3	49.0±3.0	0.66±0.08	74.1±7.9
III-m	C-L3138	CA-6	Q	1	100–150	66/84	CAM	32.7±1.7	66.9±4.3	0.86±0.12	77.5±9.8
III-m	C-L3378	CA-12	Q	1	100–150	45/70	CAM	25.0±1.4	58.4±3.7	0.85±0.10	69.1±7.3

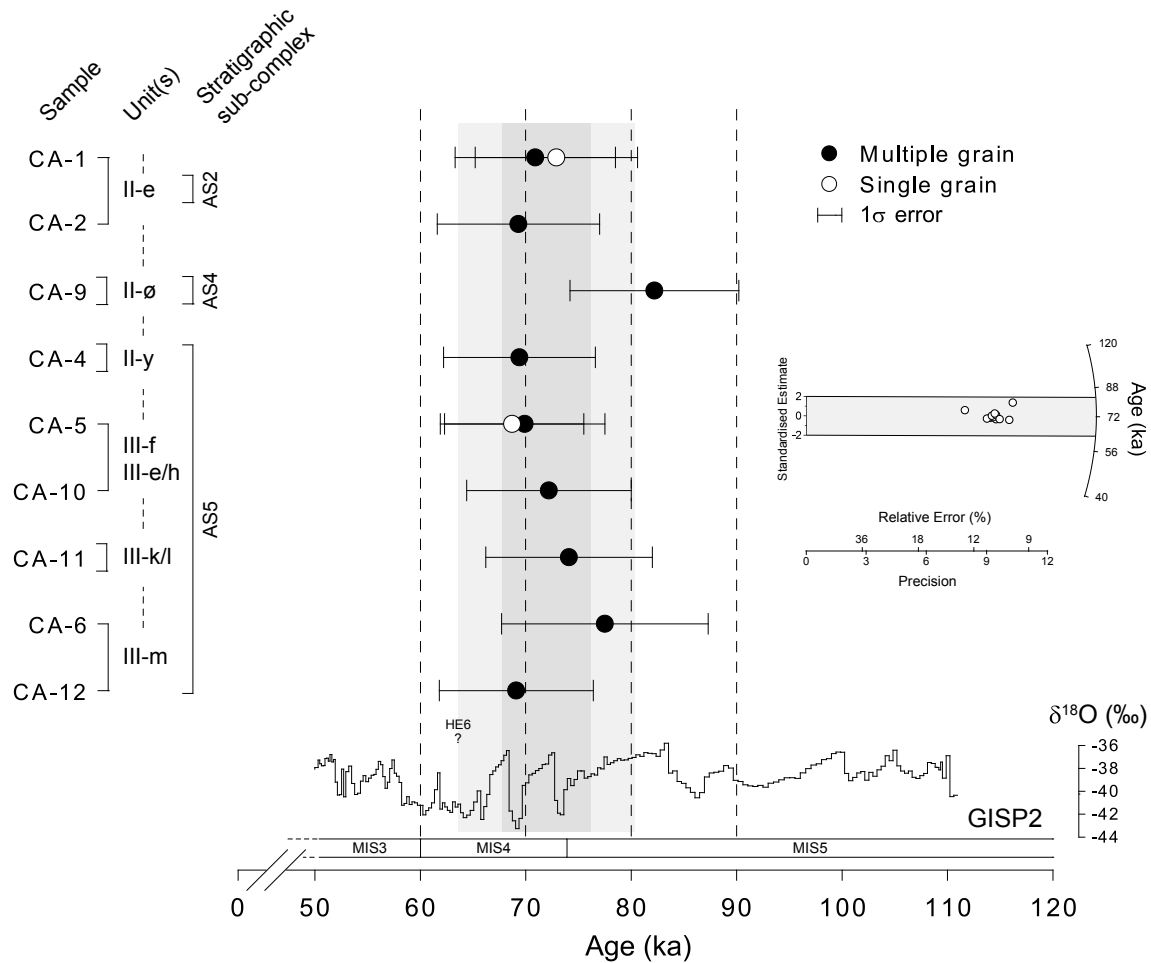


Fig. 9. OSL chronostratigraphy for the archaeological succession (AS2-AS5) at Cueva Antón using multiple and single grains of quartz. GISP2 oxygen isotope curve from Grootes *et al.* (1993) with timescale of Meese *et al.* (1997). Approximate timing of Heinrich Event 6 (HE 6) taken from Hemming (2004) (see also Cayre *et al.*, 1999 and references therein). Dashed lines on y-axis denote unlisted archaeological units (see Angelucci *et al.*, 2013 for a comprehensive list). Grey bars on x-axis are the standard deviation (dark) and twice the standard deviation (light) on the error weighted mean of all age estimates. Inset: Radial plot (Galbraith, 1988) of quartz OSL age estimates. The reference value is the error weighted mean of age estimates. The grey bar denotes the 2σ (95% confidence interval) band on the reference value.

single grains and small aliquots give strong support for the potential of small aliquot measurements for studies in comparable contexts. Furthermore, single grain measurements allowed the detection of aberrant grain behaviour and by constructing synthetic aliquots their impact on multiple grain D_e estimates could be quantified. iii) The presence of ‘over-saturating’ grains, *i.e.* grains whose natural signal is significantly above the dose response curve, affected multiple grain D_e estimates and can lead to a systematic overestimation of the D_e as the number of simultaneously measured grains increases. Besides the probability of having an ‘o-s’ grain on the aliquot, the degree of overestimation appears to be primarily controlled by the relative contribution of the ‘o-s’ grain to the total light sum of a multiple grain aliquot. iv)

The comparison of different luminescence dating techniques utilising different minerals and luminescence signals with varying bleaching rates is a powerful tool to identify partial bleaching and to strengthen the reliability of the obtained chronologies (cf. Murray *et al.*, 2012).

Finally, the results of the present study are a valuable contribution to the chronological framework and interpretation of the Middle to Upper Palaeolithic transition in the Iberian Peninsula. The quartz OSL chronology for the middle to lower parts of the fluvial succession at Cueva Antón suggests a fairly rapid deposition of the sediments during late MIS 5 and possibly throughout MIS 4. Consequently, Mousterian occupations of the rock shelter primarily documented in the lower parts of the succession fall within that particular time frame.

APPENDIX

Five figures are available as Supplementary Material in electronic version of this article at <http://dx.doi.org/10.1515/geochr-2015-0010>. Fig. S1: 3D Plots of beta source dose rate distributions from three Risø TL/OSL readers; Fig. S2: Deconvolved LM-OSL curves from samples CA-1 and CA-6; Fig. S3: Number of mineral grains on a sample disc as a function of the aliquot diameter, mean grain size and packing density; Fig. S4: Dependency of overdispersion on the amount of grains on a sample disc; Fig. S5: Bleaching rates of the pIRIR₂₂₅ and pIRIR₂₉₀ signals from sample CA-1.

ACKNOWLEDGEMENTS

Archaeological fieldwork and research at Cueva Antón were funded, over the years, by the Fundación Séneca (Murcia), the University of Murcia, the Spanish Ministerio de Ciencia e Innovación (grant HAR2011-24878), the Leakey Foundation, the Dirección General del Medio Natural de la Región de Murcia and the Municipality of Mula, and actively supported by the Museo de Arte Ibérico El Cigarralejo de Mula. We are grateful for the financial support by the C1 and F2 projects of the CRC 806 “Our Way To Europe. Culture-Environment Interaction and Human Mobility in the Late Quaternary”, funded by the German Research Foundation (DFG). Melanie Bartz is thanked for providing additional data on the amount of grains on a sample disc.

REFERENCES

- Aitken MJ, 1985. Thermoluminescence Dating. Academic Press, London.
- Angelucci DE, Anesin D, Susini D, Villaverde V, Zapata J and Zilhão J, 2013. Formation processes at a high resolution Middle Paleolithic site: Cueva Antón (Murcia, Spain). *Quaternary International* 315: 24–41, DOI 10.1016/j.quaint.2013.03.014.
- Arnold LJ and Roberts RG, 2009. Stochastic modelling of multi-grain equivalent dose (D_e) distributions: Implications for OSL dating of sediment mixtures. *Quaternary Geochronology* 4: 204–230, DOI 10.1016/j.quageo.2008.12.001.
- Arnold LJ, Demuro M and Navazo Ruiz M, 2012. Empirical insights into multi-grain averaging effects from ‘pseudo’ single-grain OSL measurements. *Radiation Measurements* 47: 652–658, DOI 10.1016/j.radmeas.2012.02.005.
- Auclair M, Lamothe M and Hout S, 2003. Measurement of anomalous fading for feldspar IRSL using SAR. *Radiation Measurements* 37: 487–492, DOI 10.1016/S1350-4487(03)00018-0.
- Bailey RM, 2003. Paper I: The use of measurement-time dependent single-aliquot equivalent-dose estimates from quartz in the identification of incomplete signal resetting. *Radiation Measurements* 37: 673–683, DOI 10.1016/S1350-4487(03)00078-7.
- Bailey RM, 2004. Paper I – simulation of dose absorption in quartz over geological timescales and its implications for the precision and accuracy of optical dating. *Radiation Measurements* 38: 299–310, DOI 10.1016/j.radmeas.2003.09.005.
- Ballarini M, Wintle AG and Wallinga J, 2006. Spatial variation of dose rate from beta sources as measured using single grains. *Ancient TL* 24(1): 1–8.
- Bøtter-Jensen L, 1997. Luminescence techniques: instrumentation and methods. *Radiation Measurements* 27(5/6): 749–768, DOI 10.1016/S1350-4487(97)00206-0.
- Bøtter-Jensen L, Duller GAT, Murray AS and Banerjee D, 1999. Blue light emitting diodes for optical stimulation of quartz in retrospective dosimetry and dating. *Radiation Protection Dosimetry* 84: 335–340.
- Bøtter-Jensen L, Bulur E, Duller GAT and Murray AS, 2000. Advances in luminescence instrument systems. *Radiation Measurements* 32: 523–528, DOI 10.1016/S1350-4487(00)00039-1.
- Bøtter-Jensen L, Andersen CE, Duller GAT and Murray AS, 2003. Developments in radiation, stimulation and observation facilities in luminescence measurements. *Radiation Measurements* 37: 535–541, DOI 10.1016/S1350-4487(03)00020-9.
- Bøtter-Jensen L, Thomsen KJ and Jain M, 2010. Review of optically stimulated luminescence (OSL) instrumental developments for retrospective dosimetry. *Radiation Measurements* 45: 253–257, DOI 10.1016/j.radmeas.2009.11.030.
- Brock F, Higham T, Ditchfield P and Ramsey CB, 2010. Current pretreatment methods for AMS radiocarbon dating at the Oxford Radiocarbon Accelerator Unit (ORAU). *Radiocarbon* 52(1): 103–112.
- Buylaert J-P, Murray AS, Thomsen KJ and Jain M, 2009. Testing the potential of an elevated temperature IRSL signal from K-feldspar. *Radiation Measurements* 44(5): 560–565, DOI 10.1016/j.radmeas.2009.02.007.
- Buylaert J-P, Jain M, Murray AS, Thomsen KJ, Thiel C and Sohbati R, 2012. A robust feldspar luminescence dating method for Middle and Late Pleistocene sediments. *Boreas* 41: 435–451, DOI 10.1111/j.1502-3885.2012.00248.x.
- Chang H-C and Wang L-C, 2010. A simple proof of Thue’s Theorem on Circle Packing. WEB site: <<http://arxiv.org/pdf/1009.4322v1.pdf>>. Accessed 2014 July 24.
- Cunningham AC, Wallinga J and Minderhoud PSJ, 2011. Expectations of scatter in equivalent-dose distributions when using multi-grain aliquots for OSL dating. *Geochronometria* 38(4): 424–431, DOI 10.2478/s13386-011-0048-z.
- Cayre O, Lancelot Y and Vincent E, 1999. Paleoceanographic reconstruction from planktonic foraminifera off the Iberian Margin: Temperature, salinity, and Heinrich events. *Paleoceanography* 14(3): 384–396, DOI 10.1029/1998PA900027.
- Demuro M, Roberts RG, Froese DG, Arnold LJ, Brock F and Bronk Ramsey C, 2008. Optically stimulated luminescence dating of single and multiple grains of quartz from perennally frozen loess in western Yukon Territory, Canada: Comparison with radiocarbon chronologies for the late Pleistocene Dawson tephra. *Quaternary Geochronology* 3: 346–364, DOI 10.1016/j.quageo.2007.12.003.
- Demuro M, Arnold LJ, Froese DG and Roberts RG, 2013. OSL dating of loess deposits bracketing Sheep Creek tephra beds, northwest Canada: Dim and problematic single-grain OSL characteristics and their effect on multi-grain age estimates. *Quaternary Geochronology* 15: 67–87, DOI 10.1016/j.quageo.2012.11.003.
- Duller GAT, 2003. Distinguishing quartz and feldspar in single grain luminescence measurements. *Radiation Measurements* 37: 161–165, DOI 10.1016/S1350-4487(02)00170-1.
- Duller GAT, 2006. Single grain optical dating of glacial deposits. *Quaternary Geochronology* 1: 296–304, DOI 10.1016/j.quageo.2006.05.018.
- Duller GAT, 2008. Single-grain optical dating of Quaternary sediments: why aliquot size matters in luminescence dating. *Boreas* 37: 589–612, DOI 10.1111/j.1502-3885.2008.00051.x.
- Duller GAT, 2012. Improving the accuracy and precision of equivalent doses determined using the optically stimulated luminescence signal from single grains of quartz. *Radiation Measurements* 47: 770–777, DOI 10.1016/j.radmeas.2012.01.006.
- Duller GAT, Bøtter-Jensen L, Murray AS and Truscott AJ, 1999. Single grain laser luminescence (SGLL) measurements using a novel automated reader. *Nuclear Instruments and Methods in Physics Research B* 155: 506–514, DOI 10.1016/S0168-583X(99)00488-7.
- Duller GAT, Bøtter-Jensen L and Murray AS, 2000. Optical dating of single sand-sized grains of quartz: sources of variability. *Radiation*

- Measurements* 32: 453–457, DOI 10.1016/S1350-4487(00)00055-X.
- Dunne J, Elmore D and Muzikar P, 1999. Scaling factors for the rates of production of cosmogenic nuclides for geometric shielding and attenuation at depth on sloped surfaces. *Geomorphology* 27: 3–11, DOI 10.1016/S0169-555X(98)00086-5.
- Fletcher WJ and Sánchez Goñi MF, 2008. Orbital- and sub-orbital-scale climate impacts on vegetation of the western Mediterranean basin over the last 48,000 yr. *Quaternary Research* 70: 451–464, DOI 10.1016/j.yqres.2008.07.002.
- Galbraith RF, 1988. Graphical Display of Estimates Having Differing Standard Errors. *Technometrics* 30(3): 271–281, DOI 10.1080/00401706.1988.10488400.
- Galbraith RF, 2003. A simple homogeneity test for estimates of dose obtained using OSL. *Ancient TL* 21(2): 75–77.
- Galbraith RF and Green PF, 1990. Estimating the component ages in a finite mixture. *Nuclear Tracks and Radiation Measurements* 17(3): 197–206, DOI 10.1016/1359-0189(90)90035-V.
- Galbraith RF and Roberts RG, 2012. Statistical aspects of equivalent dose and error calculation and display in OSL dating: An overview and some recommendations. *Quaternary Geochronology* 11: 1–27, DOI 10.1016/j.quageo.2012.04.020.
- Galbraith RF, Roberts RG, Laslett GM, Yoshida H and Olley JM, 1999. Optical dating of single and multiple grains of quartz from Jinmium rock shelter, Northern Australia: Part I, Experimental design and statistical models. *Archaeometry* 41(2): 339–364, DOI 10.1111/j.1475-4754.1999.tb00987.x.
- Galbraith RF, Roberts RG and Yoshida H, 2005. Error variation in OSL palaeodose estimates from single aliquots of quartz: a factorial experiment. *Radiation Measurements* 39: 289–307, DOI 10.1016/j.radmeas.2004.03.023.
- Grootes PM, Stuiver M, White JWC, Johnsen S and Jouzel J, 1993. Comparison of oxygen isotope records from the GISP2 and GRIP Greenland ice cores. *Nature* 366: 552–554, DOI 10.1038/366552a0.
- Guérin G, Mercier N and Adamiec G, 2011. Dose-rate conversion factors: update. *Ancient TL* 29(1): 5–8.
- Guérin G, Murray AS, Jain M, Thomsen KJ and Mercier N, 2013. How confident are we in the chronology of the transition between Howieson's Poort and Still Bay? *Journal of Human Evolution* 64: 314–317, DOI 10.1016/j.jhevol.2013.01.006.
- Heer AJ, Adamiec G and Moska P, 2012. How many grains are there on a single aliquot? *Ancient TL* 30(1): 9–16.
- Hemming SR, 2004. Heinrich Events: Massive Late Pleistocene detritus layer of the north Atlantic and their global climate imprint. *Reviews of Geophysics* 42: RG1005, DOI 10.1029/2003RG000128.
- Higham T, 2011. European Middle to Upper Palaeolithic radiocarbon dates are often older than they look: Problems with previous dates and some remedies. *Antiquity* 85(327): 235–249.
- Higham T, Brock F, Peresani M, Broglio A, Wood R and Douka K, 2009. Problems with radiocarbon dating the Middle to Upper Palaeolithic transition in Italy. *Quaternary Science Reviews* 28: 1257–1267, DOI 10.1016/j.quascirev.2008.12.018.
- Huang W and Ye T, 2011. Global optimization method for finding dense packings of equal circles in a circle. *European Journal of Operational Research* 210(3): 474–481, DOI 10.1016/j.ejor.2010.11.020.
- Huntley DJ and Baril MR, 1997. The K content of the K-feldspars being measured in optical dating or in thermoluminescence dating. *Ancient TL* 15(1): 11–13.
- Huntley DJ and Lamothe M, 2001. Ubiquity of anomalous fading in K-feldspars and the measurement and correction for it in optical dating. *Canadian Journal of Earth Sciences* 38: 1093–1106, DOI 10.1139/cjes-38-7-1093.
- Huntley DJ, Godfrey-Smith DI and Thewalt MLW, 1985. Optical dating of sediments. *Nature* 313: 105–107, DOI 10.1038/313105a0.
- IGME, 1972. Mapa Geológico de España. Escala 1:50.000. 912(26-36). Mula. Instituto Geológico y Minero de España, Madrid.
- Jacobs Z and Roberts RG, 2007. Advances in Optically Stimulated Luminescence Dating of Individual Grains of Quartz from Archeological Deposits. *Evolutionary Anthropology* 16: 210–223, DOI 10.1002/evan.20150.
- Jacobs Z, Duller GAT and Wintle AG, 2003. Optical dating of dune sand from Blombos Cave, South Africa: II – single grain data. *Journal of Human Evolution* 44: 613–625, DOI 10.1016/S0047-2484(03)00049-6.
- Jain M, Murray AS and Bøtter-Jensen L, 2004. Optically stimulated luminescence dating: how significant is incomplete light exposure in fluvial environments?. *Quaternaire* 15(1/2): 143–157.
- Jörös O and Street M, 2008. At the end of the ¹⁴C time scale – the Middle to Upper Paleolithic record of western Eurasia. *Journal of Human Evolution* 55: 782–802, DOI 10.1016/j.jhevol.2008.04.002.
- Kars RH, Wallinga J and Cohen KM, 2008. A new approach towards anomalous fading correction for feldspar IRSL dating – tests on samples in field saturation. *Radiation Measurements* 43: 786–790, DOI 10.1016/j.radmeas.2008.01.021.
- Kars RH, Busschers FS and Wallinga J, 2012. Validating post IR-IRSL dating on K-feldspars through comparison with quartz OSL ages. *Quaternary Geochronology* 12: 74–86, DOI 10.1016/j.quageo.2012.05.001.
- Klasen N, Fiebig M, Preusser F, Reitner JM and Radtke U, 2007. Luminescence dating of proglacial sediments from the Eastern Alps. *Quaternary International* 164–165: 21–32, DOI 10.1016/j.quaint.2006.12.003.
- Kreutzer S, Schmidt C, Fuchs MC, Dietze M, Fischer M and Fuchs M, 2012. Introducing an R package for luminescence dating analysis. *Ancient TL* 30(1): 1–8.
- Lai ZP, Zöller L, Fuchs M and Brückner H, 2008. Alpha efficiency determination for OSL of quartz extracted from Chinese loess. *Radiation Measurements* 43: 767–770, DOI 10.1016/j.radmeas.2008.01.022.
- Lapp T, Jain M, Thomsen KJ, Murray AS and Buylaert J-P, 2012. New luminescence measurement facilities in retrospective dosimetry. *Radiation Measurements* 47: 803–808, DOI 10.1016/j.radmeas.2012.02.006.
- Lomax J, 2009. *Palaeodunes as archives of environmental change – A case study from the western Murray Basin (South Australia) based on optically stimulated luminescence (OSL) dating of single and multiple grains of quartz*. Ph.D. Thesis, University of Cologne, Germany: 265pp.
- Lowick SE, Trauerstein M and Preusser F, 2012. Testing the application of post IR-IRSL dating to fine grain waterlain sediments. *Quaternary Geochronology* 8: 33–40, DOI 10.1016/j.quageo.2011.12.003.
- Maroto J, Vaquero M, Arrizabalaga A, Baena J, Baquedano E, Jordá J, Julià R, Montes R, van der Plicht J, Rasines P and Wood R, 2012. Current issues in late Middle Palaeolithic chronology: New assessments from Northern Iberia: The Neanderthal Home: spatial and social behaviours. *Quaternary International* 247: 15–25, DOI 10.1016/j.quaint.2011.07.007.
- Martins AA, Cunha PP, Buylaert J-P, Huot S, Murray AS, Dinis P and Stokes M, 2010. K-feldspar IRSL dating of a Pleistocene river terrace staircase sequence of the Lower Tejo River (Portugal, western Iberia). *Quaternary Geochronology* 5: 176–180, DOI 10.1016/j.quageo.2009.06.004.
- Martínez C, 1997. El yacimiento musteriense de Cueva Antón (Mula, Murcia) (The Mousterian site of Cueva Antón (Mula, Murcia)). *Memorias de Arqueología de la Región de Murcia* 6: 18–47 (in Spanish).
- Medialdea A, Thomsen KJ, Murray AS and Benito G, 2014. Reliability of equivalent-dose determination and age-models in the OSL dating of historical and modern palaeoflood sediments. *Quaternary Geochronology* 22: 11–24, DOI 10.1016/j.quageo.2014.01.004.
- Meese DA, Gow AJ, Alley RB, Zielinski GA, Grootes PM, Ram M, Taylor KC, Mayewski PA and Bolzan JF, 1997. The Greenland Ice Sheet Project 2 depth-age scale: Methods and results. *Journal of Geophysical Research* 102(C12): 26411–26423, DOI 10.1029/97JC00269.
- Mejdahl V, 1979. Thermoluminescence dating: beta attenuation in quartz grains. *Archaeometry* 21: 61–73, DOI 10.1111/j.1475-4754.1979.tb00241.x.

- Murray AS and Wintle AG, 2000. Luminescence dating of quartz using an improved single-aliquot regenerative-dose protocol. *Radiation Measurements* 32: 57–73, DOI 10.1016/S1350-4487(99)00253-X.
- Murray AS and Wintle AG, 2003. The single aliquot regenerative dose protocol: potential for improvements in reliability. *Radiation Measurements* 37: 377–381, DOI 10.1016/S1350-4487(03)00053-2.
- Murray AS, Thomsen KJ, Masuda N, Buylaert JP and Jain M, 2012. Identifying well-bleached quartz using different bleaching rates of quartz and feldspar luminescence signals. *Radiation Measurements* 47: 688–695, DOI 10.1016/j.radmeas.2012.05.006.
- Nathan RP, Thomas PJ, Jain M, Murray AS and Rhodes EJ, 2003. Environmental dose rate heterogeneity of beta radiation and its implications for luminescence dating: Monte Carlo modelling and experimental validation. *Radiation Measurements* 37: 305–313, DOI 10.1016/S1350-4487(03)00008-8.
- Olley JM, Roberts RG and Murray AS, 1997. Disequilibria in the uranium decay series in sedimentary deposits at Allen's cave, Nullarbor Plain, Australia: Implications for dose rate determinations. *Radiation Measurements* 27: 433–443, DOI 10.1016/j.jhevol.2013.01.006.
- Olley JM, Caitcheon G and Murray AS, 1998. The distribution of apparent dose as determined by optically stimulated luminescence in small aliquots of fluvial quartz: implications for dating young sediments. *Quaternary Geochronology* 17: 1033–1040, DOI 10.1016/S0277-3791(97)00090-5.
- Poolton NRJ, Wallinga J, Murray AS, Bulur E and Bøtter-Jensen L, 2002. Electrons in feldspar I: on the wavefunction of electrons trapped at simple lattice defects. *Physics and Chemistry of Minerals* 29: 210–216, DOI 10.1007/s00269-001-0217-3.
- Prescott JR and Hutton JT, 1988. Cosmic ray and gamma ray dosimetry for TL and ESR. *Nuclear Tracks and Radiation Measurements* 14(1/2): 223–227, DOI 10.1016/1359-0189(88)90069-6.
- Prescott JR and Hutton JT, 1994. Cosmic ray contributions to dose rates for luminescence and ESR dating: large depths and long-term time variations. *Radiation Measurements* 23(2/3): 497–500, DOI 10.1016/1350-4487(94)90086-8.
- Preusser F, Andersen BG, Denton GH and Schlüchter C, 2005. Luminescence chronology of Late Pleistocene glacial deposits in North Westland, New Zealand. *Quaternary Science Reviews* 24: 2207–2227, DOI 10.1016/j.quascirev.2004.12.005.
- Preusser F, Ramseyer K and Schlüchter C, 2006. Characterisation of low OSL intensity quartz from the New Zealand Alps. *Radiation Measurements* 41: 871–877, DOI 10.1016/j.radmeas.2006.04.019.
- Reimann T, Tsukamoto S, Naumann M and Frechen M, 2011. The potential of using K-rich feldspars for optical dating of young coastal sediments – A test case from Darss-Zingst peninsula (southern Baltic Sea coast). *Quaternary Geochronology* 6: 207–222, DOI 10.1016/j.quageo.2010.10.001.
- Reimann T, Thomsen KJ, Jain M, Murray AS and Frechen M, 2012a. Single-grain dating of young sediments using the pIRIR signal from feldspar. *Quaternary Geochronology* 11: 28–41, DOI 10.1016/j.quageo.2012.04.016.
- Reimann T, Lindhorst S, Thomsen KJ, Murray AS and Frechen M, 2012b. OSL dating of mixed coastal sediment (Sylt, German Bight, North Sea). *Quaternary Geochronology* 11: 52–67, DOI 10.1016/j.quageo.2012.04.006.
- Rhodes EJ, 2007. Quartz single grain OSL sensitivity distributions: implications for multiple grain single aliquot dating. *Geochronometria* 26: 19–29, DOI 10.2478/v10003-007-0002-5.
- Rittenour TM, 2008. Luminescence dating of fluvial deposits: applications to geomorphic, palaeoseismic and archaeological research. *Boreas* 37: 613–635, DOI 10.1111/j.1502-3885.2008.00056.x.
- Roberts HM, 2012. Testing Post-IR IRSL protocols for minimising fading in feldspars, using Alaskan loess with independent chronological control. *Radiation Measurements* 47: 716–724, DOI 10.1016/j.radmeas.2012.03.022.
- Roberts RG, Galbraith RF, Yoshida H, Laslett GM and Olley JM, 2000. Distinguishing dose populations in sediment mixtures: a test of single-grain optical dating procedures using mixtures of laboratory dosed quartz. *Radiation Measurements* 32: 459–465, DOI 10.1016/S1350-4487(00)00104-9.
- Smedley RK, Duller GAT, Pearce NJG and Roberts HM, 2012. Determining the K-content of single-grains of feldspar for luminescence dating. *Radiation Measurements* 47: 790–796, DOI 10.1016/j.radmeas.2012.01.014.
- Sohbati R, Murray AS, Buylaert J-P, Ortuño M, Cunha PP and Masana E, 2012. Luminescence dating of Pleistocene alluvial sediments affected by the Alhama de Murcia fault (eastern Betics, Spain) – a comparison between OSL, IRSL and post-IR IRSL ages. *Boreas* 41: 250–262, DOI 10.1111/j.1502-3885.2011.00230.x.
- Specht E, 2012. The best known packings of equal circles in a circle. WEB site: <http://www.packomania.com>. Accessed 2014 July 24.
- Spooner NA, 1992. Optical dating: preliminary results on the anomalous fading of luminescence from feldspars. *Quaternary Science Reviews* 11: 139–145, DOI 10.1016/0277-3791(92)90055-D.
- Spooner NA, 1994. The anomalous fading of infrared-stimulated luminescence from feldspars. *Radiation Measurements* 23: 625–632, DOI 10.1016/1350-4487(94)90111-2.
- Spooner NA and Allsop A, 2000. The spatial variation of dose-rate from ⁹⁰Sr/⁹⁰Y beta sources for use in luminescence dating. *Radiation Measurements* 32: 49–55, DOI 10.1016/S1350-4487(99)00252-8.
- Stone AEC and Bailey RM, 2012. The effect of single grain luminescence characteristics on single aliquot equivalent dose estimates. *Quaternary Geochronology* 11: 68–78, DOI 10.1016/j.quageo.2012.03.014.
- Thiel C, Buylaert J-P, Murray A, Terhorst B, Hofer I, Tsukamoto S and Frechen M, 2011. Luminescence dating of the Stratzing loess profile (Austria) – Testing the potential of an elevated temperature post-IR IRSL protocol. *Quaternary International* 234: 23–31, DOI 10.1016/j.quaint.2010.05.018.
- Thomsen KJ, Murray AS and Bøtter-Jensen L, 2005. Sources of variability in OSL dose measurements using single grains of quartz. *Radiation Measurements* 39: 47–61, DOI 10.1016/j.radmeas.2004.01.039.
- Thomsen KJ, Murray AS, Bøtter-Jensen L and Kinahan J, 2007. Determination of burial dose in incompletely bleached fluvial samples using single grains of quartz. *Radiation Measurements* 42: 370–379, DOI 10.1016/j.radmeas.2007.01.041.
- Thomsen KJ, Bøtter-Jensen L, Jain M, Denby PM and Murray AS, 2008a. Recent instrumental developments for trapped electron dosimetry. *Radiation Measurements* 43: 414–421, DOI 10.1016/j.radmeas.2008.01.003.
- Thomsen KJ, Murray AS, Jain M and Bøtter-Jensen L, 2008b. Laboratory fading rates of various luminescence signals from feldspar-rich sediment extracts. *Radiation Measurements* 43: 1474–1486, DOI 10.1016/j.radmeas.2008.06.002.
- Thomsen KJ, Murray AS and Jain M, 2011. Stability of IRSL signals from sedimentary K-feldspar samples. *Geochronometria* 38(1): 1–13, DOI 10.2478/s13386-011-0003-z.
- Vasiliniuc Ş, Vandenberghe DAG, Timar-Gabor A, Panaiotu C, Cosma C and van den Haute P, 2012. Testing the potential of elevated temperature post-IR IRSL signals for dating Romanian loess. *Quaternary Geochronology* 10: 75–80, DOI 10.1016/j.quageo.2012.02.014.
- Vegas J, Ruiz-Zapata B, Ortiz JE, Galán L, Torres T, García-Cortés A, Gil-García MJ, Pérez-González A and Gallardo-Millán JL, 2010. Identification of arid phases during the last 50 cal. ka BP from the Fuentillejo maar-lacustrine record (Campo de Calatrava Volcanic Field, Spain). *Journal of Quaternary Science* 25(7): 1051–1062, DOI 10.1002/jqs.1262.
- Wallinga J, 2002. Optically stimulated luminescence dating of fluvial deposits: a review. *Boreas* 31: 303–322, DOI 10.1111/j.1502-3885.2002.tb01076.x.
- Wallinga J, Bos AJJ, Dorenbos P, Murray AS and Schokker J, 2007. A test case for anomalous fading correction in IRSL dating. *Quaternary Geochronology* 2: 216–221, DOI 10.1016/j.quageo.2006.05.014.

- Wintle AG, 1997. Luminescence dating: laboratory procedures and protocols. *Radiation Measurements* 27(5/6): 769–817, DOI 10.1016/S1350-4487(97)00220-5.
- Wintle AG and Murray AS, 2006. A review of quartz optically stimulated luminescence characteristics and their relevance in single-aliquot regeneration dating protocols. *Radiation Measurements* 41: 369–391, DOI 10.1016/j.radmeas.2005.11.001.
- Wood RE, Barroso-Ruiz C, Caparrós M, Jordá-Pardo JF, Santos BG and Higham TFG, 2013. Radiocarbon dating casts doubt on the late chronology of the Middle to Upper Palaeolithic transition in southern Iberia. *Proceedings of the National Academy of Sciences of the United States of America* 110(8): 2781–2786, DOI 10.1073/pnas.1207656110.
- Yoshida H, Roberts RG, Olley JM, Laslett GM and Galbraith RF, 2000. Extending the age range of optical dating using single ‘super-grains’ of quartz. *Radiation Measurements* 32: 439–446, DOI 10.1016/S1350-4487(99)00287-5.
- Zhao H and Li SH, 2005. Internal dose rate in K-feldspar grains from radioactive elements other than potassium. *Radiation Measurements* 40: 84–93, DOI 10.1016/j.radmeas.2004.11.004.
- Zilhão J and Villaverde V, 2008. The Middle Paleolithic of Murcia. *Treballs d’Arqueologia* 14: 229–248.
- Zilhão J, Angelucci DE, Badal-García E, d’Errico F, Daniel F, Dayet L, Douka K, Higham TFG, Martínez-Sánchez MJ, Montes-Bernárdez R, Murcia-Mascarós S, Pérez-Sirvent C, Roldán-García C, Vanhaeren M, Villaverde V, Wood R and Zapata J, 2010. Symbolic use of marine shells and mineral pigments by Iberian Neandertals. *Proceedings of the National Academy of Sciences of the United States of America* 107(3): 1023–1028, DOI 10.1073/pnas.0914088107.
- Zilhão J, Angelucci DE, Burow C, Hilgers A, Kehl M, Villaverde V, Wood R and Zapata J, 2012. From Late Mousterian to Evolved Aurignacian: New Evidence for the Middle-to-Upper Paleolithic Transition in Mediterranean Spain. Abstracts European Society for the Study of Human Evolution, Bordeaux: 176.