

# Metadata Madness: Quality Issues in Metadata Management

**Daniel Gelaw Alemneh**  
**University of North Texas Libraries,**  
**Digital Projects Unit, Denton, Texas**

**[Dalemneh@library.unt.edu](mailto:Dalemneh@library.unt.edu)**

**TLA, April 11, 2007**

# Quality Issues

- **The two aspects of digital library data quality:**
  1. **The quality of the data in the objects themselves**
  2. **The quality of the metadata associated with the objects**
  
- **Maintaining usable, flexible, interoperable, and sustainable digital collections necessitates maintaining high quality metadata about those digital objects.**

# Metadata Quality Issues

- **In terms of Typographical Errors:**
  - Letter transposition e.g. 9198 for 1998
  - Letter omission, e.g. Omt for omit
  - Letter insertion, e.g. asnd for and
  - letter substitution or misstrokes, e.g. likw for like
- **No omissions**
  - Null values for mandatory elements
  - Incomplete information
- **Non ambiguous**
  - Inconsistency eg. multiple spellings, multiple possible meanings, mixed cases, initials, etc

# Factors Influencing Metadata Quality

- **Resource types**
  - Heterogeneity
- **Local requirements**
  - Different functionality and granularity
- **Collaborators requirements**
  - Diverse and conflicting requirements
- **Cost**
  - Resource limitations (CBA)



# Factors Influencing Metadata Quality: *Resource Types Heterogeneity*

- **What type of objects will the repository contain?**
  - Museum objects,
  - Archives and historical documents,
  - Wide format items
  - Scholarly documents, etc.

# Factors Influencing Metadata Quality:

## *Resource Types Heterogeneity ...*

- **How will they be described?**
  - Levels of details
- **How will they be used?**
  - Functionality required
- **By whom?**
  - Users category

# **Factors Influencing Metadata Quality:** *Local/Collaborators Requirements*

- **What functionality is required locally?  
By collaborating institutions?**
- **What entry points will be required locally? And or by collaborating institutions?**
  - The type of access,
  - Type of templates,
  - Type of interfaces, etc.

# Factors Influencing Metadata Quality: *Collaborators Requirements*

- **How does the information-seeking behavior of the diverse users differ?**
  - Genealogists
  - Historians
  - Students
  - Researchers, etc.
- **How best their need can be met?**



# Factors Influencing Metadata Quality: *Collaborator Requirements*

## **What are the associated digital rights issues?**

- Content packaging,
- Repackaging
- Repurposing

## **Does participation in the wider community impose specific requirements?**

- Are requirements formal or informal?
- Will access restrictions be imposed?

# Factors Influencing Metadata Quality: *Collaborators Requirements*

- **Will metadata be meaningful within aggregations of various kinds?**
  - Mapping and Crosswalks
- **What is required for interoperability?**
  - Structure
  - Semantics
  - Syntax

# Factors Influencing Metadata Quality:

## *Cost Issues*

- **Are resources sufficient to produce the required metadata quality?**
  - Available expertise, etc.
- **If not, what are the priorities?**
  - Cost Benefit Analysis

# Managing Metadata Quality

- **Identify the 'right' metadata**
  - Avoid large schemas
- **Create at the right time**
  - At creation vs. at other points in object life-cycle
  - Human vs. automatic
- **Determine level of quality required**
  - Collaborators may have diverse and sometimes conflicting metadata requirements.



# Managing Metadata Quality

- **Determine nature of gap and how to close**
  - Effectiveness
  - Efficiency
  - Practicability
  - Scalability
- **Produce the required metadata quality**
  - Quality Assurance mechanisms

# Managing Metadata Quality ...

## ■ **Compromise**

- One size does not fit all!

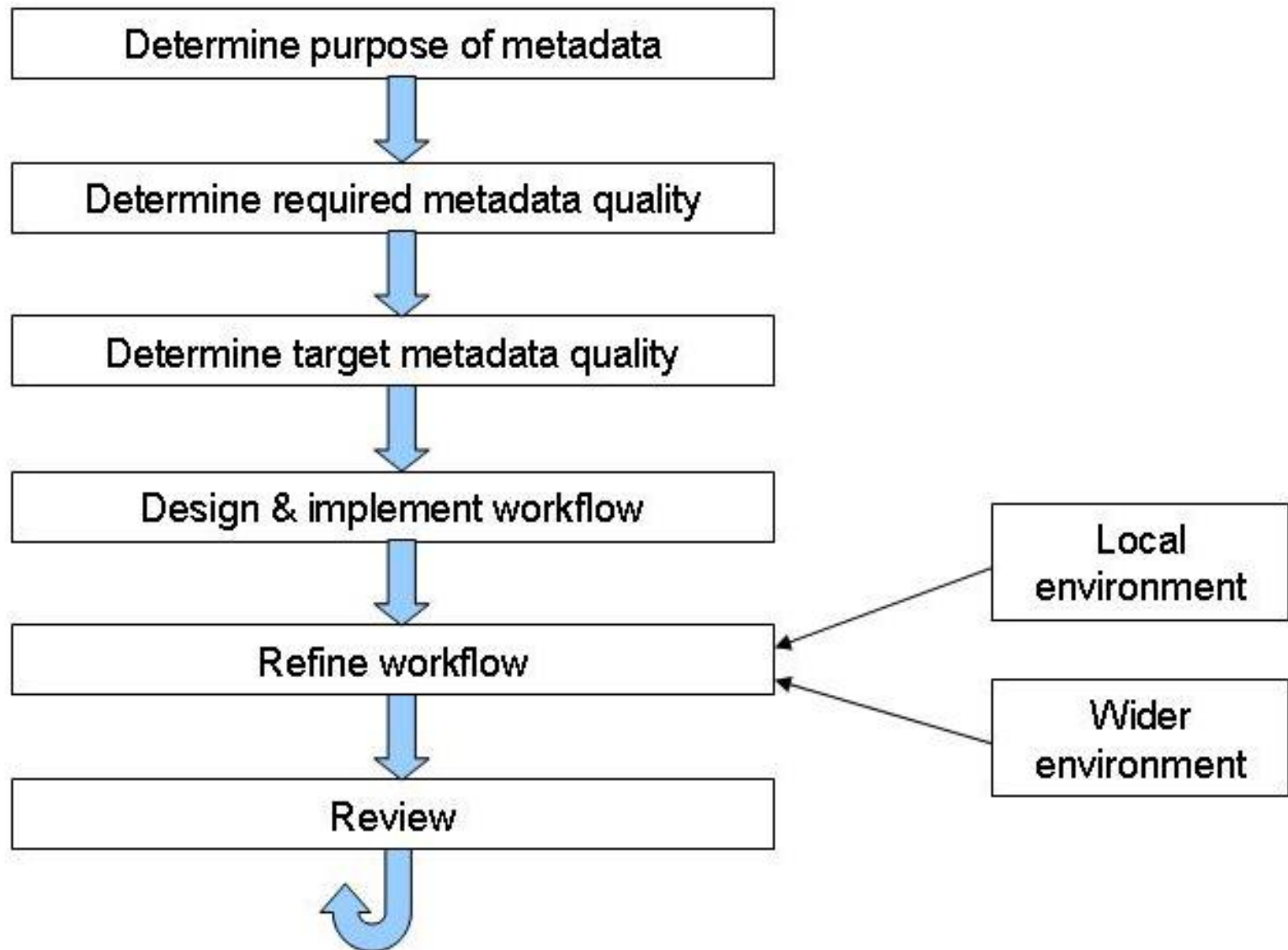
## ■ **Prioritize**

- Resources unlikely to be available to meet all requirements

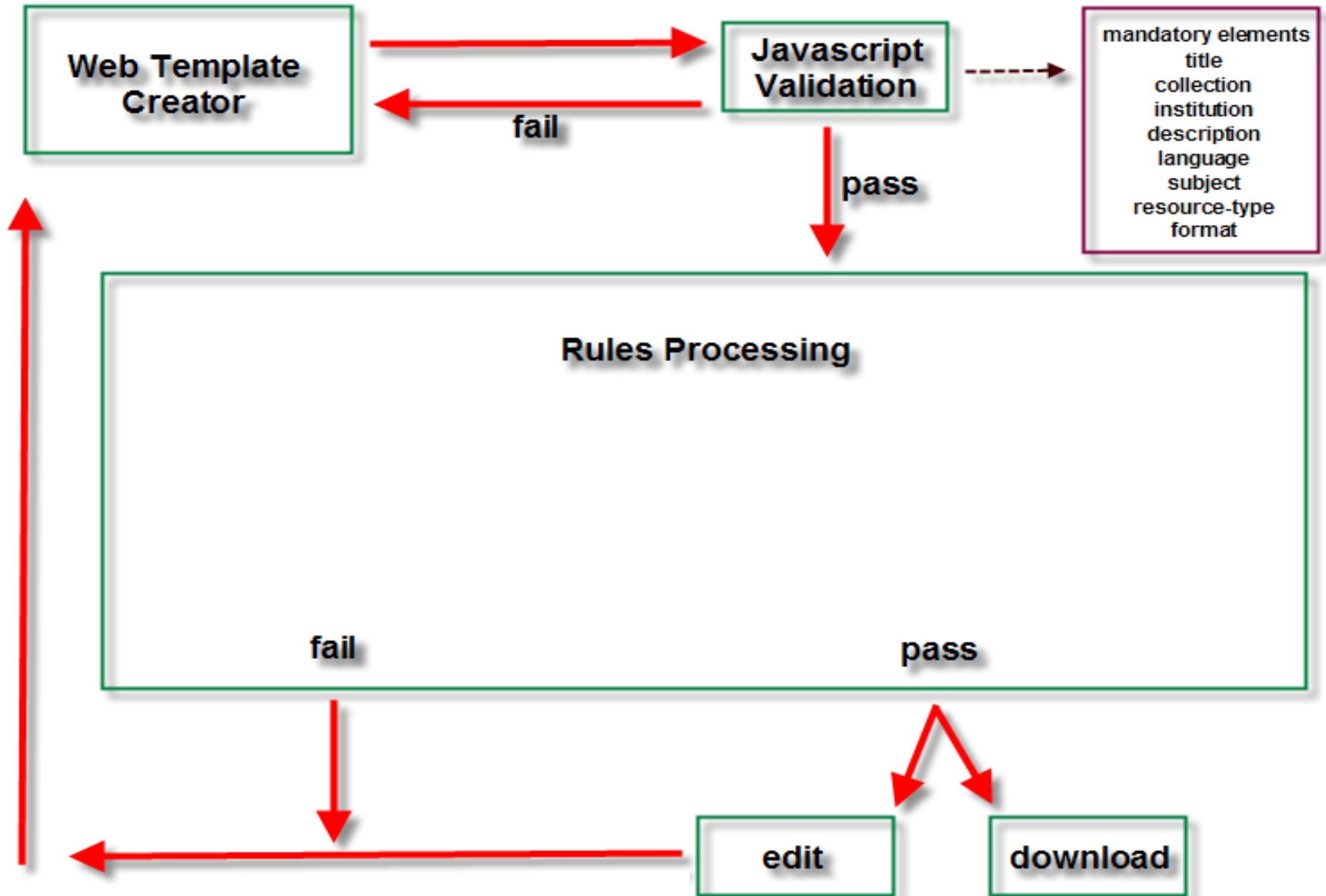
## ■ **Test the workflow**

- The quality cycle

# Quality Assurance Lifecycle



# UNT Libraries' Quality Assurance for Mandatory Elements





# UNT Libraries' Quality Assurance Mechanisms: Null Analysis for Mandatory Elements

University of North Texas Digital Projects: Metadata Analysis - Mozilla Firefox

File Edit View Go Bookmarks Tools Help

http://digitalprojects.library.unt.edu/metadata/null.php?system=PTH

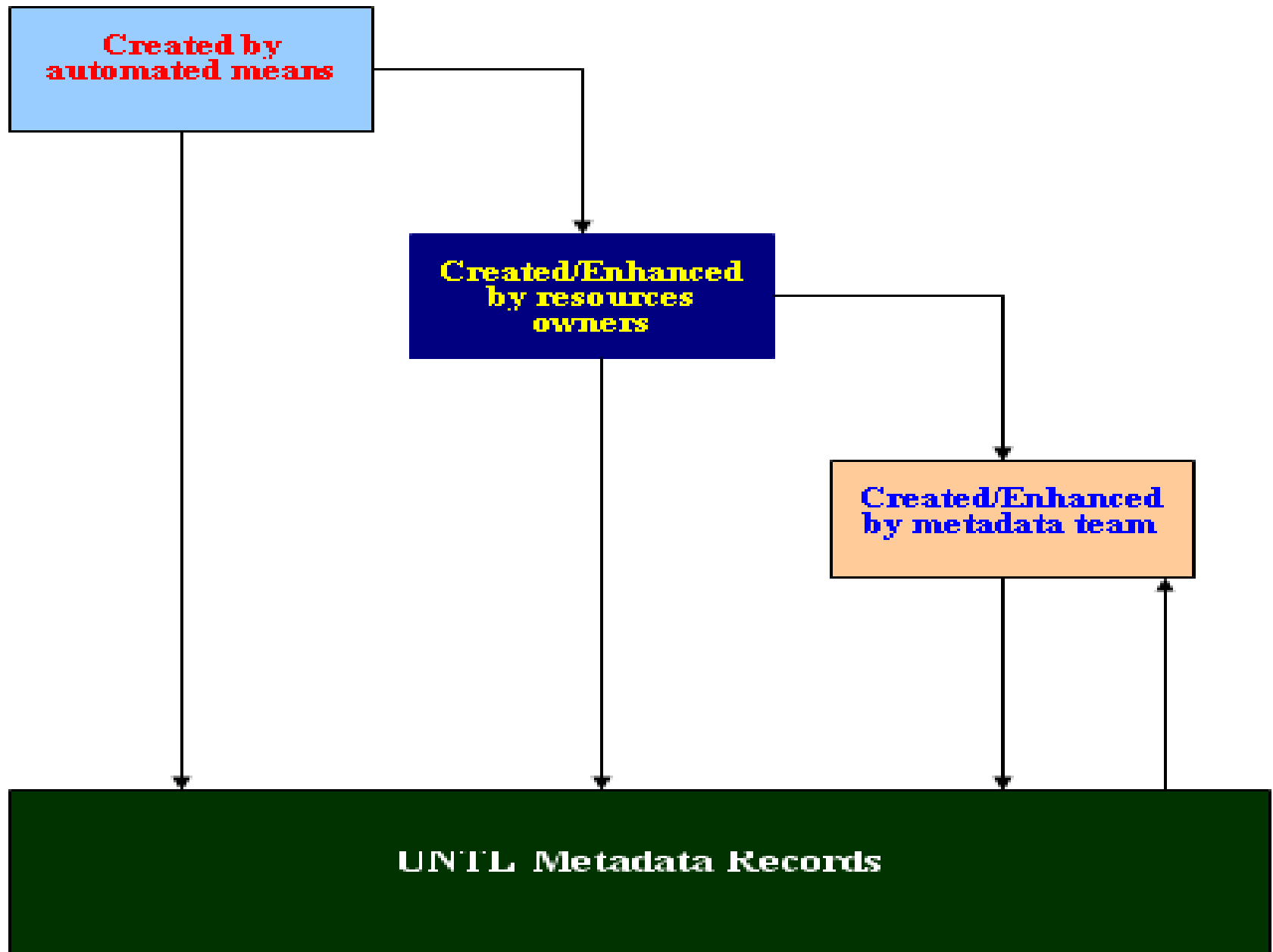
Getting Started Latest Headlines University of North ... Google Calendar

[home](#) | [about](#) | [changes](#) | [activity](#)

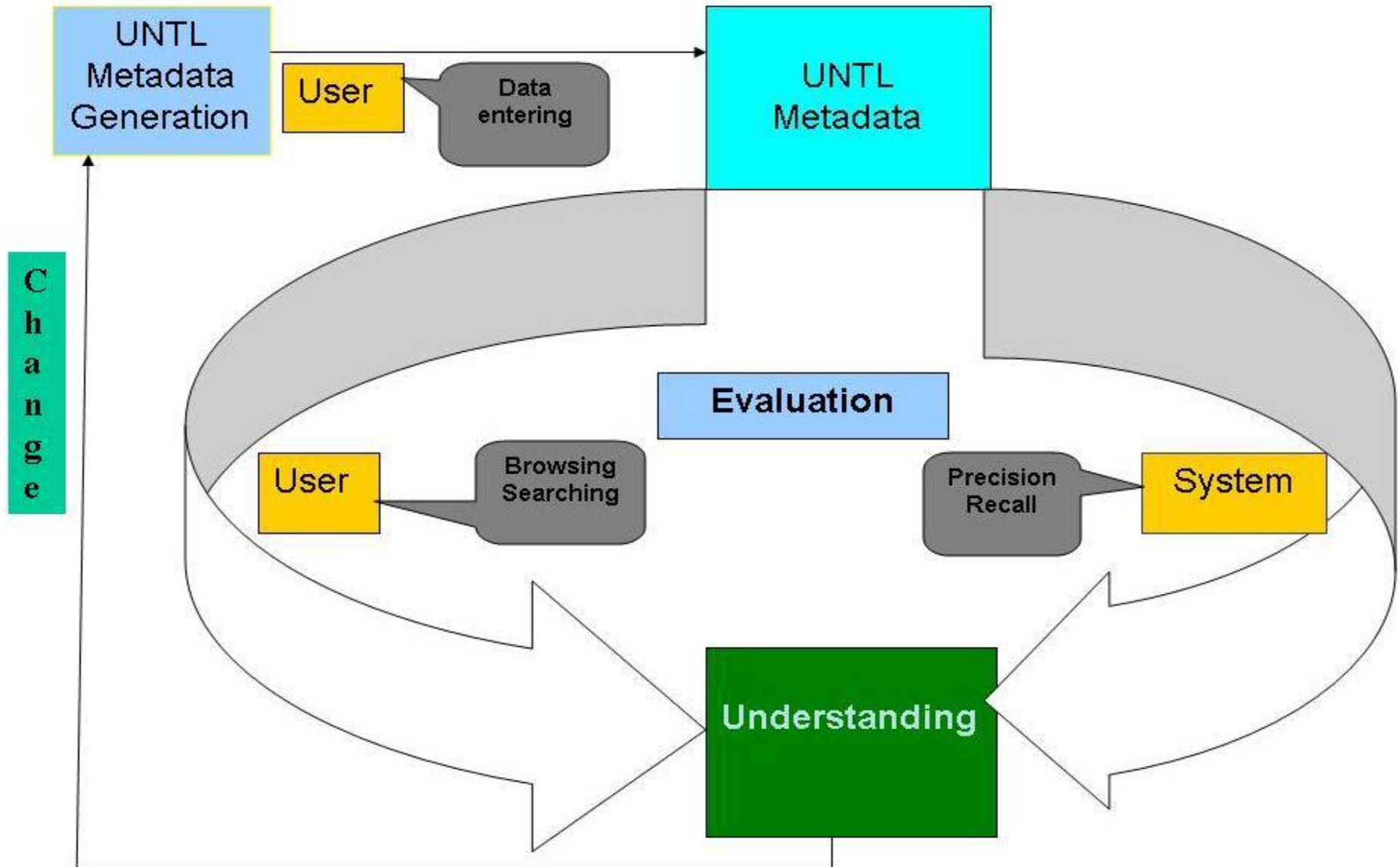
## Metadata Analysis: **NULL**

DC Element	Number that are NULL
<a href="#">DC Title</a>	0
<a href="#">DC Creator</a>	10329
<a href="#">DC Subject</a>	0
<a href="#">DC Description</a>	0
<a href="#">DC Contributor</a>	16369
<a href="#">DC Publisher</a>	18522
<a href="#">DC Identifier</a>	1037
<a href="#">DC Source</a>	13803
<a href="#">DC Relation</a>	18255
<a href="#">DC Language</a>	0
<a href="#">DC Coverage</a>	0
<a href="#">DC Date</a>	2790
<a href="#">DC Resource Type</a>	0
<a href="#">DC Format</a>	0
<a href="#">DC Rights</a>	19156

# UNT Libraries Quality Assurance Lifecycle



# UNT Libraries' Quality Assurance Lifecycle Loop



Measure Quality and Usefulness of UNTL metadata

# Challenges and Scenarios: Summaries

- **At what “level” is metadata assigned?**
- **How much of the process can be automated?**
- **What kind of quality assurance mechanisms implemented?**
- **How will the metadata be maintained?**
- **What kind of skills will be required?**



**Questions?**