



## SLURRY PREPARATION METHODS AFFECT DENTAL PORCELAIN RELIABILITY

---

**Alejandro Pelaez-Vargas, DDS, MSc,<sup>a</sup> Jaime A. Dussán, DDS,<sup>b</sup> Luis F. Restrepo, DDS,<sup>c</sup> Carlos Paucar, MSc,<sup>d</sup> Jorge A. Ferreira, MS,<sup>e</sup> and Fernando J. Monteiro, Eng. MSc, PhD<sup>f</sup>**

Institute of Biomedical Engineering, Porto, Portugal;  
University of Porto, Porto, Portugal; CES University,  
Medellin, Colombia; National University of Columbia, Medellin,  
Colombia; National Laboratory of Energy and Geology, S. Mamede  
Infesta, Portugal.

---

**Statement of problem.** One-step and incremental mixing procedures are currently used to produce dental ceramic pastes. In the ceramic industry, high quality is obtained using one-step mixing, but in dentistry, the best method has not been yet determined.

**Purpose.** The purpose of this study is to evaluate the effects of 2 mixing techniques on the biaxial flexural strength and microstructure of dental porcelain.

**Material and methods.** Feldspathic porcelain discs (2 × 15 mm in diameter) were produced and divided according to the ceramic paste preparation method, powder-liquid incremental mixing group (n=50) or one-step mixing, as a control group (n=50). Specimens were tested for biaxial flexural strength and characterized using porosimetry, relative humidity, SEM/EDS, XRD, and FT-IR analyses. Statistical analysis was conducted using Weibull statistics. The Weibull modulus, characteristic strength and relative humidity were compared between groups, using Student's t-test and Mann-Whitney U test ( $\alpha=.05$ ).

**Results.** The powder-liquid incremental mixing group showed significantly higher values (SD) of Weibull modulus (6.74 90.700),  $P<.001$ ) and characteristic strength (79.87 92.01) MPa,  $P<.001$ ) when compared to the one-step mixing group (4.94 (0.94)) and (75.95 (2.6)) MPa). Significantly lower mean (SD) relative humidity values ( $P=.009$ ) were found for powder-liquid incremental mixing group (20 (0.5)) compared to one-step mixing group (22 (1)). XRD spectra showed that the one-step mixing group produced higher amounts of the amorphous phase.

**Conclusions.** Specimens produced by the incremental mixing technique showed higher biaxial flexural strength than one-step mixing. (J Prosthet Dent 2011;105:\*\*\*)\*\*

---

Partially supported by scholarship No. E05D050652CO from AlBan Program (European Union) and scholarship No. FCT/SFRH/BD/36220/2007 and Grant No. FCT/PTDC/CTM/100120/2008 from Portuguese Science and Technology Foundation (FCT, Portugal) Preliminary results were presented at IADR IADR/AADR/CADR 85th General Session and Exhibition, New Orleans. March 21-24, 2007.

<sup>a</sup>Ph.D Student. Institute of Biomedical Engineering (INEB - Instituto de Engenharia Biomédica) and Faculty of Engineering. University of Porto (FEUP, Universidade do Porto).

<sup>b</sup>Former Postgraduate Student. CES-LPH Research Group. Faculty of Dentistry. CES University (Universidad CES).

<sup>c</sup>Assistant Professor. CES-LPH Research Group. Faculty of Dentistry. CES University (Universidad CES).

<sup>d</sup>Associate Professor. Chemistry Department. Faculty of Sciences. National University of Colombia (Universidad Nacional de Colombia).

<sup>e</sup>Researcher. National Laboratory of Energy and Geology (LNEG - Laboratorio Nacional de Energia e Geologia).

<sup>f</sup>Full Professor. Institute of Biomedical Engineering (INEB - Instituto de Engenharia Biomédica) and Faculty of Engineering, University of Porto (DEMM, FEUP, Universidade do Porto).

## CLINICAL IMPLICATIONS

Ceramic slurry preparation may be a relevant factor in the performance of dental ceramics. A small variation in the relative humidity of green-state discs after de-molding, results in a decrease in Weibull modulus and characteristic strength for the one-step mixing method, which could be related to the presence of increased amounts of amorphous phase.

Dental feldspathic porcelains are composed of an amorphous matrix ( $K_2O-Al_2O_3-SiO_2$  glasses) with dispersed leucite particles and oxides, responsible for lowering the melting temperature of the material and providing color and opacity.<sup>1,2</sup> Low-fusing porcelains in fixed dental prostheses (FDP) exhibit desirable properties such as excellent esthetics,<sup>3</sup> high biocompatibility,<sup>4</sup> high wear resistance,<sup>5,6</sup> and high chemical stability.<sup>7</sup> However, their brittle behavior can jeopardize long-term durability of FDP, which can result in catastrophic failures under physiological or pathological loading during oral function.<sup>8-10</sup>

The long-term durability of porcelain restorations may be increased using several strategies that might be classified as preventive, to avoid the formation and propagation of large and heterogeneously distributed flaws,<sup>11-16</sup> thus, having direct effect on the mechanical properties; and corrective, focused on restoration repair procedures after failure.<sup>17-18</sup>

Dental porcelain processing involves several stages that must be carefully controlled to guarantee the final quality of the prosthetic work. After industrial production of high quality powders with controlled particle size and complex chemical composition, other important steps are performed by both the dental technician and the dentist, including the mixing of ceramic paste, followed by fabrication of the prostheses, sintering and polishing.<sup>14</sup> Avoiding the introduction of defects during the manufacture of porcelain teeth is essential to obtain restorations with high mechanical properties, and therefore, longer clinical lifetimes.<sup>19</sup>

In the ceramic industry, optimized proportions are used to produce the porcelain slurry in which water is mixed with the porcelain powder in a highly controlled manner. In dentistry, porcelain slurries are also obtained by mixing water with the porcelain powder, however, an empirical approach is used in the laboratory to obtain a paste consistency that results in intra and inter operator variability.<sup>15,20</sup>

There are 2 different methods commonly used for preparing ceramic pastes in the dental laboratory, the incremental technique, in which water is added in small increments to the powder, and the one-step technique, in which a predetermined amount of water is added in a single step to the porcelain powder. Both techniques aim at obtaining a final creamy porcelain slurry with an optimal powder/liquid ratio of 2.8 g/mL.<sup>15,19</sup> When this optimal powder/liquid ratio is obtained, the liquid occupies small spaces between the ceramic particles and acts as a lubricant for particle movement, producing highly dense green-states and final fired-ceramics,<sup>8,9,15,19-22</sup> with homogeneously distributed microdefects and uniform porosity.<sup>23-25</sup> Excess water in the porcelain slurry is a problem, because excess water in the cast will evaporate and result in higher porosity. Moreover, excess water may react with some components of the porcelain and induce changes in the microstructure of the final fired product, changing the relative amounts of crystalline and glassy phases.<sup>26-30</sup>

Weibull statistics is a commonly used method for characterizing the failure of brittle materials under different flexural configurations.<sup>13,31,32</sup>

The Weibull distribution is an extremely valuable distribution with descriptors such as Weibull modulus (a dimensionless dispersion measurement) and characteristic strength (stress value at which the probability of failure (Pf) is 63.2%). The Weibull distribution is homologous to the descriptors used in normal distribution such as standard deviation (a dispersion measurement) and mean (a stress value where the Pf is 50%) values.<sup>32</sup> The accuracy of the Weibull analysis for dental ceramics depends on the quality of the specimens tested, as well as proper selection of the test design and algorithms to estimate the descriptors based on the obtained data.<sup>32</sup> A high Weibull modulus is advantageous, because it indicates a low structural variability among specimens and a more predictable failure behavior.<sup>33</sup> A low structural variability of the fired ceramic restorations, at least theoretically, might reduce the incidence of fractures and chips, therefore reducing the need for repair and replacement of FPR.

The purpose of the study was to evaluate the biaxial flexural strength and microstructure of porcelain specimens obtained by 2 different slurry preparation methods (powder-liquid incremental and one-step mixtures). The hypothesis was that there would be significant differences between the Weibull parameters calculated from biaxial flexural strength of specimens obtained by the different preparation techniques.

## MATERIAL AND METHODS

In this study low fusing porcelain (VITA SYSTEM 3D-MASTER shades,

56  
57  
58  
59  
60  
61  
62  
63  
6465 110 155  
66 111 156  
67 112 157  
68 113 158  
69 114 159  
70 115 160  
71 116 161  
72 117 162  
73 118 163  
74 119 164  
75 120 165  
76 121 166  
77 122 167  
78 123 168  
79 124 169  
80 125 170  
81 126 171  
82 127 172  
83 128 173  
84 129 174  
85 130 175  
86 131 176  
87 132 177  
88 133 178  
89 134 179  
90 135 180  
91 136 181  
92 137 182  
93 138 183  
94 139 184  
95 140 185  
96 141 186  
97 142 187  
98 143 188  
99 144 189  
100 145 190  
101 146 191  
102 147 192  
103 148 193  
104 149 194  
105 150 195  
106 151 196  
107 152 197  
108 153 198  
109 154 199

Color 4R 1.5; Vita Zahnfabrik, Bad Sackingen, Germany) was used to produce discs 15 mm in diameter and 2 mm thick. The specimens were divided in 2 groups, according to the preparation method.<sup>33</sup> Powder-liquid incremental group discs (n=50) were obtained by incremental addition of the liquid to the powder using a dental laboratory brush (#8; Smile Line, St-Imier, Switzerland). One-step group discs (n=50) were obtained by single addition of the liquid to the powder using 1.82 g of powder per 0.66 mL of distilled water.<sup>15</sup> All discs were fabricated using a 18 mm diameter plastic syringe (Becton Dickinson & Co, Franklin Lakes, NJ), which was sectioned and its plunger was polished and used as the disc base.<sup>34</sup>

In both methods, the ceramic paste was prepared at room temperature on a glass tile and then loaded into the syringe with a ceramic brush; the ceramic was condensed using an absorbent paper towel to remove the excess water.<sup>34</sup> The plunger of the syringe was placed 3 mm away from the top-edge using a periodontal probe. The surface of the disc was leveled against a flat surface to ensure a uniform thickness before removing the disc from the syringe.<sup>15</sup> The green-state specimens were removed from the syringe with a scalpel and placed on a refractory platform (Vita Zahnfabrik). All discs were heat-treated in an oven (Vacumat 40; Vita Zahnfabrik) according to the procedure described by the manufacturer. After sintering, the surfaces of the discs were polished with a series of abrasive papers (400, 600, and 1200 grit) using a polishing machine (LaboPol-5; Struers, Copenhagen, Denmark).<sup>21</sup>

Biaxial flexure strength was determined with a ball-on-ring design,<sup>19,25</sup> where each disc was supported on a steel ring (9.86 mm diameter). Load was applied centrally through a spherical ball indenter (5 mm diameter) in a universal test machine (650R; TestResources Inc, Shakopee, Minn) with a crosshead speed of 0.5 mm/min until failure. The maximum strength of

the biaxial flexure test for each disc was calculated according to:<sup>25</sup>

$$\sigma_{\max} = (P/h^2)\{(1+\nu[0.485 \ln(a/h) + 0.52] + 0.48)\}$$

where  $\sigma_{\max}$  is the maximum tensile strength (MPa),  $P$  is the measured load at fracture (N),  $h$  is the thickness of the disc (mm),  $\nu$  is the Poisson's ratio (0.25 for porcelain),<sup>19</sup> and  $a$  is the radius of the supporting ring (mm).

The Weibull distribution was used to calculate fracture probabilities of each group as a function of applied stress. The equation used for the Weibull -parameter distribution function was:<sup>35</sup>

$$P_f = 1 - \exp\{-\int_S [(\sigma/\sigma_0)]^m dS\}$$

Where  $\sigma$  is stress;  $\sigma_0$  is scale parameter or characteristic strength (stress level at which 63.2 % of the specimens failed);  $S$  is the surface under stress; and  $m$  is a dispersion parameter or Weibull modulus related to the slope of the distribution.

Specimens obtained by the different processing methods were characterized in terms of chemical composition, powder/liquid ratio, fractography, crystallinity and porosity. These analyses were performed for the commercial raw powder, green-state and sintered discs. To quantify the relative humidity after de-molding, 5 green-state discs per group were tested at 180° C using a thermal infrared moisture balance (Eurotherm, Gibertini Elettronica; Milano, Italy), which has an automatic function to determine the stable weight (DSW). The DSW value is defined when the variation in the weight is lower than 0.01 mg for 9 minutes.

Compositional analysis of the raw powders was accomplished using x-ray fluorescence (PW2404 X-ray Spectrometer; PANalytical B.V., Almelo, The Netherlands) and atomic absorption spectroscopy (Solar 929 AA Spectrometer; ATI Unicam, Cambridge, UK). For Fourier transformed infrared (FT-IR) analysis, fractured discs were evaluated using a spectrometer (System 2000; PerkinElmer, Wellesley, Mass)<sup>12,36,37</sup> with an attenuated total reflectance accessory

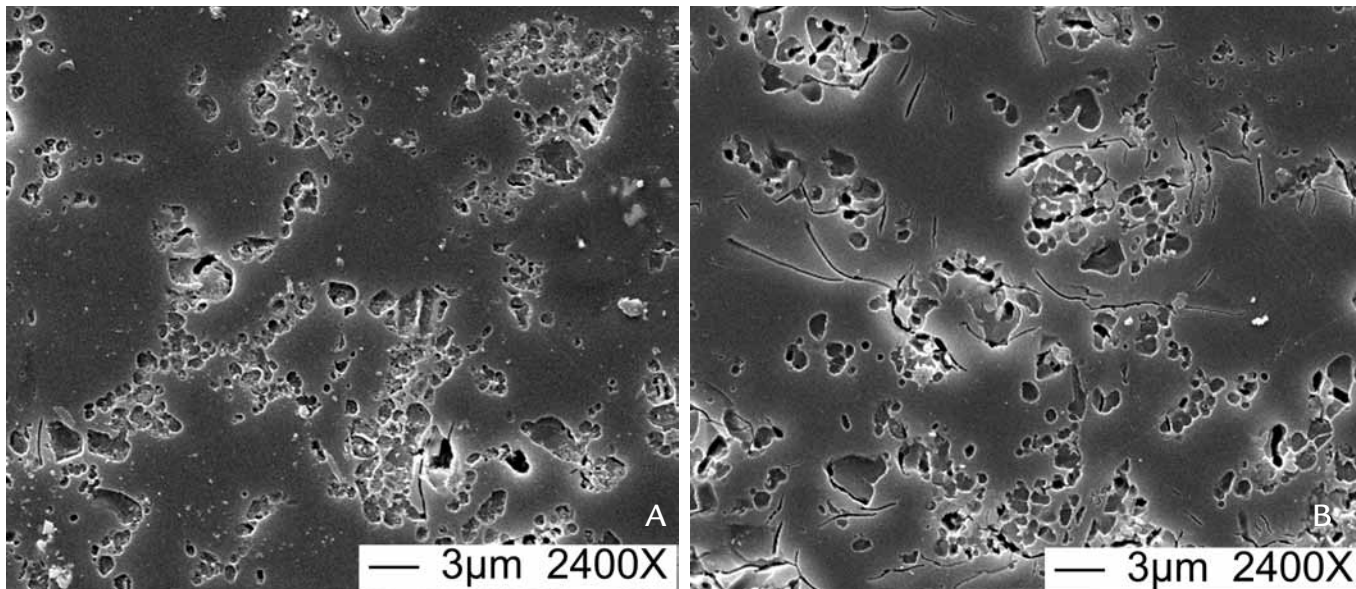
(Golden Gate Single Reflection Diamond ATR; Specac, Smyrna, Ga). For the FT-IR characteristic spectrum of both groups, 3 discs fractured under biaxial flexural test were selected from the tenth percentile where the fracture was obtained at lowest strain. In each disc, at least 3 spectra were obtained at different areas (each spectrum is the average of 100 scans between 400 cm<sup>-1</sup> to 4000 cm<sup>-1</sup> with 4cm<sup>-1</sup> resolution). Baseline correction and mean spectrum were then calculated using numerical software (Matlab, Version R2008b; Mathworks Inc, Natick, Mass).

Two different types of surfaces, fractured and polished, (both etched with 2% HF hydrofluoric acid)<sup>11</sup> of 3 discs (within the tenth lowest percentile strength) of both groups were examined using scanning electron microscopy (SEM) and energy dispersive spectroscopy (EDS) microprobe (JEOL JSM-6301F, Tokyo, Japan). X-ray diffraction (XRD) was used to identify the crystalline phases and detect the presence of amorphous phases in specimens using the 2-angle range between 5 and 85 degrees with a scan speed of 0.02 degrees/s (X'Pert PRO alpha-1, PANalytical B.V., Almelo, The Netherlands), using a diffracted x-ray detector (RTMS X' Celerator; PANalytical B.V.) The XRD characteristic spectrum was obtained from the mean of 3 discs per group in the tenth lowest percentile, using dedicated software (High Score Plus XRD; Version 2.2, PANalytical B.V.). The detected peaks were matched using the crystallographic database of International Centre for Diffraction Data (ICDD) in the Powder Diffraction File (PDF, 2004).<sup>14,38</sup> Porosity volume was calculated following the determination of the apparent density based on the Archimedes water displacement method.<sup>39</sup>

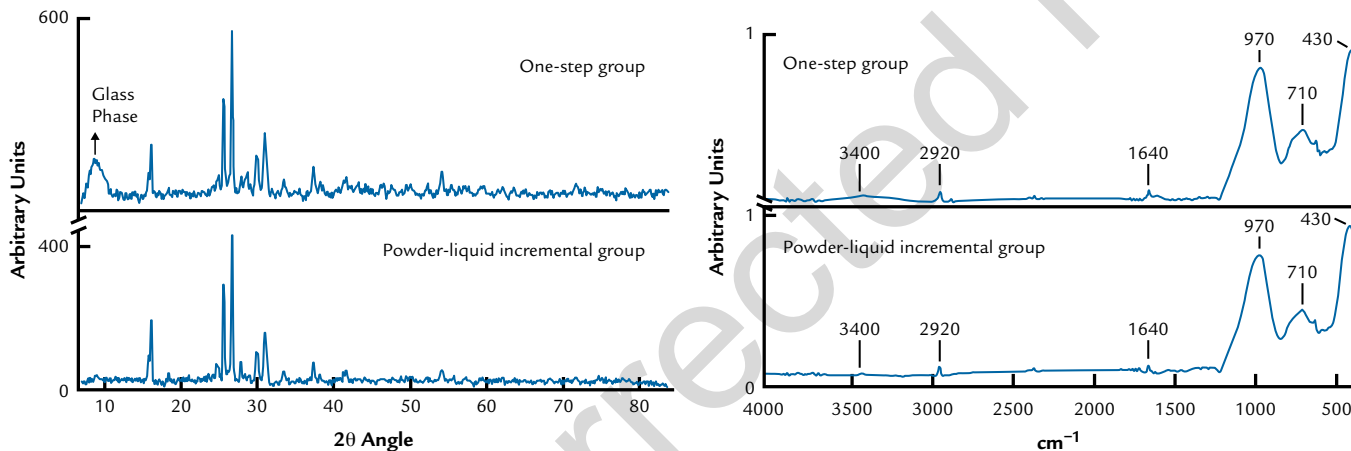
Statistical analysis was conducted using a descriptive approach based in the maximum and minimum values of calculated biaxial flexural strength. The Kolmogorov-Smirnov (KS) test was applied to determine if

[Q1]

200	255	310
201	256	311
202	257	312
203	258	313
204	259	314
205	260	315
206	261	316
207	262	317
208	263	318
209	264	319
210	265	320
211	266	321
212	267	322
213	268	323
214	269	324
215	270	325
216	271	326
217	272	327
218	273	328
219	274	329
220	275	330
221	276	331
222	277	332
223	278	333
224	279	334
225	280	335
226	281	336
227	282	337
228	283	338
229	284	339
230	285	340
231	286	341
232	287	342
233	288	343
234	289	344
235	290	345
236	291	346
237	292	347
238	293	348
239	294	349
240	295	350
241	296	351
242	297	352
243	298	353
244	299	354
245	300	355
246	301	356
247	302	357
248	303	358
249	304	359
250	305	360
251	306	361
252	307	362
253	308	363
254	309	364



**1** Characteristic SEM images of specimens polished and HF 2% treated. A, Powder-liquid incremental and B, one-step mixing groups (x2400).



**2** X-ray diffraction spectra of sintered dental porcelain discs produced by 2 different mixing methods: a) one-step group and b) powder-liquid incremental group.

**3** Fourier transformed infrared attenuated reflectance spectra (absorbance mode) of sintered dental porcelain discs produced by 2 different mixing methods.

the Weibull model was an adequate distribution for the experimental data obtained for both groups. The estimation of the Weibull parameters ( $m$ ,  $\sigma_0$ ) was calculated by the maximum likelihood method using statistical software (R, v2.11.1, R Foundation for Statistical Computing, Vienna, Austria).<sup>40-42</sup> Weibull modulus, characteristic strength, relative humidity and porosity values were compared using 2-tailed Student's t-test or Mann-Whitney test, depending on the evaluated normality of distribution according to KS test. All comparisons were conducted at  $\alpha = .05$ .

## RESULTS

Descriptive statistical analysis showed that mean (SD) biaxial strength values were 74.61 (12.71) MPa for the powder-liquid incremental mixture group and 69.72 (16.35) MPa for the one-step group. To test that the experimental data fit a Weibull distribution, the data were compared with a theoretical distribution and both groups showed no statistically significant deviations from the theoretical distributions  $P = .528$  for one step process and  $P = .685$  for incremental process), confirming that the data could be modeled as a Weibull distribution

The Weibull moduli (SD) obtained were relatively low but the values for the powder-liquid incremental mixing group (6.74 (0.70)) were significantly higher ( $P < .001$ ) than those obtained for the one-step mixing group (4.94 (0.94)). In addition, the characteristic strength (SD) values found were also significantly higher ( $P < .001$ ) for the powder-liquid incremental mixing group (79.87 (2.01)) MPa than for the one-step mixing group (75.95 (2.61)) MPa).

The results of chemical analysis by x-ray fluorescence confirmed that the raw porcelain powder has the typical composition of conventional den-

tal porcelains, that is 60% SiO<sub>2</sub>; 15% Al<sub>2</sub>O<sub>3</sub>; 8% K<sub>2</sub>O and 6% Na<sub>2</sub>O, with smaller amounts of other oxides such as CaO, TiO<sub>2</sub>, MgO, SnO<sub>2</sub>, BaO and LiO<sub>2</sub> that were confirmed by atomic absorption spectroscopy. Significantly higher ( $P=0.009$ ) mean (SD) values of the relative humidity in green-state discs after demold were found for the one-step group (22 (1 %)) compared to the powder-liquid incremental mixing group (20 (0.5 %)).

No obvious morphological differences were observed in the SEM analysis between fractured discs derived from both preparation methods. In the evaluation of the polished sections (Fig. 1), a small qualitative difference was noticed in the porosity. However, no significant differences ( $P=0.916$ ) were found in the porosity volume test (full data not shown) between both experimental groups.

Figure 2 shows that XRD characteristic spectrum for both groups exhibited the same diffraction pattern of the crystalline phase (identified as cubic Leucite). In addition, a larger amount of amorphous phase was detected in discs produced by one-step mixing. Figure 3 shows a comparison of the FTIR attenuated reflectance spectra for powder-liquid incremental and one-step mixing groups. IR absorption bands with peaks at 455, 703, 1027, 1455, 1620, 2926 cm<sup>-1</sup>; as well as a broad absorption band from 3150 to 3650 cm<sup>-1</sup>, were observed for both groups.

## DISCUSSION

The research hypothesis that significant differences would be found between the Weibull parameters calculated from biaxial flexural strength of discs produced by 2 different slurry preparation methods was accepted, since the powder-liquid incremental method resulted in significantly higher Weibull modulus and characteristic strength compared to the one-step technique. The higher Weibull modulus obtained by the powder-liquid incremental method indicates a lower

variability of strength values in this group and consequently higher reliability of the structures produced by this technique. The higher characteristic strength obtained for the incremental group indicates that higher stress levels are necessary to fracture 63.2% of the specimens produced using this technique.

The better mechanical behavior of the porcelain specimens produced by the powder-liquid incremental technique is most likely due to the fact that this method results in a lower amount of pores in the porcelain structure compared to the one-step method. The relative humidity analysis showed that higher amounts of liquid were found in the green-state discs of the one-step group. Therefore, it is clear that when water is added in a single step to the porcelain powder, larger amounts of liquid are retained in the spaces between the powder particles. As a consequence, higher porosity is expected due to the larger amount of space between powder particles following the evaporation of the water, reducing the efficacy of the viscous flow sintering process and resulting in higher porosity levels.<sup>23,25</sup>

The porosity level may not be the sole factor affecting the flexural strength of dental ceramics, since a previous study<sup>39</sup> showed that glass-ceramics with significantly higher porosity (due to processing at higher temperatures) possessed statistically similar flexural strengths to glass-ceramics with lower porosities. It is important to consider that the flexural strength of brittle materials is determined by the flaw population of the tested material, and therefore, the present study showed that the one-step technique produced in a less favorable flaw population resulted in decreased mechanical behavior.

Another possible explanation for better mechanical behavior of specimens produced by the incremental group is the lower amount of amorphous phase in these specimens, as shown in the XRD analysis. The amorphous phase has been shown to

be the weakest part of dental porcelains, since they are more susceptible to water-assisted degradation.<sup>36</sup> Also, a low amount of amorphous phase indicates that other phases are more abundant, such as the leucite phase, which can increase the fracture toughness of dental porcelains by the crack deflection toughening mechanism.<sup>11</sup> It is not obvious how the water content of the green-state specimen affects the phase distribution in the final material. The sintering of dental porcelain within the furnace is a complex viscous flow process and the crystallization of leucite within the glassy matrix is governed by many factors such as temperature, heating rate, and powder characteristics.<sup>38</sup> After sintering, FT-IR spectroscopy was used to evaluate the presence of hydroxyl and molecular water in the bulk discs, since their presence has been associated with a increased relaxation of the glass structure.<sup>26</sup> A broad band with a peak at 3400 cm<sup>-1</sup> appeared higher in the one-step group compared to the incremental group, which might be interpreted as a higher level of hydroxyl water. However, further studies are necessary to confirm this trend and to understand how excess water may affect the crystalline content of these materials. Other IR absorption peaks and bands showed comparable results for discs from both mixture techniques evaluated. They were determined to correspond to H-O-H bonds (1640 cm<sup>-1</sup>),<sup>12,36</sup> Si-O-Si bonds (710 cm<sup>-1</sup>, the bringing vibration of oxygen)<sup>12,36</sup> within the glass network, O-Al-O bonds (430 cm<sup>-1</sup> corresponds to vibration of oxygen),<sup>37</sup> Si-O- associated with alkaline ions, such as Na<sup>+</sup>, K<sup>+</sup> and Ca<sup>2+</sup> in the glass network (a broad peak from 760 to 970 cm<sup>-1</sup> results from the combined vibrations of non-bridging oxygen),<sup>37</sup> and O-C-O bonds (2920 cm<sup>-1</sup> corresponds to vibration of oxygen), a group normally observed in this technique.

Authors of another study<sup>19</sup> that used a different methodology to vary the amount of water added to the porcelain powder presented results

453	508	563
454	509	564
455	510	565
456	511	566
457	512	567
458	513	568
459	514	569
460	515	570
461	516	571
462	517	572
463	518	573
464	519	574
465	520	575
466	521	576
467	522	577
468	523	578
469	524	579
470	525	580
471	526	581
472	527	582
473	528	583
474	529	584
475	530	585
476	531	586
477	532	587
478	533	588
479	534	589
480	535	590
481	536	591
482	537	592
483	538	593
484	539	594
485	540	595
486	541	596
487	542	597
488	543	598
489	544	599
490	545	600
491	546	601
492	547	602
493	548	603
494	549	604
495	550	605
496	551	606
497	552	607
498	553	608
499	554	609
500	555	610
501	556	611
502	557	612
503	558	613
504	559	614
505	560	615
506	561	616
507	562	617

[Q2]

[Q3]

that are in agreement with this study, since it was demonstrated that feldspathic porcelain (Vitadur-Alpha) had its Weibull modulus reduced when a higher amount of water than an optimal powder-liquid ratio of 2.8 was added to the porcelain powders. The same authors<sup>25</sup> studied aluminous porcelain (Vitadur-N) and found that deviating from an optimal powder-liquid ratio (either higher or lower) resulted in a decreased Weibull modulus. These authors indicated that it is important to produce porcelains with relatively low apparent porosity to reduce the amount of shrinkage on firing, and as a consequence, improve the marginal fit of porcelain in practice.

In the present study, the powder/liquid ratio for specimen preparation was selected according to other reports so that one-step mixing group results could be compared with those from other studies.<sup>15,19</sup> Absorbent paper towels were used to remove excess water in the ceramic paste for both groups.<sup>34</sup> Removal of the liquid with an absorbent tissue allows the particles to move closer together under the action of the surface tension of the liquid.<sup>19</sup> Such powder condensation aims at achieving the maximum packing density for the powder, and light vibration techniques are used to reorient the powder particles into a position of maximum packing efficiency by eliminating as much excess liquid as possible.<sup>19,25</sup> However, this procedure also added a further variability in the preparation of green-state discs. Another aspect related with specimen preparation in the present study is that the discs were polished and not glazed to better control the final disc thickness and to reduce the complexity of the studied model; however, this procedure probably exposed pores and increased surface roughness.<sup>32</sup>

The results of the present study are clinically relevant because they showed that dental technicians should be encouraged to use the powder-liquid incremental technique presented for the production of ceramic

prostheses with higher structural homogeneity and better mechanical properties. However, some limitations of the present work should be considered, such as the use of only one commercial porcelain powder, as different results may be obtained with different porcelains or ceramic compositions. Also, the number of specimens could have been increased to improve the power of the characterization by high resolution techniques. Finally, direct extrapolation to the clinical situation should be carefully considered as this study did not investigate other factors present in the oral cavity such as pH variations, thermal cycling or occlusal forces.

## CONCLUSIONS

Considering the limitations of this *in vitro* study, the results showed that the incremental technique for the preparation of porcelain slurry resulted in lower water content in the green-state specimens, and compared to the one-step technique, produced significant improvements in both the Weibull modulus and characteristic strength of the porcelain tested. Microstructural analyses showed that observed improvements in the mechanical properties of the specimens prepared by the incremental technique may be related to decreased porosity and increased crystalline content.

## REFERENCES

1. The Glossary of Prosthodontic Terms. *J Prosthet Dent* 2005;94:10-92.
2. ISO 6872: Dentistry--ceramic materials. Geneva, Switzerland: International Organization for Standards (2008).
3. Sadowsky SJ. An overview of treatment considerations for esthetic restorations: a review of the literature. *J Prosthet Dent* 2006;96:433-42.
4. Messer RL, Lockwood PE, Wataha JC, Lewis JB, Norris S, Bouillaguet S. *In vitro* cytotoxicity of traditional versus contemporary dental ceramics. *J Prosthet Dent* 2003;90:452-8.
5. Oh WS, DeLong R, and Anusavice KJ. Factors affecting enamel and ceramic wear: a literature review. *J Prosthet Dent* 2002;87:451-9.

6. Schuh C, Kinast EJ, Mezzomo E, Kapczynski MP. Effect of glazed and polished surface finishes on the friction coefficient of two low-fusing ceramics. *J Prosthet Dent* 2005;93:245-52. 618 673 728
- 619 674 729
- 620 675 730
- 621 676 731
- 622 677 732
- 623 678 733
- 624 679 734
- 625 680 735
- 626 681 736
- 627 682 737
- 628 683 738
- 629 684 739
- 630 685 740
- 631 686 741
- 632 687 742
- 633 688 743
- 634 689 744
- 635 690 745
- 636 691 746
- 637 692 747
- 638 693 748
- 639 694 749
- 640 695 750
- 641 696 751
- 642 697 752
- 643 698 753
- 644 699 754
- 645 700 755
- 646 701 756
- 647 702 757
- 648 703 758
- 649 704 759
- 650 705 760
- 651 706 761
- 652 707 762
- 653 708 763
- 654 709 764
- 655 710 765
- 656 711 766
- 657 712 767
- 658 713 768
- 659 714 769
- 660 715 770
- 661 716 771
- 662 717 772
- 663 718 773
- 664 719 774
- 665 720 775
- 666 721 776
- 667 722 777
- 668 723 778
- 669 724 779
- 670 725 780
- 671 726 781
- 672 727 782

25. Fleming GJP, Shelton RM, Marquis PM. The influence of clinically induced variability on the bi-axial fracture strength of aluminous core porcelain discs. *J Dent* 1999;27:587-94.
26. Tomozawa M, Han W-T, Lanford WA. Water entry into Silica Glass during Slow Crack Growth. *J Am Ceram Soc* 1991;74:2573-6.
27. Ray CS, Day DE. Identifying internal and surface crystallization by differential thermal analysis for the glass-to-crystal transformations. *Thermochim Acta* 1996;280-281:163-74.
28. Mackert JR Jr, Williams AL, Ergle JW, Russell CM. Water-enhanced crystallization of leucite in dental porcelain. *Dent Mater* 2000;16:426-31.
29. Burgner LL, Weinberg MC. An assessment of crystal growth behavior in lithium disilicate glass. *J. Non-Cryst Solids* 2001;279:28-43.
30. Deubener J, Muller R, Behrens H, Heide G. Water and the glass transition temperature of silicate melts. *J. Non-Cryst Solids* 2003;330:268-73.
31. Seghi RR, Daher T, Caputo A. Relative flexural strength of dental restorative ceramics. *Dent Mater* 1990;6:181-4.
32. Quinn JB, Quinn GD. A practical and systematic review of Weibull statistics for reporting strengths of dental materials. *Dent Mater* 2010;26:135-47.
33. Ritter JE. Critique of test methods for lifetime predictions. *Dent Mater* 1995;11:147-51.
34. Giordano RA, Pelletier L, Campbell S, Pober R. Flexural strength of an infused ceramic, glass ceramic, and feldspathic porcelain. *J Prosthet Dent* 1995;73:411-8.
35. Kelly JR. Perspectives on strength. *Dent Mater* 1995;11:103-10.
36. Griggs JA, Wataha JC, Kishen A. Effect of hydrolyzed surface layer on the cytotoxicity and chemical resistance of a low fusing porcelain. *Dent Mater* 2003;19:353-8.
37. Bertolini MJ, Zaghete MA, Gimenes R, Freitas de Souza R, Vaz LG. Preparation of new glass systems by the polymeric precursor method for dental applications. *J Non-Cryst Solids* 2004;344:170-5.
38. Tsetsekou A, Papadopoulos T, Adamopoulos O. Microstructure effect on the properties of a commercial low-fusing dental porcelain. *J Mater Sci Mater Med* 2002;13:407-16.
39. Gonzaga CC, Cesar PF, Okada CY, Fredericci C, Beneduce-Neto FV, Yoshimura HN. Mechanical properties and porosity of dental glass-ceramics hot-pressed at different temperatures. *Mater Res* 2008;11:301-306.
40. Pelaez A, Garcia C, Correa JC, Abad P. Reliability Weibull analysis for structural evaluation of bioactive films obtained by sol-gel process. *Key Eng Mater* 2004;254-6:431-4.
41. Pham H. Springer Handbook of engineering statistics. 1st ed. London: Springer; 2006. p. 97-102.
42. Ritter JE. Predicting lifetimes of materials and material structures. *Dent Mater* 1995;11:142-6.



#### Corresponding author:

Institute of Biomedical Engineering  
Rua do Campo Alegre, 283  
4150-180 Porto  
PORTUGAL  
Fax: 351-226094567  
E-mail: alejopv@ineb.up.pt

#### Acknowledgments

The authors thank Professor Paulo F. Cesar (University of Sao Paulo), Dr. Nicholas Ferrell (Cleveland Clinic), and Professor Derek Hansford (The Ohio State University) for helpful discussion.

Copyright © 2010 by the Editorial Council for  
*The Journal of Prosthetic Dentistry.*

783	806	829
784	807	830
785	808	831
786	809	832
787	810	833
788	811	834
789	812	835
790	813	836
791	814	837
792	815	838
793	816	839
794	817	840
795	818	841
796	819	842
797	820	843
798	821	844
799	822	845
800	823	846
801	824	847
802	825	848
803	826	849
804	827	850
805	828	851