

Spring 3-15-1985

The Hollow Crown (1985)

San Jose State University, Theatre Arts

Follow this and additional works at: http://scholarworks.sjsu.edu/productions_1980s



Part of the [Theatre and Performance Studies Commons](#)

Recommended Citation

San Jose State University, Theatre Arts, "The Hollow Crown (1985)" (1985). *Productions 1980-1989*. Book 49.
http://scholarworks.sjsu.edu/productions_1980s/49

This Book is brought to you for free and open access by the Theatre Productions at SJSU ScholarWorks. It has been accepted for inclusion in Productions 1980-1989 by an authorized administrator of SJSU ScholarWorks. For more information, please contact scholarworks@sjsu.edu.



SAN JOSE STATE UNIVERSITY THEATRE

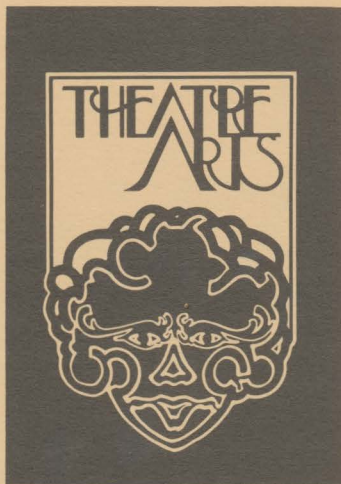
Presents

THE HOLLOW CROWN

*The Fall and Foibles of the
Kings and Queens of England*

Devised by JOHN BARTON

March 15, 16, 20, 21, 22, 23, 1985



WELCOME!! The San Jose State University Theatre Art Department is proud to present *The Hollow Crown*. We thank you for attending and for sharing with us this experience in live theatre. We invite you to join us in the pursuit of education toward careers in professional theatre. If you would like to become one of our patrons, you may do so by sending your tax deductible donation to the Theatre Arts Department or by giving it to one of our staff in the Box Office. You may also become a patron by donating your professional services and/or energies to our program. Our continued growth as a vital element in the artistic life of this community depends on the generosity of our honored patrons and friends. Again, welcome. Please, sit back, relax, and enjoy the show.

Make Checks Payable To: Theatre Arts Department
 Contact Or Mail To: Mina Garman, Chair
 Theatre Arts Department
 San Jose State University
 San Jose, CA 95192

PATRONS and FRIENDS

Jerry Allen*	LTC and Mrs. Frank Holt	Dr. Ralph Parkman
Elmer Arveson	Nicolai Heino	Dorie Pelka*
Gary Bailey	Catherine Hogan	C.O. Pendleton
Robert and Sharon Bailey	A.J. Kilfoil*	Pat Pierson
E.T. Briggs	Mrs. Joan Lamb	Richard Ragain*
Joseph Campagna	Norman Larveire	Hank Rosendin*
Ralph Carmichael	Lawrence B. Lee	R.B. Steele
Jeffra Cook	Margaret E. Lopez	Sherwood Sullivan*
M.Y. Crosby	Dr. Morrison	Dan and Audrey Unruh
Fred Fraboni*	Ed Mosher*	Dr. Douglas Wendt
David T. Gibson*	Paul Myrvold	Stanley Waldorf
June N. Freitas	John Neptune	Marcy E. West
Mr. and Mrs. Willard H. Harden	Joe O'Kane*	Sylvan A. Wetmore
	Chris Panopulos*	

*Denotes AUTA board members

FOR YOUR INFORMATION

Box Office: The University Theatre's box office is located at 5th and San Fernando. Box office hours begin the Monday before the opening night of a production. Monday thru Friday 1:00-5:00, Performance nights 6:00-8:30.

Tickets: Call (408) 277-2777 during the box office hours and charge your tickets to Visa or MasterCard.

Special group rates are available for groups of 20 or more.

Notices: Please observe the no-smoking regulations. The use of cameras or tape recorders is not permitted. If you carry a beeper, watch, or calculator with an alarm, please make sure that it is set to the "OFF" position while you are in the theatre to prevent interruption in the performance.

Late Arrival: In response to numerous requests, latecomers will not be seated until a suitable break in the performance.

Guest Book: Sign up on our mailing list in the lobby and receive advance notice of SJSU Theatre Arts events! Please note there is space provided for your suggestions and comments.

THANK YOU FOR YOUR PATRONAGE. ENJOY THE PERFORMANCE!

ABOUT THE PLAY . . .

This play was first produced by the Old Vic Company in London in 1961. Its first cast included: Max Adrian, John Barton, Richard Johnson, and Dorothy Tutlin. Last year when the Theatre Arts production committee decided to select a play which would showcase the talents of our new Master of Fine Arts candidates *The Hollow Crown* was chosen. The assistant director and all the members of the cast, save one, are first year MFA students in either the acting or directing programs.

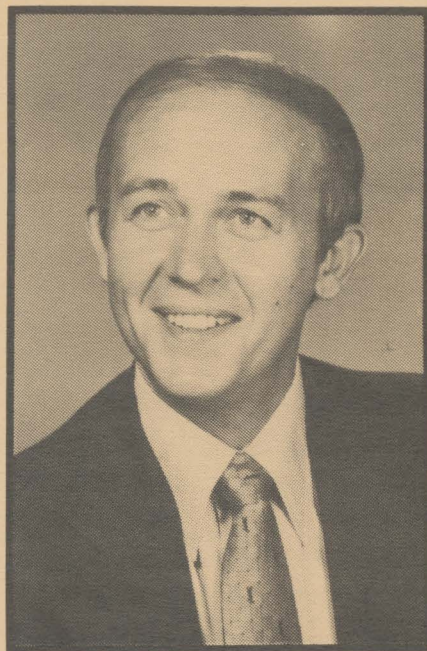
In addition to these performances given on our main stage, we will tour the production to various high schools and junior colleges in the Bay Area, as well as perform it for Arts Education Week in April.

While we have kept the basic thrust of the original text intact, we have added various scenes from Shakespeare, Congreve, and others to fill out the original intention and to provide further acting opportunities for our performers.

We hope you enjoy our sometimes humorous, sometimes serious look into the lives of the British monarchs from the Norman Conquest in 1066 to the close of the Victorian Age in 1901.

ABOUT THE DIRECTOR . . .

Since joining our faculty in 1965, Richard D. Parks' directing assignments have ranged from Racine's *Phedre* to *My Fair Lady*, from *Measure For Measure* to *Born Yesterday*. Considered a theatre generalist, Parks is happiest teaching a wide range of subjects (some forty-five to date) and directing in a variety of genres and styles. Parks received his Bachelors degree from SJSU, and some of our longtime patrons may remember him as "Volpone" or "Peter Pan" in the early '60's. He went on to win acting awards at the University of Washington and Stanford University. He has appeared in SJSU Summer season production such as *The Imaginary Invalid* and *The Miser*. In addition to his primary duties as teacher, Chairperson of the Performance area and Coordinator of the MFA Performance program, Parks is a published playwright and author, producer with the National Broadcasting Company, and the Executive Director of Actors Symposium of Hollywood.





CAST

(seated from left to right)

KAREN WILSON

MATT GORDON

KATHLEEN WOODS

MICHAEL F. DANNER

JEANNE RUSS

KURT MEEKER

ASSISTANT DIRECTOR

JEFF RICHARDS

LIGHTING DIRECTOR

KENNETH R. DORST

SCENIC DESIGNER

DONAMARIE REEDS

RECORDED SOUND DESIGNER

JOHN CUNNINGHAM

COSTUME AND MAKEUP DESIGNERS

RHONDA W. ROPER

& AUDREY M. WALKER

PART ONE

KINGS ACCORDING TO LEGEND AND THE CHRONICLERS

PROLOGUE

The Hollow Crown (William Shakespeare)

The Death of Kings

(From Stow and the Anglo-Saxon Chronicle)

William I William II Henry I Stephen

Song – *World's Bliss*

16th and 17th Century Chroniclers
(Holinshed, Hall, Baker and Churchill)

on

HENRY II	HENRY III	RICHARD I
EDWARD I	JOHN	EDWARD II

EDWARD III writes a love-letter to the Countess of Salisbury.

From Froissart's Chronicles (Lord Berners)

RICHARD II surrenders at Flint castle to HENRY IV

Richard II (William Shakespeare)

"A Partial, Prejudiced and Ignorant Historian"

(Jane Austen, aged fifteen)

on

HENRY IV	EDWARD V	EDWARD VI
HENRY V	RICHARD III	MARY
HENRY VI	HENRY VII	ELIZABETH
EDWARD IV	HENRY VIII	

HENRY IV's deathbed speech

From *Henry IV*, part ii (William Shakespeare)

Chorus' speech and HENRY V's speech

From *Jerry V* (William Shakespeare)

Richard II (William Shakespeare)

Song – *The King's Hunt*

HENRY VIII proposes to Anne Boleyn, a lady in waiting at his court.

ANNE BOLYN writes to HENRY VIII from the Tower before her execution.

MARY speaks about her proposed marriage to Philip of Spain.

LORD CRANMER speaks at ELIZABETH'S baptism
From King Henry VIII (William Shakespeare)

ELIZABETH I speaks about marriage

Song – "Here's a Health unto her Majesty"

PART TWO

The Stuarts

JAMES I on the state of monarchy

CHARLES I confronts JOHN BRADSHAW, President of the court, at his trial for high treason
and is condemned to death

CHARLES II; on his marriage (from a speech to Parliament and two letters to the Lord Chancellor)

A scene from Congreve's *Way of the World*

CHARLES II is anatomised by his ministers

The Vicar of Bray

on

CHARLES II WILLIAM AND MARY

JAMES II ANNE

GEORGE I

The Illustrious House of Hanover

GEORGE II is buried in Westminster Abbey
(Horace Walpole)

GEORGE III discusses the Arts with the novelist and diarist
(Fanny Burney)

THE REGENCY the madness of GEORGE III
(Fanny Burney writes to her nephew)

GEORGE IV is unswathed and interpreted
(William Thackeray)

WILLIAM IV about his accession
(The Greville Memoirs)

The Victorian Age

VICTORIA describes her Coronation at the age of nineteen
(from her Private Journal, 1838)

VICTORIA speaks about her Diamond Jubilee, 1897

John of Gaunt's speech from *Richard II* (William Shakespeare)

Variations on God Save the King – Beethoven

ABOUT THE CAST . . .

KAREN WILSON comes to us from Dominican College of San Rafael, where she received her BA in Theatre Arts. Before joining the MFA program in acting, Karen worked in The Dominican College Theatre, the Drama Studio London at Berkeley and at Hayward State University in such productions as *Bye Bye Birdie*, *The Prime of Miss Jean Brodie*, *A Midsummer Nights Dream*, *Pippin*, and played Petruchio in a role-reversed *Taming of the Shrew*. It was as a 1984 URTA Acting finalist that Karen came to SJSU. Since her arrival she has acted in *Antigone*, *Definitely Eric Geddis* and *Peck's Bad Girls*. Watch for her in *Cabaret!* Since Karen enjoys working with children and teens, she teaches and directs for the San Rafael Junior Theatre Summer Workshop Program. Last summer she directed an original children's musical production of *Beauty and the Beast*. When Karen does find a moment of free time, she enjoys drawing, pistachios and crossword puzzles.

MATT GORDON, an MFA student in acting, received his BA from Western Washington University where he acted in such productions as *The Real Inspector Hound*, *The Rope*, and *A Streetcar Named Desire*. Matt was nominated for the ACTF Irene Ryan Acting Award for his performance as Stanley Kowalski in *A Streetcar Named Desire*. Since arriving at SJSU Matt has acted in *Terra Nova*, *Definitely Eric Geddis* and *Edmond* and has stage managed *Antigone*. Along with acting and taking classes, Matt is currently teaching an Oral Expression course. Continuing his busy schedule through the summer, Matt will be working as an actor in the San Jose Repertory Company's production of *Amadeus*.

KATHLEEN WOODS is currently working to attain her MFA in Directing. She received her BA in Dramatic Arts from Agnes Scott College in Atlanta, Georgia, where she participated in every phase of theatre work. In all, Kathleen has directed over thirty productions including *The Glass Menagerie*, *David and Lisa*, *The Music Man*, and a recent SJSU production of *The Author of the Iliad is Either Homer, or, if not Homer, Somebody Else of the Same Name*. Since her arrival she has also acted in *Antigone*, directed the staged reading of *Whenever She Heard Offenbach's Barcarole* and worked as the assistant director of *Peck's Bad Girls*. Kathleen plans to teach and direct at the college level. She enjoys traveling and, while she has already visited over forty states, plans to continue, hoping to add Europe to her list for pleasure, work, and study.

MICHAEL F. DANNER comes to SJSU from Kent State University, where he received a BEA in Acting/Directing and appeared in such productions as *Macbeth*, *Man of La Mancha*, *Our Town*, *Elephant Man*, and the world premiere of *No Language But A Cry*. While at Kent State he also directed productions of *Sore Throats*, *Of Mice and Men*, and *Dead End Street*. Since joining

the MFA program in acting, Michael has been seen in *Terra Nova*, *Antigone*, *Edmond*, and a Studio Hour production of *Damnsk Drum*. Michael enjoys working with stage lighting. He created the lighting design for three productions in Ohio and has been a master electrician for many others. While teaching may be in the future, Michael also plans to persue a career working in film, on stage or for TV. This summer he will be appearing in San Jose Repertory Company's production of *Amadeus*.

JEANNE RUSS received her BA in Theatre Arts here at SJSU. She has studied theatre at UCLA and the Jean Shelton School in Berkeley and now, after teaching Drama, Speech and Movement for three years, she has returned to SJSU to persue an MFA degree in directing. This year Jeanne has been seen in the title role of *Antigone*, has directed *Definitely Eric Geddis* and is presently working as a Scene Shop Assistant. Her previous credits include directing *No Place To Be Somebody* at San Jose's Montgomery Theatre, stage managing *Good News* at the LA Variety Arts Theatre, producing *Faust – A Rock Opera* for UCLA, and acting in *Lysistrata* and the world premiere of *Simple Gifts*. Jeanne's summer will be spent teaching summer school and acting as Teresa Salieri in the San Jose Repertory Company's production of *Amadeus*.

KURT MEEKER is presently a junior, working toward his BA in Theatre Arts. This year he has appeared in *Terra Nova* and *The Author of the Iliad is Either Homer, or, if not Homer, Somebody Else of the Same Name*. His previous projects include acting in such stage productions as *The Music Man*, *Cabaret*, *A Christmas Carol*, and *One Flew Over The Cuckoo's Nest* and appearing in a commercial for the Boardwalk. He has also been seen in the films *The Ugly Duckling* with Ray Bolger and *Sudden Impact* with Clint Eastwood. Kurt plans to continue in theatre, hoping for a career in film, TV, stage, or acting. Kurt considers himself a strong advocate for the return of professional hockey to the Bay Area.

JEFF RICHARDS, the assistant director of *The Hollow Crown*, is persuing an MFA in Directing. Jeff received a BFA in Directing and Acting from the University of Evansville in Evansville, Indiana. While in Indiana Jeff directed several shows for the University and local theatre companies such as *The Old Jew*, *Beauty and the Beast*, *Hair* and *Jesus Christ Superstar*. Jeff also established the Rockford Summer Theatre and directed shows there including *You're A Good Man, Charlie Brown*, before moving to California. Again Jeff directed for local theatres, this time in LA and Hollywood, and he established the Sunset Studio West. His California directing projects have included *The Indian Wants the Bronx*, *The Rimers of Eldrich*, *Broadway Cabaret* and *Hair* (which, according to the reviews, was the best received production of *Hair* in LA). Since joining the MFA program, Jeff has acted in *Terra Nova* and *Antigone* and has directed *Edmond*. However, his favorite role is that of brand-new father to his son Nick!

Master of Fine Arts Degree in Theatre Arts.

The MFA degree is offered for students with aptitudes and orientation for professional theatre training in the areas of Performance (acting, directing) or Scenography (scene, costume, lighting design, technical direction). The objective of the program is to deliver the skills, capacity, and understanding of the art and craft of theatre in highly motivated students as preparation for professional careers in theatre (including musical theatre, film, and television). After a thorough audition process, select students are invited to join the MFA program here at SJSU. Only those students who demonstrate exceptional talent, motivation, and commitment to their training are admitted and retained in the program.

The Master of Fine Arts degree calls for a total of 60 units, as opposed to the 30 units required for a Master of Arts degree. The extra units are found in such classes as Visiting Arts Symposia, Performance or Scenography Colloquim, Performance or Technical Workshop, Activity Projects, Literature, Performance or Scenography Electives, and a final MPA Project. The highest academic and creative standards and a positive attitude toward Theatre discipline are demanded throughout the program.

ABOUT THE TOUR . . .

The Hollow Crown marks the first MFA Showcase Production at SJSU. In order to promote Theatre Arts and its programs at SJSU, *The Hollow Crown* will tour to several local high schools and community colleges from March 25-29 and April 8-12. At the conclusion of the tour, the cast will perform in the university theatre for "Arts Education Week." We hope this tour will encourage aspiring performers to enter the performing arts.

Gregory S. Refrig, the Stage Manager and Tour Coordinator for *The Hollow Crown*, is a second semester theatre major. Last year Greg was seen in SJSU's *Country Wife*. This year he has been busy as the Assistant Stage Manager for *The Male Animal* and as an actor in *Salve Regina* and a Studio Hour's production of scenes from *The Real Thing*. Greg hopes to continue working in the theatre after graduation. Between classes and rehearsals Greg is a counselor at Juvenile Hall. While the kids he works with may not know it, Greg enjoys spending his free time as a ventriloquist.

PRODUCTION STAFF

Assistant Director	Jeff Richards
Technical Director	James R. Earle, Jr.
Master of Fine Arts Program Coordinator	Howard Burman
Stage Manager	Gregory S. Rehrig
Assistant Stage Managers	Graeme Finlayson, Melanie Means Giese
Assistant to the Scenic Designer	Christine Tang
Set Construction	Steve Burright, Leo Capovilla, Mark Covington, Martha Crouser, Roy Harline, students of TA 52
Property Crewhead	Graeme Finlayson
Costume and Makeup Design under Supervision of	Elizabeth M. Poindexter
Cutter/Fitter	Rhonda W. Roper, Audrey M. Walker
Costume Construction	Marita Dingus, Betsy Hayman, Sharon Ridge, students of Drama 052
Costume Special Projects	Marita Dingus, Leslie Fitzgerald, Kelsey Harding, Elizabeth Luce, Maureen Phillips
Wardrobe	Sharon Ridge
Incidental Music composed by	Karen Wilson
Research for Slides	Melanie Means Giese, Gregory S. Rehrig
Acknowledgements – Berkeley Shakespeare Festival for publicity props	

THEATRE ARTS DEPARTMENT

PRODUCTION STAFF

Stage Technician/Master Carpenter	Steven Placke
Scene Shop Assistants	Roy Harline, Jeff Richards, Jeanne Russ
Property Coordinator	Cathy Moser
Sound Technician	Robert Koontz
Master Electrician	Jon Krahenbuhl
Lighting Technicians	Carol Couch, Roy Harline
Costume Technician/Costumer	Eliza Chugg
Costume Assistants	Marita Dingus, Leslie Fitzgerald, Rhonda Roper, Audrey Walker
Studio Theatre Technical Director	Robert Koontz

ADMINISTRATIVE STAFF

Publicity Director	Scott Johnson, Rich Stafetas
Publicity Assistant	Melanie Means Giese
Graphic Artist/Designer	Paul Manchester
Photographers	Scott Baker, William Holladay, Paul Vierra
Box Office Manager	Scott Johnson, Christine Tang
Box Office Clerk	James Coulter, John Cunningham, Pamela Depper, Richard Gale, Jeff Richards, Maureen Smidebush, Marcia Trask
House Managers	Pamela Depper, Janice Paxson