

Washington University School of Medicine Digital Commons@Becker

Open Access Publications

2016

Guidance for the use of thrombolytic therapy for the treatment of venous thromboembolism

Suresh Vedantham

Washington University School of Medicine in St. Louis

Gregory Piazza

Harvard Medical School

Akhilesh K. Sista

Weill Cornell Medical College

Neil A. Goldenberg

Johns Hopkins University

Follow this and additional works at: http://digitalcommons.wustl.edu/open_access_pubs

Recommended Citation

Vedantham, Suresh; Piazza, Gregory; Sista, Akhilesh K.; and Goldenberg, Neil A., "Guidance for the use of thrombolytic therapy for the treatment of venous thromboembolism." *Journal of Thrombosis and Thrombolysis*.41,1. 68-80. (2016).
http://digitalcommons.wustl.edu/open_access_pubs/5347

This Open Access Publication is brought to you for free and open access by Digital Commons@Becker. It has been accepted for inclusion in Open Access Publications by an authorized administrator of Digital Commons@Becker. For more information, please contact engeszer@wustl.edu.

Guidance for the use of thrombolytic therapy for the treatment of venous thromboembolism

Suresh Vedantham¹ · Gregory Piazza² · Akhilesh K. Sista³ · Neil A. Goldenberg⁴

Published online: 16 January 2016

© The Author(s) 2016. This article is published with open access at Springerlink.com

Abstract Patients with venous thromboembolism (VTE) are prone to the development of both short-term and long-term complications that can substantially affect their functional capacity and quality of life. Patients with deep vein thrombosis (DVT) often develop recurrent VTE or the post-thrombotic syndrome, whereas patients with pulmonary embolism (PE) can develop long-term symptoms and functional limitations along a broad spectrum extending to full-blown chronic thromboembolic pulmonary hypertension. Clinicians who care for patients showing severe clinical manifestations of DVT and PE are often faced with challenging decisions concerning whether and how to escalate to more aggressive treatments such as those involving the use of thrombolytic drugs. The purpose of this chapter is to provide guidance on how best to individualize care to these patients.

Keywords Venous thromboembolism · Pulmonary embolism · Thrombolytic therapy · Anticoagulants · Direct oral anticoagulants (DOAC) · New oral anticoagulants (NOAC)

Introduction

Venous thromboembolism (VTE), which includes deep vein thrombosis (DVT) and pulmonary embolism (PE), continues to impose a substantial health burden upon patients and society. A recent US population-based study estimated the age- and sex-adjusted annual VTE event rate over the period 1985–2009 to be 142 per 100,000 persons, of which 50 % presented as lower extremity DVT alone, 30 % PE alone, and 20 % DVT and PE [1]. A Pediatric Hospital Information Systems analysis noted that 1 in 200 hospitalized children has an admission or discharge diagnosis code for VTE [2]. In 2008, the US Surgeon General estimated that over 100,000 deaths from PE occur yearly in the US, and named PE as the most preventable cause of death in hospitalized patients [3]. Despite advances in diagnosis and management, in-hospital mortality for acute PE approaches 7 % overall and 32 % in those presenting with hemodynamic instability [4]. Right ventricular (RV) dysfunction and elevations in cardiac troponin correlate with increased risk of in-hospital death and clinical deterioration [5].

Background

Patients with PE or DVT are also prone to the development of long-term complications. First, recurrent VTE events are frequent and constitute approximately 25 % of all VTE events [1]. Patients who suffer unprovoked VTE have a substantial risk of recurrence that exceeds 50 % over 10 years if not treated with extended duration anticoagulation [6]. Even patients who suffer VTE in the setting of reversible provoking factors have a long-term risk of recurrence that exceeds 20 % over 10 years [6]. A recent analysis of the Danish National Registry of Patients

✉ Suresh Vedantham
vedanthams@mir.wustl.edu

¹ Mallinckrodt Institute of Radiology, Washington University School of Medicine, 510 S. Kingshighway, Box 8131, St. Louis, MO 63110, USA

² Harvard Medical School, Boston, MA, USA

³ Weill Cornell Medical College, New York, NY, USA

⁴ Johns Hopkins School of Medicine, St Petersburg, FL, USA

demonstrated that patients with VTE had increased mortality over 30 years of follow-up and that recurrent PE remained an important cause of death throughout this time interval [7].

In addition, within 2 years of DVT diagnosis, approximately 40 % of adult patients with a symptomatic first-episode DVT will develop the post-thrombotic syndrome (PTS) [8]. PTS commonly manifests as chronic limb pain, swelling, heaviness, and/or fatigue, and progresses to stasis dermatitis or limb ulceration in a minority of these patients [8, 9]. PTS also occurs in approximately 25 % of children and adolescents with extremity DVT [10]. Among survivors of PE, many will develop cardiopulmonary dysfunction and/or reduced exercise tolerance, with 4 % developing debilitating chronic thromboembolic pulmonary hypertension (CTEPH) [11].

Clinicians who care for patients showing severe initial clinical manifestations of PE or DVT are frequently faced with difficult decisions concerning whether and how to escalate to more aggressive therapeutics that incorporate the use of thrombolytic drugs to mitigate short-term and long-term risks.

Methods

The goal of this chapter is to provide guidance to providers on how best to individualize care to these patients, with specific focus on the questions listed in Table 1. Questions were developed by consensus from the authors.

To address these questions, the published literature was reviewed by searching electronic databases (PubMed, Medline) and the authors' personal libraries, with a focus on high quality cohort studies and randomized controlled trials (RCTs) published in the last 10 years, when available. The authors' consensus interpretation of these studies, in the context of the realities of VTE care, was distilled into the practical recommendations that are presented in this article.

Guidance

(1) What are the goals of thrombolytic therapy?

Thrombolytic therapy for acute PE functions as a "medical embolectomy" with the goals of reducing thromboembolic burden, pulmonary vascular resistance, and right ventricular dysfunction, and more rapidly restoring pulmonary capillary blood flow and effective gas exchange than anticoagulation alone (Table 2) [12–15]. In this manner, thrombolytic therapy may reduce mortality in patients with massive [16] and submassive PE [17], help prevent the development of CTEPH [18, 19] and preserve the normal hemodynamic response to exercise [20]. Thrombolytic therapy more rapidly relieves symptoms from PE than anticoagulation alone and may result in improved quality of life [21]. Thrombolysis may also prevent recurrent PE by dissolving the reservoir of thrombus that often remains in the lower extremities or pelvis.

Thrombolytic therapy for acute DVT can be performed to reduce thrombus burden [22, 23], restore venous patency, and reduce venous congestion, which can achieve important therapeutic goals in selected patients: (1) save life, limb, or organ when used urgently in patients with DVT causing acute limb-threatening circulatory compromise (i.e. phlegmasia cerulea dolens) or progressive IVC thrombosis causing an elevated PE risk or visceral organ compromise [24]; (2) enable faster relief of presenting symptoms in patients who exhibit clinical or anatomic progression despite the initial use of anticoagulant therapy [25]; and possibly (3) prevent late venous obstruction and valvular reflux, which are key contributors to the development of PTS [23, 26]. PTS is a leading determinant of long-term quality of life in DVT patients and often results in work disability and substantial costs to patients and society [27, 28].

Guidance Statement *The goals of thrombolytic therapy are to reduce thrombus burden and (a) for massive and submassive PE, to reduce mortality and recurrent PE, relieve symptoms, prevent CTEPH, preserve functional capacity, and improve quality of life; and (b) for acute iliofemoral DVT, to relieve symptoms, prevent PTS, improve quality of life, and in selected patients save life, limb, or organ.*

(2) What are the risk stratification criteria for thrombolytic therapy for PE and DVT?

Table 1 Guidance questions to be considered

What are the major goals of thrombolytic therapy for DVT and PE?
What are the risk stratification criteria for thrombolytic therapy for PE and DVT?
Is systemic thrombolytic therapy recommended for PE and DVT?
When and what types of catheter-directed thrombolysis are recommended for DVT and PE?
How can safety during thrombolytic infusions be optimized?
When should IVC filters be used with thrombolytic therapy?
When should surgical embolectomy be considered?

Table 2 Goals of thrombolytic therapy for pulmonary embolism

Short-term

- Dissolve thromboembolic obstruction of the pulmonary arterial tree to reduce pulmonary vascular resistance
- Rapidly resolve right ventricular (RV) pressure overload and improve RV function
- Expedite restoration of pulmonary capillary blood flow and effective gas exchange
- More quickly resolve symptoms
- Prevent early clinical deterioration and mortality in patients with massive and submassive PE
- Decrease the risk of recurrent PE by dissolving the reservoir of thrombus that often remains in the lower extremities or pelvis.

Long-term

- Prevent the development of CTEPH
- Preserve the normal hemodynamic response to exercise

Risk stratification refers to a systematic process of identifying VTE patients who may benefit from advanced therapies such as thrombolysis [29].

Risk stratification for acute PE

Risk stratification of patients with acute PE begins with a careful review of the patient's presentation, co-morbid conditions, and physical examination to assess for factors that increase the risk of death and hemodynamic collapse as well as bleeding. Acute PE describes a spectrum of clinical syndromes with varying prognosis [30]. Patients with acute PE presenting with hypotension, syncope, cardiogenic shock, cardiac arrest, or respiratory failure define *massive PE* and have a high mortality if aggressive treatment is not instituted [31]. Normotensive patients with acute PE and evidence of RV dysfunction are classified as having *submassive PE* and comprise a population at increased risk of adverse outcomes and early mortality [32].

In addition to the history and physical examination, electrocardiography, cardiac biomarkers, chest computed tomography (CT), and echocardiography are important instruments for risk stratification because they detect RV dysfunction. The electrocardiogram may be the earliest indicator of RV dysfunction in the setting of PE. Elevations in cardiac biomarkers, including troponin and brain-type natriuretic peptide (BNP) are associated with RV dysfunction and can identify patients at increased risk for hemodynamic deterioration and early mortality [33]. Cardiac biomarkers, in particular troponin, should be obtained when acute PE patients present with hemodynamic instability or if there is clinical suspicion for RV dysfunction [34]. Increasing cardiac troponin levels correspond with greater risk of PE-related death and all-cause mortality [35].

RV enlargement on chest CT is defined by RV-diameter-to-LV diameter ratio in excess of 0.9 [36]. The presence of RV enlargement on chest CT correlates with increased 30-day and 3-month mortality following acute PE [36, 37]. Chest CT is especially useful because the RV is imaged

during the initial diagnostic scan and no additional imaging or reformatting is required.

Echocardiography remains the most widely utilized imaging technique for detection of RV dysfunction in the setting of PE. Characteristic echocardiographic abnormalities in patients with acute PE include RV dilatation and hypokinesis, interventricular septal flattening and paradoxical motion toward the left ventricle (LV), abnormal transmitral Doppler flow profile (represented by the A wave making a greater contribution to LV diastole than the E wave), tricuspid regurgitation, pulmonary hypertension as identified by a peak tricuspid regurgitant jet velocity greater than 2.6 m/s, and loss of respirophasic collapse of the inferior vena cava (IVC) [38]. The finding of severe free wall hypokinesis and apical sparing (McConnell sign) is specific for acute PE [39]. Echocardiography is suggested in patients with acute PE and clinical evidence of RV failure, elevated levels of cardiac biomarkers, or unexpected clinical decompensation.

Guidance Statement For adults, we suggest use of an integrated risk stratification algorithm that incorporates the clinical presentation with cardiac biomarkers, chest CT, and echocardiography (Fig. 1) to guide decisions on

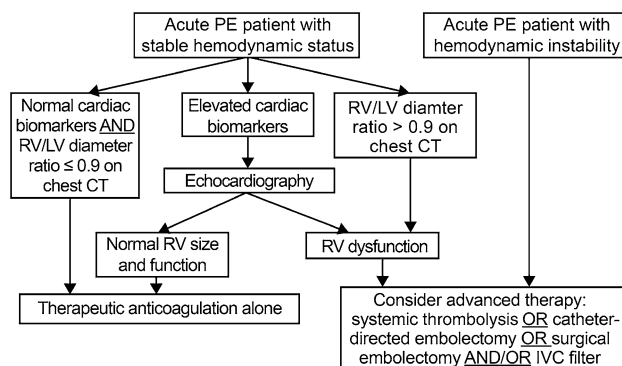


Fig. 1 An integrated algorithm for risk stratification for patients with acute pulmonary embolism (PE). RV right ventricular; LV left ventricular; CT computed tomography; IVC inferior vena cava

escalation to thrombolytic therapy, surgical embolectomy, or caval filter placement. In children, because prognostic factors for acute and long-term PE outcomes are not well-established and limited clinical trial data are available, we suggest that decision-making be based on individualized risk–benefit considerations and patient age, and that future prospective studies be conducted to inform future pediatric care.

Risk stratification for acute DVT

For most patients with acute DVT, endovascular or surgical intervention is not performed to prevent death, but is electively performed with the goals of improving short-term symptoms and long-term quality of life. Given the risks of thrombolytic therapy, careful risk stratification is important to ensure that only those patients who are most likely to benefit and least likely to be harmed are treated. Important factors to routinely consider are summarized below [25]:

- **Projected risk of bleeding** All patients in whom thrombolytic therapy is being considered must undergo careful evaluation for factors that may increase the risk of bleeding, including (but not limited to) ongoing or recent active bleeding; recent major surgery, trauma, pregnancy, CPR, or other invasive procedure; and the presence of lesions that could bleed in critical areas like the central nervous system. In general, a very low threshold should be applied to exclude patients if there are bleeding concerns, unless the patient clearly requires urgent escalation of therapy to save life, limb, or organ (see below).
- **Clinical severity of DVT** Urgent thrombolysis is indicated to prevent life-, limb-, or organ-threatening complications of acute DVT in situations such as phlegmasia cerulea dolens or extensive IVC thrombosis (especially with suprarenal extension which may lead to fatal PE or acute renal failure). Non-urgent thrombolysis may also be reasonable when initial anticoagulation alone has failed to achieve therapeutic objectives—either there is major anatomic DVT progression, an increase in clinical severity of DVT, or patient inability or unwillingness to tolerate ongoing major DVT symptoms (i.e. pain and swelling that are not relieved or that limit physical activity). In the latter situations, a low threshold should be applied to exclude patients from thrombolytic therapy if there are risk factors for bleeding, and the patient should be made aware of the risks, benefits, and alternative approaches.
- **Anatomic extent of DVT** Patients with acute iliofemoral DVT, defined as involving the iliac vein and/or

common femoral vein with symptom duration 14 days or less, are at much-increased risk for PTS and recurrent VTE and therefore appear to represent the most appropriate candidates for thrombolytic therapy [30, 40, 41]. In contrast, patients with asymptomatic DVT or isolated calf DVT should not undergo thrombolytic therapy since the risk of developing PTS is very low [42]. At present, thrombolytic therapy is discouraged in most patients with DVT that does not extend as far cephalad as the common femoral vein, and especially in patients with DVT symptoms of more than 4 weeks duration (since thrombolytic drugs are not as effective for clearance of organized thrombus) [22].

- **Life-expectancy baseline ambulatory capacity, and comorbidities.** Patients who are chronically unable to walk or who have very short life-expectancy are less likely to benefit meaningfully from aggressive therapy to prevent PTS. In addition, some patients are likely to have difficulty in tolerating aggressive intervention—for example, patients with significant respiratory compromise who cannot lie prone and safely receive sedation for the procedure.

Guidance Statement *Decisions on use of thrombolytic therapy for acute DVT must be highly individualized to patient circumstances. For the selection of symptomatic lower extremity acute proximal DVT patients for whom the benefits of thrombolysis are most likely to outweigh the risks, we suggest use of the risk stratification algorithm presented in Fig. 2.*

- (3) Is systemic thrombolytic therapy recommended for PE and DVT?

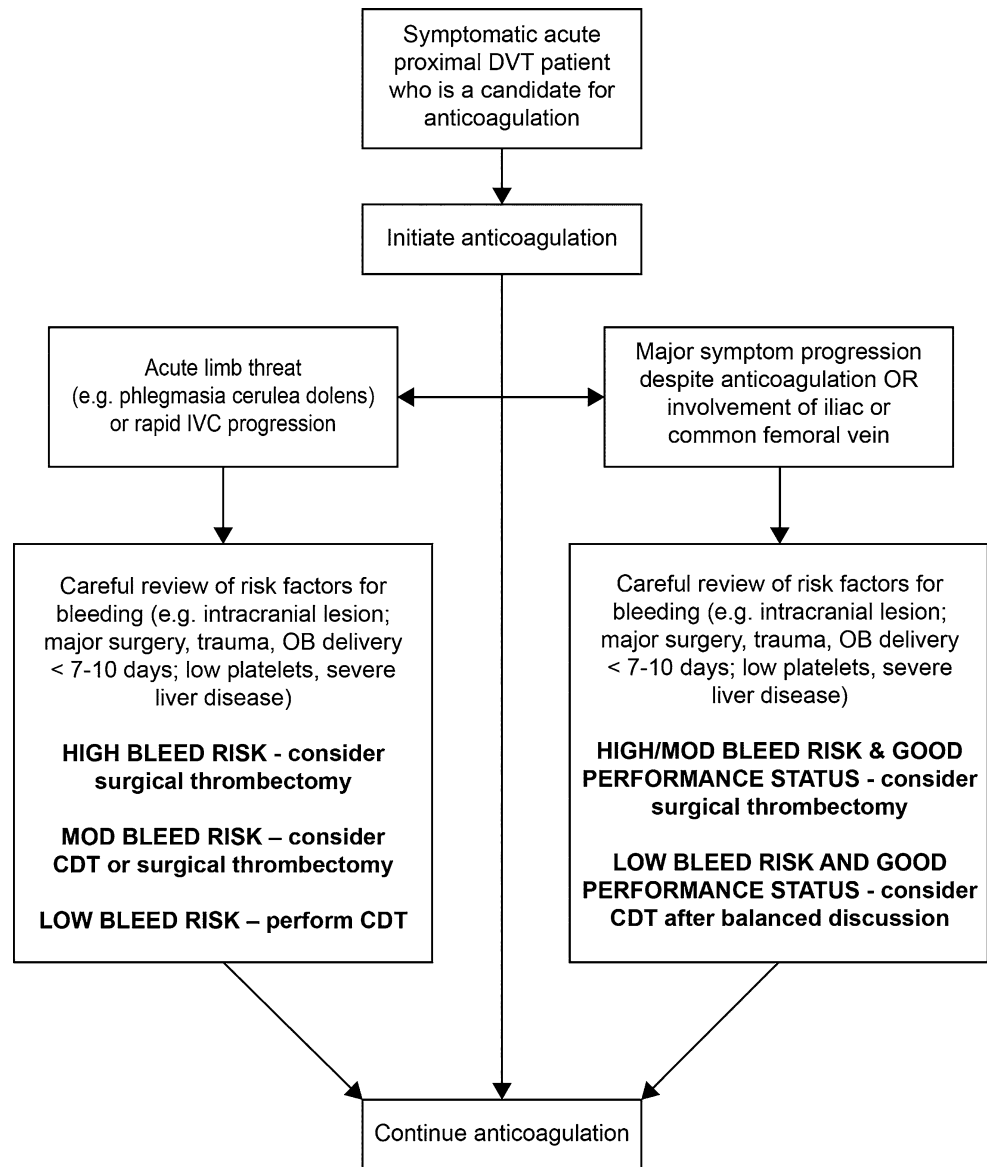
Systemic thrombolysis refers to the administration of a fibrinolytic drug through an intravenous line that is distant from the target vessel(s). In contemporary VTE practice, systemic thrombolysis is frequently considered for use in patients with submassive or massive PE.

Systemic thrombolysis for massive and submassive PE

Since 1970, 16 randomized controlled trials have compared systemic thrombolysis to anticoagulation alone for the treatment of acute PE with a mortality endpoint. In the largest trial of systemic thrombolysis for submassive PE to date (the PEITHO Study), thrombolysis was shown to prevent hemodynamic decompensation at the price of an increased risk of intracranial bleeding [43]. Three recent meta-analyses aggregated the data from the PEITHO and other prior trials [17, 44, 45].

Chatterjee et al. analyzed 1061 patients treated with thrombolysis and 1054 patients treated with anticoagulation alone [17]. This meta-analysis demonstrated systemic

Fig. 2 Risk stratification for patients with acute lower extremity proximal DVT



thrombolysis to be associated with a reduction in all-cause mortality (2.17 vs. 3.89 %; OR 0.53; 95 % confidence interval 0.32–0.88) and recurrent PE (1.17 vs. 3.05 %; OR 0.40; 95 % confidence interval 0.22–0.74) compared with anticoagulation alone, yielding a number needed to treat of 59. The mortality benefit persisted when the analysis was limited to patients with submassive PE. However, the use of systemic thrombolysis was also associated with an increase in major bleeding (9.24 vs. 3.42 %; OR 2.73; 95 % confidence interval 1.91–3.91) and intracranial bleeding (1.46 vs. 0.19 %; OR 4.78; 95 % confidence interval 1.78–12.04); the increased major bleeding was primarily driven by patients >65 years of age.

Nakamura et al. excluded trials if (1) they were conducted before 1980, (2) they were not presented at a major

international congress, or (3) they did not clearly consist of submassive PE patients as defined by right ventricular dysfunction [44]. The results of this meta-analysis (6 trials, 1510 patients) did not identify a mortality benefit for systemic thrombolysis when applied to patients with submassive PE, but did identify an increased risk of intracranial bleeding.

In the meta-analysis of Marti et al., 15 trials involving 2057 patients were included [45]. Thrombolysis was associated with a significant reduction of all-cause mortality (OR 0.59, 95 % CI 0.36–0.96). The mortality reduction was not statistically significant after the exclusion of studies including massive PE. Thrombolytic therapy was associated with a significant reduction in the combined endpoint of death or treatment escalation (OR 0.34; 95 % CI 0.22–0.53), PE-related mortality (OR 0.29;

95 % CI 0.14–0.60) and recurrent PE (OR 0.50; 95 % CI 0.27–0.94). Major bleeding (OR 2.91; 95 % CI 1.95–4.36) and fatal or intracranial hemorrhage (OR 3.18; 95 % CI 1.25–8.11) were more frequent among patients receiving thrombolysis.

The data for massive PE are scant, given its lower incidence in hospital-presenting patients and the practical difficulty in including them in randomized trials. A pooled meta-analysis of five studies did find a reduced rate of the composite endpoint of death or recurrent pulmonary embolism when thrombolytic therapy was used compared with anticoagulation alone in the setting of massive PE, although each individual endpoint failed to reach statistical significance [46]. Other studies have found that systemic thrombolytic therapy is associated with a reduced incidence of clinical deterioration, defined variably but typically implying escalation of care (intubation, resuscitation, or use of invasive rescue interventions), compared with anticoagulation alone.

Considering all the evidence, the mortality benefit for submassive PE appears to be largely offset by the risk of major bleeding, in particular intracranial bleeding.

Guidance Statement *Systemic thrombolysis is a reasonable consideration for selected patients with acute PE who are hemodynamically unstable (massive PE) or who have evidence of RV dysfunction (submassive PE), and who do not have contraindications to the use of thrombolytic drugs. The benefit to risk ratio may be more favorable for patients with massive PE. For submassive PE, the decision to use systemic thrombolysis should be made on an individual patient basis, with careful consideration of the patient's age, co-morbidities, severity of RV dysfunction, degree of biomarker elevation, respiratory status, bleeding risk, and likelihood of clinical deterioration based upon his/her observed clinical course.*

Systemic thrombolysis for DVT

The use of systemic thrombolysis to treat acute proximal DVT has been systematically assessed in randomized clinical trials. Although evidence of partial clot removal efficacy was demonstrated, major bleeding was increased by 3–4 times over anticoagulation alone [47]. Catheter-directed methods now enable superior venous thrombus removal efficacy with reduced fibrinolytic drug dose.

Guidance Statement *Systemic thrombolysis is not suggested for DVT therapy.*

- (4) When and what types of catheter-directed thrombolysis are recommended for PE and DVT?

Catheter-directed thrombolysis (CDT) refers to direct intra-thrombus administration of a fibrinolytic drug via a

catheter or device that is embedded within the thrombus using imaging guidance [48]. The theoretical advantages of intra-thrombus infusion are several: (1) the ability to achieve a high intra-thrombus drug concentration and avoid bypass of the drug around occluded venous segments via collaterals can improve clot removal efficacy; (2) the addition of mechanical thrombus disruption with some drug delivery methods may further enhance pharmacological dissolution of thrombus; (3) the improved efficacy may enable reduced thrombolytic drug dose, treatment time, hospital resource use, and bleeding complications; and (4) for DVT, catheter access into the venous system may enable treatment of underlying venous anatomic abnormalities, which may help to reduce the risk of recurrent DVT.

Catheter-directed thrombolysis for acute PE

Concern over the risk of intracranial hemorrhage has dampened clinician enthusiasm for full-dose systemic thrombolysis, and has driven interest in catheter-directed techniques that utilize lower doses of thrombolytic agent thereby potentially lowering the bleeding risk. In a systematic review of 594 patients from 35 studies who received a heterogeneous array of catheter-based therapies, clinical success was achieved in 87 % of patients undergoing catheter-directed therapy with a relatively low frequency of major complications [49]. It should be noted, however, that the data in this review were derived predominantly from case series and small cohort studies, precluding firm conclusions from being drawn.

At present, the use of catheter-directed therapy for acute PE may be considered for hemodynamically compromised patients or those with significant RV dysfunction when systemic thrombolysis has failed or as an alternative to systemic thrombolytic therapy, if local expertise is available [50–53]. For patients with absolute contraindications to thrombolysis, catheter-assisted embolectomy without thrombolysis may be used, but the proportion of patients who are expected to benefit is uncertain and is likely lower than for drug-based CDT [51, 52]. If catheter-directed therapy is incorporated into local PE treatment algorithms, we recommend close monitoring of the actual outcomes achieved since the prospective studies evaluating its use are limited in size and scope (just one RCT with 59 patients), and results may vary from institution to institution.

In recent years, ultrasound-assisted CDT has undergone prospective evaluation for the treatment of patients with acute PE. The EkoSonic® Endovascular System (EKOS, a BTG International Group company, Bothell, WA, USA) uses high-frequency, low-intensity ultrasound to disaggregate fibrin fibers, potentially allowing greater penetration of the thrombolytic drug. In a randomized controlled trial

of 59 patients with submassive PE in Europe, ultrasound-assisted CDT with 20 mg total dose rt-PA plus anticoagulation reduced the RV/LV diameter ratio from baseline to 24 h to a greater extent than anticoagulation alone [54]. No patients undergoing ultrasound-assisted CDT died, suffered recurrent VTE, or developed major bleeding. A subsequent prospective, single-arm, multicenter study of ultrasound-assisted CDT in 150 patients with acute massive or submassive PE demonstrated a 25 % reduction in mean RV/LV diameter ratio from pre-procedure to 48 h post-procedure, a 30 % decrease in mean pulmonary artery systolic pressure from baseline to procedure completion, and a 30 % improvement in the modified Miller obstruction index from baseline to 48 h post-procedure [55]. Major bleeding occurred in 10 % of patients with only one patient suffering a Global Use of Strategies to Open Occluded Coronary Arteries (GUSTO) severe or life-threatening bleed. No patients suffered intracranial hemorrhage. On May 21, 2014, based on the data from this trial and prior studies, the EkoSonic® Endovascular System received FDA approval for the treatment of PE. However, data from larger randomized trials will be needed to determine if ultrasound-assisted CDT or any catheter-based method should be routinely employed for the management of submassive PE on the basis of mortality reduction or prevention of long-term PE sequelae.

Guidance Statement *CDT may be reasonable to employ in centers with the available expertise for patients with acute PE who are hemodynamically unstable (massive PE) or who have evidence of right ventricular dysfunction (submassive PE), and who do not have contraindications to the use of thrombolytic drugs. CDT may enable the use of lower doses of thrombolytic drug than systemic thrombolysis. For patients with relative contraindications to thrombolytic drugs, either surgical embolectomy or CDT may be considered, depending on the specific nature of the contraindication, the availability of local endovascular or surgical expertise, and the ability to rapidly activate the applicable procedure team.*

Catheter-directed thrombolysis for acute DVT

The basic steps in performing CDT and related procedures are: (a) ultrasound-guided venous access using a micropuncture system to reduce the risk of access site bleeding; (b) catheter venography to map the extent of thrombus; (c) intra-thrombus delivery of a thrombolytic drug—this may be accomplished via slow infusion through a traditional multi-sidehole infusion catheter or ultrasound-emitting infusion catheter, or by bolus drug delivery and dispersion through a catheter-based drug delivery device; (d) re-assessment with venography, and clean-up of

residual thrombus using mechanical thrombectomy; and (e) treatment of underlying venous stenosis (e.g. May–Thurner syndrome) with balloon angioplasty or stent placement [25, 56].

Although the broad range of specific methods is beyond the scope of this article to discuss, they are categorized below into 3 groups, with observed results briefly summarized:

- **Drug-only CDT** With drug-only CDT, successful lysis of >50 % of the thrombus and restoration of venous patency are expected in 80–90 % of patients in whom symptom duration is <14 days [25]. In a rigorously conducted multicenter RCT (the CAVENT Study) of patients with DVT involving the iliac and/or upper femoral venous system, CDT using rt-PA infusions (at 0.01 mg/kg/hr for up to 4 days) with anticoagulant therapy was associated with a 26 % relative reduction in the risk of PTS over 2 years (41.1 vs. 55.6 %, $p = 0.04$) compared with anticoagulant therapy alone [57]. The amount of residual thrombus post-CDT correlated with venous patency rates at 24 months follow-up ($p = 0.04$), and venous patency at 6 and 24 months correlated with freedom from PTS ($p < 0.001$) [23]. In this study, 3.2 % of patients receiving CDT developed a major bleed, including one patient who required surgery and another who received a blood transfusion, but there were no intracranial bleeds or deaths. Limitations of this study include its modest sample size (efficacy outcomes reported in 189 patients) and geographical limitation (four treatment centers in Norway).
- **Device-only percutaneous mechanical thrombectomy (PMT)** Published experience with PMT (without use of a fibrinolytic drug) for DVT has been disappointing. In general, the use of aspirating-type devices has not removed sufficient thrombus to be therapeutically useful [58, 59], and use of non-aspirating devices can result in symptomatic PE [60, 61]. Although new aspirating devices are now available, prospective data on their use is lacking at present. Hence, the use of stand-alone PMT is strongly discouraged unless a patient with clinically severe DVT is felt to absolutely require therapy and fibrinolytic drugs cannot be given.
- **Drug plus device pharmacomechanical CDT (PCDT)** Retrospective comparative studies have documented that the use of adjunctive PMT along with infusion CDT is associated with (a) initial treatment safety and efficacy at least as good as infusion-only CDT—observational studies suggest 3–5 % rates of major bleeding; (b) 40–50 % reductions in drug dose and treatment time compared with infusion-only CDT; and (c) markedly reduced hospital stays and intensive care

unit utilization [62–65]. As a result, clinical practice in the US and many other countries has largely evolved towards the use of PCDT. Some PCDT methods (e.g. isolated thrombolysis with the Trellis device or powerpulse thrombolysis with the AngioJet device) can enable treatment of selected patients in a single procedure session, further minimizing patient exposure to the thrombolytic drug [66, 67]. However, there are no completed, high-quality RCTs evaluating PCDT. The ongoing NIH-sponsored ATTRACT Trial (NCT 0070035) and other studies may soon provide rigorous data on the benefit-to-risk ratio of PCDT [68]. In adolescents, limited single-institution prospective data on PCDT for occlusive iliofemoral DVT provide proof-of-concept support that this approach can be feasibly performed with low complication rates and PTS rates that appear favourable [69].

- **Ultrasound-assisted CDT** As noted above, intra-thrombus drug delivery can also be performed in conjunction with the delivery of low-power ultrasound energy into the thrombus using the EkoSonic® Endovascular System. Venous thrombus removal efficacy appears to be comparable to that of infusion-only CDT. A retrospective comparative study did not find an added benefit to use of the ultrasound catheter compared with a standard multi-sidehole catheter, but this comparison had methodological limitations [70]. To date, there have been no well-designed prospective studies to determine the incremental value of the added ultrasound. An ongoing multicenter RCT is ongoing in Europe to determine if ultrasound-assisted CDT is superior to anticoagulation alone for the prevention of PTS. To date, no thrombolytic drug is FDA approved for the treatment of DVT. Although the use of reteplase and tenecteplase has been reported in small case series, the vast majority of reported experience has been with rt-PA. For infusion CDT with rt-PA, currently accepted dosing is weight-based administration at 0.01 mg/kg/hr, not to exceed 1.0 mg/hr [25, 57].

Guidance Statement *When acute DVT is treated, the use of pharmacomechanical CDT is suggested over the use of infusion-only CDT since it is likely to reduce treatment time and thrombolytic dose. When rt-PA is used, weight-based administration of 0.01 mg/kg/hr, not to exceed 1.0 mg/hr, is suggested. The use of stand-alone PMT is strongly discouraged unless a patient with clinically severe DVT is felt to absolutely require therapy and fibrinolytic drugs cannot be given.*

- (5) How can safety during thrombolytic infusions be optimized?

Physicians who employ thrombolytic drugs must realize that their therapeutic window of safety is extremely narrow. Careful patient selection is paramount, and in particular the review of a patient's history for factors that may connote an increased risk of bleeding complications must be performed with utmost rigor. Since the venous access site has been the most common site of bleeding, venous punctures for CDT should be performed with ultrasound guidance to reduce the risk of inadvertent arterial punctures. Patients must be monitored carefully in a hospital area where frequent nursing contact can be expected; in most hospitals this may be an intensive care unit or intermediate-level care unit. Excellent communication among the physicians, procedure area nurses, and floor/ICU nurses is essential to ensure that transitions of care do not introduce the potential for errors. Temporary or permanent cessation of the thrombolytic infusion should be considered if active bleeding occurs, if there is a drop in hematocrit, if the PTT or anti-Xa level is supratherapeutic, or if the fibrinogen level drops to less than 100 mg/dl. For patients undergoing CDT for DVT, venographic re-checks should be performed no less frequently than every 24 h. For adults undergoing CDT, infusion for >36–48 h is strongly discouraged and should occur only in unusual cases.

Guidance Statement *Safety during thrombolytic infusions can be optimized with rigorous patient selection, use of ultrasound guidance for venous punctures, and close patient monitoring.*

- (6) When should IVC filters be used with thrombolytic therapy?

IVC filter insertion is generally considered for VTE patients who cannot receive anticoagulation or who have suffered a recurrent VTE despite therapeutic anticoagulation [53]. However, IVC filters may also be placed in patients who are receiving anticoagulation but in whom there is concern that a subsequent PE would be fatal. In a sub-analysis of 108 patients with massive PE within the International Cooperative Pulmonary Embolism Registry (ICOPER), 10 out of 11 patients survived until 90 days, and none developed recurrent PE [71]. In this study, IVC filter placement was associated with a hazard ratio of 0.12 (95 % CI 0.02–0.85) for death following massive PE. In a separate analysis of hospital discharge data, unstable patients, irrespective of whether they received thrombolytics, had a lower case fatality rate if they received an IVC filter [72]. It should be noted that these findings represent non-randomized data that may have been subject to bias; nevertheless, they suggest that in selected patients with poor cardiopulmonary reserve who cannot tolerate another embolic event, IVC filter insertion may indeed be of benefit.

In the same hospital discharge data analysis, the authors found a lower case fatality rate for patients who received a filter in stable patients who underwent systemic thrombolysis compared with those who did not receive a filter and underwent systemic thrombolysis [72]. It is important to note that the definition of “instability” in this study was an ICD-9 code corresponding to “shock” or “ventilator dependence”, so the term “stability” may have included massive PE patients who were not in frank shock. Other than these data, there is no convincing evidence for or against the placement of IVC filters in patients with submassive PE.

For patients receiving thrombolytic therapy for DVT, the incidence of symptomatic PE during drug-only CDT does not appear to exceed that observed in patients who receive anticoagulant therapy alone [22, 25]. In a multicenter RCT in which 92 patients received drug-only CDT, there were no cases of procedure-related symptomatic PE [57]. Whether or not an IVC filter enhances safety for patients undergoing single-session PCDT, which may involve greater on-table thrombus manipulation, is not clear. The long-term risks of retrievable filters include device migration, embolization, and fracture, and recurrent DVT (which could increase the risk of PTS).

Guidance Statement *The routine placement of IVC filters before infusion CDT is not suggested. Placement of a retrievable filter may be reasonable for patients at particularly high risk of major morbidity due to clinical PE during CDT, such as patients with poor cardiopulmonary reserve, especially if single-session PCDT or stand-alone PMT without pharmacologic CDT is being employed. Once thrombolysis is completed, IVC filters should ideally be removed as soon as the period of major PE risk has passed.*

(7) When should surgical embolectomy be considered?

Surgical embolectomy is an important option in the treatment of hemodynamically significant pulmonary embolism. There has been a steady increase in survival over the past few decades, secondary to improved techniques and patient selection. This is reflected by the reduced mortality from 1985 to 2005 (20 %) compared with the time period before 1985 (32 %) [73]. This same review demonstrated a much higher mortality in patients who were in cardiac arrest prior to surgery (59 %) versus those who were not (29 %). As might be expected, patients who have surgery initiated when hemodynamically stable appear to have lower operative mortality than patients who are ventilator dependent or in cardiogenic shock [74]. In a single center registry in which 40 patients who did not respond to initial systemic thrombolysis underwent either a second thrombolytic administration or a pulmonary embolectomy, there was a trend towards higher

mortality in the thrombolytic group [75]. In a single-center retrospective analysis of 47 patients undergoing pulmonary embolectomy for both massive and submassive PE, there were only 3 deaths, suggesting that surgery can provide reasonably good outcomes if significant experience is locally available and patients are carefully selected [76].

Multidisciplinary PE response teams have emerged given the various treatment options involving different areas of expertise [77]. Team members may include pulmonologists, cardiologists, interventional radiologists, cardiothoracic surgeons, and others. The purpose of such teams is to rapidly assess and stratify patients presenting with acute PE and determine whether and what type of therapeutic escalation beyond anticoagulation is indicated. A key component of these teams is an early multi-disciplinary consensus on the best option for an individual patient, taking into account thrombus burden and location, imaging and biomarker results, bleeding risk, and clinical presentation. Currently, robust outcome data are lacking regarding the efficacy of such teams. Given that early stratification can identify patients who are likely to decompensate and need treatment escalation, we suggest early communication between treating physicians and local medical, interventional, and surgical specialists.

Guidance Statement *Comparative data are limited, and it is not currently possible to make firm conclusions about when and in which patients embolectomy should be performed. Based on the limited data and if local surgical expertise is available, it is suggested that embolectomy be considered for massive or submassive PE patients who fail or cannot receive systemic thrombolysis but who have not suffered a cardiac arrest, especially if intra-cardiac thrombus (“in transit”) is present.*

Conclusion

Viewing acute VTE as a chronic disease

Patients who are considered for, or undergo, thrombolytic therapy for an episode of acute DVT or PE remain at risk for long-term sequelae. Recurrent VTE has long been recognized as an ongoing risk. However, patients surviving an acute PE event also place substantial importance on avoiding chronic complications and symptoms in the following months to years [21]. Such concerns are justified since >40 % of patients assessed 3.6 years after their acute PE have significantly worse generic quality of life than age- and sex- adjusted population norms [78]. Exercise tolerance also appears to be worse in patients who have suffered submassive PE [79]. Likewise, the occurrence and severity of PTS have been shown to represent a DVT

Table 3 Summary of guidance statements

Question	Guidance statement
(1) What are the major goals of thrombolytic therapy for DVT and PE?	The goals of thrombolytic therapy are to reduce thrombus burden and (a) for massive and submassive PE, to reduce mortality and recurrent PE, relieve symptoms, prevent CTEPH, preserve functional capacity, and improve quality of life; and (b) for acute iliofemoral DVT, to relieve symptoms, prevent PTS, improve quality of life, and in selected patients save life, limb, or organ
(2a) What are the risk stratification criteria for thrombolytic therapy for PE?	For adults, we suggest use of an integrated risk stratification algorithm that incorporates the clinical presentation with cardiac biomarkers, chest CT, and echocardiography (Fig. 1) to guide decisions on escalation to thrombolytic therapy, surgical embolectomy, or caval filter placement. In children, because prognostic factors for acute and long-term PE outcomes are not well-established and limited clinical trial data are available, we suggest that decision-making be based on individualized risk-benefit considerations and patient age, and that future prospective studies be conducted to inform future pediatric care
(2b) What are the risk stratification criteria for thrombolytic therapy for DVT?	Decisions on use of thrombolytic therapy for acute DVT must be highly individualized to patient circumstances. For the selection of symptomatic lower extremity acute proximal DVT patients for whom the benefits of thrombolysis are most likely to outweigh the risks, we suggest use of the risk stratification algorithm presented in Fig. 2
(3a) Is systemic thrombolytic therapy recommended for PE?	Systemic thrombolysis is a reasonable consideration for selected patients with acute PE who are hemodynamically unstable (massive PE) or who have evidence of RV dysfunction (submassive PE), and who do not have contraindications to the use of thrombolytic drugs. The benefit to risk ratio may be more favorable for patients with massive PE. For submassive PE, the decision to use systemic thrombolysis should be made on an individual patient basis, with careful consideration of the patient's age, co-morbidities, severity of RV dysfunction, degree of biomarker elevation, respiratory status, bleeding risk, and likelihood of clinical deterioration based upon his/her observed clinical course
(3b) Is systemic thrombolytic therapy recommended for DVT?	Systemic thrombolysis is not recommended for DVT therapy
(4a) When and what types of catheter-directed thrombolysis are recommended for PE?	CDT may be reasonable to employ in centers with the available expertise for patients with acute PE who are hemodynamically unstable (massive PE) or who have evidence of right ventricular dysfunction (submassive PE), and who do not have contraindications to the use of thrombolytic drugs. CDT may enable the use of lower doses of thrombolytic drug than systemic thrombolysis. For patients with contraindications to thrombolytic drugs, either surgical thrombectomy or CDT may be considered, depending on the specific nature of the contraindication, the availability of local endovascular or surgical expertise, and the ability to rapidly activate the applicable procedure team
(4b) When and what types of catheter-directed thrombolysis are recommended for DVT?	When acute DVT is treated, the use of pharmacomechanical CDT is suggested over the use of infusion-only CDT since it is likely to reduce treatment time and thrombolytic dose. When rt-PA is used, weight-based administration of 0.01 mg/kg/hr, not to exceed 1.0 mg/hr, is recommended. The use of stand-alone PMT is strongly discouraged unless a patient with clinically severe DVT is felt to absolutely require therapy and fibrinolytic drugs cannot be given
(5) How can safety during thrombolytic infusions be optimized?	Safety during thrombolytic infusions can be optimized with rigorous patient selection, use of ultrasound guidance for venous punctures, and close patient monitoring.
(6) When should IVC filters be used with thrombolytic therapy?	The routine placement of IVC filters before infusion CDT is not recommended. Placement of a retrievable filter may be reasonable for patients at particularly high risk of major morbidity due to clinical PE during CDT, such as patients with poor cardiopulmonary reserve, especially if single-session PCDT or stand-alone PMT without pharmacologic CDT is being employed. Once thrombolysis is completed, IVC filters should ideally be removed as soon as the period of major PE risk has passed
(7) When should surgical embolectomy be considered?	Comparative data are limited, and it is not currently possible to make firm conclusions about when and in which patients embolectomy should be performed. Based on the limited data and if local surgical expertise is available, it is suggested that embolectomy be considered for massive or submassive PE patients who fail or cannot receive systemic thrombolysis but who have not suffered a cardiac arrest, especially if intra-cardiac thrombus ("in transit") is present

patient's primary determinant of quality of life over 2 years follow-up [27]. The anxiety and psychological trauma caused by an episode of acute PE or DVT also cannot be discounted [80].

Therefore, considering also the limited evidence foundation underlying many recommendations and the many unknowns concerning their generalizability to specific practice settings, we strongly recommend that physicians systematically monitor the actual clinical outcomes that are achieved in their local practices in applying the above clinical recommendations, and make any needed adjustments. In doing so, we recommend that comparable attention be given to short-term outcomes (e.g. survival, need for treatment escalation) and to long-term outcomes (e.g. functional status and QOL), and that future studies evaluate strategies to reduce psychological and/or physical adverse outcomes following VTE. Referral of patients to local or web-based PE and DVT support groups and patient education sites may assist patients in their understanding of, and emotional recovery from, VTE. Table 3 contains a summary of all guidance suggestions.

Acknowledgments We wish to acknowledge the support provided by Myelin and Associates with the preparation of this manuscript for submission. The work contained in this manuscript was partially funded by support from the following companies: Boehringer Ingelheim, Daiichi Sankyo and Janssen Pharmaceuticals. This guidance document is endorsed by the Anticoagulation Forum's Board of Directors: Mark Crowther, MD, MSc, FRCPC, Jack E. Ansell, MD, Allison Burnett, PharmD, Nathan Clark, PharmD, Adam Cuker, MD, David Garcia, MD, Scott Kaatz, DO, MSc, FACP, Renato D. Lopes, MD, PhD, Tracy Minichiello, MD, Edith Nutescu, PharmD, FCCP, Lynn Oertel, MS, ANP, CACP, Eva Kline-Rogers, MS, RN, NP, Terri Schnurr, RN, CCRC, Michael Streiff, MD, Diane Wirth, ANP, CACP, BCPS, CACP, Daniel Witt, Pharm D, Ann Wittkowsky, PharmD, CACP, FASHP, FCCP.

Disclosures SVedantham: Research support from Covidien, Bayer Healthcare, BSN Medical, Genentech, Cook Inc., Volcano, Inc. G Piazza: Research support from BMS, Daiichi-Sankyo, BTG/EKOS, and Janssen A Sista and N A Goldenberg: None.

Open Access This article is distributed under the terms of the Creative Commons Attribution 4.0 International License (<http://creativecommons.org/licenses/by/4.0/>), which permits unrestricted use, distribution, and reproduction in any medium, provided you give appropriate credit to the original author(s) and the source, provide a link to the Creative Commons license, and indicate if changes were made.

References

- Huang W, Goldberg RJ, Anderson FA, Kiefe CI, Spence FA (2014) Secular trends in occurrence of acute venous thromboembolism: the Worcester VTE Study (1985–2009). *Am J Med* 127(9):829–839:e5
- Raffini L, Huang YS, Witmer C, Feudtner D (2009) Dramatic increase in venous thromboembolism in children's hospitals in the United States from 2001 to 2007. *Pediatrics* 124(4):1001–1008
- The surgeon general's call to action to prevent deep vein thrombosis and pulmonary embolism. U.S. Department of Health and Human Services (2008) www.Surgeongeneral.Gov/topics/deepvein/calltoaction/call-to-action-on-dvt-2008.Pdf
- Casazza F, Becattini C, Bongarzone A, Cuccia C, Roncon L, Favretto G, Zonin P, Pignataro L, Agnelli G (2012) Clinical features and short term outcomes of patients with acute pulmonary embolism. The Italian pulmonary embolism registry (iper). *Thromb Res* 130:847–852
- Becattini C, Casazza F, Forgiione C, Porro F, Fadin BM, Stucchi A, Lignani A, Conte L, Imperadore F, Bongarzone A, Agnelli G (2013) Acute pulmonary embolism: external validation of an integrated risk stratification model. *Chest* 144:1539–1545
- Prandoni P, Noventa F, Ghirarduzzi A, Pengo V, Bernardi E, Pesavento R et al (2007) The risk of recurrent venous thromboembolism after discontinuing anticoagulation in patients with acute proximal deep vein thrombosis or pulmonary embolism. A prospective cohort study in 1626 patients. *Haematologica* 92:199–205
- Sogaard KK, Schmidt M, Pedersen L, Horvath-Puho E, Sorensen HT (2014) 30-year mortality after venous thromboembolism: a population-based cohort study. *Circulation* 130:829–836
- Kahn SR, Shrier I, Julian JA et al (2008) Determinants and time course of the postthrombotic syndrome after acute deep venous thrombosis. *Ann Intern Med* 149:698–707
- Kahn SR, Comerota AJ, Cushman M, Evans NS, Ginsberg JS, Goldenberg NA, Gupta DK, Prandoni P, Vedantham S, Walsh E, Weitz JI (2014) The post-thrombotic syndrome: evidence-based prevention, diagnosis, and treatment strategies—a scientific statement from the American Heart Association. *Circulation* 130:1636–1661
- Goldenberg NA, Donadini MP, Kahn SR, Crowther M, Kenet G, Nowak-Gottl U, Manco-Johnson MJ (2010) Post-thrombotic syndrome in children: a systematic review of frequency of occurrence, validity of outcome measures, and prognostic factors. *Haematologica* 95(11):1952–1959
- Piazza G, Goldhaber SZ (2011) Chronic thromboembolic pulmonary hypertension. *N Engl J Med* 364:351–360
- Becattini C, Agnelli G, Salvi A, Grifoni S, Pancaldi LG, Enea I, Balsemin F, Campanini M, Ghirarduzzi A, Casazza F (2010) Bolus tenecteplase for right ventricle dysfunction in hemodynamically stable patients with pulmonary embolism. *Thromb Res* 125:e82–e86
- Goldhaber SZ, Haire WD, Feldstein ML, Miller M, Toltzis R, Smith JL, Taveira da Silva AM, Come PC, Lee RT, Parker JA et al (1993) Alteplase versus heparin in acute pulmonary embolism: randomised trial assessing right-ventricular function and pulmonary perfusion. *Lancet* 341:507–511
- Nass N, McConnell MV, Goldhaber SZ, Chyu S, Solomon SD (1999) Recovery of regional right ventricular function after thrombolysis for pulmonary embolism. *Am J Cardiol* 83(804–806):A810
- Sharma GV, Burleson VA, Sasahara AA (1980) Effect of thrombolytic therapy on pulmonary-capillary blood volume in patients with pulmonary embolism. *N Engl J Med* 303:842–845
- Jerjes-Sanchez C, Ramirez-Rivera A, de Garcia ML, Arriaga-Nava R, Valencia S, Rosado-Buzzo A, Pierzo JA, Rosas E (1995) Streptokinase and heparin versus heparin alone in massive pulmonary embolism: a randomized controlled trial. *J Thromb Thrombolysis* 2:227–229
- Chatterjee S, Chakraborty A, Weinberg I, Kadakia M, Wilensky RL, Sardar P, Kumbhani DJ, Mukherjee D, Jaff MR, Giri J (2014) Thrombolysis for pulmonary embolism and risk of all-cause

- mortality, major bleeding, and intracranial hemorrhage: a meta-analysis. *JAMA* 311:2414–2421
18. Kline JA, Steuerwald MT, Marchick MR, Hernandez-Nino J, Rose GA (2009) Prospective evaluation of right ventricular function and functional status 6 months after acute submassive pulmonary embolism: frequency of persistent or subsequent elevation in estimated pulmonary artery pressure. *Chest* 136: 1202–1210
 19. Sharifi M, Bay C, Skrocki L, Rahimi F, Mehdi-pour M, Investigators M (2013) Moderate pulmonary embolism treated with thrombolysis (from the “mopett” trial). *Am J Cardiol* 111: 273–277
 20. Sharma GV, Folland ED, McIntyre KM, Sasahara AA (2000) Long-term benefit of thrombolytic therapy in patients with pulmonary embolism. *Vasc Med* 5:91–95
 21. Kline JA, Nordenholz KE, Courtney DM, Kabrhel C, Jones AE, Rondina MT, Diercks DB, Klinger JR, Hernandez J (2014) Treatment of submassive pulmonary embolism with teneceplase or placebo: cardiopulmonary outcomes at 3 months: Multicenter double-blind, placebo-controlled randomized trial. *J Thromb Haemost* 12:459–468
 22. Mewissen WM, Seabrook GR, Meissner MH, Cynamon J, Labropoulos N, Haughton SH (1999) Catheter-directed thrombolysis for lower extremity deep venous thrombosis: report of a national multicenter registry. *Radiology* 211:39–49
 23. Haig Y, Enden T, Slagsvold C et al (2013) Determinants of early and long-term efficacy of catheter-directed thrombolysis in proximal deep vein thrombosis. *J Vasc Interv Radiol* 24(1):17–24
 24. Patel NH, Plorde JJ, Meissner M (1998) Catheter-directed thrombolysis in the treatment of phlegmasia cerulea dolens. *Ann Vasc Surg* 12(5):471–475
 25. Vedantham S, Sista AK, Klein SJ, Nayak L, Razavi MK, Kalva SP, Saad WE, Dariushnia S, Caplin DM, Chao C, Ganguli S, Walker TG, Nikolic B, For the Society of Interventional Radiology and Cardiovascular and Interventional Radiological Society of Europe Standards of Practice Committees (2014) Quality improvement guidelines for the treatment of lower-extremity deep vein thrombosis with use of endovascular thrombus removal. *J Vasc Interv Radiol* 25:1317–1325
 26. Elsharawy M, Elzayat E (2002) Early results of thrombolysis vs anticoagulation in iliofemoral venous thrombosis. A randomised clinical trial. *Eur J Vasc Endovasc Surg* 24:209–214
 27. Kahn SR, Shbaklo H, Lamping DL et al (2008) Determinants of health-related quality of life during the 2 years following deep vein thrombosis. *J Thromb Haemost* 6:1105–1112
 28. Guanella R, Ducruet T, Johri M, Miron MJ, Roussin A, Desmarais S, Joyal F, Kassis J, Solymoss S, Ginsberg JS, Lamping DL, Shrier I, Kahn SR (2011) Economic burden and cost determinants of deep vein thrombosis during 2 years following diagnosis: a prospective evaluation. *J Thromb Haemost* 9(12):2397–2405
 29. Piazza G, Goldhaber SZ (2010) Fibrinolysis for acute pulmonary embolism. *Vasc Med* 15:419–428
 30. Jaff MR, McMurtry MS, Archer SL, Cushman M, Goldenberg N, Goldhaber SZ, Jenkins JS, Kline JA, Michaels AD, Thistlethwaite P, Vedantham S, White RJ, Zierler BK (2011) Management of massive and submassive pulmonary embolism, iliofemoral deep vein thrombosis, and chronic thromboembolic pulmonary hypertension: a scientific statement from the American Heart Association. *Circulation* 123:1788–1830
 31. Kucher N, Goldhaber SZ (2005) Management of massive pulmonary embolism. *Circulation* 112:e28–e32
 32. Piazza G (2013) Submassive pulmonary embolism. *JAMA* 309: 171–180
 33. Piazza G, Goldhaber SZ (2010) Management of submassive pulmonary embolism. *Circulation* 122:1124–1129
 34. Kearon C, Akl EA, Comerota AJ, Prandoni P, Bounameaux H, Goldhaber SZ, Nelson ME, Wells PS, Gould MK, Dentali F, Crowther M, Kahn SR (2012) Antithrombotic therapy for VTE disease: antithrombotic therapy and prevention of thrombosis, 9th ed: American college of chest physicians evidence-based clinical practice guidelines. *Chest* 141:e419S–e494S
 35. Stein PD, Matta F, Janjua M, Yaekoub AY, Jawaesh F, Alrifai A (2010) Outcome in stable patients with acute pulmonary embolism who had right ventricular enlargement and/or elevated levels of troponin I. *Am J Cardiol* 106:558–563
 36. Schoepf UJ, Kucher N, Kipfmüller F, Quiroz R, Costello P, Goldhaber SZ (2004) Right ventricular enlargement on chest computed tomography: a predictor of early death in acute pulmonary embolism. *Circulation* 110:3276–3280
 37. van der Meer RW, Pattynama PM, van Strijen MJ, van den Berg-Huijsmans AA, Hartmann IJ, Putter H, de Roos A, Huisman MV (2005) Right ventricular dysfunction and pulmonary obstruction index at helical CT: prediction of clinical outcome during 3-month follow-up in patients with acute pulmonary embolism. *Radiology* 235:798–803
 38. Piazza G, Goldhaber SZ (2005) The acutely decompensated right ventricle: pathways for diagnosis and management. *Chest* 128:1836–1852
 39. McConnell MV, Solomon SD, Rayan ME, Come PC, Goldhaber SZ, Lee RT (1996) Regional right ventricular dysfunction detected by echocardiography in acute pulmonary embolism. *Am J Cardiol* 78:469–473
 40. Douketis JD, Crowther MA, Foster GA, Ginsberg JS (2001) Does the location of thrombosis determine the risk of disease recurrence in patients with proximal deep vein thrombosis? *Am J Med* 110(7):515–519
 41. Delis KT, Bountouroglou D, Mansfield AO (2004) Venous claudication in iliofemoral thrombosis: long-term effects on venous hemodynamics, clinical status, and quality of life. *Ann Surg* 239(1):118–126
 42. Ginsberg JS, Hirsh J, Julian J, Vander LaandeVries M, Magier D, MacKinnon B, Gent M (2001) Prevention and treatment of postphlebotic syndrome: results of a 3-part study. *Arch Intern Med* 161:2105–2109
 43. Meyer G, Vicaut E, Danays T, For the PEITHO Investigators et al (2014) Fibrinolysis for patients with intermediate-risk pulmonary embolism. *N Engl J Med* 370:1402–1411
 44. Nakamura S, Takano H, Kubota Y, Asai K, Shimizu W (2014) Impact of the efficacy of thrombolytic therapy on the mortality of patients with acute submassive pulmonary embolism: a meta-analysis. *J Thromb Haemost* 12(7):1086–1095
 45. Marti C, John G, Konstantinides S, Combescure C, Sanchez O, Lankeit M, Meyer G, Perrier A (2014) Systemic thrombolytic therapy for acute pulmonary embolism: a systematic review and meta-analysis. *Eur Heart J*. doi:10.1093/eurheartj/ehu218
 46. Wan S, Quinlan DJ, Agnelli G, Eikelboom JW (2004) Thrombolysis compared with heparin for the initial treatment of pulmonary embolism: a meta-analysis of the randomized controlled trials. *Circulation* 110:744–749
 47. Goldhaber SZ, Buring JE, Lipnick RJ, Hennekens CH (1984) Pooled analyses of randomized trials of streptokinase and heparin in phlebographically documented acute deep venous thrombosis. *Am J Med* 76:393–397
 48. Vedantham S, Grassi CJ, Ferral H, Patel NH, Thorpe PE, Antonacci VP, Janne D’Othee BM, Hofmann LV, Cardella JF, Kundu S, Lewis CA, Schwartzberg MS, Min RJ, Sacks D (2006) Reporting standards for endovascular treatment of lower extremity deep vein thrombosis. *J Vasc Interv Radiol* 17:417–434
 49. Kuo WT, Gould MK, Louie JD, Rosenberg JK, Sze DY, Hofmann LV (2009) Catheter-directed therapy for the treatment of massive pulmonary embolism: systematic review and meta-

- analysis of modern techniques. *J Vasc Interv Radiol* 20:1431–1440
50. Goldhaber SZ (2007) Percutaneous mechanical thrombectomy for acute pulmonary embolism: a double-edged sword. *Chest* 132:363–365
 51. Goldhaber SZ (2007) Percutaneous mechanical thrombectomy for massive pulmonary embolism: improve safety and efficacy by sharing information. *Catheter Cardiovasc Interv* 70:807–808
 52. Kucher N (2007) Catheter embolectomy for acute pulmonary embolism. *Chest* 132:657–663
 53. Kearon C, Akl EA, Comerota AJ, Prandoni P, Bounameaux H, Goldhaber SZ, Nelson ME, Wells PS, Gould MK, Dentali F, Crowther M, Kahn SR (2012) Antithrombotic therapy for VTE disease: antithrombotic therapy and prevention of thrombosis, 9th ed.: American College of Chest Physicians evidence-based clinical practice guidelines. *Chest* 141:e419S–e494S
 54. Kucher N, Boekstegers P, Muller O, Kupatt C, Beyer-Westendorf J, Heitzer T, Tebbe U, Horstkotte J, Muller R, Blessing E, Greif M, Lange P, Hoffmann RT, Werth S, Barmeyer A, Hartel D, Grunwald H, Empen K, Baumgartner I (2014) Randomized controlled trial of ultrasound-assisted catheter-directed thrombolysis for acute intermediate-risk pulmonary embolism. *Circulation* 129:479–486
 55. Piazza G, Hohlfelder B, Jaff MR, Ouriel K, Engelhardt TC, Sterling KM, Jones NJ, Gurley JC, Bhatheja R, Kennedy RJ, Goswami N, Natarajan K, Rundback J, Sadiq IR, Liu SK, Bhalla N, Raja ML, Weinstock BS, Cynamon J, Elmasri FF, Garcia MJ, Kumar M, Ayerdi J, Soukas P, Kuo W, Liu P, Goldhaber SZ (2014) A prospective, single-arm, multicenter trial of ultrasound-facilitated catheter-directed low-dose fibrinolysis for acute massive and submassive pulmonary embolism (seattle ii) Presented on March 30, 2014 at the American College of Cardiology Annual Scientific Sessions, Washington, D.C
 56. Semba CP, Dake MD (1994) Iliofemoral deep venous thrombosis: aggressive therapy with catheter-directed thrombolysis. *Radiology* 191:487–494
 57. Enden T, Haig Y, Klow N et al (2012) Long-term outcomes after additional catheter-directed thrombolysis versus standard treatment for acute iliofemoral deep vein thrombosis (the CaVenT study): a randomised controlled trial. *Lancet* 379(9810):31–38
 58. Kasirajan K, Gray B, Ouriel K (2001) Percutaneous Angiojet thrombectomy in the management of extensive deep venous thrombosis. *J Vasc Interv Radiol* 12:179–185
 59. Vedantham S, Vesely TM, Parti N, Darcy M, Hovsepian DM, Picus D (2002) Lower extremity venous thrombolysis with adjunctive mechanical thrombectomy. *J Vasc Interv Radiol* 13(10):1001–1008
 60. Uflacker R (1997) Mechanical thrombectomy in acute and subacute thrombosis with use of the Amplatz device: arterial and venous applications. *J Vasc Interv Radiol* 8:923–932
 61. Delomez M, Beregi J, Willoteaux S, Bauchart JJ, d’Othee BJ, Asseman P et al (2001) Mechanical thrombectomy in patients with deep venous thrombosis. *Cardiovasc Interv Radiol* 24:42–48
 62. Vedantham S, Vesely TM, Sicard GA et al (2004) Pharmacomechanical thrombolysis and early stent placement for iliofemoral deep vein thrombosis. *J Vasc Interv Radiol* 15:565–574
 63. Bush RL, Lin PH, Bates JT, Mureebe L, Zhou W, Lumsden AB (2004) Pharmacomechanical thrombectomy for treatment of symptomatic lower extremity deep venous thrombosis: safety and feasibility study. *J Vasc Surg* 40:965–970
 64. Lin PH, Zhou W, Dardik A, Mussa F, Kougias P, Hedayati N et al (2006) Catheter-direct thrombolysis versus pharmacomechanical thrombectomy for treatment of symptomatic lower extremity deep venous thrombosis. *Am J Surg* 192(6):782–788
 65. Kim HS, Patra A, Paxton BE, Khan J, Streiff MB (2006) Adjunctive percutaneous mechanical thrombectomy for lower-extremity deep vein thrombosis: clinical and economic outcomes. *J Vasc Interv Radiol* 17:1099–1104
 66. Cynamon J, Stein EG, Dym J, Jagust M, Binkert CA, Baum RA (2006) A new method for aggressive management of deep vein thrombosis: retrospective study of the power pulse technique. *J Vasc Interv Radiol* 17:1043–1049
 67. O’Sullivan G, Lohan DG, Gough N, Cronin CG, Kee ST (2007) Pharmacomechanical thrombectomy of acute deep vein thrombosis with the Trellis-8 isolated thrombolysis catheter. *J Vasc Interv Radiol* 18(6):715–724
 68. Vedantham S, Goldhaber SZ, Kahn SR, Julian J, Magnuson E, Jaff MR, Murphy TP, Cohen DJ, Comerota AJ, Gornik HL, Razavi MK, Lewis L, Kearon C (2013) Rationale and design of the Attract Study: a multicenter randomized trial to evaluate pharmacomechanical catheter-directed thrombolysis for the prevention of postthrombotic syndrome in patients with proximal deep vein thrombosis. *Am Heart J* 165(4):523–533
 69. Goldenberg NA, Branchford B, Wang M, Ray C Jr, Durham JD, Manco-Johnson MJ (2011) Percutaneous mechanical and pharmacomechanical thrombolysis for occlusive deep vein thrombosis of the proximal limb in adolescent subjects: findings from an institution-based prospective inception cohort study of pediatric venous thromboembolism. *J Vasc Interv Radiol* 22(2):121–132
 70. Baker R, Samuels S, Benenati JF et al (2012) Ultrasound-accelerated vs standard catheter-directed thrombolysis—a comparative study in patients with iliofemoral deep vein thrombosis. *J Vasc Interv Radiol* 23:1460–1466
 71. Kucher N, Rossi E, De Rosa M, Goldhaber SZ (2006) Massive pulmonary embolism. *Circulation* 113(4):577–582
 72. Stein PD, Matta F, Keyes DC, Willyerd GL (2012) Impact of vena cava filters on in-hospital case fatality rate from pulmonary embolism. *Am J Med* 125:478–484
 73. Stein PD, Alnas M, Beemath A, Patel NR (2007) Outcome of pulmonary embolectomy. *Am J Cardiol* 99:421–423
 74. Stein PD, Matta F (2012) Case fatality rate with pulmonary embolectomy for acute pulmonary embolism. *Am J Med* 125:471–477
 75. Meneveau N, Seronde MF, Blonde MC et al (2006) Management of unsuccessful thrombolysis in acute massive pulmonary embolism. *Chest* 129:1043–1050
 76. Leacche M, Unic D, Goldhaber SZ et al (2005) Modern surgical treatment of massive pulmonary embolism: results in 47 consecutive patients after rapid diagnosis and aggressive surgical approach. *J Thorac Cardiovasc Surg* 129(5):1018–1023
 77. Sista A, Friedman OA, Horowitz JM, Salemi A (2013) Building a pulmonary embolism lysis practice. *Endovasc Today* 12:61–64
 78. Klok FA, van Kralingen KW, van Dijk AP et al (2010) Quality of life in long-term survivors of acute pulmonary embolism. *Chest* 138:1432–1440
 79. Stevinson BG, Hernandez-Nino J, Rose G, Kline JA (2007) Echocardiographic and functional cardiopulmonary problems 6 months after first-time pulmonary embolism in previously healthy patients. *Eur Heart J* 28:2517–2524
 80. Klok FA, Cohn DM, Middeldorp S, Scharloo M, Buller HR, van Kralingen KW, Kaptein AA, Huisman MV (2010) Quality of life after pulmonary embolism: validation of the PEmb-QoL Questionnaire. *J Thromb Haemost* 8(3):523–532