

2016

Aromatase inhibition remodels the clonal architecture of estrogen-receptor-positive breast cancers

Christopher A. Miller

Washington University School of Medicine in St. Louis

Yevgeniy Gindin

Washington University School of Medicine in St. Louis

Charles Lu

Washington University School of Medicine in St. Louis

Obi L. Griffith

Washington University School of Medicine in St. Louis

Malachi Griffith

Washington University School of Medicine in St. Louis

See next page for additional authors

Follow this and additional works at: http://digitalcommons.wustl.edu/open_access_pubs

Recommended Citation

Miller, Christopher A.; Gindin, Yevgeniy; Lu, Charles; Griffith, Obi L.; Griffith, Malachi; Shen, Dong; Hoog, Jeremy; Li, Tiandao; Larson, David E.; Watson, Mark; Davies, Sherri R.; Snider, Jacqueline; Walsh, Thomas; Colditz, Graham A.; DeSchryver, Katherine; Wilson, Richard K.; Mardis, Elaine R.; Ellis, Matthew J.; and et al, "Aromatase inhibition remodels the clonal architecture of estrogen-receptor-positive breast cancers." *Nature Communications*.7, 12498. (2016).
http://digitalcommons.wustl.edu/open_access_pubs/5210

Authors

Christopher A. Miller, Yevgeniy Gindin, Charles Lu, Obi L. Griffith, Malachi Griffith, Dong Shen, Jeremy Hoog, Tiandao Li, David E. Larson, Mark Watson, Sherri R. Davies, Jacqueline Snider, Thomas Walsh, Graham A. Colditz, Katherine DeSchryver, Richard K. Wilson, Elaine R. Mardis, Matthew J. Ellis, and et al

ARTICLE

Received 6 Jan 2016 | Accepted 7 Jul 2016 | Published 9 Aug 2016

DOI: 10.1038/ncomms12498

OPEN

Aromatase inhibition remodels the clonal architecture of estrogen-receptor-positive breast cancers

Christopher A. Miller^{1,2}, Yevgeniy Gindin^{1,†}, Charles Lu^{1,†}, Obi L. Griffith^{1,3,4}, Malachi Griffith^{1,4,5}, Dong Shen^{1,†}, Jeremy Hoog³, Tiandao Li¹, David E. Larson^{1,5}, Mark Watson⁶, Sherri R. Davies³, Kelly Hunt⁷, Vera J. Suman⁸, Jacqueline Snider³, Thomas Walsh⁹, Graham A. Colditz^{4,9}, Katherine DeSchryver^{3,9}, Richard K. Wilson^{1,2,3,4,5}, Elaine R. Mardis^{1,3,4,5} & Matthew J. Ellis^{1,3,10}

Resistance to oestrogen-deprivation therapy is common in oestrogen-receptor-positive (ER+) breast cancer. To better understand the contributions of tumour heterogeneity and evolution to resistance, here we perform comprehensive genomic characterization of 22 primary tumours sampled before and after 4 months of neoadjuvant aromatase inhibitor (NAI) treatment. Comparing whole-genome sequencing of tumour/normal pairs from the two time points, with coincident tumour RNA sequencing, reveals widespread spatial and temporal heterogeneity, with marked remodelling of the clonal landscape in response to NAI. Two cases have genomic evidence of two independent tumours, most obviously an ER- 'collision tumour', which was only detected after NAI treatment of baseline ER+ disease. Many mutations are newly detected or enriched post treatment, including two ligand-binding domain mutations in *ESR1*. The observed clonal complexity of the ER+ breast cancer genome suggests that precision medicine approaches based on genomic analysis of a single specimen are likely insufficient to capture all clinically significant information.

¹McDonnell Genome Institute, Washington University School of Medicine, St Louis, Missouri 63108, USA. ²Department of Medicine, Division of Genomics and Bioinformatics, Washington University School of Medicine, St Louis, Missouri 63108, USA. ³Department of Medicine, Division of Oncology, Washington University School of Medicine, St Louis, Missouri 63108, USA. ⁴Siteman Cancer Center, Washington University School of Medicine, St Louis, Missouri 63108, USA. ⁵Department of Genetics, Washington University School of Medicine, St Louis, Missouri 63108, USA. ⁶Department of Pathology and Immunology, Washington University School of Medicine, St Louis, Missouri 63108, USA. ⁷Department of Breast Surgery, MD Anderson Cancer Center, Houston, Texas 77030, USA. ⁸Alliance Statistics and Data Center, Mayo Clinic, Rochester, Minnesota 55905, USA. ⁹Department of Surgery, Division of Public Health, St Louis Breast Tissue Registry, Washington University School of Medicine, St Louis, Missouri 63108, USA. ¹⁰Lester and Sue Smith Breast Center, Baylor College of Medicine, Houston, Texas 77030, USA. † Present addresses: Clontech Laboratories, 1290 Terra Bella Ave, Mountain View, California 94043, USA (Y.G.); AbbVie, 1401 Sheridan Rd, North Chicago, Illinois 60064, USA (C.L.); AstraZeneca, 1 MedImmune Way, Gaithersburg, Maryland 20878, USA (D.S.). Correspondence and requests for materials should be addressed to E.R.M. (email: emardis@wustl.edu) or to M.J.E. (email: mjellis@bcm.edu).

Despite the success of therapeutic approaches that suppress oestrogen production or inhibit ER function, resistance to endocrine therapy is common and accounts for the majority of breast cancer deaths¹. The identification of endocrine resistance in primary ER+ breast cancer is a critical endeavour that has been widely explored^{2,3} but the current transcriptional profiling approaches do not typically identify drivers of resistance, nor do they take into account resistance mechanisms that evolve from a minor subpopulation of cells.

Breast carcinomas are driven by accumulated somatic alterations. Those present in the initiating cell define the founder clone and persist in every cell of the tumour. As tumours grow, they accumulate additional mutations and these may give rise to subclonal populations with distinct characteristics^{4,5}. These subpopulations compete and evolve^{6–9} and often harbour mutations that eventually confer resistance to specific therapies^{9–13}. When this occurs, the resistant tumour cells will represent a proportionally larger fraction of the tumour mass, as the susceptible population diminishes.

Another source of heterogeneity is synchronous breast cancer, most obviously when the disease is bilateral at diagnosis, or when two tumours are far apart in the same breast. These events are clinically significant as bilateral disease can signify the presence of a germline predisposition as well as a worse prognosis¹⁴. However when several independent breast cancers evolve in very close proximity, it can be impossible, without genomic techniques, to diagnose ‘collision tumours’ with different founder clones. The incidence of collision tumours of the breast and their clinical significance is therefore unknown, with most of the literature focused on tumours of different tissue origins growing together at a metastatic site¹⁵.

While subclonal heterogeneity has been extensively studied in breast cancer^{16,17}, little is known about the interplay between clonal evolution and therapy response. The effects of short-term (14 day) aromatase inhibitor (AI) treatment have been explored on the transcriptomic level using microarrays^{18,19}, but it is unclear what

population changes these expression differences reflect, that is, whether existing cells are being ‘remodelled’ at the transcriptional level, or whether the changes are due to continued expansion of cells harbouring resistance mutations. The effects of longer-term AI inhibition at the whole-genome level remain unknown.

In this study, we provide a first step towards answering these questions by comprehensively characterizing the effects of neoadjuvant aromatase inhibitor (NAI) therapy on the genomes and transcriptomes of a group of ER-positive breast tumours. From a set of previously whole-genome sequenced (WGS) tumours²⁰, we selected 22 Luminal A or Luminal B subtype tumours classified as either ‘aromatase-inhibitor-sensitive’ ($N=12$, median surgical Ki67 = 1.1%, range 0–7.0%) or ‘aromatase-inhibitor-resistant’ ($N=10$, median surgical Ki67 24.6%, range 10.4–47.1%). For each of these patients, we then performed WGS on matching tumours sampled by core biopsy at surgical resection, as well as on additional core biopsies taken from a subset of the baseline (pre-treatment, $N=5$) and surgical resection tumours (post-treatment, $N=6$). RNA sequencing was performed on 20 of the baseline tumours and on 18 of the surgical tumours. To obtain additional information on treatment emergent mutations, a subset of these tumours, along with 38 additional cases were analysed at greater sequencing depth using targeted capture with a gene panel. Together, these data allow us to characterize the genomic landscapes and clonal architectures of breast tumours and show that they are often dramatically altered during NAI therapy.

Results

Mutational landscape. Comprehensive genomic characterization of these 22 patients’ tumours (Table 1, Supplementary Data 1) revealed a total of 42,300 somatic single-nucleotide variants (SNVs) and indels in non-repetitive loci (tiers 1–3; ref. 21) of all tumour samples, with a median of 947 somatic SNVs and 23 indels per tumour (Supplementary Data 2 and 3). A total of 2,061 somatic

Table 1 | Samples whole-genome sequenced in this study and a description of key clinical and biomarker parameters.

Case	Age	Intrinsic subtype		Proportion cells Ki67 positive		Ki67 response	ER allred		Clonal instability index
		BL	SURG	BL	SURG		BL	SURG	
BRC10	57	LumB	LumA	0.492	0.035	Sensitive	6	4	0.246
BRC11	84	LumB	LumB	0.25	0.417	Resistant	7	6	0.097
BRC14	86	LumB	LumA	0.442	0.012	Sensitive	7	4	0
BRC15	83	LumB	LumA	0.238	0.01	Sensitive	7	7	0.579
BRC17	63	LumB	LumA	0.32	0.019	Sensitive	7	8	—
BRC18	85	LumB	LumA	0.125	0	Sensitive	8	7	—
BRC20	61	LumB	LumB	0.456	0.349	Resistant	4	6	0.856
BRC21	73	LumA	Normal	0.058	0.019	Sensitive	7	6	1
BRC22	64	LumA	LumA	0.008	0	Sensitive	6	7	0.533
BRC24	51	LumB	LumB	0.152	0.155	Resistant	7	7	0.403
BRC26	71	LumB	LumA	0.101	0.07	Sensitive	7	5	0.499
BRC30	60	LumB	LumA	0.256	0.183	Resistant	5	5	0.371
BRC32	54	LumA	LumA	0.1	0	Sensitive	7	6	0.450
BRC37	56	LumB	LumB	0.76	0.308	Resistant	6	4	0.359
BRC38	78	LumB	Her2	0.162	0.471	Resistant	8	2	1
BRC39	79	LumB	LumA	0.356	0.124	Resistant	6	5	0.841
BRC40	66	LumA	LumA	0.076	0.008	Sensitive	8	8	0.904
BRC41	55	LumB	LumA	0.412	0.008	Sensitive	8	6	0.535
BRC42	74	LumB	LumA	0.081	0.022	Sensitive	—	8	0.341
BRC48	66	LumA	LumA	ND	0.346	Resistant	6	6	—
BRC49	56	LumA	LumA	0.077	0.152	Resistant	8	8	0.715
BRC50	78	LumA	LumA	0.195	0.104	Resistant	4	5	0.856

ND, not determined.

The clonal instability index is a metric of the amount of evolutionary change observed in the tumour, where higher numbers represent larger shifts and an index of 1 indicates completely unrelated tumours were present. A value of 0 indicates a monoclonal tumour with no post-treatment shift in clonality. Methodology to calculate the clonal instability index is defined in detail in the ‘Methods’ section. BL refers to baseline and SURG the pathology specimen from the surgical resection after 16 to 18 weeks of AI therapy.

variants were in the coding regions of the resulting proteins, with a median of 55 per patient. One tumour, BRC26, harboured a low mutation count (55), likely due to lower sequence coverage (Supplementary Data 4). Coding variant counts included 1,166 coding-region SNVs and indels not detected in the original study of the baseline tumours, obtained both from analysis of the surgical samples and via deeper sequencing coverage of baseline samples. Of these, 256 were absent or low frequency (<5% variant allele fraction (VAF) in the baseline samples, making them challenging or impossible to detect from standard-depth WGS without information from postsurgical or second core biopsy samples. The number of detectable low-frequency mutations was also impacted by tumour purity, which ranged from 12 to 100% (Supplementary Data 4). We identified 72 expressed coding mutations specific to the surgical samples, based on our limits of detection (Supplementary Note 1).

Copy number profiles were largely concordant between baseline and surgical samples, with a few notable exceptions (Supplementary Fig. 1). Eight samples harboured at least one event greater than 100 Mb in size that differed between the baseline and surgical samples, including one tumour (BRC48) that changed from diploid to triploid over the course of treatment. We also detected and validated a total of 1,695 structural variants (SVs) across 55 samples. The mean value was 30 SVs per sample (range 1 to 141) and had no significant correlation with either AI response or EFS (Supplementary Data 5). Overall, 71.8% of validated SVs present in the surgical samples were also detected in the baseline samples. Gene fusion-causing alterations were detected in 21 of 22 patients, with only

moderate concordance between multiple samples from the same individual (Supplementary Note 2, Supplementary Data 6). No fusions involving *ESR1* were observed. Transcriptome analysis revealed few differentially expressed genes and unsupervised hierarchical clustering did not identify clear expression signatures that distinguished AI-sensitive or -resistant tumours (Supplementary Figs 2–6, Supplementary Note 3, Supplementary Data 7 and 8).

Subclonal inference by clustering of variant allele fractions.

Using somatic mutations from all the samples for each patient, we applied the SciClone algorithm²² to cluster the VAFs of copy-number neutral SNVs, thus inferring the clonal architecture of each sample (Supplementary Fig. 7). Two samples, BRC17 and BRC48, had large-scale ploidy changes, which prevented accurate automated clustering of the clonal subpopulations, and a third case, BRC18, had a very high mutation rate and insufficient separation between clusters. The remaining 19 cases included 11 time points with multiple core biopsies. Several patterns of altered subclonal composition and evolution were observed in the context of AI treatment response, and are described below.

Intertwined tumours of independent origin. In one patient (BRC38), the surgical tumour shared no somatic SNVs or indels with the baseline tumour, despite having matching identity from germline SNP concordance (Fig. 1a). The ER+ baseline tumour contained a *CDH1* splice-site mutation in the founder clone, and

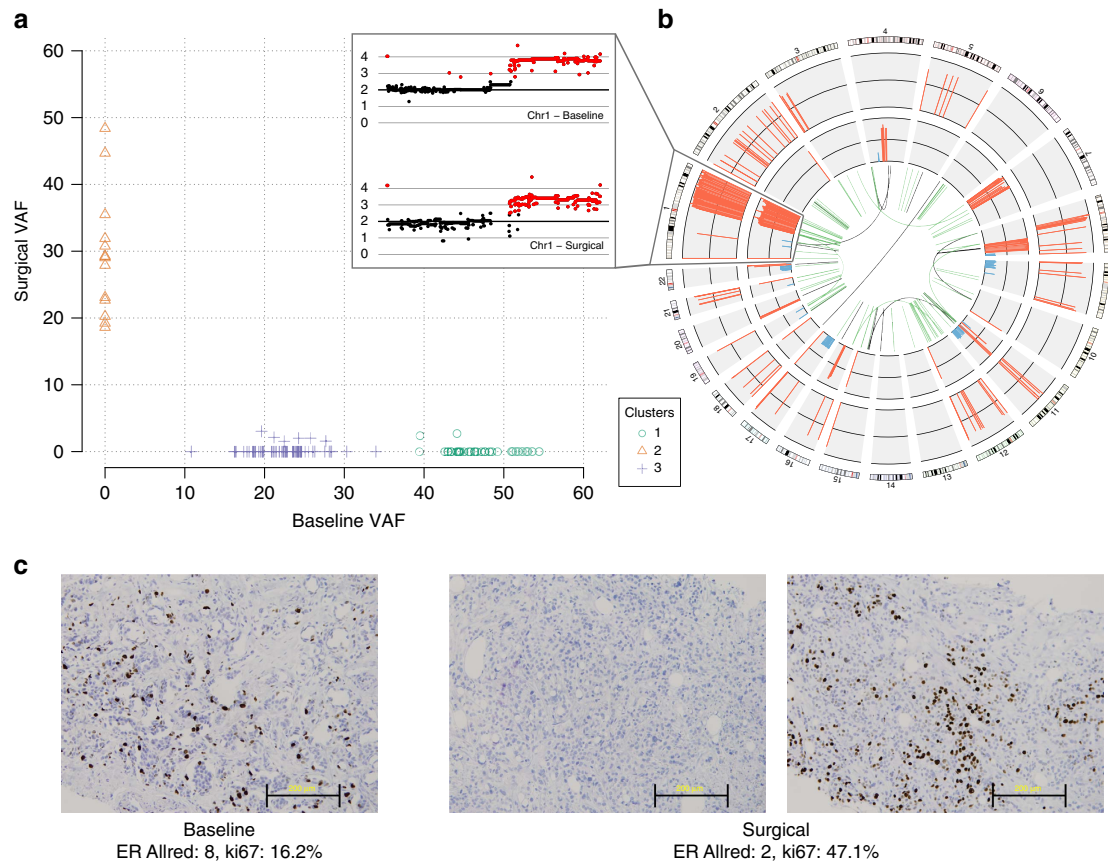


Figure 1 | Collision tumours of independent origin and ER status in BRC38. (a) Clonality plot comparing the VAFs of SNVs in the baseline and surgical samples. (b) Gene fusions and copy number alterations. Outer ring: CN alterations in the baseline sample (amplifications in red, deletions in blue). Inner ring: CN alterations in the surgical sample. Centre: gene fusion events that were specific to the baseline (green) or surgical sample (brown). Expansion: CN alterations on chromosome 1. (c) Immunohistochemistry results indicate the ER status of one baseline (left) and two surgical samples (middle, right). Scale bars, 200 μm.

subclonal missense mutations in *FOXA1* and *FOXQ1*. The surgical tumour specifically lacked these mutations or indeed other SNVs or indels in genes strongly implicated in cancer, but had focal amplifications containing *MYC*, *EGFR* and *CCND1* (Fig. 1b). Although the baseline tumour also had amplified *MYC* and *CCND1*, these were distinct events with breakpoints different than those observed in the surgical tumour. Both tumours contained numerous other copy number alterations, but none were shared except for a 1q amplification (with unresolvable breakpoints in the centromere). This event may have occurred in a shared cell of origin, or may be a case of homoplasmy. Several gene fusions also were detected with no overlap between these two ‘collision’ tumours.

RNAseq data from this patient’s tumour samples reveal a transition from baseline ER-positive (FPKM 131.65) to post-treatment ER-negative (FPKM of 0.99), and ER immunohistochemistry supported this observation, with ER Allred scores of 8 in the pre-treatment sample and 2 in the sequenced surgical sample (Fig. 1c–e, Supplementary Data 7). A second IHC result from a different portion of the post-treatment surgical sample showed residual ER-positivity, suggesting that the two tumours continued to co-exist, but that the surgical core we sequenced did not capture the ER-positive residual tumour. There was a 3-fold increase in Ki67 between baseline and surgery and this patient was classified as AI-resistant.

A second patient, BRC21, contained genomic evidence for a cryptic second tumour, inferred via a pattern of subclonal evolution that is impossible to explain with only a single tumour (Supplementary Fig. 7). Specifically, the variants in cluster 3 shifted from nearly absent at baseline to a VAF that was greater than any other cluster at surgery. This pattern suggests retention of the baseline tumour, coupled with the emergence of a second tumour containing a *PIK3CA* mutation (H1047R). These two tumours comprise 19 and 28 percent of the surgical sample, respectively, and this combined percentage is more parsimonious with the 70% estimate from pathology than would be a single-tumour solution with purity of less than 30%. Unlike BRC38, both appear to be ER+ tumours, with an Allred score at surgery of 6. Though both measures are limited somewhat by the low purity of the surgical sample, this patient was classified as AI-sensitive, and switched from an intrinsic subtype of LumA to Normal-like.

Simple and clonally stable tumours. Only a single sample, BRC14, harboured no detectable subclonal cell populations, either at baseline or following AI treatment (Fig. 2). This tumour was categorized as AI-sensitive. In keeping with AI responsiveness, the tumour intrinsic subtype switched from Luminal B to Luminal A.

Complex and dynamic tumours. Eighteen patients (81.8%) had tumours containing multiple subclonal cell populations, some of which were substantially altered during the course of treatment. In BRC15, the two baseline samples had similar clonal composition, but the two surgical samples contained significant spatial heterogeneity as well as extensive remodelling of the clonal architecture (Fig. 3, Supplementary Note 4). This tumour had over 2.5-fold higher *ESR1* mRNA expression levels at surgery than at baseline and was sensitive to aromatase-inhibitor treatment as determined by the drop in Ki67 level from 24 to 1%.

Four-dimensional clustering revealed a founder clone and four subclones. The founder clone contained expressed mutations in *PIK3CA* (H1047R) and *ARID2* (frameshift insertion). Cluster two was the dominant subclone in the pre-treatment sample and post-treatment sample 2, but comprised only about 11% of post-treatment sample 1. Cluster three, which contained expressed mutations in *BRAF* (K601E) and *MSH6* (nonsense), made up 92% of the baseline tumour, but was absent in the post-treatment samples, suggesting that it harboured enhanced susceptibility to oestrogen deprivation. Cluster four was undetectable in the baseline samples (limit of detection ~1% VAF), but constituted 89% of post-treatment core 2, where clonal expansion may have been driven by a second mutation in *PIK3CA* (G118D). Similarly, cluster 5 was absent pre-treatment but present only in post-treatment core 1. The copy number profiles between all samples were largely concordant, with notable differences including amplification of chromosome 8 in surgical sample 1 and deletion of one copy of chromosome 9 in surgical sample 2. Three samples from the periphery of this tumour (all classified as Ductal Carcinoma *in situ*) were obtained from the surgical formalin-fixed block; all carried the founder clone *BIRC6* and *PIK3CA* mutations, and one carried the *BRAF* mutation found in cluster 3. Additional descriptions of these sample genotypes can be found in the Supplementary Note 5 and Supplementary Data 8.

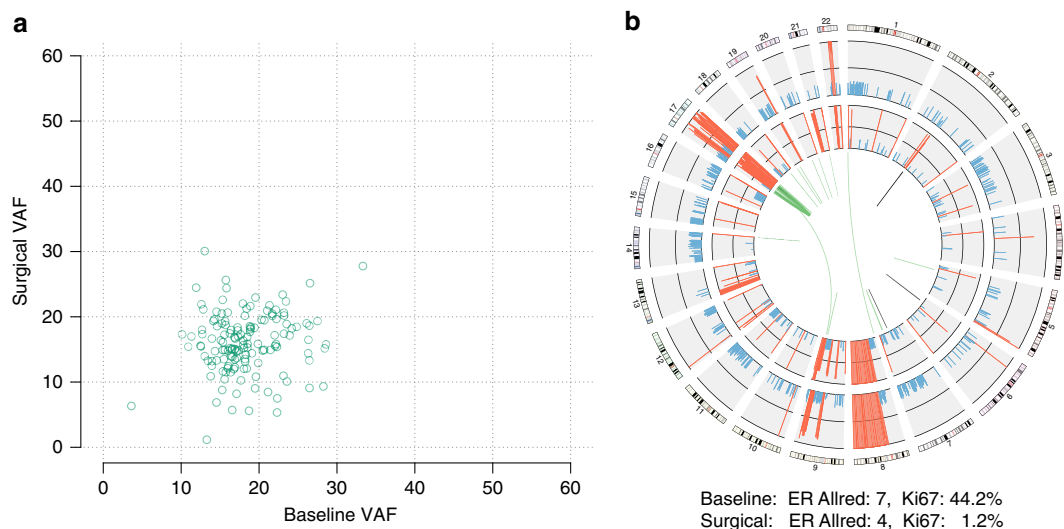


Figure 2 | Simple and stable clonal structure in BRC14. (a) Clonality plot comparing the variant allele fraction of SNVs in the baseline and surgical samples. (b) Gene fusions and copy number alterations. Outer ring: CN alterations in the baseline sample (amplifications in red, deletions in blue). Inner ring: CN alterations in the surgical sample. Centre: gene fusion events that were specific to the baseline (green) or surgical sample (brown).

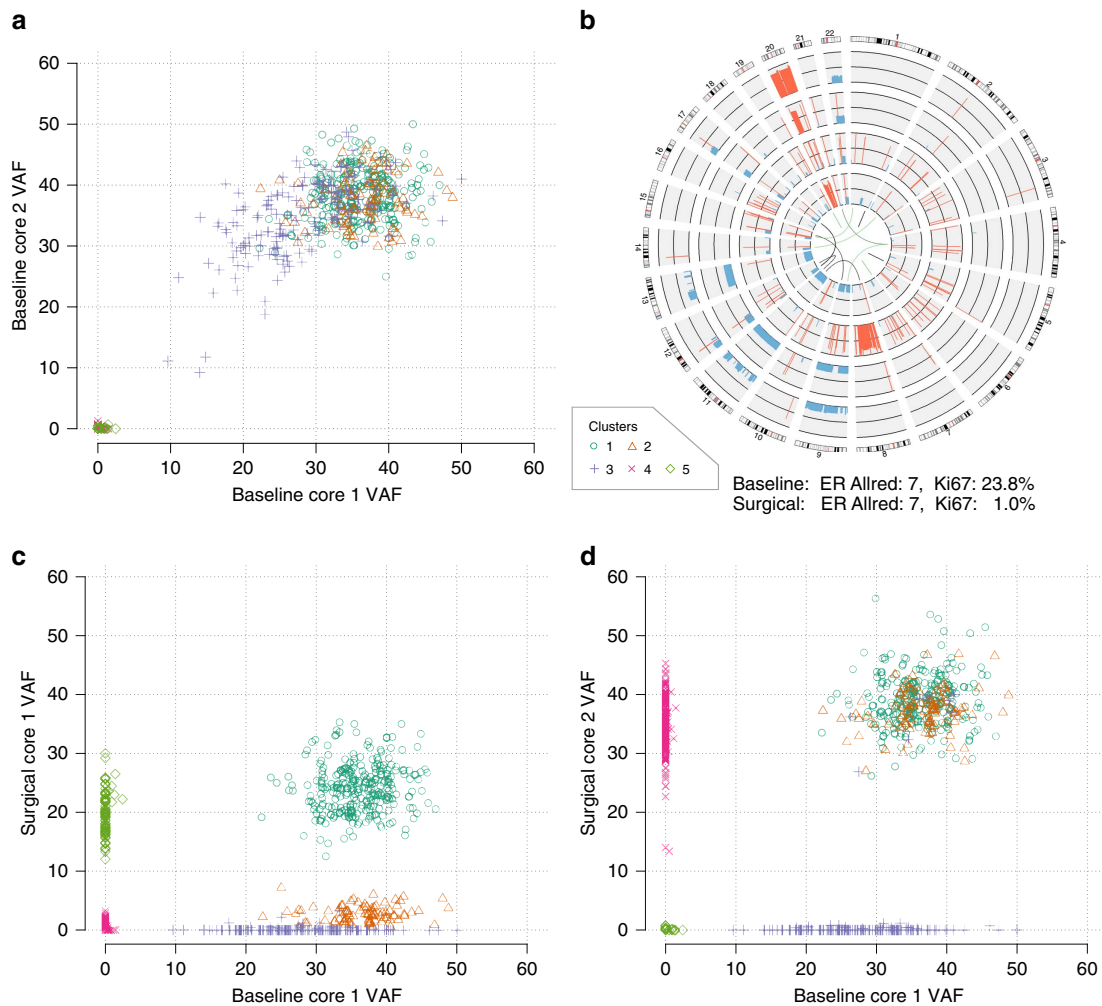


Figure 3 | Subclonal complexity and response to AI inhibition in BRC15. Clonality plots derived from four-dimensional clustering of SNV VAFs in distinct core samples. **(a)** Two samples separated spatially in the baseline tumour. **(c,d)** The first baseline core sample compared with two cores taken from the surgical sample. **(b)** Gene fusions and copy number alterations in (from outer ring to inner ring) Baseline core 1, Baseline core 2, Surgical core 1, Surgical core 2 (amplifications in red, deletions in blue). Centre: gene fusion events that are baseline sample-specific (green), surgical sample-specific (brown) or shared (black).

BRC41 provides another striking example of tumour evolution under oestrogen deprivation, with almost complete loss of a subclone that comprised 86% of the baseline tumour cells (Supplementary Fig. 7). This subclone loss was coincident with the emergence of a rare subclone that was present in about 2% of baseline tumour cells, but expanded to 84% of the surgical sample. The responsive baseline subclone included an expressed *KDM8* (R227H) histone demethylase mutation. The emergent resistant subclone contained an expressed mutation in *BCAS3* (K533N), a gene with some evidence linking it to tamoxifen resistance²³. Unlike BRC15, the paired core samples taken at baseline and at surgery were highly concordant, suggesting minimal spatial heterogeneity in this tumour.

In addition to these two cases, 13 other tumours were computationally classified as clonally complex and dynamic (Supplementary Fig. 7). To do so, we used the mean absolute difference in clonal fractions before and after treatment to derive a clonal instability index, where 0 indicates no change in clonal architecture and 1 indicates completely distinct tumours (see ‘Methods’ section, Supplementary Data 10). Among the 15 patients in this complex and dynamic group, we observed clonal instability values ranging from 0.25 to 0.90 (median 0.53), reflecting the large degree of temporal change in clonality during

NAI treatment. Three additional cases were manually assigned to this category, for a total of 18 complex and dynamic tumours. Of these, 10 were characterized as responsive and 8 were resistant to AI. There was no significant correlation between clonal instability and AI response, as measured by either reduction in Ki67 or Ki67 at surgery. We observed intrinsic subtype switching in nine of these samples, with all changing from Luminal B to Luminal A.

Complex and stable tumours. Only one sample (BRC11) had detectable subclonal populations, but showed little evidence of treatment-induced remodelling, with a clonal instability score of 0.097 (Fig. 4). The likely founder clone carried missense mutations in *ARID1A* (p.A1239T), *PIK3CA* (p.H1047R) and a frame-shift deletion in *TP53*. The tumour was classified as treatment-resistant with Ki67 rising from 0.25 to 0.417 at surgery.

Targeted sequencing and treatment-associated heterogeneity. To examine AI treatment-associated changes at the level of a sequencing panel typical of clinical NGS-based diagnostic assays, we developed a hybrid capture panel to sequence 83 breast cancer-related genes in 19 of the WGS cases, plus an additional 38

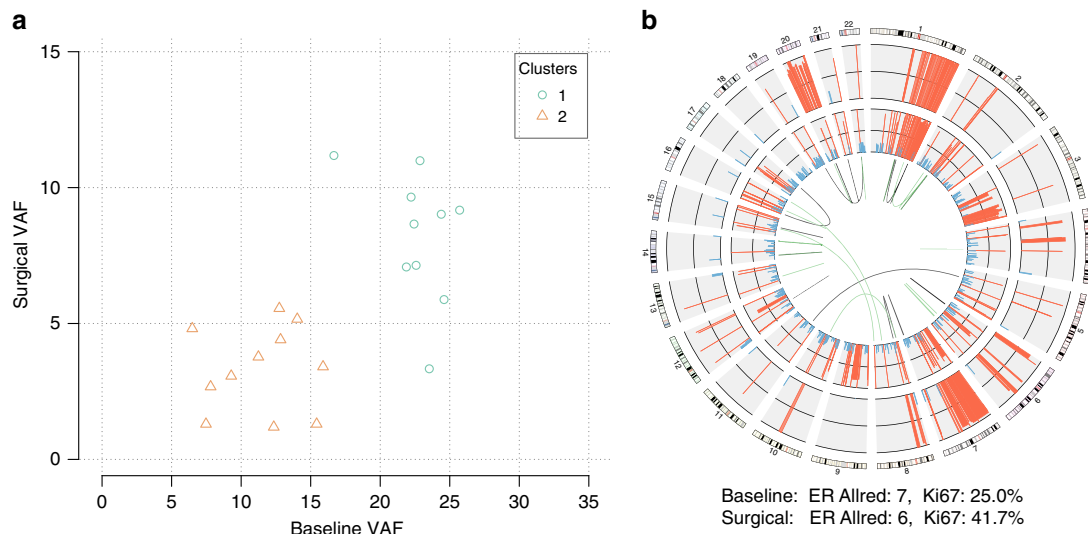


Figure 4 | Complex and stable clonal structure in BRC11. (a) Clonality plot comparing the variant allele fraction of SNVs in the baseline and surgical samples. (b) Gene fusions and copy number alterations. Outer ring: CN alterations in the baseline sample (amplifications in red, deletions in blue). Inner ring: CN alterations in the surgical sample. Centre: gene fusion events that were specific to the baseline (green) or surgical sample (brown).

pre/post pairs (Table 2, Supplementary Note 5, Supplementary Data 11 and 12). Of these 57 sample sets, 38 (from both groups) had paired baseline and surgical samples as described above, the other 19 had samples from baseline and end of treatment (most of which were triaged to chemotherapy). The mean depth of coverage was $\times 103.4$ in this assay, compared with a mean of $\times 44.1$ in the WGS and $\times 79.4$ from the combined WGS and validation sequencing on the original 22 patients

We identified a total of 255 mutations from this panel test (median 3 per patient), three of which occur in genes that are high-priority drug targets. The *ESR1* D538G mutation is a well-recognized ligand-binding domain (LBD) mutation, associated with ligand-independent transcriptional activity^{24,25} and was present only in the post-treatment sample (11% VAF). The low post-treatment Ki67 suggests, however, that at 11% the *ESR1* D538G allele was not yet sufficiently dominant to produce elevated proliferation despite AI treatment. The second treatment-emergent LBD mutation was K481N, present at 14% VAF at baseline and $\sim 40\%$ VAF post treatment. The increasing VAF of this K481N mutation was associated with Ki67-defined resistance, since the Ki67 was 11% in the post-treatment sample, sufficiently high to elevate the risk of relapse²⁶. A third LBD mutation, E380Q, was present at a low frequency at baseline without enrichment suggesting that this mutation does not strongly confer AI resistance, as suggested by an earlier study of ER+ patient-derived xenografts¹⁷.

To determine whether somatic mutations in particular genes were driving clonal response, we calculated the difference between pre-treatment and post-treatment VAFs for each gene with at least five non-silent mutations (Supplementary Fig. 3). Though *NCOR1* mutations, in particular, trended towards higher VAFs in the post-treatment samples, a larger cohort would be needed to establish significance in the context of multiple testing correction. There also was no significant difference in VAF shifts between mutations in different *PIK3CA* hotspots (near amino acids 1,047 or 543) or between mutations in different TP53 domains (DNA-binding versus other).

Discussion

In this study, we performed deep genomic characterization of primary ER+ breast tumours at baseline and after 16 to 18 weeks

of AI therapy. By combining genomic sequencing data at high depth on mutated sites, copy number and structural variant discovery, comparisons of RNA expression to derive intrinsic subtypes, and clinical pathology markers such as Ki67 and ER Allred scores, we have generated comprehensive information about the range of changes that occur when ER+ breast cancers are subjected to oestrogen deprivation. Overall, four genomic patterns were observed: (1) two intertwined but genomically separate ‘collision tumour’ patterns; (2) ‘clonally simple and treatment stable’ patterns; (3) ‘clonally complex and treatment dynamic’ patterns; and (4) ‘clonally complex and treatment stable’ patterns.

In two cases, we observed collision tumours comprised separate malignancies, and in one case an ER+ tumour with indolent clinical features was replaced by an ER- tumour with aggressive clinical features. Presumably the ER- tumour genotype was missed in the pre-treatment sample, and became more readily detectable over time due to the regression of the ER+ tumour. It is well recognized that a subset of ER+ breast cancers have ‘lost’ ER expression upon relapse²⁷, and earlier studies report that ER loss in the context of neoadjuvant endocrine therapy is associated with a much higher risk of relapse²⁶. Together, these suggest that comparative ER testing should be repeated on residual breast tumours after NAI therapy to identify discernable changes in ER positivity.

Clonally stable tumours were rare in this cohort, with only one simple and one complex tumour. The simple tumour (BRC14) switched from Luminal B to Luminal A with a dramatic decline in Ki67 (44.2 to 1.2%). The complex tumour (BRC11) likely contained innate resistance in the founder clone (with no evidence of sensitivity to the antiproliferative effects of AI), which enabled it to maintain both its clonal structure and its intrinsic subtype despite treatment.

Most tumours analysed (18 of 22) were clonally heterogeneous and contained subclonal populations whose relative proportions changed, often dramatically, during AI treatment. This high clonal instability, over 4 months of AI treatment, was likely due to a selective growth advantage for a subclone in the presence of oestrogen deprivation. While it is hard to disprove the null hypothesis, that is, we are simply observing spatial heterogeneity in a very complex tumour, cases like BRC41 displayed very high levels of temporal change with little difference between spatially

Table 2 | Thirty-eight additional cases sequenced with an 83-gene panel and a description of key clinical and biomarker parameters.

Case	Age	PT time point	Intrinsic subtype		Proportion cells Ki67 positive		Ki67 response	ER Allred	
			BL	PT	BL	PT		BL	SURG
586120	68	EOT	LumB	LumA	0.299	0.019	Sensitive	7	8
439295	58	Surgery	LumB	LumB	0.53	0.453	Resistant	7	6
228281	85	EOT	LumB	LumA	0.387	0.045	Sensitive	8	7
412952	81	Surgery	LumB	Normal	0.192	0.013	Sensitive	6	6
427207	78	Surgery	LumB	LumB	0.426	0.196	Resistant	7	6
687744	55	Surgery	LumB	LumB	0.074	0.021	Sensitive	5	4
251582	56	Surgery	LumA	NA	0.049	0.003	Sensitive	7	7
401301	63	Surgery	Her2	Her2	0.379	0.343	Resistant	4	0
949339	53	Surgery	LumA	LumA	0.003	0.001	Sensitive	5	NA
148037	62	Surgery	LumB	NA	0.385	0.336	Resistant	8	6
394713	64	EOT	LumB	LumA	0.489	NA	Resistant	7	NA
204983	62	EOT	LumB	LumA	0.217	NA	Resistant	8	NA
144029	74	Surgery	LumB	Her2	0.487	0.224	Resistant	6	2
396695	54	Surgery	LumA	NA	0.265	0.002	Sensitive	7	8
229684	58	Surgery	Basal	Basal	0.388	0.268	Resistant	3	0
808150	55	Surgery	LumB	Normal	0.154	0.077	Sensitive	8	7
755730	62	Surgery	LumB	LumA	0.177	0.009	Sensitive	7	4
895779	90	EOT	LumB	LumB	0.327	0.015	Sensitive	8	7
228281	66	Surgery	LumB	LumA	0.136	0.03	Sensitive	7	7
314722	73	Surgery	LumA	LumA	0.112	0.029	Sensitive	7	4
641677	62	Surgery	HER2	Her2	0.695	0.515	Resistant	6	3
520102	54	EOT	LumA	LumA	0.261	0.006	Sensitive	8	7
948809	58	Surgery	LumB	LumA	NA	0.043	Sensitive	6	7
982661	53	EOT	LumA	LumA	0.127	0.01	Sensitive	7	7
832844	59	EOT	LumB	LumA	0.28	0.21	Resistant	8	8
287368	66	EOT	Her2	Her2	0.9	0.238	Resistant	7	8
411144	76	EOT	LumA	LumB	0.091	0.162	Resistant	7	7
702554	55	EOT	LumB	LumB	0.6	0.8	Resistant	7	7
251239	73	EOT	LumB	LumB	0.3	0.063	Sensitive	7	7
971640	53	Surgery	LumB	Normal	0.4	0.003	Sensitive	7	8
963465	55	Surgery	LumB	NA	0.121	0.015	Sensitive	8	8
553787	63	EOT	LumB	NA	0.251	0.186	Resistant	8	8
451180	47	EOT	LumB	LumB	0.3	0.125	Resistant	8	8
306707	67	EOT	LumB	LumB	0.266	0.117	Resistant	7	7
147888	64	EOT	LumB	LumB	0.398	0.274	Resistant	8	7
768794	57	EOT	LumB	NA	0.192	0.17	Resistant	8	8
629051	65	EOT	LumA	LumA	0.086	0.01	Sensitive	8	8
625428	51	EOT	LumB	LumA	0.5	0.252	Resistant	8	8

NA, not available.

BL refers to baseline and PT the pathology specimen from either the surgical resection after 16 to 18 weeks of therapy or the time at which the patient was removed from the trial (EOT). All the cases in Table 1 were also assayed on this panel, with the exceptions of BRC11, BRC20 and BRC48.

separate cores taken concurrently. This evidence supports the argument for tumour evolution under selective pressure as the likely explanation. On the other hand, 63% of the multiple concurrent biopsies that we sequenced exhibited spatial heterogeneity. Thus, the shifts in clonal architecture that we observed are likely due to a combination of therapy-related subclonal selection and sampling of different subclonal populations within the tumour at different time points.

Few resistance mechanisms were revealed by this study, as only two *ESR1* mutations were treatment emergent at the 16 to 18 week time point and no *ESR1* translocations were detected by WGS or RNA seq¹⁷. This suggests that *ESR1* mutation-driven resistant subclones emerge over long periods of time, although the presence of several easily detectable *ESR1* mutations at ~100X coverage suggests that deeper sequencing might be important to detecting these mutations at an early-on treatment time point. The ALTERNATE neoadjuvant endocrine therapy trial is comparing an AI with fulvestrant, an ER-degrading agent (NCT01953588). The sample size for ALTERNATE (over 1,000 patients) and the longer duration of treatment before surgery

(24 weeks) will eventually allow hypotheses based on detecting low frequency *ESR1* mutant alleles in the post-treatment sample to be explored more thoroughly, and will determine whether the choice of endocrine agent influences the rate at which *ESR1* mutations evolve.

Interestingly, two tumours were diagnosed with activating *ERBB2* mutations²⁸, however, both were in AI-sensitive tumours, with very low on-treatment KI67 values. This suggests, at least anecdotally, that *ERBB2* activating mutations do not cause intrinsic endocrine therapy resistance, with high on-AI-treatment Ki67 values that were noted when studying HER2 amplified ER + tumours in the neoadjuvant endocrine setting²⁹. One other treatment emergent mutation in *ERBB2* was noted, S157F, but the functional significance of the mutation is uncertain. A final point about mutation-driven therapeutic hypotheses concerns the pre- and post-treatment *PIK3CA* data. It has been previously reported that there is no interaction between *PIK3CA* mutation status and response to neoadjuvant endocrine therapy^{20,30}. The lack of positive or negative selection for *PIK3CA* mutations observed in the present study is compatible with this conclusion. Of the three tumours with *PIK3CA* mutations detected at surgery,

but not at baseline, two were collision tumours, where the second tumour containing mutant *PIK3CA* was missed by the initial biopsies. Thus, spatial heterogeneity explains this pattern, and also is the likely cause of the apparent gain of a G118D mutation in one of the BRC15 post-treatment samples. This is supported by the lack of trend toward positive or negative selection in the 16 kinase domain mutant cases studied herein (Table 3).

In conclusion, caution needs to be exercised when interpreting clinical genomic results from a single core biopsy at a single time point. Higher depth of massively parallel sequencing, coupled with analysis tools to detect low-VAF variants, analysis of multiple tumour samples and tracking of genomic evolution in post-therapy samples all provide a more complete picture. These are feasible techniques, as we illustrate, and the data we report can be considered a proof of principle, supporting the idea that investment is needed to collect and study very large cohorts in such a manner. These studies will ultimately determine the clinical utility of genomic analysis in ER+ breast cancer that is more comprehensive than that afforded by analysis of a single pre-treatment sample.

Methods

Sample acquisition and clinical characterization. The samples were from two neoadjuvant endocrine therapy trials of postmenopausal women with clinical stage II to III ER-positive (Allred score 6–8) breast cancer (ACOSOG-Z1031, Alliance, NCT00265759 and NCT0084396) that have been previously described^{31,32}. All the samples were studied that had appropriate consents, at least 70% tumour content (by nuclei), and available DNA from both the baseline and surgical time points.

Genomic library preparation and sequencing. Library preparation was performed on DNA extracted from flash-frozen fresh tissue biopsies and matched peripheral blood, then sequenced. Both were done as described previously²⁰.

Copy number and structural variant detection. Copy number aberrations were detected using CopyCat v1.6.9 (<https://github.com/chrisamiller/copycat>) (Supplementary Software 2), with purity estimates derived from SNV allele fractions. (Table 1) Structural variants were detected as previously described^{20,33}. For measurement of concordance, SVs were considered to be the same event if the ends of each call were localized within 500 bp. Gene fusions were identified using INTEGRATE v0.1e, with default parameters³⁴.

SNV and indel detection. We detected SNVs using the union of three callers: (1) samtools version r963 [2] (params: -A -B) filtered by SNP-filter version v1 and intersected with Somatic Sniper version 1.0.2 [3] (params: -F vcf -q 1 -Q 15) filtered by false-positive version v1 (params: --bam-readcount-version 0.4 --bam-readcount-min-base-quality 15) then somatic-score-mapping-quality version v1 (params: --min-mapping-quality 40 --min-somatic-score 40); (2) VarScan 2.2.6 [4] filtered by varscan-high-confidence version v1 then false-positive version v1 (params: --bam-readcount-version 0.4 --bam-readcount-min-base-quality 15); (3) Strelka version 0.4.6.2 [5] (params: isSkipDepthFilters = 0).

Short insertions and deletions were detected using the union of four callers: (1) gatk-somatic-indel version 5336 [6] filtered by false-indel version v1 (params: --bam-readcount-version 0.4 --bam-readcount-min-base-quality 15); (2) pindel version 0.5 [7] filtered by pindel-somatic-calls version v1 then pindel-vaf-filter version v1 (params: --variant-freq-cutoff = 0.08) then pindel-read-support version v1; (3) VarScan 2.2.6 [6] filtered by varscan-high-confidence-indel version v1 then false-indel version v1 (params: --bam-readcount-version 0.4 --bam-readcount-min-base-quality 15); (4) Strelka version 0.4.6.2 [5] (params: isSkipDepthFilters = 0).

For SNVs and Indels in tier 2 and 3, we retained all variant calls that were also called in the deep validation data. Additional steps were taken to enhance the number of coding variants recovered, including pooling of discovery (WGS) and validation (capture) data to provide enhanced coverage. A binomial log-likelihood

Table 3 | Druggable mutations observed in samples assayed with targeted sequencing.

Sample	WGS	Gene	Amino acid change	Baseline VAF	Surgical VAF	Ki67 BL	Ki67 PT	Ki67 response
451180	—	<i>ERBB2</i>	p.R599C	4.59	0	0.3	0.125	Resistant
917386	BRC14	<i>ERBB2</i>	p.V777L	26.67	31.55	0.442	0.012	Sensitive
148037	—	<i>ERBB2</i>	p.780in_frame_insGSP	2.67	12.35	0.003	0.001	Sensitive
963465	—	<i>ERBB2</i>	p.S157F	0	7.21	0.121	0.015	Sensitive
451180	—	<i>ESR1</i>	p.E380Q	1.19	3.9	0.3	0.125	Resistant
306707	—	<i>ESR1</i>	p.K481N	14.17	39.71	0.266	0.117	Resistant
375938	BRC22	<i>ESR1</i>	p.D538G	0	11.93	0.008	0	Sensitive
255394	BRC39	<i>PIK3CA</i>	p.P104R	52.73	23.81	0.356	0.124	Resistant
702554	—	<i>PIK3CA</i>	p.N345K	29.41	34.09	0.6	0.8	Resistant
229684	—	<i>PIK3CA</i>	p.G364R	34.33	29.49	0.265	0.002	Sensitive
629051	—	<i>PIK3CA</i>	p.E418K	35.06	41.54	0.086	0.01	Sensitive
228281	—	<i>PIK3CA</i>	p.C420R	22.58	29.71	0.327	0.015	Sensitive
169316	BRC38	<i>PIK3CA</i>	p.E542K	0	28.95	0.162	0.471	Resistant
434673	BRC42	<i>PIK3CA</i>	p.E542K	10.17	4.55	0.081	0.022	Sensitive
144029	—	<i>PIK3CA</i>	p.E545K	16.67	28.57	0.217	NA	Resistant
306707	—	<i>PIK3CA</i>	p.E545K	10.68	38.05	0.266	0.117	Resistant
629051	—	<i>PIK3CA</i>	p.E545Q	39.58	29.89	0.086	0.01	Sensitive
228281	—	<i>PIK3CA</i>	p.E545K	84.13	26.28	0.387	0.045	Sensitive
412952	BRC39	<i>PIK3CA</i>	p.N1044K	41.11	19.75	0.356	0.124	Resistant
255394	BRC21	<i>PIK3CA</i>	p.H1047R	0	19.28	0.058	0.019	Sensitive
441655	BRC40	<i>PIK3CA</i>	p.H1047R	27.18	27.14	0.076	0.008	Sensitive
956936	BRC37	<i>PIK3CA</i>	p.H1047R	55.52	66.25	0.76	0.308	Resistant
303279	BRC10	<i>PIK3CA</i>	p.H1047R	50	36.27	0.492	0.035	Sensitive
632762	—	<i>PIK3CA</i>	p.H1047R	48.84	19.21	0.388	0.268	Resistant
808150	BRC50	<i>PIK3CA</i>	p.H1047L	48.26	45.18	0.195	0.104	Resistant
629834	—	<i>PIK3CA</i>	p.H1047R	60	33.73	0.177	0.009	Sensitive
895779	—	<i>PIK3CA</i>	p.H1047R	12.04	21.77	0.112	0.029	Sensitive
641677	BRC15	<i>PIK3CA</i>	p.H1047R	37.78	27.17	0.238	0.01	Sensitive
384803	BRC24	<i>PIK3CA</i>	p.H1047R	35.63	24.21	0.152	0.155	Resistant
526430	BRC18	<i>PIK3CA</i>	p.H1047R	23.64	23.58	0.125	0	Sensitive
767881	—	<i>PIK3CA</i>	p.H1047R	54.29	32.07	0.091	0.162	Resistant
411144	—	<i>PIK3CA</i>	p.H1047R	22.35	2.99	0.3	0.063	Sensitive
251239	—	<i>PIK3CA</i>	p.H1047R	45.65	45.45	0.53	0.453	Resistant
439295	—	<i>PIK3CA</i>	p.G1049R	23.53	22.16	0.154	0.077	Sensitive

filter (<https://github.com/genome/genome/blob/master/lib/perl/Genome/Model/Tools/Validation/IdentifyOutliers.pm>) was applied to variant calls with at least $10 \times$ sequence coverage in both tumour and normal samples, and those identified as somatic with $LLR > 3$ were retained. Review of mutational hotspots was used to recover additional variants in breast cancer-related genes.

Variant validation. Mutations in the 22 WGS samples from the original paper were validated using custom capture arrays targeted to the mutations in each tumour, as previously described²⁰. After sequencing the post-AI samples, a second round of custom capture validation was performed on all 77 samples from these 22 patients, by combining the somatic mutation sites predicted in both the baseline and surgical samples. All coding SNVs, indels and SVs were targeted for validation, along with a random subset of non-coding variants, providing additional sequence coverage for validation and clonality analysis. No Sanger sequencing validation was performed. Controlled tests of our somatic mutation calling pipeline (with similar configuration to that used here) have established a positive predictive value of over 90% for mutations down to VAFs of $\sim 5\%$, so we expect the baseline false-positive rate to be low in these data. Results from the validation sequencing pipeline were then subjected to extensive manual review to validate the presence of variants and remove additional false-positive somatic calls. This involved manually inspecting sequencing reads using the Integrated Genomic Viewer (IGV), and flagging a number of different types of sequencing artifacts, including: insertions and deletions at the ends of homopolymer runs, calls that were present in the matched normal sample (or other normal samples), and regions with substantial numbers of low-or-zero quality mapping scores, indicating potential reference build problems or mapping artifacts. A similar process was used to inspect copy number calls, removing those resulting from alignment errors in highly repetitive regions of the genome or that span assembly gaps or centromeres.

Baseline and surgical-specific variants. Variant allele fractions of all tier 1 variants were corrected for purity by reducing the number of reference-supporting reads in proportion to the purity of the sample. This effectively scales up the VAFs in such a way that founding clone variants are near 50% VAF. At each variant position, Fisher's exact test was used to identify significant VAF changes, by comparing each baseline sample with each surgical sample. Those with $P < 0.05$ were retained. Baseline-specific variants were required to be below 10% VAF in the surgical sample and have at least one variant-supporting read in the baseline RNA sample. Surgical-specific variants were required to be below 10% VAF in the baseline sample and have at least one variant-supporting read in the surgical RNA sample.

Targeted sequencing of extension cohort. A panel of 83 breast cancer-related genes was derived from meta-analysis and literature review (Supplementary Data 11). These genes were targeted comprehensively with 3,029 complementary probes for hybridization-based enrichment (IDT Technologies), then sequenced on the Illumina HiSeq platform. These captured data were produced for baseline and surgical samples from 19 of the 22 WGS cases, and for an additional 38 cases. SNVs and Indels were called as described in the Supplementary Methods.

RNA library preparation and sequencing. RNA preparation was performed according to the Illumina TruSeq mRNA protocol with Poly-A selection. Unstranded paired-end sequencing was performed on the Illumina HiSeq 2000 platform, producing $48 \times 7 \times 48$ paired-end reads.

Expression profiling. RNA-seq data were aligned with Tophat v2.0.8 (*de novo* mode, reference only, reference guided) and expression levels calculated with Cufflinks v2.1.1 (params: --max-bundle-length = 10,000,000). RNAseq read-counts for all coding mutations were calculated using bam-readcount 0.7 (<https://github.com/genome/bam-readcount>). The samples were clustered by applying unsupervised hierarchical clustering on a matrix of sample-by-sample correlations derived from gene expression (FPKM) values (Supplementary Data 7 and 8).

Clonality and clonal instability. The clonal architecture of each tumour was inferred with sciClone (version 1.0.7; ref. 22), using default parameters except for copyNumberMargins set to 0.25. The median VAF of each subclone was used as input for clonevol (<https://github.com/hdng/clonevol>), which constructed evolutionary trees and estimated the absolute percentage of each clone in each sample. The clonal instability index was calculated as the mean of absolute differences between pre and post clonevol-inferred clonal percentages. A value of 0 represents no change, and 1 represents completely distinct tumours. In this study, 0.1 was used as an arbitrary cutoff between 'stable' and 'dynamic' tumours. BRC17 and BRC48 had complex patterns of copy number and ploidy changes preventing automated clonal inference, but clearly fall into this classification, with mutations specific to both baseline and surgical tumours. BRC18 did not have clear separation between subclonal populations, but contained a large number of mutations that were present in roughly half of the baseline sample tumour cells and were significantly enriched (and mostly expressed) in the surgical sample tumour cells.

Links to all the data and scripts used for clonal inference are found in Supplementary Software 1.

Code availability. Code used for analyses is all open source and detailed versions and parameters are provided above.

Data availability. The baseline whole-genome sequences have already been reported²⁰ and deposited in dbGaP with accession ID phs000472. Both the RNA sequencing data and the genomic sequencing data from the post-treatment samples and extension cohort have been added to the same study. All other data are contained within the Article or Supplementary Information files, or available from the authors upon request.

References

- Ma, C. X., Reinert, T., Chmielewska, I. & Ellis, M. J. Mechanisms of aromatase inhibitor resistance. *Nat. Rev. Cancer* **15**, 261–275 (2015).
- Miller, W. R. *et al.* Predicting response and resistance to endocrine therapy: profiling patients on aromatase inhibitors. *Cancer* **112**, 689–694 (2008).
- Ma, C. X., Sanchez, C. G. & Ellis, M. J. Predicting endocrine therapy responsiveness in breast cancer. *Oncology (Williston Park)* **23**, 133–142 (2009).
- Nowell, P. C. The clonal evolution of tumor cell populations. *Science* **194**, 23–28 (1976).
- Welch, J. S. *et al.* The origin and evolution of mutations in acute myeloid leukemia. *Cell* **150**, 264–278 (2012).
- Nik-Zainal, S. *et al.* The life history of 21 breast cancers. *Cell* **149**, 994–1007 (2012).
- Zhang, J. *et al.* Intratumor heterogeneity in localized lung adenocarcinomas delineated by multiregion sequencing. *Science* **346**, 256–259 (2014).
- de Bruin, E. C. *et al.* Spatial and temporal diversity in genomic instability processes defines lung cancer evolution. *Science* **346**, 251–256 (2014).
- Gerlinger, M. & Swanton, C. How Darwinian models inform therapeutic failure initiated by clonal heterogeneity in cancer medicine. *Br. J. Cancer* **103**, 1139–1143 (2010).
- Yap, T. A., Gerlinger, M., Futreal, P. A., Pusztai, L. & Swanton, C. Intratumor heterogeneity: seeing the wood for the trees. *Sci. Transl. Med.* **4**, 127ps10 (2012).
- Turke, A. B. *et al.* Preexistence and clonal selection of MET amplification in EGFR mutant NSCLC. *Cancer Cell* **17**, 77–88 (2010).
- Su, K.-Y. *et al.* Pretreatment epidermal growth factor receptor (EGFR) T790M mutation predicts shorter EGFR tyrosine kinase inhibitor response duration in patients with non-small-cell lung cancer. *J. Clin. Oncol.* **30**, 433–440 (2012).
- Juric, D. *et al.* Convergent loss of PTEN leads to clinical resistance to a PI(3)K α inhibitor. *Nature* **518**, 240–244 (2015).
- Hartman, M. *et al.* Incidence and prognosis of synchronous and metachronous bilateral breast cancer. *J. Clin. Oncol.* **25**, 4210–4216 (2007).
- Wahner-Roedler, D. L., Reynolds, C. A. & Boughey, J. C. Collision tumors with synchronous presentation of breast carcinoma and lymphoproliferative disorders in the axillary nodes of patients with newly diagnosed breast cancer: a case series. *Clin. Breast Cancer* **11**, 61–66 (2011).
- Shah, S. P. *et al.* The clonal and mutational evolution spectrum of primary triple-negative breast cancers. *Nature* **486**, 395–399 (2012).
- Li, S. *et al.* Endocrine-therapy-resistant ESR1 variants revealed by genomic characterization of breast-cancer-derived xenografts. *Cell Rep.* **4**, 1116–1130 (2013).
- Miller, W. R. *et al.* Changes in breast cancer transcriptional profiles after treatment with the aromatase inhibitor, letrozole. *Pharmacogenet. Genomics* **17**, 813–826 (2007).
- Mackay, A. *et al.* Molecular response to aromatase inhibitor treatment in primary breast cancer. *Breast Cancer Res.* **9**, R37 (2007).
- Ellis, M. J. *et al.* Whole-genome analysis informs breast cancer response to aromatase inhibition. *Nature* **486**, 353–360 (2012).
- Mardis, E. R. *et al.* Recurring mutations found by sequencing an acute myeloid leukemia genome. *N. Engl. J. Med.* **361**, 1058–1066 (2009).
- Miller, C. A. *et al.* SciClone: inferring clonal architecture and tracking the spatial and temporal patterns of tumor evolution. *PLoS Comput. Biol.* **10**, e1003665 (2014).
- Gururaj, A. E., Holm, C., Landberg, G. & Kumar, R. Breast cancer-amplified sequence 3, a target of metastasis-associated protein 1, contributes to tamoxifen resistance in premenopausal patients with breast cancer. *Cell Cycle* **5**, 1407–1410 (2006).
- Toy, W. *et al.* ESR1 ligand-binding domain mutations in hormone-resistant breast cancer. *Nat. Genet.* **45**, 1439–1445 (2013).
- Robinson, D. R. *et al.* Activating ESR1 mutations in hormone-resistant metastatic breast cancer. *Nat. Genet.* **45**, 1446–1451 (2013).
- Ellis, M. J. *et al.* Outcome prediction for estrogen receptor-positive breast cancer based on postneoadjuvant endocrine therapy tumor characteristics. *J. Natl Cancer Inst.* **100**, 1380–1388 (2008).

27. Foukakis, T., Åström, G., Lindström, L., Hatschek, T. & Bergh, J. When to order a biopsy to characterise a metastatic relapse in breast cancer. *Ann. Oncol.* **23** (Suppl 10): x349–x353 (2012).
28. Bose, R. *et al.* Activating HER2 mutations in HER2 gene amplification negative breast cancer. *Cancer Discov.* **3**, 224–237 (2013).
29. Ellis, M. J. Functional analysis of the breast cancer genome. *J. Clin. Oncol.* **24**, 1649–1650 (2006).
30. Ellis, M. J. *et al.* Phosphatidylinositol-3-kinase alpha catalytic subunit mutation and response to neoadjuvant endocrine therapy for estrogen receptor positive breast cancer. *Breast Cancer Res. Treat.* **119**, 379–390 (2010).
31. Ellis, M. J. *et al.* Randomized phase II neoadjuvant comparison between letrozole, anastrozole, and exemestane for postmenopausal women with estrogen receptor–rich stage 2 to 3 breast cancer: clinical and biomarker outcomes and predictive value of the baseline PAM50-based intrinsic subtype—ACOSOG Z1031. *J. Clin. Oncol.* **29**, 2342–2349 (2011).
32. Olson, J. A. *et al.* Improved surgical outcomes for breast cancer patients receiving neoadjuvant aromatase inhibitor therapy: results from a multicenter phase II trial. *J. Am. Coll. Surg.* **208**, 906–914 (2009), discussion 915–916.
33. Griffith, M. *et al.* Genome modeling system: a knowledge management platform for genomics. *PLoS Comput. Biol.* **11**, e1004274 (2015).
34. Zhang, J. *et al.* INTEGRATE: gene fusion discovery using whole genome and transcriptome data. *Genome Res.* **26**, 108–118 (2016).

Acknowledgements

Research reported in this publication was supported by the National Cancer Institute of the National Institutes of Health under Award Numbers U10CA180821 and U10CA180882 (to the Alliance for Clinical Trials in Oncology), and the following grants: 5U10CA180833 and 5U10CA180858. The content is solely the responsibility of the authors and does not necessarily represent the official views of the National Institutes of Health. Also supported in part by funding provided by grants U54HG003079 from the National Human Genome Research Institute to R.K.W., R01-CA095614 to M.J.E., U24-CA114736, U10-CA076001, and U01-CA114722 from the National Cancer Institute; by the Breast Cancer Research Foundation; Komen Promise Grant PG12220321 to M.J.E., a Komen St Louis Affiliate Clinical Trials Grant; and support for Z1031 from Pfizer and Novartis. M.J.E. is a McNair Medical Foundation Scholar and the recipient of

a Cancer Prevention Research Institute of Texas established investigator award RR140033. We thank the participants of the clinical trials for their critically important samples provided for the study.

Author contributions

C.A.M., R.K.W., M.J.E. and E.R.M. designed the experiments and data analysis. C.A.M., Y.G., C.L., O.L.G., M.G., D.S., T.L. and D.E.L. performed the data analysis. M.J.E. led the clinical investigations and biomarker analysis. C.A.M., Y.G. and C.L. prepared the figures and tables. V.J.S. provided statistical support. M.W. and K.D. provided pathology analysis. K.H., J.S., T.W., G.A.C. and S.R.D. provided study materials, patients or clinical support. C.A.M., E.R.M. and M.J.E. wrote the manuscript. Y.G., S.R.D., R.K.W. and D.E.L. critically read and commented on the manuscript.

Additional information

Supplementary Information accompanies this paper at <http://www.nature.com/naturecommunications>

Competing financial interests: The authors declare no competing financial interests.

Reprints and permission information is available online at <http://npg.nature.com/reprintsandpermissions/>

How to cite this article: Miller, C. A. *et al.* Aromatase inhibition remodels the clonal architecture of estrogen-receptor-positive breast cancers. *Nat. Commun.* **7**:12498 doi: 10.1038/ncomms12498 (2016).



This work is licensed under a Creative Commons Attribution 4.0 International License. The images or other third party material in this article are included in the article's Creative Commons license, unless indicated otherwise in the credit line; if the material is not included under the Creative Commons license, users will need to obtain permission from the license holder to reproduce the material. To view a copy of this license, visit <http://creativecommons.org/licenses/by/4.0/>

© The Author(s) 2016