

Washington University School of Medicine Digital Commons@Becker

Open Access Publications

2015

Surgical anatomy of the unciniate process and transverse foramen determined by computer tomography

Moon S. Park
Hallym University

Seong-Hwan Moon
Yonsei University

Tae-Hwan Kim
Hallym University

Jae K. Oh
Hallym University

Jae K. Jung
Hallym University

See next page for additional authors

Follow this and additional works at: http://digitalcommons.wustl.edu/open_access_pubs

Recommended Citation

Park, Moon S.; Moon, Seong-Hwan; Kim, Tae-Hwan; Oh, Jae K.; Jung, Jae K.; Kim, Hyung J.; and Riew, K. Daniel, "Surgical anatomy of the unciniate process and transverse foramen determined by computer tomography." *Global Spine Journal*.5,5. 383-390. (2015). http://digitalcommons.wustl.edu/open_access_pubs/4528

This Open Access Publication is brought to you for free and open access by Digital Commons@Becker. It has been accepted for inclusion in Open Access Publications by an authorized administrator of Digital Commons@Becker. For more information, please contact engeszer@wustl.edu.

Authors

Moon S. Park, Seong-Hwan Moon, Tae-Hwan Kim, Jae K. Oh, Jae K. Jung, Hyung J. Kim, and K. Daniel Riew

Surgical Anatomy of the Uncinate Process and Transverse Foramen Determined by Computed Tomography

Moon Soo Park¹ Seong-Hwan Moon² Tae-Hwan Kim¹ Jae Keun Oh³ Jae Kyun Jung¹
Hyung Joon Kim¹ K. Daniel Riew⁴

¹Department of Orthopaedic Surgery, Hallym University Sacred Heart Hospital, Medical College of Hallym University, Gyeonggi-do, Republic of Korea

²Department of Orthopaedic Surgery, Yonsei University College of Medicine, Seoul, Republic of Korea

³Department of Neurosurgery, Hallym University Sacred Heart Hospital, Medical College of Hallym University, Gyeonggi-do, Republic of Korea

⁴Washington University Orthopedics, BJC Institute of Health at Washington University School of Medicine, St. Louis, Missouri, United States

Address for correspondence Moon Soo Park, MD, PhD, 896, Pyeongchon-dong, Dongan-gu, Anyang-si, Gyeonggi-do, 431-070, Republic of Korea (e-mail: amhangpark@gmail.com).

Global Spine J 2015;5:383–390.

Abstract

Study Design Computed tomography–based cohort study.

Objective Although there are publications concerning the relationship between the vertebral artery and uncinat process, there is no practical guide detailing the dimensions of this region to use during decompression of the intervertebral foramen. The purpose of this study is to determine the anatomic parameters that can be used as a guide for thorough decompression of the intervertebral foramen.

Methods Fifty-one patients with three-dimensional computed tomography scans of the cervical spine from 2003 to 2012 were included. On axial views, we measured the distance from the midline to the medial and lateral cortices of the pedicle bilaterally from C3 to C7. On coronal reconstructed views, we measured the minimum height of the uncinat process from the cranial cortex of the pedicle adjacent to the posterior cortex of vertebral body and the maximal height of the uncinat process from the cranial cortex of the pedicle at the midportion of the vertebral body bilaterally from C3 to C7.

Results The mean distances from midline to the medial and lateral cortices of the pedicle were 10.1 ± 1.3 mm and 13.9 ± 1.5 mm, respectively. The mean minimum height of the uncinat process from the cranial cortex of the pedicle was 4.6 ± 1.6 mm and the mean maximal height was 6.1 ± 1.7 mm.

Conclusions Our results suggest that in most cases, one can thoroughly decompress the intervertebral foramen by removing the uncinat out to 13 mm laterally from the midline and 4 mm above the pedicle without violating the transverse foramen.

Keywords

- ▶ cervical spine
- ▶ uncinat process
- ▶ transverse foramen
- ▶ intervertebral foramen
- ▶ decompression

received
December 4, 2014
accepted after revision
February 11, 2015
published online
April 29, 2015

DOI <http://dx.doi.org/10.1055/s-0035-1550091>.
ISSN 2192-5682.

© 2015 Georg Thieme Verlag KG
Stuttgart · New York

License terms



Introduction

Vertebral artery injury is a catastrophic complication that can occur during anterior decompression of the cervical foramen. The distance between the uncinat tip and the vertebral artery was found to be as short as 1 mm on cadaveric specimens.^{1,2} There are controversies regarding the width of the uncinat process that needs to be resected for adequate decompression of the intervertebral foramen; the recommended widths based upon cadaveric studies has been variously reported as 3.5 to 4.5 mm,² 4 mm,³ 5 mm,^{4,5} or 6 mm.⁶ None of these studies, however, provide the most important information about the location of the vertebral artery and the height of the uncinat process that needs to be resected to achieve adequate decompression of the intervertebral foramen.

The aim of the present study is to determine the anatomic parameters between the various structures near the intervertebral foramen and the transverse foramen where the vertebral artery lies.

Materials and Methods

This study was approved by the institutional review board (number: 2013-I141) at the institution of the corresponding author. It was a retrospective radiologic study of 51 patients who were randomly selected from a larger group of 1,939 patients. They had undergone three-dimensional (3D) computed tomography (CTs) of the cervical spine as part of their workup for neck pain, radiating arm pain, or difficulty with ambulation, from January 2003 to January 2012 at the first author's academic institution. Scanning parameters of the cervical spine 3D CT consisted of 2-mm thickness and 2-mm interval slices. We excluded patients with a previous history of spinal trauma or any operations for trauma, infection, or tumor. The mean age was 66.6 years. There were 30 men and 21 women.

We measured the distance between the midline and the uncinat process, as well as the transverse foramen, which we used as the location of the vertebral artery. On the axial view, we drew a line bisecting the vertebral body to identify the midpoints of the anterior and posterior cortices (►Fig. 1). From the midpoint of the anterior cortex of the vertebra, we drew lines to the medial and lateral cortices of the pedicle bilaterally from C3 to C7. We measured the distance along the posterior cortex of the vertebral body to the structures involved in the foraminal decompression (►Fig. 1). The distance from the midline to the medial pedicle cortex (red line) represents the central canal (►Fig. 1). The distance from the midline to the lateral cortex of the pedicle (yellow line) represents the central canal plus the intervertebral foramen to the lateral border of the uncinat process (►Fig. 1).

We measured the height of the uncinat process bilaterally from C3 to C7 on two coronal 3D CT views of the cervical spine: at the level of the posterior cortex of the vertebral body (►Fig. 2) and at the midportion of the vertebral body (►Fig. 3). These two views represent, respectively, the minimal and maximal heights of the uncinat process from the cranial cortex of the pedicles.

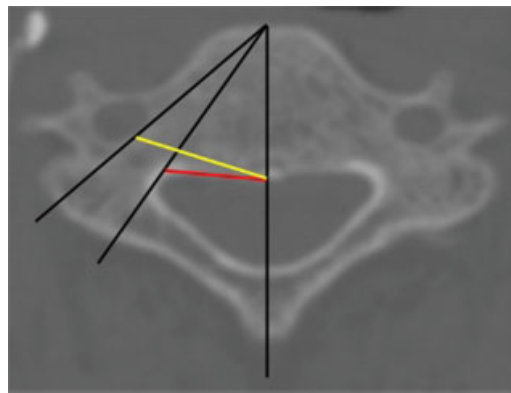


Fig. 1 The axial view of a cervical vertebra demonstrating all the measured parameters, the distance from the midline to the medial pedicle cortex (red line), and the distance from the midline to the lateral pedicle cortex (yellow line).

Results

The mean distances from the midline to the medial and lateral cortices of the pedicle were 10.1 ± 1.3 mm and 13.9 ± 1.5 mm, respectively (►Table 1). The mean distance from the midline to the medial cortex of the pedicle increased from C3 to C5 or C6 with a minimum of 9.2 ± 1.1 mm on the right and a minimum of 9.3 ± 1.1 mm on the left at C3 (►Table 1). Therefore, a complete decompression of the spinal canal would have to extend at least 20 mm from side to side (►Figs. 4, 5, 6). The mean distance from midline to the lateral cortex of the pedicle gradually increased from C3 to C6 with a minimum 13.1 ± 1.4 mm on the right and minimum 13.2 ± 1.7 mm on the left at C3 (►Table 1). This data suggests that to thoroughly decompress the foramina bilaterally, one has to extend a minimum of 26 mm from side to side. Further lateral would place the vertebral artery at risk.

To determine the width of the pedicles, we took the difference between the distances to the medial and lateral cortices of the pedicle. The average was 3.8 ± 1.1 mm. The size decreased from C3 to C5, increased from C5 to C7, and was smallest at C5 (►Table 1).

The mean minimal height of the uncinat process from the cranial cortex of the pedicle was 4.6 ± 1.6 mm and the mean maximal height was 6.1 ± 1.7 mm (►Table 2). The mean minimal height of the uncinat process was highest at C3 and lowest at C6 (►Table 2). The mean maximal height of the uncinat process decreased from C3 to C7 (►Table 2). Because these are the normal values, in uncinat hypertrophy that causes root compression, the decompression of the uncinat process would need to extend more than 4 mm and less than 6 mm above the level of the pedicle to thoroughly decompress the foramen.

Discussion

Injury to the vertebral artery, which is at risk during anterior foraminal decompression, can result in catastrophic consequences such as massive bleeding, cerebellar or brainstem infarction, and death.^{1,2,7} Previous studies have determined that the uncinat process has a width from 3.5 to 6 mm.²⁻⁶

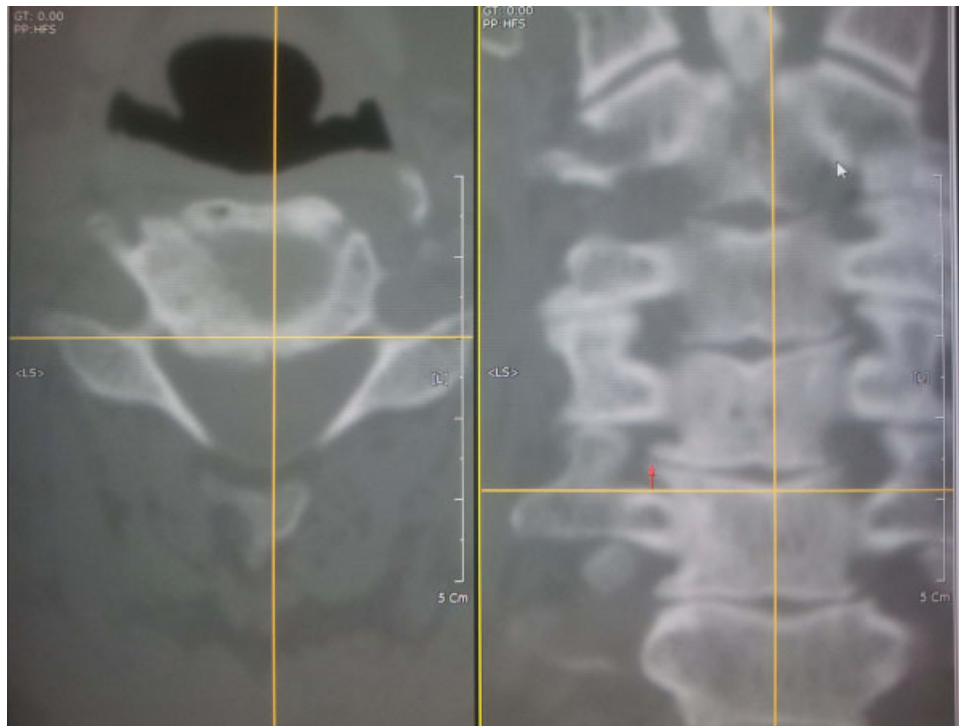


Fig. 2 The horizontal line on the axial image on the left depicts the location of the coronal cut on the right. The coronal view is adjacent to the posterior cortex of the vertebral body. The minimum height of the uncinate process (red arrow) is measured from a horizontal line connecting the cranial cortex of the pedicles.

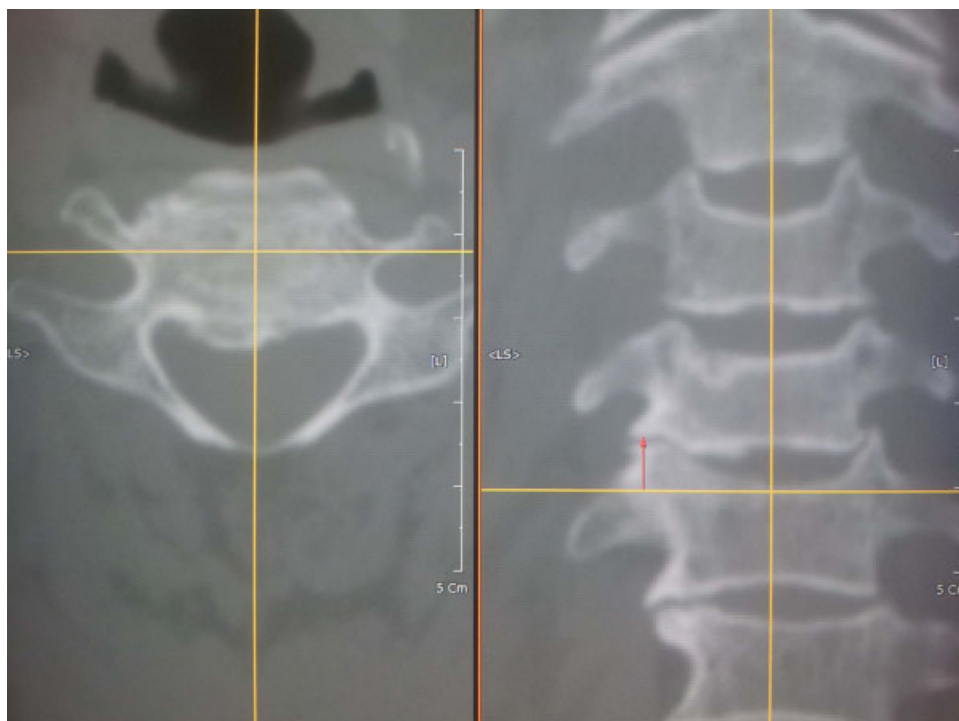


Fig. 3 The horizontal line on the axial image on the left depicts the location of the coronal cut on the right. On the right side is the coronal view at the midportion of the vertebral body. The maximal height of the uncinate process (red arrow) is measured from a horizontal line connecting the cranial cortex of the pedicles.

However, the studies did not provide information regarding the location of the vertebral artery and the height of the uncinate process. The purpose of the present study is to

determine the anatomic parameters of the uncinate process and vertebral artery, which can be used as a guide for thorough decompression of the foramen.

Table 1 Distance from midline to the medial and lateral cortices of the pedicle

Distance	Medial cortex (mm)	Lateral cortex (mm)	Pedicle width (mm)
C3			
Right	9.2 ± 1.1	13.1 ± 1.4	3.9 ± 0.9
Left	9.3 ± 1.1	13.2 ± 1.7	3.8 ± 1.0
C4			
Right	10.1 ± 1.1	13.7 ± 0.3	3.6 ± 0.9
Left	10.1 ± 1.2	13.4 ± 1.4	3.3 ± 0.9
C5			
Right	10.6 ± 1.1	14.0 ± 1.2	3.4 ± 1.0
Left	10.8 ± 1.1	14.0 ± 1.2	3.3 ± 1.2
C6			
Right	10.6 ± 1.2	14.6 ± 1.5	4.0 ± 1.3
Left	10.7 ± 1.3	14.5 ± 1.4	3.7 ± 1.1
C7			
Right	9.9 ± 1.1	14.4 ± 1.5	4.4 ± 1.1
Left	9.9 ± 1.5	14.1 ± 1.5	4.2 ± 1.4
Total			
Right	10.1 ± 1.2	13.9 ± 1.5	3.9 ± 1.1
Left	10.2 ± 1.4	13.8 ± 1.5	3.7 ± 1.2
Average	10.1 ± 1.3	13.9 ± 1.5	3.8 ± 1.1

Note: Results are mean ± standard deviation.

We found that the mean distances from the midline to the medial and lateral cortices of the pedicle were 10.1 ± 1.3 mm and 13.9 ± 1.5 mm, respectively. The pedicle width was an average of 3.8 ± 1.1 mm. The mean height of the uncinat process above the cranial border of the pedicle (measured from coronally reconstructed CTs) was 4.6 ± 1.6 mm at the level of the posterior cortex and 6.1 ± 1.7 mm at the mid-vertebral body level.

The mean distances from the midline to the medial cortex of the pedicle were longer at C5 and C6 and shorter at C3. The distance was greater at C6 than C7 in the current study. These

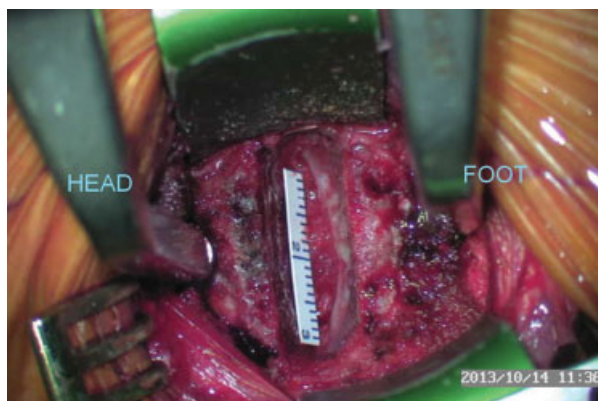


Fig. 4 Paper ruler of 20 mm necessary for thorough decompression of the spinal canal.

results were not consistent with the previous studies,^{8,9} which found that the interpedicular distance was smallest at C3 and greatest at C7 (**Table 3**).^{8,9} The difference might be explained by the fact that the interpedicular distance was measured by the maximal distance between the medial aspects of the pedicles in previous studies,^{8,9} and we measured the distances from the midline to the medial cortex of the pedicle where the pedicle meets the vertebral body (**Fig. 7**).

The mean distance from the midline to the lateral cortex of the pedicle was longer at C6 and shorter at C3. These results showing increasing distance from C3 to C6 are similar to four of the previous studies (**Table 3**).¹⁰⁻¹³ Two of these were cadaveric,^{10,11} and two were CT studies (**Table 3**).^{12,13} However, two other cadaveric studies found no obvious pattern of increasing or decreasing distances as one went from C3 to C7 (**Table 3**).^{7,14} It might be explained by the fact that Russo et al had measured the distance from the midline to the medial border of the vertebral artery infused with colored silicone, not the distance between the lateral cortices of cervical pedicles.⁷ Curylo et al had measured the distance between the right and left transverse foramina.¹⁴

In the current study, the pedicle width was 3.8 ± 1.1 mm. The pedicle width was smallest at C5, decreasing from C3 to C5 and increasing from C5 to C7. In contrast to previous studies, we did not measure the width of the uncinate. The purpose of the previous studies was to elucidate the anatomic features of the uncinat process including the uncinat

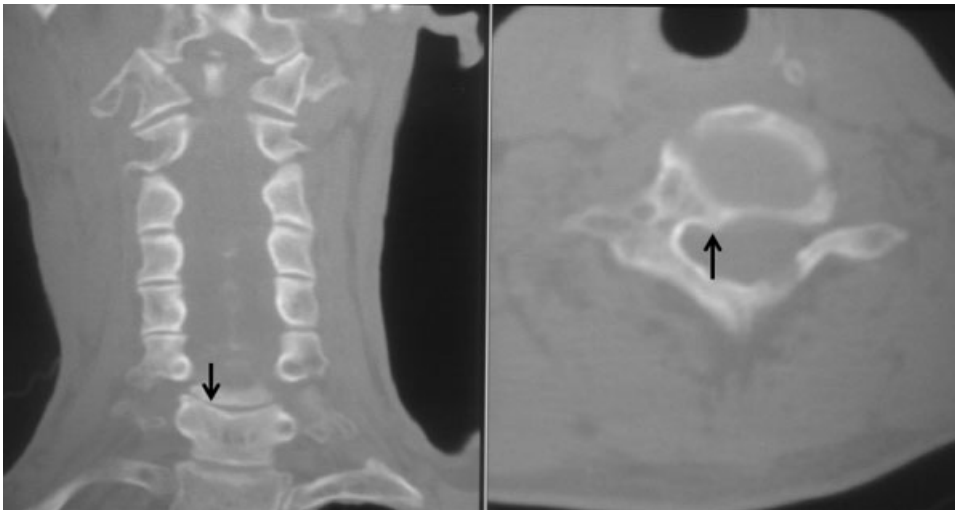


Fig. 5 The computed tomographic views showing the osteophyte (black arrows) medial to the right pedicle compressing spinal cord at C6–C7 disk level before the decompressive surgery under the authors' practical guide.

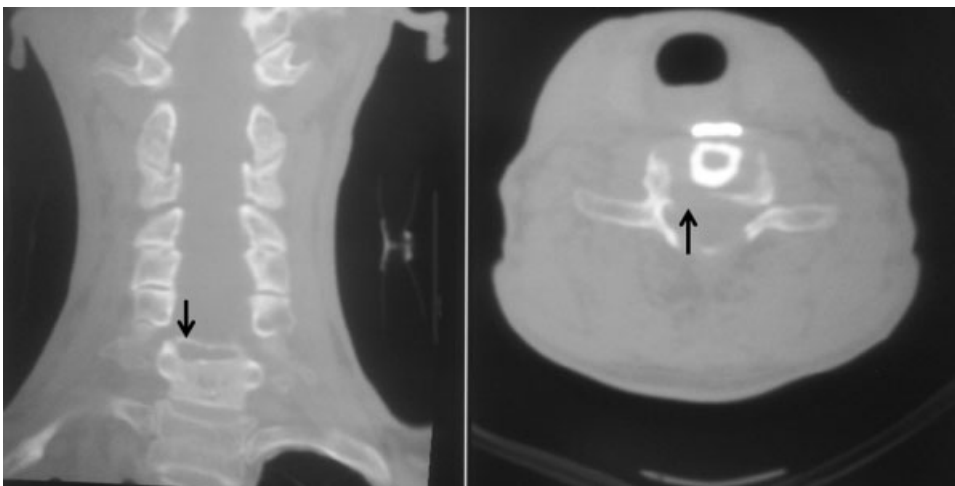


Fig. 6 The computed tomographic views showing the complete removal of the osteophyte (black arrows) medial to the right pedicle compressing spinal cord at C6–C7 disk level after the decompressive surgery under the authors' practical guide of up to 10 mm laterally from the midline to medial cortex of the pedicle.

width.^{1,2,6} In contrast, our purpose is to show the safe margin for avoiding vertebral artery injury. For this purpose, the most important landmark is the lateral margin of the pedicle, which is also the medial wall of the foramen transversarium, where the artery lies.

The height of the uncinata process was reported as 4.8 mm in a study with 40 cadaveric specimens and 6 mm in a study with 30 cadaveric specimens.^{15,16} The maximum height of the uncinata process gradually decreased from C3 to C7 in the current study. However, some previous studies showed results contrary to our results (►Table 4).^{2,7} The other previous studies did not show any tendency of the uncinata process height to decrease from C3 to C7 (►Table 4).^{1,6,17} This discrepancy might be explained by the fact that they had a different definition of *uncinata process height*.^{1,2,6,7,17} The height of the uncinata process was measured as the distance from the tip of the process to the superior surface of the

vertebral body,^{2,6,17} or to the rostral edge of the superior surface of the vertebral body.¹ The advantage to our measuring method is that if a spine surgeon wants to thoroughly decompress the foramen, they must remove any spurs that lie cranial to the pedicle and not just those above the edge of the vertebral body, because spurs often extend caudally down to the cranial border of the pedicle.

As with any study, the present investigation has several limitations. First, some of the measurements were made on normal uncinate. In such cases, the surgeon does not need to decompress the foramen. The numbers are likely to differ in cases where there is severe uncinata hypertrophy, which is the kind of situation where one has to do an uncinata resection. Therefore, the lateral aspect of the uncinata would likely be different. However, the dimensions of the pedicle would not be affected by uncinata hypertrophy and should be valid. Second, the study was done in Korean subjects, and the size may be

Table 2 The minimum and maximum heights of the uncinete process from the cranial border of the pedicle

Heights	Minimal (mm)	Maximal (mm)
C3		
Right	4.7 ± 1.1	6.8 ± 1.5
Left	4.9 ± 1.2	6.8 ± 1.5
C4		
Right	4.6 ± 1.3	6.1 ± 1.6
Left	4.8 ± 1.3	6.3 ± 1.6
C5		
Right	4.2 ± 1.6	5.9 ± 1.7
Left	4.4 ± 1.7	5.9 ± 1.6
C6		
Right	4.3 ± 1.8	5.7 ± 1.8
Left	4.4 ± 1.8	5.8 ± 1.9
C7		
Right	4.5 ± 1.5	5.6 ± 1.6
Left	4.8 ± 2.0	5.7 ± 1.9
Total		
Right	4.5 ± 1.5	6.0 ± 1.7
Left	4.7 ± 1.7	6.1 ± 1.7
Average	4.6 ± 1.6	6.1 ± 1.7

Note: Results are mean ± standard deviation.

Table 3 Maximum interpedicular distance and the interforaminal distance reported in the literature

Study	Maximal interpedicular distance (mm)	Interforaminal distance (mm)	Materials
Uğur et al ⁸	21.8 at C3 23.2 at C7		20 cadaveric specimens
Gupta et al ⁹	20.9 at C3 22.3 at C7		20 patients with CT
Ebraheim et al ¹⁰		22.6 ± 1.8 at C3 27.4 ± 2.3 at C6	54 cadaveric specimens
Güvençer et al ¹¹		28.0 ± 3.2 at C3 29.6 ± 3.4 at C4 30.5 ± 2.7 at C5 32.2 ± 3.3 at C6	12 cadaveric specimens
Vaccaro et al ¹²		25.9 ± 1.9 at C3 26.5 ± 1.9 at C4 27.8 ± 2.5 at C5 29.3 ± 2.7 at C6	50 patients with 2D CT
Hong et al ¹³		16.3 ± 1.9 at C5 17.5 ± 3.2 at C6 18.7 ± 3.2 at C7	350 patients with CT angiography, from midline to the center of vertebral artery
Russo et al ⁷		16.2 ± 1.9 at C3 14.9 ± 1.1 at C4 14.9 ± 1.1 at C5 17.2 ± 1.0 at C6	10 cadaveric specimens, from the midline to medial border of vertebral artery
Curylo et al ¹⁴		26.7 ± 3.2 at C3 25.0 ± 1.6 at C4 25.6 ± 1.8 at C5 26.4 ± 2.1 at C6	222 cadaveric specimens

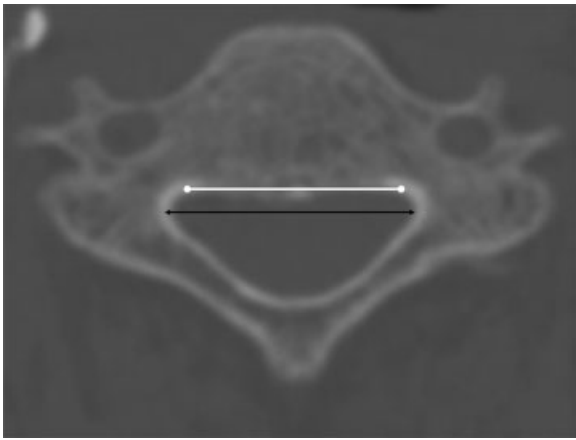


Fig. 7 The maximal interpedicular distance in the previous studies between the medial aspect of the pedicles (black line) and the interpedicular distance in the current study between the medial cortices of the pedicle where the pedicle meets the vertebral body (white line).

different in other races. Third, our images were not angiogram CTs. Therefore, our measurements cannot determine the true distance between the artery and the bony structures. Instead, we used the transverse foramen as the location of the artery. The foramen itself is probably 1 to 2 mm medial to the artery. Therefore, using the transverse foramen as the location of the

artery is not entirely accurate. Nevertheless, in the vast majority of cases, it is reasonable to state that one should keep the decompression of the foramen posterior and medial to the wall of the transverse foramen. Finally, the measurements were made in 51 cases. The small sample size is problematic. There may also be individual variations based on body size such that one cannot blindly trust the numbers that we describe for any given patient. It is recommended that the surgeon preoperatively measure it in all cases where uncinete resection is being planned. Therefore, the main value of our study is in defining the methodology for making the measurements, which surgeons should consider doing prior to uncinete resection surgery. Despite these shortcomings, to our knowledge, this study is the first report providing anatomic measurements that can be used as a guide for decompressing the neural foramen without injuring the artery.

In conclusion, our results suggest that in most cases, one can remove osteophytes between the cervical pedicles within the spinal canal up to 10 mm laterally from the midline and safely remove uncinete process osteophytes up to 13 mm laterally from the midline and up to 4 mm of the height of the uncinete process from C3 to C7 without violating the transverse foramen. It should be noted that these numbers should only serve as a guide to where the artery is most likely to lie but that individual measurements may differ due to anatomic variations. Therefore, it is recommended that the surgeon examine preoperative CT or magnetic resonance images prior to performing such decompressions.

Table 4 Width and height of uncinete process reported in the literature

Study	Width (mm)	Height (mm)	Materials
Pait et al ¹	6.0 at C3 6.1 at C4 5.3 at C5 5.8 at C6 6.7 at C7	6.0 at C3 7.5 at C4 5.8 at C5 8.1 at C6 6.4 at C7	6 cadaveric specimens
Uğur et al ²	11.2 ± 2.3 at C3 11.8 ± 1.3 at C4 12.3 ± 1.5 at C5 12.8 ± 1.6 at C6 13.0 ± 1.9 at C7	4.9 ± 0.9 at C3 5.6 ± 1.0 at C4 5.7 ± 1.0 at C5 6.3 ± 0.9 at C6 6.6 ± 1.2 at C7	49 cadaveric specimens
Lu et al ⁶	12.5 ± 1.5 at C5 11.6 ± 1.3 at C7	5.0 at C3 5.8 at C4 5.8 at C5 5.8 at C6 5.0 at C7	54 cadaveric specimens
Russo et al ⁷		5.5 ± 1.3 at C3 6.2 ± 2.2 at C6	10 cadaveric specimens
Ebraheim et al ¹⁷		5.0 at C3 5.8 at C4 5.8 at C5 5.8 at C6 5.0 at C7	54 cadaveric specimens

Disclosures

Moon Soo Park, none

Seong-Hwan Moon, none

Tae-Hwan Kim, none

Jae Keun Oh, none

Jae Kyun Jung, none

Hyung Joon Kim, none

K. Daniel Riew, Board membership: CSRS, KASS, AOSpine;

Royalties: Osprey, Biomet, Medtronic Sofamor Danek;

Stock/stock options: Amedica, Benvenue, Expanding Or-

thopedics, Nexgen Spine, Osprey, Paradigm Spine, Spinal

Kinetics, Spineology, Vertiflex, PSD.

References

- 1 Pait TG, Killefer JA, Arnautovic KI. Surgical anatomy of the anterior cervical spine: the disc space, vertebral artery, and associated bony structures. *Neurosurgery* 1996;39(4):769–776
- 2 Uğur HC, Uz A, Attar A, Tekdemir I, Egemen N, Elhan A. Anatomical projection of the cervical uncinat process in ventral, ventrolateral, and posterior decompressive surgery. *J Neurosurg* 2000;93(2, Suppl):248–251
- 3 Yilmazlar S, Kocaeli H, Uz A, Tekdemir I. Clinical importance of ligamentous and osseous structures in the cervical uncovertebral foraminal region. *Clin Anat* 2003;16(5):404–410
- 4 Brigham CD, Tsahakis PJ. Anterior cervical foraminotomy and fusion. Surgical technique and results. *Spine (Phila Pa 1976)* 1995;20(7):766–770
- 5 Oh SH, Perin NI, Cooper PR. Quantitative three-dimensional anatomy of the subaxial cervical spine: implication for anterior spinal surgery. *Neurosurgery* 1996;38(6):1139–1144
- 6 Lu J, Ebraheim NA, Yang H, Skie M, Yeasting RA. Cervical uncinat process: an anatomic study for anterior decompression of the cervical spine. *Surg Radiol Anat* 1998;20(4):249–252
- 7 Russo VM, Graziano F, Peris-Celda M, Russo A, Ulm AJ. The V(2) segment of the vertebral artery: anatomical considerations and surgical implications. *J Neurosurg Spine* 2011;15(6):610–619
- 8 Uğur HC, Attar A, Uz A, et al. Surgical anatomic evaluation of the cervical pedicle and adjacent neural structures. *Neurosurgery* 2000;47(5):1162–1168, discussion 1168–1169
- 9 Gupta R, Kapoor K, Sharma A, Kochhar S, Garg R. Morphometry of typical cervical vertebrae on dry bones and CT scan and its implications in transpedicular screw placement surgery. *Surg Radiol Anat* 2013;35(3):181–189
- 10 Ebraheim NA, Lu J, Brown JA, Biyani A, Yeasting RA. Vulnerability of vertebral artery in anterolateral decompression for cervical spondylosis. *Clin Orthop Relat Res* 1996;(322):146–151
- 11 Güvencer M, Men S, Naderi S, Kiray A, Tetik S. The V2 segment of the vertebral artery in anterior and anterolateral cervical spinal surgery: a cadaver angiographic study. *Clin Neurol Neurosurg* 2006;108(5):440–445
- 12 Vaccaro AR, Ring D, Scuderi G, Garfin SR. Vertebral artery location in relation to the vertebral body as determined by two-dimensional computed tomography evaluation. *Spine (Phila Pa 1976)* 1994;19(23):2637–2641
- 13 Hong JT, Park DK, Lee MJ, Kim SW, An HS. Anatomical variations of the vertebral artery segment in the lower cervical spine: analysis by three-dimensional computed tomography angiography. *Spine (Phila Pa 1976)* 2008;33(22):2422–2426
- 14 Curylo LJ, Mason HC, Bohlman HH, Yoo JU. Tortuous course of the vertebral artery and anterior cervical decompression: a cadaveric and clinical case study. *Spine (Phila Pa 1976)* 2000;25(22):2860–2864
- 15 Tubbs RS, Rompala OJ, Verma K, et al. Analysis of the uncinat processes of the cervical spine: an anatomical study. *J Neurosurg Spine* 2012;16(4):402–407
- 16 Civelek E, Kiris T, Hepgul K, Canbolat A, Ersoy G, Cansever T. Anterolateral approach to the cervical spine: major anatomical structures and landmarks. Technical note. *J Neurosurg Spine* 2007;7(6):669–678
- 17 Ebraheim NA, Lu J, Biyani A, Brown JA, Yeasting RA. Anatomic considerations for uncovertebral involvement in cervical spondylosis. *Clin Orthop Relat Res* 1997;(334):200–206