

216

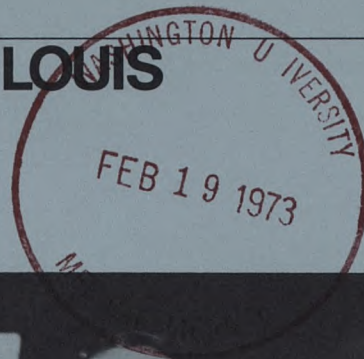
A COMMUNITY PUBLICATION OF

THE JEWISH HOSPITAL OF ST. LOUIS

216 SOUTH KINGSHIGHWAY • ST. LOUIS, MISSOURI 63110

FEBRUARY 1973
VOL. 22 NO. 1

SHELVED IN ARCHIVES



VOL. 22, NO. 1 FEBRUARY 1973

216 is published

by the

Publications Department

of

THE JEWISH HOSPITAL OF ST. LOUIS

Edward B. Greensfelder

president

David A. Gee

executive vice president

Barbara Janes

*director of community relations
and development*

Linda Mantle

director of publications

Charlotte Fasnacht

publications assistant

On the cover . . .

*Miss Barbara Safron, patient relations
representative, and Mr. Calvin Maledy,
security officer, display new uniforms
now used in their respective departments.
See related stories, pages 4 and 5.*

CONTENTS

Mrs. Cohen, Mr. Simpkins Honored by City	2
Board Members Named	3
Patient Relations to Serve You Better	4
New Look for Security Officers	5
Nursing Service Director Plans Future Course	6
78 Graduate From School of Nursing	7
Medical Staff News	10
Jewish Hospital "At Your Service"	13
Dr. Steinberg Tours Russia	16
Recent Gifts Recognized	17
Tribute Fund	18



Mrs. Stanley Cohen

Mrs. Stanley M. Cohen and Joseph A. Simpkins, both members of the Hospital's Board of Directors, have recently been honored as citizens of outstanding achievement in the St. Louis area.

Sharing and caring fall within the realm of daily routine for Shirley Cohen. Though her family and home always come first, her 'free' time is equally productive as she shares it with people because she cares. For her intense interest in the welfare of others and her dynamic involvement in the community and especially with Jewish Hospital, Mrs. Cohen has been recognized as the 1972 Globe-Democrat Woman of Achievement in Civic Accomplishment.

Mrs. Cohen has worked tirelessly for the Hospital for many years and is indeed the channel through which many progressive changes have been implemented. She began her volunteer service visiting patients with the library cart and working at the information desk; gaining better insight into patient needs and hospital services. She has worked energetically for change and improvement within the Hospital. As a member of the Board of Directors she is better able to effect these changes and is in part responsible for piped-in music, a comfortable x-ray waiting room and, in certain cases, the lengthening of hospital gowns among other things.

Mrs. Cohen also finds time to be an active member of Temple Israel, Miriam Lodge, Brandeis Women, Hadassah and the National Council of Jewish Women. She is a board member of the Associates of Jewish Hospital and has been chairman of the Camelot television auction and president of the Jewish Hospital Auxiliary.

She has also been actively involved in the Jewish Federation Women's Division in a number of capacities. Recently she was appointed to head the Grand Givers Division of the Jewish Federation Women's Division Campaign. Just one more way through which she can demonstrate her concern for the welfare of people everywhere and stand by a commitment to try to make things better.

HOSPITAL BOARD MEMBERS RECOGNIZED FOR OUTSTANDING ACHIEVEMENTS



Joseph Simpkins

Busy board member Joseph A. Simpkins loves kids, and people in general. For his tireless efforts in aiding others, especially needy children, he was the recipient of the 1972 Humanities Award, citing him as "a champion of unfortunate children, dynamic business leader, gracious servant of God and of his fellowmen".

The award, presented annually through the Globe-Democrat, is accompanied by a \$1,000 check, which Mr. Simpkins has designated to his four favorite charities.

In presenting the citation, G. Duncan Bauman, Globe-Democrat publisher, praised Simpkins as "a tireless full-time humanitarian whose good deeds touch large groups, and individuals."

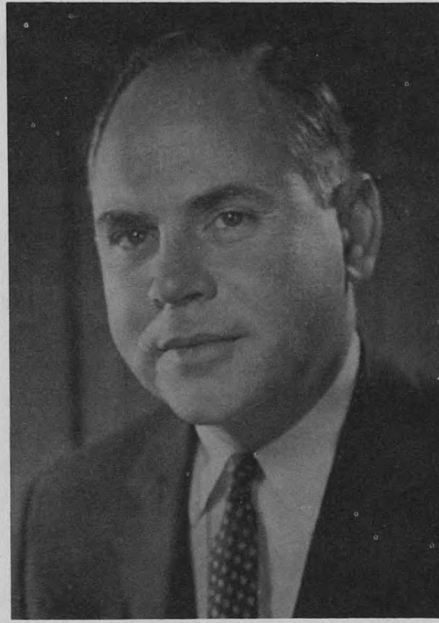
The citation hails Simpkins as "an outstanding example of a business leader who has mastered the art of commerce, but far more important, has compassionately shared his rewards quietly and effectively, for the benefit of unfortunate children. He has given time and devotion to worthy causes for the benefit of our community, making it a better place in which to live."

Demonstrating his deep concern for the welfare of his fellow man is not new to Joe Simpkins. It's been part of his life for many years, dating back to his first Christmas party for needy children during his auto agency days in Wellston. The party became an annual event and the distributing of toys and candy to a few hundred youngsters evolved into a tremendous extravaganza downtown.

Today Joe Simpkins remains active in community projects. He's one of the "silent" sponsors of Dismas House, where ex-convicts are housed and helped to start anew. He has been honored for his charitable work by numerous organizations including the City of Hope and the State of Israel. Since 1963 he has been a key figure in the St. Louis Variety Club's "telethons" on KPLR-TV to aid needy and handicapped children. Currently he serves as 1973 chairman of the Jewish Federation-Israel Emergency Fund Campaign.



Franklin A. Jacobs



Lee Kling

Two New Members Named to Board, Hospital Officers Re-elected

Franklin A. Jacobs and Lee Kling were newly named to the Hospital Board of Directors at the January 18 meeting.

Mr. Jacobs is president and chairman of the board of Falcon Products, Inc. He also serves as vice president of the Jewish Federation, vice president of the Jewish Community Centers Association and chairman of the Jewish Federation's 25th Anniversary of Israel committee. He is a member of the United Jewish Appeal Young Leadership Cabinet, the Young Presidents Organization and is currently president of the Brandeis Club of St. Louis.

A graduate of the University of Illinois, Mr. Jacobs is married and has three children.

Mr. Kling is the founder and president of Insurance Consultants, Inc. He serves on the boards of the Jewish Federation, First State Bank and Trust Company, Tiffany Industries, Inc., Falcon Products, Inc., Weil-McLain Company, Inc., Missouri Arena Corporation and Professional Specialties, Inc.

Mr. Kling, a graduate of Washington University, is married and the father of four children.

Edward B. Greensfelder was re-elected president of the Hospital. Other officers

re-elected are Lee M. Liberman, Mrs. Morton D. May, Stanley M. Richman, Edwin G. Shifrin, Elliot H. Stein, vice presidents; Norman Bierman, secretary; Lee M. Liberman, treasurer, and Elliot H. Stein, assistant treasurer.

Harry N. Soffer and Irvin Bettman Jr. were elected to Senior Member status. Other board members re-elected to three year terms are Charles B. Baron, Mrs. Stanley M. Cohen, Edward B. Greensfelder, Stanley M. Richman, Louis S. Sachs, Edward Samuels, Harry T. Schukar, Joseph Simpkins, Harold S. Blatt and Richard L. Yalem.

Hospital Renders \$1.3 Million In Free Care

Jewish Hospital rendered \$1.3 million in free care during 1972. The Hospital received \$250,000 from the Jewish Federation and \$99,000 from United Fund to partially offset these expenses. During 1972, more than 16,000 patients were admitted; 1,800 babies were born, and there were 48,000 patient visits to the clinics and emergency room. More than 600,000 laboratory tests and 50,000 radiologic procedures were performed.

New Facility Named In Honor Of Sydney M. Shoenberg

The nine-story patient care pavillion now under construction along Forest Park Boulevard will be officially dedicated next year as the



Sydney M. Shoenberg

Sydney M. Shoenberg Pavilion, in recognition of generous gifts from members of the shoenberg family to the Hospital's Expansion Program. The new facility will represent the most advanced designs and techniques for rendering the best care possible.

The Shoenberg family has maintained an active interest in the Hospital from the time it was founded in 1900. Moses Shoenberg, Sydney's father, was one of the original contributors to the first Jewish Hospital. In 1929 the Moses Shoenberg School of Nursing was dedicated at 306 South Kingshighway, made possible by a gift from Mrs. Moses Shoenberg and her son. Funds provided by the family in 1959 enabled the Hospital to purchase the property at 4949 Forest Park Boulevard, a structure known as the Shoenberg Research Building which houses the Department of Otolaryngology and its Divisions of Audiology and Speech Pathology. The family has also made major contributions to the Hospital's endowment program, and in 1971, established the Sydney M. and Stella H. Shoenberg Chair in Medicine at Jewish Hospital and Washington University Medical School.

Mr. Shoenberg, and two of his sons, Sydney, Jr. and John, are life members of the Hospital Board of Directors. John served as President of the Board from 1958-63. A third son, Robert, is active in community activities.

PATIENT RELATIONS TO SERVE YOU BETTER

Introducing... the girls in blue or grey or any combination of their newly acquired casual uniforms. They're the Patient Relations Representatives now wearing coordinated vests, pants, skirts, blazers and blouses for easy identification by patients and visitors alike.

Patient Relations Representatives are here to make the patient's stay as comfortable and pleasant as possible. As representatives of the Hospital administration and a segment of the Community Relations Department, these girls might be called liaisons between the patient and the various areas of the Hospital with which the patient comes in contact.

Initiated in 1962, the Patient Relations program serves as a means of providing patients with some of the extras. Each day representatives visit patients in their rooms. They try to see all patients at least once during their hospital stay. Any problems in areas not directly affecting professional personnel can be taken care of by the patient relations representatives.

The duties of the representatives are many and varied as they daily meet the public. Visiting and comforting the patient can grow into investigations dealing with Admitting, Housekeeping, Dietary, Nursing, lost and found articles or passing a comment on to the private physician. Comments written or telephoned in, after a patient has returned home, are also investigated and reported to the departments involved.

Visiting with members of the patient's family can be just as important as visiting with the patient; they are tense and nervous about the patient and can easily misunderstand procedures Hospital personnel take for granted.

One patient relations representative spends each morning in the Radiology Department fulfilling on-the-spot patient needs. She makes her initial contact with

a visit to the patient the day prior to the x-ray examinations and distributes x-ray cards which thoroughly explain the procedures which will take place.

Materials distributed to the patient by the patient relations department, include the perfect visitor brochures, patient kits and the 216 periodical. These pamphlets contain important guidelines and information about the Hospital.

Mrs. Fran Stovall, Director of Patient Relations, is available at all times during the day to explain Hospital policy and interpret procedures for the patients. She is a notary public and also serves as the patient liaison for balloting during any election.

In a busy teaching Medical center it is a constant endeavor by the public relations representatives to make the patient and his family feel they mean it when they say "we care about you and it is our pleasure to serve you."



As part of her daily routine, Mrs. Carol Kralik distributes hospital information while visiting patients.



Modelling their new uniforms, the patient relations representatives are, from left, Miss Barbara Safron, Barbara Tarantola, Mrs. Carol Kralik and Mrs. Fran Stoval, Director of Patient Relations.

New Look For Hospital Employed Security Officers

What is security? Well, it might be considered a state of mind, a calm feeling of safe. To Curtiss Morrison and Michael Moehrle security is, in fact, the task of running the Hospital's recently reorganized security system.

As of September 20, the Hospital's Department of Security and Ancillary Services began using Hospital-employed security officers in an effort to provide the most efficient means of safety precautions for Hospital employees and visitors alike.

With the title Director of Security and Ancillary Services, Mr. Morrison has the responsibility of heading the entire Hospital security force which includes 16 men and women. This not only encompasses the Hospital itself, but also the nurses' residence, the Central Medical Building, the parking deck and the Shoenberg Research Building. Mr. Morrison maintains contact with the St. Louis Police Department as well as with other security departments within the Washington University Medical Center in a cooperative effort to ensure ultimate safety and security for the entire Medical Center area.



Security officer Richard Kane stands at the Information Desk ready to provide escort service for visitors leaving the Hospital after 4 p.m.



The new Hospital-employed security officers now wear uniforms. Second from left is Mr. Curtiss Morrison, Director of Security and Ancillary Services.

The new security officers were hired according to previous security experience and law enforcement training. They're on duty 24 hours a day, seven days a week. Prior to assuming their duties, they received one week of intensive training. For 24 hours of the 40-hour training session, Lt. William Clifford shared his expertise with the new force acting as instructor. Lt. Clifford is a retired officer of the St. Louis Police Department, former commander of the St. Louis Police Academy and a graduate of the FBI Academy. The remaining sessions included film presentations, demonstrations and lectures.

Hospital security officers can be identified by their grey slacks and blue blazers adorned with the Hospital logo. Women officers wear blue pantsuits. In addition to their security duties and responsibilities for fire and safety and disaster procedures, they also maintain the Hospital's escort service for employees and visitors from 4 p.m. until 9 p.m., and will come to the rescue with a battery charger when necessary.

Mr. Morrison joined the Hospital as Director of Security in November, 1971. Previously he served four years as Chief of Security at Meramec Community College. Prior to that he was with the St. Louis Police Department for ten years in several capacities — detective, juvenile officer and community relations liaison.

Mr. Moehrle, Assistant Director of Security, studied law enforcement in college and has five years police experience. While in the service he was Communications Center Supervisor for President Kennedy's staff.

Both Mr. Morrison and Mr. Moehrle are optimistic about the new security system and feel its warm acceptance by the public and personnel alike portends good things for the future.

NEW NURSING DIRECTOR PLANS FUTURE COURSE

Mrs. Brenda Ernst, R.N., B.S., who was recently named Director of Nursing Service at the Hospital, is "very excited about my new position and looking forward to '73 changes in the nursing department."

Mrs. Ernst has been on the Hospital staff since she graduated from the Jewish Hospital School of Nursing in 1961. Her most recent post was Assistant Director of Nursing for the Department of Rehabilitation Medicine. In 1968 she was the first recipient of the Hospital Auxiliary Life Membership Scholarship which enabled her to attend St. Louis University where she received her B.S. degree in nursing.

Mrs. Ernst is currently formulating plans for the future within the nursing department. "The role of the nurse today is changing," she affirms. "Nurses are now being asked to take on more responsibilities and their positions must reflect this by allowing them the authority to make independent decisions in caring for patients and in planning patient care."

"Hospitals today are moving toward specialization and the same trend exists in the nursing field," says Mrs. Ernst. Citing the new renal and orthopedic units as examples of these specialized areas, Mrs. Ernst feels that "nurses will have to become specialists too and develop expertise in a specific area."

Mrs. Ernst and her staff are presently working on a revitalization of the team nursing concept which involves planned patient-centered care by a team of nursing personnel working together as a structured group under the direction of a team leader. This way the needs of the patients can be easily identified and the varying skills of the team directly applied to meet these needs.

Mrs. Ernst also feels horizontal promotions for nursing personnel should be implemented. This would allow a nurse to be rewarded while continuing to work directly with patients. Traditional promotions have been away from direct patient care into administrative and supervisory positions.

Another innovation which will soon involve virtually every area within the Hospital is the installation of a computer system. This will pose another concern for Mrs. Ernst in working out the details within Nursing Service so that the professional nurses do not become computer operators.

Mrs. Ernst feels her youth to be an advantage in her new capacity having been directly involved with the newest trends in nursing. She is looking forward to the challenges of the next year and feels she has an excellent supportive staff of assistant directors, supervisors and head nurses, in addition to the support and cooperation of staff physicians.



Mrs. Brenda Ernst, R.N.

78 GRADUATE FROM SCHOOL OF NURSING

January 14 marked an end to 27 months of study and training, and a beginning to a challenging career in the noble profession of nursing for 78 students who were graduated from the Jewish Hospital School of Nursing.

The Sunday afternoon ceremony at United Hebrew Temple opened with an invocation by Rabbi Joseph Rosenbloom of Temple Emanuel. A performance by the student choir followed. David A. Gee, executive vice president, presided, and Joel L. Zeffren, M.D., of the Hospital's medical staff, was the featured speaker. Ronald Owens, the first male student to graduate from the School of Nursing, addressed the senior class.

Miss Margaret Loh, R.N., performed her last official act as Director of the Department of Nursing as she presented members of the 1973 graduating class to Edward B. Greensfelder, Hospital president, who awarded the diplomas.

Miss Sally Ragin and Mrs. Linda Gass Sherman are the 1973 recipients of the two top scholarship awards. Miss Ragin, daughter of Mr. and Mrs. Eli Ragin, received The Jewish Hospital Auxiliary Scholarship of \$1,000 which is presented annually to the student ranking highest in the graduating class. It is based on scholastic standing in theory and practice, personality and potential for growth and development in nursing.

Mrs. Sherman was awarded the \$500 Hattie Waldheim Scholarship as the student ranking second in the class. She is the daughter of Mr. and Mrs. James Gass.

Three Franc Honor Awards were also presented at the graduation. Miss Lynn Eggert received a \$100 savings bond given annually to the student who ranks first in the class at the completion of the first level courses. She received a Gold Key in recognition of her achievement of outstanding scholastic ability, a 4.0 grade point average.



A \$25 savings bond was presented to Mrs. Linda Holzem Lawrence who was voted outstanding for kindness and consideration shown to patients.

Miss Barbara Merrell also received a \$25 savings bond as the student who exhibited outstanding interest and participation in student activities.

GRADUATE SCHOLARSHIP AWARDS

As part of the ceremonies, scholarships were awarded to 12 graduate nurses to help further their nursing educations through graduate studies.

The Jewish Hospital Auxiliary honored three graduate nurses with **Life Membership Scholarships**. Mrs. Willa Jean Nelson, evening supervisor in Nursing Service, Mrs. Katherine Bullerdieck, assistant head nurse on 3 Steinberg, and Miss Maureen O'Connell, staff nurse on 3 south, are this year's recipients. The Auxiliary scholarships are made available through the interest accrued on Life Memberships. Started in 1968, the Life Membership Endowment Scholarship Fund provides three scholarships each year for graduate nurses.



Miss Sally Ragin receives warm congratulations on being awarded the \$1,000 Hospital Auxiliary Scholarship which is presented to the student ranking highest in the graduating class.



Mrs. Linda Gass Sherman was awarded the \$500 Hattie Waldheim Scholarship as the student ranking second in the graduating class.

The **Elsie Probst** Scholarship, given annually by Jacob G. Probst, M.D., and his children to a graduate nurse to help further her education in surgical nursing, was awarded to Miss Eloise DeLap, coordinator, Level III, at the School of Nursing.

Mrs. Carolyn Ingerson, Nurse Recruiter, received the **Lillie E. Green Scholarship**, also awarded annually through the efforts of Dr. Probst.

The **Leo C. Fuller Scholarship**, awarded yearly to a graduate nurse for advanced education in her particular field of nursing, was presented to Miss Patricia Frailey, head nurse on 4 south.

Mrs. Emily Lazarus, evening supervisor in Nursing Service, was awarded the annual **Sam and Jeannette Koplak Scholarship**.

The **Clara Monheimer-London Scholarship** is awarded through the interest of Mr. Jack L. London and the trustees of the Monheimer-London Trust. The scholarship makes funds available for a graduate nurse to attend an advanced educational institute each year. Mrs. Betty Danzie, head nurse on 2 center, the new orthopedic unit, will attend an orthopedic institute during the year.

The **Frieda H. Leonson Scholarship** was awarded to Mrs. Linda Hlaca, staff nurse on 2 south. The Leonson Scholarship was established by the late Mr. Leon Leonson in honor of his wife.

Miss Susan Graves, coordinator, Level II, at the School of Nursing, was awarded the **Helen A. Salomon Scholarship**.

The **Barney Fisher Scholarship Fund**, which was established by Mrs. Goldie Fishman in memory of her son, was awarded to Mrs. Nina Westhus, instructor in Nursing Education.



Participants in the graduation program included: Edward B. Greensfelder, Hospital president; Mrs. Stanley M. Cohen, board member and head of the Committee on Nursing; Mrs. M. Erwin Bry, Auxiliary president; Dr. Leo Sachar, Medical Staff Association president; David A. Gee, Hospital executive vice president; Miss Margaret Loh, R.N., former Director of Nursing; Dr. Joel L. Zeffren, featured speaker, and Miss Lavera Ryder, R.N., Director of the School of Nursing.



A performance by the Student Choir opened the 1973 graduation ceremony.

The following is a list of the 1973 graduation class:

Kathleen Marie Austermann, Florissant, Mo.; Annette Ruth Berman, University, City, Mo.; Christine Bernsen, Florissant, Missouri; Gayle Marie Biekert, Belleville, Ill.; Berneta Ann Brautigam, Washington, Mo.; Teresa Reis Brennan, St. Louis, Mo.; Kathryn Ann Brooke, Richardson, Tex.

Nancy Marie Clarke, Florissant, Mo.; Deborah Ann Cross, St. Louis, Mo.; Beverly Jean Davidson, Hazelwood, Mo.; Kristine Dawn DeBres, St. Louis, Mo.; Mary Louise Dehnbostel, Christopher, Ill.; Renee' DeLaurent, Wilsonville, Ill.; Verna Josephine Dickson, Alton, Ill..

Wendy Sue Dill, Belleville, Ill.; Catherine Ann Eckberg, Ferguson, Mo.; Christine Louise Eckelkamp, Washington, Mo.; Marjorie Ann Elze, St. Louis, Mo.; Elaine Holland Gaines, St. Louis, Mo.; Loretta Klekar Gawedzinski, St. Louis, Mo.; Linda Ann Gibbons, St. Louis, Mo.

Cynthia Ann Freitag Glastetter, Overland, Mo.; Linda Roseann Greene, Overland, Mo.; Cynthia Ann Haas, Belleville, Ill.; Rochelle Ramona Haslam, St. Louis, Mo.; Tamara Ann Hoeffft, Florissant, Mo.; Shelley Marie Hogan, Berkeley, Mo.

Patricia Marie Hooks, Millstadt, Ill.; Shelley Anne Hume, St. Charles, Mo.; Joan Johanningmeier, St. Louis, Mo.; Pamela Ann Johnson, Affton, Mo.; Sandra Irene Kaufman, East St. Louis, Ill.; Carol Margit Kayser, St. Louis, Mo.; Diane Desmond Lambrechts, Hazelwood, Mo.

Herlinda Holzem Lawrence, St. Louis, Mo.; Sharon Louise LeGrand, St. Louis, Mo.; Suzanne Carol Lorenz, St. Louis, Mo.; Kathleen Marie Lyndon, St. Louis, Mo.; Lana Jo Macke, St. Louis, Mo.; Pamela Susan Mahach, Collinsville, Ill.; Marsha Marie Marre, St. Louis, Mo.

Barbara Jean Merrell, St. Louis, Mo.; Susan Elizabeth Messbarger, Belleville, Ill.; Barbara Jean Mehrstens, Fults, Ill.; Judith Clare Meyer, St. Louis, Mo.; Elizabeth Millner, University City, Mo.; Andrea Kay Muehlberg, St. Louis, Mo.; Mary Jane Mullen, St. Louis, Mo.

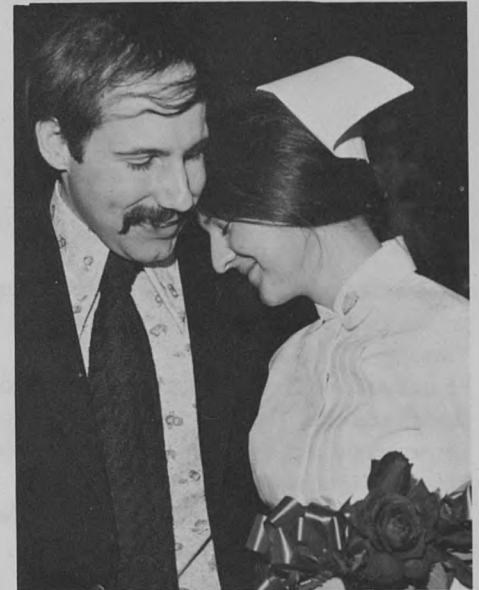
Carla Marie Murray, St. Louis, Mo.;

Janet Katherine Noftsinger, St. Louis, Mo.; Shirley Carol Nowicki, St. Louis, Mo.; Colleen Mary O'Day, Bridgeton, Mo.; Madeline Marie O'Donnell, St. Louis, Mo.; Ronald Carey Owens, St. Louis, Mo.; Dolores Ann Patten, St. Louis, Mo.

Mary Susan Quirin, Belleville, Ill.; Sally Ragin, Olivette, Mo.; Theresa Marie Rice, St. Louis, Mo.; Barbara Jean Rosen, Florissant, Mo.; Gerianne Marie Ryterski, St. Louis, Mo.; Linda Irene Schulte, Bridgeton, Mo.; Roseanne Marie Servant, Florissant, Mo.

Patricia Ann Sewing, Litchfield, Ill.; Mary Ruth Davis Sherrill, Fenton, Mo.; Linda Gass Sherman, Florissant, Mo.; Eleanor Patrice Simpson, St. Ann, Mo.; Lanette Dee Squires, Granite City, Ill.; Judith Magdaline Staebel, Ballwin, Mo.; Mary Ellen Temme, Jennings, Mo.

Patricia Ann Thompson, Belleville, Ill., Jeanne Lynn Ugo, Wilsonville, Ill.; Jan Michelene Weber, Belleville, Ill.; Melanie Lynn Weiter, St. Louis, Mo.; Jane Frances Wessels, St. Louis, Mo.; Suzanne Marie Whiteley, St. Louis, Mo.; Barbara Eileen Winschief, St. Louis, Mo.; Peggy Ann Wittenauer, St. Louis, Mo.



Graduate scholarship award winners are, back row from left, Miss Eloise DeLap, R.N., Miss Susan Graves, R.N., Mrs. Carolyn Ingerson, R.N., and Mrs. Jean Nelson, R.N. Front row, from left, Mrs. Betty Danzie, R.N., Mrs. Emily Lazarus, R.N., Miss Patricia Frailey, R.N., and Mrs. Nina Westhus, R.N.

DR. JEROME SIMON HONORED BY ST. LOUIS MEDICAL SOCIETY

The St. Louis Medical Society has awarded an Honor Membership to Dr. Jerome I. Simon in recognition of his many contributions to the medical community. He has been acknowledged by his peers as always having a sense of obligation to be a skillful practitioner and articulate teacher of surgery. He has served as president of the St. Louis Medical Society, the St. Louis Surgical Society and has been a longtime staff member of the St. Louis University group and Jewish Hospital.



NEW STAFF APPOINTMENTS

New appointments to the Hospital's Medical Staff are Lester T. Reese, M.D., assistant attending physician, Department of Medicine; Mary Ann Bednar, Ph.D., associate staff, Department of Psychiatry; Irshad H. Chaudry, Ph.D., associate staff, Department of Surgery, and Asrar B. Malik, Ph.D., associate staff, Department of Surgery.



MEDICAL STAFF NEWS



Robert Lang, M.D., Cenza Boisseau and Louis V. Avioli, M.D., presented a paper, "Beneficial Effects of Chronic Calcitonin Therapy in Osteogenesis Imperfecta", to the American Federation for Clinical Research in Chicago in November.

Godofredo M. Herzog, M.D., spoke on Experiences with Laparoscopy to the Pan American Medical Association in Miami in November.

Jack Hartstein, M.D., was a visiting professor at the Indiana University Department of Ophthalmology. He also presented a paper, "Soft Lenses in Keratoconus", before the Belgian Ophthalmological Society in Brussels in January.

Sol Londe, M.D., spoke on Hypertension in Children at Southwest Medical School in Dallas in November.

Morton A. Levy, M.D., spoke at the Scientific Products Seminar in St. Louis on The Current Status of Hepatitis Testing.

Melvin M. Schwartz, M.D., attended both the Midwest Postgraduate Seminar on Obstetrics and Gynecology and his 25th medical class reunion in Omaha in November. He also participated in the Gyn Travel Club which met in Chicago in October.

Alex C. Sonnenwirth, Ph.D., director, Division of Microbiology, was the co-convenor with J. Sherris, M.D., U. of Washington (Seattle) School of Medicine, of a session on "Laboratory Techniques" at the Interscience Conference on Antimicrobial Agents and Chemotherapy in Atlantic City in September. He also presented a paper "Incidence of Intestinal Anaerobes in Blood Cultures" at the International Conference on Anaerobic Bacteria at the Center for Disease Control in Atlanta in November. Dr. Sonnenwirth was the author and coauthor of three papers which appeared in the December issue of *American Journal of Clinical Nutrition* — "Evolution of Anaerobic Methodology," "Bacteroidaceae Endotoxin Detection by Limulus Assay" (with E. T. Yin, E. M. Sarmiento and Stanford Wessler, M.D., Physician-in-Chief), and "Human

Antibody to Bacteroidaceae" (with Drs. J.D. Quick and H.S. Goldberg). He also authored two chapters in the book, *Clinical Dermatology*, published in October — "Introduction to Clinical Bacteriology" and "Immunity in Tuberculosis and the Tuberculin Test."

Ivan T. Myers, M.D., attended the Emil Novak Ob-Gyn Postgraduate Course at John Hopkins Medical School in October.

Mary M. Bishop, M.D., spoke on "Psychology of Women" to the Women's Auxiliary of Psychoanalytic Foundation at St. Louis.

Joseph M. Dooley, Jr. M.D., spoke on "Neurological Disorders Associated with Abnormalities of Sweating." He was a participant in a seminar on the Autonomic-Nervous System in Colorado Springs in October.

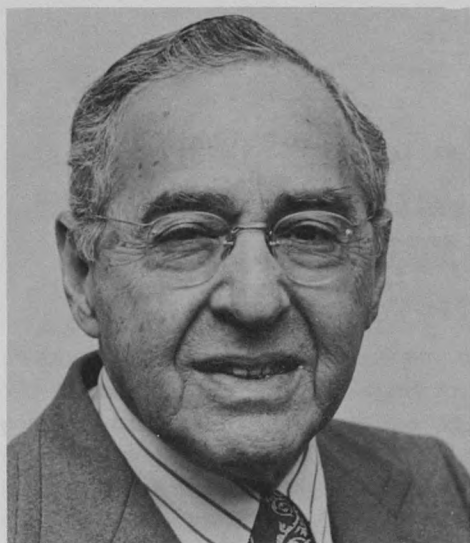
Jerome J. Gilden, M.D., and **Jason P. Blake, associate executive director**, represented Jewish Hospital at the Clean Air Symposium at the Cleveland Clinic in November. Dr. Gilden attended the Southern Medical Association's convention in New Orleans in November.

Stanley Reitman, M.D., attended the American College of Cardiology convention on Paths of Progress in Cardiovascular Disease in New York in December.

Cary A. Presant, M.D., co-authored a paper, "Characterization of the Cell Surface Receptor for the Agaricus bisporus Hemagglutinin", in the November issue of *The Journal of Biological Chemistry*.

Harvey Liebhaber, M.D., spoke on hepatitis on Channel 11's Morning Affair television program in December.

E. James Anthony, M.D., was one of five medical researchers who participated in a series of news media sessions in Washington, D.C., sponsored by the National Institute of Mental Health to alert the public to new developments in such areas as autism, dyslexia, community mental health and basic child development.



Paul Lowenstein, M.D.

Dr. Lowenstein Honored At Angiology Convention

During the week of January 22, Dr. Arthur E. Baue, Surgeon-in-Chief, Dr. Alexander Geha, Dr. William Shieber and Dr. Thomas Covey, all from the Department of Surgery, attended the meeting of the American College of Angiology in San Juan.

The five papers they presented were dedicated to Dr. Paul Lowenstein, president of the American College of Angiology, in recognition of his many years of devoted service and leadership in the Department of Surgery at Jewish Hospital. Following the meeting, other papers will be added to make an entire volume of a journal as a tribute to Dr. Lowenstein.

Currently Dr. Lowenstein is consultant in surgery at the Hospital. He has been on the staff since 1922.

PSYCHIATRIST SPEAKS AT SCIENTIFIC MEETING

Dr. Charles Pinderhughes, Director of Psychiatric Research and professor of psychiatry at Boston University School of Medicine, spoke at a Department of Psychiatry scientific meeting on "Pathogenic Programming of Human Systems". The conference was made possible in part by a grant from Merck, Sharpe & Dohme, a division of Merck & Company, Inc.



Dr. Leo A. Sachar, right, newly elected president of the Medical Staff Association, presents a plaque to Dr. Harry D. Rosebaum, outgoing president, in recognition of his outstanding service to the organization.

Dr. Sachar Elected President Of Medical Staff Association

Leo A. Sachar, M.D., has been elected president of the Medical Staff Association of the Hospital. He was elected to the two-year term at the group's semi-annual meeting held recently.

Other newly-elected officers include: Franz U. Steinberg, M.D., vice president; Martin Bergmann, M.D., secretary; Arthur Gale, M.D., treasurer, and Jerome Gilden, M.D., president-elect.

Dr. Susman Named Radiology Director Succeeds Dr. Hyman Senturia

Dr. Noah Susman has been named Director of the Department of Radiology at the Hospital replacing Dr. Hyman Senturia who was Director from 1953 to 1972.

Previously Dr. Susman was associate director of the Department. He has been associated with Jewish Hospital since he received his M.D. degree from Washington University School of Medicine in 1952. He spent his internship and residency at Jewish Hospital with one year of residency at Mallinckrodt Institute of Radiology.

Dr. Susman is assistant professor of Clinical Radiology at Washington University Medical School and is



consultant at St. Joseph's Hospital in St. Charles and St. Elizabeth's Hospital in Granite City, Illinois.

Dr. Kipnis Named W.U. Medical Head

Dr. David M. Kipnis has been named Washington University School of Medicine's Busch Professor and head of the Department of Medicine, Chancellor William H. Danforth, M.D., announced recently.

Dr. Kipnis, who has been a professor of medicine since 1965, succeeds the late Dr. Carl V. Moore who died in August. Dr. Moore had held the position since 1955.

Dr. Kipnis joined the Washington University medical faculty in 1955 to work with Nobel laureate Carl F. Cori, M.D., then professor and head of the Department of Biological Chemistry. He has served as director of Washington University's Clinical Research Center since 1960 and in August was named director of the new Lipids Research Center.

Recognized as an authority on endocrinology and diabetes, Dr. Kipnis won the American Diabetes Association's Lilly Award and the Endocrine Society's Ernst Oppenheimer Award in 1967, becoming the first to win both awards the same year. In September he delivered the British Diabetic Association's 23rd Banting Memorial Lecture at the University of Sussex. The program honored Sir Frederick G. Banting, the Canadian physician who discovered the hormone insulin and its use in treating diabetes.

Dr. Woodward to Speak As Probstein Professor

Edward R. Woodward, M.D., will present the annual J. G. Probstein Visiting Professor of Surgery lectures on March 23 and 24.

Dr. Woodward is professor and chairman of the Department of Surgery at the University of Florida School of Medicine, Gainesville, Florida.

He will speak on "The Pathophysiology and Treatment of Peptic Ulcer" at 4:30 p.m., Friday, March 23, and on "Reflux Peptic Esophagitis" at 8 a.m., Saturday, March 24. Both lectures will be presented in the Steinberg Amphitheater.

The Probstein Visiting Professorship was established by the Leonson Foundation in honor of J. G. Probstein, M.D., consultant in surgery at the Hospital and former Surgeon-in-Chief.

PSYCHOTHERAPY PROGRAM TO BEGIN THIRD SESSION

Applications are being accepted now for enrollment in the two-year Postgraduate Training Program in Psychotherapy sponsored by the Department of Psychiatry at Jewish Hospital. The program provides weekly seminars and supervision to help meet an increasing demand for skilled psychotherapists to practice and teach in community, institutional and private settings.

Applicants should be graduated from approved programs in medicine, psychology, social work or related fields and have at least one year of supervised psychotherapy experience beyond the formal program.

This will be the third group of therapists to enter the program at the Hospital and the new course will begin in September of 1973. Inquiries about admission to the program should be addressed to Dr. Norman J. Matulef at Jewish Hospital.

HOSPITAL SPONSORS ADULT EDUCATION

In August the Hospital's Department of Psychiatry and the St. Louis Public School System jointly began sponsoring an Adult Basic Education program which is offered at the Hospital. The program is for patients only. Any patients in the Hospital, including those outpatients who visit the Hospital for any kind of treatment, are eligible to take advantage of this opportunity.

The purpose of the program is to help each individual realize his particular goals, ranging from the basics, learning to write and do simple mathematics, to preparing for the General Educational Development Examination which is the high school equivalency test. Instruction is provided in English, math, social studies, science and literature.

Joan Kubie, special education teacher in the Department of Psychiatry, and Gloria Danielson, master teacher with the Adult Basic Education Department of the St. Louis Public Schools, work with each patient at his level and his own rate.

As of now three patients have graduated from the Hospital's program. Two have entered junior college and one graduate is planning to attend teacher's college.

In supporting the program the St. Louis Public Schools furnish a staff person and all necessary textbooks. They also provide on-going supervision of the program and will supply any needed in-service training, according to Mrs. Del Finley, coordinator of the Adult Education Program for the public schools. Classes are held from 1 to 3 p.m. each Monday, Wednesday and Friday in the Brith Room on the ground floor of the Hospital. Any patients who wish to enroll in this pilot education program or who would like further information may contact the Hospital, extension 571.

Associates Speaker's Bureau Presents Jewish Hospital "At Your Service"

As part of the Speaker's Bureau service of the Associates of the Hospital, a group representing various areas within the Hospital recently spoke to the sisterhood of Nusach Hari Bnai Zion sisterhood.

The Jewish Hospital "At Your Service" program offers the community the opportunity to hear candid remarks by Hospital professionals about their roles individually and as vital, integral parts in the total operation of the Hospital.

This type of speaker's format serves to educate the community on the significance of a teaching hospital which must be equipped with all available resources to ensure the most efficient and effective means of medical care.

The speaker's group included Mrs. Emily Lazarus, R.N., representing the nursing area; Elliot Levy M.D., resident in medicine; Rita Wicks, M.D., surgery intern; Dr. Robert Senior, director of the Hospital's pulmonary laboratory on the full-time staff; Dr. Ralph Graff, surgeon in private practice, and Mrs. Barbara Janes, Director of Community Relations and Development, representing administration.

Emily Lazarus, R.N., commented that the role of the nurse is changing, expanding. "Today a nurse is more of a doctor's co-worker, working side-by-side with him. Therefore, today's nurse must keep up with all the changes. Jewish Hospital maintains an excellent in-service organization which is an on-going teaching program. And the Hospital

encourages nurses to keep in touch by making it possible for them to further their educations through a tuition reimbursement program and graduate scholarships."

Dr. Robert Senior noted that the concept of a full-time available staff is relatively new and Jewish Hospital is one of the first to develop this. "As full-time physicians, we as a group are trained in special areas, spending all our time at the Hospital. We have an expert in every field whose sole interest is in that particular area. This way the patient has his own physician as well as one or more specialty experts in the background. My first role is as consultant for pulmonary problems; my second role is that of teacher. This way I am able to offer advice to students and house staff as well as private physicians. Full-time staff members remain in close contact with the medical school which enables them to keep up with the latest developments. That's one of the great attractions of being at Jewish Hospital."

"I have the choice of where to take my patients," said Dr. Ralph Graff. "We maintain full-time and private physicians because Jewish Hospital is part of a teaching medical center. I need and want these people taking care of my patients. I'd rather put my patients in a hospital like this. If I need expertise, I know it's there and I sleep better."

"As a resident in medicine," said Dr. Elliot Levy, "I have responsibilities to patients, to attending physicians, to interns and to medical students. My primary role is the supervision of a floor and every patient must be spoken to and examined. Daily meetings, which include residents, full-time physicians and private

doctors are held to discuss cases. The patient benefits from the combined knowledge of all. And, in emergencies, many patients become aware of the resident and thankful for him — a trained person available when needed. A resident's position is absolutely necessary to run a hospital equipped to deliver 1973 medical care."

Dr. Rita Wicks finds the surgical teams of surgeon, resident and intern most beneficial in her first year internship. "Jewish Hospital has a tradition of a staff interested and enthusiastic about teaching students," she said. She has also found the personal touch emphasized at the Hospital.

In response to a question about the number of Jewish Patients served by the Hospital, Mrs. Barbara Janes commented that 24 per cent of the patients are Jewish which represents some 55 per cent of the Jewish community requiring hospitalization during the year. "The important aspect to remember, however, is that Jewish Hospital is a symbol of Jewish tradition of care and concern for people of all races and creeds. By serving this tradition we render the most respectful service for the Jewish population of St. Louis," she emphasized.

A similar program was presented at a board meeting of the Associates of Jewish Hospital, and is available to organizations throughout the community through the Associates Speaker's Bureau.



Mrs. Lazarus, R.N.



Dr. Senior



Dr. Graff



Dr. Levy



Dr. Wicks

NURSING EXPLORER POST PROGRAM HELPS YOUTHS LOOK TO FUTURE



David A. Gee, executive vice president, congratulates Mrs. Sue Wallach, R.N., sixth floor assistant head nurse who through quick thinking and fast action rescued a patient recently. The patient had accidentally caught himself on fire from a cigarette, and Mrs. Wallach found the patient's bed linens and pajama bottoms in flames. She pulled the burning bedding to the floor and to put out the pajamas used her right hand which was burned in the process. Less than two per cent of the patient's body was burned due to Mrs. Wallach's clam and spontaneous reaction in an emergency.

Editor's Note: Mrs. Henry L. Ettman was mistakenly identified in the last issue of 216 as she appeared in a photograph with Alex C. Sonnenwirth, Ph.D., director, division of microbiology, and Mrs. Genyth De Salvo, the Henry L. Ettman Award recipient for 1972.



A Nursing Explorer Post for young people 15 to 21 interested in nursing and health service careers is currently being sponsored at Jewish Hospital.

The Explorers is a co-educational group of the Boy Scouts of America. They meet at the Hospital twice a month where they are exposed to various nursing skills. To date they have learned such procedures as taking blood pressure, temperature, respiration and pulse, charting, preparing patients for meals, passing fresh drinking water and visiting with patients who require long term care. In addition they must give four hours of service per member at the Hospital.

The 24 participants in Explorer Post 9020 began the project in October and recently received their charter and pins. The group represents Kirkwood, University City, Webster Groves, Ladue,

Maplewood and Soldan high schools.

Explorer Posts are being launched all over in popular fields of interest as indicated by surveys taken in the schools. At Jewish Hospital these young people are getting real exposure to the field of nursing and a good idea of just what a nursing career means.

Mrs. Mabel Howell, associate executive director of the Hospital, is the Institutional Representative. Mrs. Brenda Ernst, R.N., Director of Nursing Service, is consultant, replacing Miss Margaret Loh, who has left the Hospital. Mrs. Mattie Pleasant, R.N., acts as administrative advisor, while Mrs. Margaret Phillips, R.N., and Joe Battle, administrative assistant in nursing, are associate advisors. Miss Marguerite Odell, Director of Volunteer Services, is committee chairman.

Vasectomy Clinic Recently Opened

A Vasectomy Clinic was opened January 3 at the Hospital under the direction of Dr. Charles B. Manley, Chief of the Division of Urology. This was previously the Washington University Vasectomy Clinic which Dr. Manley started in March, 1971.

A vasectomy is a form of permanent surgical contraception in the male. It's a relatively minor operation performed as outpatient surgery under a local anesthetic. An essentially painless operation, the vasectomy is completed in about 20 minutes.

The Hospital's Vasectomy Clinic is held every Wednesday. From 12 to 15 vasectomies are performed during this time.

The initial visit to the Vasectomy Clinic is for an interview by experienced medical social workers. The actual vasectomies are done on the second visit by private practicing, fully trained urologists who work for the Clinic.

The Vasectomy Clinic service is available to all people of any income. The fee is based on a sliding scale according to income and number of children.

Since the Clinic was opened in 1971, over 600 vasectomies have been performed. At the time it was one of approximately three such clinics in teaching medical centers in the country. The first Vasectomy Clinic in the United States was opened in October, 1969, in New York.

For further information about the Vasectomy Clinic call Jewish Hospital, Division of Urology, 367-8060, Extension 552.

MINOR SURGERY ON OUTPATIENT BASIS REDUCES COST, NEED FOR HOSPITALIZATION

Minor surgery on an outpatient basis is not new to The Jewish Hospital. It's been going on since 1956 with the use of local anesthetics. As of last summer, general anesthetic outpatient surgery was added as more and more physicians feel this is the solution to minor operations which shouldn't require unnecessary hospitalization.

The one-day surgery plan is designed to offer quality surgical care services to patients who the physician feels require less than a day's hospitalization. The plan seems to be the answer to those surgical procedures which are too demanding to be performed in a physician's office, but which are not serious enough to require several days' hospitalization.

As well as reducing the patient's length of stay, outpatient surgery also reduces the cost to the patient. No room and board fees are charged at Jewish Hospital for outpatient surgery. In addition this type of surgical care is covered by Blue Cross and most other major insurance companies.

At Jewish Hospital outpatient surgery involves checking into the Ambulatory Care Center one half hour before scheduled surgery. Locker facilities are available in the recovery room for outpatients undergoing general anesthesia and within the Operating Room Suite for patients receiving local anesthesia. Relatives may wait in the surgery waiting room on the second floor where coffee is served by a hostess.

Minor outpatient surgery includes such procedures as plastic surgery, principally on the skin; urological surgery such as cystoscopies, vasectomies and circumcisions; gynecological surgery such as diagnostic D & C's; minor eye, ear, nose and throat surgery, and dental surgery. The Hospital does offer

post-anesthesia recovery room care for general anesthetic cases.

In 1972 outpatient surgery cases totalled over 1450. This plan is proving to be a better way for all concerned—the patient, the physician, and the Hospital which can better use the unoccupied beds for other, more acute types of care.

CALENDAR OF EVENTS

Doctors' Day 1973 has been scheduled for Thursday, March 29, in the MAC room at the Hospital. This is the day the Board of Directors, the Auxiliary and the Associates join together to express appreciation to the entire medical staff for their invaluable services to the Hospital and the community. All three groups sponsor the annual recognition and have planned a reception to be held in the MAC room where the physicians will be honored from 5 to 7 p.m.

The Associates annual dinner meeting will be held Wednesday, April 11. Featured speaker Dr. Marcy Goldstein will relate his studies in the area of Acupuncture.

All Hospital departments have been invited to participate in an Employee Health Fair, Tuesday, February 27, in the MAC room. Each participant will occupy a booth with equipment and displays to demonstrate departmental functions within the Hospital.

The Auxiliary Spring Meeting will be held Friday, April 27, at Meadowbrook Country Club. This year's theme is "In One Year and Out the Other".

DR. STEINBERG TOURS RUSSIA

Following the International Congress of Gerontology Convention in Kiev in July, Dr. and Mrs. Franz U. Steinberg took a post-convention tour organized by In-Tourist, the Russian Government Travel Office, which took them to Riga, Tallinn, Leningrad and Moscow. They were provided a good insight into the practice of medicine in Russia. Dr. Steinberg, Director of the Department of Rehabilitation Medicine at Jewish Hospital, gives the following observations.

"In Kiev we visited an outpatient clinic, government-owned of course, which serves a population of about 50,000 in the immediate surrounding area," says Dr. Steinberg. The clinic is open 12 hours a day and is staffed with 115 physicians. Approximately 2,400 patients are seen in the 12-hour period. Physicians work seven hours a day spending half that time on house visits in their particular districts. Every person in the area must come in for a physical check-up once a year, twice a year for women. Check-ups are compulsory and some sort of police action is taken if this is not taken care of.

"All medical specialties are represented in the clinic, including a Department of Acupuncture. Seventy-five per cent of all physicians are women. Their pay is quite low and while no official figures were given, it appears they make approximately 240 rubels a month, about \$300.

"Associated with the clinic is a 500-bed hospital which we were not invited to visit. The various hospitals serve as emergency facilities during the hours that the clinic is closed.

"One has the impression that the distribution of medical care is good and efficient but it is difficult to judge the quality of the care. The physician training takes seven years after high school graduation. Outstanding students continue in an academic career while others are assigned to various medical facilities throughout the country."

The Steinbergs visited two homes for the aged in Kiev and Leningrad and in



Dr. Steinberg photographed this housing project, which seems to extend for miles, while touring Kiev.



A coin operated water fountain is available to all. The community glass must be replaced after use. To the right is the marble entrance to a subway.

both places were shown only the areas which housed the well elderly. "There is apparently no shortage of physicians. The home in Kiev with 380 patients employed 13 full-time physicians. There is considerable emphasis on recreational activities and apparently a sincere and successful attempt is made to keep the residents occupied. All services are free to the residents except that 50 per cent of their old age pension goes to the home, about \$150 per month.

"Within each city we were able to move around freely on our own. Travel

plans, however, were set up in advance and there was no possibility of deviating from them. Such visits to hospitals, homes and institutions cannot be arranged on the spur of the moment.

"For the Russians, life in Russia apparently has improved a great deal during the last 50 years. Consumer goods, however, are still scarce and clothing, shoes, etc., are quite expensive. No Western newspapers are available and for our two and a half weeks in Russia, we were rather uninformed about what was going on in the world."

RECENT GIFTS RECOGNIZED

The Ira and Herbert Simon Research Fund recently received generous annual gifts totaling \$41,000 from members of the Simon family—Mr. Julian Simon, Mrs. Herbert Simon and Mrs. Ira Simon. The fund, one of the largest research endowments at the Hospital, is used to support investigations in medicine and surgery.

In addition to the research gifts, Mr. Simon made a gift to the Department of Psychiatry to purchase a video tape deck for use in the patient therapy and educational programs.

The Max Myer, M.D., Fund for Surgical Education has been established as a permanent endowment through the generosity of Mr. and Mrs. Leo A. Drey and Mrs. Max Myer. Income from the fund will be used to support an annual educational conference in Dr. Myer's name. Dr. Myer was Director of the Department of Surgery from 1931-1946.

Two Unrestricted Endowments were established at the Hospital in December. The Schneider Unrestricted Endowment Fund was made possible by a gift from Harry, Gene and Murray Schneider, New Market Hardware Company and Ace Construction and Engineering Company.

The Mary Ann and Elliot Stein Unrestricted Endowment Fund was established with a gift from Mr. and Mrs. Elliot Stein. Unrestricted Endowments are essential in providing the canopy of support for various research and educational programs which cannot be funded through other outside sources.

Mr. and Mrs. Roswell Messing Jr. made a special gift to the Hospital's Department of Otolaryngology to establish an Otolaryngology Fund in their name. The fund is to be used at the discretion of Dr. Ben Senturia.

Dr. and Mrs. Leon Fox made a gift to the Jeffrey Charles Fox Memorial Book Fund. The fund is used to purchase medical books for the Department of Surgery House Staff Library.

The newly established Renal Research Fund, under the Direction of Dr. Herbert Lubowitz, received year-end support from Mr. and Mrs. Theodore Birke and Mallinckrodt Chemical Works. These gifts and any additional funds received will be used to support investigative activities in renal disease. Dr. Lubowitz is director of the Hospital's Division of Nephrology and conducts the activities of the kidney dialysis and renal intensive care units.

Urgently needed patient care equipment has been made available through the Louis and Sarah Sachs Fund which was established at the Hospital by Mr. Sam C. Sachs. These include a \$2,500 Hypothermia Blanket, an item which reduces body temperature and which is used routinely on all patients undergoing cardiac surgery or those with body temperature of 103 degrees or more. Also purchased was an Emerson Plural Suction Machine (\$250), a life saving unit which is used on every heart surgery patient and those with serious chest injuries and two Aqua-K Pads costing \$150 each. These self-contained heated water devices elevate the body temperature for specific medical treatments.

Mr. Henry H. Stern made a generous year-end gift to the Evelyn B. Stern Nursing Scholarship which was established in 1970 in memory of his wife. This undergraduate fund is used to provide assistance to students in the School of Nursing.

Mr. Charles A. Rich and family made a generous donation in memory of the late Samuel Rich. The gift has been designated for the William and Jerome Molasky Memorial Heart Fund which was established at the Hospital in 1965 by members of the Molasky family.

Mr. and Mrs. Irvin Bettman Jr. made a gift to the Sidney I. Rothschild Medical Library Fund which was established in memory of Mrs. Bettman's father. The gift will be used to purchase current books and periodicals for the library.

Dr. Louis V. Avioli, Shoenberg Professor of Medicine and Director of the Hospital's Division of Metabolism and Endocrinology, received a grant from the J. Herndon and Lida Wallace Smith Fund. The gift has been designated to support Dr. Avioli's research activities at Jewish Hospital and Washington University School of Medicine.

Books recently given to the Sidney I. Rothschild Medical Library include: **Clinical Scalar Electrocardiography**, Lipman, Massie & Kleiger, donated by Dr. Robert Kleiger; four volumes of **Clinical Dermatology**, Demis, Crouse, Dobson & McQuire, donated by Alex C. Sonnenwirth, Ph.D., who is the author of one chapter, and **Practical Automation for the Clinical Laboratory**, White, Erickson & Stevens, donated by Dr. Sue Stevens.

Hospital Wins Development Award

Mrs. Barbara Janes, Director of Development and Community Relations, accepted the Bronze Award of Excellence from the National Association for Hospital Development at the annual conference held in Kansas City. The award recognized outstanding achievement for a Hospital Special Projects Program—the May 1972 Cornerstone Dedication Ceremony for the new nine-story patient care pavilion. In 1971, Mrs. Janes received the Harold J. Seymour National Honors Award in recognition of the activities connected with the Hospital's \$21.5 million Expansion Program for Excellence in Health Care.

In Memoriam . . .

Colleagues mourned the death of Dr. Joseph Magidson who practiced medicine in St. Louis for 26 years. Dr. Magidson, who was on staff at Jewish Hospital, died November 18, at age 74.

Contributions to Jewish Hospital Funds

CONTRIBUTIONS RECEIVED ARE USED FOR RESEARCH, APPLIANCES FOR CLINIC PATIENTS, NEW EQUIPMENT, AND OTHER WORTHY UNDERTAKINGS, SPONSORED BY THE JEWISH HOSPITAL AUXILIARY.

THE FOLLOWING MEMORIAL AND HONORIAL CONTRIBUTIONS WERE RECEIVED AFTER OCTOBER 15, TO DECEMBER 15, 1972. ANY CONTRIBUTIONS RECEIVED AFTER DECEMBER 15, 1972, WILL BE LISTED IN THE NEXT 216.

CONTRIBUTIONS TO THIS FUND MAY BE MADE BY SENDING CHECKS, PAYABLE TO THE JEWISH HOSPITAL TRIBUTE FUND, c/o MRS. A. ERNEST STEIN, MRS. HARRY W. LOEB, 216 SOUTH KINGSHIGHWAY, ST. LOUIS, MISSOURI 63110.

Gifts in Memory

DONOR IN MEMORY OF

Mr. and Mrs. Leo Aberson
ADELINE ACKERMAN
Mr. and Mrs. Lawton Levy
Mr. and Mrs. Paul B. Steinberg
(Milton Price Fund)
ROSALIND B. APPLE
Mrs. Lilly Ann Abraham
Dr. and Mrs. Harry Agress
Mrs. Albert Aloe
(Prevention of Blindness Fund)
Mr. and Mrs. Ernest Auerbacher
Mrs. Arthur B. Baer
Mr. and Mrs. F. Bert Baer
(Mr. and Mrs. F. Bert Baer Fund)
Mr. and Mrs. Howard F. Baer
Mrs. Sidney Baer
Mr. and Mrs. Morton B. Bearman
(Prevention of Blindness Fund)
Mr. and Mrs. Irvin Bettman, Jr.
Mr. and Mrs. M. Erwin Bry, Jr.
(Lisa Bry-James Dreyer Fund)
Mrs. Julian B. Cohn
Mr. and Mrs. Lee Deacon
(Lisa Bry-James Dreyer Fund)
Mr. and Mrs. Jack Desbecker
Dr. and Mrs. Fred Fabric
(Research Fund)
Mr. and Mrs. Sam Falk
(Prevention of Blindness Fund)
Mrs. Moyer S. Fleisher
(Prevention of Blindness Fund)
Mr. and Mrs. Joseph Floret
Miss Genevieve Fogarty
(Prevention of Blindness Fund)
Mr. and Mrs. Harry L. Franc, Jr.
(Edna E. Peterson Fund)
Mr. and Mrs. Fred J. Frank
Mrs. Milton Frank
(Milton Frank Fund)
Mrs. Raymond Freed
Mr. and Mrs. Morris Glaser
Mrs. Lawrence E. Goldman
Mr. and Mrs. Edward Greensfelder
Mr. and Mrs. Maurice Handelsman
Mr. and Mrs. Richard Hellman
(Dr. Llewellyn Sale, Sr., Fund)
Miss Rita Krallman
(Prevention of Blindness Fund)
Mr. and Mrs. Gus Kurie
Mr. and Mrs. Ira M. Lang
Mr. and Mrs. Sam Langsdorf
Mrs. Fred S. Lederman
Mr. and Mrs. Stanley Lentin
Mrs. Marjorie Frank Lesser
Mr. and Mrs. Edwin Levis
(Prevention of Blindness Fund)
Mr. and Mrs. Edwin Levis, Jr.
Mr. and Mrs. Fredrick Levis
Mr. and Mrs. John Levy
(Josal Fund)
Mr. and Mrs. Lawton Levy

DONOR IN MEMORY OF

ROSALIND B. APPLE
Mr. and Mrs. Willard L. Levy
Mr. and Mrs. Bart Lieberman
(Bernard Lieberman Fund)
Mrs. Ben M. Loeb
(Benjamin M. Loeb Fund)
Mr. and Mrs. Irving Londy
(Mabel and Simon M. Frank Fund)
Mrs. Ralph Lowenbaum
Mr. and Mrs. Robert H. Mayer
(Prevention of Blindness Fund)
Mr. and Mrs. Bernard Mellitz
Mrs. Norma S. Mendle
Mrs. Roswell Messing
Mr. and Mrs. Morton Meyer
(Prevention of Blindness Fund)
Mrs. Isadore Carl Middleman
(The "Middy" Fund)
Mr. and Mrs. Charles W. Mintz
(Prevention of Blindness Fund)
Mr. and Mrs. Alvin S. Novack
(Edna Malen Scholarship Fund)
Mr. and Mrs. Paul E. Peltason
Mr. and Mrs. Elvin K. Popper
Mr. and Mrs. Louis R. Putzel
(Helen and Henry Putzel Fund)
Mr. and Mrs. Phillip Rashbaum
(Mabel and Simon M. Frank Fund)
Mrs. Henry Rice
Dr. and Mrs. Harry Rosenbaum
Mrs. Erma Rosenberger
Mrs. Louis G. Rothschild
Mr. and Mrs. Simon Rubenstein
Mrs. Wilton Rubinstein
Mr. and Mrs. Joseph F. Ruwitch
(Elizabeth and Joseph Ruwitch Fund)
Mr. and Mrs. Samuel C. Sachs
(Louis and Sarah Sachs Fund)
Mrs. Frank Sale
(Dr. Llewellyn Sale, Sr., Fund)
Mr. and Mrs. Eli Sandperl
(Emil Tamm Fund)
Mrs. Harry Sandperl
(Emil Tamm Fund)
Mr. and Mrs. Henry Scherck
(Gordon and Marjorie Scherck Fund)
Mr. and Mrs. James L. Schwab, Jr.
Mr. and Mrs. Roger Schwab
Mr. and Mrs. J. Henry Schweich
(Prevention of Blindness Fund)
Dr. and Mrs. Ben Senturia
Mr. Sydney M. Shoenberg, Sr.
Mr. and Mrs. Sydney M. Shoenberg, Jr.
Mr. and Mrs. Richard Shoninger
Mr. and Mrs. John E. Simon
(Prevention of Blindness Fund)
Mrs. Bertha S. Singer
Dr. and Mrs. Samuel D. Soule
(Dr. Samuel D. Soule Fund)
Mr. and Mrs. A. Ernest Stein
Mrs. Louis Stein
Mr. and Mrs. Alfred F. Steiner
Mr. Henry H. Stern
(Evelyn B. Stern Fund)

DONOR IN MEMORY OF

ROSALIND B. APPLE
Mr. Walter G. Stern
(Evelyn B. Stern Fund)
Mrs. Emil Tamm
(Emil Tamm Fund)
Mrs. Harry Tenenbaum
(Harry Tenenbaum Fund)
Mr. and Mrs. Milton Tucker
Mr. and Mrs. Percy Tucker
Mr. and Mrs. Millard Waldheim
Mr. and Mrs. Robert Wegusen
Mr. and Mrs. Robert S. Weinstock
(Leo C. Fuller Fund)
Mrs. David P. Wohl
(Max Myer, M.D., Fund)
Mrs. Walter Wolff
(Helen and Walter V. Wolff Fund)
Mr. and Mrs. Charles Yalem
MORRIS ARKIN
Mr. and Mrs. Russell J. Novoson
(Irven Dubinsky Fund)
Mr. and Mrs. Burton Remis
AL BAIENSON
Mr. and Mrs. Solon Gershman
(Sadye Mathes Fund)
Mr. and Mrs. Jerome Scissors
(Surgical Intensive Care Unit Fund)
Dr. and Mrs. Samuel D. Soule
(Dr. Samuel D. Soule Fund)
SAM BARBARASH
Mr. and Mrs. A. G. Bertagnoli
Mr. and Mrs. Don Gardner
Mr. and Mrs. Francis F. Giles
Mr. and Mrs. Herman Gold
(Carol Kaufman Fund)
Mr. and Mrs. W. W. Scott
Mr. and Mrs. D. J. Spring
Employees of USAMICOM
Mr. and Mrs. Thomas H. Williams
HYMAN BERGER
Mr. and Mrs. Sidney M. Frager
Mr. and Mrs. Ted Smith
MINA BERGER
Mrs. Albert Arndt
Mr. and Mrs. Jerry Hirsch
SAM BICKOFF
DAVE BISTROW
Mrs. Pearl Balk
Mr. and Mrs. Meyer Levy
FAY BLEIWEISS
Dr. and Mrs. Phillip E. Korenblat
Mr. and Mrs. Harry Laba
Mrs. Lillie H. Loebner
JULIUS M. BLOCK
Miss Dorothee Block
LOUIS BLUMENFELD
Ridenhour, Hylton and Company
Mrs. Louis White
ERIC R. BRILLIANT
Mr. and Mrs. Stanley Cohen
(Fannie and Meyer Cohen Fund)
Mr. and Mrs. Bernard Gerchen
Mr. and Mrs. Milton Goldberg
Mr. and Mrs. Morris Huber
(Edna E. Peterson Fund)
Mr. Andy Voda
Miss Cindy Voda
JENNIE BRINDIS
Mr. and Mrs. Bud Lowy

SPECIAL GIFT BOX

**October 15 through December 31, 1972
IN MEMORY**

Mrs. Mildred Minkin and Sam Rich
Molasky Family
(William and Jerome Molasky
Memorial Fund)

Jack Mintz
Employees of the Captain Post Company
(Dorothy P. Jasper Memorial Fund)

**Birthdays of Louis M. Monheimer
and Clara K. London**
Mrs. Louise M. Aronberg
(Jacob G. Probststein Visiting
Professorship of Surgery Fund)

Dr. Max W. Myer
Mrs. Harry W. Asher, Jr.
(Max W. Myer, M.D. Memorial Fund
for Surgical Research)

Mrs. Evelyn B. Stern
Mr. Henry H. Stern
(Evelyn B. Stern Fund)

IN HONOR

Birthday of Mrs. Iris Meyerhardt
Mrs. Iris Meyerhardt
(Milton H. Meyerhardt Memorial Fund)

**Happy Holidays to
Dr. Jacob G. Probststein**
Mrs. Louise M. Aronberg
(Jacob G. Probststein Visiting
Professorship of Surgery Fund)

Dr. Harry Rosenbaum
Dr. and Mrs. Milton L. Braun
(Ophthalmology Fund)

Marriage of Mr. and Mrs. Sam C. Sachs
The Cohen Family and
Glasco Electric Company
(Tribute Fund)

Holiday Greetings to Mrs. Laura Simon
Mrs. Mildred B. Simon
Mr. Julian Simon
(Ira and Herbert Simon Research Fund)

DONATIONS

The Brand Foundation
(Oscar Brand Memorial Fund)
Hospital Saturday & Sunday Association
Endowment Fund Trust

Mrs. Esther Kreisman
(Surgical Research Fund)

Dr. Edward Massie
(Department of Medicine)

Mr. Jesse S. Myer, Jr.
(Max W. Myer, M.D. Memorial Fund
for Surgical Education)

Mr. Robert M. Ross
(Bernie A. Ross Cardiovascular
Research Endowment Fund)

Mr. Louis D. Victor
(Department of Ophthalmology)

EQUIPMENT DONATIONS

Department of Physical Therapy
Mr. Albert Arky
Mrs. Carol Brooks
Dr. Grover Liese

DONOR

Mr. and Mrs. Melvin Caplan
(H. Lister Tuholske Fund)

Mr. and Mrs. Al Allen
Mr. and Mrs. Irv Bogart
Mrs. Sidney Dawidoff
(Bernard Lieberman Fund)
Mr. and Mrs. Eli P. Flusser
(Edna Malen Scholarship Fund)
Dr. and Mrs. William A. Marmor
Mr. and Mrs. Saul Rubin

Mr. and Mrs. Hubert Moog
Mrs. Bernie A. Ross
Mr. and Mrs. Robert Ross
Mr. and Mrs. David Shores

Mr. and Mrs. Mike Kralik
(Heart Research Fund)
ANNA MAE "PINK" BURACK
Mr. and Mrs. Semon Frelich
DAUGHTER OF NEAL BURKE

Mr. and Mrs. David Shores
(Bernie A. Ross Fund)

Mrs. M. O. Birk
(Harry Tenenbaum Fund)

Ms. Radine C. Levy
(Milton H. Meyerhardt Fund)

Ms. Radine C. Levy
(Milton H. Meyerhardt Fund)

Mrs. Eva Brown
(Cancer Research Fund)
Mrs. Sam Eastman

Mr. and Mrs. Thomas Berger
Miss Sarah Cohen
(Julius and Dena Cohen Fund)

Mr. and Mrs. R. P. Cohn
Mr. and Mrs. Morris M. Horwitz
Mr. and Mrs. Jason Kawin
Mr. and Mrs. Louis A. Montell
(William and Jerome Molasky Fund)

Mr. and Mrs. Louis Tiger
Ms. Lillian Tucker

Mr. and Mrs. Robert Abrams
(Dr. Leon Foster Fund)
Ms. Florence Baskowitz
Mr. and Mrs. Robert Bernstein
(William and Jerome Molasky Fund)

Mrs. Max Cornick
(Edna Malen Scholarship Fund)

Dr. and Mrs. Norman Drey
Mr. and Mrs. Al Fishel
Mr. and Mrs. Sheldon Fisher
Mr. and Mrs. Sidney Freund
Mr. and Mrs. Courtney Gould
Mr. and Mrs. Philip N. Hirsch
Dr. and Mrs. Milton Jasper
(Dorothy P. Jasper Fund)

Mrs. Sally Kushins
Mr. and Mrs. Ellis C. Littmann
Mr. and Mrs. Bernard Mellitz
Mr. and Mrs. Harry Mendelson
Mrs. Edward Moskow
Mr. and Mrs. Gil Seidel
Mr. and Mrs. Elliot Stein

Dr. and Mrs. Ralph J. Graff
Dr. and Mrs. Phillip E. Korenblat
Mr. and Mrs. Bart Lieberman
Mr. Richard Meyerhardt
(Milton H. Meyerhardt Fund)

Mr. and Mrs. Carl Pass
Mrs. Irving Perlmutter
Mrs. Ina Steinberg

Ms. Sharon Christopher

Mrs. Carl M. Dubinsky
(Irven Dubinsky Fund)

Mrs. Sally Gottlieb

Mr. and Mrs. Max Polishuk

IN MEMORY OF

HARRY BRODSKY

BECKY BRODY

FATHER OF
DR. C. H. BROWN
(Bernie A. Ross Fund)

LENNIE BROWN

LESLIE CARVALHO

LOUIS CASTER

SAMUEL A. CASTER

EDWARD G. COGAN

BEN COHEN

SOL CRUVANT

SARA S. DEUTSCH

MARVIN DEUTSCH

CARL M. DUBINSKY

LOUIS DUBINSKY

FRIEDA R. EDWARDS

DONOR

Mr. and Mrs. Lester Ackerman
Mrs. Albert Aloe
Mrs. Frederic A. Arnstein
(Emil Nathan Fund)

Mrs. Harold M. Baer
Mr. and Mrs. Howard F. Baer
Mr. and Mrs. Irvin Bettman, Jr.
Mr. and Mrs. Arthur Bierman
Mr. and Mrs. Norman Bierman
Mrs. Frank Blotky
Mr. and Mrs. Henry Bry
Mr. and Mrs. M. Erwin Bry, Jr.
(Lisa Bry-James Dreyer Fund)

Mr. and Mrs. Richman Bry
(Lisa Bry-James Dreyer Fund)

Miss Leah Chackes
Mrs. Julian B. Cohn
Mr. and Mrs. Harry A. Collinger
Mr. and Mrs. Donald Cornbleet

Mr. and Mrs. Jack Desbecker
Mr. and Mrs. Stanley W. Dreyer
Mr. and Mrs. Harry Esserman

Mrs. Moyer S. Fleisher
Mr. and Mrs. Joseph Floret
Mr. and Mrs. Harry L. Franc, Jr.
(Edna E. Peterson Fund)

Mr. and Mrs. Fred J. Frank
Mr. and Mrs. Herbert Frank
Mr. and Mrs. John M. Friedman

Mrs. Katherine H. Friend
Mr. and Mrs. David A. Gee
Mrs. Clifford Glaser

Mr. and Mrs. Joseph Glaser, Jr.
Mrs. Lawrence E. Goldman

Mrs. J. L. Gordon
Mr. and Mrs. Edward Greensfelder
Mrs. G. L. Harris

Mr. and Mrs. Harold H. Hines, Jr.
Mr. and Mrs. Peter H. Husch
Mr. and Mrs. John A. Isaacs, Jr.

(Eleanor and John Isaacs, II Fund)
Mr. and Mrs. John A. Isaacs, III
(Eleanor and John Isaacs, II Fund)

Mrs. J. A. Jacobs
Mr. and Mrs. Edwin L. Kahner

Mr. and Mrs. I. M. Kay
Mr. and Mrs. Sigmund W. Kunstadter

Mrs. Irvin S. Lang
Mr. Burt B. Lasko

Mr. and Mrs. Harry Lesser, Jr.
Mrs. Marjorie Frank Lesser

Mr. and Mrs. J. Melvin Levi
Mr. and Mrs. Edwin Levis

Mr. and Mrs. Edwin Levis, Jr.
Mr. and Mrs. Fredrick Levis

Mr. and Mrs. John Levy
(Josal Fund)

Mr. and Mrs. Lawton Levy
Mr. and Mrs. Willard L. Levy
Mr. and Mrs. Al Loeb

(Benjamin M. Loeb Fund)
Mrs. Ben M. Loeb
(Benjamin M. Loeb Fund)

Mr. and Mrs. Harry W. Loeb
(Benjamin M. Loeb Fund)

Mr. and Mrs. Steve Loeb
(Benjamin M. Loeb Fund)

Mrs. Ralph Lowenbaum
(Benjamin M. Loeb Fund)

Mr. and Mrs. Ralph Lowenbaum, III
(Lisa Bry-James Dreyer Fund)

Mr. and Mrs. Donald H. Ludwig
Mr. and Mrs. Barry Mandel
Mr. and Mrs. Kenneth Marshall

(Lisa Bry-James Dreyer Fund)
Mr. and Mrs. Robert H. Mayer
Mrs. Norma S. Mendle

Mr. and Mrs. Morton Meyer
(Dr. Llewellyn Sale, Sr., Fund)
Mr. and Mrs. Morton L. Meyer
(Edna E. Peterson Fund)

DONOR

IN MEMORY OF

JULIA S. EINSTEIN

Mrs. Sol B. Meyer, Jr.
(Heart Research Fund)
Mr. and Mrs. Frederic Pick
Mr. and Mrs. Louis R. Putzel
(Helen and Henry Putzel Fund)
Mr. and Mrs. Charles S. Rice
(Harry Tenenbaum Fund)
Dr. and Mrs. Harry Rosenbaum
Mr. and Mrs. Robert Rosenheim
Mr. and Mrs. John Rothschild
Mrs. Louis G. Rothschild
Mr. and Mrs. Louis S. Rothschild
(Lewis Bettman Fund)
Mr. and Mrs. Saul L. Rubin
Mrs. Wilton Rubinstein
Dr. and Mrs. Myron E. Rubnitz
Mr. and Mrs. Joseph F. Ruwitch
(Elizabeth and Joseph Ruwitch Fund)
Mr. and Mrs. Samuel C. Sachs
(Louis and Sarah Sachs Fund)
Mrs. Frank Sale
(Dr. Llewellyn Sale, Sr., Fund)
Mr. and Mrs. Edward R. Samuels
Mrs. Theodore R. Samuels
Mrs. Harry Sandperl
(Emil Tamm Fund)
Mrs. Gordon Scherck
(Gordon and Marjorie Scherck Fund)
Mr. and Mrs. Gordon Scherck, Jr.
(Gordon and Marjorie Scherck Fund)
Mr. and Mrs. Henry Scherck
(Gordon and Marjorie Scherck Fund)
Mr. and Mrs. J. Leonard Schermer
Mrs. William H. Schield
Mr. and Mrs. William H. Schield, Jr.
Mr. and Mrs. Herbert Schiele
Mr. and Mrs. Edward F. Schweich
(William H. Schweich Fund)
Mrs. Herman C. Seldin
Dr. and Mrs. Ben H. Senturia
Mr. and Mrs. John M. Shoenberg
Miss Orley Shoninger
Mr. and Mrs. Richard A. Shoninger
Mr. and Mrs. John E. Simon
(John E. Simon Fund)
Mr. and Mrs. James W. Singer, Jr.
Mr. and Mrs. David R. Smith
Dr. and Mrs. Samuel D. Soule
Mr. and Mrs. Frank K. Spinner
Mr. and Mrs. A. Ernest Stein
Mr. and Mrs. Charles J. Steiner
(Evelyn B. Stern Fund)
Mr. and Mrs. Lawrence Steiner
Mr. Henry H. Stern
(Evelyn B. Stern Fund)
Mr. and Mrs. Lawrence H. Stern
Mrs. Emil Tamm
(Emil Tamm Fund)
Mrs. Harry Tenenbaum
(Harry Tenenbaum Fund)
Mr. and Mrs. Louis Tiger
Mr. and Mrs. Harold Tober
(Marguerite Tober Fund)
Mr. and Mrs. Milton H. Tucker
Mr. Richard Turner
Mr. and Mrs. Millard Waldheim
Mr. and Mrs. Robert Watel
Mr. and Mrs. Richard K. Weil
Mr. and Mrs. Herman Willer
Mrs. David P. Wohl
Mrs. Norman Wolff
Mr. and Mrs. Norman C. Wolff, Jr.
RAYMOND C. ELLIS
Mr. David A. Gee
OSCAR EPSTEIN
Mr. Donald Levy
DR. LAWRENCE P. FEIGENBAUM
Mr. and Mrs. Theodore Hoffman
Mr. and Mrs. Donald Ross
(Edna Malen Scholarship Fund)
Dr. and Mrs. Leonard Wiedershine

DONOR

IN MEMORY OF

ABE FERER

Mrs. Jacob N. Sapin
J. EMERT FITZGIBBON
Mr. and Mrs. Isadore Pass
DR. LEON FOSTER
Mr. and Mrs. Lawrence Hollander and Robert
(Dr. Leon Foster Fund)
HARRY FREDLICH
Mr. and Mrs. Isadore Rothman
Mr. and Mrs. Robert Schwartz and Michael
EUGENE A. FREUND
Mrs. Joseph M. Arndt
Dr. and Mrs. William Berman
Mr. and Mrs. Leonard Cohn
(Eugene Freund Renal Fund)
Mr. and Mrs. Alvin Goldfarb
Mr. and Mrs. Morris M. Horwitz
Mr. and Mrs. James Ingham
(Renal Division)
Mr. and Mrs. Elvin K. Popper
Mr. and Mrs. Sidney E. Rubin
(Eugene Freund Renal Fund)
Dr. and Mrs. Llewellyn Sale, Jr.
(Dr. Llewellyn Sale, Sr., Fund)
Mr. and Mrs. Paul Tucker
Mr. and Mrs. Robert S. Weinstock
(Leo C. Fuller Fund)
Mr. and Mrs. Jay V. Zimmerman
SAMUEL FRIEDMAN
Mr. and Mrs. Ivan A. Cohn
Mr. and Mrs. Burt Karney
ISIDORE FRUMER
Mr. and Mrs. Albert L. Goodman
Mr. and Mrs. Stanley Lentin
BERNARD E. GARRISON
Mr. and Mrs. R. P. Cohn
Mr. and Mrs. Milton Frenkel
Mr. and Mrs. David A. Koplar
(Harold M. Zager Fund)
Mr. and Mrs. Abe Lieberman
(Bernard Lieberman Fund)
Mr. and Mrs. Harry Lieberman
(Bernard Lieberman Fund)
Mr. and Mrs. Carl Pass
LIBBY GERSTEIN
Mr. and Mrs. Ben Ellis
CHARLES GIANINO
Mr. David A. Gee
Mr. and Mrs. Milton L. Rathert
(Rose Hoffman Fund)
Ms. Helen Wohlert
(Edna E. Peterson Fund)
BERNARD GLASER
Mr. and Mrs. Leo Aberson
MORRIS GLASER
Mr. and Mrs. Richard Baizer
Mr. and Mrs. Morton D. Baron
Mr. and Mrs. Richard Bennett
(Sam and Jeannette Koplar Fund)
Dr. and Mrs. Morton Binder
Mr. and Mrs. Robert L. Byers
Mr. and Mrs. J. B. Charak
Mr. and Mrs. Donald Cornbleet
Mr. and Mrs. Howard Cohen
(Fannie and Meyer Cohen Fund)
Mr. and Mrs. Stanley Cohen
(Fannie and Meyer Cohen Fund)
Mr. and Mrs. Ray L. Crowley
Mrs. Irven Dubinsky
(Irven Dubinsky Fund)
Mrs. Sam Eastman
Dr. and Mrs. Fred Fabric
(Research Fund)
Mr. and Mrs. Sheldon Fisher
Mr. and Mrs. Alfred Fleischer
Mr. and Mrs. Adolph Frank
(Julius and Dena Cohen Fund)
Mr. and Mrs. Melvin Friedman
(Edna Malen Scholarship Fund)
Mrs. David N. Grosberg
(Edna Malen Scholarship Fund)
Mr. and Mrs. Philip N. Hirsch

DONOR

IN MEMORY OF

MORRIS GLASER

Mr. and Mrs. Bruce Horwitz
Mr. and Mrs. John A. Isaacs, III
(Eleanor and John Isaacs, Jr. Fund)
Mr. and Mrs. Philip Isserman
(Lisa Bry-James Dreyer Fund)
Mrs. Thelma Katz
Mr. and Mrs. I. M. Kay
Mr. and Mrs. Sam C. Klein
Mr. and Mrs. William Klein
Mr. and Mrs. Harold G. Lieberman
Mr. and Mrs. Harry Lieberman
(Bernard Lieberman Fund)
Mr. Jerome M. Lipkin
Mr. and Mrs. Al Loeb
(Benjamin M. Loeb Fund)
Mr. and Mrs. Stephen Loeb
(Benjamin M. Loeb Fund)
Mr. and Mrs. Ralph Lowenbaum, III
(Lisa Bry-James Dreyer Fund)
Mr. and Mrs. Barry Mandel
Mr. and Mrs. Arthur S. Margulis
(Jackie Sue Margulis Fund)
Mr. and Mrs. Julian Mathes
(Sadye Mathes Fund)
Mr. Nathan Mathes
(Sadye Mathes Fund)
Mr. and Mrs. Edwin B. Meissner, Jr.
Mrs. Isadore Carl Middleman
(The "Middy" Fund)
Mr. and Mrs. Ronald S. Prince
Dr. and Mrs. J. G. Probststein
(Elsie Probststein-Harry Koplar Fund)
Mr. and Mrs. Norman Probststein
(Elsie Probststein-Harry Koplar Fund)
Mr. and Mrs. Harry Rosenberg
Mr. and Mrs. Donald Ross
(Edna Malen Scholarship Fund)
Mr. and Mrs. Henry D. Ross
Mr. and Mrs. Samuel C. Sachs
(Louis and Sarah Sachs Fund)
Mr. and Mrs. Sidney Salomon
Mr. and Mrs. Edward Schapiro
Mr. and Mrs. Gordon Scherck, Jr.
(Gordon and Marjorie Scherck Fund)
Mr. and Mrs. Jerome Scissors
(Medical Intensive Care Unit Fund)
Mr. and Mrs. David Sherman, Jr.
Mr. and Mrs. Harry Sherman
Mr. and Mrs. Kay Sherman
Dr. and Mrs. Robert Simon
Mr. and Mrs. David R. Smith
Mr. and Mrs. Elwin Smith
(The "Middy" Fund)
Mr. and Mrs. Fred Sobel
Dr. and Mrs. Samuel D. Soule
Mr. and Mrs. Joseph Steinbach
(Sadye Mathes Fund)
Mr. and Mrs. Maurice Steinback
Mr. and Mrs. Leslie Sterling
Mr. and Mrs. Charles Tober
Mr. and Mrs. Paul L. Tucker
"AUNTIE" GLICK
Mr. and Mrs. Edward F. Ruprecht
FRANK J. GOEBEL
Mr. and Mrs. Harold Blatt
ARNOLD GOLD
Mr. and Mrs. Robert Kligman
DAVE GOLD
(Carol Kaufman Fund)
Mrs. Gertrude Arnowitz
Mrs. Hyman Kaufman
ROSE GOLDENSON
Mr. and Mrs. Edwin Abrams
Mrs. Abram Berns
Mrs. David N. Grosberg
(Edna Malen Scholarship Fund)
Mr. and Mrs. Edgar Levin
MOLLIE GOLDSTEIN
Mr. and Mrs. Irvin Routman
(William and Jerome Molasky Fund)

DONOR	IN MEMORY OF SARAH GOLDSTEIN	DONOR	IN MEMORY OF MORRIS HOFFMAN	DONOR	IN MEMORY OF JAMES E. LEVINE
Dr. and Mrs. Morton Binder		Mr. M. Erwin Bry, Jr.	(Lisa Bry-James Dreyer Fund)	Miss Pearl Goldstein	(Irven Dubinsky Fund)
Mr. and Mrs. Jay Dubinsky		Ms. Sharon Christopher		Mr. and Mrs. Nelson Gould	(Harold M. Zager Fund)
Mr. and Mrs. Russell J. Novoson		Mr. and Mrs. Melvin Friedman	(Edna Malen Scholarship Fund)	Mrs. David N. Grosberg	(Edna Malen Scholarship Fund)
(Irven Dubinsky Fund)	REBECCA GOLLIN	Mr. and Mrs. Robert Kligman		Mr. and Mrs. Milton Hessel	
Mr. and Mrs. R. P. Cohn	GERTRUDE GOLTSMAN	Dr. and Mrs. Fred Levin		Mr. and Mrs. Jerry Hirsch	
Mr. and Mrs. Edwin Abrams	MOTHER OF	Mr. and Mrs. Ralph Lowenbaum, III	(Lisa Bry-James Dreyer Fund)	Mrs. Robert Hoffman	(Irven Dubinsky Fund)
Mrs. Marvin Powers	WILLIAM J. GOODMAN	Mr. and Mrs. Allan Molasky	(William and Jerome Molasky Fund)	Mr. and Mrs. Theodore Hoffman	
	LENORA GREEN	Mr. and Mrs. Dan Morgan	(William and Jerome Molasky Fund)	Mr. Harry A. Kleyman	
Mr. and Mrs. Ira R. Fishbein		Mr. and Mrs. Ken Poslosky		Mr. and Mrs. Frank Kopitsky	
Ms. Anna Rosenblum		Mrs. Jean Sher		Mr. and Mrs. Jerry Kopp	
Mr. and Mrs. Max Sigoloff		Mr. and Mrs. Dan Siegel	MOTHER OF MORT HOFFMAN	Mr. and Mrs. Arthur Liebert	
Mr. and Mrs. Sidney Sigoloff	LOUIS GREENFIELD	Mr. Robert E. Jackman		Mr. and Mrs. Louis Lippe	(Harold M. Zager Fund)
Miss Geraldine Barnholtz		Mr. and Mrs. Lester Sherman	ROBERT HOFFMANN	Mr. and Mrs. Art Loomstein	(Edna Malen Scholarship Fund)
Miss Marian Barnholtz		Mr. and Mrs. Harry Lamberg	ELEANOR MAY ISAACS	Mrs. Louis P. Miller	
Mr. and Mrs. Martin Brand		(Eleanor and John A. Isaacs, Jr. Fund)		Mr. and Mrs. Dan Morgan	(William and Jerome Molasky Fund)
(Oscar Brand Fund)		Mr. and Mrs. John A. Isaacs, Jr.		Mr. and Mrs. Ken Poslosky	
Mrs. Milton Frenkel		Mr. and Mrs. Warner Isaacs	HERMINA JACOBY	Mr. and Mrs. Donald Ross	(Edna Malen Scholarship Fund)
Mr. and Mrs. Burt Garland	ROBERT GROSSMAN	Ms. Evelyn Manheimer		Ms. Molly Ruden	
Mr. and Mrs. Albert J. Edlin		Mr. Bertram Mohr	EDNA HUTTON KAIBLE	Mrs. Jean Sher	
Mrs. Lillian Franklin		Mrs. Kay M. Chaloupsky	(Elsie Probst-Harry Koplal Fund)	Mr. and Mrs. Dan Siegel	
Mr. and Mrs. Louis Greenfield and Bud		(Elsie Probst-Harry Koplal Fund)	HARRY KAYMAN	Mr. and Mrs. J. Lewis Spiegel	(Harold M. Zager Fund)
(William and Jerome Molasky Fund)		Mr. Irwin J. Senturia	(Rebecca Senturia Fund)	Dr. and Mrs. Calvin Weiss	(Dental Care for Retarded)
Mr. and Mrs. Abe Lieberman	SAM HACKER		LENA KELLER		CLEMENCE S. LIEBER
(Bernard Lieberman Fund)		Mr. and Mrs. Eli P. Flusser	(Edna Malen Scholarship Fund)	Mr. and Mrs. Richard Cronheim	(Lewis Bettman Fund)
Dr. and Mrs. Morton Binder		Mr. and Mrs. Robert Kligman	(Sadye Mathes Fund)	Mrs. Erma Rosenberger	FRANCES S. LIEPOLD
Mrs. M. Blum and Son		Mr. and Mrs. Alfred Rich		Mr. and Mrs. Lester Ackerman, Jr.	
Mr. Sam Brodsky		Dr. and Mrs. Milton Voda	HELEN KERNER	Mr. and Mrs. Howard F. Baer	
Mr. and Mrs. Stanley Cohen		Mr. and Mrs. Murray Kleinfeld	(Heart Research Fund)	Mr. and Mrs. Irvin Bettman, Jr.	
(Fannie and Meyer Cohen Fund)		Mrs. Isadore Carl Middleman	(The "Middy" Fund)	Ms. Bernice Cahn	
Miss Cecile Friedman			ISADORE KIRSCHENBAUM	Mr. and Mrs. Jack Desbecker	
Mr. and Mrs. Louis Gelber		Mrs. Sam A. Fredman	(Edna Malen Scholarship Fund)	Mr. and Mrs. Harry L. Franc	(Edna E. Peterson Fund)
(Sadye Mathes Fund)			HYMAN KOHN	Mr. and Mrs. Terry Franc	(Edna E. Peterson Fund)
Mr. and Mrs. Jerry Grodsky		Mrs. Max Cornick	(Edna Malen Scholarship Fund)	Mrs. Frances Greenfield	
Mr. and Mrs. Marvin A. Kosky			BESSIE KOSHNER	Mr. and Mrs. Edward Greensfelder	
(Evelyn B. Stern Fund)		Mr. and Mrs. Semon Frelich		Mr. and Mrs. Samuel R. Heymann	
Mr. and Mrs. Edgar Levin		Mr. and Mrs. Robert Schwartz and Michael	CHARLES A. KOSICK	Mr. and Mrs. Sylvan Jacobson	
Mr. and Mrs. Julian Mathes		Ms. Rosella Lockwood	AARON KUNITZ	Mr. and Mrs. Sam Langsdorf	
(Sadye Mathes Fund)		Mr. and Mrs. Hyman Silverberg	(Dr. Leon Foster Fund)	Mrs. Marjorie Frank Lesser	
Mr. Nathan Mathes	JOSEPH HARTMAN		JOSEPH LAIDERMAN	Mr. and Mrs. J. Melvin Levi	
(Sadye Mathes Fund)		Mr. and Mrs. Bernard Ritzer	MRS. SHELDON LANDAU	Miss Frances Levis	
Mr. Dorothy Molasky		Mrs. Frank Josephson	SEYMOUR LAPIN	Mr. and Mrs. Fredrick Levis	
(William and Jerome Molasky Fund)		Mrs. Marjorie Frank Lesser	BURT LEIBLER	Mr. and Mrs. Kenneth W. Levy	(Edna E. Peterson Fund)
Mr. and Mrs. Dan Morgan		Mr. Norman Probst	(Elsie Probst-Harry Koplal Fund)	Mr. and Mrs. Lawton Levy	
(William and Jerome Molasky Fund)			MOTHER OF	Mr. and Mrs. Willard L. Levy	
Mr. and Mrs. Irvin Routman		Mr. and Mrs. Edward Wittcoff	MRS. CHARLES LELAND	Mr. and Mrs. Harry W. Loeb	(Benjamin M. Loeb Fund)
Mrs. Jacob Schermer			HENRIETTA LEVIN	Mr. and Mrs. Bernard Mellitz	
Mrs. Mannie Schermer		Mrs. David N. Grosberg	(Edna Malen Scholarship Fund)	Dr. and Mrs. Steven Plax	
Mr. and Mrs. Max Sigoloff	FATHER OF		JAMES E. LEVINE	Mr. and Mrs. Louis R. Putzel	(Helen and Henry Putzel Fund)
Mr. and Mrs. Joe Sokolik	MR. AND MRS. MAURICE HELMAN	Mr. and Mrs. Edwin Abrams		Mr. and Mrs. Louis S. Rothschild	(Lewis Bettman Fund)
Mr. and Mrs. Joseph Steinbach	DR. JOSEPH W. HOARD	Mrs. Sidney Dawidoff	(Bernard Lieberman Fund)	Mr. and Mrs. Joseph F. Ruwitch	(Joseph and Elizabeth Ruwitch Fund)
(Sadye Mathes Fund)		Mr. and Mrs. Stanley Gellman		Mr. and Mrs. Henry Scherck	(Gordon and Marjorie Scherck Fund)
Mrs. Julius Cohen		Mr. and Mrs. Solon Gershman		Mr. and Mrs. John M. Shoenberg	
(Julius and Dena Cohen Fund)				Mr. and Mrs. Sydney M. Shoenberg, Jr.	
Mr. and Mrs. Jack A. Cohn		Mr. and Mrs. Jesse Gilbert		Mr. and Mrs. Richard A. Shoninger	
Mrs. Selma Greenberg				Mr. and Mrs. John E. Simon	(John E. Simon Fund)
Mr. and Mrs. Louis Greenfield				Mr. and Mrs. James W. Singer, Jr.	
(William and Jerome Molasky Fund)				Mr. and Mrs. A. Ernest Stein	
Mr. and Mrs. Louis Karpf				Mr. Henry H. Stern	(Evelyn B. Stern Fund)
Mr. and Mrs. Maurice H. Kronemer					
Mr. and Mrs. Ben Ragin					
Mr. and Mrs. Leslie Roth					
Mrs. Harry Rovak					
(Fannie and Meyer Cohen Fund)					

DONOR	IN MEMORY OF	DONOR	IN MEMORY OF	DONOR	IN MEMORY OF
Mr. and Mrs. Lawrence r. Stern	FRANCES S. LIEPOLD	Mr. and Mrs. Henry D. Ross	ROSE OZERSKY	Mr. and Mrs. Fred Steinbach	MAURICE I. ROUFA
Mr. and Mrs. Albert I. Stix			IDA PASTERNAK	(Sadye Mathes Fund)	
Mr. and Mrs. Percy Tucker		Ms. Anna F. Blank	ERICH S. PETZALL		FRIEDA RUDIN
Mr. and Mrs. Millard Waldheim		Mr. and Mrs. Arthur S. Margulis	LeROY PHILLIPS	Ms. Radine C. Levy	JACOB RUDIN
Mr. and Mrs. William Wallbrunn		(Jackie Sue Margulis Fund)		(Jackie Sue Margulis Fund)	
Mrs. Ralph Weil		Mrs. Burton Fischer		Dr. and Mrs. Irwin C. Solar	
Mr. and Mrs. Richard Weil	MOTHER OF	(Jackie Sue Margulis Fund)		(The "Middy" Fund)	DAVID SAKOWSKY
	MR. AND MRS. DAVID LIPKIN	Mr. and Mrs. Morris Huber			
Mr. and Mrs. Victor M. Solov		(Edna E. Peterson Fund)		Mr. and Mrs. Hy Feldman	
	RUTH LIPPMAN	Dr. and Mrs. Fred Levin		Mr. and Mrs. Melvin Marcus	
Mr. and Mrs. Ellis C. Littmann		DR. MAXWELL A. POLLACK		Mr. and Mrs. Jerome Scissors	
	CLAIRE C. LOSOS	Mr. and Mrs. Monroe K. Abrams		(Audiology Fund)	ROSE SALANT
Mr. and Mrs. Semon Frelich		Mr. and Mrs. Arthur Bierman		Mr. and Mrs. Ronald Ross	FRANK SALE
	SUZANNE LOITERSTEIN	Mr. and Mrs. Bernard Gerchen			
Mr. and Mrs. Nathan R. Wegusen		Mr. and Mrs. Solon Gershman		Mr. and Mrs. Ernest Auerbacher	
	MOTHER OF	(Sadye Mathes Fund)		Mr. and Mrs. Carl Glaser, Jr.	
Mr. and Mrs. Hy Feldman	MR. AND MRS. ART LUSTGARTEN	Dr. and Mrs. Milton Jasper		(H. Lister Tuholske Fund)	
		(Dorothy P. Jasper Fund)		Mr. and Mrs. Edwin Levis	
	NATHAN LYNER	Dr. and Mrs. Jay Meyer		(Dr. Llewellyn Sale, Sr. Fund)	
Mr. and Mrs. Hyman Silverberg		(Milton H. Meyerhardt Fund)		Mrs. Harry Tenenbaum	
(Dr. Leon Foster Fund)		Mr. and Mrs. Allan Molasky		(Harry Tenenbaum Fund)	LOUISE SALL
	DR. JOSEPH MAGIDSON	(William and Jerome Molasky Fund)			
Miss Dorothee Block		Mr. and Mrs. Dan Morgan		Mr. and Mrs. George Moll	
Dr. and Mrs. Arthur R. Bortnick		(William and Jerome Molasky Fund)		(William and Jerome Molasky Fund)	GORDON SCHERCK
(Dr. Leon Foster Fund)		Mr. and Mrs. Donald Ross			
Mr. and Mrs. Harold Fishman		(Edna Malen Scholarship Fund)		Miss Orley Shoninger	JANE SCHMIDT
Mrs. Jere Glass		Mrs. Louis J. Ross			
Mrs. David F. Goldberg		Mr. and Mrs. Jay Rovak		Mr. and Mrs. Mike McCarty	JOSEPH SCHNEIDER
Mr. and Mrs. Sam Goldblatt		Mr. and Mrs. Dan Siegel		(Arthritis Foundation)	
Mr. and Mrs. Sidney Jacobs		Mr. and Mrs. Roy J. Silverblatt			
(Dorothy P. Jasper Fund)		Mr. and Mrs. Al Ukman			
Mr. and Mrs. Joseph Plax and Nancy					
Mr. and Mrs. Dan Siegel					
Dr. and Mrs. Samuel D. Soule					
Dr. and Mrs. Sol Weber					
Miss Sara Weiner					
	ERNST J. MALPE				
Mr. and Mrs. Bernard Kornblum					
(Cancer Research Fund)					
Dr. and Mrs. Ben Senturia					
	ETHEL MANDEL				
Mr. and Mrs. Jack Mandel and Maria					
Mr. and Mrs. Paul Mandel					
	MARVIN G. MARSHALL				
Mr. and Mrs. Jules Chasnoff					
Mrs. Rosalind Korach					
Mrs. Betty Slay					
	STEPHEN MARX				
Mr. and Mrs. Albert P. Kopolow					
(Paula and Ludwig Michel Fund)					
	HEDWIG MAY				
Mr. and Mrs. Warner Isaacs					
(Eleanor and John A. Isaacs, Jr. Fund)					
	R. C. MEDLER				
Mr. and Mrs. Morley Winters					
DR. MILTON H. MEYERHARDT					
(Dr. Milton H. Meyerhardt Fund)					
Mr. and Mrs. Julius Meyerhardt					
	PAULA MICHEL				
Dr. and Mrs. Jack B. Rosen and Family					
(Paula and Ludwig Michel Fund)					
	LOUIS MINKOWITZ				
	(Fannie and Meyer Cohen Fund				
	-Unless otherwise noted)				
Mr. and Mrs. Howard Cohen					
Mrs. Julius Cohen					
(Julius and Dena Cohen Fund)					
Mrs. Meyer Cohen					
Mr. and Mrs. Stanley Cohen					
	JACK MINTZ				
	(Dorothy P. Jasper Fund)				
Mrs. Charles Scheck					
Mr. and Mrs. Murray Scheck					
	FLORA McCAFFREY				
Mr. and Mrs. Carl Goodman					
	MORRIS NEBOROCK				
E. M. Siegel Company					
	HARRY NUDELMAN				
Mr. and Mrs. Theodore Hoffman					
	ADELINE OLEVITCH				
Mr. and Mrs. Sidney M. Frager					

DONOR	IN MEMORY OF	DONOR	IN MEMORY OF	DONOR	IN MEMORY OF
Mr. and Mrs. Philip N. Hirsch	JOSEPH SCHNEIDER	Mrs. J. M. Arndt, Sr.	BENJAMIN M. SCHULEIN	Mr. and Mrs. Ben Ellis	FAYE SCHULTZ
Mr. and Mrs. Ralph Hirsch (Irven Dubinsky Fund)		Mr. and Mrs. F. Bert Baer (Mr. and Mrs. F. Bert Baer Fund)		Mr. and Mrs. Maurice Jackman	MOTHER OF JACK SCHUSTER
Mr. and Mrs. Bruce Horwitz		Mr. and Mrs. M. Erwin Bry, Jr. (Lisa Bry-James Dreyer Fund)		Mr. and Mrs. Albert Goodman	
Mr. and Mrs. Howard Hurwitz (Harold M. Zager Fund)		Mrs. Gerome Chambers		Mr. and Mrs. Jack Mathes	MARY SCHWARTZ
Mr. and Mrs. John A. Isaacs, III (Eleanor and John A. Isaacs, Jr. Fund)		Miss Sarah Cohen (Julius and Dena Cohen Fund)		Mrs. Sarah Goodman	HAZEL SCHWEIG
Mr. and Mrs. Philip Isserman (Lisa Bry-James Dreyer Fund)		Mrs. Ben Goldberg		Mr. and Mrs. Leon A. Minsky	
Mr. and Mrs. Sidney Jacobs (Dorothy P. Jasper Fund)		Mrs. Jacob H. Epstein		Mr. and Mrs. Gideon Schiller	SAM SHANFELD
Dr. and Mrs. Milton H. Jasper (Dorothy P. Jasper Fund)		Mrs. Raymond Freed		Mr. and Mrs. Louis Gelber (Sadye Mathes Fund)	
Mr. and Mrs. Joseph Kaiser (Oscar Brand Fund)		Mr. and Mrs. Milton Goldman		Mr. and Mrs. Louis Goodman	
Mrs. Sol Kaiser (William and Jerome Molasky Fund)		Mr. and Mrs. Irwin Harris (Edna Malen Scholarship Fund)		Mr. and Mrs. Bruce Horwitz	
Dr. and Mrs. Daniel Klaff		Mrs. Jessie Harris		Mr. and Mrs. Frank Jacobs	
Mr. Harry A. Kleyman		Mr. and Mrs. Louis Karpf		Dr. and Mrs. Milton Jasper (Dorothy P. Jasper Fund)	
Mr. and Mrs. Maurice H. Kronemer		Mr. Lee I. Kaufman		Mr. and Mrs. Arthur S. Margulis (Jackie Sue Margulis Fund)	
Mr. and Mrs. Edgar Levin		Mr. and Mrs. Jason Kawin		Mr. Nathan Mathes (Sadye Mathes Fund)	
Mr. and Mrs. Harold G. Lieberman		Mr. and Mrs. I. M. Kay		Mr. and Mrs. Ken Poslosky	
Mr. and Mrs. David Lipman (Carol Kaufman Fund)		Mrs. William B. Levy (Bernie A. Ross Fund)		Mrs. Louis J. Ross	
Mr. and Mrs. Louis Lippe (Harold M. Zager Fund)		Mr. and Mrs. Harry Lieberman (Bernard Lieberman Fund)		Mr. and Mrs. Isadore Rothman	
Mrs. Joel Malen (Edna Malen Scholarship Fund)		Mrs. Leslie Mathes		Mr. and Mrs. Joseph Steinbach (Sadye Mathes Fund)	
Mr. and Mrs. Barry Mandel		Mrs. Roswell Messing		Mr. and Mrs. Edward Wittcoff	DORA SHARNEY
Mr. and Mrs. Arthur S. Margulis (Jackie Sue Margulis Fund)		Mr. and Mrs. Gaston Metzger		Dr. and Mrs. Edward J. Berger	
Mr. and Mrs. Jerome Marks		Mr. and Mrs. Robert Metzger		Mr. and Mrs. Harry A. Bobroff	
Dr. and Mrs. William A. Marmor		Mr. and Mrs. Charles Mintz (Heart Research Fund)		Mrs. Oscar Brand (Oscar Brand Fund)	
Mr. and Mrs. Monroe C. Mathes (Sadye Mathes Fund)		Mr. and Mrs. Hubert C. Moog (Bernie A. Ross Fund)		Mr. and Mrs. Martin L. Brand (Oscar Brand Fund)	
Mr. and Mrs. Julian Mathes (Sadye Mathes Fund)		Mr. and Mrs. Harvey Nathanson		Mrs. Max Carl (Oscar Brand Fund)	
Mr. and Mrs. Dan Morgan (William and Jerome Molasky Fund)		Mr. and Mrs. Elvin K. Popper		Mr. and Mrs. Ivan Cohn	
Mosinger-Cohn		Mr. and Mrs. Phillip Rashbaum (Mabel and Simon Frank Fund)		Mrs. Max Cornick (Edna Malen Scholarship Fund)	
Mr. and Mrs. Harvey Nathanson		Mr. and Mrs. Charles S. Rice (Harry Tenenbaum Fund)		Mr. and Mrs. Leonard Duerbeck	
Mr. and Mrs. Carl Pass		Mr. James Robinson		Mr. and Mrs. Arthur Fishel (Dr. Llewellyn Sale, Sr. Fund)	
Mr. and Mrs. Isadore Pass		Mrs. Bernie A. Ross (Bernie A. Ross Fund)		Mr. and Mrs. Burton Garland	
Ms. Nancy Riezman		Mr. and Mrs. Edward F. Ruprecht		Mr. and Mrs. Joseph Goldstein	
Mr. and Mrs. Burt Remis (Irven Dubinsky Fund)		Mr. and Mrs. Samuel C. Sachs (Louis and Sarah Sachs Fund)		Mr. and Mrs. Nelson Gould (Harold M. Zager Fund)	
Mr. and Mrs. Sam Rosenblatt (Dorothy P. Jasper Fund)		Mr. and Mrs. Eugene Schweig		Mr. and Mrs. Robert Hausfater	
Mr. and Mrs. Donald Ross (Edna Malen Scholarship Fund)		Mr. and Mrs. Bert Schweizer, II (Helen and Walter Wolff Fund)		Mr. and Mrs. Jason Kawin	
Mr. and Mrs. Leslie Roth		Mr. and Mrs. Robert Shampaine		Mr. and Mrs. Harry Laba (Dorothy P. Jasper Fund)	
Mrs. Harry Rovak (Fannie and Meyer Cohen Fund)		Mr. and Mrs. Charles Sigoloff		Mr. and Mrs. Bram Lewin (Sadye Mathes Fund)	
Mr. and Mrs. Edward Schapiro		Mrs. Herbert Simon (Ira and Herbert Simon Fund)		Mr. and Mrs. Louis Lippe (Harold M. Zager Fund)	
Mr. and Mrs. Harry D. Schneider (Oscar Brand Fund)		Mr. Julian Simon (Ira and Herbert Simon Fund)		Mr. and Mrs. Arthur Mathes (Sadye Mathes Fund)	
Mr. and Mrs. Jerome Scissors (Medical Intensive Care Unit Fund)		Mr. and Mrs. A. Ernest Stein		Mr. and Mrs. Robert Mathes (Sadye Mathes Fund)	
Mr. and Mrs. Ira H. Sharp (Fannie and Meyer Cohen Fund)		Mr. and Mrs. Alfred F. Steiner		Mrs. William Molasky (William and Jerome Molasky Fund)	
Mrs. Milton Sharp (Fannie and Meyer Cohen Fund)		Mr. and Mrs. Harry Steiner, Jr.		Mr. and Mrs. Leon Preston	
Mr. and Mrs. Harry Sherman		Mr. Henry H. Stern (Evelyn B. Stern Fund)		Mr. and Mrs. Boris Tureen	
Mrs. Herbert Simon (Ira and Herbert Simon Fund)		Mr. Walter G. Stern (Evelyn B. Stern Fund)		Mr. and Mrs. Wilson Weinberger	LOU SHAVEL
Mr. Julian Simon (Ira and Herbert Simon Fund)		Mrs. Harry Tenenbaum (Harry Tenenbaum Fund)		Mr. and Mrs. Sheldon Shapiro	CEIL SHER
Mr. and Mrs. David R. Smith		Mr. and Mrs. Louis Tiger		Mrs. Emanuel B. Sher ESTHER PREBISH SHER	
Mr. and Mrs. J. Lewis Spiegel (Harold M. Zager Fund)		Mr. and Mrs. Percy Tucker		Ms. Radine C. Levy (Jackie Sue Margulis Fund)	FRANK SIEGEL
Mr. and Mrs. Elliot Stein		Mr. and Mrs. James L. Watel		Mr. and Mrs. Sam Goldblatt MARGARET SIEGFRIED	
Mr. and Mrs. Boris Tureen		Mr. and Mrs. Robert Watel		Ms. Alyce E. Blundell	
Mr. and Mrs. Nathan Tureen (Oscar Brand Fund)		Mr. and Mrs. J. C. Waxman		Mr. and Mrs. William Marshall	CHARLES SILVER
Mr. Murray Vittert (Carol Kaufman Fund)		Mr. and Mrs. Robert Wegusen		Mr. Dan Susman LOVED ONE OF MR. AND MRS. BUD SKOLNICK	
Mrs. Ethyle Weinstein (Fannie and Meyer Cohen Fund)		Mr. and Mrs. Meyer K. Weil		Dr. and Mrs. Fred Levin (Edna Malen Scholarship Fund)	
Mr. and Mrs. Harold Yalem (Yalem Research Fund)		Mr. and Mrs. Edward Wittcoff			
		Mr. and Mrs. Charles Yalem			
		Mr. and Mrs. Richard Yalem			
			HELEN SCHULMAN (Fannie and Meyer Cohen Fund -Unless otherwise noted)		
		Mr. and Mrs. Howard Cohen			
		Mrs. Julius Cohen (Julius and Dena Cohen Fund)			
		Mrs. Meyer Cohen			
		Mr. and Mrs. Stanley Cohen			
		Mr. and Mrs. David Oxenhandler (Julius and Dena Cohen Fund)			

DONOR

IN MEMORY OF

Mr. and Mrs. Russell Novoson
(Irven Dubinsky Fund)

TILLIE STEINBACK

Ms. Bernice Grossman
(Dorothy P. Jasper Fund)

Mr. and Mrs. Sam Padratzik

Mr. and Mrs. Maurice Steinback

Mr. and Mrs. Bernard Weitzman

Mr. and Mrs. Morley Winters

LOUIS STEINBAUM

Mr. and Mrs. Thomas Berger

Mr. and Mrs. Robert Byers

Mr. and Mrs. John A. Isaacs, III
(Eleanor and John A. Isaacs, Jr. Fund)

Mr. and Mrs. Donn H. Lipton

Mr. and Mrs. Stephen H. Loeb
(Benjamin M. Loeb Fund)

Mr. John Marcus

Mr. and Mrs. Arthur S. Margulis
(Jackie Sue Margulis Fund)

Mr. and Mrs. Melvin Mednikow
(Cancer Research Fund)

Mr. and Mrs. Louis A. Montell
(William and Jerome Molasky Fund)

Mr. and Mrs. Zale Oxenhandler

Mr. and Mrs. Clifford Shanfeld
(Jackie Sue Margulis Fund)

Mr. and Mrs. David Sherman, Jr.
E. M. Siegel Company

Mr. and Mrs. Robert H. Slosberg

Mr. and Mrs. Joseph Steinbach
(Sadye Mathes Fund)

Mr. and Mrs. Paul L. Tucker

Dr. and Mrs. Sol Weber

ALBERT STEINBERG

Mr. and Mrs. Nathan Tureen
(Oscar Brand Fund)

LOUIS STEINBERG

Mr. and Mrs. Milton Sharp
(Fannie and Meyer Cohen Fund)

Mr. and Mrs. Roy Silverblatt

BIRTHDAY OF RAE STEINER

Mr. and Mrs. Victor N. Friedman

SOL STEINMAN

Mr. and Mrs. Meyer Levy

MOSS A. STERN

Mrs. Helen Wolff
(Helen and Walter Wolff Fund)

EMIL TAMM
(Emil Tamm Fund)

Mrs. Harry Sandperl

Miss Caroline Tamm

Mrs. Emil Tamm

Dr. Harry Tamm

HORTENSE TANNENBAUM

Mr. and Mrs. Ivan A. Cohn

Mr. and Mrs. Jack Cohn

Mr. and Mrs. Burton Karney

Dr. and Mrs. Stanley Reitman

HARRY TENENBAUM
(Harry Tenenbaum Fund)

Mrs. M. O. Birk

Mrs. Leslie R. N. Carvalho

The Charles Rice Family

Mrs. Harry Tenenbaum

EVELYN TREUMAN

Mr. and Mrs. Richard Cronheim
(Lewis Bettman Fund)

JOHN UGORETZ

Mrs. John Ugoretz

MRS. MOLLIE WASSERMAN

Mr. Dan Susman

LEATRICE WEINBERG

Ms. Naomi Abrams

Mr. and Mrs. Jerome Bader

Mr. and Mrs. Hyman Kaufman
(Carol Kaufman Fund)

Mr. and Mrs. George Moll
(William and Jerome Molasky Fund)

Mr. and Mrs. Willard Orenstein

Mr. and Mrs. Sheldon Silberstein

DONOR

IN MEMORY OF

LEATRICE WEINBERG

Mrs. Ruth Steinger
(Edna Malen Scholarship Fund)

Mrs. Ada Wesson

Mr. and Mrs. Morley Winters
(Cancer Research Fund)

ANNA WEISBERG

Mr. and Mrs. Arthur Bierman

Mr. and Mrs. Donald Oglander
(Heart Research Fund)

KENNETH WEISS

Mr. and Mrs. Sam Glazer

Mr. and Mrs. Harris Kramer

Dr. and Mrs. Samuel D. Soule

CHESTERFIELD WHITE

Mrs. Albert Bierman

AL WILDMAN

Mrs. Herbert Simon
(Ira and Herbert Simon Fund)

Mr. Julian Simon
(Ira and Herbert Simon Fund)

Ms. Sara Singer

MAX YAFFE

Mr. and Mrs. Louis Goodman

Mr. and Mrs. Art Loomstein

Mr. and Mrs. Edwin Neuman

Mr. and Mrs. Sam Padratzik and Sandie

LEONARD YARUS

Mrs. David N. Grosberg
(Edna Malen Scholarship Fund)

ALBERT YAVITZ

Mr. and Mrs. Monroe K. Abrams

Mr. and Mrs. Melvin Friedman
(Edna Malen Scholarship Fund)

Mr. and Mrs. Louis Gelber
(Sadye Mathes Fund)

Mr. and Mrs. Samuel Goldblatt

Mr. and Mrs. Frank Gollub

Mr. and Mrs. Sam J. Golman

Mr. and Mrs. Jerry Hirsch

Mr. and Mrs. Jerome Kalishman

Mr. and Mrs. Sidney Katz
(Lisa Bry-James Dreyer Fund)

Mr. and Mrs. Robert Levinsohn
(Edna Malen Scholarship Fund)

Mr. and Mrs. Bram Lewin
(Sadye Mathes Fund)

Mr. and Mrs. Jerry Marcus

Mr. and Mrs. Arthur Mathes
(Sadye Mathes Fund)

Mr. and Mrs. Julian Mathes
(Sadye Mathes Fund)

Mr. Nathan Mathes
(Sadye Mathes Fund)

Mr. and Mrs. Allan Molasky
(William and Jerome Molasky Fund)

Mrs. William Molasky
(William and Jerome Molasky Fund)

Mr. and Mrs. George Moll

Mr. and Mrs. Donald Ross
(Edna Malen Scholarship Fund)

Mr. and Mrs. Richard L. Ross
(Edna Malen Scholarship Fund)

Mr. and Mrs. E. P. Schwartz

Mr. and Mrs. Max Sigoloff

Mr. and Mrs. Elwin Smith
(The "Middy" Fund)

Mr. and Mrs. Joseph Steinbach
(Sadye Mathes Fund)

Mr. and Mrs. Morton Werner

Mrs. Barney Wides

SAM ZIMMERMAN

Mr. and Mrs. Herman Israel

Mr. and Mrs. Morton Werner

Mr. R. R. Zimmerman

Mrs. Sadie Zimmerman

Gifts in Memory

DONOR

IN HONOR OF

MRS. LEONARD ADREON
(Birthday)

Dr. and Mrs. Harold Joseph

DR. MORRIS ALEX AND OFFICE STAFF
(Sincere Appreciation)

Mr. Herbert Senturia
(Dr. Arthur E. Strauss Fund)

J. MARC ARBER
(Birthday)

Dr. and Mrs. William Berman

MRS. FRED ARONSON
(Recovery)

Mr. and Mrs. Carl Pass

MR. AND MRS. HERBERT ARNSTEIN
(60th Wedding Anniversary)

Mr. and Mrs. Paul Berwald

Mrs. Julian B. Cohn

Mrs. Carl Glaser

Mr. and Mrs. Stanley Richman

Mrs. Louis G. Rothschild

DR. ARTHUR AUER
(Recovery)

Mr. and Mrs. Semon Frelich

BO AXELROD
(Recovery)

Mrs. Joel Malen
(Edna Malen Scholarship Fund)

MRS. HOWARD BAER
(Special Birthday)

Mr. and Mrs. John Levy
(Josal Fund)

Mr. and Mrs. Harry Loeb
(Benjamin M. Loeb Fund)

Mr. and Mrs. Frank P. Wolff

MRS. GENE BARENHOLTZ
(Recovery)

Dr. and Mrs. Harold Joseph

MARIAN BARNHOLTZ
(Speedy Recovery)

Mr. Max Barnholtz

Mrs. Rose Yaker

TED BARR
(Speedy Recovery)

Mr. and Mrs. Sam Glazer
(Heart Research Fund)

MR. AND MRS. B. L. BEARMAN
(25th Wedding Anniversary)

Mr. and Mrs. J. A. Baer, II
(Arthur Baer Fund)

Mr. and Mrs. Robert Buell

Mr. and Mrs. Jack Edlin

Mr. and Mrs. Solon Gershman
(Sadye Mathes Fund)

Mr. and Mrs. John Levy
(Josal Fund)

Mr. and Mrs. Irving Londy
(Mabel and Simon Frank Fund)

Mr. and Mrs. Jerry Miller

Mr. and Mrs. Elliot Stein

Mr. and Mrs. Charles Tober

Mr. and Mrs. Robert Wegusen

MR. AND MRS. STEPHEN BERNSTEIN
(Birth of Son)

Mr. and Mrs. Robert Bernstein
(William and Jerome Molasky Fund)

IRVIN BETTMAN, JR.
(Birthday)

Mr. and Mrs. Sam Langsdorf

DONOR	IN HONOR OF	DONOR	IN HONOR OF	DONOR	IN HONOR OF
	MRS. WILLIAM BIERMAN (Recovery)		RICHARD B. CRONHEIM (Birthday)		MR. AND MRS. HARRIS FRANK (25th Wedding Anniversary) (Lisa Bry-James Dreyer Fund Unless otherwise noted)
Mr. and Mrs. Nelson Gould (Harold M. Zager Fund)	FRED BONEM (Recovery)	Mr. and Mrs. Paul Ullman (Lewis Bettman Fund)	ABE DANIEL (Recovery of Sister)	Mr. and Mrs. J. A. Baer, II (Lucille Baer Fund)	
Mr. and Mrs. Willy Herrmann	MR. AND MRS. MARTIN BRAND (40th Wedding Anniversary)	Mr. Jacob Koplar (Sadie R. Koplar Fund)	MR. AND MRS. ABE DANIEL (Birth of Grandchild) (Sadie R. Koplar Fund)	Mr. and Mrs. Robert Buell	
Mr. and Mrs. Harry Lieberman (Bernard Lieberman Fund)	MR. AND MRS. IRVING BRIN (25th Wedding Anniversary)	Mr. Allan Koplar		Mr. and Mrs. Jack Edlin	
Mrs. Joel Malen (Edna Malen Scholarship Fund)	JOHN E. BROWN (Special Birthday)	Mr. Jacob Koplar	STEVE DEMOFF (Engagement)	Mr. and Mrs. Jerome Kalishman	
Mr. and Mrs. Semon Frelich	ELSIE BRUCH (Speedy Recovery)		SAUL DUBINSKY (Birthday)	Mr. and Mrs. John Levy (Josal Fund)	
Mr. and Mrs. Simon Rose (Harold M. Zager Fund)	MRS. M. ERWIN BRY (Recovery) (Lisa Bry-James Dreyer Fund -Unless otherwise noted)		JACK EDLIN (Birthday)	Mr. and Mrs. Gordon Scherck, Jr. (Gordon and Marjorie Scherck Fund)	
Mr. and Mrs. Harry S. Ackerman		Mr. and Mrs. Bram Lewin (Jack and Norma Edlin Fund)	MR. AND MRS. JACK EDLIN (Wedding Anniversary)	Mr. and Mrs. Edward J. Turner	DAVID FRELICH (Birthday)
Mrs. Avery Carp		Mr. and Mrs. Bram Lewin (Jack and Norma Edlin Fund)	MRS. HARRY EISENSTATT (Special Birthday)	Mr. and Mrs. Harvey Nathanson	FLORA FREUND (85th Birthday)
Jewish Hospital Auxiliary		Mr. and Mrs. Louis Heyman (Edna Malen Scholarship Fund)	BECKY ELKAS (Birthday)	Mrs. Fritz Marx	MRS. S. C. FRIEDMAN (Birthday)
Mr. and Mrs. Sam Langsdorf		Mrs. Harry Agris	ESTHER EPSTEIN (80th Birthday)	Mr. and Mrs. Isidore Reisfeld	ANN GARLAND (Recovery)
Mr. and Mrs. Edgar Levin		Mr. and Mrs. Thomas Berger	RAYMOND EPSTEIN (Recovery)	Mr. and Mrs. Semon Frelich	ANNE GARRETT (Recovery)
Mr. and Mrs. John Levy (Josal Fund)		Mrs. Harry Schasch	BETTY FELDMAN (Recovery)	Mr. and Mrs. Morris Appelbaum	MRS. BUMAN GINSBERG (Recovery)
Mr. and Mrs. Ralph Lowenbaum, III		Mrs. Samuel I. Sievers	JACK FINKE (Birthday)	Mr. and Mrs. Carl Pass	MR. AND MRS. IRWIN GITTLEMAN (Special Wedding Anniversary)
Mr. and Mrs. Edwin Shifrin		Mrs. Julius Cohen (Julius and Dena Cohen Fund)	JACK FINKE (Recovery)	Mr. and Mrs. Abe Lieberman (Bernard Lieberman Fund)	CORINNE GLASER (Recovery)
Mr. and Mrs. Donald Quicksilver (Renal Fund)	MR. AND MRS. MOE BUTCHKISS (New Grandchild)	Mr. and Mrs. Jerome Scissors (Audiology Fund)	MR. AND MRS. JACK FINKE (50th Wedding Anniversary)		
Mrs. Harry Agris	MR. AND MRS. WOOLF CHACKES (Their Marriage)	Mr. and Mrs. Ted Smith	DR. AND MRS. I. J. FLANCE (35th Wedding Anniversary)		
Mrs. Emanuel A. Chackes	MRS. HARRY CHOSID (Birthday)	Mr. and Mrs. Ted Smith	MRS. ROBERT FISHER (Special Birthday)		
Mrs. Ethyle Weinstein	GEORGE COHEN (Recovery)	Mr. and Mrs. Ted Smith	DR. AND MRS. I. J. FLANCE (35th Wedding Anniversary)		
Mr. and Mrs. Ted Smith	MR. AND MRS. HERBERT COHEN (Their Birthdays)	Mr. and Mrs. Ted Smith	MRS. ROBERT FISHER (Special Birthday)		
Mr. and Mrs. Jeff Ziedman (Marilyn Shevitz Fund)	MARSHA COHEN (Birthday)	Mr. and Mrs. Abe Lieberman (Bernard Lieberman Fund)	DR. AND MRS. I. J. FLANCE (35th Wedding Anniversary)		
Mr. and Mrs. Jeff Ziedman (Marilyn Shevitz Fund)	MRS. JOSEPH L. COHEN (80th Birthday)	Mr. and Mrs. Alvin Siteman	MRS. ROBERT FISHER (Special Birthday)		
Mr. and Mrs. Irwin R. Harris (Edna Malen Scholarship Fund)		Mr. and Mrs. Robert Jasper (Dorothy P. Jasper Fund)	DR. AND MRS. I. J. FLANCE (35th Wedding Anniversary)		
Mr. and Mrs. Eugene Schweig		Mr. and Mrs. Earl Kessler	MRS. ROBERT FISHER (Special Birthday)		
Mrs. Ben L. Shifrin (Ben L. Shifrin Fund)		DR. AND MRS. I. J. FLANCE (35th Wedding Anniversary)	DR. AND MRS. I. J. FLANCE (35th Wedding Anniversary)		
Mr. and Mrs. Nathan Wegusen	MRS. MEYER COHEN (Birthday)	Dr. and Mrs. Carl J. Heifetz	MARIE FLEISCHAKER (Recovery)		
Mr. and Mrs. Walter Green and Bobby (Fannie and Meyer Cohen Fund)	MRS. BEN CORNBLEET (Birthday)	Mr. and Mrs. Murray Schneider	DR. LEON J. FOX (Thank You)		
Mrs. Bernie A. Ross (Bernie A. Ross Fund)					

DONOR	IN HONOR OF	DONOR	IN HONOR OF	DONOR	IN HONOR OF
	SAM E. GRODSKY (Recovery) (Edna Malen Scholarship Fund)		JEN KOVEN (Speedy Recovery)		MR. AND MRS. TOBIAS LEWIN
Mrs. Sam A. Fredman		Mr. and Mrs. Joseph F. Ruwitch (Elizabeth and Joseph Ruwitch Fund)		Mrs. Rose Senturia (Edna Peterson Fund)	
Mrs. Edward Kramer		MR. AND MRS. HAROLD KRANE (25th Wedding Anniversary)		Mr. and Mrs. Earl Susman	
Mr. and Mrs. Donald Ross	RENA GROSBERG (Recovery)	Mr. and Mrs. Jerry Hirsch	PHIL KRETCHMAR (75th Birthday)	Mr. and Mrs. Frank P. Wolff	MRS. HERBERT LEWIS (Special Birthday)
Mr. and Mrs. Isadore Dankner (Edna Malen Scholarship Fund)					
Mr. Jack Weinberg	MRS. MILTON GROSSMAN (Special Birthday)	Mr. and Mrs. Louis Cohen Mrs. Louis J. Ross	MRS. SIDNEY LANDAU (Recovery)	Mrs. Albert J. Edlin Mr. and Mrs. Ira R. Fishbein Mr. and Mrs. Steve Freedman (Bernard Lieberman Fund)	
Mr. and Mrs. Louis Karpf	HELEN HEISLER (85th Birthday)	Mr. and Mrs. Charles Mintz	DR. GILBERT LASSAR (Speedy Recovery)	Mr. and Mrs. Isidore Reisfeld Mr. and Mrs. Eugene Shapiro Mr. and Mrs. Theodore Waxman (Bernard Lieberman Fund)	
Mrs. Abraham J. Novoson (Irven Dubinsky Fund)	KEITH HELIGMAN (Bar Mitzvah)	Mr. and Mrs. Bernard Kornblum (Heart Research Fund)		Mr. and Mrs. Nathan R. Wegusen	ABE LIEBERMAN (Recovery)
Mrs. David N. Grosberg (Edna Malen Scholarship Fund)	MR. AND MRS. BRUCE HENDIN (Birth of Daughter)	Dr. and Mrs. Arnaldo Kuczer	MR. AND MRS. J. MELVIN LEVI (40th Wedding Anniversary)	Mr. and Mrs. Samuel J. Golman Mr. and Mrs. Robert Jasper (Dorothy P. Jasper Fund)	
Mr. and Mrs. Robert Bernstein (William and Jerome Molasky Fund)	WILLY HERRMANN (25th Wedding Anniversary)	Mr. and Mrs. Lester Adelson Mr. and Mrs. Richard Cronheim (Lewis Bettman Fund)	Mr. and Mrs. John A. Isaacs, III (Eleanor and John A. Isaacs, Jr. Fund)	Mr. and Mrs. Bram Lewin (Bernard Lieberman Fund)	
Mr. Martin Landauer	BELLE HERZBERG (Speedy Recovery)	Mrs. Ben L. Goldberg	MR. AND MRS. EDWIN LEVIS (Wedding Anniversary)	Mr. and Mrs. Carl Pass Ms. Mildred Shapiro	MR. AND MRS. ABE LIEBERMAN (Birth of New Grandchild)
Mrs. Phoebe Goldberg	MAXINE HESS (Birthday)	Mr. and Mrs. John A. Isaacs, III (Eleanor and John A. Isaacs, Jr. Fund)	CARL LEVY (Speedy Recovery)	Mr. and Mrs. Carl Pass	MR. AND MRS. FRANK LIEBERMAN (50th Wedding Anniversary) (Bernard Lieberman Fund -Unless otherwise noted)
Mr. and Mrs. Samuel J. Golman	BESS HOFFMAN (70th Birthday)	Mrs. Clifford Glaser	BRAM LEWIN (Speedy Recovery)	Mr. and Mrs. Bruce Carp Mrs. Sidney Dawidoff	
Mr. and Mrs. Preston Bank		Mr. and Mrs. Julius Sanger		Mr. and Mrs. Abe Lieberman Mr. and Mrs. Bart Lieberman Mr. and Mrs. Harry Lieberman Mrs. Tillie Lieberman	
Mr. and Mrs. Marvin B. Schmidt	SYLVAN JACOBSON (Recovery)	Mr. and Mrs. Maury Abramson (Sadye Mathes Fund)		Mr. and Mrs. Theodore Waxman	MARY LONDON (Recovery)
Ms. Jessie Harris		Mr. and Mrs. M. Erwin Bry (Lisa Bry-James Dreyer Fund)			
Mr. and Mrs. Charles Mintz	MRS. SYLVAN JACOBSON (Birthday)	Mr. and Mrs. Stanley Cohen (Fannie and Meyer Cohen Fund)		Mr. and Mrs. Beryl Kohn Mrs. Saul B. Kohn	LORETTA LUGGER (Recovery)
Mrs. William B. Levy (Bernie A. Ross Fund)		Mr. and Mrs. Albert Gerber Mr. and Mrs. Samuel J. Golman Mrs. Robert Hoffman (Irven Dubinsky Fund)			
DR. MILTON H. JASPER (60th Birthday)		Mr. and Mrs. Robert Jasper (Dorothy P. Jasper Fund)		Mr. Jacob Koplar (Sadie R. Koplar Fund)	DAVID LYNCH (Recovery)
(Dorothy P. Jasper Fund)		Mr. and Mrs. Sidney Katz (Lisa Bry-James Dreyer Fund)			
Dr. and Mrs. Barry Jasper		Mr. and Mrs. Thomas Lewin Mr. and Mrs. Harry Lieberman (Bernard Lieberman Fund)		Dr. and Mrs. Arnaldo Kuczer	EDNA MALEN (Appreciation)
Mr. and Mrs. Robert Jasper	MR. AND MRS. JULIUS KAHN (Wedding Anniversary)	Mr. and Mrs. Julian Mathes (Sadye Mathes Fund)		Mr. and Mrs. Bo Axelrod (Edna Malen Scholarship Fund)	
Mr. and Mrs. Fritz Mann (Helen and Henry Putzel Fund)		Mr. and Mrs. Monroe C. Mathes (Sadye Mathes Fund)		MR. AND MRS. JAMES E. MALEN (Wedding Anniversary)	
	LOUIS KARPFF (Birthday)	Mr. Nathan Mathes (Sadye Mathes Fund)		Mrs. Joel Malen (Edna Malen Scholarship Fund)	
Mr. and Mrs. Benjamin Shapiro		Mr. and Mrs. Alvin S. Novack (Edna Malen Scholarship Fund)		MR. AND MRS. AL MARGULIS (40th Wedding Anniversary)	
ROGER KATZ (Special Birthday)		Mrs. Harry Rubenstein Mr. and Mrs. Sidney Salomon, Jr. Mrs. Jacob Schermer Mrs. Mannie Schermer		Mr. and Mrs. M. W. Shanfeld (Jackie Sue Margulis Fund)	IRVIN MARTIN (Recovery)
Mr. and Mrs. Semon Frelich	ALMA KESSLER (Recovery)	Mr. and Mrs. Joseph Steinbach (Sadye Mathes Fund)			
Mr. and Mrs. Bernard Gerchen	MR. AND MRS. BARNEY KLEIN (Recovery of Son) (Sadie R. Koplar Fund)	Mrs. Mary Steinbach (Sadye Mathes Fund)		Mr. and Mrs. Leonard Kornblum	ROBERT MATHES (Recovery)
Mr. Allan Koplar		Mrs. Ruth Steinger and Family (Edna Malen Scholarship Fund)		Mr. and Mrs. Sidney Katz (Lisa Bry-James Dreyer Fund)	
Mr. Jacob Koplar	ROBERT KLIGMAN (50th Birthday)	Mr. and Mrs. Albert I. Stix	MR. AND MRS. TOBIAS LEWIN (Wedding Anniversary)	Mr. and Mrs. Dan Morgan (William and Jerome Molasky Fund)	
Mr. and Mrs. Dan Morgan (William and Jerome Molasky Fund)		Mr. and Mrs. Sidney Goldberg Mr. and Mrs. John A. Isaacs, Jr. (Edna Peterson Fund)		ROSWELL MESSING, JR. (Birthday)	
				Mr. and Mrs. Edward Greensfelder	

DONOR	IN HONOR OF	DONOR	IN HONOR OF	DONOR	IN HONOR OF
	MR. AND MRS. ROSWELL MESSING, JR. (Wedding Anniversary)		LOUIS PUTZEL (Birthday)	MR. AND MRS. SAMUEL C. SACHS	
Dr. and Mrs. Ben Senturia	MRS. MILTON MEYERHARDT (Special Birthday)	Mr. Louis W. Joss (Helen and Henry Putzel Fund)	DR. MARVIN RENNARD (Thank You)	Mr. and Mrs. Saul Wolff (Louis and Sarah Sachs Fund)	MR. AND MRS. FRED R. SALE (Wedding Anniversary)
Mrs. Harvey Frohlichstein (Milton H. Meyerhardt Fund)	MRS. ROBERT MILLER (Recovery)	Mrs. Marjorie H. Greer	MR. AND MRS. CHARLES RICE (25th Wedding Anniversary)	Mr. and Mrs. Bernard Gerchen	SAM SCHAEFFER (Speedy Recovery)
Mr. and Mrs. Carl Pass	MRS. R. MORTON MOSS (Birthday)	Mr. and Mrs. Harry L. Franc, Jr. (Edna Peterson Fund)	Mr. and Mrs. Steve Loeb Mrs. Gordon Scherck (Gordon and Marjorie Scherck Fund)	Dr. and Mrs. Jay Meyer (Milton H. Meyerhardt Fund)	DR. HAROLD SCHEFF (Recovery)
Mrs. Elsworth S. Bauman	DAVID N. MYERS	Mr. and Mrs. Louis Karpf Mrs. Bernie A. Ross (Bernie A. Ross Fund)	MR. AND MRS. ALFRED L. RICHTER (Wedding Anniversary)	Dr. and Mrs. Harry Agress	
Mr. and Mrs. Paul Berman	MR. AND MRS. HENRY NANKIN (50th Wedding Anniversary)		NORMA ROBINSON (Recovery)	Mr. and Mrs. Myron Novack	
Mrs. Sol Meyer (Cancer Research Fund)	MRS. HYMEN SHIFRIN (Ben L. Shifrin Fund)	Mr. and Mrs. Morris Huber (Edna Peterson Fund)	BELLA FAE ROSENBERG (Recovery)	Mr. and Mrs. Harry Rosenberg	
Mrs. David N. Grosberg (Edna Malen Scholarship Fund)	ROSE NEWBERGER (Birthday)	Mr. and Mrs. J. Lewis Spiegel (Harold M. Zager Fund)	SAM ROSENBLOOM (Recovery)	Mrs. Bess Siegel	
Mr. and Mrs. Paul Berman	LESTER NIEMAN (Recovery)			Mrs. Samuel I. Sievers	
Mrs. Sol Meyer (Cancer Research Fund)	NORMA NISSENBAUM (Speedy Recovery)	Mr. and Mrs. Leonard Growe Mr. and Mrs. Jerome Scissors (Medical Intensive Care Unit Fund)		Mr. and Mrs. Harry Smith	DR. AND MRS. HAROLD SCHEFF (Wedding Anniversary)
Mrs. David N. Grosberg (Edna Malen Scholarship Fund)	MR. AND MRS. M. A. OBERMAN (50th Wedding Anniversary)	Mrs. Dorothy Smith	MRS. NATE ROSENBLOOM (Recovery)		
Mr. and Mrs. Paul Berman	Mr. and Mrs. Louis Meisel (Julius and Sara Ginsberg Fund)			Mrs. Bess Siegel	HENRY SCHERCK (Recovery)
Mrs. Sol Meyer (Cancer Research Fund)	SIMON PACKMAN (Speedy Recovery)	Mr. and Mrs. Sam E. Grodsky (Edna Malen Scholarship Fund)		Mr. and Mrs. John Levy (Josal Fund)	
Mrs. David N. Grosberg (Edna Malen Scholarship Fund)	Mr. Max Barnholtz	Mrs. Sol Kaiser (William and Jerome Molasky Fund)			DR. SAM SCHNEIDER (Birthday)
Mr. and Mrs. Paul Berman	MR. AND MRS. MAX PASKAL (50th Wedding Anniversary)	Mr. and Mrs. Maurice H. Kronemer			(Harold M. Zager Fund)
Mrs. Sol Meyer (Cancer Research Fund)	Mr. and Mrs. Phil L. Siteman	Mr. and Mrs. Isadore Pass		Mr. and Mrs. William B. Bierman and Richard	DR. AND MRS. SAM SCHNEIDER (New Home)
Mrs. David N. Grosberg (Edna Malen Scholarship Fund)	MR. AND MRS. SANDY PETERS (Their Marriage)		EDWARD ROSENKRANZ (Speedy Recovery)		
Mr. and Mrs. Paul Berman	Mrs. Julius Cronheim (Lewis Bettman Fund)	Mr. Max Barnholtz		Mrs. Joel Malen (Edna Malen Scholarship Fund)	
Mrs. Sol Meyer (Cancer Research Fund)	Mr. and Mrs. Sam Langsdorf	MR. AND MRS. MARVIN ROUTMAN (Speedy Recovery)			DR. FRED O. SCHWARTZ (Birthday)
Mrs. David N. Grosberg (Edna Malen Scholarship Fund)	Mr. and Mrs. Harry W. Loeb (Benjamin M. Loeb Fund)	Mr. and Mrs. Marvin Kling (Edna Malen Scholarship Fund)		Mrs. Joel Malen (Edna Malen Scholarship Fund)	
Mr. and Mrs. Paul Berman	SARAH PHILLIPS (Recovery) (Sadie R. Koplal Fund)	Mrs. Bernie A. Ross (Bernie A. Ross Fund)		MR. AND MRS. EUGENE SCHWEIG, SR. (Wedding Anniversary)	
Mrs. Sol Meyer (Cancer Research Fund)	Mr. Allan Koplal		ADOLPH RUBEL (Birthday)	Mr. and Mrs. Julius Schweich (William Schweich Fund)	
Mrs. David N. Grosberg (Edna Malen Scholarship Fund)	Mr. Jacob Koplal	Mr. and Mrs. Arthur Bierman			TED SEIVER (Birthday)
Mr. and Mrs. Paul Berman	MR. AND MRS. ISADORE POGER (Safe Return Home) (Sadie R. Koplal Fund)	Mr. and Mrs. Saul L. Rubin	ROBERT RUBIN (Birthday)	Mr. and Mrs. Bernard Kornblum	
Mrs. Sol Meyer (Cancer Research Fund)	Mr. Allan Koplal	MR. AND MRS. STEVE RUDOY (Birth of Child) (Sadie R. Koplal Fund)		DR. AND MRS. BEN SENTURIA (30th Wedding Anniversary)	
Mrs. David N. Grosberg (Edna Malen Scholarship Fund)	Mr. Jacob Koplal		SAM RUSH (75th Birthday)	Mr. and Mrs. Stanley Cohen (Fannie and Meyer Cohen Fund)	
Mr. and Mrs. Paul Berman	MR. AND MRS. LOUIS POGER (Son's Marriage) (Sadie R. Koplal Fund)	Mr. and Mrs. David Moulton and Children		Dr. and Mrs. Max Deutch	
Mrs. Sol Meyer (Cancer Research Fund)	Mr. Allan Koplal	MR. AND MRS. SAMUEL C. SACHS (Their Marriage)		Dr. and Mrs. Norman Drey	
Mrs. David N. Grosberg (Edna Malen Scholarship Fund)	Mr. Jacob Koplal			Mr. and Mrs. Stanley Dreyer	
Mr. and Mrs. Paul Berman	MR. AND MRS. MARTIN BRAND (Oscar Brand Fund)	Mr. and Mrs. Arthur Bierman		Dr. and Mrs. Clarence T. Eckert	
Mrs. Sol Meyer (Cancer Research Fund)	Mr. and Mrs. Semon Frelich	Mr. and Mrs. Saul L. Rubin		Mr. and Mrs. Edward Greensfelder	
Mrs. David N. Grosberg (Edna Malen Scholarship Fund)	Dr. and Mrs. Justin Kraner (Milton H. Meyerhardt Fund)	MR. AND MRS. STEVE RUDOY (Birth of Child) (Sadie R. Koplal Fund)		Mr. and Mrs. Sam Langsdorf (Otolaryngology Fund)	
Mr. and Mrs. Paul Berman	Mr. and Mrs. H. M. Talcoff			Mr. and Mrs. Lawton Levy (Edna Peterson Fund)	
Mrs. Sol Meyer (Cancer Research Fund)	Mr. and Mrs. Percy Tucker	Mr. Allan Koplal		Mr. and Mrs. Willard L. Levy	
Mrs. David N. Grosberg (Edna Malen Scholarship Fund)		Mr. Jacob Koplal		Mr. and Mrs. Louis R. Putzel (Helen and Henry Putzel Fund)	
Mr. and Mrs. Paul Berman				Mr. and Mrs. Earl Susman	
Mrs. Sol Meyer (Cancer Research Fund)				Mr. and Mrs. Frank P. Wolff	
Mrs. David N. Grosberg (Edna Malen Scholarship Fund)					DR. BEN SENTURIA
Mr. and Mrs. Paul Berman				Mr. Herbert Senturia (Otolaryngology Fund)	
Mrs. Sol Meyer (Cancer Research Fund)				MR. AND MRS. JEROME SESLEN (Their Marriage)	
Mrs. David N. Grosberg (Edna Malen Scholarship Fund)				Mrs. Joel Malen (Edna Malen Scholarship Fund)	
Mr. and Mrs. Paul Berman					HY SHAPIRO (Speedy Recovery)
Mrs. Sol Meyer (Cancer Research Fund)				Dr. and Mrs. William A. Marmor	
Mrs. David N. Grosberg (Edna Malen Scholarship Fund)					ANN SHEAR (Recovery)
Mr. and Mrs. Paul Berman				Mrs. Rose Yaker	

DONOR	IN HONOR OF	DONOR	IN HONOR OF	DONOR	IN HONOR OF
	EDWIN SHIFRIN (Special Birthday) (Ben L. Shifrin Fund)		MRS. LOUIS STEIN (75th Birthday)	Mr. and Mrs. Ronald Prince Mr. and Mrs. Frank P. Wolff	MRS. MILTON TUCKER
Mrs. Hymen Shifrin Mr. and Mrs. Murray Schneider	STELLA SIEGFRIED (Birthday)	Mr. and Mrs. Carl Glaser, Jr. (H. Lister Tuholske Fund)	ARTHUR STILLMAN (65th Birthday)	Mr. and Mrs. Carl Pass	BERNIE TUREEN (Recovery)
Mrs. Rose Yaker	IDA SILVERBERG (Speedy Recovery)	Mr. and Mrs. Arthur Bierman	GRACE STILLMAN (90th Birthday)	Miss Pearl Goldstein Mrs. Louis White	MARK TURKEN (Speedy Recovery)
Mr. and Mrs. Herman Israel	FRANK SIMON (Speedy Recovery)	Mr. and Mrs. Arthur Bierman Mr. and Mrs. Norman Bierman	MR. AND MRS. ALBERT STIX (Wedding Anniversary)		DR. HERMAN TURNER (Special Birthday)
Mr. and Mrs. Herman Israel	JULIAN SIMON (Happy Thanksgiving and Year)	Mr. and Mrs. Meyer K. Weil	DR. ARTHUR E. STRAUSS (Birthday)	Mr. and Mrs. David Moulton	DAVID VICTOR (Worshipful Master Installation)
Mrs. Ira Simon (Ira and Herbert Simon Fund)	JULIAN SIMON (Recovery)	Dr. and Mrs. Joseph M. Orenstein (Elsie Probst-Harry Koplal Fund)	MRS. LOUIS STRAUSS (80th Birthday)	Mr. and Mrs. Stanley Lentin	CHARLES WERNER (80th Birthday)
Mrs. Raymond Freed Mrs. Ben L. Goldberg Mrs. Joel Malen (Edna Malen Scholarship Fund)	MILDRED SIMON (Happy Thanksgiving and Year)	Mrs. Harry Agris	MR. AND MRS. EARL SUSMAN (Birth of Grandchild)	Mrs. M. O. Birk (Harry Tenenbaum Fund)	MR. AND MRS. KEN WILDE (Mother's Recovery)
Mrs. Bernie A. Ross (Bernie A. Ross Fund)		Mr. and Mrs. Tobias Lewin (Edna Peterson Fund)	MR. AND MRS. ADOLPH SZOLD (50th Wedding Anniversary)	Mr. and Mrs. Moe Schwartz	FRANK WOLFF (Special Birthday)
Mrs. Samuel I. Sievers Mrs. Ira Simon (Ira and Herbert Simon Fund)	MILDRED SIMON (Happy Thanksgiving and Year)		MRS. BUNNY TABACHNICK (Recovery)	Dr. and Mrs. Melvin B. Kirstein Mr. and Mrs. Morton L. Meyer and Children (Edna Peterson Fund)	
Mrs. Ira Simon (Ira and Herbert Simon Fund)	MILDRED SIMON (Recovery)	Mr. and Mrs. Morris Huber (Edna Peterson Fund)	MRS. EMIL TAMM	Mrs. Isadore Carl Middleman (The "Middy" Fund)	SAUL WOLFF (70th Birthday)
Mrs. Joel Malen (Edna Malen Scholarship Fund)	MRS. SAM SIMON (Birthday)	Mr. and Mrs. Paul Ullman (Emil Tamm Fund)	MRS. HARRY TENENBAUM (Special Birthday) (Harry Tenenbaum Fund -Unless otherwise noted)	Mr. and Mrs. Albert I. Stix Mr. and Mrs. Louis Westheimer Mr. and Mrs. Charles Yalem	
Mrs. Bernie A. Ross (Bernie A. Ross Fund)		Mrs. Albert Aloe Mr. and Mrs. Edward Greensfelder Mr. and Mrs. Sam Langsdorf Mr. and Mrs. Louis R. Putzel (Helen and Henry Putzel Fund)		Mr. and Mrs. Irwin R. Harris Miss Paula M. Leonard	DR. AND MRS. KENNETH WOOLSEY (Wedding Anniversary)
Mrs. Ira Simon (Ira and Herbert Simon Fund)		Mr. and Mrs. Robert Rosenheim Mrs. Louis G. Rothschild Dr. and Mrs. Llewellyn Sale, Jr. Mr. and Mrs. Paul B. Steinberg (Milton Price Fund)		Mrs. Joel Malen (Edna Malen Scholarship Fund)	MRS. SIDNEY ZIEDMAN (Birthday)
Mrs. Ralph Weil Mrs. Helen Wolff (Helen and Walter Wolff Fund)	PHILLIP SINCOFF (Recovery) (Sadye Mathes Fund)	Mr. and Mrs. Edward Turner Mr. and Mrs. John S. Wolff	MRS. HARRY TENENBAUM (Speedy Recovery)	Mr. and Mrs. Jeff Ziedman (Marilyn Shevitz Fund)	MRS. DOLLY ZIGLER (Recovery)
Mr. Nathan Mathes Mr. and Mrs. Joseph Steinbach	DR. RICHARD SISSON (Special Birthday) (Ben L. Shifrin Fund)	Mr. and Mrs. Paul B. Steinberg (Milton Price Fund)	MR. AND MRS. JEROME TESSLER (25th Wedding Anniversary) (Sadie R. Koplal Fund)	Mr. and Mrs. Ernest Herrmann Mr. and Mrs. Paul D. Krantzberg (Dr. Max Myer Fund)	DONATION
Mrs. Lilly Ann Abraham Mr. and Mrs. Semon Frelich Mr. and Mrs. Richard Marx Mr. and Mrs. Morton L. Meyer Mr. and Mrs. Murray Schneider Mrs. Hymen Shifrin Mr. and Mrs. Marvin Simon	MRS. ARTHUR SPRUNG (Recovery)	Mr. Allan Koplal Mr. Jacob Koplal	MR. AND MRS. HANS TEUTSCH (50th Wedding Anniversary) (Helen and Henry Putzel Fund)	Mr. Mark Margolies (Carol Kaufman Fund)	
Dr. and Mrs. Harold Joseph	MAE STANGLE (Speedy Recovery)	Mrs. Gretel Kahn Mr. and Mrs. Fritz Mann	MRS. MARTIN THAL (Birthday)	Mrs. Barbara F. Plasse (Home Care Fund)	
Mr. Max Barnholtz	HYMAN STEIN (Speedy Recovery)	Mrs. Harry Agris	MRS. MILTON TUCKER (Special Birthday)	Mr. Joseph J. Senturia (Rebecca Senturia Fund)	
Mr. and Mrs. Irving Schiffman (Heart Research Fund)		Mr. and Mrs. Harry W. Loeb (Benjamin M. Loeb Fund)		Mrs. Ida P. Stokes (Mabel and Simon Frank Fund)	TRIBUTE CARDS
				Mr. and Mrs. William B. Bierman (Harold M. Zager Fund)	
				Mr. and Mrs. Arthur B. Hermelin (Dr. Samuel D. Soule Fund)	
				Mrs. Ann Loomstein Mrs. Louis Salomon Mrs. Violet Sigoloff (Marilyn Shevitz Fund)	
				Mr. and Mrs. Joseph Silverstein (Dorothy P. Jasper Fund)	
				Mr. and Mrs. David R. Smith	



216

Additional postage required to mail individual copies.

216

THE JEWISH HOSPITAL OF ST. LOUIS

216 SOUTH KINGSHIGHWAY • ST. LOUIS, MISSOURI 63110

Non-Profit Organization

U. S. POSTAGE
PAID

ST. LOUIS, MO.
PERMIT NO. 2376

05901
MR. WALTER W. WALKER
WASH. U. SCHOOL MED. LIBRARY
4580 SCOTT
ST. LOUIS, MO. 63110

Address Correction Requested
Return Postage Guaranteed