



GEORGE HORNE, Ph.G., (second from left), director, pharmacy department, and Phillip Bassin (far right), assistant director of The Hospital, are shown receiving a plaque from representatives of E. R. Squibb & Sons, for more than 2 million prescriptions filled. Also pictured are W. D. Mottar, Jr., (left) special hospital representative, and Phillip M. Sullivan, manager of the St. Louis Division of E. R. Squibb.

Plaque Salutes 2 Million Rx

The Pharmacy Department of Jewish Hospital was awarded a plaque from E. R. Squibb & Sons, designating more than two million prescriptions filled. The plaque measures 11 inches wide and 15 inches high, with an inscription engraved on a silvered plate, and pewter mortar and pestle which have a satin finish.

George Horne, Ph.G., is director of the pharmacy, and can remember when the department consisted of one registered pharmacist.

Now there are four pharmacists, two clerk typists and one messenger who keep the 18 nursing divisions supplied with 120 items on the floor as well as specified medication.

"Everything is actually quadruple-checked by another pharmacist other than the one who filled the prescription," Mr. Horne said. The policy of the pharmacy department is:

1. The preparation and dispensing of all drugs and Rx required by the hospital and the patients, both inpatient and outpatient.
2. To purchase all drugs and pharmaceutical items to be used in the hospital.
3. To maintain a current literature file, U.S.P., N.F., Dispensatory and associated medical books which will enable the pharmacy to give information to the medical staff and nursing departments.
4. To maintain the proper forms to conform with federal, state and city regulations.

According to law, all prescriptions are held and kept five years. For the past eight years, more than 1,500,000 inpatient orders have been filled.

Franz U. Steinberg, M.D., is chairman of the Pharmacy and Therapeutics Committee; Phillip Bassin, secretary; and includes

members George Horne, Ph.G., Benard C. Adler, M.D., Edward J. Berger, M.D., Jack Hartstein, M.D., Theodore Merrims, M.D., William Shieber, M.D., and Alvin Wenneker, M.D.

"The pharmacy and therapeutics committee is an advisory (Continued on page 2, column 2)

Hospital Installs Computer

David A. Gee, executive director, has recently announced that the hospital has installed an electronic data processing system. (E.D.P.) The report of a hospital administrative committee said, "If the Jewish Hospital is to remain a leader in the field, it must include the use of electronic data computers in its program."

An IBM 1440 has been installed in the business office of the hospital. At present all in-patient bills, accounts receivable and outpatient records are being processed. Programming of the payroll has been completed, and programming of accounts payable and investing will begin shortly.

Future Plans

Future plans for the computer include use by a wide variety of hospital departments. They will make use of the system as they can be planned and programmed. Eventually the medical record, clinic, laboratory, surgery and research departments will utilize the equipment.

A recent article in *Business Week* points out the basis for the (Continued on page 2, column 2)

Shoenberg Grants \$100,000 to Hospital

A gift of \$100,000 was donated recently to Jewish Hospital by the Shoenberg Foundation, Inc., it was announced by Joseph F. Ruwitch, president, board of directors.

In making the announcement, Mr. Ruwitch indicated that the contribution has been designated as an unrestricted gift for the hospital.

"We are deeply grateful for this fine contribution to the ongoing programs at Jewish Hospital," Mr. Ruwitch said.

"This gift is typical of the high ideals and community spirit of the Shoenberg family. Moses Shoenberg was one of the men who contributed funds to build the original hospital, and his son and grandsons have carried on this tradition of civic concern."

Nursing Interest

Margaret Loh Evaluates the Role of Nurses

The role of the professional nurse in a hospital setting is changing, according to Margaret Loh, new director of nursing at the Jewish Hospital. It is changing because of the increased demand for nursing services, the introduction of auxiliary help in patient care areas, and the impetus of public desire for increased health teaching and interest in the preventive aspect of disease.

"The registered nurse of today needs, not only to be a good practitioner of nursing, but endowed with the ability to teach others how to give this nursing care," Miss Loh said. "The term 'nurse shortage' is a misnomer since we have more nurses today than ever before, which still does not begin to meet the demand for nursing service. Nursing leaders throughout the country, have, for many years, been attempting to overcome this problem," she added.

Junior College Program

One such solution was the two year Junior College program. It began as a pilot study at Columbia University and has now spread through the country. Such a program permits the education of the registered nurse to be a shorter period of time than the traditional hospital school program. With three accredited nursing programs today it will be the task of nursing leaders to choose the most capable of producing the type and quality of nurses to meet the demands of society.

"Another change in nursing is the introduction of the clinical specialist," Miss Loh continued.

"Through advanced education and experience, she would be a nursing expert in a specialized field of patient care. She would coordinate all nursing procedures for each of her patients into a total patient care plan. In addition, she would help to teach ancillary personnel the techniques and knowledge necessary

The Shoenberg family has long had an interest in Jewish Hospital activities. In 1929, the Moses Shoenberg School of Nursing was dedicated at 306 South Kingshighway. A gift from Mr. Shoenberg's widow, Dollie and his only son, Sydney M. made possible the construction of a nurses' residence and school of education.

In addition to many other outstanding gifts to Jewish Hospital in past years, the Shoenberg Foundation purchased a second residence for nurses at 4949 Forest Park Boulevard in 1959. This dormitory will continue to be used in conjunction with the main residence until construction of an addition is completed by September 1966.

Sydney M. Shoenberg, still an active member of the community, is a vice-president and director of the May Company Department Stores which his father, Moses, helped to found. In addition, he is a director of the First National Bank and the St. Louis Union Trust, a director of CIT Corporation of New York, and former director of the YMHA.

Community Participation

Two of Mr. Shoenberg's sons, Sydney M., Jr. and John, serve on the Jewish Hospital Board of Directors. John Shoenberg was president of the board from 1958 to 1963 and is now a Life Member of the board.

A third son, Robert, is vice-chairman of the Red Cross.

The three brothers are associated with their father in the investment firm of Sydney M. Shoenberg and Company, located in the Boatman's National Bank Building.

for them to give satisfactory care to such patients."

She indicated that educational programs have changed in their philosophy, objectives and length. Today stress is placed upon treating the total patient — not only his physical illness, but the sociological and psychological aspects of his life that may affect him and his best rehabilitation to the community.

"There's a new trend for men (Continued on page 8, column 2)

Neighborhood Youth Corps To Work In The Hospital

Jewish Hospital will be participating in the Neighborhood Youth Corps In-School Program and the Neighborhood Youth Corps Out-of-School Program.

The In-School Program provides a work training program for boys and girls between ages 16-21 who are currently enrolled in school. These boys and girls have been identified as persons in need of financial support to remain in school. They can work a maximum of 12 hours per week, after school and on weekends.

The Out-of-School Program provides work training for youth between ages 16-21. This program is designed for boys and

girls from low income families who have dropped out of school or graduated from high school but have been unable to find employment. These persons can work a maximum of 32 hours per week. The Out-of-School group would be available during any hours.

Youths are selected and paid by the Youth Corps. They receive counsel and guidance from specialists with the Corps. As a participating agency, The Hospital would provide work and supervision. Work will be available for regular routine assignments, and proper control and supervision available in the best interest of the youth and The Hospital.



MISS LAVERA RYDER, director of nursing education, answers questions from two of the 97 new nursing students. They are two members of the largest class at the School of Nursing at The Jewish Hospital.

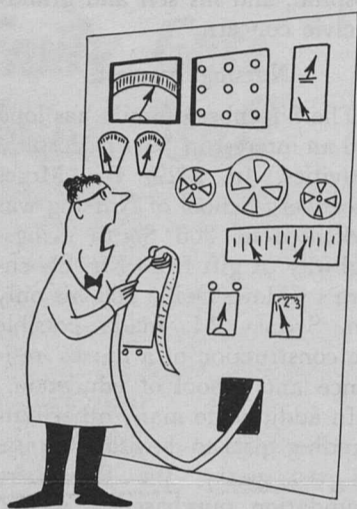
COMPUTER

(Continued from page 1)

growing use of computers in hospitals.

"Even the sale of a computer or other data processing systems to the hospital business office is regarded as an entering wedge for real medical use of electronics. When a hospital gets its first computer for keeping office records, it seems a long way from the operating room, but it's really only a small jump . . . The progress of electronics in medicine shows up best when you look at the industry in terms of use.

"This means in terms of uses as diagnosis, therapy, surgery, analysis and research. Electronic Data Processing cuts right across the field, but in two specific areas, analysis and research, it's really moving fast now."



SANDOR HREBEK

*What do you mean,
you don't think?*



David A. Gee, executive director, has been appointed to serve as a member of the Committee on Rehabilitation of the American Hospital Assn. and a representative to the Joint Committee of the American Hospital Assn. and the American Occupational Therapy Assn. for one year terms, beginning September, 1965.

Mr. Gee delivered two papers on September 23 in Chicago, Ill., at the American Hospital Assn. Institute on Hospital-Based Coordinated Home Care. One speech concerned the organization and administrative features of a coordinated Home Care Program; the other was on the subject of financing of home care programs.

He also presented a series of slides on home care rehabilitation developed by the Jewish Hospital Home Care Training Center.

James O. Hepner, Ph.D., associate director of the Jewish Hospital, spoke on a panel for a joint meeting of the Missouri and Illinois Associations of Medical Record Librarians held September 23 and 24. The panel, "Current Trends in Hospital Planning; The Role of the Medical Librarian in the Hospital of the Future," concluded that librarians should be relieved of some clerical duties, make greater use of computers and spend more time in committee work with physicians, evaluating medical documents.

Mrs. Marta Porth, A.R.T., associate medical record librarian was a member on the panel which conducted a session on "Correspondence Course for Medical Record Personnel." She passed the accreditation examination given September 10, 1965, by the American Association of Medical Record Librarians.

Miss Loretta W. Moore, R.R.L., associate medical record librarian, was one of three delegates representing the Missouri Association of Medical Record Librarians at the Annual Meeting of the American Association of Medical Record Librarians held October 10-14 in Cleveland, Ohio.

PHARMACY AWARD

(Continued from page 1)

committee of the medical staff, which represents the official, organizational line of communication and liaison between the medical staff and the pharmacy department. Its purpose, stated broadly, is to consider all matters related to the handling or use of drugs in the hospital. It is composed of the chief pharmacist and physicians selected under the guidance of the medical staff. This committee is one aspect of medical staff as a whole, and its recommendations are subject to medical staff approval."

(The above paragraph was taken from *Mirror to Hospital Pharmacy* by Francke, Latiolais, Francke & Ho, American Society of Hospital Pharmacists.)

decided that enough bowlers affiliated with the Jewish Hospital were playing on separate teams in the league to have a team of their own. Mr. Jaquier thought of the team name, "Kingshighwaymen."

Members include the three men above as well as Marcy Goldstein, M.D., Vernon Spradling, manager of the business office; and Robert Hickok, administrative coordinator of the department of rehabilitation.

Boris Axelrod Wins Golf Title

Boris Axelrod, recently recognized for his direction of the dietary department of The Hospital, won the over-all low net crown in the annual fall tournament of the St. Louis Seniors Golf Assn., held at Lockhaven Country Club in Alton, Ill. Mr. Axelrod, with a 10-stroke handicap, had a low net of 69. Since he had won a title, Mr. Axelrod was not eligible for other honors in the 50-54 age class.

Kingshighwaymen Bowlers Lead Group Totals

Six "Kingshighwaymen" have formed a Wednesday night bowling team which has the highest cumulative team score (1020) of any group in the medical-dental league.

Stanley Lang, Ph.D., captain of the team, said that the "Kingshighwaymen" team was formed last spring when he, Sam Frankel, Ph.D., and Armand F. Jaquier, director of building services, de-

STATE CAREER BEGINS FOR HOSPITAL LIBRARIAN

by CAROL REHG

Globe-Democrat Staff Writer

When Mrs. Mark (Evelyn) Whitlock was installed recently as president-elect of the Missouri Association of Medical Record Librarians she touched the first rung of a statewide career ladder which has absorbed her professional interests over a span of 15 years.

The rung of the ladder might have been reached earlier except for private-life interruptions "to marry the boy next door" who is now a research bio-chemist at Washington University and to have three boys and a girl, ages 4 to 11.

Many Other Duties

Characteristically, at the time Mrs. Whitlock became president-elect of MAMRL, she is engaged in full-time duties as director of the medical record department at Jewish Hospital and is also beginning "part-time" community service as PTA president of Hamilton Branch School.

Mrs. Whitlock is also treasurer of The Elleardsville Credit Unit which her father founded years ago to serve the community around Homer G. Phillips hospital, the same hospital which honored her with an award presentation last May for "outstanding service" to the hospital.

The hurried pace which keeps her at a trim 90 pounds has never particularly bothered Mrs. Whitlock, who is simply too busy to notice she is hurrying.

The personnel record shows, however, that she's been going at a fast pace for some time.

She has worked in the medical record departments of the Barnes hospital group and Jewish hospital since 1951 and has attended both St. Louis and Washington universities.

On "Temporary Leave"

She is on "temporary leave" from Washington University studies one semester in order to devote more time to MAMRL and to her PTA duties.

The PTA job came about as the result of a suggestion she made that was not popular at first hearing.

"I recommended the meetings be held at night, since 50 per cent of the parents are working parents and could not attend day meetings," she said.

"It wasn't very popular because of the added expense of keeping the building open at night."

The PTA group accepted the idea, however, and nominated her for president. Since it was her idea she decided it was only right to "follow through."

Mrs. Whitlock's ability to "follow through" is reflected in her competent capacity as director of 18 persons in the medical records department of a 523-bed institution which discharges more than 18,000 persons per year.

The medical record department houses medical records for Jewish Hospital patients dating back to 1902.



Mrs. Evelyn Whitlock

Control Center

The department serves as control center for medical reports channelled into it by staff members and attending physicians at 16 televoiced stations throughout the institution.

"The days for medical record workers to function as glorified file clerks are over" Mrs. Whitlock says.

Many of the hospital's statistical reports that were manually prepared will, in the future, emerge from the institution's recently installed computer system. Most department heads, including Mrs. Whitlock, have had special training in the new computer system.

Her department is currently in the process of designing forms that will utilize the computer system next year in a statewide program called "Operation Icepick."

Sponsored By State

This program is under sponsorship of the Missouri Health Association to determine the need for federal funds to hospitals, based on turnover of patients, transferees from other areas and a multitude of facts which would take too long and be too costly for a sizeable city hospital to figure without computer technology.

Besides getting involved in "Operation Icepick," the medical records director, together with other directors throughout the state, has been consulted in regards to a central tumor registry system for cancer patients.

The Missouri Co-operative Tumor Registry has been organized to standardize reporting formats by all hospitals on cancer patients. It will speed up exchange of information regarding cancer patients and treatments — a process that may hopefully save lives.

Monthly Report

Another service of the medical record department, which is standard operating procedure, is to publish a monthly professional services report which goes to hospital administrators. The 40-page report gives Jewish Hospital administrators a monthly statistical analysis of services rendered by the hospital.

This, in turn, helps the administration make long range plans.

Mrs. Whitlock's professional
(Continued on page 3, column 4)

28 Hospital Graduates Nursing Posts Announced

Forty-two new appointments to positions in Nursing Service, including 28 graduates of the Jewish Hospital Nursing School, were recently announced by Mrs. Virginia Reisinger, R.N., Director of Nursing Service.

Nurses who recently joined the staff are Mrs. Ruth Muegge, R.N., Administrative Assistant in Nursing Service, and Miss Emily Getz, R.N., Nursing Coordinator for Rehabilitation and Long Term Care.

Hospital Promotions

Nurses in The Hospital who have been promoted include: Miss Patricia Russo, R.N., Assistant Head Nurse, division 7 center; Miss Judith Fuchs, R.N., Head Nurse, division 5 center; Mrs. Mildred Lange, R.N., Head Nurse, post-partum on obstetrics; Miss Sharon Peadon, R.N., Head Nurse, delivery suite on obstetrics; Mrs. Mary Dana, R.N., Assistant Head Nurse, division 4 south; Mrs. Mary Bokal, R.N., Head Nurse, division 3 Steinberg; Miss Maureen Shannon, R.N., Head Nurse, division 1 south, and Mrs. Helen Brown, R.N., Assistant Head Nurse, division 1 south.

Mrs. Elaine Leech, R.N., Assistant Head Nurse, division 3, Steinberg, is new to the staff and recently promoted.

New Staff Nurses

New staff nurse appointments include these members of the 1965 graduating class of the Jewish Hospital School of Nursing: Miss

Harriet Smith, division 7 center; division 5 center: Miss Helen Garret, Miss Margaret Lindsey; Miss Peggy Kopolow, post-partum, obstetrics; for the nursery: Miss Gail Simmons, and Miss Harriet Hammons; Miss Ruth Vlasak, delivery suite; for division 4 South: Miss Marcia Groll; for division 3 Center; Miss Ruth Fischer, Miss Martha Uhring, Miss Carol Smith, Miss Mary Vanderhoof, Miss Judith Banes, and Miss Mary Wolff; division 3 Steinberg; Miss Carol Ward and Miss Nancy Carroll; division 2 Center: Miss Arlene Mosely, Miss Patricia Kelly, and Miss Donna Huit; division 2 South: Miss Kathleen Welsh, Miss Judith Betz, Miss Karen McKinney and Mrs. Mary Demos Poppachristanthou, R.N.; Miss Virginia Weidner, division 1 south; Operating Room: Miss Mary Smith, Miss Rowena Clark, Mrs. Judith Thompson and Miss Beverly Altherr.

Nurses who have come to The Hospital from other schools include: Mrs. Lou Ann Meyer, division 5 center, of the Milwaukee Hospital School of Nursing; Miss Patricia Frailey, R.N., division 4 south, Alton Memorial Hospital School of Nursing, '65; Mrs. Elaine Leech, R.N., mentioned earlier, assistant head nurse, division 3 Steinberg, from Riverside Hospital School of Nursing, Toledo, Ohio; and Mrs. Janet Littlefield, R.N., division 2 south, Missouri Baptist Hospital School of Nursing.

Jewish Hospital Medical Staff

FOUR HOSPITAL DOCTORS presented papers at the 13th Annual Meeting for the American College of Obstetricians and Gynecologists, District VII, on October 4-6, in Gatlinburg, Tenn.

David Rothman, M.D., presented two papers, "Psychogenic Factors in Habitual Abortion," for Obstetrical nurses at the meeting and "Emotional Aspects of Infertility and Abortion," to the doctors.

Samuel Soule, M.D., spoke on "Choice of Anesthesia in Obstetrics."

Phillip Jan Goldstein, M.D., presented "Experiences with Amniotic Fluid Spectrophotometry in a General Hospital," which was written by Drs. Goldstein, Daniel Rosenstein, M.D., and Gordon Bloomberg, M.D.

Dr. Bert Y. Glassberg's article, "Since Malachi," was published in the September issue of the PTA Magazine, the official publication of the National Congress of Parents and Teachers. The article was used in conjunction with a

study on the facets of youth today.

A grant of \$4,800 has been awarded to Dr. Lawrence K. Halpern, director, division of dermatology, Jewish Hospital, and associate clinical professor of medicine, Washington University School of Medicine.

Funds were made available by the Schering Corporation to study certain aspects of absorption of "griseofulvin," an internal medication used in treating certain types of fungus infection (ringworm) of the hair, skin and nails.

Dr. Calvin H. Weiss, director, department of dentistry, recently presented a paper, "Dental Care for the Retarded Patient," at the Institute on Retardation held in Kansas City, Mo., and sponsored by the Division of Public Health for the State of Missouri. More than 200 persons attended the Institute.

Dr. Marvin Rosecan presented the paper, "Radio-Active Iodine and Body Radiation Effects in the Treatment of Hyperthyroid-



WORK CONTINUED in limited space at the Bar Harbor Laboratory: (from left to right) Joe Ruwitch, Jr., Andrew Martin, Ben Mayes, Ralph Graff, M.D., and Morton D. Pareira, M.D.

St. Louisans Work In Bar Harbor

Five St. Louis men with a mission worked elbow to elbow this summer in the crowded laboratory of one of the world's outstanding biological scientists in Bar Harbor, Maine. Two surgeons, two senior medical students, and a laboratory technician are all affiliated with The Hospital and Washington University Medical Center. They studied immunogenetics of tissue transplantation under the guidance of Dr. George D. Snell, senior staff scientist at The Jackson Laboratory and an authority on the science of transplantation.

Working at the world's largest center of mammalian genetics were: Morton D. Pareira, M.D., chief of surgery at Jewish Hospital and professor of surgery at Washington University School of Medicine; Ralph Graff, M.D., postdoctoral fellow at The Jackson Laboratory who will return to Jewish Hospital as an associate surgeon on Dr. Pareira's staff; Joe

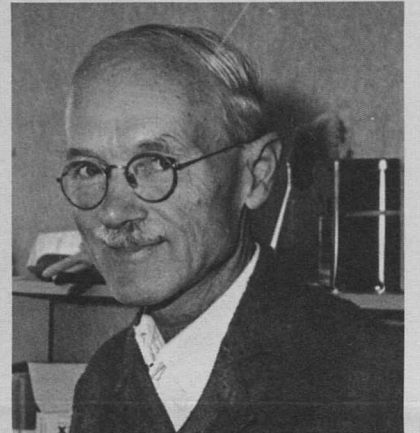
Ruwitch, Jr. and Ben Mayes, senior medical students at Washington U. School of Medicine; and Andrew Martin, a technician in the surgical laboratories of Jewish Hospital.

Dr. Dan Moore worked on related research at The Hospital. The barrier to the successful grafting of tissue and organs between human beings who are not identical twins is a genetic one. Dr. Snell has been working at The Jackson Laboratory for more than 20 years to analyze in inbred strains of mice the particular genes responsible for the acceptance or rejection of transplanted tissue.

Working with Dr. Snell's inbred strains, Drs. Graff and Pareira exercised their surgical skill in as many as 50 miniature operations a day, grafting skin between mice which differ in some instances by only one gene.

Before they left Bar Harbor they had transferred tiny patches of skin between white and black mice on more than 5,000 cases,

observed the rejection and acceptance rates of the grafts and analyzed the results.



Dr. George B. Snell

The St. Louis surgeons will put their new knowledge and findings to work in the surgical research laboratories of The Hospital.

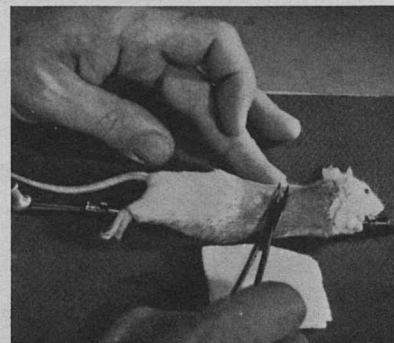
The medical students are writing up their research projects for presentation at the Washington U. School of Medicine.

Andy Martin, who spent the summer enlarging an already formidable store of laboratory techniques useful in the study of immunology, returned to Jewish Hospital to work under Drs. Pareira, Graff, and Dan Moore.

What kind of summer was it for the five packed into a laboratory built for two?

Dr. Pareira had this to say: "In two years we hope to move into the new nine-story Yalem Research Laboratories at Jewish Hospital. Space won't be a problem there, but in Dr. Snell's laboratory, despite its limited size, we had an opportunity to be found no place else in the world."

"At the very least we have a two-year head start on the work we'll be doing on the transplantation problem at Jewish Hospital."



Technique of Skin Grafting

MRS. WHITLOCK

(Continued from page 2)

outlook towards her job and its importance to the hospital is mirrored in the MRL's national credo that they serve as "a vital link" between headquarters and the practising physician.

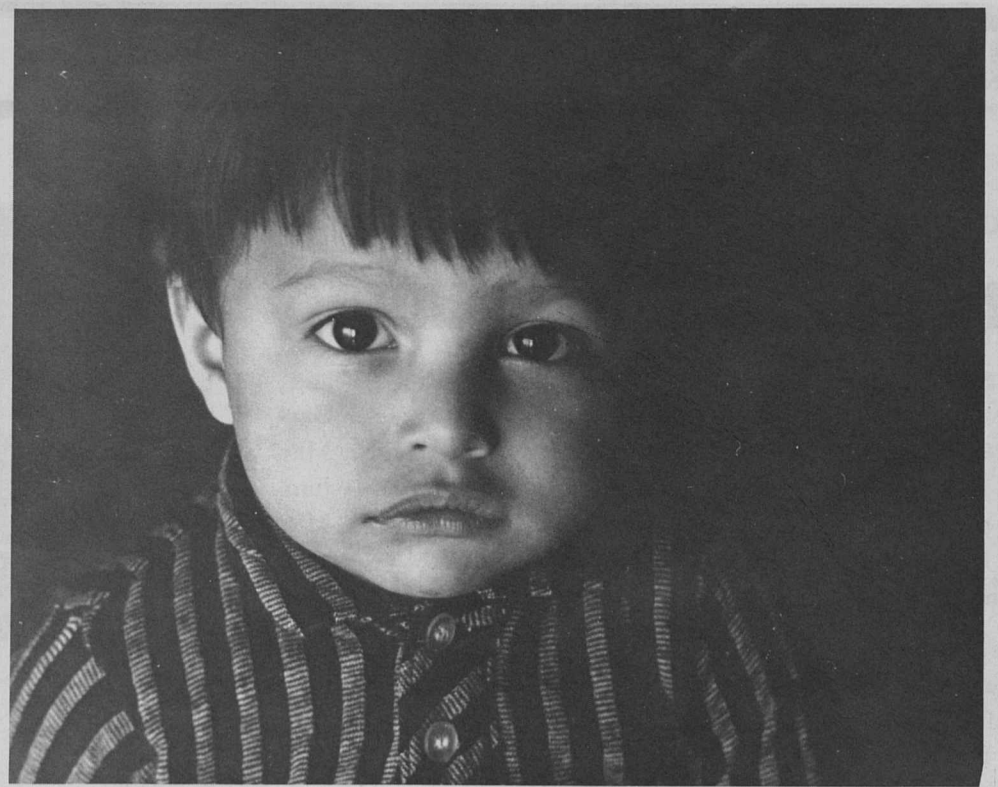
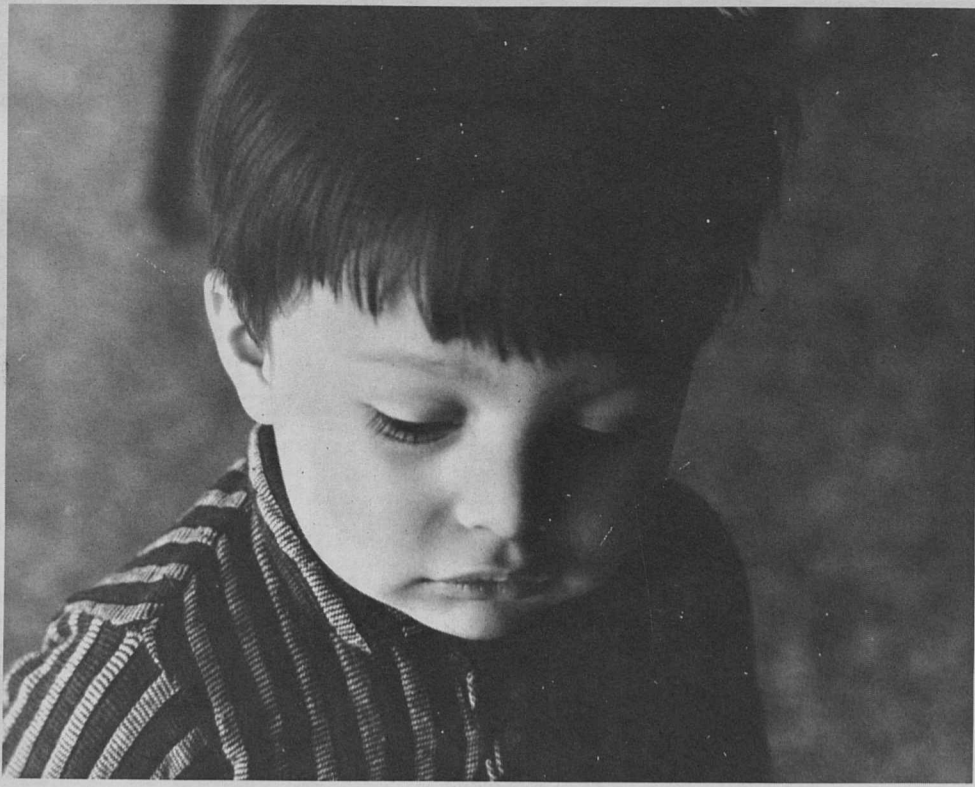
They are "full partners in the design, planning and conduct of medical research studies. It is their duty to help develop better ways of recording, appraising and gathering information.

The national goal is not easy but the woman who has tackled it at the statewide level is not accustomed to easy success.

VOL. 14, No. 8 OCT., 1965

216 is published monthly by the Public Relations Department of THE JEWISH HOSPITAL OF ST. LOUIS

JOSEPH F. RUWITCH, *President*
DAVID A. GEE, *executive director*
MAX APPEL, *director of resources and public information*
BARBARA JANES, *director of public relations*
TWINK STERN, *Editor*



Hold out the hope they are lo



Open your heart
Reach out your





ooking for . . .

rt,
r hand --

for the United Fund



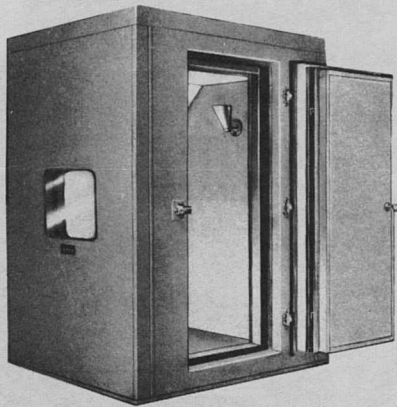
photographs by Twink Stern

October, 1965

Contributions to Jewish Hospital Funds

DONOR	IN MEMORY OF
Mr. and Mrs. Leo Aberson	HATTIE ABERSON
Mr. and Mrs. Gerald N. Harris (Oscar Brand Memorial Fund)	CECYL ARONSTEIN
Mrs. Ida Arshat	SAM ARSHT
Mr. and Mrs. Clarence E. David and Family (Sunnyvale, California)	WALTER J. BARTH (Cardio Vascular Research Fund)
Marie and Bernard Tucker (Westwood, California)	BETTIE N. BEATUS
Mr. and Mrs. Richard Marx	ISADORE BEILENSEN
Mr. and Mrs. Meyer Loomstein	JEWELL BELISLE
Geraldine, Madeline, Olga, Viola and Henrietta (Alvin D. Goldman Research Fund)	SHELDON BELLOW
Mr. and Mrs. Jon A. Roos	SISTER OF DR. AND MRS. HARRY BERKIN
Mr. and Mrs. Bernard Mitleider	ISADOR BISTROW
Mr. and Mrs. Harry A. Bobroff Mrs. Sol Kaiser	Mr. and Mrs. Michael Levinson
Mr. and Mrs. Michael Levinson	DOROTHY LEE BLOCH
Mr. and Mrs. Max A. Horwitz	ANNA BLOCH
Mr. and Mrs. David Lentzner	FANNY BLOCH
Mr. and Mrs. Herbert F. Lewis (Bernard Lieberman Memorial Fund)	Mr. and Mrs. Abe Lieberman (Bernard Lieberman Memorial Fund)
Mr. and Mrs. M. L. Schneider	JULIUS M. BLOCH
Mr. and Mrs. David Lentzner	HERMAN R. BROOKS
Mr. and Mrs. Sid H. Dubinsky (Irven Dubinsky Memorial Fund)	DORA CARLIE
Dr. and Mrs. Joseph J. Gitt Dr. and Mrs. Kenneth O. Green Dr. and Mrs. M. E. Green Mr. and Mrs. Louis Karpf Mr. and Mrs. Willard Orenstein Mr. and Mrs. Harry Zimmerman	FLORA COHEN
Mr. and Mrs. Israel Heifetz	MRS. JEROME COHEN
Mr. and Mrs. Louis Karpf	LOUIS COHEN
Dr. and Mrs. Julius Elson	PAULINE COHEN
Mr. and Mrs. Joseph Hartman	WALTER COHEN
Mr. and Mrs. Leo Aberson Mr. and Mrs. Milton Fox	PAULA GOLDA COMENSKY
Mr. and Mrs. Max A. Horwitz	RUTH COOK
Juanita C. Pinkley (Beth El Assistance Fund)	HARRY CORESWET
Mr. and Mrs. Edward Wittcoff	EMMETT COSTELLO
Mrs. Sol Kaiser	JOHN E. CURBY
Mr. and Mrs. Henry J. Scherck	BEN DAVIDSON
Mr. and Mrs. Benjamin L. Slosberg	JOSEPHINE DIAMANT
Mr. and Mrs. Max A. Horwitz	HARRY DODEK
Mr. and Mrs. Edward Wittcoff	WALTER DORR
Mrs. Julian B. Cohn	IRVEN DUBINSKY (Irven Dubinsky Memorial Fund)
Mr. and Mrs. R. Tanenbaum	FRANK ELKINS
Mrs. Edward Block (Dr. Llewellyn Sale Memorial Fund)	Nat L. Horwitz
Mr. and Mrs. Harold Hoffman	ALEX ELSON
Mr. and Mrs. Harry W. Loeb	
Mr. and Mrs. Eli P. Schwartz (Sadye Mathes Special Fund)	JEANETTE ESTAQUE
Dr. and Mrs. Robert S. Weinhaus	PEARL FALB
Mrs. Sidney Cohen	EMANUEL FIHN
Mr. and Mrs. Max A. Horwitz	
Mr. and Mrs. Leo Epstein Mr. and Mrs. Arthur Fischman Mrs. Raymond M. Freed Mr. and Mrs. Max A. Horwitz Mr. and Mrs. Sidney Katz (Elsie Probststein — Harry Koplar Brace Fund)	PAUL FLEISCHER
Mr. and Mrs. Edwin Lewis, Jr. Mr. and Mrs. Herbert F. Lewis (Bernard Lieberman Memorial Fund)	
Mr. and Mrs. Emil Probe Mr. and Mrs. Walter Reese Mr. and Mrs. Jacob N. Sapin Mr. and Mrs. James L. Watel Mr. and Mrs. Louis Lander	
Mr. and Mrs. H. S. Iglauer Mrs. Kate Jacoby Alyce M. Prusan	MOTHER OF LARRY FOY
Mrs. Otto Salomon	MILTON FRANK (Milton Frank Memorial Fund)
Alfred Silverman	EMMA FRIEDMAN
Mrs. Harry Goldberg Mr. and Mrs. Albert Goodman	LILLIAN FRIEDMAN
Dr. and Mrs. D. G. Cariss Mr. and Mrs. Fred H. Haug Mr. and Mrs. Frank Leventhal	ANNA PIAN GALLANT
Mrs. Mollie Berie (Julius and Sara Ginsberg Cancer Research and Therapy Fund)	
Mr. and Mrs. Marvin Deutsch Dr. and Mrs. Milton H. Jasper Mr. and Mrs. Alvin N. Lasky Mr. and Mrs. Herbert F. Lewis (Bernard Lieberman Memorial Fund)	
Mrs. William Molasky (Jerome Molasky Memorial Fund)	
Mr. and Mrs. Hanford G. Sher Mr. and Mrs. Stanley H. Wielansky Mr. and Mrs. William Wolff Mr. and Mrs. Ben F. Yedlin (Julius and Sara Ginsberg Cancer Research and Therapy Fund)	

DONOR	IN MEMORY OF
Mr. and Mrs. Jack Lyss	MRS. A. FIXMAN
Mr. and Mrs. Jack Lyss	ISADORE AND REBECCA GELLMAN
Mrs. Ella O. Cohn Mr. and Mrs. Morris H. Rosenthal Mr. and Mrs. Edward F. Schweich Mr. and Mrs. I. Henry Schweich Mr. and Mrs. Ben L. Shifrin Mrs. Ralph Weil	CORINNE M. GOLDMAN
Mr. and Mrs. Milton Fox Mr. and Mrs. Arthur Loomstein Mr. and Mrs. Meyer Loomstein Mr. and Mrs. Jerome Marks Mrs. Jerome Molasky (Jerome Molasky Memorial Fund)	SAM GOLDSTEIN
Mr. and Mrs. Ben Samuels Mr. and Mrs. Hanford G. Sher Mr. and Mrs. Earl R. Silver Mr. and Mrs. Gustav A. Vittert Mr. and Mrs. Stanley H. Wielansky	MRS. ALEX GOODMAN
Mr. and Mrs. Michael B. Barken	LOUIS B. GOODMAN
Mr. and Mrs. Ben Finer	GEORGE J. GORDON
Mr. and Mrs. Morton M. Hartz (Irven Dubinsky Memorial Fund)	DORA KATZ HARRIS
Dr. and Mrs. Milton H. Jasper Mr. and Mrs. Meyer Loomstein James W. Robinson (Irven Dubinsky Memorial Fund)	GERTRUDE HASENJAEGER
Mr. and Mrs. Leslie Roth Mr. and Mrs. Jerome Shainman	
Mr. and Mrs. Sam Brodsky Mr. and Mrs. Herman Glick Clara Mandel Sara Torgove Mrs. Ada Wesson	
The Faculty of The Jewish Hospital School of Nursing Dr. Carl J. Heifetz Edna E. Peterson Scholarship Fund)	
Mr. and Mrs. Harry Allen Miss Dorothy Block Mr. and Mrs. Mel Feist	SAMUEL HIKEN
Mr. and Mrs. Ralph M. Friedman Mr. and Mrs. Jere Glass Mrs. Leo Gottlieb Mr. and Mrs. Peter H. Husch Mr. and Mrs. David Lentzner Mr. and Mrs. Harry E. Milton (Edna E. Peterson Scholarship Fund)	JENNIE HOFFMAN
Mr. and Mrs. David R. Nieman Mr. and Mrs. David S. Rosenfeld Mr. and Mrs. Samuel C. Sachs Dr. and Mrs. Hyman R. Senturia Mr. and Mrs. Sanford Shifrin Mr. and Mrs. Saul Spielberg Dr. and Mrs. Robert S. Weinhaus	WILLIAM B. HORK
Mrs. Pauline Finn Mr. and Mrs. Louis Gelber (Sadye Mathes Special Fund)	MANUEL HORWITZ
Mr. and Mrs. Max A. Horwitz	LENA HYATT
Mr. and Mrs. David Stellar Mr. and Mrs. Harold P. Yalem	SOL HYMAN
Mr. and Mrs. Robert S. Chautin	ELLA GLASER JACOBS
Mr. and Mrs. Edward Wittcoff	SOL KAISER
Mr. and Mrs. Arthur Fischman Dr. and Mrs. Milton H. Jasper	ROSE KALMANOWITZ
Mrs. Sol Kaiser and Children	JOE KATZ
Mrs. Louis Weinstein	LOUIS KOHN
Richard E. Turner	SARAH KOHN
Esther Kohn Joseph Kohn	WILLIAM KOHN
Esther Kohn Joseph Kohn	DAVID J. KOHNER
Mr. and Mrs. Jerome B. Cohen Edward L. Bakewell, Sr. Mr. and Mrs. Lester Busch David H. Cohen Mr. and Mrs. Sidney Cohen Mrs. Jacob H. Epstein Mr. and Mrs. Arthur Fischman Mrs. Lillian Franklin Mr. and Mrs. Irwin Gittelman (Irven Dubinsky Memorial Fund)	
Mr. and Mrs. Herman Glick Mrs. Elsie S. Glik Mr. and Mrs. Samuel A. Goldblatt Mrs. Bess Grodsky (Heart Research) Mr. and Mrs. Joseph Hartman Mr. and Mrs. Frank Josephson	



A SOUND PROOF hearing test booth for testing of newborn in clinical and research purposes is needed. The cost is approximately \$2,000.

CONTRIBUTIONS RECEIVED ARE USED FOR RESEARCH, APPLIANCES FOR CLINIC PATIENTS, NEW EQUIPMENT, AND OTHER WORTHY UNDERTAKINGS, SPONSORED BY THE JEWISH HOSPITAL AUXILIARY.

THE FOLLOWING ARE CONTRIBUTIONS RECEIVED DURING PERIOD AUGUST 1, 1965 TO SEPTEMBER 1, 1965. ANY CONTRIBUTION RECEIVED AFTER SEPTEMBER 1 WILL BE LISTED IN THE NEXT 216.

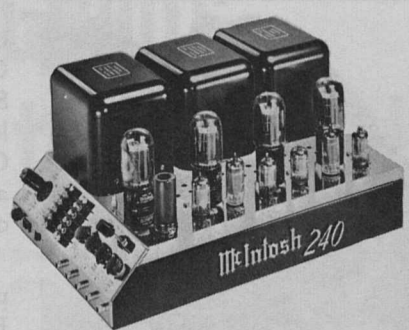
(CONTRIBUTIONS TO THIS FUND MAY BE MADE BY SENDING CHECKS, PAYABLE TO THE JEWISH HOSPITAL TRIBUTE FUND, TO MRS. HENRY H. STERN, 6310 WATERMAN AVENUE, ST. LOUIS 30, OF MRS. JOSEPH F. RUWITCH, 102 LAKE FOREST, ST. LOUIS 17).

DONOR	IN MEMORY OF	DONOR	IN MEMORY OF
Mr. and Mrs. Max Kleban Dr. and Mrs. Fred S. Levin Mr. and Mrs. Herbert F. Lewis (Bernard Lieberman Memorial Fund)	ROSE SMALL	Mr. and Mrs. Edward Wittcoff	LOUIS SMITH
Mr. and Mrs. Stephen H. Loeb Mr. and Mrs. Melvin J. Mednikow Mr. and Mrs. Harry E. Milton (Edna E. Peterson Scholarship Fund)	RICHARD SMITH	Mr. and Mrs. Moe Schwartz (Diabetes Research Fund)	HARRY H. SOFFER
Mrs. Frieda S. Novoson (Irven Dubinsky Memorial Fund)	HERMAN SPIVACK	Mr. and Mrs. Morton M. Hartz (Irven Dubinsky Memorial Fund)	SISTER OF LOUIS SOSLAND
Mr. and Mrs. Eugene M. Pearlman Mr. and Mrs. Kenneth Poslosky Mr. and Mrs. Walter Reese Jerome E. Seidel (Elsie Probststein - Harry Koplar Brace Fund)	EMERGENCY ROOM, AARON WALDHEIM CLINICS AND HEALTH SERVICE PERSONNEL OF JEWISH HOSPITAL	Mr. and Mrs. Jack Desbecker	
Maurice E. Seidel (Elsie Probststein - Harry Koplar Brace Fund)	Dr. and Mrs. Morton Green Mr. and Mrs. Martin Landauer Mr. and Mrs. Martin Landis Mr. and Mrs. Morris Schneider (Heart Research)		
Carroll C. Shelton David S. Sher Mr. and Mrs. Hanford G. Sher Mr. and Mrs. Kay F. Sherman Mrs. Vera C. Silverman Mrs. Harry Spitzer Mr. and Mrs. Jerry Spitzer Mrs. Morris Stone Mr. and Mrs. Irvin Susman Mr. and Mrs. Louis Susman Mr. and Mrs. Tom Tucker Mrs. A. Tuholske Mr. and Mrs. Barney Wides Mr. and Mrs. William Wolff Mr. and Mrs. Roger F. Ugalde	MURRAY STEINBERG		
Max Levis	Mr. and Mrs. Alvin A. Abramson (Milton Frank Memorial Fund)		
	Mr. and Mrs. J. B. Charak David H. Cohen Mrs. Ella O. Cohn Mr. and Mrs. Harry A. Collinger Mr. and Mrs. Franklin Eiseman (Edna E. Peterson Scholarship Fund)		
	Mr. and Mrs. Irven Dubinsky (Irven Dubinsky Memorial Fund)		
	Mr. and Mrs. Moke Epstein Mr. and Mrs. Frank Gellman Dr. and Mrs. Joseph J. Gitt Mr. and Mrs. Alvin D. Goldstein Mr. and Mrs. Irvin S. Harris (Beth-El Assistance Fund)		
	Mr. and Mrs. Lawrence Krumm Mr. and Mrs. Abe Lewin (Audiology Department)		
	Mr. and Mrs. Bram J. Lewin (Sadye Mathes Special Fund)		
	Mr. and Mrs. Al S. Loeb Mr. and Mrs. Irving Londy Mr. and Mrs. Monte Lopata (Cancer Research)		
	Mr. and Mrs. Ralph Lowenbaum Dr. and Mrs. Milton H. Meyerhardt Mr. and Mrs. Harry E. Milton (Edna E. Peterson Scholarship Fund)		
	Mrs. Frieda S. Novoson (Irven Dubinsky Memorial Fund)		
	Ann Olian Mr. and Mrs. Joseph F. Ruwitch Mr. and Mrs. Samuel C. Sachs Mr. and Mrs. Arthur A. Scharff, Jr. Mr. and Mrs. Edward F. Schweich Mr. and Mrs. Harry I. Sloan (Edna E. Peterson Scholarship Fund)		
	Mr. and Mrs. Harry Smith Mr. and Mrs. Charles J. Steiner Mr. and Mrs. John D. Taylor Mrs. Martha Frances Turbeville Mr. and Mrs. Sol Wolff		
	ERIC STERNBERG		
	Mr. and Mrs. Jon A. Roos (Edna E. Peterson Scholarship Fund)		
	KATHARINA STRAUB		
	Miss Avanelle Boyce Mrs. Sue Bryson The Faculty of the Jewish Hospital School of Nursing Mrs. Louise Geiger Mrs. Alice P. Gresham Mrs. Mae Hendel Mrs. Margaret Moyer Miss Christine Reilly Mrs. Rita Rutledge		
	MOTHER OF MRS. J. H. SWARTCHILD		
	Mr. and Mrs. Theodore R. Samuels		
	HARRY TENENBAUM (Birthday) (Harry Tenenbaum Memorial Fund)		
	Mrs. Leslie Carvalho Mr. and Mrs. Charles Rice Mrs. Harry Tenenbaum		
	JAMES THOMECEK		
	Richard E. Turner		
	TOM TIERNEY		
	Mr. and Mrs. Arthur Loomstein		
	DELLA L. WEIL		
	Mr. Frances L. Greenfield Mr. and Mrs. R. Morrell Schmitz Mrs. Sam Weil		
	MOTHER OF ALICE WIENER		
	Mrs. Jerome Molasky (Jerome Molasky Memorial Fund)		
	ROSE WOLFF		
	Mr. and Mrs. Albert Goodman		
	SARAH WOLFF		
	Dr. Lawrence M. Aronberg J. L. Damron Dr. and Mrs. Milton H. Jasper James W. Robinson (Irven Dubinsky Memorial Fund)		
	Mr. and Mrs. Jacob N. Sapin Mr. and Mrs. Benjamin L. Slosberg		
	WILBERT L. WULF (Surgical Rehabilitation of Hearing Fund)		
	Mr. and Mrs. David A. Gee Department of Otolaryngology (Audiology Fund)		
	MR. ZEMLYN		
	Mr. and Mrs. Archie Glick		
	SADIE R. KOPLAR		
	Mr. and Mrs. Earl A. Alexander Mrs. Joseph Blath Mr. and Mrs. Edward J. Boonschaft Mr. and Mrs. George Glass Mr. and Mrs. Max A. Horwitz Dr. and Mrs. Milton H. Jasper Mr. and Mrs. Sidney Katz (Elsie Probststein — Harry Koplar Brace Fund)		
	Mrs. Minnie Kenner Mr. and Mrs. Jack Levy Mr. and Mrs. David Litvag Irwin J. Meyer (Elsie Probststein — Harry Koplar Brace Fund)		
	Dr. and Mrs. Jacob G. Probststein (Elsie Probststein — Harry Koplar Brace Fund)		
	Mr. and Mrs. Norman Probststein (Elsie Probststein — Harry Koplar Brace Fund)		
	Mr. and Mrs. Milton Sharp Mr. and Mrs. Harry Sherman Mr. and Mrs. Sylvan W. Stein Mr. and Mrs. Tom Tucker Mr. and Mrs. Sylvan Wolf		
	SARAH KORNBLUM		
	Mr. and Mrs. Perry Mehlman		

DONOR **IN MEMORY OF**
 Mr. and Mrs. David Lentzner EDNA BLOCK KOWALSKY
 (Home Care Department) ERWIN KRESS
 (Wheelchair, Walker and Cane Donated by the Following)
 Mrs. David Davis
 Mrs. Joseph Henschel
 Mrs. David Turken
HARRY LANDER
 Mrs. Sarah Goodman
 Mr. and Mrs. Max A. Horwitz
 Dr. and Mrs. Milton H. Jasper
 Mrs. William Molasky
 (Jerome Molasky Memorial Fund)
 Mr. and Mrs. Ben Samuels
THOMAS LANE
 The Jewish Hospital School of Nursing Faculty
 (Edna E. Peterson Scholarship Fund)
LILLIAN LEVINE
 Mr. and Mrs. Louis Gelber
 (Sadye Mathes Special Fund)
 Mr. and Mrs. Albert S. Kopf
 (Sadye Mathes Special Fund)
 Mr. and Mrs. Herbert F. Lewis
 (Bernard Lieberman Memorial Fund)
 Mr. and Mrs. Nathan Mathes
 (Sadye Mathes Special Fund)
 Mr. and Mrs. Emil Probe
 Mr. and Mrs. Louis J. Ross
 Dr. and Mrs. A. A. Schwartz
 (Sadye Mathes Special Fund)
RICHARD LINZER
 Mr. and Mrs. Michael Fadem
BENJAMIN M. LOEB
 Mrs. Constance G. Baer
 Mr. and Mrs. David Baron
 Mrs. Alvin L. Bauman
 Mr. and Mrs. Norman Bierman
 David J. Biller
 Mr. and Mrs. James T. Blair, III
 Mr. and Mrs. Maurice J. Freeman
 Mr. and Mrs. Henry L. Freund
 Mr. and Mrs. Morris Horwitz
 Mr. and Mrs. Sylvan H. Jacobson
 Dr. and Mrs. Milton H. Jasper
 Louis W. Joss
 Mr. and Mrs. Fredrick H. Lewis
 Mrs. Edwin B. Meissner
 Mr. and Mrs. Edwin B. Meissner, Jr.
 Mr. and Mrs. Harry E. Milton
 (Edna E. Peterson Scholarship Fund)
 Mr. and Mrs. Victor Packman
 Mr. and Mrs. Robert L. Rosenheim
 Mr. and Mrs. Harold Seidel
 Norman H. Spitzer
 Richard E. Turner
 Mr. and Mrs. James L. Watel
CLARA LOEB
 (Harry Tenenbaum Memorial Fund)
 Mr. and Mrs. M. O. Birk
 Mr. and Mrs. Howard W. Phillips
RITA LOEB
 Mr. and Mrs. William Klein
CHARLES LONDE
 Mr. and Mrs. Ben Finer (Heart Research)
 Mr. and Mrs. Morris Londe
 Mr. and Mrs. Leon Tannenbaum (Heart Research)
SOPHIE MACK
 Mr. and Mrs. Howard Pattiz
CASTLE MARCUS
 Mr. and Mrs. Phillip Morris
LENA MARCUS
 Mr. and Mrs. Ben Shanfeld
JACKIE SUE MAROULIS LIVER RESEARCH FUND
 Blanche Kovsky
 Mrs. D. Sonenchein
MELVIN MARK
 Mr. and Mrs. James T. Blair, III
 Mr. and Mrs. Harry S. Iglauer
 Mr. and Mrs. Theodore Komen
 Mr. and Mrs. Irving Londy
 Mrs. Louis G. Rothschild
 Mr. and Mrs. Joseph F. Ruwitch
 Mr. and Mrs. Lester Seasongood
 Mr. and Mrs. A. Ernest Stein
FRIEDA MAY
 Mr. and Mrs. Willy Hermann
NATHAN MICHELSON
 Mr. and Mrs. Morton M. Hartz
 (Irven Dubinsky Memorial Fund)
ARTHUR MILLER
 Mr. and Mrs. Arthur M. Berland
LOUIS MITLEIDER
 Mr. and Mrs. Mayo Gottliebson
 Mr. and Mrs. Jon A. Roos
 Molly Ruden
 Mrs. Sam Schiffer
 Mrs. Anna Spitzer
 Mr. and Mrs. Jerry Spitzer
 Mr. and Mrs. Morley D. Winters
JEROME MOLASKY
 (Jerome Molasky Memorial Fund)
 Allied News Company, Inc.
 Mr. and Mrs. Harold Appel and Family
 Mr. and Mrs. Harold Becker
 Mrs. Ida Bernstein
 Mr. and Mrs. James T. Blair, III
 Mr. and Mrs. Meyer Blocher and Son
 Steven Scott Bukstein
 Commanding Officers and Associates —
 St. Louis County Police Department
 Nancy Cohen
 Mrs. Meyer Cohen
 Mr. and Mrs. Hyman H. Cytron
 Rick Darrow
 Mrs. Ben Ellis
 Mr. and Mrs. Albert Felberbaum
 Henry and Anne Garfinkle Foundation, Inc.
 Mr. and Mrs. Joseph Glik
 Mr. and Mrs. Ben Goldenhearsh
 Mr. and Mrs. Courtney A. Gould
 Frank Greenfield
 Mr. and Mrs. Louis Greenfield
 Mr. and Mrs. Lester J. Handelman
 Mr. and Mrs. Alex Hogue
 Morris and Janet Hoffman
 Mr. and Mrs. Sidney Jacobs
 Dr. and Mrs. Milton H. Jasper
 Dr. and Mrs. Michael M. Karl
 Mr. and Mrs. Harold Koplar
 (Sam - Jeannette Koplar Rehabilitation and
 Brace Fund)
 Yvonne Kunin
 Mr. and Mrs. Alvin Lasky
 Mr. and Mrs. Sol Leberman
 Mr. and Mrs. Jack Levitt
 Mr. and Mrs. Arthur Loomstein
 Mr. and Mrs. Meyer Loomstein
 Mr. and Mrs. Nathan Lurie
 Martin News Agency, Inc. — Dallas, Texas
 Farrel Miller
 Mr. and Mrs. Victor Packman
 Pierce News Company Employees
 Mr. and Mrs. Harry Poslosky
 Mr. and Mrs. Dave Routman
 Joseph M. Routman
 Mr. and Mrs. Ellis Rubenstein
 Mr. and Mrs. Marvin Saks
 Ron Sacks
 Mr. and Mrs. Norman Sandberg
 Mr. and Mrs. Earl R. Silver
 Mr. and Mrs. Benjamin L. Slosberg
 Mr. and Mrs. Charles Sopher
 Norman H. Spitzer
 Mr. and Mrs. Louis Supic
 Mr. and Mrs. Charles Steen
 Marion Steen
 Mr. and Mrs. Louis Susman
 Dr. and Mrs. Calvin Weiss
 Mr. and Mrs. Stanley H. Wielansky
 Ronald A. Wilson
 Mr. and Mrs. William Wolff
NELSON MOROSE
 Mr. and Mrs. Robert Bernstein
 (Jerome Molasky Memorial Fund)
MORRIS OISHAN
 Mr. and Mrs. Leo Aberson
ABE OLSHINE
 Mr. and Mrs. Edward Wittcoff

DONOR **IN MEMORY OF**
 Theodore R. Samuels FATHER OF MRS. ROY PENDELTON
 Mrs. Doreen Broudy and Family PAUL PECHERSKY
 ALFRED W. PETCHAFT
 Dr. and Mrs. Milton H. Jasper
 Mr. and Mrs. Kay F. Sherman
 Mr. and Mrs. Sylvan W. Stein
MORRIS RABINOWITZ
 Hank S. Iglauer
 Mr. and Mrs. Murray Kleinfeld
SIDNEY G. RAIN
 Mr. and Mrs. Israel Heifetz
FRIEDA RICHTER
 Mr. and Mrs. Harry Galkin
ABRAHAM RIFKIN
 Mr. and Mrs. Jack A. Cohn
 Dr. and Mrs. Harry Cutler and Sons
 Dr. and Mrs. Joseph J. Gitt
 Mr. and Mrs. Archie Glick
 Mr. and Mrs. Harold Hoffman
 Mr. and Mrs. Louis Horwitz
 Mr. and Mrs. Marvin Kaneinfeld
 Dr. and Mrs. William A. Marmor
 Mr. and Mrs. Perry Mehlmán
 Mr. and Mrs. Gene M. Schneider
 (Oscar Brand Memorial Fund)
 Mr. and Mrs. Ralph Sherberg
 Mr. and Mrs. Lester Sherman
 Dr. and Mrs. Jerome I. Simon
 Mr. and Mrs. Leonard I. Smith
 Mr. and Mrs. Gustav A. Vittet
 Mr. and Mrs. Abraham S. Weinreb
FREDERICK ROE
 Mrs. Eva Milius Goldsmith
MARY ROSENBERG
 Mr. and Mrs. Max A. Horwitz
SISTER OF MRS. ROSENTRER
 Mr. and Mrs. Martin Landis
JEANNETTE WOLFF ROTENBERG
 Dr. Lawrence M. Aronberg
DONOR **IN HONOR OF**
 Mr. and Mrs. Jules Biegelsen ABE FREED (80th Birthday)
LOUIS STRAUSS (75th Birthday)
 Mrs. Ralph Weil
MRS. RALPH WEIL (70th Birthday)
 Mrs. Henry Rice
 Mrs. Harry Sandperl
 Mrs. Ben L. Shifrin
 Mr. and Mrs. Sydney M. Shoenberg
CHARLES K. BERGER (60th Birthday)
 Mr. and Mrs. Ralph Lowenbaum
MRS. HENRY BRY (60th Birthday)
 Dr. and Mrs. Clarence T. Eckert
MAURICE L. HIRSCH (60th Birthday)
 Mrs. Constance G. Baer
 Mr. and Mrs. I. M. Kay
 Dr. and Mrs. Melvin B. Kirsstein
 Mr. and Mrs. Harold Koplar (Sam-Jeannette Koplar
 Rehabilitation and Brace Fund)
 Mr. and Mrs. Sydney M. Shoenberg, Jr.
JACK R. SMITH (60th Birthday)
 Mr. and Mrs. Jack E. Edlin
 Mr. and Mrs. Walter K. Hamburg
 Mr. and Mrs. Harry E. Milton
 (Edna E. Peterson Scholarship Fund)
MRS. IRVIN BETTMAN, JR. (55th Birthday)
 Mr. and Mrs. Earl Susman
MRS. JOSEPH F. RUWITCH (50th Birthday)
 Mrs. Ben F. Jacobs
M. ERWIN BRY, JR. (40th Birthday)
 Mr. and Mrs. William Collinger
 (Frimeth - Felix S. Dreyer Memorial Fund)
 Mrs. Carol Fihn
 (Frimeth - Felix S. Dreyer Memorial Fund)
 Mr. and Mrs. Joseph Glik
 Mr. and Mrs. Walter K. Hamburg
 Mr. and Mrs. Harold Lewin
 Mr. and Mrs. Louis R. Putzel
 Mr. and Mrs. James L. Schwab
 Mr. and Mrs. Robert L. Shifrin
 (Frimeth - Felix S. Dreyer Memorial Fund)
MRS. ELLA O. COHN (Birthday)
 Mrs. Jessie Harris
MILTON FRANKEL (Birthday)
 Dr. and Mrs. Robert Karsh
 (Joseph D. Karsh Memorial Library Fund)
MRS. LEWIS E. LITTMANN (Birthday)
 Mr. and Mrs. Sidney E. Langsam
 Mrs. Oscar S. Marx
MRS. KAY F. SHERMAN (Birthday)
 Mr. and Mrs. Harry E. Milton
 (Edna E. Peterson Scholarship Fund)
SYDNEY M. SHOENBERG (Birthday)
 Mr. and Mrs. Morris H. Rosenthal
 Mrs. Mark C. Steinberg
 Mrs. Ralph Weil
MR. AND MRS. SAM FALK
 (50th Wedding Anniversary)
 Mrs. Julian B. Cohn
 Dr. and Mrs. Milton H. Meyerhardt
 Mrs. Ralph Weil
MR. AND MRS. LUCIEN KRONE
 (50th Wedding Anniversary)
 Dr. and Mrs. Milton H. Meyerhardt
MR. AND MRS. JOSEPH GLASER
 (45th Wedding Anniversary)
 Mr. and Mrs. Robert C. Lesser
 Mrs. Edward E. Scharff
 Mr. and Mrs. Richard K. Weil
MR. AND MRS. MAJOR B. EINSTEIN
 (40th Wedding Anniversary)
 Mrs. Lewis Bettman
 (Lewis Bettman Memorial Fund)
 Mr. and Mrs. Robert C. Lesser
 Mr. and Mrs. Edwin Levis, Jr.
MR. AND MRS. CHARLES WEISS
 (35th Wedding Anniversary)
 Mr. and Mrs. Harold Lewin
MR. AND MRS. SYLVAN AGATSTEIN
 (25th Wedding Anniversary)
 Mr. and Mrs. Robert L. Shifrin
 Mr. and Mrs. Earl Susman
DR. AND MRS. MICHAEL M. KARL
 (25th Wedding Anniversary)
 Dr. and Mrs. Norman W. Drey
MR. AND MRS. IRVIN FOX
 (22nd Wedding Anniversary)
 Mr. and Mrs. Perry Mehlmán
MR. AND MRS. JESSE MYER
 (20th Wedding Anniversary)
 Dr. and Mrs. Clarence T. Eckert
 Mr. and Mrs. Henry H. Stern
MR. AND MRS. MORRIS GLASER
 (Wedding Anniversary)
 Mr. and Mrs. Joseph Glaser, Jr.
MRS. LEONARD COHN (Recovery)
 Mr. and Mrs. Carl Pass
MORRIS COOPER (Recovery)
 (Jerome Molasky Memorial Fund)
 Mr. and Mrs. Allan Molasky
 Mrs. Jerome Molasky
 Mrs. William Molasky
CHARLES CRANE (Recovery)
 Mr. and Mrs. Sam Schechter
HAROLD DUBINSKY (Recovery)
 Mr. and Mrs. Sid H. Dubinsky
 (Irven Dubinsky Memorial Fund)
 Rose Friedman
 (Rebecca Senturia Memorial Library Fund)
ROBERT EPSTEIN (Recovery)
 Mrs. Josephine Herzfeld
BEN FADEM (Recovery)
 Mr. and Mrs. Michael Fadem

DONOR **IN HONOR OF**
 M. MICHAEL FISHMAN (Recovery)
 Mr. and Mrs. Sidney Dawidoff
 (Bernard Lieberman Memorial Fund)
 Mr. and Mrs. Melvin Friedman
 Mr. and Mrs. Meyer Jaffe
 Mrs. Sid Siteman
 Mr. and Mrs. Saul Spielberg
MRS. MORRIS GLASER (Recovery)
 Dr. and Mrs. Milton H. Jasper
 Mr. and Mrs. Dan R. Susman
AL GOLDMAN (Recovery)
 Mr. and Mrs. Ben Recht
DAVID GROSBURG (Recovery)
 Mr. and Mrs. Ralph M. Friedman
MRS. BERTHA KRAVITZ (Recovery)
 Mrs. William Molasky
 (Jerome Molasky Memorial Fund)
 Mr. and Mrs. Gene M. Schneider
 (Oscar Brand Memorial Fund)
SAM LADD (Recovery)
 Mr. and Mrs. Sid H. Dubinsky
 (Irven Dubinsky Memorial Fund)
 Mrs. Irven Dubinsky
 (Irven Dubinsky Memorial Fund)
DR. JOSEPH LEDERMAN (Recovery)
 Mr. and Mrs. Samuel A. Goldblatt
BERNARD LITTMANN (Recovery)
 Mr. and Mrs. Sidney E. Langsam
SAM MICHELSON (Recovery)
 Mr. and Mrs. Melvin Friedman
HENRY NEWSTEAD (Recovery)
 Mr. and Mrs. Martin Landauer
MRS. DONALD ROSS (Recovery)
 Mrs. G. B. Barken
 Mr. and Mrs. Samuel A. Goldblatt
 Mr. and Mrs. Ralph M. Friedman
MRS. JOE SCHNEIDER (Recovery)
 Mr. and Mrs. Sidney Dawidoff
 (Bernard Lieberman Memorial Fund)
 Mr. and Mrs. Joseph H. Fischman
MRS. RICHARD A. SHONINGER (Recovery)
 Deedie Seidel
HERMAN STRIFLING (Recovery)
 Mr. and Mrs. Meyer Jaffe
MR. WIENER (Recovery)
 Mr. and Mrs. Ralph M. Friedman
MRS. ELY E. YAWITZ (Recovery)
 Mr. and Mrs. Max A. Horwitz
LEE CRONBACH (Return From Hospital)
 Mrs. Oscar S. Marx
MR. AND MRS. R. W. HOOKER, JR.
 (Their Marriage)
 Mr. and Mrs. Arthur Fischman
MR. AND MRS. MEYER PANKIEWER
 Mr. and Mrs. Edwin G. Shifrin
THOMAS FISCHER - MARILYN DAVIDSON
 (Their Forthcoming Marriage)
 Mrs. Paul S. Sigán
MR. AND MRS. HAROLD BARNETT
 (New Home)
 Mr. and Mrs. Samuel A. Goldblatt
MR. AND MRS. PAUL TANDLER
 (New Home)
 Mr. and Mrs. Samuel A. Goldblatt
MR. AND MRS. JACK HARRIS
 (First Grand-Child)
 Mr. and Mrs. Arthur M. Berland
MR. AND MRS. TED KRISTAL
 (Birth of Grand Daughter)
 Mr. and Mrs. Milton S. Cohen
MR. AND MRS. SAM ROSENBLATT
 (New Grand Son)
 Dr. and Mrs. Milton H. Jasper
MR. AND MRS. SAM WASSERMAN
 (Harmon's Graduation)
 Mr. and Mrs. Edward J. Boonshaft

DONOR **IN HONOR OF**
 MARCIA GROLL (Graduation from Jewish
 Hospital School of Nursing)
 Mr. and Mrs. Samuel A. Goldblatt
EDNA E. PETERSON (Many Years of
 Fine Service to Jewish Hospital
 (Edna E. Peterson Scholarship Fund)
 Mr. and Mrs. Tobias Lewin
 Mr. and Mrs. Morton L. Meyer
CHILD PSYCHIATRIC DIVISION
 Mrs. Sam Golman
 (Towards payment of bill for indigent child)
 Georgia Ames
KARSH LIBRARY FUND

AN MC240 STEREO Power Amplifier
 for improvement of hearing test
 facilities with particular emphasis
 on hearing aid evaluation is needed.
 The cost is about \$300.
GREETING CARD DONORS
 (Research Institute of
 Jewish Hospital of St. Louis)
 Adjustable Engineers Cap Company —
 Hyman Metalloff
 Alexander Sales Company
 Allen Foods, Inc.
 Berger Memorial
 Mr. and Mrs. Alfred M. Brody
 Leonard Eastman — Pioneer Liquor Company
 Mr. and Mrs. J. S. Fishman
 Mrs. Ben Fox
 Dr. and Mrs. Samuel J. Freund
 Mr. and Mrs. Edward Greensfelder
 James O. Hepner, Ph.D.
 Mrs. Samuel Intrater
 Jayson Shoe Manufacturing Company, Inc.,
 Sidney S. Sigoloff
 Stanley G. Kann
 Mr. and Mrs. I. M. Kay
 Mr. and Mrs. L. M. Leipziger
 William Levitt — Certified Finance Company
 J. Lewin Bookbinding and Sample Company
 Mr. and Mrs. William Lewin
 Mr. and Mrs. Harry W. Loeb
 Max Lubin
 Herman Rindskopf, Inc. — Mrs. Norman Roth
 Mr. and Mrs. Henry P. Ruggeri, Jr.
 Mr. and Mrs. Joseph F. Ruwitch
 Mr. and Mrs. Edward F. Schweich
 Mr. and Mrs. Herman C. Seldin
 Mrs. Irving Selzer
 Mr. and Mrs. Ben Shanfeld
 Siteman Charitable Foundation — Alvin Siteman
 Dorothy S. Smith
 Howard P. Sternberg
 Gustav A. Vittet
 Meyer K. Weil Shoe Company
 Mr. and Mrs. Edward Wittcoff
 Theodore T. Wurmb

Auxiliary Sells Holiday Cards

The Jewish Hospital Auxiliary is selling holiday greeting cards, white and green with a snow flake motif.

Mrs. Samuel Stern, chairman of the greeting card project, announced that the minimum donation will be:

\$20 per 100 — \$10 per 50 — \$5 per 25

The cards can be personalized at the cost of 1c each, plus a 50c set-up charge.

Each card will be imprinted with, "The purchase of this card represents a donation to the Research Institute of the Jewish Hospital of St. Louis."

Orders will be taken by Mrs. Samuel Stern, 701 Glenridge, VO 3-1574, and vice-chairman, Mrs. Burton Librach, 804 South Central, PA 1-1181. Orders can also be made through the auxiliary office at the hospital, FO 7-8080, ext. 264.

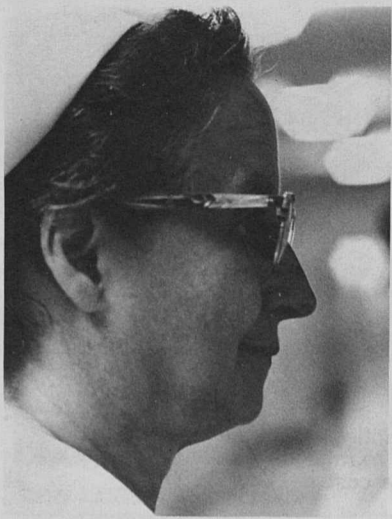
Use This Form to Make Tax Deductible Contributions: TO THE JEWISH HOSPITAL TRIBUTE FUND (FOR RESEARCH, APPLIANCES FOR CLINIC PATIENTS, AND OTHER WORTHY PROJECTS.)

Please print:
 Enclosed please find \$....., given in
 honor of.....
 memory of.....
 Kindly send card to:
 Name.....
 Address.....
 From: Name.....
 Address.....
 Please make check payable to Jewish Hospital Tribute Fund.
 Sponsored and operated by the Jewish Hospital Auxiliary
**SEND TO: Mrs. Henry H. Stern, 6310 Waterman Ave., St. Louis, Mo. 63130—
 PA 7-6310
 Mrs. Joseph F. Ruwitch, 102 Lake Forest, St. Louis, Mo. 63117—ST 1-3416**

Auxiliary Fall Meeting, Oct. 22

"The Facts on Figures," a discussion on weight problems will be combined with the volunteer awards luncheon October 22 at Westwood Country Club. The meeting begins at 1 p.m.

Dr. Stanford Wessler, physician-in-chief, will moderate the panel which will include three doctors discussing women's weight problems in terms of their own specialties.



Emily J. Getz

Emily Getz Joins Staff

Miss Emily J. Getz has been named nursing co-ordinator for the Department of Long Term Care and Rehabilitation of the hospital. She is working with Dr. Franz U. Steinberg, director of the department.

Miss Getz has had experience in public health work in addition to teaching and supervising nurses. She was trained at St. Louis City Hospital Training School for Nurses; received a bachelor of science degree in public health nursing from the University of Minnesota as well as a certificate in public nursing. She has worked at City Hospital as assistant night supervisor, instructor of medical surgery nursing and assistant supt. of nurses. For some years she was a private duty nurse. Miss Getz also worked for the St. Louis Chapter of the American Red Cross as Instructor of Volunteer Nurses Aides and for Midwestern Area of the National Red Cross as a consultant, supervisor, field representative and as assistant director of Blood Program Nursing.

She has traveled extensively the North and South American continents, Europe, Africa, the Near East and the Far East. Miss Getz attended three International Congresses of Nurses, and found the development of nursing dependent to a great extent on the general education, mores and status of the women in all countries.

Hobbies, include reading, swimming, sewing, creating hats from feathers and fabrics, and, of course, travel.

Miss Margaret Loh, director of nursing, said, "We have felt a need for this kind of person, and are very pleased to welcome Miss Getz to the staff. She will be able to make a great contribution to the program."

Dr. Conrad Sommer will discuss the "Psychological Implications of Cause and/or Effect." Dr. Samuel Soule's topic will be the "Physiological Changes in Women Causing Obesity." "The Sense and Nonsense of Dieting" will be discussed by Dr. David Kipnis.

Dr. David Kipnis received his pre-medical training at Johns Hopkins and his medical degree from the University of Maryland. He is professor of medicine at Washington University, specializing in the field of endocrinology and metabolism.

Dr. Conrad Sommers, a graduate of the University of Illinois and Chicago Institute for Psychoanalysis, with a specialization in adult and child psychiatry. He is a former director of the Illinois Society of Mental Hygiene. He presently teaches at Washington University, Chicago Institute for Psychoanalysis and Eden Theological Seminary.

Dr. Samuel Soule trained at Jewish Hospital, St. Louis Maternity and Barnes Hospital, and is a former director of the Department of Obstetrics and Gynecology at Jewish Hospital and former president of the Jewish Hospital medical staff. He is professor of clinical obstetrics and gynecology at Washington University. He will discuss psychological changes in women causing weight problems.

Dr. Stanford Wessler, moderator of the panel, is currently professor of medicine at Washington University. He is a graduate of Harvard University, and received his M.D. from New York University. He was assistant professor of medicine at Harvard University, and director of the Harvard Clinical Research Center.

He is presently director of the department of medicine at Jewish Hospital.

The volunteer awards, or "VICKI's" ceremony, according to Mrs. Don Quicksilver, program chairman, "VICKI" standing for "volunteer individual citation kudo insignia."

MISS LOH (Cont. from page 1)

in nursing", she added. "More and more high school boys are interested in a nursing education, particularly as a stepping stone into other allied fields, such as anesthesiology, and hospital administration."

Miss Loh was formerly director of nursing at Hurley Hospital in Flint, Michigan. She said that Hurley Hospital was building a nursing residence with one area just for male students.

"I interviewed a young man just out of the navy who wanted to be a nursing technician. He would be an asset to any class," she concluded with a smile.

10 years to Complete Project

Rosecan Family Work on Brass Screen



MRS. MARVIN ROSECAN and three of the four Rosecan children work on the brass screen. They are (l-r), Deborah Lee, 10, Arthur, 8, and Laurie, 12. Not pictured is Jeffrey, 13.

Ten years of patience is a long time, but Dr. and Mrs. Marvin Rosecan, 4 Spode Lane, have worked in sculpting metal and copper enamel for the first two years of this time. They are working on copper rectangular panels for a brass room divider in their new home.

"This is something we are creating ourselves for the home," Mrs. Rosecan, a former occupational therapist said. Mrs. Rosecan was graduated from the Department of Occupational Therapy of the School of Medicine at Washington University, and has been interested in craft work for many years.

"The Dutch artist Piet Mondrian inspired this style of severe angular asymmetry which is similar to the pattern for the brass screen."

"About three or four years ago we had this idea, and we began working at the People's Art Center. Now we are taking evening classes at University City High School with Simon Ybarra, an instructor there," Dr. Rosecan said.

"My wife does the careful work; I put things out in mass production."

Some of the mass production included rectangular plaques with gall stones, glass chips, coins, bladder stones, sculpting metal and brass screen which is finished on both sides and welded or brazed together. More than 50 plaques will be needed to finish the screen dividing the living and dining rooms of the home. Mrs. Rosecan is working on a copper plaque which will hold raised Hebrew numbers in sterling silver.

Dr. Rosecan is a member of the teaching staff at Jewish Hospital and assistant professor of clinical medicine at Washington University Medical school. He was the director of service at Homer G. Phillips Hospital in 1964, and has published seven papers concerning internal medicine.



Dr. Rosecan the director of service at Homer G. Phillips Hospital in 1964, and has published seven papers concerning internal medicine.

Dr. Danforth Elected Medical Center President

Dr. William Danforth, vice chancellor for medical affairs at Washington University, was recently elected president of the Washington University Medical School and Affiliated Hospitals Board.

Member hospitals of WUMSAH include Jewish, Barnes, St. Louis Children's and Barnard.

The medical school and hospitals board was formed in 1963

to develop better co-ordination between the medical school and its affiliated hospitals.

Joseph F. Ruwitch, president of the Jewish Hospital board of directors was elected vice-president of the WUMSAH board.

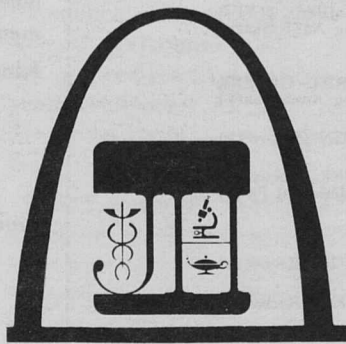
This medical complex contains 1,706 beds, two and a half million square feet of patient care, education and scientific space; and 2,860 parking places.

LETTERS TO THE EDITOR

Beginning next month the "216" will feature a "Letters to the Editor" column. Please address any pertinent information to Editor, "216", The Jewish Hospital of St. Louis, Mo. 63110.

216

THE JEWISH HOSPITAL OF ST. LOUIS
216 SOUTH KINGSHIGHWAY
ST. LOUIS, MISSOURI 63110



Form 3547 Requested

Non-Profit Organization
U. S. POSTAGE
PAID
ST. LOUIS, MO.
PERMIT NO. 2376