

Radiation Therapy Unit To Open

38 Employees

Get Awards

Employees who reached five-year milestones in their Jewish Hospital jobs in 1959 received service awards March 24 at a tea and reception in Steinberg Auditorium.

Two 35-year employees, the Misses Emma L. Garbee, radiology, and Marguerite S. Humes, business offices (see story, page 4), were among the 38 persons who received awards at the tea.

Others among the award winners:

Dr. Stanley Lang, surgery, five years; Vernon Bean, central supply, Dr. Herman T. Blumenthal, Institute of Experimental Pathology, ten years; Miss Virginia Lodes, nursing office, 15 years.

John M. Shoenberg, Jewish Hospital president, and Dr. David Littauer, executive director, presented awards. Robert Rubright was chairman of the event.

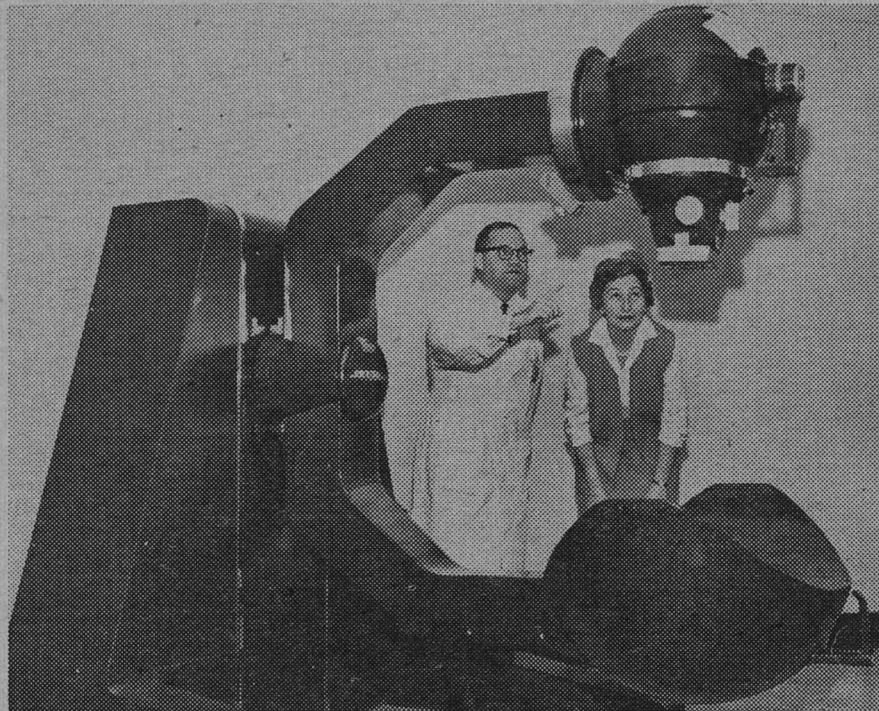
Rehab Nursing Workshop Here

Almost 100 registered nurses participated in a two-day workshop in rehabilitation nursing techniques sponsored by the rehabilitation division and nursing service in January.

Lectures and discussions on various aspects of rehabilitation nursing were presented by members of the rehabilitation and nursing staff on the first day of the workshop.

On the second day, four display teams using the latest equipment demonstrated proper care of the rehabilitation patient. With student nurses as "patients," crutch walking, self-care and self-help devices, and positioning techniques were dramatically presented to workshop participants.

Each workshop participant received a manual on rehabilitation nursing compiled by the rehabilitation and nursing service staffs. This 55-page booklet, detailing aspects of rehabilitation nursing demonstrated at the workshop, will soon be available to interested persons.



Dr. Hyman R. Senturia, director of the division of radiology, explains functions of the cobalt-60 teletherapy machine to Mrs. Harry Loeb, women's auxiliary president.

JEWISH FEDERATION DRIVE START NEARS

The 1960 Jewish Hospital campaign for the Jewish Federation will get under way March 28. The drive will continue through April. Goal for Jewish Hospital employees is \$3,700.

Last year, 92 per cent of the hospital's employees contributed \$3,080 to the drive. This year, due to rising medical costs, increased need for medical services, especially among aged persons, and increasing costs in daily operations of Federation institutions and agencies, it is necessary to set a much higher goal. Total goal for all St. Louisans in the campaign is \$1,973,641.

Charles K. Berger, general chair-

man of the campaign, will be main speaker at the first JH team captain's meeting at 2 p.m., March 25, in Steinberg auditorium.

Jewish Hospital receives about \$360,000 annually from the Federation. This money helps meet deficits in providing care for service patients in wards, the outpatient clinics and in the long-term illness division. The hospital's home care program is also supported by the Jewish Federation, as are some expenses of the departments of medicine and surgery.

Co-chairmen of the 1960 campaign at the hospital are Mrs. Fran Stovall, Miss Shirley Stoving, and Robert Rubright.

Five New Board Members Elected

Five new directors have been elected to the hospital's board of directors.

They are: J. Arthur Baer, II, vice-president in charge of merchandising and publicity, Stix, Baer & Fuller; Julius Cohen, chairman of the board, Central Hardware Company; Edwin Levis, Jr., partner, Newhard Cook and Company, investment brokers; Ben Hoffman, president, American Waste Ma-

terial Company, and Mrs. Harry Milton, former president of the hospital's women's auxiliary.

(Mrs. Milton is the current vice chairman of the American Hospital Association council on hospital auxiliaries and chairman of the Missouri Hospital Association committee on auxiliaries.)

Six other directors whose terms expired in 1960 were re-elected to serve another three-year term. They are: Norman Bierman, I. E. Goldstein, Sam C. Sachs, Herbert Schiele, Gordon Scherck and Milard A. Waldheim.

A \$35,000 Cobalt Unit is Added

A radiation therapy section, featuring a \$35,000 cobalt-60 teletherapy machine for cancer treatment, will be opened soon in a former storage area in the basement of the hospital. The Women's Auxiliary contributed \$30,000 for purchase of the machine. Cost of converting the storage area into the cobalt unit was \$115,000.

The two treatment rooms in the new nine-room suite will house the cobalt machine and a 250 KV X-ray machine for deep therapy. These two rooms are of concrete construction with walls 20 inches thick and ceilings 22 inches thick. Doors to the treatment room are heavily insulated with sheet lead and the treatment area of the room is separated by a 16-inch thick concrete wing wall.

The technician on duty will be able to watch the patient through observation windows in the wall of either treatment room while controlling both X-ray machines from the outside. The windows are five-and-a-half inches thick. The glass is heavily saturated with particles of molten lead. These huge hunks of semi-transparent material, giving the glass a brownish tint, weigh up to 200 pounds each for a small window.

According to the architectural firm designing the suite, the area had to be placed below ground level to avoid the possibility of rays penetrating the walls and projecting into occupied hospital rooms. Construction of the area was governed by Atomic Energy Commission rules.

Included in the basement suite are an isotope storage room, examination room, recovery room, office, four dressing cubicles, waiting room, and rest rooms. There is also a radiology research laboratory which will be used when the department is able to obtain necessary research equipment.

(Continued on page 2)

A recent distinguished visitor at the Jewish Hospital was Governor James T. Blair of Missouri. The occasion — arrival on Feb. 13 of James T. Blair, IV, first grandson of the governor and son of Mr. and Mrs. James T. Blair, III, of Creve Coeur. Blair, III, is a well-known golfer.

Know Your Hospital Here's A Peek At Central Supply

"An exciting day in Central Supply? They're all exciting — things go on here that don't happen to most people in their whole lives!"

The speaker was Terry Holbrook, one of four technicians who man the all-important, life-giving oxygen teams operating out of Jewish Hospital's "heart".

And "heart" is what Central Supply really is. Consider this list, part of the hospital's year-end administrative services report. From Central Supply:

- 240,385 needles cleaned, sharpened, sterilized
- 238,854 syringes cleaned, sterilized
- 164,362 pairs of gloves
- 29,540 parenteral solutions
- 6,659 oxygen service calls
- 612,901 cubic feet oxygen consumed

That's only half of the many jobs tackled on a seven-day, 24-hour basis by Central Supply.

On a visit there the other day — it's located just past the ground floor lobby on the way to Steinberg Memorial — 216 asked busy supervisor Vernon Bean to sum up what makes Central Supply tick.



It's the human factor without which Central Supply could not always be available in emergencies, he said. That factor consists of 18 workers, technicians, aides, orderlies, and six volunteers.

Their duties? Some fold dressings and bandages which are sent up on a large dumb-waiter to the operating and labor rooms. Two hundred pounds of linen per day are handled by Central Supply. Others bag and sterilize syringes, sharpen needles. One worker is constantly in attendance watching over the giant autoclaves (steam sterilizers) in which instruments are sterilized. Oxygen teams are on the go from morning to night — and sometimes all night long.

One of the department's unique features is its teaching program for oxygen therapy technicians — the only such program offered by a St. Louis hospital.

Technicians receive three to four weeks' intensive training in the operation of precision-timed respirators used in cases of complete lung failure. Supervisor Bean (who began his JH career as an orderly) serves as instructor, and remains on 24-hour call, ready to lend advice or help when an emergency arises.

"We break our necks trying to give what's needed," says Opal Rice. A Central Supply veteran of 8 years, she is a supply aide, works hard 8 hours a day, feels that the job is most satisfying.

Dr. Paul Dudley White Presents First Strauss Lecture

Dr. Paul Dudley White, internationally known heart specialist, spent a day at Jewish Hospital in early December in honor of the seventieth birthday of his long-time friend, Dr. Arthur E. Strauss of the hospital's medical staff.

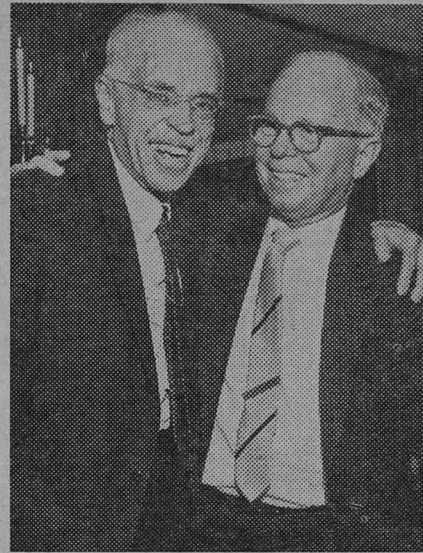
Dr. White came to St. Louis from Boston under auspices of the newly created Arthur E. Strauss Visiting Physician Fund. The fund was established for Dr. Strauss by many of his friends and former patients.

"For many years Dr. Strauss and I have been close friends," said Dr. White. "Almost everywhere I've been in this world, Arthur has been just around the corner." Both men are, of course, inveterate travelers.

The two physicians met in 1915 at Boston's Massachusetts General Hospital when Dr. Strauss was an intern and Dr. White was his chief resident. During his lecture entitled "The New Five Ages of Man," Dr. White produced slides showing electrocardiogram charts and medical reports made by Dr. Strauss as an intern.

In addition to a morning lecture, Dr. White conducted afternoon cardiology rounds.

The day ended with a stag dinner at Stan Musial and Biggie's Restaurant. After a chat with Mr. Musial and dinner, Dr. Morris Alex,



Dr. Paul Dudley White (left) greets his long-time friend, Dr. Arthur E. Strauss.

office partner of Dr. Strauss, played a tape recording of "This is your Life Arthur Strauss." The recording carried Dr. Strauss through boyhood days and among the years he served as president and secretary of the Jewish Hospital medical staff, director of the department of medicine, and physician-in-charge of the heart station. He is now consultant in medicine and cardiology at the hospital.

Additional contributions to the Strauss fund are being received in the hospital's public relations office. Checks should be made payable to the fund.

Volunteers Honored for Long Hours

An awards night for volunteers at Jewish Hospital was held March 9 at the Moses Shoenberg Memorial.

The ceremony, sponsored by the hospital's board of directors and the women's auxiliary, was followed by a reception.

At the event, 163 volunteers with at least 150 hours of service each received white bars for their uniforms. Gold charms were presented to 112 volunteer workers who have accumulated more than 500 hours.

Top award winner at the event, with 7,200 hours, was Mrs. Alfred Goldman, volunteer chairman of the hospital's gift gallery. Mrs. Elmer D. Abramson was honored for 5,000 hours, and Mrs. Gordon Scherck and Mrs. Harvey Nathanson received awards for 4,300 hours.

Joseph F. Holland, special assistant to the publisher of the *St. Louis Post-Dispatch*, was master of ceremonies. On the program were John M. Shoenberg, hospital president, David Littauer, M.D., executive director, and Mrs. Sophia Rosenkranz, director of volunteer services.

Volunteers at the hospital have worked 242,464 hours since 1955, when formal recording of hours was initiated.

Wonder Drugs Damage Ear, Audience Told

Dr. Joseph E. Hawkins was guest speaker at the fourth annual Samuel B. Westlake Memorial Lecture in Steinberg Auditorium. Dr. Hawkins, director of research in otolaryngology at New York University, spoke of possible damage to the ear caused by wonder drugs.

Among the drugs discussed, he warned that streptomycin, if used for a prolonged period, could cause damage to the inner ear, leading to a loss of control of balance.

Dr. Hawkins emphasized "the importance of much more careful laboratory testing of new antibiotics before they are approved for clinical trial."



Mrs. Sophia Rosenkranz (l.) and Mr. Joseph F. Holland congratulate Mrs. Alfred Goldman, volunteer chairman of the Gift Gallery who was honored for 7,200 hours' service, at the volunteer awards tea on March 9.

Dr. Roy Greenbaum

Is Dead At 50

Roy Greenbaum, M.D., a member of JH medical staff since 1937, died recently at the age of 50.

Dr. Greenbaum, specialist in cardiology and geriatrics, graduated from Washington University Medical School in 1934. He was part-time medical director of the Aaron Waldheim Clinics, medical director of the Jewish Home for the Aged, and part-time medical director of the hospital's long-term disease division.

He served in the United States Army from 1941 to 1945 in both Pacific and European Theatres and was discharged with the rank of major.

Dr. Greenbaum's daughter, Jerri, is a student in the JH School of Radiological Technology. He is survived by his wife and two other children.

Psychiatric Unit

Aided By Fund

The Ellen Steinberg Department of Child Psychiatry recently received \$250 from the Globe-Democrat Fund for Children, established with proceeds of the Globe's annual Old Newsboys Day.

The money will purchase a record player and special record collections designed for educational and therapeutic purposes. The player will be located in the unit's nursing station and will be connected with a loud speaker installed in the department.

"Our children respond very well to music, particularly in the enjoyment that it gives and in the way it is possible to organize a group activity around it," reports Dr. Quentin Rae Grant, the unit's clinical director.

Cobalt Unit (cont'd)

With cobalt treatment, cancer patients receive fewer radiation side reactions, such as skin changes, and receive radiation which penetrates deeper into the tissue.

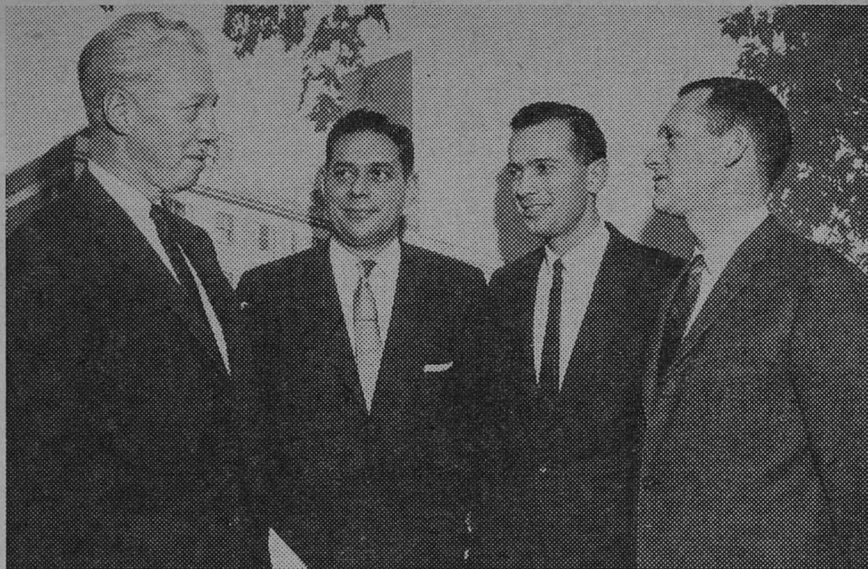
The cobalt source of the machine is a "wafer" about the size of a dime. This cobalt material can last about ten years.

Dr. Hyman Senturia, director of the division of radiology, will be in charge of the area. He will be assisted by Mrs. Doris Zahradka, both a therapy technician and registered nurse. Dr. Senturia, or another medical radiologist, will prepare the patient and Mrs. Zahradka will carry out the outline of the treatment.

Average cobalt treatment time for cancer patients is from four to six weeks — with daily three-to-four minute sessions.

The present second-floor north diagnostic X-ray area will continue to be used after the radiation therapy department is opened. Isotope treatments for patients with blood conditions will also be available on the second floor.

DR. CARL V. MOORE IS TRITT LECTURE SPEAKER



L. to R.: Dr. Carl V. Moore, Dr. Melvin L. Goldman, Dr. Robert S. Mendelsohn (resident in medicine), and Dr. Albert B. Eisenstein (director, division of medicine).

"The Metabolism of Iron" was the subject of the thirteenth annual Jack H. Tritt Memorial Lecture, given at the hospital on Thursday, February 4. Carl V. Moore, M.D., Busch Professor of Medicine and Chairman of the Department of Medicine at Washington University School of Medicine, was guest speaker.

In his lecture, Dr. Moore presented a summary of present information about the way the body uses iron, emphasizing nutritional factors.

"The average American diet con-

tains sufficient iron, except in situations where there is increased blood loss," he reported.

The human body requires a larger supply of iron during periods of growth, during pregnancy and the active years of menstruation, and at any time when there is bleeding, as from hemorrhoids or ulcers.

Dr. Melvin L. Goldman served as chairman of the 1960 Tritt lecture. Committee members were Drs. Seymour Monat, Morton D. Pareira, Sam Schneider, Albert B. Eisenstein and Alvin S. Wenneker.

Two Nursing Events Listed

Two School of Nursing activities held in early March were the annual "Nurse For A Day" program on March 5, and a capping ceremony for freshmen students on March 10.

On March 5, junior and senior high school students interested in nursing careers were guests of the school for the day. Activities included a buffet luncheon and tours of the school's classrooms and dormitory facilities.

Eighty-one school of nursing freshmen received their caps in the traditional candlelight ceremony on March 10.

Both activities were held in the Moses Shoenberg Memorial.

Physician from Chile is Visitor Here

Dr. Jaime Motlis, chief physician at the Jewish Public Polyclinic in Santiago, Chile, recently spent four weeks at Jewish Hospital on a Pan American Health Organization fellowship.

Dr. Motlis was in St. Louis primarily to study the organization and operation of our home care, long-term care and rehabilitation programs. Interested in establishing a federal geriatric agency in Chile, Dr. Motlis left to observe operations at Peter Bent Brigham Hospital, Boston, and Bellevue Hospital, New York.

A story about Dr. Motlis' visit to the hospital appeared in the *St. Louis Post-Dispatch*.

Mrs. Filliez Has A Day



After more than 31 years as a nurses' aide at the hospital, Mrs. Amelia Filliez has retired.

On her retirement day, December 20, she was honored with a private luncheon and a tea. At the tea, she received a four-piece luggage set from the hospital's Ob-Gyn physicians, a transistor radio set from friends, many of them in the nursing division, and jewelry from the housekeeping department.

Mrs. Filliez, who is now in Florida, joined the hospital in 1928 at the age of 42. She made thousands of friends among young mothers on the maternity floor by making beds, passing nourishment, and cheerfully going about her chores.

Mrs. Filliez wants to become an expert gardener in retirement. "If I have luck, I'll send you all a bouquet of flowers next summer," she said.

New Personnel Director Named

Mr. C. P. Hutchinson, new personnel director, joined Jewish Hospital's staff March 1.

A graduate of Washington University (where he obtained a B.S.B.A.), Mr. Hutchinson brings with him a background of 20 years' experience in personnel administration. In the past ten years, he has concentrated primarily on the industrial relations field.

Known as "Hutch" to his friends, this native St. Louisan resides at 122 Portland Terrace, Webster Groves, with wife Viola, son David, 14 (who, incidentally, was born at Jewish Hospital), and 11-year-old Honey, the family's pet cocker spaniel.

A man of many talents, Mr. Hutchinson speaks with special pride of a recently completed hi-fi set which he assembled and installed at home, "complete with woofers and tweeters," (whatever they are!).

His other hobbies include all types of sports (especially fishing), and photography. The latter can be verified by a look at his collection of over 7,000 color slides, product of his own camera work!

United Fund Goal Exceeded

Jewish Hospital employees contributed \$4,815 to the 1959-1960 United Fund drive, exceeding the hospital goal of \$3,400 by more than \$1,400. In 1958, JH employees contributed \$3,327 to the United Fund.

The final figures put Jewish Hospital in second place among St. Louis hospitals participating in the United Fund drive. Twenty-six hospitals ranked below Jewish Hospital in total contributions.

At the close of the drive, 26 of the 36 team captains reported that 100 per cent of the employees in their assigned areas had made either a pledge or cash donation to the United Fund. Total number of Jewish Hospital employees giving to United Fund: 1,113.

John H. Hayward, United Fund president, communicated his thanks to the hospital for its role in the campaign. "I should appreciate your thanking everyone concerned for the part that the Jewish Hospital has played in our campaign effort," he wrote John M. Shoenberg, hospital president.

Serving as co-chairmen of the Jewish Hospital collections drive were Mrs. Adele Steiber and Mrs. Jane Kopit, personnel, and Robert Rubright, public relations.

LEUKEMIA GRANT FIRST IN CITY



L. to R.: Mr. David A. Gee, Mrs. Stanley L. Lopata, and Mrs. R. R. Zimmerman.

Representatives of Miriam Lodge 17, United Order True Sisters, Inc., recently presented \$700 to Jewish Hospital for establishment of the Miriam Leukemia Fund.

The grant — first of its kind to a St. Louis area hospital — will help alleviate administrative, technical, and processing costs in blood transfusions for leukemia patients of all ages. The grant does not relieve the patient of his responsibility to provide donors, however.

Presenting the gift to Mr. David A. Gee, associate director, were

Mrs. Stanley L. Lopata, chairman of the Miriam Cancer Service Program, and Mrs. R. R. Zimmerman, chapter president.

The Miriam chapter, which will be 50 years old in April, belongs to the oldest Jewish women's organization in the United States. United Order True Sisters, Inc., is nearing 114 years of age.

The Miriam chapter supports many programs of the hospital's rehabilitation division and helps support radioisotope treatment at the hospital.

Two 35-year Veteran Employees Honored

Among the 38 Jewish Hospital employees who received service awards March 24, two marked 35 years of service here — Miss Marguerite S. Humes, the hospital's financial secretary, and Miss Emma L. Garbee, R.N., director of the school of radiological technology.

Miss Humes began her career as bookkeeper and admitting clerk in the old JH building on Delmar Blvd. Here on Kingshighway, she has served as assistant and head bookkeeper (with supervision of the admitting office and telephone operators), comptroller and accounts receivable supervisor.



Miss Marguerite S. Humes

Since September 1, 1959, she has occupied her present job, which includes interviewing service patients and visiting patients who want explanations of their hospital bills.

"I've seen the hospital grow from 120 to 494 beds," Miss Humes remarked. "And I anticipate even more growth in the future."

Miss Garbee started in the X-ray department on Delmar. A graduate nurse, she had previously worked in operating rooms in Springfield, Mo., and Glendale, Calif.

Among her many hobbies: fishing, golfing, swimming and painting (she studied art for 5 years at Washington University).



Miss Emma L. Garbee

Briton Writes About Hospital

Norman Darby, assistant administrator of National Hospital of Queens Square, London, England, a two-month visitor at Jewish Hospital in early 1958 as an "observer of methods of operation of American hospitals", has written an article about his trip.

The article, in an English hospital journal, mentioned the role of the volunteers at Jewish Hospital.

"I was impressed at the Jewish Hospital of Saint Louis by the valuable work carried out by unpaid volunteers," he wrote.

Elsewhere in his article, Darby said he was "impressed" with the speed and action which followed any reasonable proposition to improve the service of the hospital.

"Delays for no good reason were frowned upon, staff were kept well informed of decisions and plans by notices, and general frustration, caused by lack of information or unnecessary delay, was kept to a minimum."

DR. FENDLER DIES

Dr. Sylvester Fendler died of heart disease January 13 at the age of 62.

Dr. Fendler, graduated from Washington University School of Dentistry in 1919 and served on the courtesy staff of JH and Jewish Sanatorium. He was a member of the St. Louis Dental Society and the Missouri and American Dental Associations.

Surviving Dr. Fendler is a daughter, in Mount Vernon, New York. Dr. Fendler's wife died in February.

DR. N. FREUND DIES

Dr. Newton M. Freund, 76, died December 4, 1959.

He graduated from Washington University Medical School in 1904, and served as a general practitioner on Jewish Hospital medical staff since 1930.

He is survived by a son and four daughters.

Muriel Anscombe Dies In Detroit

Miss E. Muriel Anscombe, administrator of Jewish Hospital from 1925-1939, died of cancer December 14 at the age of 71.

Miss Anscombe, author, lecturer and teacher, was a member of the American College of Hospital Administrators and the American Hospital Association.

During her 14 years as hospital administrator, she was active in the St. Louis Community Council Committee on Volunteer Service, the National Council on Social Work, and a committee on Health Exposition.

She was a charter member of the Mid-West Hospital Association and was listed in "American Women" in 1936.

Miss Anscombe died in Detroit where she had made her home for the past several years.

NURSES RUNNERS-UP

The Jewish Hospital School of Nursing basketball team was runner-up for the Third District Student Nurses' Association championship for the 1959-60 season.

After chalking up only one loss during the season, the team lost the title to neighboring St. John's students in a hard-fought battle for the winner's trophy.

Capsules

ADMINISTRATION . . .

David Littauer, M.D., executive director, recently participated in an invitational workshop on Hospital-Nursing Home Relationships in Chicago. The workshop was sponsored jointly by the AHA, AMA, American Nursing Home Association, Blue Cross Commission, and the U.S. Public Health Service. Dr. Littauer gave the workshop's opening talk, outlining its objectives.

"Role of the Physical Therapy Department in the Average General Hospital" was the title of a talk by Dr. Littauer March 7 at a continuing education program for physical therapists sponsored by the Catholic Hospital Association at the Pick-Melbourne Hotel, St. Louis.

Dr. Littauer recently spoke at a luncheon meeting of the Conference on Homes for the Aged, held in the hospital's Steinberg auditorium. His topic was, "Long-Term Care Programs Sponsored by the Jewish Hospital of Saint Louis."

Dental Rehab Program Begun

The department of dentistry has begun a dental rehabilitation program for emotionally disturbed and spastic patients, mostly children.

The program — which includes all dental procedures which seek to maintain the normal health of the mouth — will be carried on only in the operating room section of the hospital where general anesthesia is available.

"The program differs from those carried on in private dental offices because it adds a control element in the use of general anesthesia and provides the opportunity for our dentists to work more closely with the hospital's department of anesthesiology," said Dr. Calvin H. Weiss, dental department director.

Private and service patients will be acceptable for the dental program.



Jo Jackson, R.N., manipulating a hydraulic Hoyer lift which raises the patient from wheelchair to bed, as part of the recent rehab workshop (see story, page 1).

REHABILITATION DIVISION . . .

Dr. Franz U. Steinberg, director, participated in a one-day workshop sponsored by the St. Louis Health and Welfare Council January 25. He was a member of a panel on "Encouraging the Staff to Work with the Aged."

Helen Davis, rehab secretary, was awarded \$50 for a contribution she sent to Coronet Magazine's "Silver Linings" column. The article appeared in the December 1959 issue.

Alice Chadwick has been appointed occupational therapy supervisor, replacing Mrs. Barbara Johnson, who moved to Tulsa, Oklahoma.

Janet Knudsen and Joanne Werner have joined the staff as physical therapists.

Ann Feldman became the Valentine bride of Carter B. Freeman, February 14.

SOCIAL SERVICE . . .

Two new caseworkers have joined the department's staff—Mrs. Kathryn Bennett and Mrs. Ruth Ross.

ADMITTING OFFICE . . .

New personnel in admitting include Earl C. Campbell, night supervisor; Iris Springer, admitting clerk, and Rose Hoffman, part-time admitting clerk.

(Continued on page 5)

PHYSICIANS PROMOTED

Two long-time members of Jewish Hospital's medical staff have been honored with promotions — Dr. Grover Liese and Dr. Paul S. Lowenstein, appointed to the Emeritus and Consulting staffs, respectively.

Dr. Liese, specialist in obstetrics and gynecology, has been an active medical staff member since 1926. Before promotion, he was attending obstetrician and gynecologist on the teaching section of the medical staff.

Dr. Lowenstein was appointed to the medical staff in 1922. He was president of the staff in 1953 and 1954, and served as chairman or member of many staff committees in the past three decades.

A surgeon specializing in peripheral vascular diseases, Dr. Lowenstein is currently president of the American College of Angiology.

Capsules

MEDICAL STAFF . . .

Dr. Joseph B. Kendis was elected president of the St. Louis County Medical Society.

Dr. Melvin M. Schwartz is new prexy of the St. Louis Society of Clinical Hypnosis.

The St. Louis Surgical Society's new president is Dr. Jerome I. Simon.

Dr. Paul S. Lowenstein, president of the American College of Angiology, attended an International College of Angiology conference held in Hamilton, Bermuda.

A talk on "What is Marriage Counseling?" was presented by Dr. B. Y. Glassberg at an American Medical Association meeting in Dallas, Texas.

Dr. Arthur E. Strauss, one of the founders and a past-president of the St. Louis Heart Association, was campaign chairman of the Heart Fund Drive for the third consecutive year. He appeared on KMOX-TV's "Eye On St. Louis" to discuss the campaign.

Athlete Stan London has received two additional honors — the Kansas City Athletic Club's invitational handball doubles tournament championship (with partner Al Goldstein), and the Elks' Club award as outstanding handball player in the St. Louis area. (P.S. — He received a third dividend on February 17, when a new baby boy was added to his family.)

CALLING ALL BOWLERS

. . . The medical staff is organizing a mixed bowling league for doctors and their wives, to start action in August. There will be ten 6-member teams bowling at 9 p.m. each Thursday at Tropicana Lanes, 7960 Clayton Rd. Anyone interested should oil up their creaking joints and contact one of the following league officers:

Dr. Sam Freund,
pres. JE. 1-5833

Dr. Leonard Wiedershine,
vice-pres. JE. 1-5468

Dr. Murray Chinsky,
sec'y-treas. EV. 5-5701

Better hurry — the quota's almost filled!

MANAGEMENT ENGINEERING . . .

Maurice D. Wolfe, assistant director and management engineer, participated in the 7th National Congress of the Association of Operating Room Nurses in New York, February 22-24. He was a member of a panel whose topic was, "A Look Into the Future of the Operating Room Nurse."

Mr. Wolfe will speak on "Industrial Engineering in Central Supply" at the 1960 convention of the

Mid-West Hospital Assn. in Kansas City, April 27-29.

DIVISION OF LABORATORIES . . .

Alex Sonnenwirth, M.S., director of the department of bacteriology and immunology, was elected vice-president of the Missouri branch of the Society of American Bacteriologists.

New clinical laboratory personnel include technicians, Barbara Songy, bacteriology; Bernice Pfiffner, chemistry; Arliese Pritchett, urinalysis; Anne Saul and Virginia O'Toole, pathology, and students Virginia Natho (chemistry) and Christine Strong (pathology).

Congratulations to mothers Mita Ehn and Ann Rosen, bacteriology lab, for new baby boys.

Alice Westrich, secretary, has joined the hematology lab's staff.

AUDIOLOGY . . .

Robert Goldstein, Ph.D., audiologist, has been elected the Missouri Speech and Hearing Association's delegate to the American Speech and Hearing Associations House of Delegates.

PUBLIC RELATIONS . . .

New "girl Friday" in the P.R. office is Lois Solomon, secretary to the public relations director.

Another "new addition" is 8 lb., 3 oz. Theodore Campbell Rubright, son of Robert Rubright, public relations director, who made his appearance February 3. The beaming parents point with pride to the fact that Master Rubright arrived promptly at 8:30 a.m. — the daily starting time for this office's personnel!

NEWS FLASH . . . Shirley Stoving, assistant to the public relations director, has announced her engagement to Mr. Howard F. Winfrey. The "I do's" will be said June 25 at Holy Name Church.

PLANT OPERATION AND MAINTENANCE . . .

New additions to the maintenance crew include Sidney Loeb, engineer; Sylvester Valleroy, stationary engineer; Raymond Tucker, plumber; Robert R. Summers, lead electrician, and John Younger, maintenance man.

RADIOLOGY . . .

Congratulations to Noah Susman, M.D., assistant radiologist, on his marriage to Miss Goldie Katz of New York. The couple became Dr. and Mrs. on Feb. 14 and honeymooned in Mexico.

Newest member of the department's staff is Joyce Todd, clerk-typist.

DIVISION OF SURGERY . . .

Nelle Sicher, research technician, is moving to New York with her groom, Don Frisch. Nelle, who was married February 20, has been with the hospital since Sept. 1946.

BUSINESS OFFICES . . .

Taking a six months' vacation at Uncle Sam's expense are Melvin Harrington, junior accountant, and Stephen Fendelman, part-time accounts payable clerk. PFC Mel and Pvt. Steve are stationed at Fort Leonard Wood, Missouri.

New faces in the business offices include Louise Jourdan, bookkeeper; Sal Rozes, part-time accounting clerk; Martha Evans, discharge clerk; Elaine Shapiro, clerk-typist; Elaine Goldberg, billing clerk, and Evelyn Craig, auditing clerk.

Best wishes to newly-wed Judy Esker, credit and collections secretary, and groom, Warren.

DIVISION OF MEDICINE . . .

Helga Fellay is new secretary to Dr. Albert Eisenstein, division director.

COMMUNICATIONS . . .

Welcome to new communications supervisor, Joe Romike. Joe replaces Mrs. Jane Lending, now a full-time housewife.

New voices at the switchboard belong to Grace M. Hise and Florence J. Valenta, who've joined our staff of "hello girls."

Congratulations to Corona Pohlmann, PBX operator, on the arrival of grandson Thomas Mark Hogan, on December 30.

Dr. Littauer Appointed

Dr. David Littauer is new chairman of the Tripartite Committee of the American Hospital Association, American Medical Association and American Nursing Home Association. This is a liaison group to explore needs and recommended standards and programs for nursing homes and other institutions caring for the chronically ill and aged sick.

Watch For The Beacon!

The Public Relations Office will soon publish a newsletter for service employees.

First edition of the paper, to be called *The Beacon*, is due about April 1.

"Jewish Center for the Aged" is the new name of the former Jewish Orthodox Old Folks Home at 1438 East Grand Boulevard.

216

The JEWISH HOSPITAL
of St. Louis

216 South Kingshighway
St. Louis 10, Missouri

Published in the interest of
the Jewish Hospital
of St. Louis

216 South Kingshighway
Beneficiary of the United
Fund and Jewish Federation
of St. Louis. Member,
Health and Welfare Council
and Group Hospital Service.

JOHN M. SHOENBERG
President

DAVID LITTAUER, M.D.
Executive Director

ROBERT RUBRIGHT
Director of Public Relations

SHIRLEY STOVING
Editor

LOIS SOLOMON
Associate Editor

Photographs by
HAROLD FERMAN



Dr. Arthur E. Strauss (l.) chats with Cardinal star and restaurateur Stan Musial, preceding birthday dinner in Dr. Strauss' honor Dec. 4. (Story on page 2.)

850 Attend Holiday Party

About 850 Jewish Hospital employees attended the annual holiday party December 17, 1959, in Steinberg Auditorium, setting an attendance record for this annual event.

Main feature of the party was the buffet — "all the food you can eat." What was eaten? 260 pounds of fried chicken, 160 pounds of potato salad, 150 pounds of cole slaw, 100 pounds of baked beans, 80 pounds of roast beef, and 70 pounds of Polish ham.

Serving on the holiday party committee, which began preparations for the event in mid-October were: Boris Axelrod, food; Miss Marjorie Boulton, music; Mrs. Beulah Sanders, housekeeping arrangements; Mrs. Fern Stewart, decorations, and Dr. Oliver Biederman. Chairman of the party was Robert Rubright.

CONTRIBUTIONS TO JEWISH HOSPITAL FUNDS

Contributions received are used for research, appliances for clinic patients, new equipment, and other worthy undertakings sponsored by The Jewish Hospital Medical Center Auxiliary.

The following are contributions received during period September 1, 1959 to January 15, 1960.

(Contributions to this Fund may be made by sending checks, payable to THE JEWISH HOSPITAL TRIBUTE FUND, to Mrs. Henry H. Stern, 6310 Waterman Avenue, St. Louis 30, or Mrs. Clarence T. Eckert, 410 North Newstead, St. Louis 8).

In Memory of Donor

JENNIE ABRAHAMS
Pauline, Alex and Ruth Freund
Rose and Leona Fuchs

IRVING ALCUS
Mr. and Mrs. Milton Price

JOSEPH ARNOLD
Mr. and Mrs. Henry H. Stern

SAM BAER, JR.
Mr. and Mrs. James T. Blair, III

SOL BANK
Mr. and Mrs. Frank Gellman
Mr. and Mrs. Meyer Inger
Mr. and Mrs. Abe Lieberman
(Cardio-Vascular Fund)
Mr. Sam Rotskoff
(Cardio-Vascular Fund)

MRS. BANKS
Mr. and Mrs. Carl Pass

DORA BASS
Mr. and Mrs. Joseph N. Bloom
Mr. and Mrs. Samuel Friedman
Dr. and Mrs. Milton H. Jasper
Mrs. Betty Pokres
Mr. and Mrs. Leon Seelig

LEO S. BAUMAN (Birthday)
Mr. and Mrs. Robert Lesser

MRS. M. J. BAUM
Mr. and Mrs. Percy Tucker

COTTLEIB B. BARKEN
Mr. and Mrs. Joseph Fishman
Mr. and Mrs. Frank Flotken
Dr. and Mrs. Leon Foster
Mr. and Mrs. Irwin Gittelman
Mr. and Mrs. Eugene Glick
Dr. and Mrs. Marshall Greenman
Mr. and Mrs. Sam Levin
Mr. and Mrs. Michael M. Mathes
Mr. and Mrs. Samuel Pass
Mr. and Mrs. Martin Schneider
Mr. and Mrs. Hanford Sher
Mr. and Mrs. Jerome P. Zellinger

MAUDE S. BAUMAN
Mr. and Mrs. Donald Cornbleet
Mrs. Beckye M. Elkas
Mrs. Harry L. Franc, Sr.
Mrs. Edwin L. Kahner
Mrs. Rosalie Lieber
Mrs. Hattie M. Loble
Mr. and Mrs. Ralph Lowenbaum
Mrs. S. H. Pufeles
Mr. and Mrs. Edward Silverman
Mrs. Herman Strauss
Mr. and Mrs. Paul Ullman
Mrs. Maurice Weil

FLOYD BEITMAN
Mr. and Mrs. Raymond Epstein

PRIVA BERG
Annette Hyatt

MRS. OSCAR BERMAN
Mr. and Mrs. Julian B. Cohn
Mrs. Simon Frank
Mrs. Charles Koven
Mrs. Ralph Weil

JEANETTE S. BERNSTEIN
Dr. and Mrs. Milton H. Meyerhardt
Dr. and Mrs. Bernard Schwartzman

LESTER BICK
Marx and Haas Korrekt Co.

BERTHA BISNO
Mrs. Myron N. Fisher
Mrs. Kurt Mansbacher

JULIUS M. BLOCK
Miss Dorothee Block

LOUIS A. BLOCK
Mrs. William Glicker
Dr. and Mrs. Milton H. Jasper
Mr. and Mrs. L. J. Ross
Max Sigoloff
Mr. and Mrs. Sol Wolf

NATHAN BLOCK
Miss Dorothee Block
Mr. and Mrs. David Lentzner

MRS. H. E. BOND
Mr. and Mrs. Al D. Goldstein

JENNIE BRIMER
Mr. and Mrs. David Lentzner

DANIEL BUXNER
Sidney R. Baer, Jr.
Mr. and Mrs. Frank Flotken

HARRY COHEN
Molly Ruden
Mr. and Mrs. Harry Shapiro, Jr.

ROSE COX
Mrs. Benjamin Bond, Jr.

MRS. CURTIS
Mr. and Mrs. Joseph H. Fischman

FANNIE CUTTER
Mr. and Mrs. Abe Baker
(Heart Research)

JULIA CYTRON
Mr. and Mrs. Harry Shapiro, Jr.

ALICE DAVIS
Mrs. Sol H. Engel

LEON DAVIDSON
Pauline, Alex and Ruth Freund
Leona Fuchs
Rose Fuchs

EUGENE C. DREYER
(Felix S. Dreyer Memorial Fund)
Mrs. Harry Abraham
Mr. and Mrs. Lee Abraham
Mr. and Mrs. Charles Baskowitz
Mr. and Mrs. Morton R. Bearman
Mr. and Mrs. Alfred Benjamin
Mrs. M. Erwin Bry
Mr. and Mrs. J. B. Charak
Mrs. Ralph D. Cohen
Dr. and Mrs. Leo Davis
Mr. and Mrs. Jack Desbecker

In Memory of Donor

Mrs. Fred A. Fligman
Mr. and Mrs. Harry L. Franc, Jr.
Mr. and Mrs. Joseph Glaser, Jr.
Dr. and Mrs. Alfred Goldman
Dr. and Mrs. Marshall Greenman
Mr. and Mrs. Jason Kawin
Mr. and Mrs. Lee I. Kaufman
Mr. and Mrs. Argo E. Landau
Mrs. Harry Lesser
Harold Lewin Family
Mr. and Mrs. Richard H. Lewin
Mr. and Mrs. Ben Loeb
Mr. and Mrs. Harry Loeb
Mr. and Mrs. Jerome Marx
Mr. and Mrs. Maurice Mendle
Mrs. Sam Minner
Mr. and Mrs. Harry Quicksilver
Dora K. Rosen
Mr. and Mrs. Theodore R. Samuels
Mr. and Mrs. Arthur Scharff, Jr.
Mr. and Mrs. Richard Shoninger
Mrs. Elsa Strauss
Mr. and Mrs. Harry Tenenbaum
Mrs. Paul Treuman
Mr. and Mrs. Percy Tucker
Mr. and Mrs. Paul Ullman
Mrs. Henry R. Weisels

MRS. CHARLES DELASKE
Mr. and Mrs. Simon Edison
Mrs. Harry L. Franc, Sr.
Mr. and Mrs. Edward Greensfelder
Mr. and Mrs. Louis G. Rothschild
Mrs. Elsa Strauss

MOTHER OF MRS. JOSEPH EDLIN
Mr. and Mrs. Hank S. Iglauer
Mr. and Mrs. Jerome J. Marx

SOL FEINBERG
Dr. and Mrs. Harry Rosenbaum

ETHEL ENGEL
Dr. and Mrs. Robert Friedman

ROSE EPSTEIN
Mr. and Mrs. Michael M. Mathes
Mr. and Mrs. Paul Putzel
Mr. and Mrs. Paul S. Sigal
Earl Susman
Herman Willer

ELI ESSERMAN
Mr. and Mrs. Willard Levy
Dr. and Mrs. Milton H. Meyerhardt
Mr. and Mrs. K. R. Plessner
Mr. and Mrs. Joseph F. Ruwitch
Mr. and Mrs. Edward Schweich
Earl Susman
Mr. and Mrs. Louis Tiger
Mr. and Mrs. Percy Tucker
Herman Willer

JAKE FEINBERG
Samuel Demoff
Simon Edison
Mr. and Mrs. Manuel Levin
Mr. and Mrs. Louis Liebson

ELI FELDMAN
Mr. and Mrs. Archie Glick
Louis and Pearl Feldman
Lilly Feldman

JOSEPH H. FELDMAN
Mr. and Mrs. Frank Flotken
Mr. and Mrs. Louis Gelber
Mr. and Mrs. Max A. Horwitz
Mr. and Mrs. William R. Klein

FLORA FELSTEIN
Max Sigoloff

CHARLES H. FENDELL
Mrs. Charles H. Fendell
(Charles H. Fendell Fund)
Mr. and Mrs. Sidney E. Langsam
(Charles H. Fendell Fund)
Mr. and Mrs. Meyer Loomstein
(Charles H. Fendell Fund)

DR. SYLVESTER E. FENDLER
Mr. and Mrs. Herbert N. Armstein
Mr. and Mrs. Arthur B. Baer
Mr. and Mrs. Joseph L. Cohen
Richard B. Cronheim
Mr. and Mrs. Clifford Glaser
Mr. and Mrs. J. L. Gordon
Dr. and Mrs. Axel Gronau
Leo C. Fuller
Leona Fuchs
Rose Fuchs
Mr. and Mrs. Carl Glaser, Jr.
Mr. and Mrs. G. L. Harris
Mr. and Mrs. Peter Husch
Mr. and Mrs. Lee I. Kaufman
Mr. and Mrs. Edwin Levis
Mr. and Mrs. Fred Levis
Mr. and Mrs. Harry Lesser, Sr.
Mr. and Mrs. Samuel Liberman
Mr. and Mrs. Ben Loeb
Louis M. Loeb
Dr. Benjamin F. May
Mr. and Mrs. Edwin B. Meissner, Jr.
Mr. and Mrs. Paul E. Peltason
Mr. and Mrs. Harry S. Rosenberg
Mr. and Mrs. Morris H. Rosenthal
Mr. and Mrs. Joseph F. Ruwitch
Dr. and Mrs. Llewellyn Sale, Jr.
Mrs. Edward Scharff
Mr. and Mrs. Nicholas Scharff
Mr. and Mrs. Gordon Scherck
Mr. and Mrs. Robert H. Shoenberg
Mr. and Mrs. Sydney M. Shoenberg, Sr.
Mr. and Mrs. Edwin Shroder
Mr. and Mrs. John E. Simon
Mr. and Mrs. Sam S. Simon
Mr. and Mrs. Charles J. Steiner
Mr. and Mrs. Henry H. Stern
Walter G. Stern
Mr. and Mrs. Millard A. Waldheim
Mr. and Mrs. Richard K. Weil
Mr. and Mrs. Frank P. Wolf

DR. NEWTON M. FREUND
Mr. and Mrs. Joseph Arndt, Jr.
Mr. and Mrs. S. Charles Baer
Mr. and Mrs. Charles Baskowitz
Mr. and Mrs. Oscar Brand
Mr. and Mrs. Milton Cohen
Bessie Deutsch and Family
Mrs. Felix Dreyer
Mr. and Mrs. Harry Edison
Mr. and Mrs. Simon Edison
Mr. and Mrs. Harry Esserman
Mrs. Albert Felberbaum
Mr. and Mrs. Bennett Frelich
Milton E. Freund, Jr.

In Memory of Donor

Pauline, Alex and Ruth Freund
Dr. and Mrs. Sam Freund
Mr. and Mrs. S. E. Freund
Mr. and Mrs. Harvey Friedman
Mrs. Charles Glazer
Mr. and Mrs. A. Fuller Glaser
Mrs. Nathaniel M. Glick
Mr. and Mrs. Milton Goldman
Mr. and Mrs. Al D. Goldstein
Mr. and Mrs. J. L. Gordon
Mrs. Irving Hartmann
Mr. and Mrs. Max A. Horwitz
Mr. and Mrs. Charles R. Jacobi
Jewish Hospital Medical Staff
Mr. and Mrs. Byron Kaminer
Mr. and Mrs. Lee Kaufman
Mr. and Mrs. Jason Kawin
Mr. and Mrs. Fred Kling
Mr. and Mrs. Wallace Kolbrenner
Mr. and Mrs. Sidney Landau
Mr. and Mrs. Ira M. Lang
Mr. and Mrs. Robert Lesser
Mr. and Mrs. Rodrick Lewin
Mr. and Mrs. Harry Loeb
Mr. and Mrs. Henry Lowenhaupt
Mr. and Mrs. Franklin Mange
Mr. and Mrs. Nathan Mathes
Mr. and Mrs. Robert Mathes
Mr. and Mrs. Harry Milton
Dr. and Mrs. Milton H. Meyerhardt
Mrs. Frieda S. Novoson
Mrs. Dorothy Pennie
Mr. and Mrs. Milton Price
Mr. and Mrs. Joyce Portnoy
A. P. Poulson
Mr. and Mrs. Gordon Scherck
Mr. and Mrs. Herman Selldin
Dr. and Mrs. H. R. Senturia
Mr. and Mrs. Hanford G. Sher
Mrs. Ben L. Shifrin
Mr. Louis Shifrin
Mr. and Mrs. John M. Shoenberg
Mr. and Mrs. Dan Siegel
Mr. and Mrs. Joseph Silverstein
Dr. and Mrs. Jerome I. Simon
Mr. and Mrs. Elliot H. Stein
Mr. and Mrs. Louis D. Steiner
Mr. and Mrs. Henry H. Stern
The Investment Trust
Mr. and Mrs. Louis Tiger
Mr. and Mrs. Percy Tucker
Richard E. Turner
Mr. and Mrs. Alfred Vorhaus
Mr. and Mrs. Millard A. Waldheim
Mr. and Mrs. Robert Watel
Mr. and Mrs. Herbert Weinstock
Carolyn Werner
Mr. and Mrs. Sander Zwick
R. P. Cohn
Mr. and Mrs. Joseph Tucker

IDA FINKELSTEIN
Mr. and Mrs. Eugene Pearlina

SAM FINKELSTEIN
Mr. and Mrs. Eugene Pearlina

RICHARD ALAN FISHER
Mr. and Mrs. Sol Bearman
Mrs. Ralph D. Cohen
Mr. and Mrs. Samuel Cohen
Mr. and Mrs. Melvin DeGroot
Mrs. A. Deutsch
Mr. and Mrs. Berney Harris
Mr. and Mrs. Robert Nassauer
Dora K. Rosen
Mr. and Mrs. Eli Sandperl
Sara Weiner

SOL FLANCE
Mrs. Henry R. Weisels

FATHER OF MISS FRANCINE
Mrs. Jack Desbecker

LOUIS FREELING
Mr. and Mrs. Sherman Blustein
Mr. and Mrs. Max Davidson
Mr. and Mrs. M. L. Flotken

MRS. WALTER FREEMAN
Mr. and Mrs. Meyer M. Fishman

JACK R. FORCHEIMER
Mrs. Ralph D. Cohen
Mr. and Mrs. Leonard Bierman
Dale F. Fahrendorf
Mr. and Mrs. J. L. Gordon
Mr. and Mrs. John Isaacs, Jr.
Mr. and Mrs. Louis Tiger

MOTHER OF MRS. HERMAN FRIEDMAN
Mrs. Charles H. Fendell
(Charles H. Fendell Fund)

SIMON FRIEDMAN
Arthur H. Slonim

CARRIE FRISCH
Mr. and Mrs. Carl Bauman

HARRY GLASSMAN
Mr. and Mrs. Charles Crane

GUSSIE GASSNER
Mrs. Ruth Herwitz

SAMUEL GANS
Mr. and Mrs. J. Warren Agatstein
Mr. and Mrs. Sylvan Agatstein
Mr. and Mrs. J. B. Charak
Mr. and Mrs. Frank Gellman
Dr. and Mrs. B. Y. Glassberg
Dr. and Mrs. Harold Joseph
Mr. and Mrs. Harry Laba
Mr. and Mrs. Rodrick J. Lewin
Mr. and Mrs. Franklin Mange
Mr. and Mrs. Jerome J. Marx
Dr. and Mrs. Milton H. Meyerhardt
Mr. and Mrs. Edward F. Schweich

WILLIAM GLICKER
Mr. and Mrs. Oscar Brand
Mr. and Mrs. Mel Collar
Mr. and Mrs. Harry A. Collinger
Mr. and Mrs. Abe Lieberman
Mr. and Mrs. Bernard Lieberman
Mr. and Mrs. Harry E. Lieberman
Mr. and Mrs. Sylvan Robinson

ANNA FUHRER GLUCK
Mr. and Mrs. Emanuel Fuhrer

ALVIN D. GOLDMAN
(Alvin D. Goldman Research Fund)
Mrs. Marjorie Frank Lesser

BEN GOLDMAN
Mr. and Mrs. Leo Aberson
Mr. and Mrs. Les Inger

WILLIAM H. GOLDMAN
Mr. and Mrs. L. Hemple
Mr. and Mrs. Morton L. Meyer
Mrs. Dora K. Rosen
Tatie Seidel

JULIUS GOODMAN
Mr. and Mrs. Walter Skrainka

SIEGMUND GOTTLIEB
A. P. Poulson

In Memory of Donor

JOSEPH GREENBERG
Mr. and Mrs. Raymond Freed

WILLIAM GROSSBLATT
Joseph Kohn
Mr. and Mrs. Carl Pass

CHARLES GROSS
Miss Doris Hoelscher
Dr. and Mrs. William A. Marmor
Mr. and Mrs. Harry Shapiro, Jr.
Mr. and Mrs. Max Sigoloff

JENNIE GROSSMAN
Dr. and Mrs. B. Y. Glassberg

FATHER OF MRS. H. DALE GUNTHER
Mr. and Mrs. Al D. Goldstein

IDA GROSSMAN
Mr. and Mrs. Maurice Handelsman

MARTHA HAAS
Mr. and Mrs. F. Bert Baer
Mr. and Mrs. Morton Bearman
Mr. and Mrs. Milton Cohen
Mr. and Mrs. Melvin DeGroot
Mr. and Mrs. Raymond Epstein
Mr. and Mrs. Raymond Freed
Dr. and Mrs. Robert H. Friedman
Dr. and Mrs. B. Y. Glassberg
Mr. and Mrs. Fred Kling
Mr. and Mrs. Sidney Landau
Mr. and Mrs. Maurice B. Lasky
Mr. and Mrs. Ralph Lowenbaum
Mr. and Mrs. Franklin Mange
Mr. and Mrs. Ben Steinbach
Mr. and Mrs. Louis D. Steiner

ELIZABETH HANAU
Dr. and Mrs. William C. Jackson
(Cancer Research)
Mr. and Mrs. Paul Putzel
(Cancer Research)
Mrs. Willy Schmidt
Mrs. Elsa Treuman

MRS. HARRY HECKER
Irvin, Bettman, Jr.

ISIDOR HEIDENREICH
Mr. and Mrs. Fred Kling
Violet Levy
Mr. and Mrs. Sol Shakofsky

HERMAN HELLER
Dr. and Mrs. Martin Bergmann
Mrs. Josephine Herzfeld
Mr. and Mrs. Carl Lippman

CAL R. HIRSCH
Florence R. Bauman
Mr. and Mrs. Argo E. Landau
Mr. and Mrs. Harry W. Loeb
Mr. and Mrs. Milton Price
Mr. and Mrs. Arthur Scharff, Jr.

JACK HIRSCH
Mr. and Mrs. Sam Langsdorf

GERT HIRSHFIELD
Mr. and Mrs. M. Cohen
Cecil Friedman
Mr. and Mrs. M. Nieberg

HYMAN HOFFMAN
Mr. and Mrs. Frank Flotken

FATHER OF MRS. HANK S. IGLAUER
Mrs. Charles H. Fendell
(Charles H. Fendell Fund)

GEORGIA ISAACS
Mr. and Mrs. Victor N. Friedman

ALLEN JAFFIE
Mr. and Mrs. Nat Lurie

HARRY JAMIESON
Mrs. Maurice Davis
Mr. and Mrs. Alvin D. Goldstein
Mr. and Mrs. Harry Liss and Jay Benjamin Loeb
Dr. and Mrs. William A. Marmor
Joseph F. Ruwitch
Mr. and Mrs. Harry Sherman

ABRAHAM JOFFE
Mr. and Mrs. Eugene Pearlina

MAX JOSEPH
Mr. and Mrs. J. B. Charak
Mr. and Mrs. Louis Karpf

NELLIE KAISER
Mrs. Yetta Chekanoff
Dora, Sara and Yetta Kaiser
Mr. and Mrs. Frank Leventhal
The Moss
Rose Polinsky
The Orensteins

SISTER OF HERMAN KAPLOW
Mr. and Mrs. Joseph F. Ruwitch

BENJAMIN KATZ
Mrs. Fannie Dunie
Mr. and Mrs. Irving Schiffman

NORA KAUFMAN
Mr. and Mrs. J. B. Charak

SAMUEL H. KEINER
Mr. and Mrs. Joseph N. Bloom
Mrs. Harry Rothman

FATHER OF DR. NATHAN KIMELMAN
Dr. and Mrs. Sol Weber

PINKEY KOPLAN
Mr. and Mrs. Harry S. Quicksilver

EVA KORNGOLD
Mr. and Mrs. Melvin DeGroot
Dr. and Mrs. B. Y. Glassberg
Mr. and Mrs. Kurt Horn

ROSE KOSLOFF
Mr. and Mrs. Jerome J. Seidel
Mr. and Mrs. Maurice E. Seidel

SARAH KOTNER
Mrs. Ernst Grote

FRANCES KREBS
Dr. Gunter Schmidt

JAKE KRONE
Mr. and Mrs. Carl K. Fireside

REBECCA KAUFMAN
Mr. and Mrs. Jason Kawin

CHARLES KOVEN
Dr. and Mrs. Arthur Bortnick
Dr. and Mrs. Clarence T. Eckert
Mr. and Mrs. Simon Edison
Mr. and Mrs. Major B. Einstein
Dr. and Mrs. Julius Elson
Dr. and Mrs. Leon Foster
Dr. and Mrs. Sam Freund
Mr. and Mrs. Ralph Hirsch
Mr. and Mrs. Byron Kaminer
Dr. and Mrs. Michael Karl
Mr. and Mrs. Herman Katcher
Dr. and Mrs. Melvin B. Kirstein
Mrs. Marian Jeane Kline
Mrs. Sally Kushins
Mr. and Mrs. Irvin S. Lang
Mr. and Mrs. Sam Langsdorf
Dr. and Mrs. Milton Lenobel
Frances J. Levis
Mr. and Mrs. Frederick Levis
Mr. and Mrs. Willard Levy

In Memory of Donor
 Mr. and Mrs. Harry W. Loeb
 Mr. and Mrs. Irving Londy
 Dr. and Mrs. Milton H. Meyerhardt
 Mr. and Mrs. Philip Rashbaum
 Mr. and Mrs. Sanford Roseder
 Mr. and Mrs. Robert Rosenheim
 Mr. and Mrs. Morris H. Rosenthal
 Mr. and Mrs. Edward F. Ruprecht
 Mr. and Mrs. Joseph F. Ruwitch
 Dr. and Mrs. Llewellyn Sale, Jr.
 Mr. and Mrs. Theodore R. Samuels
 Mrs. Harry Sandperl
 Dr. and Mrs. Harold Scheff
 Dr. and Mrs. Ben Senturia
 Dr. and Mrs. H. R. Senturia
 Carolyn Sherman
 Ben L. Shifrin
 Mr. and Mrs. Edwin Shifrin
 Louis Shifrin
 Mr. and Mrs. John M. Shoenberg
 Mr. and Mrs. Robert H. Shoenberg
 Mr. and Mrs. Sidney M. Shoenberg, Sr.
 Mr. and Mrs. Charles J. Steiner
 Mr. and Mrs. Louis D. Steiner
 Earl Susman
 Mr. and Mrs. Joseph Tucker
 Mr. and Mrs. Paul Ullman
 Mr. and Mrs. Millard A. Waldheim
 Mr. and Mrs. Robert Watel
 Mrs. Ralph Weil
 Mr. and Mrs. Robert Weinstock
 Mr. and Mrs. Louis Wertheimer
 Mr. and Mrs. Louis E. Westheimer
 Herman Willer
ELEANOR KRISTAL
 Mr. and Mrs. J. B. Charak
 Mr. and Mrs. Al D. Goldstein
 Mrs. Leo Gottlieb
 Mr. and Mrs. Carl Lippman
 Mrs. David Komn
 Mr. and Mrs. Jake Jacobs
 Mr. and Mrs. Paul Kranzberg
 Mr. and Mrs. Willard Levy
 Mr. and Mrs. Edwin B. Meissner, Jr.
 Mr. and Mrs. Harry Milton
 Munger Linen Service Co.
 Mr. and Mrs. Martin Schneider
 Mr. and Mrs. Walter Sears
 Earl Susman
 Herman Willer
MAX LAMBERG
 Mr. and Mrs. Ralph Friedman
 and Lynne
MARY G. LASKY
 Mr. and Mrs. Eugene Pearlina
HYMAN LAZERWITZ
 Mr. and Mrs. David Stein
FATHER OF MR. L. LERNER
 Mr. and Mrs. Charles E. Crane
JEANETTE LEVENSON
 Mr. and Mrs. Harold Dubinsky
 Mr. and Mrs. Melvin Dubinsky
ROBERT LEVINE
 Faye Ellis
 Mrs. Lillian Franklin
 Bess Gardner
 Mr. and Mrs. Harry Gardner
 and Children
 Mrs. Alfred Goldman
 Mrs. Bertha Rovin and Family
 Mr. and Mrs. O. E. Rachoisky
MRS. ALBERT LEVY
 Mr. and Mrs. Carl Pass
 Mr. and Mrs. Isadore Pass
AUGUSTA LIPNICK
 N. L. Gould
 Jerome J. Seidel
 Leonard Seidel
 Maurice E. Seidel
JOSEPH LIPSUTZ
 Stanley Olshwanger
LOVING DEAR ONES
 Mrs. Lewis Levin
SOL BAUMGARTEN
 Dr. and Mrs. Arnold S. Block
 Mr. and Mrs. Jake Jacobs
 Mr. and Mrs. Kenneth Droit
 Mrs. Oscar Block
 Dr. and Mrs. H. M. Camel
 Dr. and Mrs. Harold Franklin
 Dr. and Mrs. Max Franklin
RALPH D. LOWENSTEIN
 Mr. and Mrs. Albert Aloe
 Mr. and Mrs. Joseph Arndt, Jr.
 Mr. and Mrs. Lewis Bettman
 Mr. and Mrs. Oscar Brand
 Richard B. Cronheim
 Dr. and Mrs. Norman W. Drey
 Mr. and Mrs. Major B. Einstein
 Mr. and Mrs. Harry Esserman
 Mrs. Harry L. Franc, Sr.
 Mr. and Mrs. Harry L. Franc, Jr.
 Mrs. Henry A. Friedman
 Mrs. Harvey Frohlichstein
 Mr. and Mrs. G. L. Harris
 Mr. and Mrs. John A. Isaacs, Jr.
 Mrs. Sanford Jacobs
 Mr. and Mrs. Ralph W. Kalish
 Mr. and Mrs. Lee I. Kaufman
 Mr. and Mrs. Sam Langsdorf
 Mrs. Harry Lesser
 Mrs. Marjorie Frank Lesser
 Mr. and Mrs. Lawton Levy
 Mr. and Mrs. Willard Levy
 Mr. and Mrs. Al Loeb
 Mr. and Mrs. Ben Loeb
 Mr. and Mrs. Harry Loeb
 Mr. and Mrs. Ralph Lowenbaum
 Mr. and Mrs. Edwin B. Meissner, Jr.
 Dr. and Mrs. Milton H. Meyerhardt
 Mr. and Mrs. Phillip Rashbaum
 Mr. and Mrs. Ralph Ritter
 Mr. and Mrs. Harry S. Rosenberg
 Mr. and Mrs. Robert Rosenheim
 Mr. and Mrs. Sidney Rothschild, Jr.
 Mr. and Mrs. Joseph F. Ruwitch
 Dr. and Mrs. Llewellyn Sale, Jr.
 Mr. and Mrs. Theodore R. Samuels
 Edwin Schiele
 Mr. and Mrs. Herbert Schiele
 Dr. and Mrs. Gunter Schmidt
 Dr. and Mrs. Ben H. Senturia
 Mr. and Mrs. John M. Shoenberg
 Mr. and Mrs. Robert H. Shoenberg
 Mr. and Mrs. Sydney M. Shoenberg, Jr.
 Mr. and Mrs. Richard A. Shoninger
 Dr. and Mrs. P. D. Stahl
 Mr. and Mrs. A. Ernest Stein
 Mr. and Mrs. Elliot H. Stein
 Dr. and Mrs. Franz U. Steinberg
 Mrs. Mark C. Steinberg

In Memory of Donor
 Mr. and Mrs. Henry H. Stern
 Mr. and Mrs. Harry Tenenbaum
 Mrs. Paul Treuman
 Mr. and Mrs. Edward Turner
 Mr. and Mrs. Millard A. Waldheim
 Rhoda Watel
 Mr. and Mrs. Robert Watel
 Mr. and Mrs. Richard K. Weil
 Mr. and Mrs. Louis E. Westheimer
 Herman Willer
JULIAN MAAS
 Mrs. E. K. Maas
SARAH MAGOON
 Mr. and Mrs. Samuel Binowitz
 Mr. and Mrs. Louis M. Ettman
JULES HARRY MASS
 Mr. and Mrs. Morris Moscovitz
ISADORE MATHES
 Mr. and Mrs. Charles Baskowitz
 Mr. and Mrs. Irvin Bettman, Jr.
 Mr. and Mrs. Oscar Brand
 Mrs. Felix Dreyer
 Mr. and Mrs. Eli Ettlinger
 Mr. and Mrs. Raymond Freed
 Mr. and Mrs. Emanuel Fuhrer
 Mrs. Anna L. Gallant
 Mr. and Mrs. Louis Gelber
 Mrs. Nathaniel M. Glick
 Dr. and Mrs. Alfred Goldman
 Mr. and Mrs. Israel Heifetz
 Mr. and Mrs. Max A. Horwitz
 Mr. and Mrs. Sidney Jacobs
 Mr. and Mrs. Jason Kavin
 Mr. and Mrs. I. M. Kay
 Mr. and Mrs. Fred Kling
 Mr. and Mrs. Sam Levin
 Mr. and Mrs. Jerome J. Marx
 Mr. and Mrs. Harry Milton
 Stanley Olshwanger
 Mr. and Mrs. Robert A. Palan
 Mr. and Mrs. Leslie Roth
 Julian G. Samuels, Sr.
 Julian G. Samuels, Jr.
 Theodore R. Samuels
 The Seidel Family
 Mr. and Mrs. Milton Strauss
 Mr. and Mrs. Boris Tureen
 William D. Wallbrunn
 Mr. and Mrs. Herbert Weinstock
 Mr. and Mrs. Charles H. Yalem
 Mr. and Mrs. Richard Yalem
 Mr. and Mrs. Frank Flotken
DR. HERBERT A. MAZUR
 (Pediatric Division)
 Dr. and Mrs. Martin Bergmann
 Dr. and Mrs. Harry Cutler
 Mr. and Mrs. Louis Gelber
 Mr. and Mrs. Louis Gilden
 Mr. and Mrs. Max W. Kramer
 Dr. and Mrs. Justin F. Kramer
 Mr. and Mrs. Harry L. Laba
 Dr. and Mrs. Milton Lenobel
 Mr. and Mrs. Eugene Pearlina
 Phi Delta Epsilon Fraternity
 Dr. and Mrs. Aaron Reiches
 Dr. and Mrs. Alfred S. Schwartz
 Dr. and Mrs. Bernard Schwartzman
 Dr. H. R. Senturia
 Mr. and Mrs. Robert L. Shifrin
 Dr. and Mrs. Jerome I. Simon
 Mr. and Mrs. Morris D. Victor
 Dr. and Mrs. L. J. Wiedershine
 Mr. and Mrs. Malcolm Wittels
HATTIE MARKS
 Mr. and Mrs. Albert Aloe
 Mrs. Fred Fligman
 Mr. and Mrs. Fred Frank
 Mrs. Harry L. Franc, Sr.
 Mr. and Mrs. Harry L. Franc, Jr.
 Mr. and Mrs. Irvin S. Lang
 Mr. and Mrs. Louis G. Rothschild, Sr.
MRS. MAYER
 Miss Violet Levy
 Mrs. Hilda Sale
LOUIS MEYER
 Arthur S. Feiss
MAX MILLSTONE
 Mr. and Mrs. Frank Flotken
 Mr. and Mrs. Morris Flotken
CHARLES MINCER
 Mr. and Mrs. Charles Baskowitz
ABRAHAM L. MORRIS
 Mrs. Kate C. Soltz
MINNIE MOSES
 Ruth Herwitz
GUS G. MOSINGER
 Mr. and Mrs. F. Bert Baer
 Mr. and Mrs. Sherman Blustein
 Mr. and Mrs. Oscar Brand
 Mr. and Mrs. Harry A. Collinger
 Mr. and Mrs. Sid Davidoff
 Mr. and Mrs. Max Davidson
 Mrs. Charles Fendell
 (Charles H. Fendell Memorial Fund)
 Mr. and Mrs. M. L. Flotken
 Mr. and Mrs. Floyd Friedman
 Mrs. Anna L. Gallant
 Mr. and Mrs. Louis Gelber
 Mr. and Mrs. Paul Gittelman
 Mr. and Mrs. Sam Intrater
 Dr. and Mrs. Milton H. Jasper
 Mr. and Mrs. Max W. Kramer
 Mrs. Leonard Kushins
 Mr. and Mrs. Sidney Landau
 Mr. and Mrs. Harry W. Loeb
 Mr. and Mrs. Michael M. Mathes
 Dr. and Mrs. Milton H. Meyerhardt
 Mr. and Mrs. Bing Miller
 P. J. Parnas
 Mr. and Mrs. Carl Pass
 Mr. and Mrs. Isadore Pass
 Theodore R. Samuels
 Max Sigoloff
 Mr. and Mrs. Myron L. Silver
PHILIP MOVSHIN
 Mr. and Mrs. Carl Pass
LOUIS NACHMAN
 Mr. and Mrs. Jay L. Fihn
 Mr. and Mrs. Emanuel Fuhrer
JEROME B. NASSAU
 Mrs. Ralph D. Cohen
 Mr. and Mrs. Louis Ettman
 Mrs. Josephine Herzfeld
 Mrs. Frieda S. Novoson
 Mrs. Dora K. Rosen
 Mr. and Mrs. Edward Ruprecht
MOTHER OF MRS. SAM NEIMAN
 Mr. and Mrs. Kurt Horn
REBECCA NEWMAN
 Mr. and Mrs. Carl Pass
ANNA OBERMAN
 Miss Dorothee Block
 Mr. and Mrs. Israel Heifetz

In Memory of Donor
MOTHER OF MRS. MORTON PAREIRA
 Mr. and Mrs. Leonard Hornbein
LOUIS PASSER
 Mr. and Mrs. Louis Goodman
 Mrs. Rosa Rosenbaum
JOHN PERLSTEIN
 Mr. and Mrs. James T. Blair, III
BETTY PLOUGH
 Mrs. Harry Abraham
 Mr. and Mrs. Charles Baskowitz
 Mr. and Mrs. Fred Kling
 Miss Violet Levy
 Mrs. Hilda L. Sale
HARRY POLISHUK
 Rose and Carl Block
 Mr. and Mrs. Carl Pass
 Mr. and Mrs. Isadore Pass
ELSIE K. PROBSTEIN
 (Elsie K. Probstein-Harry Koplar
 Brace Fund)
 Dr. and Mrs. Milton H. Meyerhardt
 Peggy Murray
 Mr. and Mrs. Eugene Pearlina
 Dr. and Mrs. Bernard Schwartzman
SIGMUND HENRY RUFELLES
 Mrs. Alvin L. Bauman
 Mr. and Mrs. Irvin Bettman, Jr.
 Mr. and Mrs. Lewis Bettman
 Mrs. M. Erwin Bry
 Dr. and Mrs. Moyer Fleisher
 Mrs. Harry L. Franc, Sr.
 Mr. and Mrs. Harry L. Franc, Jr.
 Mr. and Mrs. Herbert Frank
 Mr. and Mrs. Joseph Glaser, Jr.
 Mr. and Mrs. Edward Greensfelder
 Mr. and Mrs. G. L. Harris
 Mary Ann Hine
 Mr. and Mrs. Herman Husch
 Mr. and Mrs. John Isaacs, Jr.
 Mrs. Sanford Jacobs
 Thelma James
 Mr. and Mrs. Charles Jenkins
 Fifth Floor Dept.—Ellen Kaye Mfg. Co.
 Mr. and Mrs. Sam Langsdorf
 Mrs. Harry Lesser
 Mr. and Mrs. Edwin Lewis
 Mr. and Mrs. Lawton Levy
 Mrs. A. E. Liepold
 Mr. and Mrs. Ben Loeb
 Mr. and Mrs. Harry Loeb
 Louis M. Loeb
 Employees of First Floor—
 R. Lowenbaum Mfg. Co.
 Mrs. Isidore May
 Mr. and Mrs. Robert H. Mayer
 Mr. and Mrs. Milton Price
 Mr. and Mrs. Louis Putzel
 Mrs. Mary B. Rosen
 Mr. and Mrs. Morris H. Rosenthal
 Mr. and Mrs. Louis C. Rothschild, Sr.
 Mrs. Wilton Rubinstein
 Mr. and Mrs. Joseph Ruwitch
 Mr. and Mrs. Theodore R. Samuels
 Mr. and Mrs. Arthur Scharf, Jr.
 Mr. and Mrs. Gordon Scherck
 Dr. and Mrs. P. D. Stahl
 Mr. and Mrs. A. Ernest Stein
 Mr. and Mrs. Charles J. Steiner
 Mr. and Mrs. Henry H. Stern
 Mrs. Elsa Strauss
 Mr. and Mrs. Millard A. Waldheim
 Mrs. Earl D. Weil
 Mrs. Henry Weil
 Mr. and Mrs. Richard K. Weil
 Mr. and Mrs. Robert Yarbrough
MRS. JAMES REDDIN
 Mr. and Mrs. Robert F. Meyers
EDITH REDLER
 Mrs. Maurice Davis
 Mr. and Mrs. Leo Frank
 Mr. and Mrs. Paul Sigan
MOTHER OF ABE ROGUL
 Mr. and Mrs. Joseph Kohm
LEO ROSENBERG
 Mrs. Ida Sparks
 Earl Susman
ROBERT ROSENBERG
 Dr. and Mrs. Sam Collub
 Mr. and Mrs. Sam Kugman
 Stanley Lentin
JIMMY ROSENTHAL
 Dr. and Mrs. Leo G. Davis
 (Felix S. Dreyer Memorial Fund)
MRS. LUCIEN ROSENWALD
 Mr. and Mrs. Harry Esserman
 Mrs. Hymen Shifrin
HONEY BAYLES ROSS
 Mrs. Ruth Herwitz
JENNIE ROTH
 Mr. and Mrs. James T. Blair, III
ESTHER ROTSKOFF
 Friends At Lewin - Mathes Co.
 The Schneiders
HATTIE RUBIN
 Mr. and Mrs. Nat Lurie
PHILIP C. RUBIN
 Mr. and Mrs. M. E. Aronoff
 Mr. and Mrs. Harold Bressler
 Mr. and Mrs. Samuel C. Pass
 Mr. and Mrs. Max A. Horwitz
 Mr. and Mrs. David Stein
JACOB RUDMAN
 Mr. and Mrs. Joseph N. Bloom
 Mr. and Mrs. Samuel Friedman
 Dr. and Mrs. Milton H. Jasper
 Mr. and Mrs. Robert L. Shifrin
JOSEPH RUDIKOFF
 Mr. and Mrs. Howard Pattiz
PAULINE SAIFER
 Mr. and Mrs. Jason Kavin
MIKE SAMUELS
 Mr. and Mrs. Al D. Goldstein
 Mr. and Mrs. Ludwig Wolf
NETTIE SAMUELS
 Dr. and Mrs. Arthur Bortnick
 Mr. and Mrs. Harry S. Quicksilver
BEN SANDERS
 Dr. and Mrs. Clarence T. Eckert
WILL SAVIN
 Mr. and Mrs. M. L. Raskin
SAMUEL SCHASCH
 Mr. and Mrs. Alvin D. Goldstein
MORRIS SCHWABE
 Mr. and Mrs. Sam Hoffman
 Mr. and Mrs. Irvin Susman
MRS. GENE SCHWARTZ
 Mr. and Mrs. Leo Rosen
MAURICE SCHWEITZER
 Mr. and Mrs. Samuel D. Cohen
 Mr. and Mrs. Sam Cohen
 Mr. and Mrs. Simon Edison
 Mr. and Mrs. Jerome J. Marx

In Memory of Donor
 Mr. and Mrs. Sam J. Bronstein
 Mr. and Mrs. Louis Tiger
GEROLD SCISSORS
 Dr. and Mrs. Arthur Bortnick
ARTHUR A. SCHARFF, SR.
 Dr. and Mrs. Harry Agress
 Mr. and Mrs. Lewis Bettman
 Mrs. Ruth S. Block
 Mr. and Mrs. Berney Harris
 Mr. and Mrs. Peter H. Husch
 Mr. and Mrs. Hank S. Iglauer
 Mr. and Mrs. John Isaacs, Jr.
 Mr. and Mrs. Lee I. Kaufman
 Mr. and Mrs. Robert Lesser
 Mr. and Mrs. J. Melvin Levi
 Mr. and Mrs. Lawton Levy
 Miss Violet Levy
 Mr. and Mrs. Willard Levy
 Mr. and Mrs. Harry E. Lieberman
 Mr. and Mrs. Harry W. Loeb
 Mr. and Mrs. Ralph Lowenbaum
 Dr. and Mrs. Milton H. Meyerhardt
 Mr. and Mrs. Gene Peterman
 Mr. and Mrs. Richard Prager
 Mr. and Mrs. Milton Price
 Mr. and Mrs. Philip Rashbaum
 Mr. and Mrs. Joseph F. Ruwitch
 Mrs. Hilda L. Sale
 Dr. and Mrs. Harold Scheff
 Mr. and Mrs. John M. Shoenberg
 Mr. and Mrs. Sam Shure
 Mr. and Mrs. Edward Silverman
 Dr. and Mrs. P. D. Stahl
 Mr. and Mrs. Charles J. Steiner
 Mr. and Mrs. Henry H. Stern
 Mr. and Mrs. Seymour Wallas
 Mrs. Della Weil
NAOMI SCHNEIDER
 Mr. and Mrs. Sydney I. Asher
 Mr. and Mrs. Richard H. Buell
 Mr. and Mrs. Milton Cohen
 Mr. and Mrs. Meyer M. Fishman
 Mr. and Mrs. Ralph M. Friedman
 Mr. and Mrs. Emanuel Fuhrer
 Dr. and Mrs. Milton H. Jasper
 Mr. and Mrs. Harry L. Laba
 Mr. and Mrs. Stanley Lentin
 Mr. and Mrs. Abe Lieberman
 Mr. and Mrs. Carl Pass
 Mr. and Mrs. Leslie Roth
 Mr. and Mrs. Irving Schiffman
 Mr. and Mrs. Sol Shakofsky
 Mr. and Mrs. Harry Sherman
 Mr. and Mrs. David Spector
 Mr. and Mrs. Henry H. Stern
 Dr. and Mrs. Jacob Stolar
 Mr. and Mrs. Morris Weiss
 Mr. and Mrs. Jerome Zellinger
MRS. IRWIN J. SENTURIA
 Mr. Irwin J. Senturia
SOPHIE SHAPIRO (Deceased)
 Mr. and Mrs. John I. Hyatt
 Mr. and Mrs. Carl Martin
JESSIE SHEAR
 Mr. and Mrs. Abe Lieberman
 Mrs. Gus G. Mosinger
HYMEN SHIFRIN
 Mr. and Mrs. Edwin Shifrin
 Mr. and Mrs. Robert Shifrin
 Dr. and Mrs. Richard Sisson
ROSE SIEGEL
 Mr. and Mrs. George Benson
 Flower Fund of St. Louis Car Co.
 Mr. and Mrs. Nathan E. Garber
 Mr. and Mrs. Marcus Haffner
 Mr. and Mrs. Milton Hessel
 Dr. and Mrs. William A. Marmor
 Bud Meissner and St. Louis Car Co.
 Mrs. M. L. Raskin
 Mr. and Mrs. Harry Smith
 Mrs. Ida Sparks
WILLIAM L. SILVERMAN
 Abe Silverman
 Isadore Silverman
MARK E. SILVERSTONE
 Mrs. Betty Pokres
MORRIS SIMON
 Mr. and Mrs. Louis Cohen
 Mr. and Mrs. Harold Linsky
 Mr. and Mrs. Harry Shapiro, Jr.
 Mrs. Sid Sigoloff
MAX SLONIM
 Mr. and Mrs. Arthur Slonim
JOSEPH E. SNYDER
 Dr. and Mrs. A. J. Reiches
YETTA SOKOLIK
 Mr. and Mrs. Eugene Pearlina
MR. SOLOMON
 Mr. and Mrs. Nathan E. Garber
DR. HARRY M. SORKIN
 Mr. and Mrs. Frank Flotken
 Dr. and Mrs. A. J. Reiches
MRS. JACOB SOSNOFF
 Michael Levin
LOUIS STAHL
 Mr. and Mrs. Fred Kling
 Dr. and Mrs. William A. Marmor
 Mr. Max Sigoloff
MORRIS STEINER
 Mr. and Mrs. Robert Nassauer
PAULINE STEINER
 Mr. and Mrs. Nat Lurie
SIMON STERNECK
 Mr. and Mrs. Frank Gellman
 Maxine Marmor
 Mrs. Bertha Rovin
RACHEL STINECYPHER
 Mrs. Abe Kohane
MILTON B. STRAUSS
 Mrs. Leo Bauman
 (Heart Research)
WILLIAM STEINER
 Mr. and Mrs. F. Bert Baer
 Mr. and Mrs. Carl Bauman
 Mrs. Mary Grace Cooper
 Dr. and Mrs. Clarence T. Eckert
 Mr. and Mrs. William B. Eiseman
 Mr. and Mrs. Franklin J. Mange
 Mr. and Mrs. Saville Mayer
 Dr. and Mrs. Harold Scheff
 Mr. and Mrs. Louis Tiger
PEARL TABAK
 Mrs. Betty Pokres
 Mr. and Mrs. Walter Morris
 (Dr. Herbert Mazur Memorial Fund)
CARL TEGUNS
 Mrs. Abe Kohane
NATHAN TEITELBAUM
 Dr. and Mrs. Harry Cutler
 Earl Susman
 Herman Willer
MARCUS TREIMAN
 Dr. and Mrs. Gilbert N. Lassar

In Memory of Donor
MIRIAM F. TUCKER
 Mr. and Mrs. Harry Milton
 Mr. and Mrs. Milton F. Tucker
ANNA SAIFER TOBER
 Mr. and Mrs. M. E. Aronoff
 Mr. and Mrs. F. Bert Baer
 Mr. and Mrs. Oscar Brand
 Mr. and Mrs. Charles Baskowitz
 Mr. and Mrs. Paul H. Berwald
 Arnold, Belle and Esther Block
 Mr. and Mrs. Sam J. Bronstein
 Mrs. Ralph D. Cohen
 Mr. and Mrs. Sidney Cohen
 Mr. and Mrs. Sam Cohen
 Mr. and Mrs. Harold Dubinsky
 Mr. and Mrs. Melvin Dubinsky
 Simon Edison
 Mr. and Mrs. Alfred C. Einstein
 Mrs. I. H. Friedman
 Mr. and Mrs. Melville Friedman
 Mr. and Mrs. Eugene Glick
 Mr. and Mrs. Jerome Glick
 Mrs. Ida Glick
 Lucy Gold
 Dr. and Mrs. Alfred Goldman
 Mr. and Mrs. Philip N. Hirsch
 Mr. and Mrs. M. Myron Hochman
 Mr. and Mrs. Jason Kavin
 Mr. and Mrs. Sam Langsdorf
 Mr. and Mrs. Frank Gellman
 Mr. and Mrs. Karol Korngold
 Mr. and Mrs. Rodrick J. Lewin
 Mr. and Mrs. Louis Liebson
 Mr. and Mrs. Al Loeb
 Mr. and Mrs. Harry W. Loeb
 Dr. Paul Lowenstein
 Mr. and Mrs. Nathan Mathes
 Dr. and Mrs. I. C. Middleman
 Ida Monke
 Mr. and Mrs. Carl Pass
 Mr. and Mrs. Jules Pass
 Mr. and Mrs. Isadore Pass
 Mr. and Mrs. Samuel C. Pass
 Mrs. Dora K. Rosen
 Mr. and Mrs. Leo Roman
 Mr. and Mrs. Robert Rosenheim
 Mrs. Irene S. Rubin
 Mr. and Mrs. Irvin M. Rubenstein
 Theodore R. Samuels
 Mrs. Alexander Schonwald
 Mr. and Mrs. Eli Schwartz
 Mr. and Mrs. Harry, Shapiro, Jr.
 Mr. and Mrs. Charles J. Steiner
 Mrs. Herman Strauss
 Mr. and Mrs. Louis Tiger
 Mr. and Mrs. Percy Tucker
 Mr. and Mrs. Meyer Weil
 Mrs. Pauline A. Wittcoff
JACK UDELL
 Mr. and Mrs. Isadore Pass
MRS. BORDEN S. VEEDER
 Mr. and Mrs. Sam Langsdorf
SELIG VICTOR
 Mr. and Mrs. Albert J. Gerber
SOPHIE WALLERSTEIN
 Mr. and Mrs. K. F. Sherman
HENRY WEINER
 Mr. and Mrs. Marcus Haffner
HENRY R. WEISELS
 Mrs. Henry R. Weisels
RAY R. WISE
 Mrs. Harry Abraham
 Mr. and Mrs. Victor N. Friedman
 Mr. and Mrs. Peter H. Husch
 Mrs. Sam Minner
 Mrs. Frieda S. Novoson
LEO WOLFF
 Mr. and Mrs. Jake Jacobs
MINNIE WORTH
 Mr. and Mrs. Edward Ruprecht
EMMA L. WEINSTOCK
 Mr. and Mrs. J. Arthur Baer, II
 Mr. and Mrs. James T. Blair, III
 Mr. and Mrs. Richard H. Buell
 Mrs. Ralph D. Cohen
 Mr. and Mrs. Irving Londy
 Mrs. Jacob H. Epstein
 Mr. and Mrs. Leo Epstein
 Mr. and Mrs. Milton E. Freund, Jr.
 Mrs. Josephine Herzfeld
 Mr. and Mrs. Herman Heyman
 Mr. and Mrs. H. S. Iglauer
 Mr. and Mrs. James M. Lederer
 Mrs. Esther B. Miller
 Mr. and Mrs. Malcolm Frank
 Mr. and Mrs. Joyce Portnoy
 Mr. and Mrs. Edward F. Ruprecht
 Mrs. Arthur A. Scharff, Sr.
 Mr. and Mrs. Ivan Silberman
 Mr. and Mrs. Ben Steinbach
 Earl Susman
 Herman Willer
 Frank P. Wolff
 Mr. and Mrs. Joseph Tucker
ROBERT S. WEINSTOCK, JR.
 Mr. and Mrs. Seymour T. R. Abt
 (Heart Fund)
 Dr. and Mrs. Harry Agress
 Mr. and Mrs. Joseph Arndt, Jr.
 Mr. and Mrs. Jerome Barker
 Dr. and Mrs. Martin Bergmann
 (Cardiac Surgery Fund)
 Mrs. Ralph D. Cohen
 Richard B. Cronheim
 Mr. and Mrs. William B. Eiseman
 Mrs. Sol H. Engel
 Mr. and Mrs. Sam Falk
 Mr. and Mrs. S. E. Freund
 Mr. and Mrs. Kurt Horn
 Mr. and Mrs. Ralph W. Kalish
 Mrs. Leonard Kushins
 Mr. and Mrs. Sam Langsdorf
 Mrs. Marjorie Frank Lesser
 Mr. and Mrs. Abe Lieberman
 Mr. and Mrs. Carl Lippman
 (Heart Lung Fund)
 Mr. and Mrs. Ralph Lowenbaum
 Mr. and Mrs. Melvin J. Mednikow
 Mr. and Mrs. Eric P. Newman
 Mr. and Mrs. Richard Prager
 Mr. and Mrs. Louis Putzel
 Dr. and Mrs. Aaron Reiches
 Mr. and Mrs. Lawrence K. Roos
 Mr. and Mrs. Allan Ross
 Ann Ross
 Mr. and Mrs. Sidney I. Rothschild, Jr.
 Mr. and Mrs. Edward Ruprecht
 Mr. and Mrs. Joseph F. Ruwitech
 Mr. and Mrs. William H. Schield
 Dr. and Mrs. Alfred S. Schwartz
 Mr. and Mrs. Richard A. Shoninger
 Mr. and Mrs. Dan Siegel
 Mr. and Mrs. Louis E. Westheimer
 Mr. and Mrs. Joseph Tucker

In Memory of Donor
EDWARD ZABOL
 Mr. and Mrs. Leonard Newmark
DR. LOUIS G. ZELSON
 Sarah Cohen
TILLIE ZEMLYN
 Dr. Paul S. Lowenstein
IN MEMORIAM
 Mr. and Mrs. Joseph Silverstein
In Honor of Donor
MRS. HENRY BLATH
 (80th Birthday)
 Mrs. Walter Heiman
 Mrs. Kurt Mansbacher
MRS. ADOLPH SINGER
 (80th Birthday)
 Mrs. Edward Block
 Mr. and Mrs. Henry V. Putzel
 Dr. and Mrs. Llewellyn Sale, Jr.
MR. AND MRS. MILTON KESSELL
 (30th Anniversary)
 Mr. and Mrs. Lester Diamant
 Dr. and Mrs. Joseph B. Kendis
 Mr. and Mrs. Lester Lowenstein
 Mr. and Mrs. Raymond Marks
MRS. BERTHA FREED
 (80th Birthday)
 Mr. and Mrs. Bert Bendix
 Mrs. Adolph Buell
 Mr. and Mrs. Milton Cohen
 Dr. and Mrs. Gerhard E. Gruenfeld
 Mr. and Mrs. Sidney Landau
 Mrs. Henry Solomon
MRS. HARRY MYERS (80th Birthday)
 Mrs. Adolph Buell
MRS. ALVIN D. GOLDMAN
 (75th Birthday)
 Mrs. A. Rosenberger
 Mr. and Mrs. Millard A. Waldheim
BERNHARD LITTMANN
 (75th Birthday)
 Mr. and Mrs. William B. Eiseman
 Mr. and Mrs. Edward Glik
 Dr. and Mrs. Richard Weiss
MRS. SOL MEYER (75th Birthday)
 Mrs. Oscar S. Marx
MRS. CARL GLASER (70th Birthday)
 Mrs. Adolph Buell
 Mrs. Sidney Landau
MRS. ELLY HAAS (70th Birthday)
 Mr. and Mrs. Curt B. Levi
EDWIN LEVIS (70th Birthday)
 Mr. and Mrs. Irvin Beitman, Jr.
 Mrs. M. Erwin Bry
 Mr. and Mrs. Jack Desbecker
 Mrs. Harry L. Franc, Sr.
 Mr. and Mrs. Harry L. Franc, Jr.
 Dr. and Mrs. Clarence T. Eckert
 Mr. and Mrs. Edward Greensfelder
 Mrs. Sanford Jacobs
 Mr. and Mrs. Irvin S. Lang
 Mrs. Harry Lesser
 Mr. and Mrs. Lawton Levy
 Mr. and Mrs. Willard Levy
 Mr. and Mrs. Ben M. Loeb
 Mr. and Mrs. Louis Putzel
 Mr. and Mrs. Milton Price
 Mr. and Mrs. Marcus S. Rice
 Mr. and Mrs. Earl Rosen
 Mr. and Mrs. Morris Rosenthal
 Mr. and Mrs. Joseph F. Ruwitech
 Dr. and Mrs. Llewellyn Sale, Sr.
 Mr. and Mrs. Julian G. Samuels, Sr.
 Mr. and Mrs. Theodore R. Samuels
 Mr. and Mrs. Gordon Scherck
 Mr. and Mrs. Harry Milton
 Mr. and Mrs. Herbert Schiele
 Mr. and Mrs. John M. Shoenberg
 Mr. and Mrs. Sydney Shoenberg, Sr.
 Mr. and Mrs. Richard A. Shoninger
 Dr. and Mrs. P. D. Stahl
 Mr. and Mrs. Henry H. Stern
 Mrs. Herman Strauss
 Mrs. Paul Treuman
 Mr. and Mrs. Millard A. Waldheim
MRS. ROBERT V. FRIEDMAN
 (70th Birthday)
 Mr. and Mrs. Lawton Levy
 Mr. and Mrs. John M. Shoenberg
 Mr. and Mrs. Sydney M. Shoenberg, Sr.
 Mr. and Mrs. Sydney M. Shoenberg, Jr.
LAWTON LEVY (60th Birthday)
 Mr. and Mrs. Oscar Brand
 Mr. and Mrs. Sam Langsdorf
 Mr. and Mrs. Earl Rosen
 Dr. and Mrs. Llewellyn Sale, Jr.
 Mr. and Mrs. Jay V. Zimmerman
DR. ARTHUR E. STRAUSS
 (70th Birthday)
 Mr. and Mrs. Samuel M. Friedman
 Dr. and Mrs. Joseph Kendis
 Dr. and Mrs. Milton H. Meyerhardt
 Dr. and Mrs. Richard S. Weiss
ALVIN ABRAMSON (65th Birthday)
 Mr. and Mrs. Leo Epstein
 Mr. and Mrs. Sol Flammer
 Mr. and Mrs. Herman W. Heyman
MRS. STELLA SCHWANDER
 (85th Birthday)
 Mr. and Mrs. Sol Flammer
 Mr. and Mrs. S. E. Freund
MRS. BEN SHIFRIN (65th Birthday)
 Mrs. Ida Glick
 Mrs. Charles Koven
HARRY HAMMERMAN
 (50th Birthday)
 Mr. and Mrs. Julius A. Zimmerman
 (Jackie Sue Margulis Memorial Fund)
DR. LLEWELLYN SALE, JR.
 (45th Birthday)
 Mrs. Edward S. Block
 Mr. and Mrs. Edwin B. Meissner, Jr.
JOHN M. SHOENBERG
 (45th Birthday)
 Richard B. Cronheim
 Mrs. Marian Jeane Kline
 Mr. and Mrs. Willard Levy
 Mr. and Mrs. Joseph F. Ruwitech
 Mr. and Mrs. Richard K. Weil
 Mr. and Mrs. Millard A. Waldheim
MRS. LEWIS T. APPLE (Birthday)
 Dr. and Mrs. Llewellyn Sale, Sr.
 Mr. and Mrs. Sydney M. Shoenberg, Sr.
MRS. E. B. BERKOWITZ (Birthday)
 Mrs. Harry Sandperl
ARTHUR A. EPSTEIN (Birthday)
 Dr. and Mrs. Aaron Reiches
DR. I. JEROME FLANCE (Birthday)
 Mrs. Henry R. Weisels

In Honor of Donor
MRS. ANNA HANDELMAN (Birthday)
 Mr. and Mrs. Leslie Portnoy
MRS. T. LEWIN (Birthday)
 Miss Leah Chackes
 Mrs. Fred Kling
MRS. HERMAN MAGNUS (Birthday)
 Mr. and Mrs. Sam Langsdorf
REYNOLDS MEYER (Birthday)
 Mr. and Mrs. Sidney Landau
MRS. AARON RAUHF (Birthday)
 Mr. and Mrs. Sydney M. Shoenberg, Sr.
JOSEPH F. RUWITCH (Birthday)
 Mr. and Mrs. Edwin B. Meissner, Jr.
MRS. JULIAN G. SAMUELS, SR.
 (Birthday)
 Mrs. Harry L. Franc, Sr.
 Mr. and Mrs. Edward Greensfelder
DR. LLEWELLYN SALE, SR.
 (Birthday)
 Dr. and Mrs. Moyer Fleisher
 Mrs. Winifred Rice
 Mrs. J. Sydney Salkey
 Mr. and Mrs. Arthur Scharff, Jr.
 Mr. and Mrs. Sam Simon
MRS. SAM SIMON (Birthday)
 Mrs. Arthur Scharff, Sr.
LEONARD STRAUSS (Birthday)
 Mr. and Mrs. Leonard Hornbein
MRS. JOSIE WEISS (Birthday)
 Mr. and Mrs. Alvin D. Goldstein
MRS. HANNAH WERTHEIMER
 (Birthday)
 Dr. and Mrs. Clarence T. Eckert
BRUCE ERIC BYERS (Birthday)
 Mr. and Mrs. Paul A. Lux
MRS. JACK LONDON (Birthday)
 Mr. and Mrs. Sydney M. Shoenberg, Sr.
 Mr. and Mrs. Joseph F. Ruwitech
SAM SITEMAN (Birthday)
 Mr. and Mrs. Alvin Siteman
ALFRED STEINER (70th Birthday)
 Mr. and Mrs. F. Bert Baer
 Mr. and Mrs. Louis D. Steiner
 Mr. and Mrs. Henry H. Stern
DR. AND MRS. CHARLES GROSBY
 (55th Wedding Anniversary)
 Mr. and Mrs. Harry Sherman
MR. AND MRS. HUBERT MOOG
 (50th Wedding Anniversary)
 Mr. and Mrs. Walter Reese
MR. AND MRS. SAMUEL NUSSBAUM
 (50th Wedding Anniversary)
 Dr. and Mrs. Aaron Reiches
MR. AND MRS. LEO ROMAN
 (50th Wedding Anniversary)
 Mr. and Mrs. Floyd Friedman
 Mrs. Adele Wolf
MR. AND MRS. F. K. LEVY
 (45th Wedding Anniversary)
 Mr. and Mrs. Milton Cohen
DR. AND MRS. HERMAN MEYER
 (35th Anniversary)
 Mr. and Mrs. Harry Schasch
MR. AND MRS. HARRY SACHS
 (40th Anniversary)
 Mr. and Mrs. Milton Cohen
MR. AND MRS. GEORGE SHERMAN
 (40th Anniversary)
 Leona Fuchs
 Rose Fuchs
MR. AND MRS. NATHAN E. SPILKER
 (40th Anniversary)
 Mr. and Mrs. Harry S. Quicksilver
 Dr. and Mrs. Richard S. Weiss
MR. AND MRS. LOUIS D. STEINER
 (40th Anniversary)
 Mrs. Edgar L. Barkhouse
 Mr. and Mrs. Simon Edison
 Mr. and Mrs. S. E. Freund
 Mr. and Mrs. Ralph W. Kalish
 Mr. and Mrs. Jesse Myer, Jr.
 Mrs. Henry Rice
 Mrs. Harry Sandperl
 Mr. and Mrs. William H. Schield
 Mr. and Mrs. Ben Shifrin
 Mr. and Mrs. Henry H. Stern
MR. AND MRS. IRVIN BETTMAN, JR.
 (30th Anniversary)
 Mr. and Mrs. Joseph F. Ruwitech
MR. AND MRS. OSCAR BRAND
 (30th Anniversary)
 Mr. and Mrs. John Isaacs, Jr.
 Mr. and Mrs. Lawton Levy
MR. AND MRS. JOHN ISAACS, JR.
 (30th Anniversary)
 Mr. and Mrs. Oscar Brand
MR. AND MRS. ELMER ABRAMSON
 (25th Anniversary)
 Mrs. L. C. Weinrobe
MR. AND MRS. LOUIS K. CASSETT
 (25th Anniversary)
 Dr. and Mrs. Milton H. Meyerhardt
 Mr. and Mrs. Hanford Sher
MR. AND MRS. HARRY L. FRANC, JR.
 (25th Anniversary)
 Mr. and Mrs. Robert Lesser
 Paul Putzel
 Miss Mary Rains
 Mr. and Mrs. Sydney Shoenberg, Sr.
MR. AND MRS. MAURICE MUSHLIN
 (25th Anniversary)
 Mr. and Mrs. Harry Spitzer
MR. AND MRS. SAMUEL SHURE
 (30th Anniversary)
 Mr. and Mrs. Harry L. Franc, Jr.
 Mr. and Mrs. John Isaacs, Jr.
MR. AND MRS. ABE SMALL
 (25th Anniversary)
 Mr. and Mrs. Arthur E. Sherman
DR. AND MRS. IRVIN WEISMAN
 (25th Anniversary)
 Dr. and Mrs. M. D. Marcus
MR. AND MRS. HERMAN HEYMAN
 (35th Anniversary)
 Dr. and Mrs. Robert H. Friedman
MR. AND MRS. JERALD ROSENBLUM
 (3rd Anniversary)
 Mrs. Joseph A. Berger
MR. AND MRS. ALVIN BARNETT
 (Anniversary)
 Mrs. David Komm
MR. AND MRS. MELVIN DEGROOTE
 (Anniversary)
 Mr. and Mrs. Marc C. Birge
DR. AND MRS. B. Y. GLASSBERG
 (Anniversary)
 Dr. and Mrs. Joseph B. Kendis
MR. AND MRS. FRED GRAND-JEAN
 (Anniversary)
 Mr. and Mrs. Sam Cohen

In Honor of Donor
MR. AND MRS. HERMAN HUSCH
 (Anniversary)
 Mr. and Mrs. Peter H. Husch
MR. AND MRS. JACK LONDON
 (Anniversary)
 Mr. and Mrs. Sydney M. Shoenberg, Sr.
MR. AND MRS. J. A. SCHWEIG
 (Anniversary)
 Mr. and Mrs. Edward Greensfelder
MR. AND MRS. MORRIS SHENKER
 (Anniversary)
 Mrs. David Komm
DR. AND MRS. LLEWELLYN SALE, SR. (Anniversary)
 Dr. and Mrs. Llewellyn Sale, Jr.
HAROLD E. GOLDBERG
 (Chanuka Gift)
 "A Friend"
IN HONOR OF THE NEW YEAR
 Mrs. David Fischer
IRVING STONE (His Retirement)
 Mrs. Ruth Herwitz
MR. AND MRS. SAMUEL FLEISCHMANN
 (Birth of Granddaughter)
 Mr. and Mrs. Carl Pass
MR. AND MRS. H. KORNBUM
 (Birth of First Grandchild)
 Mr. and Mrs. Nat Lurie
MR. AND MRS. PHILIP MARMOR
 (Birth of Grandson)
 Mr. and Mrs. Samuel M. Friedman
MR. AND MRS. LUDWIG PRIEBAT
 (Birth of First Grandchild)
 Mrs. Kurt Mansbacher
MR. AND MRS. CARL ZIMMERMAN
 (Birth of First Grandchild)
 Mr. and Mrs. Louis Hammerman
MRS. HARRY BORTNICK
 Dr. and Mrs. Arthur Bortnick
MRS. RUDY COHN
 Tatie Seidel
MRS. SARAH CUNNINGHAM
 Dr. and Mrs. Arthur Bortnick
MELVIN DEGROOTE
 Dr. and Mrs. B. Y. Glassberg
DOLORES ETTLINGER
 Deedie Seidel
MARK MOLASKY
 Dr. and Mrs. I. Jerome Flance
 Dr. and Mrs. Michael M. Karl
MRS. HARRY QUICKSILVER
 Dr. and Mrs. Arthur Bortnick
DAVID WEINHAUS
 Drs. Senturia, Schnoebelen, Cherre
 and Susman
DR. ARTHUR R. BORTNICK
 (Recovery)
 Mr. and Mrs. Dave Weinhaus
MRS. LILLIAN COHN (Recovery)
 Mr. and Mrs. Philip Marmor
RABBI ABRAHAM E. HALPERN
 (Recovery)
 Mr. and Mrs. Carl Pass
DAVE AGATSTEIN (Recovery)
 Mr. and Mrs. Paul Sigal
MORRIS ARKY (Recovery)
 Yavitz Family
MRS. SYDNEY ASHER (Recovery)
 Mr. and Mrs. Carl Pass
RUBY BENKOVITZ (Recovery)
 Mr. and Mrs. Carl Pass
ROBERT BLOCK (Recovery)
 Mr. and Mrs. Harry Milton
MRS. MARTIN BRAND (Recovery)
 Mr. and Mrs. Abe Lieberman
RALPH COHEN (Recovery)
 Dora Hamburg
 Mrs. David R. Komm
 Dr. and Mrs. Sam Rosenkranz
BARNEY DIAMOND (Recovery)
 Mr. and Mrs. Isadore Pass
RALPH FRIEDMAN (Recovery)
 Mr. and Mrs. M. L. Flotken
 Dr. and Mrs. Milton H. Jasper
 Mr. and Mrs. Isadore Pass
MRS. JOSEPH GOLDSTEIN
 (Recovery)
 Mr. and Mrs. Max W. Kramer
 Mr. and Mrs. Isadore Pass
FOR HER RECOVERY AND HEALTH
 Mrs. Sarah Goodman
JULIUS GREENSPOON (Recovery)
 Mr. and Mrs. Bernard Lieberman
MRS. ISRAEL HEIFETZ (Recovery)
 The Frenzels
 Mr. and Mrs. Carl Pass
SAMUEL INTRATER (Recovery)
 Max Sigoloff
LOUIS ISAACS (Recovery)
 Sadie Kohn
MOTHER OF MRS. JOE KAISER
 (Recovery)
 Mr. and Mrs. Nat Lurie
MACK LEVY (Recovery)
 Mr. and Mrs. Ben Steinbach
DR. WILLIAM MARMOR (Recovery)
 Mr. and Mrs. Rubin Cohen
 Mr. and Mrs. Neal Rosenberg
MRS. NATHAN MATHES (Recovery)
 Mrs. Jack H. Burack
MRS. HARRY W. LOEB (Recovery)
 Board of The Jewish Hospital
 Auxiliary
 Mrs. Walter Hamburg
 Mrs. Jake Nathanson
 Mrs. Dorothy and Tiny Silverberg
 Mr. and Mrs. Henry H. Stern
LESTER NIEMAN (Recovery)
 Mr. and Mrs. M. L. Flotken
 Mr. and Mrs. Samuel Pass
MRS. SAMUEL REYNOLDS
 (Recovery)
 Mr. and Mrs. J. B. Charak
 Mrs. David Komm
 Mr. and Mrs. Charles Yalem
L. J. ROSS (Recovery)
 Mr. and Mrs. Neal Rosenberg
MRS. MARJORY ROTH (Recovery)
 Mr. and Mrs. Abe Lieberman
JULES SAGER (Recovery)
 Mr. and Mrs. Abe Lieberman
CHARLES SANOFSKY (Recovery)
 Mr. and Mrs. Carl Pass
 Mr. and Mrs. Isadore Pass
 Mr. and Mrs. Dave Weinhaus
 Mr. and Mrs. David Wechsler
SIDNEY SCHOEN (Recovery)
 Mr. and Mrs. Bernard Lieberman

In Honor of Donor
 MRS. SIDNEY SCHOEN (Recovery)
 Mr. and Mrs. Abe Lieberman
 DR. SOL WEBER (Recovery)
 Dorothee Block
 BARNEY WIDES (Recovery)
 Mr. and Mrs. Floyd Friedman
 Mr. and Mrs. A. Yavitz
 MRS. SAM ZIMMERMAN (Recovery)
 Yavitz Family
 MRS. PHILLIP MOSTOVOY
 (Recovery)
 Mr. and Mrs. Carl Pass
 JACK TZINBERG (Recovery)
 Mr. and Mrs. Carl Pass
 Mr. and Mrs. Isadore Pass
 TERRY SHANFELD (Recovery)
 Mrs. I. E. Frank
 MRS. WILLIAM FRENZEL (Recovery)
 Mr. and Mrs. Isadore Pass
 Mr. and Mrs. Harry Sherman
 DAVID GROSSER (Recovery)
 Mr. and Mrs. Isadore Pass
 OSCAR BRAND (Recovery)
 Mrs. Bess Biederman
 Dorothy Friedman
 Mrs. Ida Glick
 Mr. and Mrs. Harry Lieberman
 The Gene Schneiders
 The Harry Schneiders
 The Murray Schneiders
 Dr. and Mrs. P. D. Stahl
 BOBBY SCHULTZ (Recovery)
 Mr. and Mrs. Harry D. Schneider
 DR. JOSEPH ORENSTEIN (Recovery)
 Mr. and Mrs. Arthur Bromberg
 MR. AND MRS. NATHAN TUREEN
 (Recovery)
 Mr. and Mrs. Harry Laba
 Mr. and Mrs. Harry D. Schneider
 MORRIE COOPERMAN (Recovery)
 The Yavitz Family
 HAROLD SILVERSTEIN
 Mr. and Mrs. Harry Rothman

Donations
 Rabbi Abraham E. Halpern
 Emil Sakowski
 Charles J. Steiner
 Mrs. Clover H. Seelig
 Peter Zeumann

ARTHUR E. STRAUSS VISITING PHYSICIAN FUND

In Honor of Donor
 70th BIRTHDAY OF
 DR. ARTHUR E. STRAUSS
 W. W. Heath
 Morris Novack
 Burton C. Bernard
 Mildred Laddy
 Sam Graber
 Rose Guinzburg
 William H. Knip
 Harvey A. Friedman
 Gussie Rovics
 J. Schlesinger
 Marilyn Fleishman
 Berney Harris
 Bettie Simon
 Mae Van Camp
 Hope Komm
 Patricia Palmer
 Harold Newman
 George Kettelkamp
 Albert Schweizer
 Benjamin Tepper
 Edwin Levis
 Ruth Friedman
 Rebecca Agress
 Harry Rich
 Nathan Tepper
 William Blanke
 Myrtle Morris
 Raymond Cox
 Frieda Brackebusch
 Tillie Abromson
 Mae Neidenberg
 Theresa Epstein
 Daniel A. Glaser
 Rose Bukstein
 Louis Graber
 Necoma Seigel
 Mr. and Mrs. Dave Sheinbein
 Norman Bierman
 David Stein
 Sophie Bishop
 Ellen F. Jackson
 Dr. Herman T. Blumenthal
 I. E. Goldstein
 S. C. Sachs
 Louis Sakowsky
 Arthur Salfar
 Wm. N. Eisendrath, Jr.
 N. S. Bender
 Ira M. Lang
 Clara Lackterman
 Marie Mathieu
 L. H. Bauman
 Sarah Bierman
 Bessie Adler
 Howard F. Baer
 Mollie Koloditzky
 Goldye K. Price
 Sam Londe
 Mrs. Sam Goldenhersh
 Lena Dunnigan
 John W. Brasse
 Mrs. Jean Darling
 Mrs. David Grossberg
 Mrs. Jas. E. Turner
 Mrs. Betty Laba
 Mrs. Helen Wolf
 Mrs. Rose Harris
 Mrs. Ethel Gast
 Mrs. Gerald K. Presberg
 Sigmond Losos
 Julius Cohen
 Morton J. May
 Dr. Walter R. Hewitt
 Sigmond Reinemund
 Mrs. Mary Gould
 Miss Esther Sigan
 Louis Blumenfeld
 Ben Kaufman
 Mrs. Florence Posey
 Mr. Henry Seidel
 Mrs. Carolyn Lutz
 Mrs. Valma Glass
 Mrs. Betty Ambrow
 Miss Rose A. Smith
 Mrs. Annette Wortman
 Miss Hannah Reynolds
 Miss Kathryn Barclay
 Arthur C. Hoehn

In Honor of Donor
 Raymond DeVinney
 Virgil Shipley
 Max Weinberg
 Mrs. Ethyle Weinstein
 Dr. Neuton S. Stern
 Mr. Dan Newman
 Mrs. Ida Rochman
 Mrs. Bertha Ebert
 Jacob Beck
 Mrs. H. Rottersman
 Sam Pessin
 Samuel Unterberger
 Louis Vagnino
 Mrs. Paula Mitchell
 Mrs. Margaret Rodgers
 Mrs. Walentyna Akimoff
 Mrs. Jessie May Lesser
 Mrs. Lester Sterling
 Joseph L. Ivanhoe
 Mrs. Lillian Coro
 Morton D. Barker, Sr.
 A. H. Goodman
 Joel Gilfiks
 Anatol Horowitz
 Mrs. Edna Feldman
 Mrs. Monta Martin
 Mr. Harry Samelson
 Mr. Isadore Fry
 Mr. James Hawkins
 Mr. Thomas Vassonie
 Mr. Abraham Halpern
 Mr. John Rothschild
 Mr. Hyman Rosenberg
 Mr. Julius Funk
 Mr. Richard K. Weil
 The Vitamin Store
 Mrs. Frances Lerman
 Mr. Sam Levin
 Mrs. Paul Gentile
 Mrs. Mary Gentile
 Dr. Wm. H. Schield
 Dr. Burchard Pruett
 Louis Raskas
 H. W. Henry
 Mrs. Sally Waldheim
 Morton D. May
 Rabbi F. M. Isserman
 Jack H. Burack
 Mrs. Ann C. Field
 David P. Wohl
 Fritz Silberman
 Paul Lyss
 L. S. Hemple
 Sam Freedman
 A. Tober
 Percy S. Block
 Harold Bialock
 Mrs. Elizabeth Cohen
 Miss Josie Weil
 Mr. M. E. Seidel
 Mr. and Mrs. M. W. Freund
 Mrs. Esther Glick
 Mr. Leo C. Fuller
 Mr. Eugene J. Shapiro
 Mr. Gordon Scherck
 Mr. and Mrs. Irvin Bettman
 Mr. R. J. Wolfheim
 Mr. Alfred Fleishman
 Mr. Charles Weiss
 Mrs. Marie Eisenstadt
 Mr. Arthur Lieber, Jr.
 Mrs. Clemence S. Lieber
 Mr. Leon Wax
 Mr. Sam Brown
 Mrs. Blanche Goldman
 Mr. Harry I. Gale
 Mr. Louis Rothschild
 Mr. C. H. Yalem
 Mrs. David Biederman
 Miss Jennie Gershenson
 Mrs. Rosa Rosenbaum
 Mr. Ben Emert
 Dr. D. S. Pruett
 Mr. Albert Aloe
 Mrs. Clara Magence
 Mrs. Jeanette Pareira
 Sam Intrater
 Mr. Mannie Schemrer
 Mrs. Betty Cornbleet
 Mrs. Dorothy Abraham
 Mr. Robert Mayer
 Mrs. Bernard Greensfelder
 Mrs. Marjorie Loeb
 Mr. John J. Roos
 Mr. Hyme Becker
 Mr. Isadore Fein
 Mr. Lester P. Ackerman
 Mrs. Dorothy Schmitz
 Mrs. Dorothy Catlin
 Louis Weiss
 Mrs. Sol Kaiser
 Michael Cutter
 Joseph Glaser, Jr.
 Max Sigoloff
 John P. Hanratty
 Harry Esserman
 Alfred F. Steiner
 Mrs. Esther Baron
 Mr. Gerald N. Harris
 Mrs. Leonore Goldstein
 Charles E. Becker
 Jesse A. Wolfort
 Mr. and Mrs. Milton Tucker
 Mr. Millard A. Waldheim
 Mr. Willard Levy
 Mr. A. Fuller Claser
 Mrs. May G. Rice
 Mr. Al Sacks
 Mr. Meyer Cohen
 Mrs. Carol Leighton
 John M. Shoenberg
 Mrs. Julius Glaser
 Harry Franc
 Milton D. Mendle
 Mr. J. M. Arndt
 Mrs. Ethel G. Mayer
 Mrs. Carolyn B. Goldman
 Harry Edison
 Sydney M. Shoenberg
 Edward Greensfelder
 Louis Tiger
 Sam J. Gans
 Louis Stein
 Morris E. Jick
 Edward A. Burke
 S. S. Bearman
 Flora B. Korngold
 Rollin A. Warner
 June T. Rauschkolb
 Eldon W. Mason
 Mrs. Leon Priwer

In Honor of Donor
 Stix Friedman
 Anita Cunningham
 Dr. and Mrs. P. D. Stahl
 Adrian Lamb
 Mary Goldsmith
 Mayme Louise Slota
 Mrs. Goldie Fishman
 Dr. S. D. Soule
 Eva Millius Goldsmith
 John R. Kuebler, Jr.
 Morris H. Rosenthal
 Jay G. Rice
 Lee Rosenblum
 Joseph Peskind
 Evelyn B. Treumann
 Lynn Weisskopf
 H. Jasper
 Marie T. Randle
 I. D. Newmark
 Sadie Palkes
 William R. Pollard
 Marjorie R. Bearman
 Sylvia S. Bearman
 Dr. John Plesons
 Mrs. Max Franklin
 Stanley Olshwanger
 Dr. H. D. Rosenbaum
 Mrs. Ernst Jonas
 M. Violet Spooner
 Gussie Zarchik
 A. Silverman
 Mrs. C. H. Zimbalist
 Helen R. Rosenblum
 Phi Delta Epsilon Graduate Club
 William Quinn
 Joseph Magidson, M.D.
 Mrs. Benjamin Levin
 Mrs. Helen McKnight
RECOVERY OF DR. JACK COHEN
 Mrs. T. W. Kelso
MR. EDWIN LEVIS' BIRTHDAY
 Richard K. Weil

SAM AND JEANETTE KOPLAR REHABILITATION EQUIPMENT FUND

In Honor of Donor
MR. AND MRS. SAM KOPLAR'S 50TH WEDDING ANNIVERSARY
 Mr. and Mrs. Jerome Kalishman
 Mr. and Mrs. Simon Spitzer
 Mrs. Earnest J. Eirvin
 LaVerna H. Kennon
 J. G. Probststein
 Irwin J. Meyer
 Mr. and Mrs. Walter Hamburg
 Gertrude Newell
 Mr. and Mrs. Louis Shenker
 Mr. and Mrs. J. H. Grand
 Mr. and Mrs. Milton Katz
 Clarence M. Turley
 Mr. and Mrs. Leo Wieck
 Mrs. Mark C. Steinberg
 Mr. and Mrs. Harold Horwitz
 Mr. Buddy Walton
 Adaline and Jack Simon
 "Hack"
 Mrs. David H. Cohen
 Mr. and Mrs. Irving Edison
 Clara and Jack London
 Mr. and Mrs. Bram J. Lewin
 Mr. and Mrs. Eugene Dreyer
 Mr. and Mrs. Robert Champagne
 Mr. and Mrs. Harold Lieberman
 Mr. and Mrs. Maurice Hirsch
 Mr. and Mrs. Paul Winter
 Mr. and Mrs. Benjamin M. Loeb
 Dorothy K. Abrams
 Walter B. Reed
 Mr. and Mrs. Philip Lichtenstein
 Mr. and Mrs. Roy Brodsky
 Mr. and Mrs. Richard Buell
 Mr. Adolph Rosenberg
 Lottie and Mike Sherman
 Mr. and Mrs. Elliot Stein
 Dr. N. M. Freund
 Mr. and Mrs. Melvin Dubinsky
 Birdie and Julian Samuels
 Mr. and Mrs. Isadore Kronick
 Mr. and Mrs. Wm. Seltzer
 Bernice Knetzger
 Mr. and Mrs. Sam Shenker
 Mr. and Mrs. Abe Katz
 Mr. and Mrs. Sidney Katz
 Mr. and Mrs. Jack Flynn
 Ellen M. Steinberg
 Mrs. Grace Volkening
 Mr. and Mrs. Julius Neuman
 Mr. and Mrs. Percy Cowan
 Hyman G. Stein
 Amanda and Reggie Colton
 Charles Part
 Mrs. I. E. Millstone
 Mrs. Samuel M. Koplar
 Mr. and Mrs. Donald Ross
 Mr. and Mrs. David Grossberg
 Mrs. I. E. Lauer
 Mr. and Mrs. Sidney Cohen
 Elsie and Llewellyn Sale
 Dr. J. G. Probststein
 Norman Probststein
 Thelma Katz
 Dora K. Rosen
 Mr. and Mrs. Paul E. Woodson
 Leo A. Fisher, Jr.
 Mr. and Mrs. Adolph Katz
 Mr. and Mrs. Max Fraenkel
 Mrs. S. E. Koplar
 Violette and Sam Simon
 Mr. and Mrs. Jack Dubinsky
 Mr. and Mrs. Irvin Bettman, Jr.
 Mr. and Mrs. Irvin S. Lang
 Mr. and Mrs. Harry Milton
 Mr. and Mrs. Fred Z. Salomon
IRWIN J. MEYER
 Mr. and Mrs. Sam Koplar
ALVIN D. GOLDMAN RESEARCH FUND
In Memory of Donor
BIRTHDAY OF ALVIN D. GOLDMAN
 Mrs. Alvin D. Goldman
EUGENE DREYER
RALPH LOWENSTEIN
 Mrs. Alvin D. Goldman
In Honor of Donor
MRS. ALVIN D. GOLDMAN'S 75TH BIRTHDAY
 Mr. and Mrs. Gilbert Rosenthal
 Dr. J. G. Probststein
70TH BIRTHDAY OF EDWIN LEVIS
 Mrs. Alvin D. Goldman

ANNIVERSARY AND BIRTHDAY FUND, MR. AND MRS. SYDNEY M. SHOENBERG

In Honor of Donor
 70th BIRTHDAY OF MRS. SYDNEY M. SHOENBERG AND 50th WEDDING ANNIVERSARY OF MR. AND MRS. SYDNEY M. SHOENBERG
 Adaline and Jack Simon
 Mr. and Mrs. Jack A. Jacobs, Jr.
 Will and Mary Lewin
 Ted and Dorothy Schweich
 Mr. and Mrs. David Klee
 Mr. and Mrs. Frank D. Mayer
 Mr. Philip D. Block, Jr.
 Mrs. Bernhard Rosenberg
 Mr. and Mrs. William H. Schield
 Betty and Morris Rosenthal
 Irene and Julian Cohn
 Mr. Richard K. Weil
 Mrs. Ione E. Sandperl
 Mrs. Alvin D. Goldman
 Mrs. Alvin L. Bauman
 Mr. and Mrs. Samuel B. Edison
 Mrs. Abraham K. Selz
 Mrs. David Eiseman, Jr.
 Dr. Harry L. Franc, Sr.
 Mr. and Mrs. Irvin S. Lang
 Dorothea and Louis Rothschild
 Mr. and Mrs. Herbert Frank
 Mrs. J. Sydney Salkey
 Mr. and Mrs. David Wohl
 Mr. James W. Singer, Jr.
 Mrs. Arthur Lieber
 Mr. and Mrs. Alfred Steiner
 Mr. and Mrs. Lewis T. Apple
 Miss Ellen M. Steinberg
 Mr. and Mrs. Oliver H. H. Lebus
 Mr. and Mrs. Herbert N. Arnstein
 Mr. and Mrs. Harvey Austrian
 Mr. and Mrs. Major B. Einstein
 Mr. and Mrs. Harry L. Franc, Jr.
 Mrs. Simon Frank
 Mr. and Mrs. John M. Friedman
 Mr. and Mrs. Edward Greensfelder
 Mr. and Mrs. Leo Greenwald
 Mr. and Mrs. G. L. Harris
 Mr. and Mrs. Jack A. Jacobs
 Mr. and Mrs. Edwin Levis, Sr.
 Mrs. Walter E. Levis
 Mr. and Mrs. Lawton Levy
 Mr. and Mrs. Willard Levy
 Mr. and Mrs. Irving I. Lewine
 Mr. and Mrs. Benjamin Loeb
 Mr. and Mrs. Harry Loeb
 Mr. and Mrs. Jack London
 Mrs. Aaron Rauh
 Mrs. Henry Rice
 Mr. and Mrs. Stanley Richman
 Mrs. Wilton Rubinstein
 Mr. and Mrs. Joseph F. Ruwitch
 Dr. and Mrs. Llewellyn Sale, Sr.
 Dr. and Mrs. Llewellyn Sale, Jr.
 Mr. and Mrs. Julian G. Samuels, Sr.
 Mr. and Mrs. Julian G. Samuels, Jr.
 Mr. and Mrs. Theodore R. Samuels
 Mr. and Mrs. Henry J. Scherck
 Mr. and Mrs. Sam Simon
 Mrs. Mark C. Steinberg
 Mr. and Mrs. Henry H. Stern
 Mr. and Mrs. Paul Ullman
 Mrs. Ralph Weil
 Mr. and Mrs. John M. Friedman

WOHL SPECIAL LIBRARY FUND

In Honor of Donor
MRS. CARLYN WOHL'S BIRTHDAY
 Helen and Walter Wolf
 Mrs. Edward Hartman
 Mrs. Marguerite Abrams
 Mrs. Clara K. London
 Mrs. Bertie Drey Friedman
 Mrs. Alma M. Myer
 Mr. and Mrs. G. Franc
 Mr. and Mrs. William Schield
 Mrs. Edw. Scharff
 Mrs. Virginia Arnstein
 Mrs. Ralph Weil
 Mrs. J. Sydney Salkey
 Mr. and Mrs. Sam Simon
 Mr. and Mrs. Louis Rothschild
 Mrs. Harry Lesser
 Mr. and Mrs. Paul Peltason
 Laura May Isaacson
 Mrs. Ella O. Cohn
 Mrs. Simon M. Frank
 Mrs. Robert V. Friedman
 Mr. and Mrs. Irvin S. Lang
 Mrs. Marjorie Frank Lesser
 Mr. and Mrs. Benjamin Loeb
 Mrs. Henry V. Putzel
 Mrs. Aaron S. Rauh
 Mrs. Henry Rice
 Mr. and Mrs. Joseph F. Ruwitch
 Mrs. Harry Sandperl
 Dr. and Mrs. Harold Scheff
 Mrs. Paul Treuman
 Mr. and Mrs. Paul Ullman

ELSIE K. PROBSTSTEIN-HARRY KOPLAR BRACE FUND

In Memory of Donor
SYLVIA NEWMARK
JOSEPH FELDMAN
MRS. EDITH REDLER
ESTHER RUBIN
 Mr. and Mrs. J. B. Orenstein
RALPH LOWENSTEIN
 Dr. J. G. Probststein
MRS. ELSIE K. PROBSTSTEIN
 Dr. and Mrs. Robert Burstein
 Clara and Jack London
 Mr. and Mrs. George Chaloupsky
 Mr. and Mrs. George Way
 Mrs. Lorraine Kipp
 Dr. Harold Freedman
 Dr. Alvin Goldfarb
 Hyman G. Stein
In Honor of Donor
40TH ANNIVERSARY OF MR. AND MRS. LOU STEINER
 Dr. J. G. Probststein
MRS. S. ORENSTEIN
 (Chanuka Greetings)
 Mr. and Mrs. Jake Orenstein
FRED Z. SALOMON'S BIRTHDAY
 Dr. J. G. Probststein

WEIL ANNIVERSARY FUND

In Honor of Donor
 MR. AND MRS. RICHARD K. WEIL'S
 25TH WEDDING ANNIVERSARY
 Mr. and Mrs. Lester P. Ackerman, Jr.
 Dr. and Mrs. Harry Agness
 Mr. and Mrs. Albert S. Aloe
 Mr. and Mrs. Charles K. Berger
 Mr. and Mrs. Lewis Bettman
 Mr. and Mrs. Norman Bierman
 Mr. and Mrs. Henry Bry
 Mrs. M. Erwin Bry
 Dr. and Mrs. Louis Cohen
 Richard B. Cronheim
 Mr. and Mrs. Saul A. Dubinsky
 Dr. and Mrs. Clarence T. Eckert
 Mr. and Mrs. Major B. Einstein
 Mrs. David Eiseman
 Mr. and Mrs. David Eiseman, III
 Mrs. Harry L. Franc, Sr.
 Mr. and Mrs. John M. Friedman
 Leo C. Fuller
 Mr. and Mrs. Joseph Glaser, Jr.
 Mr. and Mrs. Jack D. Goldman
 Mr. and Mrs. G. L. Harris
 Mr. and Mrs. Peter Husch
 Mr. and Mrs. John Isaacs, Jr.
 Mr. and Mrs. Jack A. Jacobs
 Mrs. Sanford Jacobs
 Mr. and Mrs. I. M. Kay
 Mrs. Marian J. Kline
 Mr. and Mrs. Sam Langsdorf
 Mrs. Harry Lesser
 Mrs. Marjorie Lesser
 Mr. and Mrs. Edwin Levy
 Mr. and Mrs. Lawton Levy
 Mr. and Mrs. Willard Levy
 Mr. and Mrs. Samuel H. Liberman
 Dr. and Mrs. David Littauer
 Mr. and Mrs. Benjamin M. Loeb
 Mr. and Mrs. Harry Loeb
 Louis M. Loeb
 Mr. and Mrs. Ralph Lowenbaum
 Mr. and Mrs. Morton D. May
 Mr. Morton J. May
 Mr. and Mrs. Robert H. Mayer
 Mr. and Mrs. Richard Prager
 Mr. and Mrs. Edwin B. Meissner, Jr.
 Mr. and Mrs. Milton Price
 Mr. and Mrs. Henry V. Putzel
 Mr. and Mrs. Stanley Richman
 Mr. and Mrs. Lawrence K. Roos
 Mrs. Erna Rosenberger
 Mr. and Mrs. John A. Rothschild
 Mrs. Wilton Rubinstein
 Mr. and Mrs. Joseph F. Ruwitch
 Dr. and Mrs. Llewellyn Sale, Jr.
 Mr. and Mrs. Edward R. Samuels
 Mr. and Mrs. Julian G. Samuels, Jr.
 Mr. and Mrs. Theodore Samuels
 Mr. and Mrs. Gordon Scherck
 Mr. and Mrs. Henry Scherck
 Mr. and Mrs. Roger Schwab
 Mr. and Mrs. Edward Schweich
 Mr. and Mrs. J. Henry Schweich
 Dr. and Mrs. Ben Senturia
 Mr. and Mrs. John M. Shoenberg
 Mr. and Mrs. Robert H. Shoenberg
 Mr. and Mrs. Sydney M. Shoenberg, Sr.
 Mr. and Mrs. Sydney M. Shoenberg, Jr.
 Mr. and Mrs. Richard A. Shoninger
 Mr. and Mrs. James A. Singer
 Mr. and Mrs. James W. Singer, Jr.
 Mr. and Mrs. Henry H. Stern
 Mr. and Mrs. Louis Tiger
 Mrs. Paul Treuman
 Mr. and Mrs. Millard A. Waldheim
 Mrs. Earl D. Weil
 Mrs. Maurice Weil
 Mr. and Mrs. Frank P. Wolff
 Mrs. Norman C. Wolff

SURGICAL RESEARCH FUND

In Memory of Donor
 JOE LIPSUTZ
 ABE TOBER
 Mr. and Mrs. Monte Lopata
 MRS. JAMES R. REDDEN
 Surgical Residents, JH
 Mrs. Miriam W. Cook
 Mr. and Mrs. Myron S. Cook
 Dr. J. G. Probst
 MRS. EDWARD HANAU
 Epstein, Aftergut & Co.
 JULIA CYTRON
 Mr. and Mrs. Travis Owsley
 Mr. and Mrs. Ralph Brandon
 Mr. and Mrs. L. N. Gottenstroeter
 Mr. and Mrs. Morris Huber
 EUGENE DREYER
 Mrs. C. D. Pareira
 MISS NORA KAUFMAN
 Mrs. C. D. Pareira
 RALPH LOWENSTEIN
 Mrs. Miriam W. Cook
 Mr. and Mrs. Myron S. Cook
 MRS. DORA PAREIRA
 Mrs. Della Koenigsberg
 Mr. and Mrs. Joseph Cohen
In Honor of Donor
 MRS. BEN SHIFRIN'S BIRTHDAY
 Mrs. L. Howard Schwander
 MRS. FLORENCE MEYER'S
 BIRTHDAY
 Mrs. C. D. Pareira
Donation
 Mrs. Harry Lesser, Jr.
**REBECCA SENTURIA MEMORIAL
 RESEARCH FUND**
In Memory of Donor
 MRS. JOSEPH GILULA
 Irwin and Richard Senturia
**LOUIS M. MONHEIMER MEMORIAL
 RESEARCH FUND**
In Memory of Donor
 CHARLES KOVEN
 Clara and Jack London
In Honor of Donor
 WEDDING ANNIVERSARY OF
 MR. AND MRS. JACK LONDON
 Dr. J. G. Probst
**SURGICAL REHABILITATION OF
 HEARING FUND**
In Memory of Donor
 FRANK SHEAR'S MOTHER
 Dr. and Mrs. Ben Senturia
 DR. HERBERT A. MAZUR
 Dr. Ben Senturia
 Dr. Bernard C. Adler
Donation
 Mr. Milton Hellman

MAZUR PEDIATRICS FUND

In Memory of Donor
 DR. HERBERT A. MAZUR
 Mr. and Mrs. Robert Weil
 Dr. Harold Scheff
 Carole and Norman London
 Bernard Saunders
 Sadae and Lillian Landau
 Mrs. Jules Biegelsen
**JANE BENDER GOODMAN HODGKIN'S
 DISEASE RESEARCH FUND**
In Honor of Donor
 DR. ARTHUR STRAUSS' BIRTHDAY
 Mr. and Mrs. A. E. Bender
 MR. AND MRS. E. A. FRIEDMAN'S
 40TH WEDDING ANNIVERSARY
 Mr. and Mrs. N. Bender
SALE MEDICAL LIBRARY FUND
In Honor of Donor
 DR. LLEWELLYN SALE'S BIRTHDAY
 Ellie, Kathie and Terry Sale
**SAMUEL B. WESTLAKE ENT
 RESEARCH FUND**
In Memory of Donor
 DR. SAMUEL B. WESTLAKE
 Mrs. S. B. Westlake
In Honor of Donor
 50TH WEDDING ANNIVERSARY, MR.
 AND MRS. SYDNEY SHOENBERG
 Dr. Daniel D. Klaff
**MARTHA K. GREENSFELDER
 RESEARCH FUND**
In Memory of Donor
 MARTHA K. GREENSFELDER
 Mr. and Mrs. Bernard Greensfelder
**CARDIOPULMONARY LABORATORY
 RESEARCH FUND**
In Memory of Donor
 ROBERT WEINSTOCK, JR.
 Lillieth and Courtney Clower, Jr.
CARDIOVASCULAR RESEARCH FUND
In Memory of Donor
 REBECCA S. GINSBERG
 Mr. and Mrs. M. Shickman
 Mr. and Mrs. H. Simon
In Honor of Donor
 MRS. NETTIE MABLE
 MR. HARRY HORWITZ
 Mr. Nat L. Horwitz
RESEARCH FOUNDATION FUND
In Memory of Donor
 DR. SYLVESTER E. FENDLER
 Mr. and Mrs. Joseph J. Gravely
 Dr. Leroy W. Peterson
 Dr. Walter L. Eckardt
 MR. RALPH LOWENSTEIN
 Mr. and Mrs. Morton D. May
 MOLLY WEINSTEIN
 Mr. and Mrs. Floyd Palm
 SIG PUFFLES
 Mrs. David Eiseman, Jr.
 ROBERT WEINSTOCK
 Mr. and Mrs. Gilbert Rosenthal
 MR. I. MATHES
 MRS. MARTHA HAAS
 DR. NEWTON FREUND
 S. C. Sachs
 ROBERT LEVINE
 Sylvia and Jerry Reisman
 SOL BANK
 Mr. and Mrs. Monte Lopata
 CHARLES KOVEN
 Mrs. Gerard Lemon
 HARRY POLISHUK
 Mr. and Mrs. Hymen Polishuk
 ELEANOR KRISTAL
 Florissant Meadows Business
 Men's Assn.
 Mr. and Mrs. Jerome J. Seidel
 Mr. and Mrs. Maurice Seidel
 Frontier Investment Co.
 ROBERT MILLER NORTH
 Mr. and Mrs. George Ferguson
 Schultz Hardware
 Dr. and Mrs. Walter I. Henry
 MRS. OSCAR FRISCH
 Mr. and Mrs. Jules Biegelsen
In Honor of Donor
 RECOVERY OF MRS. SARAH
 FRENZEL
 Mr. and Mrs. Hymen Polishuk
 MR. AND MRS. JULIAN
 SAMUELS, SR.
 Lillian Schwartz
 DR. AND MRS. BERT GLASSBERG'S
 30th ANNIVERSARY
 Mr. and Mrs. Jules Biegelsen
 MR. AND MRS. LOUIS STEINER'S
 40th ANNIVERSARY
 Mr. and Mrs. Henry Brylawski
 DANIEL WARREN TERRIS
 Mrs. C. Z. Terris
 ANNE HANDELSMAN'S BIRTHDAY
 Jerome Rubenstein
Donation
 Mr. R. D. Kerckhoff
FREDA LITTAUER MEMORIAL FUND
In Memory of Donor
 MAX SCHNEER
 Mrs. Ruth Herwitz
DIABETES RESEARCH FUND
In Memory of Donor
 BLANCHE FIELDS
 Mr. and Mrs. Moe Schwartz
CHRONIC DISEASE RECREATION FUND
In Memory of Donor
 BLANCHE HOWARD
 Mr. and Mrs. George Beckman
 MRS. JULIUS CYTRON
 Mr. and Mrs. George Beckman
 MRS. ANN OBERMAN
 Mr. and Mrs. George Beckman
 HARRY JAMIESON
 Mr. and Mrs. George Beckman
 HATTIE RUBIN
 Mrs. Fannie Lasky
 ISAAC CARNOVSKY
 Mr. and Mrs. George Beckman
 MRS. ELY LIEBERMAN
 MR. WILLIAM LIPMAN
 Mr. and Mrs. Ben Apple and Norman
 Mrs. Ruth Bloom
 Mr. and Mrs. Bernard Yevelson
 Mr. and Mrs. George Beckman
 Mr. and Mrs. Saul Rubin
In Honor of Donor
 ROBERT HICKOK
 Dr. and Mrs. A. J. Reiches

**SIDNEY I. ROTHSCHILD MEDICAL
LIBRARY FUND**

In Memory of Donor
 SIDNEY I. ROTHSCHILD
 Mr. and Mrs. Louis Rothschild
 Mr. and Mrs. Irvin Bettman, Jr.
 Mr. Gilbert Rosenthal
In Honor of Donor
 DR. ARTHUR E. STRAUSS' 70th
 BIRTHDAY
 Avery Carp
Donation
 Marvin A. Stein
**JACKIE SUE MARGULIS
 LIVER RESEARCH FUND**
In Memory of Donor
 MORRIS MOVSHIN
 Mr. and Mrs. John Grossman
 Mr. and Mrs. Ben Cohen
 ISIDORE MATHES
 Mr. and Mrs. John Grossman
 Mr. and Mrs. Frank Fishgoll
 Mr. and Mrs. Ben Cohen
 CHARLES S. GROSS
 Mr. and Mrs. Ben Cohen
 ANN TOBER
 Mr. and Mrs. John Grossman
 MARY FUNK
 Mr. and Mrs. A. Barad
 JACKIE SUE MARGULIS
 HAROLD SIGOLOFF
 Mr. and Mrs. Ben Cohen
 BEN W. SANDERS
 Mrs. Aaron Leven
 ROBERT LEVINE
 Fannie, Gene and Marge Levin
In Honor of Donor
 JOSEPH GLASER'S RECOVERY
 Mrs. Aaron Leven
 Mrs. A. Zwiibelman
 Mr. and Mrs. John Grossman
 Mr. and Mrs. Ben Cohen
 MR. AND MRS. LOU GELBER'S
 40TH ANNIVERSARY
 Mrs. Aaron Leven
 HARRY HAMMERMAN'S BIRTHDAY
 Mr. and Mrs. Louis Hammermann
 PARENTS AT CHANUKAH
 Mr. and Mrs. Louis Shanfeld
 MRS. WALTER SIMON'S RECOVERY
 Mrs. A. Zwiibelman

VIRGINIA E. FORD MEMORIAL FUND

In Memory of Donor
 DR. HERBERT A. MAZUR
 Maternity Division Personnel
 Mr. and Mrs. Morris Huber
 FLORA FELSTEIN
 JH Nurses' Alumnae Assn.
 MILTON STRAUSS
 Golda O. Cohen
 ANNA MIESSNER
 Golda O. Cohen
 MOTHER OF BERNICE MESTRES
 JH Nurses' Alumnae Assn.
 RALPH D. LOWENSTEIN
 JH Nurses' Alumnae Assn.
 Mr. and Mrs. Al Robnak
 Dr. and Mrs. Joseph Orenstein
 Golda O. Cohen
 DR. WEINTRAUB'S SISTER
 JH Nurses' Alumnae Assn.
 FATHER OF MRS. TED BERNSTEIN
 Mr. and Mrs. Jules Levinson
 EFFIE BRIDGEMAN
 JH Nurses' Alumnae Assn.
 KARL SCHOTTLE
 JH Nurses' Alumnae Assn.
 DR. NATHAN KIMMELMAN'S
 FATHER
 JH Nurses' Alumnae Assn.
 DR. NEWTON FREUND
 JH Nurses' Alumnae Assn.
 DAVID WEINHAUS
 JH Nurses' Alumnae Assn.
 MRS. HERMAN DANFORTH
 Dr. and Mrs. W. Neal Newton
 MOTHER OF JERRY SMITH
 Mr. and Mrs. Jules Levinson
 ROSE OFSTEIN
 JH Nurses' Alumnae Assn.
 CHARLES KOVIN
 JH Nurses' Alumnae Assn.
 E. MURIEL ANSCOMBE
 JH Nurses' Alumnae Assn.
 WILLIAM SAVAN
 JH Nurses' Alumnae Assn.
Donor
In Honor of
 RECOVERY OF DR. LEON J. FOX
 JH Nurses' Alumnae Assn.
 MR. FRED Z. SALOMON'S
 BIRTHDAY
 Mrs. Alice P. Gresham
 MRS. HERBERT FRANK'S BIRTHDAY
 Mrs. Alice P. Gresham
 MR. BERNARD LITTMAN'S
 BIRTHDAY
 Florence, Joe and Marlene Marx
 Mr. and Mrs. Herbert Levy
 DR. ARTHUR E. STRAUSS' 70th
 BIRTHDAY
 JH Nurses' Alumnae Assn.
 BIRTH OF SANFORD L. COHN
 Golda Cohen
Donations
 Nursing Personnel, 2-C
 Georgiabella Andrews

Fund For Needy Established

An assistance fund for patients has been established at the hospital through a gift of \$4,000 from the Beth El Congregation of Flat River, Missouri. The trustees of the congregation awarded the gift from income from the sale of their synagogue.

The assistance fund will provide transportation, ambulance service, and miscellaneous expenses for needy patients at Jewish Hospital.

The congregation dissolved when many of its members left the Flat River area, some coming to St. Louis. A large number of the synagogue's members knew Jewish Hospital well, having traveled to St. Louis to use its facilities on many occasions.

1959 Statistics**About the Hospital**

1. Nine new beds were added, bringing to 494 the number of available beds in the hospital. Bed occupancy was 86.5 per cent.
2. Patient admissions: 15,835, an increase of 1,313 patients over 1958. Average length of stay for JH patients in acute divisions was 8.8 days (excluding long-term disease, rehabilitation and psychiatric divisions). In 1958, average length of stay was 9.3 days.
3. The Aaron Waldheim Clinics were visited by 11,530 patients, who made 19,109 individual visits. An average of 75 patients were treated daily at the clinic.
4. The division of pathology and laboratories conducted 217,456 laboratory examinations — 5,000 more than in 1958. The department of radiology registered 25,458 X-ray examinations.

216

The JEWISH HOSPITAL...
of St. Louis

Non-Profit Organization

U. S. POSTAGE
PAID
ST. LOUIS, MO.
PERMIT NO. 2376