

2014

# Somatostatin analogues for receptor targeted photodynamic therapy

Slavka Kascakova  
*Erasmus MC, Rotterdam*

Leo J. Hofland  
*Erasmus MC, Rotterdam*

Henriette S. De Bruijn  
*Erasmus MC, Rotterdam*

Yunpeng Ye  
*Washington University School of Medicine in St. Louis*

Samuel Achilefu  
*Washington University School of Medicine in St. Louis*

*See next page for additional authors*

Follow this and additional works at: [http://digitalcommons.wustl.edu/open\\_access\\_pubs](http://digitalcommons.wustl.edu/open_access_pubs)

---

## Recommended Citation

Kascakova, Slavka; Hofland, Leo J.; De Bruijn, Henriette S.; Ye, Yunpeng; Achilefu, Samuel; van der Wansem, Katy; van der Ploeg-van den Heuvel, Angelique; van Koetsveld, Peter M.; Brugts, Michael P.; van der Lelij, Aart-Jan; Strerenborg, Henricus J. C. M.; ten Hagen, Timo L. M.; Robinson, Dominic J.; and van Hagen, Martin P., "Somatostatin analogues for receptor targeted photodynamic therapy." *PLoS One*.9,8. e104448. (2014).  
[http://digitalcommons.wustl.edu/open\\_access\\_pubs/3394](http://digitalcommons.wustl.edu/open_access_pubs/3394)

---

**Authors**

Slavka Kascakova, Leo J. Hofland, Henriette S. De Bruijn, Yunpeng Ye, Samuel Achilefu, Katy van der Wansem, Angelique van der Ploeg-van den Heuvel, Peter M. van Koetsveld, Michael P. Brugts, Aart-Jan van der Lelij, Henricus J. C. M. Strerenborg, Timo L. M. ten Hagen, Dominic J. Robinson, and Martin P. van Hagen



# Somatostatin Analogues for Receptor Targeted Photodynamic Therapy

Slávka Kaščáková<sup>1</sup>, Leo J. Hofland<sup>2</sup>, Henriette S. De Bruijn<sup>3</sup>, Yunpeng Ye<sup>4</sup>, Samuel Achilefu<sup>4</sup>, Katy van der Wansem<sup>2</sup>, Angelique van der Ploeg-van den Heuvel<sup>1</sup>, Peter M. van Koetsveld<sup>2</sup>, Michael P. Brugts<sup>5</sup>, Aart-Jan van der Lelij<sup>2</sup>, Henricus J. C. M. Sterenberg<sup>1</sup>, Timo L. M. ten Hagen<sup>6</sup>, Dominic J. Robinson<sup>3</sup>, Martin P. van Hagen<sup>2,5\*</sup>

**1** Center for Optical Diagnostics and Therapy, Department of Radiation Oncology, Erasmus MC, Rotterdam, The Netherlands, **2** Department of Internal Medicine, Erasmus MC, Rotterdam, The Netherlands, **3** Department of Otolaryngology and Head & Neck Surgery, Erasmus MC, Rotterdam, The Netherlands, **4** Department of Radiology, School of Medicine, Washington University, St. Louis, Missouri, United States of America, **5** Department of Immunology, Erasmus Medical Center, Rotterdam, The Netherlands, **6** Department of Surgical Oncology, Erasmus Medical Center, Rotterdam, The Netherlands

## Abstract

Photodynamic therapy (PDT) is an established treatment modality, used mainly for anticancer therapy that relies on the interaction of photosensitizer, light and oxygen. For the treatment of pathologies in certain anatomical sites, improved targeting of the photosensitizer is necessary to prevent damage to healthy tissue. We report on a novel dual approach of targeted PDT (vascular and cellular targeting) utilizing the expression of neuropeptide somatostatin receptor ( $ss_{t_2}$ ) on tumor and neovascular-endothelial cells. We synthesized two conjugates containing the somatostatin analogue [Tyr3]-octreotate and Chlorin e6 (Ce6): Ce6-K<sub>3</sub>-[Tyr3]-octreotate (1) and Ce6-[Tyr3]-octreotate-K<sub>3</sub>-[Tyr3]-octreotate (2). Investigation of the uptake and photodynamic activity of conjugates *in-vitro* in human erythroleukemic K562 cells showed that conjugation of [Tyr3]-octreotate with Ce6 in conjugate 1 enhances uptake (by a factor 2) in cells over-expressing  $ss_{t_2}$  compared to wild-type cells. Co-treatment with excess free Octreotide abrogated the phototoxicity of conjugate 1 indicative of a specific  $ss_{t_2}$ -mediated effect. In contrast conjugate 2 showed no receptor-mediated effect due to its high hydrophobicity. When compared with un-conjugated Ce6, the PDT activity of conjugate 1 was lower. However, it showed higher photostability which may compensate for its lower phototoxicity. Intra-vital fluorescence pharmacokinetic studies of conjugate 1 in rat skin-fold observation chambers transplanted with  $ss_{t_2}^+$  AR42J acinar pancreas tumors showed significantly different uptake profiles compared to free Ce6. Co-treatment with free Octreotide significantly reduced conjugate uptake in tumor tissue (by a factor 4) as well as in the chamber neo-vasculature. These results show that conjugate 1 might have potential as an *in-vivo*  $ss_{t_2}$  targeting photosensitizer conjugate.

**Citation:** Kaščáková S, Hofland LJ, De Bruijn HS, Ye Y, Achilefu S, et al. (2014) Somatostatin Analogues for Receptor Targeted Photodynamic Therapy. PLoS ONE 9(8): e104448. doi:10.1371/journal.pone.0104448

**Editor:** Michael Hamblin, MGH, MMS, United States of America

**Received:** May 1, 2014; **Accepted:** July 8, 2014; **Published:** August 11, 2014

This is an open-access article, free of all copyright, and may be freely reproduced, distributed, transmitted, modified, built upon, or otherwise used by anyone for any lawful purpose. The work is made available under the Creative Commons CC0 public domain dedication.

**Data Availability:** The authors confirm that all data underlying the findings are fully available without restriction. Data for figures and confocal images can be found on Figshare with the DOI: 10.6084/m9.figshare.1088401.

**Funding:** This study was supported in part by the National Institutes of Health grant (R01 EB001430) to SA and by an Erasmus MC Grant. The funders had no role in study design, data collection and analysis, decision to publish, or preparation of the manuscript.

**Competing Interests:** The authors have declared that no competing interests exist.

\* Email: p.m.vanhagen@erasmusmc.nl

## Introduction

In PDT visible light is used to transfer energy to a photosensitizer. This leads to the production of cytotoxic intermediates, such as singlet oxygen or free radicals that result in cell death and tissue response [1]. With the use of fiber optic devices and endoscopy, light can be delivered to almost any part of the body, significantly increasing the applications of PDT. For the ablation of deep-seated solid tumors, interstitial approaches are used [2]. PDT is approved as a treatment for neovascular age related macular degeneration and (pre-) cancerous conditions such as superficial gastric cancer, Barrett's esophagus, the palliative treatment of head and neck cancers, and skin malignancies [3].

The ability to confine photosensitizer activation by restricting illumination to the tumor allows a certain degree of selectivity. However, for applications of PDT in complex anatomical sites,

such as the abdominal or thoracic cavities, this is not possible and in circumstances where the selectivity of traditional photosensitizers is insufficient, targeted photosensitizer delivery becomes essential. A targeted approach employs the utilization of ligands, which can bind specifically to neovascular endothelium or cellular markers to target tumor tissue. While antibody-conjugates have received the most attention [4–7], cellular transformations offer other potent targets to exploit. Growth factor receptors, hormonal-, low-density lipoprotein-, transferrin, glucose, folic acid-, and insulin- receptors have been investigated as cellular markers for active photodynamic targeting [8–10]. In addition to the overall aim of increasing the uptake of photosensitizers in target cells, the small radius of action of singlet oxygen (0.1–0.2  $\mu\text{m}$ ) [11] has lead investigators to deliver conjugates to specific sites within cells. Targeting of nuclear receptors is one such example [10].

Extensive research in targeted PDT has shown that there are several factors that affect the efficiency of *in vivo* tumor targeting. The chemical modifications that are necessary for the synthesis (conjugation of photosensitizer with ligand) may lead to a reduced affinity of the ligand to its receptor or to a reduced singlet oxygen quantum yield. In an ideal scenario the photosensitizer and ligand affinity will be preserved, the receptor would be present on the surface of tumor cells at high concentrations compared to normal cells and lead to an internalization process that enhances PDT efficacy [9].

Based on the development of targeted PDT, the somatostatin receptor (sst) represents an attractive option for tumor targeting. Ssts are over-expressed in a large number of human cancers. Receptor density is high and the distribution is usually homogeneous [12,13]. Among the 5 sst subtypes, the sst<sub>2</sub> predominates [12,13]. This receptor represents the basis for a number of clinical applications, e.g. symptomatic therapy with somatostatin analogues. Moreover, for diagnostic purposes, sst scintigraphy is an important tool for a subgroup of neuroendocrine tumors (NET) [14]. Radiotherapy with radiolabeled somatostatin analogues is also extremely promising for patients with gastroenteropancreatic sst<sub>2</sub>-positive NET [15,16]. Previous studies have shown that angiogenic vessels, as well as peri-tumoral vessels express ssts, which is predominantly sst<sub>2</sub> [17–20]. It is accepted that somatostatin acts locally on tumor growth, either through direct action on tumor cells and/or through action on peritumoral vessels [21]. Upregulated ssts in tumors makes the sst an attractive cellular target, since a photosensitizer-conjugate can be used to target tumor cells as well as neovasculature. Our aim was to develop an approach to improve PDT by direct conjugation of photosensitizer with the synthetic, metabolically stable somatostatin analogue octreotate.

We report on the synthesis and *in vitro* cytotoxicity of two Ce6-somatostatin analogue conjugates: Ce6-K<sub>3</sub>-[Tyr3]-octreotate (**1**) and Ce6-[Tyr3]-octreotate-K<sub>3</sub>-[Tyr3]-octreotate (**2**). Their *in vitro* quantitative uptake and phototoxicity in sst<sub>2</sub><sup>+</sup> K562 and WT cells have been compared with those of un-conjugated Ce6. Intra-vital *in-vivo* fluorescence pharmacokinetics of conjugate **1** was determined in rat skin-fold observation chambers transplanted with sst<sub>2</sub><sup>+</sup> AR42J pancreatic tumor cells.

## Materials and Methods

In a series of studies on photosensitizer conjugation with octreotate, we began with the development of 2-[1-Hexyloxyethyl]-2-devinyl pyropheophorbide-a (HPPH)-octreotate conjugates. We selected HPPH because it is considered as a potent and promising clinical photosensitizer [22]. However, our preliminary *in vitro* studies revealed that the lipophilicity of HPPH dominated the specific recognition of the conjugate by the sst<sub>2</sub> receptor and led to non-specific uptake (unpublished data). We hypothesized that coupling photosensitizers that are more hydrophilic would be a more suitable approach. To test this hypothesis, Chlorin e6 (Ce6) was selected as a photosensitizer. Ce6 is characterized by rapid elimination from the body [23–26], high absorption in the red spectral region and high sensitizing efficacy [26]. Although, Ce6 is very photolabile [27,28], its high solubility in physiological media [23,24] overcomes the delivery problems of hydrophobic photosensitizers.

The structures of Ce6 and 2 somatostatin analogue conjugates of Ce6, used in the present study are shown in Figure 1.

## Synthesis of Ce6-coupled somatostatin analogues and characterization (File S1)

The synthesis of Ce6-coupled somatostatin analogues is summarized in Schemes S1 and S2 in File S1. Scheme S1 shows the synthesis of Ce6-K<sub>3</sub>-[Tyr3]-octreotate (conjugate **1**), whereas Scheme S2 summarizes the synthesis of Ce6-[Tyr3]-octreotate-K<sub>3</sub>-[Tyr3]-octreotate (conjugate **2**). The Figure S1 in File S1 shows the ES-MS and HPLC profiles of conjugates **1** and **2**.

## Cells Transfection and Culture

Copy DNA of the human sst<sub>2</sub> receptor was merged into a LZRS-lyt2-IRES plasmid background (lyt2 being the mouse CD8 receptor). The calcium precipitation method [29] was used to transfect non-adherent K562 cells with the LZRS-lyt2-IRES-sst<sub>2</sub>. Expression of lyt2 was evaluated by means of FACS analysis using FITC labeled anti-mouse CD8 antibody (BD PharMingen, Netherlands), 1:160 diluted in FACS-buffer. Clones were grown from Lyt2 positive isolated cells. Vital clones were cultured and tested in time for stability of sst<sub>2</sub> receptor expression, by means of both FACS analysis (using FITC labeled octreotate 200 nM) as well as sst<sub>2</sub> mRNA expression by RT-PCR as previously described [30]. Clone showing high and stable somatostatin receptor expression (Fig. 2A) was used in further experiments. K562 cells were grown in RPMI 1640 containing L-glutamine, 10% heat-inactivated FCS, 50 µg/ml penicillin and 50 µg/ml streptomycin, and were maintained in an incubator at 37°C in a humidified atmosphere of 5% CO<sub>2</sub>.

## Photophysical properties of the conjugates (File S1)

The partition coefficient, steady-state fluorescence and absorption properties, photobleaching properties, singlet oxygen quantum yield and the pH properties of the conjugates were determined. The details about used methods are part of File S1 and as described previously [31–37].

## Cellular uptake

Stock solutions of Ce6 and Ce6-conjugates (1 mM) were dissolved in 80% DMSO and were stored in the dark at –20°C. Before experiments, the solutions were diluted to a concentration of 0.1 mM in 20% DMSO. K562 sst<sub>2</sub><sup>+</sup> or WT (3×10<sup>5</sup>) in 1 ml RPMI 1640 serum-free or supplemented with 5% FCS were incubated with Ce6 or with conjugate (1 µM) for 15 min to 24 h in the dark at 37°C. After incubation, the cells were centrifuged, cell pellet dissolved in 2% SDS and fluorescence emission spectra (λ<sub>exc</sub> = 405 nm) recorded. Photosensitizer concentrations were calculated in triplicate according to a calibration curve generated by mixing a known concentration of photosensitizer with a lysated control samples.

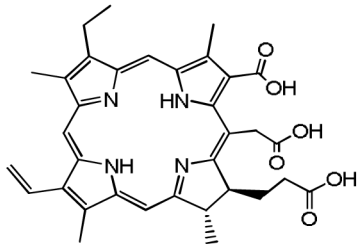
## Membrane binding studies with [<sup>125</sup>I]-SS14

The binding potency of Ce6-conjugates to sst<sub>2</sub> on K562 sst<sub>2</sub><sup>+</sup> cells was evaluated on cell membrane preparations. The quantification of conjugates binding was determined by competition binding assay (displacement of [<sup>125</sup>I]-SS14 binding from sst by increasing concentrations of unlabeled Octreotide or conjugates) as described previously [30].

## Confocal Microscopy

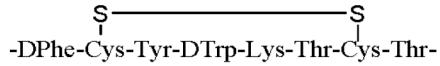
Confocal fluorescence imaging (LSM 510 Meta (Zeiss, Germany)) was performed using a Plan-apochromat 63×/1.4 oil objective. The subcellular distribution of photosensitizer fluorescence was mapped under 405 nm diode laser excitation in the lambda mode (539–753 nm).

A)



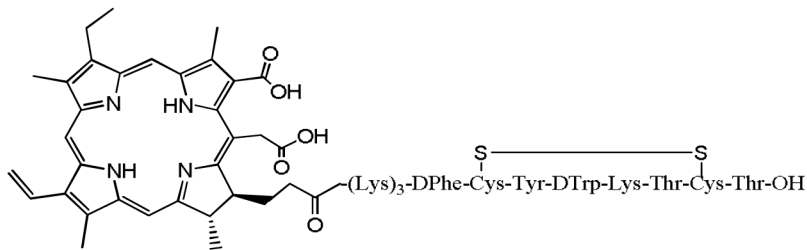
Chlorin e6 (Ce6)

B)

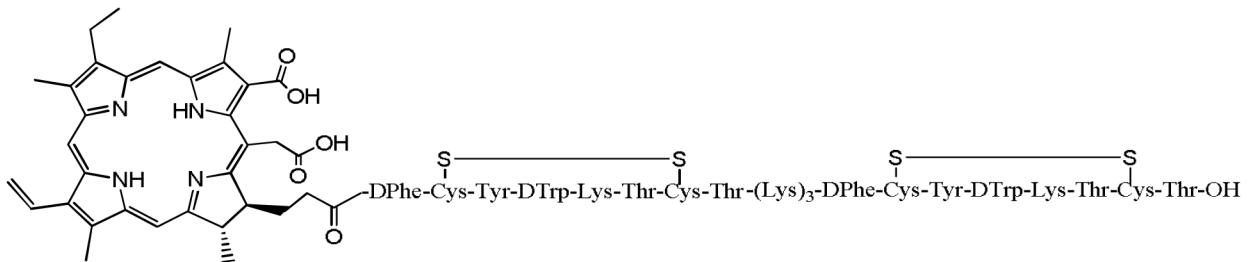


[Tyr3]-octreotate

C)

Ce6-K<sub>3</sub>-[Tyr3]-octreotate

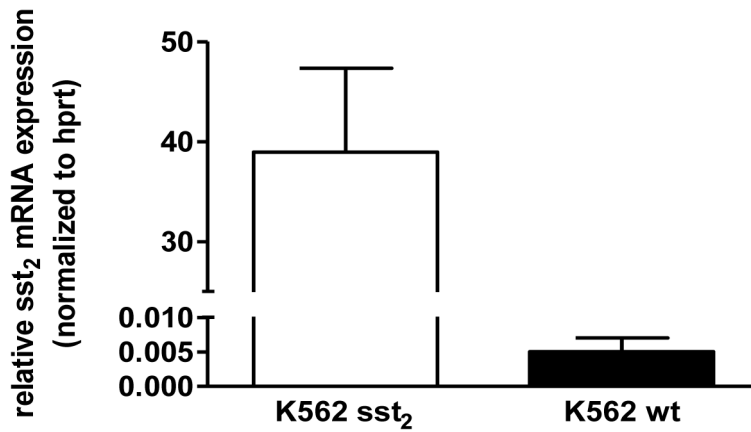
D)

Ce6-[Tyr3]-octreotate-K<sub>3</sub>-[Tyr3]-octreotate

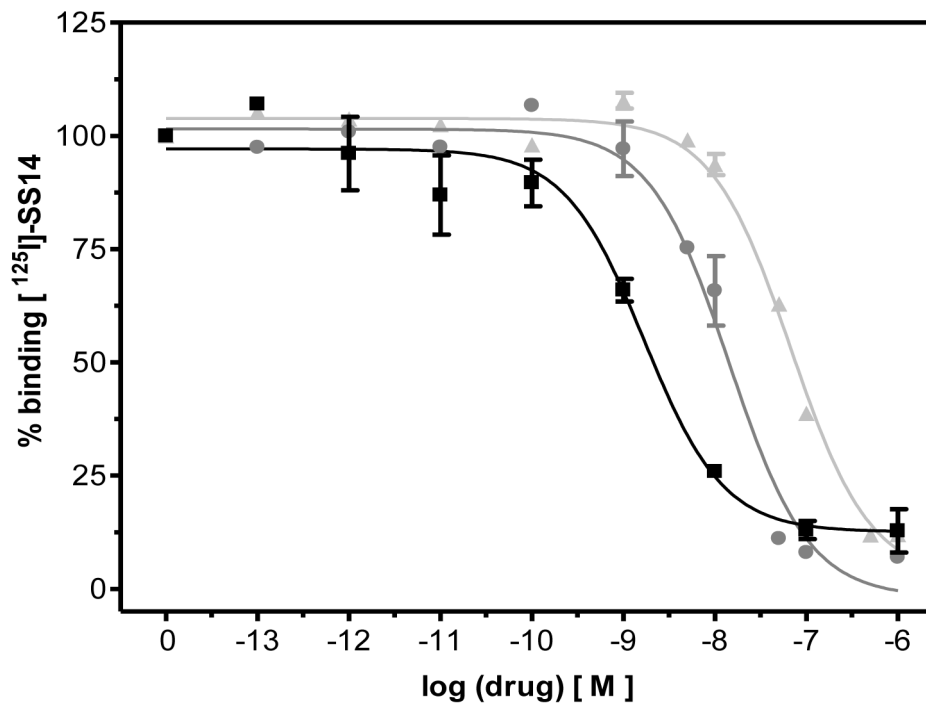
**Figure 1. Structures of Ce6 and its two [Tyr3]-octreotate conjugates.** (A) Ce6; (B) [Tyr3]-octreotate motif; (C) Ce6-K<sub>3</sub>-[Tyr3]-octreotate (conjugate **1**) and (D) Ce6-[Tyr3]-octreotate-K<sub>3</sub>-[Tyr3]-octreotate (conjugate **2**). A tri-lysine linker (K<sub>3</sub>) was used between Ce6 and [Tyr3]-octreotate motifs to improve the hydrophilicity of the monomeric conjugate **1**. A similar linker was also inserted between the two [Tyr3]-octreotate motifs in the dimeric analog, conjugate **2**.

doi:10.1371/journal.pone.0104448.g001

A)



B)



**Figure 2.** (A) Comparison of  $sst_2$  mRNA expression in transfected human myeloid K 562  $sst_2^+$  and WT cells; (B) Displacement of [ $^{125}$ I]-SS14 binding to membrane preparations of K562  $sst_2^+$  cells, by unlabeled Octreotide (■), and by conjugates 1 (▲) and 2 (●).  
doi:10.1371/journal.pone.0104448.g002

### Image Analysis

The spectra were analyzed as a linear combination of basis spectra and fitted using a singular value decomposition algorithm. The image analysis was performed using the Labview 7.1 (National Instruments Corporation). Basis spectra of components

and cell autofluorescence were measured by the same microscopic system. The images were reconstructed in RGB format: blue represents autofluorescence and green photosensitizer-fluorescence.

## Phototoxicity

*In vitro* PDT experiments were performed to determine the phototoxicity of free Ce6 and conjugates. K562 sst<sub>2</sub><sup>+</sup> and WT cells were seeded in L-polylysine-coated (10 µg/ml) 96-well (8×10<sup>3</sup>/well) and 24-well (4×10<sup>4</sup>/well) and incubated overnight in 5% CO<sub>2</sub> at 37°C. After 24 hours, cells were treated for 4 h with photosensitizer (0.01–1 µM) in the absence or presence of excess of unconjugated Octreotide (10<sup>-5</sup> M) in serum-free medium. After incubation, cells were washed. Fresh serum-free medium was added, and cells were illuminated with 652 nm to a dose from 0.5 to 5 J cm<sup>-2</sup> at 5 mW.cm<sup>-2</sup>. Thereafter, serum-containing medium was added and cells were allowed to grow for an additional 3 days in 5% FCS medium. Toxicity was determined by: measurement of DNA contents using the bisbenzimidazole fluorescent dye (Hoechst 33258, Boehringer Diagnostics, CA, USA) and measurement of mitochondrial dehydrogenase cleavage of WST-1 reagent (Roche Diagnostics, Germany) [38,39]. Experiments were done in triplicates.

## *In-vivo* pharmacokinetics in AR42J tumours in the rat skin-fold chambers

Intra-vital confocal fluorescence imaging was performed in single sided rat skin-fold chambers transplanted with sst<sub>2</sub><sup>+</sup> AR42J acinar pancreas tumors as described previously [40]. The study was approved by the animal experimental committee of the Erasmus MC. Chambers were prepared in 12 animals divided into three groups. Animals were anaesthetized (ketamine (100 mg/kg) i.p. and xylazine (10 mg/kg) s.c. and AR42J cells (1–3 10<sup>5</sup> cells) were inoculated superficially in the facia/sub-cutaneous tissue and an 18 mm round cover slide was placed and fixed to close the window. On the surrounding tissue Bactroban was applied to prevent inflammation and analgesia (Rimadyl Cattle 5 mg/kg) was administered subcutaneously. Pharmacokinetic experiments were initiated when tumors were clearly visible and had a microscopically adequate vascular supply. Solutions of free Ce6 and Conjugate **1** were made by dissolving in 80% DMSO and diluting with PBS to a final concentration of 5% DMSO. The first group of animals received Ce6 at a dose of 0.2 mg/kg, the second group received conjugate **1** at a dose of 0.67 mg/kg such that the same number of Ce6 molecules were administered to each animal; (equivalent Ce6 concentration of 2.011×10<sup>-4</sup> M). A third group of animals was pre-administered with free Octreotide, at a dose of 0.5 mg/kg.

## Intra-vital confocal microscopy, image analysis and statistics

Animals were anesthetized using isoflurane/O<sub>2</sub> and autofluorescence images were recorded. Drug was administered intravenously into the tail vein. Fluorescence images were acquired 5 and 20 minutes after conjugate administration after which the animal was allowed to recover. Subsequent fluorescence images were acquired under anesthesia at 1, 4, 24, 72 and 96 hrs. Animals were housed in subdued light conditions. Confocal fluorescence imaging (LSM 510 Meta (Zeiss, Germany)) was performed using a 40× objective. The distribution of Ce6 fluorescence was mapped under 514 nm laser excitation in the lambda mode (539–753 nm). White light transmission images were acquired to determine regions of interest (ROIs) within tumor, normal tissue and tissue vasculature. Spectra acquired from individual pixels were analyzed as a linear combination of basis spectra and fitted using a singular value decomposition algorithm. The fluorescence of Ce6 and conjugate **1** was determined in ROIs. No correction for tissue optical properties was performed. Three regions of interest in each

chamber, for each tissue type, were recorded and weighted averages were used to determine pharmacokinetics. Values are presented as mean ± SE. Tests for significance between groups are performed using Student's t test where p<0.05 is deemed significant.

## Results

### Binding properties of conjugates

The sst<sub>2</sub> mRNA expression levels in K562 WT and sst<sub>2</sub><sup>+</sup> cells are shown in Fig. 2A. Wt and K562 sst<sub>2</sub><sup>+</sup> cells did not express detectable levels of sst<sub>1</sub>, sst<sub>3</sub> and sst<sub>5</sub> (data not shown).

When tested each conjugate for its ability to compete with specific binding of [<sup>125</sup>I]-SS14 to membrane preparations of K562 sst<sub>2</sub><sup>+</sup>, conjugate **1** was 40× less potent than unlabeled Octreotide (IC<sub>50</sub> of 68 nM vs 1.7 nM, respectively). Conjugate **2** also competed with specific [<sup>125</sup>I]-SS14 binding, but with an almost 5× higher potency (14 nM) than conjugate **1**. Displacement curves are shown in Fig. 2B.

### Photophysical properties of conjugates

In PBS at pH = 7.4 the absorption maximas of both conjugates revealed the shift to longer wavelength compared to Ce6. The bathochromic shift of the Q band was most pronounced (659 nm for Ce6 in conjugate **1** and 661 nm in conjugate **2**, compared to 655 nm of un-conjugated Ce6) (Table 1). The maximum of Soret band was shifted from 402 nm for Ce6 alone, to 405 nm for conjugate **1** and **2**. Soret band broadening increased with the number of [Tyr3]-octreotate in the conjugate.

When the somatostatin analogue was conjugated with Ce6, the maximum of fluorescence intensity was red shifted (from 661 nm for Ce6 alone, to 665 nm for **1** and **2**). The fluorescence quantum yield of Ce6 in neutral pH was similar to conjugates **1** (Φ<sub>F</sub> = 0.18 for Ce6 and Φ<sub>F</sub> = 0.20 for **1**). The fluorescence quantum yield of conjugate **2** was significantly lower (Φ<sub>F</sub> = 0.03).

The singlet oxygen production (Φ<sub>Δ</sub>) determined relative to Φ<sub>Δ</sub> = 0.64 for Ce6 [37], was found Φ<sub>Δ</sub> = 0.73 for conjugate **1** and Φ<sub>Δ</sub> = 0.59 for conjugate **2**. Although the singlet oxygen production did not significantly differ between the compounds, un-conjugated Ce6 showed low photostability. During illumination above 5 J.cm<sup>-2</sup> no fluorescence intensity was detected, without any further singlet oxygen production (Figure 3A). In contrast to un-conjugated Ce6, conjugates **1** and **2** revealed higher photostability. With higher irradiation dose (>5 J.cm<sup>-2</sup>), the conjugates continue to produce singlet oxygen (insert of Figure 3A).

### Effect of pH on properties of Ce6 and Ce6-conjugates

Compared to un-conjugated Ce6, the same spectral features were observed for both conjugates: the fluorescence emission maximum was blue shifted with decreasing the pH (Figures S2–S4 in File S1). The titration curves displayed inflection points at pH 6.71 for un-conjugated Ce6 (Figure S2 in File S1), at pH 5.38 for conjugate **1** (Figure S3 in File S1), and at pH 6.28 for conjugate **2** (Figure S4 in File S1).

### Partition coefficients

Octanol-water partition coefficient increased with the number of [Tyr3]-octreotate within the conjugate structure (Table 1). Conjugate **1** showed approximately 5× higher accumulation within the 1-octanol phase relative to Ce6, reflecting its higher hydrophobicity compared to Ce6 alone. In contrast, **2** had >600× higher accumulation in 1-octanol than in buffer and can be classified as hydrophobic.

**Table 1.** Photophysical properties of Ce6, conjugate **1** and **2** in PBS.

Photophysical property	Ce6	Conjugate 1	Conjugate 2
$\Delta\nu_{abs}^{Soret}$ (nm) pH = 7.4	27	32	42
$\Delta\nu_{abs}^{Q(0,0)}$ (nm) pH = 7.4	21	21	26
$\lambda_{max}^{Soret}$ (nm) pH = 7.4	402	405	405
$\lambda_{max}^{Q(0,0)}$ (nm) pH = 7.4	655	659	661
$\lambda_{max}^f$ (nm) pH = 7.4	661	665	665
$\Phi_F$ in PBS pH = 7.4	0.18	0.20	0.03
$k_{blA}$ ( $\times 10^{-2} \text{ J}^{-1} \text{ cm}^2$ )	25.69	14.07	22.70
$\Phi_{\Delta}$ in PBS pH = 7.4	$0.64 \pm 0.08$	$0.73 \pm 0.02$	$0.59 \pm 0.03$
pKa	$6.71 \pm 0.0947$	$5.38 \pm 0.0615$	$6.28 \pm 0.035$
LogP pH = 7.4	$0.005 \pm 0.05$	$0.679 \pm 0.04$	$2.820 \pm 0.34$

Note:  $\Delta\nu_{abs}^{Soret}$  and  $\Delta\nu_{abs}^{Q(0,0)}$  is the full width at half maximum of the Soret and Q(0,0) absorption band, respectively;  $\lambda_{max}^{Soret}$  and  $\lambda_{max}^{Q(0,0)}$  are the maxima of the Soret and Q(0,0) absorption bands, respectively;  $\lambda_{max}^f$  is the maximum of fluorescence band; LogP is the logarithm of partition coefficient;  $\Phi_F$  is the fluorescence quantum yield and  $\Phi_{\Delta}$  is the singlet oxygen quantum yield,  $k_{blA}$  is rate constant of initial absorption bleaching and pKa represents the inflection point of pH titration curve (basis for titration curve was  $F_{max}/A$  ( $\lambda_{exc}$ )).

doi:10.1371/journal.pone.0104448.t001

### Phototoxicity

Irradiation of K562 sst<sub>2</sub>+ cells preincubated with conjugates caused phototoxicity in the concentration dependent manner (Figure 3B). While 1  $\mu\text{M}$  concentration of conjugate **1** induced approximately 50% of cell survival compared to controls cells, with conjugate **2** only 10% of cell survived after 5  $\text{J}\cdot\text{cm}^{-2}$  (Figure 3B). Co-treatment of K562 sst<sub>2</sub>+ cells with unlabeled Octreotide (to prevent the binding of conjugates to sst<sub>2</sub>) abolished the inhibitory effect of both conjugates. However, the decrease in PDT toxicity after Octreotide co-treatment was more evident for conjugate **1**. In addition, while conjugate **1** did not show any toxicity in K562 WT cells (with or without Octreotide co-treatment), the PDT activity of conjugate **2** on K562 WT was comparable with the PDT activity on K562 sst<sub>2</sub>+ cells. Treatment of cells with the photosensitizer alone (Ce6 un-conjugated or conjugates), in the absence of light or light exposure alone, had no effect on cell growth.

### Intracellular Uptake

The role of the sst<sub>2</sub> expression on cell uptake of the conjugates and un-conjugated Ce6 (1  $\mu\text{M}$ ) is shown in Figure 3C. Of the conjugates, only conjugate **1** showed specificity of uptake. An approximately 2 $\times$  higher concentration was detected in sst<sub>2</sub>+ compared to WT cells. Enrichment of the medium with the serum decreased the uptake of conjugates by cells, but without any effect on the specificity of uptake. K562 sst<sub>2</sub>+ cells displayed 2 $\times$  higher uptake of conjugate **1** compared to WT cells, in both serum-enriched and -depleted medium. In contrast no difference in concentration uptake of conjugate **2** between sst<sub>2</sub>+ and WT cells was detected. The same result as for conjugate **2** was observed also for un-conjugated Ce6.

### Comparison of Phototoxicity Induced by Conjugate 1 and Un-conjugated Ce6 on K562 Sst<sub>2</sub>+ Cell Line

The phototoxicity of K562 sst<sub>2</sub>+ cells attributed to the 4 h incubation with conjugate **1** and un-conjugated Ce6 and light exposure is shown in Figure 4A. Both photosensitizers induced a PDT effect in a light-dose dependent manner. However, for the same dose of light, the un-conjugated Ce6 was more potent than conjugate **1**. The un-conjugated Ce6 shows phototoxicity after 0.5

$\text{J}\cdot\text{cm}^{-2}$  with increased inhibition of cell growth with increasing light dose. This was in contrast to cells preincubated with conjugate **1**, for which the light dose dependent effect was seen from 3.5  $\text{J}\cdot\text{cm}^{-2}$ . At 5  $\text{J}\cdot\text{cm}^{-2}$ , Ce6 alone results in almost complete inhibition of cell viability, whereas cells preincubated with conjugate **1** showed a 50% cell survival.

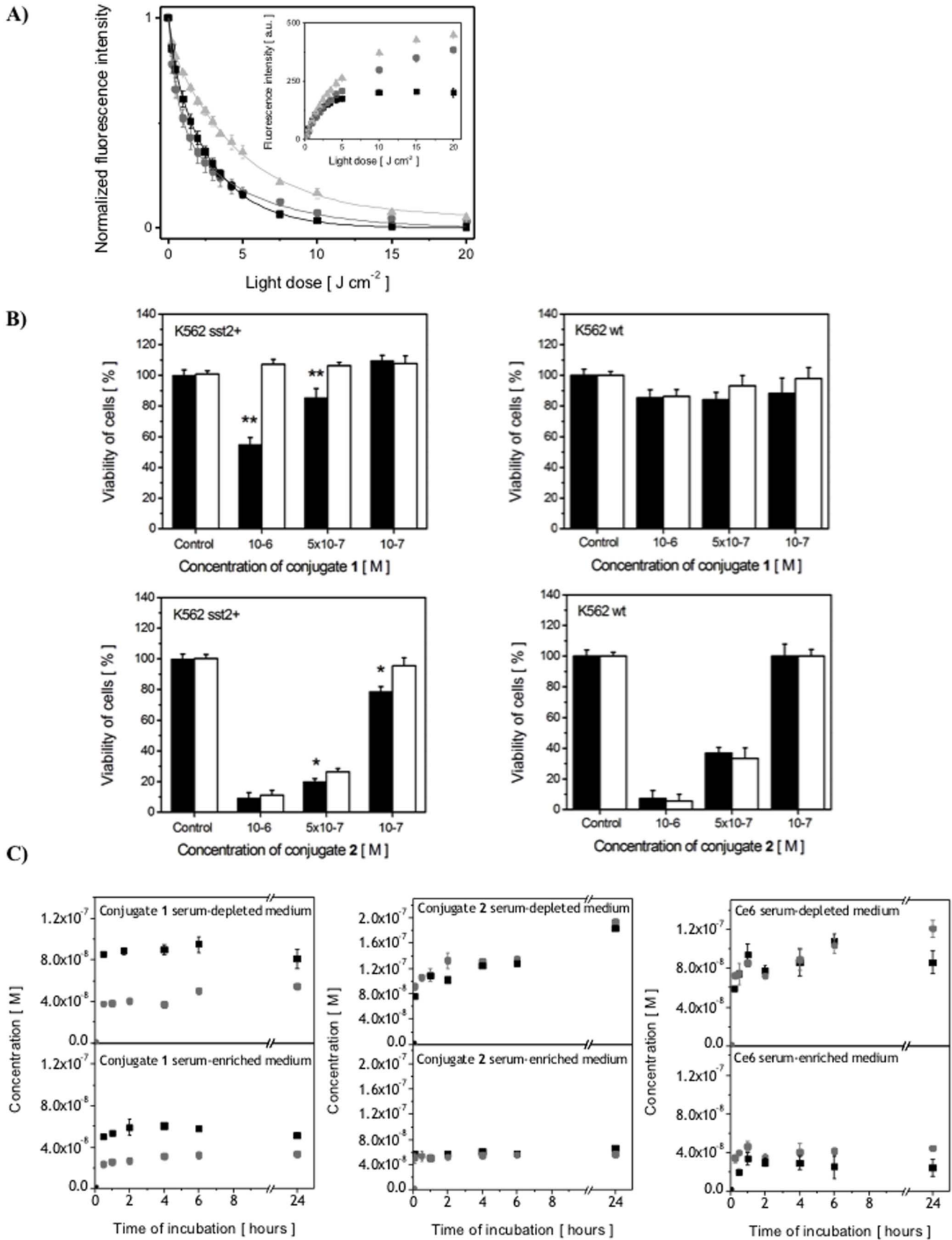
### Intracellular Localization

The intracellular localization of un-conjugated Ce6 and conjugate **1** in K562 sst<sub>2</sub>+ cells is shown in Figures 4B and 4C. The comparison of cells treated with Ce6 alone and conjugate showed a clear difference in the distribution of the fluorescence. After 15 min incubation with Ce6 in serum-depleted medium, the fluorescence images revealed the presence of Ce6 in the plasma membrane. At 4 hours, strong staining of membrane structure together with perinuclear region was detected (Figure 4B). This was in contrast to the localization of conjugate **1** for which at 15 min the fluorescence was located in the outer membrane with some discrete localization pattern within the cytoplasm. The punctuate localization was maintained for longer incubation periods, with no evidence of fluorescence in the plasma membrane (Figure 4C).

### Fluorescence pharmacokinetics in subcutaneously implanted AR42J tumors

Figure 5A–C shows a representative example of the AR42J in the rat chamber immediately prior to pharmacokinetic measurements. A white light image shows vital tumor tissue that is coincident with an OctreoScan-SPECT/CT fusion image showing uptake in sst<sub>2</sub>+ positive cells *in-vivo*. An immunohistochemical sst<sub>2</sub>+ stain shows the microscopic distribution of sst<sub>2</sub>+ cells surrounded by subcutaneous fascia (normal tissue). The spatial distribution of pharmacokinetics from conjugate **1** is shown in Figure 5D–G. Five minutes after administration the conjugate **1** was predominately in the chamber vasculature. At 1 hour and in particularly 4 hours after administration increased fluorescence was observed in tumor tissue immediately surrounding the small vessels in the tumor microvasculature. After 24 hours conjugate **1** was clearing from tumor and normal tissue. Figure 5H–J shows the fluorescence pharmacokinetics of conjugate **1** in tumor tissue





**Figure 3.** (A) Kinetics of fluorescence bleaching of photosensitizers (■) Ce6, (▲) conjugate **1** and (●) conjugate **2** in PBS under 652 nm irradiation (the fluorescence emission spectra of photosensitizers have been detected with the excitation wavelength  $\lambda_{exc} = 405$  nm). Insert: Singlet oxygen ( $^1O_2$ ) production by Ce6 and Ce6-conjugates; (B) Conjugates receptor-specificity proliferation of K562  $sst_2^+$  and WT cells after PDT (5 J.cm $^{-2}$  light dose with 652 nm irradiation). Different concentrations of conjugates **1** and **2** were incubated with  $sst_2^+$  and WT cells: (■) in the absence of unlabeled Octreotide and (□) with Octreotide co-treatment ( $c = 10^{-5}$  M). Test of significance between the group of conjugates phototoxicity in absence and in presence of Octreotide has been performed using Student's test. In case of conjugate **1** value  $p < 0.005$  is deemed significant, whereas for conjugate **2**  $p < 0.05$ ; (C) The effect of the  $sst_2$  expression on the uptake of conjugate **1**, **2** and un-conjugated Ce6. The photosensitizers ( $c = 1 \mu M$ ) were incubated with K562 cells in serum-free medium (top) and in the medium with 5% FCS (bottom): (■) K562  $sst_2^+$ , (●) K562 WT cells.  
doi:10.1371/journal.pone.0104448.g003

and in chamber vasculature. The pharmacokinetics of conjugate **1** in tumor tissue were significantly different from free Ce6. Conjugate **1** fluorescence peaks between 20 and 60 minutes whereas Ce6 gradually increased over the first 3 days after administration (Figure 5H). Both drugs were cleared during the time course of the experiment. Figure 5I shows that co-administration of Octreotide significantly reduced the uptake of conjugate **1** in tumor tissue. Figure 5J shows the uptake of conjugate **1** in tumor vasculature was also reduced when Octreotide was administered.

## Discussion

Tumor cells and tumor vasculature are both potential targets of PDT. However, the preference of cellular versus vascular targeting is dependent upon the relative distribution of photosensitizers in each compartment. This relative distribution is determined by the pharmacokinetics of the photosensitizer. In most cases effective PDT relies on the strategic choice of drug-light interval between the administration of photosensitizer and illumination [8]. In addition to the passive targeting approach, active targeting of tumor endothelial and cellular markers has been studied extensively [8,9]. However, for targeted approaches, either only vasculature, or only tumor cells have been targeted. A high density of  $sst_2^+$  has been reported in neuroendocrine tumors, angiogenic vessels and peritumoral vessels [17–21]. This makes  $sst_2$  an attractive target for tumor therapy, since it can target both tumor cells and tumor neovasculature simultaneously [12–21].

Our experiments showed that the conjugation of [Tyr3]-octreotate with the Ce6 improves its ability to target cancer cells over-expressing  $sst_2$ . However, surprisingly, even though both conjugates showed receptor binding, specific in vitro targeting was only confirmed for one of the conjugates we studied. The decrease of phototoxicity of conjugate **1** on K562  $sst_2^+$  cells after Octreotide co-treatment together with no evidence of phototoxicity in K562 WT cells, can be explained by differences in concentration. A substantial increase in concentration of conjugate **1** by  $sst_2^+$  cells compared to WT cells illustrates the role of  $sst_2$  in the uptake of conjugate **1**. This was in contrast to conjugate **2** where although conjugate **2** was found to be a more potent photosensitizer, no difference in the intracellular concentration of conjugate **2** was demonstrated in  $sst_2^+$  compare to WT cells. Similarly, its PDT effect on  $sst_2^+$  cells was not inhibited by Octreotide co-treatment and showed comparable phototoxicity in WT cells. These results indicate the absence or a minor role of specific uptake of conjugate **2** by  $sst_2$ . This result is in contrast to the binding affinity of conjugate **2** which was found to have a high affinity to  $sst_2$ . This discrepancy is likely to be a consequence of the fact that conjugate **2** is highly hydrophobic. Because of that the nonspecific accumulation within the cell dominated the specific recognition of conjugate **2** by  $sst_2$ .

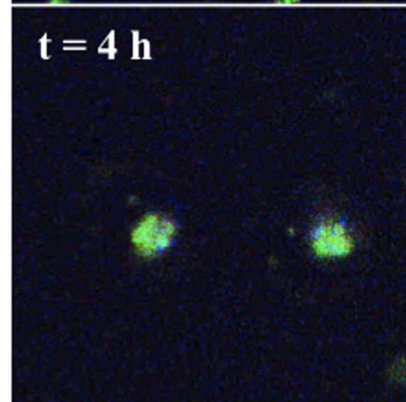
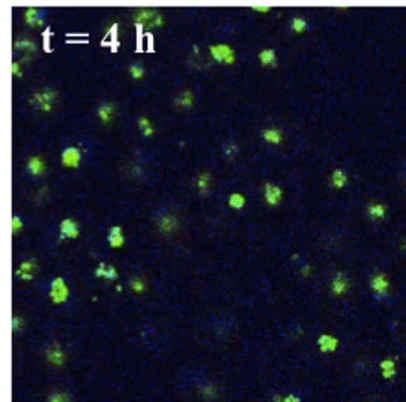
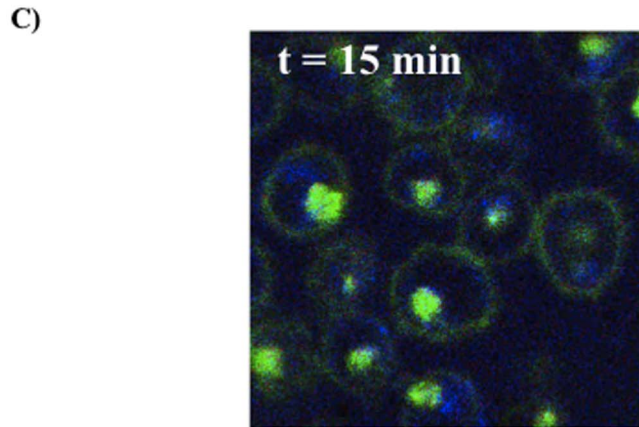
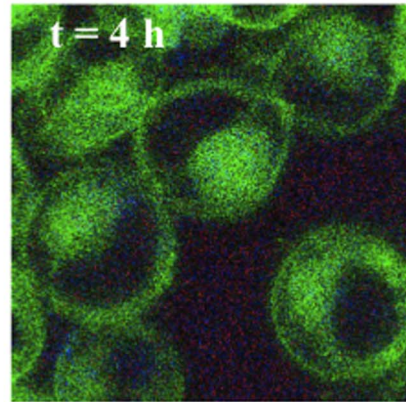
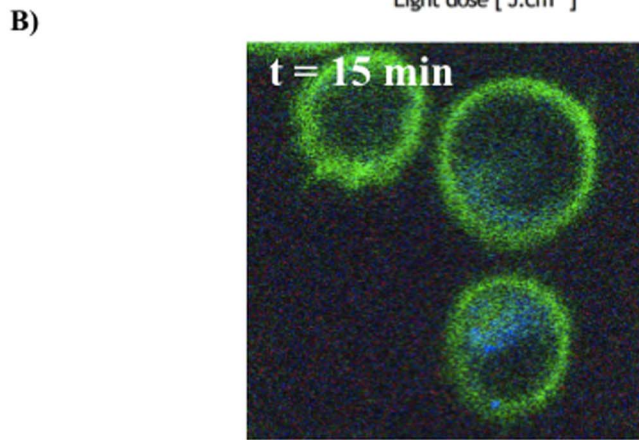
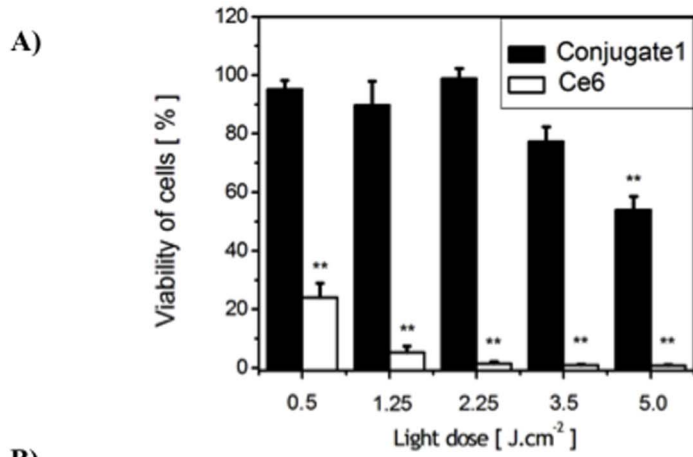
A number of authors have used Ce6 for conjugation with either tumor specific monoclonal antibodies [4–7], or in peptide mediated approaches with insulin [41] or transferrin [42]. Akhlynina et al. [41] demonstrated superior phototoxicity of

conjugates compared to un-conjugated Ce6. However, as the authors stated, despite promising results, the direct applicability in cancer therapy is limited, due to the low expression of insulin receptors on most hepatoma cells. This shows that while conjugation enhanced phototoxic properties of conjugate compared to free Ce6, the selectivity of conjugate uptake can be hampered by low receptor expression.

In the work of Del Governatore [5], several Ce6 molecules were covalently attached to anti-colon cancer monoclonal antibody 17.1A, in a way that conjugates had either cationic or anionic charges. Both immunoconjugates showed in vitro selectivity for antigen-positive target cells with a specificity of uptake (by a factor of approximately 1.9) that is similar to what we have found in the present study. Further in vivo biodistribution studies by the same investigators [4] showed that the anionic immunoconjugate showed both a higher absolute uptake of Ce6 in tumor tissue and a superior selectivity for tumor over normal tissue.

It is interesting to consider our finding that conjugate **1** is the least efficient photosensitizer at equivalent concentration of incubation and light fluence. There are a number of potential explanations for the higher efficacy of un-conjugated Ce6 than of conjugate **1**. First, the quantitative uptake of Ce6 into cells may play an important role in efficacy. Second, as a result of conjugation, the photochemical reactivity of un-conjugated Ce6 versus conjugate might differ and third, the site of intracellular localization is different of the photosensitizer and is known to be an important factor [10]. Our concentration uptake data showed that for a 4 h incubation period, un-conjugated Ce6 and conjugate **1** are taken up by  $sst_2^+$  cells equally, ( $9 \times 10^{-8}$  M was found for both photosensitizers). This means, that the higher PDT activity of Ce6 on  $sst_2^+$  cells cannot be related to uptake differences.

To investigate our second hypothesis, the photophysical properties of each photosensitizer(-conjugate) were determined. The spectroscopic changes for both conjugates and these were most significant for conjugate **2** (broadening of the absorption spectra and decrease in fluorescence quantum yield as a result of increase hydrophobicity and insolubility in aqueous media). The quantum yield of  $^1O_2$  observed with un-conjugated Ce6 was not significantly altered by conjugation of [Tyr3]-octreotate molecule to Ce6. In fact,  $^1O_2$  production was higher for conjugate **1** ( $\Phi_{\Delta} = 0.73 \pm 0.02$ ) than that for Ce6 ( $\Phi_{\Delta} = 0.64 \pm 0.08$ ). Figure 3 also illustrates that conjugate **1** is more photo-stable. This might be explained by the involvement of peptide in the bleaching process. Although conjugate **1** has a high quantum yield of  $^1O_2$  production, the presence of peptide seems to prevent the attack of the tetrapyrrole ring. It is known that the presence of aminoacids, in this case within the conjugate, can influence the consumption of reactive oxygen species [43,44]. However, the mechanisms underlying these processes are likely to be complex. This is illustrated by the fact that conjugate **2** showed a similar rate of photobleaching to Ce6. Here the spatial conformation of the amino acids and thus their susceptibility to  $^1O_2$  attack may be different. Clearly, while additional information about the peptide conformation within conjugates **1** and **2** is required to fully understand these kinetics of photobleaching, our data show that

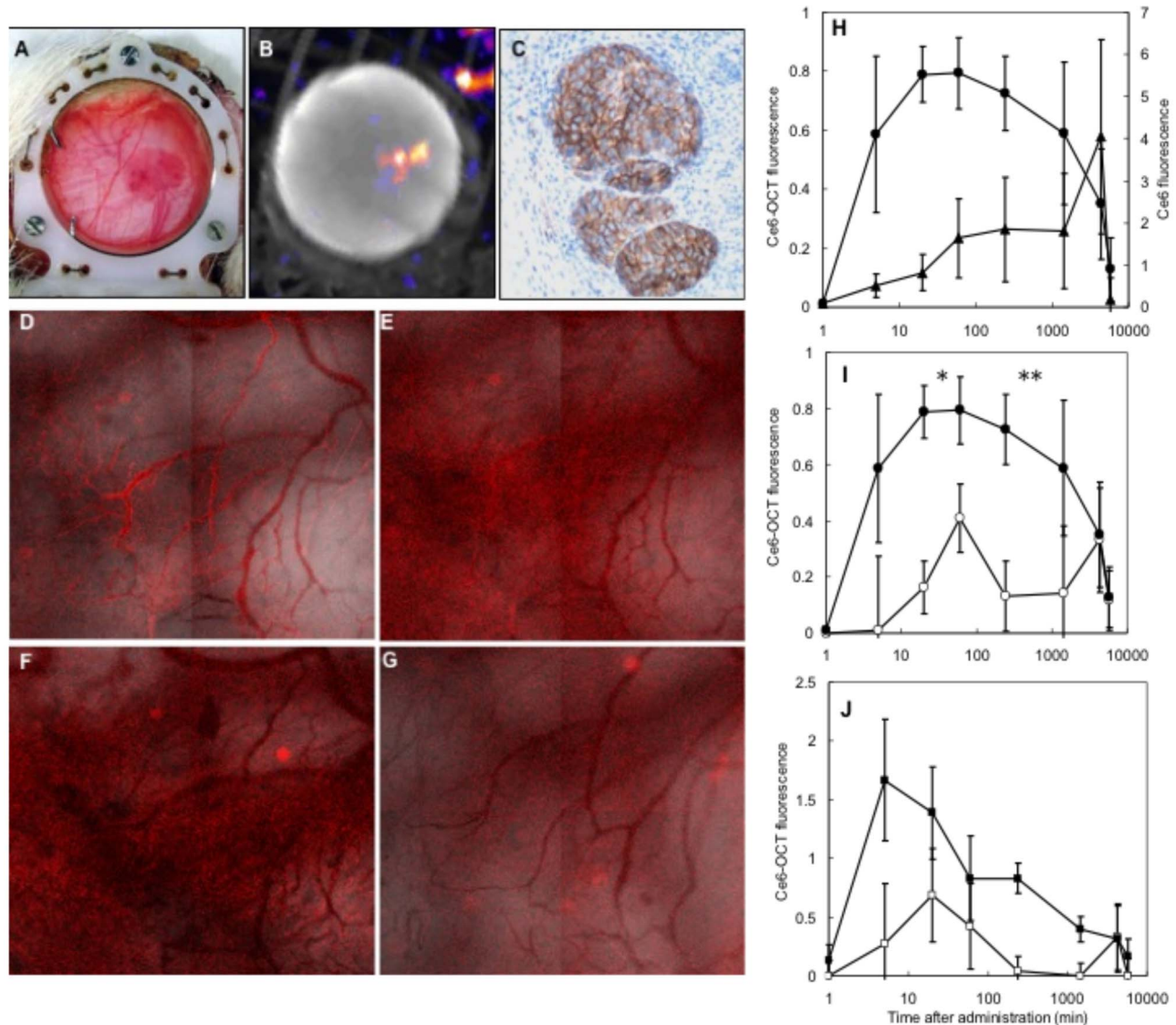


**Figure 4.** (A) PDT effects of un-conjugated Ce6 and conjugate **1** ( $c=1 \mu\text{M}$ ) on K562  $\text{sst}_2^+$  cell viability as a function of light dose. There is a statistically significant difference between the viability of cells incubated with un-conjugated Ce6 followed by irradiation with different light doses and the non-irradiated cells (groups of controls) ( $p<0.005$ ). In case of conjugate **1**, only  $5 \text{ J}\cdot\text{cm}^{-2}$  light dose shows the significant difference ( $p<0.005$ ) when compare to its control (e.g. non-irradiated cells incubated with conjugate **1**); (B) Confocal fluorescence images of un-conjugated Ce6 in K562  $\text{sst}_2^+$  cells after 15 min and 4-h incubation in serum-free medium; (C) Confocal fluorescence images of conjugate **1** after 15 min (top left image) and 4-h incubation (top right image) in serum-free medium. Bottom right image shows conjugate **1** localization 4-h after incubation and its corresponding transmission image (bottom left).  
doi:10.1371/journal.pone.0104448.g004

differences in concentration, photostability and  $^1\text{O}_2$  generation do not explain the higher phototoxicity of un-conjugated Ce6 compared to conjugate **1**.

Therefore, of the three hypotheses, the later, a localization difference would appear to play the dominant role. Upon irradiation, cytotoxic products will be formed at sites where

photosensitizers are localized. Photosensitizers initially located in lysosomes, kill cells less efficiently than those targeted at the mitochondria or endoplasmic reticulum [45]. In our study, we showed a dramatically different localization pattern for un-conjugated Ce6 compared to conjugate **1**. Fluorescence of un-conjugated Ce6 was present diffusely in cellular membranes. In



**Figure 5.** (A) AR42J tumor in the skin-fold observation chamber; (B) Corresponding OctreoScan-SPECT/CT fusion image; (C) Immunohistochemical  $\text{sst}_2$  stain; (D–G) Conjugate **1** fluorescence/white light transmission fusion images 5 min, 1 h, 4 h and 24 h after conjugate administration respectively; (H) In-vivo fluorescence pharmacokinetics of Ce6 (▲) ( $n=3$ ) and conjugate **1** (●) ( $n=4$ ) in AR42J tumor tissue in the rat skin-fold observation chamber; (I) In-vivo fluorescence pharmacokinetics of conjugate **1** in tumor tissue with (○) and without (●) the addition of free Octreotide; (J) In-vivo fluorescence pharmacokinetics of conjugate **1** in the tumor vasculature with (□) and without (■) the addition of free Octreotide. There is a statistically significant difference between the fluorescence in tumor tissue between the blocked and the unblocked groups 20 min ( $p=0.04$ ) and 20 min ( $p=0.004$ ) after administration  
doi:10.1371/journal.pone.0104448.g005

contrast, conjugate **1** was sequestered in discrete, intracytoplasmic compartments. Since conjugate **1** is specifically recognized by the  $sst_2$  receptor it is likely that the  $sst_2$  endocytosis pathway [12,13] is the main mechanism of the internalization of conjugate **1**.

Moreover, the highly localized pattern of conjugate accumulation for all of the incubation times shows that conjugate **1** does not diffuse into other cell compartments. Our data on the spectral properties of un-conjugated Ce6 and Ce6-conjugates shows evidence of pH-dependent modifications of photosensitizers in the physiological relevant pH range. The inflection point at pH  $5.38 \pm 0.06$  of conjugate **1** is well within pH range associated with the somatostatin receptor endocytosis pathway. A pH as low as 4.7 has been determined during this vesicular maturation [46]. Changes in the ionization state of molecule might mean it is difficult for the conjugate to pass the membrane of the endosomal/lysosomal compartments [47] and thus be trapped within these organelles. High local concentrations of photosensitizers and their conjugates are known to lead to the formation of aggregates that have reduced PDT activity [48]. While the formation of aggregates in endosomal compartments may represent a significant limitation of our approach an interesting future approach may be the design of novel light treatment regimens that utilize fractionated illumination to induce relocation of the conjugate from its original localization site and/or its disaggregation during dark intervals in therapy.

Given the differences in *in-vitro* results for each conjugate, conjugate **1** was selected to determine *in-vivo* pharmacokinetics in an  $sst_2^+$  tumor model. Encouragingly the pharmacokinetics of fluorescence in AR42J tumors showed conjugate **1** exhibited a receptor mediated uptake that can be abrogated with co-administration of Octreotide. The magnitude of this reduction in fluorescence with co-treatment with Octreotide is a useful indicator of the *in-vivo* selectivity of conjugate **1** in  $sst_2^+$  tumor tissue. Between 20 minutes and 4 hours after the administration of conjugate **1** there was on average  $>4\times$  less fluorescence after the administration of Octreotide. This level of selectivity is somewhat larger than that we found in our *in-vitro* studies. This method of assessing selectivity has the advantage that the same type of tissue is being compared and therefore overcomes differences in tissue optical properties (blood absorption and differences in scattering) that are known to influence fluorescence imaging techniques. It is also important to recognize that Octreotide is not present in excess since the effective concentration was lower than that of conjugate **1**. This may lead to a small underestimate of the selectivity of conjugate **1** for  $sst_2^+$  tumor tissue. It is also encouraging that we observe at least a partial  $sst_2$  receptor mediated uptake in the tumor vasculature that was also reduced by co-administration with Octreotide. This result illustrates the potential of a dual strategy targeting  $sst_2^+$  tumour and neo-vasculature that is known to also express the  $sst_2$  receptor. While the rat-skin fold window chamber transplanted with  $sst_2^+$  AR42J acinar pancreas tumors was used to determine the pharmacokinetics of conjugate **1**, we believe that this model is not suitable to perform PDT toxicity studies, since the

distribution of oxygen and light are important factors. In a previous study we have shown, that it is possible to simultaneously monitor the photosensitizer photobleaching, in addition to fluence (rate), hemoglobin oxygen saturation, and blood volume during PDT, without interruptions to the therapeutic illumination [49]. Since these parameters are important factors that influence the outcome of PDT, we aim to incorporate these measurements in future therapeutic studies *in-vivo* in orthotopic tumor models.

We are not the first to investigate the use of  $sst$  targeted PDT *in-vivo*. A group from Montana State University has previously reported results in which tetrapyrrole based photosensitizers are conjugated with octreotate-targeting peptides that are being studied for the application of multi-photon activated PDT [50,51]. While the results of these pre-clinical studies are encouraging it should be noted that they have been achieved using the local infiltration of photosensitizer conjugate. This administration route was chosen because therapeutic doses could not be injected i.v. via the mouse tail vein because of the high viscosity of their photosensitizer conjugate. In the present study we have chosen to administer conjugates systemically using an i.v injection because we believe that this administration route has a significantly greater translational potential.

In summary, our studies have clearly shown the impact of conjugation on photosensitizer properties. The differences between our conjugates demonstrate the necessity of careful study of the photochemical and photophysical properties of photosensitizer, when the conjugation is involved. This knowledge is important not only as a potential predictor of success of a conjugate as a PDT agent but as we have shown, the physicochemical properties of conjugates are important factors in the process of internalization and specificity of cellular uptake. While these initial *in-vitro* and *in-vivo* data are encouraging, there remain questions, which will only be answered by PDT response studies *in-vivo*.

## Supporting Information

**File S1** Synthesis of Ce6-coupled somatostatin analogues and characterization. (DOC)

## Acknowledgments

We thank Dr. G. Bell from Howard Hughes Medical Institute, The University of Chicago, Chicago, USA for his generous gift of cDNA encoding the human  $sst_2$  receptor.

## Author Contributions

Conceived and designed the experiments: MH LH DR SA SK. Performed the experiments: SK HDB YY KW APH PK MB. Analyzed the data: SK DR LH HDB PK YY. Contributed reagents/materials/analysis tools: SA YY TH AL HS. Contributed to the writing of the manuscript: SK DR WH LH YY SA.

## References

- Hasan T, Ortel B, Solban N, Pogue B (2006) Photodynamic therapy of cancer. 7<sup>th</sup> ed. In: Kufe DW, Bast RC, Hait WN, Hong WK, Pollock RE, Weichselbaum RR, et al. Cancer medicine. Hamilton (Ontario): B. C. Decker, Inc. pp. 537–48.
- Zhu TC, Finlay JC, Hahn SM. (2005) Determination of the distribution of light, optical properties, drug concentration, and tissue oxygenation in vivo in human prostate during motexafin lutetium-mediated photodynamic therapy. J Photochem Photobiol B: Biol 79(3): 231–241.
- Dougherty TJ (2002) An update on photodynamic therapy applications. J Clin Laser Med Surg 20: 3–7.
- Del Governatore M, Hamblin MR, Shea ChR, Rizvi I, Molpus KG, et al. (2000) Experimental photoimmunotherapy of hepatic metastasis of colorectal cancer with a 17.1A chlorine e6 immunoconjugate. Cancer Res 60: 4200–5.
- Del Governatore M, Hamblin MR, Piccinini EE, Ugolini G, Hasan T. (2000) Targeted photodestruction of human colon cancer cells using charged 17.1A chlorine e6 immunoconjugates. British Journal of Cancer 82(1): 56–64.
- Oseroff AR, Ohuoha D, Hasan T, Bommer JC, Yarmush ML. (1986) Antibody-targeted photolysis: Selective photodestruction of human T-cell leukemia cells using monoclonal antibody-chlorin e6 conjugates. Proc Natl Acad Sci USA 83: 8744–8.

7. Soukos NS, Hamblin MR, Keel S, Fabian RL, Deutsch TF, et al. (2001) Epidermal growth factor receptor-targeted immunophotodiagnosis and photodynamic therapy of oral precancer in vivo. *Cancer Res* 61: 4490–6.
8. Chen B, Pogue BW, Hoopes PJ, Hasan T (2006) Vascular and cellular targeting for photodynamic therapy. *Crit Rev Eukaryot Gene Expr* 16(4): 279–305.
9. Sharman WM, van Lier JE, Allen CM (2004) Targeted photodynamic therapy via receptor mediated delivery systems. *Advanced Drug Delivery Reviews* 56: 53–76.
10. Rosenkranz AA, Jans DA, Sobolev AS (2000) Targeted intracellular delivery of photosensitizers to enhance photodynamic efficiency. *Immunol Cell Biol* 78: 452–64.
11. Moan J, Berg K (1991) The photodegradation of porphyrins in cells can be used to estimate the lifetime of singlet oxygen. *Photochem Photobiol* 53: 549–53.
12. Reubi JC (2004) Somatostatin and other peptide receptors as tools for tumor diagnosis and treatment. *Neuroendocrinology* 80: 51–6.
13. Ten Bokum AMC, Hofland LJ, van Hagen PM (2000) Somatostatin and somatostatin receptors in the immune system: a review. *Eur Cytokine Netw* 11(2): 161–76.
14. Gibril F, Reynolds JC, Doppman JL, Chen CC, Venzon DJ, et al. (1996) Somatostatin receptor scintigraphy: Its sensitivity compared with that of other imaging methods in detecting primary and metastatic gastrinomas. *Ann Intern Med* 125: 26–34.
15. Waldherr C, Pless M, Maecke HR, Haldemann A, Mueller-Brand J (2001) The clinical value of [<sup>90</sup>Y-DOTA]-D-Phe<sup>1</sup>-Tyr<sup>3</sup>-octreotide (<sup>90</sup>Y-DOTA-TOC) in the treatment of neuroendocrine tumours: A clinical phase II study. *Ann Oncol* 12: 941–45.
16. Kwekkeboom DJ, Kam BL, van Essen M, Teunissen JJ, van Eijck CH, et al. (2010) Review: Somatostatin-receptor-based imaging and therapy of gastroenteropancreatic neuroendocrine tumors. *Endocr Relat Cancer* 17(1): R53–73.
17. Dutour A, Kumar U, Panetta R, Ouafik LH, Fina F, et al. (1998) Expression of somatostatin receptor subtypes in human brain tumors. *Int J Cancer* 76: 620–27.
18. Watson JC, Balster DA, Gebhart BM, O'Dorioso TM, O'Dorioso MS, et al. (2001) Growing vascular endothelial cells express somatostatin subtype 2 receptors. *Br J Cancer* 85: 266–72.
19. Denzler B, Reubi JC (1999) Expression of somatostatin receptors in peritumoral veins of human tumors. *Cancer* 85: 188–98.
20. Reubi JC (2003) Peptide receptors as molecular targets for cancer diagnosis and therapy. *Endocrine Reviews* 24(4): 389–427.
21. Garcia de la Torre N, Wass JA, Turner HE (2002) Antiangiogenic effects of somatostatin analogues. *Clin Endocrinol (Oxf)* 57: 425–41.
22. Jeffrey L, MacDonald IJ, Ciesielski MJ, Barone T, Potter WR, et al. (2001) 2-[1-Hexyloxyethyl]-2-devinyl pyrophosphoribide-a (HPPH) in a nude rat glioma model: Implications for photodynamic therapy. *Lasers Surg Med* 29(5): 397–405.
23. Cunderlikova B, Gangeskar L, Moan J (1999) Acid-base properties of chlorin e6: relation to cellular uptake. *J Photochem Photobiol B: Biol* 53: 81–90.
24. Isakau HA, Parkhats MV, Knyukshto VN, Dzhagarov BM, Petrov EP, et al. (2008) Toward understanding the high PDT efficacy of chlorine e6-polyvinylpyrrolidone formulations: Photophysical and molecular aspects of photosensitizer-polymer interaction in vitro. *J Photochem Photobiol B: Biol* 92: 165–74.
25. Sahai D, Lo JL, Hagen IK, Bergstrom L, Chernomorsky S, et al. (1993) Metabolically convertible lipophilic derivatives of pH-sensitive amphiphatic photosensitizers. *Photochem Photobiol* 58(6): 803–8.
26. Kostenich GA, Zhuravkin IN, Zhavrid EA (1994) Experimental grounds for using chlorin e6 in the photodynamic therapy of malignant tumours. *J Photochem Photobiol B: Biol* 22: 211–7.
27. Rotomskis R, Streckyte G, Bagdonas S (1997) Phototransformations of sensitizers I. Significance of the nature of the sensitizer in the photobleaching process and photoproduct formation in aqueous solution. *J Photochem Photobiol B: Biol* 39: 167–71.
28. Hongying Y, Fuyuan W, Zhiyi Z (1999) Photobleaching of chlorines in homogenous and heterogenous media. *Dyes and Pigments* 43: 109–17.
29. Jordan M, Wurm F (2004) Transfection of adherent and suspended cells by calcium phosphate. *Methods* 33(2): 136–43.
30. Ferone D, van Hagen PM, van Koetsveld PM, Zuijderwijk J, Mooy DM, et al. (1999) In vitro characterization of somatostatin receptors in the human thymus and effects of somatostatin and octreotide on cultured thymic epithelial cells. *Endocrinology* 140: 373–80.
31. Lakowicz JR (2006) Principles of fluorescence spectroscopy 3rd ed. New York: Springer.
32. Zenkevich E, Sagun E, Knyukshto V, Shulga A, Mironov A, et al. (1996) Photophysical and photochemical properties of potential porphyrin and chlorine photosensitizers for PDT. *J Photochem Photobiol B: Biol* 33: 171–80.
33. Parkhats MV, Knyukshto VN, Isakov GA, Petrov PT, Lepeshkevich SV, et al. (2003) Spectral-luminescent studies of the “Photolon” photosensitizer in model media and in blood of oncological patients. *J Appl Spectrosc* 70: 921–26.
34. van Veen RLP, Nyst H, Rai Indrasari S, Adham Yudharto M, Robinson DJ, et al. (2006) *In vivo* fluence rate measurements during Foscan-mediated photodynamic therapy of persistent and recurrent nasopharyngeal carcinomas using a dedicated light applicator. *J Biomed Opt* 11: 041107.
35. Molecular Probes (2004) Product information. Available: <http://probes.invitrogen.com/media/pis/mp36002.pdf>
36. Wilkinson F, Helman WP, Ross AB (1993) Quantum yields for the photosensitized formation of the lowest electronically excited singlet state of molecular oxygen in solution. *J Phys Chem Ref Data* 22: 113–262.
37. Redmond RW, Gamlin JN (1999) Invited review: A compilation of singlet oxygen yields from biologically relevant molecules. *Photochem Photobiol* 70: 391–475.
38. Delhanty PJD, van Koetsveld PM, Gauna C, van de Zande B, Vitale G, et al. (2007) Ghrelin and its unacylated isoform stimulate the growth of adrenocortical tumor cells via an anti-apoptotic pathway. *Am J Physiol Endocrinol Metab* 293: E302–9.
39. Hofland LJ, van Koetsveld PM, Lamberts SW (1990) Percoll density gradient centrifugation of rat pituitary tumor cells: a study of functional heterogeneity within and between tumors with respect to growth rates, prolactin production and responsiveness to the somatostatin analog SMS 201-995. *Eur J Cancer* 26: 37–44.
40. Li L, ten Hagen TL, Schipper D, Wijnberg TM, van Rhooen GC, et al. (2010) Triggered content release from optimized stealth thermosensitive liposomes using mild hyperthermia. *J Control Release* 143: 274–9.
41. Akhlyntina TV, Rosenkranz AA, Jans DA, Sobolev AS (1995) Insulin-mediated intracellular targeting enhances the photodynamic activity of chlorine e6. *Cancer Res* 55: 1014–9.
42. Cavanaugh PG (2002) Synthesis of chlorine e6-transferrin and demonstration of its light-dependent in vitro breast cancer cell killing ability. *Breast Cancer Research and Treatment* 72: 117–30.
43. Michaeli A, Feitelson J (1994) Reactivity of singlet oxygen toward amino acids and peptides. *J Photochem Photobiol* 59 (3): 284–9.
44. Straight RC, Spikes JD (1985) Photosensitized oxidation of biomolecules. In: Frimer AA. *Singlet O<sub>2</sub> Vol. IV*. CRC Press, Boca Raton, FL. pp. 91–143.
45. Kessel D (2004) Correlation between subcellular localization and photodynamic efficacy. *J. Porphyrins Phthalocyanines* 08: 1009–1014.
46. Ohkuma S, Poole B (1978) Fluorescence probe measurement of the intralysosomal pH in living cells and the perturbation of pH by various agents. *Proc Natl Acad Sci USA* 75: 3327–31.
47. De Duve C, De Barse T, Poole B, Trouet A, Tulkens P, et al. (1974) Lysosomotropic agents. *Biochem Pharmacol* 23: 2495–2531.
48. Kelbasuskas L, Dietel W (2002) Internalization of aggregated photosensitizers by tumor cells: Subcellular time-resolved fluorescence spectroscopy on derivatives of pyropheophorbide-a esters and Chlorin e6 under femtosecond one- and two-photon excitation. *Photochem Photobiol* 76(6): 686–94.
49. Kruijt B, van der Ploeg-van den Heuvel A, de Bruijn HS, Sterenberg HJ, Amelink A, et al. (2009) Monitoring interstitial m-THPC-PDT in vivo using fluorescence and reflectance spectroscopy. *Lasers Surg Med* 41(9): 653–64.
50. Starkey JR, Rebane AK, Drobizhev MA, Meng F, Gong A, et al. (2008) New two-photon activated photodynamic therapy sensitizers induce xenograft tumor regressions after near-IR laser treatment through the body of the host mouse. *Clin Cancer Res* 14(20): 6564–73.
51. Starkey JR, Pascucci EM, Drobizhev MA, Elliott A, Rebane AK (2010) Vascular targeting to the SST2 receptor improves the therapeutic response to near-IR two-photon activated PDT for deep-tissue cancer treatment. *Biochim Biophys Acta* 1830(10): 4594–603.