

The Linacre Quarterly

Volume 31 | Number 4

Article 10

November 1964

Mercy Hospital, Chicago -- Past, Present, Future

Robert L. Schmitz

Follow this and additional works at: <http://epublications.marquette.edu/lnq>

Recommended Citation

Schmitz, Robert L. (1964) "Mercy Hospital, Chicago -- Past, Present, Future," *The Linacre Quarterly*: Vol. 31: No. 4, Article 10.
Available at: <http://epublications.marquette.edu/lnq/vol31/iss4/10>

Mercy Hospital, Chicago—

Past, Present, Future

Mercy Hospital in Chicago has been involved in medical education and research since 1853 when it became affiliated with Rush Medical College. The Sisters of Mercy had been granted a charter for the city's first private hospital in 1849, just a few years before. In 1859 it also affiliated with the Chicago Medical College which became the Medical School of Northwestern University. In 1920 the hospital transferred its affiliation to the Medical School of Loyola University, now known as the Stritch School of Medicine. This latter association has continued to-date to give the hospital a total teaching experience of more than 100 years.

In 1889 the hospital organized a School of Nursing, only the second one in Illinois at the time, and in 1931 this school affiliated with St. Xavier College to offer the first collegiate nursing program in the State. This program also continues today.

Probably the most illustrious physician ever to join the Mercy staff was John B. Murphy, "The stormy petrel of surgery," as Loyal Davis called him. He did his first operation there in 1889 and soon his famous clinics brought standing room only crowds to the Amphitheatre. His many volumes of lectures and case reports he gave at these clinics are still read with interest and profit today. The present Amphitheatre is named in his honor.

Robert L. Schmitz, M.D., F.A.C.S., Chief of Staff, Mercy Hospital; Associate Clinical Professor, Stritch School of Medicine, Loyola University, Chicago, Illinois.

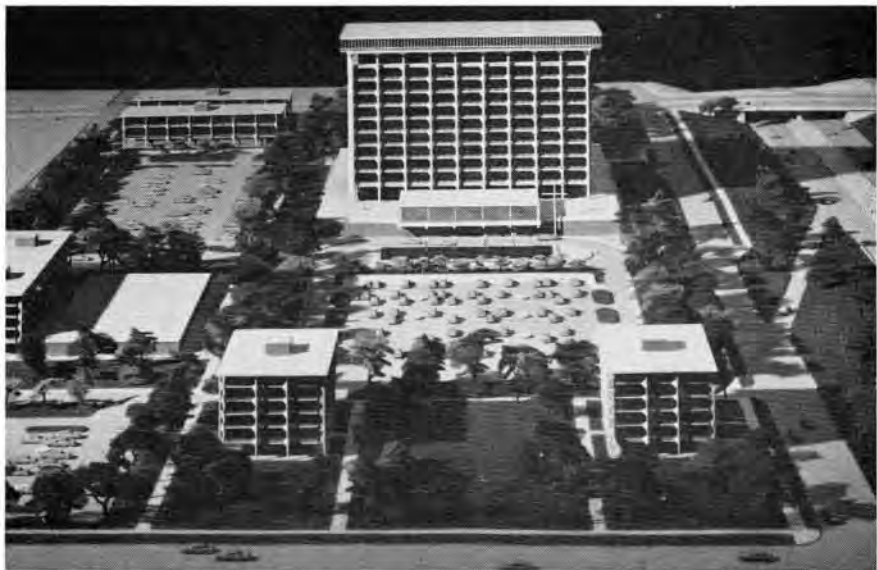
NOVEMBER, 1964



Present Hospital

Today's Mercy Hospital is an old plant made up of several units, the first of which was constructed in 1869. But in this environment, high grade medicine is practiced and taught. In 1962 the out-patient departments handled 76,000 visits, 10,274 patients were hospitalized in its 365 beds and almost 7,000 operations were performed in its surgical suites. But the obstacles presented by such an antiquated physical plant are many and they grow every day so that a building program is essential.

Therefore, the Sisters of Mercy have launched a \$24,000,000 building program for "Tomorrow's Mercy." The new Mercy Medical Center will consist of a six building complex: a



NEW HOSPITAL

500-bed, 12-story Hospital, a Nurses' Residence, an Intern-Resident Apartment Building, a Research Building, a Nursing Home and a Home for the Elderly.

The Medical Center will remain in its present location on the near South Side of Chicago on Lake Michigan and near McCormick Place, the Convention Center of the City. This area is undergoing one of the most phe-

nomonal rehabilitations in the history of Chicago. Our immediate neighbors are the Michael Reese Medical Center and the Illinois Institute of Technology.

The Intern-Resident Apartment Building is completed and the Hospital proper is underway. When you are next in Chicago pay "Tomorrow's Mercy" a visit.

