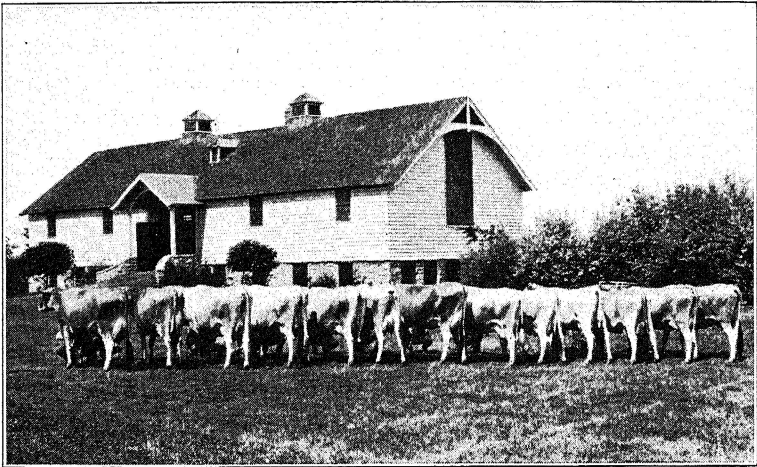


UNIVERSITY OF MISSOURI COLLEGE OF AGRICULTURE
AGRICULTURAL EXPERIMENT STATION
BULLETIN 206

A Comparison of Jersey Sires

Based on the Average Mature Equivalent
Fat Production of the Daughters



Thirteen daughters of Sultana's Virginia Lad, a sire of 25 Register of Merit daughters, averaging 579 pounds fat on a mature basis.

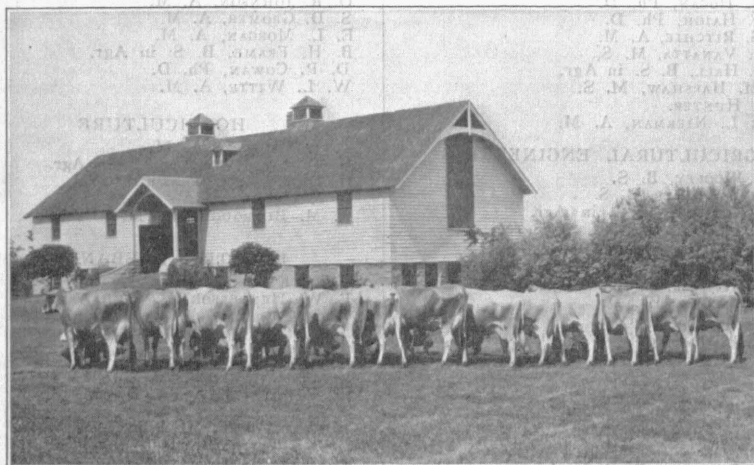
COLUMBIA, MISSOURI

OCTOBER, 1923

UNIVERSITY OF MISSOURI COLLEGE OF AGRICULTURE
AGRICULTURAL EXPERIMENT STATION
BULLETIN 206

A Comparison of Jersey Sires

Based on the Average Mature Equivalent Fat Production of the Daughters



Thirteen daughters of Sultana's Virginia Lad, a sire of 25 Register of Merit daughters, averaging 579 pounds fat on a mature basis.

COLUMBIA, MISSOURI

OCTOBER, 1923

UNIVERSITY OF MISSOURI
COLLEGE OF AGRICULTURE
Agricultural Experiment Station

BOARD OF CONTROL
THE CURATORS OF THE UNIVERSITY OF MISSOURI

EXECUTIVE BOARD OF THE UNIVERSITY

E. LANSING RAY,
St. Louis

P. E. BURTON,
Joplin

H. J. BLANTON,
Paris

ADVISORY COUNCIL
THE MISSOURI STATE BOARD OF AGRICULTURE

OFFICERS OF THE STATION

STRATTON DULUTH BROOKS, A. M., LL. D., PRESIDENT OF THE UNIVERSITY
F. B. MUMFORD, M. S., DIRECTOR

STATION STAFF
OCTOBER, 1923

AGRICULTURAL CHEMISTRY

A. G. HOGAN, Ph. D.
L. D. HAIGH, Ph. D.
W. S. RITCHIE, A. M.
E. E. VANATTA, M. S.
A. R. HALL, B. S. in Agr.
H. M. HARSHAW, M. S.
J. E. HUNTER.
JOHN L. NIERMAN, A. M.

AGRICULTURAL ENGINEERING

J. C. WOOLEY, B. S.
MACK M. JONES, B. S.
W. C. BONEY, B. S. in Agr.

ANIMAL HUSBANDRY

E. A. TROWBRIDGE, B. S. in Agr.
L. A. WEAVER, B. S. in Agr.
A. G. HOGAN, Ph. D.
F. B. MUMFORD, M. S.
D. W. CHITTENDEN, B. S. in Agr.
M. T. FOSTER, B. S.

BOTANY

W. J. ROBBINS, Ph. D.
I. T. SCOTT, B. S. in Agr.

DAIRY HUSBANDRY

A. C. RAGSDALE, B. S. in Agr.
WM. H. E. REID, A. M.
SAMUEL BRODY, M. A.
C. W. TURNER, A. M.
D. H. NELSON, A. M.
W. P. HAYS, B. S. in Agr.
J. B. NELSON, A. M.

ENTOMOLOGY

LEONARD HASEMAN, Ph. D.
K. C. SULLIVAN, A. M.
O. R. MCBRIDE, B. S. in Agr.
NEELY TURNER, B. S. in Agr.

FIELD CROPS

W. C. ETHERIDGE, Ph. D.
C. A. HELM, A. M.
L. J. STADLER, Ph. D.
O. W. LETSON, A. M.
MISS REGINA SCHULTE, A. B.*

RURAL LIFE

O. R. JOHNSON, A. M.
S. D. GROMER, A. M.
E. L. MORGAN, A. M.
B. H. FRAME, B. S. in Agr.
D. R. COWAN, Ph. D.
W. L. WITTE, A. M.

HORTICULTURE

T. J. TALBERT, A. M.
H. G. SWARTWOUT, B. S. in Agr.
H. D. HOOKER, JR., Ph. D.
J. T. QUINN, A. M.
A. M. BURROUGHS, A. M.

POULTRY HUSBANDRY

H. L. KEMPSTER, B. S.
E. W. HENDERSON, B. S. in Agr.

SOILS

M. F. MILLER, M. S. A.†
H. H. KRUSEKOPF, A. M.
W. A. ALBRECHT, Ph. D.
F. L. DULEY, A. M.
WM. DEYOUNG, B. S. in Agr.
H. V. JORDAN, B. S. in Agr.
RICHARD BRADFIELD, Ph. D.
E. B. POWELL, B. S. in Agr.
R. E. UHLAND, B. S. in Agr.

VETERINARY SCIENCE

J. W. CONNAWAY, D. V. S., M. D.
L. S. BACKUS, D. V. M.
O. S. CRISLER, D. V. M.
A. J. DURANT, A. M.
H. G. NEWMAN, A. M.

OTHER OFFICERS

R. B. PRICE, M. S., Treasurer
LESLIE COWAN, B. S., Secretary
SAM B. SHIRKEY, A. M., Asst. to Director
A. A. JEFFREY, A. B., Agricultural Editor
J. F. BARHAM, Photographer
MISS JANE FRODSHAM, Librarian
E. E. BROWN, Business Manager

*In the service of U. S. Department of Agriculture.

†On leave of absence.

A COMPARISON OF JERSEY SIRES

Based on the Average "Mature Equivalent" Fat Production of the Daughters.

C. W. TURNER AND A. C. RAGSDALE

The transmission of the capacity for butterfat production as measured by the average production of the daughters, is one of the best measures of the value of dairy sires.

It is well known, however, that the productive capacity of dairy cattle changes with age. Records of production made at two years cannot be compared with records made at four years, eight years, or twelve years.

In order to make the greatest use of the records made under the Register of Merit system during the past twenty years, some method must be employed to convert records made at various ages to a comparable basis. While some modifications have been proposed, the common plan has been to use the minimum requirements for entrance to the Register of Merit as a basis of comparison of records made at various ages.

The minimum requirements, however, are not satisfactory as they are entirely arbitrary and are not based on experimental data showing the relation between age and production.

A more satisfactory method of comparing records made at various ages would be made possible by determining the relation between age and production of the records of Jersey cattle made under the Register of Merit system. With the cooperation of the American Jersey Cattle Club, the average yearly production of milk and fat throughout the entire productive life of the Jersey cow was obtained.

The results of this study are shown in Table 1 and Chart 1. It will be seen that fat production gradually increases up to between 7 and 8 years, and then gradually decreases with the onset of old age. The minimum requirements are also plotted being raised 100 pounds for convenience of comparison. It will be seen from the difference in the slope of the two curves that up to 8 or 9 years of age, the older the cow the easier it is for her to exceed the minimum requirements; but that after that age, animals are at a constantly increasing handicap due to the effect of old age on production.

In making use of these data as a basis for converting records made at various ages to a comparable basis, certain limitations of the data should be pointed out. The records are of a selected population as the minimum entrance requirements eliminate all animals incapable

of meeting these standards. The cows of advanced ages are also more or less selected as only cows of exceptional ability as producers would be tested at advanced ages, and due to the declining productive ability as they grow old, enter the Register of Merit with increasing difficulty.

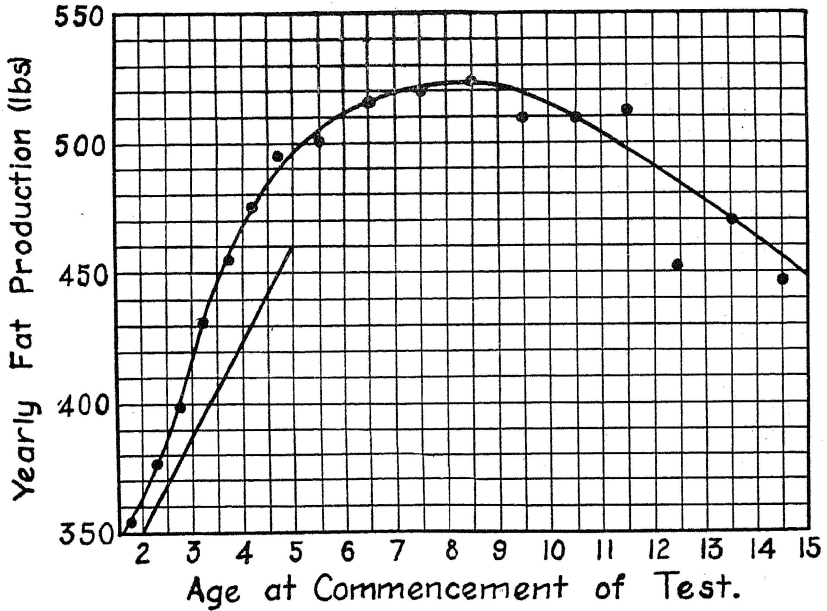


Chart 1.—The relation between age and fat production of Jersey Cattle. The minimum entrance requirements are raised 100 pounds and plotted for convenience in comparing the slope of the curves. Points are the observed values.

TABLE 1.—AVERAGE PRODUCTION OF JERSEY COWS
In 365 Day Test (1903–1921 Inclusive)

Class age	Number animals	Milk, lbs.	Fat, lbs.	Per cent fat
Yearling	947	6500	353	5.43
2 to 2½	2829	6929	377	5.43
2½ to 3	1261	7296	398	5.46
3 to 3½	1271	7983	432	5.41
3½ to 4	992	8412	456	5.41
4 to 4½	978	8770	477	5.44
4½ to 5	809	9239	496	5.37
5 to 6	1487	9479	502	5.30
6 to 7	1067	9902	516	5.21
7 to 8	837	9872	521	5.28
8 to 9	565	9953	524	5.25
9 to 10	355	9492	510	5.23
10 to 11	200	9754	509	5.22
11 to 12	108	9935	513	5.16
12 to 13	58	8692	453	5.21
13 to 14	31	8840	470	5.32
14 to 15	13	8577	447	5.21
15 to 16	8	8235	451	5.48
16 to 17	5	8379	465	5.55
17 to 18	1	9930	590	5.95
18 to 19	1	7590	413	5.44

CONVERTING RECORDS TO THEIR MATURE EQUIVALENT

A record of fat production made at any age can be converted to its "mature equivalent" by multiplying the actual production made at that age by the ratio of the average production at maturity (see Table 1 and Chart 1) to the average production at the age the record in question was made.

The following example will illustrate the method. If a cow between $4\frac{1}{2}$ and 5 years of age produces 632 pounds of fat what would be her "mature equivalent" record? The average fat production at $4\frac{1}{2}$ to 5 years of age as seen from the smooth curve (Chart 1) is 490 pounds of fat and at maturity 524 pounds of fat, therefore her mature equivalent

$$= 632 \times \frac{524}{490} = 675.9 \text{ pounds of fat.}$$

In other words, a Jersey cow capable of producing 632 pounds of fat when between $4\frac{1}{2}$ and 5 years of age, under similar conditions of feeding and management may be expected to produce approximately 675.9 pounds of fat at maturity.

For the convenience of the reader Table 2 is presented giving the conversion factor for records made at various ages. This factor was calculated as shown above using the average fat production data at each age interval from the smoothed curve in Chart 1.

Employing the method just described but using conversion factors with an age interval of one month rather than six months as given in Table 2, a study was made of all Jersey sires having ten or more daughters in the Register of Merit. With the cooperation of the American Jersey Cattle Club all records completed up to July 7, 1923, are included.

TABLE 2.—AGE CONVERSION FACTOR

Age	Ratio*	Age	Ratio*
Yearlings	1.484	$8\frac{1}{2}$ to 9	1.000
2 to $2\frac{1}{2}$	1.448	9 to $9\frac{1}{2}$	1.004
$2\frac{1}{2}$ to 3	1.344	$9\frac{1}{2}$ to 10	1.008
3 to $3\frac{1}{2}$	1.248	10 to $10\frac{1}{2}$	1.012
$3\frac{1}{2}$ to 4	1.164	$10\frac{1}{2}$ to 11	1.025
4 to $4\frac{1}{2}$	1.115	11 to $11\frac{1}{2}$	1.038
$4\frac{1}{2}$ to 5	1.083	$11\frac{1}{2}$ to 12	1.052
5 to $5\frac{1}{2}$	1.052	12 to $12\frac{1}{2}$	1.065
$5\frac{1}{2}$ to 6	1.034	$12\frac{1}{2}$ to 13	1.093
6 to $6\frac{1}{2}$	1.023	13 to $13\frac{1}{2}$	1.096
$6\frac{1}{2}$ to 7	1.014	$13\frac{1}{2}$ to 14	1.110
7 to $7\frac{1}{2}$	1.008	14 to $14\frac{1}{2}$	1.127
$7\frac{1}{2}$ to 8	1.004	$14\frac{1}{2}$ to 15	1.147
8 to $8\frac{1}{2}$	1.000	15 to $15\frac{1}{2}$	1.164

*Ratio of average production at 8 years to average production at other ages.

A COMPARISON STUDY OF THE MATURE EQUIVALENT BUTTERFAT
PRODUCTION OF THE DAUGHTERS OF JERSEY SIRES.

Legend: (M. of M.), Medal of Merit; (G), Gold Medal; (S), Silver Medal

Rank	Name	Registry number	Year of birth	No. of daughters	Av. yearly production of the daughters. Fat—lbs.
1	St. Mawes Lad (G)-----	130501	1914	12	856.32
2	Fauvic's Prince (M. of M.)-----	107961	1912	23	783.73
3	Hillside Torono (G)-----	101792	1911	23	710.95
4	Valentine's Ashburn Baronet (G)-----	100044	1911	22	708.80
5	Pogis 99th of Hood Farm 21st-----	133582	1914	10	707.07
6	Hood's Sophie's Tormentor (S)-----	145709	1915	11	706.80
7	St. Mawes of Ashburn (S)-----	115996	1913	19	696.59
8	Sayda's King of Meridale (S)-----	121724	1914	20	694.89
9	Holger (M. of M.)-----	109744	1910	25	693.20
10	St. Mawes Golden Poppy (S)-----	125510	1913	16	689.90
11	Pogis 99th of Hood Farm (S)-----	94502	1909	101	664.01
12	Spermfield Prince Interest (S)-----	95697	1910	40	660.42
13	Daisy's Golden Poppy (S)-----	143372	1915	11	655.75
14	Sibley's Choice (S)-----	83040	1907	18	647.84
15	Matilda's Interested Owl (S)-----	121648	1913	11	645.22
16	Meridale Prince Darling (S)-----	135643	1914	22	645.13
17	Morocco's Pioneer (S)-----	105679	1911	24	644.77
18	Gamboge's Prince (S)-----	105565	1911	17	642.60
19	Pogis 95th of Hood Farm-----	92626	1909	25	640.90
20	St. Mawes (G)-----	72053	1904	20	636.64
21	Hood Farm Torono (S)-----	60326	1900	72	633.55
22	Rinda Lad of S. B. (G)-----	89518	1909	44	631.77
23	Heir of Crystal Spring (S)-----	136987	1914	14	631.77
24	Hood Farm Toronto 35th (S)-----	99265	1910	22	631.62
25	Noble Sensational Lad-----	118536	1913	14	626.31
26	Rosaire's Olga Lad (S)-----	87498	1909	49	624.57
27	Sophie's 19th Tormentor (S)-----	113302	1913	63	619.20
28	Rosebud's Fern Lad-----	70045	1904	10	614.74
29	Sophie's Torono-----	110518	1911	15	612.28
30	Pogis 75th of H. F.-----	94501	1909	20	612.12
31	Financial Beauty's King-----	132904	1915	11	610.51
32	Golden Fern's Noble Junior-----	103746	1912	10	608.01
33	Silver Chimes of S. B. (S)-----	96021	1910	32	606.33
34	Poppy's St. Mawes Prince-----	126055	1911	11	605.64
35	Eminent's Pilot (G)-----	75364	1906	20	605.13
36	Winnie Pedro's King-----	72947	1905	12	604.50
37	Financial Count-----	61316	1900	11	603.30
38	The Jap's Owl (S)-----	138146	1914	11	603.12
39	Sybil's Gamboge-----	174663	1914	23	601.81
40	Poppy's St. Mawes-----	115434	1911	20	600.32
41	Galway Fern Rieter-----	98284	1911	13	595.93
42	Spermfield Owl 2nd-----	93634	1909	25	596.46
43	Sophie's Emblem (S)-----	135038	1915	12	593.35
44	Meridale Oxford Owl-----	118444	1913	13	592.13
45	Majesty's Star-----	104594	1911	17	592.12
46	Oxford You'll Do Jr-----	102269	1910	11	589.10
47	Sophie's Gilsland Tormentor-----	123534	1914	11	587.05
48	Adelaide's Sultan (S)-----	123005	1912	14	585.64
49	Imported Ramsgate Champion-----	93534	1908	12	585.37
50	Compounded Interested Prince Owl (S)-----	137849	1914	11	583.43

Rank	Name	Registry number	Year of birth	No. of daughters	Av. yearly production of the daughters. Fat—lbs.
51	Golden Glow's Chief (G)-----	61460	1901	40	581.13
52	Leo of Smith Farm.-----	80490	1907	11	580.87
53	The Owl's Double Grandson-----	80314	1907	10	579.87
54	Sultana's Virginia Lad-----	82703	1907	25	579.14
55	Raleigh's Torono (S)-----	108456	1910	23	578.81
56	Count's Foxy Lad of Waikiki-----	142808	1915	10	578.66
57	Rowena's Interested Fern-----	72009	1905	16	578.49
58	Sultan of Rockland-----	121150	1913	16	578.26
59	Sans Aloï-----	81012	1907	18	578.02
60	Noble's Aristocratic Boy-----	101939	1911	14	576.08
61	Sophie's Premier (S)-----	111613	1912	25	574.54
62	The Imported Jap (G)-----	75265	1904	49	574.44
63	St. Mawes Noble (S)-----	132488	1914	15	573.56
64	Raleigh's Fairy Boy 9th (S)-----	113825	1913	15	572.60
65	Fancy's Pioneer, P. S.-----	3195	H. C.	10	572.25
66	Spermfield Owl (G)-----	57088	1899	49	570.87
67	Plymouth Lad's Majesty-----	91107	1910	18	568.78
68	Lou's Torono (S)-----	106614	1912	13	568.11
69	Oxford Daisy's Flying Fox-----	83284	1908	37	567.58
70	Shannon Raleigh-----	105825	1911	15	566.48
71	Royal Majesty (G)-----	79313	1903	45	566.37
72	Sibley's Interested Prince-----	108578	1911	13	566.12
73	Jacoba's Emanon-----	84177	1908	11	565.18
74	Noble Peer-----	90653	1909	10	564.91
75	Hood Farm Torono 20th-----	82854	1906	21	564.78
76	Pogis 99th of Hood Farm 7th-----	118462	1913	14	563.12
77	Ophelia's Challenger-----	120468	1913	15	559.65
78	Champion Torono's Son-----	104471	1910	16	558.89
79	Rockwood Laddie-----	82915	1908	13	557.78
80	Lady Letty's Victor-----	65020	1902	41	554.75
81	Marston's Interested Prince-----	71855	1905	10	554.30
82	Gertie's Stoke Pogis-----	56492	1899	15	553.72
83	Queen's Raleigh-----	88322	1909	34	550.92
84	Dolly's Champion Knight-----	119967	1913	27	550.83
85	Foxhall's Jubilee-----	76944	1905	25	549.59
86	Majesty's Oxford Fox-----	134214	1915	13	548.91
87	Noble's Faun Prince-----	95705	1910	12	548.82
88	Bonnetta's King-----	108980	1912	18	548.26
89	Gedney Farm Napoleon Oxford-----	93795	1908	12	548.07
90	Vermont Owl-----	110939	1911	24	547.50
91	Noble Duke of Oaklands-----	89682	1909	13	546.90
92	Sayda's Heir 3d-----	74817	1902	59	545.69
93	Chief Engineer-----	47148	1898	11	545.48
94	Fontaine's Chieftain-----	97158	1907	31	545.11
95	Sophie 19th's Tormentor 5th-----	144980	1916	13	544.91
96	Noble's Raleigh-----	82757	1908	15	544.00
97	Royal Majesty of St. Cloud-----	89541	1909	73	543.95
98	Interested Prince 2nd-----	95708	1910	31	543.77
99	Viola's Oxford Lad-----	89600	1910	12	543.51
100	Lorna's Altama's Interest-----	108420	1912	13	542.80
101	Gedney Farm Girl's Oxford (S)-----	75998	1907	39	542.79
102	Darling's Fancy Lad-----	134091	1914	10	542.46
103	Oxford Lad's Progress-----	92916	1909	10	542.09
104	The King of Cloverland-----	115137	1912	12	541.69
105	Financial King's Stockwell-----	106574	1911	18	541.15
106	Financial Fern Noble-----	113644	1912	15	541.01

Rank	Name	Registry number	Year of birth	No. of daughters	Av. yearly production of the daughters Fat—lbs.
107	Ella's Majesty Oxford	99911	1911	13	540.45
108	Queen's St. L. Rioter Boy	138159	1914	11	538.61
109	Fairy Glen's Raleigh	79438	1906	34	537.82
110	The Imported Cid	199361	1914	19	537.54
111	Marguerite's Premier	137370	1915	13	536.81
112	Imported Oxford Majesty	134090	1906	44	536.16
113	Eminent 19th	78620	1907	25	536.00
114	Interested Prince	58224	1899	46	535.28
115	Tonona Pogis	78657	1907	28	535.07
116	Le Gros	102789	1911	16	534.48
117	St. Omer's Torono	81219	1906	40	533.15
118	Foxhall's Champion	124108	1912	14	532.70
119	Financial Raleigh	86298	1907	12	531.36
120	Sultana's Jersey Lad	55391	1899	16	530.80
121	Glory's Noble	90655	1909	19	529.66
122	Golden Lucy's Eminent Lad	85639	1909	11	529.52
123	Gamboge Vellum's Majesty	123063	1913	11	529.42
124	Imp. Combination Premier	150715	1910	23	528.98
125	Flying Fox's Eminent	78568	1907	12	528.41
126	Stockwell's Fern Laddie	104236	1911	11	528.24
127	Sampson Exile	72702	1902	10	528.18
128	Irene's King Pogis (G)	73182	1905	62	527.71
129	Sayda's Oxford Owl	121234	1913	12	527.63
130	Majestic Fern	84428	1908	26	527.08
131	Village Knight	120791	1911	15	527.03
132	Owl of Belleview	106305	1911	16	526.43
133	G. G. Chief of Ashburn	86044	1909	17	525.69
134	Imp. Gamboge Royal Majesty	149864	1909	16	525.55
135	Raleigh's Fairy Boy	83767	1905	53	525.03
136	Keepsakes Golden Lad	71325	1904	14	524.90
137	Golden Lad of Summit	85396	1909	14	523.20
138	Raleigh's Fairy Boy 4th	101482	1911	19	522.68
139	Maplewood's Interested Owl	151916	1916	11	522.47
140	Rosaire's Fern Lad	98590	1910	13	521.92
141	The Plymouth Lad	89792	1905	15	521.75
142	Noble's Jolly Sultan	97181	1907	27	521.63
143	Sophie's Pogis	125595	1914	17	521.01
144	Pride's Olga 3d's King	83683	1908	17	520.27
145	Golden Tycoon	104240	1911	29	519.98
146	Interested Veda's Prince	122951	1913	19	517.75
147	Jacoba's Porterville King	125053	1913	13	517.25
148	Octavia's Duke	102270	1910	13	516.74
149	Viola's Foxy Eminent	90972	1909	12	516.27
150	Ev-Ken of Dover	112708	1913	12	516.15
151	Fontaine's Duke	61709	1901	11	516.15
152	Sans Peur of Sheomet	118282	1912	17	514.99
153	Golden Shylock	81862	1907	13	514.78
154	Imported Oxford You'll Do (G)	111860	1906	74	514.50
155	Financial Countess' Lad	86252	1908	24	514.25
156	Imported Champion Rower	167487	1908	12	513.90
157	Sayda's Heir	45360	1896	14	513.82
158	Oxford Duke O'Dreamwold	126888	1913	12	513.13
159	Golden Fern's Son	78687	1906	25	512.86
160	Golden Cicero	80272	1907	14	512.76
161	Fontaine's Raleigh	105374	1912	13	512.30
162	Empress' Lad of S. B.	77323	1906	11	511.26

Rank	Name	Registry number	Year of birth	No. of daughters	Av. yearly production of the daughters Fat—lbs.
163	Majesty's Western King	113111	1909	14	511.02
164	Mistletoe Pogis	75371	1906	10	510.44
165	Lime Ridge Lass 30th's Pogis	107192	1912	14	510.12
166	Saucon's Golden Prince	142483	1916	15	509.72
167	Hood Farm Pogis 9th	55552	1898	79	509.59
168	H. F. Golden Fern's Lad	80437	1907	16	509.40
169	Robert You'll Do	120790	1911	12	508.89
170	Karnak's Noble	87952	1908	28	508.17
171	Forfarshire's Noble Oxford	114886	1912	11	507.95
172	Nettina's Meridale Prince	114174	1912	19	507.85
173	Merry Maiden's Prince	71597	1905	16	507.51
174	Eminent's Raleigh	69011	1901	27	507.34
175	Torono	25204	1890	17	506.60
176	Imported Golden Fern's Noble (G)	145762	1909	57	506.52
177	Mona Rose's Glory	92531	1909	14	506.37
178	Hood Farm Torono 11th	78757	1907	14	506.12
179	Finance Remus	104413	1910	11	505.86
180	Sensational Fern	75924	1906	24	505.60
181	Oxfordshire	63548	1902	12	505.25
182	Gamboge's Knight	95698	1903	52	505.15
183	Rioter's Jersey Lad	58001	1898	24	503.52
184	Gertrude's Jap	93947	1908	16	502.85
185	St. Lambert of Winona	79567	1907	12	502.27
186	Idle Hour Blue Belle Prince	72292	1905	39	501.95
187	Cicero of S. B.	97904	1911	19	501.91
188	You'll Do Oxford	98772	1910	19	501.74
189	Roycroft Eminent	103231	1911	16	501.55
190	Hawthorne's Prince	104887	1912	11	501.28
191	Rose's King Banner	75839	1906	10	501.10
192	Viola's Golden Prince	111186	1912	26	500.83
193	Jacoba's Premier	89296	1909	14	500.82
194	Marigold's Exile King	63232	1901	14	500.72
195	Mon Plaisir's Majesty of F.	126484	1913	10	500.35
196	The Owl's Oxford Prince	95699	1905	15	499.68
197	Hood Farm Figgis Torono	90517	1909	23	499.27
198	Imp. Hauteville Fairy Boy	90952	1909	26	498.55
199	Fontaine's King	65641	1903	11	497.78
200	Financial King's Eminent	94592	1910	27	497.70
201	King Melia Ann of Albany	96033	1909	17	497.57
202	Gamboge's Oxford Lad	67284	1903	25	497.55
203	Maud's Melia Rioter	75751	1906	18	497.21
204	Eminent Fern King	110649	1912	10	497.04
205	Benedictine King	86100	1909	22	496.39
206	King Melia Ann of Darby	102375	1911	11	496.30
207	Imported Golden Maid's Prince	93538	1900	42	495.60
208	Fanny's Oxford Majesty	91781	1909	17	495.51
209	Golden Spark of Montpelier	84576	1908	11	495.27
210	Sans Aloï Niece's King	146291	1915	12	495.08
211	Imported Fern's Oxford Noble	160983	1912	20	494.97
212	Captain Hugo	72410	1905	11	494.86
213	Buttercup's Golden Lad	124256	1913	14	494.53
214	Premier of Fairview	116508	1912	14	494.45
215	Eminent of St. Martin	73207	1906	18	494.65
216	Viola's Bright Prince	97182	1907	10	494.23
217	Fern's Lad of St. Martin	80126	1906	10	493.89
218	Davis Majestic	122896	1914	10	493.81

10 MISSOURI AGRICULTURAL EXPERIMENT STATION BULLETIN 206

Rank	Name	Registry number	Year of birth	No. of daughters	Av. yearly production of the daughters Fat—lbs.
219	Sir Oxford Majesty.....	105869	1912	13	493.81
220	Forfarshire's King Dalton.....	95339	1908	13	493.30
221	Blossom's Foxhall.....	82038	1908	10	493.71
222	Astor's Fairy Boy.....	113670	1913	12	493.63
223	Owl's Oxford Interest.....	121457	1913	11	493.08
224	Torono of Bath.....	115553	1912	14	492.73
225	Altama Interest.....	98466	1910	19	491.34
226	Hebron Victor.....	80100	1905	17	491.33
227	Combination of St. Savior.....	88245	1904	15	491.08
228	Pogis of Galiad.....	84397	1908	11	490.07
229	Pogis 99th of Hood Farm.....	90493	1910	16	489.72
230	Loretta's King.....	65050	1902	59	488.66
231	Golden Fern of Linden.....	84011	1907	12	488.55
232	Flying Fox's Victor.....	64768	1902	20	488.19
233	Oonan's 23'ds Grandson.....	74887	1906	14	486.63
234	Fontaine's Gamboge Knight.....	96186	1910	11	485.42
235	Golden Lily's Majesty.....	119596	1912	12	485.50
236	Oxford Handsome Prince.....	83338	1908	12	484.25
237	Prince of River Ridge.....	128249	1914	25	482.13
238	Mabel's Raleigh.....	77913	1907	13	481.93
239	Dulect's Majesty.....	98230	1911	21	481.82
240	Mabel's Raleigh P. S.....	3722	H. C.	17	481.64
241	Ixia's Noble Raleigh.....	102596	1911	13	480.94
242	Fairview Jap.....	134386	1914	11	480.69
243	Mona's Handsome Stockwell.....	90390	1909	14	480.57
244	Nobleman of St. Cloud.....	76091	1907	17	480.42
245	Gertie's Son's Boy.....	71825	1905	12	480.39
246	Mabel's Poet.....	65780	1899	15	480.16
247	Tom You'll Do.....	113062	1913	19	479.43
248	Ixia's Fancy Sultan.....	126788	1914	15	479.07
249	Karnak's Jap.....	84363	1908	11	479.06
250	Eminent 25th.....	83638	1907	16	478.25
251	Benedictine's Plymouth Lad.....	91106	1910	10	478.13
252	Latoma's Golden Topper.....	84170	1908	10	478.09
253	Golden Maid's Prince.....	94944	1910	10	477.88
254	Interested Prince's Owl.....	98117	1911	17	477.46
255	Lady Letty's Eminent.....	82309	1908	38	477.40
256	Lucy's Prince P. S.....	3939	H. C.	10	477.33
257	Sultana's Oxford Lad.....	76506	1907	10	476.78
258	Martha Bluebell's Odello.....	102298	1910	16	476.22
259	Lulu's Ashburn Chief.....	126214	1914	10	475.78
260	Hazel Fern Golden King.....	77872	1907	10	475.77
261	Tormentor of Kawkawlin.....	42880	1894	16	475.31
262	Viola's Golden Jolly.....	79314	1904	16	474.95
263	Master Fox.....	80051	1908	12	474.18
264	Fontaine's Caiest.....	81118	1907	16	473.54
265	Theda's Duke of Portage.....	41762	1894	10	473.13
266	Prince Jonquil.....	85334	1908	11	472.78
267	Jessie's Fairy Lad.....	112740	1912	15	472.36
268	Prince Mel Figgis.....	75071	1906	10	471.59
269	Skamokawa Chief.....	124964	1913	18	471.37
270	Illahee Stoke Pogis.....	97031	1910	10	471.24
271	Champion of St. Cloud.....	70566	1904	11	471.18
272	Noble's Oxford Sultan.....	106403	1911	17	470.91
273	Belvedere's Gamboge Majesty.....	97440	1909	12	470.55
274	Eminent.....	69631	1897	33	470.15

Rank	Name	Registry number	Year of birth	No. of daughters	Av. yearly production of the daughters. Fat—lbs.
275	Gedney Farm Oxford Lad.....	71238	1900	24	470.15
276	Imp. Cowslip's Golden Noble.....	120789	1909	23	468.79
277	Oakwood D's Fox.....	126834	1913	17	468.78
278	Marigold's Jap.....	100085	1910	12	468.65
279	The Owl of Meridale.....	85853	1907	14	467.49
280	Mona's Eminent.....	84618	1908	12	467.24
281	Plymouth Hallow'en Fox.....	102320	1911	12	463.56
282	Jubilee of Bois D'Arc.....	29041	1891	12	463.38
283	Springvale Stoke Pogis.....	54779	1898	11	461.80
284	Lady Letty 4th's Rioter.....	76533	1906	10	461.27
285	Blue Belle's Owl.....	79641	1906	13	461.03
286	Oxford Lad's Owl of D. H.....	147267	1916	13	460.30
287	Golden Fern's Finance.....	104014	1912	10	459.76
288	Sultana's Golden Jolly.....	86180	1908	19	459.17
289	Majesty's Wonder.....	90717	1909	14	458.42
290	Stockwell's Trinity Prince.....	79317	1906	17	457.42
291	Gertie's Son's Victor.....	123159	1912	23	456.63
292	Eminent's Sensational King.....	107123	1911	11	456.09
293	Raleigh's Plymouth Noble.....	104107	1911	11	455.13
294	Hector Marigold.....	59121	1900	34	455.02
295	Meridale Interested Duke.....	111310	1911	13	453.56
296	Fairy's Noble Boy.....	93378	1910	10	453.22
297	Baronetti's Golden Lad.....	67908	1904	13	452.98
298	Oxford He'll Do.....	97973	1910	10	452.74
299	Derry's Golden Jolly.....	82807	1902	13	452.55
300	Diploma's Bijou Boy.....	86292	1908	10	452.47
301	Sultana's Fawn Prince.....	90064	1909	10	452.13
302	Rioter B. K. Helma.....	66053	1902	11	451.84
303	Topsy's Fontaine's Prince.....	95704	1910	10	451.43
304	Imp. King of Hambie.....	65298	1901	18	451.37
305	Leda's King.....	96707	1911	14	449.95
306	Loretta's King of Friendship.....	76500	1906	10	449.19
307	Hood Farm Torono 21st.....	83413	1908	14	448.57
308	Imported Stockwell.....	75264	1903	12	447.50
309	Island Lodestar.....	67638	1904	11	447.14
310	Sultan of Oaklands.....	78475	1904	22	447.11
311	Lookout Prince.....	115074	1913	24	446.53
312	Noble Sultan.....	106673	1911	12	446.43
313	Brown Lassie's Compass.....	71626	1905	16	445.44
314	Eminent 2nd's Fox.....	74177	1905	17	445.00
315	Eminent 6th.....	75752	1906	16	444.37
316	Violet's Oakland Count.....	80974	1908	12	444.37
317	Raleigh's Noble.....	90478	1910	13	444.15
318	Golden Fern's Pilot.....	73492	1905	10	443.92
319	Noble of Oaklands.....	95700	1905	42	443.16
320	Lookout Torono.....	78593	1906	31	442.74
321	Valentine's Onan.....	58076	1899	20	442.53
322	Royal Majesty of Sunshine.....	143784	1916	19	442.51
323	Golden Fern of Alden.....	114321	1911	11	440.44
324	King Sappho King.....	65262	1902	25	441.07
325	Ibsen's Glory.....	92986	1910	11	440.31
326	Togo's Noble Lord.....	96421	1910	13	438.52
327	Naiad's Golden Lad.....	67475	1903	11	436.82
328	Model's Oxford Lad.....	66518	1903	11	436.57
329	Eurybia's Son.....	68790	1904	14	435.52
330	Fontaine's Lodestar.....	77305	1907	10	435.26

12 MISSOURI AGRICULTURAL EXPERIMENT STATION BULLETIN 206

Rank	Name	Registry number	Year of birth	No. of daughters	Av. yearly production of the daughters Fat—lbs.
331	King Fox.....	64667	1902	17	434.73
332	Foxy's Brown Poet.....	82982	1907	16	434.03
333	Champion Torono's Son 11th.....	136233	1914	12	433.87
334	Loretta's D's Champion's Son.....	77002	1906	16	433.00
335	Minaret Exile.....	56933	1898	11	432.88
336	Golden Jolly's Masterpiece.....	86295	1905	18	432.26
337	The Warden.....	77015	1907	34	430.34
338	Prides Olga Rosaire's Son.....	84768	1907	17	430.31
339	Scott's Champion.....	105387	1911	11	430.17
340	Pretty Maid's Figgis's Fox O'D.....	89351	1909	15	427.91
341	Aldam's Noble.....	89581	1909	10	427.91
342	Fox's Johnnie O'Dreamwold.....	68143	1903	13	426.10
343	Le Cotil's Raleigh.....	120688	1912	14	424.57
344	Biltmore's Torment.....	60761	1900	12	421.94
345	Lad's Pogis of Hickory Lawn.....	108050	1912	14	421.81
346	Oonan Count.....	57470	1899	19	420.28
347	Fillmore's Foxglove.....	78878	1906	11	418.40
348	Fancy's Red Flag.....	87222	1909	13	416.93
349	Bermuda's Eminent.....	93798	1910	14	414.21
350	Mr. Inez Marigold Pedro.....	79701	1907	16	413.44
351	Valentine's Count.....	69878	1904	17	408.93
352	Morny Cannon's Bright Prince.....	107441	1910	12	403.17
353	Jubilee's Foxhall.....	82299	1908	10	396.73
354	Eminent 10th.....	75753	1906	13	385.29