



Integrated Pest Management

MISSOURI WEED SEEDS

Plant Protection Programs

*College of Agriculture, Food
and Natural Resources*

exclusive version — see
extension-missouri.edu

Published by MU Extension, University of Missouri-Columbia

\$5.00

IPM1023

This publication is part of a series of IPM Manuals prepared by the Plant Protection Programs of the University of Missouri. Topics covered in the series include an introduction to scouting, weed identification and management, plant diseases, and insects of field and horticultural crops. These IPM Manuals are available from MU Extension at the following address:

**Extension Publications
2800 Maguire Blvd.
Columbia, MO 65211
1-800-292-0969**

Authors

Fred Fishel
Department of Agronomy
University of Missouri-Columbia

Kevin Bradley
Department of Agronomy
University of Missouri-Columbia

On the World Wide Web

For this and other Integrated Pest Management publications on the World Wide Web, visit <http://ipm.missouri.edu>.

Production

MU Extension and Agricultural Information
Tammy McNiel, editor
Dennis Murphy, illustrator

CONTENTS

Broadleaf plant families.	4
Common name index - Broadleaf plant families.	16
Grass and grasslike plant families.	17
Common name index - Grass and grasslike plant families.	19



A PHOTO COMPENDIUM OF MISSOURI WEED SEEDS

Positive identification of pests, including weeds, is the first step in a sound integrated pest management program. Knowledge of plant morphological features, such as leaf and stem shape, flower type and color, and the presence of hairs make identification relatively easy compared with relying on seed physical characteristics. On occasion, the agricultural producer and other professionals will be challenged to identify a weed by the features of its seed. This can be a daunting task because of the relatively small size of seed, the change in surface characteristics caused by various processes and subtle color variation within even the same species.

The purpose of this publication is to assist those who attempt to identify weeds by their seed characteristics. This guide is intended not only for agricultural professionals, but also those who are hobbyists, such as FFA members. A hand or pocket lens with a magnification power of 10x will be especially helpful in using this guide. For an idea of relative seed size, each photograph contains a millimeter

ruler. The distance between increments on the scale is 1 mm. Compare your sample with the color images in this guide to assist in your identification. Seed photographs are grouped by their plant taxonomic family for both broadleaf and grass or grasslike weeds. You may also refer to the indexes of common names -- broadleaf plant families on page 16 and grass and grasslike plant families on page 19.

Local University of Missouri Extension Centers can provide information to assist you in pest identification and control decisions. They can help you submit samples to MU's Extension Plant Diagnostic Clinic for positive identification. For specific weed control information in agronomic crop settings, MU publication MP 575, *Weed Control Guide for Missouri Field Crops*, may be purchased through the local centers. For weed control in turfgrass areas, refer to MU publication IPM 1009, *Turfgrass and Weeds*. To order these or any other MU Extension publication, call 1-800-292-0969 or go online at <http://muextension.missouri.edu/>.

Broadleaf plant families

Aizoaceae
(Carpetweed family)

Aizoaceae (Carpetweed family)

This is a small family of plants. Other than carpetweed, only two species of plants in this family are known to occur in relatively isolated locations in Missouri.



Carpetweed
Mollugo verticillata

Anacardiaceae (Cashew family)

In addition to several sumac species, poison ivy is a member of this family and is widespread throughout the state.

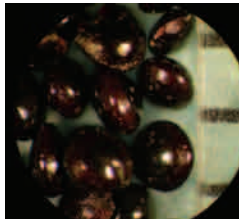


Sumac, smooth; *Rhus glabra*

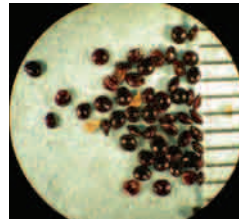


Amaranthaceae (Amaranth family)

In Missouri the *amaranths* (pigweeds) make up the vast majority of plant genera that occur within this family.



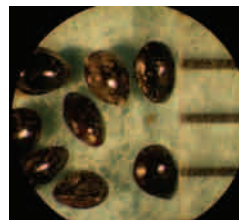
Amaranth, Palmer
Amaranthus palmerii



Pigweed, smooth
Amaranthus hybridus



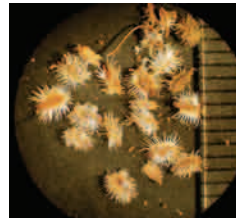
Pigweed, tumble
Amaranthus albus



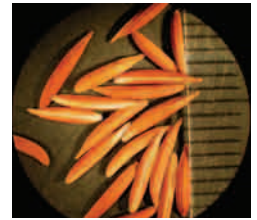
Pigweed, redroot
Amaranthus retroflexus

Apiaceae (Carron family)

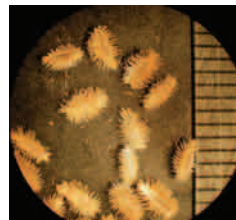
Also known as the parsley family, this large family includes several herbal plants such as caraway, dill and fennel. It also contains several toxic plants such as poison hemlock and water hemlock.



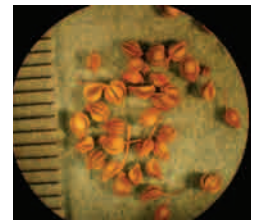
Carrot, wild
Daucus carota



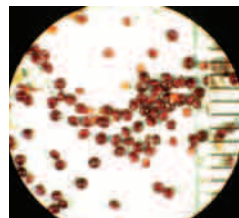
Chervil, wild
Anthriscus sylvestris



Hedgeparsley, Japanese
Torilis japonica



Laceflower
Ptilimnium nuttallii



Waterhemp, common
Amaranthus rudis



Poison-hemlock
Conium maculatum

Apiaceae
(Carron family)

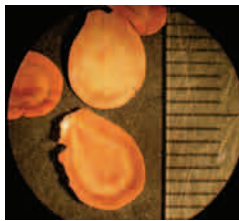
Apocynaceae
(Dogbane family)

Broadleaf plant families

Asteraceae
(Aster family)

**Apocynaceae
(Dogbane family)**

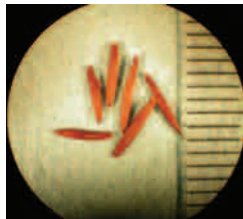
The Dogbane family has relatively few members that occur in Missouri.



Milkweed, green
Asclepias hirtella



Milkweed, honeyvine
Ampelamus albidus

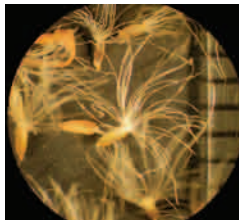


Dogbane, hemp; *Apocynum cannabinum*

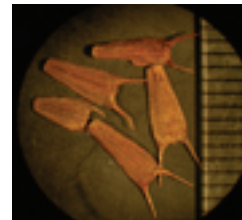


**Asteraceae
(Aster family)**

The aster family is the largest and most diverse family of broadleaf plants in Missouri. Its members include various species of goldenrod, sunflower and thistle.



Aster, white heath
Aster pilosus



Beggarticks, bearded
Bidens aristosa

**Araceae
(Arum family)**

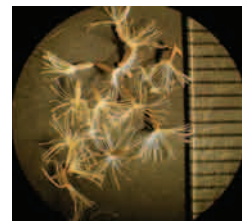
The two most prevalent members of the arum family are jack-in-the-pulpit and the closely related green dragon, both found throughout the state.



Jack-in-the-pulpit
Arisaema atrorubens



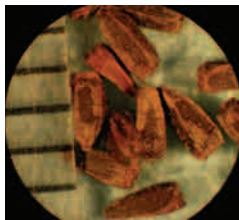
Boneset, false
Kuhnia eupatorioides



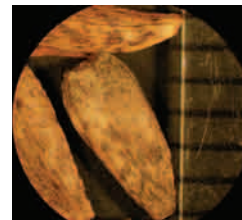
Boneset, late
Eupatorium serotinum

**Asclepiadaceae
(Milkweed family)**

All members of this plant family are known as milkweeds. There are at least 15 species of milkweeds that occur in the state.



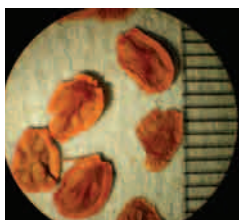
Burnweed, American
Rudbeckia triloba



Burdock, common
Arctium minus



Milkweed, common
Asclepias syriaca



Milkweed, eastern whorled
Asclepias verticillata



Burnweed, American
Erechtites hieraciifolia



Chicory
Cichorium intybus

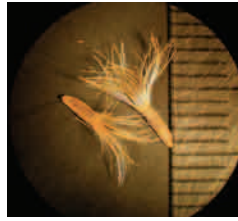
Asteraceae
(Aster family)

... continued

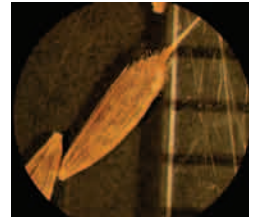
Broadleaf plant families

Asclepiadaceae
(Milkweed family)

continued



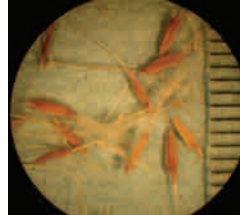
Ironweed, western
Vernonia baldwinii



Lettuce, prickly
Lactuca serriola



Cocklebur, common
Xanthium strumarium



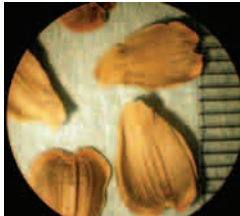
Dandelion
Taraxacum officinale



Lettuce, tall
Lactuca canadensis



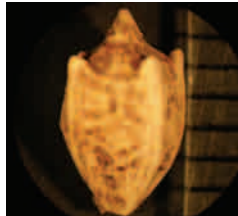
Ragweed, common
Ambrosia artemisiifolia



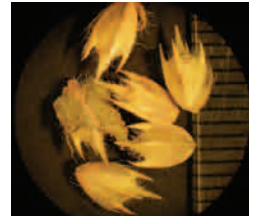
Dock, prairie
Silphium terebinthinaceum



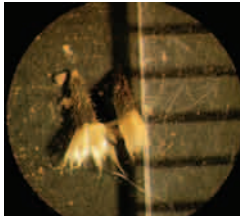
Eclipta
Eclipta prostrata



Ragweed, giant
Ambrosia trifida



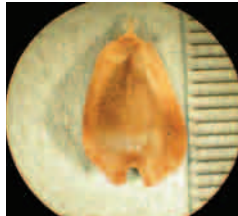
Ragweed, lanceleaf
Ambrosia bidentata



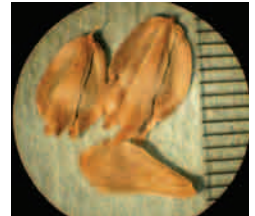
Galinsoga, hairy
Galinsoga ciliata



Goldenrod, Canada
Solidago canadensis



Rosinweed, cup
Silphium perfoliatum



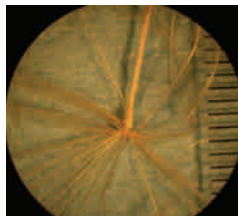
Rosinweed, wholeleaf
Silphium integrifolium



Goldenrod, tall
Solidago altissima



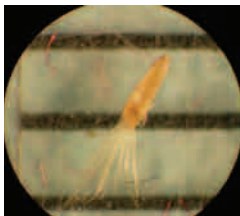
Groundsel, common
Senecio vulgaris



Salsify, western
Tragopogon dubius



Snakeroot, white
Eupatorium rugosum



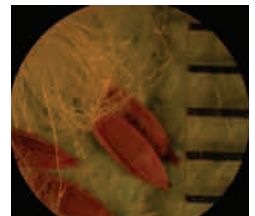
Horseweed
Conyza canadensis



Ironweed, tall
Vernonia altissima



Sowthistle, annual
Sonchus oleraceus



Sowthistle, spiny
Sonchus asper

Asteraceae
(Aster family)

... continued

Broadleaf plant families

Brassicaceae
(Mustard family)



Spanishneedles
Bidens bipinnata



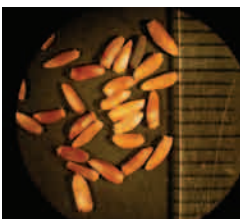
Sunflower, common
Helianthus annuus

Boraginaceae (Borage family)

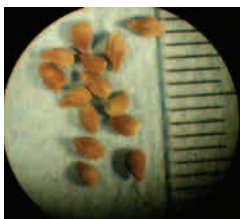
This family of plants also includes several nuisance plants known as "beggar's lice" because their fruits readily attach to clothing and other articles.



Thistle, bull
Cirsium vulgare



Thistle, Canada
Cirsium arvense



Gromwell, corn; *Lithospermum arvense*



Thistle, field
Cirsium discolor



Thistle, musk
Carduus nutans

Brassicaceae (Mustard family)

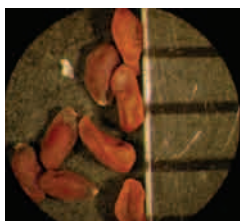
The mustard family is one of the larger groups of plants in the state. Several plants within this family, such as yellow rocket and wild mustard, are common throughout Missouri.



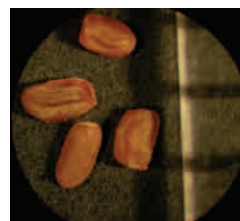
Thistle, Scotch
Onopordum acanthium



Thistle, tall
Cirsium altissimum



Falseflax, smallseed
Camelina microcarpa



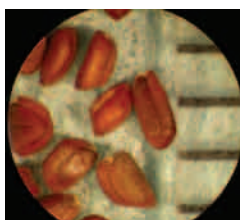
Flixweed
Descurainia sophia

Bignoniaceae (Trumpet creeper family)

Besides trumpet creeper, there are few species of *catalpa* that are present in this family within Missouri.



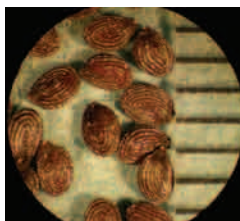
Trumpet creeper
Campsis radicans



Mustard, hedge
Sisymbrium officinale



Mustard, wild
Brassica kaber



Pennycress, field
Thlaspi arvense



Pepperweed, Virginia
Lepidium virginicum

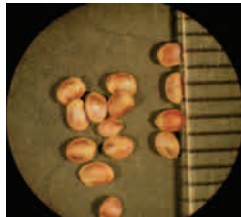
Broadleaf plant families

Dipsacaceae
(Mustard family)
... continued

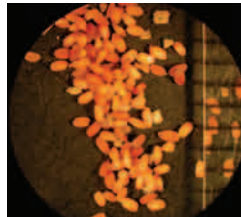
Caryophyllaceae
(Pink family)

Brassicaceae (Mustard family)

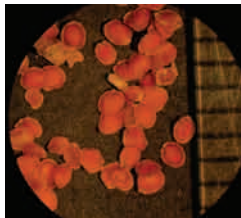
continued



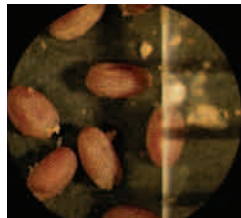
Rocket, yellow
Barbarea vulgaris



Shepherd's-purse
Capsella bursa-pastoris



Sibara
Sibara virginica



Tansymustard, green
Descurainia pinnata ssp.
brachycarpa

Cannabaceae (Mulberry family)

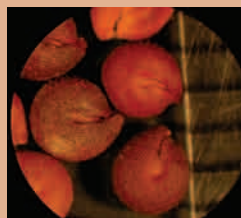
Other than hops, this family includes mulberry, Osage orange and hemp.



Hops, Japanese
Humulus japonicus

Capparidaceae (Caper family)

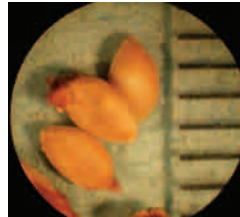
This small family of plants has only a few members that occur in Missouri such as spider flower.



Clammyweed, roughseed
Polanisia dodecandra

Caprifoliaceae (Honeysuckle family)

This family includes several species of honeysuckle, viburnum and elderberry.



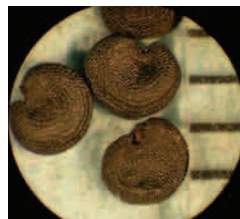
Buckbrush
Symphoricarpos orbiculatus



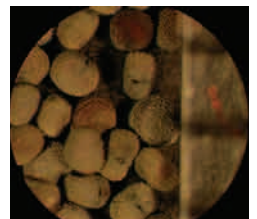
Feverwort
Triosteum perfoliatum

Caryophyllaceae (Pink family)

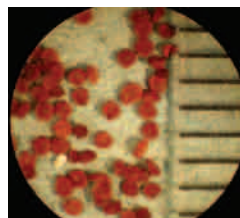
At least 14 species of "chickweed" and several species of sleepy catchfly make up the majority of this family in Missouri.



Bouncingbet
Saponaria officinalis



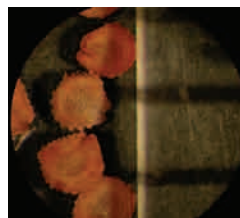
Catchfly, sleepy
Silene antirrhina



Chickweed, common
Stellaria media



Chickweed, mouseear
Cerastium vulgatum



Chickweed, nodding
Cerastium nutans

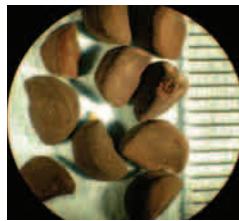
Chenopodiaceae
(Goosefoot family)

Broadleaf plant families

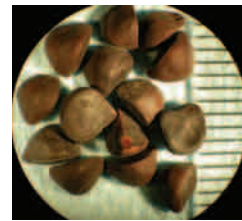
Dipsacaceae
(Teasel family)

**Chenopodiaceae
(Goosefoot family)**

At least 18 different *Chenopodium* genera members, also known as lambsquarters, are present in Missouri. *Kochia* is also another important member.



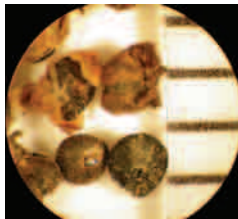
Morningglory, ivyleaf
Ipomoea hederacea



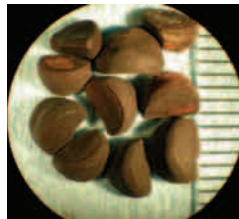
Morningglory, pitted
Ipomoea lacunosa



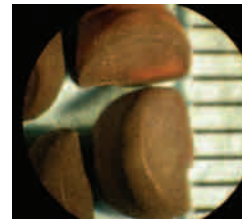
Kochia
Kochia scoparia



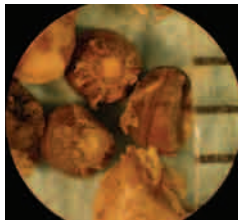
Lambsquarters, common
Chenopodium album



Morningglory, tall; *Ipomoea purpurea*



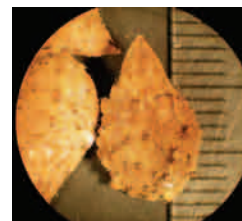
Povertyweed, Nuttall
Monolepis nuttalliana



Thistle, Russian
Salsola iberica

**Cucurbitaceae
(Gourd family)**

Cucurbits include cultivated plants, such as gourd, squash and cucumber.



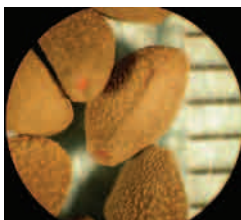
Burcucumber
Sicyos angulatus

**Convolvulaceae
(Morningglory family)**

Most of the members of this family are vining plants, including several common species of morningglories, bindweeds and the parasitic group of plants, dodders.

**Dipsacaceae
(Teasel family)**

The only two members of this family of plants that are known to occur in Missouri are cutleaf and common teasel.



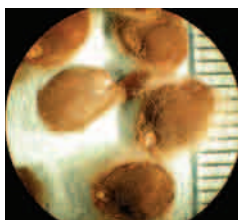
Bindweed, field
Convolvulus arvensis



Bindweed, hedge
Calystegia sepium



Dodder, field
Cuscuta campestris



Morningglory, bigroot
Ipomoea pandurata



Teasel, common
Dipsacus fullonum



Teasel, cutleaf
Dipsacus laciniatus

Broadleaf plant families

Euphorbiaceae
(Spurge family)

Euphorbiaceae (Spurge family)

Most of the plants from this family present in Missouri are spurges, which include about 20 different species.



Copperleaf, hophornbeam; *Acalypha ostryifolia*



Copperleaf, Virginia; *Acalypha virginica*



Croton, tropic
Croton glandulosus var.
septentrionalis



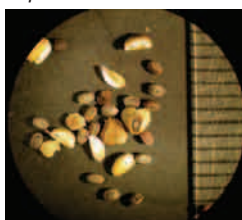
Croton, woolly
Croton capitatus



Spurge, nodding; *Euphorbia nutans*



Spurge, prostrate
Euphorbia humistrata

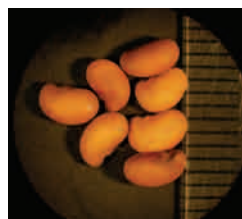


Spurge, toothed
Euphorbia dentata



Fabaceae (Pea family)

The legume family is one of the largest groups of broadleaf plants. Common members include clovers and various beans and peas.



Blue false indigo
Baptisia australis



Bundleflower, Illinois
Desmanthus illinoensis



Medic, black
Medicago lupulina



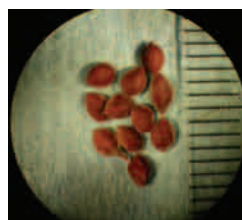
Partridgepea
Cassia fasciculata



Rattlebox
Crotalaria sagittalis



Senna, wild
Cassia marilandica



Sericea lespedeza
Lespedeza cuneata



Sesbania, hemp
Sesbania exaltata



Tick trefoil
Desmodium paniculatum



Geraniaceae
(Geranium family)

Broadleaf plant families

Malvaceae
(Mallow family)



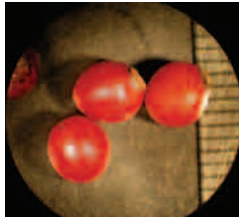
Wildindigo, long-bracted
Baptisia leucophaea



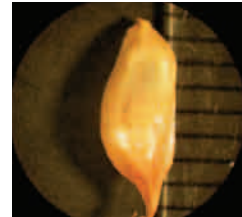
Wildindigo, white
Baptisia leucantha

Liliaceae
(Lily family)

Besides being considered weedy plants, several members of the lily family are commonly cultivated. Such members include asparagus, yucca and many cultivars of daylilies.



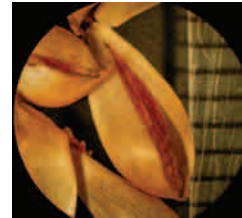
Catbriar
Smilax bona-nox



Garlic, wild
Allium vineale



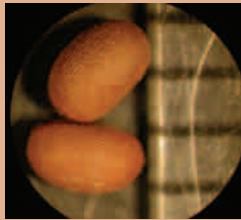
Greenbriar, bristly
Smilax hispida



Onion, wild
Allium canadense

Geraniaceae
(Geranium family)

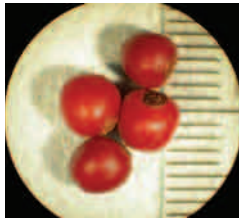
The majority of this family of plants present in Missouri are geraniums. There are at least five species known to occur in the state.



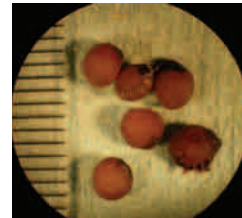
Carolina geranium
Geranium carolinianum

Lamiaceae
(Mint family)

Common members of the mint family not shown in this guide are henbit and purple deadnettle, which are two of the most prevalent winter annuals in Missouri.



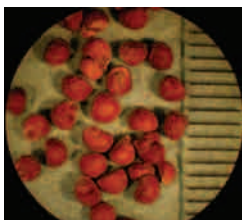
Smooth carrion flower
Smilax herbacea



Solomon's seal
Polygonatum biflorum

Malvaceae
(Mallow family)

Several species of the mallow family are among the most common broadleaf weeds in Missouri. These include velvetleaf and prickly sida. Cotton is also a member of this family.



Germander, American
Teucrium canadense



Gianthyssop, catnip
Agastache nepetoides



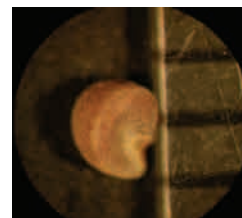
Healall
Prunella vulgaris



Mint, perilla
Perilla frutescens



Anoda, spurred
Anoda cristata



Mallow, common
Malva neglecta

Broadleaf plant families

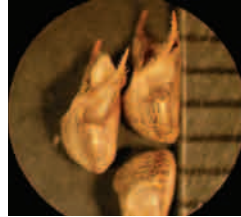
Malvaceae
(Mallow family)
....continued

Malvaceae (Mallow family)

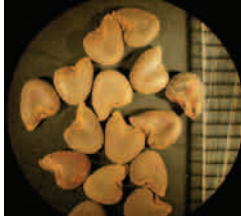
continued



Mallow, rose
Hibiscus lasiocarpus



Sida, prickly
Sida spinosa

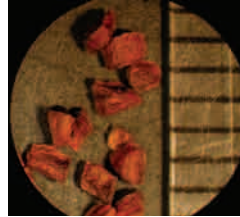


Velvetleaf; *Abutilon theophrasti*



Onagraceae (Evening primrose family)

Primrose is a common member of this family with approximately 14 different species present in Missouri.

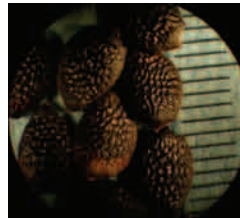


Eveningprimrose, common; *Oenothera biennis*



Passifloraceae (Passionflower family)

Although about 18 genera of the passion flower family are known, only one genus is known to be present in Missouri.

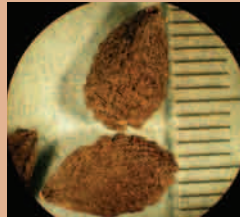


Passionflower, maypop; *Passiflora incarnata*



Martyniaceae (Unicorn-plant family)

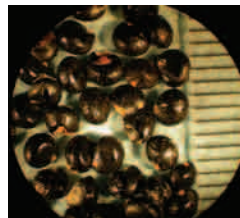
Devil's-claw, also known as unicorn plant, is the only known species of this family to be present in Missouri.



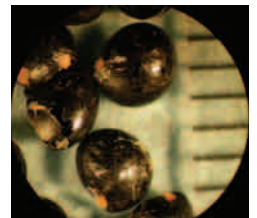
Devil's-claw
Proboscidea louisianica

Phytolaccaceae (Pokeweed family)

This relatively small plant family has only one genus occurring in Missouri, common pokeweed.



Pokeweed, common; *Phytolacca americana*



Menispermaceae (Moonseed family)

Although there are about 75 genera of the moonseed family, Missouri has only three known genera.



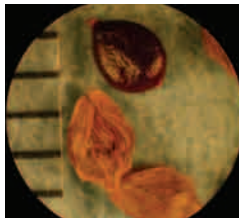
Moonseed, redberry
Cocculus carolinus

Phytolaccaceae
(Pokeweed family)

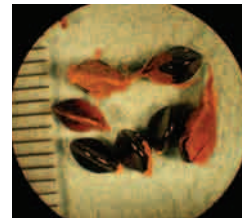
Plantaginaceae
(Plantain family)

**Plantaginaceae
(Plantain family)**

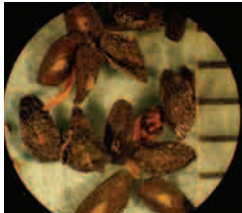
The group of plants known collectively as plantains has about 11 species in the state.



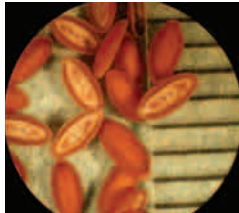
Ladysthumb
Polygonum persicaria



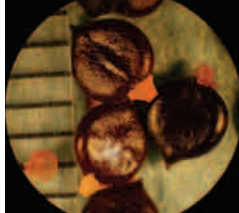
Smartweed, hedge
Polygonum scandens



Plantain, blackseed
Plantago rugelii



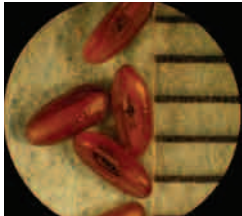
Plantain, bracted
Plantago aristata



Smartweed, Pennsylvania
Polygonum pennsylvanicum



Sorrel, red
Rumex acetosella



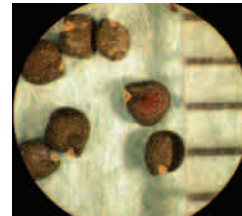
Plantain, buckhorn
Plantago lanceolata



Plantain, hoary
Plantago media

**Portulacaceae
(Purslane family)**

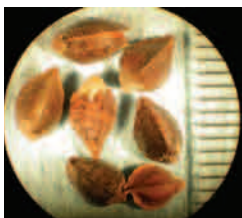
Of 20 genera known within this family, there are only three present in the state. Purslane is the most common among them.



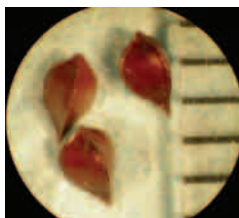
Purslane, common
Portulaca oleracea

**Polygonaceae
(Smartweed family)**

Many different species of plants in Missouri are known as smartweeds, some of which are among the state's most common weeds. Of about 30 genera of these plants worldwide, at least six are present in Missouri.



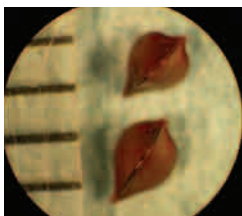
Buckwheat, wild
Polygonum convolvulus



Dock, broadleaf
Rumex obtusifolius

**Ranunculaceae
(Buttercup family)**

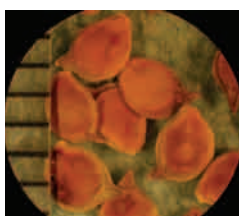
This rather large group of plants is best known for buttercups, of which there are nearly 20 species in Missouri. Clematis is another fairly common plant genus occurring in this family.



Dock, curly
Rumex crispus



Knotweed, prostrate
Polygonum aviculare



Buttercup, bulbous
Ranunculus bulbosus



Buttercup, smallflower
Ranunculus abortivus

Ranunculaceae
(Buttercup family)

Broadleaf plant families

Broadleaf plant families

Ranunculaceae
(Buttercup family)
....continued

Ranunculaceae (Buttercup family)

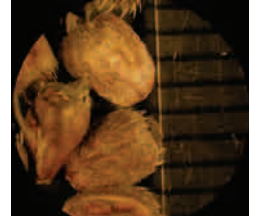
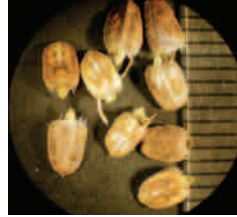
continued



Columbine
Aquilegia canadensis

Rubiaceae (Madder family)

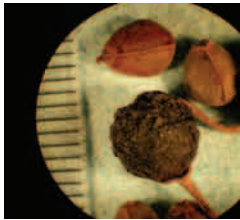
Although a large family of plants with about 600 genera, there are about eight genera present in Missouri. The genus, *Galium*, is the largest in this state with at least 11 species, including a common winter annual, catchweed bedstraw.



Poorjoe; *Diodia teres* (both photos)

Rhamnaceae (Buckthorn family)

The buckthorn family has three genera found in the state; *Rhamnus* spp. or buckthorn is the more common with three species.



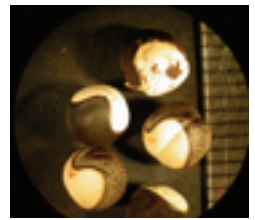
Buckthorn, Carolina
Rhamnus caroliniana



Buckthorn, lance-leaved
Rhamnus lanceolata

Sapindaceae (Soapberry family)

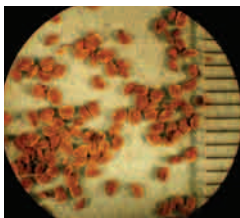
The soapberry family has only two genera present in the state and is not common, although there are about 140 members worldwide.



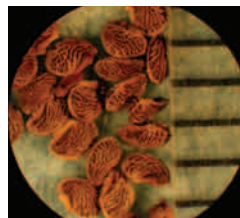
Balloonvine
Cardiospermum halicacabum

Rosaceae (Rose family)

Many of the members of this family are commonly grown as cultivated plants, including rose, apple, pear and strawberry. A notorious member, multiflora rose, is one of the state's noxious weeds.

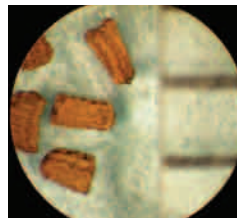


Cinquefoil, sulfur; *Potentilla recta*

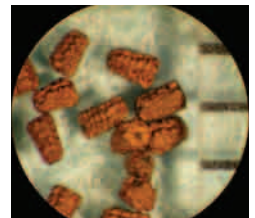


Scrophulariaceae (Figwort family)

Of the nearly 280 genera, at least 25 are known to be in Missouri. The genera that contain mullein and speedwell are among the most common.



Mullein, common
Verbascum thapsus



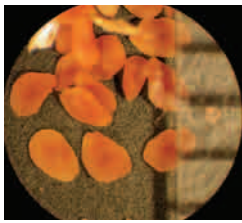
Mullein, moth
Verbascum blattaria

Scrophulariaceae
(Figwort family)

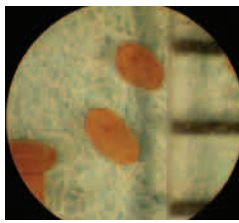
Scrophulariaceae
(Figwort family)
....continued

Broadleaf plant families

Vitaceae
(Grape family)



Speedwell, corn
Veronica arvensis



Speedwell, purslane
Veronica peregrina

Urticaceae
(Nettle family)

This relatively small family of plants has only five genera occurring in Missouri, but one of its members, *Laportea canadensis* or wood nettle, is a common nuisance plant because of its stinging hairs.

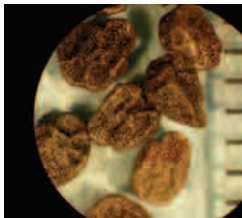


Pellitory; *Parietaria pensylvanica*



Solanaceae
(Nightshade family)

Some of the state's most prevalent weed problems are caused by this family's members, such as various species of nightshade. Other members are commonly cultivated such as tomato, pepper, potato and eggplant.



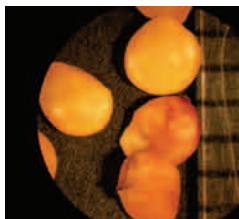
Buffalobur
Solanum rostratum



Groundcherry, clammy
Physalis heterophylla



Groundcherry, smooth
Physalis subglabrata



Horsenettle
Solanum carolinense

Verbenaceae
(Vervain family)

Of about 90 known genera, only three occur in the state. Most prevalent are the vervains, with seven species, most commonly encountered throughout Missouri.



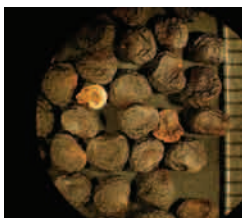
Vervain, blue
Verbena hastata



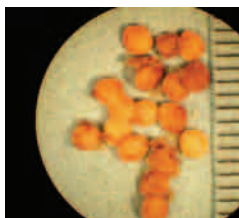
Vervain, hoary
Verbena stricta

Vitaceae
(Grape family)

Several species of the grape family are commercially valuable to the state's economy. Virginia creeper is one of the most common vining weeds encountered in undisturbed habitats.



Jimsonweed
Datura stramonium



Nightshade, bittersweet
Solanum dulcamara



Nightshade, eastern black
Solanum ptycanthum



Raccoon grape
Ampelopsis cordata



Virginia-creeper;
Parthenocissus quinquefolia

Zygophyllaceae
(Caltrop family)

**Zygophyllaceae
(Caltrop family)**

This relatively small plant family has about 30 members, but only two actually occur in Missouri. Of these two, puncturevine is the more common.



Puncturevine
Tribulus terrestris

Broadleaf plant families

Common name index- Broadleaf plant families

- | | | | |
|-----------------------------|-----------------------------|-------------------------------|------------------------------|
| Amaranth, Palmer, 4 | Devil's-claw, 12 | Milkweed, eastern whorled, 5 | Salsify, western, 6 |
| Anoda, spurred, 11 | Dock, broadleaf, 13 | Milkweed, green, 5 | Senna, wild, 10 |
| Aster, white heath, 5 | Dock, curly, 13 | Milkweed, honeyvine, 5 | Sericea lespedeza, 10 |
| Balloonvine, 14 | Dock, prairie, 6 | Mint, perilla, 11 | Sesbania, hemp, 10 |
| Beggarticks, bearded, 5 | Dodder, field, 9 | Moonseed, redberry, 12 | Shepherd's-purse, 8 |
| Bindweed, field, 9 | Dogbane, hemp, 5 | Morningglory, bigroot, 9 | Sibara, 8 |
| Bindweed, hedge, 9 | Eclipta, 6 | Morningglory, ivyleaf, 9 | Sicklepod, 10 |
| Blue false indigo, 10 | Eveningprimrose, common, 12 | Morningglory, pitted, 9 | Sida, prickly, 12 |
| Boneset, false, 5 | Falseflax, smallseed, 7 | Morningglory, tall, 9 | Smartweed, hedge, 13 |
| Boneset, late, 5 | Feverwort, 8 | Mullein, common, 14 | Smartweed, Pennsylvania, 13 |
| Bouncingbet, 8 | Flixweed, 7 | Mullein, moth, 14 | Smooth carrion flower, 11 |
| Browneyed-susan, 5 | Galinsoga, hairy, 6 | Mustard, hedge, 7 | Snakeroot, white, 6 |
| Buckbrush, 8 | Garlic, wild, 11 | Mustard, wild, 7 | Solomon's seal, 11 |
| Buckthorn, Carolina, 14 | Germander, American, 11 | Nightshade, bittersweet, 15 | Sorrel, red, 13 |
| Buckthorn, lance-leaved, 14 | Gianthyssop, catnip, 11 | Nightshade, eastern black, 15 | Sowthistle, annual, 6 |
| Buckwheat, wild, 13 | Goldenrod, Canada, 6 | Onion, wild, 11 | Sowthistle, spiny, 6 |
| Buffalobur, 15 | Goldenrod, tall, 6 | Partridgepea, 10 | Spanishneedles, 7 |
| Bundleflower, Illinois, 10 | Greenbriar, bristly, 11 | Passionflower, maypop, 12 | Speedwell, corn, 15 |
| Burcucumber, 9 | Gromwell, corn, 7 | Pellitory, 15 | Speedwell, purslane, 15 |
| Burdock, common, 5 | groundcherry, clammy, 15 | Pennycress, field, 7 | Spurge, nodding, 10 |
| Burnweed, American, 5 | groundcherry, smooth, 15 | Pepperweed, Virginia, 7 | Spurge, prostrate, 10 |
| Buttercup, bulbous, 13 | Groundsel, common, 6 | Pigweed, redroot, 4 | Spurge, toothed, 10 |
| Buttercup, smallflower, 13 | Healall, 11 | Pigweed, smooth, 4 | Sumac, smooth, 4 |
| Carolina geranium, 11 | Hedgeparsley, Japanese, 4 | Pigweed, tumble, 4 | Sunflower, common, 7 |
| Carpetweed, 4 | Hops, Japanese, 8 | Plantain, blackseed, 13 | Tansymustard, green, 8 |
| Carrot, wild, 4 | Horseneettle, 15 | Plantain, bracted, 13 | Teasel, common, 9 |
| Catbriar, 11 | Horseweed, 6 | Plantain, buckhorn, 13 | Teasel, cutleaf, 9 |
| Catchfly, sleepy, 8 | Ironweed, tall, 6 | Plantain, hoary, 13 | Thistle, bull, 7 |
| Chervil, wild, 4 | Ironweed, western, 6 | Poison-hemlock, 4 | Thistle, Canada, 7 |
| Chickweed, common, 8 | Jack-in-the-pulpit, 5 | Pokeweed, common, 12 | Thistle, field, 7 |
| Chickweed, mouseear, 8 | Jimsonweed, 15 | Poorjoe, 14 | Thistle, musk, 7 |
| Chickweed, nodding, 8 | Knotweed, prostrate, 13 | Povertyweed, nuttall, 9 | Thistle, Russian, 9 |
| Chicory, 5 | Kochia, 9 | Puncturevine, 16 | Thistle, Scotch, 7 |
| Cinquefoil, sulfur, 14 | Laceflower, 4 | Purslane, common, 13 | Thistle, tall, 7 |
| Clammyweed, roughseed, 8 | Ladysthumb, 13 | Raccoon grape, 16 | Tick trefoil, 10 |
| Cocklebur, common, 6 | Lambsquarters, common, 9 | Ragweed, common, 6 | Trumpetcreeper, 7 |
| Columbine, 14 | Lettuce, prickly, 6 | Ragweed, giant, 6 | Velvetleaf, 12 |
| Copperleaf, hophornbeam, 10 | Lettuce, tall, 6 | Ragweed, lanceleaf, 6 | Vervain, blue, 15 |
| Copperleaf, Virginia, 10 | Mallow, common, 11 | Rattlebox, 10 | Vervain, hoary, 15 |
| Croton, tropic, 10 | Mallow, rose, 12 | Rocket, yellow, 8 | Virginia-creeper, 16 |
| Croton, woolly, 10 | Medic, black, 10 | Rosinweed, cup, 6 | Waterhemp, common, 4 |
| Dandelion, 6 | Milkweed, common, 5 | Rosinweed, wholeleaf, 6 | Wildindigo, long-bracted, 11 |
| | | | Wildindigo, white, 11 |

Cyperaceae
(Sedge family)

Grass and grasslike plant families

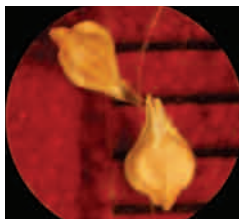
Poaceae
(Grass family)

Cyperaceae (Sedge family)

Missouri is home to more than 200 species of sedges. Agronomically, yellow nutsedge, *Cyperus esculentus*, is considered to be the most problematic in prevalence of this family of plants.



Nutsedge, yellow
Cyperus esculentus



Sedge, fox
Carex vulpinoidea

Liliaceae (Lily family)

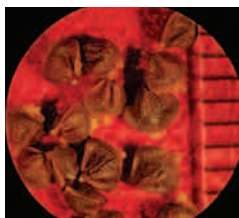
Several members of this family are cultivated as ornamentals, including daffodil and day lily. About 30 species of this family are present in the state.



Garlic, wild
Allium vineale



Onion, wild
Allium canadense



Sedge, Short's
Carex shortiana

Poaceae (Grass family)

About 270 species of true grasses are found in the state. Many species are economically important, including corn, wheat, sorghum, rye, fescue, oats, rice, barley and various millets.



Barnyardgrass
Echinochloa crus-galli



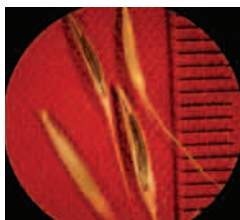
Bluegrass, annual
Poa annua

Juncaceae (Rush family)

More than 20 species of rushes occur in Missouri. Rushes are not true grasses or sedges. Determining individual species of rushes by plant characteristics is nearly impossible.



Rush, grassleaf
Juncus marginatus



Brome, downy
Bromus tectorum



Brome, Japanese
Bromus japonicus



Broomsedge
Andropogon virginicus



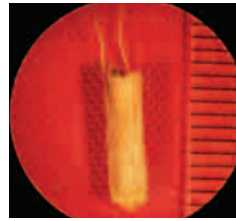
Canarygrass, reed
Phalaris arundinacea

Poaceae
(Grass family)
...continued

Grass and grasslike plant families

**Poaceae
(Grass family)**

Continued



Goatgrass, jointed
Aegilops cylindrica



Goosegrass
Eleusine indica



Cheat
Bromus secalinus



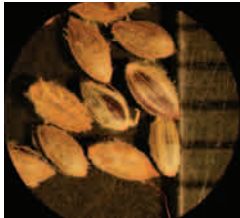
Crabgrass, large
Digitaria sanguinalis



Indiagrass, yellow
Sorghastrum nutans



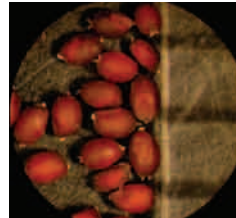
Johnsongrass
Sorghum halepense



Crabgrass, smooth
Digitaria ischaemum



Cupgrass, woolly
Eriochloa villosa



Lovegrass, purple
Eragrostis spectabilis



Mannagrass, fowl
Glyceria striata



Dropseed
Sporobolus asper



Fountaingrass, crimson
Pennisetum ruppelii



Millet, foxtail
Setaria italica



Oat, wild
Avena fatua



Foxtail, bristly
Setaria verticillata



Foxtail, giant
Setaria faberi



Panicum, fall
Panicum dichotomiflorum



Paspalum, field
Paspalum laeve



Foxtail, green
Setaria viridis



Foxtail, yellow
Setaria glauca



Paspalum, hairyseed
Paspalum pubiflorum



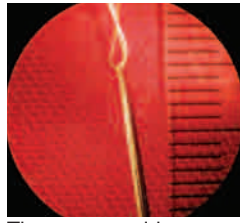
Paspalum, thin
Paspalum setaceum



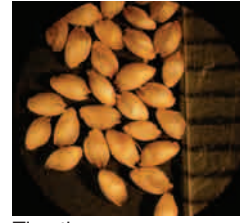
Purpletop
Tridens flavus



Quackgrass
Elytrigia repens



Threeawn, prairie
Aristida oligantha



Timothy
Phleum pratense



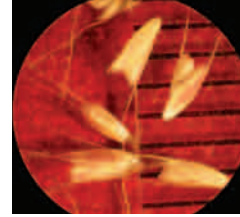
Sandbur, longspine
Cenchrus longispinus



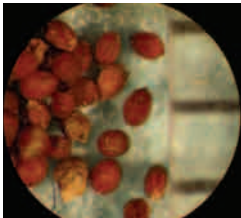
Shattercane
Sorghum bicolor



Tridens, longspike
Tridens strictus



Windmillgrass, tumble
Chloris verticillata



Stinkgrass
Eragrostis ciliaris



Switchgrass
Panicum virgatum



Witchgrass
Panicum capillare

Common name index - Grass and grasslike plant families

- | | | | |
|------------------------------------|---------------------------------|---------------------------------|-----------------------------------|
| <i>Barnyardgrass</i> , 17 | <i>Foxtail</i> , bristly, 18 | <i>Nutsedge</i> , yellow, 17 | <i>Sedge</i> , Short's, 17 |
| <i>Bluegrass</i> , annual, 17 | <i>Foxtail</i> , giant, 18 | <i>Oat</i> , wild, 18 | <i>Shattercane</i> , 19 |
| <i>Brome</i> , downy, 17 | <i>Foxtail</i> , green, 18 | <i>Onion</i> , wild, 17 | <i>Stinkgrass</i> , 19 |
| <i>Brome</i> , Japanese, 17 | <i>Foxtail</i> , yellow, 18 | <i>Panicum</i> , fall, 18 | <i>Switchgrass</i> , 19 |
| <i>Broomsedge</i> , 17 | <i>Garlic</i> , wild, 17 | <i>Paspalum</i> , field, 18 | <i>Threeawn</i> , prairie, 19 |
| <i>Canarygrass</i> , reed, 17 | <i>Goatgrass</i> , jointed, 18 | <i>Paspalum</i> , hairyseed, 18 | <i>Timothy</i> , 19 |
| <i>Cheat</i> , 18 | <i>Goosegrass</i> , 18 | <i>Paspalum</i> , thin, 18 | <i>Tridens</i> , longspike, 19 |
| <i>Crabgrass</i> , large, 18 | <i>Indiangrass</i> , yellow, 18 | <i>Purpletop</i> , 19 | <i>Windmillgrass</i> , tumble, 19 |
| <i>Crabgrass</i> , smooth, 18 | <i>Johnsongrass</i> , 18 | <i>Quackgrass</i> , 19 | <i>Witchgrass</i> , 19 |
| <i>Cupgrass</i> , woolly, 18 | <i>Lovegrass</i> , purple, 18 | <i>Rush</i> , grassleaf, 17 | |
| <i>Dropseed</i> , 18 | <i>Mannagrass</i> , fowl, 18 | <i>Sandbur</i> , longspine, 19 | |
| <i>Fountaingrass</i> , crimson, 18 | <i>Millet</i> , foxtail, 18 | <i>Sedge</i> , fox, 17 | |

