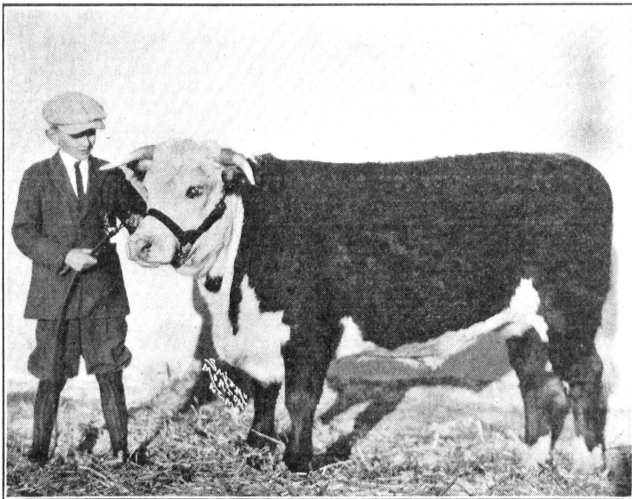


THE BABY BEEF CLUB

Boys' and Girls' 4-H Club Circular 24

COLUMBIA, MO.

JUNE, 1926



COOPERATIVE EXTENSION WORK IN AGRICULTURE AND HOME ECONOMICS

UNIVERSITY OF MISSOURI COLLEGE OF AGRICULTURE AND THE UNITED
STATES DEPARTMENT OF AGRICULTURE COOPERATING

A. J. MEYER, Director, Agricultural Extension Service

Distributed in furtherance of the Acts of Congress of May 8, and June 30, 1914

CONTENTS

	Page
Meetings	4
Suggested Meetings	5
Record Book	4
Meeting I	5
Organization	5
Terms Used About Calf	9
Explanation of Score Card	10
Meeting II	15
Obtaining Calves	15
Marketing	16
Feeding	16
Care and Management	21
Meeting III	23
Development of Calf	23
Training	23
Feeding Problems	24
Elementary Stock Judging	24
Meeting IV	24
Feeding Problems	24
Parasites and Ailments	25
Stock Judging	26
Record Books Discussed	26
Meeting V	26
Discussion of Development of Calf	26
Meeting VI	26
Tour with Instructions in Grooming	27
Care at Show Time	30
Meeting VII	31
Club Round-Up	31
Completion of Record Book	31
Credit and Notes	31
Suggestions for Roll Call and Demonstration	32
Index	36

The Baby Beef Club

BABY BEEF CLUB PROJECT

Object.—The object of the baby beef club work is to organize boys and girls into groups to demonstrate baby beef feeding and management, economy of production, use of balanced rations, cattle judging and exhibiting; and to train the members in rural leadership.

Work Required.—Each club member is required to feed, care for and exhibit a purebred or grade steer, spayed or martin heifer, born between January 1 and September 1 of the year previous to the one in which the calf is shown, with preference for April, May and June calves, according to instructions of the Extension Service of the Missouri College of Agriculture.

The calf must be started on feed on or before April 1, and fed for at least six months, separate from other farm animals, without the use of a nurse cow.

A club member may feed more than one calf but will be permitted to show only one. In case a member feeds more than one calf, he or she must on April 1 designate to the club leader the calf that will be entered in the baby beef show.

Records Required.—Each club member is required to keep a record of the weight of the calf at the beginning and at the close of the feeding period, (from April 1 for a period of at least six months) and to keep a complete record of weights, feed used, their cost and other expenses, and to write a story of the club activities for the year, in a record book provided by the Extension Service of the Missouri College of Agriculture.

Ownership Required.—Each club member is required to own a purebred or grade steer, spayed or martin heifer, of one of the beef breeds, and to provide the necessary feed.

Time Required.—Time necessary to feed and care for the calf.

Time for attendance at six or more club meetings.

Time for one all-day club tour.

Time for one day at a club round-up or achievement exercise at the close of the year's work.

Organization.—The baby beef club may be organized any time

from November to March. Record keeping starts on April first, and may be completed any time after October 1.

BABY BEEF PRODUCTION

The demands of the public for small, juicy, first grade cuts of meat have made cattle that will produce such cuts of meat very popular on the market. The popularity of this class of cattle, which is known as baby beef, and the economy with which young cattle fatten, have resulted in the fattening of large numbers of choice calves each year. They are marketed when 12 to 18 months old weighing 800 to 1,200 pounds. While the feeding of young cattle has for some time been an important industry among cattle feeders, boys and girls have fed calves for baby beef as an important club project only during the past few years. In order that club members may obtain the most information concerning the production of baby beef, it is necessary that each club have its year's program. Meetings should be held to discuss the subject matter relating to cattle and to give the boys and girls a broader view of true club work.

MEETINGS

Standard clubs are required to hold six or more regular club meetings. These meetings should be held at least once a month. Meetings may be held at the homes of the members, the school or any other place most convenient for all. At these meetings all the difficulties concerning the project work which the members have found should be discussed and help should be given them. There should be a business program, discussion of work done and to be done, and a social part of the meeting for pleasure and fun. The program of work given below is only suggestive. You and your local club leader should make it fit the needs of your special club.

RECORD BOOK

The keeping of accurate records is absolutely necessary for club members in order to do the best club work and to receive the most practical training in feeding cattle.

The record should include the weight of the calf at the beginning and close of the feeding period, also the amounts of each kind of grain, roughage and pasture used. A simple and accurate feed record can be kept by weighing or measuring a quantity of feed and placing it aside and feeding from it until all is used, then weighing out another amount, etc. Feed should be charged to the calf when it is weighed out. Any feed that is refused should be saved and charged off of the amount of feed given. In case two calves are

fed together, the feeds may be charged equally to each calf. All points of interest should be carefully written and the records should be neat as well as correct. The record book should be completed and submitted to the local club leader for approval before the round-up.

I. Organization

The boys and girls who have become members of the baby beef club can organize their own club and be making some study of beef cattle production, under the direction of their local club leader, before receiving their calves.

SUGGESTED PROGRAMS FOR BABY BEEF CLUB MEETINGS

1. **Organization of the Club.—Terms Used About the Calf; Score Card.**
 1. The business meeting.—The local club leader in charge.
 - (1) Election of club officers from the membership of the club; (President, Vice-President, Secretary, Song and Yell Leader, and Club Reporter.)
 - (2) Selection of a name for the club. (It is suggested that the name be selected so as to identify the club and the project.)
 - (3) Selection of time and place for regular club meetings.
 - (4) Setting club goals.
 - (5) Appointment of a committee to work up or select an appropriate song and yell for the club, with the song and yell leader as chairman.
 - (6) Assignment of the 4-H club pledge to be learned by all members before the next meeting.
 - (7) Adjournment of business meeting for instructions in club work.
2. **Instructions.—The local club leader in charge.**
 - (1) Explanation of the duties of the club officers and members. Reference: The Club Secretary's Record Book.
 - (2) Distribution of club literature, and explanation of its use as follows:
 - a. A club circular and a club record book, to each member.
 - b. A club secretary's record book, to the club secretary.
 - c. The club book on songs and yells, to the song and yell leader.
 - (3) Explanation of standard 4-H club requirements.
 - (4) Explanation of the club project requirements for the baby beef club.

- (5) Discussion of main club events of the baby beef club for the year.
 - (6) Discussion of:
 - a. Terms used about the calf. Page 9.
 - b. Score Card. Page 11.
 - (7) Stating specifically what each member must do to start or to continue baby beef club work.
 - (8) Assignment of work for the next meeting, including:
 - a. Assignment of topics for roll call. Page 32.
 - b. Assignment of subject matter to be read. Page 9-15.
 - c. The bringing of record books to the meeting.
3. Social hour, games, etc.

II. Obtaining Calves, Marketing, Feeding, Care and Management.

1. The business meeting.—The club president in charge. Reference: Duties of club officers in Club Secretary's Record Book.
 - (1) Meeting called to order by the president, who leads the club members in repeating the 4-H club pledge as follows:

“As a true club member, I pledge my *head* to clearer thinking, my *heart* to greater loyalty, my *hands* to larger service and my *health* to better living—for my club, my community, and my country.”
 - (2) Roll call by the secretary, the members responding by giving a progress report of their home project work and by having the club record book in hand for use in the meeting.
 - (3) Reading of the minutes of the last meeting by the secretary, which should be adopted as a permanent record by the club when approved.
 - (4) Old business:
 - a. Unfinished business from the last meeting.
 - b. Report of the committee on club songs and yells.
 - (5) New Business:
 - a. Appointment of a social committee to plan for some games at future club meetings.
 - b. Anything for the good of the club.
 - (6) Songs and yells, led by the song and yell leader.
 - (7) Adjournment for work.
2. Instruction. The local club leader in charge.
 - (1) Discussion:
 - a. Obtaining calves. Page 15.
 - b. Marketing. Page 16.
 - c. Feeding. Page 16.
 - d. Care and Management. Page 21.
 - (2) Explanation of keeping the record book.
 - (3) Assignment of work for the next meeting, including:
 - a. Assignment of topics for roll call. Page 32.
 - b. Assignment of subject matter to be read. Page 15-23.
 - c. The bringing of record books to the meeting.
3. Social hour, games, etc.

III. Development and Training of the Calf, Feeding Problems, and Stock Judging.

1. The business meeting.—The club president in charge.
 - (1) Meeting called to order by the president, who leads the club members in repeating the 4-H club pledge.
 - (2) Roll call by the secretary, the members responding by reporting on a previously assigned topic and by handing in the record books for use in the club meeting.
 - (3) Reading of the minutes of the last meeting by the secretary.
 - (4) Old business:
 - a. Unfinished business from the last meeting.
 - b. Report of the social committee.
 - (5) New business:
 - a. Appointment of committees.
 - b. Anything for the good of the club.
 - (6) Songs and yells.
 - (7) Adjournment for work.
2. Instruction. The local club leader in charge.
 - (1) Discussion:
 - a. Development of the calf. Page 23.
 - b. Training. Page 23.
 - c. Feeding problems. Page 24.
 - d. Elementary Stock Judging. Page 24.
 - (2) Assignment of work for the next meeting, including:
 - a. Assignment of topics for roll call. Page 32.
 - b. Assignment of subject matter to be read. Page 23-24.
 - c. The bringing of record books to the meeting.
3. Social hour, games, etc.

IV. Feeding Problems, Parasites and Ailments, Stock Judging Continued, Record Book Discussed.

1. The business meeting. The club president in charge.
 - (1) Meeting called to order by the president, who leads the club members in repeating the 4-H club pledge.
 - (2) Roll call by the secretary, the members responding by reporting on a previously assigned topic, and by handing in the club record books for use in the club meeting.
 - (3) Reading of the minutes of the last meeting by the secretary.
 - (4) Old business:
 - a. Report of the social committee.
 - (5) New business.
 - a.
 - (6) Songs and yells.
 - (7) Adjournment for work.
2. Instruction.—The local club leader in charge.
 - (1) Discussion:
 - a. Feeding problems. Page 24.
 - b. Parasites and ailments. Page 25.

- c. Stock Judging continued. Page 26.
- d. Record book discussed. Page 26.
- (2) Assignment of work for the next meeting, including:
 - a. Assignment of topics for roll call. Page 32.
 - b. Assignment of problems for individual demonstrations. Page 34.
 - c. Assignment of subject matter to be read. Pages 24-26.
 - d. The bringing of record books to the meeting.
- 3. Social hour, games, etc.

V. Discussion of the Development of Calf and Team Demonstrations.

- 1. The business meeting.—The club president in charge.
 - (1) Meeting called to order—members repeating the 4-H club pledge.
 - (2) Roll call—members responding by reporting on a previously assigned topic, and by handing in the club record books for use in the club meeting.
 - (3) Old business:
 - a.
 - (4) New business:
 - a.
 - (5) Songs and yells.
 - (6) Adjournment for work.
- 2. Instruction and demonstrations.—The local club leader in charge.
 - (1) Discussion:
 - a. Development of calf. Page 26.
 - b. Giving individual demonstrations before the club as a try-out for the club team. Page 34.
 - c. Discussion of team demonstrations. Page 34.
 - (2) Assignment of work for the next meeting, including:
 - a. Assignment of topics for roll call. Page 32.
 - b. Announcement of plans for club tour.
 - c. Assignment of subject matter to be read. Page 26.
 - d. Arrangement for special meetings with the demonstration team.
- 3. Social hour, games, etc.

VI. Tour With Instructions in Grooming Calves for the Show Ring, Practice Judging, Practice Demonstrating.

- 1. The business meeting.—The club president in charge.
 - (1) Meeting called to order—members repeating the 4-H club pledge.
 - (2) Roll call—members responding by reporting on a previously assigned topic, and by handing in the record books for use in the club meeting.
 - (3) Old business:
 - a.

- (4) New business:
 - a.
 - (5) Songs and yells.
 - (6) Adjournment for work.
2. Instruction.—The local club leader in charge.
- (1) Discussion:
 - a. Instructions in grooming calves for the show ring. Page 27.
 - (2) Practice judging. Page 26.
 - (3) Practice team demonstration. Pages 34-35.
 - (4) Assignment of work for the next meeting, including:
 - a. Completing record book. Page 30.
 - b. Instructions regarding preparation for the round-up.

VII. The Club Round-Up.

The club round-up should be held at the close of work for the club year. The round-up consists of a calf club show, and may include a judging contest and a public program.

SUGGESTED PUBLIC PROGRAM

1. A typical club meeting by the club.
2. A brief history and a short statement of the club's achievements by a club member or the local club leader.
3. One or more demonstrations by club teams (with or without a contest).
4. A talk on 4-H club work.
5. Awarding a 4-H club achievement button, if given, to each member of the club who handed in a complete record book to the local club leader before the round-up.
6. Announcement of club plans for the coming year.
7. Adjournment.

SUGGESTIONS

Only club members who make a complete report or have their records up-to-date, should be eligible to take part in county, district, state, or inter-state contests.

TERMS USED ABOUT THE CALF, SCORE CARD

In starting any new project there are always some terms that have to be explained before one can understand the work. The names of the parts of the calf and the location of each part should be learned so that every member will know whether or not his calf is up to standard and to be able to compare his calf with the others.

It would be a good plan to study the diagram carefully for some minutes and then lay it aside. Hang a large picture of a calf where every one can see it then let the leader ask questions and see who will be able to locate a given part of the calf first. For example, Where is the brisket? The first person who can answer might point it out on the large picture. Where is the twist? etc. This little scheme might be reversed and the leader might point to some

part and the first person who can name the part will be allowed to ask the next question. This plan of becoming familiar with all parts of the calf can be varied and in a short time every one will know exactly where any particular part is when he reads about it in the circular or livestock papers.

The score card included in this circular shows the value attached to each separate part. Following this with practice each member will soon be able to see quickly the important and the unimportant points to consider in judging a calf.

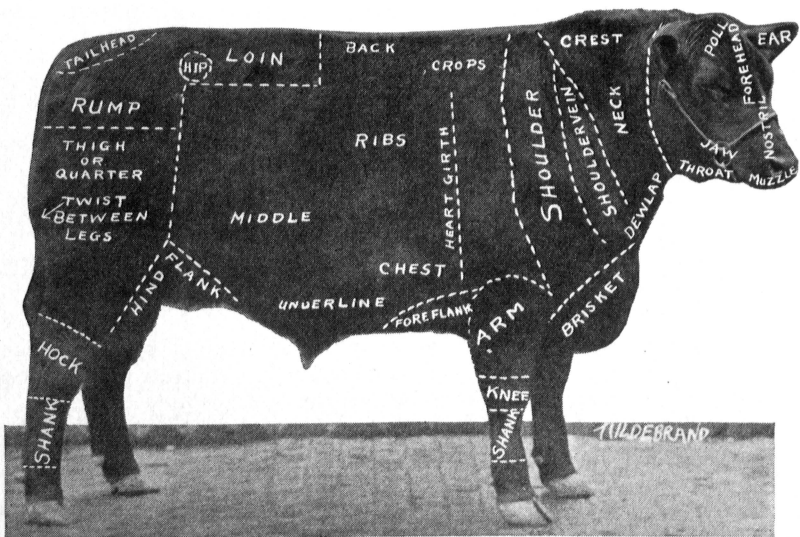


Fig. 2.—Diagram showing location of various parts of baby beef.

Score Card Explained.—You will notice by continued study that the score card gives 22 points for the hindquarters while there are only 12 points given for the forequarters. This difference is due to a large percentage of the hindquarters being sold as round steak and rump roast which are more valuable cuts, containing less waste than the brisket, chuck and plate, which are cheap cuts obtained from the forequarters. Cuts from the forequarters are usually sold for roasting and boiling because of the large amount of bone and waste. You will also notice that 32 points are given to the body with 7 points to each, the back, ribs and loin. This large number of points is given to those parts because they contain some of the high-priced cuts of the carcass, the most valuable one being

SCORE CARD.—BEEF CATTLE—(FAT STEERS)

SCALE OF POINTS		Possible Score
Age, estimated	yrs., actual	yrs.
GENERAL APPEARANCE—26 Points		
Weight, estimated	lbs., actual	lbs.
score according to age		6
Form, straight top line and underline; deep, broad, low, medium length, symmetrical, compact, standing squarely on legs		8
Quality, bone of firm texture, fine skin; silky hair; clearly defined features and joints; mellow touch		6
Condition, thick, even covering of firm flesh, especially in regions of valuable cuts; indicating finish; light in offal		6
HEAD AND NECK—8 Points		
Muzzle, good size, lips thin; nostrils large and well apart; jaws wide		1
Face, short, broad, profile straight		1
Forehead, broad		1
Eyes, large, full, clear, bright		1
Ears, well carried, fine, medium size		1
Neck, thick, short, throat clean, dewlap slight		3
FOREQUARTERS—12 Points		
Shoulder Vein, full smooth		3
Shoulders, smoothly covered with firm flesh; compact		5
Brisket, broad, full; breast wide		2
Legs, straight, short, strong, wide apart; forearm full; shank fine; feet sound		2
BODY—32 Points		
Chest, deep, broad; girth large; fore flank full		4
Crops, full, thick, even with shoulders		5
Back, broad, straight, medium length; thickly, evenly and firmly fleshed		7
Loin, broad, straight; thickly, evenly and firmly fleshed		7
Ribs, deep, well sprung, closely set, thickly, evenly and firmly fleshed		7
Flanks, full, low		2
HINDQUARTERS—22 Points		
Hips, smoothly covered, proportionate width		3
Rump, long, level, width well carried back; thickly, evenly and firmly fleshed		5
Pin Bones, wide apart; not prominent		1
Tail, fine, tapering, medium length		1
Thighs, deep, wide, well fleshed		4
Twist, deep, broad, well filled		6
Legs, straight, short, strong, shank smooth, feet sound		2
Total		100

the loin. Although the ideal feeder head is an indication of feeding capacity in the feeder calf it is not so important in the finished baby beef, for in the judging of fat animals emphasis is placed on (1) quality, (2) thickness, firmness and smoothness of flesh, (3) mellowness of touch, (4) small amount of offal or waste at butchering time.

You will find after studying the calf by means of the diagram and score card that there are certain characteristics which you will look for in purchasing or selecting your calf.

Form.—The form of the calf is of great importance. It should have: (1) deep, broad, compact body; (2) well sprung ribs; (3) full heart girth; (4) back wide and well fleshed; (5) middle deep and not cut up in the hind flank; (6) straight top and underlines; (7) well developed hindquarters; (8) thighs full; (9) twist deep; (10) short, straight, well placed legs; (11) medium sized bones and horns.

Head.—The head should be short and wide with a broad muzzle, large nostrils, and large, quiet eyes. These characteristics indicate great feeding capacity.

Neck.—The neck should be short and thick and blend smoothly into the shoulder.

Besides form there are other points that are necessary to consider in the selection of a calf. These are constitution, quality, breeding, age and sex.

Constitution.—In order to consume large quantities of feed and put on the greatest gains at the least cost, the calf should have a strong constitution. This is indicated by a deep chest, great width between the fore legs and the brisket being extended well forward. The fore ribs should be long and well sprung and the fore flank full with no signs of a shallow or narrow heart girth.

Quality.—The quality of the calf is shown by its general appearance, smoothness, mellow skin, fine coat and medium sized bones and horns. A calf lacking in quality will become coarse, rough and patchy as it grows and lays on fat.

Breeding.—Both the form and quality of a calf are dependent upon its breeding. It is best to select calves whose sires and dams are representatives of the beef breeds, either Shorthorn, Hereford, Aberdeen-Angus or Galloway. At least, the sire should be pure bred. Great care should be taken not to select a calf possessing any dairy blood as it will not fatten thickly over the ribs, back and hind quarters where the highest priced cuts are located.

Age.—The calves selected by the club members should be as nearly uniform in age as possible. The exact age should be determined somewhat by the time of marketing and the age requirements of the show in which they will be exhibited.



Fig. 3.—Wholesale Division of Beef Carcass.

- 1. Hind Shank.
- 2. Round, Rump and Shank off.
- 3. Rump.
- 4. Sirloin end of loin
- 5. Porter House or Short Loin
- 6. Flank
- 7. Ribs
- 8. Navel end of Plate
- 9. Brisket end of Plate
- 10. Fore Shank
- 11. Chuck
- 12. Neck

} Loin
 } Plate

Calves are classified as Juniors and Seniors depending on the time they are born. A calf to be known as a junior calf must have been born after January 1 and before September 1. A calf born after September 1 of any year and before January 1 of the follow-

ing year is classified as a Senior. For example a calf born after September 1, 1922, and before January 1, 1923, is considered a senior calf during 1293 and a senior yearling during 1924 while a calf born after January 1, 1923 and before September 1, 1923, is

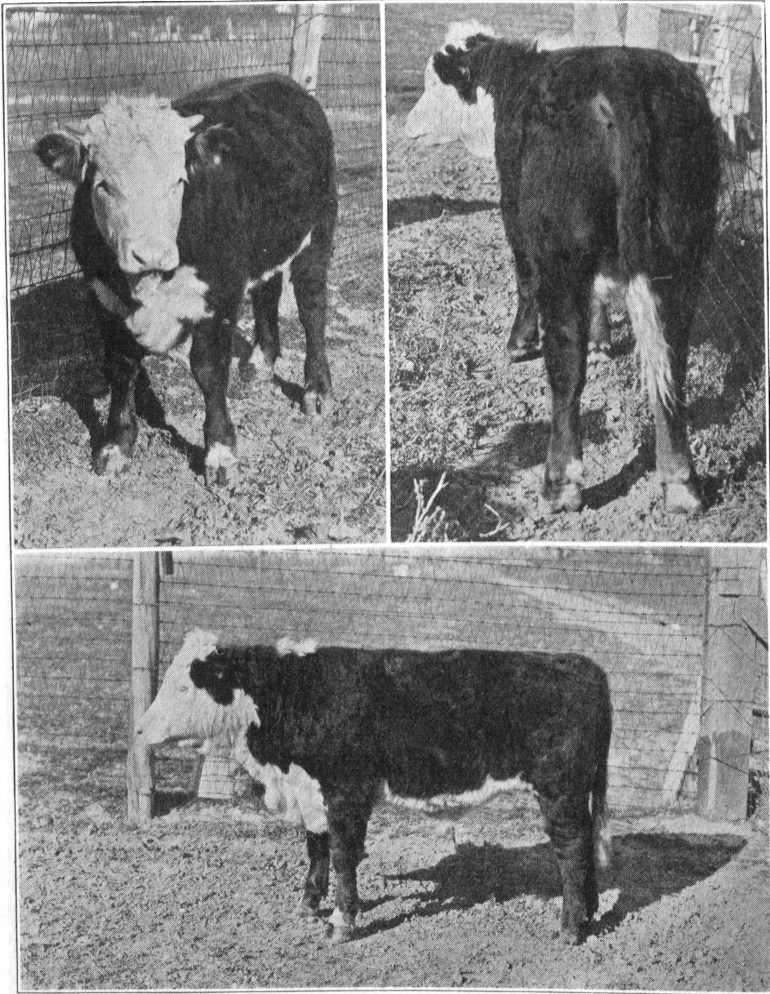


Fig. 4.—Front, rear and side views of a good type of calf for producing baby beef.

considered a junior calf until January 1, 1924, when it becomes a junior yearling for the year 1924.

Sex.—Packers prefer fat steers for baby beef rather than heifers of the same weight and usually will pay from 50 cents to \$1.50 a

hundredweight more for steers. Steers have a tendency to feed more quietly and fatten more evenly though heifers mature more quickly and can be marketed at an earlier age than steers. Heifers carried through a long feeding period are apt to become rough and patchy.

RECORD BOOK

After the Local Leader has explained the keeping of the Record Book each member should write a careful report of the Organization Meeting giving the number of members, officers elected, committees appointed and any other facts about the meeting.

II. Obtaining Calves, Feeding Care and Management of Calf

OBTAINING CALVES

When the members are secured the calves may be obtained for the project by selecting a purchasing committee which will buy all of the calves to be distributed by lot, or each member may select and purchase his own calf. Either way of obtaining the calves is satisfactory and the method used in the particular club should be dependent upon local conditions.

Where few calves of desirable form and quality can be obtained in the immediate community it will perhaps be more satisfactory to purchase the calves in one lot from a breeder or on the open market. The purchasing committee should be men with experience in selecting calves for baby beef and should buy only choice, uniform animals. The calves should be distributed by drawing numbers. Two sets of numbers should be prepared, one set to be pasted or tied on the calves, the other to be drawn by the members. The number drawn entitles the club member to the calf bearing the same number. The members should pay for their calves at the average price per pound based on the weight of their individual calf. This is a very fair method of distributing calves as it gives every member an equal chance.

In communities where several herds of pure bred cattle are to be found club members should be able to select and purchase their own calves. Where individuals purchase their own calves care should be taken to select animals that will develop satisfactorily. All calves selected in this way should be approved by the County Extension Agent, a livestock specialist or some one capable of passing on them.

The calves should be purchased in the fall before the majority of the desirable ones are marketed or started on feed.

It should be remembered that this is a practical feeding operation and calf club members should buy their calves at such a price and feed them in such manner that they can be disposed of through regular marketing channels. Auctions at terminal markets may be used as a means of disposing of the calves. Such auctions have recently been provided at most terminal markets. In such auctions each calf is sold on its individual merits. Local auctions have not proven satisfactory.

If the calves have not been vaccinated to prevent blackleg they should be vaccinated as soon as purchased. For instructions regarding vaccination see page 25.

Club members who do not have money to pay for their calves at the time of purchase may be able to arrange with their local bank for credit. In such cases a note covering the purchase price and bearing the current rate of interest to come due at the close of the project should be signed by the club member. For form of note, see page 31.

Losses are not great among young cattle that are vaccinated to prevent blackleg and receive proper care but occasional losses occur. Club members can insure their calves thus protecting themselves against such losses. For full details see page 25.

FEEDING

It is well to remember in starting your project that young animals grow as well as fatten, therefore it requires more time to finish a calf than is required in the case of an older animal. A feeding period of at least six months is necessary to fatten a calf sufficiently to meet the requirements of the choice baby beef market. A longer feeding period may be desirable. A calf should be started on feed gradually. Any increase in the amount of feed should not be so great as to cause scours or digestive disorders. Once the digestive system is disturbed, the animal is more likely to have later attacks and will not feed so regularly. A mixture of equal parts by measure of corn and oats is a good feed with which to start. This can be changed gradually after the first week to the ration you wish to use. The calf should not receive more than one-half pound per day of the grain mixture at first, for each 100 pounds of its own weight. For example, if the calf weighs 300 pounds it should receive not more than $1\frac{1}{2}$ pounds of grain per day. This amount should be gradually increased after the calf begins to eat, until at

the end of a second or third week, it is receiving about two pounds per day for each 100 pounds of live weight or all the grain it will eat at each feed. For example, if the live weight of the calf is 300 pounds, at the rate of two pounds for each 100 pounds live weight the calf should receive about 6 pounds per day of the grain mixture, or about 3 pounds at the morning feeding and the same at night. If the calf is to be fed for 8 or 10 months it should not be started on full feed or grain in such a short time. In addition to the small amount of grain the calf should receive all of the hay it will eat. If it has not been accustomed to alfalfa or clover hay, only small amounts of these feeds should be given as large amounts may cause bloating which is a serious disorder. Remember, it is important that changes in amounts or kinds of feed should be made gradually in order to avoid much serious trouble.

Correct feeding is absolutely necessary to keep the appetite of the calf regular and cause it to lay on fat rather than grow. The feed should be palatable, and composed of a variety of fresh, thoroughly mixed feeds, free from dust or mold.

Classes of Feeds.—Feeds are divided into two main classes, Concentrates and Roughages.

Concentrates are grains and the feeding stuffs of a condensed nature, the greater part of which is readily digested by animals, as: corn, oats, bran, linseed oil meal, cotton seed meal, molasses.

Roughages are the bulky feeds, a large part of which is not digested by the animal, as: hay, silage, corn fodder, pasture, straw.

It takes a much greater quantity of roughage to furnish the same amount of digestible food for the animal than is necessary in concentrates. Calves belong to the ruminant class of animals or those chewing cuds and for this reason roughages are very important as they help to keep their digestive systems in order.

COMPOSITION OF FEEDS

The value of a feed depends upon the things it contains, its digestibility, or the amount of the feed that can be digested, and the palatability or the agreeableness of the taste.

The things a feed contains, or the feed nutrients, are protein, carbohydrates, fats, fiber, and mineral matter. These nutrients may not mean much to you by name, but they are the parts of the feed that influence the development of the calf.

Protein is the part of the feeding stuffs which helps to build blood, tissues, muscles, vital organs, skin, hair, horns, and hoofs.

Carbohydrates have as their main duty that of furnishing heat and energy for work. They are rich in sugars and starches and when an extra amount of carbohydrates is eaten by the animal it is stored as fat.

Fats or Oils furnish heat and energy and are stored as fats.

Fiber is the woody and less digestible part of a feed. Its chief importance is to give bulk to the feed.

Mineral Matter or Ash furnishes the mineral matter for the building of the skeleton.

FEED STUFFS

Corn is rich in carbohydrates and fats and for this reason it is the best of all fattening foods. However, it has only a small amount of protein and ash for tissue and bone building. If the corn is fed with linseed oil meal, wheat bran, and clover or alfalfa hay more satisfactory results will be obtained than when it is fed alone because these supply protein and ash to balance the carbohydrates in corn. Corn may be fed either shelled or ground; the ground corn is preferred when finishing calves for show purposes as they will eat larger amounts and it will mix more readily with other feeds, but it should not be ground too fine.

Oats is a feed that is higher in protein and mineral matter than corn. It gives bulk to the ration or feed and is much relished by the calf. Oats should be free from mold or dust and may be fed either whole or ground. Crushed or coarsely ground oats is more palatable than finely ground oats. Oats is a safe feed to use when starting the calf on feed.

Wheat Bran is a good feed to add to the ration as it is high in protein, pleasing to the taste and has a slightly laxative and cooling effect on the animal. Although it is valuable in the ration of the show and breeding animal it usually costs too much to be used in large quantities for commercial cattle feeding.

Linseed Oil Meal or Cake is of special importance in the ration of the growing calf because it is rich in protein. The amount fed should depend upon the age of the calf and the feeds used in the ration. The feeding of linseed meal should be started gradually. Begin by feeding very small amounts and as soon as the calf has learned to eat the meal, gradually increase the amount until the calf is eating $\frac{1}{5}$ of a pound of linseed meal for each 100 pounds of its weight. If the calf weighs 500 pounds, it should receive $\frac{1}{2}$ pound of the linseed meal at each feed when it is fed twice each day. The pea sized cake is more palatable than the meal. Cotton seed

meal may be substituted for the linseed meal, but it is not so good for the growing calf. In cases where cotton seed meal is fed, the calf should receive not more than 1½ pounds per day of the meal and that for only a short time.

Molasses.—Cane molasses, sometimes called black strap molasses, is well liked by cattle and is often used as an appetizer. It has a feeding value about equal pound for pound to that of corn. Only small quantities should be fed because of its laxative effect. About one-fourth to one-half pint mixed in enough water to moisten the feed is sufficient and should cause no bad effects.

Molasses and alfalfa feeds may be fed in small quantities as appetizers if the cost is not too great to be in keeping with their feeding value. Molasses and molasses feeds are low in protein and should not be fed in place of protein feeds.

Hay.—The calf must have some bulky or coarse feed. This should be supplied in the form of some legume hay such as alfalfa or clover. Both are high in protein and bone-building material and are to be preferred to prairie or timothy hay.

Pasture.—Grass is a palatable feed and may be used advantageously in producing baby beef. The calf should be allowed the run of a pasture a few hours each day or at night during hot weather. Grass contains a great amount of water in the early spring and may cause a loss of appetite and scours, if the calf is allowed too much of it. It will eat very little grass while on full feed, but the small amount eaten and the exercise on pasture will act as an appetizer.

You may expect your calf to eat slightly less grain when it is turned on pasture at night but it should be fed and given sufficient time to eat its grain before being turned out. If the amount of grain eaten is decreased too much your calf will not fatten as rapidly as it should. This difficulty may be corrected by placing the calf on pasture where the grass is shorter or by allowing it on the grass only a few hours each day.

RATIONS

It is not possible to suggest a ration that will give the best results in all cases, as individual calves differ in the way they feed.

Any of the rations suggested below will give satisfactory results. Ration No. 1 is the one that has been most widely used by club members in finishing their calves. It is made up largely of home grown feeds, has bulk, and contains a variety of feeds. Although oats are sometimes expensive, their addition to a ration of corn often makes it easier to keep a calf on feed. Ration No. 2 is

more concentrated and contains more fattening feeds. It should be used during the latter part of the feeding period for calves that do not finish readily. Rations No. 3, 4, and 5 usually are not so economical for commercial cattle feeding. Their use, at times, may enable a club member to secure a more even finish on his calf. They make satisfactory rations for breeding animals.

RATION No. 1

Corn 6 parts. Linseed oil meal 1 part.
Oats 2 parts.

Alfalfa or clover hay—all the calf will eat during the first part of the feeding period and limited amounts during the last half of the feeding period.

RATION No. 2

Corn 6 parts. Linseed oil meal 1 part.
Alfalfa or clover hay. (See Ration No. 1.)

RATION No. 3

Corn 3 parts. Bran 1 part.
Oats 2 parts. Linseed meal 1-2 part.
Alfalfa or clover hay. (See Ration No. 1.)

RATION No. 4

Corn 4 parts. Bran 1 part.
Oats 1 part. Linseed meal 1-2 part.
Alfalfa or clover hay. (See Ration No. 1.)

RATION No. 5

Corn 1 part. Bran 1 part.
Oats 1 part. Alfalfa or clover hay (See 1).

The calf should be fed at least twice each day. Any feed stuffs left from a feeding should be removed and the trough cleaned before the next feeding. The self-feeder is not recommended for one calf, although it may be used with satisfactory results in feeding carload lots.

Twice each day is often enough to feed at first but during the last part of the feeding period the calf should be fed three times a day. During the summer the morning feed should be given early as the calf will eat better in the cool of the day. The feeds should be thoroughly mixed. Ground feeds may be moistened with water containing some black strap molasses or a pinch of salt. Feeds that are fed moistened should be just damp enough to press into a ball.

Hay should be in limited amounts during the last half of the feeding period. Two or three pounds of hay per day should be suf-

ficient. If the calf has a tendency to be paunchy the hay and grass should be limited during the entire feeding period.

Once a calf is on full feed, stick to the same ration. Don't change from one feed to another. Make any change gradually. Feed the same amount at the same hours each day. Make the ration palatable and keep the calf's appetite vigorous. It is better to feed slightly less than the calf will eat than to get it "off feed" by over feeding.

Water.—The calf should have all the clean, fresh water it will drink at all times.

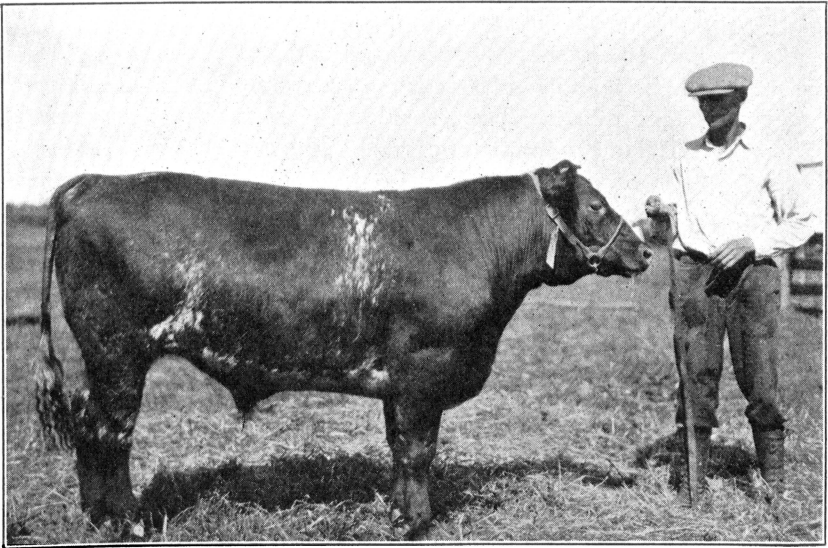


Fig. 5.—A well trained Shorthorn calf—and a prize winner.

Salt.—Calves should always have a plentiful amount of salt kept before them as they consume large quantities when they are fed heavily.

CARE AND MANAGEMENT

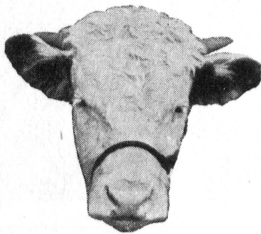
As important as feeding is, there are other things that will help the calf to make large gains, these are care and treatment. Other things being equal, the calf receiving the best care and kept in the most comfortable quarters will make the most economical and satisfactory gains.

The calf should be kept in a roomy, well ventilated stall, that has a dry floor and a low, wide manger. The stall should be well

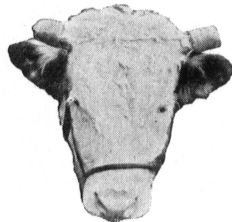
bedded so the calf will lie down as much as possible as the calf makes its greatest gains when it is lying down, comfortable and contented.

The manger and feed boxes should be kept very clean, for this not only prevents disease, but also helps to prevent loss of appetite. The calf should be allowed to exercise in a lot on clear days during the winter and early spring, but in the late spring and summer it should be kept in the stall during the day, and allowed to run in a small pasture at night. If flies bother the calf the stall should be darkened and the calf should be protected by a blanket of burlap. Keep the calf out of the hot sun from June to October in order to preserve the gloss of its hair.

The calf should be taught to lead and stand when tied. If it is very wild it should be left tied for several days and disturbed only at feeding time. A halter made of 1-2-inch rope is serviceable and very satisfactory for this purpose. The calf should be led some each day as soon as it becomes sufficiently quiet. Its stubbornness will be overcome by gentle and patient handling. Do not let the calf get loose the first time it is led, as this may make it more difficult to train.



Up-turned horns



Use of horn weights

(Figure 6)

Horns of the proper shape will improve the appearance of the head very much while a pair of upturned horns are unsightly and will greatly detract from the appearance. If the horns have a tendency to turn up they can be trained to the correct position by the use of horn weights while the animals are young and the horns are still growing. In extreme cases it may be necessary to rasp the underside of the horn so it will turn down. If too much is removed with the rasp the shell will be made thin and there will be danger of the horn being easily broken. As soon as the tips of the horns

are slightly below the level of the base, the weights should be removed.

The feet should be kept clean and free from soreness. Very little difficulty will be experienced if the calf is kept in a clean well bedded stall and given plenty of exercise. If the feet become sore and feverish, clean them thoroughly, and wash them in a saturated solution of bluestone or apply tincture of iodine to the affected parts. In making the bluestone solution, stir in all of the powdered bluestone that can be absorbed in one quart of hot water. The amount that can be absorbed will be reached when there is some of the bluestone left undissolved after stirring. Bluestone can be obtained at any drug store.

RECORD BOOK

After purchasing the calves an interesting account can be written telling how the calves were obtained, how much you had to pay for your calf and what rate of interest you paid on your note. Any other worthwhile points that came up at the meeting should be recorded in your record book, too. Don't forget to keep account of the feeds and weight of calf and make a record at the time of each weighing so that you will not have an opportunity to forget.

III. Development and Training of the Calf, Feeding Problems, and Stock Judging

DEVELOPMENT OF THE CALF

By the time you have your third meeting there will be much to report on the progress of your calf. It may be of interest to have a discussion of various rations that are being fed by each club member and the gains that have been secured.

TRAINING

The calf can be handled with less effort while it is small so the owner should see that the calf is gentle and well-mannered before it becomes too large to be handled easily.

In putting the halter on the calf place the head stall back of the ears and the lead at the left jaw so the person leading can walk at the left side.

The first point is to get the calf gentle, then teach it to lead and to stand squarely on all four feet with its head up and its back level. This can be done by leading the calf to and from the pasture or watering place, stopping occasionally and standing it in proper position. When the calf is standing, the feet should be set squarely

under the body and they should not be extended to the front or rear as that stretches the body and causes the back to appear low and the rear flank shallow. The feet can be placed by touching the calf gently above the hoofs with the foot or a stick. Once the calf is trained it should be accustomed to strange sights and to being handled by strangers. The well trained calf has a great advantage in the show ring or at a sale over the stubborn one which stands improperly, for it shows in the best possible manner the development of the chest, the strength of the back and the fleshing of the hind quarters.

FEEDING PROBLEMS

The feeder's problems become more difficult with the heat of the summer. Unless a bulky and palatable ration is fed the calf's appetite will not be so sharp. The appetite may be improved by increasing the amount of oats and slightly decreasing the amount of corn. While green corn stalks are valuable as an appetizer they should be fed only in small amounts chopped and mixed with the grain ration. The feeding of new corn is not advisable as it causes the calf to refuse dry grains.

ELEMENTARY STUDY OF STOCK JUDGING

An elementary study in stock judging may be made at this time. This will give club members an opportunity to judge other farm animals. Instructions should be given to club members by the Local Leader, some stockman, the County Extension Agent, or a livestock specialist.

RECORD BOOK

The report of the progress and the rations you have been using will be of interest now. Don't fail to give account of any experiences you have had. Perhaps there have been some amusing experiences in training your calf. If so, tell about them. Who gave a demonstration on Stock Judging and what did you learn about it? Have you kept up the social part of your meetings? The social part is important for it develops club and community spirit.

IV. Feeding Problems, Parasites and Ailments, Stock Judging Continued, Record Book Discussed

FEEDING PROBLEMS

The development of your calf is largely due to the ration you have been feeding. If your calf has not developed as it should it

may be advisable to make some changes in the ration, but before any changes are made, you should consult the local leader, the County Extension Agent, or a live stock specialist.

PARASITES AND AILMENTS

Even if you have been careful in feeding, and in keeping the calf, the manger, and the feed boxes clean, you may have some trouble from such parasites as lice, and from digestive disorders, and disease.

Lice and mites causing mange often infest barns and stables, so calves sometimes are much troubled by them. These are not serious if they are treated as soon as discovered. To get rid of lice sponge the animal thoroughly with kerosene emulsion. To make the emulsion dissolve 1-3 cake of laundry soap in 1-4 gallon of warm water and stir in 1-2 gallon of kerosene. After the kerosene and soap are thoroughly mixed add 15 gallons of water. Repeat the treatment in two weeks. This treatment should be applied only on a warm bright day when the animal can remain in the sun until dry.

Warbles or Grubs are first noticed by swellings along the back. To squeeze them out may cause a sore place on the back. They should be left entirely alone.

Scours is a digestive disorder caused by over feeding, irregular feeding, dirty feed troughs, impure water or damaged feeds. It has a tendency to check the growth of the calf and can usually be corrected by changing to feed free from mold, or by withholding a part of the feed. If this does not correct the trouble mix two tablespoonsful of turpentine in a quart of raw linseed oil and give as a drench. Care must be taken not to hold the calf's head too high while drenching. If the head is held too high, the calf may become strangled, which is very serious and often results in death. Feed sparingly for 24 hours then gradually increase the amount so the calf will be on full feed in about a week.

Bloating may result from several causes but is very serious and should be relieved at once. To relieve bloating give the calf one quart of raw linseed oil in which two tablespoonsful of turpentine have been mixed. A gag made of rope should be placed in the calf's mouth. As a last resort the animal may be relieved by tapping but this should be done only by an experienced person.

Blackleg is an infectious disease that is common among calves. The animals can be protected against the disease by vaccination

and each one should be vaccinated as soon as purchased. Information and vaccine may be secured from your local veterinarian.

STOCK JUDGING

Stock judging should be continued and members may give demonstrations or judge rings of animals under the supervision of the leader.

DISCUSSION OF RECORD BOOKS

Record Books should be discussed and where help is needed the leader should be consulted.

What feeding problems have you had lately? Has your calf had any disorders or ailments? If so tell about them and what you did? Be sure that all of your feed records and expenses are entered in the Record Book under the proper heading. Record Books should be accurate, neat, and interesting.

V. Discussion of the Development of Calf and Team Demonstration

At this meeting there will be a great deal to tell about the development of your calf and a real "experience meeting" will prove most interesting and instructive. More Stock Judging can be done and members of the club should place rings of animals and give reasons for their placing.

RECORD BOOK

Give results of the meeting on the Development of Calf and tell about the Stock Judging and the part you took. Tell about any other interesting numbers that were on the program.

VI. Tour With Instructions in Grooming Calves for the Show Ring, Stock Judging

At this stage of the club work a tour should be made to all the homes of the members and each calf studied. Club members, their parents, and others interested in the project should attend and make it a big community day. The noon stop should be made at a place where there is shade. A basket dinner should be spread and some time allowed for rest. Club members can furnish entertain-

ment by giving songs, yells, or demonstrations. The day should be one for the development of the project and community spirit.

GROOMING

The final instructions on preparation of the calf for the show ring with demonstrations should be given. When the calf has been fattened, the next important matter is to present it in the show ring in such a way that it will make the best appearance. In order to do this it is necessary that the calf be well mannered, properly groomed and carefully shown. A good calf is often placed or rank-

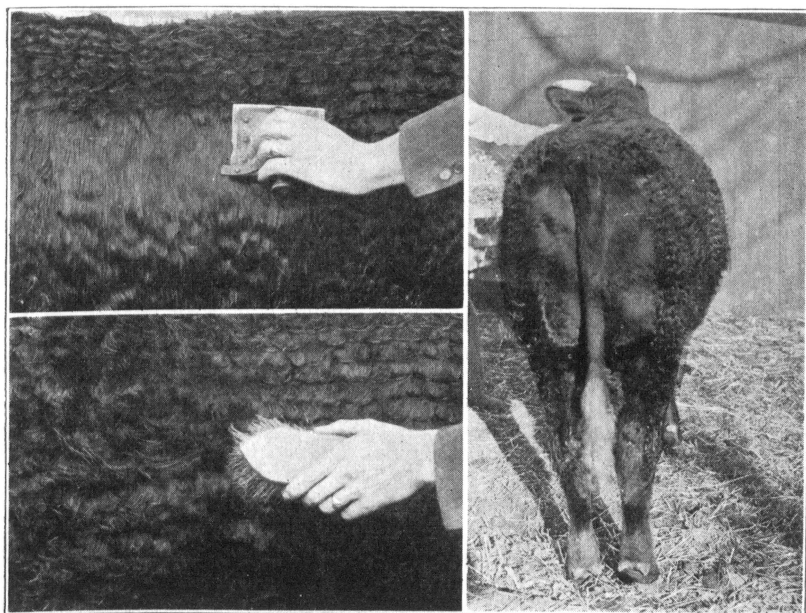


Fig. 7.—Steps in making curl in parallel lines.

ed below one that is inferior because it does not stand properly and quietly. You have already been told in Meeting III, how to make the calf stand correctly.

The care of the hair and the manner of grooming are important in making the calf appear its best. The hair is an index to quality and every effort should be made to have it appear glossy and full of life instead of harsh and dead. The gloss of the hair can be preserved by keeping the calf out of the hot sun for a few months before the show, especially from June to October, as during these

months the coat will sunburn and appear dead and coarse. A few weeks before the show the calf may be blanketed to advantage. The blanket should be made of burlap and it is used chiefly to keep the flies from worrying the calf and to improve the condition of the hair and skin.

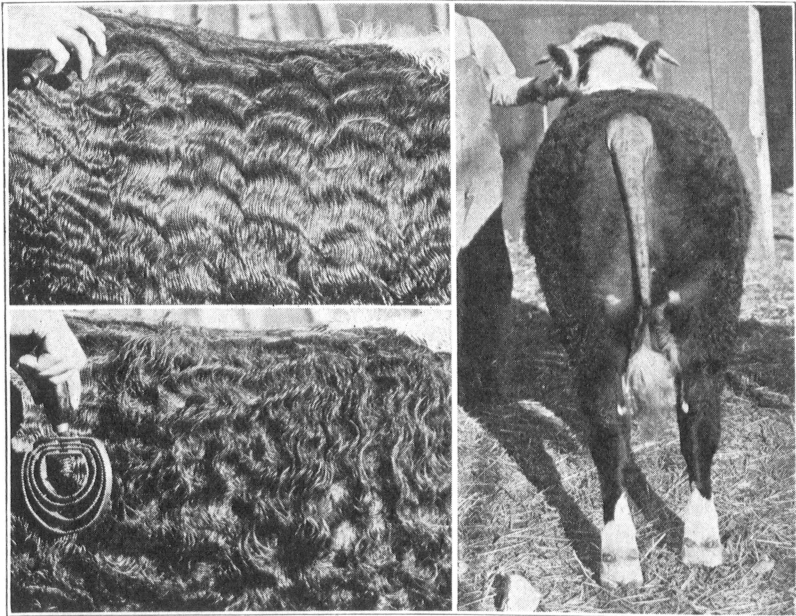


Fig. 8.—Steps in making curl in wavy lines.

The condition of the hair and skin can be further improved by washing the animal every few days and brushing it thoroughly every day. Occasionally a thick lather made from tar soap should be used in washing in order to remove any dirt from the skin and hair. When soap is used care should be taken to rinse the hair thoroughly. Frequent washing keeps the animal free from dirt and serves to stimulate the growth of hair.

The manner of grooming the calf for the show ring will depend upon its breed and individuality. Herefords, Shorthorns and Galloways are usually shown with hair curled, while Aberdeen-Angus are shown either with the hair curled or smooth. The method of preparing for the show ring will depend entirely upon the individual, the object being to prepare the calf so it will best exhibit its desirable qualities.

Curling.—There are two ways of curling the calf's hair. In either case the animal should be wet with water containing a few drops of some good dip solution. This will stiffen the hair and cause it to stand up. The hair should be parted along the back and brushed down smooth. In making the curl in parallel lines, as shown in the illustration, such as is used on Shorthorns and Aberdeen-Angus, take a straight bar comb and make the lines about $1\frac{1}{4}$ inches apart, then brush up until the hair stands on end.

If the curl with wavy lines is desired, as shown in illustration below, use a round comb to make the marks then brush up. Herefords and Aberdeen-Angus are usually curled with the wavy lines. The hair covering all depressions on the animal's body should be combed so it will stand on end.

If the calf is smooth and its hair short, it can be shown with the hair smooth. In that case the hair should be brushed down and rubbed with a woollen cloth dampened with equal parts of olive oil and denatured alcohol. This will give gloss to the hair.

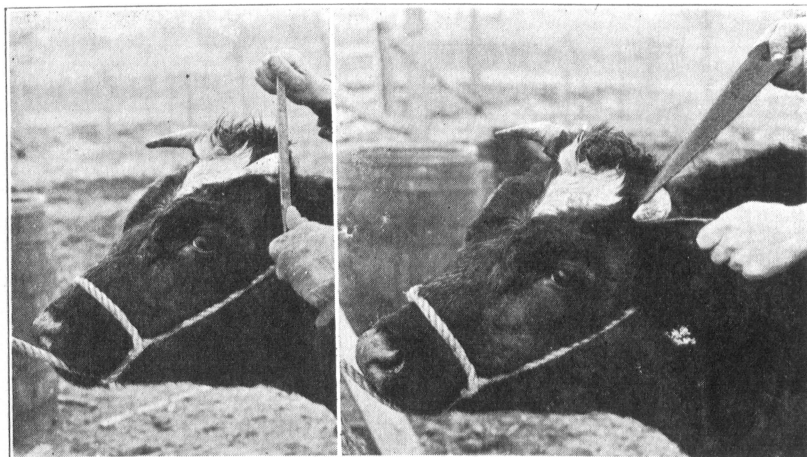
Clipping.—The heads of Aberdeen-Angus cattle should be clipped a few weeks before the show. The hair should be clipped back to a line which is about one inch back of the jaw bone. The eye lashes, the hair inside the ears and the long hair around the muzzle should not be clipped. The heads of the horned breeds should not be clipped but the hair should be brushed and curled.

The development of the twist and quarters can be shown to the best advantage by clipping the tail. Begin clipping just above the switch and clip up to the tail head, gradually tapering off so it will not be necessary to clip any hair off the rump. The clipping should be done several days before the show. The switch of the tail should be brushed out by taking hold of the tip and brushing forward. If the hair in the switch is coarse and straight it should be washed the night before the show and braided while damp into three or four braids. It should be unbraided and brushed just before leading into the ring.



Fig. 9.—Aberdeen-Angus head clipped back to white line.

Horns.—A well polished pair of neatly turned horns improves the appearance of the head and attracts attention. The rough surface should be removed with a rasp or file and the horns finished with emery paper and polished with a woolen cloth moistened with a few drops of oil. The hoofs can also be polished if desired.



Removing rough surface with rasp.

Polishing with oiled cloth.

(Fig. 10)

CARE AT SHOW TIME

Every precaution should be taken to prevent the calf from going "off feed" when he is moved to the show. It is a good practice to cut the feed to one-half the regular amount and make the first feed at the show a light one. The calf should be allowed to lie down as much as possible before it is shown. Animals show to better advantage when they are not gaunt, therefore it might be advantageous to give the calf feed and water just before showing.

In the show ring the calf should appear at its best. The showman should watch the judge so as not to be standing between him and the calf. Care should be taken to have the calf stand in the proper position with the head well up and the back level.

RECORD BOOK

The story of this tour will make a very good report for the Record Book. Don't forget any interesting points and tell about the calves you saw.

VII. Round-Up

The great day of your achievement has come when the final Round-up or Show is held. Your work throughout the year will determine to a great extent the way the judge will rate your calf in the show. By far the most interesting part of the program for each member is, "Where will my calf be placed by the judge?" It will be interesting to see how nearly your idea of the calf's placing agrees with that of the judge. If there are questions you would like to ask after the ribbons are tied, don't hesitate to do so as the answers the judge gives you may help you to do better next time.

RECORD BOOK

The Record Book should be entirely completed with the exception of stating the premiums won, which can be added immediately after the showing. These books should be turned over to the Local Leader when the calf is entered in the local show.

CREDIT AND NOTES

A few boys or girls who wish to become baby beef club members may not have the money to pay for their calves at the time the club is organized. They may be able, however, to arrange with their local bank or the man from whom they purchase the calf for credit. In such cases a note bearing the current rate of interest will be required to cover the purchase price. This note should be made so it will come due at the time the project is to close. The note should be signed by the club member and the father or some adult. The note and interest must be paid when the calf is sold.

A blank note can be obtained at the bank and will be similar to this form.

FORM OF NOTE

\$....., MO., 1926
 days after date promise to pay to the
 order of
 Dollars
 for calf purchased by me as member of
 Baby Beef Calf Club County
 with per cent interest from date.
 DUE

(SIGNED).....

Member

(SIGNED).....

Surety

INSURANCE

Boys and girls who invest their money in calves and especially those who give notes for their calves feel that they need to be protected against accidental loss. This protection can be given by insuring the calf against death. There are two ways of doing this, through regular livestock insurance with reputable insurance companies or by a cooperative agreement between the members. The former is usually preferable.

The cooperative plan of insurance requires that a fund be set aside from which losses are to be paid. In order to have sufficient funds to pay all losses each member should pay into the insurance fund one-tenth the original cost of his calf. Where all calves are paid for by notes this amount, one-tenth of the original cost, should be added to the note. This fund is to be used only in payment for the loss of any calf by death. Losses should be paid on the original cost of the calf. Any funds left after all losses are paid are to be prorated back to each member according to the amount he puts into the insurance at the beginning.

SUGGESTIONS FOR ROLL CALL

Below are given a few suggestions that may prove helpful in conducting your meetings. In roll call, each member can take part in the meeting by making a report on some part of the topic suggested, as follows:

1. Name breed of calf member is feeding.
2. Give weight of calf at first of month.
3. Give ration and amounts of each kind of feed fed to calf.
4. Give gain made by calf during the previous month.

PUBLIC DEMONSTRATIONS

In so far as possible, all club members should be instructed in the regular club meetings by the demonstration method. As a usual thing, one or more members of each club can begin giving individual demonstrations at the club meetings.

After two or three months of practical experience in handling calves, mature club members should be able to demonstrate approved practices of beef production. The scope of the team demonstration usually should be limited to some phase of the club work of the current year. A team of two or three of the best demonstrators, according to the number needed, should be selected from the membership of one club, either by mutual consent or by a try-

SCORE CARD FOR JUDGING DEMONSTRATION TEAMS

1. Subject Matter	30
(1) Importance of the subject matter presented and relation to fundamental problems of home or farm.	
(2) Accuracy of statements made in oral presentation and proper methods in doing the work.	
(3) Completeness with reference to the giving of all steps necessary to clear understanding of process.	
(4) Clearness and definiteness of statements made in simple language easily understood.	
(5) Replies to practical questions. Judges' questions only should be considered in team scores. Team should give authority for subject matter presented.	
2. Team Work	20
(1) Preparation, arrangement and use of materials The team will be responsible for the arrangement and preparation of equipment and its use.	
(2) Organization of work, each member in so far as practical to be kept busy with a definite part so that the work and instructions given will proceed without delay, but each member of the team should be able to demonstrate the whole process.	
(3) Appearance and conduct of the team. Appearance and conduct includes the personal appearance of the members, and of the team as a whole. They should be business-like, pleasant and so far as possible, a unit in action and appearance.	
(4) The team member not actually directing the demonstration should re-inforce the point at hand or at least should not detract from the theme of the demonstration.	
3. Skill	20
(1) Ease in procedure.	
(2) Workmanship and efficiency of manipulation.	
(3) Neatness and cleanliness in doing work.	
(4) Speed, system or dispatch.	
4. Results	15
(1) Effect upon the audience, and also upon materials used in the demonstration, as may be shown in the finished product.	
(2) All processes made clear.	
5. Practicability	15
(1) Value of principles given for the home and community.	
(2) Actual club practices shown.	
Total Score	100

out on individual demonstrations. All teams should have an opportunity to demonstrate before the local club group and the people of the home community. The championship team should represent the local club at the county round-up, if one is held.

Suggested Subjects for Individual Demonstrations

- Weighing out and mixing feed.
- Making a halter from rope.
- Treating for lice or bloat.

Suggested Subjects for Team Demonstrations

- Demonstration on grooming for show.
- Demonstration in judging.
- Demonstration of various methods in production of baby beef.

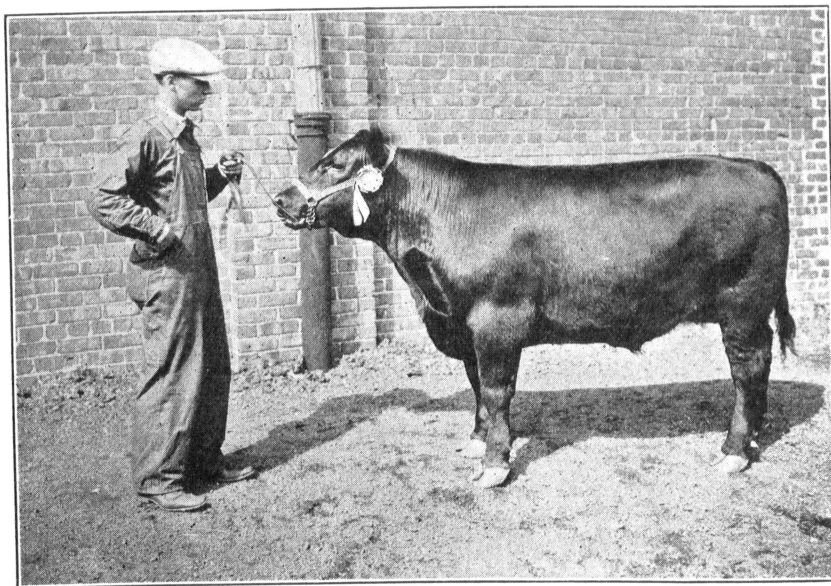


Fig. 11.—The compact, blocky type of calf, regardless of breed, is best for the baby beef club.

SUGGESTED DEMONSTRATION OUTLINE.—PREPARING A BABY BEEF FOR THE SHOW RING

Team.—Three members from one club designated as “A”, “B”, and “C”.

References.—The Baby Beef Club, Boys’ and Girls’ Club Circular, Missouri College of Agriculture, Columbia, Mo.

Equipment Needed.—A beef calf, show halter, brush, rasp, horn scraper, clippers, straight bar curry comb, round curry comb.

steel wool, woolen cloth, stick for showing, small bottle of sheep dip, pail, water, and cake of tar soap.

Time.—Fifteen to thirty minutes.

<p>"A" Speaks "A" leads in giving a spirited club song or yell, or in repeating the 4-H club pledge; gives a brief history of the club; and then introduces his team-mates and himself. "A" explains briefly the process of finishing animals and tells of the need for washing and dressing the calf for the show ring. Explains how to dress and polish horns and feet demonstrated by C.</p>	<p>"B" Assists "B" joins in giving the club song, yell, or pledge. Stands at attention. "B" holds the calf.</p>	<p>"C" Demonstrates "C" joins in giving the club song, yell or pledge. Stands at attention. "C" demonstrates how to dress horns and feet as explained by A.</p>
<p>"A" Demonstrates Demonstrates how to clip head and tail as explained by "B."</p>	<p>"B" Speaks "B" explains how to clip the tail and head of the Angus, (Head of other breeds not clipped) as demonstrated by A."</p>	<p>"C" Assists "C" holds the calf.</p>
<p>"A" Demonstrates Demonstrates mixing dip in water and wetting animal; brushes and demonstrates how to make parallel line curl, as explained by "B."</p>	<p>"B" Speaks Explains method of dressing and use of preparation to make hair smooth (Olive oil and denatured alcohol in equal parts), gives amount of dip used, and explains use of the parallel curl, as demonstrated by "A."</p>	<p>"C" Assists</p>
<p>"A" Assists Holds the calf.</p>	<p>"B" Demonstrates Demonstrates making the wavy curl and brushing the tail as explained by "C."</p>	<p>"C" Speaks Explains briefly the process of making the wavy curl and tells of its use, and tells method of brushing the tail as demonstrated by "B."</p>
<p>"A" Speaks and demonstrates Summarizes the demonstration by showing the animal, calling attention to the improved appearance made in fitting. Explains and demonstrates methods of showing the calf—leading and standing, etc.</p>	<p>"B" Assists Collects tools, equipment, etc.</p>	<p>"C" Assists Collects tools, equipment, etc.</p>
<p>Asks for questions. Leads in giving a club song or yell. Concludes by thanking the audience for its attention.</p>	<p>Answers questions referred to him on topic. Joins in giving a club song or yell. Stands at attention.</p>	<p>Answers questions referred to him on his topics. Joins in giving a club song or yell. Stands at attention.</p>

INDEX

Age	12	Insurance	32
Ailments	25	Kerosene Emulsion	25
Ash	18	Lice	25
Blackleg	25	Linseed Oil Meal	18
Bloating	25	Meetings	4
Bluestone solution	23	Suggested	5
Breeding	12	Mineral Matter	18
Calf, Development	23	Molasses	19
Junior	14	Neck	12
Obtaining	15	Notes	31
Senior	14	Oats	18
Carbohydrates	18	Organization	5
Carcass, Illustration of	13	Parasites	25
Care and Management	21	Pasture	19
Care at Show Time	30	Protein	17
Clipping	29	Quality	12
Concentrates	17	Rations	19
Constitution	12	Record Book ...4, 15, 23, 24, 26,	
Contents	2	30, 31.	
Corn	18	Roughages	17
Credit	31	Round-Up	31
Curling Hair	29	Salt	21
Diagram	10	Score Card	11
Fats	18	Explained	10
Feeding	16	Scours	25
Feed Stuffs	18	Sex	12
Classes of	17	Stock Judging	24, 26
Composition of	17	Suggestions	32, 34, 35
Form	12	Roll Call	32
Fiber	18	Demonstrations	35
Feet	23	Terms Used	9
Hay	19	Tour	26
Head	12	Training of Calf	23
Horns	30	Vaccination	25
Grooming	27	Warbles	25
Grubs	25	Water	21
Introduction	3	Wheat Bran	18