



***Missouri High School Dropout Trends: The Rates  
and the Demographic Context***

***Task Force on Dropout Prevention  
September 29, 2009***

**St. Louis, Missouri**

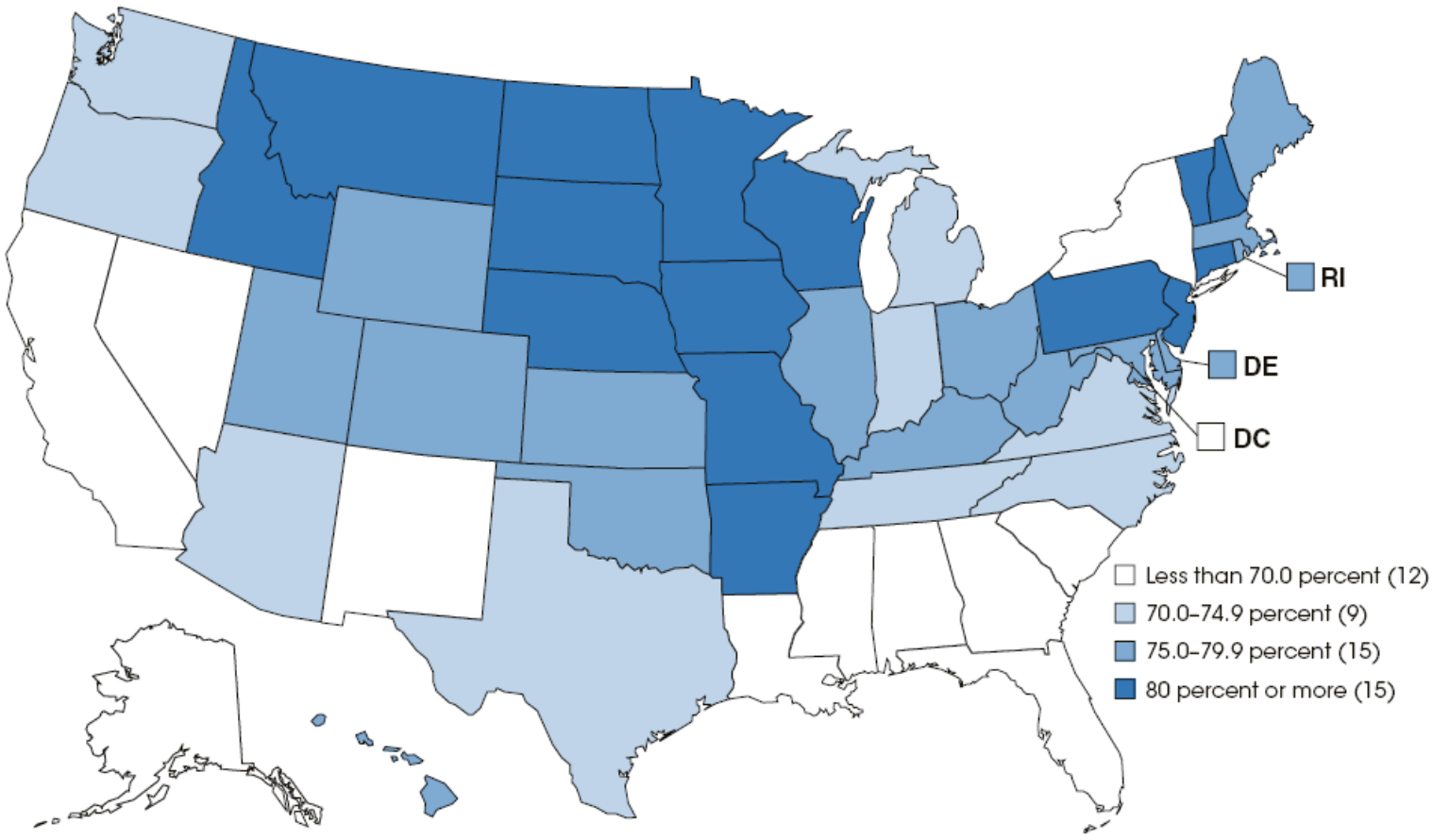
**Bill Elder PhD, Director  
Office of Social & Economic Data Analysis (OSED)**  
**University of Missouri**

- ***Graduation Rates and Dropout Rates***
  - Comparative Context***
  - Disparities***
- ***Social and Demographic Trends and Dropouts***
- ***Economic Trends and Dropouts***
- ***Regional Diversity in Missouri and Dropouts***

# Relative to other states Missouri is among the top 15 in Graduation Rate (81.1%)

**U.S. 73.4%**

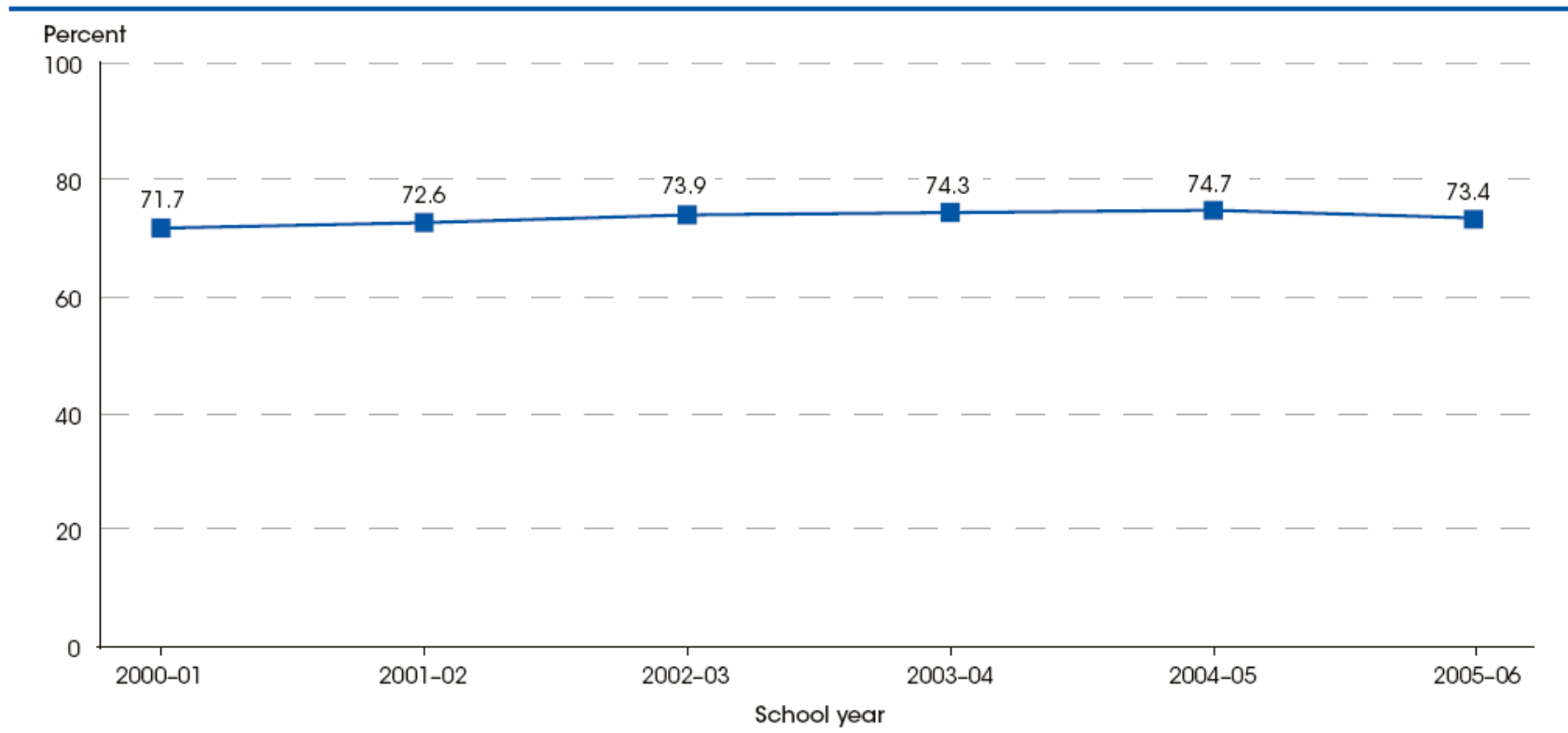
Figure 19-1. Averaged freshman graduation rate for public high school students, by state: School year 2005-06



**Note: Not the 9<sup>th</sup> to 12<sup>th</sup> Grade Cohort Definition**

# Relative to other states Missouri is among the top 15 in Graduation Rate (81.1%)

Figure 19-2. Averaged freshman graduation rate for public high school students: School years 2000-01 through 2005-06



Planty, M., Hussar, W., Snyder, T., Kena, G., KewalRamani, A., Kemp, J., Bianco, K., Dinkes, R. (2009). *The Condition of Education 2009* (NCES 2009-081). National Center for Education Statistics, Institute of Education Sciences, U.S. Department of Education. Washington, DC.

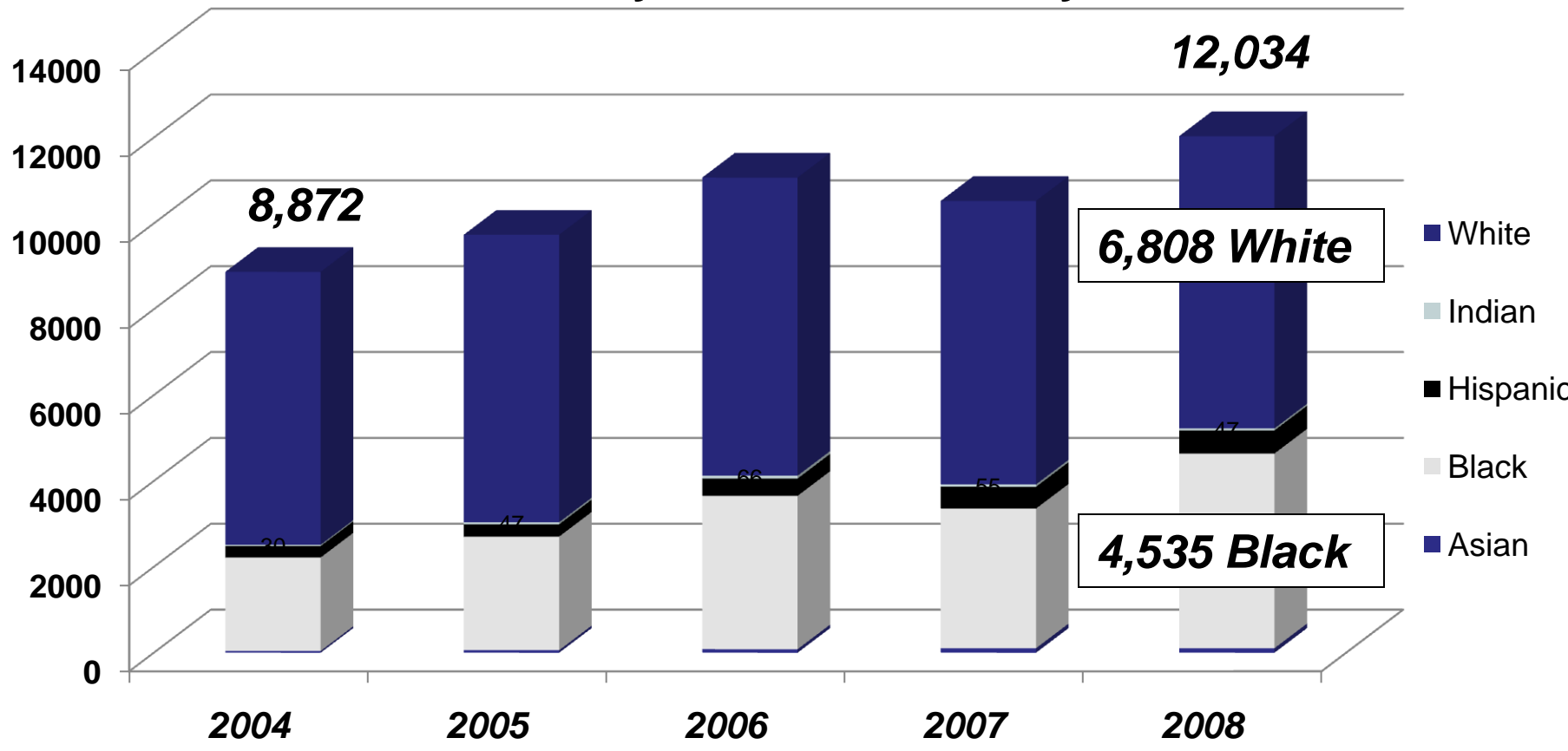
**American Community Survey, 2007**

***Educational Attainment***

<b>Population 25 years and over Percent with ....</b>	<b>U.S.</b>	<b>MO.</b>
<b>Less Than High school graduate</b>	<b>16</b>	<b>15</b>
<b>High school graduate or higher</b>	<b>84</b>	<b>85</b>
<b>Bachelor degree or higher</b>	<b>27</b>	<b>24</b>

**The Number of Missouri High School Dropouts Increased by 3,162 or 36% from 2004 to 2008**

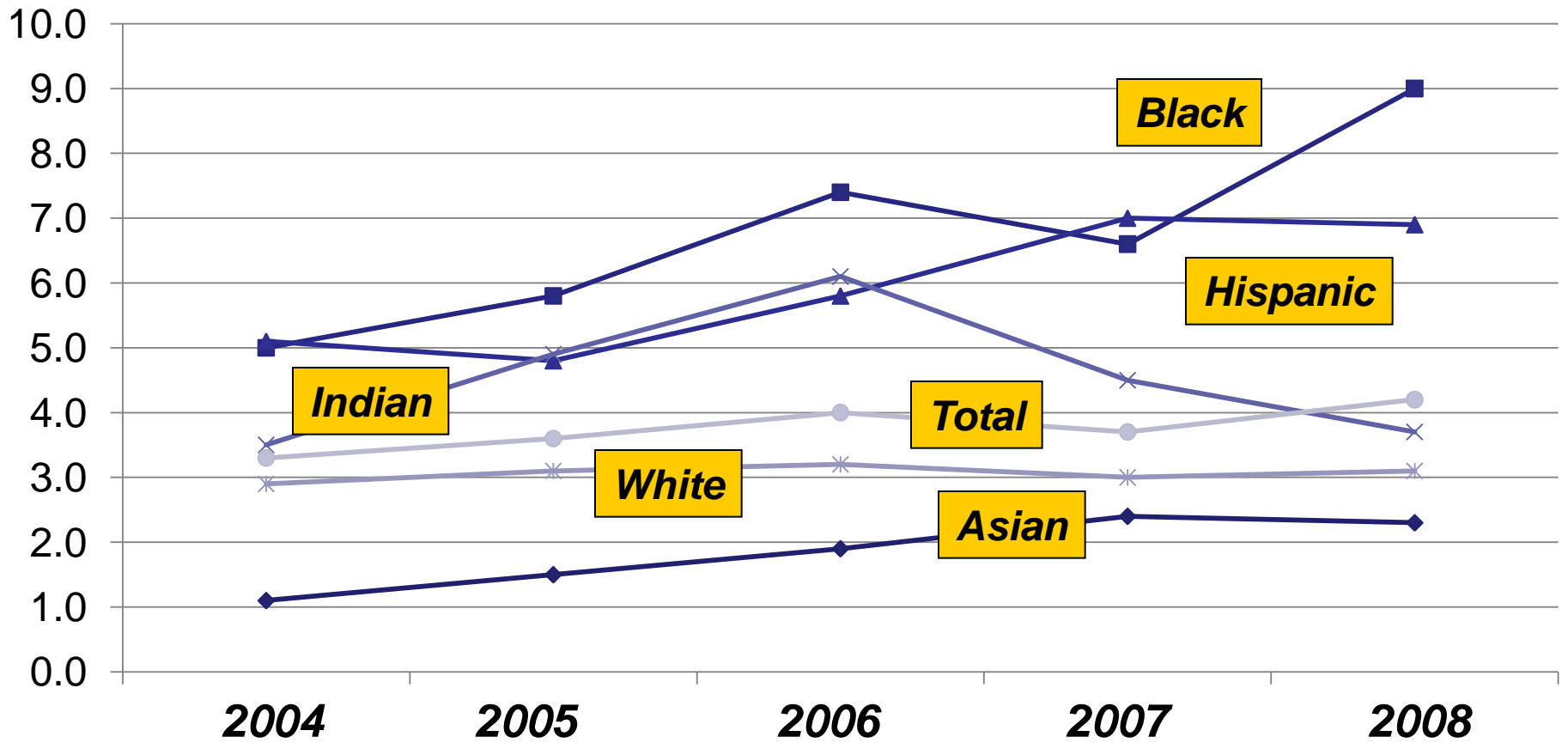
**Missouri High School Dropouts  
2004-2008 By Race and Ethnicity**



Source: DESE, 2009 School Data

**Overall, Missouri rates increased modestly. Black & Hispanic rates are higher and increasing**

### Missouri High School Annual Dropout Rate 2004-2008 by Race and Ethnicity



**Fifteen Percent of Missouri High School students (cohorts) do not graduate. Racial and Ethnic Disparities Persist**

**Missouri Graduation Rates by Race and Ethnicity, 2004-2008**

<i>Year</i>	<b>2004</b>	<b>2005</b>	<b>2006</b>	<b>2007</b>	<b>2008</b>
<b>Total Number of Graduates</b>	58,040	57,838	58,435	60,200	61,752
<b>Graduation Rate</b>	85.6	86.0	85.8	86.3	<b>85.2</b>
<b>Asian</b>	93.7	94.6	94.7	94.1	<b>92.2</b>
<b>White</b>	87.4	87.6	87.8	88.2	<b>88.3</b>
<b>American Indian</b>	84.8	83.9	81.4	81.0	<b>83.4</b>
<b>Hispanic</b>	77.7	81.6	80.6	80.7	<b>77.5</b>
<b>Black</b>	76.5	77.5	76.0	77.2	<b>72.2</b>

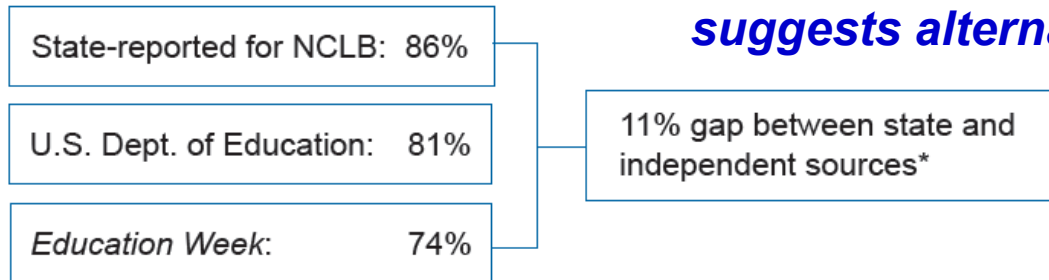
[Source: Missouri Dept. of Elementary and Secondary Education](#)



## ***Dropout Reporting Issues: Are Rates Really Higher?***

- News analyses from around the country..***
- Grade range issues***
- Impact of federal reporting requirements***

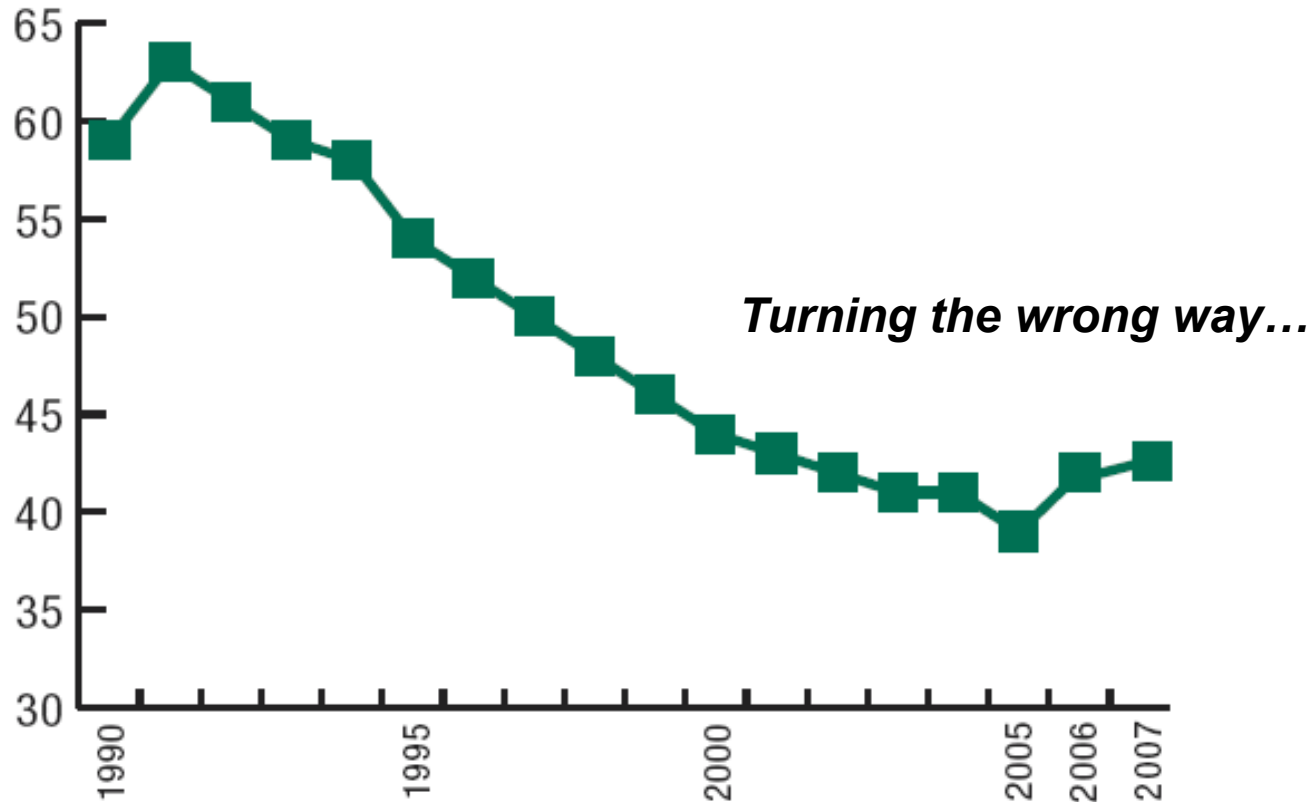
***Alliance for Excellent Education  
suggests alternative measures...***



***Overall, DESE has the best data and  
it is improving ...Missouri's New student  
tracking system***

# Critical Social and Demographic Factors

## Teen Birth Rates, 1990-2007

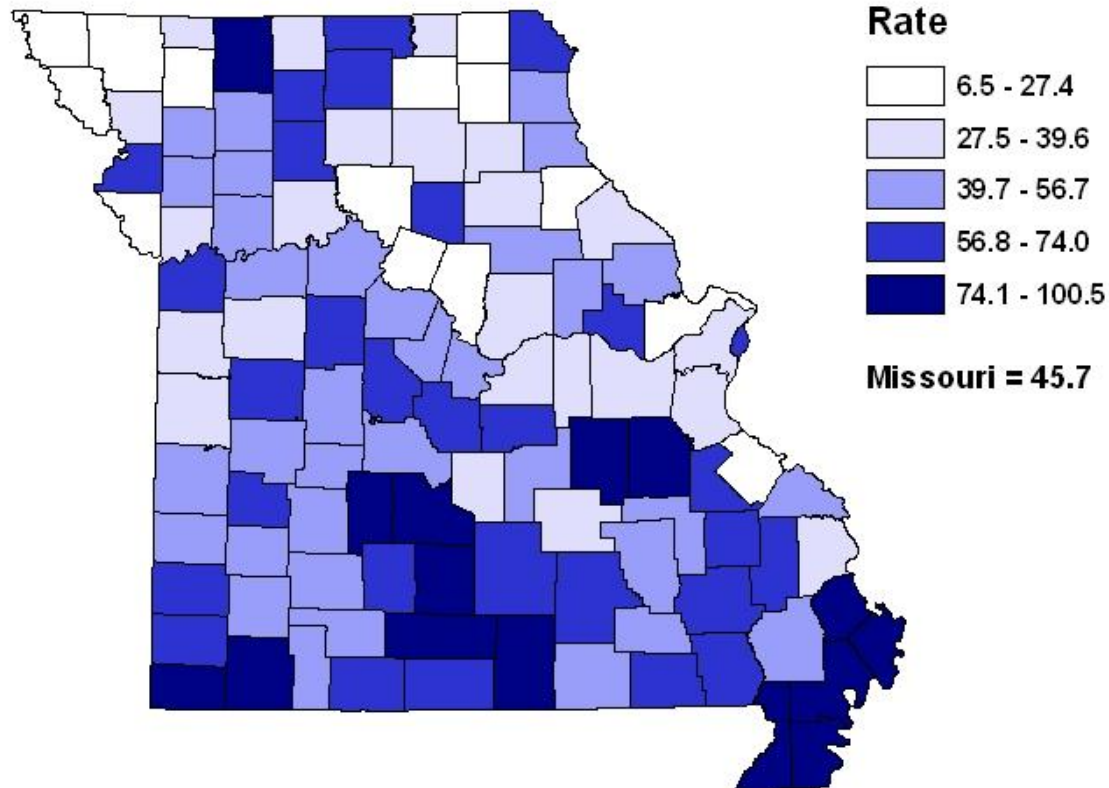


Source: National Vital Statistics Reports, National Center for Health Statistics, 2002 and 2009.



# Socially and Geographically Diverse Challenge

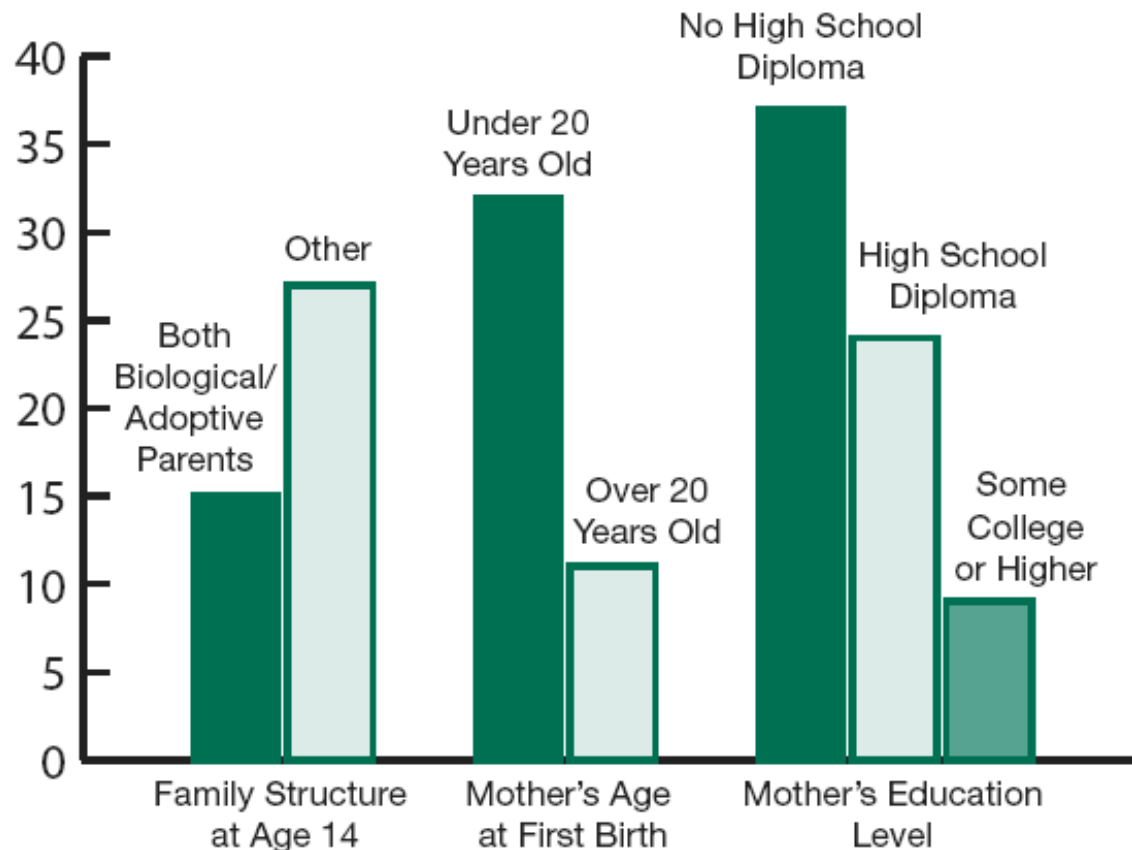
## Births to Teens 15-19 per 1,000 Females 15-19 by County, 2007



Source: Missouri Department of Health and Senior Services  
Prepared by: University Outreach and Extension, Office of Social and Economic Data Analysis - (OSEDA)  
Map Generated on 11.08.2008

# Profound interrelationships with education and poverty

## Probability of First Birth by Age 20, 2002



Source: Vital Statistics Reports, National Center for Health Statistics, 2004.

TRENDS<sup>®</sup>  
Child RESEARCH BRIEF

Publication #2009-10

4301 Connecticut Avenue, NW, Suite 350, Washington, DC 20008

Phone 202-572-6000 Fax 202-362-8420 [www.childtrends.org](http://www.childtrends.org)

***Ten Reasons to Still Keep the Focus on Teen Childbearing***

By Emily Holcombe, B.A., Kristen Peterson, B. A., and Jennifer Manlove, Ph.D.

March 2009

*Adolescent mothers have high probabilities of raising their children in poverty. **More than 40 percent of teenage moms report living in poverty at age 27** (Moore et al. 1993).*

*The rates are especially high among black and Hispanic adolescent mothers, **more than half of whom end up in poverty***

# America's Perfect Storm

*Three Forces Changing Our Nation's Future*

- Divergent skill distributions
- The changing economy
- Demographic shifts



***Educational Testing Service***

***[www.ets.org](http://www.ets.org)***

# America's Perfect Storm

*Three Forces Changing Our Nation's Future*

- *Divergent skill distributions*
  - Flat NAEP scores
  - High school graduation slacking
  - Poor literacy and math skills
  - Race and ethnic gaps



# America's Perfect Storm

*Three Forces Changing Our Nation's Future*

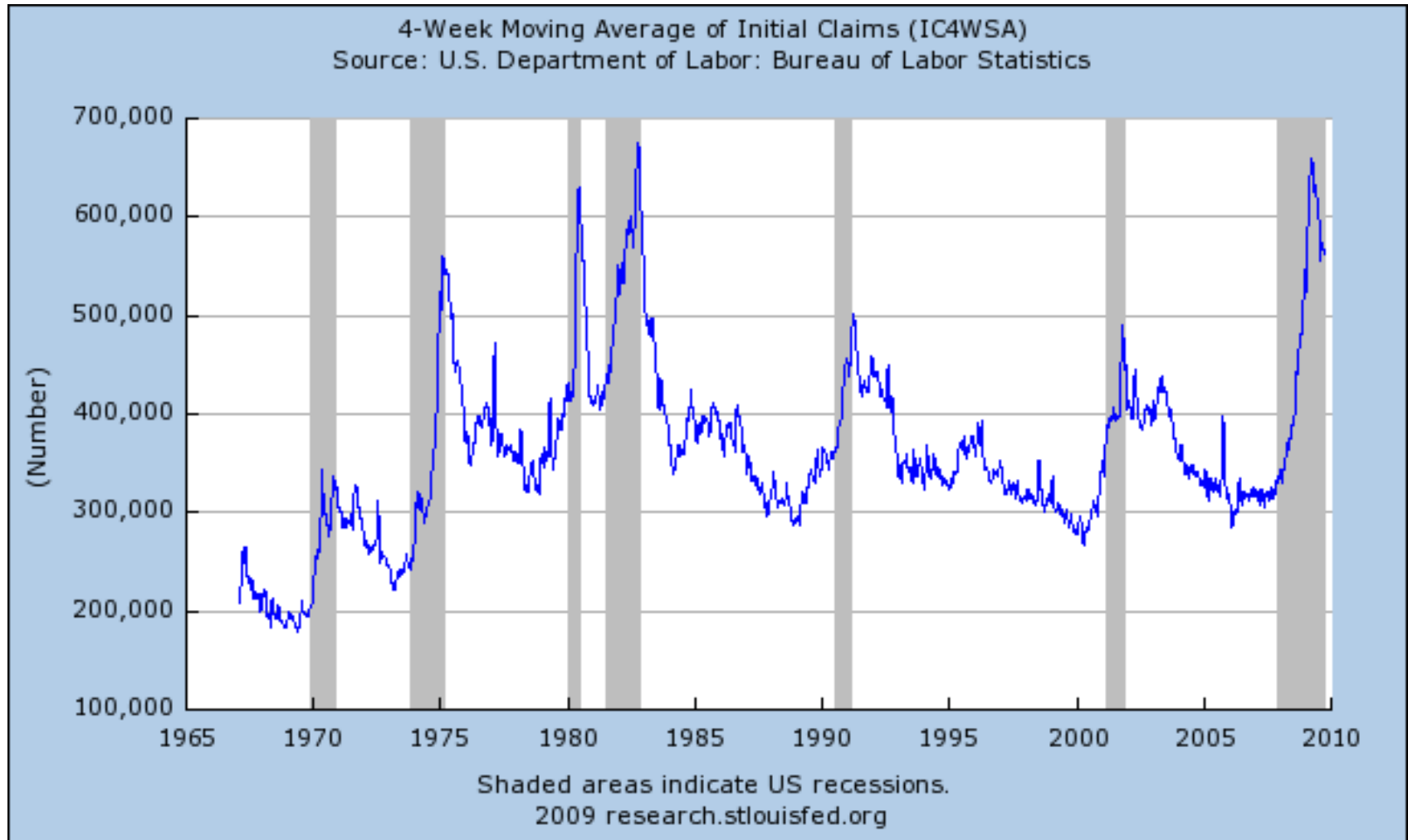
- *The changing economy*
  - Declining manufacturing – more service
  - Two thirds of job growth has been associated with college-level jobs
  - College grads earn 51% more than H.S. grads
  - Earning premiums reward education & skill

# America's Perfect Storm

*Three Forces Changing Our Nation's Future*

- *Demographic shifts*
  - Labor force will grow more slowly
  - Impact of the ***baby boom..***
  - Dependence on ***International migration***
  - Increasing Hispanic population – with lower levels of educational attainment

# Challenging Times....



# Challenging Times.... In Missouri





How ***flat*** the world is depends on where your standing..and how well prepared you are.....

- ***The World is Flat – “new oil wells”***  
-- Thomas Friedman
- ***Making Globalization Work***  
-- Joseph Stiglitz

## ***The New Sputnik***

***Thomas Friedman***

***New York Times – September 26, 2009***

*And when China decides it has to go green out of necessity, watch out....*

*You will buy your next electric car, solar panels, batteries and energy-efficiency software from China.*

*I believe this Chinese decision to go green is the 21st-century equivalent of the Soviet Union's 1957 launch of Sputnik*

*Who will get the  
**Green Jobs**  
of the future?*

# Large Competitive Shifts

## Change in Population By State 2000 – 2008

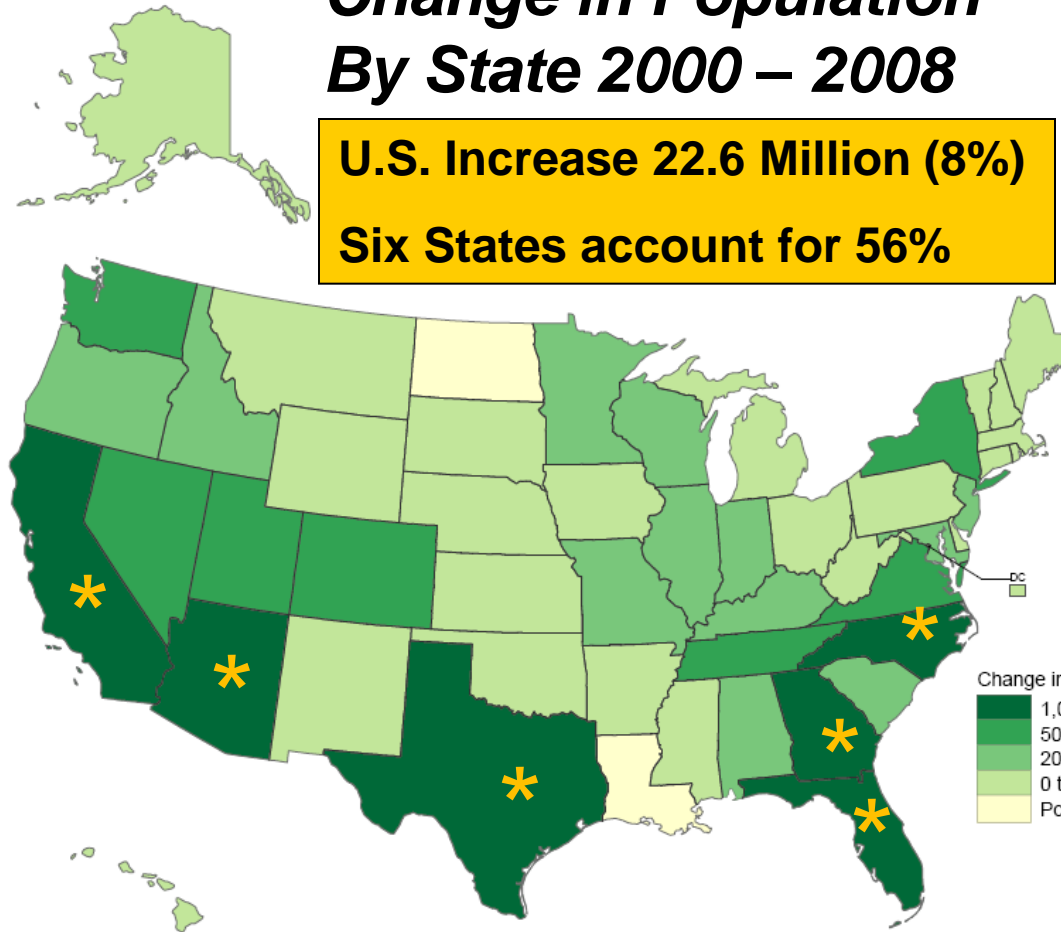
**U.S. Increase 22.6 Million (8%)**  
**Six States account for 56%**

**Total Population 2008**

**World: 6.8 Billion**

**U.S.: 304 Million**

**Mo.: 5,911,605**



**Missouri 5.6%**

**314,927**

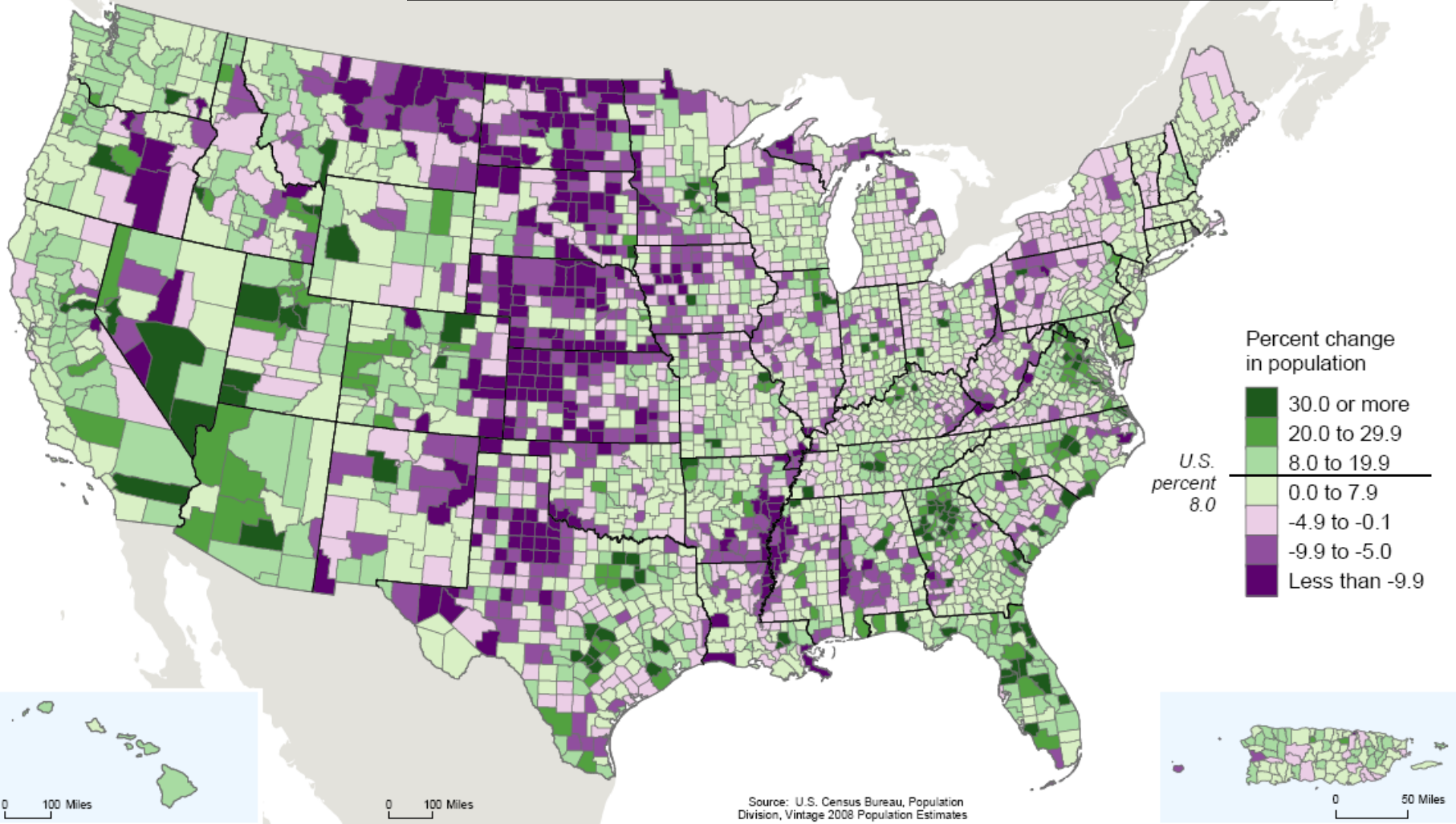
Source: U.S. Census Bureau, Population Division, 2008



# Large Competitive Shifts ....

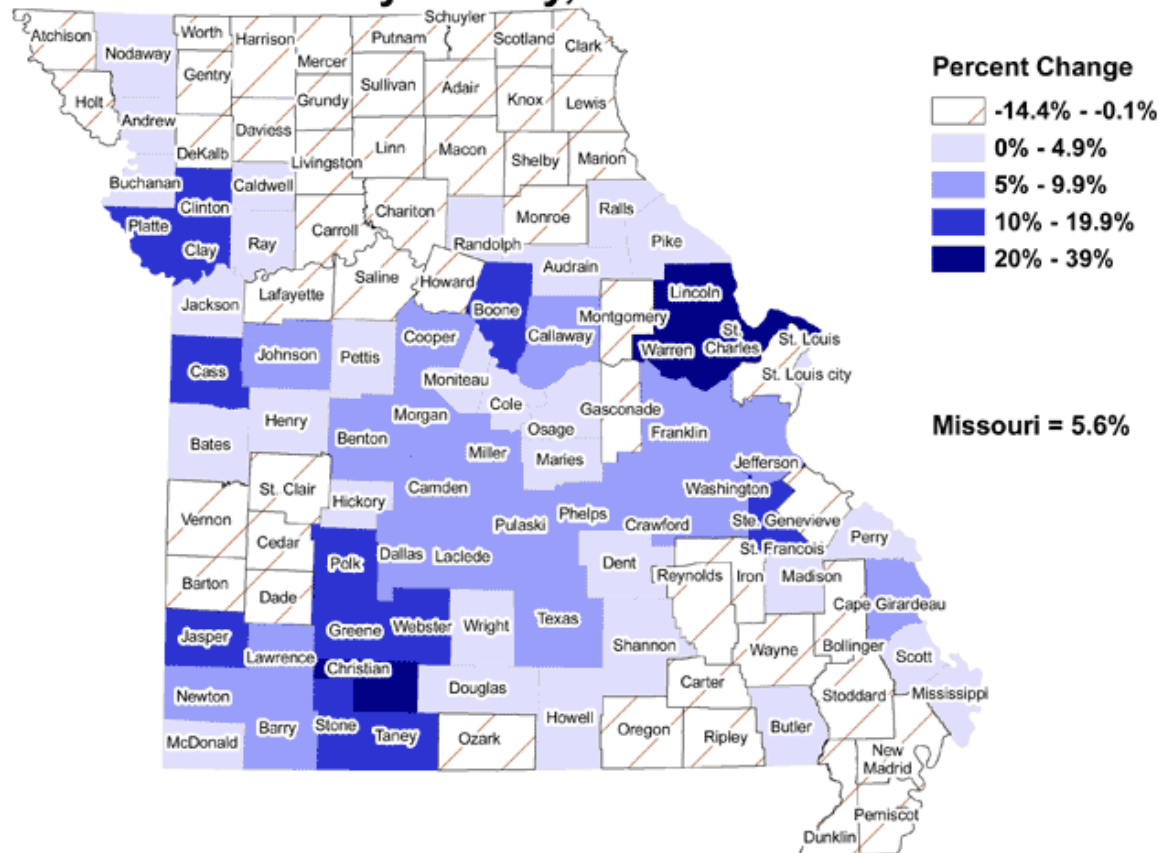
## Percent Change in Population for Counties and Puerto Rico Municipios: April 1, 2000 to July 1, 2008

*The Trends are Diverse: Regions within Regions*



# Regionally Diverse Opportunities for Growth and Development

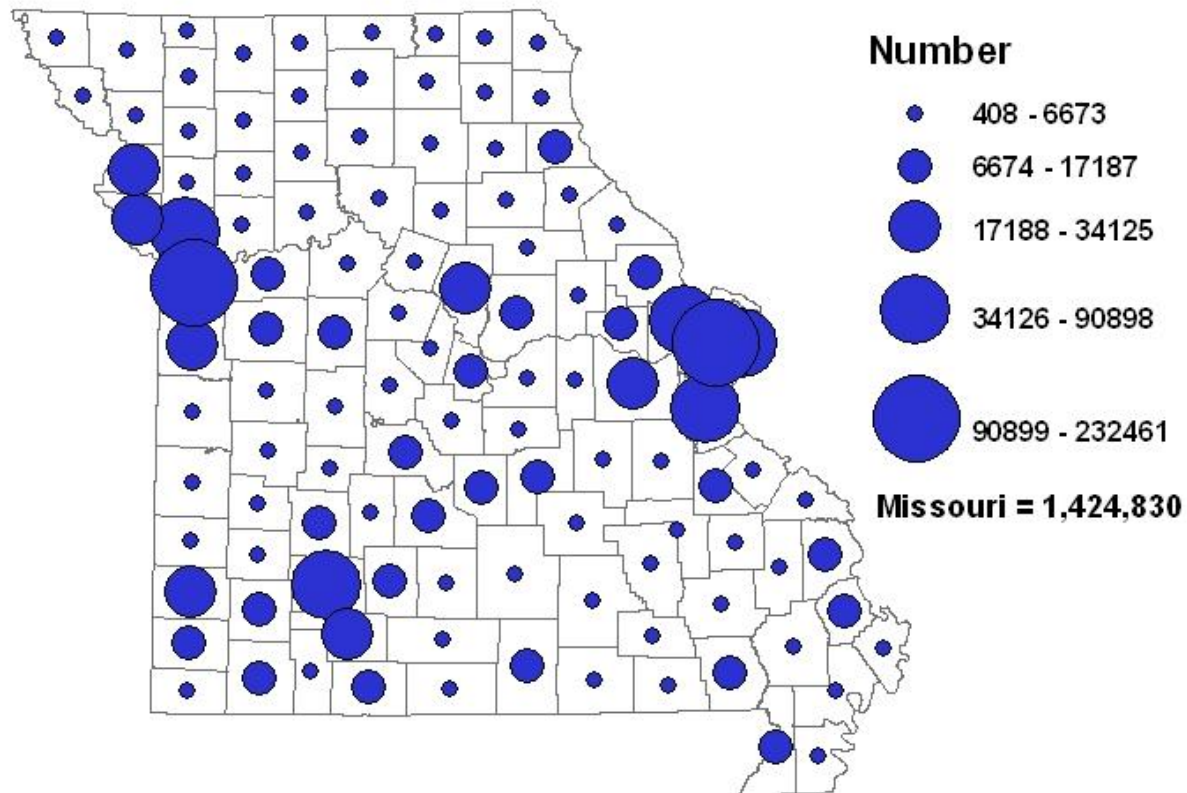
## Percent Change in Missouri Population by County, 2000-2008



Source: USDC, Bureau of the Census, Federal State Cooperative for Population Estimates, 2008  
 Prepared by: University of Missouri Extension, Office of Social and Economic Data Analysis (OSEDA)  
 Map Generated on: 02 Apr 2009

# Regionally Diverse Opportunities for Growth and Development

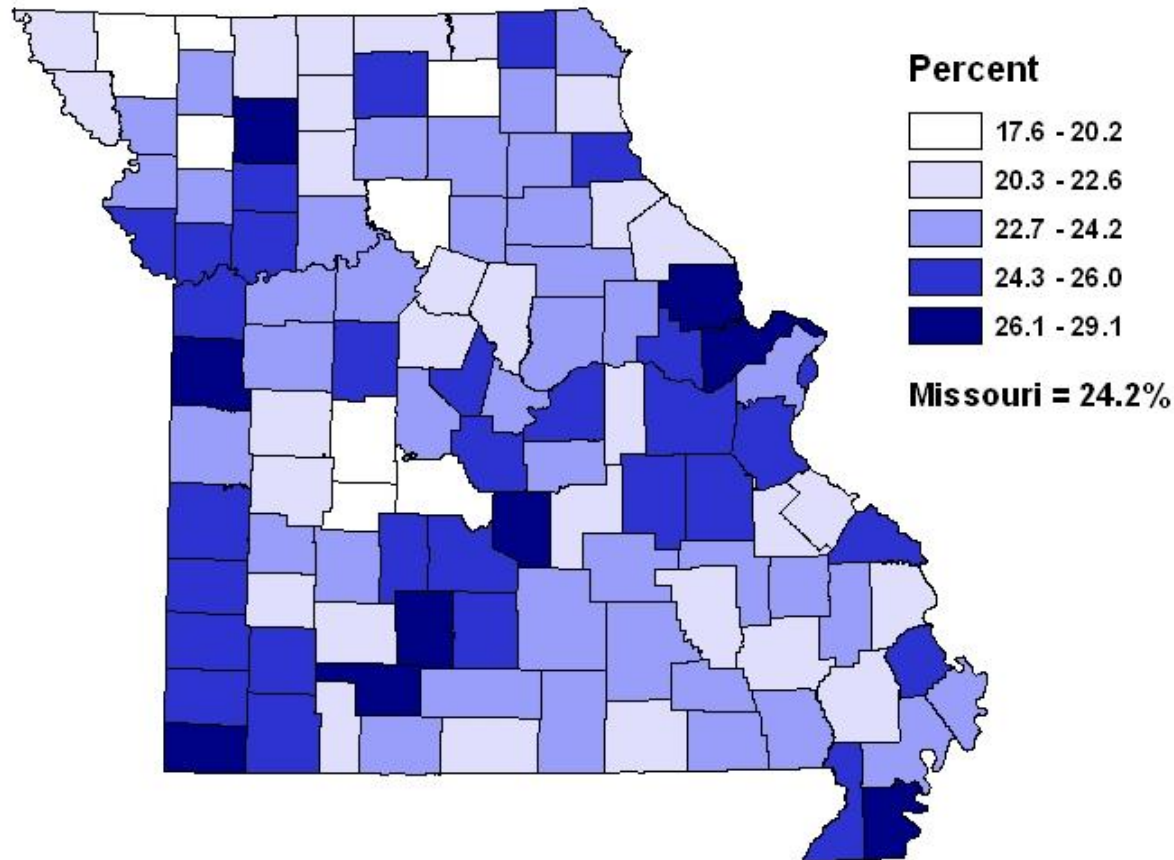
## Child Population Under 18 by County, 2007



Source: Missouri Office of Administration, Budgeting and Planning  
Prepared by: University Outreach and Extension, Office of Social and Economic Data Analysis - (OSEDA)  
Map Generated on 11.08.2008

# Regionally Diverse Opportunities for Growth and Development

## Child Population Under 18 as a Percent of Total Population by County, 2007

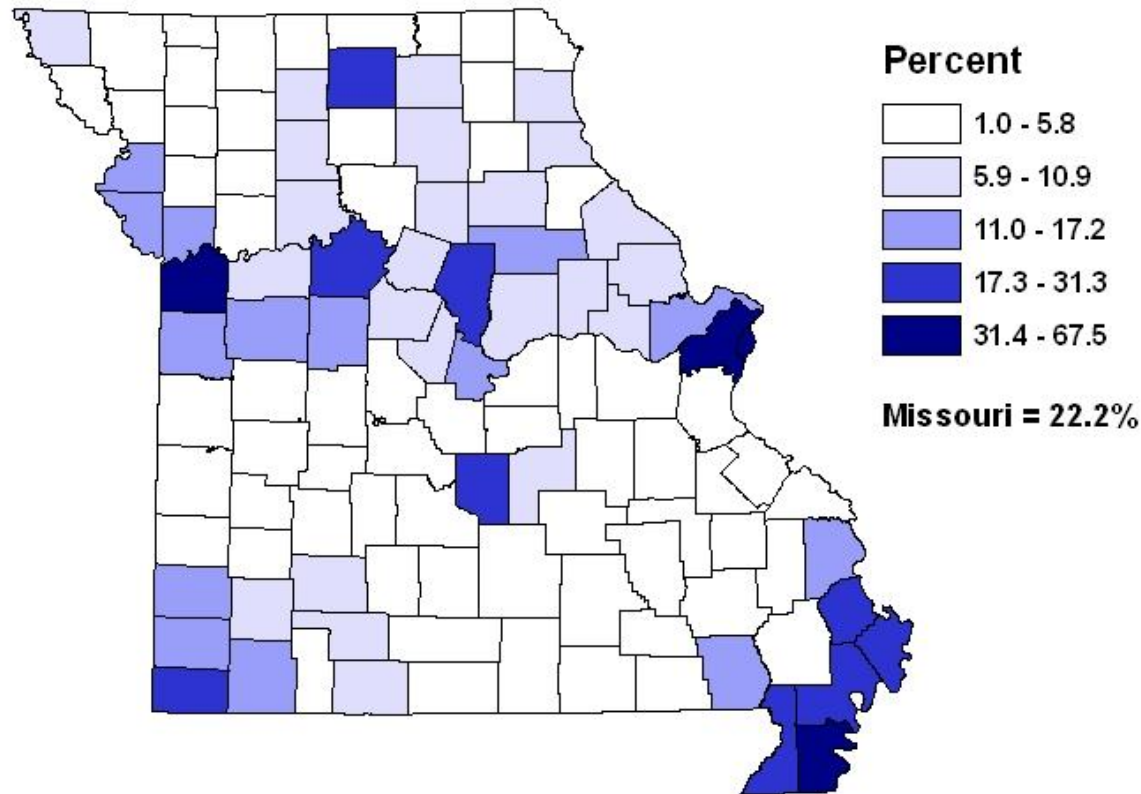


Source: Missouri Office of Administration, Budget and Planning  
Prepared by: University Outreach and Extension, Office of Social and Economic Data Analysis - (OSEDA)  
Map Generated on 11.17.2008



# Regionally Diverse Opportunities for Growth and Development

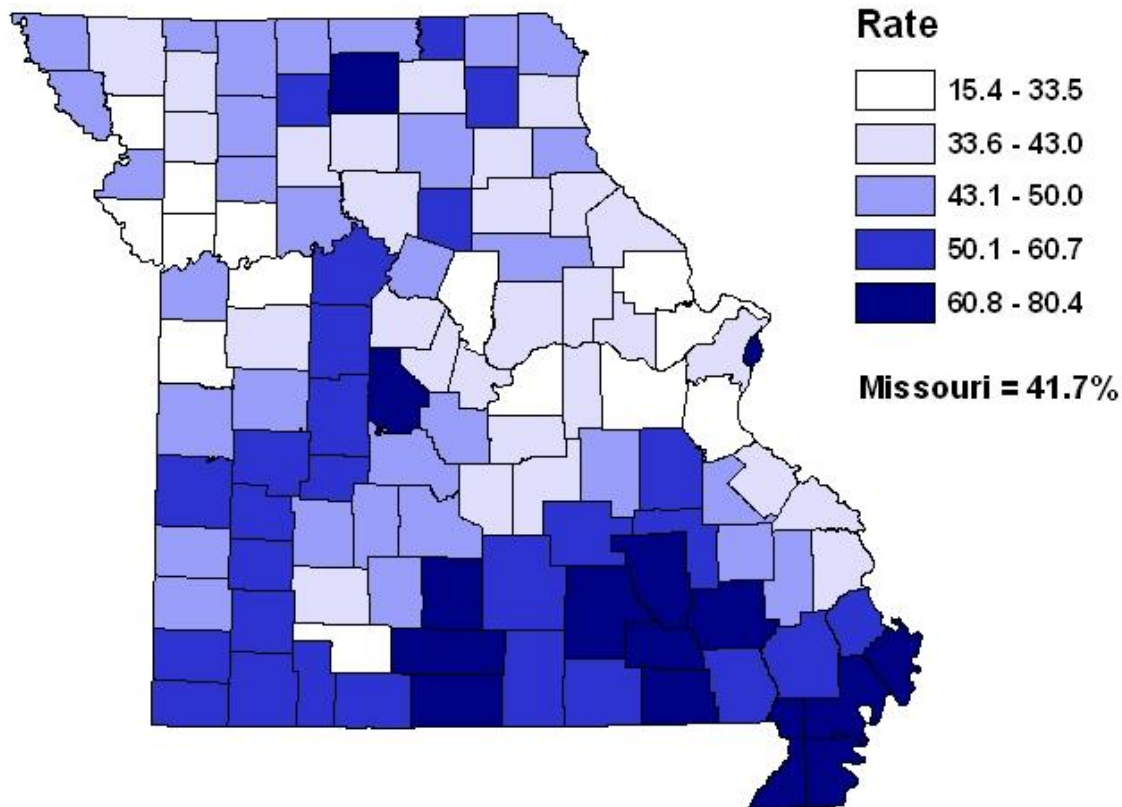
## Percent Minority Child Population Under 18 as a Percent of Total Population by County, 2007



Source: Missouri Office of Administration, Budgeting and Planning  
Prepared by: University Outreach and Extension, Office of Social and Economic Data Analysis - (OSEDA)  
Map Generated on 11.08.2008

# Regionally Diverse and Persistent Challenges

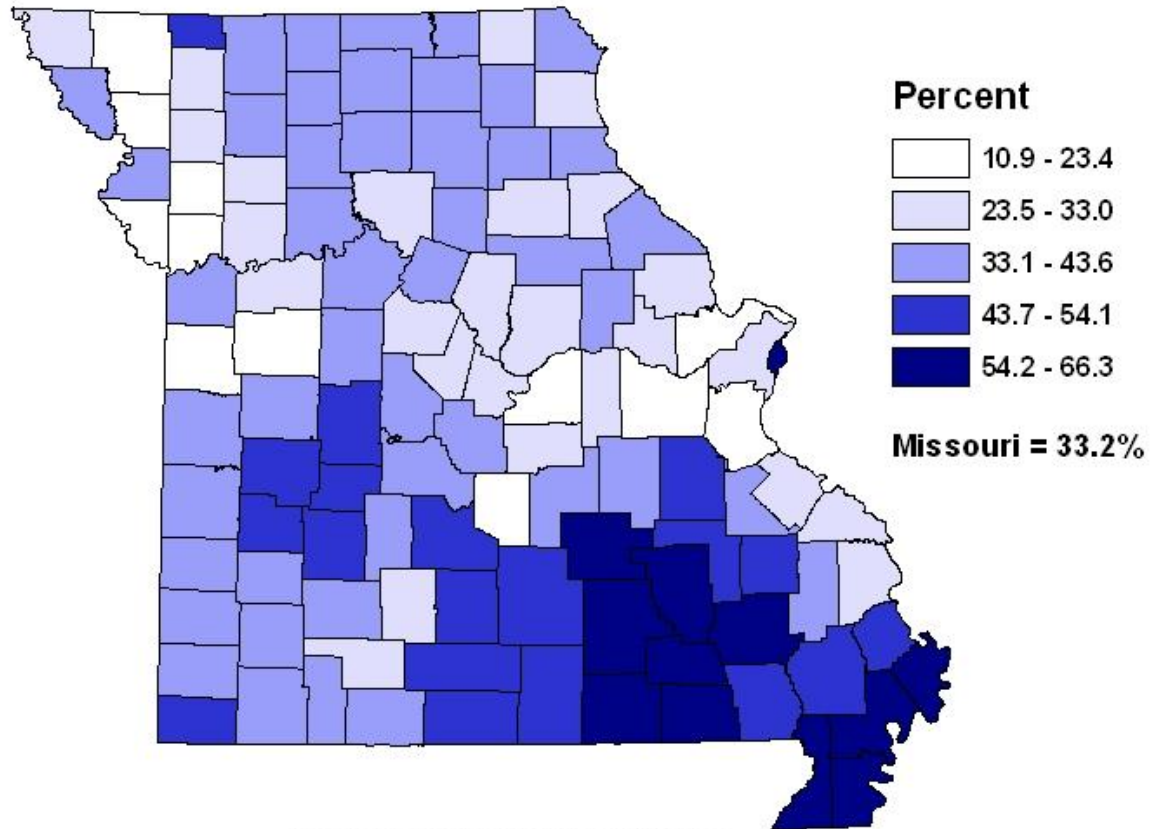
## Percent Students Enrolled for Free and Reduced Lunches by County, 2007



Source: Missouri Department of Elementary & Secondary Education  
Prepared by: University Outreach and Extension, Office of Social and Economic Data Analysis - (OSEDA)  
Map Generated on 11.03.2008

# Regionally Diverse and Persistent Challenges

## Percent Children Receiving Medicaid/MC+ by County, 2007

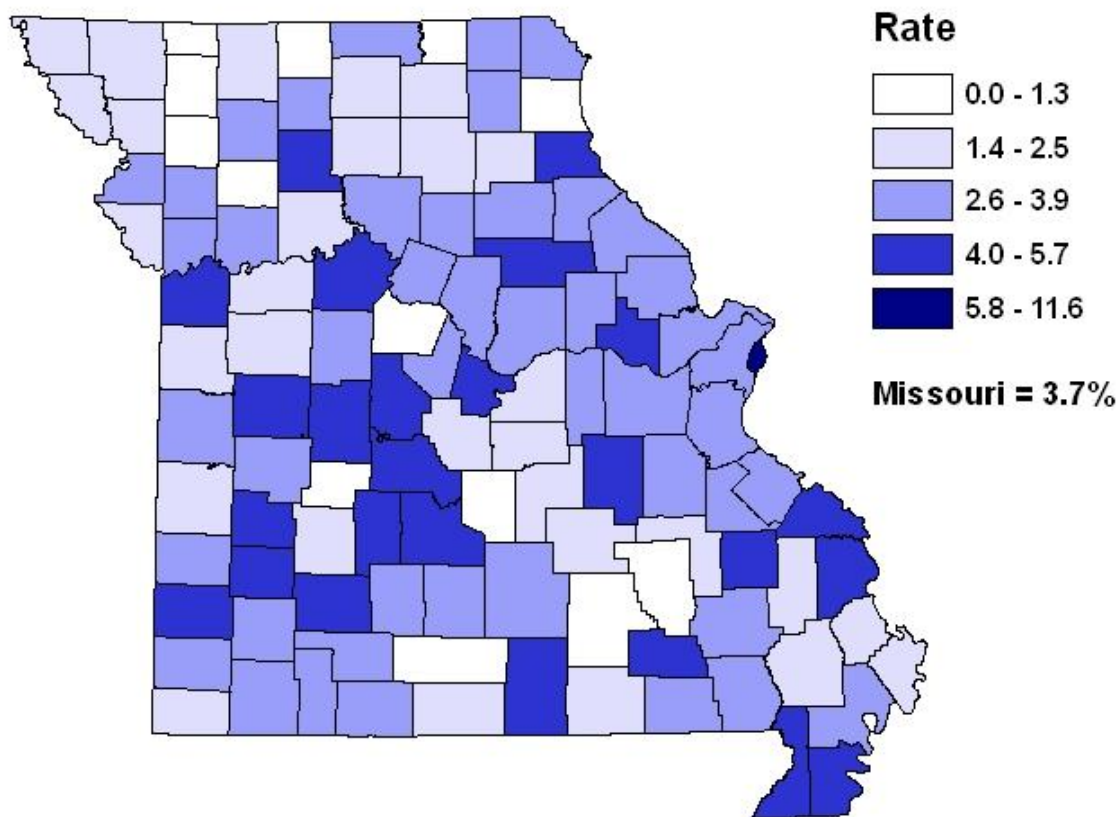


Source: Missouri Department of Social Services  
Prepared by: University Outreach and Extension, Office of Social and Economic Data Analysis - (OSED A)  
Map Generated on 11.17.2008



# Regionally Diverse and Persistent Challenges

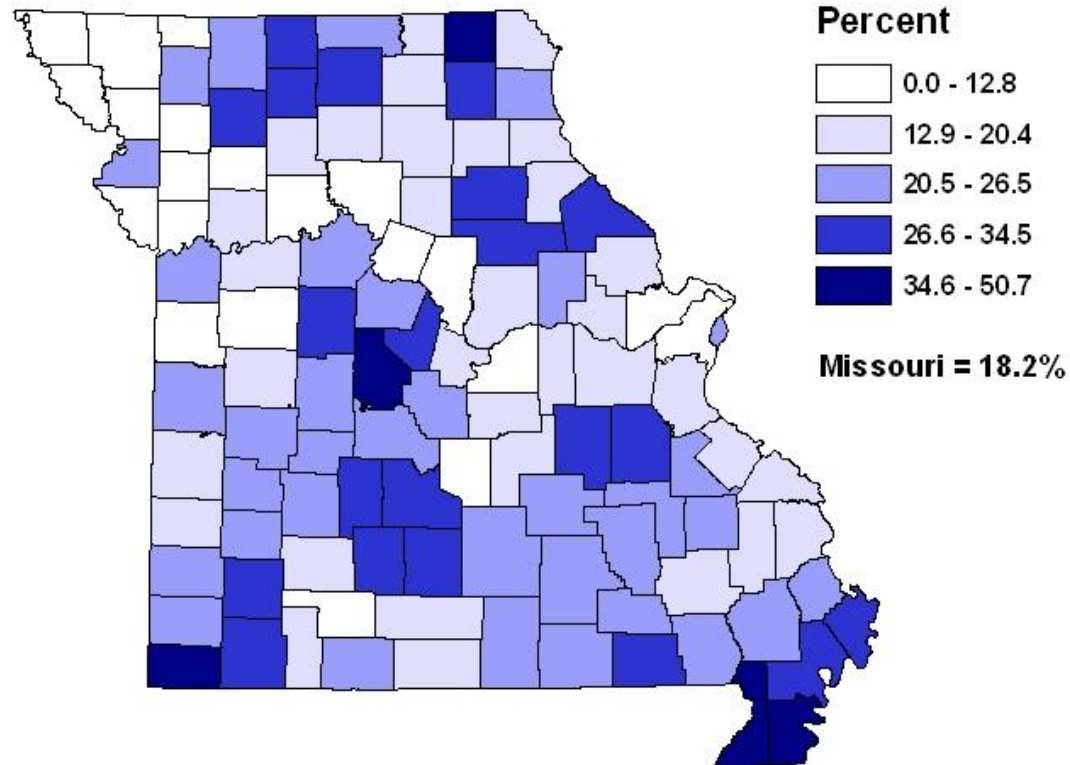
## Annual High School Dropout Rate by County, 2007



Source: Missouri Department of Elementary & Secondary Education  
Prepared by: University Outreach and Extension, Office of Social and Economic Data Analysis - (OSEDA)  
Map Generated on 11.08.2008

# Regionally Diverse and Persistent Challenges

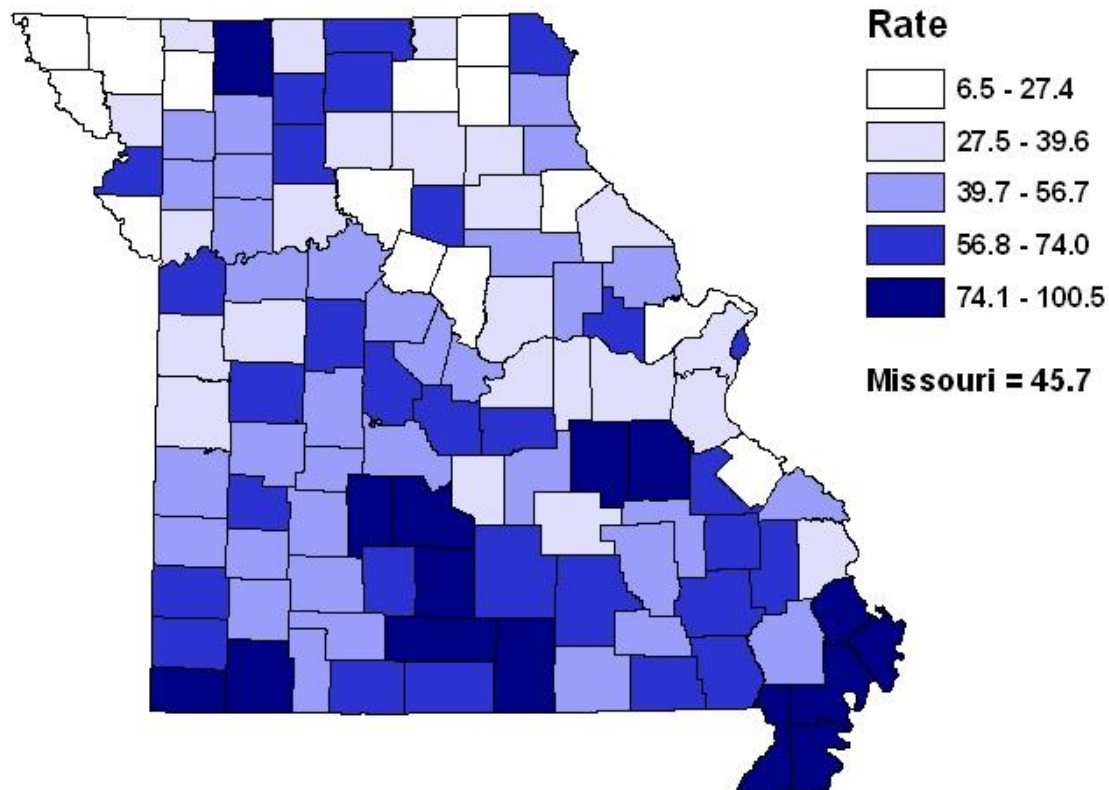
## Percent of Births to Mothers with Fewer Than 12 Years Education by County, 2007



Source: Missouri Department of Health and Senior Services  
Prepared by: University Outreach and Extension, Office of Social and Economic Data Analysis - (OSEDA)  
Map Generated on 11.03.2008

# Regionally Diverse and Persistent Challenges

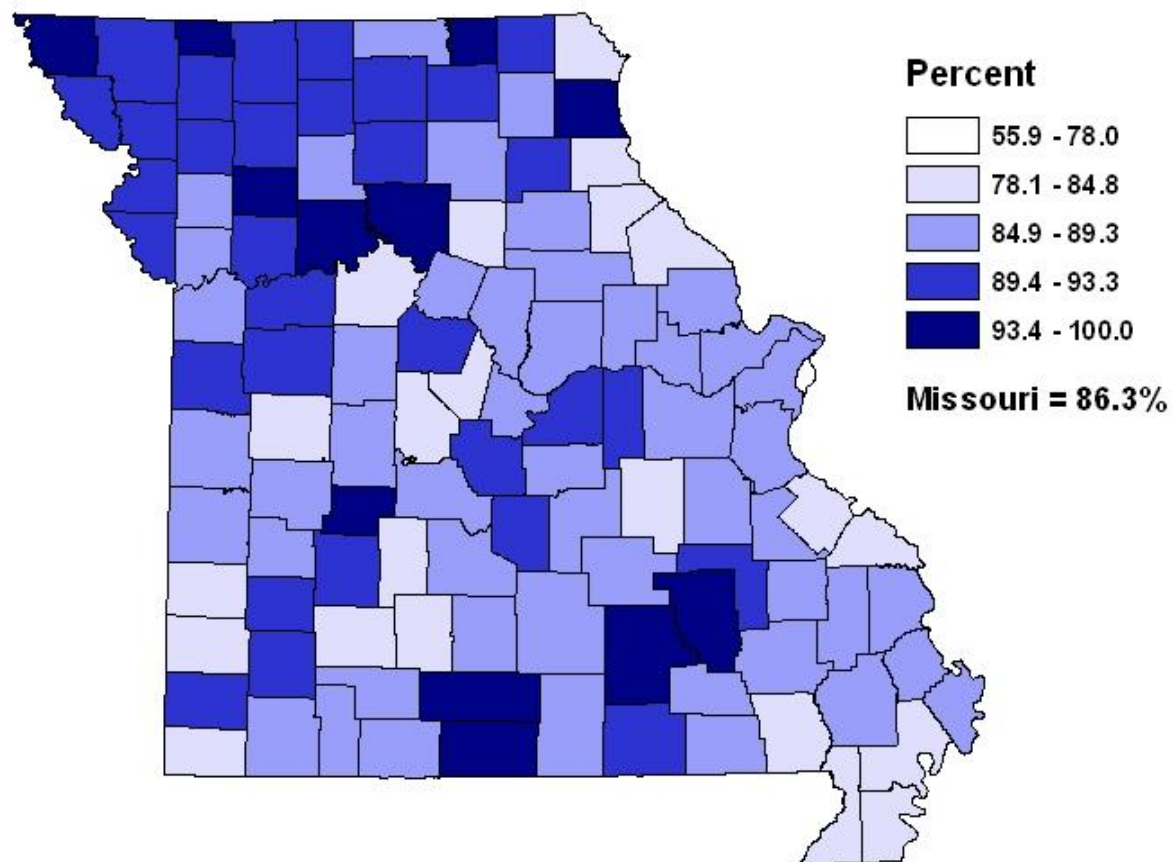
## Births to Teens 15-19 per 1,000 Females 15-19 by County, 2007



Source: Missouri Department of Health and Senior Services  
Prepared by: University Outreach and Extension, Office of Social and Economic Data Analysis - (OSEDA)  
Map Generated on 11.08.2008

# Regionally Diverse and Persistent Challenges

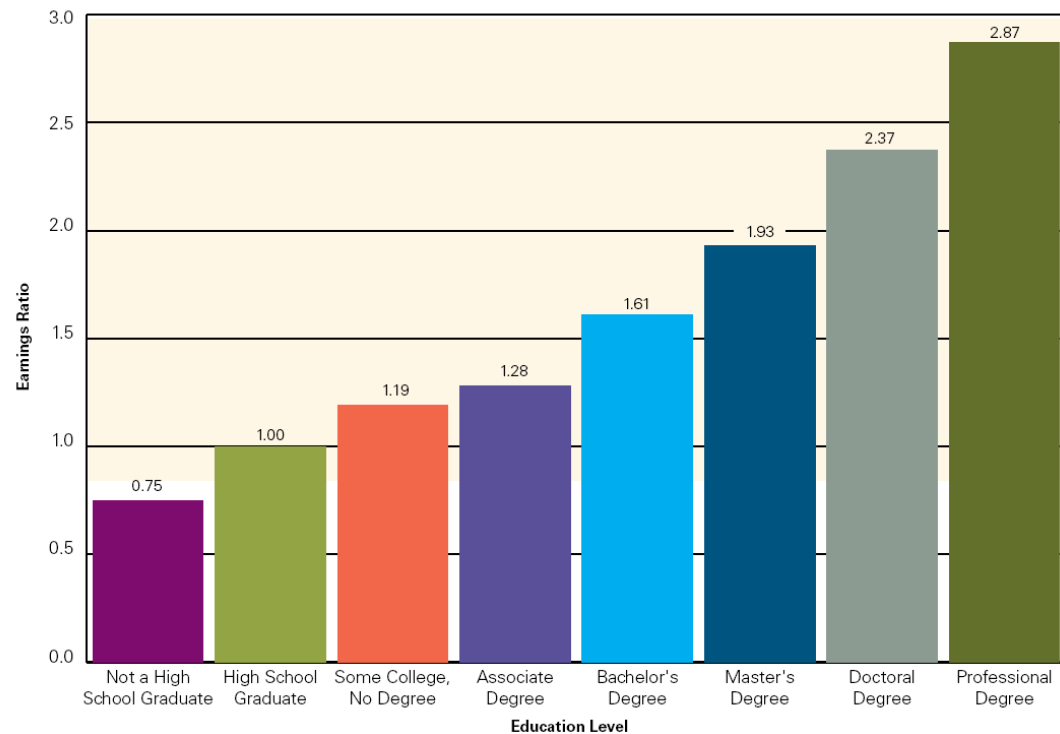
## Graduation Rate, 2007



Source: Department of Health and Senior Services  
Prepared by: University Outreach and Extension, Office of Social and Economic Data Analysis - (OSEDA)  
Map Generated on 11.17.2008

## Financial Benefits to the Individual

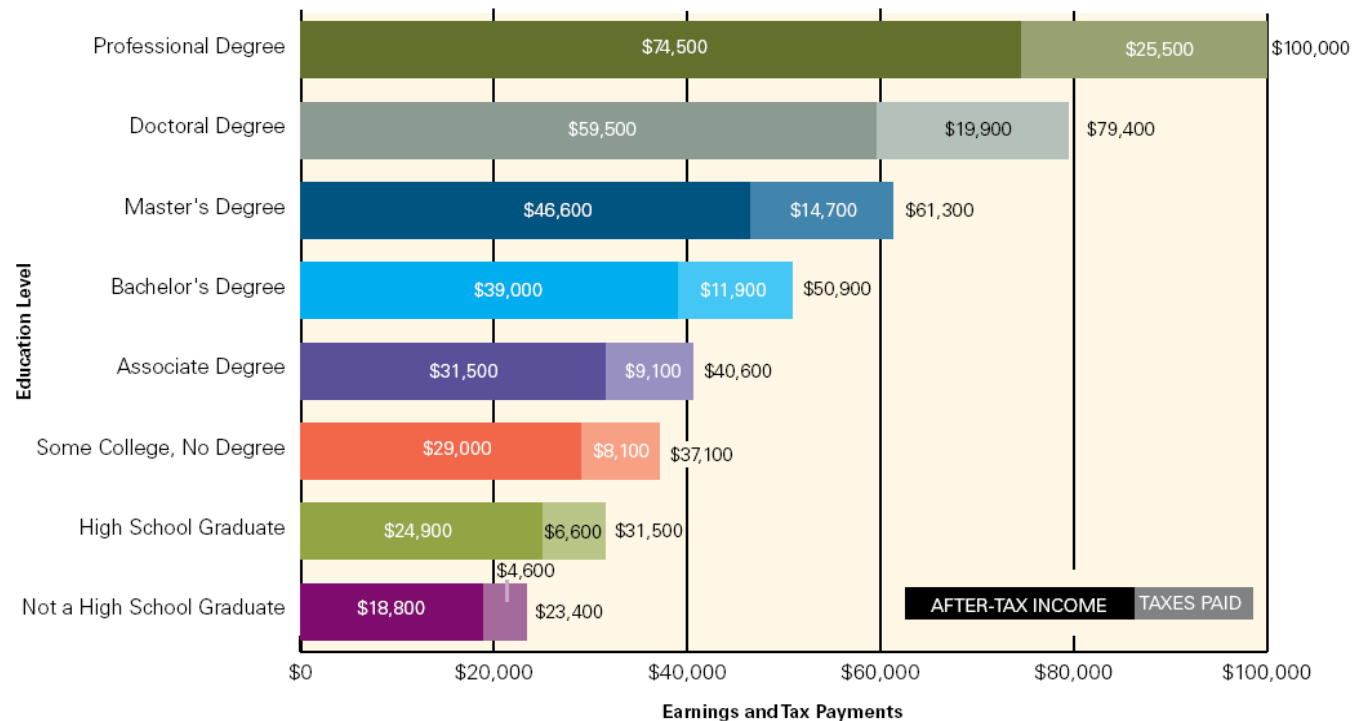
**Figure 1.2:** Expected Lifetime Earnings Relative to High School Graduates, by Education Level



Notes: Based on the sum of median 2005 earnings from ages 25 to 64 for each education level. Future earnings are discounted using a 3 percent annual rate to account for the reality that, because of forgone interest, dollars received in the future are not worth as much as those received today.  
Sources: U.S. Census Bureau, 2006, PINC-03; calculations by the authors.

## Education, Earnings, and Tax Payments

**Figure 1.1:** Median Earnings and Tax Payments of Full-Time Year-Round Workers Ages 25 and Older, by Education Level, 2005



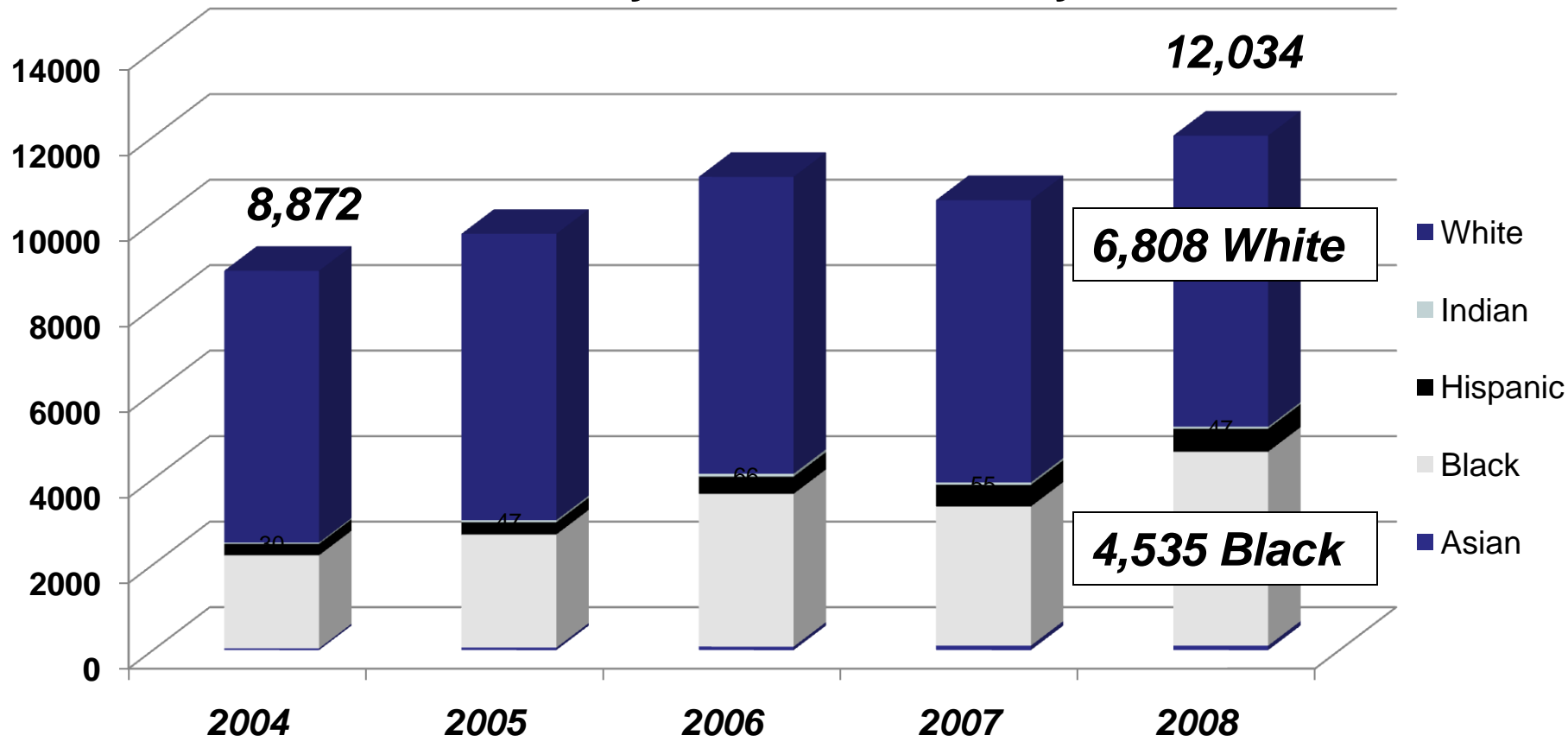
**Note:** Taxes paid include federal income, Social Security, and Medicare taxes, and state and local income, sales, and property taxes.

**Sources:** U.S. Census Bureau, 2006, PINC-03; Internal Revenue Service, 2006; McIntyre et al., 2003; calculations by the authors.

*The bars in this graph show median earnings at each education level. The lighter segments represent the average federal, state, and local taxes paid at these income levels. The darker segments show after-tax income.*

# The Number of Missouri High School Dropouts Increased by 3,162 or 36% from 2004 to 2008

## Missouri High School Dropouts 2004-2008 By Race and Ethnicity



Source: DESE, 2009 School Data



***Missouri High School Dropout Trends: The Rates  
and the Demographic Context***

***Task Force on Dropout Prevention  
September 29, 2009***

**St. Louis, Missouri**

**Bill Elder PhD, Director  
Office of Social & Economic Data Analysis (OSED)**  
**University of Missouri**



# Data Tables...

**Missouri High School Dropouts and Rates by Race and Ethnicity, 2004-2008**

Year	Race/Ethnicity	2004	2005	2006	2007	2008
Asian Dropouts 9-12	Asian	42	59	82	105	106
Black Dropouts 9-12	Black	2,177	2,647	3,573	3,254	4,535
Hispanic Dropouts 9-12	Hispanic	266	286	403	507	538
Indian Dropouts 9-12	Indian	30	47	66	55	47
White Dropouts 9-12	White	6,357	6,698	6,945	6,604	6,808
Total Dropouts 9-12	Total	8,872	9,737	11,069	10,525	12,034

Asian Dropout Rate 9-12 (%)	Asian	1.1	1.5	1.9	2.4	2.3
Black Dropout Rate 9-12 (%)	Black	5.0	5.8	7.4	6.6	9.0
Hispanic Dropout Rate 9-12 (%)	Hispanic	5.1	4.8	5.8	7.0	6.9
Indian Dropout Rate 9-12 (%)	Indian	3.5	4.9	6.1	4.5	3.7
White Dropout Rate 9-12 (%)	White	2.9	3.1	3.2	3.0	3.1
Total Dropout Rate 9-12 (%)	Total	3.3	3.6	4.0	3.7	4.2

Source: Missouri Department of Elementary and Secondary Education, 2009

# Data Tables...

Graduation Rates, 2004-2008					
	Missouri				
Year	2004	2005	2006	2007	2008
<b>Total Number of Graduates</b>	58,040	57,838	58,435	60,200	61,752
Cohort Dropouts	9,739	9,438	9,653	9,584	10,715
Graduation Rate (%)	85.6	86	85.8	86.3	85.2
<b>Total Number of Asian Graduates</b>	868	851	1,027	1,036	1,025
Cohort Asian Dropouts	58	49	58	65	87
Asian Graduation Rate (%)	93.7	94.6	94.7	94.1	92.2
<b>Total Number of Black Graduates</b>	7,863	8,319	8,405	8,930	9,200
Cohort Black Dropouts	2,416	2,411	2,649	2,639	3,534
Black Graduation Rate (%)	76.5	77.5	76	77.2	72.2
<b>Total Number of American Indian Graduates</b>	189	193	197	222	272
Cohort American Indian Dropouts	34	37	45	52	54
American Indian Graduation Rate (%)	84.8	83.9	81.4	81	83.4
<b>Total Number of Hispanic Graduates</b>	947	1,080	1,264	1,370	1,498
Cohort Hispanic Dropouts	272	243	305	328	436
Hispanic Graduation Rate (%)	77.7	81.6	80.6	80.7	77.5
<b>Total Number of White Graduates</b>	48,168	47,395	47,542	48,642	49,757
Cohort White Dropouts	6,959	6,698	6,596	6,500	6,604
White Graduation Rate (%)	87.4	87.6	87.8	88.2	88.3
<p><a href="#">Source: Missouri Dept. of Elementary and Secondary Education</a> Core Data As Submitted by Missouri Public Schools</p>					