



# **Hispanic Student Performance on Missouri Standardized Achievement Tests**

## ***Cambio De Colores***

**April 2, 2007  
Kansas City, Missouri**

**Bill Elder and Keith Jamtgaard**

**University of Missouri--Columbia  
Office of Social and Economic Data Analysis**



Office of Social and Economic Data Analysis



University of Missouri Extension



# Overview

- We need to close our achievement gaps
- Review of “Perfect Storm” Report
- Overview of Hispanic Students in Missouri
- Review of Performance Trends
- Discussion – Strategies to close the gap



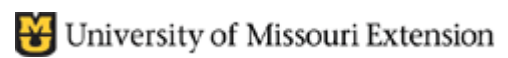
# America's Perfect Storm

*Three Forces Changing Our Nation's Future*



[www.ets.org](http://www.ets.org)

Office of Social and Economic Data Analysis





# America's Perfect Storm

*Three Forces Changing Our Nation's Future*

- Divergent skill distributions
- The changing economy
- Demographic shifts

# America's Perfect Storm

*Three Forces Changing Our Nation's Future*

- Divergent skill distributions
  - Flat NAEP scores
  - High school graduation slacking
  - Poor literacy and numeracy skills
  - Race and ethnic gaps

# America's Perfect Storm


*Three Forces Changing Our Nation's Future*

- The changing economy
  - Declining manufacturing – more service
  - Two thirds of job growth (1984-2000) was associated with college-level jobs
  - College grads earn 51% more than H.S. grads
  - Earning premiums reward education & skill

# America's Perfect Storm

*Three Forces Changing Our Nation's Future*

- Demographic shifts
  - Labor force will grow more slowly
  - Impact of the baby boom – its here now
  - Dependence on International migration
  - Increasing Hispanic population
  - Latino's have lowest levels of educational attainment – more than 50% without H.S.



# Enrollment Change

## From 1.4% to 2.8% in 5 years

	1999	2005	Change	Pct Change
Total	896,910	894,855	-2,055	-0.2%
Hispanic	12,633	25,166	12,533	99.2%

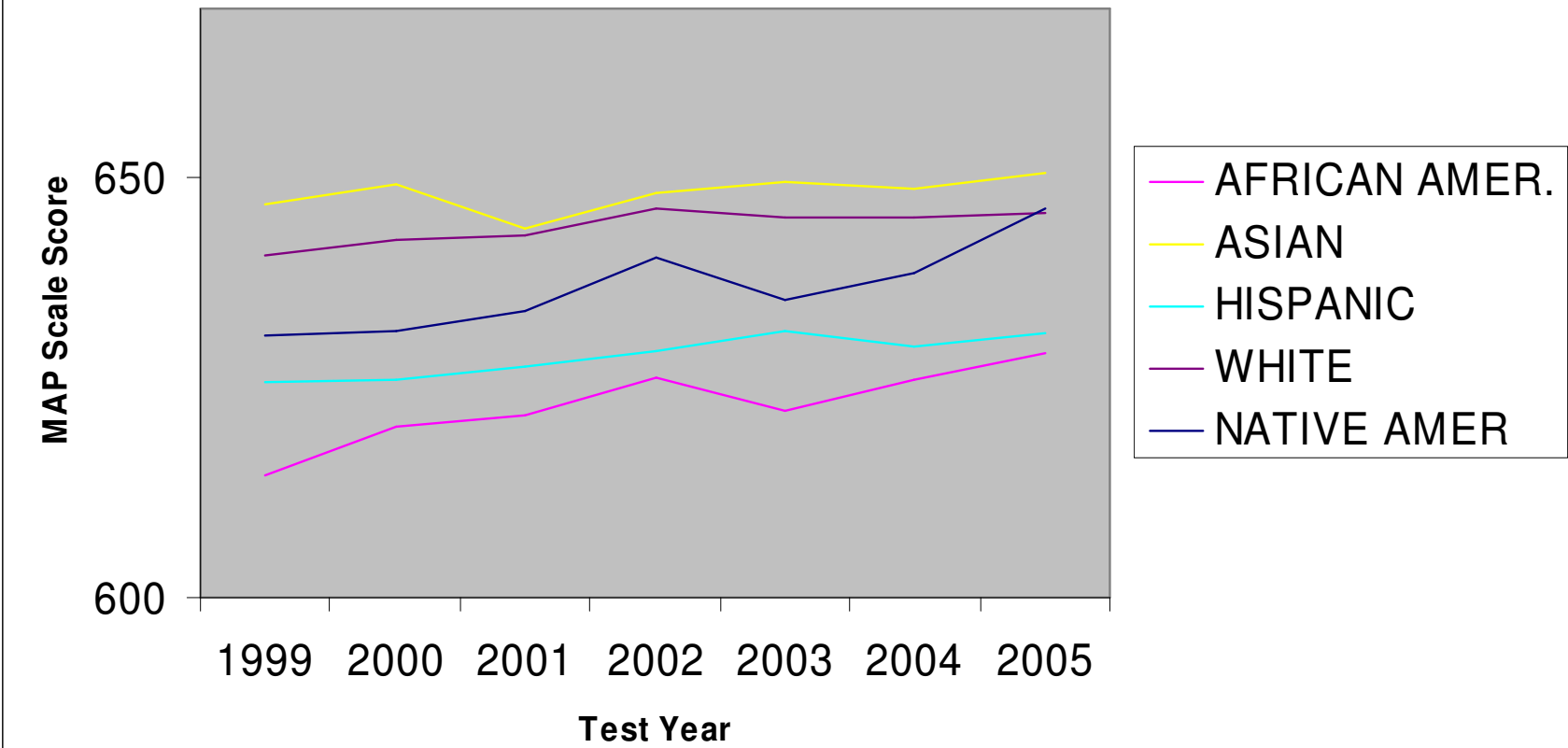




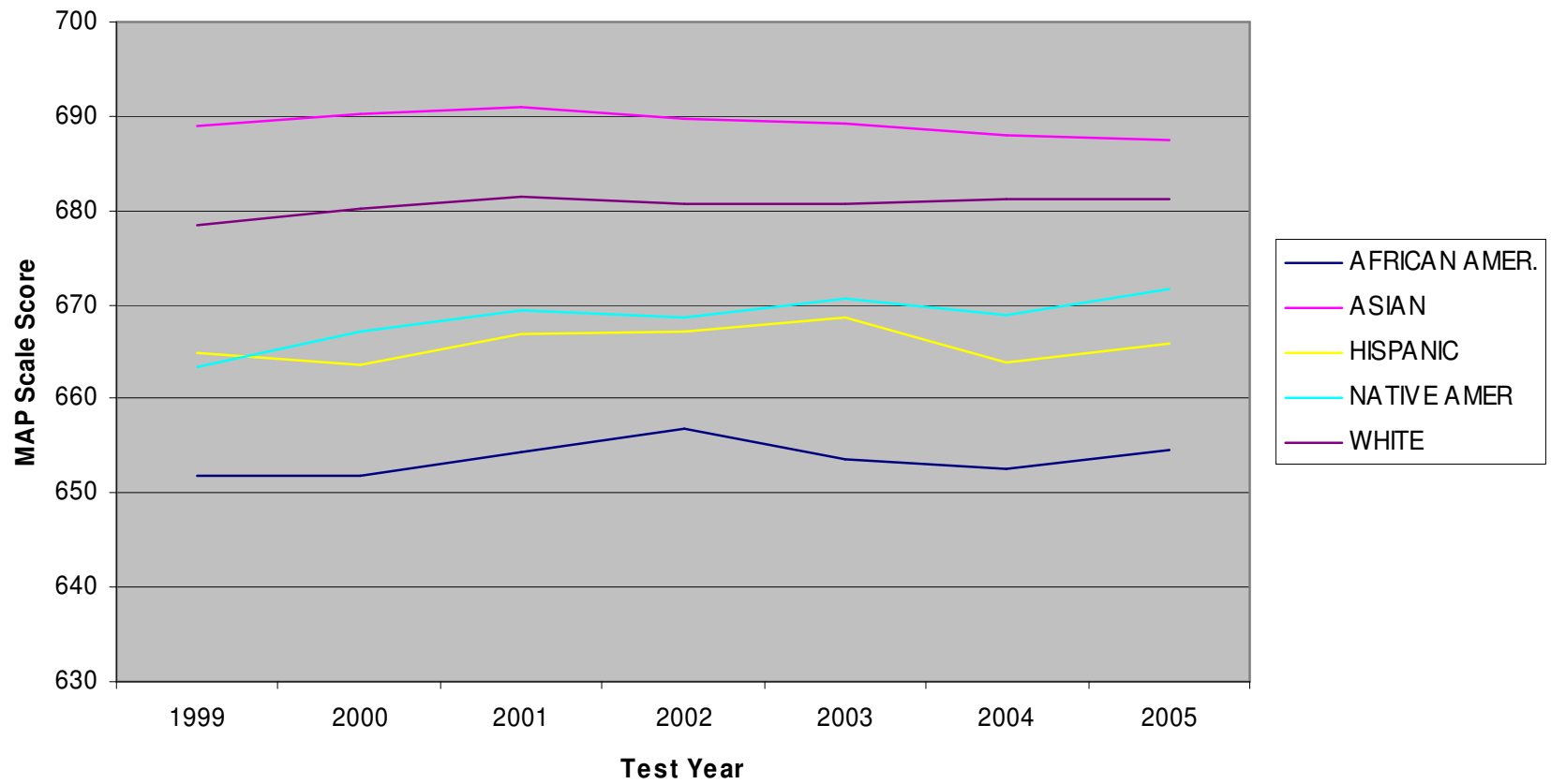
# Missouri Hispanic Student Enrollment Characteristics

- **61 % of Hispanic students attend 23 districts with at least 300 Hispanic students**
- **77 % of Hispanic students attend 45 districts with at least 100 Hispanic students**
- **24 % of Hispanic students attend 2 districts**
- **10 of the top 23 districts are in the KC Metropolitan Area**

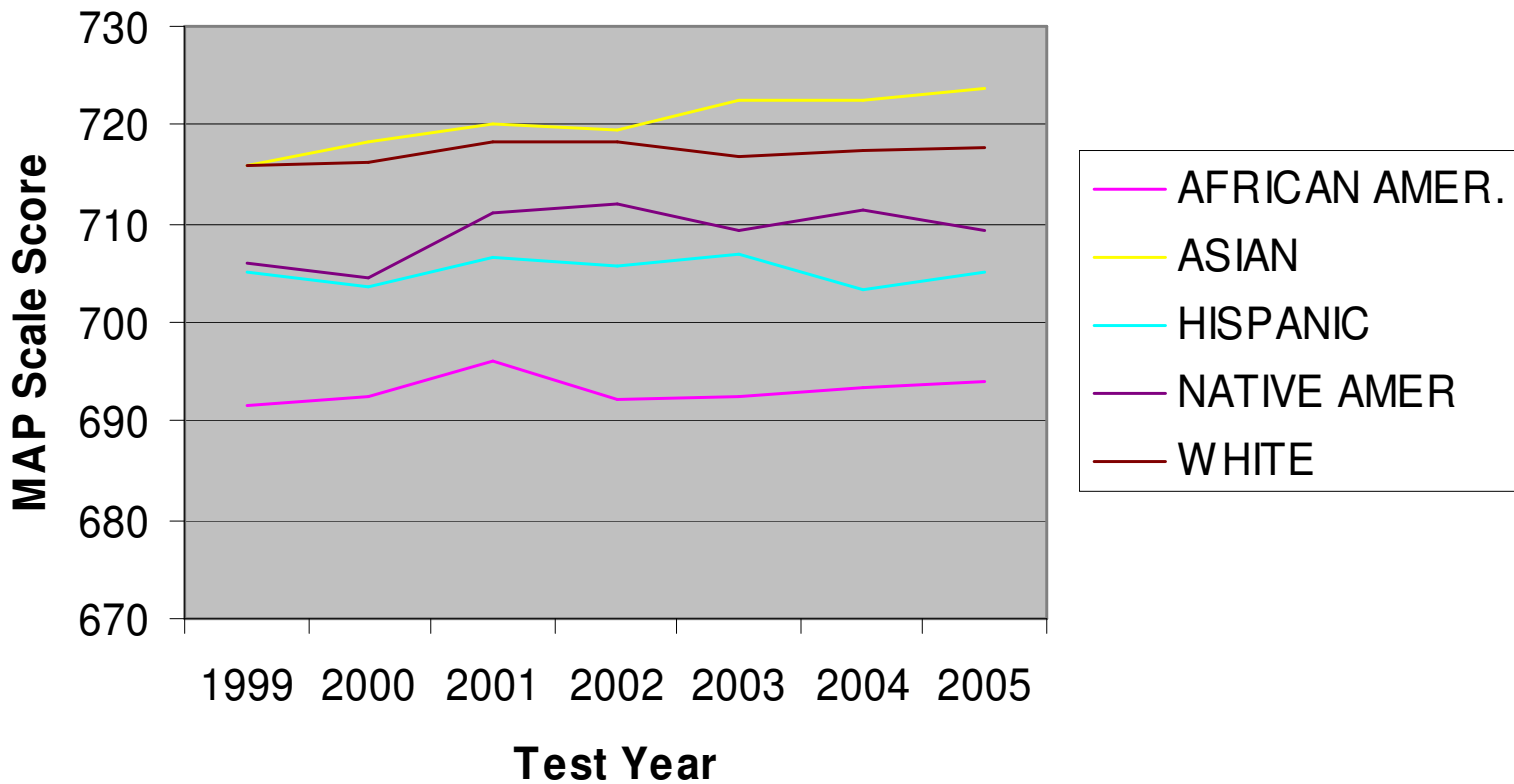
### 3rd Grade Comm Arts



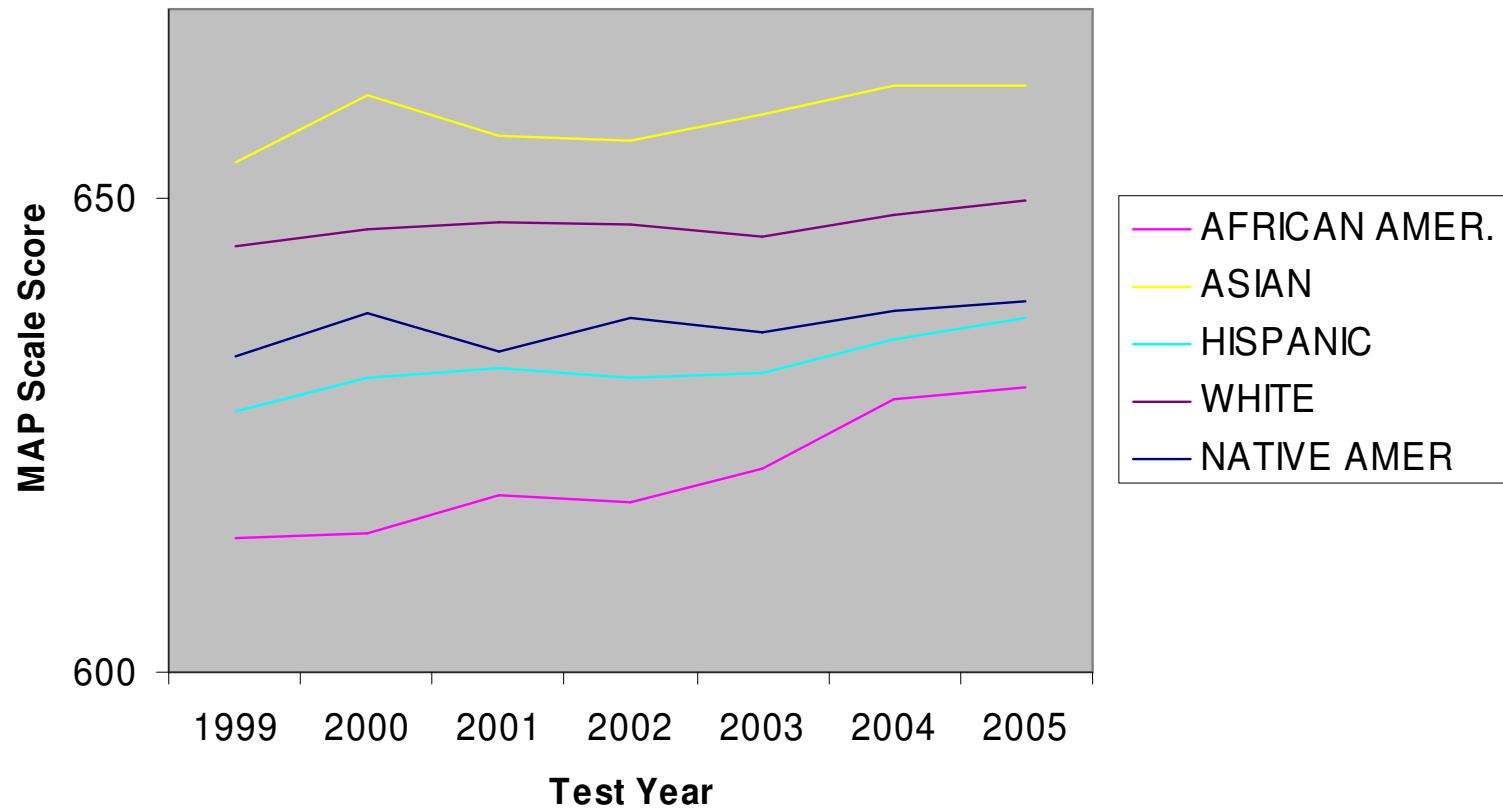
### 7th grade Comm Arts



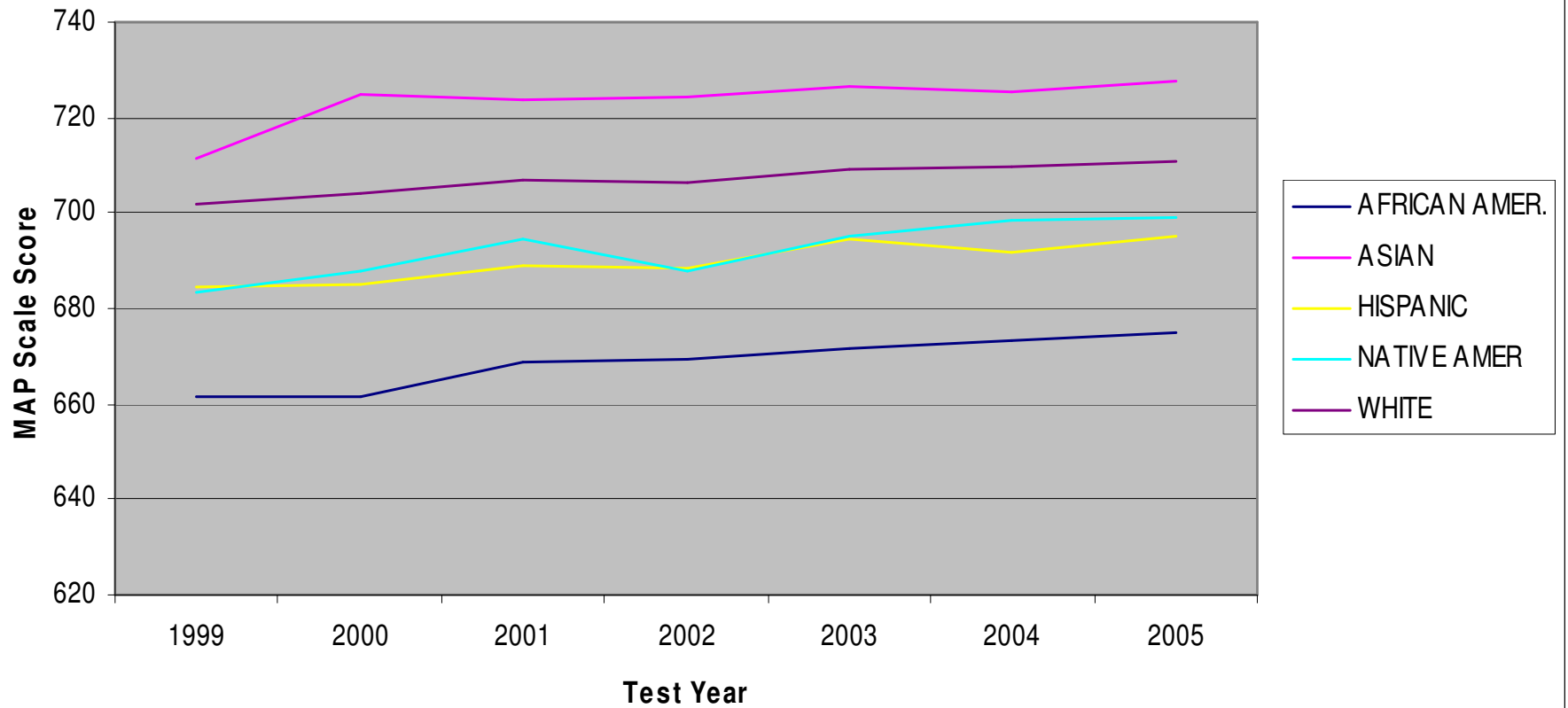
## 11th Grade Comm Arts



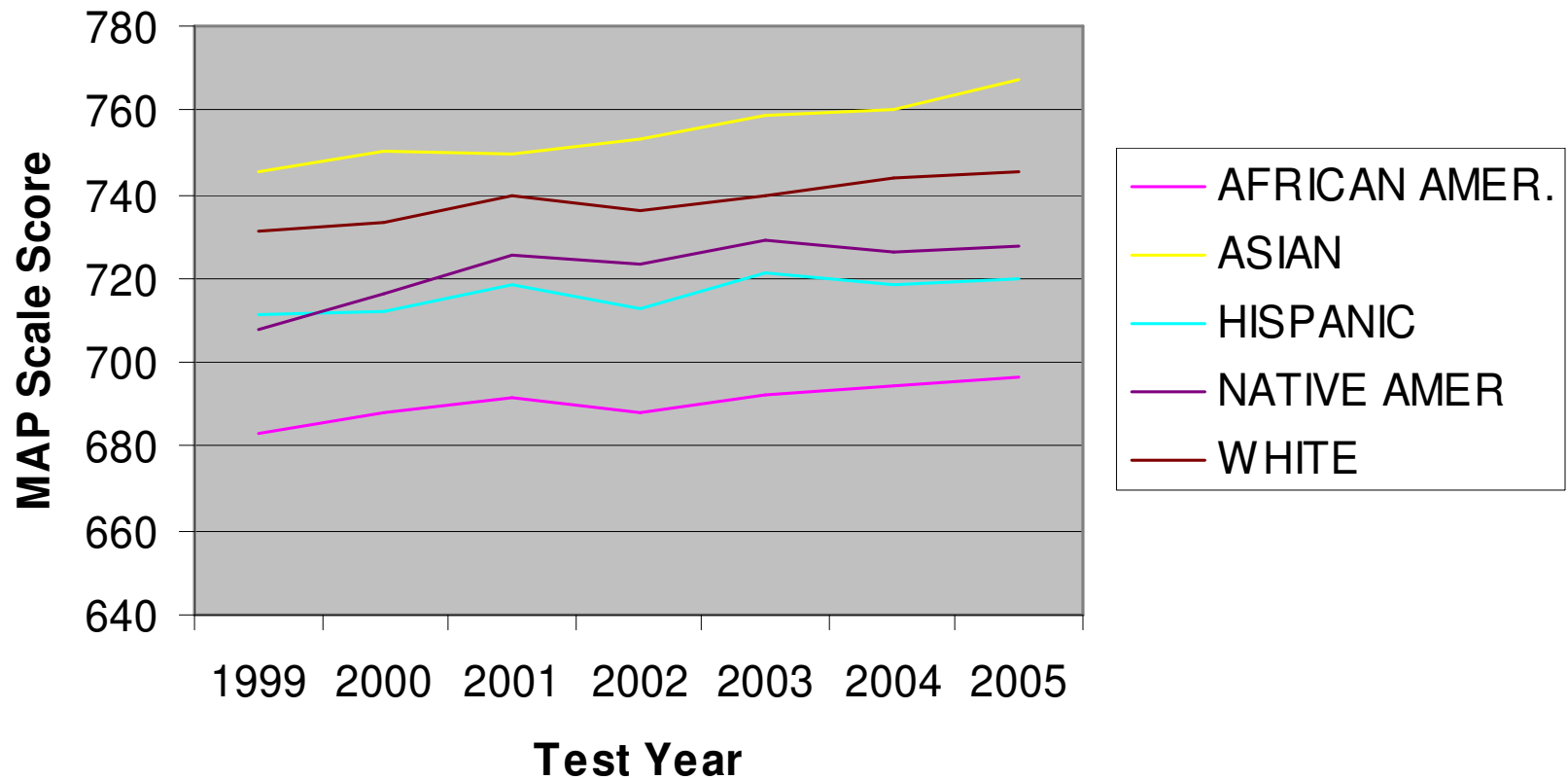
## 4th Grade Math



## 8th Grade Math



## 10th Grade Math



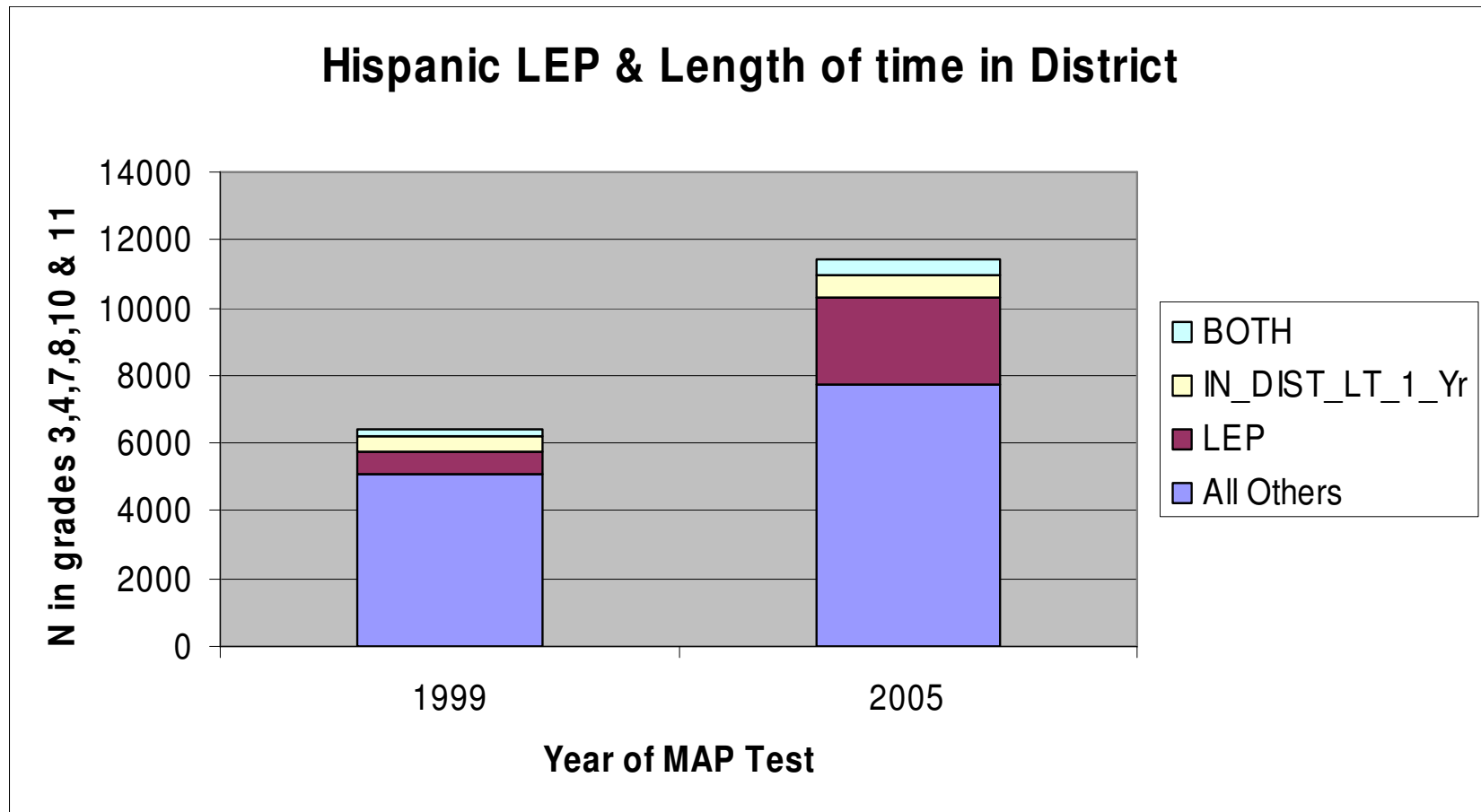


# MAP 2006 Grade Level Test

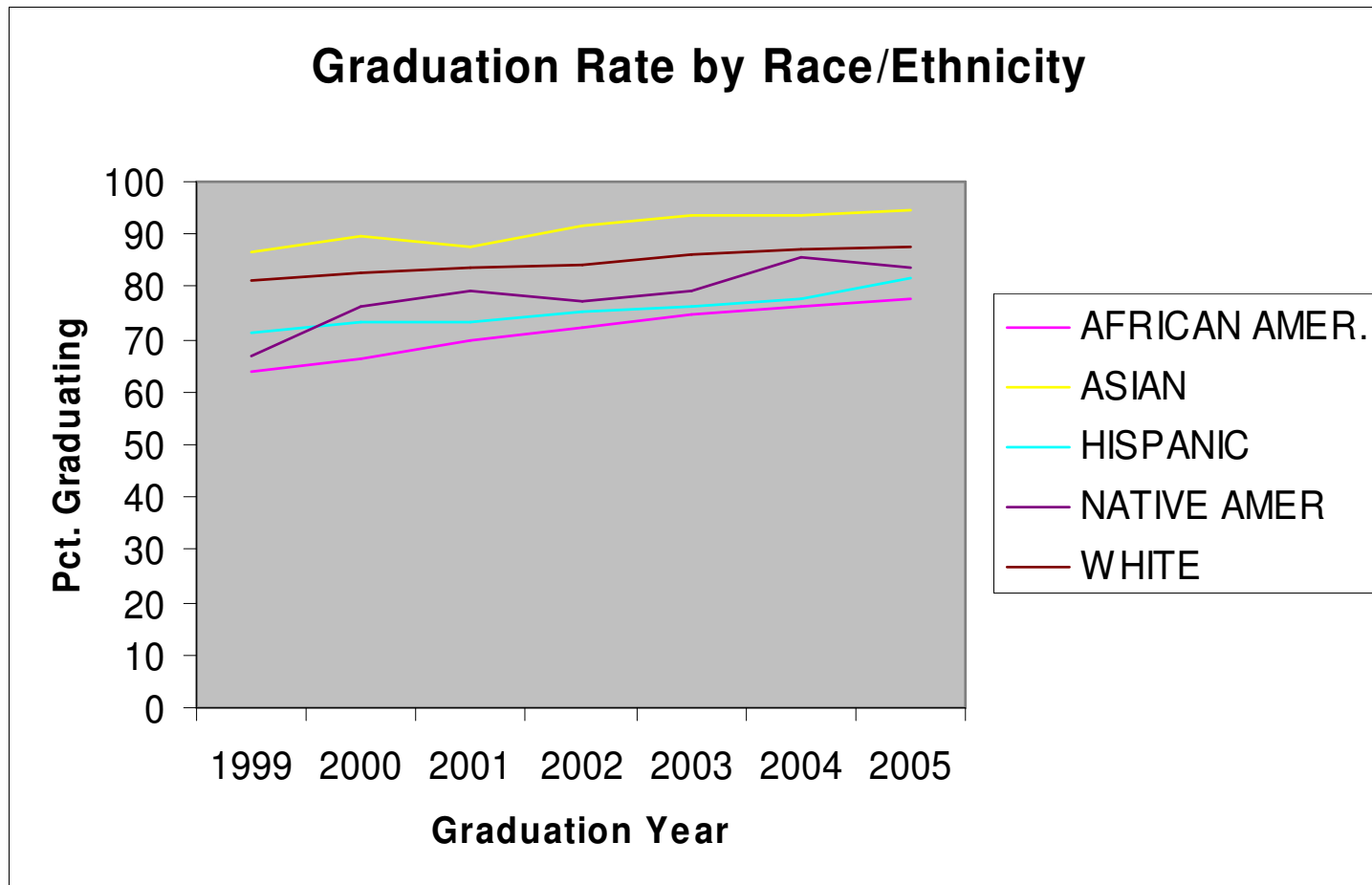
- Hispanic Students
  - Comm Arts “not met”      Math “met”
- LEP Students
  - Comm Arts “not met”      Math “not met”



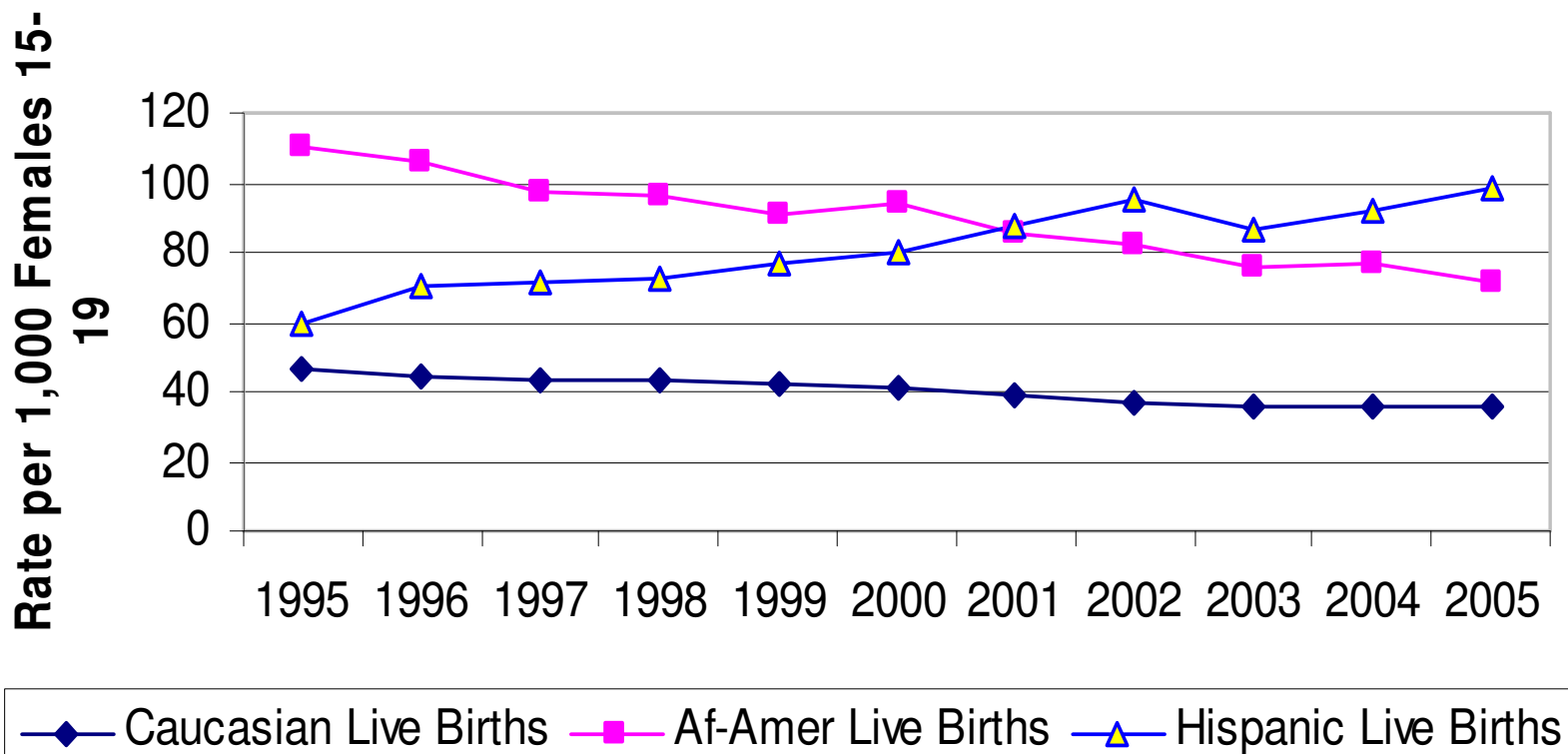
# Hispanic Student in MAP Grades



# Missouri High School Graduation



## Adolescent Live Births by Race 1995-2005





# Closing the Education Achievement Gap

- Increasing well being
- Adolescent births
- High School Drop Rate 6% in 2005
- Child poverty rate in Missouri 2005
  - 17.8 % all children
  - 26.3 % Hispanic children



# Closing the Education Achievement Gap

- Educational Strategies
  - Parent Engagement
  - After School Programs
  - Background Knowledge (vocabulary)
- Discussion



# **Hispanic Student Performance on Missouri Standardized Achievement Tests**

## ***Cambio De Colores***

**April 2, 2007  
Kansas City, Missouri**

**Bill Elder and Keith Jamtgaard**

**University of Missouri--Columbia  
Office of Social and Economic Data Analysis**



Office of Social and Economic Data Analysis



University of Missouri Extension