



Research Article

Open Access

Determination of Kanamycin Plasma Levels Using LC-MS and Its Pharmacokinetics in Patients with Multidrug- Resistant Tuberculosis with and without HIV-Infection

Pierre Mugabo^{1*}, Mercy I Abaniwonda¹, Danie Theron², Leonie Van Zyl², Shafick M Hassan³, Marietjie Stander⁴, Helen McIlleron⁵ and Richard Madsen⁶¹School of Pharmacy, University of the Western Cape, Private Bag X17, 7535. Bellville, South Africa²Brewelskloof Hospital, Department of Health, Province of Western Cape, South Africa³Department of Nursing and Radiology, Cape Peninsula University of Technology, Bellville, South Africa⁴Department of Biochemistry, University of Stellenbosch, South Africa⁵Department of Medicine, Division of Clinical Pharmacology, University of Cape Town, South Africa⁶Department of Statistics, University of Missouri, USA

Abstract

Purpose: The objectives of the study were: (1) to determine kanamycin plasma concentrations using liquid chromatography coupled with mass spectrometry (LC-MS), (2) to investigate kanamycin pharmacokinetics (PK) in patients with multi-drug resistant tuberculosis (MDR-TB), (3) to find out whether HIV infection, kidney dysfunction and antiretroviral drugs influence kanamycin PK.

Methods: The study was designed as a non-randomized study involving male and female HIV- positive and HIV-negative patients admitted for MDR-TB treatment. Blood samples were collected before (baseline) and ½, 1, 2, 4, 8 and 24 hours after intramuscular injection of kanamycin. LC-MS was used to quantify kanamycin plasma concentrations.

Results: Thirty one patients including 13 HIV (+) participated in the study. The lower limit of detection and lower limit of quantification of kanamycin were 0.06 µg/ml and 0.15 µg/ml respectively. Kanamycin PK parameters were described and there was no significant difference between HIV-positive and HIV-negative patients. A statistical significant difference (p=0.0126) was found in the renal function in HIV - positive and HIV - negative patients. However, this difference did not affect kanamycin elimination. No interactions have been identified between antiretroviral drugs and kanamycin. Conclusion: LC-MS analysis method is highly specific and highly sensitive in the detection and quantification of kanamycin plasma concentrations. Kanamycin PK in patients with MDR-TB was described. Due to a limited number of patients, we cannot rule out any influence of HIV - infection, renal impairment and antiretroviral drugs on kanamycin pharmacokinetics. The relationship between the area under the curve of kanamycin free plasma concentrations (AUC) and its minimum inhibitory concentrations (MIC) on M.tuberculosis isolated from the sputum of each patient should be assessed. Therefore, kanamycin free plasma concentrations and MIC should be determined

Keywords: Multi-drug resistant tuberculosis; Human immunodeficiency virus; Liquid Chromatography-Mass Spectrometry; Plasma concentrations; Pharmacokinetics; Kanamycin

Introduction

The surge of multidrug- resistant tuberculosis (MDR-TB) is raising concerns globally and in sub-Saharan Africa [1-6]. Although the epidemiological relationship between HIV infection and MDR-TB has not been established in sub- Saharan Africa [7-10], clinical evidence has shown that there is a link between HIV infection and the development of MDR-TB [11-14].

Many studies have confirmed that HIV -positive patients do not adequately absorb anti-TB drugs resulting in sub-therapeutic outcomes of anti-TB therapy that may result in the development of resistance to anti-TB drugs [12,13,15]. This evidence has not yet been confirmed for many of the second-line anti-TB drugs.

Interactions between anti-retroviral drugs and anti-TB drugs alter the plasma concentrations of anti-TB drugs and these interactions could result in sub-therapeutic anti-TB drugs plasma concentrations. For first-line anti-TB drugs, major drug/drug interactions occur between rifampicin (RIF) and highly active anti-retroviral therapy (HAART) drugs, protease inhibitors (PIs) and non-nucleoside reverse transcriptase inhibitors (NNRTIs) [16, 17]. Furthermore, interaction between tenofovir and kanamycin as a result of reduced elimination by the kidney could result in an increase in the plasma concentration of kanamycin.

Consequently, a better understanding of the pharmacokinetics (PK) and pharmacodynamics (PD) of anti-TB drugs should improve treatment outcomes in patients with MDR-TB infection and in patients with MDR-TB co-infected with HIV [18].

Kanamycin is one of the drugs used in the intensive phase treatment of MDR-TB. The PK of kanamycin has been studied in healthy volunteers using microbiological assay methods and to a limited extent in patients with MDR-TB [19,20]. To the best of our knowledge, there is no recently published study on the analysis of kanamycin plasma concentrations using liquid chromatography coupled with mass spectrometry (LC-MS). In addition, little information exists on the PK of kanamycin in HIV -negative patients infected with MDR-

*Corresponding author: Pierre Mugabo, University of the Western Cape, Private Bag X17, 7535. Bellville, South Africa, Tel: +27-219593441; E-mail: pmugabo@uwc.ac.za

Received: November 14, 2014; Accepted: January 07, 2015; Published January 15, 2015

Citation: Mugabo P, Abaniwonda MI, Theron D, van Zyl L, Hassan SM, et al., (2015) Determination of Kanamycin Plasma Levels Using LC-MS and Its Pharmacokinetics in Patients with Multidrug- Resistant Tuberculosis with and without HIV-Infection. Biochem Pharmacol (Los Angel) 4: 160. doi:10.4172/2167-0501.1000160

Copyright: © 2015 Mugabo P et al. This is an open-access article distributed under the terms of the Creative Commons Attribution License, which permits unrestricted use, distribution, and reproduction in any medium, provided the original author and source are credited.

TB [21], and currently there is no information on its PK in South African patients with MDR-TB infection and in patients with MDR-TB co-infected with HIV [22]. Therefore, information obtained from this study might help for future development of therapeutic drug monitoring (TDM) in order to improve patients' treatment outcome and optimise drug therapy.

Hence, we determined kanamycin plasma concentrations using LC-MS and evaluated the PK of kanamycin in patients with MDR-TB and in patients with MDR-TB co-infected with HIV during their course of treatment. We also examined the influence of HIV infection on kanamycin PK. We evaluated the effect of the kidney dysfunction on kanamycin PK and assessed the interaction between antiretroviral drugs and kanamycin.

Methods

Study site, design and subjects

The study was conducted at Brewelskloof Hospital (BKH), South Africa. BKH is one of the South African hospitals specialized in the treatment of MDR-TB. The study was designed as a prospective, non randomized pharmacokinetic study involving male and female HIV-positive and HIV-negative patients admitted for MDR-TB treatment.

Inclusion and exclusion criteria

A patient was included in the study if he/she complied with all of the following: (1) Signature of informed written consent; (2) Informed consent for HIV test; (3) On kanamycin treatment for at least 2 weeks; (4) Adult patients 18 - 65 years old; (5) MDR-TB sensitive to second-line anti-TB drugs.

Patients were excluded from the study in case any of the following criteria applied: (1) Patient request; (2) History of congestive cardiac failure; (3) Uncontrolled hypertension; (4) Ischemic heart disease; (5) Pregnancy or breast feeding; (6) Hypersensitivity to kanamycin; (7) Patients on drugs other than anti-retroviral drugs, known to interact with kanamycin; (8) Older than 65 years and younger than 18 years; (9) Haemoglobin less than 10g%, and (10) severe dehydration.

Kanamycin dose and blood sampling

Patients received kanamycin at a dose of 500, 600, 660, 750, 1000 mg daily based on their body weight. On the study day, after an 8-hour overnight fast, blood samples were collected in a heparinised tube via an intravenous catheter fixed on the forearm vein before (baseline) and ½, 1, 2, 4, 8 and 24 hours after intramuscular administration of kanamycin. Blood samples were immediately centrifuged at 5,250 rpm for 5 minutes. Then, plasma was separated and stored at -80°C until the day of analysis. Blood was also collected for renal and liver function tests, CD4 counts, viral load and haematology tests.

Determination of kanamycin plasma concentrations and chemicals used

Plasma levels of kanamycin were determined using LC-MS. The following chemicals were used in the study: analytical grade dimethyl sulfoxide (DMSO), acetonitrile (ACN), trichloroacetic acid (TCA), phosphoric acid and HPLC grade trifluoroacetic acid (TFA). All of them were obtained from Sigma-Aldrich (Cape Town, Western Cape). Kanamycin was supplied by BKH and used as a working standard.

Liquid Chromatography-Mass Spectrometry

LC-MS was performed with Waters Acquity UPLC system connected to a Xevo triple quadrupole mass spectrometer (Waters,

Milford, MA, USA). The Waters Atlantis is a reversed phase packing with a difunctional C₁₈ ligand, designed to retain polar compounds better. The mobile phase used was 1 % formic acid in water (v/v) as solvent A, solvent B consisted of acetonitrile. A flow rate of 0.23 ml/min was applied and an injection volume of 5 µl. The gradient started at 98% solvent A for the first 2 minutes followed by a linear gradient over 8 minutes to 70 % solvent B. The column was washed for 1 minute at 100% solvent B and re-equilibrated for another 6 minutes at the starting conditions.

The MS conditions were as follows: electrospray ionization in the positive mode was applied, the ion source and desolvation temperature were held at 140 °C and 400 °C, respectively. The capillary voltage was 2.8 kV. The desolvation gas at 1000 L/h and the cone gas was 50 L/h. The instrument was operated at multiple reactions monitoring (MRM) mode. The MRM settings for kanamycin was 485 > 163 at collision energy 20 eV and cone voltage of 20 V. Propranolol was used as internal standard and was monitored at an MRM of 260.3 > 183 at a collision energy of 20eV and cone voltage of 18 V. Waters MassLynx™ software was used for the data collection and processing.

Preparation of standards

The stock solution of 1 mg/ml was serially diluted with acetonitrile to obtain working solutions with the concentrations 10, 5, 1, 0.5, 0.1, 0.05 and 0.01 µg/ml. All these standards contained 10 ppm propranolol as internal standard.

Patient samples preparation

To prepare the patients' plasma samples for the LC-MS assay, trichloroacetic acid (30 µl) was added to 50 µl plasma followed by 170 µl internal standard solution (10 ppm propranolol in water). The mixture was vortexed for 1 minute, followed by centrifugation at 6000 g for 5 minutes. The supernatant was injected onto the LC-MS. Blank plasma was spiked with 1 and 5 ppm of kanamycin in triplicate to determine the recoveries and repeatability. The relative standard deviation was better than 12%. This relatively high standard deviation and relatively high limit of detection and quantification is due to the fact that kanamycin elutes just after the void volume of the column. The use of a C18 column with similar selectivity as the Waters Atlantis column used here is very important for this analysis.

Determination of pharmacokinetic parameters

The plasma concentration-time profile for each patient was plotted using a semi-log graph paper. Kanamycin PK parameters were calculated based on the non-compartmental analysis [22-24] and expressed as median and range (lowest to highest).

Statistical analysis

Patients' data were organised and coded onto data collection forms and captured into Microsoft Excel spreadsheets. Kanamycin concentrations and PK parameters were analysed using descriptive statistics. Analysis was done using SAS version 9.0 (SAS Institute Inc., Cary, NC, USA).

Since the data is highly skewed in many cases, the HIV+ and HIV- groups were compared using the Wilcoxon Rank Sum test rather than a t-test. PK parameters were reported as mean and standard deviation. The Kruskal-Wallis one-way analysis of variance was used in comparing more than two groups to see if they originate from the same population. Statistical significance was assumed at the p < 0.01 level to avoid a type I error (false positive).

The number of patients in HIV-positive and HIV-negative groups was sufficient to give a power of about 80% in detecting a statistical significant difference in the means of about 1.2 standard deviations based on our power calculations. Also, the number of patients who participated in previously published studies [21,25-28] was similar to the number of patients in our study.

Ethics consideration

The study was approved by the ethics committee of the University of the Western Cape and the University of Cape Town. Permission to conduct the study was granted by the Western Cape Department of Health. It was conducted according to the national and international ethics requirements. The information collected was kept confidential and saved in a safe file which can only be accessed by the researcher. Patient confidentiality and privacy was maintained at all times.

Results

Patients' demographic data

Thirty-one patients (17 males and 14 females) infected with MDR-TB participated in the study. Of these 31 patients, 13 (8 males and 5 females) were infected with HIV. The median (range) age and weight of patients were 32 (18–54) years and 53.0 (41.8–90.0) kg, respectively.

Renal and liver function profile

The renal function was normal in 5 HIV (+) and 15 HIV (-) patients, mildly impaired (60-89 GFR) in 6 HIV (+) and 3 HIV (-) patients, moderately impaired (40-59 GFR) in 2 HIV (+) patients. Liver function tests were normal in both HIV (+) and HIV (-) patients.

Virological profile

In HIV (+) patients the CD4 count (cells/mm³) was <100 in 5 patients, 100-299 in 3 patients and > 300 in 5 patients. The viral load was less than 40 copies/ml in 10 patients and 5,000 to 1,000,000 copies/ml in 3 patients.

Validation of the method of kanamycin liquid chromatography-mass spectrometry analysis

Liquid chromatography coupled with mass spectrometry was used in the quantification of kanamycin plasma concentrations. This method was validated by determining linearity, recovery, precision and accuracy, low limit of detection, low limit of quantification, and specificity.

The overall precision expressed as relative standard deviation (RSD %), was less than 12%. The accuracy, expressed in terms of recovery was 74 ± 9.1% and 111 ± 6.2% for 1 µg/ml and 5 µg/ml, respectively.

The lower limit of detection of kanamycin was 0.06 µg/ml. The lower limit of quantification of kanamycin in the plasma was 0.15 µg/ml.

There were no interfering peaks from the plasma components with kanamycin peak in the blank plasma, which was detected at a retention time of 2.65 minutes. Figure 1 shows the chromatograms of kanamycin and internal standard of a patient's plasma. This relatively high standard deviation and relatively high limit of detection and quantitation is due to the fact that kanamycin elutes just after the void volume of the column. The use of a very polar C18 column is very important for this analysis as most other columns and solvent systems tested were unable to retain kanamycin.

Kanamycin pharmacokinetic parameters

Table 1 and Figure 2 present kanamycin mean plasma concentrations in HIV-negative and HIV-positive patients at different times of blood sampling as indicated in the methods. The standard deviations (STD) and P-values between HIV-negative and HIV-positive are also shown. Before kanamycin administration there were no detectable plasma concentrations from previous day kanamycin administration in both HIV - positive and HIV - negative patients. However, 24 hours after current study kanamycin dosing, the mean plasma concentrations were 1.27 ± 2.89 µg/ml in HIV (+) and 0.97 ± 2.54 µg/ml in HIV (-) patients.

Table 2 and Figures 3-5 present kanamycin pharmacokinetic parameters in HIV-negative and HIV-positive patients. The elimination rate constant (K_e), the elimination half-life ($T_{1/2}$), the area under the plasma concentration curve during 24 hours (AUC_{0-24}), the area under the plasma concentration curve from zero to infinity ($AUC_{0-\infty}$), the maximum plasma concentrations (C_{max}), the time to the maximum plasma concentrations (T_{max}), the absorption rate constant (k_a), the absorption half-life ($t_{1/2}$), the volume of distribution (V_d), the total clearance (Cl_{tot}), and the mean residence time (MRT) are given in Table 2 in the order at which they appear. Each parameter is shown as mean value plus STD. P-values between HIV (-) and HIV (+) patients are also indicated.

Discussion

Determination of kanamycin plasma concentrations using liquid chromatography-mass spectrometry

The LC-MS method is a proven method and has been widely used in the quantification of anti-TB drugs [22-24]. The plasma levels of kanamycin were determined using LC-MS method and analysis was conducted according to scientific standards. The linearity, lowest limit of detection, lowest limit of quantification, specificity, precision, recovery and accuracy were conducted to validate the assay. All chemicals used were prepared and standardised regularly. Chemicals were obtained from a reputable source (Sigma-Aldrich, Cape Town). Separation of kanamycin was achieved at a retention time of 1.50 minutes with a high recovery percentage of 92.5%.

Previously published studies have used microbiological and fluoroimmunoassay in the quantification of kanamycin [21,25-28]. This study results demonstrate that the LC-MS analysis method is highly successful and accurate in the detection and quantification of kanamycin concentrations in plasma.

At baseline kanamycin plasma concentrations were below detectable levels (0.05 µg/ml). This could be as a result of an insufficient amount of kanamycin remaining in the body 24hrs after previous dosing that could be detected at baseline.

Kanamycin pharmacokinetics

Kanamycin PK parameters have been described in 3 studies in healthy volunteers [25,26,28] and in one study involving HIV -negative patients infected with MDR-TB [21] using immunoassay methods. C_{max} , T_{max} , K_e , $T_{1/2}$, Cl_{tot} and V_d results of these studies range from 20 to 35 µg/ml, 1 to 2 hours, 0.29 to 0.30 hr⁻¹, 2 to 4 hours, 5 to 6 L/hr and 17–23 L respectively [21,25,26,28].

When comparing kanamycin PK parameters in previous studies to that of HIV -negative patients in the study, the mean C_{max} (18.39 µg/

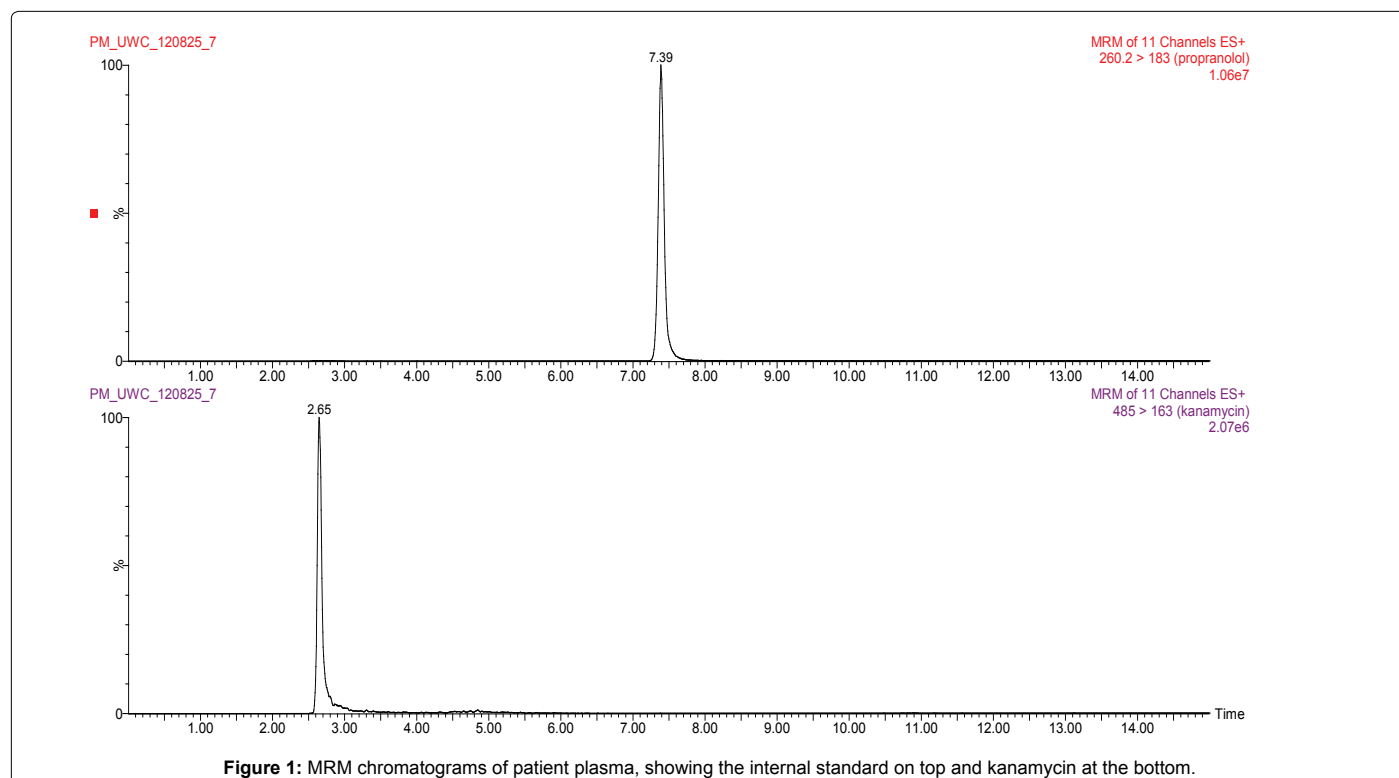


Figure 1: MRM chromatograms of patient plasma, showing the internal standard on top and kanamycin at the bottom.

Time (hr)	HIV - NEG (N=18) Mean (µg/ml)	HIV - NEG (N=18) STD	HIV - POS (N=13) Mean (µg/ml)	HIV - POS (N=13) STD	P-value
t0	0.00	0	0.00	0	1
t0.5	1.94	3.83	3.83	5.27	0.3472
t1	16.43	5.63	15.94	7.47	0.9447
t2	14.33	5.92	14.46	4.78	0.9916
t4	9.06	3.79	9.83	3.18	0.7004
t8	4.96	4.13	5.64	4.14	0.4105
t24	0.97	2.54	1.27	2.89	0.5139

Table 1: Kanamycin plasma concentrations in HIV-negative and HIV-positive patients.

ml) was lower, T_{max} (1hr) was similar, K_e ($0.13hr^{-1}$) was lower, $T_{1/2}$ (5.37 hrs) was longer, Cl_{tot} (4.00L/hr) was higher and V_d (33.02L) was higher. The increased V_d kanamycin could be responsible for the long time kanamycin molecules resided in HIV-negative patients [20,25,26,28].

Influence of human immunodeficiency virus on the pharmacokinetics of kanamycin

The rate and extent of absorption of kanamycin as represented by the T_{max} and C_{max} were similar in both HIV -positive and HIV -negative patients. The AUC_{0-24} , which quantifies the extent of absorption of kanamycin was also similar in HIV -positive and HIV -negative patients. HIV -positive patients were not severely affected by HIV. Many HIV positive patients had good immunological and virological profile. Eight out of thirteen patients had a CD4 count within the ranges of (100-599) cells/mm³ and ten had a viral load of less than 40 copies/ml.

When compared to other HIV -positive patients in the study, a reduction in the extent of distribution of kanamycin in two patients with CD4 count of 382 and 336 cells/mm³ and represented by a V_d of 13.28 and 15.39 L, respectively, might be associated with the short elimination $T_{1/2}$ of 2.10 and 3.15 hours and MRT of 2.39 and 2.87 hrs,

respectively that was observed. The $T_{1/2}$ of a drug is a PK parameter dependent on both V_d and CL_{tot} and is a reflection of the extent of the distribution or elimination of a drug [29-32]. Similarly, an increase in the V_d (60.22, 51.92, 26.26 and 30.17 L) of kanamycin in some patients as compared to other HIV -positive patients resulted in the lengthening of the elimination $T_{1/2}$ of 6.30, 8.77, 11.00 and 5.33 hrs and MRT of 7.92, 8.80, 12.96 and 4.69 hrs, respectively.

There were no significant differences in the PK parameters of kanamycin in HIV -positive patients when compared to the mean PK parameters in HIV -negative patients. The smallest observed p-value is about 0.48 However, it should be remembered that the sample sizes are relatively small so that there is limited power to detect differences. Differences may in fact exist but could not be detected statistically.

Influence of renal dysfunction on the pharmacokinetics of kanamycin:

There was a significant difference ($p=0.013$) in the renal function between the HIV -positive and HIV -negative patients. However there was no significant difference ($p=0.31$) when we correlated the GFR values and the PK parameters in the two groups of patients to see if changes in the renal function affected the PK of kanamycin. HIV could be responsible for the significant difference in the renal function between HIV -positive and HIV -negative patients. A decline in renal function and low CD4 count are associated with HIV-related nephropathy, due to HIV infecting the renal cells directly [33-35]. Also, we had more patients with impaired renal function in the HIV -positive group than in the HIV -negative group and this could have contributed to the statistical difference. This result is consistent with a study done in South African patients, reporting that HIV-related nephropathy is exhibited in HIV positive patients at any stage of HIV infection and is characterised with varying degrees of GFR [33].

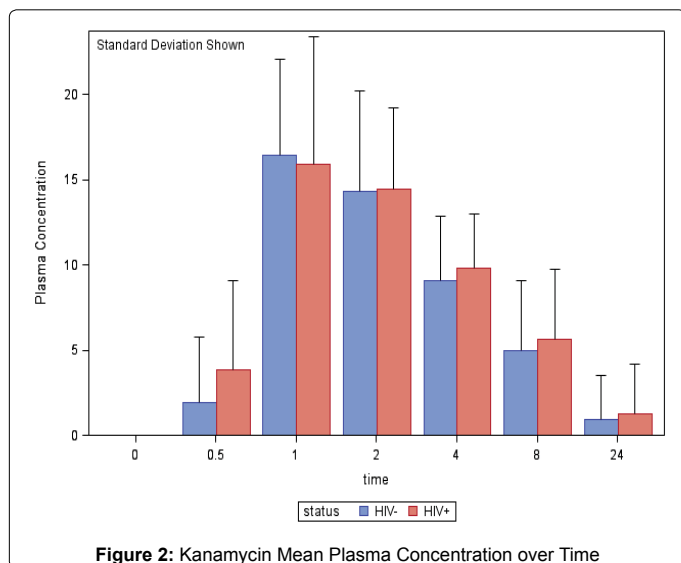


Figure 2: Kanamycin Mean Plasma Concentration over Time

PK Parameters	HIV - NEG (N=18)		HIV - POS (N=13)		P-value
	Mean ($\mu\text{g/ml}$)	STD	Mean ($\mu\text{g/ml}$)	STD	
K_e (hr^{-1})	0.20	0.11	0.19	0.08	0.8205
T_{max} (hr)	1.16	0.49	1.27	0.53	0.6159
K_a (hr^{-1})	1.29	1.32	1.05	0.88	0.8357
$t_{1/2}$ (hr)	1.67	1.86	1.29	1.59	0.9273
$T_{1/2}$ (hr)	4.45	2.25	4.62	2.66	0.8205
Cl_{tot} (L/hr)	7.72	5.49	9.13	8.93	0.7153
MRT (hr)	3.99	3.01	4.16	3.56	0.7674
C_{max} ($\mu\text{g/ml}$)	18	4.69	16.35	5.76	0.4892
V_d (L)	38.62	18.56	50.18	45.34	0.7078
AUC_{0-24} ($\mu\text{g/ml}\cdot\text{hr}$)	122.53	58.58	122.89	77.94	0.6217
$AUC_{0-\infty}$ ($\mu\text{g/ml}\cdot\text{hr}$)	170.26	91.37	169.08	115.32	0.5669

Table 2: Kanamycin PK parameters in HIV-negative and HIV positive patients.

Influence of antiretroviral drugs on the pharmacokinetics of kanamycin?

Kanamycin was administered with other MDR-TB drugs to all patients. Some of the HIV positive patients were also given lamivudine, stavudine and efavirenz. None of these drugs affected the metabolism, distribution and renal elimination of kanamycin.

Therapeutic implications

The two common PK parameters associated with the clinical efficacy of aminoglycosides are C_{max} and AUC_{0-24} [36]. High peak plasma concentration of aminoglycosides is associated with increased rate of elimination of Mycobacterium tuberculosis (MTB) and better therapeutic response in patients [4,12]. However, due to the narrow therapeutic range (20-35) $\mu\text{g/ml}$ of aminoglycosides [12], care must be taken when administering kanamycin in patients with renal impairment.

Kanamycin shows inhibitory activity against MTB at concentration of about 6 $\mu\text{g/ml}$ in vitro and an intramuscular dose of 15 mg/kg produces a C_{max} of 35-45 $\mu\text{g/ml}$ [4,12]. Most of our patients had a low peak plasma concentration of kanamycin when compared to the literature [25-28]. A median dose of 18.9 mg/kg of kanamycin in both HIV -positive and HIV -negative patients in the study resulted in a peak plasma level of 18.19 (8.40-27.63) $\mu\text{g/ml}$ and 18.39 (13.32-25.26) $\mu\text{g/ml}$, respectively. The low C_{max} could result in poor response

to therapy and increased risk of selection of drug-resistant organisms. This is because kanamycin has a concentration-dependent bactericidal activity as the rate of bacterial killing increases as the concentration increases [37-40]. In addition, the C_{max} : MIC ratio correlates best with bacterial killing and it is important to have a high C_{max} : MIC ratio of at least 8-10 to prevent resistance for aminoglycosides [40,41]. Therefore, the ideal dosing regimen of kanamycin would maximise concentration, because the higher the concentration, the higher the extent of bacterial killing [40].

It has been suggested that clinicians should aim for a C_{max} of between 20 and 35 $\mu\text{g/ml}$ to maximise the rate and extent of bacterial killing and a C_{trough} (trough level) of <10 $\mu\text{g/ml}$ to prevent toxicity when kanamycin is given intramuscularly [12]. Based on our results, the mean C_{trough} of kanamycin in HIV -positive and in HIV -negative patients was 1.27 ± 2.89 $\mu\text{g/ml}$ and 0.97 ± 2.54 $\mu\text{g/ml}$ respectively. This explains that kanamycin plasma levels were not toxic in our patients.

Furthermore, a high C_{max} : MIC ratio suggests a persistent prolonged period of bacterial growth inhibition after exposure to aminoglycosides. Clinically, the post antibiotic effect (PAE) for aminoglycosides is usually between 2 and 4 hours [42]. The PAE of aminoglycosides suppresses bacterial regrowth when serum concentrations are below the MIC [42,43].

Limitations of the Study

We had an unequal distribution of patients in the HIV-positive and HIV-negative groups. Thirty-one patients volunteered to participate in the study, of which 13 were HIV-positive. Also, there were very few patients with kidney dysfunction and no drug-drug interaction was observed between kanamycin and co-administered medications.

There was no balance in the CD4 count and viral load in HIV-positive patients. Five patients had a CD4 count of <100 cells/mm³ and eight had a CD4 count of >100 cells/mm³. Some patients were in the early stage of the disease, while some had advanced HIV infection. In addition, studies on the PK of kanamycin are very scarce, especially in sub-Saharan Africa. Thus, comparison of our results with previously published studies for similarities or differences in the PK parameters was limited. Future studies involving more volunteers are needed.

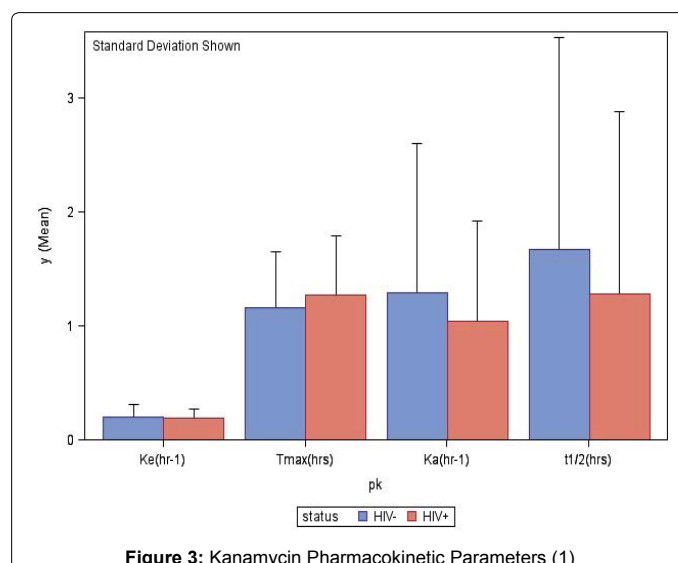


Figure 3: Kanamycin Pharmacokinetic Parameters (1)

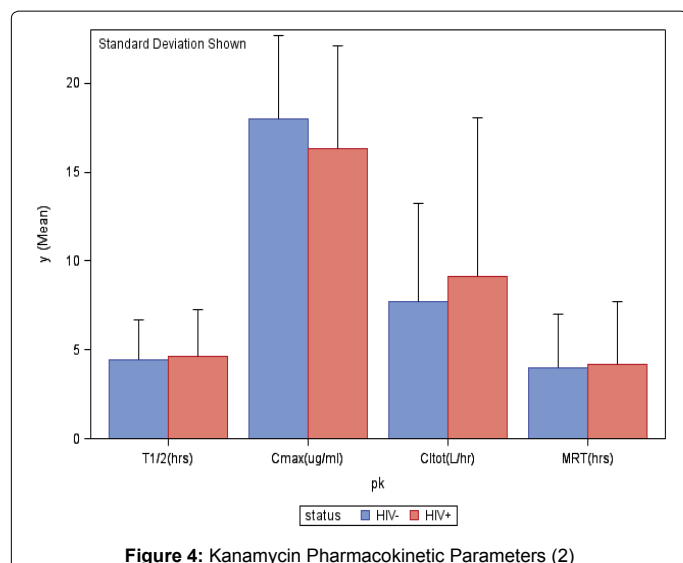


Figure 4: Kanamycin Pharmacokinetic Parameters (2)

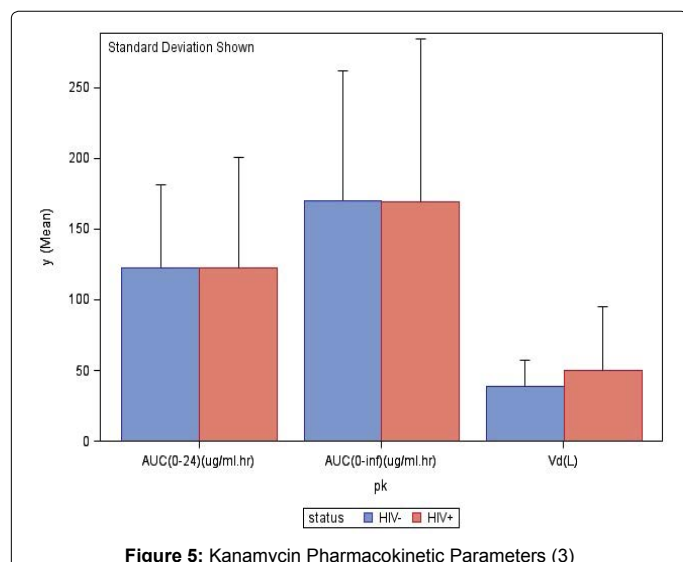


Figure 5: Kanamycin Pharmacokinetic Parameters (3)

Conclusion

Based on the results obtained, we can conclude that objectives of the present study were achieved.

The LC-MS analysis method is highly specific and highly sensitive in the detection and quantification of the plasma concentrations of kanamycin. The PK of kanamycin in patients with MDR-TB and in those with MDR-TB co-infected with HIV was described. Furthermore, HIV infection does not have any influence on the PK of kanamycin. Finally, changes in renal function do not influence the PK of kanamycin.

Recommendations

Based on the results of this study, the following should be considered for future studies.

Kanamycin-free plasma concentrations should be evaluated, in order to determine the AUC of the free plasma concentrations (fAUC) which, together with the MIC will be used to determine the relationship between fAUC and MIC of kanamycin.

Therefore, the MIC of kanamycin on *M.tuberculosis* isolated from

the sputum of each patient should be determined.

PK/PD relationship of kanamycin should be determined, because it quantifies the activity of an antibiotic and describes the time course of action of the antibiotic.

Acknowledgement

The following people and departments are acknowledged:

The medical superintendent at Brewelskloof Hospital for permission to conduct the study.

Staff members at Brewelskloof Hospital for their support.

The Pharmaceutical Services, Provincial Administration of the Western Cape for supplying anti-tuberculosis tablets.

The Department of Health, Province of the Western Cape for the permission to conduct the study at Brewelskloof Hospital.

Patients who participated in the study.

The research department, University of the Western Cape for financial support of the study.

The Medical Research Council for financial support of the study.

References

1. Weyer K (2004) Dots-plus for standardized management of multidrug resistant tuberculosis in South Africa- Policy guidelines, Pretoria, South Africa: Medical Research Council of South Africa, Department of Health.
2. Andrews JR, Shah NS, Gandhi N, Moll T, Friedland G, et al. (2007) Multidrug-resistant and extensively drug-resistant tuberculosis: implications for the HIV epidemic and antiretroviral therapy rollout in South Africa. *J Infect Dis* 196 Suppl 3: S482-490.
3. Wells CD, Cegielski JP, Nelson LJ, Laserson KF, Holtz TH, et al. (2007) HIV infection and multidrug-resistant tuberculosis: the perfect storm. *J Infect Dis* 196 Suppl 1: S86-107.
4. Budha NR, Lee RE, Meibohm B (2008) Biopharmaceutics, pharmacokinetics and pharmacodynamics of antituberculosis drugs. *Curr Med Chem* 15: 809-825.
5. Mitnick CD, Appleton SC, Shin SS (2008) Epidemiology and treatment of multidrug resistant tuberculosis. *Semin Respir Crit Care Med* 29: 499-524.
6. World Health Organization (2009) Treatment of tuberculosis: Guidelines for national programmes. Fourth edition, World Health Organization: Geneva, Switzerland.
7. Wilkinson D, Pillay M, Davies GR, Sturm AW (1996) Resistance to antituberculosis drugs in rural South Africa: rates, patterns, risks, and transmission dynamics. *T Roy Soc Trop Med*, Vol.90, No.6, pp. 692-695.
8. Kenyon TA, Mwasekaga MJ, Huebner R, Rumisha D, Binkin N, et al. (1999) Low levels of drug resistance amidst rapidly increasing tuberculosis and human immunodeficiency virus co-epidemics in Botswana. *Int J Tuberc Lung Dis* 3: 4-11.
9. Churchyard GJ, Corbett EL, Kleinschmidt I, Mulder D, De Cock KM (2000) Drug-resistant tuberculosis in South African gold miners: incidence and associated factors. *Int J Tuberc Lung Dis* 4: 433-440.
10. World Health Organization (2004) Anti-tuberculosis drug resistance in the world: third global report. WHO/International Union against Tuberculosis and Lung Disease Global Project on Anti-tuberculosis Drug Resistance Surveillance, Geneva, Switzerland.
11. Patel KB, Belmonte R, Crowe HM (1995) Drug malabsorption and resistant tuberculosis in HIV-infected patients. *N Engl J Med* 332: 336-337.
12. Peloquin CA (2002) Therapeutic drug monitoring in the treatment of tuberculosis. *Drugs* 62: 2169-2183.
13. Gurusurthy P, Ramachandran G, Hemanth Kumar AK, Rajasekaran S, Padmapriyadarsini C, et al. (2004) Decreased bioavailability of rifampin and other antituberculosis drugs in patients with advanced human immunodeficiency virus disease. *Antimicrob Agents Chemother* 48: 4473-4475.
14. Tappero JW, Bradford WZ, Agerton TB, Hopewell P, Reingold AL, et al. (2005) Serum concentrations of antimycobacterial drugs in patients with pulmonary tuberculosis in Botswana. *Clin Infect Dis* 41: 461-469.

15. Choudhri SH, Hawken M, Gathua S, Minyiri GO, Watkins W, et al. (1997) Pharmacokinetics of antimycobacterial drugs in patients with tuberculosis, AIDS, and diarrhea. *Clin Infect Dis* 25: 104-111.
16. Burman WJ, Galliciano K, Peloquin C (1999) Therapeutic implications of drug interactions in the treatment of human immunodeficiency virus-related tuberculosis. *Clin Infect Dis* 28: 419-429.
17. Aaron L, Saadoun D, Calatroni I, Launay O, Mémain N, et al. (2004) Tuberculosis in HIV-infected patients: a comprehensive review. *Clin Microbiol Infect* 10: 388-398.
18. Derendorf H, Lesko LJ, Chaikin P, Colburn WA, Lee P, et al. (2000) Pharmacokinetic/pharmacodynamic modeling in drug research and development. *J Clin Pharmacol* 40: 1399-1418.
19. Kirby WM, Clarke JT, Libke RD, Regamey C (1976) Clinical pharmacology of amikacin and kanamycin. *J Infect Dis* 134 SUPPL: S312-315.
20. Coyne KM, Pozniak AL, Lamorde M, Boffito M (2009) Pharmacology of second-line antituberculosis drugs and potential for interactions with antiretroviral agents. *AIDS* 23: 437-446.
21. Yew WW, Cheung SW, Chau CH, Chan CY, Leung CK, et al. (1999) Serum pharmacokinetics of antimycobacterial drugs in patients with multidrug resistant tuberculosis during therapy. *Int J Clin Pharm Res* 19: 65-71.
22. Mugabo P, Taha E, Stander M, Hassan S, Moeti S, et al. (2009) Determination of plasma concentration using LC/MS and pharmacokinetics of ofloxacin in patients using multi-drug resistant tuberculosis and in patients co-infected with multi-drug resistant tuberculosis and HIV. 5th IAS Conference on HIV pathogenesis, Treatment and Prevention, Cape Town.
23. Niessen WM (1998) Analysis of antibiotics by liquid chromatography-mass spectrometry. *J Chromatogr A* 812: 53-75.
24. Peng GW, Gadalla MA, Peng A, Smith V, Chiou WL (1977) High-pressure liquid-chromatographic method for determination of gentamicin in plasma. *Clin Chem* 23: 1838-1844.
25. Doluiso JT, Dittert LW, LaPiana JC (1973) Pharmacokinetics of kanamycin following intramuscular administration. *J Pharmacokinetic Biopharm* 1: 253-265.
26. Cronk GA, Naumann DE (1959) The absorption and excretion of kanamycin in human beings. *J Lab Clin Med* 53: 888-895.
27. Clark SJ, Creighton S, Portmann B, Taylor C, Wendon JA, et al. (2002) Acute liver failure associated with antiretroviral treatment for HIV: a report of six cases. *J Hepatol* 36: 295-301.
28. Cabana BE, Taggart JG (1973) Comparative pharmacokinetics of BB-K8 and kanamycin in dogs and humans. *Antimicrob Agents Chemother* 3: 478-483.
29. Peloquin CA, Nitta AT, Burman WJ, Brudney KF, Miranda-Massari JR, et al. (1996) Low antituberculosis drug concentrations in patients with AIDS. *Ann Pharmacother* 30: 919-925.
30. Weyer K (2005) Multidrug-resistant tuberculosis. *Continuing Medical Education Journal* 23: 75-84.
31. Gurumurthy P, Ramachandran G, Hemanth Kumar AK, Rajasekaran S, Padmapriyadarsini C, et al. (2004) Malabsorption of rifampin and isoniazid in HIV-infected patients with and without tuberculosis. *Clin Infect Dis* 38: 280-283.
32. Mehvar R (2004) The relationship among pharmacokinetic parameters: effect of altered kinetics on the drug plasma concentration-time profiles. *Am J Pharm Educ* 8: 1-9.
33. Gemtholtz TE, Goetsch SJ, Katz I (2006) HIV-related nephropathy: a South African perspective. *Kidney Int* 69: 1885-1891.
34. Roe J, Campbell LJ, Ibrahim F, Hendry BM, Post FA (2008) HIV care and the incidence of acute renal failure. *Clin Infect Dis* 47: 242-249.
35. Leventhal JS, Ross MJ (2008) Pathogenesis of HIV-associated nephropathy. *Semin Nephrol* 28: 523-534.
36. Yew WW (2001) Therapeutic drug monitoring in antituberculosis chemotherapy: clinical perspectives. *Clin Chim Acta* 313: 31-36.
37. Burgess DS (1999) Pharmacodynamic principles of antimicrobial therapy in the prevention of resistance. *Chest* 115: 19S-23S.
38. Berning SE, Huit GA, Iseman MD, Peloquin CA (1992) Malabsorption of antituberculosis medications by a patient with AIDS. *N Engl J Med* 327: 1817-1818.
39. Arbex MA, Varella Mde C, Siqueira HR, Mello FA (2010) Antituberculosis drugs: drug interactions, adverse effects, and use in special situations. Part 2: second line drugs. *J Bras Pneumol* 36: 641-656.
40. Nuermberger E, Grosset J (2004) Pharmacokinetic and pharmacodynamic issues in the treatment of mycobacterial infections. *Eur J Clin Microbiol Infect Dis* 23: 243-255.
41. Nicolau DP (2003) Optimizing outcomes with antimicrobial therapy through pharmacodynamic profiling. *J Infect Chemother* 9: 292-296.
42. Douglas JG, McLeod MJ (1999) Pharmacokinetic factors in the modern drug treatment of tuberculosis. *Clin Pharmacokinet* 37: 127-146.
43. Turnidge J (2003) Pharmacodynamics and dosing of aminoglycosides. *Infect Dis Clin North Am* 17: 503-528.

Citation: Mugabo P, Abaniwonda MI, Theron D, van Zyl L, Hassan SM, et al., (2015) Determination of Kanamycin Plasma Levels Using LC-MS and Its Pharmacokinetics in Patients with Multidrug- Resistant Tuberculosis with and without HIV-Infection. *Biochem Pharmacol (Los Angel)* 4: 160. doi:[10.4172/2167-0501.1000160](https://doi.org/10.4172/2167-0501.1000160)

Submit your next manuscript and get advantages of OMICS Group submissions

Unique features:

- User friendly/feasible website-translation of your paper to 50 world's leading languages
- Audio Version of published paper
- Digital articles to share and explore

Special features:

- 400 Open Access Journals
- 30,000 editorial team
- 21 days rapid review process
- Quality and quick editorial, review and publication processing
- Indexing at PubMed (partial), Scopus, EBSCO, Index Copernicus and Google Scholar etc
- Sharing Option: Social Networking Enabled
- Authors, Reviewers and Editors rewarded with online Scientific Credits
- Better discount for your subsequent articles

Submit your manuscript at: <http://www.omicsonline.org/submission>