

Anexo I - Ilustrações

Anexo I.I – Morfologia

Figura I - Louças de cozinha: tigela e taça

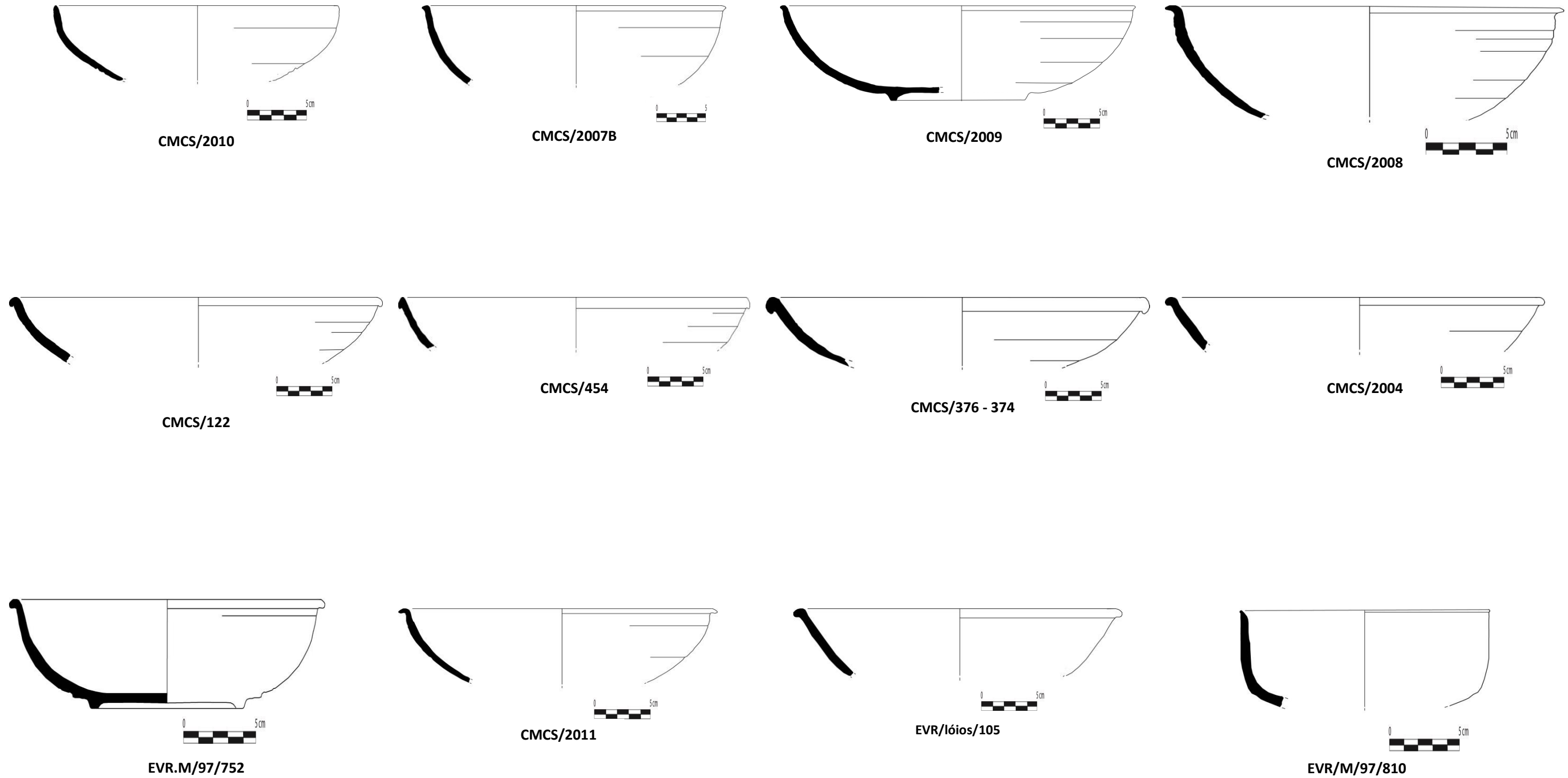


Figura II – Louças de cozinha: tigela

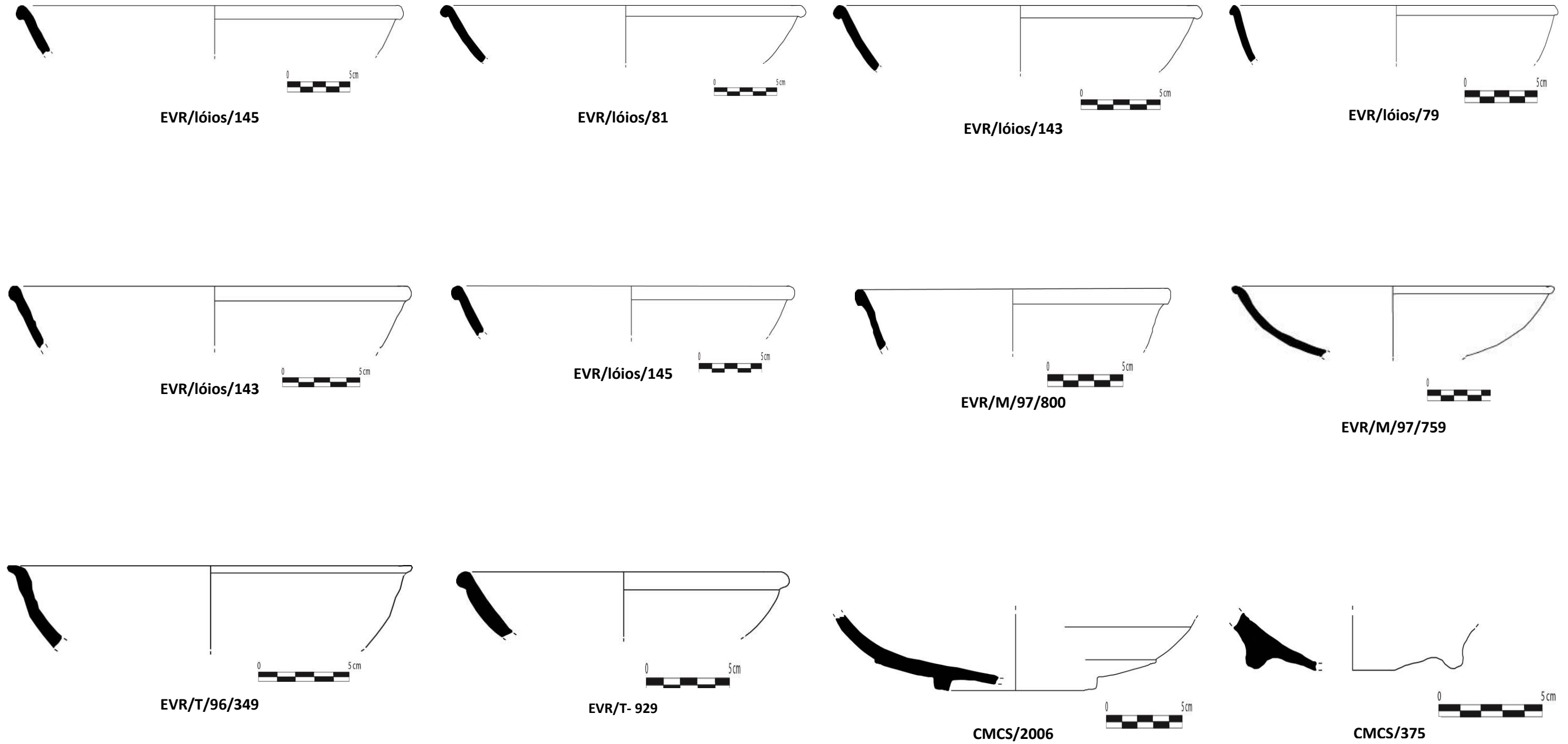


Figura III – Louça de mesa: jarrinha, jarro e bilha

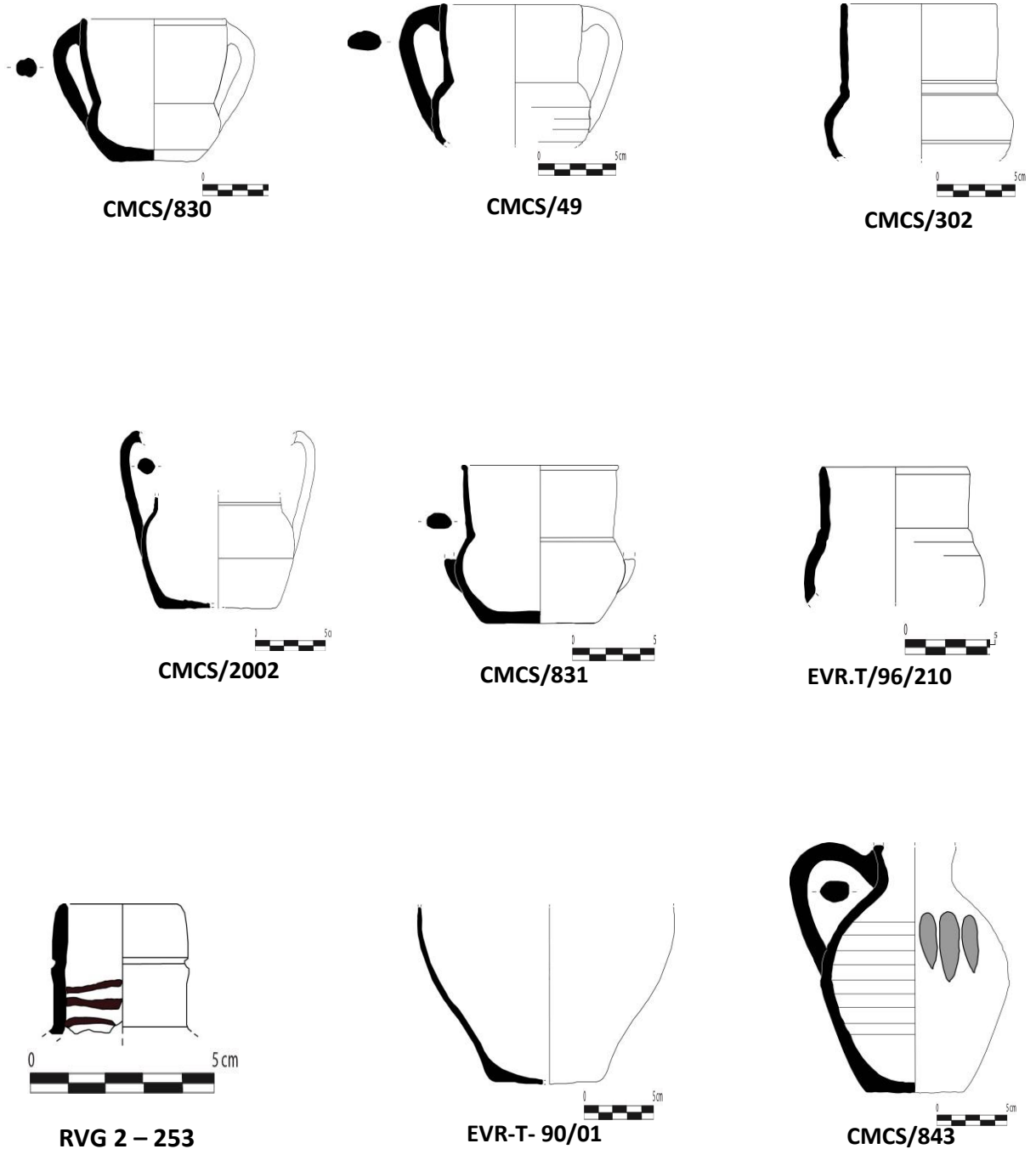


Figura IV – Louça de cozinha: Panela

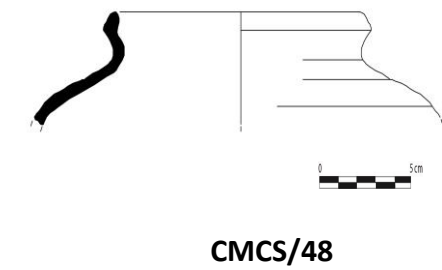
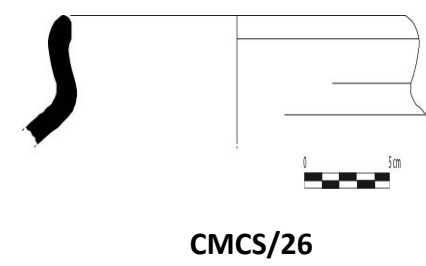
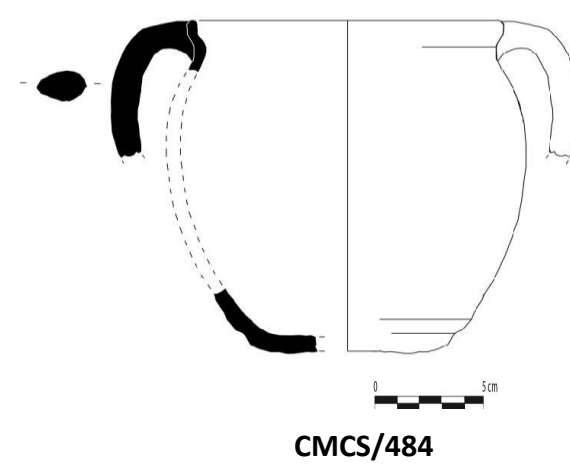
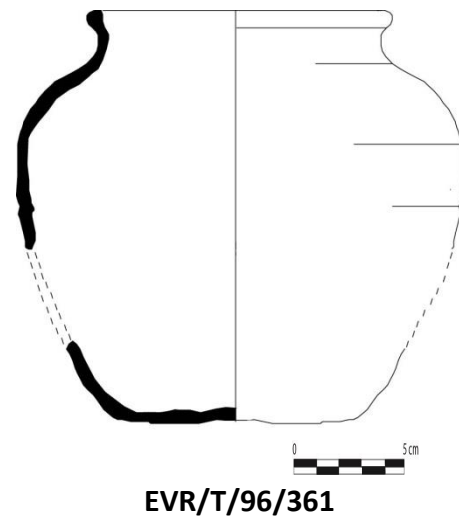
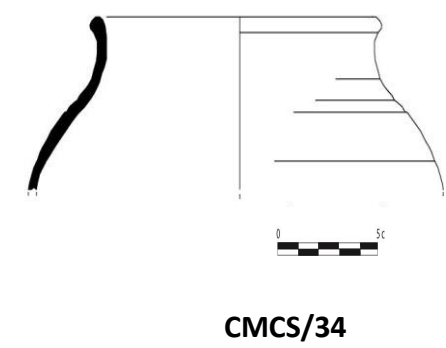
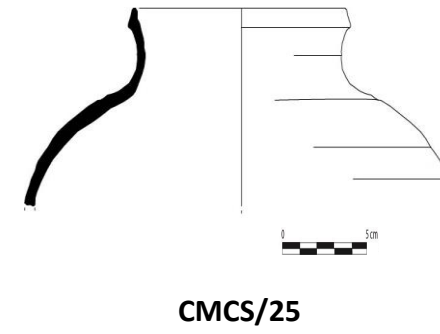
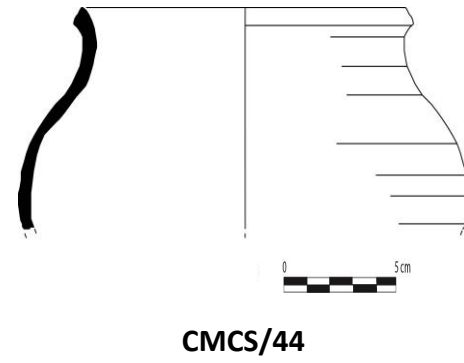
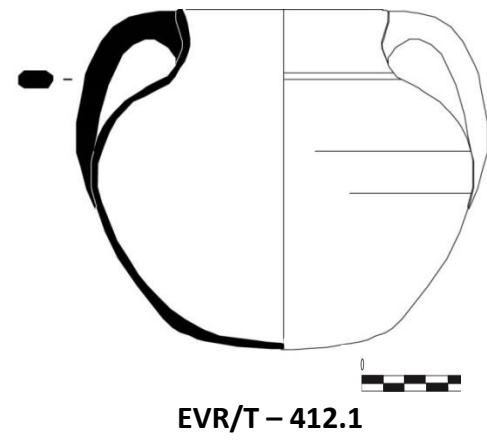


Figura V – Louça de cozinha: Panela

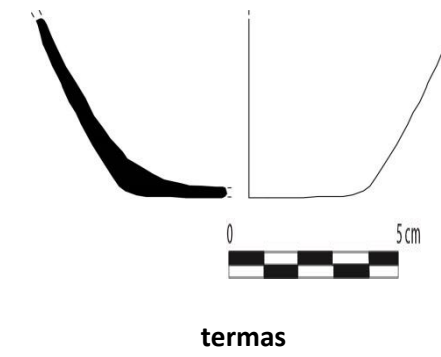
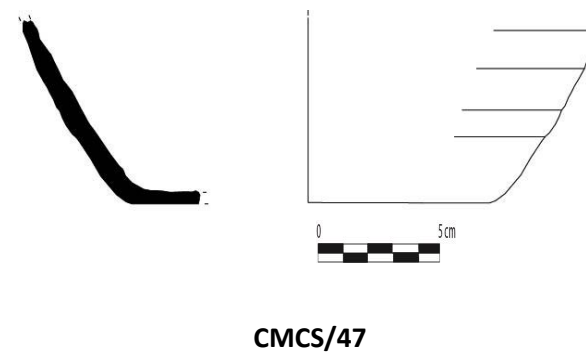
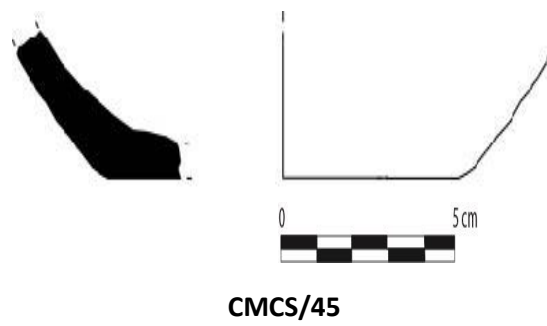
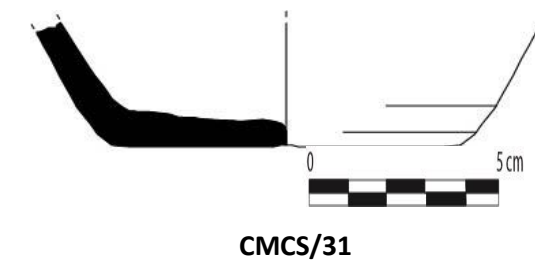
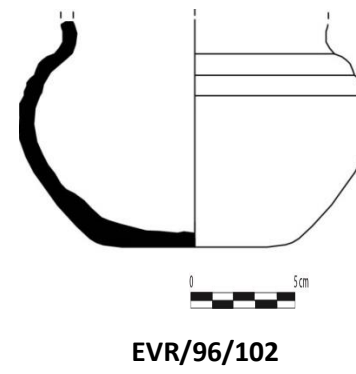
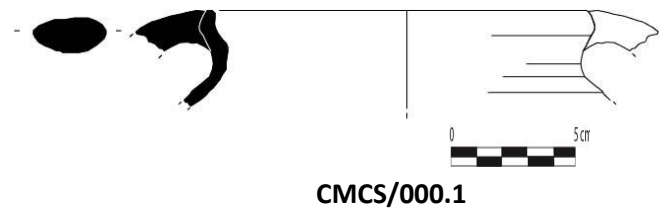


Figura VI – Louça de cozinha: alguidar

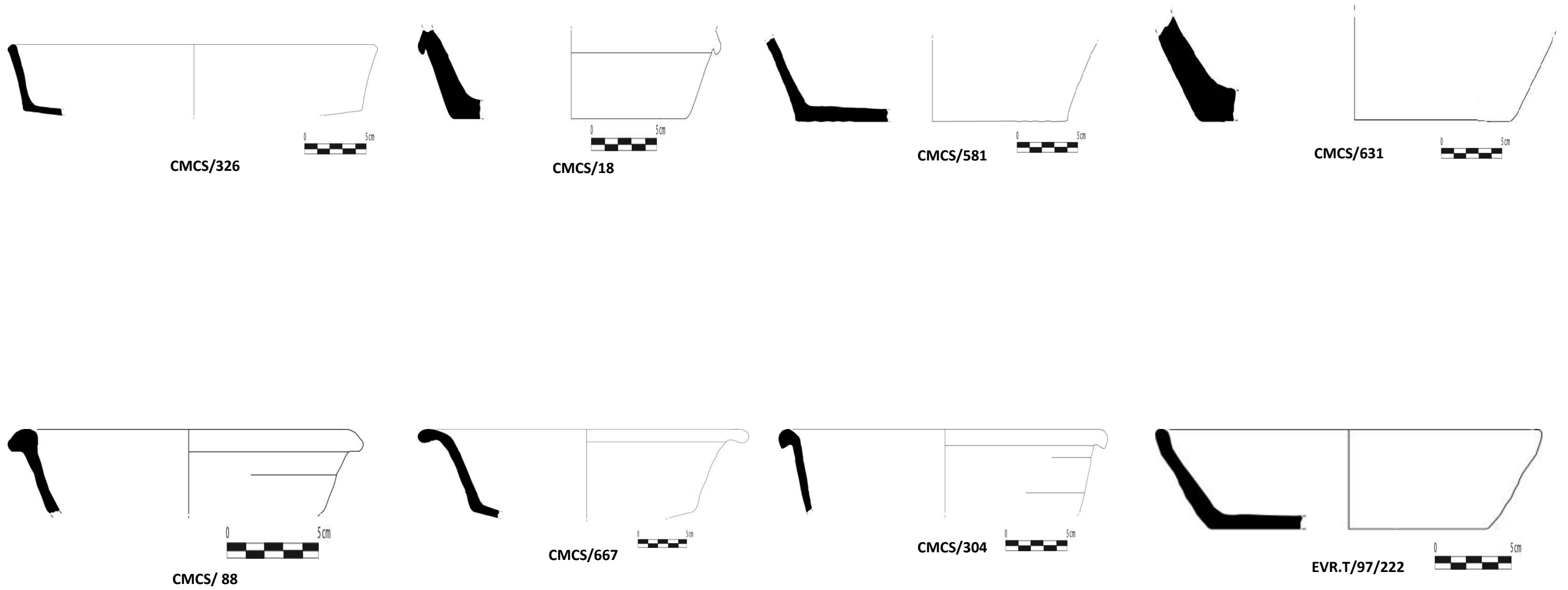
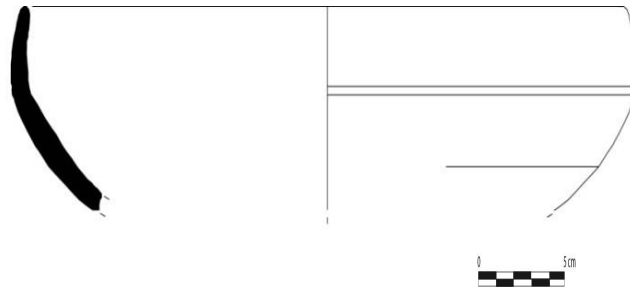
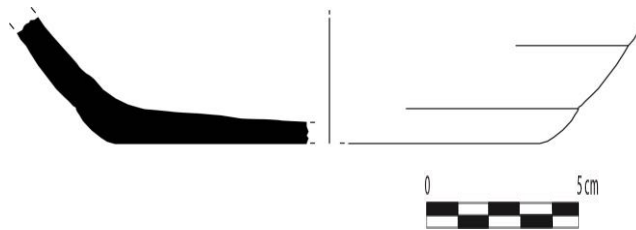


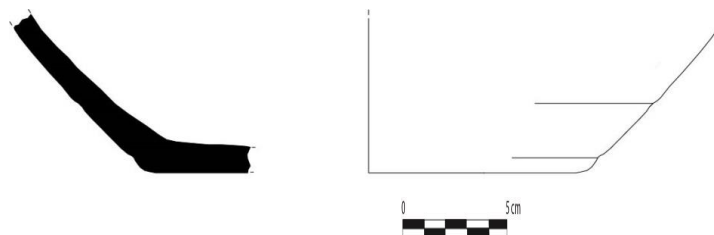
Figura VII – Louça de cozinha: caçoila



CMCS/455



CMCS/12



CMCS/36

Figura VIII – Objectos de iluminação: Candil

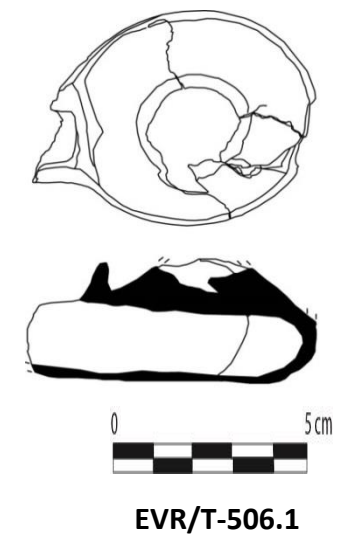
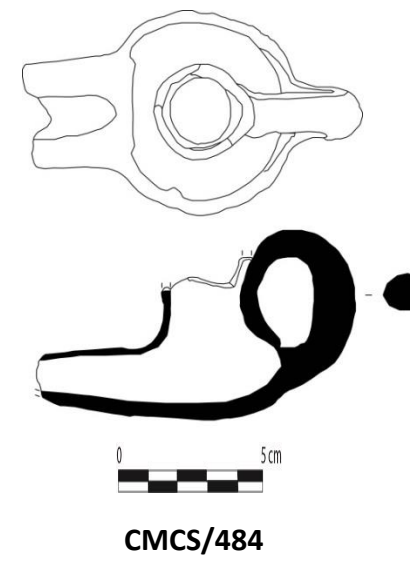
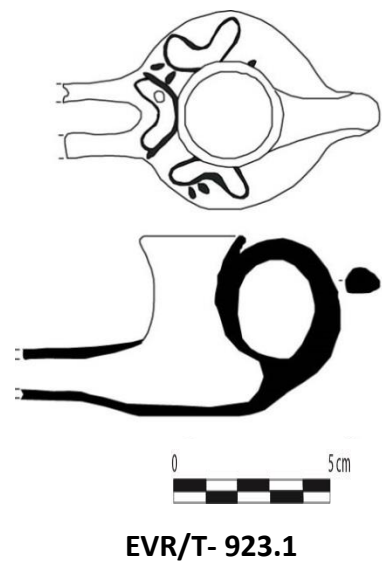
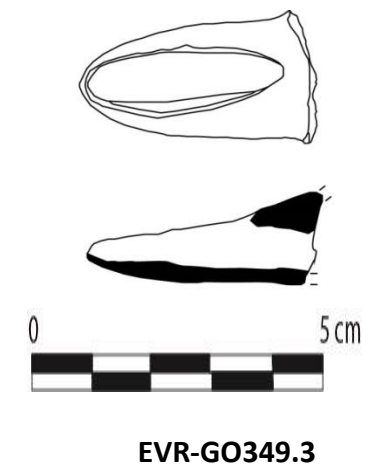
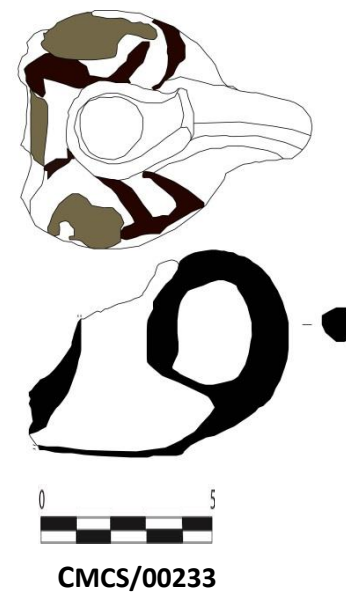
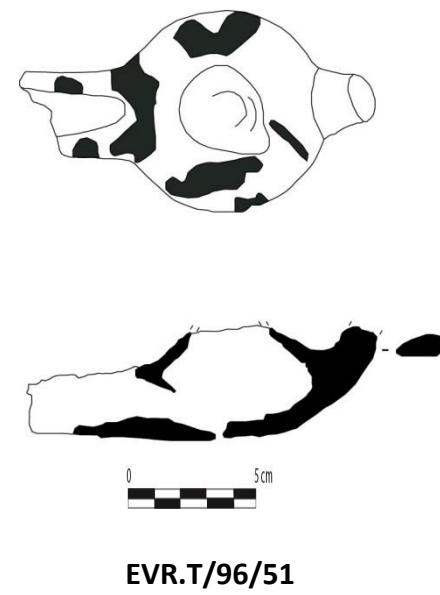
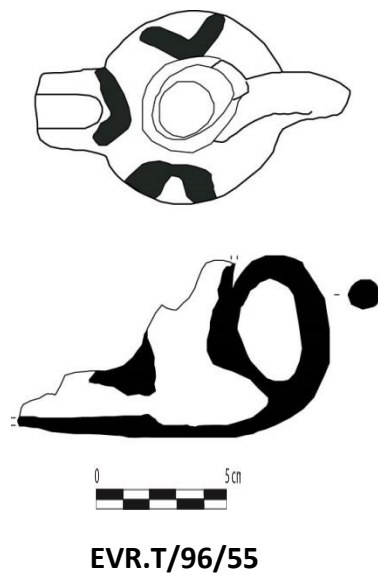


Figura IX - Louça de armazenamento e transporte: Pote

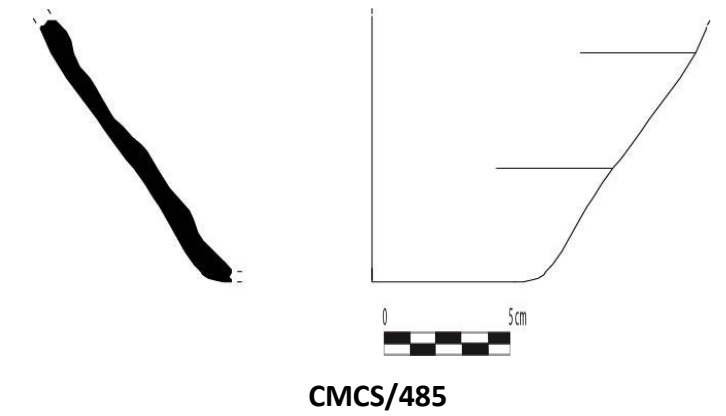
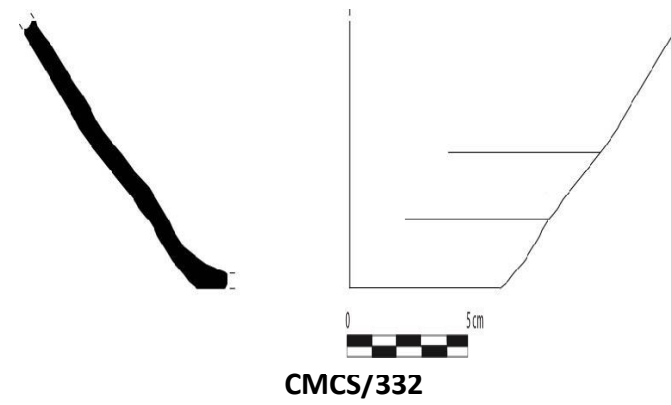
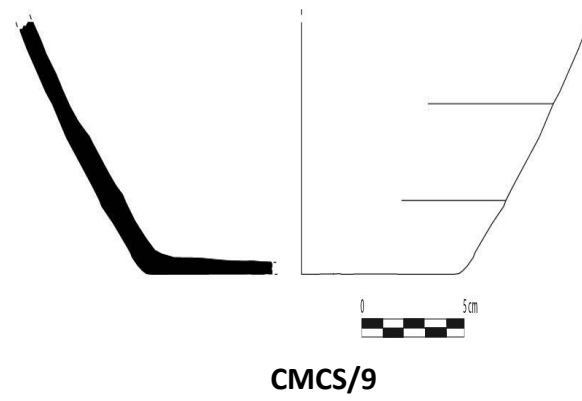
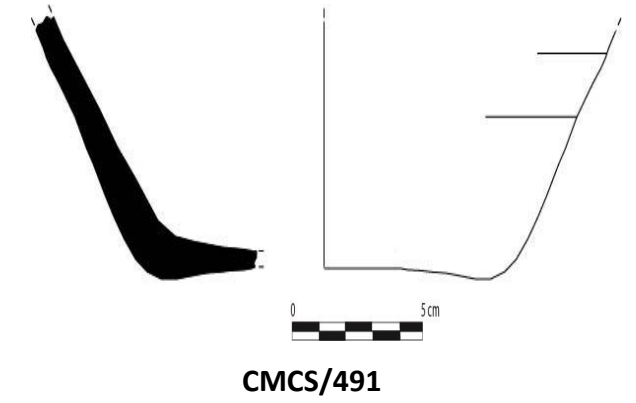
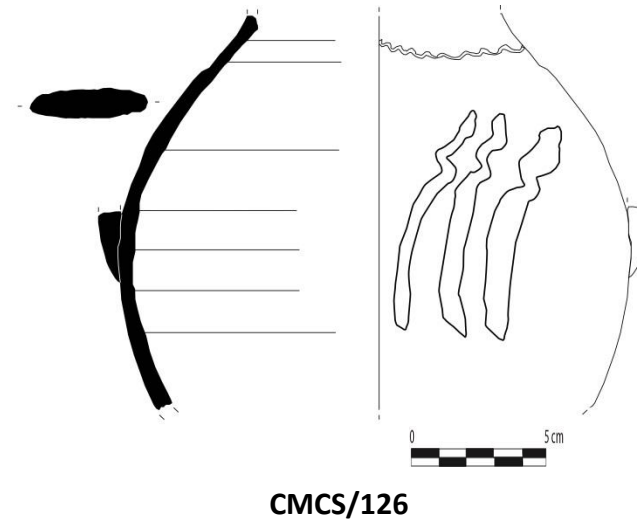
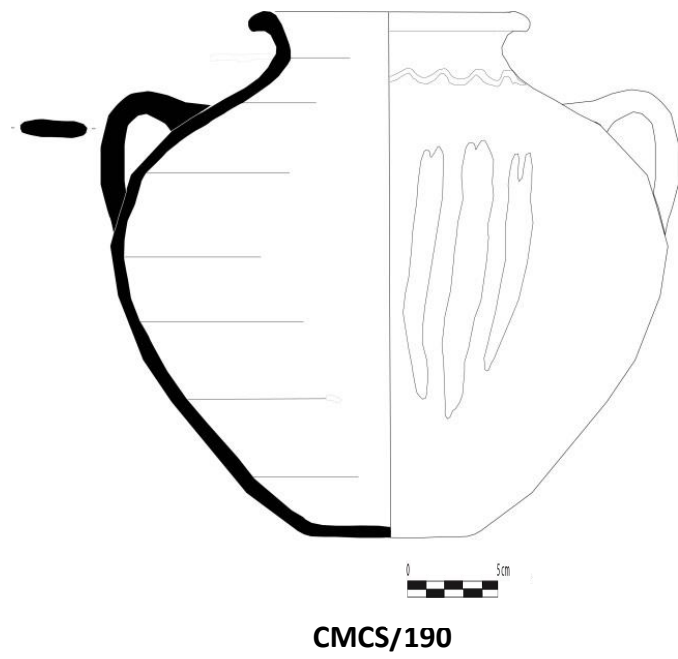


Figura X - Louça de armazenamento e transporte:
Cântaro e talha

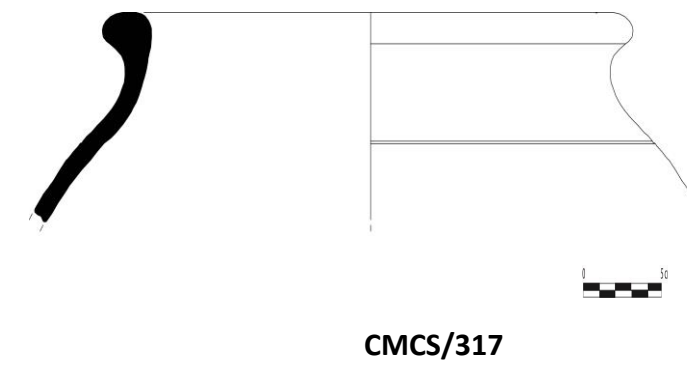
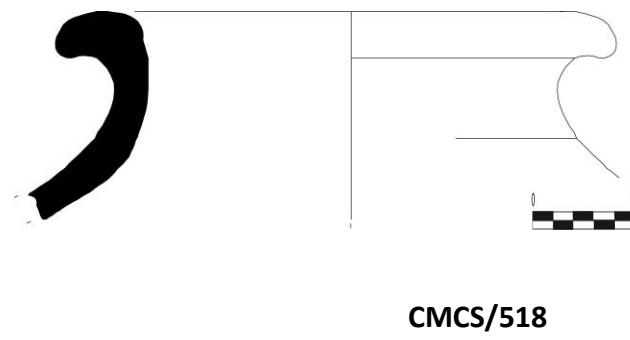
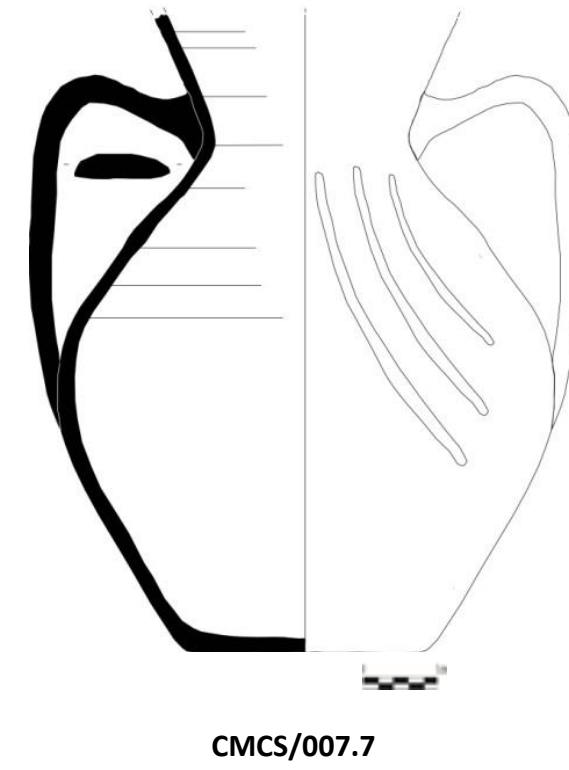
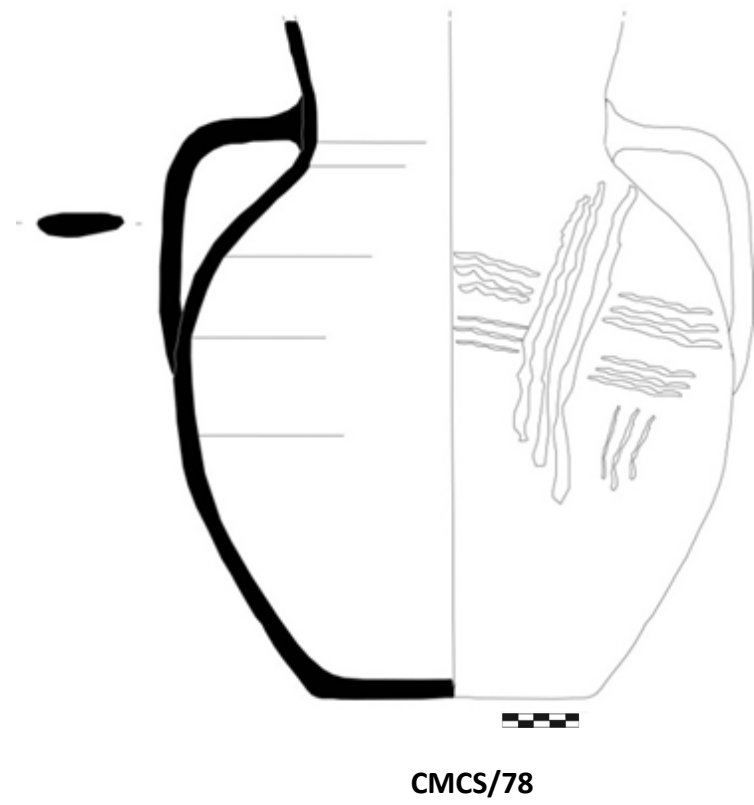


Figura XI – Objectos agrícola e do quotidiano (cerâmica, metal, osso)

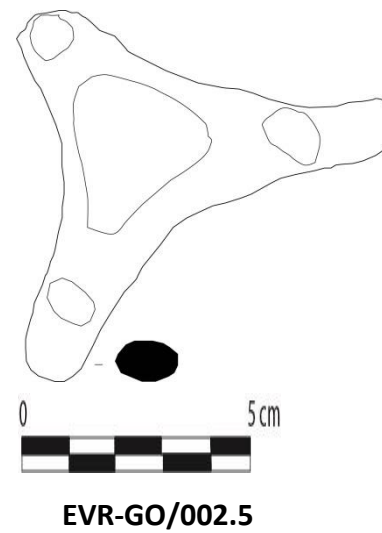
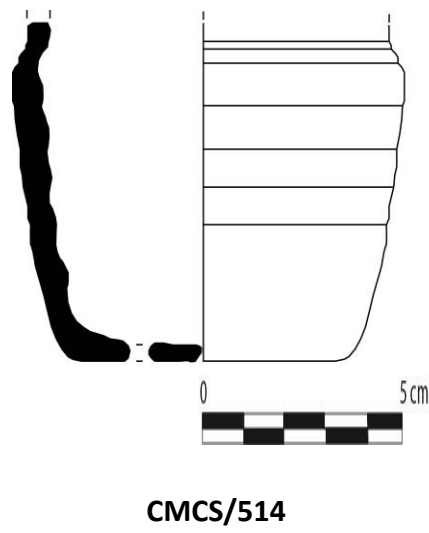
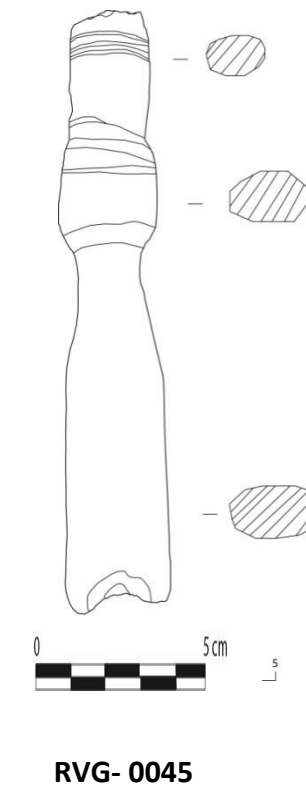
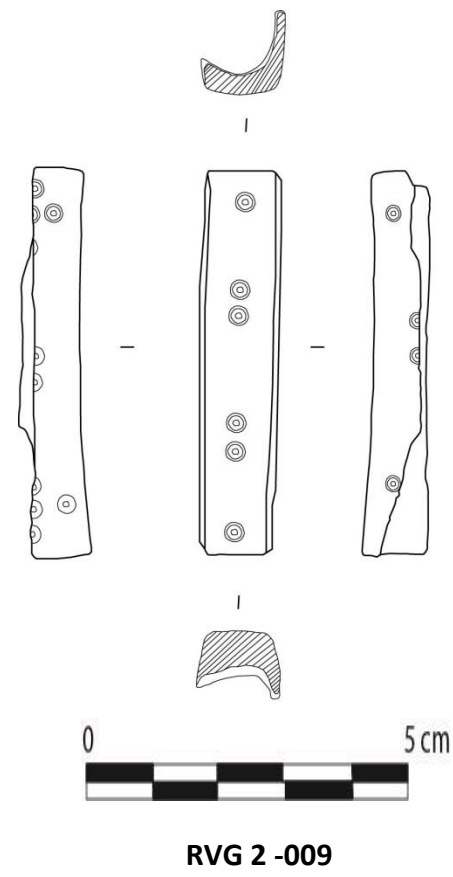
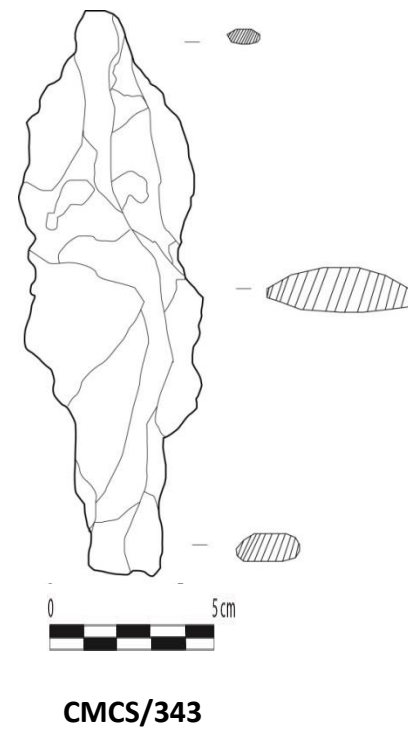
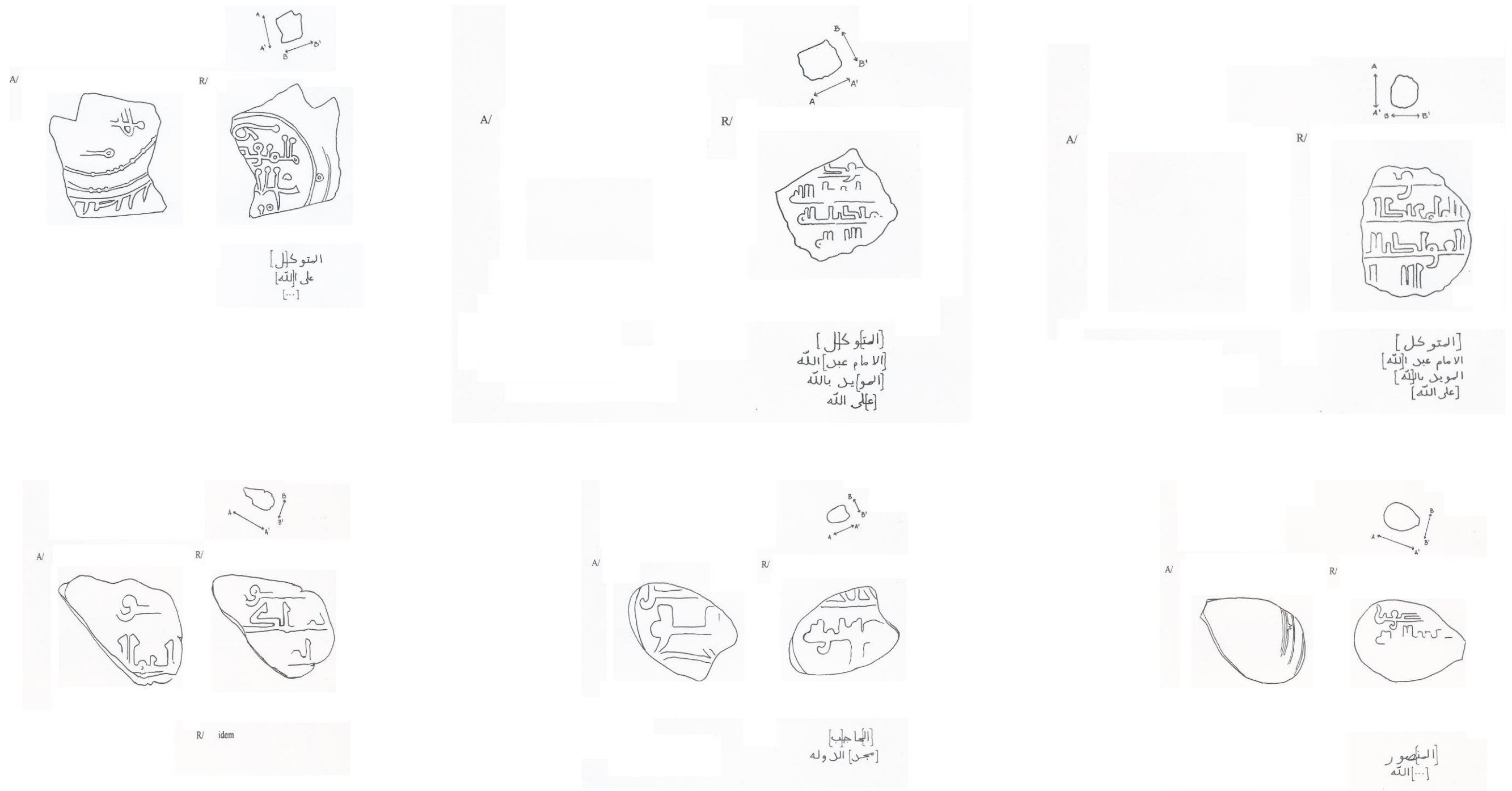
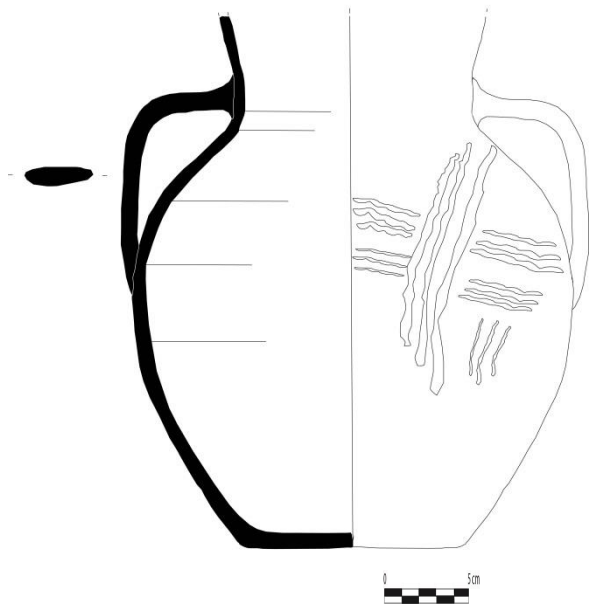


Figura XII – Moeda (ilustrações de Artur Gullart)

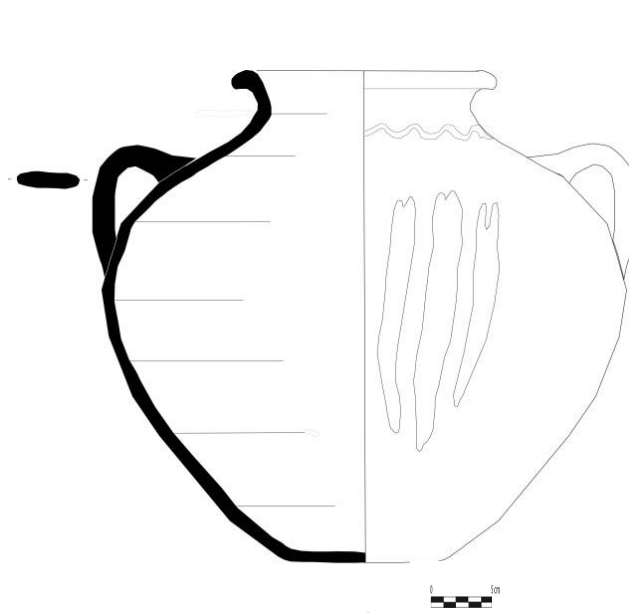


Anexo I.II – Ornamentação

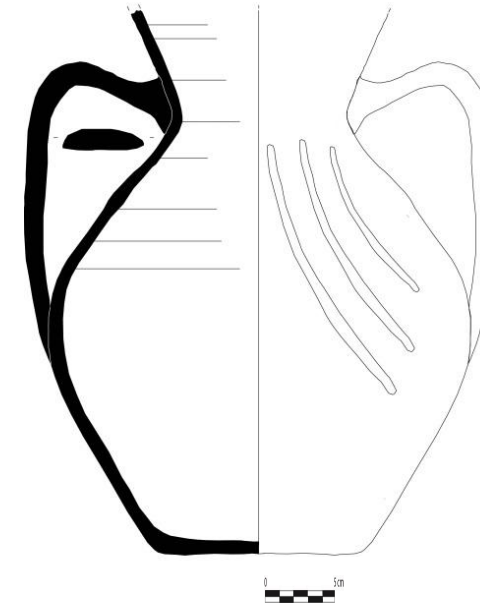
Figura XIII – Pintura a branco e Vermelho



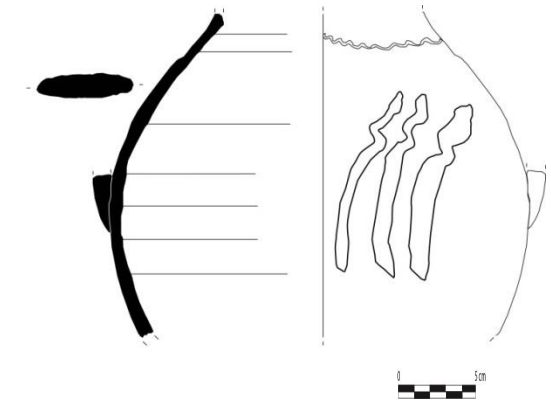
CMSC/1020



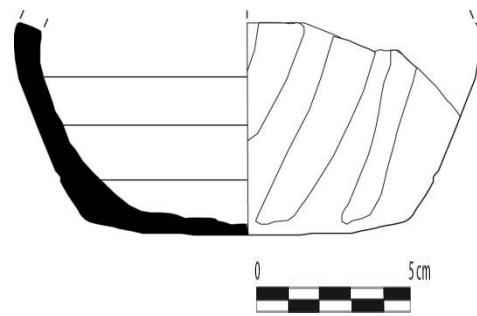
CMCS/929



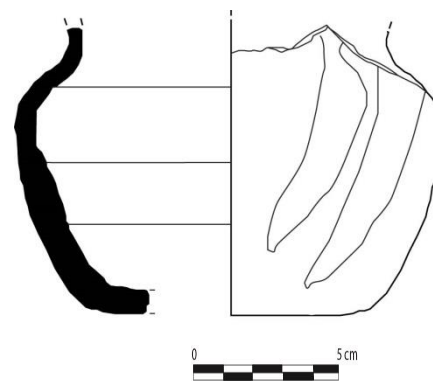
CMCS/932



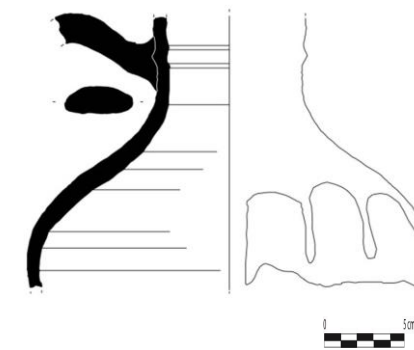
CMCS/126



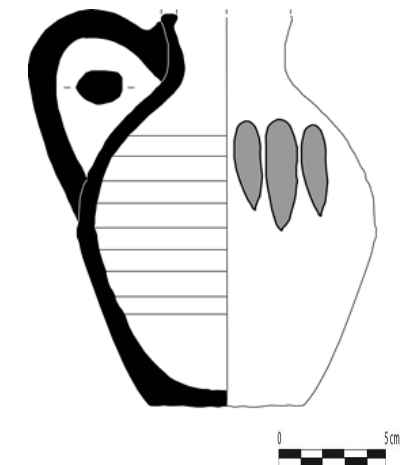
EVR.T/97/833(2)



EVR.T/97/833



CMCS/515



CMCS/843

Figura XIV - Decoração bicromática - melado e negro

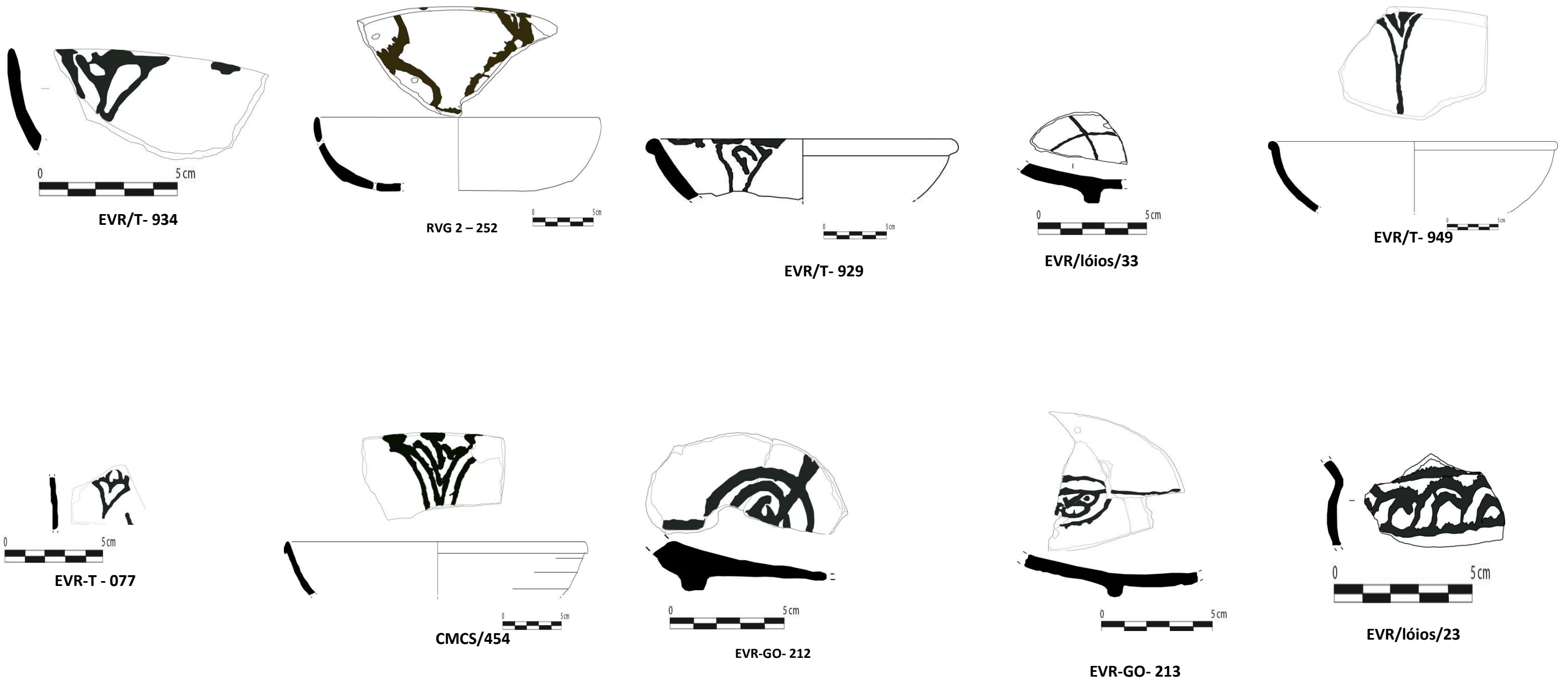
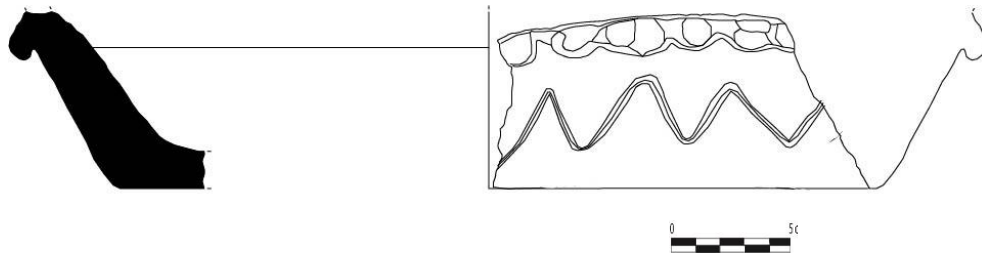
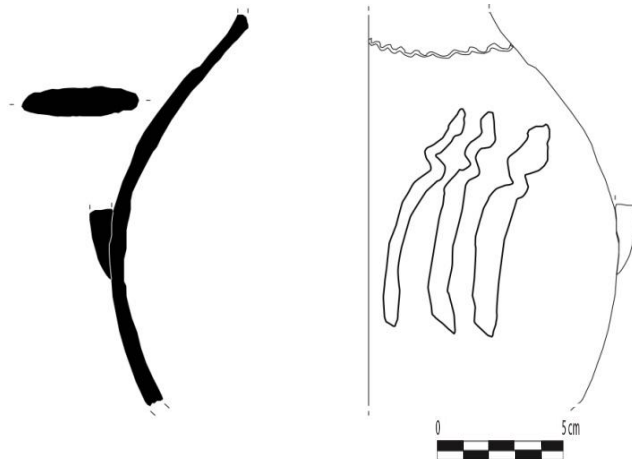
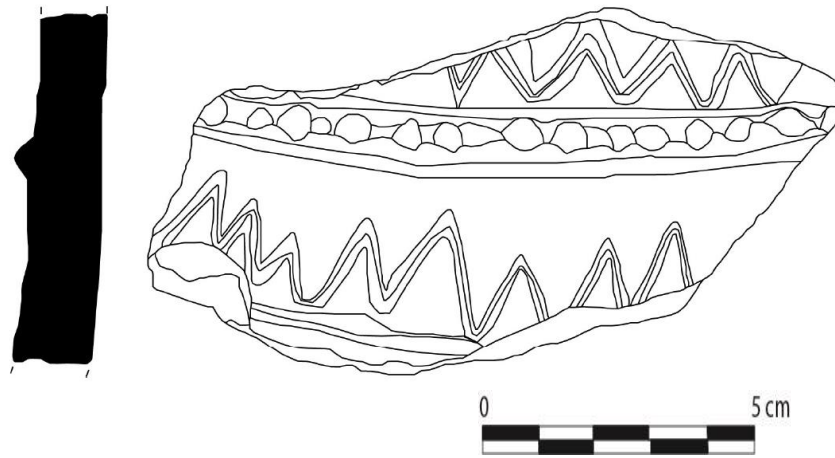


Figura XV– Decoração Incisa e Plástica



CMCS/18



CMCS/126

Figura XVI – Verde e Manganês, Motivos Antropomórficos

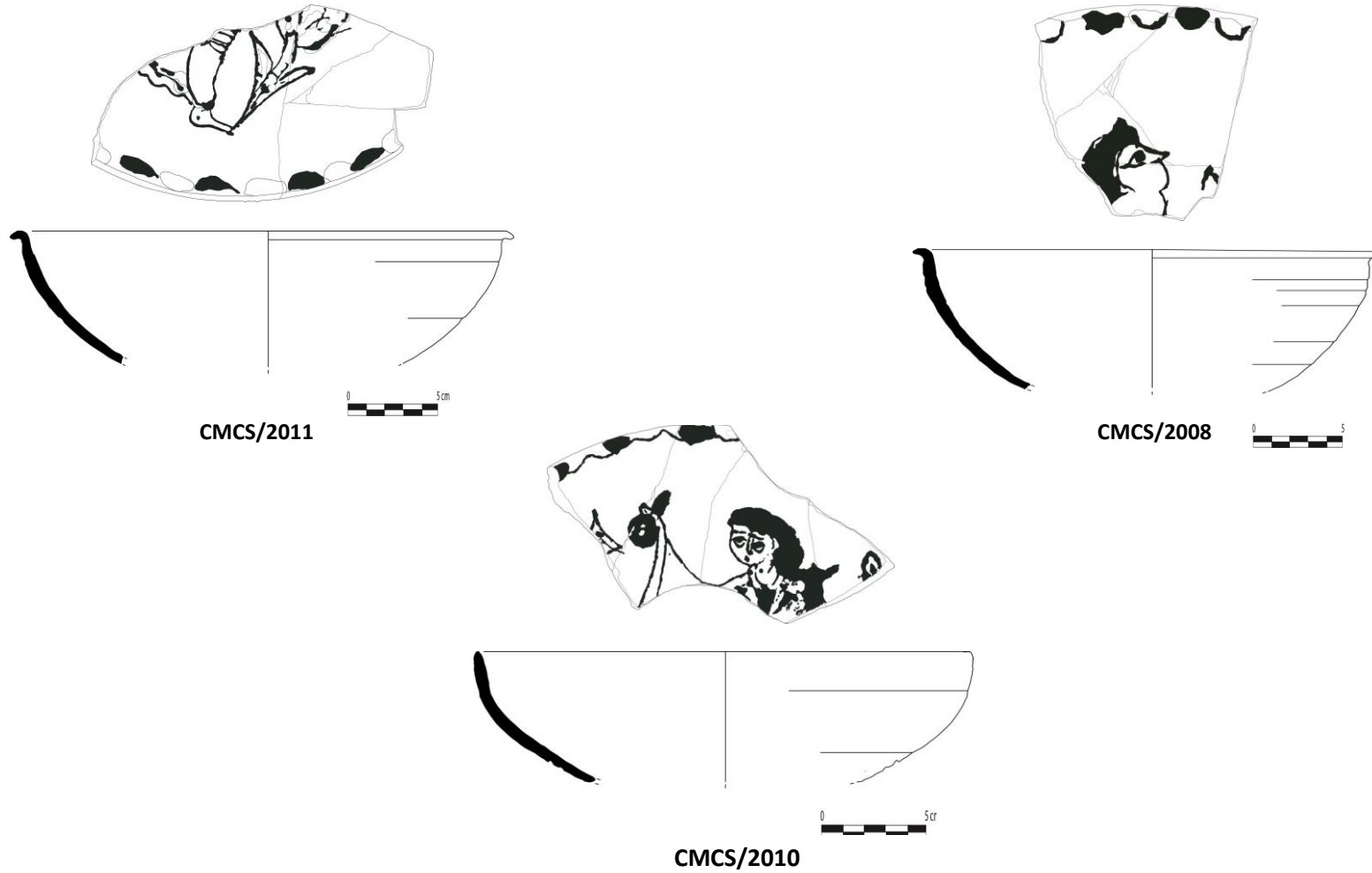
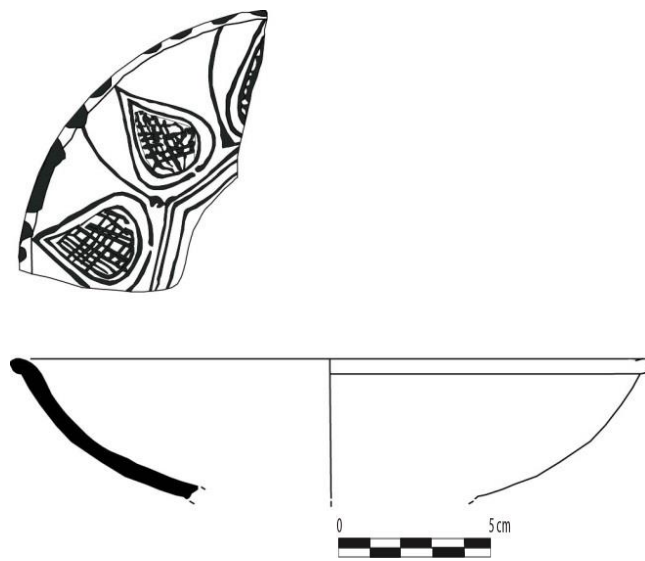
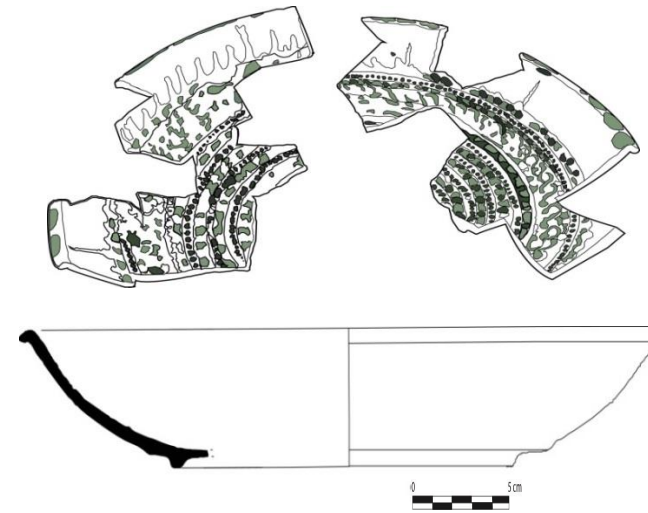


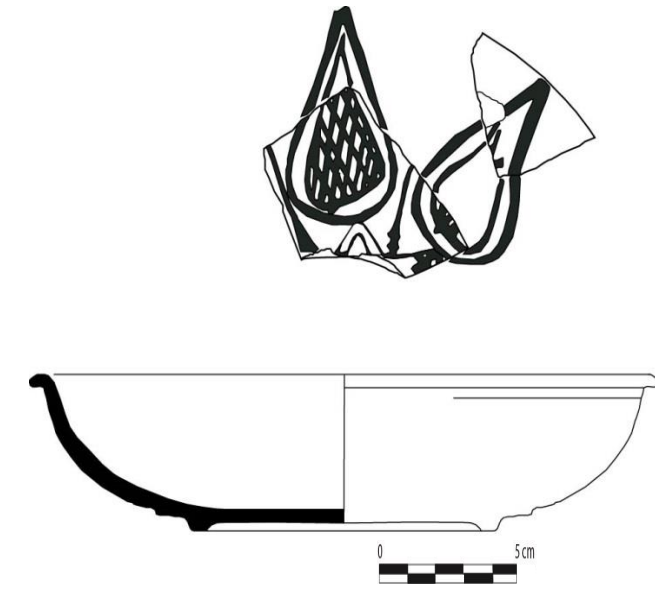
Figura XVII - Verde e Manganês: Motivos Fitomórficos e Geométricos



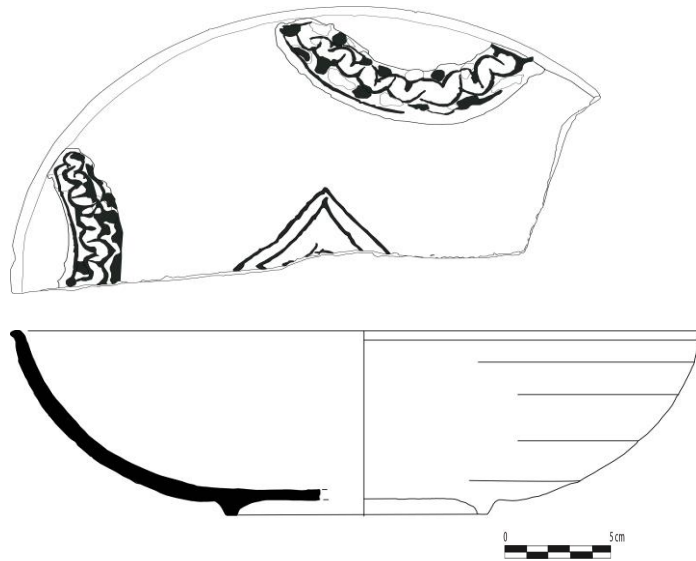
EVR.M/97/752



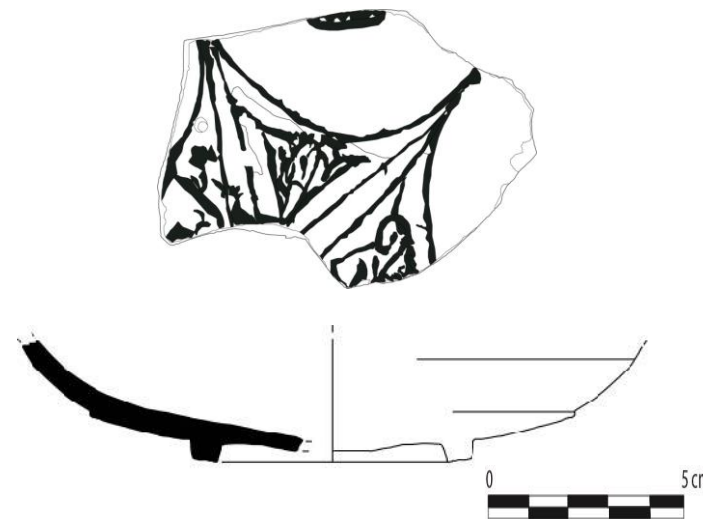
RVG 2 – 252



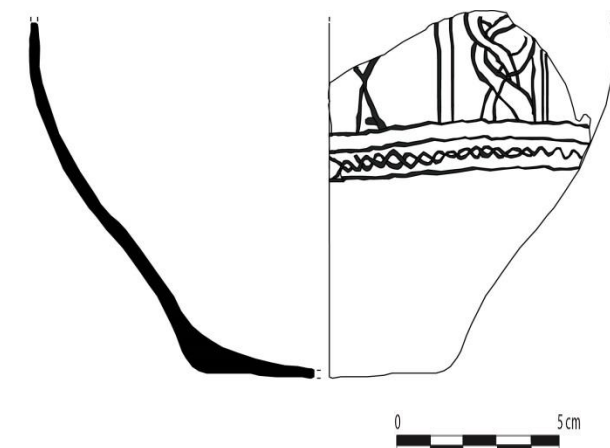
EVR/T- 220



CMCS/2009

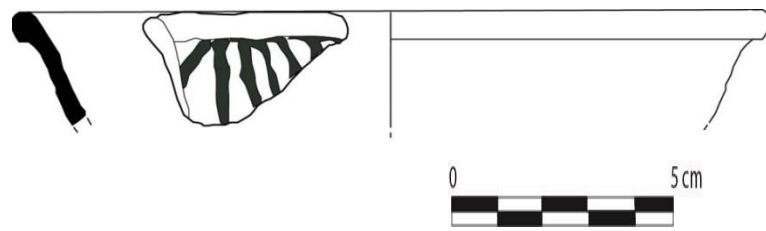


CMCS/2006

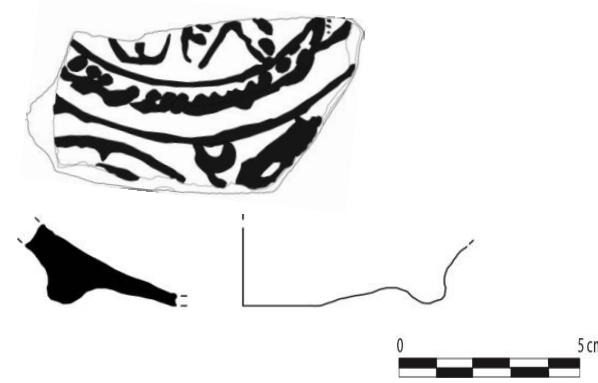


EVR-T- 90/01

Figura XVIII - Verde e Manganês: Motivos Fitomórficos e Geométricos



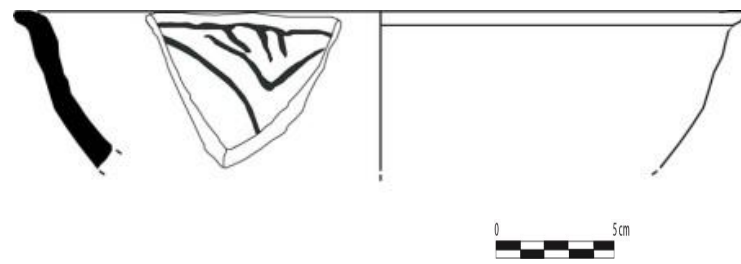
EVR.T/97/800



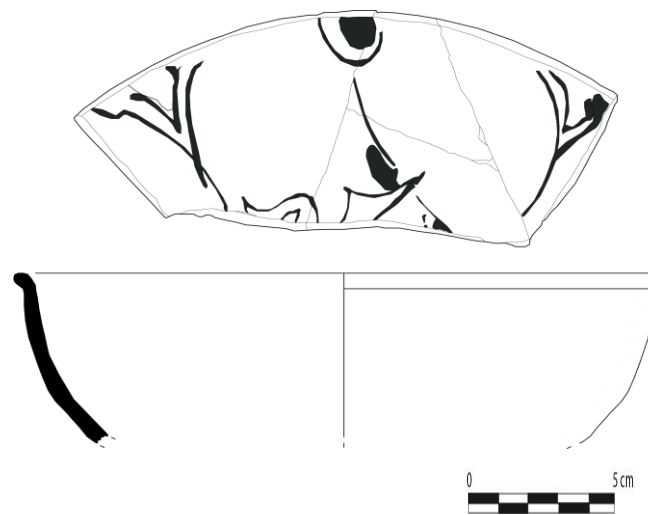
CMCS/375



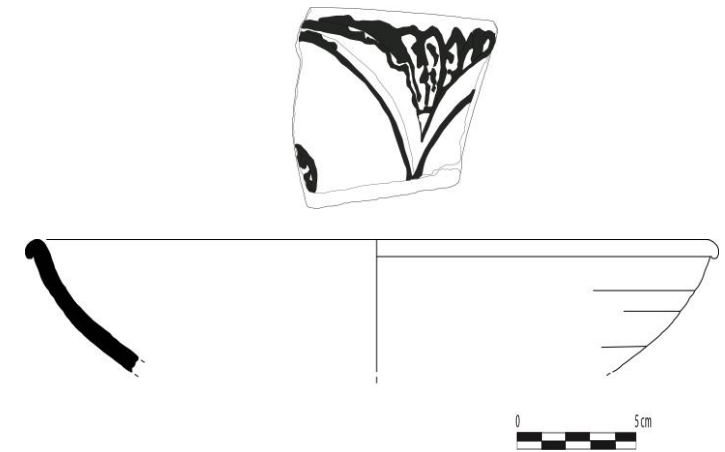
EVR/T- 331



EVR.T/96/349

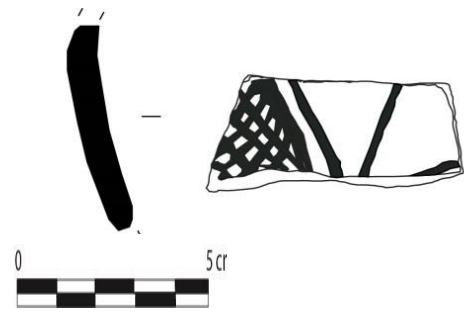


CMCS/622

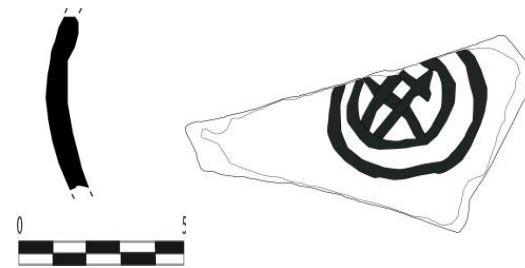


CMCS/122

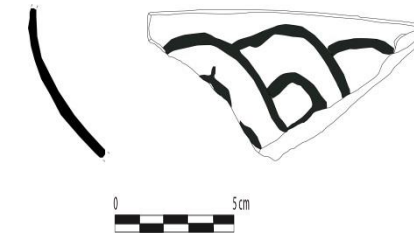
Anexo XIX - Verde e Manganês: Motivos Fitomórficos e Geométricos



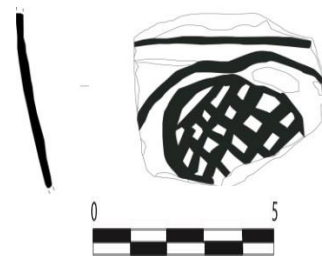
EVR/lóios/231



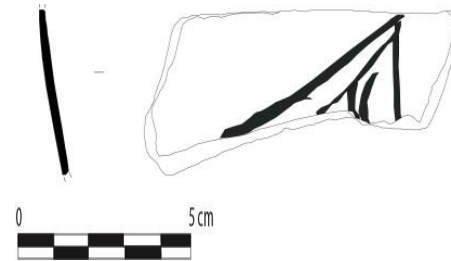
EVR/T/761



EVR/T-336



EVR/T-451



EVR/T-332.1



CMCS/0010



EVR.M/97/759



EVR.T/96/291

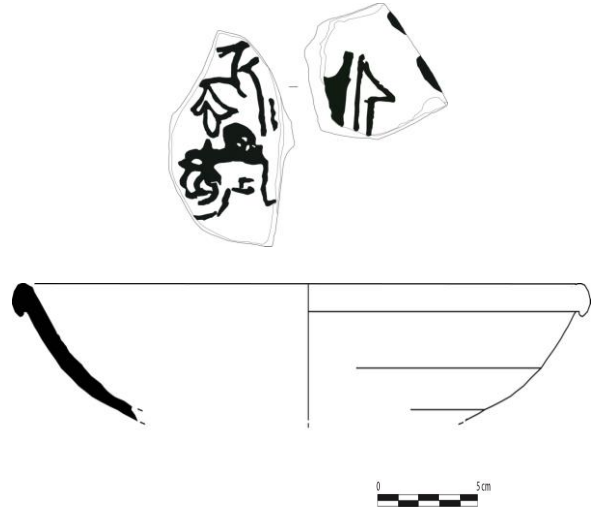


EVR/T-442

Figura XX – Verde e manganês e carimbo. Motivos epigráficos



EVR.M/97/810



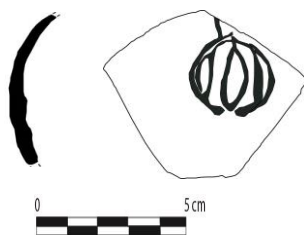
CMCS/376 - 374



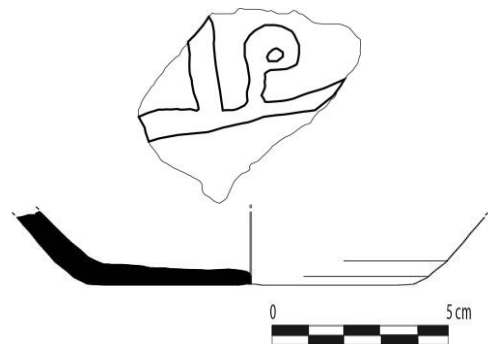
CMCS/ 2003



EVR/lóios/148



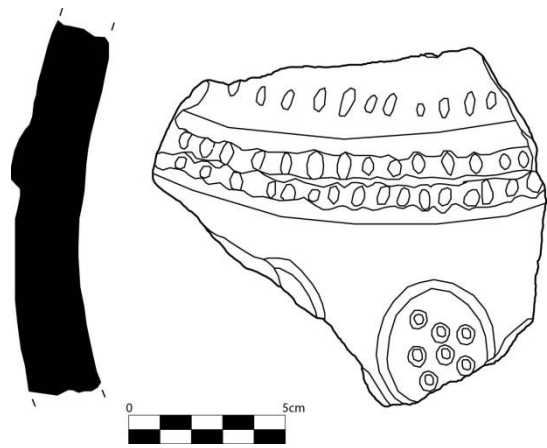
EVR-T-196/2



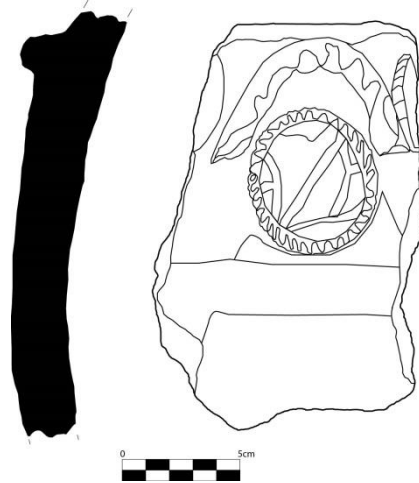
CMCS/260

Anexo I.III – Cerâmica do Séc. XII

Figura XXI – Cerâmica islâmica de Évora (século XII)



EVR- Log. 225/96



EVR- Log. 224/96



SCE/01/86



EVR-T-90-85



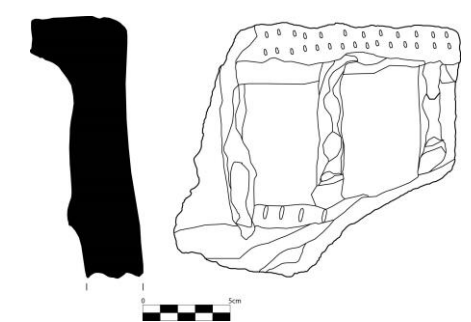
TLP – 51/ C5 a4



EVR.T/97/833

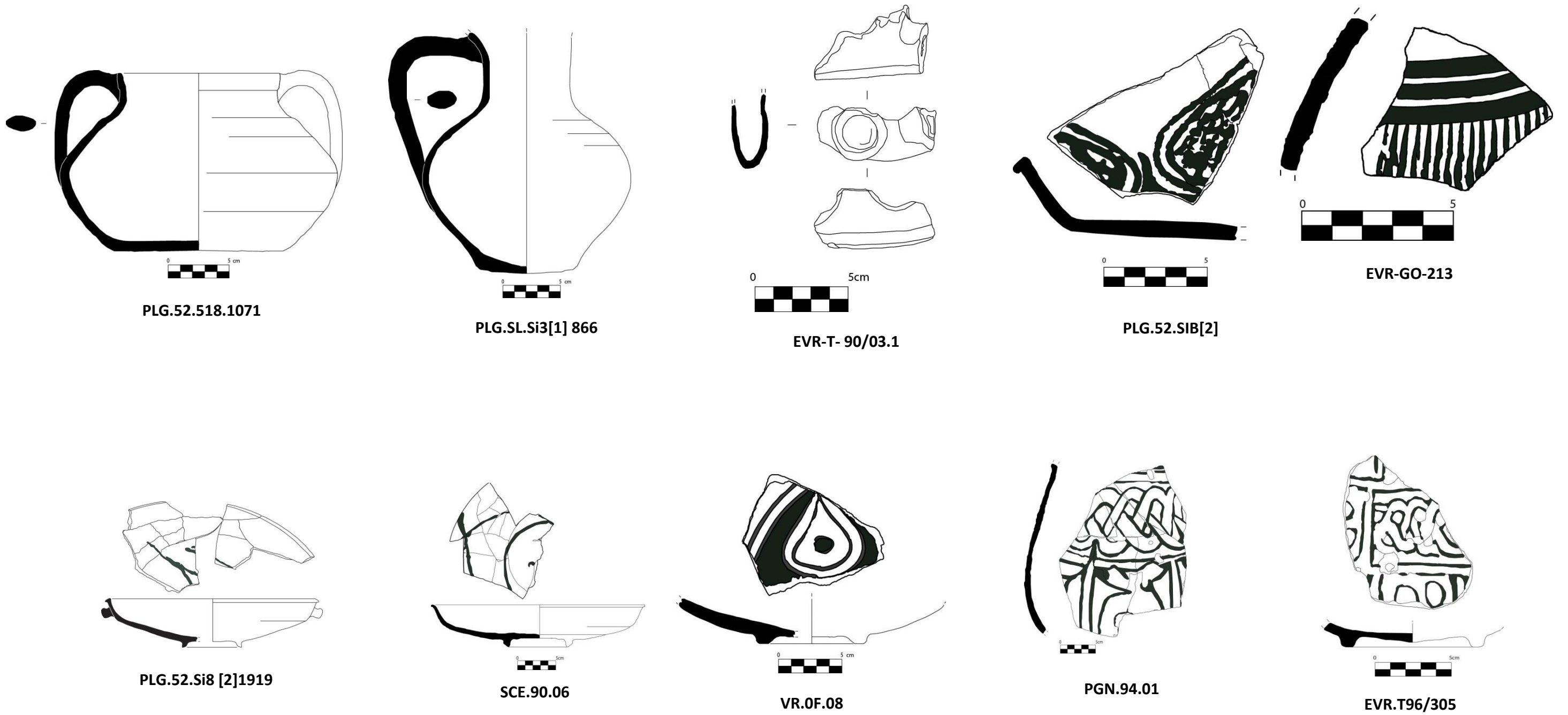


TLP- 55/C1-4



EVR- Log. 258/90

Figura XXII – Cerâmica islâmica de Évora (século XII)



José Rui Santos

Um olhar sobre o quotidiano de Évora no período medieval – islâmico. Séculos VIII a XI