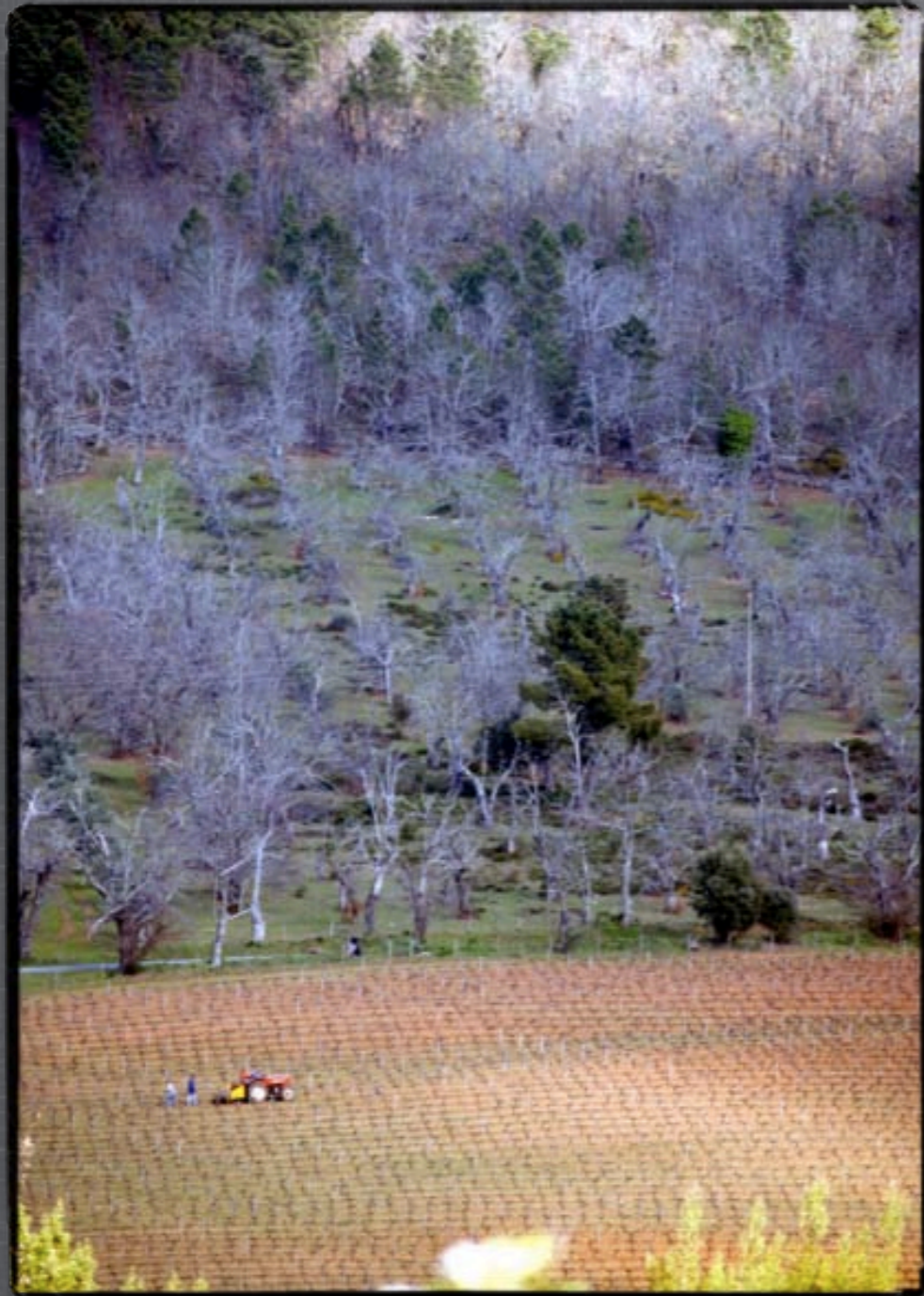




**INTERNATIONAL CONFERENCE  
*LANDSCAPES OF EVERYDAY LIFE*  
Perpignan – Girona March 2011**

**Pinto-Correia T., Barroso F., Menezes H., Silva J. and Michelin Y.**



**Landscape management  
with a nature concern:  
the role of a Natura 2000  
classification in  
awareness raising of  
land owners for the  
provision of public goods**

**...from space of production  
to space also of consumption and protection**

**in rural landscapes, many other goods and services  
besides production are expected today**

**cultural heritage**

**environmental balance**

**quality production**

**identity**

**recreation**

**nature conservation**

**recipient**

**life quality**

**aesthetic appreciation**



## ...in Mediterranean landscapes of extensive land use systems

as in other peripheral landscapes,  
where amenity values depend strongly  
on land use systems in place,  
but these are not competitive in a  
globalized market context

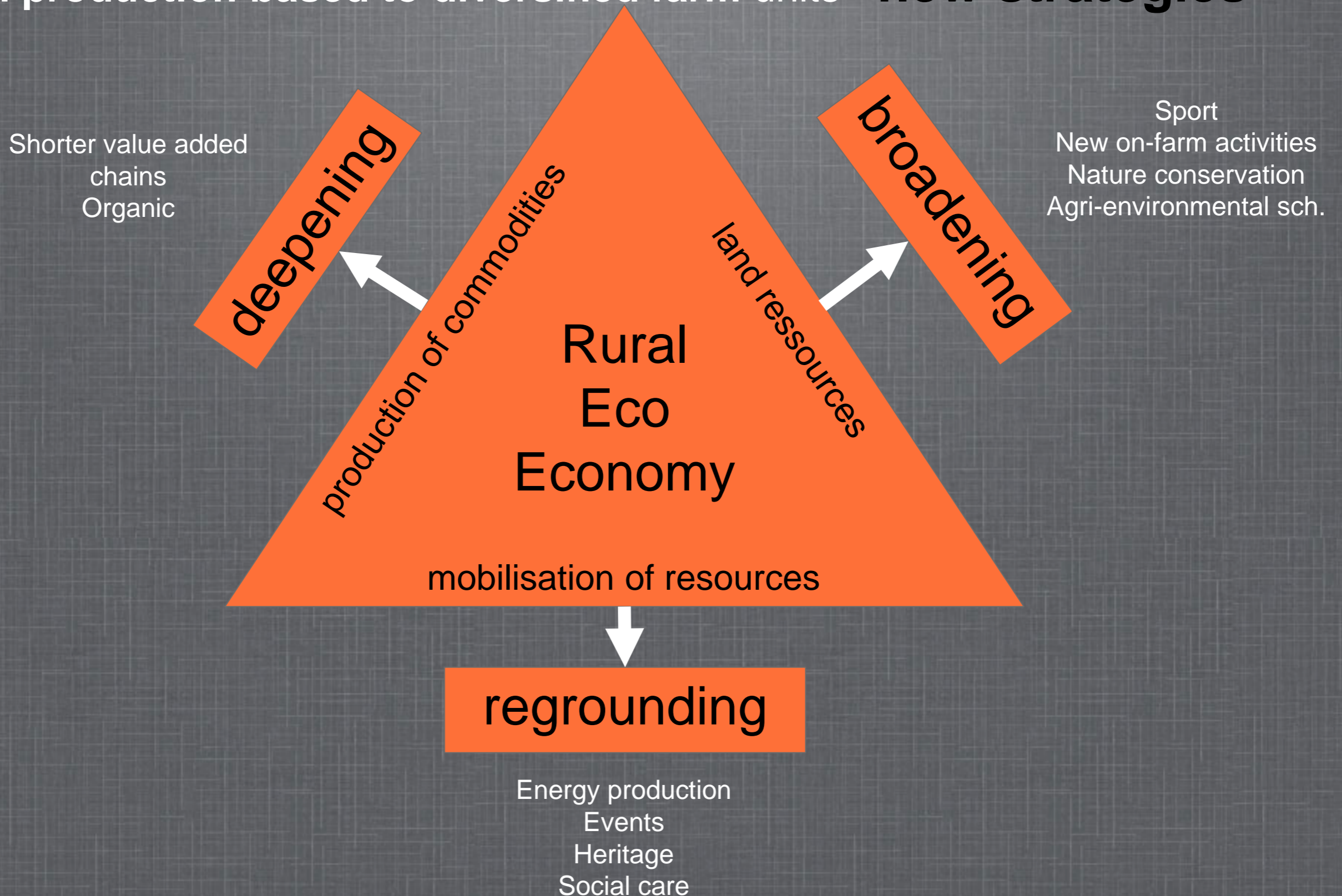
the transition to post-productivism  
may be the sustainable path  
for the survival of rural areas  
and landscape character

➔ but it is not straightforward  
requires new paradigms



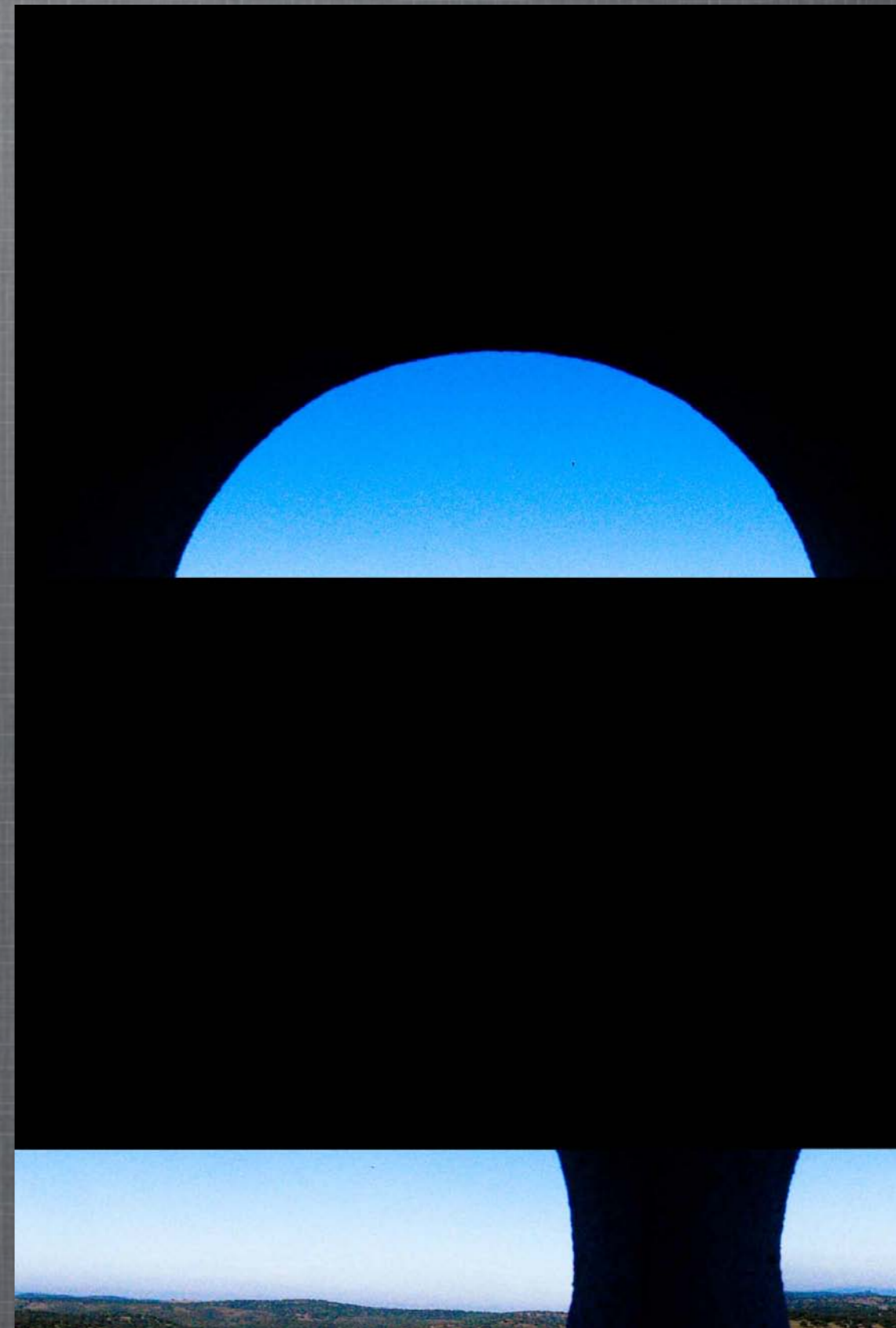
# ...land managers still focused on production

from production based to diversified farm units - new strategies



## **objectives of this analysis:**

- In an area of highly valued rural landscapes, with High Nature Value farming systems,
  - > how landowners are aware of these values
  - > how much they integrate the provision of public goods in their management strategy
  - > what is the role of local institutions and particularly the LIFE project run by the municipality



Landscape management with a nature concern: **the role of a Natura 2000 classification in awareness raising of land owners for the provision of public goods.**

# Monfurado Natura 2000 site, a diversified landscape

# two types of High Nature Value Farming Systems

## Type I

- Large scale holdings (> 100 ha/ farm unit)
- Silvo pastoral land use
  - Montado
- Extensive grazing
- Hunting



## Type II

- Small scale mosaic
- Olive groves, grazing and vegetable gardens
- Diversity of patches and structural elements
- Multiple uses



# **two types of High Nature Value Farming Systems**

**a differentiated spatial pattern**

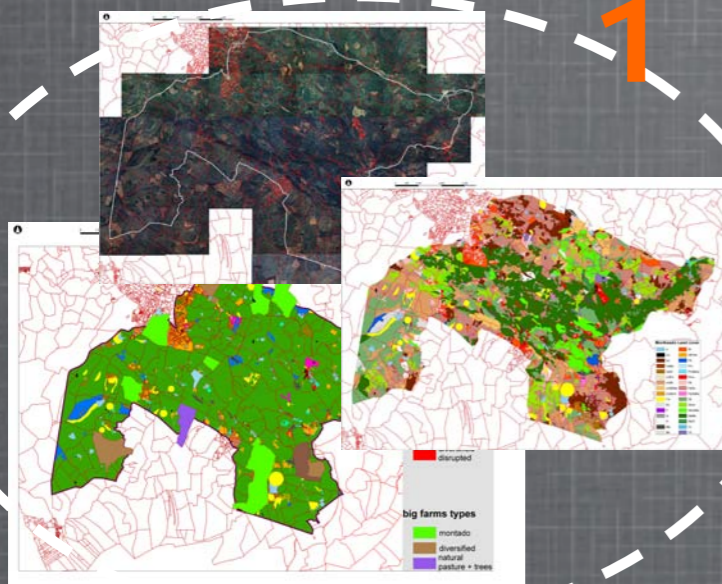
**different character + potentialities + threats +  
trends of change**





# Methodological steps

Case study  
characterization



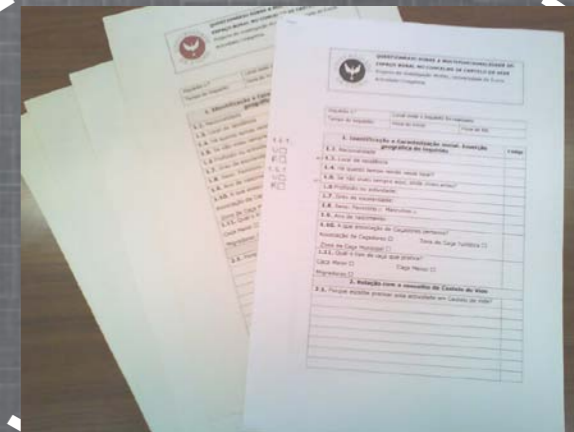
Defining dimensions  
and indicators

2

productivism post-  
productivism  
in this context ?

A central white box contains the text 'productivism post-productivism in this context ?' with the number '2' to its right. A red arrow points from this step to the next.

Survey and sample design



Data analysis and  
discussion



Questionnaires (2008 and 2010)



# methodological steps: indicators

| <b>Function</b>                | <b>Indicators</b>  |
|--------------------------------|--|
| Biodiversity conservation      | Organic farming<br>Active participation in LIFE project<br>Extensive land use<br>Other practices favoring landscape diversity  |
| Hunting                        | Property within a classified hunting area  |
| Mushroom and asparagus picking | Picking activities registered  |
| Leisure                        | Investments related with recreational use, like paths improvement,<br>Acknowledgment that others are using the property for walking, cycling, bird watching<br>Explicit interest from land owners on these possible uses |
| Quality of Life                | Explicit appreciation by land owners of living/working in the property because of landscape and countryside characteristics  |
| Identity                       | Explicit concern by land owners on heritage values, on traditional practices and on keeping the values inherited from his predecessors   |

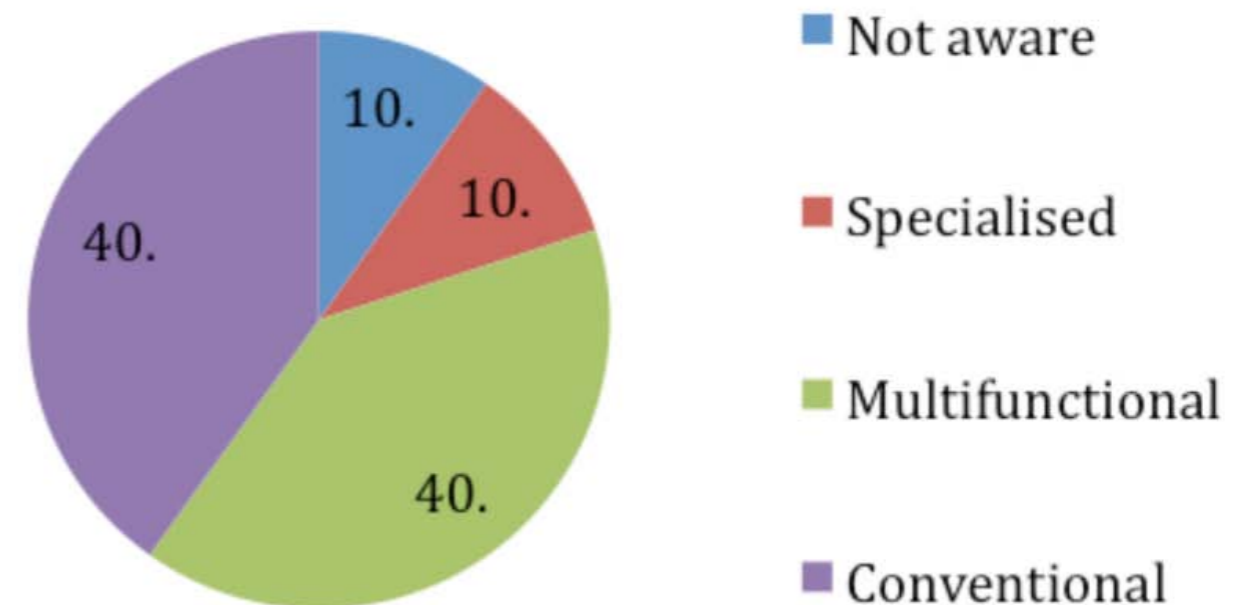
# land owners typology

- 1. Not aware:** No awareness of the provision of public goods and services
- 2. Specialized :** Awareness of public goods and services but not interested in exploiting them
- 3. Multifunctional:** Awareness and practices according in farm management or intentions in short term
- 4. Conventional:** No awareness but practices according



# distribution of types of land managers + areas in each type

**%Land area in each Landscape management type**



# distribution of types per size of farm

Landscape management with a nature concern: the role of a Natura 2000 classification in awareness raising of land owners for the provision of public goods.

**a “random” spatial distribution**


# low awareness...even if increasing

In general,  
late debate  
and weak  
institutional  
frameworks



The LIFE  
project:  
no change in  
practices but  
slight change in  
attitudes and in  
discourse

in landowners.. as well as in municipality staff

The background of the slide is a photograph of a large, light-colored stone wall. Two men are standing at the base of the wall on the right side. One man is wearing a dark jacket and blue jeans, and the other is wearing a dark jacket and dark pants. They appear to be in conversation. Two speech bubbles are overlaid on the image, pointing towards the men.

They talk  
about this  
NATURA  
2000...

They support me in  
what I know is the  
most adapted practice,  
why not participate ?



# are public goods being included in management ?

**most farm units are managed so that they are multifunctional**

- \* only a few stay anchored solely to production**
- \* many small not even do production anymore**
- \* innovative combinations by new comers**

**➤ spatial , temporal and structural  
co-existence of multiple transition trajectories**

# **an emerging landscape management ?**

## **DE-AGRARIANIZATION:**

- > production is loosing relevance**
- > public goods are an asset and are maintained**
- > but there is not a multifunctionality model, as public goods are only to a small scale exploited by land owners**

**Natura 2000 and LIFE > brought new ideas and created discussion fora**

- risk of focus on conservation and thus stagnation**
- > a landscape vision COULD be the next step**
  - >> the conditions are in place**



**Gracias / Merci**