

Left Ventricular Ballooning Patterns in Recurrent Takotsubo Cardiomyopathy: A Systematic Review and Meta-analysis of Reported Cases

Ravi Korabathina, MD^{1,4}; Jamie Porcadas, MD²; Kevin E. Kip, PhD³; Puja R. Korabathina, MD⁵; Andrew D. Rosenthal, MD¹; Peter Wassmer, MD¹

¹ Department of Cardiovascular Medicine, Bayfront Health, St. Petersburg, Florida

² Department of Family Medicine, Bayfront Health, St. Petersburg, Florida

³ Department of Epidemiology and Biostatistics, University of South Florida College of Public Health, Tampa, Florida

⁴ Department of Cardiovascular Sciences, University of South Florida Morsani College of Medicine, Tampa, Florida

⁵ Department of Internal Medicine, Bayfront Health, St. Petersburg, Florida

Citation:

Korabathina R, Porcadas J, Kip KE, Korabathina PR, Rosenthal AD, Wassmer P. Left ventricular ballooning patterns in recurrent takotsubo cardiomyopathy: a systematic review and meta-analysis of reported cases. *Tex Heart Inst J* 2021;48(5):e207223. doi: [10.14503/THIJ-20-7223](https://doi.org/10.14503/THIJ-20-7223)

Key words:

Diagnosis, differential; recurrence; risk factors; stress, psychological/ complications/epidemiology; takotsubo cardiomyopathy/epidemiology/etiology/physiopathology; ventricular dysfunction, left/etiology/physiopathology

Corresponding author:

Ravi Korabathina, MD, 601 7th St. S., Suite 205, St. Petersburg, FL 33701

E-mail:

r_korabathina@yahoo.com

© 2021 by the Texas Heart[®] Institute, Houston

Recurrent takotsubo cardiomyopathy (TTC) and the clinical profiles and outcomes of patients have not been fully evaluated, nor has the effect of left ventricular ballooning pattern. After searching the medical literature for reports of patients with recurrent TTC, we identified 84 articles with 101 case descriptions. We divided the cases into those with only apical left ventricular ballooning patterns at recurrence (typical, n=60), and those with at least one midventricular or basal ballooning pattern (atypical, n=41). We then compared their clinical profiles and outcomes.

The groups were similar in terms of baseline demographic characteristics, presence and types of triggers, use of heart failure medications at TTC recurrence, electrocardiographic changes at presentation, initial left ventricular ejection fractions, timespans between recurrent TTC episodes, and recovery times after each event. However, patients in the atypical group had significantly fewer severe adverse events (cardiogenic shock and cardiac arrest) than did those in the typical group, with an estimated 63% lower odds (adjusted odds ratio=0.37; 95% CI, 0.14–0.97; P=0.039). Survival to hospital discharge was statistically similar but lower in the typical group (n=53; 88.3%) than in the atypical group (n=24; 96%).

Our results suggest that left ventricular ballooning patterns influence clinical outcomes, and that outcomes are more favorable in patients with recurrent TTC who have atypical left ventricular ballooning patterns. (Tex Heart Inst J 2021;48(5):e207223)

Takotsubo cardiomyopathy (TTC) presents with various left ventricular (LV) ballooning patterns, typically in the absence of obstructive coronary artery disease, and is usually followed within days by the universal recovery of LV systolic dysfunction. The most prevalent LV ballooning pattern is the apical; less prevalent are midventricular and basal (nonapical) patterns. Isolated TTC events are diagnosed in 1.7% to 3.5% of patients who present with suspected acute coronary syndrome^{1,2}; TTC recurs in only 1.5% of all cases, according to the largest meta-analysis to date.³ Although individual case reports and small case series describe clinical profiles of patients with recurrent TTC, few data are available for cohort comparisons of various recurrent LV ballooning patterns. It is unknown whether apical and nonapical ballooning patterns in recurrent TTC identify epidemiologically distinct groups of patients. Accordingly, we analyzed data from documented cases of recurrent TTC to improve our understanding of the clinical profiles and outcomes of this at-risk patient population.

Methods

We followed the Preferred Reporting Items for Systematic Reviews and Meta-Analysis (PRISMA) guidelines to conduct our study (Fig. 1). We searched for all listings be-

fore and through December 2018 in PubMed, Google Scholar, and Ovid Medline Complete with use of the following search phrases: (*takotsubo cardiomyopathy* OR *apical ballooning syndrome* OR *stress cardiomyopathy*) AND (*recurrence* OR *recurrent* OR *relapse*). No limits were placed on article type or publication date. Requirements for initial selection were English-language articles including adults (age, ≥ 18 yr). Articles were included if the diagnosis of TTC met the Mayo Clinic criteria,⁴ and if details of LV ballooning patterns during initial and recurrent TTC episodes were provided. For meta-analysis, we used established definitions of the 3 predominant TTC patterns: apical, midventricular, and basal LV ballooning.⁵ Myocardial ballooning patterns involving the focal LV segments and the right ventricle were excluded. At least 2 authors fully reviewed each article and extracted the data.

We collected these data: 1) article type, country, and year of publication; 2) each patient's sex, age, and age at first TTC episode; 3) number and pattern of each recurrence, and time between episodes; 4) clinical characteristics (presence of chest pain or of emotional or physical stresses during each episode); 5) use of angiotensin-converting enzyme inhibitors (ACEIs) or β -blockers at the time of recurrence; 6) cardiac troponin elevation; 7) electrocardiographic (ECG) ST-segment

changes, T-wave changes, or QTc interval prolongation at hospital admission; 8) LV ejection fraction (LVEF) obtained from echocardiograms at presentation, and the time to LVEF recovery after each episode; 9) hemodynamic profiles (shock necessitating vasopressor therapy or cardiac arrest necessitating advanced cardiopulmonary life support); and 10) survival to discharge from the hospital.

When data were missing, we asked for help from corresponding authors who could be reached by e-mail. We reviewed original ECGs when they were available, to corroborate the findings. We used LVEF values stated in each article and evaluated them for accuracy by reviewing online videos (when available) that showed LV contractility. Ultimately, the percentages of reports that were missing data were as follows: medications, 37.1%; echocardiographic findings, 23.8%; cardiac troponin elevation, 21.8%; hemodynamic profiles, 15.3%; ECG changes at admission, 12.4%; clinical characteristics, 9.2%; and survival to hospital discharge, 1%.

For the primary analysis, we divided cases into typical and atypical. The typical group presented exclusively with the apical LV ballooning pattern during their initial and recurrent TTC episodes; the atypical group had at least one nonapical LV ballooning pattern (midventricular or basal) during any TTC episode.

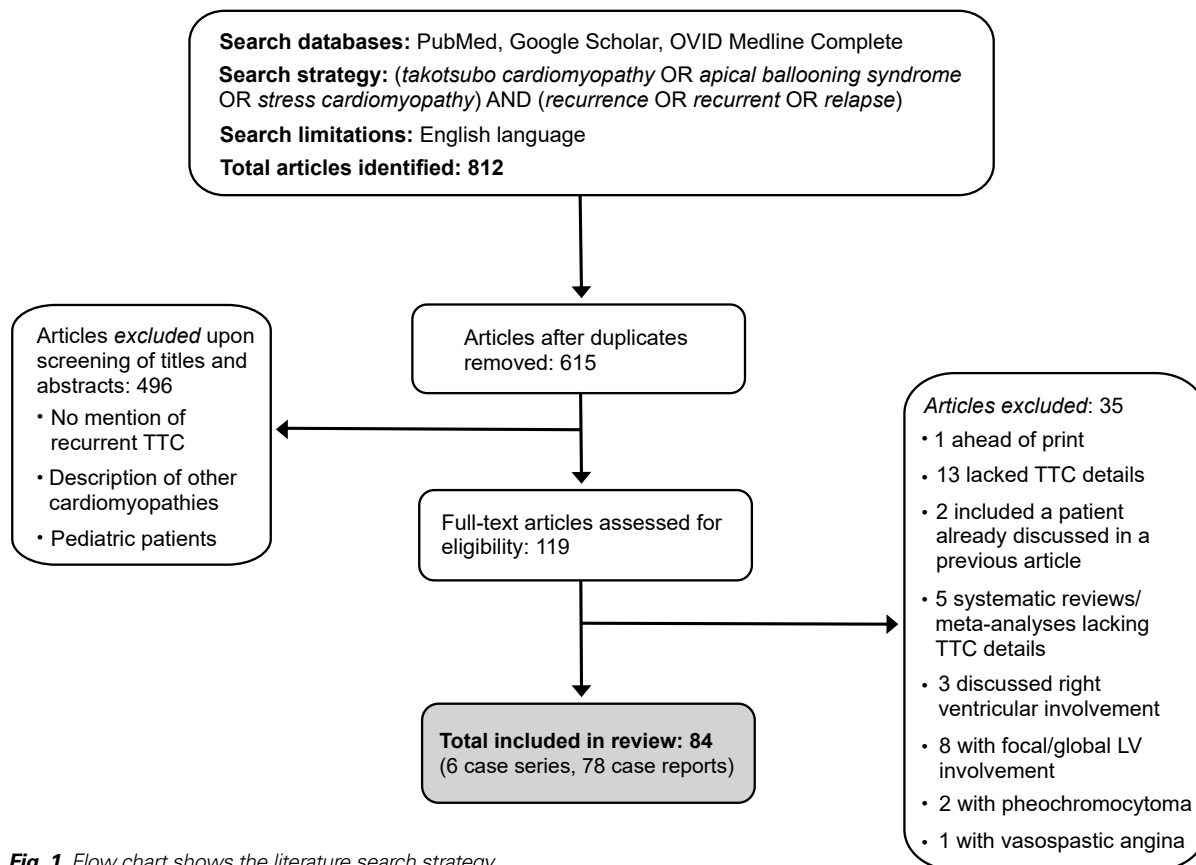


Fig. 1 Flow chart shows the literature search strategy.

LV = left ventricular; TTC = takotsubo cardiomyopathy

Statistical Analysis

Univariate analysis was used to compare demographic and clinical characteristics between the groups: the Student *t* test or Wilcoxon rank sum test for continuous variables, and χ^2 tests for categorical variables. To determine whether there was an independent relationship between either type of LV ballooning and severe cardiac events, we used logistic regression models to accommodate sample-size limitations and the relatively few instances of shock and cardiac arrest. Baseline biologic variables were then examined for univariate association with cardiac arrest at a significance level of $P < 0.20$. These variables were age, ACEI use, β -blocker use, emotional triggers, physical triggers, ECG changes (such as ST-segment changes), and LVEF. Of these, LVEF, β -blocker use, and ST-segment changes were selected, and atypical presentation was added to each model. We used χ^2 analysis to compare the percentages of typical and atypical patients who had cardiogenic shock, cardiac arrest, or both. For all patients who initially presented with an apical LV ballooning pattern, a second parallel univariate analysis was conducted (as described above) by comparing patients who presented with apical ballooning based on whether recurrent episodes were apical or nonapical (midventricular or basal LV ballooning). In all univariate analyses, $P < 0.05$ was considered statistically significant. Analyses were performed with use of Statistical Analysis Software 9.4M6 (SAS Institute Inc.).

Results

We identified 84 qualifying articles (6 case series and 78 case reports) involving 101 patients (Table I).⁶⁻⁸⁹ Of those patients, 60 (59.4%) had only the typical apical ballooning pattern initially and on recurrence, and 41 (40.6%) had an atypical nonapical pattern at least once (Fig. 2).

The study included 93 women (92.1% of the population; mean age, 64.2 ± 11.5 yr) and 8 men (7.9%; mean age, 70.1 ± 9 yr). The mean time between initial and recurrent TTC episodes was similar between the groups (2.6 ± 3.1 yr for all recurrences combined). The groups were similar in terms of demographic and clinical characteristics, except that the typical group had a larger number of emotional or physical triggers at initial presentation ($n=51$; 96.2%) than did the atypical cohort ($n=32$; 84.2%) ($P=0.046$). Of the recurrent cases, 51 (50.5%) occurred in Europe and 31 (30.7%) in North America (Table II).

The incidence of cardiogenic shock during hospitalization was similar between groups for initial and recurrent TTC episodes ($P=0.072$); however, during recurrence, it was higher in the typical group ($n=11$; 20.8%) than in the atypical group ($n=2$; 6.3%). In the typical group, the likelihood of shock presentation during recurrence was slightly higher at recurrence ($n=11$; 20.8%) than at initial presentation ($n=4$; 7.6%)

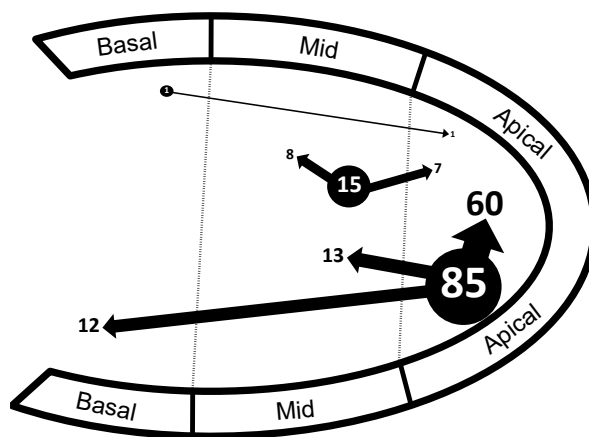


Fig. 2 Diagram shows distribution of the 101 instances of recurrent takotsubo cardiomyopathy by left ventricular ballooning location during initial and recurrent episodes. In 85 instances, the initial ballooning pattern was apical; at recurrence, the pattern was apical in 60, midventricular (mid) in 13, and basal in 12. In 15 instances, the initial pattern was midventricular; at recurrence, the pattern was midventricular in 8 and apical in 7. Only one patient had an initial basal pattern and apical recurrence.

($P=0.051$). Cardiac arrest necessitating advanced cardiopulmonary support was higher in the typical group ($n=10$; 18.9%) than in the atypical group ($n=2$; 6.1%) ($P=0.096$).

Survival to hospital discharge, although similar between groups, was lower in the typical group: 53 (88.3%) compared with 40 (97.5%) ($P=0.098$). Eight patients, all women, died during hospitalization. Of those patients, 7 were in the typical group; the cause of death was cardiac arrest with anoxic encephalopathy in 1 patient, cerebrovascular accident in 1, sepsis in 2, and unknown causes in 3. The patient in the atypical group died of cardiac arrest with consequent anoxic encephalopathy.

In multivariable analysis, after adjustment for baseline ejection fraction, medication use, and ECG changes, the odds of cardiac arrest were estimated to be 78% lower in the atypical group than in the typical group (adjusted odds ratio [OR]=0.22; 95% CI, 0.04–1.18; $P=0.08$). Similarly, the estimated odds of shock were 56% lower in the atypical group (adjusted OR=0.44; 95% CI, 0.13–1.49; $P=0.19$). When severe cardiac events were combined, shock and cardiac arrest events were significantly less frequent in the atypical group than in the typical group (Fig. 3), with an estimated 63% lower odds (adjusted OR=0.37; 95% CI, 0.14–0.97; $P=0.039$).

Comparison of Recurrent Patterns After Initial Apical Pattern

Of the 101 patients, 85 first presented with the typical apical ballooning pattern (Table III). At recurrence, 60 patients had another apical pattern and 25 had a nonapical pattern (13 midventricular and 12 basal). No

TABLE I. Characteristics of Patients With Recurrent Takotsubo Cardiomyopathy

Case No.	Pt. No.*	Article Type	Reference	Country	Female Sex	Age at 1st Event (yr)	Initial and Recurrence Type	Time Between Events	Initial and Recurrence Triggers
Midventricular-to-Midventricular Recurrence Pattern									
1	1	CS	Korabathina R, et al. ⁶	US	Yes	67	M–M–M	1 yr	COPD exacerbation; gastritis; colitis
2	2	CR	Sager HB, et al. ⁷	Germany	Yes	66	M–M–M	8 mo	COPD exacerbation; family dispute; angioplasty
3	3	CS	El-Battrawy I, et al. ⁸	Germany	Yes	50	M–M	6 yr	Physical stress ×2
4	4	CS	El-Battrawy I, et al. ⁸	Germany	Yes	63	M–M	2 yr	Physical stress ×2
5	5	CR	Fenster BE, et al. ⁹	US	Yes	37	M–M	3 yr	Emotional stress; received mammogram results
6	6	CR	Kato K, et al. ¹⁰	Japan	Yes	65	M–M	3 yr	Choking on water ×2
7	7	CR	Lal Y, et al. ¹¹	US	Yes	53	M–M	5 mo	Job stress ×2
8	8	CS	Sharkey SW, et al. ¹²	US	Yes	53	M–M	1.2 yr	Emotional stress ×2
Midventricular-to-Apical Recurrence Pattern									
9	1	CR	Battineni A, et al. ¹³	US	Yes	69	M–A		Myasthenia crisis ×2
10	2	CR	Kano S, et al. ¹⁴	Japan	Yes	60	M–A	1.5 yr	Emotional stress ×2
11	3	CR	Mansencal N, et al. ¹⁵	France	Yes	52	M–A	11 yr	NA; emotional stress
12	4	CR	Wever-Pinzon O, et al. ¹⁶	US	Yes	82	M–A	3.6 mo	Death in family; emotional stress
13	5	CR	Ghadri JR, et al. ¹⁷	Switzerland	Yes	65	M–A–focal	8 yr	None; quarrel; psychosis
14	6	CR	De Gennaro L, et al. ¹⁸	Italy	Yes	72	M–A	1 yr	Quarrel ×2
15	7	CS	Sharkey SW, et al. ¹²	US	Yes	66	M–A	3.8 yr	Emotional stress ×2
Apical-to-Midventricular Recurrence Pattern									
16	1	CR	Bridgman PG, et al. ¹⁹	New Zealand	Yes	76	A–M	5 mo	Earthquake ×2
17	2	CR	From AM, et al. ²⁰	US	Yes	65	A–M	3 yr	NA ×2
18	3	CR	Koeth O, et al. ²¹	Germany	Yes	66	A–M	1 yr	NA; none
19	4	CR	Xu B, et al. ²²	Australia	Yes	52	A–M	11 yr	Family argument ×2
20	5	CR	Gach O, et al. ²³	Belgium	Yes	70	A–M–A	6 yr	None; thunderstorm; hip replacement
21	6	CS	Singh K, et al. ²⁴	US	Yes	66	A–M	2 yr	None; husband's death
22	7	CS	Singh K, et al. ²⁴	US	Yes	63	A–M	7 yr	None ×2
23	8	CR	Migliore F, et al. ²⁵	Italy	Yes	67	A–M	6 yr	Relative's death ×2
24	9	CR	Miller GA, et al. ²⁶	US	Yes	49	A–M	6 mo	Seizures ×2

Continued

TABLE I. Characteristics of Patients With Recurrent Takotsubo Cardiomyopathy (continued)

Case No.	Pt. No.*	Article Type	Reference	Country	Female Sex	Age at 1st Event (yr)	Initial and Recurrence Type	Time Between Events	Initial and Recurrence Triggers
25	10	CR	Eitel I, et al. ²⁷	Germany	Yes	69	A–M	2 yr	Emotional stress; missed a train
26	11	CR	Jimenez-Lopez J, et al. ²⁹	Spain	Yes	75	A–M	2 yr	None; bronchospasm (house fire)
27	12	CR	Yamamoto Y, et al. ²⁸	Japan	Yes	48	A–M	1 yr	Argument with coworker x2
28	13	CR	Kotla SK and Nathaniel C ³⁰	US	Yes	64	A–M	4 yr	Mother's death; brother's death
Apical-to-Basal Recurrence Pattern									
29	1	CR	Sharrett J, et al. ³¹	US	Yes	59	A–B	3 mo	COPD exacerbation x2
30	2	CS	Korabathina R, et al. ⁶	US	Yes	75	A–B–B	5 mo	Gastritis; cholecystitis; gastritis
31	3	CR	Mugnai G, et al. ³²	Italy	Yes	64	A–B–B	7 mo	Seizures x3
32	4	CR	Rodriguez F, et al. ³³	US	Yes	56	A–A–B	2 mo	Job stress; emotional stress x2
33	5	CR	Fijalkowska M, et al. ³⁴	Poland	Yes	51	A–B–B	3 yr	Family quarrel; knee surgery; panic attack
34	6	CR	Pergolini A, et al. ³⁵	Italy	Yes	76	A–B	4 yr	None x2
35	7	CR	Izumo M, et al. ³⁶	Japan	No	78	A–B	2 yr	Pneumonia x2
36	8	CS	Ikeda E, et al. ³⁷	Japan	Yes	55	A–B	2 mo	Rhabdomyolysis x2
37	9	CS	Ikeda E, et al. ³⁷	Japan	No	75	A–B	3 mo	Asthma; pneumonia
38	10	CR	Kaushik M, et al. ³⁸	US	Yes	59	A–A–A– A–A–B	5 mo	Cannabis hyperemesis syndrome; hyperemesis x5
39	11	CR	Tait J, et al. ³⁹	Canada	Yes	55	A–B	24 d	Pelvic surgery; argument
40	12	CS	Singh K, et al. ²⁴	US	Yes	57	A–B	8 mo	GI distress x2
Basal-to-Apical Recurrence Pattern									
41	1	CR	Blessing E, et al. ⁴⁰	Germany	No	70	B–A	3 mo	Emotional stress x2
Apical-to-Apical Recurrence Pattern									
42	1	CR	Abu-Fanne R, et al. ⁴¹	Israel	Yes	73	A–A	3 yr	NA; asthma exacerbation
43	2	CR	Adigun R, et al. ⁴²	US	No	71	A–A	10 yr	Surgery x2
44	3	CR	Ahmed AE, et al. ⁴³	Saudi Arabia	Yes	46	A–A–A	2 yr	Emotional stress x3
45	4	CR	Akutsu Y, et al. ⁴⁴	Japan	Yes	72	A–A	1 yr	Emotional stress x2
46	5	CR	Brenes Salazar JA ⁴⁵	US	Yes	66	A–A	6 mo	Esophageal spasm; emotional distress

Continued

TABLE I. Characteristics of Patients With Recurrent Takotsubo Cardiomyopathy (continued)

Case No.	Pt. No.*	Article Type	Reference	Country	Female Sex	Age at 1st Event (yr)	Initial and Recurrence Type	Time Between Events	Initial and Recurrence Triggers
47	6	CR	Carigi S, et al. ⁴⁹	Italy	Yes	64	A–A	4 yr	COPD exacerbation ×2
48	7	CR	Cattaneo M, et al. ⁴⁶	Switzerland	No	66	A–A–A	1 yr	High altitude; none; cold-weather fishing
49	8	CR	Cemin R and Oberhollenzer R ⁴⁷	Netherlands	Yes	68	A–A	1 yr	Mugging; anniversary of 1st TTC event
50	9	CR	Cerrito M, et al. ⁴⁸	Italy	Yes	73	A–A	10 yr	Husband's death; family quarrel
51	10	CR	Chaparro-Munoz M, et al. ⁴⁹	England	Yes	56	A–A	6 yr	Emotional stress; family argument
52	11	CR	Cherian J, et al. ⁵⁰	US	Yes	42	A–A	13 yr	Father's death; domestic stress
53	12	CR	Dahdouh Z, et al. ⁵¹	France	Yes	53	A–A	0.05	Graves disease ×2
54	13	CR	Dande AS, et al. ⁵²	Switzerland	Yes	67	A–A	4 yr	GI illness; stroke
55	14	CS	Desmet WJ, et al. ⁵³	Belgium	Yes	60	A–A	6 yr	Unknown; none
56	15	CS	El-Batrawy I, et al. ⁸	Germany	Yes	77	A–A	3 yr	None; emotional stress
57	16	CS	El-Batrawy I, et al. ⁸	Germany	Yes	77	A–A	1 yr	None ×2
58	17	CS	El-Batrawy I, et al. ⁸	Germany	Yes	86	A–A	2	Physical stress ×2
59	18	CS	El-Batrawy I, et al. ⁸	Germany	Yes	71	A–A	1 yr	NA; emotional stress
60	19	CS	El-Batrawy I, et al. ⁸	Germany	Yes	73	A–A	1 yr	Emotional stress; physical stress
61	20	CR	Fabbicocchi F, et al. ⁵⁴	Italy	Yes	64	A–A	7 yr	Family argument; violent job argument
62	21	CR	Fineschi M and Gori T ⁵⁵	Italy	No	51	A–A	5 yr	NA; emotional stress
63	22	CR	Finsterer J, et al. ⁵⁶	Austria	Yes	47	A–A	10 mo	Surgery; NA
64	23	CR	Gogas BD, et al. ⁵⁷	Greece	Yes	75	A–A	8 yr	NA; emotional stress
65	24	CR	Gotyo N, et al. ⁵⁸	Japan	No	70	A–A	2 mo	Pneumonia; pneumonia + adrenal insufficiency
66	25	CR	Hefner J, et al. ⁵⁹	Germany	Yes	43	A–A–A–A	9 mo	Emotional stress ×4
67	26	CR	Hinkelbein J, et al. ⁶⁰	Germany	Yes	61	A–A–A–A–A	2 mo	Anesthesia induction ×5
68	27	CR	Jenab Y, et al. ⁶¹	Iran	Yes	58	A–A	4 mo	Emotional stress; physical stress while dancing
69	28	CR	Kleinfeldt T, et al. ⁶²	Germany	Yes	67	A–A	1 mo	Near-drowning; agoraphobia
70	29	CR	Lagan J, et al. ⁶³	UK	No	80	A–A–A	2 yr	Wife's death; emotional stress ×2

Continued

TABLE I. Characteristics of Patients With Recurrent Takotsubo Cardiomyopathy (continued)

Case No.	Pt. No.*	Article Type	Reference	Country	Female Sex	Age at 1st Event (yr)	Initial and Recurrence Type	Time Between Events	Initial and Recurrence Triggers
71	30	CS	Lee PH, et al. ⁶⁴	Korea	Yes	78	A–A	2 mo	Chemoembolization x2
72	31	CS	Lee PH, et al. ⁶⁴	Korea	Yes	42	A–A	5 mo	Gout attack; infectious colitis
73	32	CR	Legriell S, et al. ⁶⁵	France	Yes	54	A–A	6 mo	Seizure x2
74	33	CR	Leung Ki EL, et al. ⁶⁶	Switzerland	Yes	76	A–A	4 mo	COPD exacerbation x2
75	34	CR	Marabotti C, et al. ⁶⁸	Italy	Yes	65	A–A	24 d	Antidepressant withdrawal; none
76	35	CR	Mendoza I and Novaro GM ⁶⁷	US	Yes	76	A–A–A	7 mo	COPD exacerbation x3
77	36	CR	Mulleners T, et al. ⁶⁹	Belgium	Yes	62	A–A	8 yr	Emotional stress x2
78	37	CR	Novo G, et al. ⁷⁰	Italy	Yes	61	A–A	2 mo	Emotional stress; none
79	38	CR	Opolski G, et al. ⁷¹	Poland	Yes	62	A–A–A–A	10 yr	Emotional stress; physical stress; emotional stress x2
80	39	CR	Patel K, et al. ⁷²	US	Yes	55	A–A	4 mo	Graves disease x2
81	40	CR	Pathak H, et al. ⁷³	US	Yes	79	A–A	4 yr	Physical stress x2
82	41	CR	Rennyson SL, et al. ⁷⁴	US	Yes	66	A–A	6 mo	COPD exacerbation x2
83	42	CR	Rotondi F, et al. ⁷⁵	Italy	Yes	58	A–A	7 yr	None; emotional stress
84	43	CR	Rovetta R, et al. ⁷⁶	Italy	Yes	62	A–A	3 yr	Emotional stress x2
85	44	CR	Santoro F, et al. ⁷⁷	Italy	Yes	74	A–A	4 yr	GI illness; digoxin toxicity
86	45	CR	Santoro F, et al. ⁷⁸	Italy	Yes	74	A–A	24 d	Emotional stress; hypovolemia
87	46	CR	Sardar MR, et al. ⁷⁹	US	Yes	76	A–A	7 mo	Stroke; vertebrobasilar insufficiency
88	47	CS	Sharkey SW, et al. ¹²	US	Yes	51	A–A	3 wk	Emotional stress x2
89	48	CS	Sharkey SW, et al. ¹²	US	Yes	53	A–A–A–A	9.5 mo	Emotional stress x4
90	49	CS	Sharkey SW, et al. ¹²	US	Yes	65	A–A	2.9 yr	Emotional stress; none
91	50	CS	Sharkey SW, et al. ¹²	US	Yes	78	A–A	13 mo	Physical stress x2
92	51	CS	Sharkey SW, et al. ¹²	US	Yes	83	A–A	2.3 yr	Physical stress; emotional stress
93	52	CR	Tokunou T and Sadamatsu K ⁸⁰	Japan	Yes	54	A–A	12 yr	Coronary spasm; emotional stress
94	53	CR	Uechi Y and Higa K ⁸¹	Japan	Yes	53	A–A	5 d	Motor weakness; respiratory failure
95	54	CR	Venditti F, et al. ⁸²	Italy	Yes	81	A–A	6 mo	Emotional stress; COPD exacerbation
96	55	CR	Vriz O, et al. ⁸³	Italy	Yes	84	A–A	10 d	Asthma exacerbation x2

Continued

TABLE I. Characteristics of Patients With Recurrent Takotsubo Cardiomyopathy (continued)

Case No.	Pt. No.*	Article Type	Reference	Country	Female Sex	Age at 1st Event (yr)	Initial and Recurrence Type	Time Between Events	Initial and Recurrence Triggers
97	56	CR	Wong CP and Chia PL ⁸⁴	Singapore	Yes	62	A–A	1.5 yr	Myasthenia crisis x2
98	57	CR	Wu BT, et al. ⁸⁵	Japan	Yes	62	A–A	1 yr	Emotional stress x2
99	58	CR	Xu Z, et al. ⁸⁶	China	Yes	82	A–A	4 d	Emotional stress x2
100	59	CR	Yaoita H, et al. ⁸⁷	Japan	Yes	67	A–A	4 yr	None; vasodilator noncompliance
101	60	CR	Yoshida T, et al. ⁸⁸	Japan	Yes	83	A–A	12 d	Emotional stress; none

A = apical; B = basal; COPD = chronic obstructive pulmonary disease; CR = case report; CS = case series; GI = gastrointestinal; M = midventricular; NA = not available; Pt. = patient; TTC = takotsubo cardiomyopathy

*Restarts for each category

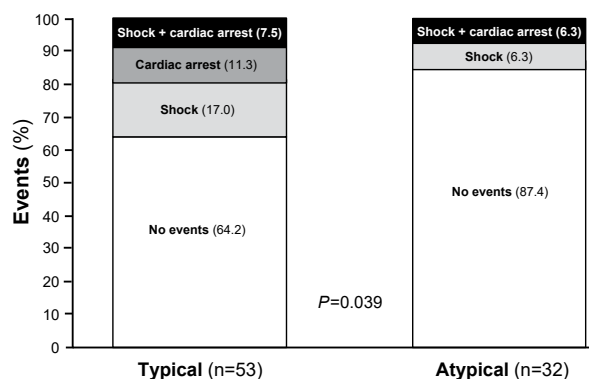


Fig. 3 Graph shows that fewer patients with atypical takotsubo cardiomyopathy had severe cardiac events. Column totals indicate number of papers that mentioned severe events.

$P < 0.05$ was considered statistically significant.

significant differences between the apical and atypical groups were identified in terms of patient demographics, time between recurrences, medication use at time of recurrence, or ECG findings. However, a significantly larger number of patients in the typical group had an emotional or physical trigger at initial presentation and when an apical pattern recurred: 51 (96.2%) compared with 18 (78.3%) ($P=0.013$). As for severe cardiac events, shock at presentation was similar between the groups but was higher during recurrence in the typical group: 11 (20.8%) compared with 1 (5.3%) ($P=0.12$). Similarly, a larger number of cardiac arrests occurred in the typical group ($n=10$; 18.9%) than in the atypical group ($n=1$; 5%) ($P=0.14$), and the survival rate was lower: 53 (88.3%) compared with 24 (96%) ($P=0.27$).

Discussion

Recurrent TTC occurs so infrequently that only case reports and small case series have been available for re-

view, with little or no analysis of recurrence patterns. Our most important finding is that patients with atypical TTC had a nearly two-thirds lower risk of shock and cardiac arrest than did patients in whom only typical TTC developed. This finding was statistically significant when both adverse events were combined. In-hospital mortality rates among patients with atypical TTC were also more favorable; only 1 of 8 total deaths occurred in this cohort.

No demographic or baseline clinical characteristics explained the difference in severe cardiac events and death between groups, even after multivariable adjustment. We speculate that if severe cardiac events are related to the acute coronary syndrome presentation and correlate in linear fashion with the degree of myocardial dysfunction, then the patients with atypical TTC perhaps had less myocardium in jeopardy than did those with typical TTC. Qualitatively determined LVEF was similar between the groups; however, LVEF evaluation performed by varying standards precluded identifying the myocardium at risk. Quantitative echocardiographic methods or magnetic resonance imaging may measure LVEF more precisely when focal myocardial stunning makes qualitative evaluation of contractility challenging.

The trends in adverse events may relate to underlying comorbidities and the severity of stress triggers, information that was not consistently obtainable. Nevertheless, our observation of more encouraging outcomes among patients with atypical TTC is novel and in fact differs from that in patients with a single TTC event; the International Takotsubo Registry report of 1,750 isolated TTC cases revealed no significant differences in a composite endpoint of cardiogenic shock, cardiopulmonary resuscitation, or in-hospital death.⁵

The apical LV ballooning pattern is typical in TTC. During the last 2 decades, atypical LV ballooning has

TABLE II. Comparison of the Patients Based on Typical (Apical) or Atypical (Nonapical) Ballooning Patterns

Variable	All (N=101)	Typical (n=60)	Atypical (n=41)	P Value
Geographic location				
North America	31 (30.7)	13 (21.7)	18 (43.9)	0.017
Europe	51 (50.5)	36 (60)	15 (36.6)	0.02
Asia or Australia	19 (18.8)	11 (18.3)	8 (19.5)	0.883
Publication time frame				
2001–2010	35 (34.7)	24 (40)	11 (26.8)	—
2011–2018	66 (65.3)	36 (60)	30 (73.2)	—
Time between recurrences (yr)	2.6 ± 3.1	2.7 ± 3.3	2.5 ± 2.9	0.834
>1 Recurrence	17 (16.8)	8 (13.3)	9 (22)	0.26
Female sex	93 (92.1)	55 (91.7)	38 (92.7)	0.854
Age (yr)	64.7 ± 10.8	65.9 ± 11.4	62.9 ± 9.7	0.173
Chest pain	73 (84.9)	41 (82)	32 (88.9)	0.379
ACEI use at recurrence	37 (59.7)	20 (57.1)	17 (63)	0.65
β-blocker use at recurrence	36 (55.4)	20 (52.6)	16 (59.3)	0.603
Serum troponin elevation	76 (96.2)	42 (95.5)	34 (97.1)	0.701
Initial triggers				
Emotional	41 (45.1)	24 (45.3)	17 (44.7)	0.96
Physical	43 (47.3)	27 (50.9)	16 (42.1)	0.405
Any*	83 (91.2)	51 (96.2)	32 (84.2)	0.046
Recurrence triggers				
Emotional	47 (48)	25 (43.1)	22 (55)	0.247
Physical	44 (44.9)	28 (48.3)	16 (40)	0.418
Any*	90 (91.8)	53 (91.4)	37 (92.5)	0.842
Initial ECG findings				
ST-segment changes	47 (54)	26 (52)	21 (56.8)	0.664
T-wave changes	52 (60)	29 (58)	23 (62.2)	0.7
QTc prolongation	16 (18.4)	9 (18)	7 (18.9)	0.914
Recurrence ECG findings				
ST-segment changes	38 (42.2)	24 (44.4)	14 (38.9)	0.606
T-wave changes	57 (63.3)	34 (63)	23 (63.9)	0.93
QTc prolongation	22 (24.4)	15 (27.8)	7 (19.4)	0.373
Initial LVEF (%)	34.8 ± 8.6	34.6 ± 8.9	35.1 ± 8.3	0.795
Recurrence LVEF (%)	36.4 ± 9.5	35.4 ± 10.5	37.8 ± 8	0.237
LV recovery time (mo)				
Initial	1.1 ± 1.3	1 ± 1.5	1.3 ± 1	0.46
Recurrence	1.5 ± 3.3	1.5 ± 4	1.5 ± 1.8	0.92
Cardiogenic shock				
Initial	7 (8.2)	4 (7.6)	3 (9.4)	0.766
Recurrence	13 (15.3)	11 (20.8)	2 (6.3)	0.072
Any episode	20 (11.8)	15 (14.2)	5 (7.8)	0.214
Cardiac arrest	12 (14)	10 (18.9)	2 (6.1)	0.096
Hospital survival	92 (92)	53 (88.3)	40 (97.5)	0.098

ACEI = angiotensin-converting enzyme inhibitor; ECG = electrocardiographic; LV = left ventricular; LVEF = left ventricular ejection fraction

*Two triggers (emotional and physical) in one patient¹⁰ are counted only once

Data are presented as number and percentage or as mean ± SD. *P* < 0.05 was considered statistically significant.

TABLE III. Comparison of 85 Patients With Initial Apical Ballooning Pattern by Group

Variable	Apical (n=60)	Nonapical (n=25)	P Value
Time between recurrences (yr)	2.7 ± 3.3	2.3 ± 2.7	0.646
>1 Recurrence	8 (13.3)	6 (24)	0.232
Female sex	55 (91.7)	23 (92)	0.854
Age (yr)	65.9 ± 11.4	63.6 ± 9.2	0.371
Chest pain	41 (82)	20 (90.9)	0.333
ACEI use at recurrence	20 (57.1)	11 (61.1)	0.781
β-blocker use at recurrence	20 (52.6)	10 (55.6)	0.838
Serum troponin elevation	42 (95.5)	21 (95.5)	0.999
Initial trigger			
Emotional	24 (45.3)	8 (34.8)	0.394
Physical	27 (50.9)	10 (43.5)	0.55
Any	51 (96.2)	18 (78.3)	0.013
Recurrence trigger			
Emotional	25 (43.1)	10 (41.7)	0.905
Physical	28 (48.3)	11 (45.8)	0.84
Any	53 (91.4)	21 (87.5)	0.59
Initial ECG findings			
ST-segment changes	26 (52)	12 (54.5)	0.842
T-wave changes	29 (58)	14 (63.6)	0.653
QTc prolongation	9 (18)	4 (18.2)	0.985
Recurrence ECG findings			
ST-segment changes	24 (44.4)	7 (33.3)	0.38
T-wave changes	34 (63)	13 (61.9)	0.932
QTc prolongation	15 (27.8)	4 (19)	0.435
LVEF (%)			
Initial	34.6 ± 8.9	33.3 ± 7.3	0.539
Recurrence	35.4 ± 10.5	36.7 ± 7.8	0.573
LV recovery time (mo)			
Initial episode	1 ± 1.5	1.3 ± 1	0.46
Recurrence	1.5 ± 4	1.5 ± 1.8	0.92
Cardiogenic shock			
Initial episode	4 (7.6)	3 (15.8)	0.298
Recurrence	11 (20.8)	1 (5.3)	0.12
Any episode	15 (14.2)	4 (10.5)	0.571
Cardiac arrest	10 (18.9)	1 (5)	0.14
Hospital survival	53 (88.3)	24 (96)	0.27

ACEI = angiotensin-converting enzyme inhibitor; ECG = electrocardiographic; LV = left ventricular; LVEF = left ventricular ejection fraction

Data are presented as mean ± SD or as number and percentage. *P* < 0.05 was considered statistically significant.

been observed in 16.8% to 40% of all isolated TTC cases,^{5,12,90} challenging earlier definitions of stress-induced cardiomyopathy and theories regarding its pathophysiology. We found that 84.2% of all initial TTC cases were apical, but that almost 1 in 3 recurrences was basal or midventricular. Of the few initially atypical cases (almost all, midventricular), the recurrent pattern was apical in almost half. Apical recurrence was the predominant clinical course overall, whereas the recurrence of atypical TTC usually involved mixed variants; we found only 8 cases of purely midventricular recurrence. It is unclear whether the various ballooning patterns of recurrent TTC indicate unique disease entities; however, it is more likely that

they are a continuum of the same disease process, because LV ballooning patterns can change within a few hours.⁹¹

In our analysis, more cases of atypical recurrent TTC were reported from North America than from Europe or from Asia and Australia. The geographic differences suggest an association between ethnicity and disease presentation; the effects of environmental and socioeconomic factors are unknown.

The Elusive Pathophysiology of Takotsubo Cardiomyopathy

Both the cause and the pathophysiology of stress-induced cardiomyopathy are elusive. The often-mentioned theory

that catecholamine surges may cause TTC has rarely been corroborated by serum catecholamine measurement, so the most plausible theoretical cause is coronary spasm and focal myocardial stunning from endothelial dysfunction.⁹² In addition, because most cases of recurrent TTC seem to occur in postmenopausal women and because all of the midventricular events that we found were in women, hormonal influence is possible.^{2,93}

Other than avoiding the inciting trigger (if even identifiable), there are no convincing recommendations for preventing recurrent TTC. In our analysis, when an emotional or physical stress trigger was identified, 76% of recurrent events were due to the same type of trigger and <10% to a crossover trigger. Renin-angiotensin system inhibitors were thought to be protective³; however, about 60% of subjects in our analysis were taking an ACEI when TTC recurred. Apart from this observation, the impact of medication use on preventing TTC recurrence cannot be elucidated from this meta-analysis of recurrence-only patients without a control group. Nonetheless, the overall rate of recurrent TTC appears to be low.^{3,5}

The population of patients in which TTC recurs provides valuable insight into the pathophysiology of the disease and in clarifying cause and effect. Acetylcholine tests, which clinically reproduce the coronary spasm in TTC, have distinct promise in revealing endothelial dysfunction.⁹⁴ This diagnostic approach may enable a better understanding of how catecholamine surge affects coronary vasomotor function.

Limitations

The chief limitation in our meta-analysis was the inability to determine the merit of information within individual studies; incomplete data may have influenced trends, outcomes, and other variables. Article search-and-selection bias was possible, despite efforts to minimize it. Attempts to understand true TTC recurrence rates were hindered by a lack of uniform protocols to monitor TTC subjects prospectively with use of standardized imaging methods. Finally, between-group comparisons of LV recovery time and other variables may have been affected by varying timing protocols for reassessing LV contractile function.

Conclusions

Our meta-analysis adds meaningfully to the natural history of TTC by revealing implications of specific recurrence patterns. Strikingly, we found no major differences between baseline variables in comparing apical with nonapical groups of patients and recurrence patterns. Single and even multiple recurrences occurred in 1 of 6 cases. Defined clinical outcomes seem to be influenced by LV ballooning pattern, and patients in whom atypical variants occur may have more favorable outcomes in terms of combined severe cardiac events

and death. Regardless, just as in isolated TTC episodes, recurrent TTC is associated with a substantial clinical risk. Further study into the pathophysiology of this enigmatic cardiomyopathy is warranted.

Published: 13 December 2021

References

1. Eshtehardi P, Koestner SC, Adorjan P, Windecker S, Meier B, Hess OM, et al. Transient apical ballooning syndrome--clinical characteristics, ballooning pattern, and long-term follow-up in a Swiss population. *Int J Cardiol* 2009;135(3):370-5.
2. Paixao ARM, Balaji N, Ryzhikov A, Ghafourian K, Collins S, Suddath WO, et al. Left ventricular contraction patterns in patients with suspected acute coronary syndrome and normal coronary angiograms: a new look at the takotsubo syndrome. *Clin Cardiol* 2011;34(1):45-50.
3. Singh K, Carson K, Usmani Z, Sawhney G, Shah R, Horowitz J. Systematic review and meta-analysis of incidence and correlates of recurrence of takotsubo cardiomyopathy. *Int J Cardiol* 2014;174(3):696-701.
4. Prasad A, Lerman A, Rihal CS. Apical ballooning syndrome (tako-tsubo or stress cardiomyopathy): a mimic of acute myocardial infarction. *Am Heart J* 2008;155(3):408-17.
5. Templin C, Ghadri JR, Diekmann J, Napp LC, Bataiosu DR, Jaguszewski M, et al. Clinical features and outcomes of takotsubo (stress) cardiomyopathy. *N Engl J Med* 2015;373(10):929-38.
6. Korabathina R, Porcadas J, Mishkin M, Turner A, Labovitz AJ. Three episodes of takotsubo cardiomyopathy with variant ballooning patterns in 2 elderly women. *Tex Heart Inst J* 2018;45(4):247-51.
7. Sager HB, Schunkert H, Kurowski V. Recurrent mid-ventricular tako-tsubo cardiomyopathy: three episodes of a uniform cardiac response to varying stressors. *Int J Cardiol* 2011;152(1):e22-4.
8. El-Battrawy I, Ansari U, Behnes M, Hillenbrand D, Schramm K, Haghi D, et al. Clinical and echocardiographic analysis of patients suffering from recurrent takotsubo cardiomyopathy. *J Geriatr Cardiol* 2016;13(11):888-93.
9. Fenster BE, Freeman AM, Weinberger HD, Buckner JK. Recurrent transient mid-ventricular ballooning. *Int J Cardiol* 2011;152(2):e35-6.
10. Kato K, Sakai Y, Ishibashi I, Kobayashi Y. Recurrent mid-ventricular takotsubo cardiomyopathy. *Int J Cardiovasc Imaging* 2014;30(8):1417-8.
11. Lal Y, Stys A, Stys T. Recurrent midventricular ballooning, a rare phenomenon. *J Cardiol Cases* 2012;6(4):e112-5.
12. Sharkey SW, Windenburg DC, Lesser JR, Maron MS, Hauser RG, Lesser JN, et al. Natural history and expansive clinical profile of stress (tako-tsubo) cardiomyopathy. *J Am Coll Cardiol* 2010;55(4):333-41.
13. Battineni A, Mullaguri N, Thanki S, Chockalingam A, Govindarajan R. A case report of recurrent takotsubo cardiomyopathy in a patient during myasthenia crisis. *Case Rep Crit Care* 2017;2017:5702075.
14. Kano S, Munakata R, Inami T, Takano M, Seino Y, Shimizu W. Recurrent takotsubo cardiomyopathy with variable left ventricular obstruction and morphologies. *J Am Coll Cardiol* 2014;63(2):e3.
15. Mansencal N, El Mahmoud R, Pilliere R, Dubourg O. Relationship between pattern of tako-tsubo cardiomyopathy and age: from midventricular to apical ballooning syndrome. *Int J Cardiol* 2010;138(1):e18-20.

16. Wever-Pinzon O, Wever-Pinzon J, Tami L. Recurrent takotsubo cardiomyopathy presenting with different morphologic patterns. *Int J Cardiol* 2011;148(3):379-81.
17. Ghadri JR, Jaguszewski M, Corti R, Luscher TF, Templin C. Different wall motion patterns of three consecutive episodes of takotsubo cardiomyopathy in the same patient. *Int J Cardiol* 2012;160(2):e25-7.
18. De Gennaro L, Correale M, Santoro F, Buquicchio F, Caldarola P, Di Biase M, Brunetti ND. Tako-tsubo cardiomyopathy recurrence in an elderly woman firstly diagnosed with acute myocardial infarction: how many cold cases to be reclassified? *Int J Cardiol* 2013;168(3):e99-101.
19. Bridgman PG, Chan CW, Elliott JM. A case of recurrent earthquake stress cardiomyopathy with a differing wall motion abnormality. *Echocardiography* 2012;29(2):e26-7.
20. From AM, Sandhu GS, Nkomo VT, Prasad A. Apical ballooning syndrome (takotsubo cardiomyopathy) presenting with typical left ventricular morphology at initial presentation and mid-ventricular variant during a recurrence. *J Am Coll Cardiol* 2011;58(1):e1.
21. Koeth O, Mark B, Zahn R, Zeymer U. Midventricular form of takotsubo cardiomyopathy as a recurrence 1 year after typical apical ballooning: a case report. *Cases J* 2008;1(1):331.
22. Xu B, Williams PD, Brown M, Macisaac A. Takotsubo cardiomyopathy: does recurrence tend to occur in a previously unaffected ventricular wall region? *Circulation* 2014;129(7):e339-40.
23. Gach O, Lempereur M, Pierard LA, Lancellotti P. Recurrent stress cardiomyopathy with variable pattern of left ventricle contraction abnormality. *J Am Coll Cardiol* 2012;60(3):e5.
24. Singh K, Parsaik A, Singh B. Recurrent takotsubo cardiomyopathy: variable pattern of ventricular involvement. *Herz* 2014;39(8):963-7.
25. Migliore F, Zorzi A, Perazzolo Marra M, Corbetti F, Corrado D, Illiceto S, Tarantini G. Typical and atypical takotsubo syndrome in the same patient. *Int J Cardiol* 2013;162(2):e28-30.
26. Miller GA, Ahmed YM, Tarant NS. Recurrence of postoperative stress-induced cardiomyopathy resulting from status epilepticus. *Case Rep Crit Care* 2017;2017:8063837.
27. Eitel I, Moeller C, Graf T, Thiele H. Recurrence of takotsubo cardiomyopathy with different ballooning patterns. *Int J Cardiol* 2014;177(1):25-6.
28. Yamamoto Y, Watari Y, Kobayashi K, Tanaka K. Recurrent takotsubo cardiomyopathy can appear as transient midventricular ballooning syndrome. *J Cardiol Cases* 2010;1(3):e141-3.
29. Jimenez-Lopez J, Arias MA, Casares-Medrano J, Pachon M, Orradre JL, Puchol A. Tako-tsubo cardiomyopathy with apical variant complicated by cardiac tamponade and mid-ventricular variant presentation during a delayed recurrence. *Rev Esp Cardiol (Engl Ed)* 2012;65(10):962-3.
30. Kotla SK, Nathaniel C. Recurrent stress-induced cardiomyopathy: a case report and review article. *Case Rep Med* 2011;2011:160802.
31. Sharrett J, Surabhi S, Philips S, Morse H. Fatal case of recurrent takotsubo cardiomyopathy presenting with cardiac arrest and variable ventricular involvement what role beta agonist and beta blockers? *J S C Med Assoc* 2015;111(4):127-30.
32. Mugnai G, Pasqualin G, Prati D, Menegatti G, Vassanelli C. Recurrent multifocal takotsubo cardiomyopathy in a patient with epilepsy: broken heart or brain? *Int J Cardiol* 2015;201:332-5.
33. Rodriguez F, Nathan AS, Navathe AS, Ghosh N, Shah PB. Serial classic and inverted pattern takotsubo cardiomyopathy in a middle-aged woman. *Can J Cardiol* 2014;30(11):1462.e7-9.
34. Fijalkowska M, Fijalkowski M, Nowak R, Jaguszewski M, Rynkiewicz A. Triple occurrence of takotsubo cardiomyopathy. *Kardiologia Pol* 2013;71(5):547.
35. Pergolini A, Zampi G, Pontillo D, Venturini E, Pino PG, Musumeci F. Atypical recurrence of takotsubo syndrome: giant T-wave inversion and huge QTc prolongation. *J Cardiovasc Med (Hagerstown)* 2017;18(8):631-2.
36. Izumo M, Akashi YJ, Suzuki K, Omiya K, Miyake F, Ohtaki E. Recurrent takotsubo cardiomyopathy with variant forms of left ventricular dysfunction. *J Cardiol Cases* 2010;2(1):e37-40.
37. Ikeda E, Hisamatsu K, Kijima Y, Mizoguchi H, Urakawa S, Kimura H, et al. Morphologically unique feature of recurrent ampulla (takotsubo) cardiomyopathy. *Circ J* 2009;73(2):371-5.
38. Kaushik M, Alla VM, Madan R, Arouni AJ, Mohiuddin SM. Recurrent stress cardiomyopathy with variable regional involvement: insights into etiopathogenetic mechanisms. *Circulation* 2011;124(22):e556-7.
39. Tait J, Cleveland D, Ashton T. Unusual reversed wall motion pattern in a patient with recurrent takotsubo cardiomyopathy. *Can J Cardiol* 2013;29(8):1015.e13-4.
40. Blessing E, Steen H, Rosenberg M, Katus H, Frey N. Recurrence of takotsubo cardiomyopathy with variant forms of left ventricular dysfunction. *J Am Soc Echocardiogr* 2007;20(4):439.e11-2.
41. Abu-Fanne R, Rott D, Klein M, Leitersdorf E, Pollak A. Recurrent apical ballooning despite treatment with verapamil. *Cardiology* 2007;108(3):210-3.
42. Adigun R, Morley S, Prasad A. Rare recurrence of apical ballooning (takotsubo) syndrome in an elderly man. *BMJ Case Rep* 2018;2018:bcr2017222451.
43. Ahmed AEK, Serafi A, Sunni NS, Younes H, Hassan W. Recurrent takotsubo with prolonged QT and torsade de pointes and left ventricular thrombus. *J Saudi Heart Assoc* 2017;29(1):44-52.
44. Akutsu Y, Kaneko K, Kodama Y, Li HL, Suyama J, Toshida T, et al. Reversible T-wave inversions and neurogenic myocardial stunning in a patient with recurrent stress-induced cardiomyopathy. *Ann Noninvasive Electrocardiol* 2014;19(3):285-8.
45. Brenes Salazar JA. Recurrent transient apical cardiomyopathy (tako-tsubo-like left ventricular dysfunction) in a postmenopausal female with diffuse esophageal spasms. *Heart Views* 2013;14(4):185-9.
46. Cattaneo M, Moccetti M, Pasotti E, Faletta F, Porretta AP, Kobza R, Gallino A. Three recurrent episodes of apical-ballooning takotsubo cardiomyopathy in a man. *Circulation* 2015;132(24):e377-9.
47. Cemin R, Oberhollenzer R. Annual recurrence of acute left ventricular apical ballooning. *Int J Cardiol* 2007;119(2):237-8.
48. Cerrito M, Caragliano A, Zema D, Zito C, Oreto G. Very late recurrence of takotsubo syndrome. *Ann Noninvasive Electrocardiol* 2012;17(1):58-60.
49. Chaparro-Munoz M, Recio-Mayoral A, Kaski JC, Brecker S, Sutherland GR. Myocardial stunning identified by using strain/strain rate imaging during dobutamine stress echocardiography in a rare late recurrence of tako-tsubo syndrome. *Int J Cardiol* 2010;145(1):e9-12.
50. Cherian J, Angelis D, Filiberti A, Saperia G. Recurrence of stress-induced (takotsubo) cardiomyopathy. *Cardiology* 2007;108(2):144-6.
51. Dahdouh Z, Roule V, Bignon M, Grollier G. Recurrent tako tsubo related to subclinical hyperthyroidism [in Spanish]. *Rev Esp Cardiol* 2011;64(11):1069-71.
52. Dande AS, Pandit AS, Galin ID. Takotsubo cardiomyopathy followed by neurogenic stunned myocardium in the

- same patient: gradations of the same disease? *Cardiology* 2011;118(3):175-8.
53. Desmet WJR, Adriaenssens BFM, Dens JAY. Apical ballooning of the left ventricle: first series in white patients. *Heart* 2003;89(9):1027-31.
 54. Fabbicocchi F, Montorsi P, Bartorelli AL. Seven-year recurrence of left ventricular apical ballooning. *Int J Cardiol* 2010;145(3):e86-7.
 55. Fineschi M, Gori T. Evidence of impaired coronary flow reserve and elevated microvascular resistances in a case of recurrent left apical ballooning. *Int J Cardiol* 2011;149(2):e66-8.
 56. Finsterer J, Stollberger C, Hornykewycz A, Gencik M. Noncompaction predisposing for recurrent takotsubo syndrome in myotonic dystrophy 1. *Int J Cardiol* 2013;168(2):e38-9.
 57. Gogas BD, Antoniadis AG, Zacharoulis AA, Kolokathis F, Lekakis J, Kremastinos DT. Recurrent apical ballooning syndrome "the masquerading acute cardiac syndrome". *Int J Cardiol* 2011;150(1):e17-9.
 58. Gotyo N, Kida M, Horiuchi T, Hirata Y. Torsade de pointes associated with recurrent ampulla cardiomyopathy in a patient with idiopathic ACTH deficiency. *Endocr J* 2009;56(6):807-15.
 59. Hefner J, Csef H, Frantz S, Glatter N, Warrings B. Recurrent tako-tsubo cardiomyopathy (TTC) in a pre-menopausal woman: late sequelae of a traumatic event? *BMC Cardiovasc Disord* 2015;15:3.
 60. Hinkelbein J, Mey C, Brinker G, Pfister R, Bottiger BW. Case report of tako-tsubo cardiomyopathy associated with repetitive anaesthesia in a female patient with tako-tsubo cardiomyopathy. *BMC Anesthesiol* 2015;15:39.
 61. Jenab Y, Pakbaz M, Ghaffari-Marandi N. Recurrence of takotsubo cardiomyopathy: role of multi-detector computed tomography coronary angiography. *J Tehran Heart Cent* 2013;8(3):164-6.
 62. Kleinfeldt T, Severin R, Lischke S, Ince H, Nienaber CA. Recurrent left ventricular apical ballooning induced by recurrent stress. *Int J Cardiol* 2009;134(2):e47-8.
 63. Lagan J, Connor V, Saravanan P. Takotsubo cardiomyopathy case series: typical, atypical and recurrence. *BMJ Case Rep* 2015;2015:bcr2014208741.
 64. Lee PH, Song JK, Sun BJ, Choi HO, Seo JS, Na JO, et al. Outcomes of patients with stress-induced cardiomyopathy diagnosed by echocardiography in a tertiary referral hospital. *J Am Soc Echocardiogr* 2010;23(7):766-71.
 65. Legriel S, Bruneel F, Dalle L, Appere-de-Vecchi C, Georges JL, Abbosh N, et al. Recurrent takotsubo cardiomyopathy triggered by convulsive status epilepticus. *Neurocrit Care* 2008;9(1):118-21.
 66. Leung Ki EL, Delabays A, Lyon X, Pruvot E. A case of recurrent transient left ventricular apical ballooning associated with atrial fibrillation. *Int J Cardiol* 2007;118(2):e35-8.
 67. Mendoza I, Novaro GM. Repeat recurrence of takotsubo cardiomyopathy related to inhaled beta-2-adrenoceptor agonists. *World J Cardiol* 2012;4(6):211-3.
 68. Marabotti C, Venturini E, Marabotti A, Pingitore A. Delayed multifocal recurrent stress-induced cardiomyopathy after antidepressants withdrawal. *Heart Lung* 2014;43(3):225-30.
 69. Mulleners T, Dilling-Boer D, Benit E. How many times can a heart be broken? *Acta Cardiol* 2009;64(3):435-8.
 70. Novo G, Carita P, Ajello L, Assennato P. Chronic stress and early recurrence of takotsubo cardiomyopathy: a clinical case. *J Cardiovasc Echogr* 2014;24(3):83-5.
 71. Opolski G, Budnik M, Kochanowski J, Kowalik R, Piatkowski R, Kochman J. Four episodes of takotsubo cardiomyopathy in one patient. *Int J Cardiol* 2016;203:53-4.
 72. Patel K, Griffing GT, Hauptman PJ, Stolker JM. Recurrent takotsubo cardiomyopathy related to recurrent thyrotoxicosis. *Tex Heart Inst J* 2016;43(2):152-5.
 73. Pathak H, Esses J, Pathak S, Frankel R, Hollander G. A unique case of recurrent takotsubo cardiomyopathy. *South Med J* 2010;103(8):805-6.
 74. Rennyson SL, Parker JM, Symanski JD, Littmann L. Recurrent, severe, and rapidly reversible apical ballooning syndrome in status asthmaticus. *Heart Lung* 2010;39(6):537-9.
 75. Rotondi F, Manganelli F, Capasso M, Lanzillo T, Bellizzi G, Sauro R. Recurrence of tako-tsubo syndrome, idiopathic dilated cardiomyopathy, and iterative ventricular tachycardia: just a fortuitous coincidence or a pathophysiological link? *Eur Rev Med Pharmacol Sci* 2013;17(22):3117-20.
 76. Rovetta R, Bonadei I, Vizzardi E, D'Aloia A, Metra M. Syncope as presentation of recurrent tako-tsubo cardiomyopathy. *Minerva Cardioangi* 2014;62(4):366-8.
 77. Santoro F, Ferraretti A, Ieva R, Scarcia M, Correale M, De Gennaro L, et al. Recurrent tako-tsubo cardiomyopathy apparently induced by opposite triggers. *Int J Cardiol* 2013;165(1):198-9.
 78. Santoro F, Ieva R, Ferraretti A, Carapelle E, De Gennaro L, Specchi LM, et al. Early recurrence of tako-tsubo cardiomyopathy in an elderly woman with amyotrophic lateral sclerosis: different triggers inducing different apical ballooning patterns. *J Cardiovasc Med (Hagerstown)* 2016;17 Suppl 2:e266-8.
 79. Sardar MR, Kuntz C, Mazurek JA, Akhtar NH, Saeed W, Shapiro T. Recurrent takotsubo cardiomyopathy in the setting of transient neurological symptoms: a case report. *J Med Case Rep* 2011;5:412.
 80. Tokunou T, Sadamatsu K. Recurrence of takotsubo cardiomyopathy with coronary slow flow phenomenon. *J Cardiol Cases* 2012;5(2):e100-6.
 81. Uechi Y, Higa K. Recurrent takotsubo cardiomyopathy within a short span of time in a patient with hereditary motor and sensory neuropathy. *Intern Med* 2008;47(18):1609-13.
 82. Venditti F, Bellandi B, Parodi G. Fatal tako-tsubo cardiomyopathy recurrence after β_2 -agonist administration. *Int J Cardiol* 2012;161(1):e10-1.
 83. Vriz O, Martina S, Mos L, Pertoldi F, Pavan D, Citro R, et al. Early relapse of transient left ventricular apical ballooning syndrome in an 84-year-old woman. *J Am Geriatr Soc* 2009;57(10):1948-50.
 84. Wong CP, Chia PL. Recurrent takotsubo cardiomyopathy precipitated by myasthenic crisis. *Int J Cardiol* 2012;155(1):e11-2.
 85. Wu BT, Chu YY, Chen YT. Recurrent stress cardiomyopathy with different electrocardiographic abnormalities on each presentation in a depressed post-menopausal woman. *J Cardiol Cases* 2013;7(4):e104-8.
 86. Xu Z, Li Q, Liu R, Li Y. Very early recurrence of takotsubo syndrome. *Ann Noninvasive Electrocardiol* 2014;19(1):93-7.
 87. Yaoita H, Yamaki T, Mizugami H, Sakamoto N, Kawamura K, Ujiiie Y, et al. A case of recurrent chest pain with reversible left ventricular dysfunction and ST segment elevation on electrocardiogram. *Int Heart J* 2005;46(1):147-52.
 88. Yoshida T, Hibino T, Fujimaki T, Oguri M, Kato K, Yajima K, et al. The recurrence of tako-tsubo cardiomyopathy complicated by cardiogenic shock: a case report. *Int J Cardiol* 2009;134(3):e132-4.
 89. Carigi S, Santarelli A, Baldazzi F, Grosseto D, Santoro D, Piovaccari G. Recurrent takotsubo cardiomyopathy with

- similar clinical and instrumental signs. *Int J Cardiol* 2011;148(2):256-7.
90. Eitel I, von Knobelsdorff-Brenkenhoff F, Bernhardt P, Carbone I, Muellerleile K, Aldrovandi A, et al. Clinical characteristics and cardiovascular magnetic resonance findings in stress (takotsubo) cardiomyopathy. *JAMA* 2011;306(3):277-86.
 91. Shimokawahara H, Sonoda M, Tanaka H, Kashima K, Nagayoshi S, Kawasaki D, et al. Case of transient mid-ventricular ballooning syndrome with a rapid and uncommon recovery. *J Cardiol* 2009;54(2):311-6.
 92. Angelini P. Transient left ventricular apical ballooning: a unifying pathophysiologic theory at the edge of Prinzmetal angina. *Catheter Cardiovasc Interv* 2008;71(3):342-52.
 93. Balkin DM, Cohen LS. Takotsubo syndrome. *Coron Artery Dis* 2011;22(3):206-14.
 94. Angelini P. Takotsubo cardiomyopathy: establishing diagnosis and causes through prospective testing. *Tex Heart Inst J* 2016;43(2):156-7.