



# The sugar kelp *Saccharina latissima* II: Recent advances in farming and applications

Maren Sæther<sup>1</sup> · Nora Diehl<sup>2</sup> · Cátia Monteiro<sup>3,4</sup> · Huiru Li<sup>5</sup> · Sarina Niedzwiedz<sup>2</sup> · Bertille Burgunter-Delamare<sup>6</sup> · Lydia Scheschonk<sup>8</sup> · Kai Bischof<sup>2</sup> · Silje Forbord<sup>7</sup>

Received: 14 November 2023 / Revised: 9 February 2024 / Accepted: 12 February 2024  
© The Author(s) 2024

## Abstract

The sugar kelp *Saccharina latissima* has received intense scientific attention over the last decades. In recent years, interest in cultivation of the species has strongly increased in the North Atlantic Ocean and the Eastern Pacific Ocean, driven by the great potential of *S. latissima* to be utilised for various industrial applications, including food, feed, and biomaterials. Accordingly, current research has focused on improving farming methods and technology, environmental impacts, and site selection. In addition, many studies have investigated the varying chemical composition of *S. latissima*, extraction of commercially interesting components, and the use of the biomass and its derived components in various applications. This review provides a comprehensive overview of farming and applications of *S. latissima* from the last 15 years. Additional insights on other research topics, such as ecology, physiology, biochemical and molecular biology of *S. latissima*, are given in the first review, “The sugar kelp *Saccharina latissima* I: recent advances in a changing climate” (Diehl et al. 2023).

**Keywords** Seaweed aquaculture · Cultivation · Macroalgae · Biorefinery · *Saccharina latissima*

---

In memory of Dr. Klaus Lüning - a pioneer of *Saccharina latissima* research and cultivation.

---

Lydia Scheschonk is a independent.

---

✉ Silje Forbord  
silje.forbord@sintef.no

- <sup>1</sup> Seaweed Solutions AS, Bynesveien 50C, 7018 Trondheim, Norway
- <sup>2</sup> Marine Botany, Faculty of Biology and Chemistry, University of Bremen, 28359 Bremen, Germany
- <sup>3</sup> CIBIO, Research Centre in Biodiversity and Genetic Resources - InBIO Associate Laboratory, Campus of Vairão, University of Porto, Vairão, Portugal
- <sup>4</sup> BIOPOLIS Program in Genomics, Biodiversity and Land Planning, CIBIO, Campus of Vairão, Vairão, Portugal
- <sup>5</sup> Key Laboratory of Mariculture (Ministry of Education), Fisheries College, Ocean University of China, Qingdao 266003, China
- <sup>6</sup> Bioinformatics and Molecular Botany, Matthias Schleiden Institute of Genetics, Friedrich Schiller University Jena, 07743 Jena, Germany
- <sup>7</sup> Department of Fisheries and New Biomarine Industry, SINTEF Ocean AS, 7465 Trondheim, Norway
- <sup>8</sup> Bremen, Germany

## Introduction and Methodology

The sugar kelp *Saccharina latissima*, belonging to the Laminariales order, can be found across the North Atlantic, Pacific, and Arctic Oceans and has become the most farmed kelp species in Europe and North America in recent years. *S. latissima* biomass can be utilised for various industrial applications, including food, feed, and biomaterials. Accordingly, research has focused on improving and optimising farming methods and technology, carefully assessing environmental impacts, and site selection. In addition, several studies have investigated the chemical composition of *S. latissima*, extraction of commercially interesting components, and the use of the biomass and its derived components for various applications. In this review, we aimed to synthesise recent findings on farming, technology and environmental and industrial applications of *S. latissima*. We conducted a systematic literature search using popular scientific citation databases, namely Web of Science (WoS), Google Scholar and Scopus with the search word “*Saccharina latissima*”, together with the relevant search topics related to cultivation and/or application. The outcome was a review of 338 peer-reviewed research articles, selected book chapters, reports, and statutes published between 2009 and July 2023. Earlier

publications were only taken into account when necessary for the context. The authors do not compare the *S. latissima* biomass productivity and yield between the different studies since they all operate with different stocking- and line densities, farm scales, and cultivation systems. This review only summarises existing literature without aiming for data analyses, recalculations or interpretation. The authors highly encourage readers to read the cited papers of interest in detail to fully understand the setup and methodology.

## Wild harvest of seaweed

Seaweeds have traditionally been harvested from shorelines in most coastal communities worldwide for centuries and have played an important role in food, animal feed and fertiliser use. Around 26 countries still actively harvest seaweed from wild stocks, with around 1.1 million tonnes harvested annually (FAO 2021). As an example from Norway, *Laminaria hyperborea* and *Ascophyllum nodosum* harvested from wild stocks have been utilised in industry for more than five decades (Stévant et al. 2017b) and amounted to 163,000 tonnes of fresh weight in 2019 (FAO 2021). Primary applications include alginates or agricultural products like animal feed supplements and soil enhancers. The harvest of wild *L. hyperborea* remains controversial as the removal of and interference with natural habitats can affect local biodiversity, might negatively impact the abundance of gadoid fishes, and reduce the area of habitat preferred by foraging seabirds (Smale et al. 2013; Stévant et al. 2017b). Seaweed farming is a sustainable alternative to reduce further upscaling of the wild harvest industry but still expand the use of seaweed biomass for existing and new products and applications. The first attempts to cultivate the kelp *Saccharina japonica*, a close relative to *S. latissima*, has its history from the 1930s-1940s in northern China, and the breakthrough came at the end of the 1950s with the horizontal long-line method (Su et al. 2017). Seaweed cultivation is mentioned as one of four alternative options to increase marine food production since the capture of currently exploited marine fish stocks and other species has more or less reached its maximum and can only be slightly enhanced through better management (Van Der Meer et al. 2023).

## *Saccharina latissima* as a target species in seaweed farming

There is a strong regional imbalance in seaweed production. In 2019, production in Asia contributed 97.4% of the worldwide seaweed production, reaching almost 35 million tonnes, while America and Europe had a share of 1.4 and 0.8%, respectively, and most came from wild harvest (Cai

et al. 2021). Around 30-40% of the global seaweed production is consumed directly as food, and the most common seaweed taxa for cultivation are the brown algae *S. japonica* (kombu), *Undaria pinnatifida* (wakame) and *Sargassum fusiforme* (hiziki), together with the red algae *Euचेuma* spp. and *Kappaphycus alvarezii* (both for carrageenans), *Gracilaria* spp. (for agar) and *Porphyra/Pyropia* spp. (nori) (Buschmann and Camus 2019; Chopin and Tacon 2021). The industry sector uses the majority of seaweed biomass as polysaccharide additives and functional food ingredients, and the non-food sector as hydrocolloid products in nutraceuticals, pharmaceuticals, and cosmetics, and to a lesser extent as fertilisers, biofuels, bioplastics, and other industrial outputs (Naylor et al. 2021).

Although seaweed farming in the Western part of the world contributes to a minimal fraction of the world's production, this is an emerging industry fuelled by its potential contribution to climate change mitigation and an environmentally friendly bioeconomy (Van Den Burg et al. 2021b; Heidkamp et al. 2022). *Saccharina latissima* (Linnaeus) C.E.Lane, C.Mayes, Druehl & G.W.Saunders (Lane et al. 2006) is one of the most economically and ecologically relevant species for cultivation in the north Atlantic and Pacific and is considered the fastest-growing species of cultivated kelp, with annual production capacities estimated at 75-200 tonnes wet weight per hectare at sea (Broch et al. 2013, 2019; Holdt and Edwards 2014). Due to various industrial applications and several other benefits, such as available cultivation protocols and a relatively easy species to succeed with, *S. latissima* has developed into one of the most important species in aquaculture.

New consumer trends, market demands and opportunities for multiple uses of *S. latissima*, such as food (Slegers et al. 2021), bioactive components (Holdt and Kraan 2011), feed (Samarasinghe et al. 2021a), fertilisers (Marinho et al. 2016) and biofuels (Fernand et al. 2017) have strengthened the motivation for industrial macroalgal cultivation in Western countries. Another driver for the increased interest is utilising ecosystem services (nutrient uptake) to reduce the eutrophication of coastal waters (Boderskov et al. 2023). *Saccharina latissima* has been cultivated in modest amounts during the last two decades in the North Atlantic Ocean, e.g., the United States (Kim et al. 2015), Canada (Lafeuille et al. 2023), Spain (Freitas et al. 2016), Portugal (Azevedo et al. 2019), Faroe Island (Bak et al. 2019), Iceland (Stefaniak-Vidarsson et al. 2019), Norway (Forbord et al. 2020a), United Kingdom (Schultze-Jena et al. 2022), Ireland (Dolliver and O'Connor 2022), Denmark (Bruhn et al. 2016), Sweden (Hasselström et al. 2018), France (Monteiro et al. 2020), Germany (Buck et al. 2017), and in the Netherlands (Jiang et al. 2022a) as well as in the Eastern Pacific Ocean, e.g., Alaska (Raymond and Stekoll 2021; Stekoll et al. 2021). As an example, the cultivation of *S. latissima* was

initiated almost 15 years ago in Norway with small-scale experiments (Forbord et al. 2012; Stévant et al. 2017b). The cultivation is currently in an early commercial phase, with 221 t reported sold in 2022 (161 t *S. latissima* and 60 t *Alaria esculenta*) (Directorate of Fisheries 2023). Around 15 seaweed farmers along the Norwegian coast contributed to the production and primarily sold their biomass as a raw material to Europe's food and feed market.

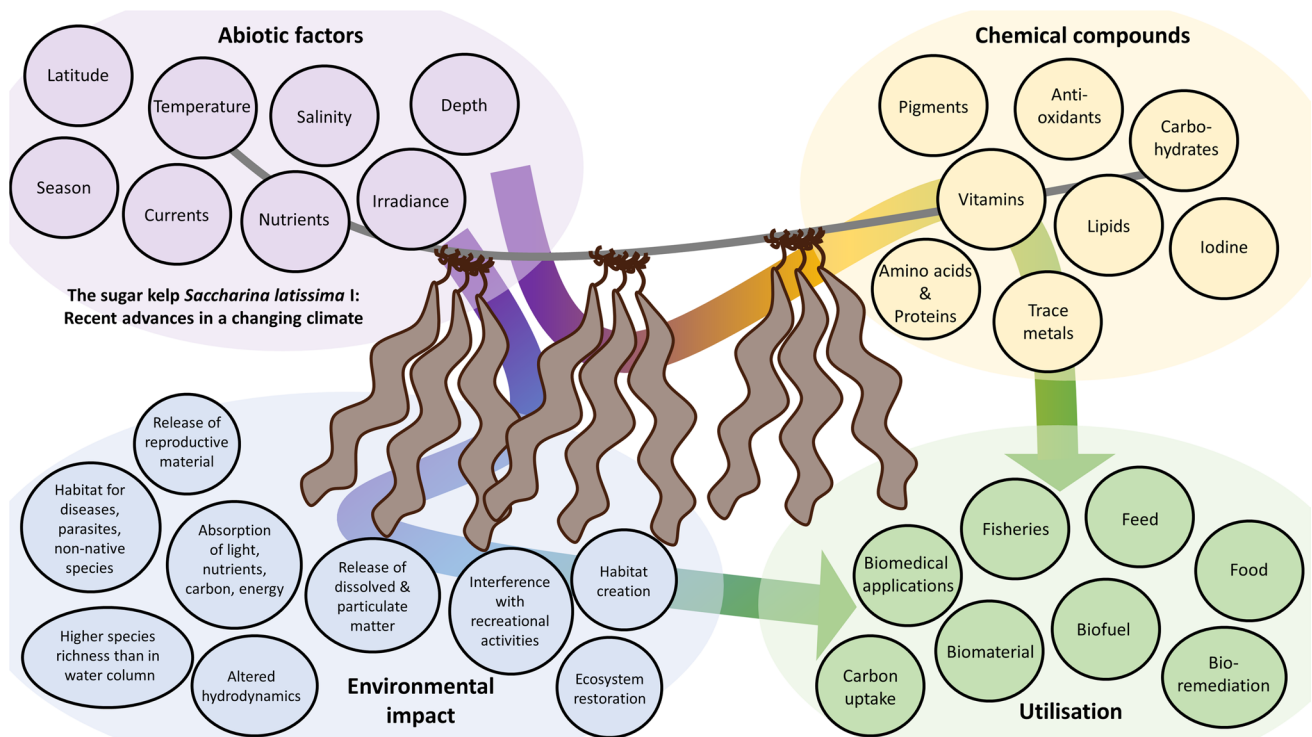
Figure 1 summarises abiotic factors influencing *S. latissima* cultivation (top left). This has been extensively reviewed by Diehl et al. (2023) and is not covered in the current review. Further, the figure shows which critical ecosystem services are provided by *S. latissima* farming and potential associated risks (bottom left), which chemical compounds can be extracted and utilised (top right) and contributions of *S. latissima* biomass to the blue economy (bottom right).

## Cultivation strategies - Nursery

Several cultivation protocols have been established for *S. latissima* over the last decade, providing detailed information necessary for performing cultivation experiments (Flavin et al. 2013; Redmond et al. 2014; Peteiro et al. 2016;

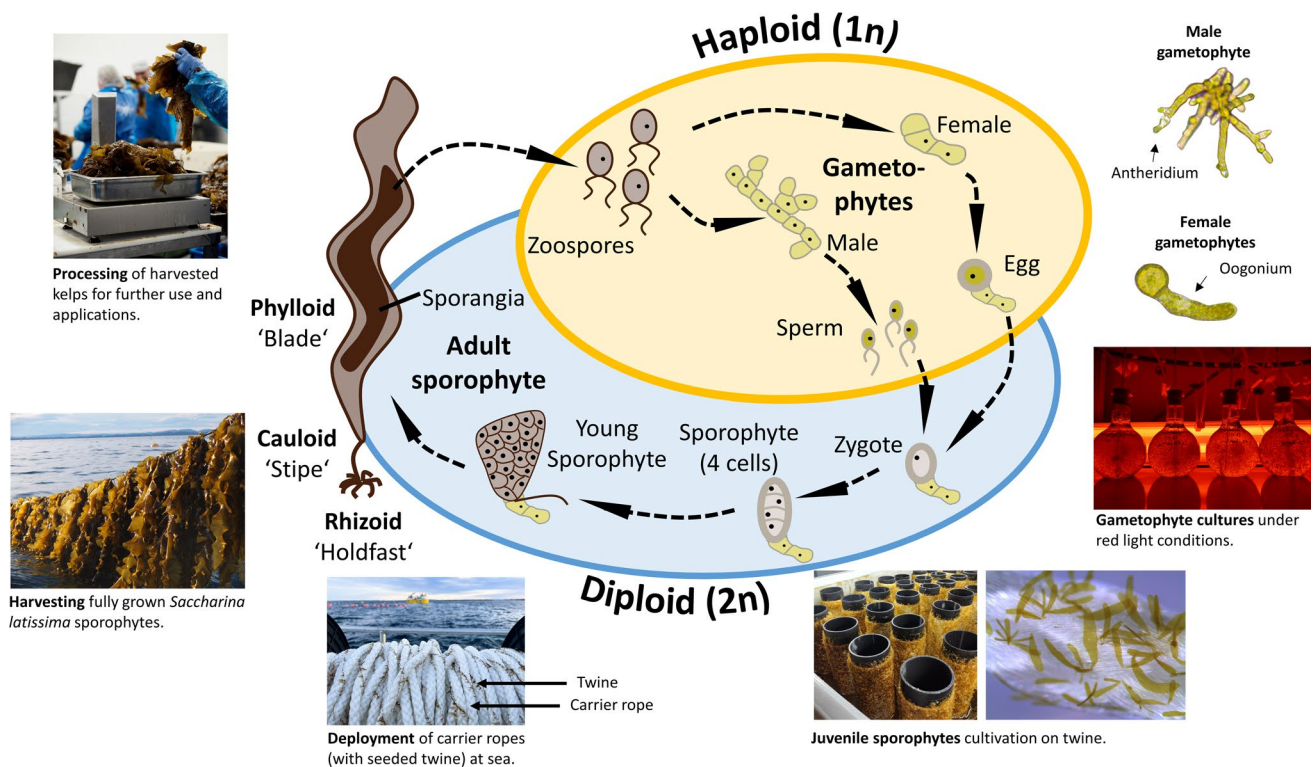
Forbord et al. 2018; Theodorou et al. 2021). However, there is a need to further optimise production methods and protocols to achieve predictable biomass production of high quality and an economically viable business.

The cultivation process for *S. latissima* consists of two major stages: a nursery stage on land that provides conditions necessary for the development of microscopic gametophytes through their sexual phase and the subsequent development of juvenile sporophytes/seedlings for seeding on substrates suitable for deployment at sea; and a sea-farming stage that involves the on-growth of sporophytes until they reach a suitable size and quality for harvesting (see detailed life cycle in Fig. 2). Three main strategies exist to produce *S. latissima* seedlings before deployment at sea: seeding the growth substrate with either 1) zoospores, 2) gametophytes or 3) juvenile sporophytes. The settlement of spores or gametophytes (propagules) and their development into juvenile sporophytes in the nursery can be manipulated by light, nutrients, substrate surface conditioning and the addition of germanium dioxide ( $\text{GeO}_2$ ) to control contamination by diatoms (Shea and Chopin 2007; Kerrison et al. 2016), as well as oscillatory water motions (Kregting et al. 2023). By manipulating the nursery conditions, the time required for spores to develop into juvenile sporophytes ready for



**Fig. 1** Impacts of *Saccharina latissima* farming. Abiotic factors of the environment (e.g. temperature, irradiance) influence the physiology, biochemistry and performance of *S. latissima* (see more in Diehl et al. (2023)). This affects the concentration of chemical compounds in the sporophytes (e.g., vitamins, carbohydrates), which determines

the use of *S. latissima* (e.g., for food, feed, biomaterial). Further, the presence of *S. latissima* farms impacts the environment (e.g., by altering the water hydrodynamics, creating habitat for associated species). The use of *S. latissima* farms is also promoting further sectors (e.g., fisheries, carbon uptake)



**Fig. 2** Life cycle of *Saccharina latissima*. The life cycle of *S. latissima* can be split into a diploid (blue) and a haploid (yellow) phase. Adult sporophytes (2n) release zoospores, which grow into female or male gametophytes (1n). Female gametophytes release eggs (1n); male gametophytes release gametes (1n). Egg and gametes will fuse

to zygotes (2n), which grow into sporophytes (2n). Photographs show how the different farming steps are implemented in the life cycle of *S. latissima*. Photos: Seaweed Solutions, SINTEF Ocean and I. Bartsch. Modified after Diehl et al. (2023)

deployment can be minimised, survivorship maximised, and costs associated with the land phase can be decreased. Seeding with spores requires fertile sporophytes with mature sori and is seasonal-dependent if these are collected in natural habitats. However, fertility can also be induced by removing the meristematic tissue, placing the sporophytes under an artificial day rhythm with a short-day regime, thus enabling access to spores independent of season (Forbord et al. 2012). Sporogenesis in *S. latissima* can also be induced efficiently out of season in total darkness (Boderskov et al. 2021).

Gametophytes, the microscopic, haploid life stage of *S. latissima*, can be kept in continuous cultures under red light for years, multiplied by periodical mechanical disruption of the filaments, renewal of the growth medium and then be available for seeding substrates or further development into juvenile sporophytes for direct seeding (Mols-Mortensen et al. 2017; Augyte et al. 2020; Ebbing et al. 2020; Forbord et al. 2020b; Kerrison et al. 2020), or for breeding experiments (Goetze et al. 2020, 2022;). This method is advantageous as incubation facilities can be shortened by several weeks or omitted completely by direct seeding using a binder to adhere the propagules to the substrate (Kerrison et al. 2020). A considerable amount of research has been

undertaken over the recent years to understand the gametophyte biology, development and quality relating to several biotic and abiotic factors, such as age, density, seasonality, sex ratio, light, temperature, and nutrients (Nielsen et al. 2016a; Ebbing et al. 2020, 2021a, b; Raymond and Stekoll 2021; Boderskov et al. 2022). A bioreactor system that overcomes several implementation challenges for this controlled reproductive method, expanding the possibility of clonal gametophyte cultivation outside of expensive laboratory settings, has been validated (Ebbing et al. 2022). This system's three goals include maintaining clean gametophyte clonal cultures in non-sterile environments over prolonged periods, producing large numbers of juvenile sporophytes, and effective transportation of gametophytes and sporophytes.

Limited information exists on which seeding strategy yields the highest biomass at sea, and economic feasibility studies are necessary to guide seaweed farmers into choosing the right method for their business. The effect of using a binder for direct seeding and choosing suitable seeding substrates have been examined in a few studies over the past years (Kerrison et al. 2017, 2018b, 2019a, b). One study showed that the binder-seeding method using a commercial binder is an effective method of allowing textile substrates to

be seeded for macroalgal cultivation (Kerrison et al. 2018a). Sporophyte seeding resulted in twice the final biomass yield compared with gametophyte seeding due to a two to three weeks developmental lag, while zoospore seeding without using a binder gave very poor results (Kerrison et al. 2018a). It is also shown that binder seeding can produce a similar or higher biomass yield during harvesting compared to the traditional twine-longline method. Morphological changes were observed, and the length distribution of the different experimental populations varied greatly due to differences in seeding density (Kerrison et al. 2020). They concluded that these differences are expected to impact the biochemical composition of the biomass and that the seeding method should be selected depending on the end use of the biomass. Another study tested two binder types (agar and  $\kappa$ -carrageenan) under two ecologically relevant flow regimes (5 and 15 cm s<sup>-1</sup>) and a control condition (0 cm s<sup>-1</sup>) in a laboratory flume (Visch et al. 2023). The results show no differences in results between the binder and non-binder treatments, and the results were also unaffected by the different flow velocities. In another study, a commercial binder was found to be more effective than any formulations of calcium alginate tested, but a detachment of 70-80% of the sporophytes was detected when keeping the seeded ropes under aeration compared to no water motion (Umanzor et al. 2020). These findings suggest that novel methods and further development of the binder-seeding method are highly recommended.

Three seeding methods (zoospore seeding on twine, gametophyte seeding on twine and direct seeding with gametophytes and juvenile sporophytes using a commercial binder) with different nursery periods were compared in a Norwegian case study by deploying *S. latissima* seedlings and comparing yields after 80 and 120 days on-growth at sea. The findings showed that seeding with zoospores pre-cultivated in the nursery for 42 days before deployment gave significantly longer fronds and a higher biomass yield at sea than any other seeding method (Forbord et al. 2020b). The seeding methods did not affect the biomass's protein content when harvested. A Danish study compared biomass yield and quality between direct seeding and traditional spore seeding on twine and two substrates, including three deployment times at three different cultivation sites (Boderskov et al. 2021). The main findings showed that the direct seeding method gave yields comparable to the traditional seeding method with spores at the most exposed site, whereas at the sheltered sites, the highest biomass yield was achieved using the traditional spore seeding method. The seeding method did not affect the biomass quality, but the quality differed significantly between sites. Another method of transplanting young fronds of *S. latissima* around 40 cm in length from indoor greenhouse tanks to sea has proved to be a technically and biologically viable method for obtaining good growth

and productivity (Peteiro et al. 2014) but has not been further employed.

For nursery operations that do not have access to flow-through deep water with high concentrations of essential nutrients year-through (Forbord et al. 2012), frequent water exchange and nutrient addition are necessary for fast and efficient seedling production (Boderskov et al. 2021). For a seaweed producer to be organic certified, conventional fertilisers cannot be used in the nursery, so six potential organic certified nitrogen (N) sources, all with N concentrations up to 150  $\mu$ M (degassed manure, protamylase, three commercial liquid fertilisers and mussel excreted ammonium) have been investigated to see how they affect the growth and early stage development of *S. latissima* juvenile sporophytes (Boderskov et al. 2022). Results showed that spore germination was generally unaffected by either N source or concentration, but impaired gametogenesis and slower growth were found for all N sources and at concentrations higher than 100  $\mu$ M N. Further development is needed before the organic nutrient sources can substitute conventional fertilisers in an efficient commercial nursery (Boderskov et al. 2022). Several experiments have examined new stimulants to enhance *S. latissima* growth in the nursery. Preliminary results indicate that a marine plant extract powder (AMPEP, Acadian Seaplants, Ltd.) may enhance the growth capacity of *S. latissima* when exposed to suboptimal temperatures, allowing them to overcome heat stress more effectively while maintaining growth (Umanzor et al. 2019). A more recent study investigated the potential of Kelpak® (a seaweed extract from *Ecklonia maxima*) as a useful biostimulant to enhance juvenile sporophyte growth of *S. latissima* while in the nursery. It also provides insights into practical applications to enhance the species' thermal tolerance before deployment at sea, which could result in a competitive advantage compared to non-treated individuals (Umanzor et al. 2020).

For the future of seaweed aquaculture, in order to meet the expanding industry's raw material needs, nursery production should increase alongside ocean cultivation. An extensive literature review has been undertaken to quantify the *S. latissima* nursery production costs and identify the potential barriers to cost-effective scaling (Coleman et al. 2022). The most important research priorities identified for optimising the nursery were to reduce the sporophyte grow-out duration, increase the labour capacity, develop energy-efficient flowthrough systems, and minimise the facility size by optimising equipment used in production.

## Cultivation strategies - Sea cultivation

There is a great need for cultivation management strategies that produce specific crop characteristics, optimise yield, widen the harvesting window, and lower the investment- and

operational costs. Site selection is one of the biggest challenges and a critical issue when setting up a new seaweed farm and upscaling possibilities. The response of *S. latissima* to several important physical and chemical parameters that will vary between sites, like temperature, salinity, water motion, nutrient concentrations, carbon dioxide/pH, light and ultraviolet radiation, have a significant impact on the cultivated biomass (Kerrison et al. 2015). Numerous studies with *S. latissima* have shown extreme variation in growth, quality and chemical composition between different locations (Peteiro and Freire 2013; Nielsen et al. 2014; Bruhn et al. 2016; Mols-Mortensen et al. 2017; Matsson et al. 2019; Forbord et al. 2020a; Boderskov et al. 2021; Thomas et al. 2022; Wang et al. 2022). The same applies to the deployment time and depth (Peteiro and Freire 2009; Handå et al. 2013; Sharma et al. 2018; Matsson et al. 2021).

Models can be an important tool to quantify kelp growth during different seasons and environmental conditions (Broch and Slagstad 2012; Venolia et al. 2020) and are particularly interesting to use for open ocean and offshore conditions, which are largely untested (Strong-Wright and Taylor 2022). Offshore cultivation can solve conflicts with other uses of coastal areas, such as fishing, aquaculture, and recreational activities. Also, farms can preferably be located with other compatible activities, such as wind energy production, to optimise costs and operation. Earlier experiments and projects working with offshore and Multi-Use Aquaculture (combining various uses at one site) with cultivated *S. latissima* have been summarised in an earlier review (Buck et al. 2017).

The cultivation potential of *S. latissima* has been evaluated as a function of latitude and near- and offshore position along the Norwegian coast using a coupled 3D biophysical model system (Broch et al. 2019). The model results were compared with growth data from kelp cultivation experiments. The model demonstrated a higher production potential offshore than in inshore regions, mainly due to limitations in nutrient availability. The results also indicated a latitudinal effect on the timing of peak growth, similar to the results found in cultivation experiments along the Norwegian coast (Forbord et al. 2020a). It is also found that *S. latissima* grows well under offshore conditions at the species' southern distribution limit in northern Portugal in the first half of the year (Azevedo et al. 2019), while at the Swedish west coast growth generally increased with decreased wave exposure, with approximately 40% less growth at exposed locations compared to sheltered or moderately exposed locations (Visch et al. 2020b). The hydrodynamic conditions under offshore cultivation have been found to change the morphological features of cultivated *S. latissima* (Peteiro and Freire 2011) and affect the frond surface shape (Zhu et al. 2021a). Even though offshore seaweed farming can give higher yields than coastal locations, installations of

offshore structures can be challenging and expensive. An offshore long-line macroalgal cultivation rig was developed and tested in the Faroe Islands in 2010 and found appropriate for cultivation in exposed and deep water locations (water depth > 50 m), and the economic risk related to lost cultivation structures is deemed to be low (Bak et al. 2018, 2020). Detailed numerical models based on high-fidelity datasets of engineering parameters are essential when *S. latissima* farms move into more exposed and offshore conditions, and the aim is to produce high volumes of biomass (Fredriksson et al. 2023).

Removing the distal end of long fronds can offer biological benefits such as increased sunlight and nutrients for the remaining thalli and increased overall growth (Grebe et al. 2021b). The high cost of seeding material and deployment was reduced by testing multiple partial harvesting in the Faroe Islands where only the fronds were cut off, leaving haptera, stipes and 5-15 cm of the fronds (a method also known as coppicing). This cutting length was used to preserve the meristematic zone to allow re-growth. Four non-destructive harvests were conducted during a two-year growth period without re-seeding the lines (Bak et al. 2018). In Denmark, it was found that the use of coppicing enabled multiple harvests of *S. latissima*, but the quality of the biomass was reduced in the second year due to biofouling (Boderskov et al. 2023). In the Shetland Islands, *S. latissima* has been identified as a potential candidate for regrowth and multiple harvests within a single growing season, but the growth period is limited by the biofouling that occurs in late summer (Rolin et al. 2017).

Fouling by epibionts on *S. latissima* fronds is a challenge for seaweed farmers and usually occurs from spring to autumn, depending on location, latitude, and inter-annual variation. Epibionts, and in particular encrusting bryozoan, grow as colonies that cover the frond surface and form a barrier inhibiting nutrient and light absorption (Andersen et al. 2019) and often cause loss of biomass due to increased drag and friction and decreased flexibility (Krumhansl et al. 2011). Other common epibionts on *S. latissima* are hydroids, crustaceans, bivalves, sponges, tunicates, snails, benthic diatoms, and filamentous algae (Krumhansl et al. 2011; Forbord et al. 2020a; Corrigan et al. 2023) and bacterial colonies (Liu et al. 2022; Burgunter-Delamare et al. 2023). Biofouling makes seaweed biomass less appealing for human consumption and affects the commercial value of the yield. To avoid biomass loss and reduced value, kelp is usually harvested before the onset of epibionts (Marinho et al. 2015b; Førde et al. 2016; Matsson et al. 2021). Harvesting at different times for different usage of *S. latissima* biomass could be a viable option, or if the seaweed is left unharvested, the epibionts can contribute to local biodiversity and fisheries enhancement and additional ecosystem services, including biofiltration and nutrient regulation (Marinho et al. 2015c;

Corrigan et al. 2023). Site selection can be an essential tool for controlling the biofouling on seaweed fronds. A study in northern Norway showed that biomass yield and biofouling can vary significantly within short geographical ranges, underlying the importance of thorough site selection for *S. latissima* cultivation, to achieve maximum kelp biomass and minimum biofouling (Matsson et al. 2019). It has been investigated that the onset of biofouling follows a latitudinal pattern with delayed onset in northern locations (Forbord et al. 2020a). Biofouling on *S. latissima* is also found to decrease with increased wave exposure (Peteiro and Freire 2013; Visch et al. 2020b), at freshwater-influenced sites (Forbord et al. 2020a), with increasing depth (Førde et al. 2016), at lower seawater temperature (Wang et al. 2022) and higher nutrient levels (Wang et al. 2022). A complete absence of epiphytic animals throughout the year has been found for tank-grown *S. latissima*, probably mainly due to the mechanical prevention of larval settlement in tank tumble culture (Lüning and Mortensen 2015).

Developing cultivars for improved traits like low affinity for biofouling, high biomass production and increased content of valuable compounds could be of great importance for the future seaweed industry. Local genetic material and technologies to prevent hybridisation between cultivated and wild populations are important elements in seaweed's responsible and sustainable utilisation. The use of local strains is highly recommended in several Scandinavian countries, and breeding is not yet recommended as a tool to obtain the wanted traits of *S. latissima* (Hasselström et al. 2018; Barbier et al. 2019; Goecke et al. 2020). Investigations in Norway have shown that the natural population of *S. latissima* is separated into three distinct genetic groups corresponding to distinct geographical ecoregions along the coast (Evankow et al. 2019), and it is suggested that the Norwegian Coastal Current strongly influences genetic connectivity between populations on the coast (Neiva et al. 2018; Ribeiro et al. 2022). Microsatellite analysis of 14 populations sampled across the northern part of the Irish Sea indicated four distinct genetic clusters (Mooney et al. 2018). Results from Denmark showed that the *S. latissima* populations were structured into two clusters corresponding to brackish versus marine sites; also, gene flow was reduced between clusters and populations within clusters (Nielsen et al. 2016b). In Maine, it is found that populations are finely structured across small spatial scales due to a strong influence of the Eastern Maine Coastal Current, as well as geographic isolation associated with major bays (Breton et al. 2018). Future management and farming efforts in this area should maintain genetic diversity and assess the cultural potential of local populations. One should prevent the translocating of *S. latissima* between ecoregions to maintain a healthy coastal ecosystem and natural population genetic diversity. An initial simple and low-cost breeding strategy

based on recurrent mixed hybridisation and phenotypic selection within local populations is proposed for *S. latissima* and other kelp species (Goecke et al. 2020). Crossing of different *Saccharina* species can also serve as a novel strategy to meet the expanding demands of the *S. latissima* farming industry. Findings suggest that *S. latissima* crossed with the skinny kelp *S. angustissima* provides improved yield compared to pure *S. latissima* crosses (Li et al. 2022). This work is part of a selective breeding program for regional strains of *S. latissima* to improve the competitiveness of kelp farming in the United States (Augyte et al. 2021; Umanzor et al. 2021). The capacity to conserve genetic diversity for breeding programs aimed at developing seed stock for onward cultivation is a key feature, and cryopreservation can be a useful preservation method for male and female *S. latissima* gametophytes. It can also be an attractive option for long-term preservation (Visch et al. 2019).

## Technology development and upscaling

Seaweed can enhance flavour and enrich food with dietary fibres, antioxidants, iodine and other minerals and vitamins (Roleda et al. 2018; Sappati et al. 2019). The amount of seaweed currently cultivated in the Western world to produce such products is sufficient, but if the market is aiming for other uses, e.g., feed ingredients, fertilisers and biofuels, the production needs to be massively upscaled. Industrial, cost-effective cultivation requires novel technology applied to the whole production line, targeting mechanisation and automation of the seedling production, deployment at sea and harvesting operations. The solutions used in the Western world today are time- and resource-demanding, yielding low volumes. A strategy for increasing the area yield of cultivated *S. latissima* can be to optimise the cultivation infrastructure by using a net system instead of a multi-layer single-line system or to increase the cultivation line density in the upper water column (Boderskov et al. 2023). Improving existing technology and designing new solutions to seed and deploy long-lines effectively, with minimum workload, is getting a lot of attention and will help reduce labour- and production costs (Verdegem et al. 2023). The design of aquaculture systems also requires understanding the drag forces on cultivated *S. latissima* (Lei et al. 2021). An example of recently developed technology for *S. latissima* farming is a mobile, inexpensive, easy-to-deploy system that was developed and tested for exposed sea conditions in Maine (USA) and gave a high yield ( $12.7 \text{ kg m}^{-1}$ ) over an 8-month fall-winter growth period (St-Gelais et al. 2022). As a second example, a design study in Norway came up with a module-based solution for industrial seaweed cultivation, with specific solutions for spinning seeded twine onto long lines and a robotic module

for interaction with a submerged farm at deployment and harvest (Solvang et al. 2021).

Production cost for *S. latissima* biomass is still very high, and for biofuel purposes, estimation showed that costs were higher per dry tonne at farm scales of 1000 ha or more in waters up to 200 km from shore (US\$ 200–300 t<sup>-1</sup> dry) compared to production in farms closer to shore with optimal growth conditions (\$100 per tonne dry), the latter situation making seaweed economically competitive with land-based biofuel feedstocks (Kite-Powell et al. 2022). Using economic modelling, a study from the North Sea concluded that offshore *S. latissima* production was not yet economically feasible (Van Den Burg et al. 2016). Several opportunities to improve the economic feasibility of a North Sea seaweed value chain were identified, like technical innovation and systems enabling multiple harvests per year and further development of the biorefinery concept and a more defined end-market.

To produce large quantities of *S. latissima*, large-scale sea cultivation is the only viable solution. On the other hand, advantages of land-based cultivation include better control of the cultivation system, easy access to the produced biomass regardless of season or the weather conditions, and increased potential to be used for bioremediation for land-based aquaculture. In such systems, it is easy to manipulate key resources, such as light intensity and nutrient loading, with combinations that do not usually occur in the sea and, thus, have higher control over biomass yield, chemical composition, and epiphytes (Lüning and Mortensen 2015; Azevedo et al. 2016; Boderskov et al. 2016; Jevne et al. 2020). If the emerging market of functional products from seaweed for human consumption is considered, which requires traceability and security of supply, land-based cultivation can be essential for this production, allowing the highest levels of control (Hafting et al. 2012), but thorough feasibility studies for *S. latissima* are still missing.

## Potential for carbon capture

Carbon sequestration by coastal vegetation has drawn significant attention over the last two decades, especially after the conception of “Blue Carbon” released by a UN report in 2009 (Nellemann and Corcoran 2009; Macreadie et al. 2021). Besides mangroves, salt marshes and seagrass meadows, as the recognised “blue carbon” contributors, there is an ongoing evaluation and debate about the role of macroalgae in carbon sequestration (Macreadie et al. 2019; Filbee-Dexter et al. 2023; Troell et al. 2023). Specifically, the well-recognized definition of carbon sequestration is the CO<sub>2</sub> removal from the atmosphere and secure carbon storage for at least 100 years (GESAMP 2019; Hurd et al. 2022; Troell et al. 2023). However, while macroalgae

constitute the most productive coastal ecosystems, their contribution to long-term carbon storage remains hard to trace and calculate. The time-span of carbon storage by macroalgae is questioned because macroalgae themselves are relatively short-lived, and their biomass enters the trophic network (e.g., consumption via food, feed and fuels) in a large proportion, which does not directly contribute to long-term sequestration (Hughes et al. 2012; Troell et al. 2023). Hence, the carbon assimilated by macroalgae in their biomass is generally considered carbon storage in a broader sense and lasts over various timescales (Hurd et al. 2022). However, multiple studies have illustrated that macroalgae likely contribute to long-term carbon storage via three well-established sequestration pathways, including the carbon burial in sediments, the transport of macroalgal carbon into the deep sea, and the secretion of compounds in the form of recalcitrant dissolved organic carbon (RDOC), which can be stored in seawater for hundreds or even thousands of years (Li et al. 2022; Pessarrodona et al. 2023). According to simulation results from coastal and oceanic hydrodynamic models, particulate organic matter (POM) from kelp aquaculture may be transported from a few hundred metres up to a hundred kilometres away from the release site, depending on the sinking rates, time of release, and the location properties (sheltered, exposed or offshore). The depth at which POM settles on the sea floor likewise depends on the properties of the POM and the bathymetry of the receiving sites (Broch et al. 2022). A rough estimate suggests that about 173 Tg C year<sup>-1</sup> (range: 61–268 Tg C year<sup>-1</sup>) could be sequestered by macroalgae globally, which is higher than the amount buried in angiosperm-dominated coastal habitats (Duarte et al. 2005; Krause-Jensen and Duarte 2016).

Furthermore, about 88% of this carbon sequestration is contributed by organic carbon transported to the deep sea, and the rest is via burial in coastal sediments, resulting in a small proportion of local carbon sequestration (Krause-Jensen and Duarte 2016). To date, efforts to establish a framework for accounting carbon flows in macroalgae are ongoing and face various challenges. Here, we summarise the research progress of *S. latissima* related to its potential for long-term carbon storage. Although limited by methodology and definition updates, the current works may not address the fluxes directly leading to long-term carbon storage but provide a baseline for further research.

The amount of biomass released to the environment was quantified to evaluate the potential carbon sequestration rates of *S. latissima* in a kelp farm off Northern Ireland (Dolliver and O’Connor 2022). This investigation showed that about 41% of the net primary productivity (NPP) of cultivated *S. latissima* was lost because of tissue loss before harvest. About 4% of the carbon in fronds falling off the rope can be attributed to sequestration in sediments on the continental



shelf, while 10% can be attributed to sequestration in the deep sea (Krause-Jensen and Duarte 2016). Hence, an average carbon sequestration of 7.4 kg was generated per 100 m longline during the cultivation period (Dolliver and O'Connor 2022). An additional 43% of NPP may have been lost by long-term erosion and exudation of organic carbon, though it is a coarse estimate and needs further verification. Still, when this estimated carbon sequestration rate of *S. latissima* meets the agroforestry schemes funded by several governments, it largely promotes the sustainable development of the *S. latissima* aquaculture industry that could, in turn, be used as carbon credits. Another experiment conducted in Long Island Sound and the Bronx River Estuary, USA, revealed via monitoring the tissue C content that cultivated *S. latissima* could capture carbon into biomass from 1100 to 1800 kg C ha<sup>-1</sup>, assuming that it was cultivated with 1.5 m spacing between longlines (Kim et al. 2015). Besides, the harvest time plays an important role in carbon sequestration of *S. latissima* (Fieler et al. 2021). The late harvest in August can increase biomass losses by up to 49% of the annual production, which exports more carbon and increases the potential for long-term carbon sequestration. It should be noticed that the burial of *S. latissima* particulate organic carbon (POC) may lead to organic enrichment in sediments, which is likely to increase the turnover and oxygen depletion (Boldreel et al. 2023). Therefore, the operational management of *S. latissima* cultivation could be adjusted based on the specific objective, either by harvesting early for high-quantity and quality food or late for higher carbon exportation (Fieler et al. 2021). By conducting the total carbon footprint accounting, including both carbon capture by *S. latissima* biomass and the embodied carbon footprints of system inputs, four *S. latissima* cultivation systems built in Denmark are regarded as carbon-negative, contributing to greenhouse gas emission reduction of 174–1160 kg CO<sub>2eq</sub> ha<sup>-1</sup> year<sup>-1</sup> (Zhang et al. 2022). In Greenland, wild floating macroalgal biomass was mostly retained within the Nuup Kangerlua Fjord, with unknown carbon sequestration potential. Only 6.92 t C year<sup>-1</sup> of the biomass was exported beyond the fjord (Ager et al. 2023). In sediment cores collected on the northwest coast of Norway at depths between 200–500 m, a qPCR approach was applied to detect and quantify the kelp species present in the sediments. *S. latissima* was much less common than *L. hyperborea*, and when present, its quantities were lower (Frigstad et al. 2021). The contribution of the two kelps for the total carbon captured in the sediments was 10–32%. The environmental DNA (eDNA) fingerprinting illustrates that macroalgae are prevalent contributors to carbon stocks in arctic surface sediments, with brown algae dominating (Ørberg et al. 2023).

The climate benefits of seaweed aquaculture might be further enhanced by mechanically sinking the biomass into the deep sea for carbon sequestration. However, this solution currently lacks sufficient scientific evidence and governance

and may lead to unintended environmental and social consequences (Ricart et al. 2022). Hence, the large-scale seaweed sinking must be further investigated by long-term research projects and large-scale demonstrations to provide evidence of permanent and additional climate benefits (Hasselström and Thomas 2022; DeAngelo et al. 2023; Wu et al. 2023). A kelp aquaculture bio-techno-economic model in which large quantities of *S. latissima* would be farmed at an offshore site, transported to a deep water “sink site”, and then deposited below the sequestration horizon has been developed to quantify the baseline costs and identify potential optimising strategies for kelp carbon dioxide removal (CDR) (Coleman et al. 2022). According to the model, the spatial sequestration rate and unit costs of kelp CDR would be 0.6 t CO<sub>2eq</sub> and US\$17,048 t CO<sub>2eq</sub><sup>-1</sup>, respectively, with an “additionality” rate (AR) of 39%. AR describes the extent to which a carbon credit results in a reduction in emissions or removal of carbon that would not otherwise have happened. Following parameter optimisation, expenses decreased to US\$1,257 t CO<sub>2eq</sub><sup>-1</sup>, and AR rose to 91%. Carbon fluxes during the macroalgae open ocean mariculture and sinking (MOS) process were computed by integrating a macroalgae model into an Earth system model (Wu et al. 2023). Carbon captured and exported by MOS is 270 Pg C, with artificial upwelling (AU) adding to 447 Pg C. Due to feedback in the Earth system, the oceanic carbon stores only increase by 171.8 Pg C (283.9 Pg C with AU) in the idealised scenarios. Currently, ambiguities in monitoring, reporting, and verification (MRV), high production costs, and energy-intensive processes may restrict the effective kelp CDR (Coleman et al. 2022). To achieve the full benefit of *S. latissima* cultivation as a climate solution, MRV standards and improved methods for assessing carbon uptake and permanence need to be developed thoroughly (Rose and Hemery 2023).

Another solution for using *S. latissima* for CDR is biochar production. Biochar is a sustainable carbonaceous material with applications in diverse areas. Biochar can improve soil quality by increasing the organic content, and is deemed a negative emission technology through carbon sequestration (Deng et al. 2020). Seaweed biorefineries, on the other hand, have been shown a great potential for carbon capture and storage (CCS)/carbon capture, utilization, and storage (CCUS) systems (Hong 2022). As one of the fermentation products, seaweed-based biochar has been investigated for carbon absorption (Yang et al. 2022; Dang et al. 2023).

In a critical review of the life cycle climate impact in seaweed value chains to support carbon accounting and blue carbon financing, it is stated that climate benefits can only be claimed by tracking carbon flows across whole life cycles and over time since climate effects depend on the specific production setup, product choice and the fate of the product on the market (Hasselström and Thomas 2022). It is also suggested that financing macroalgal-based CDR projects

should be directed only to setups that lead to additional and permanent carbon storage.

## Environmental impacts and life cycle assessments

If adequately managed, seaweed cultivation can provide critical ecosystem services while contributing to developing marine resources currently underexploited in the Western world. However, there is a lack of knowledge on balancing the potential environmental risks associated with seaweed farming with the benefits to ensure the carrying capacity of the receiving environments, especially when considering expanding the industry. A recent review on this topic addressed several ecosystem changes that may be associated with a developing seaweed aquaculture industry (Campbell et al. 2019). Absorption of light, nutrients, carbon and kinetic energy, addition of artificial material and noise, release of dissolved and particulate matter, habitat for diseases, parasites and non-native species, release of reproductive material and artificial habitat creation are described as the key drivers of environmental changes, assuming standard practice and siting. The facilitation of disease, alteration of population genetics and broader alterations to the local physiochemical environment were identified as the environmental changes of greatest concern (Campbell et al. 2019). A study from the Swedish west coast found that aquaculture of *S. latissima* had limited environmental effects on the coastal environment, especially compared to other forms of aquaculture, such as fish and bivalve farming (Visch et al. 2020a). No changes were observed in benthic oxygen flux, dissolved nutrient concentrations, and benthic mobile fauna between farm and control sites; however, the farmed crop may provide habitat to mobile faunal species (Visch et al. 2020a). A *S. latissima* farm in Central Norway holds lower taxa abundance and richness and lower biodiversity than the wild kelp forests studied, but the farmed kelp hosted many associated species with communities different from what was found in the water column. The kelp farm can, thus, before harvest, serve as a "hanging garden" and attract pelagic fish (Bekkby et al. 2023). Another study, using a holistic qualitative assessment of ecosystem services, suggests that supporting, regulating, and provisioning services are mainly positively or non-affected by *S. latissima* cultivation, while some of the cultural services (recreation and aesthetic values) are likely negatively affected (Hasselström et al. 2018). The same study concluded that since many of the negative impacts on ecosystem services are local and many of the positive impacts are regional or even global, decision-makers should particularly consider the distribution of benefits and costs when framing policies for this sector in Europe and elsewhere. It is poorly understood how

seaweed farms affect the local hydrodynamic environment, especially turbulence, which is essential for nutrient transport and availability. Using results from a controlled flume experiment with mimic seaweed thalli, it was concluded that expanding seaweed culture brings a dual-risk of seabed erosion and low nutrient diffusion (Zhu et al. 2021c). *Saccharina latissima* farms may, though, serve as a form of nature-based coastal protection and have the potential to attenuate waves if numerous long lines of densely grown kelp are installed perpendicular to the direction of wave propagation (Zhu et al. 2021b).

A recent study investigated benthic degradation of kelp detritus in a defaunated mesocosm. Kelp fragments were deposited on the sediment surface (oxic degradation) or just below the oxic surface sediment layer (anoxic degradation). The results showed a high initial O<sub>2</sub> consumption followed by an exponential decrease in O<sub>2</sub> uptake over time and a linear increase in degradation rates with the amount of kelp added for both methods (Boldreel et al. 2023). This study underscores the importance of further investigating microbial degradation dynamics and its key variables for *in situ* conditions for assessing the environmental implications of seaweed farming.

Life cycle assessments (LCA) have been performed to evaluate the overall environmental sustainability of *S. latissima* cultivation and supply chains to support emerging seaweed farming activities along the European Atlantic coast. In a comparative environmental LCA of nursery, cultivation, and biomass preservation (hang-drying outdoors, heated air-cabinet drying, ensiling, and freezing) of *S. latissima* at a pilot farm in Sweden, more carbon was found to be captured by photosynthesis during growth than was emitted by the cultivation and preservation of kelp (Thomas et al. 2021). The energy-intensive preservation methods (freezing and air-cabinet drying) and the cultivation infrastructure were found to have the largest share of emissions in the supply chain. Despite the small scale of European seaweed aquaculture, *S. latissima* production is relatively resource-efficient compared to microalgae and some terrestrial plants (such as sugar beets, maize, and potatoes), according to a study from France and Ireland (Taelman et al. 2015). There is also great potential to reduce the footprint of seaweed cultivation when less transport and electricity are used and biomass productivity increases. As energy is expected to be increasingly generated by renewable sources, it is anticipated that the footprint of seaweed production will be even smaller in the future (Taelman et al. 2015). Electricity and manpower have also been identified as the primary hotspot system input for carbon footprint and financial cost in a Danish study, and a suggestion for significant reductions in electricity-related carbon footprints can be to apply sharing economy principle for the hatchery and adopting a greener electricity mix (Zhang et al. 2022). An LCA has also been performed to

calculate the environmental performance and evaluate possible improvements of the entire value chain from the production of *S. latissima* seedlings to extracted protein (Koesling et al. 2021). The current production of *S. latissima* protein was found to have a global warming potential that is four times higher than that of soy protein from Brazil. To produce a seaweed protein with a lower environmental impact than soy protein, the dry matter content in *S. latissima* biomass used for extraction must be 20%, and the protein content between 19.2% and 24.3% of the dry matter in the two best scenarios modelled. The source of drying energy is also a significant variable to consider for improving the environmental impact of seaweed protein production (Koesling et al. 2021). In another study assessing the feasibility of an integrated biorefinery approach to valorise *S. latissima*, LCA of the supercritical CO<sub>2</sub> extraction of fucoxanthin shows that the drying process of the kelp biomass and the energy used to compress the CO<sub>2</sub> are the elements with the highest ecological impact in this process, suggesting routes for reducing the environmental footprint (McElroy et al. 2023). Similar results are identified performing an LCA of a seaweed-based biorefinery concept with *S. latissima* to produce food, materials and energy where they found that the biorefinery has the potential to be sustainable. However, several improvements are necessary before it is competitive with land-based systems (Nilsson et al. 2022). For *S. latissima* cultivation, fuel use and drying of kelp biomass were the main environmental hot spots, and for the alginate extraction process, the yield and purification after extraction were the most critical steps (Nilsson et al. 2022). The environmental impacts of the production of a bioplastic film at an experimental pilot scale have been assessed using LCA. The results show that the main hotspot is film fabrication, the last step in the production, mainly due to the glycerol used in this process (Ayala et al. 2023). Looking further into the environmental impact and nutritional value of food products, an LCA analysis concludes that including *S. latissima* in future vegetarian burgers or as salt replacement can positively affect the environmental impacts of these food products (Slegers et al. 2021). The environmental impact can be reduced by increasing yields, materials' lifespan, and transport efficiency. In particular, the study points towards one hotspot in cultivating seaweeds, which is the transport vessel that contributes significantly to the global warming potential (Slegers et al. 2021).

### Bioremediation and Integrated Multi-Trophic Aquaculture (IMTA)

Cultivation of *S. latissima* may serve as a biomitigation measure, extracting nutrients and critical elements from coastal systems. Macroalgae have been described as having

a high potential for biosorption of many heavy metals (Zeraatkar et al. 2016), the order Laminariales being one of the most influential groups (Davis et al. 2003). Their abundance of cell wall matrix polysaccharides and extracellular polymers allow for a natural ion-exchange (Davis et al. 2003). The potential of bioremediation of heavy metals holds both advantages and disadvantages for farming *S. latissima*, and it might offer a cheap and efficient method to remove heavy metals from the surrounding waters, cleaning the ocean without negative ecological impacts (Zeraatkar et al. 2016).

*S. latissima* has the ability to remove excessive nutrients from eutrophic waters and/or reduce nutrient input into the ecosystem by fish farming in an Integrated Multi-Trophic Aquaculture (IMTA) system, where extractive species from lower trophic levels are co-cultured to utilise waste nutrients from fed species (Troell et al. 2009; Broch et al. 2013; Reid et al. 2013; Wang et al. 2014; Umanzor and Stephens 2023). Enhanced growth and yields of *S. latissima* are found when grown adjacent to salmon farm cages compared to control locations (Sanderson et al. 2012; Handå et al. 2013; Marinho et al. 2015c; Fossberg et al. 2018) confirming that this cultivation strategy can be a part of the future solution for both effective biomass production and co-use of limited coastal space. It is also found that cultivating *S. latissima* in nutrient enrichment mimicking IMTA settings will increase the biomass quality with potentially higher market value (Rugiu et al. 2021). The nitrogen content of *S. latissima* biomass grown close to the fish cages is also greater than those grown at reference sites away from the cages, indicating a higher protein content (Sanderson et al. 2012; Fossberg et al. 2018). The results from a hydrodynamic-ecological model suggest that one hectare of cultivated *S. latissima* in the vicinity of a fish farm (producing 5000 t salmon in a production cycle) can potentially remove about 0.36 t ammonium (NH<sub>4</sub><sup>+</sup>) with a cultivation period from August to June, or 0.15 t NH<sub>4</sub><sup>+</sup> with a cultivation period from February to June (Broch et al. 2013). Another IMTA model with *S. latissima* and salmon estimated that a 25 ha kelp farm could take up 1.6 t of the 13.5 t of dissolved inorganic nitrogen released from the salmon between February-June (Fossberg et al. 2018). An area of approximately 220 ha would be needed to cultivate enough *S. latissima* to fix an equivalent of the nitrogen released by the fish and achieve an even mass balance (Fossberg et al. 2018). Estimations from a cultivation experiment with a monoculture of *S. latissima* in the Western Gulf of Maine, USA, found that harvesting a hypothetical hectare of *S. latissima* after 6-7 months of cultivation would have the potential to remove 0.02-0.2 t N ha<sup>-1</sup>, depending on the density of long-lines (Grebe et al. 2021a).

Promising results have also been seen when cultivating *S. latissima* with other species than salmon, e.g., mussels and oysters (Jiang et al. 2022b; Lavaud et al. 2023). Compared to natural populations, *S. latissima* from mussel-integrated

culture systems was found to have almost twice as much protein content, giving greater added value to the species, both as potential food and feed (Freitas et al. 2016). A study also showed that bivalves can benefit from co-cultivation, where *S. latissima* serves as a biogenic buffer against present and future ocean acidification, and *S. latissima* can benefit from the increased CO<sub>2</sub> (Young et al. 2022). By co-cultivating *S. latissima* in tank systems with bivalves, a significant reduction of fouling epiphytes on seaweed fronds of around 50% by bivalve filtration was observed, and a significant elevation of NH<sub>4</sub><sup>+</sup> and phosphate (PO<sub>4</sub><sup>3-</sup>) by bivalves and alterations in kelp tissue quality were also detected (Hargrave et al. 2022).

Public acceptance of IMTA is a challenge, given the present management approach of aquaculture companies and the regulatory environment in most of the Western world. An assessment of the financial performance of a salmon monoculture versus an IMTA operation with salmon, blue mussel, and *S. latissima* in Canada using a discounted cash-flow analysis showed that IMTA operation was more profitable, even when no price premium (when consumers are willing to pay more to purchase a product which is manufactured using environmentally sustainable practices) was included for its products (salmon and/or mussel) (Carras et al. 2020). However, multiple challenges related to the financial and environmental performance of IMTA and the increased operational complexity remain to be solved. The positive effects of IMTA are well documented, but the knowledge concerning economics related to these operations is still more or less in its infancy (Knowler et al. 2020).

## Chemical composition of *Saccharina latissima*

*Saccharina latissima* is rich in carbohydrates (namely laminarin, alginate, cellulose, fucoidan, and the sugar alcohol mannitol) and ash, where sodium, potassium, calcium, magnesium, chlorine, bromine, iodine, phosphorus and sulphur are the most prevalent elements (Kreissig et al. 2021). *S. latissima* is also a source of protein and contains all essential amino acids (EAAs) and non-essential amino acids (NEAAs) (Sharma et al. 2018) and additionally contains a low concentration of lipids (Marinho et al. 2015a). The chemical composition of *S. latissima* varies significantly due to abiotic factors, such as temperature, salinity, nutrients, irradiance, currents, depth, season and latitude. To a certain degree, the choice of cultivation site, deployment, and harvest time can be used to tailor the chemical composition for targeting commercially attractive components (Schiener et al. 2015; Marinho et al. 2015b; Sharma et al. 2018).

Numerous studies have described the chemical composition of *S. latissima*, and how this varies with cultivation period and location, as shown for amino acids and proteins

(Marinho et al. 2015b; Bruhn et al. 2016; Mols-Mortensen et al. 2017; Sharma et al. 2018; Bak et al. 2019; Forbord et al. 2020a, b; Monteiro et al. 2021), carbohydrates (Vilg et al. 2015; Manns et al. 2017; Bruhn et al. 2017; Sharma et al. 2018; Samarasinghe et al. 2021b; Konstantin et al. 2023), lipids (Marinho et al. 2015a; Vilg et al. 2015; Barbosa et al. 2020; Monteiro et al. 2021; Samarasinghe et al. 2021b), micro elements including iodine and other minerals, pigments, sterols, vitamins and antioxidants (Lüning and Mortensen 2015; Schiener et al. 2015; Bruhn et al. 2016; Fernandes et al. 2016; Roleda et al. 2018; Marinho et al. 2019; De Jong et al. 2021; Kreissig et al. 2021; Wang et al. 2022), but also for toxic elements like arsenic, cadmium, lead, and mercury (Bruhn et al. 2016; Nielsen et al. 2016b; Pétursdóttir et al. 2019; Roleda et al. 2019; Blikra et al. 2021; Kreissig et al. 2021; Samarasinghe et al. 2021b). Table 1 shows the seasonal variation of ash, iodine, arsenic, cadmium, mannitol, uronic acid, fucose, glucose, protein, total amino acids, total lipids, total phenolic content and selected pigments on dry matter (DM) basis for *S. latissima*, listed as a value range from the 19 studies reviewed. For additional information on the chemical composition of *S. latissima*, read sections "[Saccharina latissima as a target species in seaweed farming](#)" and "[Cultivation strategies - Sea cultivation](#)" in the review by Diehl et al. (2023).

## Biochemical extractions and methods

Several chemical components can be extracted from *S. latissima* and used for various applications, including human and animal nutrition, biomedical applications, biomaterials, fuel, and fertiliser. Due to the high content of carbohydrates, extraction of commercially valuable polysaccharides has been widely studied, but extraction of other valuable components, including protein, lipids, pigments and phenolic components, was also investigated.

### Carbohydrates/Polysaccharides

*Saccharina latissima* contains several polysaccharides of commercial interest, some of which are water-soluble (fucoidan, laminarin and mannitol (sugar alcohol)), and others are insoluble (alginate and cellulose). One of the most commercially relevant polysaccharides is alginate. Alginate production in Europe is primarily based on wild-harvested brown kelp, mainly *Laminaria hyperborea* and *L. digitata*. With a growing global demand for hydrocolloids and the development of new alginate-based applications, cultivated *S. latissima* can be an important future source of alginates (Nøklung-Eide et al. 2023a). Here, the sequential extraction of additional high-value products will be an important driver

**Table 1** Seasonal variation of selected components in *Saccharina latissima*. DM = dry matter

Component	Value	Harvest month	Source (W=wild, C=cultivated), Country, Reference
Ash (g kg <sup>-1</sup> DM)	315-402	January	C Denmark (Marinho et al. 2015b); C Faroe Islands (Bak et al. 2019)
	274-444	May	C Norway (Sharma et al. 2018); C Faroe Islands (Bak et al. 2019)
	170-291	June	W Russia (Konstantin et al. 2023); C Norway (Sharma et al. 2018)
	130-199	July	W Russia (Konstantin et al. 2023); C Denmark (Marinho et al. 2015b)
	120-389	August	W Russia (Konstantin et al. 2023); C Norway (Sharma et al. 2018)
Iodine (I; mg kg <sup>-1</sup> DM)	3985	March	W Scotland (Schiener et al. 2015)
	2067-3600	May	C Denmark (Samarasinghe et al. 2021b); W Scotland (Schiener et al. 2015); C Norway (Sharma et al. 2018)
	1655-7933	June	C Norway (Lüning and Mortensen 2015); C Norway (Sharma et al. 2018); C Norway (Wang et al. 2022)
	3499	July	W Scotland (Schiener et al. 2015)
	1600-2000	August	C Norway (Sharma et al. 2018)
Arsenic (As; mg kg <sup>-1</sup> DM)	64	March	W Scotland (Schiener et al. 2015)
	22	April	C Denmark (Bruhn et al. 2016)
	43-73	May	C Denmark (Samarasinghe et al. 2021b); C Norway (Sharma et al. 2018); W Scotland (Schiener et al. 2015)
	32-76	June	C Norway (Sharma et al. 2018); C Norway (Wang et al. 2022)
	88	July	W Scotland (Schiener et al. 2015)
	23-30	August	C Norway (Sharma et al. 2018)
Cadmium (Cd; mg kg <sup>-1</sup> DM)	1.2	April	C Denmark (Bruhn et al. 2016)
	0.8-0.9	May	C Denmark (Samarasinghe et al. 2021b); C Norway (Sharma et al. 2018)
	0.6-2.2	June	C Norway (Sharma et al. 2018); C Norway (Wang et al. 2022)
	1.7-2.0	August	C Norway (Sharma et al. 2018)
Mannitol (g kg <sup>-1</sup> DM)	120-128	May	C+W Denmark (Manns et al. 2017); C Norway (Sharma et al. 2018)
	89-128	June	W Sweden (Vilg et al. 2015); W Russia (Konstantin et al. 2023); C Norway (Sharma et al. 2018)
	40-175	July	W Russia (Konstantin et al. 2023); C+W Denmark (Manns et al. 2017)
	45-130	August	C Norway (Sharma et al. 2018); W Sweden (Vilg et al. 2015); W Russia (Konstantin et al. 2023)
Uronic acids* (g kg <sup>-1</sup> DM)	130-290	May	C+W Denmark (Manns et al. 2017); C Norway (Sharma et al. 2018)
	138-340	June	C Norway (Sharma et al. 2018); C+W Denmark (Manns et al. 2017); W Russia (Konstantin et al. 2023)
	340-350	July	W Russia (Konstantin et al. 2023)
	64-370	August	C Norway (Sharma et al. 2018); W Russia (Konstantin et al. 2023)
Fucose (g kg <sup>-1</sup> DM)	7-27	May	C Denmark (Samarasinghe et al. 2021b); C Norway (Sharma et al. 2018)
	15-25	June	W Sweden (Vilg et al. 2015); C Norway (Sharma et al. 2018)
	5-14	August	W Sweden (Vilg et al. 2015); C Norway (Sharma et al. 2018)
Glucose (g kg <sup>-1</sup> DM)	60-131	May	C+W Denmark (Manns et al. 2017); C Norway (Sharma et al. 2018)
	77-143	June	W Sweden (Vilg et al. 2015); C Norway (Sharma et al. 2018)
	60-130	July	C+W Denmark (Manns et al. 2017)
	52-93	August	C Norway (Sharma et al. 2018); W Sweden (Vilg et al. 2015)
Protein (g kg <sup>-1</sup> DM)	59-165	April	C Faroe Islands (Bak et al. 2019); C Norway (Monteiro et al. 2021); C Faroe Islands (Mols-Mortensen et al. 2017); C Denmark (Bruhn et al. 2016)
	13-73	May	C Denmark (Marinho et al. 2015b); C Norway (Forbord et al. 2020b)
	29-89	June	C Faroe Islands (Bak et al. 2019); W Sweden (Vilg et al. 2015); C Norway (Forbord et al. 2020b); C Norway (Monteiro et al. 2021)
	13-40	July	C Denmark (Marinho et al. 2015b); C Faroe Islands (Mols-Mortensen et al. 2017)
	97	August	W Sweden (Vilg et al. 2015)
Total amino acids (g kg <sup>-1</sup> DM)	155	April	C Faroe Islands (Mols-Mortensen et al. 2017)
	15-144	May	C Denmark (Marinho et al. 2015b); C Faroe Islands (Mols-Mortensen et al. 2017); C Norway (Sharma et al. 2018)

Table 1 (continued)

Component	Value	Harvest month	Source (W=wild, C=cultivated), Country, Reference
Total lipids (g kg <sup>-1</sup> DM)	59-121	June	C Faroe Islands (Mols-Mortensen et al. 2017); C Norway (Sharma et al. 2018)
	20-88	July	C Denmark (Marinho et al. 2015b); C Faroe Islands (Mols-Mortensen et al. 2017)
	218	August	C Norway (Sharma et al. 2018)
	13	April	C Norway (Monteiro et al. 2021)
	2-7	May	C Portugal (Barbosa et al. 2020); C Denmark (Samarasinghe et al. 2021b)
	3-8	June	W Sweden (Vilg et al. 2015); C Norway (Monteiro et al. 2021)
Total phenolic content (g kg <sup>-1</sup> DM)	8	July	C Denmark (Marinho et al. 2015a)
	2	August	W Sweden (Vilg et al. 2015)
	2	March	W Scotland (Schiener et al. 2015)
	1-5	May	C Norway (Sharma et al. 2018); W Scotland (Schiener et al. 2015)
	1-10	June	C Norway (Sharma et al. 2018); W Sweden (Vilg et al. 2015)
	7	July	W Scotland (Schiener et al. 2015)
Chlorophyll <i>a</i> (g kg <sup>-1</sup> DM)	1-6	August	C Norway (Sharma et al. 2018); W Denmark (D'Este et al. 2017); W Sweden (Vilg et al. 2015)
	1-2	April	C Denmark (Bruhn et al. 2016)
	0.3	May	C Denmark (Marinho et al. 2019)
	0.3	June	W Sweden (Vilg et al. 2015)
Fucoxanthin (g kg <sup>-1</sup> DM)	0.3	August	W Sweden (Vilg et al. 2015)
	0.6-1.1	April	C Denmark (Bruhn et al. 2016)
	0.4	May	C Denmark (Marinho et al. 2019)
$\beta$ -Carotene (g kg <sup>-1</sup> DM)	0.03	July	C Portugal (Fernandes et al. 2016)
	0.01-0.03	April	C Denmark (Bruhn et al. 2016)
	0,009	May	C Denmark (Marinho et al. 2019)

\*Includes data on both total uronic acids and total alginate

to ensure an economically and environmentally feasible value chain, coupled with the development of markets for these added-value products (Birgersson et al. 2023). Depending on the target products, *S. latissima* can be pre-treated by different physical and chemical methods to enhance the yields and quality of extracted products. Formaldehyde or non-polar organic solvents are commonly used to remove phlorotannins, pigments and lipids (Bilan et al. 2010). The biomass can also be pre-treated with warm water to reduce the content of minerals and other soluble compounds prior to extraction of water-insoluble compounds or deionised water for increased solubility of proteins through an osmotic shock (Schiener et al. 2017). Of note, preservation and storage conditions for the biomass can have significant impacts on the yields and quality of extracted products, e.g., by chemical and enzymatic depolymerisation of biopolymers (Albers et al. 2021; Nøklung-Eide et al. 2023b).

Extraction of alginate from *S. latissima* follows the conventional approach of pre-treating with dilute acid to convert alginate to its acid form and remove cross-linking calcium ions, followed by an alkali treatment to solubilise alginate and allow separation from the residual biomass. Alginate from *S. latissima* has been shown to have a guluronic acid fraction

( $F_G$ ) of 0.45-0.51 (Haug 1964; Nøklung-Eide et al. 2023a) and molecular weight average ( $M_w$ ) above 600 kDa, depending on the extraction conditions (Nøklung-Eide et al. 2023b). One study evaluating the effects of different extraction conditions showed that high yields of alginate are obtained from *S. latissima* under mild conditions and short extraction times, but also that the yield was improved by increasing the pH from 8 to 9 during alkaline extraction (Nøklung-Eide et al. 2023b). Sodium carbonate ( $\text{Na}_2\text{CO}_3$ ) and sodium bicarbonate ( $\text{NaHCO}_3$ ) are conventionally used for alkaline extraction of alginate, whereas other calcium-chelating salts such as sodium citrate have been explored towards achieving a high yield and molecular weight of alginates under less alkaline conditions (Sterner and Edlund 2016).

Residual material after alginate extraction is enriched in cellulose, which can be extracted using strong alkali such as sodium/potassium hydroxide at high temperatures and a bleaching treatment with hydrogen peroxide or sodium chlorite. A few studies have characterised cellulose structure from *S. latissima* and shown variations in crystallinity and allomorph distribution (cellulose I $\alpha$  and I $\beta$ ), presumably due to different extraction conditions. A cellulose yield of 15-17% of the residues' DW in fresh and acid-preserved

*S. latissima*, where the crystallinity index (CI) was determined at 51% with an I $\alpha$  content of 64% based on x-ray diffraction (XRD) and Fourier-transform infrared (FTIR) analysis, respectively, was obtained in one study (Nøklung-Eide et al. 2023b). Similar CI values were found in another study, whereas their extracted cellulose was mainly in the I $\beta$  form (Bogolitsyn et al. 2022a). In another study, a yield of 26% cellulose was obtained due to a more extensive alginate extraction from the residues and a significantly higher crystallinity index of 91% (Cebrián-Lloret et al. 2022).

Fucoidans, laminarin and mannitol, can be retrieved from aqueous extracts of *S. latissima*. The yield of fucoidan has been shown to improve with increasing temperature and decreasing pH (Hahn et al. 2012), whereas excessively harsh extraction conditions (very high temperature and very low pH) can depolymerise fucoidan and compromise the quality of subsequently extracted products, such as alginates. Here, ranges of 50–70°C and pH 3.5–5.5 have been proposed to ensure high fucoidan yields while maintaining a high molecular weight of both fucoidan and alginate (Birgersson et al. 2023). Enzymatic-assisted extraction by adding cellulase and alginate lyase has been shown to avoid successfully depolymerisation and obtain pure fucoidans without the need for further purification steps (Nguyen et al. 2020; Rhein-Knudsen et al. 2023). Depending on the harvest location, laminarins can be co-extracted with fucoidans from biomass harvested in late spring/early summer. Separation of laminarin from fucoidan and subsequent fractionation/concentration based on molecular size can be done through cross-flow filtration or charge through ion-exchange chromatography (Sterner and Gröndahl 2021). Laminarins can be precipitated from a solution using >60% ethanol or acetone, leaving mannitol in the supernatant (Sterner and Edlund 2016).

## Proteins

Generally, brown algae contain lower concentrations of protein than red and green algae, but when cultivated at a large scale, *S. latissima* can still be a significant future source of protein for food and feed (Aasen et al. 2022), and a crude protein content up to 17% on dry matter (DM) basis has been reported (Bruhn et al. 2016). Various traditional methods for protein determination exist: the Kjeldahl method (nitrogen determination and multiplying the nitrogen content with a convention factor of 6.25 to calculate the protein), the Lowry method (colourimetric assay), the Bradford method (colourimetric assay) (indirect method), and direct analyses of total amino acids (Mæhre et al. 2018). A review of 236 studies of protein extraction from red, green, and brown algae (including 40 measurements on *Laminaria/Saccharina*) showed that direct protein determination was used in 42% of the studies and the Kjeldahl method in 52% of all studies (Angell et al. 2016). The commonly used

conversion factor of 6.25 originates from a presumption that protein contains 16% nitrogen, which is typical in animal protein. However, algae additionally have nitrogen bound in components like pigments, nucleic acids, free amino acids, and inorganic nitrogen compounds (Jones 1931; Mariotti et al. 2008), which leads to an overestimation of the protein content when the Kjeldahl method is used (Mæhre et al. 2018). Based on these studies, the conversion factor has more recently been proposed to be around 5 for brown algae in general (Mariotti et al. 2008; Angell et al. 2016) and around 4 for *S. latissima* (Forbord et al. 2020a). However, direct analysis of the total amount of amino acids is the most accurate method for calculating protein content in *S. latissima* (Bak et al. 2019).

Recent studies have evaluated new methods for rapid and accurate determination of protein content in *S. latissima*. Near-infrared and Fourier transform infrared spectroscopy are efficient and accurate alternatives to the traditional methods for determining the protein content in *S. latissima* (Niemi et al. 2023). The pH-shift method has been demonstrated as an efficient way of extracting protein from *S. latissima* (Harrysson et al. 2018). The protein extraction yield has been shown to increase with increasing pH (up to pH 12) and by applying an osmotic shock with fresh water, where increasing the volume of water relative to biomass resulted in increased protein yields per dry-weight seaweed (Vilg et al. 2015). Applying polysaccharide-degrading enzymes has also increased the yield of extracted proteins (Aasen et al. 2022). The chosen method for stabilising *S. latissima* also affects the extraction yield, where one study observed significantly higher protein yield from freeze-dried, oven-dried and -20°C frozen *S. latissima* than from sun-dried, -80°C frozen and ensiled raw material (Abdollahi et al. 2019). It has also been studied how blanching of *S. latissima* before pH-shift protein extraction affects the yield, where blanching at 45°C did not compromise total protein yield (Trigo et al. 2023). Cultivation of *S. latissima* and three species of green algae in process water from various food production was studied to see if cultivation in nutrient-rich water would potentially increase the protein content of the seaweed. For the green algae, more than a 60% increase in growth rate and protein content up to four times the amount of the seawater control was demonstrated. *S. latissima* had a negative growth rate in all processing waters; therefore, this is not a successful method for protein enrichment of *S. latissima* (Stedt et al. 2022).

## Lipids

*Saccharina latissima* contains low tissue concentrations of lipids, ranging from 0.62% to 3.90% of the dry matter (DM), depending on harvest time and location (Marinho et al. 2015a; Vilg et al. 2015; Foseid et al. 2020; Monteiro et al. 2021). However, the lipid fraction has a high ratio

of polyunsaturated fatty acids (PUFAs) and essential fatty acids (18:2n-6, 18:3n-3, 20:4n-6, and 20:5n-3), which potentially confers health benefits in nutritional applications despite the low quantity (Monteiro et al. 2020; Afonso et al. 2021). Lipid extraction from *S. latissima* is commonly performed by the traditional Bligh and Dyer method, mixing the biomass in an aqueous methanol and chloroform solution (Marinho et al. 2015a; Monteiro et al. 2020). However, an alternative extraction method initially developed for microalgae (Cavonius et al. 2014), using transesterification with potassium hydroxide (KOH), is an efficient alternative for fatty acids extraction from *S. latissima* (Vilg et al. 2015). Analysis of lipid extracts from *S. latissima* by Hydrophilic Interaction Liquid Chromatography-Mass Spectrometry (HILIC-LC-MS) identified 197 molecular species of polar lipids: 57 glycolipids, 120 phospholipids, 12 arsenolipids and eight betaine lipids (Rey et al. 2019).

### Pigments and phenolic compounds

Pigments and phenolic compounds, including phlorotannins, are conventionally extracted from brown algae using a variety of combinations of solvents. One study found the optimal conditions (pH, temperature, time) for fucoxanthin extraction from *Fucus vesiculosus* with acetone, and the same protocol was used on other brown seaweeds, including *S. latissima*. For *S. latissima*, the extracts from fronds, holdfast and stipes were analysed separately, showing fucoxanthin concentrations of approximately 500, 150 and 150  $\mu\text{g g}^{-1}$  of the dry matter (DM), respectively (Shannon and Abu-Ghannam 2017).

The seasonal changes in antioxidant components in *S. latissima* have been studied by extracting pigments using methanol with butylated hydroxytoluene in a sonication bath, followed by separation with High-Performance Liquid Chromatography (HPLC). A seasonal variation of the most prevalent pigments was found, with extraction yields of 222 to 665  $\mu\text{g g}^{-1}$  and 170 to 655  $\mu\text{g g}^{-1}$  of the DM of fucoxanthin and chlorophyll *a*, respectively (Marinho et al. 2019). Another study showed that fucoxanthin and chlorophyll could be extracted and separated in a single step in an aqueous solution, resulting in high chlorophyll and fucoxanthin extraction yields (Martins et al. 2021). Seasonal changes in pigment content have further been correlated with nutrient accessibility for biomass (Boderskov et al. 2016). A pigment-rich fraction from *S. latissima* was obtained by extraction with supercritical  $\text{CO}_2$ . A two-level factorial design was applied and showed that the pigment yields were primarily dependent on pressure (and hence  $\text{CO}_2$  density) and not on temperature during extraction, and that total pigment yields were further improved (up to 0.4% of DM) using ethanol as a co-solvent (McElroy et al. 2023).

The phenolic content of *S. latissima* is 0.1-0.5% of DM (Zhang and Thomsen 2019), which is low compared with other species of brown algae such as *Ascophyllum nodosum* (Schiener et al. 2017), and thus few studies have focused on developing methodology for extraction of phenolic compounds specifically from *S. latissima*. The Folin-Ciocalteu (FC) assay is conventionally used to quantify total phenolic content (TPC) in extracts but is not specific for phlorotannins and requires complementary methods such as NMR, HPLC and mass spectrometry for more accurate quantification and characterization of phlorotannins in brown algae.

Polyphenols, or phlorotannins in brown algae, are conventionally obtained with a single liquid-solid extraction step using polar aprotic and protic solvents such as acetonitrile, acetone, ethanol and methanol in water (Schiener et al. 2015; Vilg et al. 2015; Sharma et al. 2018; Sardari et al. 2021). Extraction yields are positively correlated with the polarity of the solvent, as one study demonstrated higher phenolic content in methanol extracts compared with ethyl acetate (Marinho et al. 2019). *Saccharina latissima* extracts may give deceptively high TPC values from the FC assay due to a high co-extracted protein and mannitol content. One study applied a solid-phase extraction by HPLC on lyophilized ethanol extracts to address this, achieving a tenfold higher concentration of phlorotannins from *S. latissima* compared with ethanol alone (Sardari et al. 2021).

Phlorotannins have been proposed to exist in two forms, soluble and membrane-bound, depending on their location in the brown algal cells and which may have different structures and bioactivities. Soluble phlorotannins have been extracted using two-solvent methods with sequential application of methanol and chloroform or dichloromethane, followed by ethyl acetate. The solid algal residues were in the same study treated with alkali to extract membrane-bound phlorotannins (Liu et al. 2017).

### Applications of *Saccharina latissima* and derived compounds

*Saccharina latissima* contains several components of commercial value, including alginate, mannitol, laminarin, fucoidan, iodine, pigments, phenolics and lipids, which can be utilised for various industrial applications for food, feed, fertiliser, biofuels, cosmetics, pharmaceuticals, and nutraceuticals (Holdt and Kraan 2011; Stengel et al. 2011; Kraan 2013). Due to its nutritional composition, *S. latissima* is already used commercially in food applications and is a potential functional food ingredient (Neto et al. 2018; Rey et al. 2019). Many components show a diversity of bioactivities, which can potentially improve human health. *In vitro* and animal studies have, for example, reported antioxidant, antiviral, anticancer and anticoagulant effects of compounds



derived from *S. latissima* (Hafting et al. 2015; Afonso et al. 2021).

## Food and feed

*Saccharina latissima* can be used as an ingredient in human and animal nutrition, to add nutritional compounds and flavour, or as a texturising agent. *S. latissima* can also be a functional food ingredient, conferring antioxidants and immunomodulatory properties (Neto et al. 2018; Afonso et al. 2021). *S. latissima* is already used commercially in plant-based burgers and minces, pasta, pesto, spice - and salt mixes (Van Den Burg et al. 2021a; Mendes et al. 2022). Moreover, it has been shown that inclusion of cultivated seaweed in such products can have a positive environmental impact on diets (Stefaniak-Vidarsson et al. 2019; Slegers et al. 2021). A sensory study indicated that consumers rated *S. latissima* as the saltiest, sourest, and bitterest compared to *L. digitata* and *Alaria esculenta* (Chapman et al. 2015). *S. latissima* is commonly processed for food applications by freezing, blanching or drying. However, more research efforts recently focused on fermentation as an alternative processing method for cultivated kelps, both because it is a less energy-intensive processing method compared to freezing and drying and because it can change the sensorial properties and chemical composition (Chapman et al. 2015; Mouritsen 2017; Stévant et al. 2017a; Bruhn et al. 2019; Akomea-Frempong et al. 2021; Sørensen et al. 2021; Yen et al. 2022).

*Saccharina latissima* contains a high amount of iodine (I) compared to other seaweed species. The exact content varies greatly and has been reported in ranges from 2.8 to 6.6 g I kg<sup>-1</sup> DM (Stévant et al. 2017a; Nielsen et al. 2020; Afonso et al. 2021). *S. latissima* can be used as a plant-based iodine source, especially suited for vegetarian and vegan diets, which are often iodine deficient (Groufh-Jacobsen et al. 2020). However, the daily recommended intake (DRI) of iodine is 150 µg in Europe and USA. The upper intake level (UL) is 600 µg and 1100 µg in Europe and the US, respectively (Trumbo et al. 2001). The UL for I limits the amount of *S. latissima* used in food applications (Bouga and Combet 2015) to less than 1 g day<sup>-1</sup> (Afonso et al. 2021). In comparison, *A. esculenta*, another kelp species that is cultivated commercially and used for food applications in Europe (Mendes et al. 2022), contains 0.2 g I kg<sup>-1</sup> DM (Stévant et al. 2018b), which allows for higher inclusion levels in food products without exceeding UL for iodine.

The choice of post-harvest processing and stabilisation method will influence the biochemical composition of *S. latissima* and the quality and shelf-life (Standal et al. 2024). By soaking or blanching in warm water after harvest, the water-soluble iodine can be reduced by more than 80%

compared to freshly harvested *S. latissima*, which allows higher inclusion levels of *S. latissima* in food products (Stévant et al. 2017b; Nielsen et al. 2020). Furthermore, there are indications that blanching increases the consumer acceptance of *S. latissima* in food (Akomea-Frempong et al. 2021). However, the blanching treatment also reduced the content of other water-soluble components, including minerals, polyphenols, and fucoxanthin, and will therefore influence the total nutritional content and potentially functional properties of *S. latissima* (Stévant et al. 2017a). In order to limit the loss of nutrients and flavour, it is beneficial to blanch *S. latissima* in seawater instead of freshwater (Krook et al. 2023). Other preservation methods such as freezing, sun-drying, oven-drying and ensiling of *S. latissima* after harvest have also been shown to affect the composition of the seaweed significantly. Of these, oven-drying overnight at 40°C and freezing at -20°C were shown to have the smallest effect on the composition (Albers et al. 2021). The effects of drying have been investigated in more detail, where one study compared convective air-drying at 25, 40, and 70°C and freeze-drying of *S. latissima*. Here, it was found that freeze-drying resulted in significantly lower iodine contents compared to air-drying at all three temperatures, but the overall nutritional value, flavour and aroma were similar for all drying methods. The swelling capacity (the capability to absorb water) was lower for air-dried than freeze-dried samples, and a difference in mouthfeel was observed in the sensory evaluation (Stévant et al. 2018a). Another study compared the effects of sun drying, freeze drying, and heat pump-based drying systems at different air temperatures and relative levels of air humidity (30, 50, and 70°C and 25 and 50% humidity) on the physicochemical properties, phenolic activity, and antioxidant capacity of *S. latissima*. The results showed that all drying methods significantly decreased total phenolic and vitamin C content and antioxidant activity compared to fresh *S. latissima*. The best method for maintaining functional properties and nutritional components was drying at temperatures below 50°C and low humidity (Sappati et al. 2017, 2019). A recent study has examined the effect of high-pressure processing (HPP) of *S. latissima* on the chemical composition, colour, texture and microbial stability. HPP was efficient for retaining the nutritional content and colour, but significantly reduced the hardness and compression of *S. latissima*. Due to the low initial microbial load, the microbial stability and shelf life were difficult to assess (Jönsson et al. 2023). Instead of directly consuming *S. latissima* and derived components, *S. latissima* can also potentially be used to improve the shelf-life and taste of other foodstuff, as shown for Atlantic salmon fillet stored with wet *S. latissima* (Kirkholt et al. 2019).

The potential for kelps to be used as feed for farm animals has been evaluated (Makkar et al. 2016). Due to a low protein content (up to 17% protein DM<sup>-1</sup>, Bruhn et al. 2016)

compared to other widely used feed ingredients like soybean meal (48% protein DM<sup>-1</sup>) and fish meal (68.7% protein DM) (Angell et al. 2016), enrichment of the protein fraction and/or co-extraction with other high-value ingredients will presumably be required for commercially viable processing (Emblemsvåg et al. 2020; Aasen et al. 2022). *S. latissima* is a good source of microelements, including I, Cu, Fe, Mn, and Se. However, the high content of total As, which is reported in the range from 20 to 90 mg kg<sup>-1</sup> DM (Schiener et al. 2015; Bruhn et al. 2016; Kreissig et al. 2021), is potentially a limiting factor for the use of *S. latissima* in feed, which has a limit of 40 mg kg DW<sup>-1</sup> total As for "seaweed meal and feed materials derived from seaweed" (COMMISSION REGULATION (EU) 2019/1869 (EU 2019)). It should be noted that the vast majority (>99%) of As in *S. latissima* is organic, which is less of a health concern compared with inorganic As (Trumbo et al. 2001; Pétursdóttir et al. 2019; Blikra et al. 2021). Although high inclusion levels of whole *S. latissima* in animal feed might be problematic, it can still be an interesting functional feed ingredient that provides laminarin, fucoidan and essential fatty acids (Samarasinghe et al. 2021b).

By biorefining of *S. latissima* biomass, the nutritional values can be increased, thus making it more suitable as an animal feed supplement (Schiener et al. 2017). Bioactive components derived from *S. latissima*, such as laminarin and fucoidan, can be functional feed ingredients with potentially positive health effects in animal nutrition (Øverland et al. 2019). Another critical aspect of cultivated seaweed to become commercially viable as an animal feed ingredient is developing cost-efficient preservation methods (Yen et al. 2022), such as ensiling (Novoa-Garrido et al. 2020). One *in vitro* study showed that *S. latissima* could be mixed with other feed ingredients (including corn, wheat and soybean meal) into multinutrient blocks for feeding ruminants (Marcos et al. 2023).

Several animal feeding trials have studied the effect of including *S. latissima* (whole or extracts) in the diet of ruminants (Samarasinghe et al. 2021a; Grabež et al. 2022, 2023; Qin et al. 2023), monogastric animals (Gahan et al. 2009; McDonnell et al. 2010; Krogdahl et al. 2021; Fjære et al. 2022; Juul et al. 2022) and fish (Ferreira et al. 2020; Granby et al. 2020). In a feeding trial with Norwegian lambs, the effect of replacing 5% of the control diet with dry *S. latissima* during 35 days in the finishing diet was studied. A significant increase in iodine and arsenic was found in raw meat and dry-cured leg, as well as a significant selenium increase in raw meat. A sensory panel tasted the dry-cured leg to evaluate odour and taste, which showed no effect of including *S. latissima* on the sensory properties of the dry-cured leg (raw meat was not evaluated) (Grabež et al. 2022). In another study, rainbow trout were fed diets with 1, 2 and 4% dry *S. latissima*, with varying effects: 4% inclusion level

decreased the body weight, and 1 and 2% inclusion had no negative effect on the final weight of the trout. 2% inclusion led to a significant downregulation of an oxidative stress marker, which implies that *S. latissima* can mitigate oxidative stress. The lipid metabolism was altered, causing a decrease in fatty acids in the trout fillet without compromising the concentrations of EPA and DHA (Ferreira et al. 2020). The effect of including laminarin, fucoidan, or a mix of the two (extracted from *Laminaria* spp.) in the diet for weaning piglets was studied. The result showed that piglets fed diets with laminarin gained more weight and had reduced diarrhoea and faecal *Escherichia coli* populations compared to the control diet and diet with fucoidan, indicating that laminarin improved gut health in weaning piglets (McDonnell et al. 2010). A rat study showed low digestibility of protein from *S. latissima*; however, the rats were fed whole *S. latissima*, and the digestibility was presumed to improve by using protein-enriched *S. latissima* extracts, potentially in combination with other high-quality protein sources (Juul et al. 2022). Information about the bioavailability of protein from *S. latissima* is scarce, but a study of protein release in an *in vitro* digestion model showed a protein release of 52.7% after 120 min of duodenal digestion (Vasconcelos et al. 2023). A recent *in vitro* study examined the impact of several macroalgae on methane (CH<sub>4</sub>) production and rumen feed degradability in cattle. The study showed no effect on CH<sub>4</sub> production when feeding with 17% of *S. latissima* compared to basal feeds (grass/clover or corn silage). Negative effects on rumen feed degradability were also found, as tested macroalgae had low intrinsic rumen degradability compared to the basal feeds and adding them significantly reduced the degradability of basal feeds (Thorsteinsson et al. 2023).

## Food and feed safety

*Saccharina latissima* is accepted in the Novel Food Catalog (Regulation (EU) 2017/2470, (EU 2017)), meaning it is authorised for human consumption in the EU. The General Food Law (Regulation (EC) No 178/2002, (EU 2002a)) regulates the food safety of all EU food products, including seaweed products. Similarly, food safety in the United States is regulated by The U.S. Food and Drug Administration (FDA) (Kim et al. 2019). The FDA is giving any substance considered safe for human consumption the status GRAS = Generally Recognized As Safe. In Europe, the Commission Regulation (EC) No 1881/2006 (EU 2006) regulates maximum levels of heavy metals and other toxic substances in food, but no specific maximum levels exist for seaweed in food. One exception is France, which has recommended limit values for Cd, I and As in seaweed of 0.5, 2000 and 3 mg kg<sup>-1</sup> DM, respectively (Mabeau and Fleurence 1993;

Stévant et al. 2017a). Concentrations of As, Cd, Cr, Pb and Hg in *S. latissima* are reported in some studies as being above the maximum level for other foodstuffs (the maximum level for Cd is 0.2 and 1 mg kg<sup>-1</sup> of fresh weight for leafy vegetables and bivalve molluscs, respectively; Maulvault et al. 2015; Stévant et al. 2017a; Banach et al. 2020). When comparing the metal content (As, Cd, Cr, Hg, Pb) in *S. latissima* from 2012–2014 in Long Island Sound and New York, it was found that all metals except Pb were below most existing maximum levels (Kim et al. 2019). However, the study also described a strong temporal variation, suggesting that regular monitoring of heavy metal content of cultivated seaweeds is necessary. The temporal and spatial variation of heavy metal content for *S. latissima* were confirmed in Danish studies (Nielsen et al. 2016b; Boderskov et al. 2021); thereby, As and Cd concentrations exceeded the current regulations in some regions and sampling periods. High concentrations of As and Cd in *S. latissima* were also found in Danish, Icelandic and Norwegian regions, which might limit the commercial use of *S. latissima* (Nielsen et al. 2016b; Samarasinghe et al. 2021b; Yen et al. 2022). Nevertheless, high metal concentrations were shown to be reduced by treating cultivated *S. latissima* with high temperatures and fermenting them with lactic acid bacteria (Na: -15%; Cd: -35%, Hg: -37%; Bruhn et al. 2019).

The Commission Recommendation (EU) 2018/464 (EU 2018) recommended monitoring metals and iodine in seaweed, halophytes and products based on seaweed. Data was collected in 2018, 2019 and 2020, and it is expected that the EU Commission will evaluate options for risk management of heavy metals and iodine in seaweed food products within the next few years (Lähteenmäki-Uutela et al. 2021; Hogstad et al. 2023). Specific regulations for the use of macroalgae in food supplements exist, and the Commission Regulation (EC) No 1881/2006 (EU 2006) sets maximum levels for cadmium (3.0 mg kg<sup>-1</sup> DM) and mercury (0.1 mg kg<sup>-1</sup> DM) in food supplements with seaweed (Rahikainen et al. 2020). Feed safety is controlled by specific regulations, and various algae-based feed products are accepted for use in the EU, as listed in Commission Regulation (EU) No 68/2013 (EU 2013). Maximum levels of toxic components, including heavy metals, are listed in Directive 2002/32/EC (EU 2002b). Specific limits exist for As (40 mg kg<sup>-1</sup> DM and 2 mg kg<sup>-1</sup> DM for total and inorganic, respectively) in seaweed-based feed (Rahikainen et al. 2020).

There is a risk that the marine allergens from crustaceans, molluscs and fish can be transferred to *S. latissima* due to their co-existence, both in the wild and especially in Integrated Multi-Trophic Aquaculture (IMTA) systems, when *S. latissima* is grown near other species. In a recent study where *S. latissima* was farmed in three different Norwegian IMTA farms, the crustacean allergen tropomyosin was above the detection limit, corresponding to 0.2 mg kg<sup>-1</sup> DM per

sample at all three locations. Levels of up to 1 mg kg<sup>-1</sup> DM were detected; however, this is not considered a critical consumption level (Mildenberger et al. 2022).

Microbial safety is another essential aspect of *S. latissima* for human and animal consumption. The six pathogens *Listeria monocytogenes*, *Salmonella enterica*, *Staphylococcus aureus*, pathogenic *Escherichia coli*, *Vibrio vulnificus* and *Vibrio parahaemolyticus* were inoculated on freshly harvested *S. latissima* from Maine, USA, and the pathogen load was evaluated under three storage temperatures (4, 10 and 20°C) and two drying methods (air- and freeze drying). The results showed reduced pathogen load after storage for all conditions except for storage at 20°C (Vorse et al. 2023). The ability of extracts from dry *S. latissima* to inhibit the growth of *S. aureus* was also demonstrated in another study from Maine (Cusson et al. 2021). The microbial safety of fresh and heat-treated cultivated *S. latissima* from Norway was analysed, and all samples had low total plate counts (1 to 3 log colony-forming unit; cfu g<sup>-1</sup>), and none of the pathogenic bacteria examined (enterococci, coliforms, Vibrios and *L. monocytogenes*) were detected (Blikra et al. 2019). Another study on cultivated *S. latissima* from Scotland from two different harvest years (2019 and 2020) found that the microbial load varied significantly between the two seasons, which highlights the need for a better understanding of microbial safety of cultivated seaweed and its variation based on external environmental factors, genetic variation, and handling/storage post-harvest (Lytou et al. 2021).

## Biomedical compounds

Components from *S. latissima* show promise for utilisation in biomedical applications. For instance, its sulphated polysaccharides (fucoidans) have demonstrated a wide range of bioactivities, including anticancer, immune-stimulating, anti-inflammatory, antiviral, antithrombotic, anticoagulant, and antioxidant effects (Fitton 2011; Holdt and Kraan 2011; Wijesinghe and Jeon 2012; Ehrig and Alban 2014; Venkatesan et al. 2015; Gomez-Zavaglia et al. 2019). Other components with potential medical use are laminarin, alginate, mannitol, polyphenols and some pigments (Venkatesan et al. 2015; Stévant et al. 2017a; Zargarzadeh et al. 2020; Karuppusamy et al. 2022). Several studies compare the bioactivities of these components from various brown algae species, including *S. latissima* (Jiao et al. 2011; Wijesinghe and Jeon 2012; Brown et al. 2014; Ganesan et al. 2019; Gabbia and De Martin 2020; Bi et al. 2022; Karuppusamy et al. 2022), whereas the following studies focused solely on *S. latissima* and its derived components. *S. latissima* cultivated in France was screened for potential impact on obesity, diabetes, arterial pressure, and antioxidant content for use as a functional food ingredient. Water, ethanol, and acetone extracts were

prepared and evaluated for their ability to inhibit enzymes that affect blood sugar ( $\alpha$ -glucosidase), digestion (lipase), and blood pressure (angiotensin-converting enzyme (ACE)). The results showed modest ability to inhibit  $\alpha$ -glucosidase and lipase. A more promising result was seen on ACE inhibition, indicating a potential positive impact on blood pressure (Neto et al. 2018). Another study using cultivated *S. latissima* from the USA showed that inclusion of *S. latissima* in the diet of mice could potentially inhibit obesity by preventing obesity-associated metabolic disturbances and Non-alcoholic steatohepatitis (NASH) (Kim et al. 2021). A recent study looked at the effect of alginate, laminarin and two fractions of fucose-containing sulphated polysaccharides (FCSPs) extracted from *S. latissima* cultivated in Scotland on immunostimulatory and hypocholesterolemic activity in an *in vitro* model. One FCSP contained mainly uronic acid and fucose, and the other FCSP fucose and galactose. Both FCSPs had immunostimulatory effects on B lymphocytes. Only the FCSPs that contained uronic acid showed a significant hypocholesterolemic effect. No effect was observed from laminarin and alginate. This study supported the potential of fucoidans to be a health-promoting functional ingredient (Moreira et al. 2023). Another study compared FCSPs extracted from *S. latissima* (wild harvest from the Kiel Fjord, Baltic Sea and Faroe Islands, North Atlantic Ocean) to commercially available FCSPs from *F. vesiculosus*. The results demonstrated that FCSPs have anti-tumor, antimetastatic and antiangiogenic activity and may be used for tumour therapy. The results showed a stronger effect of FCSPs from *S. latissima* than *F. vesiculosus* (Schneider et al. 2015). Inhibition of the neutrophil elastase enzyme has been a proposed anti-cancer activity of fucoidan and similar sulphated polysaccharides. One study prepared fucoidan extracts from various sources of *S. latissima* with different compositions/structures and found that elastase inhibition and anticoagulating properties increased with the fucose content and sulfation degree of the polysaccharide extracts (Ehrig and Alban 2014). Fucoidans from *S. latissima* have also been demonstrated to inhibit inflammatory cytokine expression, complement activation, growth factor signalling, and oxidative damage associated with age-related macular degeneration (Dörschmann et al. 2019, 2023).

## Biomaterials

Polysaccharides extracted from *S. latissima* can be used in a variety of biomaterials. Notably, alginates form ionic cross-links in the presence of divalent ions, which can be exploited to form hydrogels, fibres, films and other composite materials. Cellulose fibers, including micro- and nanocrystalline and fibrillar derivatives, can have properties similar to other cellulose sources and, thus, a vast array of material applications (Birgersson et al. 2023).

Alginate fibers from *S. latissima* have been prepared through wet spinning, extruding highly concentrated alginate solutions into a calcium chloride bath followed by winding the fibers on a rotating drum and drying (Silva et al. 2023). Out of four evaluated brown algal species, the *S. latissima* alginate extract exhibited superior spinnability, forming 100–140  $\mu\text{m}$  fibers with better tensile properties compared with reference materials gum arabic, starch film, polyhydroxybutyrate, and carboxymethyl cellulose.

Minimally processed protein-cellulose complexes (PCC) have been generated from *S. latissima* by extracting lipid- and water-soluble compounds and alginate from the biomass before freeze-drying the residual materials to form PCCs. These porous materials demonstrate good adsorptive properties for potential applications in pharmacy and environmental remediation (Bogolitsyn et al. 2022a). In these studies, complexes from *S. latissima* showed a higher adsorption capacity for ionic dyes than similar materials derived from *L. digitata*, presumed due to a higher protein content and/or higher ratio of cellulose in phase I $\alpha$  in *S. latissima* (Bogolitsyn et al. 2022b). Composite films of *S. latissima* have been prepared by dissolving the dried algae in trifluoroacetic acid and blending with microcrystalline cellulose for use in biomaterials for wound healing. Here, it was found that films prepared with *S. latissima* were more ductile than films with cellulose alone, had more potent antioxidant activity than similar films prepared from red and green algae, and showed anti-inflammatory properties in fibroblast cell cultures (Guzman-Puyol et al. 2017).

After alginate extraction, residual fractions of *S. latissima* have been used to produce cellulosic films for potential use in food packaging applications. It was found that treatment of the residues with strong alkali resulted in a purer cellulose matrix and improved transparency and mechanical properties of the films compared with less refined fractions containing residual alginate, proteins, and other compounds. The less refined films did, however, exhibit lower water permeability due to interactions between the residual compounds (Cebrián-Lloret et al. 2022). It is economically advantageous to extract alginate and cellulose directly from fresh seaweed without energy- and cost-demanding pre-processing like freezing or drying. Stabilisation of fresh *S. latissima* with formic acid at low temperatures before extraction has been shown to preserve the alginate and cellulose quality for further use for biomaterials and other applications (Nøkling-Eide et al. 2023a).

## Biofuel, biochemicals and fertiliser

The storage carbohydrates laminarin and mannitol accumulate in *S. latissima* during spring and summer, constituting up to 15 and 25% of the DM, respectively (Black 1950;

Schiener et al. 2015; Manns et al. 2017). Laminarin and mannitol can be fermented for biofuel production, offering a sustainable alternative to fossil fuels (Adams et al. 2009; López-Contreras et al. 2014; D'Este et al. 2017; Lamb et al. 2018). The structural polysaccharides alginate and cellulose are fermentable with certain microbial strains and enzymatic hydrolysis, adding up to 65-70% carbohydrates of the DM. Preservation with sulphuric and formic acid has shown to be an efficient method for preserving mannitol and laminarin in *S. latissima*, intended for use as feedstock for biofuel production (Sandbakken et al. 2018). One recent study demonstrated the use of enzymatically hydrolysed *S. latissima* as a substrate for producing acetone, butanol, and ethanol (ABE), however, with low efficiency and long fermentation lag time. There is a need for further optimisation to make ABE production from cultivated *S. latissima* economically feasible (Schultze-Jena et al. 2022). One possibility is to improve the biofuel yield from *S. latissima* by using a cascading circular bioenergy system for the production of biochar, syngas and bio-oil through incorporated pyrolysis, which has been shown to increase the biomethane yield from *S. latissima* by 16% with optimal biochar addition (Deng et al. 2020). Another option is to ferment *S. latissima* together with other inexpensive feedstock. One recent study evaluated the co-fermentation of *S. latissima* hydrolysate together with candy-factory waste and digestate from a biogas plant by various lactic acid bacteria, resulting in a successful production of lactic acid (Papadopoulou et al. 2023). Another study showed that adding up to 50% of *S. latissima* under anaerobic digestion of municipal wastewater sludge optimised the digestion conditions (Ometto et al. 2018). Co-fermentation of *S. latissima* with wheat straw increased biogas yield (Vivekanand et al. 2012). Hydrothermal treatment of *S. latissima* before fermentation has proven to be an efficient method for producing biohydrogen and biomethane biogases (Vivekanand et al. 2012; Lin et al. 2019). Hydrothermal liquefaction (HTL) of *S. latissima* at high temperatures ( $585^{\circ}\text{C min}^{-1}$ ) also caused increased production of bio-oil (Bach et al. 2014).

Mannitol-rich extracts from *S. latissima* have also been shown to be a useful substrate for growing *Bacillus methanolicus* to produce valuable chemicals, like the amino acid derivative cadaverine (Hakvåg et al. 2020).

Wild-harvested seaweed has been used as a fertiliser in coastal areas for centuries due to its high mineral content and the ability to improve porosity, thereby increasing the water and air penetration of the soil (Craigie 2011). The potential of cultivated *S. latissima* to reduce eutrophication by circular nutritional management was studied in a comparative Life Cycle Assessment (LCA), comparing three seaweed biomass management scenarios, including using it as a fertiliser. Using *S. latissima* as a fertiliser showed the lowest environmental impact (Seghetta et al. 2016b). The use of *S. latissima* for fertiliser

production has better potential when produced together with other components (e.g., protein and bioethanol) in a biorefinery set-up (Seghetta et al. 2016a). A few trials evaluating the biostimulant properties of *S. latissima* extracts have shown varying effects, highlighting the need for more research on composition and effects of the extracts on a larger variety of agricultural products, but could be a promising application alongside well-established biostimulants from *A. nodosum* and other brown algae (Jensen and Jorgensen 2022; Top et al. 2023).

Another type of soil enrichment/treatment is biochar. Biochar is produced by converting biomass to a carbon-rich black material via several thermochemical methods, such as pyrolysis, hydrothermal carbonization, and torrefaction (Farghali et al. 2023). Due to their specific properties (Osman et al. 2022), biochar can be used in several fields like agronomy and animal farming, soil remediation and water treatment, energy storage, biogas production, or carbon sequestration (Sun et al. 2022; Farghali et al. 2023). Biochar can be produced from various commercially cultivated seaweeds (including *Saccharina* sp.; (Roberts et al. 2015)), and because the nutrients contained in macroalgae are preserved and concentrated in biochar (Farghali et al. 2023), it holds the potential to be a cost-effective fertiliser (Sun et al. 2022). Biochar produced from brown seaweed species has lower concentrations of potassium and sulphur and higher pH and carbon and hydrogen content than those produced from red seaweed species (Roberts et al. 2015). However, seaweed biochar is consistently different from biochar produced from lignocellulosic sources (Adams et al. 2020), having low carbon content but high concentrations of exchangeable nutrients (in particular N, P, K, Ca, and Mg; Roberts et al. 2015; Sun et al. 2022). Preliminary work/results with biochar/pellets from different macroalgae, including *S. latissima* sampled on mussel lines, show possible limitations of algal biochar (Adams et al. 2020), as high proportions of sodium are retained in the macroalgae char and may have a negative effect through increasing soil salinity (Adams et al. 2020). A few studies on biochar produced from *S. japonica* showed that it could be used for pollutant removal, like heavy metal (Poo et al. 2018) or industrial dye (Boakye et al. 2019; Sewu et al. 2021), with higher efficiency than conventional woody biochar or carbonaceous adsorbents. Creating biochar with unique mixes of seaweed and lignocellulosic sources could be a way to fertilise specific soil types in agronomy (Roberts et al. 2015).

### ***Saccharina latissima* as feedstock in biorefineries**

As described above, *S. latissima* can be used for multiple applications (food, feed, biomedical applications, biomaterials, fuel, fertiliser, etc.). However, it might be economically

favourable to extract various components from *S. latissima* and use them for different applications and markets. The feasibility of using *S. latissima* as feedstock for biorefineries has been studied extensively over the last decade (López-Contreras et al. 2014; Marinho et al. 2016; Schiener et al. 2016; Zhang and Thomsen 2019, 2021; Larsen et al. 2021; McElroy et al. 2023) and has shown potential for increasing the value of cultivated *S. latissima*. A biorefinery approach, in combination with a thorough understanding of the effect of seasonal variation of the composition, is a likely way forward for creating revenue from sustainably and economically cultivated *S. latissima* (Seghetta et al. 2016a; Zhang and Thomsen 2019; Adams et al. 2020; Chauton et al. 2021; Nilsson et al. 2022).

## Knowledge gaps and concluding remarks

Industrial cost-effective cultivation requires novel technology with a high degree of mechanisation and automation along the entire production chain comprising production in nursery, deployment, on-growth at sea, monitoring, harvesting and stabilisation/processing. To allow transition from "low-tech" (labour-intensive) to "high-tech" (cost-effective) cultivation, technology transfer from the successful marine and maritime industries to seaweed farming should be prioritised. In order to optimise biomass yields, more knowledge is required on the abiotic and biotic factors that control growth and biofouling on farmed *S. latissima*, and site selection is crucial. Standardisation of yield measurements in a seaweed farm is also beneficial to compare different farm locations and growth strategies. Developing cultivars for improved traits like high biomass production, increased content of valuable compounds and low affinity for biofouling could be of great importance for the future industry and are of current interest. For future cultivation measures, it would be beneficial to understand the genetic diversity and population structure of *S. latissima* in order to obtain information on optimal management and conservation and identify genetic resources. As farmers attempt to improve yields and to ensure that *S. latissima* farms withstand climate change, more research into using genetic tools will be necessary. Research into how priming (Scheschonk et al. 2023) can improve *S. latissima* resilience to stress and eventually prolong the growing season; studies on which breeding techniques (Goecke et al. 2020) are more effective in *S. latissima* are all likely to increase and provide valuable tools for cultivation and restoration.

*S. latissima* can be utilised for numerous applications, ranging from human consumption and animal nutrition to fertilisers, biofuels, cosmetics, pharmaceuticals, and materials. It can either be used directly as a raw material, or by initial biorefining into various components. *S.*

*latissima* is already being used commercially for some of these markets, mainly for food and to some extent animal feed. More research and further documentation of effects is necessary for *S. latissima* to be more widely used for markets like functional feed, materials and biomedical applications. The harvest season for *S. latissima* is condensed to a 6-8-week period in spring/early summer for most of the near-coast locations where the species is cultivated nowadays. Later in the season, when water temperature increases, epiphytes grow on the kelp fronds, making it less suitable for some applications, including human consumption and animal nutrition. Other markets including biomaterials, and biostimulants where specific components are extracted in a biorefinery process can to a greater extent utilize late-harvested *S. latissima* with some biofouling. Such fractionation of the biomass toward different markets can effectively extend the current harvesting season and reduce biomass waste. *S. latissima* is an easily perishable raw material that must be stabilised quickly after harvesting. Freezing and drying are the main stabilisation methods used today. Development of less energy-intensive and more cost-efficient processing methods will be of great importance to lower production costs and enable rapid processing of large amounts. Acid preservation and fermentation are promising methods currently being evaluated for various markets and fermented *S. latissima* is already used commercially for pig feed applications (Larsen et al. 2021). Certain components from *S. latissima*, such as the polysaccharides, can be degraded during long-time storage at low pH (Nøkling-Eide et al. 2023b), necessitating optimization and evaluation of these processes toward the intended applications and markets.

In the near future, the ecological impacts of *S. latissima* farming and how this could contribute to climate change mitigation and adaptation will need to be further explored. A recent review on the effects of kelp aquaculture on biodiversity revealed a general lack of data on the topic (Forbes et al. 2022). They warn that kelp farming might not be the ideal solution to increase ecosystem services provided by marine forests. Similarly, while seaweed farming is being advocated as a solution to fight climate change (Duarte et al. 2017; Hurd et al. 2022), several authors have been critical of oversimplifications of this role and call for more research before large productions are encouraged (Hasselström and Thomas 2022; Pessarrodona et al. 2023; Troell et al. 2023).

The expected increase in *S. latissima* farms and capacity over the next decades raises societal challenges. Namely, the competition for space with other maritime activities might arise, for example, with fisheries and wind turbines, the latter also expected to proliferate. Acceptance by local communities will depend on this competition but also on the number of jobs created and the impact on the landscape (lower than the one created by wind turbines, for example).

On a governance level, sustainable *S. latissima* farming is an excellent economic activity to address pressing global issues, such as climate change, eutrophication and marine biodiversity loss. However, the extent of its application will depend on regional and local marine spatial planning plans, legislation and overall public acceptance.

**Authors' contributions** MS, NS, CM, HL, SN, BBD, LS, KB and SF conceived and planned the review article. All authors contributed to the writing and editing of the manuscript and approved the final manuscript.

**Funding** Open access funding provided by SINTEF. The contributions of ND and SN were conducted in the frame of the project FACE-IT (The Future of Arctic Coastal Ecosystems – Identifying Transitions in Fjord Systems and Adjacent Coastal Areas). FACE-IT has received funding from the European Union's Horizon 2020 research and innovation programme under grant agreement No 869154. CM is supported by ANERIS (grant number 101094924), and previously by FutureMARES (grant number 869300) and by ThermalBuffer (PTDC/BIA-BMA/31088/2017 and PTDC/BIA-BMA/31088/2017). BBD received funding from the collaborative research centre SFB1127/2/3 ChemBioSys (Deutsche Forschungsgemeinschaft - Project ID 239748522) and previously a joint PhD scholarship from the Brittany region (Project HOSALA) and Sorbonne University (ED227).

**Data availability** We present no original data, no calculations resembling meta-analysis in this review, hence a data availability statement does not apply.

## Declarations

**Competing interests** The authors declare no competing interests.

**Open Access** This article is licensed under a Creative Commons Attribution 4.0 International License, which permits use, sharing, adaptation, distribution and reproduction in any medium or format, as long as you give appropriate credit to the original author(s) and the source, provide a link to the Creative Commons licence, and indicate if changes were made. The images or other third party material in this article are included in the article's Creative Commons licence, unless indicated otherwise in a credit line to the material. If material is not included in the article's Creative Commons licence and your intended use is not permitted by statutory regulation or exceeds the permitted use, you will need to obtain permission directly from the copyright holder. To view a copy of this licence, visit <http://creativecommons.org/licenses/by/4.0/>.

## References

Aasen IM, Sandbakken IS, Toldnes B, Roleda MY, Slizyte R (2022) Enrichment of the protein content of the macroalgae *Saccharina latissima* and *Palmaria palmata*. *Algal Res* 65:102727

Abdollahi M, Axelsson J, Carlsson N-G, Nylund GM, Albers E, Undeland I (2019) Effect of stabilization method and freeze/thaw-aided precipitation on structural and functional properties of proteins recovered from brown seaweed (*Saccharina latissima*). *Food Hydrocoll* 96:140–150

Adams JM, Gallagher JA, Donnison IS (2009) Fermentation study on *Saccharina latissima* for bioethanol production considering variable pre-treatments. *J Appl Phycol* 21:569–574

Adams JMM, Turner LB, Toop TA, Kirby ME, Rolin C, Judd E, Inkster R, McEvoy L, Mirza WM, Theodorou MK, Gallagher J (2020) Evaluation of pyrolysis chars derived from marine macroalgae silage as soil amendments. *GCB Bioenergy* 12:706–727

Afonso C, Matos J, Guarda I, Gomes-Bispo A, Gomes R, Cardoso C, Guefão S, Delgado I, Coelho I, Castanheira I, Bandarra NM (2021) Bioactive and nutritional potential of *Alaria esculenta* and *Saccharina latissima*. *J Appl Phycol* 33:501–513

Ager TG, Krause-Jensen D, Olesen B, Carlson DF, Winding MHS, Sejr MK (2023) Macroalgal habitats support a sustained flux of floating biomass but limited carbon export beyond a Greenland fjord. *Sci Total Environ* 872:162224

Akomea-Frempong S, Skonberg DI, Camire ME, Perry JJ (2021) Impact of blanching, freezing, and fermentation on physicochemical, microbial, and sensory quality of sugar kelp (*Saccharina latissima*). *Foods* 10:2258

Albers E, Malmhäll-Bah E, Olsson J, Sterner M, Mayers JJ, Nylund GM, Rupaar-Gadd K, Abdollahi M, Cvijetinovic S, Welander U, Edlund U, Pavia H, Undeland I (2021) Influence of preservation methods on biochemical composition and downstream processing of cultivated *Saccharina latissima* biomass. *Algal Res* 55:102261

Andersen GS, Moy FE, Christie H (2019) In a squeeze: Epibiosis may affect the distribution of kelp forests. *Ecol Evol* 9:2883–2897

Angell AR, Angell SF, De Nys R, Paul NA (2016) Seaweed as a protein source for mono-gastric livestock. *Trends Food Sci Technol* 54:74–84

Augyte S, Kim JK, Yarish C (2021) Seaweed aquaculture – From historic trends to current innovation. *J World Aquac Soc* 52:1004–1008

Augyte S, Wikfors GH, Pitchford S, Marty-Riveira M, Umanzor S, Lindell S, Bailey D, Yarish C (2020) The application of flow cytometry for kelp meiospore isolation. *Algal Res* 46:101810

Ayala M, Thomsen M, Pizzol M (2023) Life cycle assessment of pilot scale production of seaweed-based bioplastic. *Algal Res* 71:103036

Azevedo IC, Duarte PM, Marinho GS, Neumann F, Sousa-Pinto I (2019) Growth of *Saccharina latissima* (Laminariales, Phaeophyceae) cultivated offshore under exposed conditions. *Phycologia* 58:504–515

Azevedo IC, Marinho GS, Silva DM, Sousa-Pinto I (2016) Pilot scale land-based cultivation of *Saccharina latissima* Linnaeus at southern European climate conditions: Growth and nutrient uptake at high temperatures. *Aquaculture* 459:166–172

Bach Q-V, Sillero MV, Tran K-Q, Skjermo J (2014) Fast hydrothermal liquefaction of a Norwegian macro-alga: Screening tests. *Algal Res* 6:271–276

Bak UG, Gregersen Ó, Infante J (2020) Technical challenges for offshore cultivation of kelp species: Lessons learned and future directions. *Bot Mar* 63:341–353.

Bak UG, Mols-Mortensen A, Gregersen O (2018) Production method and cost of commercial-scale offshore cultivation of kelp in the Faroe Islands using multiple partial harvesting. *Algal Res* 33:36–47

Bak UG, Nielsen CW, Marinho GS, Gregersen Ó, Jónsdóttir R, Holdt SL (2019) The seasonal variation in nitrogen, amino acid, protein and nitrogen-to-protein conversion factors of commercially cultivated Faroese *Saccharina latissima*. *Algal Res* 42:101576

Banach JL, Hoek-van Den Hil EF, van der Fels-Klerx HJ (2020) Food safety hazards in the European seaweed chain. *Compr Rev Food Sci Food Saf* 19:332–364

Barbier M, Charrier B, Araujo R, Holdt SL, Jacquemin B, Rebours C (2019) PEGASUS - Phycormorph European Guidelines for a

- Sustainable Aquaculture of Seaweeds. COST Action FA1406. Barbier M, Charrier B (Eds) Roscoff, France
- Barbosa M, Fernandes F, Pereira DM, Azevedo IC, Sousa-Pinto I, Antrade PB, Valentão P (2020) Fatty acid patterns of the kelps *Saccharina latissima*, *Saccorhiza polyschides* and *Laminaria ochroleuca*: Influence of changing environmental conditions. *Arab J Chem* 13:45–58
- Bekkby T, Torstensen RRG, Grünfeld LAH, Gundersen H, Fredriksen S, Rinde E, Christie H, Walday M, Andersen GS, Brkjacic MS, Neves L, Hancke K (2023) ‘Hanging gardens’ – Comparing fauna communities in kelp farms and wild kelp forests. *Front Mar Sci* 10:1066101
- Bi D, Yang X, Yao L, Hu Z, Li H, Xu X, Lu J (2022) Potential food and nutraceutical applications of alginate: A review. *Mar Drugs* 20:564
- Bilan MI, Grachev AA, Shashkov AS, Kelly M, Sanderson CJ, Nifantiev NE, Usov AI (2010) Further studies on the composition and structure of a fucoidan preparation from the brown alga *Saccharina latissima*. *Carbohydr Res* 345:2038–2047
- Birgersson PS, Oftebro M, Strand WI, Aarstad OA, Sætrom GI, Sletta H, Arlovaachmann, ØFL (2023) Sequential extraction and fractionation of four polysaccharides from cultivated brown algae *Saccharina latissima* and *Alaria esculenta*. *Algal Res* 69:102928
- Black WAP (1950) The seasonal variation in weight and chemical composition of the common British Laminariaceae. *J Mar Biol Assoc U K* 29:45–72
- Blikra MJ, Løvdal T, Vaka MR, Roiha IS, Lunestad BT, Lindseth C, Skipnes D (2019) Assessment of food quality and microbial safety of brown macroalgae (*Alaria esculenta* and *Saccharina latissima*). *J Sci Food Agric* 99:1198–1206
- Blikra MJ, Wang X, James P, Skipnes D (2021) *Saccharina latissima* cultivated in northern Norway: Reduction of potentially toxic elements during processing in relation to cultivation depth. *Foods* 10:1290
- Boake P, Tran HN, Lee DS, Woo SH (2019) Effect of water washing pretreatment on property and adsorption capacity of macroalgae-derived biochar. *J Environ Manage* 233:165–174
- Boderskov T, Rasmussen MB, Bruhn A (2021) Obtaining spores for the production of *Saccharina latissima*: Seasonal limitations in nature, and induction of sporogenesis in darkness. *J Appl Phycol* 33:1035–1046
- Boderskov T, Rasmussen MB, Bruhn A (2023) Upscaling cultivation of *Saccharina latissima* on net or line systems; comparing biomass yields and nutrient extraction potentials. *Front Mar Sci* 10:992179
- Boderskov T, Rasmussen MB, Cassard CH, Svendsgaard J, Enevoldsen LN, Bruhn A (2022) Comparing effects of nutrient sources approved for organic seaweed production on hatchery stage development of sugar kelp *Saccharina latissima*. *Algal Res* 61:102602
- Boderskov T, Schmedes PS, Bruhn A, Rasmussen MB, Nielsen MM, Pedersen MF (2016) The effect of light and nutrient availability on growth, nitrogen, and pigment contents of *Saccharina latissima* (Phaeophyceae) grown in outdoor tanks, under natural variation of sunlight and temperature, during autumn and early winter in Denmark. *J Appl Phycol* 28:1153–1165
- Bogolitsyn K, Parshina A, Ivanchenko N (2022a) The assessment of sorption properties of protein-polysaccharide complexes of brown algae *Laminaria digitata* and *Saccharina latissima* under a biorefinery concept. *Biomass Convers Biorefinery*, <https://doi.org/10.1007/s13399-022-03212-7>
- Bogolitsyn KG, Parshina AE, Ivanchenko NL, Bogdanovich NI, Arkhilin MA (2022b) The capillary and porous structure of the protein-cellulose complexes of Arctic brown algae *Laminaria digitata* and *Saccharina latissima*. *Cellulose* 29:7037–7048
- Boldreel E, Attard K, Hancke K, Glud R (2023) Microbial degradation dynamics of farmed kelp deposits from *Saccharina latissima* and *Alaria esculenta*. *Mar Ecol Prog Ser* 709:1–15
- Bouga M, Combet E (2015) Emergence of seaweed and seaweed-containing foods in the UK: Focus on labeling, iodine content, toxicity and nutrition. *Foods* 4:240–253
- Breton TS, Nettleton JC, O’Connell B, Bertocci M (2018) Fine-scale population genetic structure of sugar kelp, *Saccharina latissima* (Laminariales, Phaeophyceae), in eastern Maine, USA. *Phycologia* 57:32–40
- Broch OJ, Ellingsen IH, Forbord S, Wang X, Volent Z, Alver MO, Handa A, Andresen K, Slagstad D, Reitan KI, Olsen Y, Skjermo J (2013) Modelling the cultivation and bioremediation potential of the kelp *Saccharina latissima* in close proximity to an exposed salmon farm in Norway. *Aquac Environ Interact* 4:187–206
- Broch OJ, Alver MO, Bekkby T, Gundersen H, Forbord S, Handa A, Skjermo J, Hancke K (2019) The kelp cultivation potential in coastal and offshore regions of Norway. *Front Mar Sci* 5:529
- Broch OJ, Hancke K, Ellingsen IH (2022) Dispersal and deposition of detritus from kelp cultivation. *Front Mar Sci* 9:840531
- Broch OJ, Slagstad D (2012) Modelling seasonal growth and composition of the kelp *Saccharina latissima*. *J Appl Phycol* 24:759–776
- Brown ES, Allsopp PJ, Magee PJ, Gill CI, Nitecki S, Strain CR, McSorley EM (2014) Seaweed and human health. *Nutr Rev* 72:205–216
- Bruhn A, Brynning G, Johansen A, Lindegaard MS, Sveigaard HH, Aarup B, Fonager L, Andersen LL, Rasmussen MB, Larsen MM, Elsser-Gravesen D, Børsting ME (2019) Fermentation of sugar kelp (*Saccharina latissima*) – Effects on sensory properties, and content of minerals and metals. *J Appl Phycol* 31:3175–3187
- Bruhn A, Janicek T, Manns D, Nielsen MM, Balsby TJS, Meyer AS, Rasmussen MB, Hou X, Saake B, Göke C, Bjerre AB (2017) Crude fucoidan content in two North Atlantic kelp species, *Saccharina latissima* and *Laminaria digitata* – Seasonal variation and impact of environmental factors. *J Appl Phycol* 29:3121–3137
- Bruhn A, Tørring DB, Thomsen M, Canal-Vergés P, Nielsen MM, Rasmussen MB, Eybye KL, Larsen MM, Balsby TJS, Petersen JK (2016) Impact of environmental conditions on biomass yield, quality, and bio-mitigation capacity of *Saccharina latissima*. *Aquac Environ Interact* 8:619–636
- Buck BH, Krause G, Pogoda B, Grote B, Weyer L, Goseberg N, Schupp MF, Mochtak A, Czybulka D (2017) The German case study: Pioneer projects of aquaculture-wind farm multi-uses. In: Buck BH, Langan R (eds) *Aquaculture Perspective of Multi-Use Sites in the Open Ocean*. Springer, Cham, pp 253–354
- Burgunter-Delamare B, Rousvoal S, Legeay E, Tanguy G, Fredriksen S, Boyen C, Dittami SM (2023) The *Saccharina latissima* microbiome: Effects of region, season, and physiology. *Front Microbiol* 13:1050939
- Buschmann AH, Camus C (2019) An introduction to farming and biomass utilisation of marine macroalgae. *Phycologia* 58:443–445
- Cai J, Lovatelli A, Gamarro EG, Geehan J, Luciente D, et al (2021) Seaweeds and microalgae: An overview for unlocking their potential in global aquaculture development. *FAO Fisheries and Aquaculture Circular No. 1229*. FAO, Rome
- Campbell I, Macleod A, Sahlmann C, Neves L, Funderrud J, Øverland M, Hughes AD, Stanley M (2019) The environmental risks associated with the development of seaweed farming in Europe – Prioritizing key knowledge gaps. *Front Mar Sci* 6:107
- Carras MA, Knowler D, Pearce CM, Hamer A, Chopin T, Weaire T (2020) A discounted cash-flow analysis of salmon monoculture and Integrated Multi-Trophic Aquaculture in eastern Canada. *Aquac Econ Manag* 24:43–63
- Cavonius LR, Carlsson N-G, Undeland I (2014) Quantification of total fatty acids in microalgae: Comparison of extraction and transesterification methods. *Anal Bioanal Chem* 406:7313–7322



- Cebrián-Lloret V, Metz M, Martínez-Abad A, Knutsen SH, Balance S, Lopez-Rubio A, Martínez-Sanz M (2022) Valorization of alginate-extracted seaweed biomass for the development of cellulose-based packaging films. *Algal Res* 61:102576
- Chapman AS, Stévant P, Larssen WE (2015) Food or fad? Challenges and opportunities for including seaweeds in a Nordic diet. *Bot Mar* 58:423–433.
- Chauton MS, Forbord S, Mäkinen S, Sarno A, Slizyte R, Mozuraityte R, Standal IB, Skjermo J (2021) Sustainable resource production for manufacturing bioactives from micro- and macroalgae: Examples from harvesting and cultivation in the Nordic region. *Physiol Plant* 173:495–506
- Chopin T, Tacon AGJ (2021) Importance of seaweeds and extractive species in global aquaculture production. *Rev Fish Sci Aquac* 29:139–148
- Coleman S, St. Gelais AT, Fredriksson DW, Dewhurst T, Brady DC (2022) Identifying scaling pathways and research priorities for kelp aquaculture nurseries using a techno-economic modeling approach. *Front Mar Sci* 9:894461
- Corrigan S, Brown AR, Tyler CR, Wilding C, Daniels C, Ashton IGC, Smale DA (2023) Development and diversity of epibiont assemblages on cultivated sugar kelp (*Saccharina latissima*) in relation to farming schedules and harvesting techniques. *Life* 13:209
- Craigie JS (2011) Seaweed extract stimuli in plant science and agriculture. *J Appl Phycol* 23:371–393
- Cusson AJ, Burkholder KM, Byron CJ, Grebe GS, Deveau AM (2021) Impact of time of harvest and drying method on antimicrobial activity of *Saccharina latissima* against two *Staphylococcus aureus* strains. *Appl Phycol* 2:80–88
- Dang BT, Ramaraj R, Huynh KP, Le MV, Tomoaki I, Pham TT, Hoang Luan V, Thi Le Na P, Tran DPH (2023) Current application of seaweed waste for composting and biochar: A review. *Bioresour Technol* 375:128830
- Davis TA, Volesky B, Mucci A (2003) A review of the biochemistry of heavy metal biosorption by brown algae. *Water Res* 37:4311–4330
- De Jong DLC, Timmermans KR, De Winter JM, Derksen GCH (2021) Effects of nutrient availability and light intensity on the sterol content of *Saccharina latissima* (Laminariales, Phaeophyceae). *J Appl Phycol* 33:1101–1113
- DeAngelo J, Saenz BT, Arzeno-Soltero IB, Frieder CA, Long MC, Hamman J, Davis KA, Davis SJ (2023) Economic and biophysical limits to seaweed farming for climate change mitigation. *Nat Plants* 9:45–57
- Deng C, Lin R, Kang X, Wu B, O'Shea R, Murphy JD (2020) Improving gaseous biofuel yield from seaweed through a cascading circular bioenergy system integrating anaerobic digestion and pyrolysis. *Renew Sustain Energy Rev* 128:109895
- D'Este M, Alvarado-Morales M, Ciofalo A, Angelidaki I (2017) Macroalgae *Laminaria digitata* and *Saccharina latissima* as potential biomasses for biogas and total phenolics production: Focusing on seasonal and spatial variations of the algae. *Energy Fuels* 31:7166–7175
- Diehl N, Li H, Scheschonk L, Burgunter-Delamare B, Niedzwiedz S, Forbord S, Sæther M, Bischof K, Monteiro C (2023) The sugar kelp *Saccharina latissima* I: recent advances in a changing climate. *Ann Bot* 18:mcad173
- Directorate of Fisheries (2023) Aquaculture/Algae/Sales 2015-2022. Directorate of Fisheries, Norway. [https://www.fiskeridir.no/Englsh/Aquaculture/Statistics/Algae/\\_attachment/download/e38eb0c8-25f3-44d2-971f-b8f7d4b41c37:5b65ee4359761a119ad0731815246348a59f17eb/sta-alge-04-salg.xlsx](https://www.fiskeridir.no/Englsh/Aquaculture/Statistics/Algae/_attachment/download/e38eb0c8-25f3-44d2-971f-b8f7d4b41c37:5b65ee4359761a119ad0731815246348a59f17eb/sta-alge-04-salg.xlsx) ; accessed 2 May 2023
- Dolliver J, O'Connor NE (2022) Estimating growth, loss and potential carbon sequestration of farmed kelp: A case study of *Saccharina latissima* at Strangford Lough, Northern Ireland. *Appl Phycol* 3:324–339
- Dörschmann P, Bittkau KS, Neupane S, Roeder J, Alban S, Klettner A (2019) Effects of fucoidans from five different brown algae on oxidative stress and VEGF interference in ocular cells. *Mar Drugs* 17:258
- Dörschmann P, Thalenhorst T, Seeba C, Tischhörer MT, Neupane S, Roeder J, Alban S, Klettner A (2023) Comparison of fucoidans from *Saccharina latissima* regarding age-related macular degeneration relevant pathomechanisms in retinal pigment epithelium. *Int J Mol Sci* 24:7939
- Duarte CM, Middelburg JJ, Caraco N (2005) Major role of marine vegetation on the oceanic carbon cycle. *Biogeosciences* 2:1–8
- Duarte CM, Wu J, Xiao X, Bruhn A, Krause-Jensen D (2017) Can seaweed farming play a role in climate change mitigation and adaptation? *Front Mar Sci* 4:100
- Ebbing APJ, Fivash GS, Martin NB, Pierik R, Bouma TJ, Kromkamp JC, Timmermans K (2021a) In-culture selection and the potential effects of changing sex ratios on the reproductive success of multiannual delayed gametophytes of *Saccharina latissima* and *Alaria esculenta*. *J Mar Sci Eng* 9:1250
- Ebbing APJ, Fivash GS, Pierik R, Bouma TJ, Kromkamp, Timmermans (2022) The SeaCoRe system for large scale kelp aquaculture: A plug-and-play, compatible, open-source system for the propagation and transport of clonal gametophyte cultures. *J Appl Phycol* 34:517–527
- Ebbing APJ, Pierik R, Bouma TJ, Kromkamp JC, Timmermans K (2020) How light and biomass density influence the reproduction of delayed *Saccharina latissima* gametophytes (Phaeophyceae). *J Phycol* 56:709–718
- Ebbing APJ, Pierik R, Fivash GS, van de Loosdrecht NCJ, Bouma TJ, Kromkamp JC, Timmermans K (2021b) The role of seasonality in reproduction of multiannual delayed gametophytes of *Saccharina latissima*. *J Phycol* 57:1580–1589
- Ehrig K, Alban S (2014) Sulfated galactofucan from the brown alga *Saccharina latissima* – Variability of yield, structural composition and bioactivity. *Mar Drugs* 13:76–101
- Emblemsvåg J, Kvadsheim NP, Halfdanarson J, Koesling M, Nystrand BT, Sunde J, Rebours C (2020) Strategic considerations for establishing a large-scale seaweed industry based on fish feed application: A Norwegian case study. *J Appl Phycol* 32:4159–4169
- EU (2002a) Regulation (EC) No 178/2002 of the European Parliament and of the Council of 28 January 2002 laying down the general principles and requirements of food law, establishing the European Food Safety Authority and laying down procedures in matters of food safety. *Off J Eur Union* 31:1–24
- EU (2002b) Directive 2002/32/EC of the European Parliament and of the Council of 7 May 2002 on undesirable substances in animal feed – Council statement. *Off J Eur Union* 140:10–22
- EU (2006) Commission Regulation (EC) No 1881/2006 of 19 December 2006 setting maximum levels for certain contaminants in foodstuffs (Text with EEA relevance). *Off J Eur Union* 364:5–24
- EU (2013) Commission Regulation (EU) No 68/2013 of 16 January 2013 on the Catalogue of feed materials (Text with EEA relevance). *Off J Eur Union* 29:1–64
- EU (2017) Commission Implementing Regulation (EU) 2017/2470 of 20 December 2017 establishing the Union list of novel foods in accordance with Regulation (EU) 2015/2283 of the European Parliament and of the Council on novel foods (Text with EEA relevance). *Off J Eur Union* 351:72–201
- EU (2019) Commission Regulation (EU) 2019/1869 of 7 November 2019 amending and correcting Annex I to Directive 2002/32/EC of the European Parliament and of the Council as regards maximum levels for certain undesirable substances in animal feed (Text with EEA relevance). *Off J Eur Union* 289:32–36

- EU (2018) Commission Recommendation (EU) 2018/464 of 19 March 2018 on the monitoring of metals and iodine in seaweed, halophytes and products based on seaweed (Text with EEA relevance). *Off J Eur Union* 78:16–18
- Evanckow A, Christie H, Hancke K, Brysting AK, Junge C, Fredrikson S, Thaulow J (2019) Genetic heterogeneity of two bioeconomically important kelp species along the Norwegian coast. *Conserv Genet* 20:615–628
- FAO (2021) Fishery and Aquaculture Statistics 2019/FAO annuaire. Statistiques des pêches et de l'aquaculture 2019/FAO anuario. Estadísticas de pesca y acuicultura 2019. FAO, Rome
- Farghali M, Mohamed IMA, Osman AI, Rooney DW (2023) Seaweed for climate mitigation, wastewater treatment, bioenergy, bioplastic, biochar, food, pharmaceuticals, and cosmetics: A review. *Environ Chem Lett* 21:97–152
- Fernand F, Israel A, Skjermo J, Wichard T, Timmermans KR, Golberg A (2017) Offshore macroalgae biomass for bioenergy production: Environmental aspects, technological achievements and challenges. *Renew Sustain Energy Rev* 75:35–45
- Fernandes F, Barbosa M, Oliveira AP, Azevedo IC, Sousa-Pinto I, Valentão P, Antrade PB (2016) The pigments of kelps (Ochrophyta) as part of the flexible response to highly variable marine environments. *J Appl Phycol* 28:3689–3696
- Ferreira M, Larsen BK, Granby K, Cunha SC, Monteiro C, Fernandes JO, Nunes ML, Marques A, Dias J, Cunha I, Castro LFC, Valente LMP (2020) Diets supplemented with *Saccharina latissima* influence the expression of genes related to lipid metabolism and oxidative stress modulating rainbow trout (*Oncorhynchus mykiss*) fillet composition. *Food Chem Toxicol* 140:111332
- Fielor R, Greenacre M, Matsson S, Neves L, Forbord S, Hancke K (2021) Erosion dynamics of cultivated kelp, *Saccharina latissima*, and implications for environmental management and carbon sequestration. *Front Mar Sci* 8:632725
- Filbee-Dexter K, Pessarrodona A, Duarte CM, Krause-Jensen D, Hancke K, Smale D, Wernberg T (2023) Seaweed forests are carbon sinks that may help mitigate CO<sub>2</sub> emissions: A comment on Gallagher et al. (2022). *ICES J Mar Sci* 80:1814–1819.
- Fitton JH (2011) Therapies from fucoidan; multifunctional marine polymers. *Mar Drugs* 9:1731–1760
- Fjære E, Poulsen R, Duinker A, Liaset B, Hansen M, Madsen L, Myrmed LS (2022) Iodine bioavailability and accumulation of arsenic and cadmium in rats fed sugar kelp (*Saccharina latissima*). *Foods* 11:3943
- Flavin K, Flavin N, Flahive B (2013) Kelp farming manual a guide to the processes, techniques, and equipment for farming kelp in New England waters. Ocean Approved, LLC, Portland. 160 p
- Forbes H, Shelamoff V, Visch W, Layton C (2022) Farms and forests: Evaluating the biodiversity benefits of kelp aquaculture. *J Appl Phycol* 34:3059–3067
- Forbord S, Matsson S, Brodahl GE, Bluhm BA, Broch OJ, Handå A, Metaxas A, Skjermo J, Steinhovden KB, Olsen Y (2020a) Latitudinal, seasonal and depth-dependent variation in growth, chemical composition and biofouling of cultivated *Saccharina latissima* (Phaeophyceae) along the Norwegian coast. *J Appl Phycol* 32:2215–2232
- Forbord S, Skjermo J, Arff J, Handå A, Reitan KI, Bjerregaard R, Lünning K (2012) Development of *Saccharina latissima* (Phaeophyceae) kelp hatcheries with year-round production of zoospores and juvenile sporophytes on culture ropes for kelp aquaculture. *J Appl Phycol* 24:393–399
- Forbord S, Steinhovden KB, Rød KK, Handå A, Skjermo J (2018) Cultivation protocol for *Saccharina latissima*. In: Charrier B, Wichard T, Reddy CRK (eds) *Protocols for Macroalgae Research*. CRC Press, Boca Raton, pp 37–59
- Forbord S, Steinhovden KB, Solvang T, Handå A, Skjermo J (2020b) Effect of seeding methods and hatchery periods on sea cultivation of *Saccharina latissima* (Phaeophyceae): A Norwegian case study. *J Appl Phycol* 32:2201–2212
- Førde H, Forbord S, Handå A, Fossberg J, Arff J, Johnsen G, Reitan KI (2016) Development of bryozoan fouling on cultivated kelp (*Saccharina latissima*) in Norway. *J Appl Phycol* 28:1225–1234
- Foseid L, Natvik I, Devle H, Ekeberg D (2020) Identification of fatty acids in fractionated lipid extracts from *Palmaria palmata*, *Alaria esculenta* and *Saccharina latissima* by off-line SPE GC-MS. *J Appl Phycol* 32:4251–4262
- Fossberg J, Forbord S, Broch OJ, Malzahn AM, Jansen H, Handå A, Førde H, Bergvik M, Fleddum AL, Skjermo J, Olsen Y (2018) The potential for upscaling kelp (*Saccharina latissima*) cultivation in salmon-driven integrated multi-trophic aquaculture (IMTA). *Front Mar Sci* 5:418
- Fredriksson DW, St. Gelais AT, Dewhurst T, Coleman S, Brady DC, Costa-Pierce BA (2023) Mooring tension assessment of a single line kelp farm with quantified biomass, waves, and currents. *Front Mar Sci* 10:1178548
- Freitas JRC, Salinas Morrondo JM, Cremades Ugarte J (2016) *Saccharina latissima* (Laminariales, Ochrophyta) farming in an industrial IMTA system in Galicia (Spain). *J Appl Phycol* 28:377–385
- Frigstad H, Gundersen H, Andersen GS, Borgersen G (2021) Blue Carbon – Climate adaptation, CO<sub>2</sub> uptake and sequestration of carbon in Nordic blue forests. Nordic Council of Ministers, Copenhagen, p 139
- Gabbia D, De Martin S (2020) Brown seaweeds for the management of metabolic syndrome and associated diseases. *Molecules* 25:4182
- Gahan DA, Lynch MB, Callan JJ, O'Sullivan JT, O'Doherty JV (2009) Performance of weanling piglets offered low-, medium- or high-lactose diets supplemented with a seaweed extract from *Laminaria* spp. *Animal* 3:24–31
- Ganesan AR, Tiwari U, Rajauria G (2019) Seaweed nutraceuticals and their therapeutic role in disease prevention. *Food Sci Hum Wellness* 8:252–263
- GESAMP (2019) High level review of a wide range of proposed marine geoengineering techniques. Report No. 98. International Maritime Organisation, London
- Goecke F, Gómez Garreta A, Martín-Martín R, Rull Lluch J, Skjermo J, Ergon Å (2022) Nuclear DNA content variation in different life cycle stages of sugar kelp, *Saccharina latissima*. *Mar Biotechnol* 24:706–721
- Goecke F, Klemetsdal G, Ergon Å (2020) Cultivar development of kelps for commercial cultivation – Past lessons and future prospects. *Front Mar Sci* 8:110
- Gomez-Zavaglia A, Prieto Lage MA, Jimenez-Lopez C, Mejuto JC, Simal-Gandara J (2019) The potential of seaweeds as a source of functional ingredients of prebiotic and antioxidant value. *Antioxidants* 8:406
- Grabež V, Coll-Brasas E, Fulladosa E, Hallenstvedt E, Håseth TT, Øverland M, Berg P, Egelanddsdal B (2022) Seaweed inclusion in finishing lamb diet promotes changes in micronutrient content and flavour-related compounds of raw meat and dry-cured leg (Fenalår). *Foods* 11:1043
- Grabež V, Devle H, Kidane A, Mydland LT, Øverland M, Ottestad S, Berg P, Kåsin K, Ruud L, Karlsen V, Živanović V, Egelanddsdal B (2023) Sugar kelp (*Saccharina latissima*) seaweed added to a growing-finishing lamb diet has a positive effect on quality traits and on mineral content of meat. *Foods* 12:2131
- Granby K, Amlund H, Valente LMP, Dias J, Adoff G, Sousa V, Marques A, Sloth JJ, Larsen BK (2020) Growth performance, bioavailability of toxic and essential elements and nutrients, and biofortification of iodine of rainbow trout (*Oncorhynchus mykiss*) fed blends with sugar kelp (*Saccharina latissima*). *Food Chem Toxicol* 141:111387
- Grebe GS, Byron CJ, Brady DC, Geisser AH, Brennan KD (2021a) The nitrogen bioextraction potential of nearshore *Saccharina*

- latissima* cultivation and harvest in the Western Gulf of Maine. *J Appl Phycol* 33:1741–1757
- Grebe GS, Byron CJ, Brady DC, St Gelais AT, Costa-Pierce BA (2021b) The effect of distal-end trimming on *Saccharina latissima* morphology, composition, and productivity. *J World Aquac Soc* 52:1081–1098
- Grouffh-Jacobsen S, Hess SY, Aakre I, Folven Gjengedal EL, Blandhoel Pettersen K, Henjum S (2020) Vegans, vegetarians and pescatarians are at risk of iodine deficiency in Norway. *Nutrients* 12:3555
- Guzman-Puyol S, Russo D, Penna I, Ceseracciu L, Palazon F, Scarpellini A, Cingolani R, Bertorelli R, Bayer IS, Heredia-Guerrero JA, Athanassiou A (2017) Facile production of seaweed-based biomaterials with antioxidant and anti-inflammatory activities. *Algal Res* 27:1–11
- Hafting JT, Craigie JS, Stengel DB, Loureiro RR, Buschmann AH, Yarish C, Edwards MD, Critchley AT (2015) Prospects and challenges for industrial production of seaweed bioactives. *J Phycol* 51:821–837
- Hafting JT, Critchley AT, Cornish ML, Hubley SA, Archibald AF (2012) On-land cultivation of functional seaweed products for human usage. *J Appl Phycol* 24:385–392
- Hahn T, Lang S, Ulber R, Muffler K (2012) Novel procedures for the extraction of fucoidan from brown algae. *Process Biochem* 47:1691–1698
- Hakvåg S, Nærdal I, Heggeset TMB, Kristiansen KA, Aasen IM, Brautaset T (2020) Production of value-added chemicals by *Bacillus methanolicus* strains cultivated on mannitol and extracts of seaweed *Saccharina latissima* at 50°C. *Front Microbiol* 11:680
- Handå A, Forbord S, Wang X, Broch OJ, Dahle SW, Storseth TR, Reitan KI, Olsen Y, Skjermo J (2013) Seasonal- and depth-dependent growth of cultivated kelp (*Saccharina latissima*) in close proximity to salmon (*Salmo salar*) aquaculture in Norway. *Aquaculture* 414–415:191–201
- Hargrave MS, Nylund GM, Enge S, Pavia H (2022) Co-cultivation with blue mussels increases yield and biomass quality of kelp. *Aquaculture* 550:737832
- Harrysson H, Hayes M, Eimer F, Carlsson N-G, Toth GB, Undeland I (2018) Production of protein extracts from Swedish red, green, and brown seaweeds, *Porphyra umbilicalis* Kützinger, *Ulva lactuca* Linnaeus, and *Saccharina latissima* (Linnaeus) J. V. Lamouroux using three different methods. *J Appl Phycol* 30:3565–3580
- Hasselström L, Thomas J-BE (2022) A critical review of the life cycle climate impact in seaweed value chains to support carbon accounting and blue carbon financing. *Clean Environ Syst* 6:100093
- Hasselström L, Visch W, Gröndahl F, Nylund GM, Pavia H (2018) The impact of seaweed cultivation on ecosystem services – A case study from the west coast of Sweden. *Mar Pollut Bull* 133:53–64
- Haug A (1964) Composition and properties of alginates. PhD Thesis, Norwegian Institute of Technology
- Heidkamp CP, Krak LV, Kelly MMR, Yarish C (2022) Geographical considerations for capturing value in the U.S. sugar kelp (*Saccharina latissima*) industry. *Mar Policy* 144:105221.
- Hogstad S, Licht Cederberg D, Eriksen H, et al (2023) A Nordic approach to food safety risk management of seaweed for use as food: Current status and basis for future work. Nordic Council of Ministers. <https://pub.norden.org/temanord2022-564/>. Accessed 1 June 2023
- Holdt SL, Edwards MD (2014) Cost-effective IMTA: A comparison of the production efficiencies of mussels and seaweed. *J Appl Phycol* 26:933–945
- Holdt SL, Kraan S (2011) Bioactive compounds in seaweed: Functional food applications and legislation. *J Appl Phycol* 23:543–597
- Hong WY (2022) A techno-economic review on carbon capture, utilisation and storage systems for achieving a net-zero CO<sub>2</sub> emissions future. *Carbon Capture Sci Technol* 3:100044
- Hughes AD, Black KD, Campbell I, Davidson K, Kelly MS, Stanley MS (2012) Does seaweed offer a solution for bioenergy with biological carbon capture and storage? *Greenh Gases Sci Technol* 2:402–407
- Hurd CL, Law CS, Bach LT, Britton D, Hovenden M, Paine ER, Raven JA, Tamsitt V, Boyd PW (2022) Forensic carbon accounting: Assessing the role of seaweeds for carbon sequestration. *J Phycol* 58:347–363
- Jensen A, Jorgensen TH (2022) Extracts of *Saccharina latissima* and *Ulva lactuca* affect the balance between growth and immunity in *Arabidopsis thaliana*. *J Appl Phycol* 34:2201–2209
- Jevne LS, Forbord S, Olsen Y (2020) The effect of nutrient availability and light conditions on the growth and intracellular nitrogen components of land-based cultivated *Saccharina latissima* (Phaeophyta). *Front Mar Sci* 7:557460
- Jiang L, Blommaert L, Jansen HM, Broch OJ, Timmermanns KR, Soetaert K (2022a) Carrying capacity of *Saccharina latissima* cultivation in a Dutch coastal bay: A modelling assessment. *ICES J Mar Sci* 79:709–721
- Jiang L, Jansen HM, Broch OJ, Timmermanns KR, Soetaert K (2022b) Modelling spatial variability of cultivated *Saccharina latissima* in a Dutch coastal bay shows benefits of co-cultivation with shellfish. *ICES J Mar Sci* 79:2324–2335
- Jiao G, Yu G, Zhang J, Ewart H (2011) Chemical structures and bioactivities of sulfated polysaccharides from marine algae. *Mar Drugs* 9:196–223
- Jones DB (1931) Factors for converting percentages of nitrogen in foods and feeds into percentages of proteins. US Department of Agriculture, Washington, D.C.
- Jönsson M, Allahgholi L, Rayner M, Nordberg Karlsson E (2023) Exploration of high-pressure processing (HPP) for preservation of the Swedish grown brown macroalgae *Saccharina latissima*. *Front Food Sci Technol* 3:1150482
- Juul L, Stødkilde L, Ingerslev AK, Bruhn A, Jensen SK, Dalsgaard TK (2022) Digestibility of seaweed protein from *Ulva* sp. and *Saccharina latissima* in rats. *Algal Res* 63:102644.
- Karuppusamy S, Rajauria G, Fitzpatrick S, Lyons H, McMahon H, Curtin J, Tiwari BK, O'Donnell C (2022) Biological properties and health-promoting functions of laminarin: A comprehensive review of preclinical and clinical studies. *Mar Drugs* 20:772
- Kerrison PD, Innes M, Macleod A, McCormick E, Elbourne PD, Stanley MS, Hughes AD, Kelly MS (2020) Comparing the effectiveness of twine- and binder-seeding in the Laminariales species *Alaria esculenta* and *Saccharina latissima*. *J Appl Phycol* 32:2173–2181
- Kerrison PD, Stanley MS, Black KD, Hughes AD (2017) Assessing the suitability of twelve polymer substrates for the cultivation of macroalgae *Laminaria digitata* and *Saccharina latissima* (Laminariales). *Algal Res* 22:127–134
- Kerrison PD, Stanley MS, De Smet D, Buyle G, Hughes AD (2019a) Holding (not so) fast: Surface chemistry constrains kelp bioadhesion. *Eur J Phycol* 54:291–299
- Kerrison PD, Stanley MS, Edwards MD, Black KD, Hughes AD (2015) The cultivation of European kelp for bioenergy: Site and species selection. *Biomass Bioenergy* 80:229–242
- Kerrison PD, Stanley MS, Hughes AD (2018a) Textile substrate seeding of *Saccharina latissima* sporophytes using a binder: An effective method for the aquaculture of kelp. *Algal Res* 33:352–357
- Kerrison PD, Stanley MS, Kelly M, MacLeod A, Black KD, Hughes AD (2016) Optimising the settlement and hatchery culture of *Saccharina latissima* (Phaeophyta) by manipulation of growth medium and substrate surface condition. *J Appl Phycol* 28:1181–1191
- Kerrison PD, Stanley MS, Mitchell E, Cunningham L, Hughes AD (2018b) A life-stage conflict of interest in kelp: Higher

- meiospore settlement where sporophyte attachment is weak. *Algal Res* 35:309–318
- Kerrison PD, Twigg G, Stanley M, De Smet D, Buyle G, Pina AM, Hughes AD (2019b) Twine selection is essential for successful hatchery cultivation of *Saccharina latissima*, seeded with either meiospores or juvenile sporophytes. *J Appl Phycol* 31:3051–3060
- Kim J, Kraemer G, Yarish C (2015) Use of sugar kelp aquaculture in Long Island Sound and the Bronx River Estuary for nutrient extraction. *Mar Ecol Prog Ser* 531:155–166
- Kim JK, Kraemer G, Yarish C (2019) Evaluation of the metal content of farm grown *Gracilaria tikvahiae* and *Saccharina latissima* from Long Island Sound and New York Estuaries. *Algal Res* 40:101484
- Kim M-B, Lee Y, Bae M, Kang H, Hu S, Pham TX, Lee J-Y, Park Y-K (2021) Sugar kelp (*Saccharina latissima*) inhibits hepatic inflammation and fibrosis in a mouse model of diet-induced non-alcoholic steatohepatitis. *J Nutr Biochem* 97:108799
- Kirkholt EM, Dikiy A, Shumilina E (2019) Changes in the composition of Atlantic salmon upon the brown seaweed (*Saccharina latissima*) treatment. *Foods* 8:625
- Kite-Powell HL, Ask E, Augyte S, Bailey D, Decker J, Goudey CA, Grebe G, Li Y, Lindell S, Manganelli D, Marty-Rivera M, Ng C, Roberson L, Stekoll M, Umanzor S, Yarish C (2022) Estimating production cost for large-scale seaweed farms. *Appl Phycol* 3:435–445
- Knowler D, Chopin T, Martínez-Españeira R, Neori A, Nobre A, Noce A, Reid G (2020) The economics of Integrated Multi-Trophic Aquaculture: Where are we now and where do we need to go? *Rev Aquac* 12:1579–1594
- Koesling M, Kvalsheim NP, Halvdanarson J, Emblemavag J, Rebours C (2021) Environmental impacts of protein-production from farmed seaweed: Comparison of possible scenarios in Norway. *J Clean Prod* 307:127301
- Konstantin B, Anastasia P, Nikolay I, Daria P (2023) Seasonal variations in the chemical composition of Arctic brown macroalgae. *Algal Res* 72:103112
- Kraan S (2013) Mass-cultivation of carbohydrate rich macroalgae, a possible solution for sustainable biofuel production. *Mitig Adapt Strateg Glob Change* 18:27–46
- Krause-Jensen D, Duarte CM (2016) Substantial role of macroalgae in marine carbon sequestration. *Nat Geosci* 9:737–742
- Kregting L, Healey E, Crowe M, Cunningham EM (2023) Water motion as a conditioning mechanism to improve the yield of the sugar kelp *Saccharina latissima* (Phaeophyceae). *Algal Res* 74:103202
- Kreissig KJ, Hansen LT, Jensen PE, Wegeberg S, Geertz-Hansen O, Sloth J (2021) Characterisation and chemometric evaluation of 17 elements in ten seaweed species from Greenland. *PLoS One* 16:e0243672
- Krogdahl Å, Jaramillo-Torres A, Ahlstrøm Ø, Chikwati E, Aasen I-M, Kortner YM (2021) Protein value and health aspects of the seaweeds *Saccharina latissima* and *Palmaria palmata* evaluated with mink as model for monogastric animals. *Anim Feed Sci Technol* 276:114902
- Krook JL, Duinker A, Larssen WE, Birkeland IM, Skeie S, Horn SJ, Stévant P (2023) Approaches for reducing the iodine content of the brown seaweed *Saccharina latissima* – Effects on sensory properties. *J Appl Phycol*. <https://doi.org/10.1007/s10811-023-02974-5>
- Krumhansl KA, Lee JM, Scheibling RE (2011) Grazing damage and encrustation by an invasive bryozoan reduce the ability of kelps to withstand breakage by waves. *J Exp Mar Biol Ecol* 407:12–18
- Lafeuille B, Tamineaux E, Berger K, Provencher V, Beaulieu L (2023) Variation of the nutritional composition and bioactive potential in edible macroalga *Saccharina latissima* cultivated from Atlantic Canada subjected to different growth and processing conditions. *Foods* 12:1736
- Lähteenmäki-Uutela A, Rahikainen M, Camarena-Gómez MT, Pii-parinen J, Spilling K, Yang B (2021) European Union legislation on macroalgae products. *Aquac Int* 29:487–509
- Lamb JJ, Sarker S, Hjelme DR, Lien KM (2018) Fermentative bioethanol production using enzymatically hydrolysed *Saccharina latissima*. *Adv Microbiol* 08:378–389
- Lane CE, Mayes C, Druehl LD, Saunders GW (2006) A multi-gene molecular investigation of the kelp (*Laminariales*, *Phaeophyceae*) supports substantial taxonomic re-organization. *J Phycol* 42:493–512
- Larsen SU, Ma N, Hou X, Bruhn A, Boderskov T, MacLeod A, Bak UG, Bjerre A-B (2021) Ensiling of sugar kelp biomass for biorefining. *Biomass Bioenergy* 151:106134
- Lavaud R, Ullman DS, Venolia C, Thornber C, Green-Gavrielidis L, Humphries A (2023) Production potential of seaweed and shellfish integrated aquaculture in Narragansett Bay (Rhode Island, U.S.) using an ecosystem model. *Ecol Model* 481:110370.
- Lei J, Fan D, Angera A, Liu Y, Nepf H (2021) Drag force and reconfiguration of cultivated *Saccharina latissima* in current. *Aquac Eng* 94:102169
- Li Y, Umanzor S, Ng C, Huang M, Marty-Rivera M, Bailey D, Aydtlett M, Jannink JL, Lindell S, Yarish C (2022) Skinny kelp (*Saccharina angustissima*) provides valuable genetics for the biomass improvement of farmed sugar kelp (*Saccharina latissima*). *J Appl Phycol* 34:2551–2563
- Lin R, Deng C, Ding L, Bose A, Murphy JD (2019) Improving gaseous biofuel production from seaweed *Saccharina latissima*: The effect of hydrothermal pretreatment on energy efficiency. *Energy Convers Manag* 196:1385–1394
- Liu X, Yuan W, Sharma-Shivappa R, van Zanten J (2017) Antioxidant activity of phlorotannins from brown algae. *Int J Agric Biol Eng* 10:184–191.
- Liu Y, Wikfors GH, Clark P, Pitchford S, Krisak M, Dixon MS, Li Y (2022) A deep dive into the epibiotic communities on aquacultured sugar kelp *Saccharina latissima* in Southern New England. *Algal Res* 63:102654
- López-Contreras AM, Harmsen PF, Blaauw R, Houweling-Tan B, van der Wal H, Huijgen WJJ, van Hal JW (2014) Biorefinery of the brown seaweed *Saccharina latissima* for fuels and chemicals. Proceedings of the Mie Bioforum on Lignocellulose Degradation and Biorefinery, Nemunosato Resort, Mie Prefecture, Japan. <http://edepot.wur.nl/382063>. Accessed 1 June 2023
- Lüning K, Mortensen L (2015) European aquaculture of sugar kelp (*Saccharina latissima*) for food industries: Iodine content and epiphytic animals as major problems. *Bot Mar* 58:449–455.
- Lytou AE, Schoina E, Liu Y, Michalek K, Stanley MS, Panagou EZ, Nychas GE (2021) Quality and safety assessment of edible seaweeds *Alaria esculenta* and *Saccharina latissima* cultivated in Scotland. *Foods* 10:2210
- Mabeau S, Fleurence J (1993) Seaweed in food products: Biochemical and nutritional aspects. *Trends Food Sci Technol* 4:103–107
- Macreadie PI, Anton A, Raven JA et al (2019) The future of blue carbon science. *Nat Commun* 10:3998
- Macreadie PI, Costa MDP, Atwood TB, Friess DA, Kelleway JJ, Kennedy H, Lovelock CE, Serrano O, Duarte CM (2021) Blue carbon as a natural climate solution. *Nat Rev Earth Environ* 2:826–839
- Mæhre HK, Dalheim L, Edvinsen GK, Elvevoll EO, Jensen IJ (2018) Protein determination – Method matters. *Foods* 7:5
- Makkar HPS, Tran G, Heuzé V, Giger-Reverdin S, Lessire M, Lebas F, Ankers P, (2016) Seaweeds for livestock diets: A review. *Anim Feed Sci Technol* 212:1–17
- Manns D, Nielsen MM, Bruhn A, Saake B, Meyer AS (2017) Compositional variations of brown seaweeds *Laminaria digitata* and *Saccharina latissima* in Danish waters. *J Appl Phycol* 29:1493–1506

- Marcos CN, de Evan T, Molina-Alcaide E, Novoa-Garrido M, Weisbjerg MR, Carro MD (2023) Preserving *Saccharina latissima* and *Porphyra umbilicalis* in multinutrient blocks: an *in vitro* evaluation. *Agriculture* 13:263
- Marinho GS, Alvarado-Morales M, Angelidaki I (2016) Valorization of macroalgae *Saccharina latissima* as novel feedstock for fermentation-based succinic acid production in a biorefinery approach and economic aspects. *Algal Res* 16:102–109
- Marinho GS, Holdt SL, Jacobsen C, Angelidaki I (2015a) Lipids and composition of fatty acids of *Saccharina latissima* cultivated year-round in integrated multi-trophic aquaculture. *Mar Drugs* 13:4357–4374
- Marinho GS, Holdt SL, Angelidaki I (2015b) Seasonal variations in the amino acid profile and protein nutritional value of *Saccharina latissima* cultivated in a commercial IMTA system. *J Appl Phycol* 27:1991–2000
- Marinho GS, Holdt SL, Birkeland MJ, Angelidaki I (2015c) Commercial cultivation and bioremediation potential of sugar kelp, *Saccharina latissima*, in Danish waters. *J Appl Phycol* 27:1963–1973
- Marinho GS, Sørensen A-DM, Safafar H, Pedersen AH, Holdt SL (2019) Antioxidant content and activity of the seaweed *Saccharina latissima*: A seasonal perspective. *J Appl Phycol* 31:1343–1354
- Mariotti F, Tomé D, Mirand PP (2008) Converting nitrogen into protein – beyond 6.25 and Jones’ factors. *Crit Rev Food Sci Nutr* 48:177–184
- Martins M, Mesquita LMDS, Vaz BMC, Dias ACRV, Torres-Acista MA, Queguineur B, Coutinho JAP, Ventura SPM (2021) Extraction and fractionation of pigments from *Saccharina latissima* (Linnaeus, 2006) using an ionic liquid + oil + water system. *ACS Sustain Chem Eng* 9:6599–6612
- Matsson S, Christie H, Fielor R (2019) Variation in biomass and biofouling of kelp, *Saccharina latissima*, cultivated in the Arctic, Norway. *Aquaculture* 506:445–452
- Matsson S, Metaxas A, Forbord S, Kristiansen S, Handå A, Bluhm BA (2021) Effects of outplanting time on growth, shedding and quality of *Saccharina latissima* (Phaeophyceae) in its northern distribution range. *J Appl Phycol* 33:2415–2431
- Maulvault AL, Anacleto P, Barbosa V, Sloth JJ, Rasmussen RR, Tediosi A, Fernandez-Tejedor M, van den Heuvel FH, Kotterman M, Marques A (2015) Toxic elements and speciation in seafood samples from different contaminated sites in Europe. *Environ Res* 143:72–81
- McDonnell P, Figat S, O’Doherty JV (2010) The effect of dietary laminarin and fucoidan in the diet of the weanling piglet on performance, selected faecal microbial populations and volatile fatty acid concentrations. *Animal* 4:579–585
- McElroy CR, Kopanitsa L, Helmes R, Fan J, Attard TM, Simister R, van der Burg S, Ladds G, Bailey DS, Gomez LD (2023) Integrated biorefinery approach to valorise *Saccharina latissima* biomass: Combined sustainable processing to produce biologically active fucoxanthin, mannitol, fucoidans and alginates. *Environ Technol Innov* 29:103014
- Mendes M, Navalho S, Ferreira A et al (2022) Algae as food in Europe: An overview of species diversity and their application. *Foods* 11:1871
- Mildenberger J, Stangeland JK, Rebours C (2022) Antioxidative activities, phenolic compounds and marine food allergens in the macroalgae *Saccharina latissima* produced in integrated multi-trophic aquaculture systems. *Aquaculture* 546:737386
- Mols-Mortensen A, Ortind EÁG, Jacobsen C, Holdt SL (2017) Variation in growth, yield and protein concentration in *Saccharina latissima* (Laminariales, Phaeophyceae) cultivated with different wave and current exposures in the Faroe Islands. *J Appl Phycol* 29:2277–2286
- Monteiro JP, Melo T, Skjermo J, Forbord S, Broch OJ, Domingues P, Calado R, Domingues MR (2021) Effect of harvesting month and proximity to fish farm sea cages on the lipid profile of cultivated *Saccharina latissima*. *Algal Res* 54:102201
- Monteiro JP, Rey F, Melo T, Moreira ASP, Arbona JF, Skjermo J, Forbord S, Funderud J, Raposo D, Kerrison PD, Perrineau MM, Gachon C, Domingues P, Calado R, Domingues MR (2020) The unique lipidomic signatures of *Saccharina latissima* can be used to pinpoint their geographic origin. *Biomolecules* 10:107
- Mooney KM, Beatty GE, Elsäber B, Follis ES, Kregting L, O’Connor NE, Riddell GE, Provan J (2018) Hierarchical structuring of genetic variation at differing geographic scales in the cultivated sugar kelp *Saccharina latissima*. *Mar Environ Res* 142:108–115
- Moreira ASP, Gaspar D, Ferreira SS, Correia A, Vilanova M, Perrineau MM, Kerrison PD, Gachon CMM, Domingues MR, Coimbra MA, Coreta-Gomes FM, Nunes C (2023) Water-soluble *Saccharina latissima* polysaccharides and relation of their structural characteristics with *in vitro* immunostimulatory and hypocholesterolemic activities. *Mar Drugs* 21:183
- Mouritsen OG (2017) Those tasty weeds. *J Appl Phycol* 29:2159–2164
- Naylor RL, Hardy RW, Buschmann AH, Bush SR, Cao L, Klingler DH, Little DC, Lubchenco J, Shumway SE, Troell M (2021) A 20-year retrospective review of global aquaculture. *Nature* 591:551–563
- Neiva J, Paulino C, Nielsen MM, Krause-Jensen D, Saunders GW, Assis J, Bárbara I, Tamigneaux É, Gouveia L, Aires T, Marbà N, Bruhn A, Pearson GA, Serrão EA (2018) Glacial vicariance drives phylogeographic diversification in the amphi-boreal kelp *Saccharina latissima*. *Sci Rep* 8:1112
- Nellemann C, Corcoran E (2009) Blue carbon: The role of healthy oceans in binding carbon. GRID-Arendal, Arendal, Norway
- Neto RT, Marçal C, Queirós AS, Abreu H, Silva AMS, Cardoso SM (2018) Screening of *Ulva rigida*, *Gracilaria* sp., *Fucus vesiculosus* and *Saccharina latissima* as functional ingredients. *Int J Mol Sci* 19:2987.
- Nguyen TT, Mikkelsen MD, Tran VHN, Trang VTD, Rhein-Knudsen N, Holck J, Rasin AB, Cao HTT, Van TTT, Meyer AS (2020) Enzyme-assisted fucoidan extraction from brown macroalgae *Fucus distichus* subsp. *evanescens* and *Saccharina latissima*. *Mar Drugs* 18:296.
- Nielsen CW, Holdt SL, Sloth JJ, Marinho GS, Sæther M, Funderud J, Rustad T (2020) Reducing the high iodine content of *Saccharina latissima* and improving the profile of other valuable compounds by water blanching. *Foods* 9:569
- Nielsen MM, Krause-Jensen D, Olesen B, Thinggaard R, Christensen PB, Bruhn A (2014) Growth dynamics of *Saccharina latissima* (Laminariales, Phaeophyceae) in Aarhus Bay, Denmark, and along the species’ distribution range. *Mar Biol* 161:2011–2022
- Nielsen MM, Kumar JP, Soler-Vila A, Johnson MP, Bruhn A (2016a) Early stage growth responses of *Saccharina latissima* spores and gametophytes. Part I: Inclusion of different phosphorus regimes. *J Appl Phycol* 28:387–393
- Nielsen MM, Manns D, D’Este M, Krause-Jensen D, Rasmussen MB, Larsen MM, Alvarado-Morales M, Angelidaki I, Bruhn A (2016b) Variation in biochemical composition of *Saccharina latissima* and *Laminaria digitata* along an estuarine salinity gradient in inner Danish waters. *Algal Res* 13:235–245
- Niemi C, Mortensen AM, Rautenberger R, Matsson S, Gorzsás A, Gentili FG (2023) Rapid and accurate determination of protein content in North Atlantic seaweed by NIR and FTIR spectroscopies. *Food Chem* 404:134700
- Nilsson AE, Bergman K, Gomez Barrio LP, Cabral EM, Tiwari BK (2022) Life cycle assessment of a seaweed-based biorefinery concept for production of food, materials, and energy. *Algal Res* 65:102725

- Nøkling-Eide K, Langeng A-M, Åslund A, Aachmann FL, Sletta H, Arlov Ø (2023a) An assessment of physical and chemical conditions in alginate extraction from two cultivated brown algal species in Norway: *Alaria esculenta* and *Saccharina latissima*. *Algal Res* 69:102951
- Nøkling-Eide K, Tan F, Wang S, Zhou Q, Gravidahl M, Langeng A-M, Bulone V, Aachmann FL, Sletta H, Arlov Ø (2023b) Acid preservation of cultivated brown algae *Saccharina latissima* and *Alaria esculenta* and characterization of extracted alginate and cellulose. *Algal Res* 71:103057
- Novoa-Garrido M, Marcos CN, Travieso MDC, Alcaide EM, Larsen M, Weisbjerg MR (2020) Preserving *Porphyra umbilicalis* and *Saccharina latissima* as silages for ruminant feeding. *Animals* 10:1957
- Ometto F, Berg A, Björn A, Safaric L, Svensson BH, Karlsson A, Ejlertsson J (2018) Inclusion of *Saccharina latissima* in conventional anaerobic digestion systems. *Environ Technol* 39:628–639
- Ørberg SB, Duarte CM, Geraldi NR, Sejr MK, Wegeberg S, Hansen JLS, Krause-Jensen D (2023) Prevalent fingerprint of marine macroalgae in arctic surface sediments. *Sci Total Environ* 898:165507
- Osman AI, Fawzy S, Farghali M, El-Azazy M, Elgarahy AM, Fahim RA, Maksoud MIAA, Ajlan AA, Yousry M, Saleem Y, Rooney DW (2022) Biochar for agronomy, animal farming, anaerobic digestion, composting, water treatment, soil remediation, construction, energy storage, and carbon sequestration: A review. *Environ Chem Lett* 20:2385–2485
- Øverland M, Mydland LT, Skrede A (2019) Marine macroalgae as sources of protein and bioactive compounds in feed for monogastric animals. *J Sci Food Agric* 99:13–24
- Papadopoulou E, Vance C, Rozene Vallespin PS, Tsapekos P, Angelidaki I (2023) *Saccharina latissima*, candy-factory waste, and digestate from full-scale biogas plant as alternative carbohydrate and nutrient sources for lactic acid production. *Bioresour Technol* 380:129078
- Pessarrodona A, Franco-Santos RM, Wright LS, Vaderklift MA, Howard J, Pidgeon E, Wernberg T, Filbee-Dexter K (2023) Carbon sequestration and climate change mitigation using macroalgae: A state of knowledge review. *Biol Rev* 98:1945–1971
- Peteiro C, Freire Ó (2009) Effect of outplanting time on commercial cultivation of kelp *Laminaria saccharina* at the southern limit in the Atlantic coast, N.W. Spain. *Chin J Oceanol Limnol* 27:54–60
- Peteiro C, Freire Ó (2011) Offshore cultivation methods affects blade features of the edible seaweed *Saccharina latissima* in a bay of Galicia, Northwest Spain. *Russ J Mar Biol* 37:319–323
- Peteiro C, Freire Ó (2013) Biomass yield and morphological features of the seaweed *Saccharina latissima* cultivated at two different sites in a coastal bay in the Atlantic coast of Spain. *J Appl Phycol* 25:205–213
- Peteiro C, Sánchez N, Dueñas-Liaño C, Martínez B (2014) Open-sea cultivation by transplanting young fronds of the kelp *Saccharina latissima*. *J Appl Phycol* 26:519–528
- Peteiro C, Sánchez N, Martínez B (2016) Mariculture of the Asian kelp *Undaria pinnatifida* and the native kelp *Saccharina latissima* along the Atlantic coast of Southern Europe: An overview. *Algal Res* 15:9–23
- Pétursdóttir ÁH, Blagden J, Gunnarsson K, Raab A, Stengel DB, Feldmann J, Gunnlaugsdóttir H (2019) Arsenolipids are not uniformly distributed within two brown macroalgal species *Saccharina latissima* and *Alaria esculenta*. *Anal Bioanal Chem* 411:4973–4985
- Poo K-M, Son E-B, Chang J-S, Ren X, Choi Y-J, Chae K-J (2018) Biochars derived from wasted marine macro-algae (*Saccharina japonica* and *Sargassum fusiforme*) and their potential for heavy metal removal in aqueous solution. *J Environ Manage* 206:364–372
- Qin N, Pétursdóttir ÁH, Humphries DJ, Desnica N, Newton EE, Vanhatalo A, Halmemies-Beauchet-Filleau A, Bell L, Givens DI, Juniper DT, Gunnlaugsdóttir H, Stergiadis S (2023) Mineral concentrations in milk from cows fed seaweed (*Saccharina latissima*) under different basal protein supplementation. *Food Chem* 403:134315
- Rahikainen M, Tuomasjukka S, Yang B (2020) Macroalgae as food and feed ingredients in the Baltic Sea region – Regulation by the European Union. Report of the Interreg project Growing Algae Sustainably in the Baltic Sea, Finland.
- Raymond AET, Stekoll MS (2021) Conditions for staggering and delaying outplantings of the kelps *Saccharina latissima* and *Alaria marginata* for mariculture. *J World Aquac Soc* 52:1135–1157
- Redmond S, Green L, Yarish C, Kim J, Neefus C (2014) New England seaweed culture handbook: Nursery systems. Connecticut Sea Grant CTSG-14-01. 92 pp. <http://seagrant.uconn.edu/publications/aquaculture/handbook.pdf>; accessed 5 March 2023
- Reid GK, Chopin T, Robinson SMC, Azevedo P, Quinton M, Belvea E (2013) Weight ratios of the kelps, *Alaria esculenta* and *Saccharina latissima*, required to sequester dissolved inorganic nutrients and supply oxygen for Atlantic salmon, *Salmo salar*, in Integrated Multi-Trophic Aquaculture systems. *Aquaculture* 408–409:34–46
- Rey F, Lopes D, Maciel E, Monteiro J, Skjermo J, Funderud J, Raposo D, Domingues P, Calado R, Domingues MR (2019) Polar lipid profile of *Saccharina latissima*, a functional food from the sea. *Algal Res* 39:101473
- Rhein-Knudsen N, Reyes-Weiss D, Horn SJ (2023) Extraction of high purity fucoidans from brown seaweeds using cellulases and alginate lyases. *Int J Biol Macromol* 229:199–209
- Ribeiro PA, Næss T, Dahle G, Asplin L, Meland K, Fredriksen S, Sjøtun K (2022) Going with the flow – Population genetics of the kelp *Saccharina latissima* (Phaeophyceae, Laminariales). *Front Mar Sci* 9:876420
- Ricart AM, Krause-Jensen D, Hancke K, Price NN, Masque P, Durte CM (2022) Sinking seaweed in the deep ocean for carbon neutrality is ahead of science and beyond the ethics. *Environ Res Lett* 17:081003
- Roberts DA, Paul NA, Dworjanyn SA, Bird MI, de Nys R (2015) Biochar from commercially cultivated seaweed for soil amelioration. *Sci Rep* 5:9665
- Roleda MY, Marfaing H, Desnica N, Jónsdóttir R, Skjermo J, Rebours C, Nitschke U (2019) Variations in polyphenol and heavy metal contents of wild-harvested and cultivated seaweed bulk biomass: Health risk assessment and implication for food applications. *Food Control* 95:121–134
- Roleda MY, Skjermo J, Marfaing H, Jónsdóttir R, Rebours C, Gietl A, Stengel DB, Nitschke U (2018) Iodine content in bulk biomass of wild-harvested and cultivated edible seaweeds: Inherent variations determine species-specific daily allowable consumption. *Food Chem* 254:333–339
- Rolin C, Inkster R, Laing J, McEvoy L (2017) Regrowth and biofouling in two species of cultivated kelp in the Shetland Islands, UK. *J Appl Phycol* 29:2351–2361
- Rose DJ, Hemery LG (2023) Methods for measuring carbon dioxide uptake and permanence: Review and implications for macroalgae aquaculture. *J Mar Sci Eng* 11:175
- Rugiu L, Hargrave MS, Enge S, Sterner M, Nylund GM, Pavia H (2021) Kelp in IMTAs: Small variations in inorganic nitrogen concentrations drive different physiological responses of *Saccharina latissima*. *J Appl Phycol* 33:1021–1034
- Samarasinghe MB, Sehested J, Weisbjerg MR, van der Heide ME, Nørgaard JV, Vestergaard M, Hernández-Castellano LE (2021a) Feeding milk supplemented with *Ulva* sp., *Ascophyllum nodosum*, or *Saccharina latissima* to preweaning dairy

- calves: Effects on growth, gut microbiota, gut histomorphology, and short-chain fatty acids in digesta. *J Dairy Sci* 104:12117–12126
- Samarasinghe MB, van der Heide ME, Weisbjerg MR, Sehested J, Sloth JJ, Vestergaard M, Norgaard JV, Hernández-Castellano LE (2021b) A descriptive chemical analysis of seaweeds, *Ulva* sp., *Saccharina latissima* and *Ascophyllum nodosum* harvested from Danish and Icelandic waters. *Anim Feed Sci Technol* 278:115005
- Sandbakken IS, Sæther M, Funderud J, Aasen IM (2018) Acid preservation of *Saccharina latissima* for application as a carbon source for fermentation to biofuels and chemicals. *J Appl Phycol* 30:3581–3588
- Sanderson JC, Dring MJ, Davidson K, Kelly MS (2012) Culture, yield and bioremediation potential of *Palmaria palmata* (Linnaeus) Weber & Mohr and *Saccharina latissima* (Linnaeus) C.E. Lane, C. Mayes, Druhl & G.W. Saunders adjacent to fish farm cages in northwest Scotland. *Aquaculture* 354–355:128–135
- Sappati PK, Nayak B, Van Walsum GP (2017) Effect of glass transition on the shrinkage of sugar kelp (*Saccharina latissima*) during hot air convective drying. *J Food Eng* 210:50–61
- Sappati PK, Nayak B, VanWalsum GP, Mulrey OT (2019) Combined effects of seasonal variation and drying methods on the physicochemical properties and antioxidant activity of sugar kelp (*Saccharina latissima*). *J Appl Phycol* 31:1311–1332
- Sardari RRR, Prothmann J, Gregersen O, Turner C, Nordberg Karlsson E (2021) Identification of phlorotannins in the brown algae, *Saccharina latissima* and *Ascophyllum nodosum* by ultra-high-performance liquid chromatography coupled to high-resolution tandem mass spectrometry. *Molecules* 26:43
- Scheschonk L, Bischof K, Kopp MEL, Jueterbock A (2023) Differences by origin in methylome suggest eco-phenotypes in the kelp *Saccharina latissima*. *Evol Appl* 16:262–278
- Schiener P, Atack T, Wareing R, Kelly MS, Hughes AD (2016) The by-products from marine biofuels as a feed source for the aquaculture industry: A novel example of the biorefinery approach. *Biomass Convers Biorefinery* 6:281–287
- Schiener P, Black KD, Stanley MS, Green DH (2015) The seasonal variation in the chemical composition of the kelp species *Laminaria digitata*, *Laminaria hyperborea*, *Saccharina latissima* and *Alaria esculenta*. *J Appl Phycol* 27:363–373
- Schiener P, Zhao S, Theodoridou K, Carey M, Mooney-McAuley K, Greenwell C (2017) The nutritional aspects of bio-refined *Saccharina latissima*, *Ascophyllum nodosum* and *Palmaria palmata*. *Biomass Convers Biorefinery* 7:221–235
- Schneider T, Ehrig K, Liewert I, Alban S (2015) Interference with the CXCL12/CXCR4 axis as potential antitumor strategy: superiority of a sulfated galactofucan from the brown alga *Saccharina latissima* and fucoidan over heparins. *Glycobiology* 25:812–824
- Schultze-Jena A, Vroon RC, Macleod AKA, Hreggviðsson GÓ, Adalsteinsson BT, Engelen-Smit NPE, de Vrije T, Budde MAW, van der Wal H, López-Contreras AM, Boon MA (2022) Production of acetone, butanol, and ethanol by fermentation of *Saccharina latissima*: Cultivation, enzymatic hydrolysis, inhibitor removal, and fermentation. *Algal Res* 62:102618
- Seghetta M, Hou X, Bastianoni S, Bjerre A-B, Thomsen M (2016a) Life cycle assessment of macroalgal biorefinery for the production of ethanol, proteins and fertilizers – A step towards a regenerative bioeconomy. *J Clean Prod* 137:1158–1169
- Seghetta M, Tørring D, Bruhn A, Thomsen M (2016b) Bioextraction potential of seaweed in Denmark – An instrument for circular nutrient management. *Sci Total Environ* 563–564:513–529
- Sewu DD, Woo SH, Lee DS (2021) Biochar from the co-pyrolysis of *Saccharina japonica* and goethite as an adsorbent for basic blue 41 removal from aqueous solution. *Sci Total Environ* 797:149160
- Shannon E, Abu-Ghannam N (2017) Optimisation of fucoxanthin extraction from Irish seaweeds by response surface methodology. *J Appl Phycol* 29:1027–1036
- Sharma S, Neves L, Funderud J, Mydland LT, Øverland M, Horn SJ (2018) Seasonal and depth variations in the chemical composition of cultivated *Saccharina latissima*. *Algal Res* 32:107–112
- Shea R, Chopin T (2007) Effects of germanium dioxide, an inhibitor of diatom growth, on the microscopic laboratory cultivation stage of the kelp, *Laminaria saccharina*. *J Appl Phycol* 19:27–32
- Silva MP, Badruddin IJ, Tonon T, Rahatekar S, Gomez LD (2023) Environmentally benign alginate extraction and fibres spinning from different European brown algae species. *Int J Biol Macromol* 226:434–442
- Slegers PM, Helmes RJK, Draisma M, Broekema R, Vlottes M, van den Burg SWK (2021) Environmental impact and nutritional value of food products using the seaweed *Saccharina latissima*. *J Clean Prod* 319:128689
- Smale DA, Burrows MT, Moore P, O'Connor N, Hawkins SJ (2013) Threats and knowledge gaps for ecosystem services provided by kelp forests: A northeast Atlantic perspective. *Ecol Evol* 3:4016–4038
- Solvang T, Bale ES, Broch OJ, Handå A, Alver MO (2021) Automation concepts for industrial-scale production of seaweed. *Front Mar Sci* 8:613093
- Sørensen JS, Madsen SK, Bang-Berthelsen CH, Hansen LT (2021) Quality and safety aspects in fermentation of winged kelp (*Alaria esculenta*) and sugar kelp (*Saccharina latissima*) by the natural microbiota with or without addition of a *Lactiplantibacillus plantarum* starter culture. *Food Res Int* 150:110800
- Standal IB, Slizyte R, Mozuraityte R, Kirkholt EM, Shumilina E, Dikiy A (2024) Quality changes of cultivated *Saccharina latissima* as influenced by preservation method during short term storage. *J Aquat Food Prod Technol* 33:1–18.
- Stedt K, Trigo JP, Steinhagen S, Nylund GM, Forghani B, Pavia H, Undeland I (2022) Cultivation of seaweeds in food production process waters: Evaluation of growth and crude protein content. *Algal Res* 63:102647
- Stefaniak-Vidarsson MM, Gudjónsdóttir M, Marteinsdóttir G, Omarsdóttir S, Bravo E, Sigurjonsson OE, Kristbergsson K (2019) Determination of bioactive properties of food grade extracts from Icelandic edible brown seaweed sugar kelp (*Saccharina latissima*) with in vitro human cell cultures (THP-1). *Funct Foods Health Dis* 9:1–15
- Stekoll MS, Peeples TN, Raymond AET (2021) Mariculture research of *Macrocystis pyrifera* and *Saccharina latissima* in Southeast Alaska. *J World Aquac Soc* 52:1031–1046
- Stengel DB, Connan S, Popper ZA (2011) Algal chemodiversity and bioactivity: Sources of natural variability and implications for commercial application. *Biotechnol Adv* 29:483–501
- Sterner M, Edlund U (2016) Multicomponent fractionation of *Saccharina latissima* brown algae using chelating salt solutions. *J Appl Phycol* 28:2561–2574
- Sterner M, Gröndahl F (2021) Extraction of laminarin from *Saccharina latissima* seaweed using cross-flow filtration. *J Appl Phycol* 33:1825–1844
- Stévant P, Indergård E, Ólafsdóttir A, Marfaing H, Larssen WE, Roleda MY, Rustad T, Slizyte R, Nordtvedt TS (2018a) Effects of drying on the nutrient content and physico-chemical and sensory characteristics of the edible kelp *Saccharina latissima*. *J Appl Phycol* 30:2587–2599
- Stévant P, Marfaing H, Duinker A, Fleurence J, Rustad T, Sandbakken I, Chapman A (2018b) Biomass soaking treatments to reduce potentially undesirable compounds in the edible seaweeds sugar

- kelp (*Saccharina latissima*) and winged kelp (*Alaria esculenta*) and health risk estimation for human consumption. *J Appl Phycol* 30:2047–2060
- Stévant P, Marfaing H, Rustad T, Sandbakken I, Fleurence J, Chapman A (2017a) Nutritional value of the kelps *Alaria esculenta* and *Saccharina latissima* and effects of short-term storage on biomass quality. *J Appl Phycol* 29:2417–2426
- Stévant P, Rebours C, Chapman A (2017b) Seaweed aquaculture in Norway: Recent industrial developments and future perspectives. *Aquac Int* 25:1373–1390
- St-Gelais AT, Fredriksson DW, Dewhurst T, Miller-Hope ZS, Costa-Pierce BA, Johndrow K (2022) Engineering a low-cost kelp aquaculture system for community-scale seaweed farming at nearshore exposed sites via user-focused design process. *Front Sustain Food Syst* 6:848035
- Strong-Wright J, Taylor JR (2022) Modeling the growth potential of the kelp *Saccharina latissima* in the North Atlantic. *Front Mar Sci* 8:793977
- Su L, Pang SJ, Shan TF, Li X (2017) Large-scale hatchery of the kelp *Saccharina japonica*: A case study experience at Lvshun in northern China. *J Appl Phycol* 29:3003–3013
- Sun J, Norouzi O, Mašek O (2022) A state-of-the-art review on algae pyrolysis for bioenergy and biochar production. *Bioresour Technol* 346:126258
- Taelman SE, Champenois J, Edwards MD, De Meester S, Dewulf J (2015) Comparative environmental life cycle assessment of two seaweed cultivation systems in North West Europe with a focus on quantifying sea surface occupation. *Algal Res* 11:173–183
- Theodorou I, Opsahl-Sorteberg H-G, Charrier B (2021) Preparation of zygotes and embryos of the kelp *Saccharina latissima* for cell biology approaches. *BIO-Protoc* 11:e4132.
- Thomas J-B, Sodr e Ribeiro M, Potting J, Cervin G, Nylund GM, Olsson J, Albers E, Undeland I, Pavia H, Gr ndahl F (2021) A comparative environmental life cycle assessment of hatchery, cultivation, and preservation of the kelp *Saccharina latissima*. *ICES J Mar Sci* 78:451–467
- Thomas J-B, Sterner M, Nylund GM, Albers E, Edlund U, Undeland I, Welander U, Gr ndahl F, Pavia H (2022) The effects of cultivation deployment- and harvest-timing, location and depth on growth and composition of *Saccharina latissima* at the Swedish west coast. *Aquaculture* 559:738443
- Thorsteinsson M, Weisbjerg MR, Lund P, Battelli M, Chass e  , Bruhn A, Nielsen MO (2023) Effects of seasonal and interspecies differences in macroalgae procured from temperate seas on the Northern hemisphere on in vitro methane mitigating properties and rumen degradability. *Algal Res* 73:103139
- Top S, Vandoorne B, Pauwels E, Perneel M, Van Labeke M-C, Steppe K (2023) Plant sensors untangle the water-use and growth effects of selected seaweed-derived biostimulants on drought-stressed tomato plants (*Solanum lycopersicum*). *J Plant Growth Regul* 42:5615–5627
- Trigo JP, Stedt K, Schmidt AEM, Kollander B, Edlund U, Nylund G, Pavia H, Abdollahi M, Undeland I, (2023) Mild blanching prior to pH-shift processing of *Saccharina latissima* retains protein extraction yields and amino acid levels of extracts while minimizing iodine content. *Food Chem* 404:134576
- Troell M, Henriksson PJG, Buschmann AH, Chopin T, Quaha S (2023) Farming the ocean – Seaweeds as a quick fix for the climate? *Rev Fish Sci Aquac* 31:285–295
- Troell M, Joyce A, Chopin T, Neori A, Buschmann AH, Fang J-G (2009) Ecological engineering in aquaculture – Potential for integrated multi-trophic aquaculture (IMTA) in marine offshore systems. *Aquaculture* 297:1–9
- Trumbo P, Yates AA, Schlicker S, Poos M (2001) Dietary reference intakes: Vitamin A, vitamin K, arsenic, boron, chromium, copper, iodine, iron, manganese, molybdenum, nickel, silicon, vanadium, and zinc. *J Am Diet Assoc* 101:294–301
- Umanzor S, Li Y, Bailey D, Augyte S, Hoang M, Marty-Rivera M, Jannink J-L, Yarish C, Lindell S (2021) Comparative analysis of morphometric traits of farmed sugar kelp and skinny kelp, *Saccharina* spp., strains from the Northwest Atlantic. *J World Aquac Soc* 52:1059–1068
- Umanzor S, Shin S, Marty-Rivera M, Augyte S, Yarish C, Kim JK (2019) Preliminary assessment on the effects of the commercial seaweed extract, AMPEP, on growth and thermal tolerance of the kelp *Saccharina* spp. from the Northwest Atlantic. *J Appl Phycol* 31:3823–3829
- Umanzor S, Shin S, Yarish C, Augyte S, Kim JK (2020) Exploratory evaluation of the effects of Kelpak  seaweed extract on cultivated kelp *Saccharina* spp. exposed to sublethal and lethal temperatures. *J World Aquac Soc* 51:960–969
- Umanzor S, Stephens T (2023) Nitrogen and carbon removal capacity by farmed kelp *Alaria marginata* and *Saccharina latissima* varies by species. *Aquac J* 3:1–6
- Van Den Burg SWK, Dagevos H, Helmes RJK (2021a) Towards sustainable European seaweed value chains: A triple P perspective. *ICES J Mar Sci* 78:443–450
- Van Den Burg SWK, Selnes T, Alves L, Giesbers E, Daniel A (2021b) Prospects for upgrading by the European kelp sector. *J Appl Phycol* 33:557–566
- Van Den Burg SWK, Van Duijn AP, Bartelings H, van Krimpen MM, Poelman M (2016) The economic feasibility of seaweed production in the North Sea. *Aquac Econ Manag* 20:235–252
- Van Der Meer J, Callier M, Fabi G, van Hoof L, Nielsen JR, Raicevich S (2023) The carrying capacity of the seas and oceans for future sustainable food production: Current scientific knowledge gaps. *Food Energy Secur* 12:e464
- Vasconcelos MMM, Marson GV, Rioux LE, Tamigneaux E, Turgeon SL, Beaulieu L (2023) *In vitro* bioaccessibility of proteins and bioactive compounds of wild and cultivated seaweeds from the Gulf of Saint Lawrence. *Mar Drugs* 21:102
- Venkatesan J, Lowe B, Anil S, Manivasagan P, Al Kheraif AA, Kang K-H, Kim S-K (2015) Seaweed polysaccharides and their potential biomedical applications. *Starch - Starke* 67:381–390
- Venolia CT, Lavaud R, Green-Gavrielidis LA, Thornber C, Humphries AT (2020) Modeling the growth of sugar kelp (*Saccharina latissima*) in aquaculture systems using dynamic energy budget theory. *Ecol Model* 430:109151
- Verdegem M, Buschmann AH, Latt UW, Dalsgaard AJT, Lovatelli A (2023) The contribution of aquaculture systems to global aquaculture production. *J World Aquac Soc* 54:206–250
- Vilg JV, Nylund GM, Werner T, Qvirist L, Mayers JJ, Pavia H, Undeland I, Albers E (2015) Seasonal and spatial variation in biochemical composition of *Saccharina latissima* during a potential harvesting season for Western Sweden. *Bot Mar* 58:435–447.
- Visch W, Kononets M, Hall POJ, Nylund GM, Pavia H (2020a) Environmental impact of kelp (*Saccharina latissima*) aquaculture. *Mar Pollut Bull* 155:110962
- Visch W, Larsson AI,  berg P, Toth GB (2023) Adherence of kelp (*Saccharina latissima*) gametophytes on ropes with different binder treatments and flow regimes. *J Appl Phycol* 35:195–200
- Visch W, Nylund GM, Pavia H (2020b) Growth and biofouling in kelp aquaculture (*Saccharina latissima*): The effect of location and wave exposure. *J Appl Phycol* 32:3199–3209
- Visch W, Rad-Men endez C, Nylund GM, Pavia H, Ryan MJ, Day J (2019) Underpinning the development of seaweed biotechnology: Cryopreservation of brown algae (*Saccharina latissima*) gametophytes. *Biopreservation Biobanking* 17:378–386



- Vivekanand V, Eijssink VGH, Horn SJ (2012) Biogas production from the brown seaweed *Saccharina latissima*: Thermal pretreatment and codigestion with wheat straw. *J Appl Phycol* 24:1295–1301
- Vorse JG, Moody CT, Massoia LC, Perry JJ, Burkholder KM, Byron CJ (2023) Effect of post-harvest processing methods on the microbial safety of edible seaweed. *J Appl Phycol* 35:1331–1346
- Wang X, Blikra MJ, Evensen TH, Skipnes D, James P (2022) Effects of site, depth and sori origin on the growth and minerals composition of cultivated *Saccharina latissima* (Phaeophyceae) in the north of Norway. *J Appl Phycol* 34:529–541
- Wang X, Broch OJ, Forbord S, Handá A, Skjermo J, Reitan KI, Vladstein O, Olsen Y, (2014) Assimilation of inorganic nutrients from salmon (*Salmo salar*) farming by the macroalgae (*Saccharina latissima*) in an exposed coastal environment: Implications for integrated multi-trophic aquaculture. *J Appl Phycol* 26:1869–1878
- Wijesinghe WAJP, Jeon Y-J (2012) Biological activities and potential industrial applications of fucose rich sulfated polysaccharides and fucoidans isolated from brown seaweeds: A review. *Carbohydr Polym* 88:13–20
- Wu J, Keller DP, Oschlies A (2023) Carbon dioxide removal via macroalgae open-ocean mariculture and sinking: An Earth system modeling study. *Earth Syst Dyn* 14:185–221
- Yang X, Jiang D, Cheng X, Yuan C, Wang S, He Z, Esakkimuthu S (2022) Adsorption properties of seaweed-based biochar with the greenhouse gases (CO<sub>2</sub>, CH<sub>4</sub>, N<sub>2</sub>O) through density functional theory (DFT). *Biomass Bioenergy* 163:106519
- Yen Y, Weisbjerg MR, Rautenberger R, Fečaniňová A, Novoa-Garrido M (2022) Improving fermentation of *Saccharina latissima* and *Alaria esculenta* silages with additives for preserving biomass and antioxidants. *J Appl Phycol* 34:625–636
- Young CS, Sylvers LH, Tomasetti SJ, Lundstrom A, Schenone C, Doall MH, Gobler CJ (2022) Kelp (*Saccharina latissima*) mitigates coastal ocean acidification and increases the growth of north atlantic bivalves in lab experiments and on an oyster farm. *Front Mar Sci* 9:881254
- Zargarzadeh M, Amaral AJR, Custódio CA, Mano JF (2020) Biomedical applications of laminarin. *Carbohydr Polym* 232:115774
- Zeraatkar AK, Ahmadzadeh H, Talebi AF, Moheimani NR, McHenry MP (2016) Potential use of algae for heavy metal bioremediation, a critical review. *J Environ Manage* 181:817–831
- Zhang X, Bolderskov T, Bruhn A, Thomsen M (2022) Blue growth and bioextraction potentials of Danish *Saccharina latissima* aquaculture – A model of eco-industrial production systems mitigating marine eutrophication and climate change. *Algal Res* 64:102686
- Zhang X, Thomsen M (2019) Biomolecular composition and revenue explained by interactions between extrinsic factors and endogenous rhythms of *Saccharina latissima*. *Mar Drugs* 17:107
- Zhang X, Thomsen M (2021) Techno-economic and environmental assessment of novel biorefinery designs for sequential extraction of high-value biomolecules from brown macroalgae *Laminaria digitata*, *Fucus vesiculosus*, and *Saccharina latissima*. *Algal Res* 60:102499
- Zhu G, Ebbing A, Bouma TJ, Timmermans KR (2021a) Morphological and physiological plasticity of *Saccharina latissima* (Phaeophyceae) in response to different hydrodynamic conditions and nutrient availability. *J Appl Phycol* 33:2471–2483
- Zhu L, Lei J, Huguenard K, Fredriksson DW (2021b) Wave attenuation by suspended canopies with cultivated kelp (*Saccharina latissima*). *Coast Eng* 168:103947
- Zhu Q, Zhu Z, Nauta R, Timmermans KR, Jiang L, Cai Y, Yang Z, Gerkema T (2021c) Impact of off-bottom seaweed cultivation on turbulent variation in the hydrodynamic environment: A flume experiment study with mimic and natural *Saccharina latissima* thalli. *Sci Total Environ* 797:149048

**Publisher's Note** Springer Nature remains neutral with regard to jurisdictional claims in published maps and institutional affiliations.