

5-1-2008

# Collagen 1 $\alpha 1$ is Indirectly Activated by Lymphocyte Enhancer-Binding Factor 1 (Lef1) and Negatively Regulates Osteoblast Maturation

Rachel A. Kahler  
*University of Minnesota*

Sorcha M.C. Yingst  
*Boise State University*

Luke H. Hoepfner  
*University of Minnesota*

Eric D. Jensen  
*University of Minnesota*

David Krawczak  
*University of Minnesota*

*See next page for additional authors*



This is an author-produced, peer-reviewed version of this article. © 2009, Elsevier. Licensed under the Creative Commons Attribution-NonCommercial-NoDerivatives 4.0 International License (<https://creativecommons.org/licenses/by-nc-nd/4.0/>). The final, definitive version of this document can be found online at *Matrix Biology*, doi: 10.1016/j.matbio.2008.01.002

---

**Authors**

Rachel A. Kahler, Sorchá M.C. Yingst, Luke H. Hoepfner, Eric D. Jensen, David Krawczak, Julia T. Oxford, and Jennifer J. Westendorf

# Collagen 11a1 is Indirectly Activated by Lymphocyte Enhancer-binding Factor 1 (Lef1) and Negatively Regulates Osteoblast Maturation

Rachel A. Kahler<sup>1</sup>, Sorcha M.C. Yingst<sup>2</sup>, Luke H. Hoepfner<sup>1</sup>, Eric D. Jensen<sup>3</sup>, David Krawczak<sup>4</sup>, Julia T. Oxford<sup>2</sup> and Jennifer J. Westendorf<sup>5</sup>

<sup>1</sup>Graduate Program in Microbiology, Immunology and Cancer Biology, University of Minnesota, Minneapolis, MN

<sup>2</sup> Department of Biology, Musculoskeletal Research Center, and Biomolecular Research Center, Boise State University, Boise, ID 83725

<sup>3</sup>Department of Orthopaedic Surgery, University of Minnesota, Minneapolis, MN,

<sup>4</sup>Cancer Center, University of Minnesota, Minneapolis, MN

<sup>5</sup>Departments of Orthopedic Surgery and Biochemistry & Molecular Biology, Mayo Clinic, Rochester, MN 55905

Address correspondence to:

Jennifer J. Westendorf, Ph.D.

Mayo Clinic

200 First Street SW

Rochester, MN 55905

Phone: 507-538-5651; Fax: 507-284-5075

Email: westendorf.jennifer@mayo.edu

Keywords: Lef1, Wnt, beta-catenin, collagen 11a1, osteoblasts

## Abstract

Alpha 1 (XI) collagen (Col11a1) is essential for normal skeletal development. Mutations in Col11a1 cause Marshall and Stickler syndromes, characterized by craniofacial abnormalities, nearsightedness and hearing abnormalities. Despite its link to human diseases, few studies have characterized the factors that control Col11a1 transcription. We previously identified Col11a1 as a differentially expressed gene in Lef1-suppressed MC3T3 preosteoblasts. Here we report that Lef1 activates the Col11a1 promoter. This activation is dependent upon the DNA binding domain of Lef1, but does not require the  $\beta$ -catenin interaction domain, suggesting that it is not responsive to Wnt signals. Targeted deletion of Col11a1 with an antisense morpholino accelerated osteoblastic differentiation and mineralization in C2C12 cells, similar to what was observed in Lef1-suppressed MC3T3 cells. Moreover incubation with a purified Col11a1 N-terminal fragment, V1B, prevented alkaline phosphatase expression in MC3T3 and C2C12 cells. These results suggest that Lef1 is an activator of the Col11a1 promoter and that Col11a1 suppresses terminal osteoblast differentiation.

## 1. Introduction

Extracellular matrix proteins are essential for the normal formation and function of all tissues (Comper, 1996). Skeletal tissue is composed of mineral and organic components in combination with various cell types (Gokhale et al., 2001). Collagens comprise a large percentage of the organic extracellular matrix in bone. Type I collagen is the

major scaffolding protein for mineralized bone and constitutes 90% of the organic matrix (Robey and Boskey, 2003). Other collagens, however, are also important for proper bone formation. Minor collagens, such as types III, V, VI and XI collagen, control fibril growth, diameter and assembly of major collagens (Gelse et al., 2003; Robey and Boskey, 2003).

Type XI collagen is a minor fibril-forming collagen. It is a heterotrimer of alpha 1 (XI) collagen (Col11a1), alpha 2 (XI) collagen (Col11a2) and alpha 1 (II) collagen (Col2a1), except in the vitreous of the eye where Col11a2 is replaced with alpha 1 (V) collagen (Col5a1) (Fichard et al., 1995). Type XI collagen assists in proper type II collagen fibril formation (Gelse et al., 2003). Col11a1 is mainly expressed in articular cartilage and the vitreous fluid of the eye (Lui et al., 1995; Yoshioka et al., 1995; Iyama et al., 2001; So et al., 2001). However, Col11a1 expression is detectable in many other human fetal tissues including the bone (Lui et al., 1995). In mice lacking Col11a1 (Cho mice), chondrocytes fail to fully differentiate causing a chondrodystrophic phenotype. Cho mice also have enhanced long bone mineralization, thicker trabeculae, and increased bone mass at the diaphysis (Seegmiller et al., 1971). Observations from the Cho mice suggest that Col11a1 is essential for skeletal morphogenesis because it controls type II collagen fibrillogenesis, chondrocyte maturation and bone mineralization (Seegmiller et al., 1971; Li et al., 1995).

Mutations in Col11a1 cause Marshall and type II Stickler syndromes (Griffith et al., 1998; Annunen et al., 1999). Marshall syndrome is an autosomal dominant inherited disease characterized by short stature, nearsightedness, hearing loss, flattened facial features, thickened calvarium and intercranial ossifications. Type II Stickler syndrome patients have similar symptoms but are of near normal height and exhibit no bony overgrowths (Snead and Yates, 1999). Both syndromes occasionally present with cleft palate and patients frequently develop early osteoarthritis (Olsen, 1995; Snead and Yates, 1999; Rodriguez et al., 2004; Jakkula et al., 2005). Whether Marshall and Stickler syndromes are variants of the same disease or separate syndromes is controversial, but it is apparent that they are very similar and many patients display symptoms of both diseases (Winter et al., 1983; Ayme and Preus, 1984; Stratton et al., 1991; Annunen et al., 1999).

Lef1 is one of four nuclear high mobility group (HMG) proteins that mediate gene transcription in response to canonical Wnt signaling, which is an important regulator of skeletal development and bone homeostasis (reviewed in (Westendorf et al., 2004)). Lef1 is essential for mesenchymal/epithelial interactions that occur during the development of tissues such as mammary glands, teeth and whiskers (van Genderen et al., 1994). Lef1 null mice are smaller than wild type mice and die shortly after birth. A mouse model expressing a mutant form of Lef1 lacking the HMG domain (Lef1-βgal) displays several skeletal abnormalities, mostly associated with skeletal patterning (Galceran et al., 2004). Recently, we recently discovered that Lef1 binds to Runx2 through the Lef1 HMG domain and represses Runx2-induced transcription of the osteocalcin promoter. This repression is further enhanced by mimicking canonical Wnt signaling with stabilized β-catenin (Kahler and Westendorf, 2003). We previously showed that in vitro, osteoblasts with reduced Lef1 expression mineralize at an accelerated rate while osteoblasts over expressing Lef1 do not mineralize (Kahler et al., 2006). These data suggest that Lef1 may have an important role in normal osteoblast maturation.

While we reported a role for Lef1 in osteoblast maturation, the exact mechanism by which Lef1 affects osteoblast differentiation is unknown. In this report, we describe a role for Lef1 in the expression of Col11a1. We demonstrate that Lef1-suppressed preosteoblasts express Col11a1 mRNA at reduced levels compared to control cells. An antisense morpholino that inhibits Col11a1 translation enhances differentiation of C2C12 cells along the osteoblast lineage in a manner similar to Lef1-suppression (Kahler et al., 2006). Moreover, incubation with an N-terminal fragment of Col11a1 slows alkaline phosphatase production by pre-osteoblasts. These data suggest that Lef1 is important for Col11a1 expression and Col11a1, in turn, plays a role in controlling osteoblast differentiation and mineralization.

## 2. Results

### 2.1. Lef1-suppressed cells have reduced Col11a1 expression

To identify genes that were differentially regulated as a result of Lef1 suppression, we subjected RNA samples from control (Ffl cells) and Lef1-suppressed (L2) MC3T3 cells to gene chip analysis (Kahler et al., 2006). One group of genes that was consistently and significantly downregulated in Lef1-suppressed osteoblasts was the collagen family.

The gene chip analyses indicated that collagens 3a1, 5a1, 6a2 and 11a1 were all downregulated 1.5-fold or more at a significance of  $p \leq 0.005$  [Fig. 1A and (Kahler et al., 2006)]. Quantitative real time PCR confirmed that each of these genes were downregulated in Lef1-suppressed cells compared to control cells (Fig. 1A). Col11a1 expression was reduced between 3.5- and 7-fold (Fig. 1A and (Kahler et al., 2006)).

To verify that Col11a1 protein levels were concomitantly decreased in Lef1-suppressed cells, we treated control (Ffl) or Lef1-suppressed (L2) MC3T3 cells with osteogenic medium for 14 days. Protein extracts from both the conditioned media and extracellular matrices were subjected to immunoblot analysis. Collagen 11a1 was detectable in the conditioned medium of the control cells but not the Lef1-suppressed cells or in the extracellular matrices of either cell line (Fig. 1B and data not shown). Blotting with anti-decorin antibody shows that both samples contained similar amounts of protein (Fig. 1B). Similar results were obtained with MC3T3 clone 14 cell lines (data not shown). These data show that Lef1 suppression leads to reduced expression of Col11a1 mRNA and protein. In these conditions, it also appears that Col11a1 is mostly secreted into the medium and not integrated into the extracellular matrix. Decorin was readily detectable in the extracellular matrix (data not shown).

## 2.2. Lef1 activates the Col11a1 promoter

Because Col11a1 was so strongly downregulated in Lef1-suppressed cells, we asked if Lef1 could activate the collagen 11a1 promoter. We used a collagen 11a1 promoter reporter, pCol11a1(-1454)-luc, containing 1454 upstream of the transcriptional start site and the first exon of human Col11a1 (Fig. 2A) (Yoshioka et al., 1995). When transiently transfected into C2C12 cells, Lef1 activated the reporters 4-8-fold and in a concentration-dependent manner (Fig. 2B & C), but had no effect on the empty luciferase reporter plasmid, pGL3. Lef1 also activated the Col11a1 promoter in other cell lines, including MC3T3, NIH3T3 and ROS cells, albeit at lower levels (1.5 to 6 fold) (data not shown).

## 2.3. The Lef1 HMG domain is necessary for activation of the Col11a1 promoter

We next sought to determine whether Lef1 DNA binding activity is necessary for activation of the Col11a1 promoter. To test this, we used a Lef1 construct that lacks the HMG domain (Lef1 $\Delta$ HMG), which is necessary for DNA binding (Fig. 3A). Lef1 $\Delta$ HMG was unable to activate the Col11a1 reporter (Fig. 3B). These data suggest that Lef1 requires the HMG domain to activate the Col11a1 promoter, either through its DNA binding domain or through interaction with other proteins.

## 2.4. Lef1's $\beta$ -catenin binding domain is not required for activation of the Col11a1 promoter

In many systems, Lef1 interaction with  $\beta$ -catenin is necessary for Lef1-mediated activation of target genes (reviewed in (Behrens et al., 1996; Clevers and van de Wetering, 1997)). Lef1 lacking the  $\beta$ -catenin binding domain is still able to bind DNA and thus could compete with  $\beta$ -catenin-responsive Lef1 isoforms for DNA binding sites (reviewed in (Waterman, 2004)). To determine whether Lef1-mediated activation of the Col11a1 promoter was dependent upon interaction with  $\beta$ -catenin, we utilized an N-terminally truncated Lef1 mutant protein lacking the high affinity  $\beta$ -catenin binding domain (Fig. 4A). This construct, Lef1 $\Delta\beta$ -cat, activated the Col11a1 promoter in a dose dependent manner (Fig. 4B) and enhanced activation by full length Lef1 in an additive manner (Fig. 4B). These data indicate that Lef1 does not require interaction with  $\beta$ -catenin to activate the Col11a1 promoter. Furthermore, Lef1 $\Delta\beta$ -catenin does not behave as a competitive transcription factor at the Col11a1 promoter, suggesting that expression of Col11a1 by Lef1 may be Wnt-independent.

## 2.5. Reduced Col11a1 expression enhances osteoblastic differentiation of C2C12 cells

When induced to differentiate, Lef1-suppressed MC3T3 preosteoblasts express osteoblast markers and mineralize earlier than control cells (Kahler et al., 2006). To determine the role of Col11a1 in osteoblast maturation, C2C12 cells were cultured with BMP-2 in the presence or absence of an antisense morpholino specifically designed to downregulate the protein expression of Col11a1 by sterically blocking the translation of the Col11a1 mRNA. Control C2C12 cells that were either untransfected or transfected with a non-specific morpholino expressed Col11a1 protein at the time of induction and Col11a1 levels increased until 24 hours after the addition of BMP-2 (Fig. 5, panels A, B, D, E, G, H). By 48 hours following the addition of BMP-2, Col11a1 expression was nearly

undetectable (Fig. 5, panel J and K). C2C12 cells transfected with the Col11a1 antisense morpholino expressed considerably less Col11a1 protein at any time point, illustrating the effectiveness of the antisense morpholino (Fig. 5, Panels C, F, I, L). These data suggest that Col11a1 is expressed early in osteoblastic differentiation but that its expression is quickly downregulated as osteoblasts mature.

To determine the effect of the Col11a1 morpholino on osteoblastic differentiation, we cultured C2C12 cells in osteogenic medium containing BMP-2 in the presence or absence of the Col11a1 antisense or the control morpholino and then stained the cells for alkaline phosphatase activity and mineralization. C2C12 cells that were transfected with the Col11a1 antisense morpholino exhibited increased alkaline phosphatase activity and von Kossa staining as compared to C2C12 cells that were untreated or transfected with a control morpholino (Fig. 6). These data indicate that Col11a1 is a negative regulator of osteoblast differentiation.

## 2.6. An N-terminal fragment of Col11a1, V1B, blocks alkaline phosphatase production by pre-osteoblasts.

We next sought to confirm the role of Col11a1 as a negative regulator of osteoblast maturation by determining the consequence of increased Col11a1 protein during osteoblast differentiation. To test this, we cultured C2C12 cells in osteogenic medium containing BMP-2 in the presence of Col11a1 N-terminal fragments V0 or V1B. The N-terminal fragments V0 and V1B represent variations of the domain of Col11a1 that remains associated with the surface of collagen fibril for an extended period of time. V0 and V1B are the two most prevalent isoforms implicated in mineralization of the bone collar in long bone development (Davies et al 1998, Morris et al. 2000). In addition, the N-terminal fragments are proteolytically released from the surface of collagen fibrils slowly but at isoform-specific rates of processing (Thom et al. 1991, Medeck et al. 2003). As compared to control cells, C2C12 cells treated with V1B had a 60% decrease in alkaline phosphatase production after two days and 28% reduction after five days (Fig. 7A), but only the former level reached statistical significance ( $p < 0.5$ ). Similarly, MC3T3 cells treated with Col11a1 V1B fragment exhibited reduced expression of alkaline phosphatase compared to control MC3T3 cells at days three and nine of differentiation in osteogenic medium (Fig. 7B), but only the 73% reduction at day three was statistically significant ( $p < 0.001$ ). Fragment V0 also suppressed alkaline phosphates production in MC3T3 cells albeit to a lesser (39%) but significant level ( $p < 0.01$ ) at day three. V0 did not affect alkaline phosphatase production by C2C12 cells. These data support the role of Col11a1 as a negative regulator of osteoblast maturation in an isoform-specific manner. V1B has been found specifically expressed in the cartilage immediately underlying the perichondrium, yet excluded from the developing articular surface, further supporting the hypothesis of distinct functions for the different isoforms.

## 3. Discussion

Collagen 11a1 is mutated in Marshall and Stickler syndromes (Snead et al., 1996; Griffith et al., 1998; Meisler et al., 1998; Annunen et al., 1999; Martin et al., 1999; Snead and Yates, 1999). Patients with Marshall syndrome exhibit short stature and bony overgrowths on the skull (Stratton et al., 1991; Meisler et al., 1998), suggesting a role for Col11a1 in controlling bone mineralization. Further evidence for this conclusion is apparent in the Cho mice, which exhibit excess mineralization in the long bones (Seegmiller et al., 1971; Li et al., 1995). Sequence variations in the Col11a1 gene are also associated with osteoarthritis, early-onset osteoarthritis, degenerative lumbar spinal stenosis and cleft palate (Melkonien et al., 2003; Noponen-Hietala et al., 2003; Rodriguez et al., 2004; Jakkula et al., 2005). Its association with a variety of common diseases makes Col11a1 an important target for musculoskeletal disease research.

This report highlights a role for Lef1 in regulating Col11a1 expression. Reduced Lef1 expression correlates with decreased expression of Col11a1 mRNA and protein [Fig. 1 and (Kahler et al., 2006)]. Transient transfection assays indicated that Lef1 activates the Col11a1 promoter in a concentration-dependent manner (Fig. 2). These data are consistent with a study which found a correlation between Col11a1 expression in colorectal carcinoma and an activated  $\beta$ -catenin-Lef1/Tcf pathway (Fischer et al., 2001). Analysis of the Col11a1 promoter identified at least six potential Lef1 binding sites, but only two were found to bind Lef1 in vitro (data not shown). Mutating these sites individually or all together did not eliminate the activation of the reporter by Lef1. These data suggest that Lef1 activates the Col11a1 promoter indirectly, perhaps through the HMG domain, which is essential for Lef-1 mediated activation.

Despite the seriousness of Marshall and Stickler syndromes and the implications of *Col11a1* expression in osteoarthritis and other common disorders, there are only a handful of reports on the transcriptional control of the *Col11a1* gene. The initial studies defining the *Col11a1* promoter identified the minimal promoter containing cell type specificity as the fragment from -199 to +269 (Yoshioka et al., 1995). However, the most active promoter fragment in this study contained nucleotides -541 to +269. We found that this fragment remains responsive to Lef1 (data not shown). Yoshioka, et al. identified nine DNase I protected footprints in the region of the promoter containing bases -541 to + 269, most of which were identified as probable binding sites for ubiquitously expressed proteins NF- $\kappa$ B, CF1, AP2, AP3 and Sp1. (Yoshioka et al., 1995). One footprint was determined to be a binding site for a zinc-finger protein that was termed FP9C (Kinoshita et al., 1997). The only reported zinc-finger protein to interact with Tcf/Lef1 is Kaiso, which competes with  $\beta$ -catenin for binding to Tcf-3 resulting in transcriptional repression of the *Samois* gene in *X. laevis* (Park et al., 2005). This is unlikely to be the factor through which Lef1 activates the *Col11a1* promoter for several reasons. First, the Kaiso binding sequence does not match that of the unidentified zinc-finger protein FP9C. Second, Kaiso competes with  $\beta$ -catenin binding to Tcf/Lef1 and the  $\beta$ -catenin binding domain is not necessary for activation of the *Col11a1* promoter (Fig. 2 and 3). Finally, Kaiso is reported to be a repressor of transcription so interaction between Lef1 and Kaiso is unlikely to result in transcriptional activation (Kim et al., 2004; Park et al., 2005; Spring et al., 2005).

A second transcription factor reported to interact with the *Col11a1* promoter is CBF/NF-Y (Matsuo et al., 2003). This transcription factor binds to the *Col11a1* promoter within the -147 to -121 region and activates transcription of promoter (Matsuo et al., 2003). At this time, there is no evidence to suggest that Lef1 could be activating the *Col11a1* promoter indirectly through CBF/NF-Y. We found that Lef1 did not cooperate with NF-Y (data not shown). We also did not detect any changes in CBF/NF-Y expression in the gene chip experiment performed with Lef1-suppressed cells, suggesting that the activity of Lef1 on the *Col11a1* promoter is not through changes in CBF/NF-Y expression (data not shown). Further studies will have to be performed to determine the nature of Lef1's interaction with the *Col11a1* promoter whether it is through the above-mentioned mechanisms or through some other undetermined mechanism.

Though the importance of *Col11a1* has been established through the detrimental effects of the loss of normal *Col11a1* expression in Marshall and Stickler syndromes, the exact role *Col11a1* plays in bone formation has not yet been identified. This report shows a link between Lef1 and *Col11a1* both in the ability of Lef1 to activate the *Col11a1* promoter and the osteoblastic phenotype resulting from reduced expression of both Lef1 and *Col11a1*. We previously reported that using RNAi to reduce Lef1 expression leads to accelerated osteoblast maturation characterized by early expression of osteoblast markers and enhanced matrix mineralization (Kahler et al., 2006). Lef1-suppressed cells have reduced *Col11a1* expression (Fig. 1). When we used an antisense morpholinos to mimic the reduced *Col11a1* expression seen in Lef1-suppressed cells, we observed that alkaline phosphatase expression and mineralization were enhanced (Fig. 6). In accordance, exposure to a *Col11a1* N-terminal fragment delayed early osteoblast maturation as measured by alkaline phosphatase expression. These data suggest that one of the main mechanisms for the enhanced differentiation we observed as a result of reducing Lef1 levels is the reduction of *Col11a1*. They also suggest that *Col11a1* is important for controlling the rate of osteoblast mineralization. The V0 and V1B containing isoforms of *Col11a1* constitute 70% to 80% of the total *Col11a1* transcripts in growth plate cartilage, including the region undergoing mineralization to form the bone collar between the cartilage and the perichondrium. V1B *Col11a1* shows a restricted distribution in the cartilage of the developing long bones. Before primary ossification, V1B is expressed only in the diaphysis, primarily adjacent to the perichondrium, a location consistent with a role in the inhibition of osteoblast differentiation and mineralization. This unique localization of V1B may indicate that it is involved in the signaling between the cells of the perichondrium, associated chondrocytes and differentiating osteoblasts.

The main function of type XI collagen is to control fibrillogenesis of type II collagen (Gelse et al., 2003). However, this function requires the integration of type XI collagen into matrix containing type II collagen (Gelse et al., 2003). Furthermore, the expression of each of the individual type XI collagen genes is varied from tissue to tissue, suggesting that they do not form heterotrimers in all tissues and hence the function of each type XI collagen molecule might be tissue specific (Lui et al., 1995). When we examined the expression of *Col11a1* upon induction of osteoblastic differentiation, we observed very early expression of *Col11a1* with nearly a complete loss of expression by 48 hours (Fig. 5). It is possible that *Col11a1* is incorporated into the matrix but cannot be detected by immunofluorescence. However, we were unable to detect *Col11a1* protein in the matrix of differentiating osteoblasts by immunoblotting, a method that easily detected *Col11a1* in the supernatant (Fig. 1). The absence of

Col11a1 in the matrix suggests that the role of Col11a1 in osteoblast differentiation is separate from its role in controlling fibrillogenesis in other tissues. The mechanism by which the reduction of Col11a1 expression induces enhanced mineralization and alkaline phosphatase remains to be determined. However, its presence outside of the matrix might suggest a role in regulating the availability of growth factors or as a signaling molecule itself (reviewed in (Tran et al., 2004; Bi et al., 2005; Bix and Iozzo, 2005; Iozzo, 2005; Tran et al., 2005)).

#### 4. Experimental Procedures

##### 4.1. Plasmids

The luciferase reporter construct (pCol11a1(-1454)-luc) was kindly provided by Dr. Francesco Ramirez (Kinoshita et al., 1997; Matsuo et al., 2003). Dr. Liliana Attisano provided pCMV5B-Lef1-HA and pCMV5B-Lef1ΔHMG-HA. Dr. Randall Moon provided pCMV5-Lef1Δβ-catenin.

##### 4.2. Cell Culture and Differentiation

MC3T3 F1 and MC3T3 L2 cells were described previously (Kahler et al., 2006). MC3T3 cells were maintained in minimal essential medium (MEM) supplemented with 10% fetal bovine serum (FBS), 1% non-essential amino acids, 200 mM L-glutamine, 50 units/ml penicillin and 50 μg/ml streptomycin. To induce differentiation, confluent MC3T3-E1 were transferred to differentiation medium (α-MEM supplemented with 10% FBS, 50 units/ml penicillin, 50 μg/ml streptomycin, 50 μg/ml ascorbic acid and 10 mM β-glycerolphosphate), which was replaced every three days.

C2C12 cells were maintained at  $1.5 \times 10^5$  cells per  $75 \text{ cm}^2$  in Dulbecco's modified Eagle's medium (DMEM) (Gibco) containing 10% FBS (Gibco), 100U/ml penicillin and 100 μg/ml streptomycin, at 37°C in a humidified atmosphere, 5% CO<sub>2</sub>. To induce differentiation along the osteoblastic lineage, C2C12 cells were plated at  $2 \times 10^4$  cells/cm<sup>2</sup> and the medium was replaced with DMEM containing 5% FBS, 100U/ml penicillin, 100 μg/ml streptomycin and 300 ng/ml of BMP-2 for the indicated lengths of time.

Twelve micromolar of either Col11a1 antisense (5'-ACCTGGACCAGGGCTCCATCACCAA-3') or standard control morpholino, (5'-CCTCTTACCTCAGTTACAATTTATA-3') (Gene Tools) and 6 μM of Endo-Porter (Gene Tools) were added to C2C12 cells at  $2 \times 10^4$  cells/cm<sup>2</sup>. Cells were incubated for 24 hours in medium containing 5% FBS, 100 U/ml penicillin and 100 μg/ml streptomycin prior to inducing osteoblastic differentiation as described above.

One microgram of either Col11a1 N-terminal fragment V0 or V1B purified protein was added to C2C12 cells and MC3T3 cells cultured in osteogenic medium as described above at a density of  $1.5 \times 10^5$  cells per well of a 12-well plate. Col11a1 V0 or V1B protein was added to the cells every 3 days over the course of the differentiation when the medium was replaced.

##### 4.3. Collagen Fragment Synthesis

V0 and V1B sequences were amplified, cloned and expressed as described previously (Gregory et al 2000). Recombinant proteins were purified, refolded and characterized as previously described (Warner et al. 2007).

##### 4.4. Alkaline Phosphatase and von Kossa Staining

C2C12 cells were plated at  $2 \times 10^4$  cells/cm<sup>2</sup> on tissue culture-treated glass slides (Nunc) in the presence or absence of the collagen 11a1 antisense or control morpholino for 14 days with 300 ng/ml of BMP-2 (R&D Systems). C2C12 cells were then fixed for 5 minutes in cold methanol and incubated for 45 minutes in 0.1 mg/ml of naphthol AS-MX phosphate, 0.4% N, N-Dimethylformamide, 0.2M Tris-HCl pH 8.3 and 0.6mg/ml of Red Violet LB salt. The slides were then washed in distilled water four times and stained with 2.5% silver nitrate for 30 minutes, followed by 4 washes in distilled water.



#### 4.5. Cell Transfection and Luciferase Assays

Prior to transfection, C2C12 cells were seeded at a density of  $4 \times 10^4$  cells/well into 12-well plates and allowed to adhere overnight. C2C12 cells were transiently transfected with pGL3 or pGL3-Col11a1-luc (200 ng/well), pRL-null (50 ng/well), and pCMV5B-Lef1-HA, pCMV5B-Lef1 $\Delta$ HMG-HA or pCMV5-Lef1 $\Delta$  $\beta$ -catenin as indicated using LipofectAMINE (Invitrogen) as directed by the manufacturer. Transcription of luciferase reporter constructs was measured using the Dual-Luciferase Reporter Assay System kit (Promega) according to the manufacturer's instructions 24 hours after transfection.

#### 4.6. Reverse Transcriptase Polymerase Chain Reaction

RT-PCR was performed by reverse transcribing 1  $\mu$ g RNA using the Invitrogen Superscript First-Strand Synthesis System for RT-PCR. Targets were amplified from the cDNA, 1  $\mu$ l of a 1:10 dilution, using the sequence-specific primers: Lef1 forward 5'-TCACTGTCAGGCGACACTTC-3', Lef1 reverse 5'-TGAGGCTTCACGTGCATTAG-3', Col3a1 forward 5'-GTCCACGAGGTGACAAAGGT-3', Col3a1 reverse 5'-CATCTTTCCAGGAGGTCCA-3', Col5a1 forward 5'-TGCCCTCTGACTGCCTCTAT-3', Col5a1 reverse 5'-CACATTGCAGCCTGAAAGAA-3', Col6a2 forward 5'-CTTCCCCTACCCCAAGTCTC-3', Col6a2 reverse 5'-TGATATGGGGCTCTCAGGTC-3', Col11a1 forward 5'-CTGGTCATCCTGGGAAAGAA-3', Col11a1 reverse 5'-TTGAATCCTGGAAAGCCATC-3', Actin forward 5'-AAGGAAGGCTGGAAAAGAGC-3', Actin reverse 5'-GCTACAGCTTCACCACCACA-3', Alkaline phosphatase forward 5'-TGTTGACAAGGCAGACAAGC-3', Alkaline phosphatase reverse 5'-CAGGACCGTTGCCGTATAGT-3'. Standard RT-PCRs were performed in a Bio Rad iCycler. All quantitative PCRs were done in a Roche Light Cycler. Amplification of targets was performed on cDNA using the SYBR Green Taq ReadyMix, Capillary Formulation (Sigma).

#### 4.7. Extracellular Matrix Preparation

Media were collected from 14-day differentiation cultures and the remaining cells were washed once with 0.5 M acetic acid. The washes were pooled with the conditioned media before equal volumes of 4 M NaCl in 0.5 M acetic acid were added. Proteins were precipitated by incubating this mixture for 48 hours at 4° C. To collect the extracellular matrix proteins, the washed cells were treated overnight with 1 mg/ml pepsin in 0.5 M acetic acid at 4° C. The supernatants were collected and proteins precipitated as described above. All protein precipitates were collected by centrifugation for 1 hour at 26,000 x g, resuspended in 0.5 M acetic acid and dialyzed against 0.5 M acetic acid to remove the salts. The samples were then lyophilized and resuspended in 0.5 M acetic acid.

#### 4.8. Immunoblotting

Protein was quantitated using the Bio-Rad D<sub>C</sub> Protein Assay kit. Protein aliquots were mixed with non-reducing protein sample dye and resolved by SDS 7% PAGE. Proteins were transferred to PVDF membranes for immunoblotting with a rabbit polyclonal antibody recognizing the C-telopeptide domain of collagen 11a1 (20545) (Li et al., 1995; Davies et al., 1998) or mouse monoclonal anti-decorin antibody (Scott et al., 1993). Col11a1 and decorin antibodies were diluted 1:1000 and 1:40, respectively, in TBST (TBS, 0.4% tween-20) with 3% BSA. Dr. Paul G. Scott graciously provided the anti-decorin antibody.

#### 4.9. Immunofluorescence and Microscopy

C2C12 cells were plated as described above on glass slides in the presence or absence of Col11a1 antisense or control morpholinos. All treatment groups received 300 ng/ml of BMP-2 following 24 hours incubation with the indicated morpholino. The cells were fixed for 5 minutes in cold methanol at the indicated time points ranging from 0 hours to 48 hours following treatment with BMP-2. The slides were then rinsed in TBS and permeabilized in TBS-0.5% Triton X-100 (TX) for 10 minutes. The slides were washed 3x 5 minutes in TBS-0.1% TX, followed by blocking with 2% BSA in TBS-0.1% TX for 10 minutes. Anti-collagen 11a1 antibody was added to the slide at a dilution of 1:100 in 2% BSA, TBS-0.1% TX for 1.5 hours in a humidified chamber at 37°C. The cells were subsequently washed 5x 5minutes in TBS-0.1% TX. Following the last wash, the secondary antibody, a Rhodamine (TRITC)-conjugated AffiniPure Donkey Anti-Rabbit IgG (Jackson ImmunoResearch Laboratories) diluted 1:100 in TBS-0.1% TX was added and incubated for 1 hour in a humidified chamber at 37°C. The slides were then washed

3x 5 minutes in TBS-0.1% TX and incubated in 3.0 µg/ml of DAPI for 10 minutes (Molecular Probes). The slides were again washed 3x 5 minutes in TBS-0.1% TX, rinsed once in TBS, drained, mounted with Vectashield according to the manufacturer's protocol (Vector Laboratories) and sealed.

For microscopic observation and photomicrography of the fluorescently labeled cells, an Olympus BX60 fluorescence microscope equipped with a PM-10AD system for photomicrography was used. The fluorescent molecules were excited with a 100 W mercury lamp. TRITC-labeled molecules were detected with a filter set having a 510-560 nm wavelength bandpass, a 565 nm dichroic beamsplitter and a 575 to 645 nm emission filter (scale 10 nm).

For microscopic observation and photomicrography of the general morphology and of alkaline phosphatase and Von Kossa staining of the cells, a Nikon Inverted Microscope Eclipse TS100-F equipped with a Spot Insight Color digital camera and software was used (Nikon Instruments Inc.). The cells were detected with a 40x objective using Hoffman Modulation Contrast (HMC) microscopy (scale 10nm).

### Acknowledgments

This work was supported by NIH grants AR050074 and AR048147 to JJW, T32-AR050938, and AR47985, AR48672, RR16454 to JTO, Idaho SBOE Musculoskeletal Research Center, Lori and Duane Stueckle professorship, and funding from the M. J. Murdock Foundation (JTO).

### References

- Annunen, S., Korkko, J., Czarny, M., Warman, M. L., Brunner, H. G., Kaariainen, H., Mulliken, J. B., Tranebjaerg, L., Brooks, D. G., Cox, G. F., Cruysberg, J. R., Curtis, M. A., Davenport, S. L., Friedrich, C. A., Kaitila, I., Krawczynski, M. R., Latos-Bielenska, A., Mukai, S., Olsen, B. R., Shinno, N., Somer, M., Vikkula, M., Zlotogora, J., Prockop, D. J. and Ala-Kokko, L. 1999. Splicing mutations of 54-bp exons in the COL11A1 gene cause Marshall syndrome, but other mutations cause overlapping Marshall/Stickler phenotypes. *Am. J. Hum. Genet.* 65, 974-83.
- Ayme, S. and Preus, M. 1984. The Marshall and Stickler syndromes: objective rejection of lumping. *J. Med. Genet.* 21, 34-8.
- Behrens, J., von Kries, J. P., Kuhl, M., Bruhn, L., Wedlich, D., Grosschedl, R. and Birchmeier, W. 1996. Functional interaction of beta-catenin with the transcription factor LEF-1. *Nature.* 382, 638-42.
- Bi, Y., Stuelten, C. H., Kilts, T., Wadhwa, S., Iozzo, R. V., Robey, P. G., Chen, X. D. and Young, M. F. 2005. Extracellular matrix proteoglycans control the fate of bone marrow stromal cells. *J. Biol. Chem.* 280, 30481-9.
- Bix, G. and Iozzo, R. V. 2005. Matrix revolutions: "tails" of basement-membrane components with angiostatic functions. *Trends Cell Biol.* 15, 52-60.
- Clevers, H. and van de Wetering, M. 1997. TCF/LEF factor earn their wings. *Trends Genet.* 13, 485-9.
- Comper, W. D. 1996. Extracellular Matrix. Amsterdam, The Netherlands, Harwood Academic Publishers.
- Davies, G. B., Oxford, J. T., Hausafus, L. C., Smoody, B. F. and Morris, N. P. 1998. Temporal and spatial expression of alternative splice-forms of the alpha1(XI) collagen gene in fetal rat cartilage. *Dev. Dyn.* 213, 12-26.
- Fichard, A., Kleman, J. P. and Ruggiero, F. 1995. Another look at collagen V and XI molecules. *Matrix Biol.* 14, 515-31.

- Fischer, H., Salahshor, S., Stenling, R., Bjork, J., Lindmark, G., Iselius, L., Rubio, C. and Lindblom, A. 2001. COL11A1 in FAP polyps and in sporadic colorectal tumors. *BMC Cancer*. 1, 17.
- Galceran, J., Sustmann, C., Hsu, S. C., Folberth, S. and Grosschedl, R. 2004. LEF1-mediated regulation of Delta-like1 links Wnt and Notch signaling in somitogenesis. *Genes Dev*. 18, 2718-23.
- Gelse, K., Poschl, E. and Aigner, T. 2003. Collagens--structure, function, and biosynthesis. *Adv Drug Deliv Rev*. 55, 1531-46.
- Gokhale, J. A., Robey, P. G. and Boskey, A. L. 2001. The Biochemistry of Bone. Osteoporosis. San Diego, CA, Academic Press.
- Gregory, K.E., Oxford, J.T., Chen, Y., Gambia, J. E., Gygi, S.P., Aebersold, R., Neame, P.J., Mechling, D.E., Bachinger, H.P., Morris, N.P. (2000) Structural organization of distinct domains within the non-collagenous N-terminal region of collagen type XI. *J. Biol. Chem*. 275, 11498-11506.
- Griffith, A. J., Sprunger, L. K., Sirko-Osadsa, D. A., Tiller, G. E., Meisler, M. H. and Warman, M. L. 1998. Marshall syndrome associated with a splicing defect at the COL11A1 locus. *Am. J. Hum. Genet*. 62, 816-23.
- Iozzo, R. V. 2005. Basement membrane proteoglycans: from cellar to ceiling. *Nat Rev Mol Cell Biol*. 6, 646-56.
- Iyama, K., Sumiyoshi, H., Khaleduzzaman, M., Matsuo, N., Ninomiya, Y. and Yoshioka, H. 2001. Differential expression of two exons of the alpha1(XI) collagen gene (Col11a1) in the mouse embryo. *Matrix Biol*. 20, 53-61.
- Jakkula, E., Melkonniemi, M., Kiviranta, I., Lohiniva, J., Raina, S. S., Perala, M., Warman, M. L., Ahonen, K., Kroger, H., Goring, H. H. and Ala-Kokko, L. 2005. The role of sequence variations within the genes encoding collagen II, IX and XI in non-syndromic, early-onset osteoarthritis. *Osteoarthritis Cartilage*. 13, 497-507.
- Kahler, R. A., Galindo, M., Lian, J., Stein, G. S., van Wijnen, A. J. and Westendorf, J. J. 2006. Lymphocyte enhancer-binding factor 1 (Lef1) inhibits terminal differentiation of osteoblasts. *J. Cell. Biochem*. 97, 969-83.
- Kahler, R. A. and Westendorf, J. J. 2003. Lymphoid enhancer factor-1 and beta-catenin inhibit Runx2-dependent transcriptional activation of the osteocalcin promoter. *J. Biol. Chem*. 278, 11937-44.
- Kim, S. W., Park, J. I., Spring, C. M., Sater, A. K., Ji, H., Otchere, A. A., Daniel, J. M. and McCrea, P. D. 2004. Non-canonical Wnt signals are modulated by the Kaiso transcriptional repressor and p120-catenin. *Nat Cell Biol*. 6, 1212-20.
- Kinoshita, A., Greenwel, P., Tanaka, S., Di Liberto, M., Yoshioka, H. and Ramirez, F. 1997. A transcription activator with restricted tissue distribution regulates cell-specific expression of alpha1(XI) collagen. *J. Biol. Chem*. 272, 31777-84.
- Li, Y., Lacerda, D. A., Warman, M. L., Beier, D. R., Yoshioka, H., Ninomiya, Y., Oxford, J. T., Morris, N. P., Andrikopoulos, K., Ramirez, F. and et al. 1995. A fibrillar collagen gene, Col11a1, is essential for skeletal morphogenesis. *Cell*. 80, 423-30.
- Lui, V. C., Kong, R. Y., Nicholls, J., Cheung, A. N. and Cheah, K. S. 1995. The mRNAs for the three chains of human collagen type XI are widely distributed but not necessarily co-expressed: implications for homotrimeric, heterotrimeric and heterotypic collagen molecules. *Biochem. J*. 311 ( Pt 2), 511-6.
- Martin, S., Richards, A. J., Yates, J. R., Scott, J. D., Pope, M. and Snead, M. P. 1999. Stickler syndrome: further mutations in COL11A1 and evidence for additional locus heterogeneity. *Eur. J. Hum. Genet*. 7, 807-14.

- Matsuo, N., Yu-Hua, W., Sumiyoshi, H., Sakata-Takatani, K., Nagato, H., Sakai, K., Sakurai, M. and Yoshioka, H. 2003. The transcription factor CCAAT-binding factor CBF/NF-Y regulates the proximal promoter activity in the human alpha 1(XI) collagen gene (COL11A1). *J. Biol. Chem.* 278, 32763-70.
- Medeck, R.J., Sosa, S., Morris, N., Oxford, J.T. 2003 BMP-1-mediated proteolytic processing of alternatively spliced isoforms of collagen type XI. *Biochem J.*, 376, 361-368.
- Meisler, M. H., Griffith, A. J., Warman, M., Tiller, G. and Sprunger, L. K. 1998. Gene symbol: COL11A1. Disease: Marshall syndrome. *Hum. Genet.* 102, 498.
- Melkonieni, M., Koillinen, H., Mannikko, M., Warman, M. L., Pihlajamaa, T., Kaariainen, H., Rautio, J., Hukki, J., Stofko, J. A., Cisneros, G. J., Krakow, D., Cohn, D. H., Kere, J. and Ala-Kokko, L. 2003. Collagen XI sequence variations in nonsyndromic cleft palate, Robin sequence and micrognathia. *Eur. J. Hum. Genet.* 11, 265-70.
- Morris, N.P., Oxford, J.T., Davies, G.B.M., Smoody, B.F., Keene, D.R. 2000. Developmentally regulated alternative splicing of the  $\alpha 1$ (XI) collagen chain: Spatial and temporal segregation of isoforms in the cartilage of fetal rat long bones. *Journal of Histochemistry and Cytochemistry.* 48, 725-741.
- Nojonen-Hietala, N., Kyllonen, E., Mannikko, M., Ilkko, E., Karppinen, J., Ott, J. and Ala-Kokko, L. 2003. Sequence variations in the collagen IX and XI genes are associated with degenerative lumbar spinal stenosis. *Ann. Rheum. Dis.* 62, 1208-14.
- Olsen, B. R. 1995. Mutations in collagen genes resulting in metaphyseal and epiphyseal dysplasias. *Bone.* 17, 45S-49S.
- Park, J. I., Kim, S. W., Lyons, J. P., Ji, H., Nguyen, T. T., Cho, K., Barton, M. C., Deroo, T., Vleminckx, K., Moon, R. T. and McCrea, P. D. 2005. Kaiso/p120-catenin and TCF/beta-catenin complexes coordinately regulate canonical Wnt gene targets. *Dev Cell.* 8, 843-54.
- Robey, P. G. and Boskey, A. L. (2003). Extracellular Matrix and Biomineralization of Bone. Primer on the Metabolic Bone Diseases Disorders and Mineral Metabolism. American Society for Bone and Mineral Research, Washington, D.C.
- Rodriguez, R. R., Seegmiller, R. E., Stark, M. R. and Bridgewater, L. C. 2004. A type XI collagen mutation leads to increased degradation of type II collagen in articular cartilage. *Osteoarthritis Cartilage.* 12, 314-20.
- Scott, P. G., Dodd, C. M. and Pringle, G. A. 1993. Mapping the locations of the epitopes of five monoclonal antibodies to the core protein of dermatan sulfate proteoglycan II (decorin). *J. Biol. Chem.* 268, 11558-64.
- Seegmiller, R., Fraser, F. C. and Sheldon, H. 1971. A new chondrodystrophic mutant in mice. Electron microscopy of normal and abnormal chondrogenesis. *J. Cell Biol.* 48, 580-93.
- Snead, M. P. and Yates, J. R. 1999. Clinical and Molecular genetics of Stickler syndrome. *J. Med. Genet.* 36, 353-9.
- Snead, M. P., Yates, J. R., Williams, R., Payne, S. J., Pope, F. M. and Scott, J. D. 1996. Stickler syndrome type 2 and linkage to the COL11A1 gene. *Ann. N. Y. Acad. Sci.* 785, 331-2.
- So, C. L., Kaluarachchi, K., Tam, P. P. and Cheah, K. S. 2001. Impact of mutations of cartilage matrix genes on matrix structure, gene activity and chondrogenesis. *Osteoarthritis Cartilage.* 9 Suppl A, S160-73.
- Spring, C. M., Kelly, K. F., O'Kelly, I., Graham, M., Crawford, H. C. and Daniel, J. M. 2005. The catenin p120ctn inhibits Kaiso-mediated transcriptional repression of the beta-catenin/TCF target gene matrilysin. *Exp. Cell Res.* 305, 253-65.
- Stratton, R. F., Lee, B. and Ramirez, F. 1991. Marshall syndrome. *Am. J. Med. Genet.* 41, 35-8.

- Thom, J.R., Morris, N.P. (1991) Biosynthesis and proteolytic processing of type XI collagen in embryonic chick sterna, *Journal of Biological Chemistry*, 266:7262-7269.
- Tran, K. T., Griffith, L. and Wells, A. 2004. Extracellular matrix signaling through growth factor receptors during wound healing. *Wound Repair Regen.* 12, 262-8.
- Tran, K. T., Lamb, P. and Deng, J. S. 2005. Matrikines and matricryptins: Implications for cutaneous cancers and skin repair. *J. Dermatol. Sci.* 40, 11-20.
- van Genderen, C., Okamura, R. M., Farinas, I., Quo, R. G., Parslow, T. G., Bruhn, L. and Grosschedl, R. 1994. Development of several organs that require inductive epithelial-mesenchymal interactions is impaired in LEF-1-deficient mice. *Genes Dev.* 8, 2691-703.
- Warner, L.R., Blasick, C.M., Brown, R.J., Oxford, J.T., (2007) Expression, Purification, and Refolding of Recombinant Collagen  $\alpha 1$ (XI) Amino Terminal Domain Splice Variants, *Protein Expr Purif*, 52:403-409.
- Waterman, M. L. 2004. Lymphoid enhancer factor/T cell factor expression in colorectal cancer. *Cancer Metastasis Rev.* 23, 41-52.
- Westendorf, J. J., Kahler, R. A. and Schroeder, T. M. 2004. Wnt signaling in osteoblasts and bone diseases. *Gene*. 341, 19-39.
- Winter, R. M., Baraitser, M., Laurence, K. M., Donnai, D. and Hall, C. M. 1983. The Weissenbacher-Zweymuller, Stickler, and Marshall syndromes: further evidence for their identity. *Am. J. Med. Genet.* 16, 189-99.
- Yoshioka, H., Greenwel, P., Inoguchi, K., Truter, S., Inagaki, Y., Ninomiya, Y. and Ramirez, F. 1995. Structural and functional analysis of the promoter of the human alpha 1(XI) collagen gene. *J. Biol. Chem.* 270, 418-24.
- Yoshioka, H., Iyama, K., Inoguchi, K., Khaleduzzaman, M., Ninomiya, Y. and Ramirez, F. 1995. Developmental pattern of expression of the mouse alpha 1 (XI) collagen gene (Col11a1). *Dev. Dyn.* 204, 41-7.

## Figure Legends

**Figure 1. Col11a1 expression is reduced in Lef1-deficient cells.** A. The relative change in expression of collagen 11a1 in Lef1-suppressed MC3T3 cells (L2) as compared to control cells expressing a short hairpin RNA against firefly luciferase (Ffl). Black bars depict fold reduction of expression  $\pm$  SD as measured by gene chip analysis with a p-value  $\leq 0.05$ . Grey bars depict fold reduction of expression  $\pm$  SD as measured by quantitative RT-PCR. B. Immunoblot analysis of protein precipitated from L2 or Ffl cell-conditioned media. The upper panel is blotted with  $\alpha$ -collagen 11a1 antibody. The lower panel is blotted with  $\alpha$ -decorin antibody as a protein loading control.

**Figure 2. Lef1 activates the Col11a1 promoter.** A. This schematic depicts the Col11a1 promoter used in this study. pCol11a1(-1454)-luc encompasses bases -1454 to +269. B. C2C12 cells were transfected with pGL3 or pGL3-Col11a1(-1454)-luc, pRL-null and 200 ng of either pcDNA (-) or pCMV5B-Lef1-HA. Transcriptional activation is shown as fold luciferase activity over control  $\pm$  SEM and corrected for transfection efficiency relative to renilla expression. C. C2C12 cells were transfected with pGL3-Col11a1(-1454)-luc, pRL-null and the indicated concentrations of pCMV5B-Lef1-HA. Data were analyzed as in B.

**Figure 3. The HMG domain of Lef1 is required for activation of Col11a1 promoter.** A. This schematic depicts the Lef1 and Lef1 $\Delta$ HMG expression constructs used in these experiments.  $\beta$ -cat BD,  $\beta$ -catenin binding domain; TLE BD, TLE binding domain; HMG, high mobility group domain. B. C2C12 cells were transfected with pCol11a1(-1454)-luc, pRL-null and 200 ng of either pcDNA3 (-), pCMV5-Lef1-HA (Lef1), or pCMV5-Lef1 $\Delta$ HMG-HA ( $\Delta$ HMG) as indicated. Transcription is measured as fold luciferase activity over control  $\pm$  SEM.

**Figure 4. Interaction with  $\beta$ -catenin is not required for Lef1-mediated activation of the Col11a1 promoter.**

A. This diagram depicts Lef1 and Lef1 $\Delta\beta$ -cat. Abbreviations are listed in Fig. 5A. B. C2C12 cells were transfected with pCol11(-1454)-luc, pRL-null, 200 ng pCMV5B-Lef1-HA and either 200 ng pcDNA3 (-) or the indicated amount of Lef1 $\Delta\beta$ -cat.

**Figure 5. Col11a1 expression is inhibited by Col11a1 antisense morpholinos.** A-C. C2C12 cells were treated with either no (A), control (B) or Col11a1 antisense morpholinos (C) and immunofluorescently stained with an anti-Col11a1 primary antibody and a TRITC-labeled secondary antibody. D-L. C2C12 cells were treated with the indicated morpholinos and induced to differentiate into the osteoblastic lineage by treatment with BMP-2 for the indicated length of time, followed by immunofluorescent staining as above.

**Figure 6. A Col11a1 antisense morpholinos induces increased expression of osteoblast markers.** C2C12 cells were treated either with no (A), control (B) or Col11a1 antisense morpholinos (C) and stained for alkaline phosphatase activity (red) and mineralization (von Kossa staining, black) after 14 days treatment with BMP-2.

**Figure 7: Alkaline phosphatase expression is inhibited during osteoblast differentiation by an N-terminal Col11a1 fragment, V1B.** C2C12 cells were differentiated in osteogenic medium supplemented with BMP2 for five days (A) and MC3T3-E1 cells were differentiated in osteogenic medium for nine days (B) in the presence of vehicle alone, Col11a1 V0 fragment, or Col11a1 V1B fragment. RNA was collected at the indicated time points and quantitative PCR was performed using alkaline phosphatase and actin specific primers. Alkaline phosphatase values were normalized to actin.

Figure1

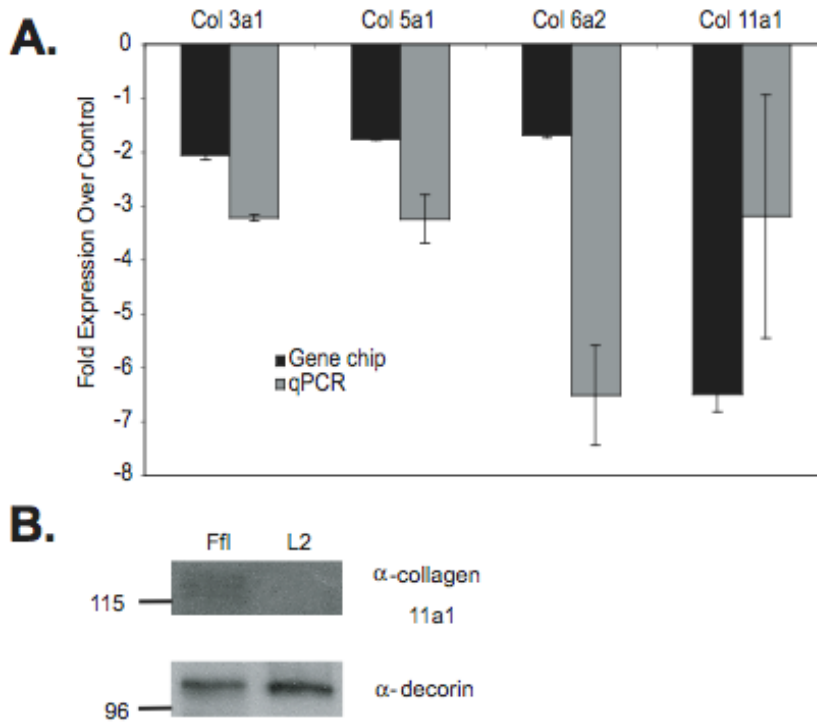


Figure 2

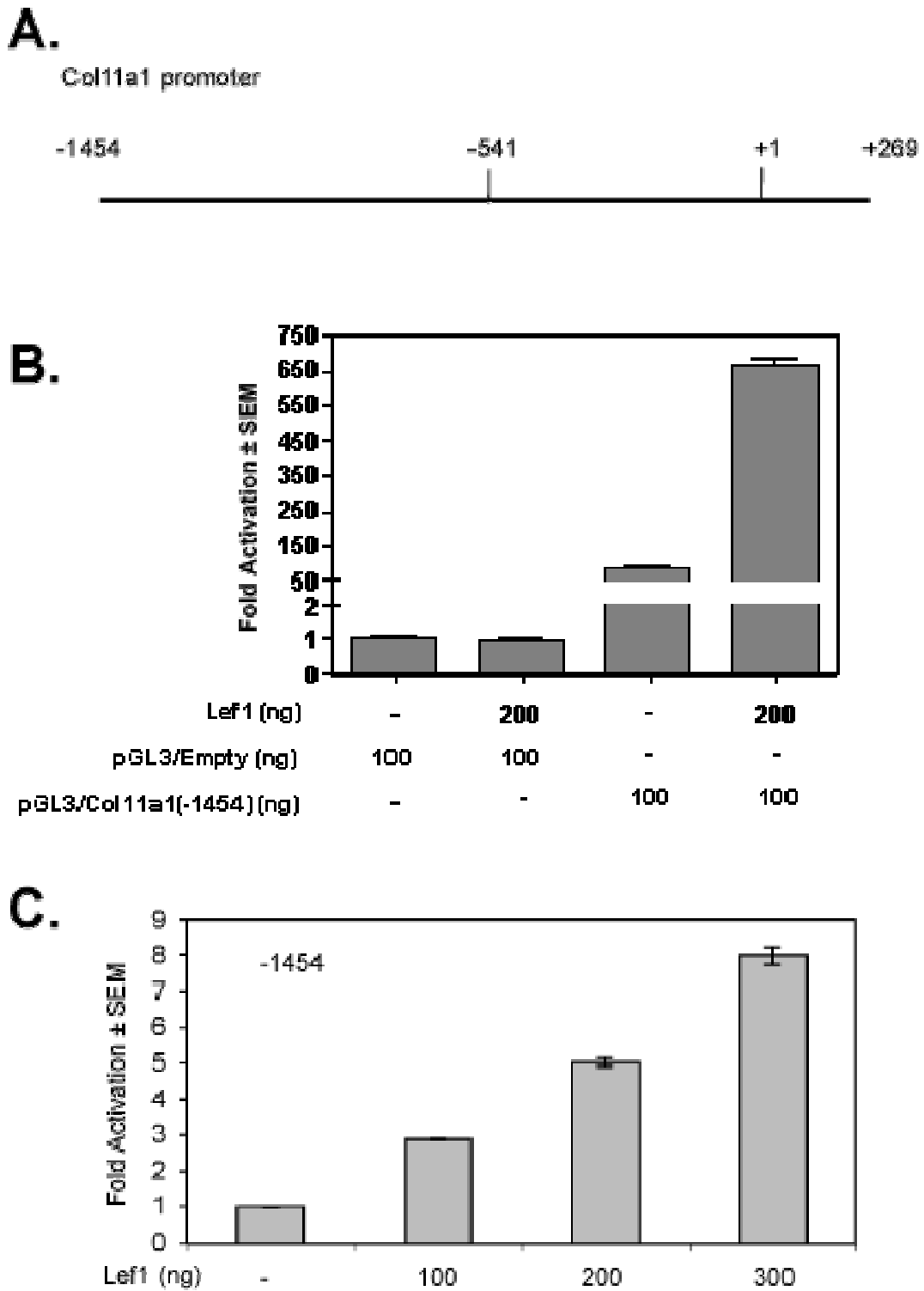




Figure 3

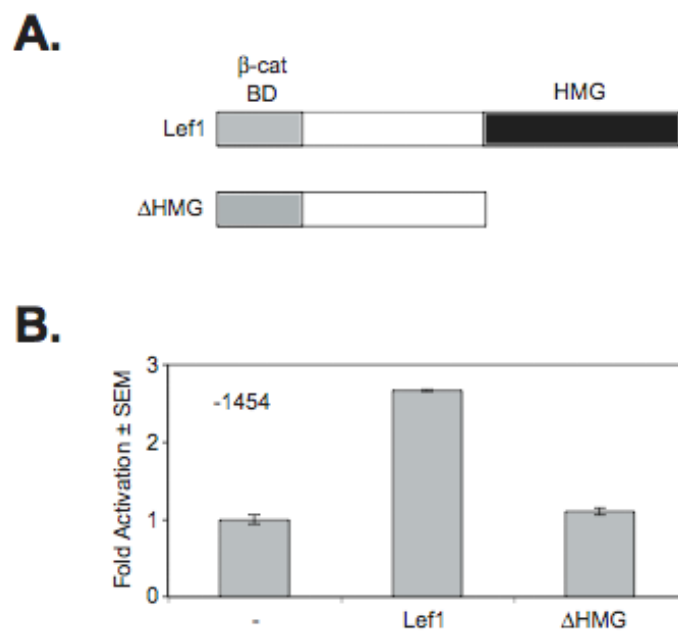


Figure 4

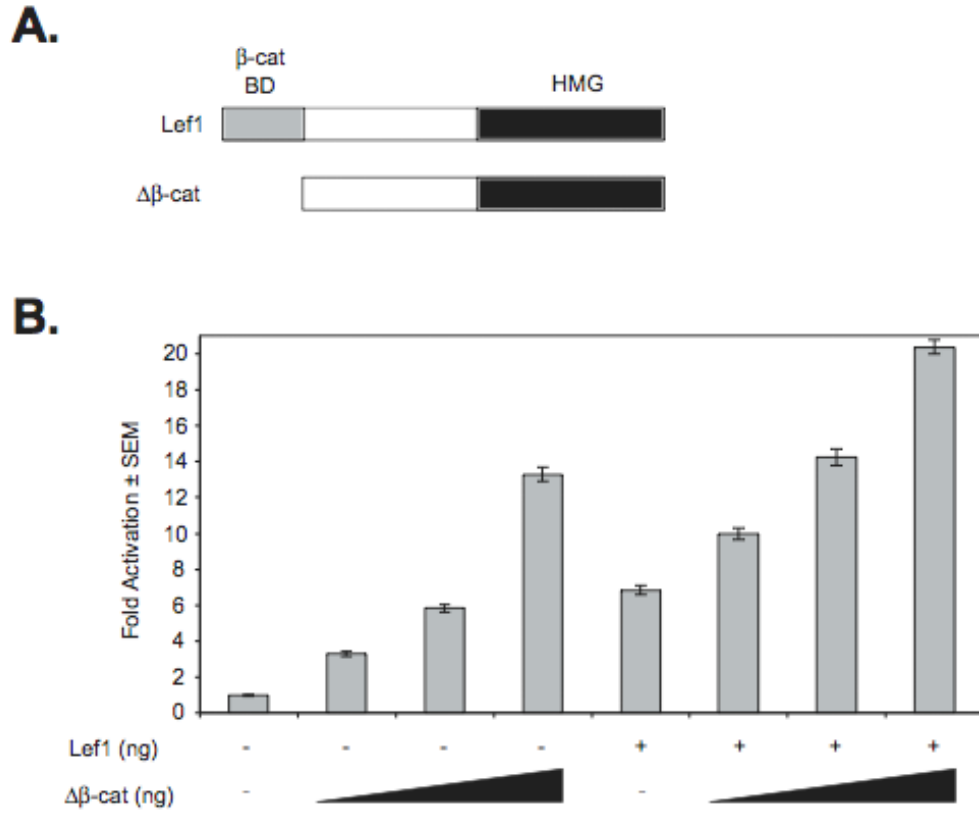


Figure 5

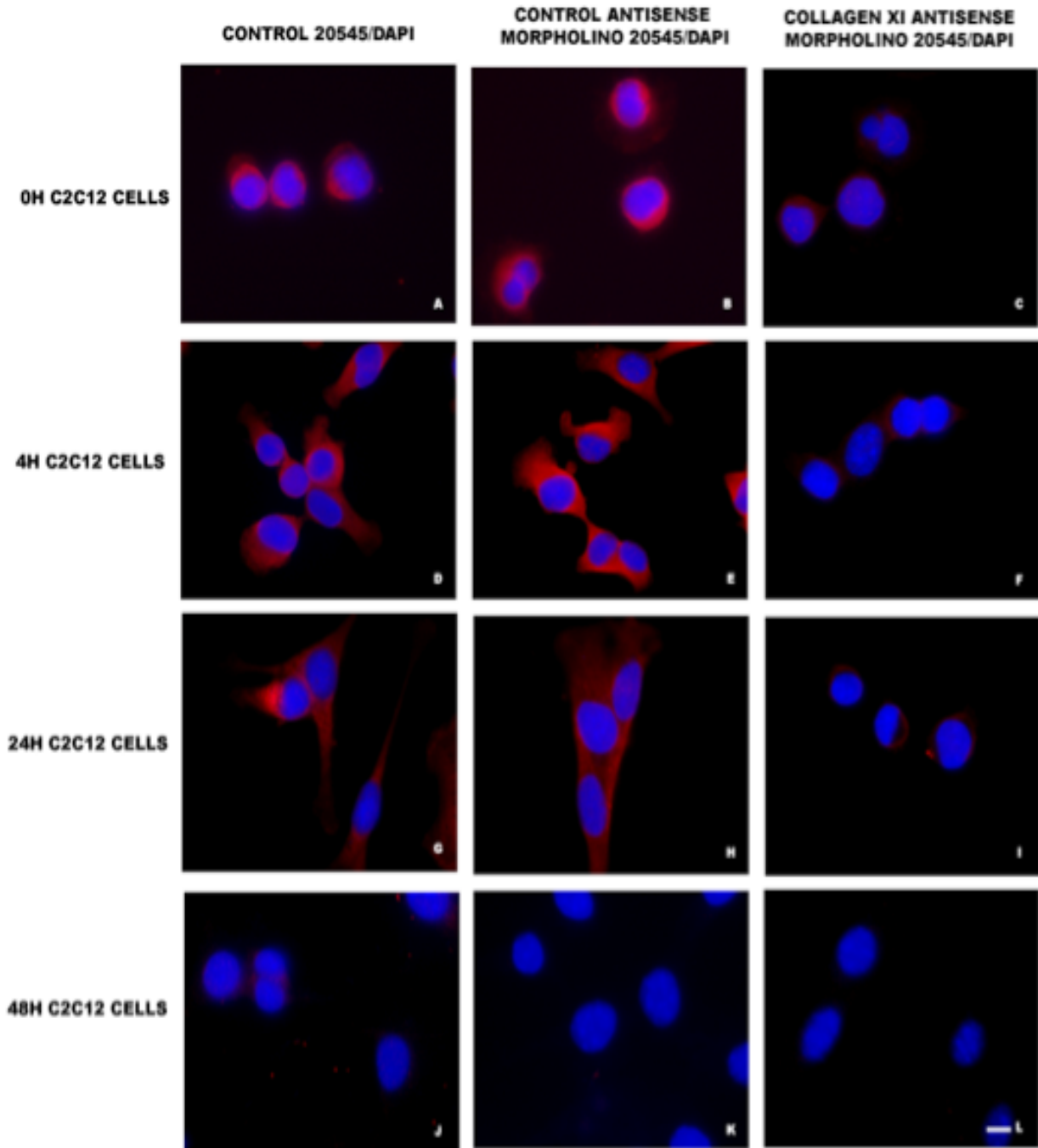


Figure 6

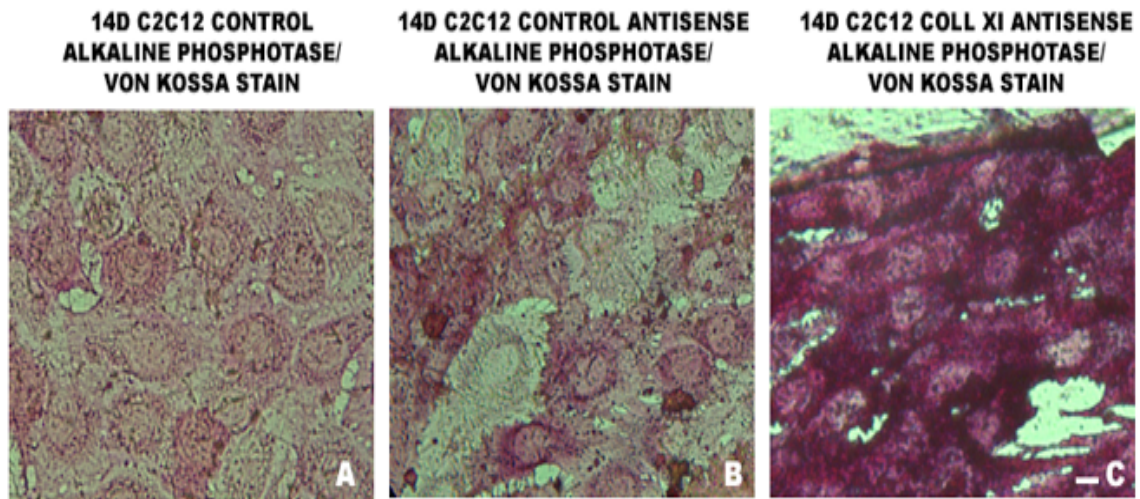


Figure 7

