

## 2006 Governor's Summit on Aging: The Coming of Age

September 12, 2006

Planning and Community Design  
Panel Presentation

11:00-12:15

### Our Challenge

- Keep our communities livable even with changing demographics.
- More specifically, find ways to cope with challenges to independence and quality of life as we age.

## Housing Livability

### 3 Ways of Making Homes Livable For All Ages

1. Modify Existing Home
2. Move Elsewhere
3. Influence the way the community develops around you

# 1. Modify Existing Home

What, Where, and How?

- Universal Design Features
  - wide hallways
  - master bedroom and bath on the 1<sup>st</sup> floor
  - lever handles rather than knobs
  - no steps (even when enter house)
- NORCs, New Homes
- Tools



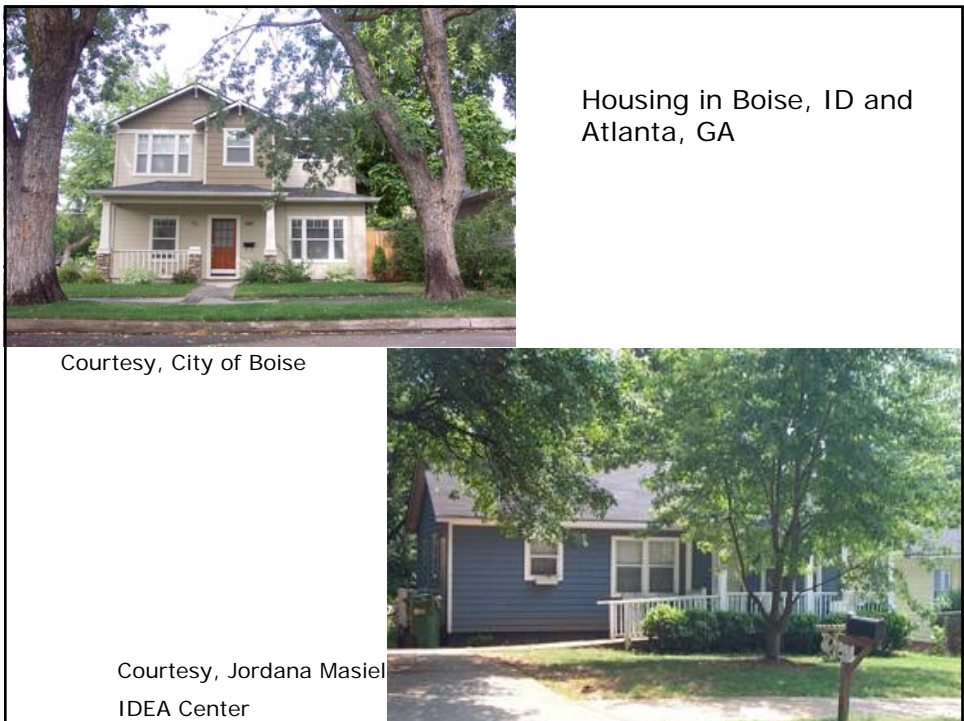
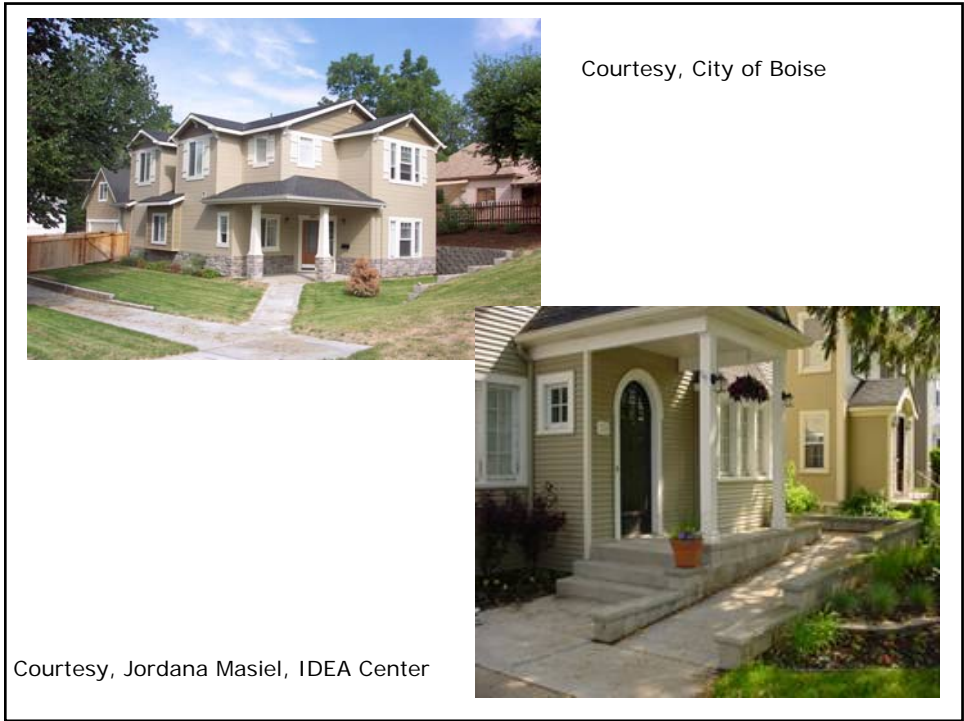
## Housing Communities in Atlanta and Decatur, GA



VS.



Courtesy, Jordana Masiel, IDEA Center



## 2. Move Elsewhere

Examples...

- Homes that meet your needs
- Assisted Living
- Continued Care Retirement Communities
- Skilled Nursing Facilities
- Alzheimers Facilities

3. Influence the way  
the community  
develops around you

—“Age in Place”



- Accessory Units or  
Granny Flats
- Shared Housing
- Seniors only  
complexes

Sisters Villa



Dogwood Plaza



## Transportation

- Fosters independence and connectivity
- A bridge to challenges of independence and quality of life as we age

### Some Transportation Options

- Walking
- Public transit
- Taxis
- Shuttles




Courtesy CTAA




Courtesy CNU


### Accessible Transit



Portland, OR



Lewiston, ID  
Courtesy of COMPASS



San Jose, CA  
Courtesy CNU

### What Planning and Community Design can lead to...

- Recreation opportunities and community involvement
- Prevent social isolation
- In short, building livable communities...



Housing and Transportation Designs can promote and enable connectivity



Courtesy Jordana Masiel, IDEA Center

Housing and Transportation Designs can promote and enable connectivity



Courtesy of CTA

How have other cities, counties, and states formalized their planning for an aging population?

### Howard County, Maryland (e.g., Housing)

Three goals of their Senior Housing Master Plan:

- 1) Provide housing for older adults within stable and attractive communities through maintenance, renovation and modification of existing homes.
- 2) Produce new housing that meets the needs of older adults while not detracting from the existing neighborhoods
- 3) Provide affordable and diverse housing to meet the needs of low and moderate income seniors.

## City of Boston

### Transportation

- Senior Shuttle
- Taxi Discount Coupons
- Kit Clark program
- THE RIDE

### Community Engagement

- Volunteer Opportunities
- Seniors Count!

## Pennsylvania

- Shared Ride Program
  - for Older Persons in rural counties
- Expanded program to Provide Transportation to Persons with Disabilities
  - Using General Revenue Funds, provided an 85% discount in fares to persons with disabilities living in rural areas.
    - estimates 49% of these rides were work-related.

## Federal

- U.S. Representative Jan Schakowsky (D. Ill.) Introduces --The Inclusive Home Design Act, In June 2003.
- On March 17, 2005 she reintroduced The Inclusive Home Design Act.

The bill currently has 39 co-sponsors and is in committees.

Questions?

Comments?

Discussion?

Panel Presentations available at BSU  
Public Policy Center, Institute for  
Urban and Regional Planning  
Webpage:

<http://ppa.boisestate.edu/centerppa/planning-institute.shtml>

#### Bibliography

- AARP Public Policy Institute. 2006. 50.05 A Report to the Nation on Livable Communities: *Creating Environments for Successful Aging*.  
[http://www.aarp.org/research/housing-mobility/inliving/beyond\\_50\\_communities.html](http://www.aarp.org/research/housing-mobility/inliving/beyond_50_communities.html)
- City of Boston, Elderly Commission. 2006.  
<http://www.cityofboston.gov/elderly/default.asp>
- Community Transportation Association of America. 2003. *Senior Transportation: Toolkit and Best Practices* <http://www.ctaa.org/>
- Howard County Maryland Government, Department of Planning and Zoning. December 2004. *Howard County Senior Housing Master Plan*.  
<http://www.co.ho.md.us/DPZ/Community/seniorhousing.htm>
- Internal Revenue Services. 2004. Kastenbergh, Elizabeth and Chasin, Joseph. *Elderly Housing*.  
<http://www.irs.gov/pub/irs-tege/eotopicg04.pdf>
- Thomas – Library of Congress. Inclusive Home Design Act of 2005.  
<http://thomas.loc.gov/cgi-bin/query/z?c109:H.R.1441.IH>:
- U.S. Department of Health and Humans Services. Barbara A. Ormond, Kirsten J. Black, Jane Tilly and Seema Thomas. Urban Institute. November 2004. *Supportive Services Programs in Naturally Occurring Retirement Communities*.  
<http://aspe.hhs.gov/daltcp/reports/NORCssp.htm#findings>
- U.S. House of Representatives. Jan Schakowsky. Press Release  
[http://www.house.gov/schakowsky/press2003/pr06\\_05\\_2003visitability.html](http://www.house.gov/schakowsky/press2003/pr06_05_2003visitability.html)

**Photos Courtesy of:**

- City of Boise, Planning and Development Services, Historic Preservation.
- COMPASS -Community Planning Association of Southwest
- CTAA - Community Transportation Association of America.  
<http://www.ctaa.org/>
- CNU -Congress for New Urbanism  
<http://www.cnu.org/index.cfm>
- Maisel, Jordana (IDEA Center, Buffalo, NY). 2006. *Visitability as an approach to inclusive housing*. Presentation at Universal Design and Visitability: From Accessibility to Zoning Conference Thursday July 13.
- And me!

Thanks also to our local U.S. Department of Housing and Urban Development office which provided information and locations of local housing developments.

**Susan Mason, Ph.D.**

Director, Graduate Certificate in Community and  
Regional Planning

Assistant Professor, Departments of Political  
Science and Public Policy & Administration

Boise State University

1910 University Dr

Boise, ID 83725-1935

Phone: (208) 426-2658

Email: [susanmason@boisestate.edu](mailto:susanmason@boisestate.edu)