A photograph of the Boise College building, a large red brick structure with a prominent central tower. The building features several large, multi-paned windows. In the foreground, a green lawn is visible with several people walking. The sky is blue, and there are some trees and bushes around the building. The text "BOISE COLLEGE" is overlaid in white, bold, sans-serif capital letters in the upper right portion of the image.

BOISE COLLEGE

CATALOG 1966-1967

COLLEGE CALENDAR

Fall Semester, 1966-1967

*Last Date to Complete All Admission Requirements (to be able to Register at Regular Registration Times)	5:00 P.M., Mon., Aug. 1, 1966
New Faculty Orientation	from 9:00 A.M., Thurs. Aug. 18 to 5:00 P.M., Fri., Aug. 19
Residence Halls Open	1:00 P.M., Sun., Aug. 21
General Faculty Meeting (Dinner in Student Union)	6:30 P.M.—10:00 P.M., Sun., Aug. 21 to 10:00 P.M.,
Freshman Orientation (Gymnasium)	8:00-9:30 A.M., Mon., Aug. 22
Pre-registration Counseling by Appointment	from 8:00 A.M., Mon., Aug. 22 to 5:00 P.M., Tues., Aug. 23
Late ACT Test (Little Theatre) (for students who have not taken the ACT tests)	10:00 A.M.-2:30 P.M., Mon., Aug. 22
Math Placement Test (Little Theatre) (for Engineering and Science Majors)	3:30 P.M.-5:30 P.M., Mon., Aug. 22
Foreign Language Placement Test (A204) (for students who have foreign language backgrounds and wish to continue in the same foreign language)	8:00 A.M.-5:00 P.M., Tues., Aug. 23
Registration for Sophomores, Juniors, Seniors (Gymnasium)	Wed., Aug. 24
Registration for Freshman (Gymnasium)	Thurs., Aug. 25 to 3:00 P.M., Fri., Aug. 26
Evening School Registration (Gymnasium)	from 7:00-9:30 P.M., Fri., Aug. 26 and 9:00-11:30 A.M., Sat., Aug. 27
Class Begin	Mon., Aug. 29
Labor Day (Holiday)	Mon., Sept. 5
Last Date for Adding New Courses for Credit	Fri., Sept. 16
Last Date for Withdrawal without Penalty for Failing Work	Fri., Sept. 16
Annual Homecoming	Sat., Oct. 15
Last date for Removal of Incompletes for Previous Semester	Fri., Oct. 28
End of Mid-Semester	Fri., Oct. 28
Thanksgiving Vacation	from 10:00 P.M., Wed., Nov. 23 to 7:00 A.M., Mon., Nov. 28
Last Date to Withdraw from Classes	Wed., Nov. 30
Closed Period (no activities to be scheduled until end semester)	Fri., Dec. 9
Semester Examinations	from 8:00 A.M., Mon., Dec. 19 to 5:00 P.M., Wed., Dec. 21
Residence Halls Close	6:00 P.M., Thurs., Dec. 22
Christmas Vacation	from 5:00 P.M., Wed., Dec. 21 to 7:00 A.M., Mon., Jan. 9, 1967

*Students who complete after this date will be charged a late fee and scheduled after regular registration times.

(See inside back cover for Spring Semester 1967 and Summer Sessions 1967 Calendar)

VOL. XXXIV

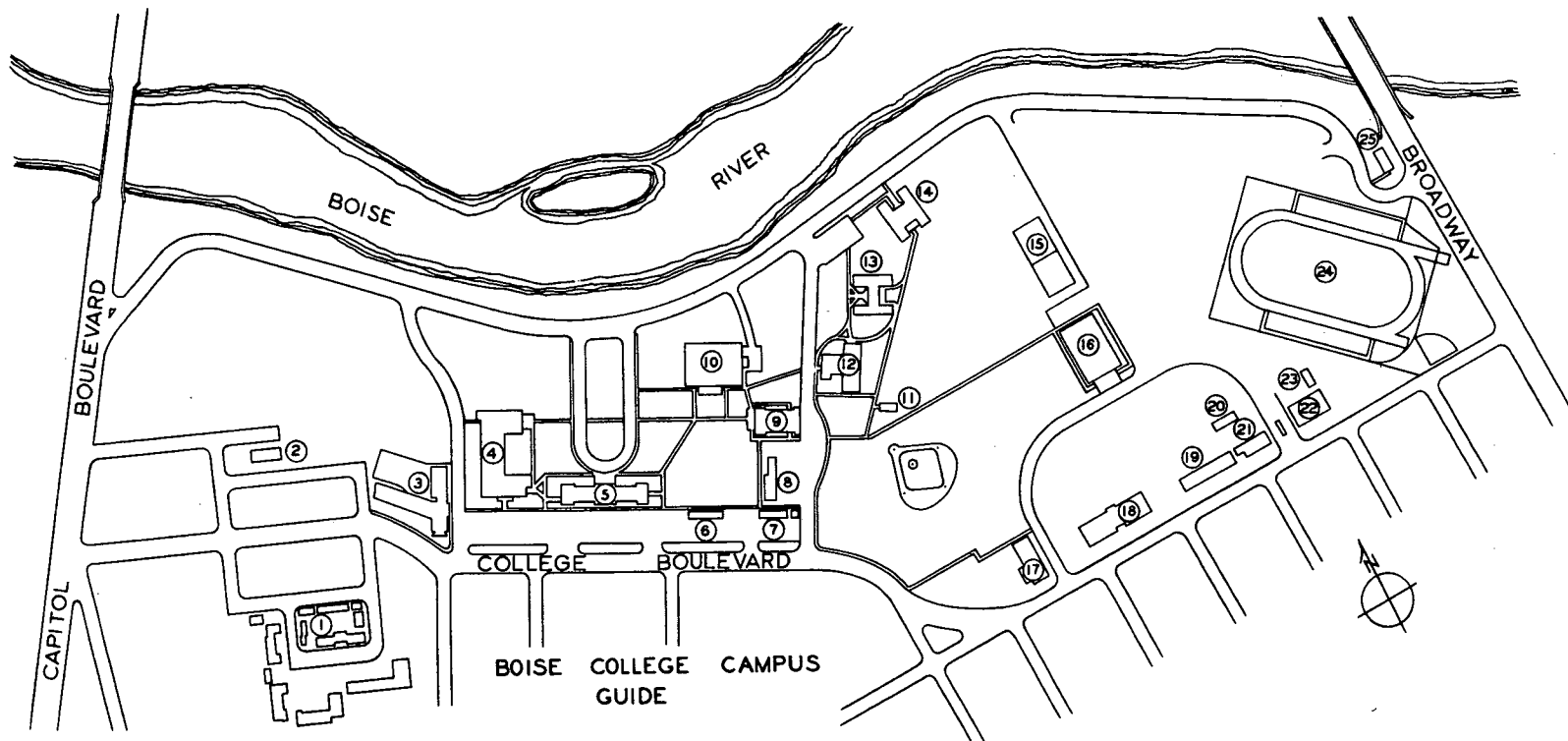
No. 1

BOISE COLLEGE
including the
JUNIOR COLLEGE DIVISION
and
THE AREA VOCATIONAL SCHOOL



CATALOG
1966-1967

BOISE, IDAHO



BOISE COLLEGE CAMPUS
GUIDE

- | | |
|----------------------------------|-------------------------------------|
| 1. College Courts | 13. Driscoll Hall (Men's Dorm) |
| 2. Health Center | 14. Morrison Hall (Women's Dorm) |
| 3. Campus School | 15. Tennis Courts |
| 4. Science Building | 16. Gymnasium |
| 5. Administration Building | 17. Auto Mechanics & Ceramics Shops |
| 6. T-1, Print Shop, Publications | 18. Technical-Education Building |
| 7. Heating Plant & Green House | 19. Machine & Welding Shops |
| 8. T-2, | 20. T-440 |
| 9. Auditorium | 21. Woodworking Shop |
| 10. Library-Classroom Building | 22. Auto Body Shop |
| 11. Band Building | 23. Storage |
| 12. Student Union | 24. Bronco Stadium |

TABLE OF CONTENTS

Calendars	Inside Front and Back Covers
Map of Campus	5
Board of Trustees	5
Administrative Officers	5
Division Chairmen	6
Faculty	7
PART I	17
General Information	19
Tuition and Fees	34
PART II	39
Admission Requirements—Junior College	40
Regulations—Junior College	43
Graduation Requirements—Junior College	46
Admission, Regulations and Graduation Requirements Senior College	47
PART III	51
Junior College Curricula	52
Lower Division Curricula	52
Semi-professional Curricula	65
Vocational Curricula	66
Technical Curricula	70
Senior College Curricula	78
PART IV	127
Course Descriptions & Course Numbering System	128
Business and Economics Division	129
Humanities Division	137
Life Science Division	153
Physical Science Division	163
Social Science Division	171
Vocational-Technical Education Division	181
Register of Students	197
INDEX	200



Graduates look to the future with confidence.

BOISE COLLEGE

BOARD OF TRUSTEES

R. S. OVERSTREET
JOHN P. TATE

JAMES D. MCCLARY
DONALD M. DAY

RALPH J. COMSTOCK, JR.

OFFICERS OF THE BOARD

R. S. OVERSTREET *Chairman*
JOHN P. TATE *Vice-Chairman*
DWANE R. KERN *Secretary-Treasurer*

ADMINISTRATIVE OFFICERS

EUGENE B. CHAFFEE *President*
B.A., M.A. Litt. D., LL.D.
W. L. GOTTENBERG *Vice President*
B.A., M.A.
ACEL H. CHATBURN *Dean of Faculty*
B.A., M.A., Ed.D.
J. ALFRED MCCAUSLIN *Dean of Student Personnel Services*
B.A., M.A., Ed.D.
DWANE R. KERN *Business Manager*
B.A.
JAMES R. WOLFE *Assistant Dean of Faculty*
B.S., M.B.A.
FREDERICK J. KELLER *Director of Data Processing*
B.A.
HELEN E. MOORE *Dean of Women*
B.A., M.A.
EDWIN E. WILKINSON *Dean of Men*
B.A., M.A.
ALICE H. HATTON *Registrar*
B.A.
SAMUEL B. RIGHTER *Director of Admissions*
B.S., M.Ed.
MARY T. HERSHEY *Registrar Emeritus*
B.A.
THOMAS H. HAZZARD *Director of Buildings and Services*
B.S.
ROBERT D. BAKER *Administrative Assistant to Vice President*
B.S.
GORDON G. PHILLIPS *Administrative Assistant, Business Office*
A.A., B.S.
LUCILLE COPPLE *Chief Accountant*
JACQUELYN CASSELL *Secretary to the President*
ROSA E. PUTNAM *Recorder*
LAVERE ARNOLD *Director, Student Union*
MARGUERITE GIBBENS *Director, Chapman House*
GLESSIE CORBIN *Director, Driscoll Hall*
NELL ELISON *Director, Falk House*
ADDIE WESCOTT *Director, Morrison Hall*
ELVA HOPPER *Director, West Hall*

DIVISION CHAIRMEN

ROBERT E. ROSE.....	<i>Business and Economics</i>
B.A., M.A., Ph.D.	
ADA Y. HATCH.....	<i>Humanities</i>
B.A., M.A.	
DONALD J. OBEE.....	<i>Life Sciences</i>
B.A., M.A., Ph.D.	
JOHN L. PHILLIPS, JR.....	<i>Social Sciences</i>
B.A., M.A., Ph.D.	
JOSEPH B. SPULNIK.....	<i>Physical Sciences</i>
B.S., M.S., Ph.D.	
CLAUDE WALN.....	<i>Vocational-Technical</i>
B.E.	

LIBRARY

RUTH MCBIRNEY.....	<i>Librarian</i>
B.A., B.A. in Librarianship	
MARCIA SIGLER.....	<i>Assistant Librarian</i>
A.A., B.A., B.S., M.L.S.	
EVELYN EVERTS.....	<i>Assistant Librarian</i>
B.S., B.A. in Librarianship	
LOIS K. ORMSBY.....	<i>Assistant Librarian</i>
B.A., M.A., M.S. in Library Science	

MEDICAL SERVICE

BRUCE C. BUDGE.....	<i>Physician</i>
M.D.	
JERINE BROWN.....	<i>Nurse</i>
R.N.	

BOISE COLLEGE

FACULTY

1965-66

(The date in parenthesis is the time of first appointment)

- ALLISON, THELMA F. *Home Economics* (1946)
B.S. (H.Ec.), Utah State Agricultural College; University of Utah; Brigham Young University; M.S. (H.Ec.Ed.), Utah State Agricultural College; Carbon College; Oregon State University.
- BAKER, ROBERT D. *Administrative Assistant to the Vice President* (1965)
B.S., Montana State College
- BECKWITH, JOHN A. *English* (1965)
B.A., Gooding College; M.A., University of Idaho; University of California at Los Angeles, American Institute of Gemology at Los Angeles.
- BELKNAP, H. WILLIAM. *Life Sciences* (1959)
B.S., College of Idaho; M.S., Louisiana State University; Arizona State University; University of Oregon.
- BEST, JOHN H. *Orchestra, Cello, Theory* (1947)
B.S., University of Idaho; M.A., Colorado State College of Education; Cello Pupil of Elias Trustman and Joseph Wezels; Composition and Theory, pupil of J. DeForest Cline and Henry Trustman Ginsburg.
- BOYLES, JEAN. *Physical Education* (1949-57; 1962)
A.B., University of California; M.S., University of Colorado.
- BRATT, C. GRIFFITH. *Theory, Choir, Organ* (1946)
Mus.M., Artist's diploma in Organ, Peabody Conservatory of Music, Baltimore, Md.; A.A.G.O., University of Baltimore; John Hopkins University; University of Utah, Composer in residence.
- BRONSON, WILLIAM S. *Psychology* (1954)
B.A., M.A., University of Idaho; Washington State University; Ed.D., University of Colorado.
- BUCHANAN, JAMES R. *Welding* (1959)
Heli-arc School of Welding for Bechtel Corporation, San Francisco; Heli-arc School, Atomic Energy Commission, Arco, Idaho, and Paducah, Kentucky; Vocational Education, National Defense, Boise; Boise Junior College; Idaho State College.
- BUCK, ELSIE M. *Mathematics* (1932-34; 1937)
B.A., M.A., Ph.D., University of California; University of Chicago; University of Washington.
- CANAVAN, THOMAS J. *Technical Education* (1964)
A.B., University of Illinois
- CARSON, WILLIAM J. *Business* (1963)
B.S., University of Notre Dame; M.B.A., University of Denver; University of Wyoming.
- CAYLOR, JOHN A. *History* (1965)
A.B., Nebraska Teachers' College; M.A., Ph.D., University of Nebraska.
- CHAFFEE, EUGENE B. *President* (1932)
B.A., Occidental College; M.A., University of California at Berkeley; George Washington University; Litt.D., College of Idaho LL.D., University of Idaho.
- CHANDLER, LUANNE. *Secretarial Science* (1964)
Idaho State College; B.A., San Jose State College; M.Ed., Montana State University; University of Nevada; University of Idaho.

- CHATBURN, ACEL H. *Dean of Faculty* (1944)
B.A., College of Idaho; University of Idaho; M.A., University of Colorado; Ed. D., Washington State University; University of California at Berkeley.
- COFIELD, DEWEY H. *Electronics* (1961)
University of Idaho; Idaho State College
- CROOKS, ALAN F. *English* (1965)
Boise Junior College; B.A., College of Idaho; M.A., Utah State University.
- DAHM, NORMAN F. *Engineering* (1953)
Colorado College; B.S., M.Ed., University of Colorado; Agricultural and Mechanical College of Texas; University of Washington; Bucknell University.
- DALTON, JACK L. *Chemistry* (1958)
B.S., Nebraska State Teachers College; M.S., Kansas State University of Agriculture and Applied Science; Kansas State College.
- DAVIDSON NANCY S. *Practical Nursing* (1963)
B.S., University of Vermont; Idaho State University.
- DAVIS, CHARLES G. *English* (1963)
A.B., Middlebury College, Vermont; M.A., University of California at Berkeley.
- DE NEUFVILLE, ROBERT *German, French* (1940)
B.A., M.A., New College, Oxford; Dr. Jr., Marburg University; Geneva University; Berlin University; Columbia University; Middlebury College.
- DEWEY, JULIA MAE *Biology* (1965)
A.A., Boise Junior College; B.A., M.A., University of California at Berkeley.
- DUGGER, JEROLD O. *Education* (1964)
A.A., Scottsbluff Junior College; B.A., Hastings College; M.A., Ed.D., Colorado State College; University of Colorado.
- EDLEFSEN, CLISBY T. *Business* (1939)
B.A., College of Idaho; M.S.(Ed), University of Idaho; Armstrong Business College, Berkeley, California; Ed.D., Stanford University.
- EMERSON, J. CALVIN *Chemistry* (1933-40; 1960)
A.B., Northwest Nazarene College; B.S., College of Idaho; M.S., University of Idaho; University of Washington; Oregon State University.
- EVERTS, EVELYN *Library* (1957)
Bellingham Normal, Washington; B.S., B.A., in Librarianship, University of Washington; Washington State University.
- FLEMING, NANCY L. *Nursing* (1963)
B.S., University of Nebraska College of Medicine.
- FLESHMAN, MILTON B. *Auto Mechanics* (1959)
Idaho State College; Carter Carburetion Course; Delco-Remy Auto Electric Class; Allen Tune-up Equipment; Boise Junior College; Briggs & Stratton Factory Service School, Portland, Oregon; United Motors Service Courses.
- FRITCHMAN, HARRY K., II *Life Sciences* (1954)
A.A., Boise Junior College; B.A., M.A., Ph.D., University of California at Berkeley; University of Oregon.
- FUEHRER, ALBERT M. *Auto Mechanics* (1965)
Northwest Nazarene College; Specialized Automotive Training

- FUNG, WILLIAM Y. *Philosophy* (1961)
A.B. Lingnan University; M.A., University of Southern California; Union Theological Seminary, New York City; Ph.D., New York University.
- GLENDINNING, MOLLIE *Practical Nursing* (1964)
R.N., Wyckoff Heights Hospital School of Nursing; U.S. Navy Nurse Corps; Idaho State University.
- GOODWIN, KATHRYN *Nursing* (1965)
Lewis and Clark College; Oregon State University; B.S., University of Oregon.
- GOTTENBERG, W. L. *Vice President* (1947)
Minot State Teachers College; St. Olaf College; B.A., University of North Dakota; M.A., University of Montana; University of Oregon; University of Washington; La Escuela Interamericana, Saltillo, Mexico; U.S. Department of State Education Specialist to the Caribbean and Latin America.
- HAGER, JOHN F. *Machine Shop* (1954)
Warren Trade School, Los Angeles; Idaho State College.
- HAHN, CLAYTON W. *Engineering* (1948-52, 1963)
University of Nebraska; B.S. (M.E.), University of Colorado; University of Montana; Montana State College; University of California at Los Angeles; University of Southern California.
- HALL, WILLIAM W. *History* (1965)
Hotchkiss School; A.B., Princeton; B.D., Union Theological Seminary; Ph.D., Yale.
- HARRIS, ARDEN E. *Office Machine Repair* (1965)
Special Training in Office Machine Repair.
- HART, MARY ALICE *English* (1965)
B.S., M.A., Utah State University.
- HART, RICHARD K. *Economics* (1965)
B.S., Utah State University; Utah State University.
- HATCH, ADA Y. *English* (1932)
B.A., M.A., University of Idaho; University of California; University of Chicago; University of Washington; independent study in England.
- HATTON, ALICE H. *Registrar* (1959)
B.A., University of Washington; Colorado State College.
- HEAZLE, WILLIAM C. *Accounting* (1965)
Boise Junior College; B.B.A., University of Oregon; C.P.A.
- HIBBS, ROBERT A. *Physical Sciences* (1965)
B.S., M.S., University of Florida; Ph.D., Washington State University.
- HILL, KENNETH L. *Director, Instructional Materials Center* (1962)
B.S., Montana State College; M.S.(Ed.), University of Washington; University of Idaho; Eastern Washington State College.
- HILL, RUTH K. *Psychology* (1965)
Baptist Missionary Training School; Chicago; Shurtleff College, Alton, Illinois; Ph.B., University of Chicago; Ph.D., University of Minnesota; B.D., Colgate Rochester Divinity School; University of Minnesota.
- HOUST, HENRY E. *Drill Team* (1965)
B.S., College of Idaho.

- HOYER, DORIS *Education* (1965)
B.S., M.S. (Ed), M.A., University of Idaho.
- HUFF, HOWARD L. *Art* (1965)
Diploma, Boise Junior College; B.A., College of Idaho; University of Idaho.
- HUNT, ELMER E., JR. *Mathematics* (1959)
B.A., M.Ed., Washington State University; Oregon State University; University of Georgia.
- JOHNSON, HELEN R. *Secretarial Science* (1955)
B.A., Northwest Nazarene College; University of Idaho; Oregon State University; University of Washington; M.A., College of Idaho; University of California at Berkeley; Arizona State University.
- KELLER, FREDERICK J. *Director of Data Processing* (1966)
B.A. Michigan State University.
- KELLER, MARY LOUISE *Nursing Education* (1959)
Diploma, Samaritan Hospital School of Nursing, Nampa, Idaho; B.S., Northwest Nazarene College; University of Washington; University of California at Los Angeles.
- *KELLOGG, FREDERICK *History* (1962)
B.A., Stanford University; M.A., University of Southern California; University of California at Berkeley.
- **KELLY, DORIS *Nursing Education* (1958)
Diploma, Cook County School of Nursing; University of Washington; B.A., University of Denver; University of Colorado; University of California at Los Angeles.
- KERN, DWANE R. *Business Manager* (1960)
B.A., College of Idaho; University of Omaha.
- KNOWLTON, LEO L. *Mid-Management* (1965)
B.S., M.S., University of Idaho; University of Oregon.
- KRIGBAUM, NOEL *Carpentry and Cabinetmaking* (1955)
Electricians School, Navy; Idaho State College.
- LEE, DOROTHY *Secretarial Science* (1953)
B.Sc. in Ed., University of Nebraska; Denver University; University of Iowa; University of Pittsburgh; M.A., College of Idaho; State University of New York, College at Plattsburg; University of Idaho.
- LEVITT, MONTE L. *Dental Asst. Program* (1965)
University of North Dakota; D.D.S., Loyola University.
- LEWIS, RAY *Physical Education* (1956)
Boise Junior College; B.S. (Ed.), M.Ed., University of Idaho.
- LONSDALE, KATHLEEN E. *Nursing* (1965)
B.S., M.S., University of Washington.
- LOVIN, HUGH T. *History* (1965)
B.A., Idaho State College; M.A., Washington State University; Ph.D., University of Washington.
- MACINNIS, JEAN *Dental Assisting* (1962)
C.D.A., University of North Carolina; Dental Assistant—20 years practice; Dental Office Administration and Human Relations and Oral Roentgenology Courses sponsored by Idaho Dental Association; Boise Junior College; Idaho State University.

*Leave of Absence, 1965-66.

**Sabbatical Leave, 1965-66.

- MADSON, GORDON.....*English, Speech* (1964)
Carroll College; University of Portland; B.A., University of Washington; M.A., University of California; University of Southern California.
- MCBIRNEY, RUTH.....*Library* (1940-42, 1953)
Boise Junior College; A.B. Whitman College; B.A. in Librarianship, University of Washington; Columbia University; University of London; University of California at Berkeley; Rutgers University.
- MCCAUSLIN, J. ALFRED *Dean of Student Personnel Services, Psychology* (1965)
B.A., Rollins College; M.A., M.S., Pennsylvania State University; Ed.D., University of Maryland.
- MCCAUSLIN, PHYLLIS A.....*English* (1965)
Marywood College; B.S., Mansfield State College; Pennsylvania State University; M.Ed., Bloomsburg State College.
- METCALF, NEAL.....*English* (1964)
Humboldt State College; B.A., Idaho State College; M.A., San Francisco State College.
- MEYER, CARROLL J.....*Piano* (1948)
B.M., University of Michigan; Pupil of Ethel Leginska and Cecile de Horvath; University of Iowa.
- MILES, FLORENCE M.....*Nursing Education* (1955)
Lewiston State Normal; Diploma, School of Nursing, St. Luke's Hospital; B.S., N.E., M.N., University of Washington; University of California at Los Angeles.
- MILLER, ROBERT T.....*English, Debate, Business Law* (1963)
B.S., University of Oregon; LL.B., Columbia University; University of Idaho.
- MITCHELL, KATHRYN E.....*Piano, Violin* (1932-38; 1939)
Institute of Musical Art, New York; Pupil of Franz Mairecker at the Meister Schule, Statts Akademie, Vienna, Austria; studied with Louis Persinger and with Henri Temianka.
- MOORE, HELEN E.....*Dean of Women, English* (1947)
B.A., Drake University; M.A., University of Washington; University of Utrecht, Netherlands.
- MOORE, POLLY K.....*Home Economics* (1962)
B.S., M.S., Ph.D., Pennsylvania State College.
- NELSON, PAUL D.....*Geology, Vocational Related Subjects* (1961)
B.S., M.S., Kansas State University; Idaho State University.
- OAKES, DONALD.....*Music* (1964)
College of Idaho; B.M., M.M., Northwestern University.
- OBEE, DONALD J.....*Life Sciences* (1946)
Kansas City University; B.A., M.A., Ph.D., University of Kansas; Oregon State University; University of Oregon School of Marine Biology; Arizona State University; University of North Carolina.
- OGDEN, JOHN T.....*Welding* (1965)
Diploma, Boise Junior College; Navy Training Schools; Special Training and Experience in Welding.
- ORAVEZ, DAVID L.....*Art* (1964)
B.S., M.A., M.F.A., University of Wisconsin; Summer School of Painting at Satutuck, Michigan.

- ORMSBY, LOIS K. *Assistant Librarian* (1965)
Linfield College; Diploma, Oregon Normal School; B.A., Drake University; University of Washington; M.A., University of Southern California; M.S., Syracuse University.
- OURADA, PATRICIA K. *History* (1962)
B.A., College of Saint Catherine; M.A., University of Colorado; University of Laval; University of Michigan.
- PALMQUIST, MARJORIE J. *Psychology* (1965)
B.S., State College of Iowa; University of Rochester; M.A., State University of Iowa; Ph.D., Ohio State University; University of London; University of California, Berkeley.
- PECK, LOUIS A. *Art* (1955)
Boise Junior College; B.A., College of Idaho; University of California, Santa Barbara; M.S., Utah State University; Rex Brandt School of Art.
- PERRIN, JACK M. *Physical Education* (1964)
B.S., M.A., Northeast Missouri State Teachers College.
- PETERSON, AVERY F. *Political Science* (1965)
B.S., Georgetown University; Graduate, National War College; University of Idaho; American Foreign Service Career and Deputy Asst. Secretary of State; University of British Columbia.
- PETERSON, ELLIS RAY. *Chemistry, Physics* (1964)
Snow Junior College; B.S., M.S., Utah State University; Ph.D., Washington State University.
- PHILLIPS, GORDON G. *Administrative Assistant* (1964)
A.A., Boise Junior College; B.S., University of Colorado.
- PHILLIPS, JOHN L., JR. *Psychology* (1954)
B.A., M.A., Reed College; Ph.D., University of Utah; University of Idaho; Beloit College; University of Washington; University of California.
- POWER, CAMILLE B. *Spanish, French* (1932-35; 1936-51; 1954)
B.A., James Millikin University; M.A., University of Illinois; Diplome, Universite de Poitiers, Institut d'Etudes Francaises de Touraine, Tours, France; University of Chicago; University of Mexico; University of Washington; Diploma, Colegio Mayor Universitario de San Pablo, Madrid; Monterey Institute of Foreign Studies.
- RIGHTER, SAMUEL B. *Director of Admissions* (1965)
B.S., University of Oregon; M.Ed., University of Portland.
- ROE, HAZEL MARY. *Secretarial Science* (1942-44; 1947)
B.A., M.A., University of Idaho; Northwestern University; University of Washington; Oregon State College; independent study in Peru and Chile.
- ROSE, ROBERT E. *Business* (1953)
Culver-Stockton College; B.A., M.A., Colorado State College; University of Denver; Ph.D., State University of Iowa.
- ROTZ, H. WELTON. *Sociology* (1965)
B.A., Hastings College, Nebraska; B.D., McCormick Theological Seminary, Chicago; Ph.D., Cornell University; University of Washington.
- SATTERFIELD, MURRAY. *Coach, Physical Education* (1965)
Idaho State University; B.S., University of Utah.

- SCHEFFER, MARTIN W. *Sociology* (1964)
A.A., Diablo Valley College; B.S., M.S., University of Oregon;
University of California; University of Oregon; Emory Univer-
sity.
- SCHWARTZ, J. ROY *English* (1940)
B.S., M.A., University of Oregon; University of Utah; indepen-
dent study in England.
- SCUDDER, DUSTON R. *Distributive Education* (1964)
B.S., B.A., M.A., University of Denver; University of Colorado;
Colorado State University.
- SHANKWEILER, WILLIAM E. *Speech, Drama* (1956)
Wright Junior College; B.F.A., M.F.A., Goodman Memorial
Theater; Loyola University; Ph.D., University of Denver.
- SIEBER, DONALD J. *Electronics* (1963)
U.S. Army Signal Corps; Burroughs Corporation; Montronics;
Philco Corporation.
- SIGLER, MARCIA *Library* (1962)
A.A., Boise Junior College; B.A., Ohio Wesleyan University;
B.S., M.L.S., University of California at Berkeley.
- SMART, FRANK H. *Mathematics* (1958)
B.A., M.A., Colorado State College.
- SMITH, CANFIELD F. *History* (1965)
Willamette University; B.A., University of Washington; San
Francisco State College; Pacific Lutheran University; M.A., Uni-
versity of Puget Sound.
- SMITH, LYLE *Coach, Physical Education* (1946)
B.S. (Ed.), M.S. (Ed.), University of Idaho.
- SNELL, HAROLD *Auto Mechanics* (1958)
Allen Auto Electric, Boise; Carter Carburetor, Pendleton, Ore-
gon; Chrysler Motor Corporation, Detroit, Michigan; General
Motors Hydramatic Transmission and Hudson Motor Car Com-
pany, Detroit, Michigan; Idaho State College; Oregon State
University; General Motors Training Center; Chrysler Train-
ing Center, Los Angeles.
- SPENCE, PENINAH *English* (1959)
B.A., University of Idaho; University of California; Stanford
University.
- SPULNIK, JOSEPH B. *Chemistry* (1941)
B.S., M.S., Ph.D., Oregon State University; Reed College; Port-
land State College.
- STANDING, GEORGIA V. *Voice, Speech* (1963)
B.F.A., M.F.A., University of Utah; Curtis Institute of Music,
Philadelphia; Private Study in Europe; Soloist with various na-
tional operas and symphonies.
- STEARNS, JEANNE G. *Physics* (1946)
B.S., M.S., Tulane University; University of Pittsburgh; Uni-
versity of Colorado; University of Idaho; Montana State College;
University of Wyoming.
- STEEL, LAVAR *Ceramics, Art* (1959)
B.S., M.S., Brigham Young University.
- SYLVESTER, ROBERT B. *History* (1963)
A.A., Boise Junior College; B.A., M.A., University of California
at Santa Barbara.

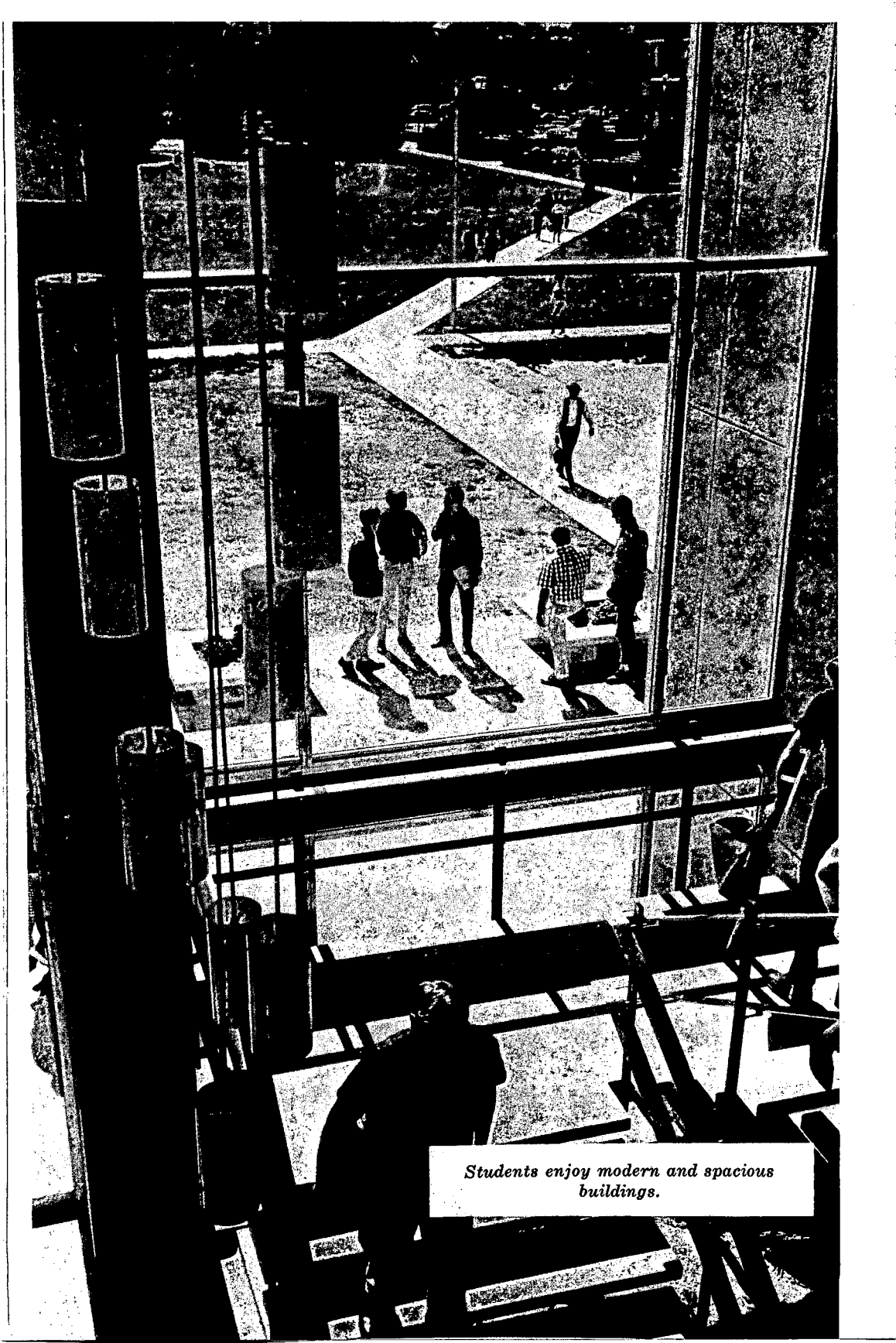
- THOMSON, HELEN.....*Publications, Journalism* (1962)
Indiana University; Editor, Indiana State Board of Health Monthly; Oil and Gas Journal, Tulsa, Oklahoma; Public Relations, City of Boise.
- TIPTON, CARL W.....*Business* (1965)
Iowa Wesleyan College; University of Washington; George Washington University; M.B.A., University of Chicago; University of Idaho.
- TOMPKINS, JAMES W.....*Vocational Related Subjects* (1963)
A.B., Wheaton College; Th.B., Westminster Theological Seminary; University of Pennsylvania; Harvard University.
- TRAPP, LYLE F.....*Auto Body* (1953)
University of Nebraska; Colorado A. & M.; Fisher Body Training Program, General Motors Corporation; Idaho State College; Boise Junior College; Oregon State University; Ferris Institute, Big Rapids, Michigan; Food Machinery & Chemical Corporation, Lansing, Michigan.
- TRIPP, HARRY A.....*Drafting and Design* (1965)
Williamsport Technical Institute; Specialized Training and Experience in Field.
- UNDERKOFER, G. W.....*Business* (1952)
B.A., Nebraska Wesleyan University; University of Chicago; University of California, Los Angeles; University of Southern California; San Jose State College; Brigham Young University.
- VALVERDE, LUIS J.....*Humanities* (1965)
Universidad Central, Quito, Ecuador; B.A., Mankato State College, Minnesota; B.S., Southern Illinois University; M.A., University of Illinois; Ed. D., University of California at Los Angeles
- VAN LIEW, WAYNE.....*Drafting-Design* (1961)
Northeastern State College; B.S., M.S., Oklahoma State University; University of Tulsa; Idaho State College; University of Illinois; University of Arkansas.
- WALN, CLAUDE.....*Chairman, Division of Vocational Ed.* (1950)
B.E., Colorado State University; Idaho State College.
- WALTERS, J. ROGER.....*Mathematics* (1965)
Los Angeles City College; University of California at Berkeley; B.A., University of California at Los Angeles; M.A., University of Oregon.
- WARWICK, JOHN E.....*English, Speech* (1963)
Loyola University; DePaul University; B.S., Quincy College, Illinois; Michigan State University; M.F.A., Catholic University of America.
- WELLS, MERLE W.....*History* (1965)
Boise Junior College; A.B., College of Idaho; M.A., Ph.D., University of California, Berkeley.
- WESTFALL, HELEN.....*Physical Education* (1962)
B.A., Simpson College; M.A., State University of Iowa; University of Oklahoma; University of California at Los Angeles; Drury College; University of Illinois.
- WESTON, E. ALLEN.....*Drafting & Design* (1964)
B.F.A., University of Arizona; Jefferson Machamer School of Art; Art Center School; USA Engineering Drafting School.
- WHITE, WAYNE E.....*Economics, Business* (1965)
A.A., Eastern Arizona Junior College; B.S., M.A., Arizona State University; University of Arizona.

- WILBANKS, THOMAS *English* (1964)
A.B., Trinity University; Th.B., Princeton Theological Seminary; Th.M., Louisville Presbyterian Theological Seminary; University of New Mexico.
- WILKINSON, EDWIN E. *Dean of Men, Psychology* (1958)
University of Akron; University of Oregon; B.A., Whitworth College; M.S., Washington State University.
- WILLIAMSON, CHARLES F. *Vocational Counselor* (1965)
B.S., M.S.Ed., University of Idaho; Colorado State University; Washington State University.
- WINANS, ELLA MAE *Mathematics* (1958)
Idaho State College; B.S., University of Oregon; M.S., New York University.
- WOLFE, JAMES R. *Asst. Dean of Faculty* (1960)
B.S., M.B.A., Indiana University; University of California at Berkeley; Idaho State College; Stanford University.
- WOODWORTH, JOHN G. *Speech, Radio, Television* (1958)
B.A., University of Oklahoma; M.A., University of Michigan; University of Iowa; Northwestern University; Iowa State College; Southern Oregon College; Oregon Shakespearean Festival.
- WU, HUNG-SEN *English* (1962)
A.B., Syracuse University; M.A.(Govt.), Harvard University; M.A. (English), Columbia University.
- WYLLIE, GILBERT A. *Life Sciences* (1965)
B.S., College of Idaho; M.A., Sacramento State College; Oregon State University; University of Oregon; Ph.D., Purdue University.
- YOUNG, JERRY *Mathematics* (1964)
A.A., Centralia Junior College; B.A. (Math), B.A. (Ed.), Central Washington State College; M.A., Washington State University.

ELEMENTARY EDUCATION

SUPERVISING TEACHERS, CAMPUS SCHOOL

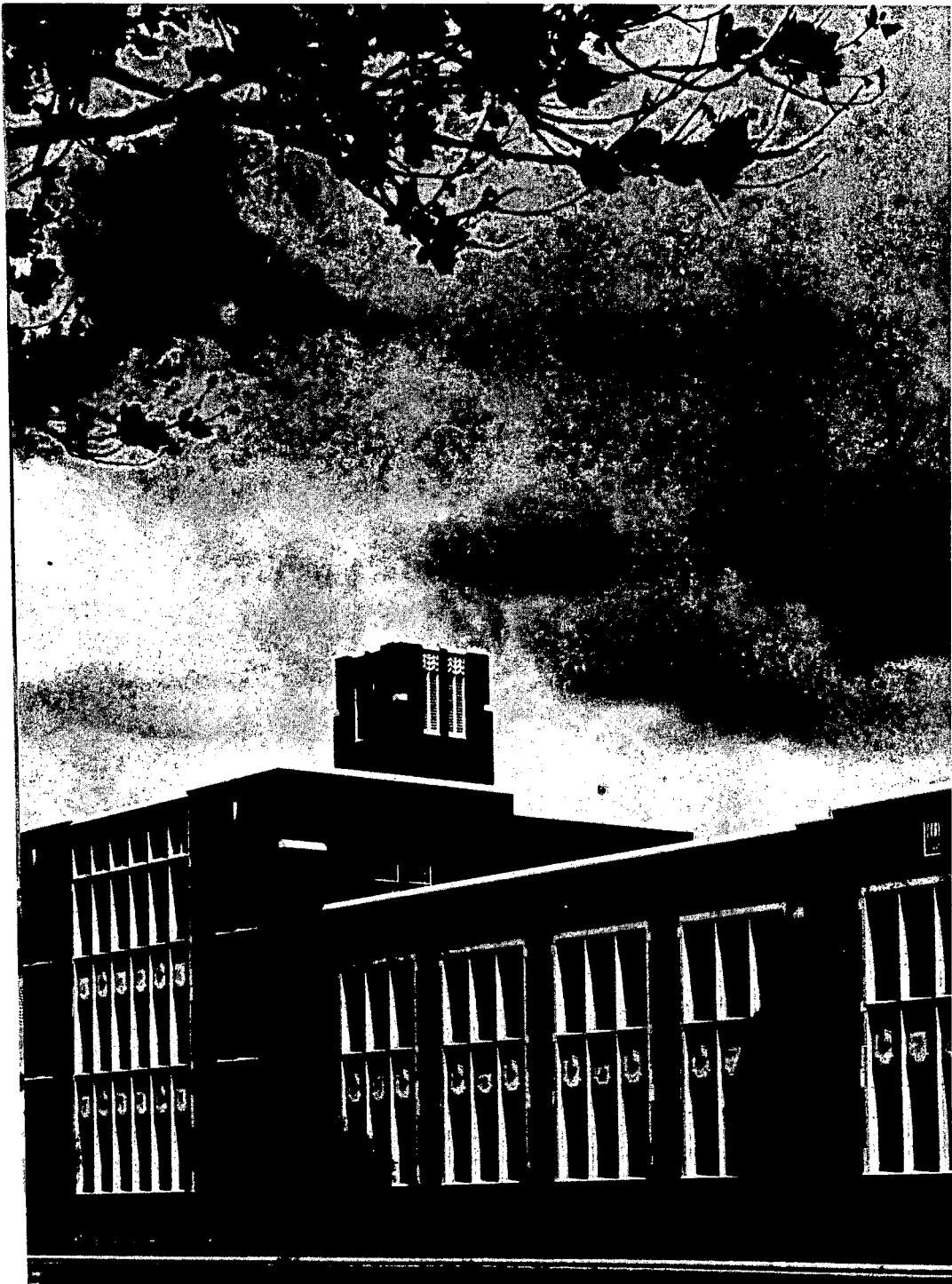
KEENER, KEITH	Principal
DAKOPOLOS, BARBARA	Nurse
FRIESEN, DAVID	Grade 6
FRITSCHLE, MARIEL	Grade 1
GOIN, ALICE	Grade 4
HAWKS, CARLOTA	Grade 2
HILLMAN, REVA	Grade 3
PHELPS, DORA	Grade 5
ROBERTS, DOROTHY	Grade 4
SEELEY, DOROTHA	Grade 3
TOOMAN, MARGUERITE	Grade 1
WARR, HARRY G.	Grade 6
WORDEN, MARIANNE	Grade 2



Students enjoy modern and spacious buildings.

PART I

General Information



Nerve center of the campus is the Administration Building.

BOISE COLLEGE

and

BOISE JUNIOR COLLEGE

HISTORY

Boise Junior College is the product of citizens in action, and holds a reputation as a "community college" meeting the educational needs of the area. From the inception of the school, during the Depression 30s, to February 1965 when it acquired four-year status and a new name—"Boise College"—the citizens have continuously supported plans for higher education.

When college seemed beyond the reach of many young people, in the spring of 1932, an Episcopal Bishop, the Right Reverend Middleton S. Barnwell, Organized Boise Junior College. Its classes were held in St. Margaret's hall, a church-operated girls' academy. Five of the original faculty members are still with the school.

Two years later, in answer to an appeal from the Bishop, a group of visionary citizens formed a non-profit corporation to continue the operation of the fledgling school. The city of Boise, in turn, contributed land on which to build a campus, on a 110-acre tract south of the Boise River, the former municipal airport.

The Idaho Legislature helped lay the groundwork to make the college a public institution by passing an enabling act in February, 1939, permitting the formation of junior college districts. Within a month, the Boise Junior College District was formed by a large majority of the qualified voters, and the school opened that fall as a public institution. Another district vote, by a 10 to 1 majority, approved the necessary funds to start building a college plant.

Repeatedly, the college district electorate has provided the facilities and faculty for the ever growing needs of the college, as the daytime and night school enrollments increase. For 1965-66, the total enrollment in all sessions, including summer school, was more than 6,000, (as compared to the original enrollment of 105 students in 1932).

The 1965 State Legislature voted four-year status for the Boise educational institution which has acquired the ultimate as a fully accredited junior college over a period of 33 years.

The first upper division courses were offered during the summer session of 1965. Many of those who graduated from the junior college in the spring of 1965 will comprise the first junior class at Boise College. The first graduation from the new four-year college will be in the spring of 1967.

The latest legislative action, also enacted by the 1965 Legislature, which vitally affects the future of the College is House Bill 313. This went into effect July 1, 1965 creating a system of junior college areas. Boise Junior College is in Area 3 which encompasses the ten southwest counties.

Now the campus emerges with two colleges to fulfill the educational needs of men and women of all ages: Boise Junior College which will continue to offer two-year courses of study, including an Area Vocational-Technical School; and Boise College which offers four-year curricula towards baccalaureate degrees.

PHILOSOPHY OF THE COLLEGE

The pursuit of knowledge today must go far beyond the mere acquisition of facts. The College seeks through its courses and in conjunction with its

guidance program to provide students with the intellectual tools necessary to develop their talents to the fullest potential and to become useful members of society. It also attempts to give students a general knowledge of the heritage and civilization of the modern world, and of America in particular; an appreciation of the interdependence of the various fields of human knowledge; and an intensive knowledge of some special field and/or skill.

The College attempts to provide for its students an environment which will promote desirable social adjustments, habits of personal and social responsibility, and an adequate sense of values. Students are encouraged to develop qualities of leadership and good citizenship by participating in student affairs, cultural offerings and religious activities sponsored by the interfaith council. A close relationship between administration, faculty and students is characteristic of the College. The faculty members, with their diverse personalities and broad, varied backgrounds of academic, professional and practical experience, form the nucleus for enriching student life on campus.

THE PLAN

Courses of study are planned to meet the needs of high school graduates who desire additional training or education for the following reasons:

1. To obtain a baccalaureate degree by enrolling in a full four-year course; or to obtain pre-professional background.
2. To obtain a general or specialized junior college education beyond high school.
3. To qualify for business or professional positions through additional education and training.
4. To obtain new skills or retraining in present work, in evening classes.
5. To earn upper division credits in evening classes, toward a four-year degree.

THE PLANT

The tree-studded campus south of the Boise River, opposite Julia Davis Park, is bounded on the west by Capitol Boulevard and on the east by Broadway Avenue. It is traversed on the north by a picturesque river road at the end of which stands a small historic chapel which was moved on campus for posterity. College Boulevard is the southern boundary line of the campus.

The college is within walking distance of the downtown area, below the hill from the Union Station. Opposite the campus on the south are several religious centers of various denominations.

The Administration Building was completed in time to accommodate the 1940 classes, and was followed that same year by the Heating Plant, Music Auditorium, Vocational Shop, Gymnasium and Student Union Building.

The Music Auditorium houses the \$40,000 Cunningham Memorial Organ, considered one of the finest of its kind in the Northwest. The building was modeled in 1953 and seats 600 persons for college and community functions. The Music Department also is quartered here, including practice rooms and studios.

Student Union Building which was partially constructed through student fees and further financed by the Board of Trustees and a gift by H. W. Morrison is the social center of the campus. It has two large dining rooms, kitchen and snack bar, ballroom, lounges and recreation rooms. Here most of the clubs and organizations hold their meetings.

Bronco Stadium, completed in 1950, has a permanent seating capacity of 10,800 which frequently is augmented by temporary bleachers. Friends of the college promoted the stadium which not only serves as "Home of the Broncos" football team but for track events, outdoor pageants and spectacles, and for athletic events of high schools and other colleges.

Morrison Hall (women's dormitory) and **Driscoll Hall** (men's dormitory) were both completed in 1951 with identical construction of 48 single rooms and 15 double rooms. Central features are downstairs parlor and large recreation rooms. Each dormitory has 10 suites with small living room and lavatory facilities for the occupants. Laundry facilities also are available for the residents.

Science Building was completed in 1955 at a cost of approximately \$500,000. Occupying the first floor are the Life Science Division, the Physics Department and the Home Economics Department which contains model kitchens and living facilities. A theater-type lecture room seating 260, also on the first floor, is in continuous use. The Physical Science Division classrooms and laboratories occupy the second floor. A **NEW WING** costing about \$335,000 is scheduled to be ready for fall semester 1966 classes. It will house engineering drawing and other laboratories, 9 classrooms and seminar rooms.

Gymnasium and Physical Education building also constructed in 1955 is used extensively by the college and the community for events requiring a large seating capacity (up to 4,000). The gymnasium contains two full sized basketball floors and additional large areas adaptable for special training classes, testing and registration.

Vocational Buildings are located on the southeastern section of the campus on Bellevue Avenue. Included are shops for auto mechanics, machine shop, welding, carpentry and auto body.

Technical Education Building, constructed in the fall of 1963 to accommodate the rapidly expanding vocational program, houses the Drafting-Design, and Electronics, and other classes. A **TWO-STORY ADDITION** is scheduled to be ready for fall semester 1966 classes. It will house additional classes, laboratories and offices.

Campus School is an elementary school built by the Boise Independent School District on the college campus. This unique arrangement provides student teaching for education majors, under the guidance of the college and Campus School instructors.

The Library is the newest building on the campus, used for the first time in the summer of 1964. A 1962 bond election provided the funds for the modern, glass-fronted structure overlooking the campus road on the north, with a south terrace where students congregate. The first floor houses the library facilities which can accommodate about 300 persons at reading or study tables and in three lounge areas. The book collection totals over 42,000 volumes, in addition to 4,300 bound periodicals and 2,500 reference volumes. Approximately 400 magazines and 15 newspapers are received, and microfilm readers are available for periodicals on microfilm. Listening and typing rooms are easily accessible, and approximately 1000 phonorecords and 250 tapes also are available.

At present, the English, Art and Speech Departments and the Instructional Materials Center are located on the second floor of the Library. Eventually, the total two-story structure, with the exception of space occupied by the Instructional Materials Center, will be utilized entirely by the Library when the **NEW LIBERAL ARTS BUILDING** is constructed.

The Instructional Materials Center (Educational Film Library) is owned cooperatively by the college and school districts in Southern Idaho and Eastern Oregon. The library now includes more than 1100 films and 550 film strips valued at more than \$100,000, which are used extensively not only in the College but in schools and by community organizations throughout the area. The latest projectors and other audio-visual equipment also are included in the Center.

A **Building Expansion Program** costing 3½ million dollars, from a 1 mill levy and matching Federal funds, was approved in April, 1965, by district voters. To be constructed is the new Liberal Arts Building, Science Building addition, a new Student Center, new men's dormitory accommodating 300, and an addition to the Technical Education Building.

CULTURAL ADVANTAGES

The College increasingly is becoming the hub of cultural activities for the area, with many events presented at no charge, or for a nominal attendance fee. The College Lyceum Committee sponsors a series of lectures and entertainment featuring outstanding public figures or artists on tour to which the public is invited.

Dramatic offerings by student actors are presented each season, including plays in French, Spanish and German given by language students.

A full calendar of musical offerings includes recitals, concerts of the a cappella choir and the college band (both of which go on tour each year), the BJC-Community Symphony orchestra, and an annual Opera Workshop production.

As the state capital, Boise offers many additional advantages to the students who can observe first hand various governmental departments, where they frequently have an opportunity to work. The city is the hub of communications, with the largest daily newspaper in the state, two major television stations, two weekly newspapers and seven radio stations.

There are two modern hospitals, plus a renowned convalescent center. It is a city of churches, and civic organizations abound for both men and women.

Music opportunities for participants and audiences alike are here with a Philharmonic Symphony orchestra, the Community Concert series, in addition to several major musical show productions involving local talent given each year. There is an active Little Theatre group, an Art Association which sponsors an Art Gallery in Julia Davis Park, and a Historical Society in conjunction with the State Historical Museum also located in the Park, across the river from the college campus.

Boise Valley has a mild climate, only a few miles' drive to the mountains for abundant snow. Bogus Basin, the local ski area, is only 16 miles from the city. Family camping is a favorite recreation, with hunting and fishing practically at one's backdoor. Water sports are found at nearby Lucky Peak reservoir, Lake Lowell and many other recreation spots within a short drive of town.

STUDENT HOUSING

All new out-of-county students are required to live in the residence halls unless special written permission is granted by the Dean of Men or Dean of Women. Early application is encouraged since housing is limited at the present time. Such permission will be given women students only to live with a close relative. Students over twenty-one or married are not included in this regulation.

ALL students are required to report any change of residence (temporary or permanent) to the Dean of Men's office immediately.

Standards of Conduct are made explicit to all students through the Student Handbook. Any student who violates these standards may be removed from his place or residence and may be dismissed from the College.

ON-CAMPUS HOUSING: RESIDENCE HALLS

The two permanent residence halls—one for men and one for women—are virtually identical in every respect. Each building has 48 single and 15 double accommodations. They are located at the heart of the campus near the new library, classrooms, auditorium, athletic fields, and Student Union (dining hall).

A first floor lounge and basement recreation room are the central features of each building with ten suites accommodating from six to eight occupants. Basement laundry facilities are accessible to all residents. Bedding, towels, and study lamps are NOT furnished by the College. All residents are required to take their meals at the Student Union dining hall. Opening and closing dates are listed in the inside front cover of this catalog.

Three temporary housing units—one for men and two for women—are also available. West Hall will accommodate up to twenty men students while the Falk House and Chapman House up to fifty women residents.

BOARD AND ROOM COST: By the Semester are:

MORRISON & DRISCOLL HALLS:

	Board	Room	Total
Single	\$226.60*	\$119.40	\$346.00
Double	226.60*	96.40	323.00
WEST HALL	226.60*	78.40	305.00
FALK PLACE	226.60*	91.40	318.00
CHAPMAN HOUSE	226.60*	101.40	328.00

*Includes 3% Idaho Sales Tax

(CHARGES ARE SUBJECT TO CHANGE WITHOUT NOTICE)

MEAL SERVICE CALENDAR for the year 1966-1967:

Fall Semester—August 21, 1966 through December 21, 1966

(Except Thanksgiving vacation November 24 through November 27)

Between Semesters—December 22, 1966 through January 7, 1967

(Meal service will be suspended. The Snack Bar will be closed.)

Second Semester—January 8, 1967 through May 14, 1967

(Except for Spring Vacation March 24 through March 27.)

Application Procedure:

All applications for the residence halls should be directed to the Residence Hall Secretary, Boise College. Returning students generally have priority; otherwise, applications will be processed as soon as the following requirements have been met:

- (1) An Application-Contract, Residence Hall Information Card, and Security Deposit are filed with the Residence Hall Secretary.
- (2) The \$25.00 Security Deposit must be filed at the same time as the Application Contract and Residence Hall Information Card. All checks or money orders should be made payable to Boise College.
- (3) The applicant is accepted as a full time student by the Director of Admissions.

Since there may be a delay in obtaining acceptance into the College, the applicant should note that steps one and two may be completed before step three. If notification for a cancellation of a room reservation is not received by this office on or before August 1, the Security Deposit is forfeited and no longer refundable. The Security Deposit will normally be held until the end of the academic year for registered students awaiting assignment or assigned who move out during the year. The \$25.00 Security Deposit is not to be construed as partial payment for the cost of room and board.

Since there are limited accommodations at present, selection of assigned residents is based on a stringent review of the cumulative records of each applicant.

OFF-CAMPUS STUDENT HOUSING

All unmarried students under 21 years of age must obtain the approval of the Dean of Men or the Dean of Women to live off campus. Lists of available housing are on file in these offices. Housing agreements must be initiated and filed with the Dean of Men's office.

Students over 21 years and/or married need not obtain approval but are welcome to use the Dean's Housing lists.

All students are required to report any change of address, both temporary and permanent.

COLLEGE COURTS (MARRIED STUDENT HOUSING)

Eighty housing units are available for married students. They are located one block off campus and rents are low. Rates for apartments are \$50.00 to \$55.00 for one bedroom, \$60.00 for two bedroom, and \$65.00 for three bedroom. (Charges subject to change without notice.) Electric refrigerators and ranges are installed in each apartment. Coin-operated washing machines and dryers are located on the site. Heat, water, hot water, and garbage disposal are furnished. Other facilities are not furnished.

Applications for these units should be made directly to Married Student Housing Manager, Boise College. A \$50.00 security deposit is required. If notification for a cancellation of a reservation is not received by August 1, the security deposit is forfeited and no longer refundable.

HEALTH SERVICE

Boise College provides a health service for students in attendance. Each student will be required to take a complete physical examination before entering Boise College for the first time. This physical examination report must be furnished on medical form mailed to prospective students by the college.

The medical advice of the college physician, Dr. Bruce Budge, is available one hour daily at the Health Center, without charge, to all students. Also between hours of 9:00 and 12 noon a nurse will be on duty. The student may receive, as well as medical advice, treatment for any minor ailment or injury requiring bandaging and medication. In addition, all full time students automatically are participants in a health and accident insurance program providing coverage from the beginning to the end of each semester. The health and accident program provides for liberal hospitalization as well as medication, laboratory service, and the major portion of medical and surgical fees.

The treatment of pre-existing illnesses is not included under either of the programs. Responsibility for providing any special care required by a physically handicapped student rests with that student or with his parent or guardian.

GUIDANCE PROGRAMS

The guidance program at Boise College is designed to reach every student. Regardless of the nature of his problems the student at Boise College is afforded the opportunity to discuss them with a faculty advisor of his choice, or with a professional counsellor.

The student in need of vocational guidance finds at his disposal the services of a specialist at no extra cost. In addition to knowledge gained from the entrance tests, taken before his registration, information is available through tests that range from inventories of his interests to measure of his various aptitudes and abilities.

Each full-time student is required to take the standard American College Testing program test battery before entering Boise Junior College as a first-time freshman. Students who take these tests during their senior year in high school will not be retested at the College.

All tests are used for guidance and placement rather than for selective admission.

PETITIONS

Individuals or groups of students always have the privilege of petition. Academic petitions should be addressed to the Dean of Faculty. Other petitions should be directed to the appropriate administrative officer.

ACCREDITATION

The College will continue its junior college division emphasizing a strong program in the academic, pre-professional, semi-professional, and vocational-technical programs of study. Boise Junior College is a member of the Northwest Association of Secondary and Higher Schools, and has been fully accredited by that organization since 1941. This accreditation continues as in the past with a re-evaluation scheduled for October 1966 by a visitation committee of the Northwest Association of Secondary and Higher Schools. This is part of the regular, periodic accreditation of all northwest colleges and universities which are members of the association.

Five to ten years is the maximum period of accreditation for any college or university in the Association. Boise Junior College received this maximum accreditation in 1956, and now the College will be re-evaluated on the basis of a junior college and a four-year degree-granting college.

HONORS

The Idaho Society of Professional Engineers selects a pre-engineering major to receive the honor being the outstanding engineering student graduating from Boise Junior College. The engineering faculty nominates candidates for this honor. An individual plaque is given to the recipient, and his name is also inscribed on a plaque in the Science Building. The name of the student receiving this honor is announced at Commencement each year.

SCHOLARSHIPS

Pioneer Chapter, Daughters of the American Revolution, gives a scholarship of \$75 each year to help an Idaho girl with a good scholastic record to carry out her plans for a higher education. Apply to the Committee on Scholarship Awards.

The Boise Altrusa Club Education Scholarship of \$400 (\$100 each semester for two years) is awarded to a woman graduate from a Boise high school who will study for two years at Boise College in preparation for the teaching profession. Application may be made through the girls' counselors at the high schools.

The Beta Sigma Phi City Council contributes to the scholarship fund annually. Apply to the Committee on Scholarship Awards.

The Boise Art Association awards yearly a scholarship of \$100 to a graduate from a Boise high school who has outstanding talent in art. Application should be made to the Boise Art Association.

The Boise Chapter, Idaho Writers' League, awards yearly a scholarship in the amount of \$30. Selection is based on interest in the field of writing. Make application to the Committee on Scholarship Awards.

The Panhellenic organization gives scholarships each year to senior girls from Boise high schools with high scholastic averages. Apply to high school principals.

The Boise Chapter, National Secretaries Association (International), awards yearly a \$250.00 scholarship to a graduating woman student from a Boise high school who plans to further her education in the field of secretarial

science. Selection of a recipient is made on alternate years by the three high schools. Application should be made to the Girls' Counselors.

The Boise Association of Insurance Agents has made funds available for two \$100 scholarships each semester to students residing in the Boise Junior College District who are enrolled as full-time students in the field of business. The scholarships are awarded on the basis of financial need and scholastic ability, and the recipients are chosen by a faculty committee from the Division of Business and Economics and two members of the Boise Association of Insurance Agents. Application should be made to the Chairman of the Division of Business and Economics at Boise College at least one month prior to the close of each semester.

The Capitol Chapter of the Idaho State Employees Association awards two scholarships annually to children of Idaho State employees. These scholarships are available to either freshman or sophomore students living in the Capitol Chapter area, as follows: Counties of Ada, Adams, Boise, Elmore, Gem, Valley, and that part of Owyhee County south of the town of Murphy. Application should be made to the Committee on Scholarship Awards.

The Idaho Department of American Legion awards annually a \$100 scholarship to a high school senior who is the winner of their State oratorical contest. The scholarship may be used to attend Boise College, or elsewhere in the State.

The Meridian Lions Club offers an annual \$50.00 scholarship to an outstanding graduating senior who will be enrolling in an institution of higher learning in the State of Idaho. Application should be made to the Meridian High School Principal.

The "40 & 8" Voiture Local 311 grants a \$25.00 scholarship each year to an outstanding student of French attending Boise College. Selection of the recipient of this award is made by the French instructors at the College. Financial need is a consideration.

The B'nai B'rith Award is given annually in honor of Noah S. Levine, a former student of Boise Junior College who gave his life in the service of his country. This award will be presented to a full-time student who, in the opinion of the faculty, is most deserving and who has participated most actively in the fields of public speaking, debate, dramatics, and radio broadcasting activities. This award is presented by the Nathan Falk Lodge No. 48 B'nai B'rith, Boise, Idaho.

The Boise Bench Lions Club gives a scholarship to an entering freshman of an institution of higher learning in the State of Idaho. Selection is based on scholastic achievement and financial need. Apply to the Chairman of the Education Committee of the Boise Lions Club.

The Boise Lions Club awards four \$100 scholarships to graduating seniors from high schools in the Boise area on the basis of service, citizenship, scholarship, and need. Apply to Committee on Scholarship Awards.

The Soroptimist Club of Boise grants several scholarships to women high school graduates in the Boise area. These scholarships may be used at Boise College. Make application to the Chairman of the Scholarship Committee, Soroptimist Club of Boise.

The Welcome Wagon Newcomers Club of Boise awards \$125.00 per semester for the school year to a worthy second year female student who is a Boise Junior College District resident living at home and planning to continue her education beyond the first two years. Application should be made to the Committee on Scholarship Awards.

Boise Lodge No. 337 of the Loyal Order of Moose awards a \$50 scholarship annually to a graduating senior residing in the Boise School District. The recipient of this scholarship is chosen by the officials of the Boise School District.

Mr. Harry W. Morrison offers a limited number of scholarships to deserving students attending Boise College. Apply to the President of the College.

Several tuition scholarships are made possible each year by Mrs. Eva Adams, continuing the plan initiated by her husband, the late Charles F. Adams. Make application to the Committee on Scholarship Awards.

Five Margaret Cobb Ailshie scholarships of \$400 each are awarded students of Boise College who are residents of Southwestern Idaho. They are awarded on the basis of financial need, worthiness and scholastic standing. Apply to the Committee on Scholarship Awards.

The Lloyd Charles Stenger Scholarship of \$50 each semester is awarded to a Boise College student. Scholastic record, worthiness and need are considerations for this scholarship. Make Application to the Committee on Scholarship Awards.

The Oscar W. Worthwine Memorial Scholarship was established by friends of Mr. Worthwine, former member of the Board of Trustees of Boise Junior College. Application for this scholarship should be made to the Committee on Scholarship Awards.

The Earl B. Mathews Scholarship for several students is made possible by an annual gift from Mr. Mathews, a former student of Boise Junior College, and a matching amount from the General Electric Foundation. Application for these scholarships should be made to the Committee on Scholarship Awards.

The Rose Richer Adkison Memorial Scholarship Fund has been established by Colonel Norman B. Adkison in memory of his wife, Rose. These scholarships are awarded annually to Idaho residents attending Boise College who are outstanding art students. The Head of the Art Department selects the recipients for these awards.

The Women's Auxiliary of the Southwestern Idaho Dental Association awards a \$150 scholarship to a young lady enrolled in the Dental Assistant Program at Boise College on the basis of scholastic record and need. The Dental Assisting instructor makes recommendations for the scholarship and the recipient is chosen by the instructor with the assistance of the Chairman of the Vocational-Technical Division and the Director of the Dental Assistant Program.

The Ada County Medical Auxiliary awards a scholarship at the end of each school year to a young lady who will continue studying at Boise College during her sophomore year in the field of nursing. Make application to the Director of Nursing at Boise College.

The Idaho Candy Company Scholarships are awarded to several worthy students from Idaho who are attending Boise College. Application should be made to the Committee on Scholarship Awards.

The Sears-Roebuck Foundation of Seattle offers six scholarships of \$125 each to graduates of Meridian High School, Mountain Home High School, and Bishop Kelly High School of Boise. These scholarships may be used at Boise College or elsewhere. Apply to high school principal.

The First Security Foundation offers three scholarships of \$200 each to students of business and finance. These are awarded at the end of the freshman year for use in attending Boise College during the sophomore year. The head of the Business Department of Boise College selects outstanding students for these scholarships.

Hummel, Hummel, Jones and Shawver awards annually to a freshman art student, who continues study at Boise College as a sophomore, a scholarship in the amount of \$50. The recipient is selected by the head of the Art Department of Boise College.

The Methodist Service Award of \$50 is given annually by the Wesley Fellowship of the First Methodist Church, Boise, to a student who has completed one year at Boise College or a Boise high school graduating senior planning to attend Boise College. Apply to the Minister of the First Methodist Church.

The C. C. and Henrietta W. Anderson Foundation, a charitable, religious, and educational foundation created some years ago by Mr. and Mrs. Anderson, authorizes a grant to Boise College each year from the earnings of the trust to be used for scholarships. This year six \$400 scholarships will be offered to bona fide residents of the Boise Junior College District. Students will be considered for these scholarships on the basis of scholastic record, need, and worthiness. Application should be made to the Committee on Scholarship Awards.

Funds have been bequeathed to Boise College by W. George and Laura B. Campbell and are available for scholarships to outstanding, worthy students attending Boise College. Application should be made to the President of Boise College.

The Clyde F. Potter Memorial Scholarship Fund was established at Boise Junior College in 1963 by the many friends and relatives of Mr. Potter in remembrance of his many years of devoted service to Boise Junior College and its students. Mr. Potter served first in the capacity of Secretary-Treasurer of the Boise Junior College District, and later as Business Manager. One Boise Junior College District tuition scholarship will be awarded annually to an outstanding, worthy student attending Boise College. Applications should be made to the Committee on Scholarship Awards.

The Dollars for Scholars Committee has awarded a number of scholarships of \$200 each from the Nampa Community Scholarship Fund to students from that area who are continuing their higher education. The recipients may use the scholarships at Boise College.

Junior Achievement of Boise, Inc., annually gives three scholarships of \$100 each to area high school students who are members of the Junior Achievement Program; these students are also eligible to compete for scholarships given by the national organization. The scholarships given by the Boise organization are awarded from funds made available through donations from various business firms in the city of Boise and are awarded in recognition of outstanding achievement in the Junior Achievement Program after competitive examinations are given. This organization was founded for the explicit purpose of acquainting area young people with the American system of free enterprise. Application should be made to the Chairman of the Scholarship Committee of the Junior Achievement of Boise, Inc.

The J. Weil & Company of Boise grants a \$25 scholarship annually to a student in the Division of Business and Economics at Boise College. Application should be made to the Committee on Scholarship Awards.

Boise P.T.A. Council makes available annually several scholarships to Boise High School, Borah High School, Capital High School, and Bishop Kelly High School graduates who are continuing their education at Boise College. These awards are given to students who plan to enter the teaching profession. Apply to the high school counselors.

The P.T.A. of Bishop Kelly High School awards one or two scholarships each year to graduating seniors of Bishop Kelly. Recipients of these awards are students outstanding in citizenship and scholarship. Application should be made to the high school principal.

A number of scholarships are given by Mr. John A. Schoonover. These are awarded to students who are proficient in trombone, baritone, or bass instruments, and interested in becoming members of the Boise College Band.

Scholarships will be largely determined by auditions conducted by the Director of the Band.

Holsinger Music, Inc., offers a \$100 scholarship to a worthy student in the Music Department of Boise College. Selection of such a student will be made by the head of the Music Department by competitive audition, and applications should be submitted to the head of the department.

A pipe organ scholarship of \$250 is awarded annually. This scholarship is provided alternately each year by the Idaho Power Company and the Idaho Daily Statesman, through arrangements by the Choristers. Applications should be made to the head of the Music Department at the College. The recipient shall be a fully accredited student at Boise College.

The Boise Tuesday Musicale awards an annual scholarship to a student majoring in applied music. Following auditions conducted and judged by the Boise Tuesday Musicale in May, the scholarship is presented to the most deserving student. An applicant must have been a member of the Boise Junior Tuesday Musicale, enroll in the Music Department of Boise College for the fall semester, and make application to the President of the Boise Tuesday Musicale prior to April 20.

The Associated Women Students of Boise College award a \$50 scholarship each year to a girl from a high school within Ada County who will be living in Morrison Hall. The recipient is chosen by the Director of Morrison Hall, the Dean of Women, and the President of the College.

One or more scholarships are given each year by Boise College students living in Driscoll Hall. Selection is made by the men living in Driscoll Hall, with the assistance of the Dean of Men. Application should be made to the Committee on Scholarship Awards.

The Golden Z Club of Boise College gives one or two Maymie Pierce Scholarships to freshman members who will continue their study at the College, based on grade point average and leadership. Selection will be made by a committee of Golden Z members, their Advisor, and the Dean of Women.

The Intercollegiate Knights, men's service organization, makes available a number of tuition scholarships each year to worthy students attending Boise College. Apply to the Committee on Scholarship Awards.

One or more scholarships are given each year by Boise College students living in Morrison Hall. Selection will be made by the women living in Morrison Hall, with the assistance of the Dean of Women. Application should be made to the Committee on Scholarship Awards.

Pi Sigma Sigma, men's service organization on the campus, makes an award of a tuition scholarship to a freshman male student entering Boise College. Make application to the Committee on Scholarship Awards.

The Student National Education Association of Boise College gives an annual \$50 scholarship to an outstanding freshman or sophomore education major. Application should be made to the Committee on Scholarship Awards.

Several scholarships are awarded each year to students enrolled in vocational courses by Tau Alpha Pi, a vocational service fraternity of the College. Awards are made by the Vocational-Technical Division Scholarship Awards Committee.

Scholarships are given by the Valkyries, women's service organization of Boise College, to women of the College who have a high scholastic standing and who are in need of financial aid in order to continue their higher education. Apply to the Committee on Scholarship Awards.

The Boys Federation of Meridian High School gives an annual scholarship of \$150.00 to a male graduating senior. The recipient may use this scholarship

at Boise College or elsewhere in the State, and may pursue the curriculum of his choice. Application may be made to the Meridian High School Principal.

The Girls Service Club of Meridian High School grants several \$100.00 scholarships each year to worthy senior girls. This scholarship is to be used at an institution of higher learning within the State of Idaho. Apply to the Meridian High School Principal.

The Future Teachers Association of Meridian High School awards a \$100.00 scholarship each year to a graduating senior. The recipient of this scholarship must be an education major and attend an institution of higher learning within the State of Idaho. Apply to the Meridian High School Principal.

The Borah Future Teachers Association grants an annual scholarship to a graduating senior from Borah High School who plans to enter the teaching profession. This scholarship may be used at Boise College or elsewhere in the State of Idaho. Application may be made to the Advisor of the Future Teachers Association, Borah High School.

The Spanish Club of Borah High School in Boise offers two \$50 scholarships to students entering an institution of higher learning. The recipients must be members of the Spanish Club at Borah High School and are chosen for outstanding achievement in the Club. The recipients of the scholarships may attend Boise College.

The Junior Class of Borah High School in Boise awards several scholarships to graduating seniors for outstanding school service. The recipients may use the scholarships at Boise College.

Boise College offers a \$250 scholarship to the young lady chosen as "Miss B.C." The recipient of this scholarship must be a single girl who will use the scholarship at Boise College and must be enrolled as a full-time student. The "Miss B.C." Pageant is jointly sponsored by two service clubs of the college, the Golden Z's and the Intercollegiate Knights.

The Idaho Air National Guard grants a \$50 scholarship each semester to an active member of the 124th Fighter Group (AD). The recipient must be enrolled at Boise College as a full-time academic student, and his expiration term of service must not occur during the period of time for which the scholarship has been awarded. The Dean of Men, Coordinator for the Air National Guard, first determines eligibility; formal application should then be made with the Committee on Scholarship Awards.

Boise College awards six one-year tuition scholarships each year to outstanding boys attending the American Legion Gem Boys State. The recipients are chosen on leadership, character, self-reliance, courage, and initiative. These scholarships are awarded by the Chairman of the Committee on Scholarship Awards of Boise College, a Justice of the Idaho Supreme Court, and a National Field Representative of the American Legion.

The Boise Centennial Chapter of the American Business Women's Association offers two \$100 scholarships annually to girls in the field of secretarial science or business. Apply to the Committee on Scholarship Awards.

The Lambda Delta Sigma organization offers annually two \$100 scholarships. The students must register for a minimum of fourteen semester hours and maintain a grade point average of 2.5. Apply to the Director of the L.D.S. Institute of Religion, Boise.

The Canyon County Medical Auxiliary offers a scholarship of \$200 to a Nampa girl who enrolls in the study of nursing. The recipient may attend Boise College.

The Girls Recreation Association of Borah High Schools offers a scholarship to a senior girl from Borah High School. The recipient may attend Boise College.

The Laura Moore Cunningham Scholarship Foundation has made monies

available to outstanding worthy students in the Treasure Valley Area. The awards are made to three members of each class and may be continued after first issuance depending upon scholastic achievement.

W. H. Langroise has established a Memorial Fund in memory of his wife, Vernett S., and his son, William H., Jr. Scholarships will be awarded from the earnings of this fund. Application should be made to the Committee on Scholarship Awards.

Some board scholarships are provided by Saga Food Service each year. Apply to the Scholarship Awards Committee.

The Ada County School Food Service Association offers a \$50 scholarship to a freshman student majoring in Home Economics who will return to Boise College for her sophomore year and plans to complete requirements for a degree in Home Economics. The applicant's family home must be located in Ada County. Selection will be made by representatives of the Food Service Association.

Boise Home Economists in Homemaking present a \$50 award to an outstanding sophomore girl who is majoring in home economics. Selection is based upon scholarship, school service and professional potential.

The Esquire Club, a men's service club, offers a scholarship of \$100 each spring semester to a student who will be returning the following fall. Applications are available in the office of the Dean of Men.

Nordling Parts Co. provides several scholarships for students in Auto Mechanics. Boise College is one of three institutions which the recipients may attend.

The Kenneth N. Salyer Memorial Wrestling Scholarship Fund was established by Mrs. Kenneth Salyer from contributions by his friends and relatives. One \$100 scholarship will be awarded each year. Applicants should be prospective members of the wrestling team. Apply to the Scholarship Awards Committee.

The Boise Business and Professional Women's Club offers a scholarship of \$75, to be given to a junior or senior woman majoring in education or business education. Apply to the Committee on Scholarship Awards.

The Boise College Fund, Inc., is comprised of the various memorial scholarship funds indicated below. Annual earnings from this fund will provide a limited number of scholarships each year. Applications should be made to the Scholarship Awards Committee.

The Robert F. Jones Memorial Scholarship Fund was established by friends and relatives in memory of Dr. Jones, former Head of our Education Department.

The Dr. Virginia M. Ebert Memorial Scholarship Fund was established by friends in memory of Dr. Ebert, former faculty member of the Psychology Department.

The Jacob Ullman Memorial Scholarship Fund was established in his memory by friends and relatives.

The Sid Waterhouse Memorial Scholarship Fund was established by friends in memory of Mr. Waterhouse, employee of the College for many years.

The Mrs. Guy Barton Memorial Scholarship Fund was established in memory of Mrs. Barton, mother of Mrs. Eugene B. Chaffee, by friends.

The Sherman N. Weisgerber Memorial Scholarship Fund was established in his memory by his fellow employees of the State Highway Department and friends.

The Calla Wood Memorial Fund was established by the American Association of University Women.

The College was the recipient of a bequest from Mrs. Virginia O. Baird, wife of Mr. Ed Baird, former trustee of Boise Junior College.

A limited number of tuition scholarships are granted each semester to both freshman and sophomore students, based on scholastic achievement, character, leadership, and demonstrated need. Funds are provided by anonymous donors and scholarships are awarded upon application to the Committee on Scholarship Awards.

LOAN FUNDS

Students needing financial assistance to take care of school expenses may borrow from one of the student loan funds. Application forms are available in the Office of the Vice President and should be filed a week in advance where out-of-town references are given. Part-time students are not eligible to apply. With few exceptions, loans must be repaid by the end of the semester and are generally limited to \$100. A 50c service charge is made for each loan.

Citizens Loan Fund: Four Boise civic organizations have made possible this fund, which was established in 1938 by the Kiwanis Club. Since that time, the fund has increased almost ten-fold with contributions from the Rotary, Exchange, and Lions Clubs as well as the Kiwanis Club.

Ballantyne Loan Fund: Established by the late Mr. Sam Ballantyne of Boise, with additional contributions from his wife, Mrs. Grace A. Ballantyne.

Preston Capell Loan Fund: Established by a gift from Preston Capell of Nampa.

Capital City Kiwanis Loan Fund: Established by The Capital City Kiwanis Club of Boise.

Elmer S. Chaffee Memorial Loan Fund: Established by gifts from Boise Junior College faculty members.

Fern Hart Memorial Loan Fund: Established by a group of students and teachers from the schools of Ada County in memory of Mrs. Hart. The fund is especially for students who plan to make teaching their profession.

Intercollegiate Knights Loan Fund: Established by the Boise College men's service organization.

The Janeal Fitzsimmons Memorial Loan Fund: Established by members of the Student National Education Association of Boise Junior College in memory of one of its members.

Robert T. McEwan Memorial Loan Fund: Established by friends of a Boise Junior College student in his memory.

The Jennie McFarland Fellowship Loan Fund: Established by Purity Rebekah Lodge No. 67.

H. Albert Neal Loan Fund: Established by Mrs. Iona E. Neal of Phoenix, Arizona, in memory of her husband, Mr. Albert H. Neal, to assist students in the Education Department who plan to become teachers.

Otto T. Gottenberg Memorial Loan Fund: Established by Mrs. O. T. Gottenberg in memory of her husband.

Sears-Roebuck Loan Fund: Established by Sears-Roebuck and Company of Boise.

Warner Memorial Loan Fund: Established in memory of Ida Martin Warner by Ada County elementary teachers and Mr. James Warner for Boise College students majoring in Education.

Dale E. Watts Memorial Loan Fund: Established by friends and business associates in memory of a Boise Junior College instructor. Applicants from Vocational Education Division will be given preference.

Lucille T. Forter Loan Fund: Established by Mrs. Lucille T. Forter, a member of the original Boise Junior College faculty, who retired in June, 1961.

Alice J. Pecora Memorial Loan Fund: Established by members of the Boise Junior College staff in memory of Mrs. Pecora.

John E. Voorhees Memorial Loan Fund: Established by Mr. and Mrs. Dale E. Voorhees in memory of his father.

John B. Chatburn Memorial Fund: Established from gifts made by Boise Junior College staff, friends and relatives.

Physicians Memorial Loan Fund: Established by Boise Physicians to honor the memory of fellow physicians, with Dr. A. C. Jones and Dr. Richard Simonton as the first designees. Limited to the use of students of professional and practical nursing.

Myrtle McClary Memorial Loan Fund: Established by friends of the McClary family.

Gilbert M. Mathison Memorial Loan Fund: Established by his family, friends and fellow employees of the State Highway Department.

The P.E.O. Sisterhood offers loans to girls who have completed satisfactorily one semester of college work. The amount is \$500.00 for one year or \$1,000.00 to be used over two years. Applicants may be made by contacting any P.E.O. member.

The Marc R. Nations Memorial Loan Fund: Established by parents and friends in memory of Mr. Nations, a former student and Duke of the Golden Plume Chapter of the Intercollegiate Knights.

National Defense Loans: The Congress of the United States passed in 1958 the National Defense Education Act which provides funds and enables colleges to participate in making loans primarily to students in the fields of Science, Mathematics, Engineering, Foreign Languages, and Education. A loan may be obtained in the amount of \$1,000.00 for each year of full-time enrollment at Boise College. Need and a superior scholastic average are prerequisites. Interest in the amount of 3% begins to accrue nine months after the student ceases to be a full-time student in an institution of higher education. Actual repayment of principal and interest will be due twenty-four months after such date of separation. Students training to become teachers will have one-tenth of loan principal and interest cancelled for each year up to and including five full academic years of teaching work. Information and application blanks may be obtained from the Office of Vice President.

SCHEDULE OF FEES AND CHARGES

All of the fees, tuition, and other charges are due and payable at the time of registration each semester. Board and room charges may be paid in advance for each semester or arrangements may be made to pay in advance on a partial payment basis by consulting the Business Manager.

Veterans who plan to attend on the GI Bill of Rights under P. L. 550 or P. L. 894 must, upon registration, present their certificates of eligibility. Those under P. L. 894 unable to present a certificate of eligibility at the time of registration will be charged tuition and fees. Upon presentation of said certificate, complete refund will be made. Veterans qualifying under P. L. 550 will pay all charges at time of registration.

Ten or more credit hours for students not attending on the GI Bill will be considered a full schedule for purpose of calculating charges:

All fees, tuition and other charges are subject to change without notice.

TUITION—BOISE COLLEGE: (Upper Division 64 credit hours earned and over)

All students (per semester credit hour).....\$18.00 plus fees
If course taken for audit (per semester credit hour).... 10.00 plus fees

Fees:

General Deposit (Refundable).....	5.00
Student Body Fee*.....	13.11
General Course Fee.....	7.50
Registration Fee.....	5.00
Student Union.....	13.00
Health and Medical.....	3.50
Physical Education.....	3.50
Student Health Insurance.....	9.89
Athletic Fee.....	10.00

*Includes 3% Idaho Sales Tax

TOTAL **\$70.50**

TUITION—BOISE JUNIOR COLLEGE:

District Residents:

*Full-time Students (per semester).....\$50.00
Part-time Students (per semester credit hour)..... 5.00

Ada County Residents: (Residing outside of Boise Junior College District)

*Full-time Students (per semester).....246.60
Part-time Students (per semester credit hour)..... 24.66

Non-residents: (Residing outside of Ada County)

*Full-time students (per semester).....315.00
Part-time Students (per semester credit hour)..... 31.50

Audit Fees:

Any person auditing a class or classes will pay the following tuition:

District (per credit hour).....	10.00
Ada County (per credit hour).....	24.00
Non-resident (per credit hour).....	30.00

Vocational Students:

The State Board for Vocational Education cooperates with Boise Junior College District in financing training courses; therefore, full-time vocational students are considered residents providing they reside in Idaho.

*Refer to page 44 for definition of a full-time student.

**ESTIMATED COST
(PER SEMESTER)
BOISE JUNIOR COLLEGE**

	District Residents	Ada County Residents	Outside Ada County In State	Out of State
Tuition	\$50.00	\$246.60	\$315.00	\$315.00
General Deposit (Refundable).....	5.00	5.00	5.00	5.00
Student Body Fee*.....	13.11*	13.11*	13.11*	13.11*
General Course Fee.....	7.50	7.50	7.50	7.50
Registration Fee	5.00	5.00	5.00	5.00
Student Union	13.00	13.00	13.00	13.00
Health and Medical.....	3.50	3.50	3.50	3.50
Physical Education	3.50	3.50	3.50	3.50
Student Health Insurance	9.89	9.89	9.89	9.89
(Rate subject to annual review)				
Athletic Fee	10.00	10.00	10.00	10.00
Sub-total	\$120.50	\$317.10	\$385.50	\$385.50
†If student qualifies for County tuition aid as provided by Chapter 238, Thirty-Eighth Session, Idaho State Legislature, 1965, DEDUCT.....		156.60	225.00	
TOTAL ESTIMATED COST	\$120.50	\$160.50	\$160.50	\$385.50

*Includes 3% Idaho Sales Tax

The above estimates do not include the cost of laundry, bedding, books, or personal items which vary greatly depending on the tastes, demands, or financial means of the individual student. In addition to the above, some courses may require special fees.

General Deposit:

Required of all students who enroll. Against this deposit will be charged such items as laboratory breakage, library fines, damage to or loss of college property, and indebtedness to the college. Students will receive a \$5.00 general deposit ticket during registration. The unused balance is refundable at the cashier's office upon official withdrawal from college or completion of academic work for the year.....\$5.00 (All veterans and vocational rehabilitation students will be required to make this deposit personally as the Veterans Administration and the State cannot be billed in this case).

Student Body Fee:

Sponsoring entertainment, dramatics, publication, glee club, and other activities the Student Executive Board decides to include (per semester) 13.11

Testing Fee:

Students who have not taken the ACT tests on a regular national testing date will take the test during registration week. There will be no charge to those who have already taken the tests..... 8.00

Registration Fee: (per semester)

This fee (non-refundable) applies to all full-time and part-time students regardless of credit load 5.00

Change of Schedule Fee: (Changing or adding classes)..... 1.00

General Course Fee: (per semester)

Part time students will pay this fee at a rate of 75c per credit hour to a maximum of \$7.50 per semester..... 7.50

†Idaho counties which will pay tuition aid: Ada (outside BJC district), Bear Lake, Bingham, Boise, Bonneville, Butte, Canyon, Caribou, Clark, Clearwater, Custer, Elmore, (Partial—Glenns Ferry School District is in Southern Idaho Junior College area), Franklin, Fremont, Gem, Idaho, Jefferson, Latah, Lemhi, Lewis, Madison, Nez Perce, Oneida, Owyhee (Partial—Glenns Ferry School District is in Southern Idaho Junior College area), Payette, Power, Teton, Valley, Washington, and Yellowstone National Park.

Examination:	
At other than scheduled time (quizzes).....	1.00
*Final Semester examination	3.00
Graduation Fee—Junior College:	
Non-Refundable (including cap and gown rental)	5.00
Graduation Fee—Baccalaureate Degree:	
Non-Refundable	10.00
Transcript:	
One sent free; extras, each	1.00
(When two or more are ordered at the same time the first copy will be \$1.00 and additional copies 50 cents each)	
Student Union: Building Maintenance, Support and Construction:	
(Non-refundable) (per semester full time).....	13.00
per credit hour—part time (\$1.30)	
Bad Check Charge:	
Per check, if returned by bank as "insufficient funds," no account," etc.	5.00
Health and Medical:	
(Per semester)	3.50
Student Health and Accident Insurance:	
(Per semester) (Rate subject to annual review).....	9.89
Athletic Fee:	
Sponsoring Inter-mural and Collegiate Athletic Programs.....	10.00
Art Fees:	
Ceramics, 16-125, 16-126.....	(Per semester) 10.00
Crafts, 16-121, 16-122	(Per semester) 12.00
Graphics, 16-109, 16-110.....	(Per semester) 6.00
Music Fees:	
Orchestra, 29-153	(Per semester) 1.50
A Capella Choir, 29-140.....	(Per semester) 1.50
Vocal Ensemble, 29-143	(Per Semester) 1.50
Instrumental Ensemble, 29-150.....	(Per semester) 1.50
Band, 29-155	(Per semester) 1.50
Music, Applied:	
Piano, 30-151	(Per semester) 45.00
Class Piano, 30-150, one hour per week.....	(Per semester) 12.00
Voice, 30-181	(Per semester) 45.00
Class Voice, 30-180, one hour per week.....	(Per semester) 12.00
Organ, 30-131	(Per semester) 45.00
Violin, 30-171	(Per semester) 45.00
Cello, 30-121	(Per semester) 45.00
String Bass, 30-123	(Per semester) 45.00
Woodwind Instruments	(Per semester) 45.00
Brass Instruments	(Per semester) 45.00
Instrumental Techniques (for public school majors) three lessons per week.....	(Per semester) 20.00
Music—Rental Fees:	
Practice Room with Piano for one hour daily, six days per week	(Per semester) 6.00
Organ Rental, one hour per day.....	(Per semester) 27.00
Key deposit for any music practice room.....	(Per semester) 1.00
Physical Education:	
Towel and Lock Fees:	
47-166, 47-167, 47-168, 47-169, 47-151, 47-176.....	(Per semester) 3.50
Swimming:	
47-177, 47-187, 47-152, 47-153.....	(Per semester) 6.00

*No early final examinations are allowed. Late final examinations can be arranged when extenuating circumstances exist—permission of the Dean of Faculty is required.

Vocational Course Fees:

Auto Body	(Per semester)	15.00
Auto Mechanics	(per semester)	15.00
Carpentry	(Per semester)	15.00
Dental Assisting	(Per semester)	15.00
Drafting and Design	(Per semester)	15.00
Electronics	(Per semester)	15.00
Fashion Merchandising	(Per semester)	15.00
Machine	(Per semester)	15.00
Mid-Management	(Per semester)	15.00
Office Machine Repair	(Per semester)	15.00
Welding	(Per semester)	15.00

Other vocational courses not listed above will also carry the \$15.00 fee.

Students carrying less than 12 credits or 30 clock hours per week will pay \$1.50 per credit per semester on all shop courses.

Late Registration:

Students whose registration is not completed, including payments of all required fees, during the days specified as registration days will be charged a Late Registration fee of \$5 (Non-refundable).

BOARD AND ROOM COST: By the Semester are:

	Board	Room	Total
MORRISON & DRISCOLL HALLS:			
Single	\$226.60*	\$119.40	\$346.00
Double	226.60*	96.40	323.00
WEST HALL	226.60*	78.40	305.00
FALK PLACE	226.60*	91.40	318.00
CHAPMAN HOUSE	226.60*	101.40	328.00

*Includes 3% Idaho Sales Tax

All fees, tuition and other charges are subject to change without notice.

REFUNDS

Students who withdraw from the College during the first four weeks of a semester will be entitled to receive the following refund on tuition, general fees (except non-refundable) and student body fees (if activity ticket is returned) paid for that term:

If withdrawal is made within the first two weeks of a term, 75% will be refunded; after two weeks and within four weeks, 50%; after four weeks, no refund will be allowed.

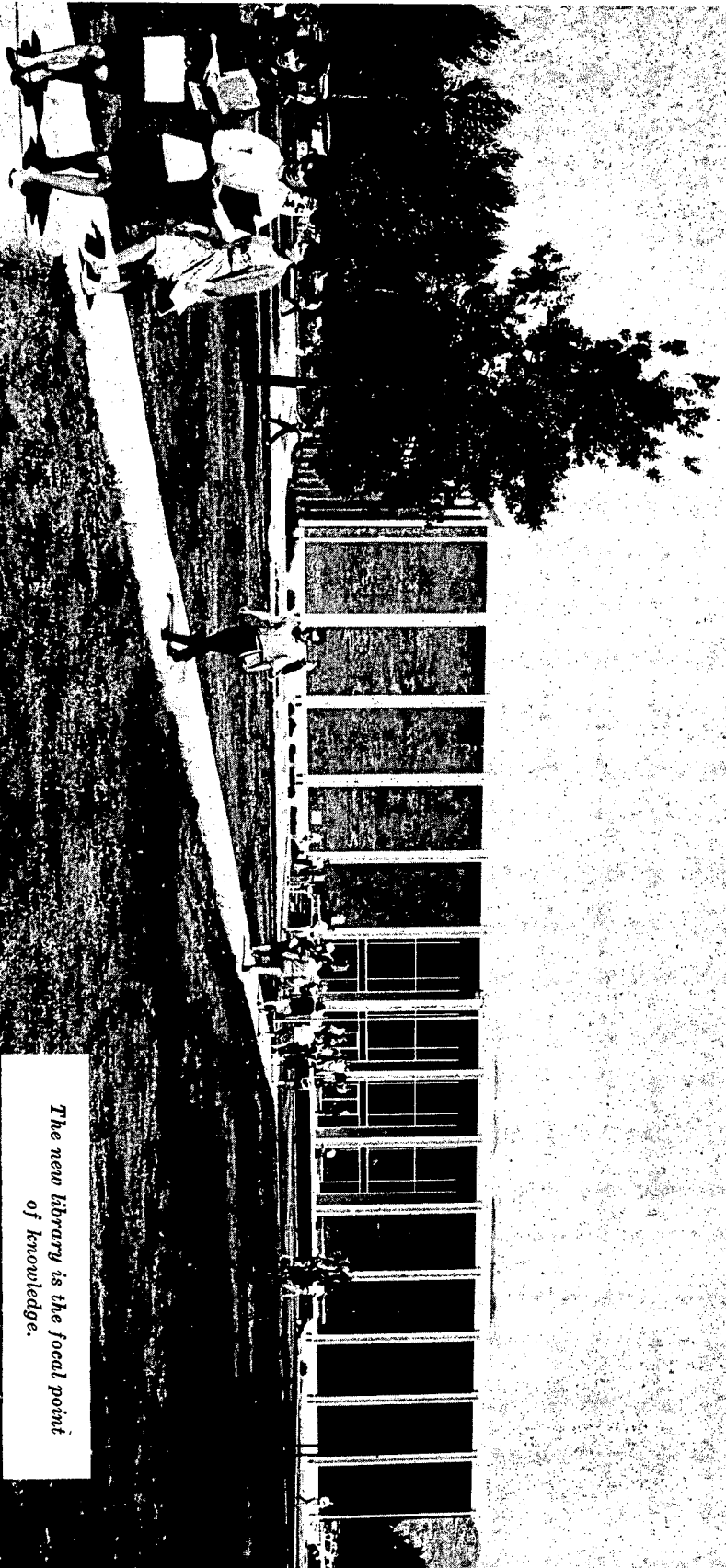
Application for refund must be made to the Business Office at the time of withdrawal and within the time limits mentioned.

DELINQUENT ACCOUNTS

The cancellation of the registration and withholding of academic credit of any student with a delinquent account or an unsatisfactory financial relationship with the business office is authorized without notice if the student has been contacted. This regulation may be invoked at the discretion of the Business Manager in cases of disregard in the settlement of returned checks, loss of property or breakage in excess of the general deposit, dormitory or housing breakage, library fines and losses in excess of the general deposit, telephone toll charges, overdue notes, etc.

AUDITING OF ACCOUNTS

All funds for public purposes within the College and subject to the jurisdiction of either the College or the Associated Student Body and which are contributed to or collected by any student or faculty member shall be deposited with the Business Manager, subject to withdrawal upon written approval of the proper authorities. An accounting of all receipts and expenditures in the funds shall be made by those responsible for their collection immediately after they shall have been disbursed, this accounting to be audited by the Business Manager.



*The new library is the focal point
of knowledge.*